

ENROLLMENT PROJECTIONS

UPPER ARLINGTON CITY S.D.

Upper Arlington, Ohio



October 2018

PLANNING ADVOCATES

ENROLLMENT PROJECTIONS

UPPER ARLINGTON CITY S.D.

Upper Arlington, Ohio

October 2018

Prepared By:

PLANNING ADVOCATES

7160 Eventrail Drive

Powell, Ohio 43065

740/815-6122

TABLE OF CONTENTS

<u>Tables</u>	<u>Page</u>
1. Historical Enrollments by Grades	1
2. Historical Enrollments by Grade Groups	1
3. Historical Live Birth Data for Zip Code 43221	3
4. UA Students Receiving Alternate Services	4
5. Projected Enrollments by Grades	5
6. Projected Enrollments by Grade Groups	5
7. Projected Enrollments by Elementary Schools	7
8. Projected Enrollments by Middle Schools	7
9. Projected and Actual Enrollments: 2018-19, 2017-18	8
 <u>Exhibits</u>	
A. Historical Enrollments by Grade Groups	2
B. Most Likely Projected Enrollments by Grade Groups	6

**Table 1
HISTORICAL ENROLLMENTS BY GRADES
Upper Arlington City School District**

Grade	2009-10	2010-11	2011-12	2012-13	2013-14	2014-15	2015-16	2016-17	2017-18	2018-19
K	406	370	394	413	397	406	414	423	440	445
1	438	433	398	429	441	438	469	447	476	493
2	416	438	452	406	440	445	444	470	469	489
3	455	435	458	465	399	456	464	453	482	482
4	482	450	463	462	455	414	474	476	462	487
5	385	486	459	456	464	465	427	483	490	469
6	424	409	506	483	465	475	464	443	493	495
7	422	433	414	506	469	469	486	486	438	485
8	421	423	444	416	508	475	457	487	493	442
9	459	444	437	454	428	500	479	453	487	512
10	442	469	447	422	450	420	490	477	448	486
11	459	446	454	450	416	437	411	490	465	428
12	497	457	436	462	454	409	439	400	482	463
Total	5,706	5,693	5,762	5,824	5,786	5,809	5,918	5,988	6,125	6,176

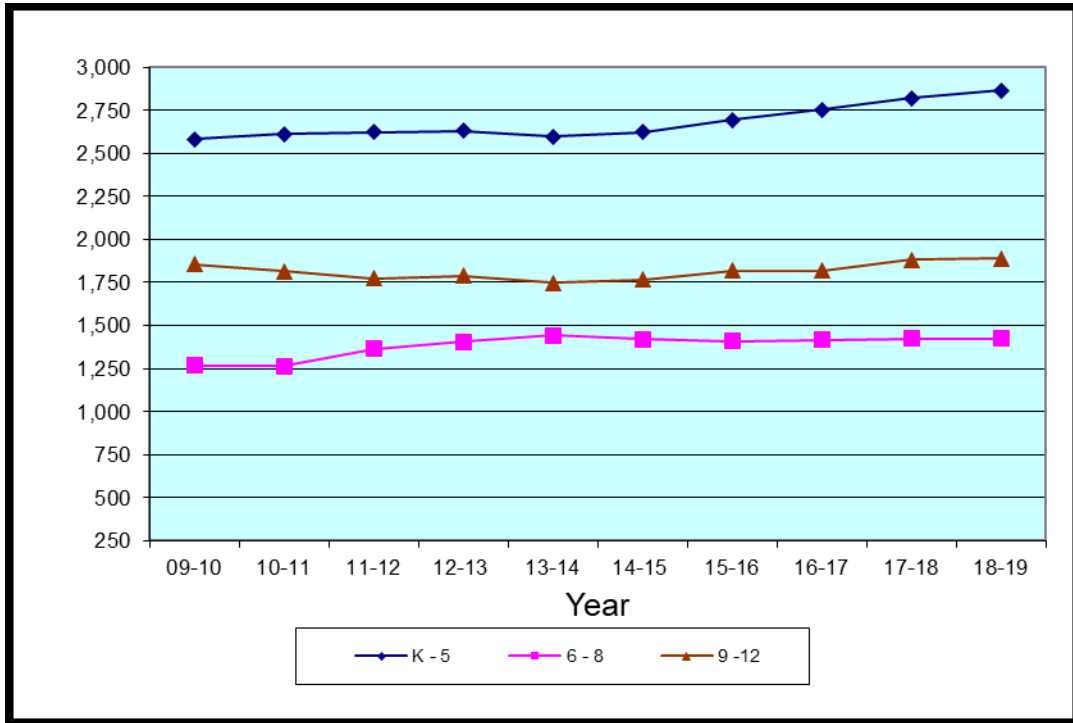
Source: Upper Arlington City School District.

**Table 2
HISTORICAL ENROLLMENTS BY GRADE GROUPS**

Grade	2009-10	2010-11	2011-12	2012-13	2013-14	2014-15	2015-16	2016-17	2017-18	2018-19
K – 5	2,582	2,612	2,624	2,631	2,596	2,624	2,692	2,752	2,819	2,865
6 – 8	1,267	1,265	1,364	1,405	1,442	1,419	1,407	1,416	1,424	1,422
9 – 12	1,857	1,816	1,774	1,788	1,748	1,766	1,819	1,820	1,882	1,889
Total	5,706	5,693	5,762	5,824	5,786	5,809	5,918	5,988	6,125	6,176

Source: Upper Arlington City School District.

Exhibit A
HISTORICAL ENROLLMENTS BY GRADE GROUPS
Upper Arlington City School District



Source: Planning Advocates

Table 3
Historical Live Birth Data: Zip Code 43221

Year	Live Births
2000	376
2001	356
2002	415
2003	386
2004	398
2005	357
2006	409
2007	399
2008	399
2009	388
2010	400
2011	403
2012	426
2013	437
2014	466
2015	464
2016	453
2017	513

Source: Ohio Dept. of Health, Vital Statistics

Zip Code Update: The information we received from last year was altered for 2016 when we received the data from the Ohio Department of Health Vital Statistics this year. The live birth data last year was reported as 462 births and this year live births are 453. The 2017 live births are 513 births. Although the 2016 change is not real significant, the 2017 data is fairly significant with a change of 60 births in just one year. The significance of these numbers will become more clear with additional years of data.

UA Students receiving educational services in alternative settings

Upper Arlington has several resident students who attend educational services in a variety of alternative placements as noted within **Table 4**. There is a total of 212 students within these placements. It is possible that a number of out-of-district students may, at some point, return to the Upper Arlington district for their educational services which affects the total number of students enrolled within the Upper Arlington School District. It will be prudent for the administration to note any changes which may occur during the school year. We are aware that it is difficult to accurately account for these out of district students but it does provide for student information.

**Table 4
UA Students receiving Educational Services in Alternative Settings**

Grade Level

School/Reason	-1	KG	0	1	2	3	4	5	6	7	8	9	10	11	12	14	Total
Arts College Prep													1	1	1		3
AU Scholarship	4		2				4	1		1			1	1	2	2	18
Columbus Prep Acad.		4		4	2												10
Court Order Placed									1								1
ECOT												2	2		2		6
ESC - BURBANK	54																54
ESC - ITINERANT	14																14
Focus North HS												1					1
Follow Teach Parent										1		1					2
Foster Placed Out							1				1		1	1	1		5
Graham School													1		1		2
JP Scholarship			3	1		1	2	2	4		3	1		2			19
Metro Early Coll HS									2	1	5	5	4	4			21
MRDD	18														2	1	21
Nobel Acad.-Colum.		1	1		1												3
Oakstone Comm. School									1			1					2
Ohio Conn Acad. Col													1	1	1		3
Ohio Virtual Adad								1					1				2
Open Enrolled Out					1												1
Quaker Digital Acad.															1		1
SE Receiving Serv.				1	2	2	1	2	3	3	3						17
SE Student Ed Out			1														1
Senior Att. Out															1		1
Supt Agree Out														1			1
Treca Digit Acad.						1		1	1								3
Grand Total	90	5	6	6	6	4	7	7	10	10	12	11	12	11	12	3	212

Source: Upper Arlington City School District

Table 5
PROJECTED ENROLLMENTS BY GRADES
Upper Arlington City School District

Grade	2018-19	2019-20	2020-21	2021-22	2022-23	2023-24	2024-25	2025-26	2026-27	2027-28	2028-29
K	445	441	452	480	481	485	486	498	508	518	529
1	493	502	495	509	542	541	536	547	558	572	580
2	489	508	514	508	522	554	554	555	560	573	585
3	482	502	521	528	522	537	570	573	567	577	590
4	487	494	513	532	540	536	550	585	585	585	592
5	469	501	509	529	551	560	561	573	610	606	607
6	495	478	508	516	535	532	555	550	565	603	601
7	485	501	484	513	522	541	538	561	556	571	599
8	442	484	500	483	512	521	538	536	558	554	569
9	512	446	490	504	486	516	523	545	561	568	562
10	486	507	441	486	500	481	512	519	540	557	564
11	428	475	495	431	475	488	470	500	507	528	544
12	463	423	470	490	427	470	483	465	495	501	522
Total	6,176	6,262	6,392	6,509	6,615	6,762	6,882	7,007	7,170	7,313	7,444

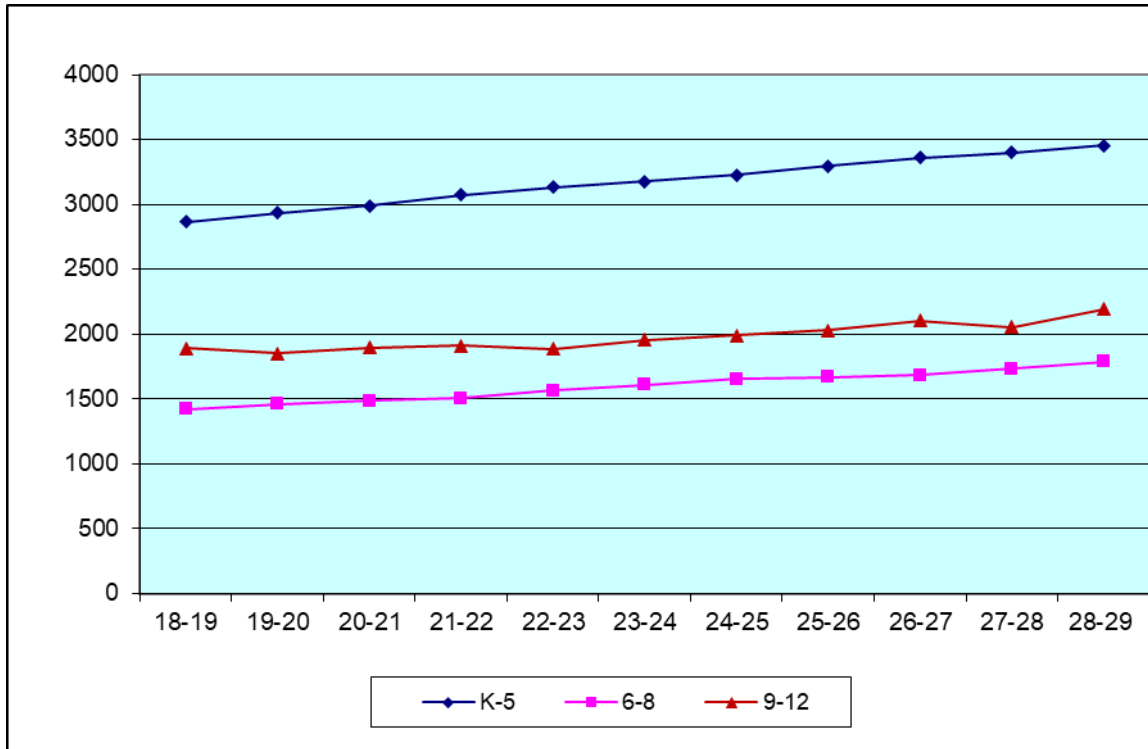
Source: Planning Advocates

Table 6
PROJECTED ENROLLMENTS BY GRADE GROUPS
Upper Arlington City School District

Grade	2018-19	2019-20	2020-21	2021-22	2022-23	2023-24	2024-25	2025-26	2026-27	2027-28	2028-29
K – 5	2,865	2,948	3,004	3,086	3,158	3,213	3,263	3,331	3,388	3,431	3,483
6 – 8	1,422	1,463	1,492	1,512	1,569	1,594	1,631	1,647	1,679	1,728	1,769
9 – 12	1,889	1,851	1,896	1,911	1,888	1,955	1,988	2,029	2,103	2,154	2,192
Total	6,176	6,262	6,392	6,509	6,615	6,762	6,882	7,007	7,170	7,313	7,444

Source: Planning Advocates

Exhibit B
PROJECTED ENROLLMENTS BY GRADE GROUPS
Upper Arlington City School District



Source: Planning Advocates

**Table 7
ELEMENTARY PROJECTED ENROLLMENTS BY SCHOOL
Upper Arlington City School District**

Elementary Schools	2018-19	2019-20	2020-21	2021-22	2022-23	2023-24	2024-25	2025-26	2026-27	2027-28	2028-29
Barrington Elementary	445	441	452	480	481	485	492	498	508	518	529
Greensview Elementary	493	502	495	509	542	541	536	547	558	572	580
Tremont Elementary	489	508	514	508	522	554	554	555	560	573	585
Wickliffe Elementary	482	502	521	528	522	537	570	573	567	577	590
Windermere Elementary	487	494	513	532	540	536	550	585	585	585	592
Total	2,865	2,948	3,004	3,086	3,158	3,213	3,263	3,331	3,388	3,431	3,483

Source: Planning Advocates

**Table 8
MIDDLE SCHOOL PROJECTED ENROLLMENTS BY SCHOOL
Upper Arlington City School District**

Middle Schools	2018-19	2019-20	2020-21	2021-22	2022-23	2023-24	2024-25	2025-26	2026-27	2027-28	2028-29
Hastings MS	682	709	741	730	766	758	819	830	865	881	906
Jones MS	740	754	751	782	803	736	812	817	814	847	863
Total	1,422	1,463	1,492	1,512	1,569	1,494	1,631	1,647	1,679	1,728	1,769

Source: Planning Advocates

**Table 9
PROJECTED AND CURRENT ENROLLMENTS
September 2018**

Projected 2019-20	KG	1	2	3	4	5		Projected 2019-20 Enrollment	2018 Enrollment	Net Change
Barrington	118	125	118	129	139	116		745	740	+5
Greensview	71	103	83	86	68	103		514	494	+20
Tremont	96	103	127	111	129	119		685	664	+21
Wickliffe	77	79	79	85	81	88		489	488	+1
Windermere	79	92	101	91	77	75		515	479	+36
Total Elem.	441	502	508	502	494	501		2,948	2,865	+83
				6	7	8				
Hastings				234	243	232		709	682	+27
Jones				244	258	252		754	740	+14
Total MS				478	501	484		1,463	1,422	+41
			9	10	11	12				
Total HS			446	507	475	423		1,851	1,889	-38
Total Enrollment								6,262	6,176	+86

Source: Planning Advocate