



LONG RANGE Facilities Plan

Phase I: Immediate Needs (SY 24-25)

 Updated Recommendations

Informal Board Meeting: 1/10/2024

PURPOSE

SCCPSS seeks to optimize the usage of facilities, improve the configuration of attendance boundaries, and strengthen the effectiveness of programs.

- ❑ **Facility Data:** Facility Condition Assessment (FCA) has been conducted to understand building life cycles and conditions.
- ❑ **Enrollment & Capacity Data:** School enrollment and facility capacity levels provided clear areas of focus to ease site where capacity levels are at maximum levels.
- ❑ **Student & Staff Needs:** Student, Family, Staff Impact (No Staff Reduction), Inclusiveness, Academic Time Impacts
- ❑ **Improved Efficiencies:** Transportation Route Improvements, Facility Use and Phase Out of Identified Facilities, Financial Savings



CURRENT CHALLENGES

- **School Capacity Levels:** Some schools have reached high-capacity levels while others are underutilized.
- **Facility Conditions/Life Cycle:** Based on the FCA analysis, some facilities reflect a low Facility Condition Index (FCI) due to age, condition, and operational system life-cycles.
- **Extended Time on the Bus:** Certain routes are not optimal based on existing attendance boundaries creating longer travel time on the bus for students.
- **Population Growth/Shifts:** Population changes, residential developments, and industry growth are key factors that influence facility use and District priorities.
- **ESOL Resource Efficiency:** Students of ESOL Programs are better served from their home school locations rather than an existing hub setup.

SOLUTIONS & BENEFITS

- ❑ Improved Transportation Routing (More Efficient)
- ❑ Reduced Capacity / Improved Instructional Spaces
- ❑ Rightsizing School Enrollment Levels
- ❑ Improved Safety (Less Overcrowding)
- ❑ Logical Attendance Zone Configurations
- ❑ Adds Needed Swing Site Facility Options
- ❑ Approximately \$2.6 Million in cost savings (Over 2-yr period)
- ❑ Enhanced Instructional Services (ESOL, GNETS)



RECOMMENDATIONS (SY 24-25)

Summary of Phase I Original Recommendations:

SCHOOL YEAR	SCHOOL	IDENTIFIED STUDENTS MOVING TO:
SY 24-25	Coastal Georgia Comprehensive Academy	Isle of Hope K8
SY 24-25	Gould Elementary	Haven, Butler, NHK-8, Admin Placement at GMG K-12
SY 24-25	Butler Elementary	Hodge, Haven
SY 24-25	Rice Creek K8	GMG K-12 (Gould Elem & Mercer Middle), Godley Station K8
SY 24-25	Garden City Elementary	GMG K-12 (Gould Elem)
SY 24-25	New Hampstead K8	Godley Station K8

**Highlighted schools denote a modification from original recommendation.*

RECOMMENDATIONS (SY 24-25)

Summary of Phase I Original Recommendations:

SCHOOL YEAR	SCHOOL	IDENTIFIED STUDENTS MOVING TO:
SY 24-25	West Chatham Middle	GMG K-12 (Mercer), ESOL Families, NHK-8
SY 24-25	New Hampstead High	Beach High School
SY 24-25	Largo Tibet Elementary	Pulaski K8, Windsor Forest Elementary (Largo becomes a swing site)
SY 24-25	Formey Early Learning Center	Reviewing temporary move as a project under our Capital Projects program to allow for site renovations (Formey Renovations SY 24-25)
SY 24-25	A.B. Williams Elementary	No Changes at this time. Plans are under further consideration for Phase II.
SY 25-26	Shuman *Includes all Shuman and Formey Students	No Changes at this time. Plans are under further consideration for Phase II.

*Highlighted schools denote a modification from original recommendation.


RECOMMENDATIONS (SY 24-25)

- GOULD, BUTLER, HAVEN, HODGE, LARGO-TIBET (STEM ACADEMY SWING SITE)

GOULD ELEMENTARY
NEW Proposal: Students remain at Gould with a portion rezoned to NHK-8
<ul style="list-style-type: none">➤ 493 Students Remain at Gould Elementary➤ 394 Students Rezoned to New Hampstead K-8

BUTLER, HAVEN, HODGE ELEMENTARY
NEW Proposal: No movement.
No changes.

STEM ACADEMY
NEW Proposal: Largo-Tibet swing site renovation occurs SY 24-25
STEM Academy will not move until SY 25-26 (Swing Site)

-  The Gould students identified for New Hampstead K-8 currently reside in the New Hampstead High School attendance zone.

RECOMMENDATIONS (SY 24-25)

- ESOL programs will move to serve students at their zoned schools (includes various locations as identified by student address).

SCHOOL YEAR	ESOL PROGRAM SCHOOL	Zoned School Location
SY 24-25	Rice Creek K-8	Return to Home Schools (Various)
SY 24-25	Windsor Forest Elementary	Return to Home Schools (Various)
SY 24-25	West Chatham Middle	Return to Home Schools (Various)
SY 25-26	May Howard Elementary	Return to Home Schools (Various)

SY24-25

Long Rang Facilities Plan: Phase I

New Recommendations



Includes updates based on considerations for Western Chatham County.

Overarching Criteria

- Data-Driven
- Whole District Efficiency and Effectiveness (financial efficiency and resource stewardship)
- Transparency on past and future decisions

Student Movement

- Minimize boundary changes for the next 3-5 years (limit student transitions from school to school)
- Maintain feeder patterns (Elementary, Middle, and High School)
- Logical attendance boundaries

Instructional Implications

- Class size
- Minimize disruption to high school students' concentration of study
- Access to resources
- Teacher workspaces

Additional Criteria

Building Utilization

- Over or under capacity
- Impact on building condition
- Building Life-Cycle
- Meeting state requirements for facility space

Safety/Cultural

- Student Safety
- Effective use of space (classrooms, cafeteria, and gym)
- Traffic/Access to School
- Staff burnout: Workload intensity/Work Environment

Future Considerations

- Continued growth
- Construction timelines
- Potential for future construction

Expansive Growth in Western Chatham County



A dirt road leads to a new logistics warehouse being built off Fort Argyle Road. Richard Burkhardt/Savannah Morning News



NEWS

Census: Chatham County population jumps double digits; highest growth in Pooler, Port Wentworth

Raisa Habersham Savannah Morning News
Published 3:58 p.m. ET Aug. 12, 2021 | Updated 10:30 a.m. ET Aug. 13, 2021

District 7 Town Hall and Community Feedback

On December 12, 2023, Western Chatham recommendations were shared with families.



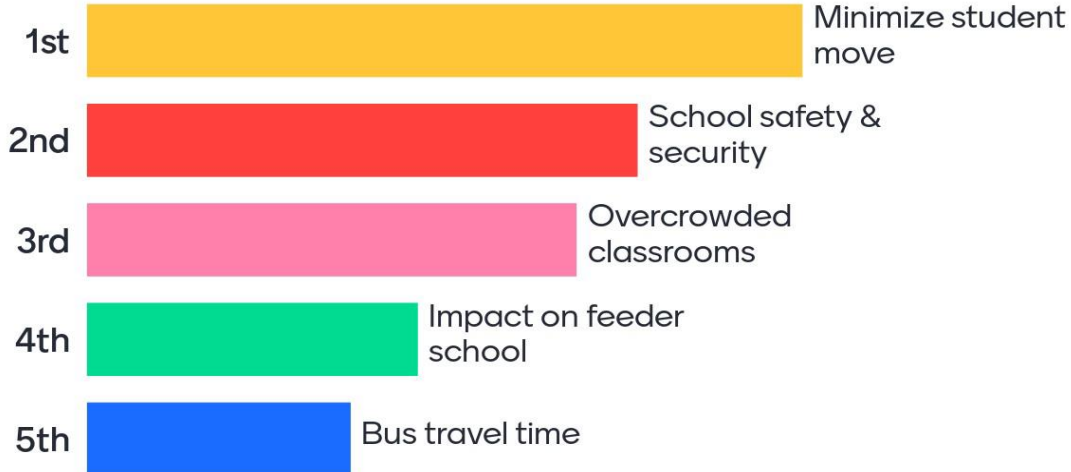
Grandfathering Options were widely supported.

Concerns were noted for multiple moves.

Athletics and School Community remain an area of Importance.

Mentimeter Live
Poll Snapshot:

Rank what should be considered first when
adjusting attendance zones? (Rank order)



Full Poll Results posted to
BoardDocs/Jan 10, 2024,
Informal Agenda

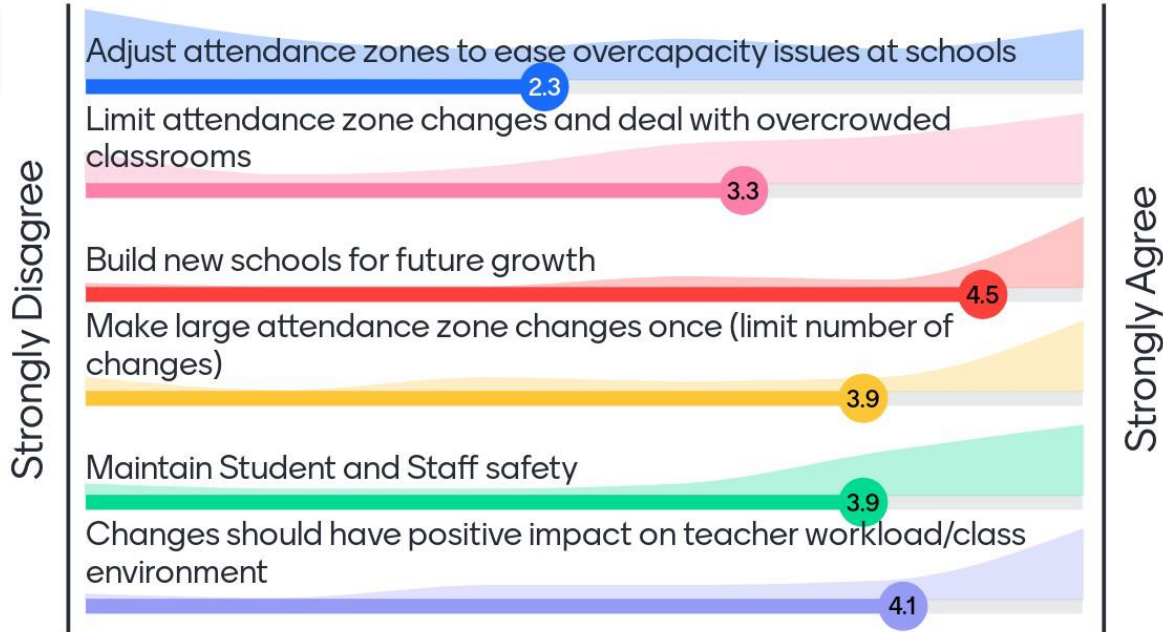


District 7 Town Hall and Community Feedback

On December 12, 2023, Western Chatham recommendations were shared with families.

Do you agree with the following when considering attendance zone changes?

Mentimeter Live
Poll Snapshot:

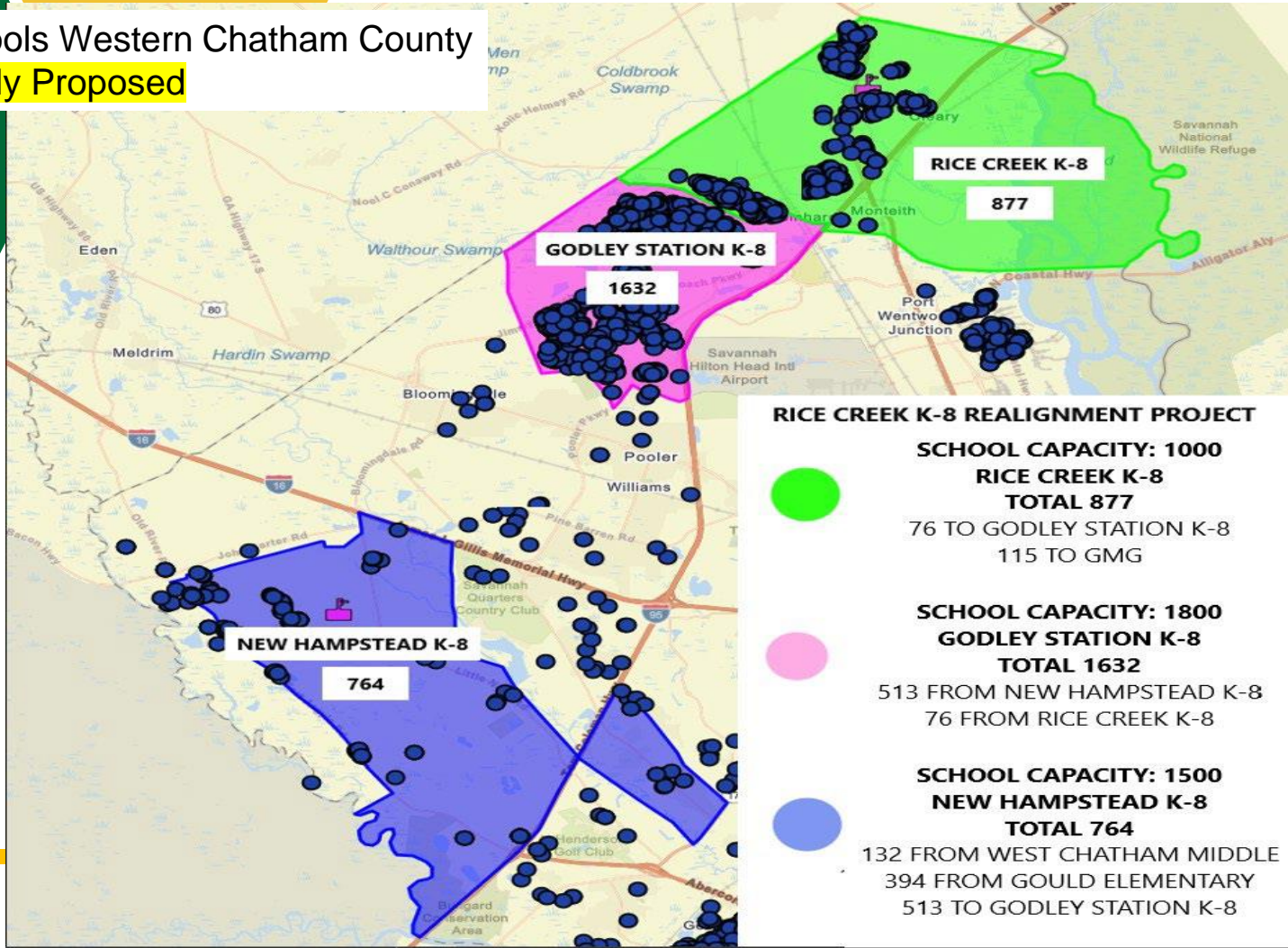


Full Poll Results posted to
BoardDocs/Jan 10, 2024,
Informal Agenda



K-8 Schools Western Chatham County

Previously Proposed



RICE CREEK K-8 REALIGNMENT PROJECT

SCHOOL CAPACITY: 1000
RICE CREEK K-8
TOTAL 877



76 TO GODLEY STATION K-8
 115 TO GMG

SCHOOL CAPACITY: 1800
GODLEY STATION K-8
TOTAL 1632



513 FROM NEW HAMPSTEAD K-8
 76 FROM RICE CREEK K-8

SCHOOL CAPACITY: 1500
NEW HAMPSTEAD K-8
TOTAL 764

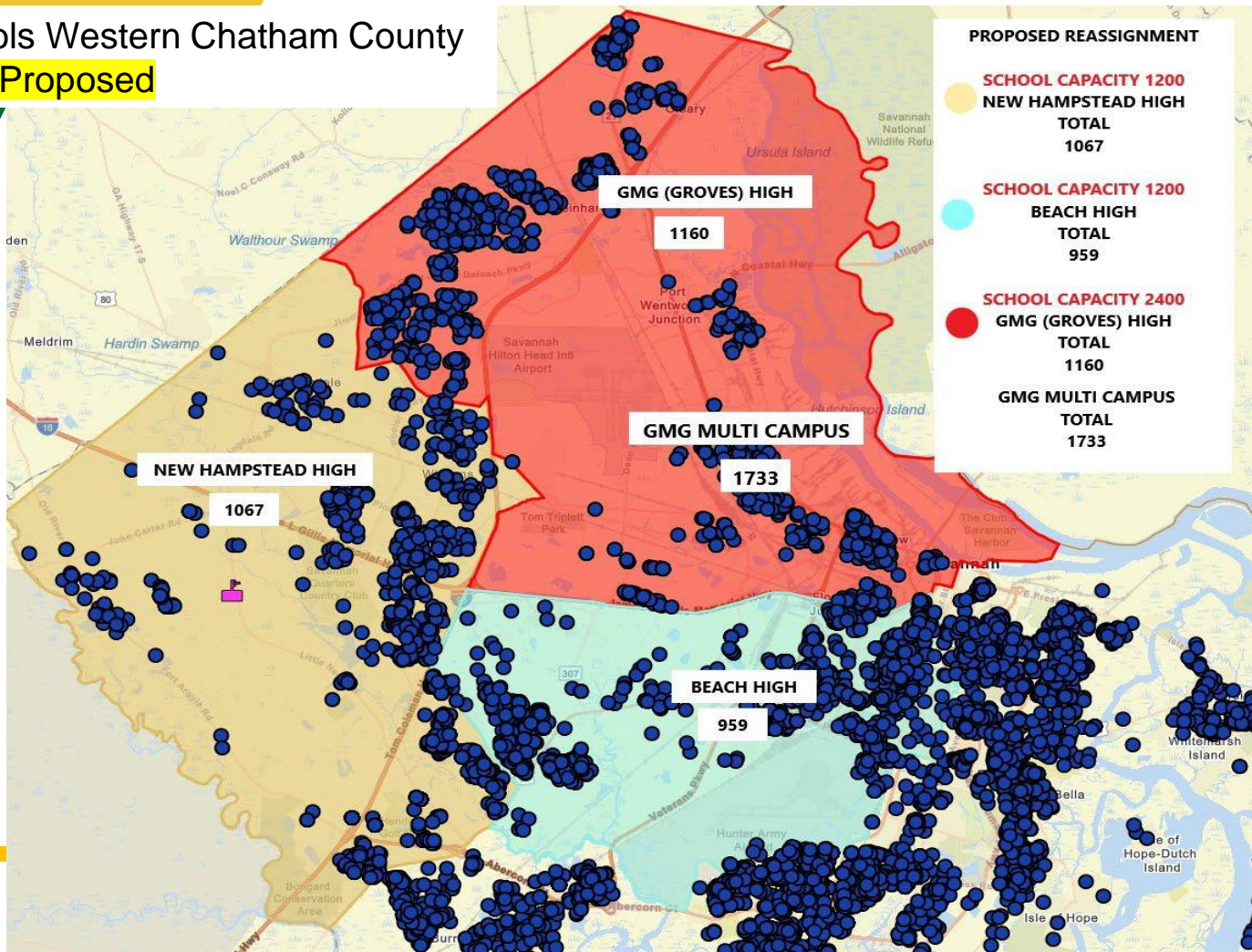


132 FROM WEST CHATHAM MIDDLE
 394 FROM GOULD ELEMENTARY
 513 TO GODLEY STATION K-8



High Schools Western Chatham County

Previously Proposed



New Recommendations: Western Chatham County

SCCPSS seeks to minimize disruption related to student movement in the fastest growing segment of the county by Leverage Existing Resources and providing options for Grandfathering certain grade levels to alleviate capacity issues over time.



Grandfathering Option for Identified Rezoned Students

Grandfathering: A provision that provides an exception to allow identified students to remain at their current school.

Eligible Students

- **New Hampstead High School:**
Rising 10th, 11th, 12th Grade Students
- **New Hampstead K-8:**
Rising 8th Grade Students
- **Rice Creek K-8:**
Rising 8th Grade Students

- Grandfathering Option only available for eligible students who are currently enrolled
- Parent must provide transportation
- Sibling Preference Subject to Space Availability
- No Elementary Grandfathering Option

Excluding students approved for Sibling Preference, all future students will attend their newly zoned schools.

New Recommendations: Western Chatham County

SCCPSS seeks to minimize disruption related to student movement in the fastest growing segment of the county by Leverage Existing Resources and providing options for Grandfathering certain grade levels to alleviate capacity issues over time.



Multi-Site Complex Becomes 6th-12th:

Rezones more students from New Hampstead High School to Groves
(Increases Groves HS Enrollment)



NHK8 Attendance Boundary Adjusted:

Hwy80/Jimmy DeLoach area

Limits Multi-year Moves where possible (NHK8)

Key Facts to Know!



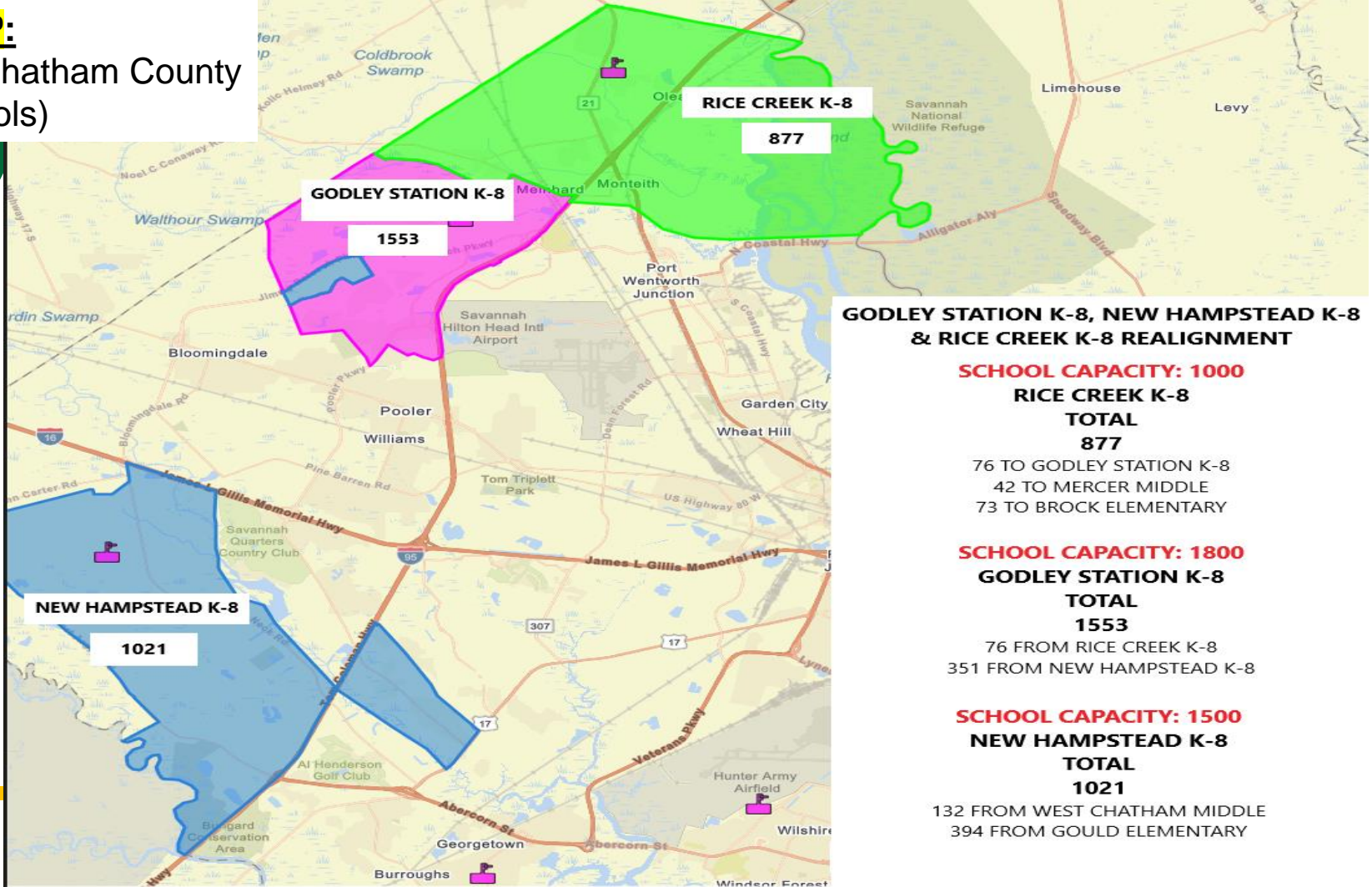
Athletics: Stay or Go – No Impact

- A high school student who is grandfathered under this option and elects to remain at the current school of attendance will retain athletic eligibility at that school if they do not withdraw for any period of time.
- Rezoned students who move will have no impact on eligibility.
GHSA Bylaw 1.69(b)



Identified Rezoned Students: Students may attend rezoned school(s). Transportation will be provided.

NEW MAP:
 Western Chatham County
 (K-8 Schools)



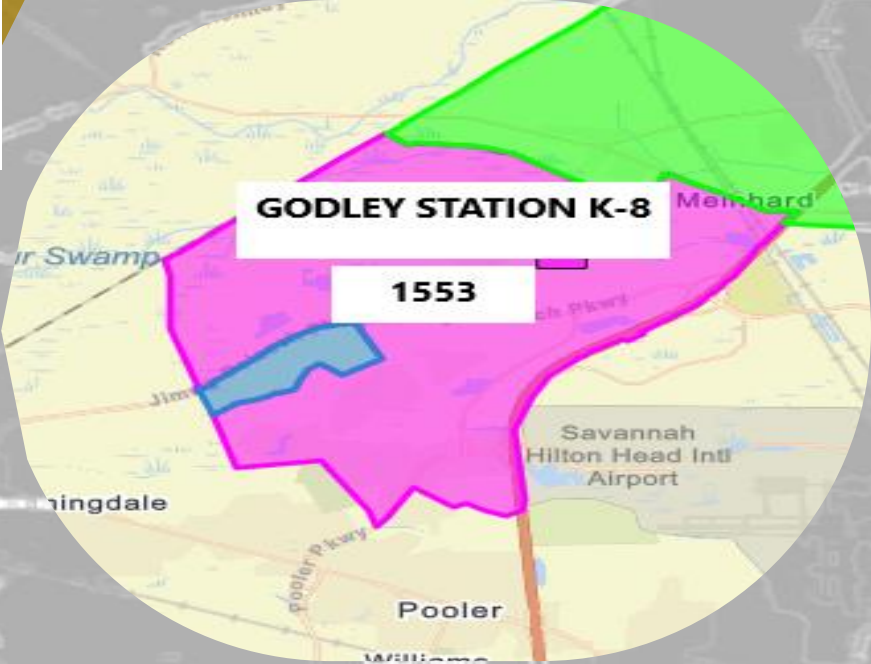
**GODLEY STATION K-8, NEW HAMPSTEAD K-8
 & RICE CREEK K-8 REALIGNMENT**

SCHOOL CAPACITY: 1000
RICE CREEK K-8
TOTAL
877
 76 TO GODLEY STATION K-8
 42 TO MERCER MIDDLE
 73 TO BROCK ELEMENTARY

SCHOOL CAPACITY: 1800
GODLEY STATION K-8
TOTAL
1553
 76 FROM RICE CREEK K-8
 351 FROM NEW HAMPSTEAD K-8

SCHOOL CAPACITY: 1500
NEW HAMPSTEAD K-8
TOTAL
1021
 132 FROM WEST CHATHAM MIDDLE
 394 FROM GOULD ELEMENTARY

NEW MAP:
Western Chatham County
(K-8 Schools)



Portions of map create unusual boundary lines due to the proximity to undeveloped land.
(Hwy80/Jimmy DeLoach)

Benefits and Considerations

NEW MAP: Western Chatham County (K-8 Schools)

Benefits:

- ✓ Balances School Enrollment
- ✓ Reduces Capacity Constraints
- ✓ Improves Attendance Boundaries
- ✓ Positive Impact on Bus Routing
- ✓ Considers future student movement

Considerations:

- ✓ Potential for future moves as new schools open (**Bloomingtondale**)
- ✓ Boundary lines give appearance of an illogical attendance zone map

***Hwy80/Jimmy DeLoach area zoned for NHK8 is currently surrounded by undeveloped land*

New Recommendation (Multi-Site Configuration):

Minimize student movement to the greatest extent possible.

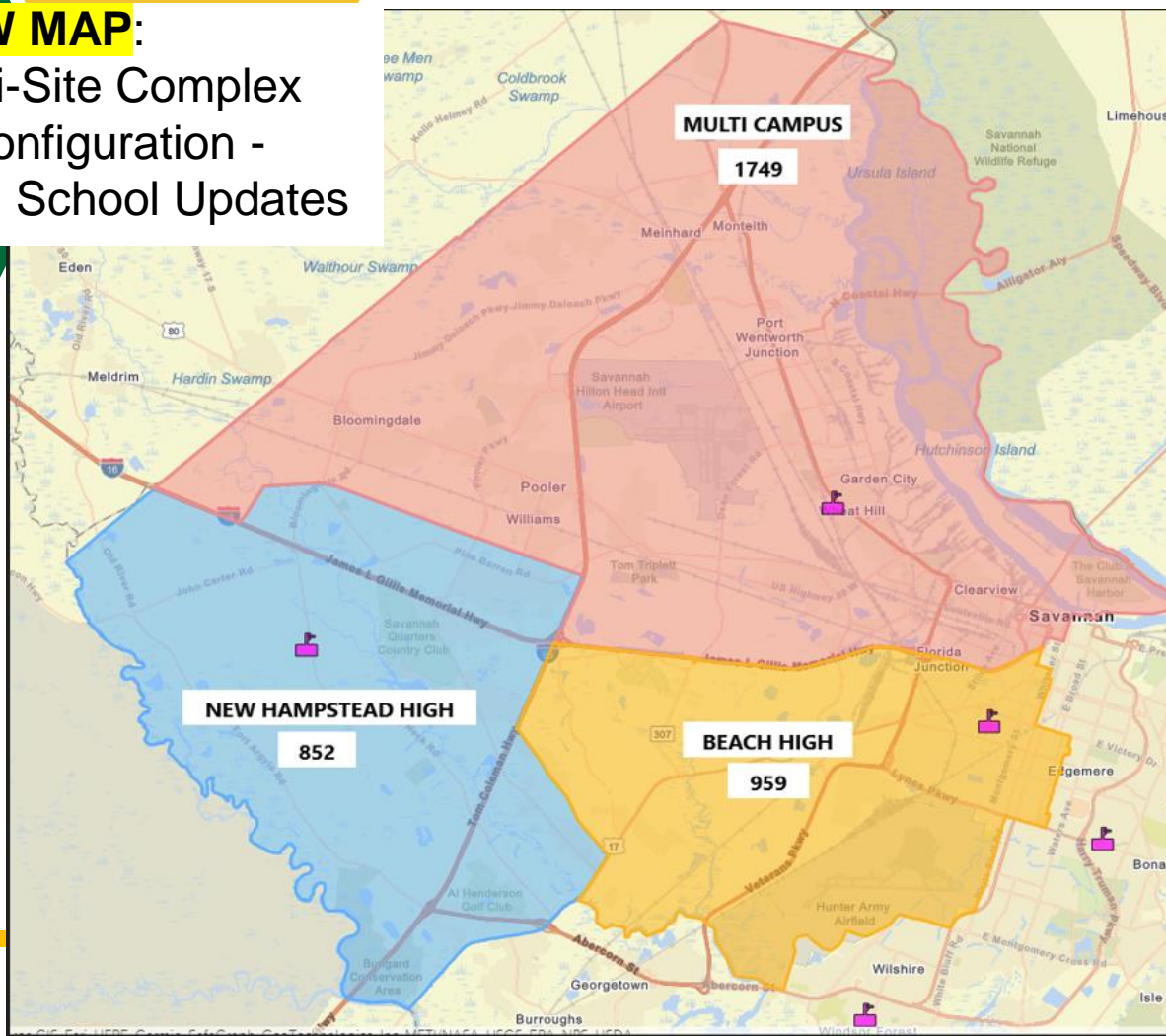
Multi-Site Complex Becomes 6th-12th

- **Garden City Elementary** students/families will remain at Garden City Elementary School
- **Rice Creek K-8** students/families that would have been zoned for the elementary at the GMG K-12 multi-complex will move to Brock Elementary; Middle School attendance zone would be Mercer Middle
 - Due to Rice Creek K-8 Capacity administrative placements are not available
- **Increase Groves High School** enrollment at the multi-site complex by moving more students from NHHS
- **NHHS** students/families rezoned for Beach and Groves would move if they do not seek Grandfathering



NEW MAP:

Multi-Site Complex Reconfiguration - High School Updates



PROPOSED REASSIGNMENT

SCHOOL CAPACITY: 1200
CURRENT NEW HAMPSTEAD HIGH
TOTAL
1481

463 TO MULTI-CAMPUS
166 TO BEACH HIGH

PROPOSED NEW HAMPSTEAD HIGH
TOTAL
852

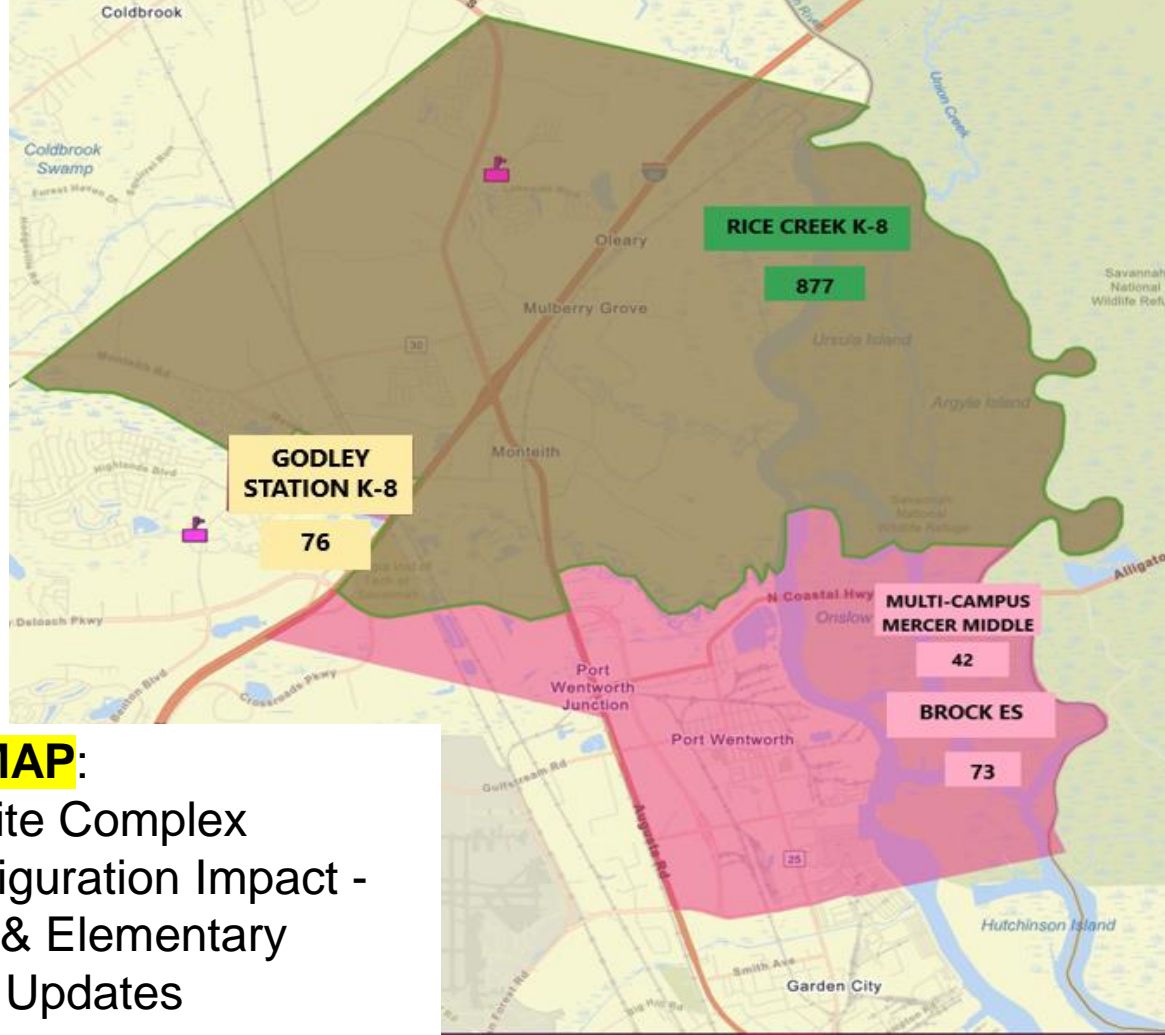
SCHOOL CAPACITY: 1200
CURRENT BEACH HIGH
TOTAL
793

166 FROM NEW HAMPSTEAD HIGH

PROPOSED BEACH HIGH
TOTAL
959

SCHOOL CAPACITY: 2400
MULTI CAMPUS
TOTAL
1749

912 FROM GROVES
463 FROM NEW HAMPSTEAD
332 FROM MERCER MIDDLE
42 FROM RICE CREEK K-8



PROPOSED RICE CREEK K-8 REALIGNMENT

SCHOOL CAPACITY: 650
CURRENT BROCK ELEMENTARY
TOTAL
426
 73 FROM RICE CREEK K-8

PROPOSED BROCK ELEMENTARY
TOTAL
499

SCHOOL CAPACITY: 850
CURRENT MERCER MIDDLE
TOTAL
332
 42 FROM RICE CREEK K-8

PROPOSED MERCER MIDDLE
TOTAL
374

SCHOOL CAPACITY: 1800
CURRENT GODLEY STATION K-8
TOTAL
1126
 76 FROM RICE CREEK K-8
 351 FROM NEW HAMPSTEAD K-8

PROPOSED GODLEY STATION K-8
TOTAL
1553

NEW MAP:

Multi-Site Complex
 Reconfiguration Impact -
 Middle & Elementary
 School Updates

Multi-Site Reconfiguration – Key Takeaways

- Moving students from Rice Creek K-8 to Brock Elementary solves underutilization of Brock Elementary and reduces enrollment capacity of Rice Creek K-8; Improves transportation, parent engagement, and instructional time
- Decreased population at NHHS allows for continued growth / Increased availability of HS Seats in western Chatham/Garden City area
- JROTC programs transition to other JROTC programs
- Increased CTAE programs at Beach & Groves
- No impact to the GHSA Eligibility (recruitment and scholarship opportunities continue)
- Additional information on the process for selecting the Grandfathering option will be provided in February



Next Steps

Long Rang Facilities Plan: Phase I

Next Steps if Approved

Staffing Implications: Transfer Process, Meetings, Continued Communication

Implementation of the “Grandfathering” Process

Parent Meetings: ESOL, SWD, Athletics, Students Organizations/Clubs

Receiving Schools: “Get to Know your School” meetings, Open House Schedule

Finalize Bell Time Adjustments (If Any)

Begin the Renaming Process for GMG K-12

LRFP: Phase II Planning and Engagement

Schedule Applicable School Closure Public Hearings (Legal Requirement)

Legal Requirement: O.C.G.A. § 20-2-260 (k.1) Prior to a local board of education's decision becoming effective to close any existing school where such closing results in the transporting of students from the school to be closed to any new or existing school or schools even though no additional capital funding is required as a result of the assignment thereto of those students from any school to be so closed, the local board of education shall hold two public hearings.

QUESTIONS?

