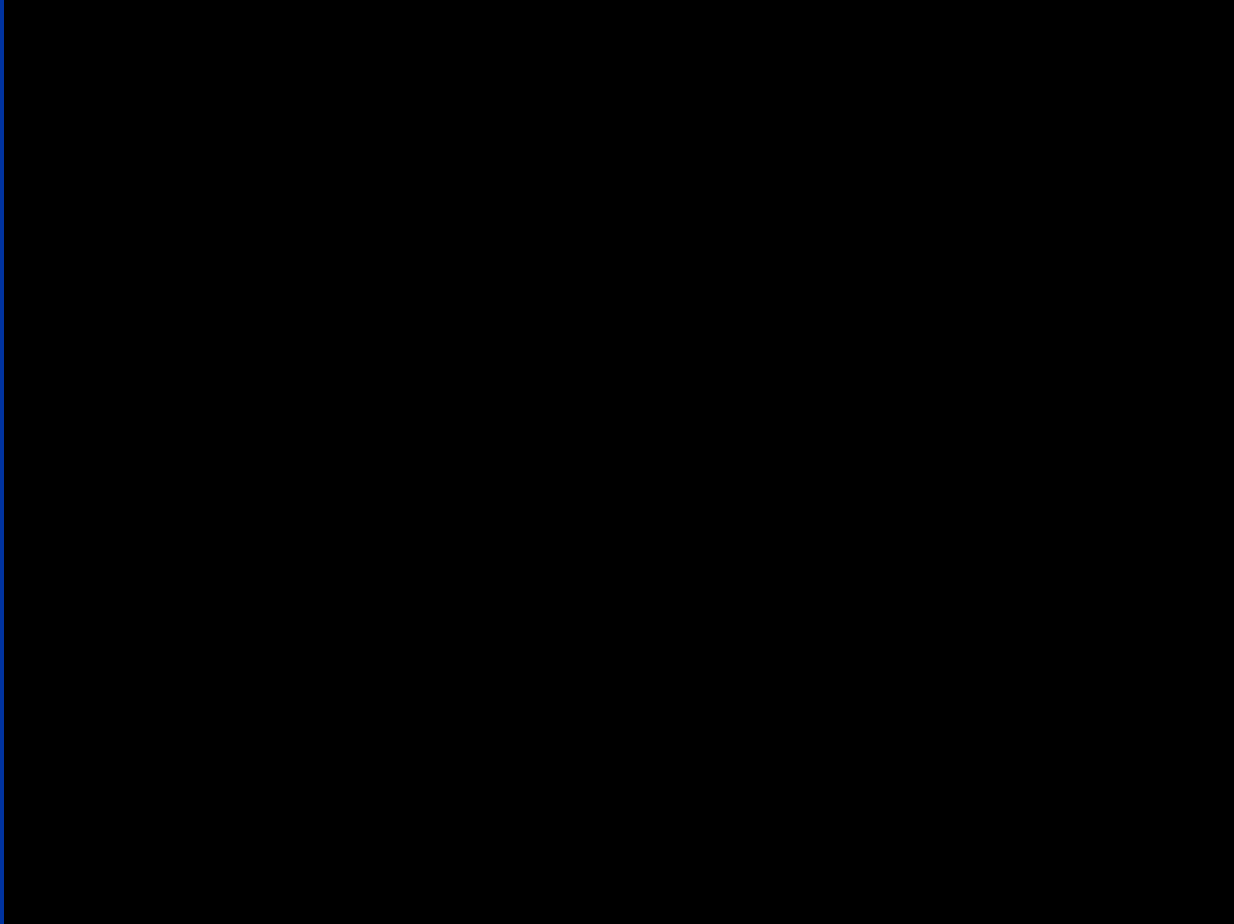




7th Grade Orientation and Expo

Class of 2030

Welcome!



Welcome



Welcome

7th Grade Orientation and Expo

Class of 2030

Thank you for coming tonight!

Garden Spot Secondary Campus

The Spartan Way: Doing What's Right, Doing Our Best, Doing For Others

Staff



Rob Arrick
Class of 2030
Principal
7th and 8th Grade



Nancy Schwabe-Fry
Class of 2030
Counselor
7th and 8th Grade

Staff



Deb Berry
Administrative Assistant
for Guidance and
Attendance



Jill Bielawski
Class of 2029 Counselor
7th and 8th Grade

Tonight's Events



Tonight:

- Guided tour of the middle school (led by 7th grade students)
- Attend the Expo in Community Hall to learn about various activities and services at the middle school
- Auditorium presentation where you will learn about
 - Plans for next year (schedule, electives, sports, etc.)
 - Tips to help you prepare yourself and your child for success at the middle school
 - Transition opportunities (course selection, elementary visits to the middle school, and summer open house)

Your Journey Tonight...



Tour - Cafeteria

Student Name _____ Elementary School _____

GSMS Houses GSMS Teachers Initials _____	Yearbook Rathbun Initials _____	SAP Angie Hansen Initials _____	ElancOnline Swinsburg Initials _____	Student Council Rachel Lester Initials _____
Library Means Initials _____	Music Programs Henry Initials _____	GSPA Student Leaders Initials _____	Cafeteria Groome/Tatary Initials _____	
Rocket Club Donward Initials _____	Athletics Wilson Initials _____	School Nurse Fulmer Initials _____	Special Education Weich Initials _____	

Additional Tables: School-Based Counseling – Community Services Group

Time	Blue Cards	Gray Cards
6:00	Everyone begins in the Auditorium	
6:10	Expo or Tour	Remain in Auditorium
6:27	Expo or Tour	Remain in Auditorium
6:45	Auditorium	Expo or Tour
7:02	Auditorium	Expo or Tour
7:20	Everyone returns to Auditorium for Prize Drawing	

Student Name _____ Elementary School _____

GSMS Houses GSMS Teachers Initials _____	Yearbook Rathbun Initials _____	SAP Angie Hansen Initials _____	ElancOnline Swinsburg Initials _____	Student Council Rachel Lester Initials _____
Library Means Initials _____	Music Programs Henry Initials _____	GSPA Student Leaders Initials _____	Cafeteria Groome/Tatary Initials _____	
Rocket Club Donward Initials _____	Athletics Wilson Initials _____	School Nurse Fulmer Initials _____	Special Education Weich Initials _____	

Additional Tables: School-Based Counseling – Community Services Group

Time	Blue Cards	Gray Cards
6:00	Everyone begins in the Auditorium	
6:10	6:10	6:10
6:27	6:27	6:27
6:45	6:45	6:45
7:02	7:02	7:02
7:20	Everyone returns to Auditorium for Prize Drawing	

Expo - Community Hall

Schedule in Pamphlet

Grey Cards: Please Stay in Auditorium for the first part of tonight's Rotation

Tour - Cafeteria

Student Name _____ Elementary School _____

GSMS Houses GSMS Teachers Initials _____	Yearbook Rathbun Initials _____	SAP Angie Hansen Initials _____	ElancOnline Swinsburg Initials _____	Student Council Rachel Lester Initials _____
Library Means Initials _____	Music Programs Henry Initials _____	GSPA Student Leaders Initials _____	Cafeteria Groome/Tatary Initials _____	
Rocket Club Donward Initials _____	Athletics Wilson Initials _____	School Nurse Fulmer Initials _____	Special Education Weich Initials _____	

Additional Tables: School-Based Counseling – Community Services Group

Time	Blue Cards	Gray Cards
6:00	Everyone begins in the Auditorium	
6:10	Expo or Tour	Remain in Auditorium
6:27	Expo or Tour	Remain in Auditorium
6:45	Auditorium	Expo or Tour
7:02	Auditorium	Expo or Tour
7:20	Everyone returns to Auditorium for Prize Drawing	

Student Name _____ Elementary School _____

GSMS Houses GSMS Teachers Initials _____	Yearbook Rathbun Initials _____	SAP Angie Hansen Initials _____	ElancOnline Swinsburg Initials _____	Student Council Rachel Lester Initials _____
Library Means Initials _____	Music Programs Henry Initials _____	GSPA Student Leaders Initials _____	Cafeteria Groome/Tatary Initials _____	
Rocket Club Donward Initials _____	Athletics Wilson Initials _____	School Nurse Fulmer Initials _____	Special Education Weich Initials _____	

Additional Tables: School-Based Counseling – Community Services Group

Time	Blue Cards	Gray Cards
6:00	Everyone begins in the Auditorium	
6:10	6:10	6:10
6:27	6:27	6:27
6:45	6:45	6:45
7:02	7:02	7:02
7:20	Everyone returns to Auditorium for Prize Drawing	

Expo - Community Hall

Blue Cards: Look to see if you have Tour (will start in Caf) or Expo (will start in Community Hall). You will be dismissed to those locations in a moment

Once at the Expo...



Student Name _____		Elementary School _____	
GSMS Houses	Yearbook	SAP	ElancOnline
GSMS Teachers	Ratkey	Angie Hansen	Swinsburg
Initials _____	Initials _____	Initials _____	Initials _____
Library	Music Programs	GSPA	Cafeteria
Means	Henry	Student Leaders	Groome/Leisey
Initials _____	Initials _____	Initials _____	Initials _____
Rocket Club	Athletics	School Nurse	Special Education
Downard	Wilson	Fulmer	Weich
Initials _____	Initials _____	Initials _____	Initials _____
Additional Tables: School-Based Counseling – Community Services Group			
Time	Blue Cards	Gray Cards	
6:00	Everyone begins in the Auditorium		
6:10	6:10	6:10	
6:27	6:27	6:27	
6:45	6:45	6:45	
7:02	7:02	7:02	
7:20	Everyone returns to Auditorium for Prize Drawing		

Expo - Community Hall



Be sure to put your child's first and last name and Elementary School at the top of the card (circled in yellow)

Visit as many tables as you can in the Expo and get initials from the facilitators on your card

Place completed cards in the Drawing Box in Community Hall

Blue Cards are dismissed to move to Expo or Cafeteria



Grey Cards

**Please Stay in Auditorium
for the first part of tonight's
rotation**

Blue Cards

**Look to see if you have Tour (will
start in Caf) or Expo (will start in
Community Hall). Please use the
doors at front of auditorium (Expo
to right, Tour to left)**

Life at the Middle School

Proposed Bell Schedule 2024-25



Period 1	7:25 - 8:35	Period 1	7:25 - 8:35
Period 2	8:40 - 9:50	Period 2	8:40 - 9:50
Period 3	9:55 - 11:05	Period 3	9:55 - 11:05
Period 4	11:10 - 12:20	Period 4	11:10 - 12:20
Lunch	12:20 - 12:50	iSpartan	12:20 - 12:50
iSpartan	12:50 - 1:20	Lunch	12:50 - 1:20
Period 5	1:25 - 2:35	Period 5	1:25 - 2:35

Academics: what courses do 7th graders take?

- **One Math (Math 7 or Honors Math)**
- **One Science**
- **One Social Studies**
- **One Language Arts (Language Arts 7 or Honors Language Arts)**
- **Health/PE required for all 7th graders to take as one of their electives since it is required in MS**
- **3 additional electives**
- **With the exception of music ensembles, most electives will occur every day for one quarter. Learners will switch to a new elective each marking period.**

Academics

- Students will receive grades in each class (A+, A, A-, B+, B, B-, etc.)
- Students qualify for Honor Roll quarterly depending on their GPA.
- D- and above is a passing grade.
- PowerSchool will show grades in live time to students and parents. Recommend parents check at least. 1x/week. Parent login info sent in summer mailing.
- Report Cards are sent home quarterly.

Academics: When and How Will Learners Choose Classes?

- 6th grade elective course selection in each elementary school.
 - Friday, March 15, Blue Ball
 - Tuesday, March 19, Brecknock
 - Wednesday, March 20, New Holland
 - TBD, EOL learners
- Learners will choose elective classes using PowerSchool
- Students will be placed in math and ela levels based on PSSA scores, teacher recommendations and parent requests
- New this year: music ensembles (band, chorus, orchestra) are the graded Applied Music elective. Students can be in multiple ensembles.

Course Selection



6th Grade Course Selection Worksheet

My thoughts after watching the video.

Definitely interested in.....	Might be interested in.....

Blue Ball- March 15
Brecknock- March 19
New Holland- March 20

Pre-Lesson with teacher

7th Grade Course Sequence 2023-24

The courses listed below are offered to 7th Graders. Placement in core courses: English, Math, History, and Science are determined by student data and teacher recommendation. PE/Health is a required course. Students may choose 4 humanities electives.

Required 7 th Grade Classes			
Course #	Course Title	Department	Credits
07LA2	Language Arts 7	English	1
07MATH2	Math 7	Math	1
07MATH1	Keystone Algebra	Math	1 (prerequisite: Math 7)
07SS03	Social Studies 7	History	1
07SC03	Science 7	Science	1

Electives

7th Graders have the opportunity to take 4 electives in the first year of middle school. Each elective course is for one marking period. Please be sure to select Health/PE as one of your electives since this is required for MS.

Use the space at the bottom of this worksheet to list, in order of preference, 3 possible electives and then list, in order of preference, 3 possible alternate (back-up) electives.

Course #	Course Title
Elective 1	DO NOT WRITE
Elective 2	DO NOT WRITE
Elective 3	DO NOT WRITE
Elective 4	DO NOT WRITE
Alternate Elective 1	DO NOT WRITE
Alternate Elective 2	DO NOT WRITE
Alternate Elective 3	DO NOT WRITE

Will come home with students after Lesson

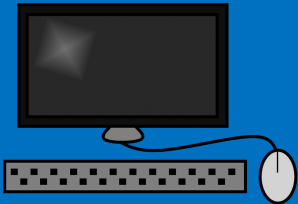
Possible Electives 7th Grade

Course #	Course Title	Credits	Prerequisite
0240MS	Agriculture, Food and Natural Resources	.25	
5110MS	Ukulele and Guitar	.25	
5120MS	Music Production	.25	
5130MS	Advanced Production/Performance	.25	Ukulele and Guitar or Music Production
5620MS	Foundations of Art 1	.25	
5630MS	Foundations of Art 2	.25	Foundations of Art 1
5640MS	Advanced Academy Art	.25	Foundations of Art 2
7110MS	Problem Solving 21	.25	
7115MS	Problem Solving 22	.25	Problem Solving 21
7730MS	Intro to Technology	.25	
7740MS	Exploring Technology	.25	Intro to Technology
7750MS	Introduction to Broadcasting	.25	
7820MS	Introduction to Computer Programming	.25	
3900MS	Exploratory German and Spanish	.25	
7125MS	Global Social Problems	.25	
7140MS	Ice House	.25	
4835MS	Health and Physical Education A	.25	

Elective Course Offerings 2024-25



- Course descriptions are available on the Middle School Website under “Academics” --Class of 2030 Elective Course Descriptions
- Here is a video explaining the various options available next year.



2024-2025 Elective Course Promo Video



Course Selection



- **If a student is absent, Mrs. Schwabe-Fry, will schedule an individual meeting with that student or coordinate with the elementary counselor to schedule.**
- **After I meet with learners, they can only change classes by contacting me. Changes must be made by the end of the school year. Email or call me to ask for changes or to pose any questions. My contact information is found on the GSMS website and on the back of tonight's program.**
- **Nancy_Schwabe-Fry@elanco.org 717-354-1130**

Transition: May Visits



Each elementary school will come to the middle school during the day for

- Building tour
- Cafeteria presentation in the cafeteria
- Technology presentation
- Student Panel



Transition: Summer Open House



Open House for 7th Grade:

**Thursday, Aug 8
1-3pm and 4-6pm**

- ~Schedules
- ~Locker # and Locker Combo
- ~Self- Guided Tours
- ~Lanyards w/ student ID's



**Reminder to
complete yearly
update of your
Parent Portal after
July 10**

Garden Spot Secondary Campus

The Spartan Way: Doing What's Right, Doing Our Best, Doing For Others

Easing the Transition



- **First Weeks of School**
 - Orientation to school procedures and technology
 - Counselor Introduction
 - Community-building activities

Scheduled Transitions Activities



March:

- Classroom Visits with School Counselor for Course Selection
 - **Blue Ball** March 15
 - **Brecknock** March 19
 - **New Holland** March 20

May:

- Elementary students tour the Middle School 9:30 - 11:00 a.m.
 - **Blue Ball** May 17
 - **New Holland** May 18
 - **Brecknock** May 19
- Counselor to Counselor meetings for transition

August: Summer Open House

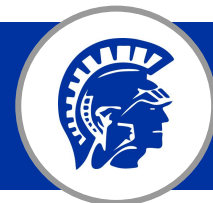
- Thursday, Aug. 8 1-3pm and 4-6pm

More Middle School Information

THREE HOUSES – ONE FAMILY



The Spartan Way Matrix



	The Spartan Way Matrix		
	Doing What's Right	Doing Our Best	Doing For Others
Classroom	Be prepared for class (ex. classroom materials, homework, computer) Stay in your assigned area Follow class instructions and expectations Follow academic honesty policy A1	Actively engage in learning Ask for help when you need it Be a problem-solver B1	Follow teacher-directed voice level (0-3) Speak respectfully to adults and peers Respect the space and belongings of others Look for ways to help your fellow Spartans Report safety concerns to adults C1
Hallway	Walk in hallways Go directly to your destination Stay on the right side of the hallway Only in hallway during class with permission Avoid hitting doorways, lockers, and signs A2	Eyes and body facing forward Keep hands to yourself B2	Use voice level 0-2 Hats or hoods should be off in the hallways Respect the space and belongings of others Look for ways to help your fellow Spartans Report safety concerns to an adult C2
Digital Citizenship	Use device for educational and school purposes only Demonstrate appropriate care and use of materials and equipment Keep your passwords private Follow academic honesty policy A3	Charge your device Actively engage in learning Ask for help when you need it Be a problem-solver B3	Use proper etiquette (ex. speak respectfully to one another during discussions, chats) Respect the devices of others Report safety concerns to an adult C3
Restroom	Use the restroom correctly Wash and dry hands Flush toilet after using Put trash in cans A4	Use e-hallpass system with teacher permission Quietly enter and exit B4	Use voice level 0-1 Give others privacy Wait your turn patiently and quietly Report safety concerns to an adult C4
Cafeteria	Wait your turn in line respectfully Sit in assigned area Keep food/drink in cafeteria Leave your area clean A5	Get all necessary items while in line Raise your hand for help Remain seated until dismissed B5	Use voice level 0-2 Speak respectfully to adults and peers Respect the food, space, and belongings of others Report safety concerns to an adult C5
Bus Arrival/Dismissal	Go directly to your destination Sit in your assigned seat Follow instructions of the bus driver A6	Keep your personal items with you Be aware of your surroundings B6	Use voice level 0-2 Speak respectfully to adults and peers Respect the space and belongings of others Report safety concerns to an adult C6
Assembly	Sit in your assigned seat Follow instructions Report safety concerns to an adult A7	Immediately respond to the request of adults Actively participate in assembly B7	Use voice level 0 Respect the space and belongings of others C7

Spartan Way Pay Day



Grade: _____

Learner Name:

Teacher Signature:

Learner returns ticket to the MS office to place in grade level box.

Garden Spot Secondary Campus

The Spartan Way: Doing What's Right, Doing Our Best, Doing For Others

Spartan Way Pay Day | School-Wide



The Spartan Way Pay Day



ZEUS

ATHENA

POSEIDON

Garden Spot Secondary Campus

The Spartan Way: Doing What's Right, Doing Our Best, Doing For Others

The Spartan Way Cafe

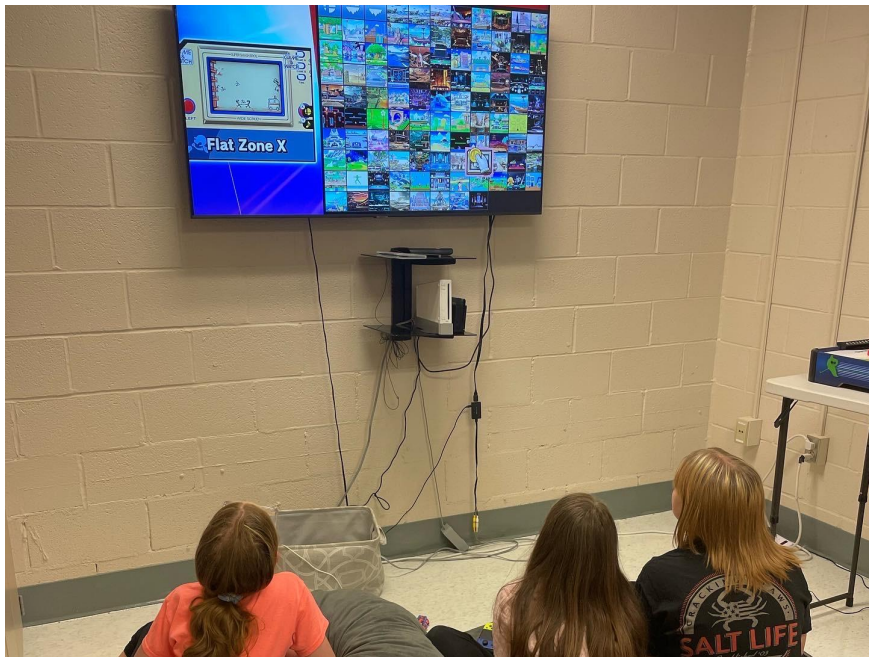


**DOING WHAT'S RIGHT | DOING OUR BEST
DOING FOR OTHERS**

Garden Spot Secondary Campus

The Spartan Way: Doing What's Right, Doing Our Best, Doing For Others

The Spartan Way Cafe



NEW CHANGES @ GSMS



CELL PHONES at GSMS



**NO Phones All
School Day**

LOCK IT

LOSE IT

OR



1st Offense - Turn into office until 2:30

2nd Offense - Parent/Guardian Retrieval

3rd Offense and Beyond - Parent Retrieval
and Potential Additional Discipline

Garden Spot Secondary Campus

The Spartan Way: Doing What's Right, Doing Our Best, Doing For Others

Ways for Students to Get Involved

GSMS Athletics



Boys

Football

Soccer

Cross Country

Basketball

Wrestling

Track & Field

Girls

Field Hockey

Soccer

Cross Country

Basketball

Cheerleading (Fall & Winter)

Volleyball

Track & Field



Garden Spot Secondary Campus

The Spartan Way: Doing What's Right, Doing Our Best, Doing For Others

Athletics...What do you need to know?



How to sign up for a Fall sport:

* Forms: www.elanco.org

- Activities
 - Athletics
 - Athletic forms

* Must have a physical after June 1.

* Fall sports begin August 12. All forms are due before that date.

* Winter & Spring sports have informational & sign up meetings throughout the year.

If you have any questions contact Jennifer Becker 354-1141

See the Athletic Tables in the Expo tonight!

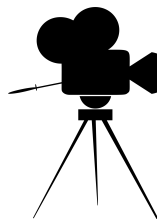
Garden Spot Secondary Campus

The Spartan Way: Doing What's Right, Doing Our Best, Doing For Others

Clubs



Mini-thon

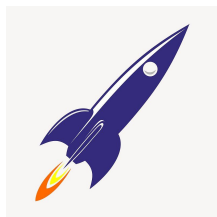


Movie Club

Project Linus

FCA (Fellowship of Christian
Athletes)

Rocketry Club



Art and Drawing Club



Lego Club

Environthon

Garden Spot Performing Arts



- Band
- Orchestra
- Chorus
- Jazz Band (club)

- GSPA Fall Play
- GSPA Spring Musical



Questions about Coming to the MS



Mrs. Schwabe-Fry

717-354-1130

nancy_schwabe-fry@elanco.org



Can't wait to work with you all!

Garden Spot Secondary Campus

The Spartan Way: Doing What's Right, Doing Our Best, Doing For Others

Tour - Cafeteria

Student Name JOE SPARTAN Elementary School NEW HOLLAND

GSMS Houses GSMS Teachers Initials <u>JR</u>	Yearbook Ruthley Initials <u>JK</u>	SAP Argie Hansen Initials <u>JA</u>	ElancOnline Swinsburg Initials <u>BS</u>	Student Council Rachel Lester Initials <u>RL</u>
Library Means Initials <u>LM</u>	Music Programs Henry Initials <u>CH</u>	GSPA Student Leaders Initials <u>HR</u>	Cafeteria Grooms/Lesley Initials <u>MLG</u>	
Rocket Club Donward Initials <u>DR</u>	Athletics Wilson Initials <u>_____</u>	School Nurse Fulmer Initials <u>BF</u>	Special Education Weich Initials <u>BW</u>	

Additional Tables: School-Based Counseling – Community Services Group

Time	Blue Cards	Gray Cards
6:00	Everyone begins in the Auditorium	Remain in Auditorium
6:10	Expo or Tour	Remain in Auditorium
6:27	Expo or Tour	Expo or Tour
6:45	Auditorium	Expo or Tour
7:02	Auditorium	
7:20	Everyone returns to Auditorium for Prize Drawing	



7:20PM in the Auditorium
Win Gift Cards,
Locker Items and
Spartan Merch!

Prize Drawing





**We look forward to welcoming you and your
child to the GSMS Family!**

Thank you for coming tonight!