

**GARDEN SPOT
MIDDLE SCHOOL**



PROGRAM OF STUDIES

2024-2025

EASTERN LANCASTER COUNTY SCHOOL DISTRICT

Mission Statement

Empowering learners as global thinkers and producers.

EASTERN LANCASTER COUNTY SCHOOL DISTRICT

669 EAST MAIN STREET

NEW HOLLAND, PA 17557

717-354-1500

Eastern Lancaster County (ELANCO) School District is an equal opportunity education institution and will not discriminate on the basis of race, color, national origin, gender, sexual orientation, or handicap in its activities, programs or employment practices as required by Title VI, Title IX, Section 504, and the Americans with Disabilities Act (ADA).

FORWARD

This program of studies has been prepared for use by learners and parents/guardians in deciding which courses are best suited to the learners' goals, interests, aptitudes, and abilities. A flexible curriculum has been constructed which permits learners to select courses to meet their individual needs and career aspirations.

Learners' choices may determine their chances for success in future years; therefore, learners are encouraged to select courses with the greatest of care. This endeavor should be thoroughly discussed with parents/guardians. For more information concerning course selection, college admissions requirements, or employment demands, learners and parents/guardians should arrange a consultation with a school counselor.

This guide is approved by the ELANCO School District Board of School Directors; its contents are therefore approved by district procedures.



Dear Garden Spot Secondary Campus Learners and Families:

The faculty, staff, and administration of the Garden Spot Secondary Campus are committed to ensuring each learner has access to the resources necessary to achieve his or her full potential. In addition, the Garden Spot Secondary Campus is committed to providing personalized learning experiences to foster a culture of inquiry, innovation, and discovery.

For the past few years, ELANCO has focused on how the district can better prepare learners to succeed after leaving the secondary campus hallways. This has resulted in minor changes in and out of the classroom, including ELANCO's Portrait of a Graduate, and more classrooms using technology to personalize learning. Personalized needs are addressed through various opportunities that promote each learner's academic, social, and emotional development.

Exciting changes are planned for the Secondary Campus over the next few years. Through a guaranteed and viable curriculum, the integration of technology, and the collaboration of departments, learners will graduate ready to compete in the global economy.

We believe personalized learning prepares learners for their future by giving them a voice and choice in their education. We understand that everyone learns at different rates and in different styles. We also understand that technology challenges the traditional teaching model embraced during the 20th century. Through our learning options (traditional, online, etc.), elective courses, and many other offerings, we believe we are blazing a path for a new way of learning. We appreciate your continued support in this endeavor.

Respectfully,



Matthew J. Sanger, Ed.D.
Principal

TABLE OF CONTENTS

<u>Program of Study Overview</u>	4
<u>Secondary Administration and School Counseling Department</u>	5
<u>Portrait of a Graduate</u>	6
<u>Middle School Course Requirements</u>	7
<u>Grading and Weighting System</u>	7
<u>Earning High School Credits at GSMS</u>	8
<u>Course Selection Process Overview</u>	9-10
Course Descriptions	
<u>English Language Arts</u>	11-12
<u>English Learners (EL)</u>	13
<u>Mathematics</u>	14-15
<u>Science</u>	16
<u>Social Studies</u>	17
<u>Pathway Electives</u>	18-26
<u>Special Services</u>	27-31

PROGRAM OF STUDIES OVERVIEW

Changes to the Program of Studies:

Eastern Lancaster County School District reserves the right to alter the requirements and offerings as printed when deemed to be the result of sound educational planning or when the results are based on changes in federal, state, or local regulations. Changes made will be conveyed to learners via an addendum sheet to this guide and/or relayed by school staff via informational meetings and/or announcements.

ELANOnline (EOL) Program Overview and Enrollment

Learners who have not already enrolled as full-time EOL students would need an EOL orientation meeting with their parent/guardian and assigned school counselor to sign up for their EOL courses. Parents/Guardians of learners who want to have an orientation meeting will schedule a meeting with the learner's assigned school counselor and [Mr. Swinsburg](#) (Grades 7-9). The learner should complete the [SmarterMeasure online readiness assessment](#) before the meeting. The learner, parent/guardian, school counselor, and additional stakeholders will then engage in dialogue about the policies and procedures of the program and the fit of the virtual program for the learner before he/she is enrolled. The learner will be registered into the appropriate EOL courses if approved. There are no new EOL enrollments after the first two weeks of the quarter unless a learner takes an additional course to their schedule or extenuating circumstances exist. Students who unenroll in EOL courses within the first 14 days will enroll in traditional brick-and-mortar classes. To start their EOL learning experience, all **new** middle school learners must come into the EOL Virtual Center for 10 (ten) school days as part of an acclimation period to troubleshoot and assist enrollees.

SECONDARY CAMPUS ADMINISTRATION AND SCHOOL COUNSELORS

GARDEN SPOT MIDDLE SCHOOL

Dr. Matthew Sanger – Secondary Campus Principal

Grades 7-12

matthew_sanger@elanco.org

Mr. Robert Arrick - Assistant Principal

Grade 7 - 2024-2025 School Year

Grade 8 - 2025-2026 School Year

robert_arrick@elanco.org

Ms. Ashley Stern - Assistant Principal

Grade 8 - 2024-2025 School Year

Grade 7 - 2025-2026 School Year

ashley_stern@elanco.org

GARDEN SPOT HIGH SCHOOL

Mr. Robert Fennimore - Assistant Principal

Grades 9 & 10

robert_fennimore@elanco.org

Ms. Stacey Hoffman - Assistant Principal

Grades 11 & 12

stacey_hoffman@elanco.org

SECONDARY CAMPUS SCHOOL COUNSELORS

GARDEN SPOT MIDDLE SCHOOL

Mrs. Jill Bielawski

Grade 8 - 2024-2025 School Year

Grade 7 - 2025-2026 School Year

jill_bielawski@elanco.org

Mrs. Nancy Schwabe-Fry

Grade 7 - 2024-2025 School Year

Grade 8 - 2025-2026 School Year

nancy_schwabe-fry@elanco.org

GARDEN SPOT HIGH SCHOOL

Mrs. Krista John

Grade 9 and Grade 10 (IEP)

krista_john@elanco.org

Mrs. Ellen Cantymagli

Grades 10-12 (A-L)

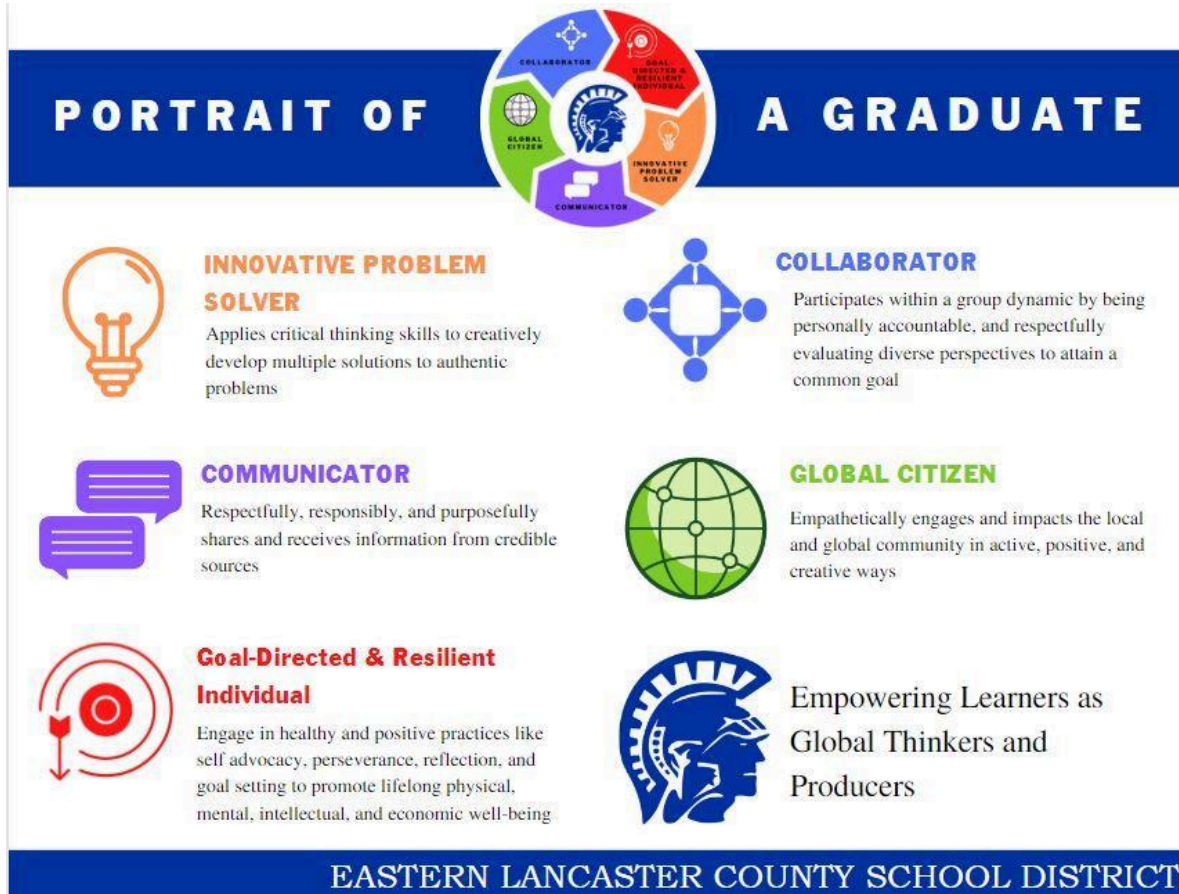
ellen_cantymagli@elanco.org

Mrs. Raegan Mellinger

Grades 10-12 (M-Z)

raegan_mellinger@elanco.org

PORTRAIT OF A GRADUATE



Collaborator	Participates within a group dynamic by being personally accountable and respectfully evaluating diverse perspectives to attain a common goal. (Adapted from Center for Deeper Learning- Reynolds City Schools, 2020)
Communicator	Respectfully, responsibly, and purposefully shares and receives information, ideas, and opinions using credible sources when needed.
Global Citizen	Empathetically engages and impacts the local and global community in active, positive, and creative ways.
Goal-Directed, Resilient Individual	Engages in healthy and positive practices like self-advocacy, perseverance, reflection, and goal setting to promote lifelong physical, mental, intellectual, and economic well-being.
Innovative Problem Solver	Applies critical thinking skills to creatively develop multiple solutions to authentic problems. (Adapted from Center for Deeper Learning- Reynolds City Schools, 2020)

MIDDLE SCHOOL COURSE REQUIREMENTS

Garden Spot Middle School Credits:

To be prepared for promotion to Garden Spot High School, a learner shall complete the required courses of instruction with proficiency scores and demonstrate mastery of the Pennsylvania Academic Standards.

<u>Subject</u>	<u>Credits</u>
English Language Arts	2.0 (1.0 per grade level)
Mathematics	2.0 (1.0 per grade level)
Science	2.0 (1.0 per grade level)
Social Studies	2.0 (1.0 per grade level)
Health & Physical Education	0.25
Electives	<u>1.75</u>

10.0 Total Credits

GRADING SCALE AND WEIGHTING SYSTEM

Grading Scale and Assignment Weighting – Garden Spot Middle School:

7th Grade Core Courses (ELA, Math, Science, Social Studies)	70% weight of grade is summative (assessments/performance measures)	30% formative (e.g. enrichment activities, homework, weekly assignments)
8th Grade Core Courses (ELA, Math, Science, Social Studies)	80% weight of grade is summative (assessments/performance measures)	20% formative (e.g. enrichment activities, homework, weekly assignments)

Percentage: Report card and final grades are computed by transferring numerical grades into letter grades in the following manner:

A	=	93% - 100%	= 4.0 Quality Points
A-	=	90% - 92%	= 3.7 Quality Points
B+	=	87% - 89%	= 3.3 Quality Points
B	=	83% - 86%	= 3.0 Quality Points
B-	=	80% - 82%	= 2.7 Quality Points
C+	=	77% - 79%	= 2.3 Quality Points
C	=	73% - 76%	= 2.0 Quality Points
C-	=	70% - 72%	= 1.7 Quality Points
D+	=	67% - 69%	= 1.3 Quality Points
D	=	63% - 66%	= 1.0 Quality Points
D-	=	60% - 62%	= 0.7 Quality Points
F	=	< 60%	= 0.0 Quality Points

Earning High School Credits at Garden Spot MS

Learners can earn high school credits in middle school for the following courses:

- Keystone Algebra – Math credit (teacher recommendation or GIEP)
- Keystone Geometry – Math credit (teacher recommendation or GIEP)
- Keystone English 9 – ELA credit (teacher recommendation or GIEP)
- Honors Earth & Space Science - Science Credit (teacher recommendation or GIEP)

Credits and grades for Keystone Algebra, Keystone Geometry, and Keystone English 9 are awarded based on the following:

1. Learners must pass the course each semester with an A, B, C, or D.
2. Learners must earn Proficient or Advanced on the applicable Keystone exam.

******These grades earned will count towards their Garden Spot High School grade point average (GPA). If your child is not satisfied with the grade earned, he or she should schedule to retake the course for the next year to improve the grade. Scheduling high school courses in middle school is an enriching and rigorous undertaking that requires a serious commitment from the learner and parent. Therefore, it is important to give careful consideration before signing up for these courses.

NCAA Eligibility

Student-athletes considering participation in collegiate athletics should explore the NCAA (National Collegiate Athletic Association) requirements for eligibility. A high school diploma alone is insufficient to permit a student to participate in college athletics. The NCAA has a set of minimum standards that students must meet to be eligible. Detailed information can be found at www.eligibilitycenter.org. The information included here is only the most basic information about requirements. Learners interested in playing collegiate athletics are strongly encouraged to review the detailed requirements reported on the clearinghouse site to ensure they make appropriate course selection decisions.

Course Selection Process Overview

The Course Selection Process:

1. **Carefully review the entire Program of Studies** to take full advantage of the variety and flexibility of offerings. Refer to your grade level's suggested guidelines for grade-specific guidance on requirements and recommended courses.
2. **The minimum number of credits learners may select is five (5).** Learners will not be permitted to take less than five credits.
3. After choosing your core courses and other required courses, identify elective courses that interest you to complete your schedule. **You must also identify alternate choices. Having multiple “backup” alternate selections for every elective course will help ensure you have a complete schedule if courses become full or your primary choices conflict with one another.**
4. **Ask questions.** Your fellow learners (particularly those older than you), your parents, your teachers, and your counselor are all great sources of information.

Course Offerings & Alternate Selections:

The listing of a specific course in this planning guide does not guarantee that it will be taught each school year. Administration determines whether a course will be offered based on the total course enrollment, the type of course involved, and available staffing. Even if a course is offered, learners are not guaranteed enrollment. Learners may have conflicts in their schedules, or the capacity of a course may be reached. Consequently, learners must select alternate choices to maximize the chance that they will have a complete schedule to their liking. ***Please note that your alternate choices should differ from your elective choices, and you may be enrolled in one of these courses if necessary.***

Schedule Changes:

Learners are required to carry five credits each school year. Any changes to student schedules must maintain the required five credits.

Changes Before **this** School Year Ending:

1. Learners and counselors will complete their initial selections via PowerSchool. After course selection is closed, all changes must be requested through the school counseling office.
2. Learners may request changes to their course selections up until the ***end of the current school year and over the summer. After that time, no changes will be made except for medical reasons or scheduling errors.***

Requests for certain teachers or classes with specific classmates will not be entertained or honored. Exceptions to this rule will only be made when a student previously had the teacher and was unsuccessful in the class (60% or below).

Changes Once the New School Year Begins:

1. Once the new school year begins, learners and parents must request this through the counseling office. These requests will be honored on a case-by-case basis depending on availability and individual learner circumstances.

Curriculum revision is an ongoing process with learners, faculty, and administrators making recommendations for curriculum additions periodically. Therefore the course offerings may be modified after this guide is published and before student schedules are generated. When possible, learners will be notified of these changes so that selections can be modified. Ultimately, the ELANCO Board of School Directors makes the final determination on the curriculum offered at Garden Spot Middle School.

English Language Arts

Content Specialist: TBD

Course Sequence:

ELA	7	8
Accelerated		Keystone English 9 Honors*
Honors	ELA 7 Honors (07LA1)	ELA 8 Honors (08LA1)
Academic	ELA 7 (07LA2)	ELA 8 (08LA2)

* = Teacher Recommendation or GIEP

English Language Arts 7

Offered Grades: 7 **(Required)**

Yearlong: Daily

Credit: 1.00 Credit

Prerequisite(s): None

Modality: Traditional or ELANOnline

Course Description:

In 7th grade ELA, learners will improve their comprehension of fiction, nonfiction, and poetry. Learners will use literature as a tool for understanding their culture and the culture of others. Learners will use standard English grammar and usage when writing, speaking, or listening. Learners will develop 21st Century Skills: teamwork, problem-solving, research, and using technology to learn and communicate. *Completing [SmarterMeasure](#) is a requirement to register for courses in the ELANOnline modality.*

English Language Arts 8

Offered Grades: 8 **(Required)**

Yearlong: Daily

Credit: 1.00 Credit

Prerequisite(s): None

Modality: Traditional or ELANOnline

Course Description:

In 8th grade ELA, learners will improve their comprehension of fiction, nonfiction, and poetry. Learners will use literature as a tool for understanding their culture and the culture of others. Learners will use standard English grammar and usage when writing or speaking. Learners will develop 21st Century Skills: teamwork, problem-solving, research, and using technology to learn and communicate. *Completing [SmarterMeasure](#) is a requirement to register for courses in the ELANOnline modality.*

Keystone English 9

Offered Grades: 8-9

Semester: Daily

Credit: 1.00 Credit

Prerequisite(s): Teacher Recommendation or GIEP

Modality: Traditional or ELANOnline

Course Description:

Accelerated learners will engage in English study that develops and hones the crucial abilities of reading, writing, speaking, and listening. A major emphasis on writing routinely with a specific purpose in a variety of modes—including narrative, expository, persuasive, and research—serves as the main thrust of this course. Learners will also read, interpret, and write about literature, including short fiction and nonfiction, the novel, and drama. Critical reading, writing, and thinking strategies will equip learners to build comprehension and develop their analytical writing skills. Placement in the following courses is dependent upon a combination of individual student data, historical grades, and a teacher recommendation. *Completing [SmarterMeasure](#) is a requirement to register for courses in the ELANOnline modality.*

Course # 3305 → Keystone English 9 Honors (Weighted Credit)

Course # 3310 → Keystone English 9

English Learners (EL)

English Language Development (ELD)

Offered Grades: 7-8

Yearlong: Daily

Credit: 1.00 Credit

Prerequisites: Learners are identified by the Home Language Survey and individual ESL needs assessment. All qualifying English Learners are served by the program according to their individual needs.

Modality: Traditional

Program Description:

This program is intended for learners whose native language is not English and whose skills in English are below the level of native English-speaking classmates. Listening, speaking, reading, and writing in English are offered as well as support in other subject areas. Learners will be assigned from one (1) period to two (2) periods a day, depending on their proficiency.

ELD Beg – Beginner Level 1 → 1-2 periods per day

ELD Int1 – Intermediate Level 2 → 1 period per day

ELD Adv2 – Advanced Level 3 → 1 period per day

Mathematics

Content Specialist: Rachel Leister

Course Sequence:

Mathematics	7	8
Accelerated*	Keystone Algebra A/B* ✦ (7036/7037) Keystone Geometry* (7290/7295)	
Honors	Mathematics 7 Honors (07MATH1)	
Academic	Mathematics 7 (07MATH2)	Mathematics 8 (08MATH2)

* = Teacher Recommendation or GIEP

✦ = Keystone Exam

Mathematics 7

Offered Grades: 7 (**Required**)

Yearlong: Daily

Credit: 1.00 Credit

Prerequisite(s): None

Modality: Traditional or ELANOnline

Course Description:

Mathematics 7 is designed to prepare you for everyday mathematical situations. You will learn important fundamental skills leading to further understanding of algebraic concepts. Topics include a wide variety of subjects: area, volume, ratios, proportions, rational numbers, equations and inequalities, angle relationships, data analysis, and probability. More importantly, you will learn how mathematics plays an important role in your life! Completing [SmarterMeasure](#) is a requirement to register for courses in the ELANOnline modality.

Mathematics 8

Offered Grades: 8 (**Required**)

Yearlong: Daily

Credit: 1.00 Credit

Prerequisite(s): None

Modality: Traditional or ELANOnline

Course Description:

Mathematics 8 is designed to prepare you for taking Keystone Algebra next year. The course focuses on three critical areas: (1) formulating and reasoning about expressions and equations, including modeling an association in bivariate data with a linear equation and solving linear equations and systems of linear equations; (2) grasping the concept of a function and using functions to describe quantitative relationships; (3) analyzing two- and three-dimensional space and figures using distance, angle, similarity and congruence, and understanding and applying the Pythagorean Theorem. Completing [SmarterMeasure](#) is a requirement to register for courses in the ELANOnline modality.

Keystone Algebra A/B



Offered Grades: 7-9

Yearlong: Daily

Credit: 1.00 Credit (1.00 High School Credit*)

Prerequisite(s): Teacher Recommendation or GIEP

Modality: Traditional or ELANOnline

Course Description:

This is an honors-level course designed to help learners think critically, ask questions, and solve real-world problems. This course is a study of the important concepts and skills of Algebra, including operations with simple algebraic expressions, positive and negative numbers, linear equations in one or two variables, graphic representation, polynomial expressions, rational expressions, and quadratic equations. Reading and problem-solving are emphasized throughout the course. Learners will use scientific calculators and be able to decide when their use is appropriate. *Upon completion of this course, learners will be required to complete the Algebra I Keystone Exam. Completing [SmarterMeasure](#) is a requirement to register for courses in the ELANOnline modality.*

**Learners who have taken Keystone Algebra prior to ninth grade, and score Proficient or Advanced on the Algebra I Keystone Exam, will be awarded one (1) math credit toward the four required math credits at Garden Spot High School and will show on their high school transcript.*

Keystone Geometry



Offered Grades: 8-11

Semester: Daily

Credit: 1.00 Credit (1.00 High School Credit*)

Prerequisite(s): Successful completion of Keystone Algebra 1

Modality: Traditional or ELANOnline

Course Description:

This course features a unified treatment of plane and solid geometry, the introduction of coordinate geometry, and development of the relationship between Algebra and Geometry. The learners will develop a vocabulary of geometry terms and apply geometry concepts and formulas to all types of polygons and other geometric figures. *Completing [SmarterMeasure](#) is a requirement to register for courses in the ELANOnline modality.*

Course # 7290 → Keystone Geometry

Course #7295 → Keystone Geometry Honors (Weighted)

Science

Content Specialist: Amanda Knight

Course Sequence:

Science	7	8
	Science 7 (8710MS)	Science 8 (8810MS)

Science 7

Offered Grades: 7 **(Required)**

Yearlong: Daily

Credit: 1.00 Credit

Prerequisite(s): None

Modality: Traditional or ELANOnline

Course Description:

The 7th-grade science course explores life science topics. Learners will be engaging with the material through various hands-on lessons and inquiry-based labs. The scientific process, along with the measuring and graphing, will be embedded throughout all of the units in the course. The major goals for the course are listed as follows: Develop an appreciation and curiosity for Life Science and related sciences, Relate Life Science concepts to daily living, Handle and manipulate scientific equipment and materials properly, and develop processes of inquiry and problem-solving. *Completing [SmarterMeasure](#) is a requirement to register for courses in the ELANOnline modality.*

Science 8

Offered Grades: 7 **(Required)**

Yearlong: Daily

Credit: 1.00 Credit

Prerequisite(s): None

Modality: Traditional or ELANOnline

Course Description:

The 8th-grade program is designed to review science practices from 7th grade, including inquiry, graphing, measurement, problem-solving and handling/manipulating equipment and materials safely. Emphasis will be put on hands-on activities, as well as organization skills, cooperative learning skills, note-taking, computer graphing skills, and study skills. *Completing [SmarterMeasure](#) is a requirement to register for courses in the ELANOnline modality.*

Social Studies

Content Specialist: Christina Jirele

Course Sequence:

Social Studies	7	8
	Social Studies 7 (9730MS)	Social Studies 8 (9830MS)

Social Studies 7

Offered Grades: 7 (**Required**)

Yearlong: Daily

Credit: 1.00 Credit

Prerequisite(s): None

Modality: Traditional or ELANCOOnline

Course Description:

Social Studies 7 teaches learners to summarize the social, political, cultural, and economic contributions of individuals and groups in world history. Learners will explain the importance of historical documents, artifacts, and sites that are critical to world history, analyze cause and effect and the impact of historic events, and evaluate historical sources for bias and multiple perspectives. Finally, learners will be able to differentiate how continuity and change have impacted world history in the following ways: belief systems and religions, commerce and industry, technology, politics and government, physical and human geography, and social organizations. We will use themes to help us explore trends throughout history and then examine examples of how those same themes continue to impact our 21st-century global society. *Completing [SmarterMeasure](#) is a requirement to register for courses in the ELANCOOnline modality.*

Social Studies 8

Offered Grades: 7 (**Required**)

Yearlong: Daily

Credit: 1.00 Credit

Prerequisite(s): None

Modality: Traditional or ELANCOOnline

Course Description:

Social Studies 8 learners will explore American history from the formation of our government in the late 18th century to our country's involvement in the Great War of the early 20th century. Learners will also touch on topics such as the westward expansion of the United States of America, the deadly Civil War, the long-lasting influences of the Progressive movement, and the rise of the United States as a global power during the Great War. Finally, learners will learn how geography, economics, technology, individuals, and events have helped shape our country. *Completing [SmarterMeasure](#) is a requirement to register for courses in the ELANCOOnline modality.*

Pathway Elective Courses

At Garden Spot Middle School, we align our elective courses to the transdisciplinary transfer goals of the Portrait of a Graduate and pathways to ensure we are setting up our learners to be global thinkers and producers.



Pathway: Agricultural Science and Natural Resources



Agriculture, Food & Natural Resources (0240MS)

Offered Grades: 7-8

Quarter: Daily

Credit: 0.25 Credit

Prerequisite(s): None

Modality: Traditional

Course Description:

Introduction to Agriculture, Food, and Natural Resources introduces learners to agricultural opportunities and the pathways of study in agriculture. Science, mathematics, reading, and writing components are woven in the context of agriculture, and learners will use the introductory skills and knowledge developed in this course throughout the CASE curriculum. The course is structured to enable all learners to experience an overview of the fields of agricultural science and natural resources so that learners may continue through a sequence of courses through high school. Learners explore career and post-secondary opportunities in each area of the course.



Pathway: Arts & Communication



Foundations of Art 1 (5620MS)

Offered Grades: 7-8

Quarter: Daily

Credit: 0.25 Credit

Prerequisite(s): None

Modality: Traditional

Course Description:

This course is the academy level course that each middle school learner would participate in to fulfill visual arts course expectations. This course introduces learners to four major units in visual arts - Intro to Drawing, Color Theory, Ceramics, and Print-making.

Foundations of Art 2 (5630MS)

Offered Grades: 7-8

Quarter: Daily

Credit: 0.25 Credit

Prerequisite(s): Foundations of Art 1

Modality: Traditional

Course Description:

This course builds on the Foundations of Art units and includes units in observational drawing, color theory, ceramics, and 2-D design.

Advanced Academy of Art (5640MS)

Offered Grades: 7-8

Quarter: Daily

Credit: 0.25 Credit

Prerequisite(s): Foundations of Art 1 and 2

Modality: Traditional

Course Description:

A truly learner-driven learning experience where learners exploring visual arts as a pathway choice will use a variety of materials to create original works of art, establishing a concentration (theme) through the 9-week course. Learners will be encouraged to explore materials and processes from STEAM areas, write artists' statements about the concentration, and design and participate in an ACADEMY Art Exhibit at the end of the course.



Pathway: Arts & Communication



World Language: Exploratory German and Spanish (3900)

Offered Grades: 7-8

Quarter: Daily

Credit: 0.25 Credit

Prerequisite(s): None

Modality: Traditional

Course Description:

The course includes an introduction to the language and customs of Spanish and German-speaking countries. Language topics covered include the alphabet, numbers, introducing oneself, colors, animals, and basic dialogues. Cultural topics may include famous Spanish/German speakers, artists, and musicians; holidays and celebrations; and basic geographical facts.

Introduction to Broadcasting (7750MS)

Offered Grades: 7-8

Quarter: Daily

Credit: 0.25 Credit

Prerequisite(s): None

Modality: Traditional

Course Description:

The purpose of the broadcasting course is for learners to learn the skills and techniques involved in the production of actual television programming. While this includes learning to operate the equipment involved, it, more importantly, centers on the writing of workable scripts, the coordination of personnel into an effective collaborative team, and the incorporation of the script with personnel to produce a quality television program. Learners will also experience the different roles and responsibilities of a working Media Studio.

Guitar / Ukulele (5110MS)

Offered Grades: 7-8

Quarter: Daily

Credit: 0.25 Credit

Prerequisite(s): None

Modality: Traditional

Course Description:

In this entry-level music class, learners will explore fundamental concepts of music as they apply to ukulele and guitar. These concepts include rhythm basics, reading treble clef notes, and understanding basic chord structure. The course will be divided into two sections: approximately three weeks on the ukulele and then six weeks on the guitar. Learners will be expected to perform at least twice for the class, either in small groups or as a solo. One performance session will occur at the end of the ukulele section, and the second will be on guitar at the end of the quarter.



Pathway: Arts & Communication



Music Production (5120MS)

Offered Grades: 7-8

Quarter: Daily

Credit: 0.25 Credit

Prerequisite(s): None

Modality: Traditional

Course Description:

Music Production is an entry-level music class open to any 7th or 8th-grade learner. In this class, the learners will cover basic music production concepts, including digital audio workstation (DAW) essentials, music creation, and introductory recording and mixing techniques. As a non-prerequisite class, the learners will also explore career options in music business and production by making assignments and projects relatable to real-world situations. By the end of this course, learners will understand the role of a music producer, be able to navigate basic functions of a DAW, and demonstrate proficiency in audition recording and editing.

Advanced Production/Performance (5130MS)

Offered Grades: 7-8

Quarter: Daily

Credit: 0.25 Credit

Prerequisite(s): Ukulele and Guitar or Music Production

Modality: Traditional

Course Description:

This is a second-tier music class in a line of humanities electives. In order to sign up for this course, learners must have already taken either Ukulele/Guitar or Basic Music Production. Advanced Production/Performance aims to combine the two skill sets from the prerequisite classes to create collaborative-focused courses. Throughout the quarter, learners will engage in various projects that will draw on the knowledge and talents of performers and producers in the class. These projects will include song covers, finishing a song based on a premade template, and creating an original song from scratch.

Applied Music - Band | Choir | Orchestra (5020MS B, 5020MS C, 5020MS O)

Offered Grades: 7-8

Yearlong: Daily (A/B)

Credit: 0.50 Credit

Prerequisite(s): None

Modality: Traditional

Course Description:

A learner may choose to be a part of band, chorus, orchestra, or multiple performing groups. Applied Music includes the study of and subsequent appreciation of music through performance. Learning the art of music performance through concentration on all the aspects - mental, physical, spiritual, scientific, artistic, self-disciplinary actions, historical, and ensemble techniques - is the goal. Extensions of Applied Music are the section rehearsal, the private lesson, the small ensemble, and the county, district, regional, and all-state select groups.

Participation in all learner assemblies and public performances is a requirement for this course.

This course does not operate on a semester basis. The offerings in Applied Music are designed to cover the entire school year. ***The option for release at the end of the first semester does not exist.***

Music Exploration (5105MSEOL)

Offered Grades: 7-8

Quarter: Daily

Credit: 0.25 Credit

Prerequisite(s): None

Modality: ELANOnline

Course Description:

What comes to mind when you hear the word ‘music’? Do you think about your favorite band or artist? In this course, you’ll learn about how we hear music; how music affects our lives; essential elements of music like rhythm, pitch, and harmony; different musical genres; singing and your voice; various instruments; music composition; and the history and culture of music over the years. *Completing [SmarterMeasure](#) is a requirement to register for courses in the ELANOnline modality.*



Pathway: Business, Management & Administration



Coming Soon in 2025-2026 School Year



Pathway: Health Sciences



Health & Physical Education A (4740MS)

Offered Grades: 7 **[REQUIRED]**

Quarter: Daily

Credit: 0.25

Prerequisite(s): None

Modality: Traditional or ELANOnline

Course Description:

This course will cover the following physical education topics: team games (i.e. soccer, team handball, basketball, and floor hockey), fitness based activities, and individual activities (i.e. gaga ball, nine square in the air, and ping pong). The course will also cover the following health education topics: nutrition, body systems/exercise, stress/alcohol/tobacco, and fitness. *Completing [SmarterMeasure](#) is a requirement to register for courses in the ELANOnline modality.*

Team Games (4745)

Offered Grades: 8

Quarter: Daily

Credit: 0.25

Prerequisite(s): Health & PE A

Modality: Traditional

Course Description:

This course will offer traditional, competitive team games as an elective for 8th grade PE. Games include football, basketball, whiffle ball, team handball, soccer, speed ball, floor hockey, and ultimate Frisbee.

Life-long Fitness and Outdoor Education (4750)

Offered Grades: 8

Quarter: Daily

Credit: 0.25

Prerequisite(s): Health & PE A

Modality: Traditional

Course Description:

The purpose of this elective is to provide an alternative for learners who desire physical activity, but not in the traditional games of football, soccer, basketball, and similar games where physical contact may become an issue for some learners. This course seeks to promote lifelong health and fitness through the use of the fitness center, teaching fitness programming as well as skills that would translate into a traditional health club setting beyond high school. Education includes but is not limited to, indoor rock climbing, mountain biking, disc golf, badminton, as well as strength and cardiovascular workouts twice a week. First Aid Basics will also be covered for one to two days. The course will be five days a week of activity.



Pathway: Human Services



Global Social Problems (7125MS)

Offered Grades: 7-8

Quarter: Daily

Credit: 0.25 Credit

Prerequisite(s): None

Modality: Traditional

Course Description:

The course is designed to teach learners the importance of continually improving oneself so that they can improve the world around them. This includes one's home, one's school, one's community, and the world outside of one's community. The learners will be encouraged and mentored throughout the course to work towards improving themselves through learning habits to help them be more successful in life and then take that to the next level of helping others in the world. The possibilities are purposely limitless as the course will solely depend upon each individual's passions and the learners will be empowered by having endless opportunities of how they will choose to make a difference in the world. All learners who take this course will be required to read *The Seven Habits of Highly Effective Teens*.

Ice House (7140MS)

Offered Grades: 8

Quarter: Daily

Credit: 0.25 Credit

Prerequisite(s): None

Modality: Traditional

Course Description:

The Ice House Program builds resilience, creative problem-solving, and collaboration skills while helping learners recognize the applications for their education.

This course is designed to empower learners during a developmental phase of life and enhance their curiosity. In addition, it encourages creativity and critical thinking, communication, teamwork, and other entrepreneurial skills – skills that will enable them to succeed regardless of their chosen path. Most notably, the Ice House Program outcomes are designed to create more prepared and engaged learners, increase self-efficacy, develop entrepreneurial attitudes, behaviors, and skills, and assist in meeting college-readiness and career-readiness standards. All learners who take this course must read *Who Owns the Ice House?*



Pathway: STEM



Problem-Solving 1 (7111MS)

Offered Grades: 7-8

Quarter: Daily

Credit: 0.25 Credit

Prerequisite(s): None

Modality: Traditional

Course Description:

In this course, learners will use creativity and apply elements of the Engineering Design Process to problem solve with hands-on skills. Through computer-based applications, learners will gain experience with emerging 21st-century technologies, such as 3D Printing, Laser Engraving, Robotics, and Drones.

Problem-Solving 2 (7112MS)

Offered Grades: 7-8

Quarter: Daily

Credit: 0.25 Credit

Prerequisite(s): Problem-Solving 1

Modality: Traditional

Course Description:

In this second-level course, learners will continue with deeper applications of the skills gained in the prerequisite course, Problem-Solving 1, while also learning new skills in Acrylic Bending, Vacuum Forming, and Electronics, among others. Learners will collaborate to identify relevant issues they are passionate about and apply their skills in generating solutions that will improve the quality of life in our community and globally.

Introduction to Technology (7730MS)

Offered Grades: 7-8

Quarter: Daily

Credit: 0.25 Credit

Prerequisite(s): None

Modality: Traditional

Course Description:

This course introduces learners to the definition of technology, discussing the negative and positive impacts of technology on society. It will focus on transportation and construction technology with projects including boats and bridges.



Pathway: STEM



Exploring Technology (7740MS)

Offered Grades: 7-8

Quarter: Daily

Credit: 0.25 Credit

Prerequisite(s): Introduction to Technology

Modality: Traditional

Course Description:

This course will dive deeper into the impacts of technology and will utilize units such as communication, manufacturing, and design process. Projects will include manufacturing birdhouses, utilizing Adobe Express, and creating posters and video productions.

Introduction to Computer Programming (7620)

Offered Grades: 7-8

Quarter: Daily

Credit: 0.25 Credit

Prerequisite(s): None

Modality: Traditional

Course Description:

This course is designed to engage and excite future computer programmers by providing you with industry-proven skills for the coding job market! Jump in as you learn Python and begin to create dazzling backgrounds. Create groundbreaking interactive designs controlled by the click of a mouse or the press of a key! Once you master the basics of mouse movements, shape modification, automated movements, and looping the only limit will be your imagination!

Special Services

Emotional Support Social Skills (10100)

Offered Grades: 7-8

Yearlong: Daily

Credit: 1.00 Credit

Prerequisite(s): IEP Team Recommendation Only

Modality: Traditional

Course Description:

Social Skills and behavior interventions to meet individual student's needs as determined by student's IEP.

Fundamentals of ELA (9352)

Offered Grades: 7-8

Yearlong: Daily

Credit: 1.00 Credit

Prerequisite(s): IEP Team Recommendation Only

Modality: Traditional

Course Description:

Course provides specially designed instruction in reading and/or written expression, meet the criteria for this course as determined by his/her IEP team. Learners are provided instruction in reading decoding, reading comprehension, reading fluency, and written expression based on identified needs per the IEP. Each student will work towards his/her individualized IEP goals in this class. Instruction will be in small groups based on student needs.

Fundamentals of Math (9351)

Offered Grades: 7-8

Yearlong: Daily

Credit: 1.00 Credit

Prerequisite(s): IEP Team Recommendation Only

Modality: Traditional

Course Description:

The Foundations of Mathematics course will provide learners with specially designed instruction, targeting individual needs including basic skills in math computation, math calculations, solving real-world problems, measurement skills, and basic algebra skills. Learners will receive small group instruction and computer-based instruction focusing on specific skills as identified needs per the IEP. Learners will also have exposure to grade-level eligible content, with modifications per his/her IEP.

Specialized ELA (10090)

Offered Grades: 7-8

Yearlong: Daily

Credit: 1.00 Credit

Prerequisite(s): IEP Team Recommendation Only

Modality: Traditional

Course Description:

Modified English Language Arts curriculum and direct instruction interventions to meet individual student's needs as determined by student's IEP.

Specialized Math (10030)

Offered Grades: 7-8

Yearlong: Daily

Credit: 1.00 Credit

Prerequisite(s): IEP Team Recommendation Only

Modality: Traditional

Course Description:

Modified mathematics curriculum and direct instruction interventions to meet individual student's needs as determined by student's IEP.

Specialized Science (10050)

Offered Grades: 7-8

Yearlong: Daily

Credit: 1.00 Credit

Prerequisite(s): IEP Team Recommendation Only

Modality: Traditional

Course Description:

Modified science curriculum and direct instruction interventions to meet individual student's needs as determined by student's IEP.

Specialized Social Studies (10070)

Offered Grades: 7-8

Yearlong: Daily

Credit: 1.00 Credit

Prerequisite(s): IEP Team Recommendation Only

Modality: Traditional

Course Description:

Modified social studies curriculum and direct instruction interventions to meet individual student's needs as determined by student's IEP.

Functional Academics (9731MS)

Offered Grades: 7-8

Yearlong: Daily

Credit: 1.00 Credit

Prerequisite(s): IEP Team Recommendation Only

Modality: Traditional

Course Description:

This course is designed to teach functional basic Reading, Writing, and Math skills based on identified needs per the IEP.

Functional Communications (#9732MS/ASComm)

Offered Grades: 7-8

Yearlong: Daily

Credit: 1.00 Credit

Prerequisite(s): IEP Team Recommendation Only

Modality: Traditional

Course Description:

This course is designed to develop communication skills in a small group setting based on a student's needs as identified in his/her IEP.

Functional Daily Living Skills / Science (9734MS)

Offered Grades: 7-8

Yearlong: Daily

Credit: 1.00 Credit

Prerequisite(s): IEP Team Recommendation Only

Modality: Traditional

Course Description:

This course is designed to develop skills related to independent living. The primary emphasis of this course may include meal planning, purchasing and preparation, cleaning, laundry, and other functional independent living skills.

Functional Vocational Skills / Social Studies (9735MS)

Offered Grades: 7-8

Yearlong: Daily

Credit: 1.00 Credit

Prerequisite(s): IEP Team Recommendation Only

Modality: Traditional

Course Description:

This course is designed to develop occupational skills. The primary emphasis is on developing independent work habits to increase employability.

Specialized Art (9960MS)

Offered Grades: 7-8

Yearlong: Quarterly

Credit: 1.00 Credit

Prerequisite(s): IEP Team Recommendation Only

Modality: Traditional

Course Description:

This course is designed to promote an appreciation for art. The primary emphasis of this course is on developing skills for leisure time activities and promoting a life-long enjoyment of the arts.

Specialized Music (9962MS)

Offered Grades: 7-8

Yearlong: Quarterly

Credit: 1.00 Credit

Prerequisite(s): IEP Team Recommendation Only

Modality: Traditional

Course Description:

This course is designed to promote an appreciation for music. The primary emphasis of this course is on developing skills for leisure time activities and promoting life-long enjoyment of the arts.

Specialized Physical Education (9995MS)

Offered Grades: 7-8

Yearlong: Quarterly

Credit: 1.00 Credit

Prerequisite(s): IEP Team Recommendation Only

Modality: Traditional

Course Description:

This course is designed to promote health and fitness habits through physical activity. The primary emphasis of this course is on developing skills for leisure time activities and promoting life-long healthy habits.

Specialized Tech Ed (9585MS)

Offered Grades: 7-8

Yearlong: Quarterly

Credit: 1.00 Credit

Prerequisite(s): IEP Team Recommendation Only

Modality: Traditional

Course Description:

This course is designed to promote hands-on, problem-solving skills through the use of several current technologies. The primary emphasis of this course is on developing skills for leisure time activities and promoting life-long healthy habits.