

SUMMER LEARNING INSTITUTE

KINDERGARTEN INFORMATION

DATES

May 28: Drop In Day

Week 1: May 29-31 (W-F)

Week 2: June 3-6 (M-Th)

Week 3: June 10-13 (M-Th)

Week 4: June 17-18 & 20-21
(M-T & Th-F)

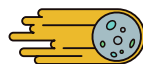
Week 5: June 24-27 (M-Th)

The **Summer Learning Institute (SLI)** is an enrichment program offered each summer for elementary (incoming kindergartners welcome!) & middle schoolers enrolled in LSR7.

At Kindergarten Kickoff on **Thursday, March 7**, you will learn how to create a parent portal through PowerSchool and enroll your child in kindergarten for the 2024-25 school year.

Enrollment for SLI occurs on the same parent platform and is open districtwide from **Wednesday, April 10** to **Wednesday, April 24**. A course catalog is posted at lsr7.org/sli starting on **Thursday, March 28**.

1. Go through PowerSchool to the Parent Portal
2. Click on SLI (Menu, left side)
3. Enroll your child



Enroll **ALL** of your children at the same SLI school.



Enroll **ALL** of your children at the same time - they must be in PowerSchool before you can enroll them in SLI!

K-5 SLI SITES

- Cedar Creek Elementary, 8:30 a.m. - 2:30 p.m.

Feeders: Cedar Creek, Longview Farm, Pleasant Lea Elementary

- Hawthorn Hill Elementary, 8:30 a.m. - 2:30 p.m.

Feeders: Hawthorn Hill, Summit Pointe, Trailridge

- Highland Park Elementary, 7:15 a.m. - 1:15 p.m.

Feeders: Highland Park, Prairie View, Mason

- Meadow Lane Elementary, 8 a.m. - 2 p.m.

Feeders: Meadow Lane, Lee's Summit Elementary, Westview

- Richardson Elementary, 8:30 a.m. - 2:30 p.m.

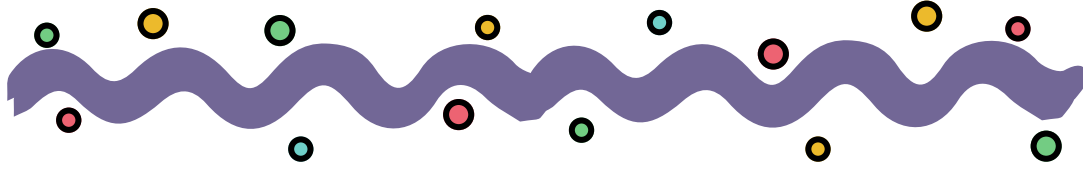
Feeders: Richardson, Underwood, Hazel Grove

- Sunset Valley Elementary, 7:45 a.m. - 1:45 p.m.

Feeders: Sunset Valley, Greenwood, Woodland

Students may enroll at any SLI site, regardless of home school, if transportation is provided. To access shuttle service, please enroll at the site connected to your feeder school.

Y-CLUB SUMMER PROGRAMS



Y-CLUB SUMMER CAMP - BEFORE/AFTER SCHOOL CARE

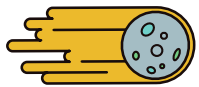
May 28* - June 28 at all SLI sites

(*pending last day of school, closed June 19)

Before School: 6:30 a.m. to SLI start

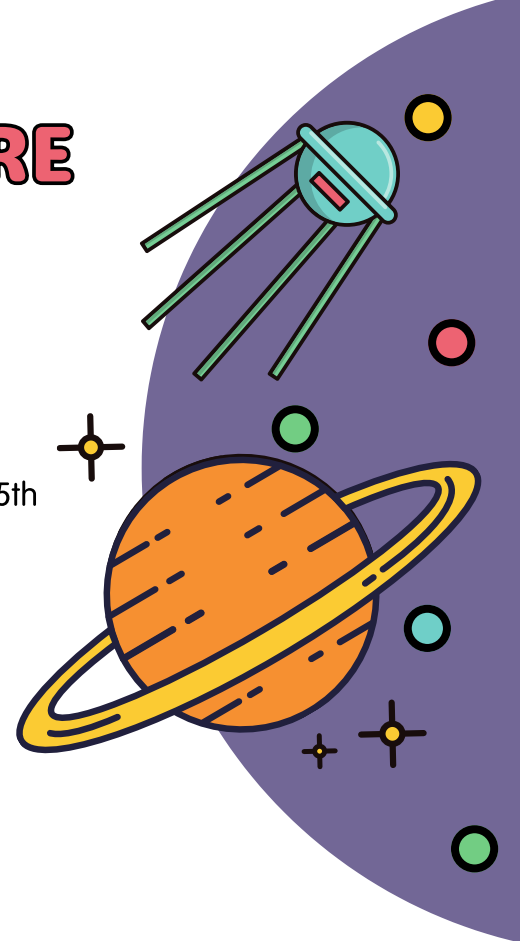
After School: SLI dismissal to 6 p.m.

- Your child must be 5 years old by **May 28** and no older than going into 5th grade to participate.
- Enrollment opened districtwide **Tuesday, February 27**. Incoming kindergarten families: please enroll promptly!
- YMCA weekly deposit is non-refundable and non-transferable.



Make sure your children are enrolled at the same SLI site and YMCA Day Camp site.

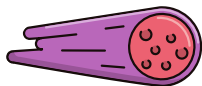
Ex. You have three children enrolled in the YMCA Before and After School program at Richardson Elementary. You will now enroll them at Richardson Elementary for Summer Learning.



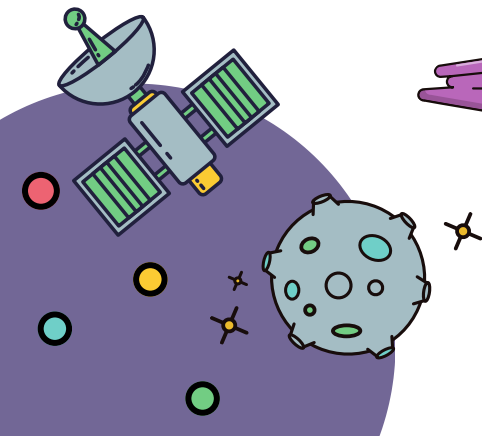
Y-CLUB SUMMER DAY CAMP

July 1 - August 9 (closed July 4 and August 12-20)

6:30 a.m. - 6 p.m. at Cedar Creek, Hawthorn Hill, Highland Park, Richardson and Sunset Valley



Meadow Lane will close after June 28. Be sure to choose a different site for the rest of summer break.



YMCA Contact: 816.360.3390 | yclubsupport@kansascityymca.org
<https://kansascityymca.org/programs/summer-camps>