



WAUNAKEE COMMUNITY SCHOOL DISTRICT DESIGN AND CONSTRUCTION UPDATE

WORKING TOGETHER for a STRONG FUTURE



Vol. 09 | MARCH 2024

HERITAGE ELEMENTARY CONSTRUCTION

With another month of great weather, we have made large strides to the exterior of the building. February marked the completion of the roof. Another key component to the exterior of the building is the metal panels, which began in February. With the metal panel system being extremely intricate, this work has required multiple contractors to work side by side to help with the installation.

The kindergarten and early childhood areas now have casework installed. The casework that was installed includes the cabinets that are in the classrooms and the cubbies that can be found in the hallway. Another finishing touch that has been completed are the ceramic tile walls and floors in the bathrooms. Ceiling hung lights have also been installed now that we have permanent power being run into the area.

The 1st grade and 2nd grade areas are being painted and the ceiling grid is being hung. Up on the second floor, our subcontractors are finishing up on their rough-ins. This allows for the drywallers to follow behind to install and finish the drywall.

DID YOU KNOW?

There is almost 100,000 square feet of flooring that will be installed.

UPCOMING EVENTS



April 22 - Community Last Look Open House



May 29 - Neighborhood Town Hall Meeting



Fall 2024 - Heritage Elementary Opens



Electricity to the whole campus

For questions about the facilities design/construction process:

 www.waunakee.k12.wi.us/community/fall-2022-referendum

 wcsd_fall2022@waunakee.k12.wi.us

 608.849.2000 - ext. 8491



VOGEL
BROS. BUILDING CO.



WAUNAKEE COMMUNITY SCHOOL DISTRICT DESIGN AND CONSTRUCTION UPDATE



Construction II Students Tour



Construction II Students Tour



Board of Education Tour



JOIN US FOR A **NEIGHBORHOOD TOWN HALL**

COME AND LEARN ABOUT THE SCHOOL DISTRICT'S
CONSTRUCTION PROJECTS IN THE NEIGHBORHOOD
ALONG SOUTH STREET.



Wednesday | May 29, 2024
6:00pm - 7:00pm

HERITAGE ELEMENTARY SCHOOL
LARGE GROUP AREA (LGA) | DOOR #4
501 South Street, Waunakee, WI 53597

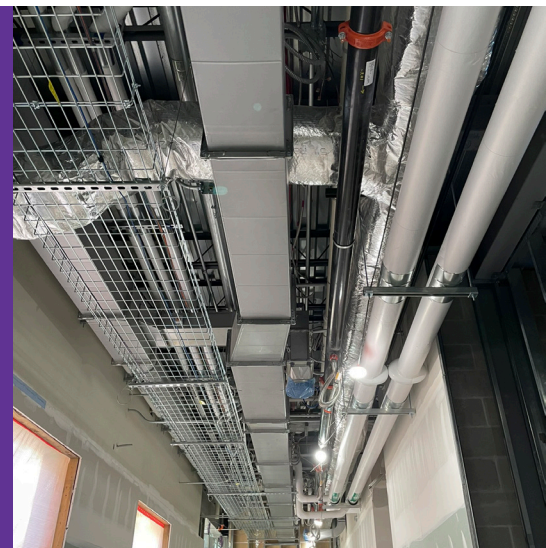
The Waunakee Community School District continues to work with our referendum partners to design and construct the facilities approved by the voters on November 8, 2022. Projects include a new Heritage Elementary School (opening Fall 2024) and Waunakee Community Middle School (opening Fall 2026).

LOCAL PARTNER SPOTLIGHT


North American Mechanical, Inc. (NAMI) stands as a leading full-service mechanical contractor in Wisconsin, delivering exceptional HVAC, plumbing, building automation, and maintenance solutions. Deeply involved in the Waunakee Community for over two decades, NAMI has built a reputation founded on honesty and integrity, establishing themselves as the go-to experts for the Wisconsin Community School District (WCSD).

Since 2001, NAMI has been instrumental in bringing (10) significant projects to life through collaboratively crafted Design-Build and Design-Assist frameworks. Throughout that time, NAMI's dedicated Service Department has consistently provided the WCSD with unparalleled support.

The construction of Heritage Elementary School and the new Middle School is a testament to NAMI's commitment to sustainability, featuring state-of-the-art geothermal systems that exemplify their dedication to eco-friendly and energy-efficient practices. With NAMI, the WCSD can be assured of forward-thinking solutions that meet today's needs and tomorrow's challenges.



For questions about the facilities design/construction process:

 www.waunakee.k12.wi.us/community/fall-2022-referendum

 wcsd_fall2022@waunakee.k12.wi.us

 608.849.2000 - ext. 8491



VOGEL
BROS. BUILDING CO.