



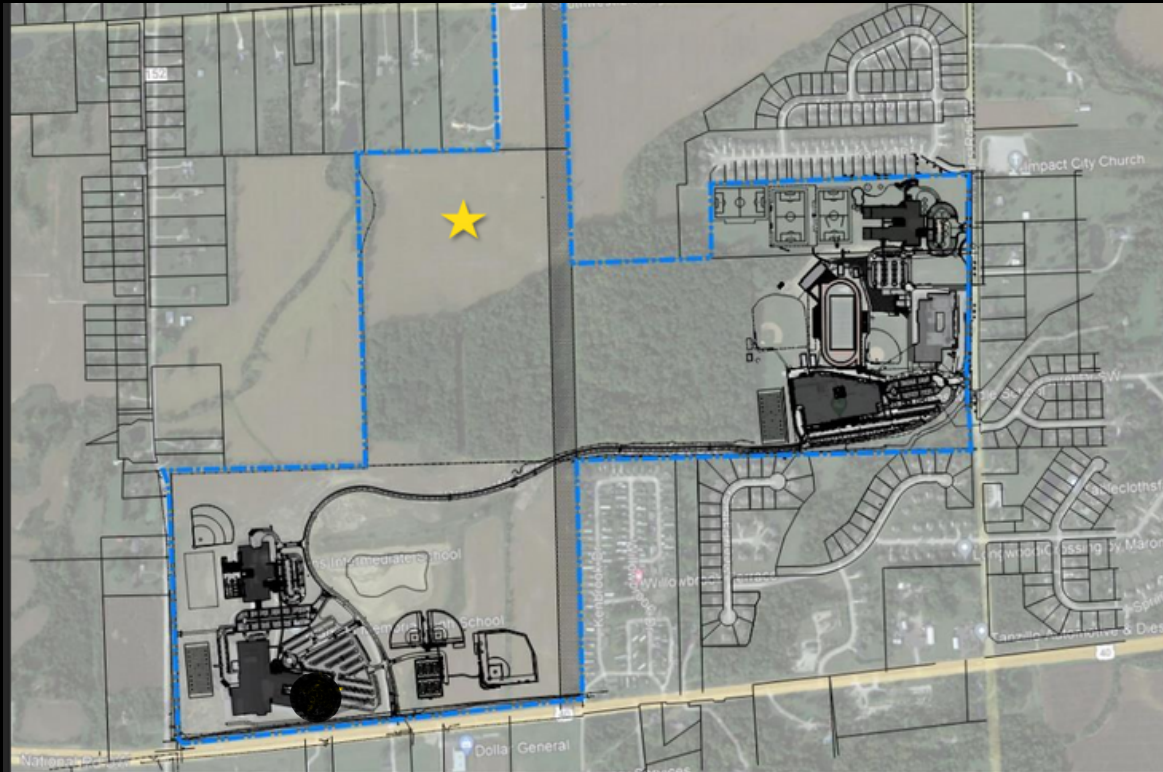
SUPERINTENDENT DR. KASEY PERKINS

COMMUNITY COMPASS

The District's Future Direction

DID YOU KNOW?

This is an overall aerial site plan of the Refugee Rd/Watkins/Rt. 40 property owned by the school District. The existing campus has ample space for further development, strategically identified by the star. Its design thoughtfully integrates academic facilities and athletic complexes, with careful consideration given to accommodating future expansions.



PATASKALA SOUTH FORK



THE NEW ELEMENTARY BUILDING WILL HAVE 44 CLASSROOMS INCLUDING 24 TYPICAL CLASSROOMS, SIX SMALL GROUP ROOMS, 10 CLASSROOMS WITH RESTROOMS AND FOUR SPECIALTY ROOMS WHICH INCLUDE ART, MUSIC, GYM AND A LAB ROOM. THE BUILDING IS APPROXIMATELY 78,650 SQUARE FT WHICH MAKES IT 20-25,000 SQUARE FEET LARGER THAN OUR OTHER ELEMENTARIES. EACH ACADEMIC WING IS OVER 280 FEET LONG AND THERE HAS BEEN OVER 6000 YARDS OF CONCRETE POURED TO MAKE UP THE CLASSROOM FLOORS. THIS BUILDING WILL QUALIFY FOR A LEED SILVER RATING WHICH PROVIDES A FRAMEWORK FOR HEALTHY, HIGHLY EFFICIENT, AND COST-SAVING GREEN BUILDINGS.

SCENIC VIEW ESTATES

NEW DEVELOPMENT WITH FIVE ACCESS
POINTS BETWEEN RT 310/BROAD
STREET/BEECHWOOD TRAILS
60 HOMES WITH 1-5 ACRE LOTS

