



POCATELLO/CHUBBUCK SCHOOL DISTRICT 25
LEARNING TODAY FOR THE POSSIBILITIES OF TOMORROW

**Administration Offices
3115 Pole Line Road
Pocatello, Idaho 83201**

Addendum No. 1

March 12, 2024

RE: 2024 HVAC – Central Plant Equipment, Heat Pump, and Outdoor Air Units Replacement at Jefferson Elementary

FROM: Business Services
(208) 235-3270

This Addendum becomes a part of the Contract Documents and modifies the original Bidding Specifications, as noted below. This addendum consists of one (1) page plus attachments. Total three (3) pages. Acknowledge Addendum on the Bid Proposal. **Failure to acknowledge Addendum(s) on the bid sheet may subject the bidder to disqualification.**

M1.1 ENLARGED DEMOLITION FLOOR PLANS

1. Piping schematic and enlarged floor plan updated to match updated new scope.

M2.1 ENLARGED MECHANICAL FLOOR PLANS

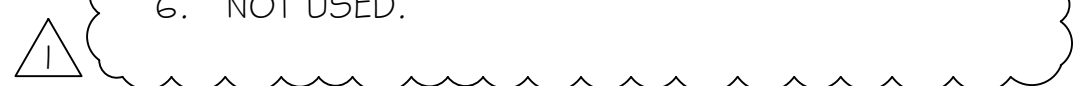
1. Original schematic and floor plan updated to show correct hydraulic separator connections.

NO OTHER CHANGES

END OF ADDENDUM No.1 – March 12, 2024, js

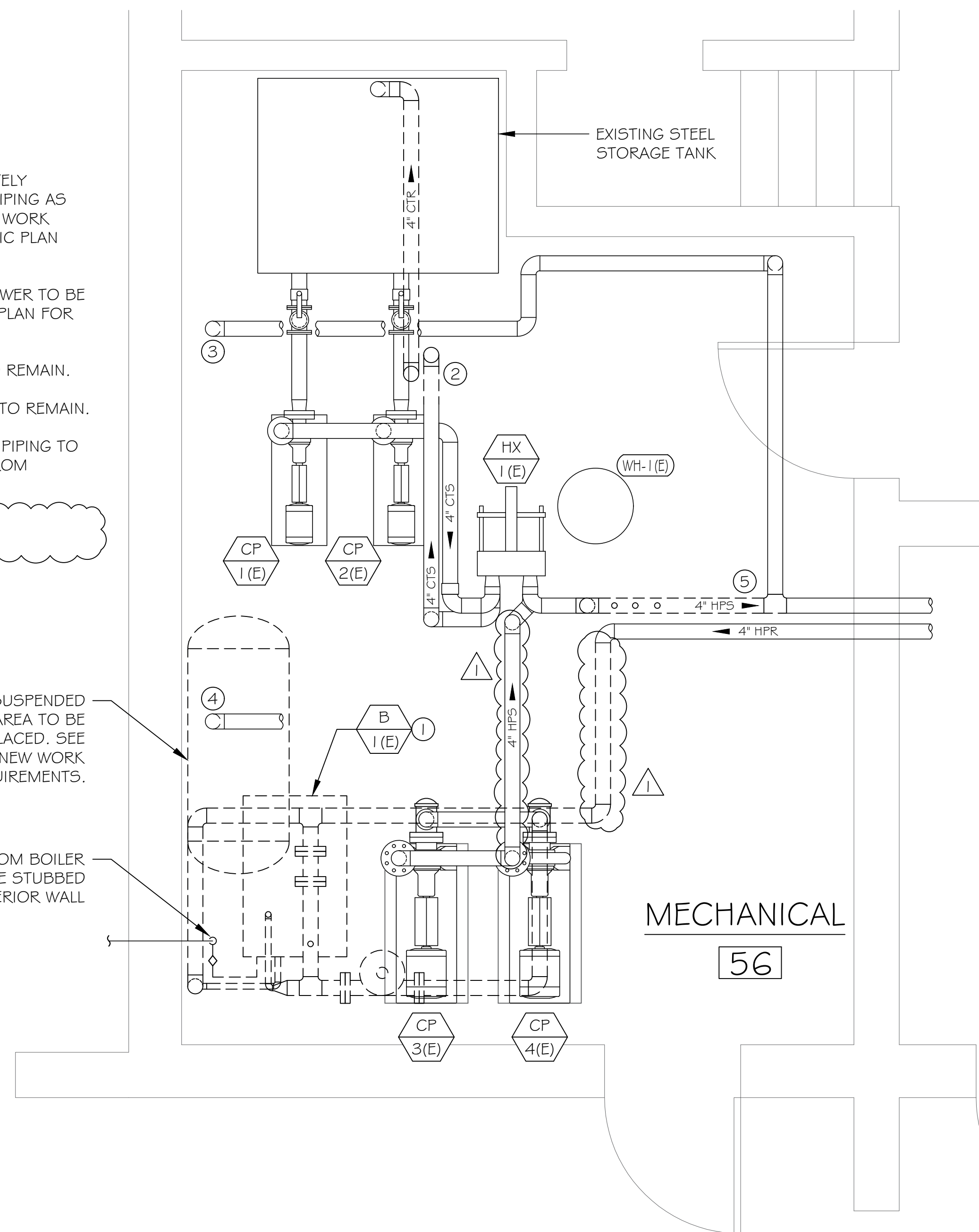
KEY NOTES:

- EXISTING EQUIPMENT TO BE COMPLETELY REMOVED AND REPLACED. REMOVE PIPING AS NECESSARY TO ACCOMMODATE NEW WORK SCOPE. SEE BOILER ROOM SCHEMATIC PLAN AND NEW SCOPE FOR DETAILS.
- 4" PIPING TO AND FROM COOLING TOWER TO BE REMOVED. SEE BOILER ROOM ROOF PLAN FOR CONTINUATION.
- EXISTING 4" FIRE SPRINKLER RISER TO REMAIN.
- EXISTING 3" DOMESTIC WATER RISER TO REMAIN.
- EXISTING 4" HEAT PUMP SUPPLY(HPS) PIPING TO BE DISCONNECTED AND REMOVED FROM SHARED FIRE SPRINKLER LINE.
- NOT USED.



EXPANSION TANK SUSPENDED FROM CEILING THIS AREA TO BE REMOVED AND REPLACED. SEE SCHEMATIC AND NEW WORK PLAN FOR REQUIREMENTS.

REMOVE NG LINE FROM BOILER BACK TO 2" PIPE STUBBED THROUGH EXTERIOR WALL

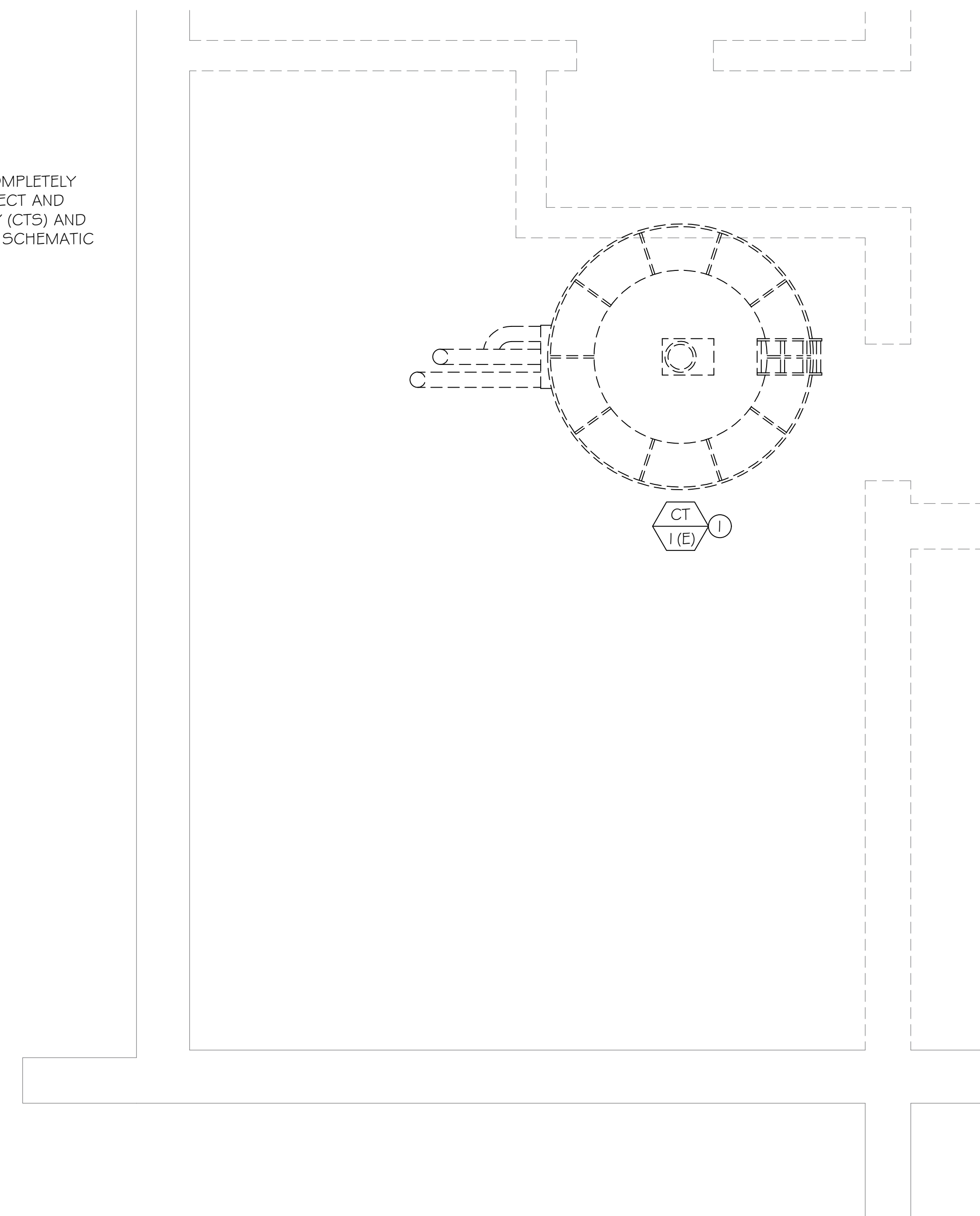


BOILER ROOM FLOOR PLAN-DEMO

SCALE- 1/2" = 1'-0"

KEY NOTES:

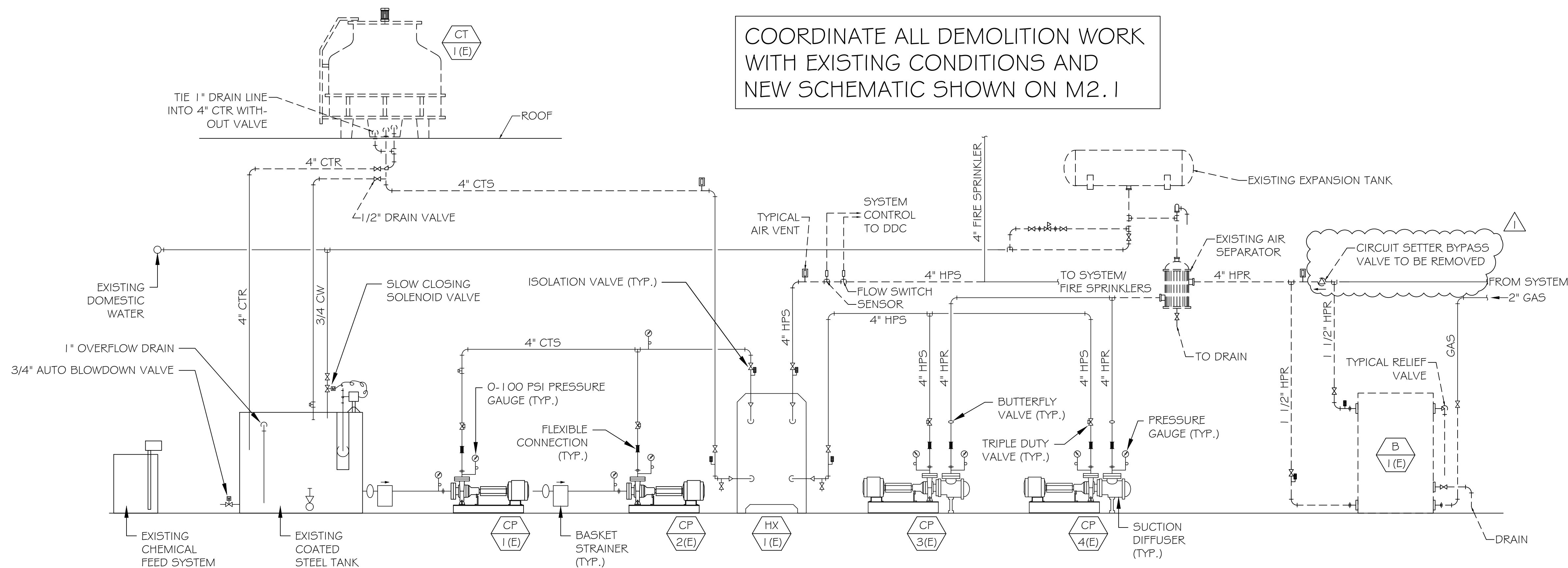
- EXISTING COOLING TOWER TO BE COMPLETELY REMOVED AND REPLACED. DISCONNECT AND REMOVE 4" COOLING TOWER SUPPLY (CTS) AND RETURN (CTR) PIPING AS SHOWN ON SCHEMATIC AND FLOOR PLAN.



BOILER ROOM ROOF PLAN-DEMO

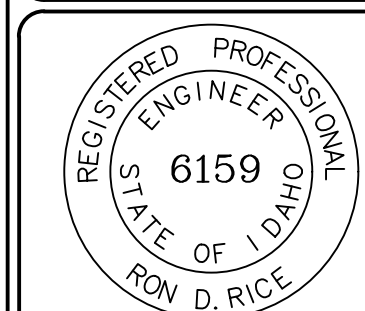
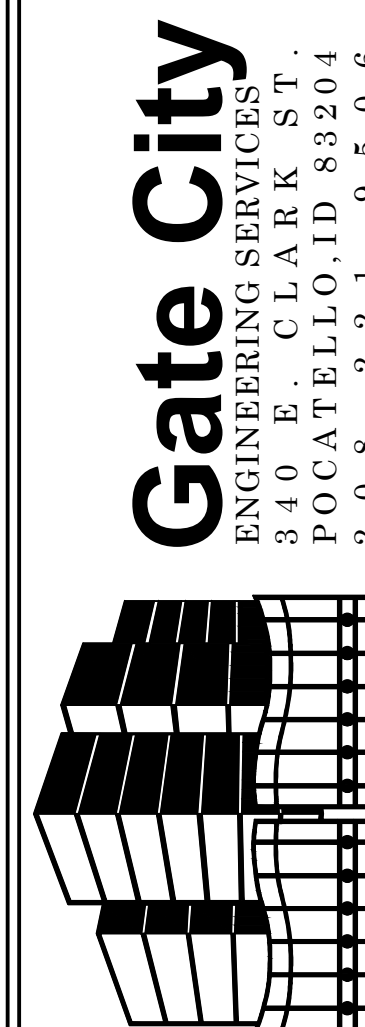
SCALE- 1/2" = 1'-0"

COORDINATE ALL DEMOLITION WORK WITH EXISTING CONDITIONS AND NEW SCHEMATIC SHOWN ON M2.1



BOILER ROOM SCHEMATIC-DEMOLITION

NOT TO SCALE



ORIGINAL DRAWING SIGNED BY: RON D. RICE
DATE ORIGINAL SIGNED: 2/26/2024
ORIGINAL ON FILE AT:
340 E CLARK ST, POCATELLO, IDAHO 83204

2024 JEFFERSON ELEMENTARY SCHOOL CENTRAL PLANT
EQUIPMENT, HEAT PUMP, & OUTDOOR AIR UNIT REPLACEMENT
Pocatello/Chubbuck School District
1455 Gwen Drive
Pocatello, Idaho 83204

REV	DATE	DESCRIPTION
1	3/12	Addendum #1

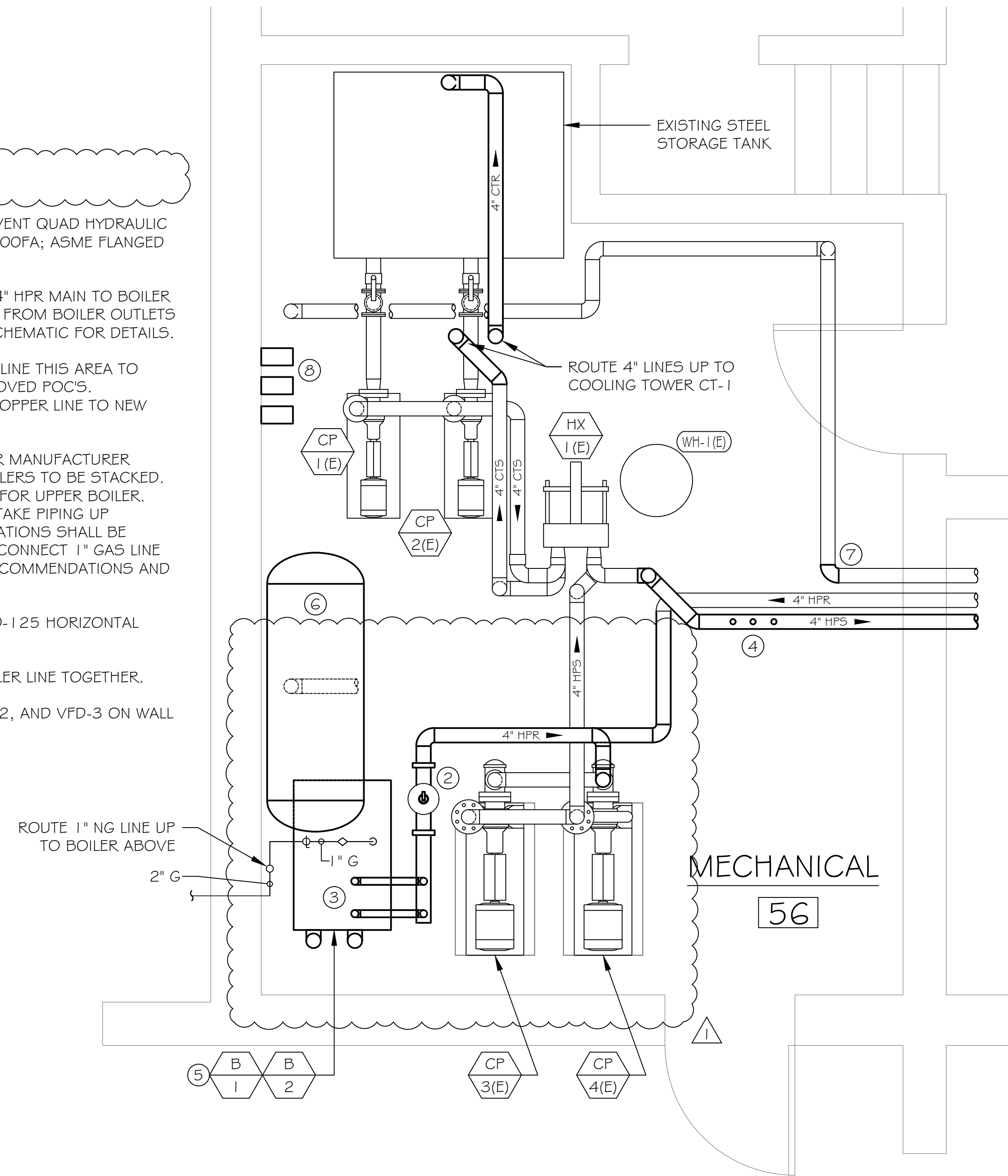
PROJECT No.: 2378
DATE: 2/26/2024
SCALE: As Shown
ENGINEER: TRENT HALL
DWG. BY: TRENT HALL

ENLARGED
DEMOLITION
FLOOR PLANS
M.I.I

SHEET: 3

KEY NOTES:

1. NOT USED.
2. NEW SPIROTERM SPIROVENT QUAD HYDRAULIC SEPARATOR MODEL VVN400FA; ASME FLANGED AND REMOVABLE HEAD.
3. ROUTE (2) 2" HPR FROM 4" HPR MAIN TO BOILER INLETS, ROUTE (2) 2" HPR FROM BOILER OUTLETS TO 4" HPR. SEE PIPING SCHEMATIC FOR DETAILS.
4. NEW 1" POC'S ON 4" HPS LINE THIS AREA TO MATCH PREVIOUSLY REMOVED POC'S. RE-CONNECT REMOVED COPPER LINE TO NEW POC.
5. INSTALL NEW BOILERS PER MANUFACTURER RECOMMENDATIONS. BOILERS TO BE STACKED. PROVIDE SUPPORT RACK FOR UPPER BOILER. ROUTE 4" FLUE AND 4" INTAKE PIPING UP THROUGH ROOF. PENETRATIONS SHALL BE SEALED WEATHER TIGHT. CONNECT 1" GAS LINE PER MANUFACTURER'S RECOMMENDATIONS AND DETAIL, SHEET M4.0.
6. NEW TACO MODEL CA450-125 HORIZONTAL EXPANSION TANK.
7. CONNECT 4" FIRE SPRINKLER LINE TOGETHER.
8. MOUNT NEW VFD-1, VFD-2, AND VFD-3 ON WALL THIS AREA.

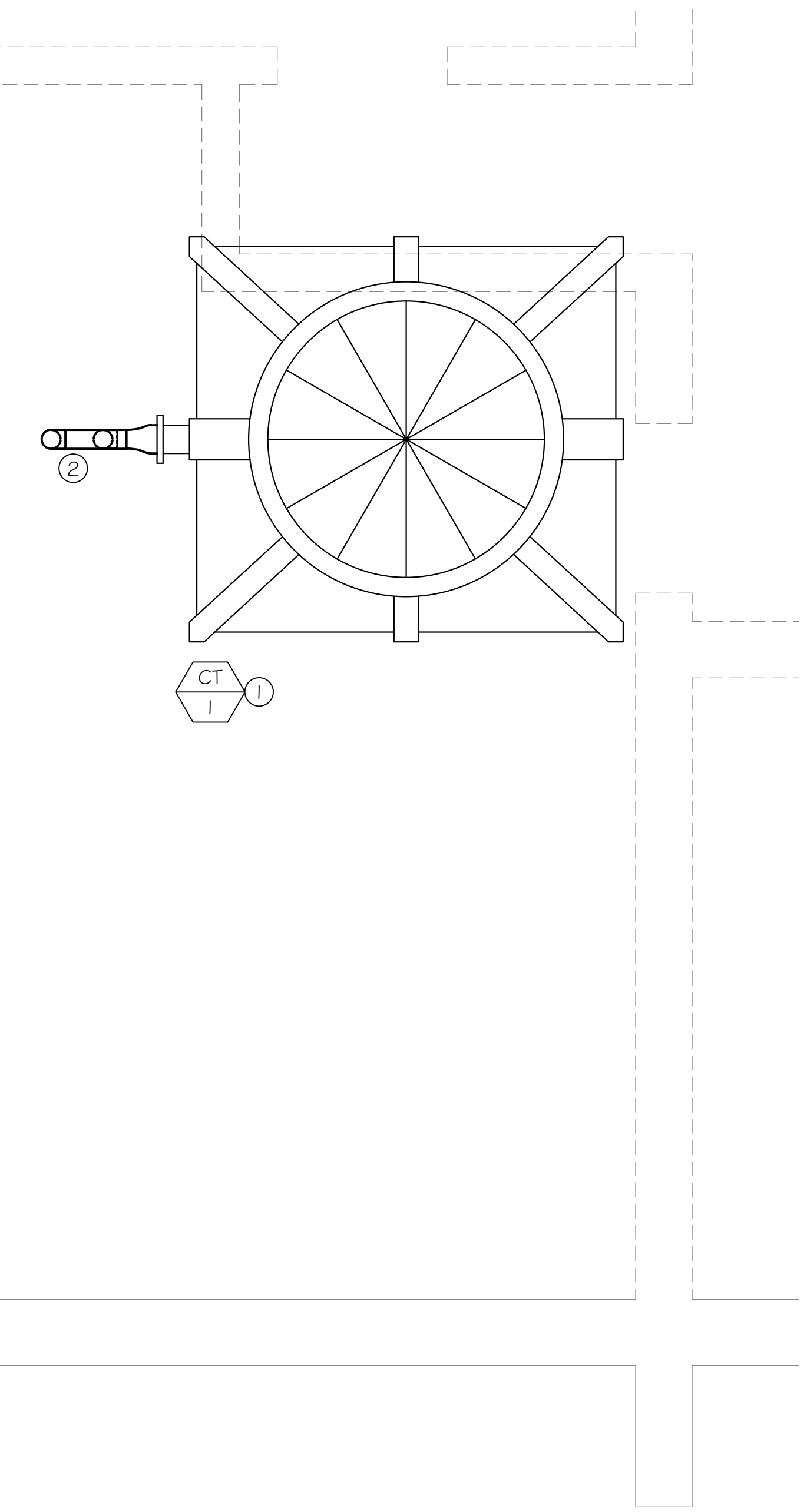


BOILER ROOM FLOOR PLAN-NEW

SCALE- 1/2" = 1'-0"

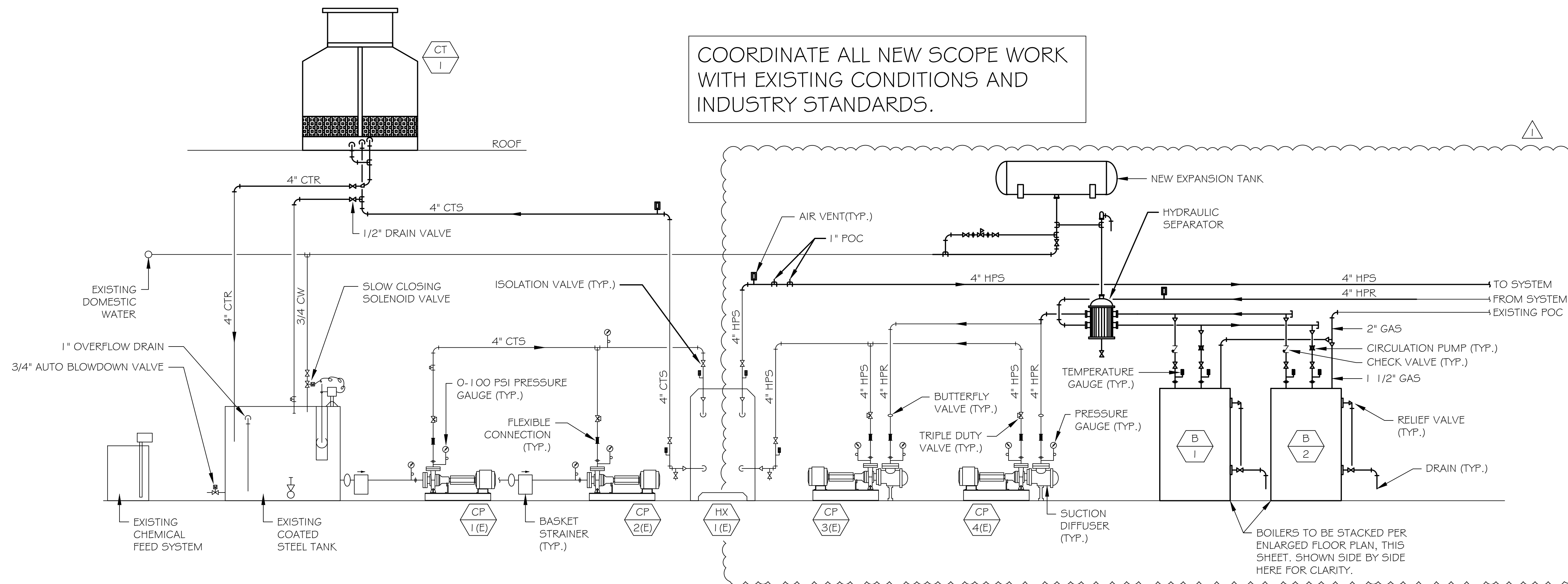
KEY NOTES:

1. NEW COOLING TOWER TO BE INSTALLED IN SAME LOCATION AS PREVIOUSLY REMOVED COOLING TOWER. CONNECT ALL UTILITIES PER MANUFACTURER'S RECOMMENDATIONS AND PIPING SCHEMATIC. INSTALL STRUCTURAL SUPPORT AS NEEDED PER GUIDANCE OF STRUCTURAL ENGINEER AND MANUFACTURER. ALL ROOF PENETRATIONS SHALL BE SEALED WEATHER TIGHT.
2. ROUTE 4" CTS AND CTR PIPING DOWN THROUGH ROOF. SEE ENLARGED BOILER ROOM PLAN FOR CONTINUATION.



BOILER ROOM ROOF PLAN-NEW

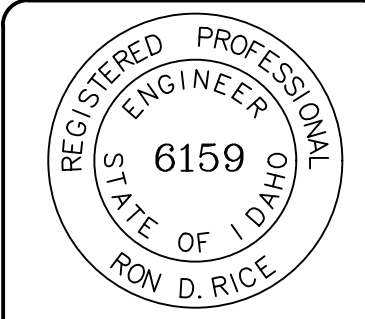
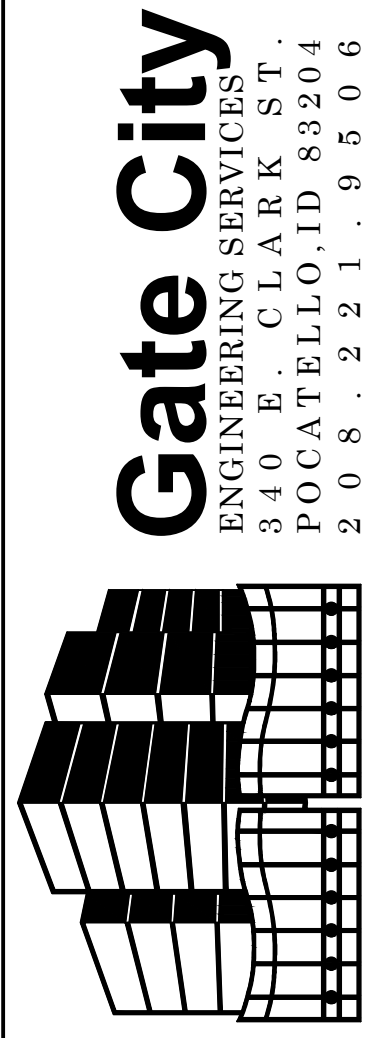
SCALE- 1/2" = 1'-0"



BOILER ROOM SCHEMATIC-NEW SCOPE

NOT TO SCALE

COORDINATE ALL NEW SCOPE WORK WITH EXISTING CONDITIONS AND INDUSTRY STANDARDS.



ORIGINAL DRAWING SIGNED BY: RON D. RICE
DATE ORIGINAL SIGNED: 2/26/2024
ORIGINAL ON FILE AT:
340 E CLARK ST, POCATELLO, IDAHO 83204

2024 JEFFERSON ELEMENTARY SCHOOL CENTRAL PLANT EQUIPMENT, HEAT PUMP, & OUTDOOR AIR UNIT REPLACEMENT
Pocatello/Chubbuck School District
1455 Gwen Drive
Pocatello, Idaho 83204

REV	DATE	DESCRIPTION
1	3/12	Addendum #1

PROJECT No.: 2378
DATE: 2/26/2024
SCALE: As Shown
ENGINEER: TRENT HALL
DWG. BY: TRENT HALL

ENLARGED MECHANICAL FLOOR PLANS
M2.1

SHEET: 5