

Nokomis Montessori North School

985 Ruth Street

Project Summary:

Our school is based on the Montessori method: students learn at their own pace in multi-grade classrooms, independently cultivating their interests and natural abilities. Teachers help students choose their work in carefully prepared, peaceful environments; students use beautifully designed hands-on materials to practice and understand skills and concepts.

It was originally constructed in 1956 at 29,337 square feet. Later additions were completed in 1994. It is now 44,528 square feet.

Issues Identified By School Community In 2015

1. Upgrade Sprinkler System
2. Add Marquee Signage
3. Update Technology Space/Media Space
4. Upgrade assembly/Gathering Space
5. Add More Parking
6. Upgrade Bathrooms
7. Upgrade Server Room
8. Improved Playground Drainage
9. Overhaul Science Room
10. Portable Risers for K-5 Music (both North and South)



Grade Levels:	PK-5
SY 2014/15 Enrollment:	319
Design Enrollment:	430

General Notes:

Existing utilization shown is for School Year 2014-2015

The Conceptual Utilization Plans are exploratory rather than actual construction plans and represent the design at one moment in time, which will change as the design and funding process progresses.

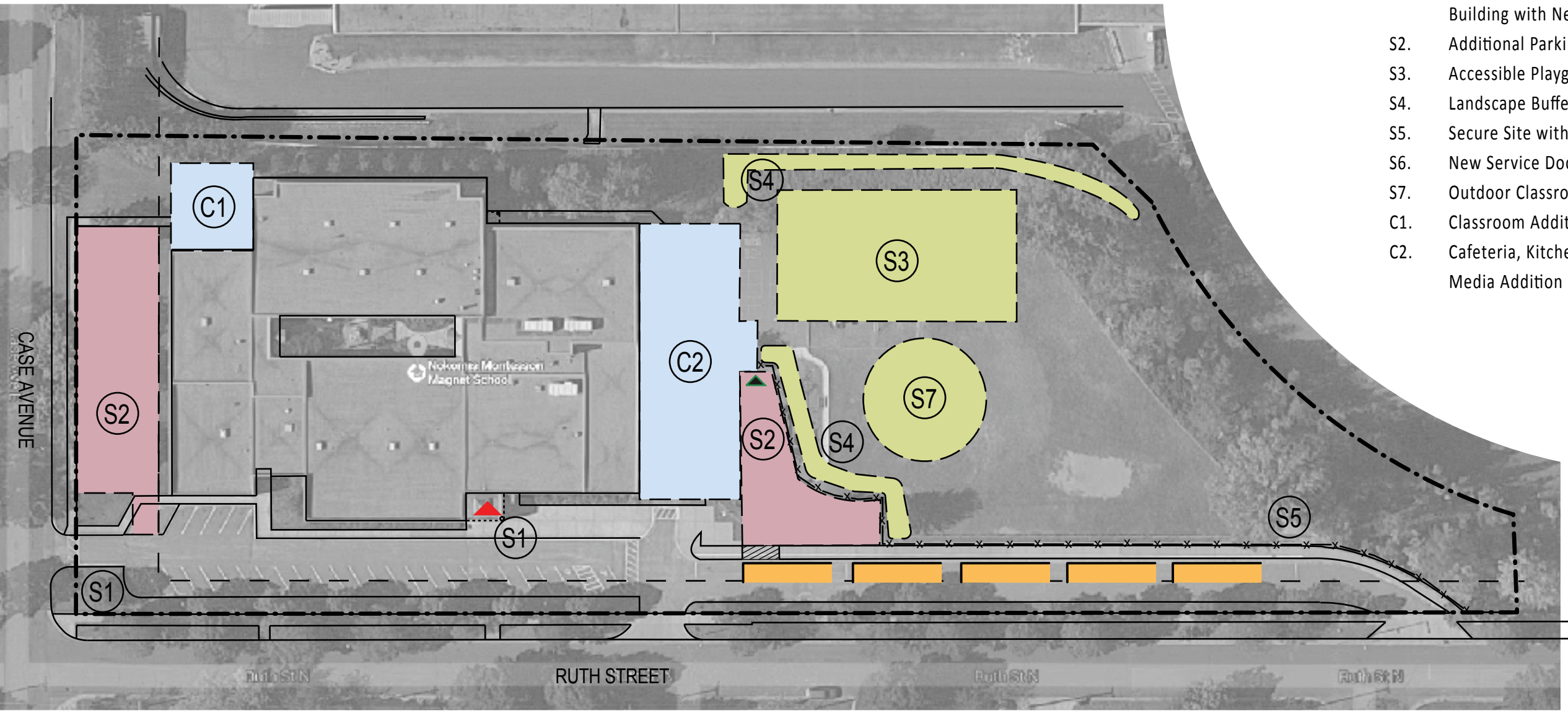
The Conceptual Plans are included as a way to organize scopes of work into logical, efficient and meaningful projects. There is no prioritization implied in a work scope title (e.g. "Work Scope A" is not necessarily the most critical work to be done).

The plans in this document are not comprehensive of the entire building's needs as maintenance and replacement of existing building systems such as roofs and mechanical systems are omitted to maintain graphic clarity of the overall vision generated during the Facilities Master Plan Process.

Formal zoning reviews have not been undertaken for the proposed work shown in these plans. A review with zoning and building code authorities will occur once the funding is secured.

Nokomis Montessori North School

Site Concept

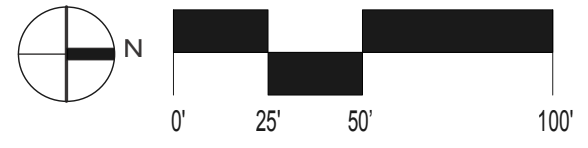


Legend:

S1.	Welcoming & Clear Wayfind Building with New Marquee Sign	
S2.	Additional Parking	6,450 SF
S3.	Accessible Playground	5,675 SF
S4.	Landscape Buffer	2,200 SF
S5.	Secure Site with 6' Fencing	
S6.	New Service Dock	
S7.	Outdoor Classroom	2,000 SF
C1.	Classroom Addition	1,300 SF
C2.	Cafeteria, Kitchen, and Media Addition	5,175 SF

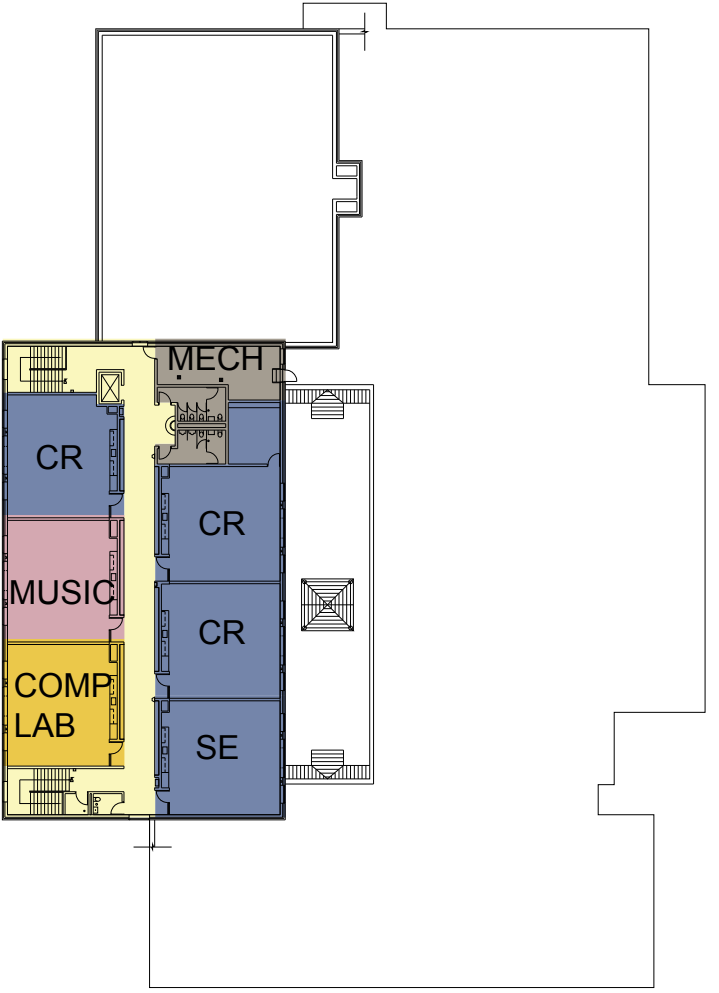
- Property Line
- Main Entry
- Secondary Entry
- Service Entry

- New Landscape and Playground
- Parking and Hardscape
- New Building Construction



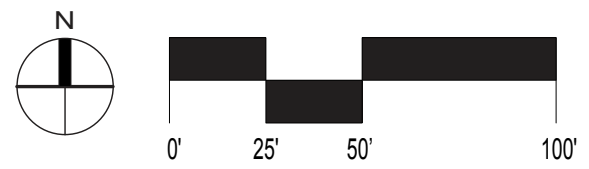
Nokomis Montessori North School

Existing Utilization



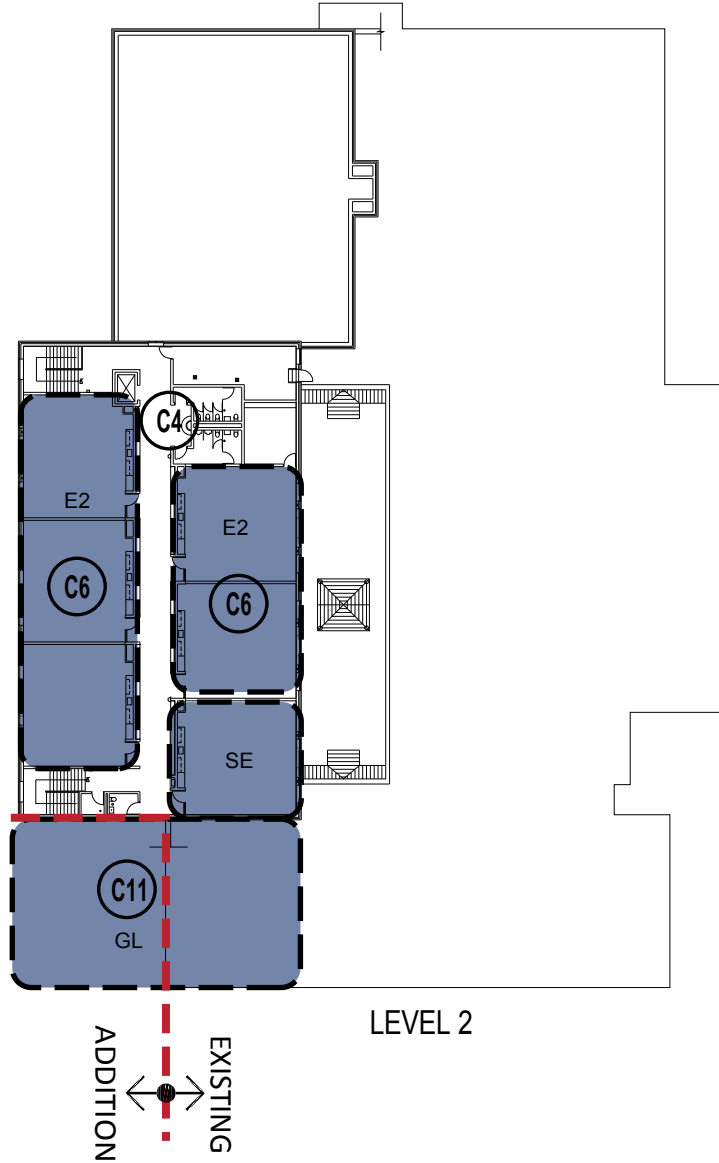
- General Learning
- Science
- Performing Arts
- Career & Tech Education
- Media Center
- Dining
- Athletics
- Circulation
- Facilities Support
- Administration
- Art

- Main Entry
- Secondary Entry
- Service Entry



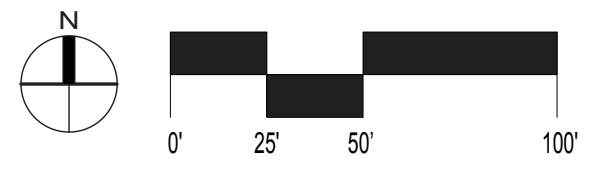
Nokomis Montessori North School

Conceptual Utilization Plan



- Legend:**
- C1. New Expanded Media/Technology Space
 - C2. School Assembly/Cafeteria
 - C3. Relocate Kitchen for Improved Service and Space
 - C4. Upgrade Bathrooms
 - C5. Science Room Improvements
 - C6. Create Flexible Collaborative Interior Environments with Flexible Furnishings
 - C7. Create Specialized Learning Area with Sensory Room
 - C8. Add Fire Sprinkler System to Building
 - C9. Reconfigure and Expand Administrative Resource Space
 - C10. Appropriate Early Learning Expansion with Restrooms
 - C11. Collaborative Learning Space

- General Learning
 - Science
 - Performing Arts
 - Career & Tech Education
 - Media Center
 - Dining
 - Athletics
 - Circulation
 - Facilities Support
 - Administration
 - Art
- New/Existing
 - Property Line
 - Main Entry
 - Secondary Entry
 - Service Entry



Nokomis Montessori North School

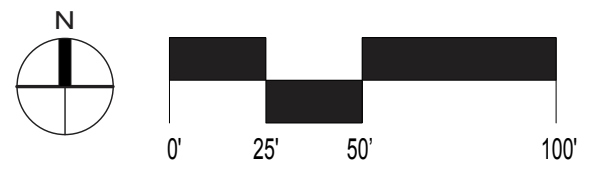
Conceptual Construction Plan



Scope Package	New Construction	Heavy Remodel	Medium Remodel	Light Remodel	Finishes Only
A	7,625 SF	5,350 SF			
B	2,475 SF	5,900 SF			
C		800 SF	1,475 SF		
D				17,225 SF	
E					
TOTAL	10,100 SF	12,450 SF	1,475 SF	25,325 SF	

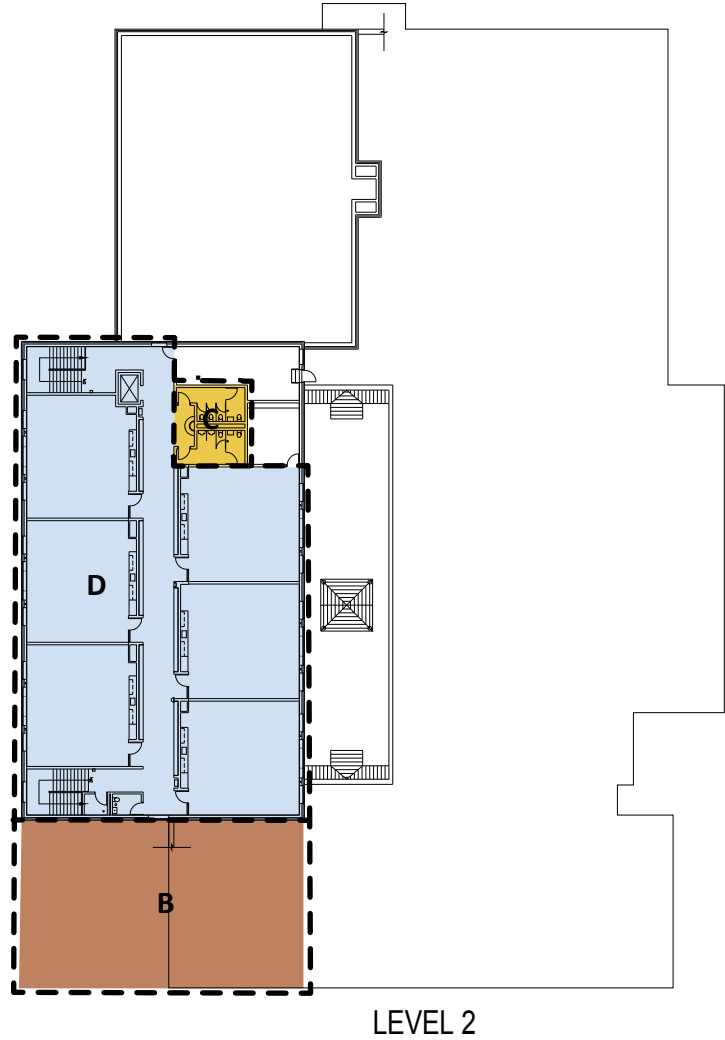
Line Items	New Construction	Heavy Remodel	Medium Remodel	Light Remodel	Finishes Only

-  Demolition/Removal
-  New/Existing
-  New Construction
-  Heavy Remodel
-  Medium Remodel
-  Light Remodel
-  Finishes Only
-  No Work



Nokomis Montessori North School

Conceptual Construction Plan



Scope Package	New Construction	Heavy Remodel	Medium Remodel	Light Remodel	Finishes Only
A					
B	3,250 SF				
C			400 SF		
D				8,100 SF	
E					
TOTAL	3,250 SF		400 SF	8,100 SF	

Line Items	New Construction	Heavy Remodel	Medium Remodel	Light Remodel	Finishes Only

-  Demolition/Removal
-  New/Existing
-  New Construction
-  Heavy Remodel
-  Medium Remodel
-  Light Remodel
-  Finishes Only
-  No Work

