



# INTRODUCTION TO FRESHMAN YEAR AT LAUREL HIGH SCHOOL



School Year

2024 / 2025

Class of 2028

# People to Know

**Matt Torix - Superintendent**

**Stacy Hall – Principal**

**John Stilson – Assistant Principal**

**Andrew Torgerson – Director of Activities**

**Brandi Fox – School Counselor**

**Kasey Felder– High School Secretary**

**Rachel Gappa – High School Secretary**

**Marita Grammar – High School Secretary**

**Lisa Harris – District Secretary and Registrar**

**Officer Haley Swan – Student Resource Officer**

# **Laurel High School Counselors**

**Mr. Brent Edgmond**

**Students with last names A – L**

**[brent\\_edgmond@laurel.k12.mt.us](mailto:brent_edgmond@laurel.k12.mt.us)**

**(Will Retire at end of this Year)**

**Mrs. Brandi Fox**

**Students with last names M – Z**

**[brandi\\_fox@laurel.k12.mt.us](mailto:brandi_fox@laurel.k12.mt.us)**

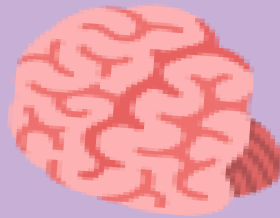


**So....Let's Get  
Started!**

**When you hear the words...  
High School!**



**What are your first thoughts?**



Do I have to go to school?  
What type of Job would I like?  
What's for lunch?  
Will I make friends?  
What if I am a new student?  
How much homework will I have?  
My braces make me look funny.  
Am I really that tall?  
Do I have to go to college?  
Do I use too much eye makeup?  
What if I join the Marines?  
Do I have to go to "Summer School"?  
Why are all of the locker's **ORANGE** on the inside?  
I'm going to be a professional baseball player.



# LHS Link Crew



# Graduation Requirements

4 Credits of English

3 Credits of Math

2 Credits of Science

3 Credits of Social Studies - World History (grade 10), US History (Grade 11) and Civics (Grade 12)

1 Credit of Fine Art (Art, Band, Vocal Music, or Photography) \*Photo is not a Freshman class\*

1 Credit of Physical Education/Health - a semester of Grade 9 PE/ Health and a semester of Grade 10 PE/ Health (Grade 10 PE/Health is during sophomore year.

1/2 Credit Information Literacy & Technology (ILT) - Grade 9

1/2 Credit Career and Financial Education (CFE) - Grade 10

8 Credits of Electives

23 Total Credits required to Graduate from LHS

\*please note.....a semester class passed earns .5 credit\*

**You must pass your classes to graduate!**

# WHAT CAN I DO AFTER HIGH SCHOOL?

Work ?

Specific Training ?

(May include on-the-job training or apprenticeship)?

Military?

College?

Nothing?

# Apprenticeship AND / OR Training Programs

<https://apprenticeship.mt.gov/>

**\*Beauty, Cosmetic, Massage Therapy**

[https://www.beautyschoolsdirectory.com/schools/  
montana-beauty-institute/billings-mt](https://www.beautyschoolsdirectory.com/schools/montana-beauty-institute/billings-mt)

<https://limahana.co/>

<https://healingartsmt.com>

**\*Truck Driving**

<https://legacyschools.com/truck-driver-training/>

# Continued...

**\*All Types of training – City College – Billings, MT**

<http://www.msubillings.edu/citycollege>

**\*Universal Technical Institute** <https://uti.edu/programs>

**\*Lincoln Welding School**

<https://www.lincolnelectric.com/en/Education/Training-Programs>

**\*WyoTech** <https://www.wyotech.edu>

**\*MT Culinary School**

<https://www.fvcc.edu/program/culinary-arts-and-catering-aas>

**\*OR Culinary Institute** <https://escoffier.edu>

**\*Law Enforcement** <https://dojmt.gov.mlea>



# So....what if you want to go to College?



# Montana University System

<https://mus.edu/>

- \* Earn at least a 2.5 high school GPA;  
OR
- \* Rank in the top half of the school's graduating class;  
OR
- \* Earn an ACT composite of 22 or higher, or SAT total score  
--- of 1120 or higher (exception: MSU-Northern: ACT score of  
20, SAT score of 1050).

**Montana University  
System  
Admission Requirements**

**<http://mus.edu/Prepare>**

# Going to College?

For Students in Montana High Schools, the student must complete the Board of Regents' College Preparatory Program in high school.

Course	<u>Minimum Core</u>	<u>Years</u>	<u>Rigorous Core</u>	<u>Years</u>
Mathematics	Algebra I, II, and Geometry (or the sequential content equivalent).	4	Algebra I, II, and Geometry (or the sequential content equivalent) and a course beyond Algebra II (such as Trigonometry, Pre-Calculus, Calculus, Computer Math, or course equivalent)	4
English	Written and oral communication skills and literature	4	Written and oral communication skills, literature, and a designated college-prep composition or research-writing course	4
Science	2 lab sciences: one year must be earth science, biology, chemistry or physics	2	Full year each: General, physical or earth science; biology; chemistry or physics	3
Social Studies	Global studies (world history, world geography), American history, and government. Economics, American Indian history or other third-year course	3	Global studies (world history, world geography), American history, and government. Economics, American Indian history or other third-year course. Recommend: ½ yr of other courses such as psychology, humanities	3
Electives	World language, computer science, visual and performing arts, or vocational education	2	2 years of a second language, music, fine arts, speech/debate, career and technical education (such as information technology, computer science)	3

# Requirements for Out-of-State Schools

- ▣ Always check the website for the colleges being considered before your sophomore year of high school.
- ▣ Requirements may vary. Common additional course requirements may be 2 years of foreign language, an additional year of science, and an additional year of math.



**Bottom line is that you will need 4 years of English, 4 years of Math, 4 years of Science, and 3 years of Social Studies.**

**If you expect to “take” the next step,  
you must prepare for it.**

**Please Invest in YOUR Education!**

## Public Universities and Colleges in Montana

Bitterroot College [www.umt/bitterroot-college](http://www.umt/bitterroot-college)

City College – Billings <http://msubillings.edu/citycollege>

Dawson Community College [www.dawson.edu](http://www.dawson.edu)

Flathead Valley Community [www.fvcc.edu](http://www.fvcc.edu)

Gallatin College at MSU <http://gallatin.montana.edu>

Great Falls College MSU <http://admissions.gfcmsu.edu>

Helena College UM <http://umhelena.edu>

Miles City Community College <http://milescc.edu>

Missoula College <http://www.mc.umt.edu>

Montana Tech <http://mtech.edu>

MSU Billings <http://msubillings.edu>

MSU Bozeman <http://montana.edu>

MSU Northern <http://msun.edu>

UM Missoula <http://umt.edu>

UM Western <http://umwestern.edu>



## Private Colleges in Montana

Carroll College <http://carroll.edu>

Rocky Mountain College <http://rocky.edu>

University of Providence at Great Falls <https://www.uprovidence.edu>

## Tribal Colleges in Montana

Aaniiih Nakoda College <http://ancollege.edu>

Blackfeet Community College <http://bfcc.edu>

Chief Dull Knife College <http://cdkc.edu>

Fort Peck Community College <http://fpcc.edu>

Little Big Horn College <http://lbhc.edu>

Salish Kootenai College <http://skc.edu>

Stone Child College <http://stonechild.edu>



# Military

US Army <https://www.army.mil>

US Navy <http://www.navy.mil>

US Marines <http://www.marines.mil>

US Air Force <http://www.af.mil>

US Coast Guard <https://www.uscg.mil>

ROTC Scholarships <http://todaysmilitary.com/training/rotc>

Army Reserves <http://goarmy.com/reserve>

Navy Reserves <http://navy.com/reserve>

Air Force Reserves <https://afre.serve.com>

Marines Reserves <http://www.marforres.marines.mil>

Coast Guard Reserves <http://reserve.uscg.mil>

Army National Guard <https://nationalguard.com>

Air Force National Guard <https://goang.com>

Coast Guard National Guard <http://uscg.mil>

Marines National Guard <https://todaysmilitary.com>

# **Job Corp Sites in Montana**

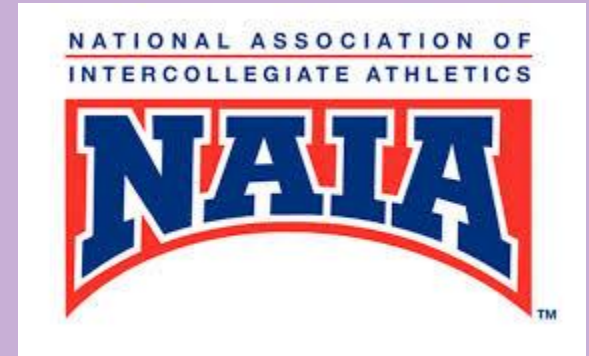
**<https://trappercreek.jobcorps.gov/>** -

**Trapper Creek, Darby, MT**

**<https://anaconda.jobcorps.gov/>** -

**Anaconda, MT**

# College Athletics



# NCAA Freshman Eligibility Standards

Division I and II schools – 16 Core Courses

4 credits of English

3 credits of Math – Algebra I or higher

2 credits of Natural / Physical Sciences

1 additional credit of English, Math, or Science

2 credits Social Science

4 credits of additional courses – NCAA approved  
(Foreign Language)

**Bottom line....it is best to take 4 years of Math, 4 years of Science, 4 years of Social Studies and 4 years of English!**

# NCAA Freshman Eligibility Standards

## Initial Eligibility Information

[http://ncaa.org/Docs/eligibility\\_center/  
Student Resources/CBSA.pdf](http://ncaa.org/Docs/eligibility_center/Student_Resources/CBSA.pdf)

# NAIA and NJCAA

Eligibility for **NAIA** Schools are:

High School Diploma and an 18 on ACT, better than a 2.000 GPA, graduate in top half of your class.

<http://www.naia.org/>

Eligibility for **NJCAA** Schools are:

High School Diploma or Hi-Set and admission requirements of the school.

<http://www.njcaa.org/>



Overall, a little over 7% of high school athletes, (about 1 in 13) go on to play a varsity sport in college and less than 2% of High School Athletes (1 in 57) go on to play at NCAA Division I Schools.



Boys playing High School	Baseball	Basketball	Football	Soccer	Tennis
Odds of making <b>ANY</b> College Roster:	8:1	18:1	11:1	14:1	27:1
Odds of making an <b>NCAA I</b> Roster:	47:1	116:1	36:1	119:1	174:1

Girls playing High School	Softball	Basketball	Volleyball	Soccer	Tennis
Odds of making <b>ANY</b> College Roster:	11:1	15:1	17:1	14:1	27:1
Odds of making an <b>NCAA I</b> Roster:	47:1	116:1	36:1	119:1	174:1



## International Athlete Participation in NCAA Sports

	NCAA I Mens	NCAA I Womens	NCAA II Mens	NCAA II Womens
Tennis	63%	62%	58%	38%
Ice Hockey	36%	42%	6%	N/A
Soccer	34%	11%	26%	7%
Golf	21%	31%	20%	13%
Basketball	15%	12%	7%	4%
Volleyball	15%	9%	12%	2%

**Sports with less than 2% are Baseball, Softball, Football, and Wrestling**



## Estimated Probability of Competing in Professional Athletics

	NCAA Participants	Approximate # Draft Eligible	# Draft Slots	# NCAA Drafted	% NCAA to Major Pro*	% NCAA to Total Pro^
Football	71,291	15,842	256	255	1.6%	3.7%
M Basketball	18,320	4,071	60	47	1.2%	11.6%
W Basketball	16,319	3,626	36	32	0.9%	4.7%
Baseball	33,431	7,429	1,216	638	8.6%	--
M Ice Hockey	3,976	884	211	60	6.8%	--
M Soccer	23,602	5,245	76	72	1.4%	--

\* **Percent NCAA to Major Pro** figures are based on the number of available draft slots in the NFL, NBA, WNBA, MLB, NHL and MLS drafts only. See methods notes for important details on the definition of NHL draftee in men's ice hockey. Column percentages were calculated as (#NCAA Drafted) / (Approximate # Draft Eligible).

^ **Percent NCAA to Total Pro** takes the number of pro opportunities from the "% NCAA to Major Pro" calculation and adds in some additional professional opportunities that we were able to quantify. So, for football, this calculation includes NFL, Canadian Football League and Arena League slots available to first-year professionals. For men's basketball we accounted for NBA, NBA D-League and international opportunities. For women's basketball, we assessed WNBA and international roster slots. See methods notes for details on these calculations. Data on full-time international professional opportunities available in baseball, men's ice hockey and men's soccer were not analyzed here.











# **What is a typical schedule for a College Student / Athlete?**

**6 AM – Weigh In / Practice / Film**

**(Breakfast if possible in between)**

**8 AM - 12 PM - Classes**

**12 PM – 2 PM - Skills practice/lunch**

**2 PM – 3 PM - Class/meetings**

**4 PM – 5 PM – Grab dinner and do homework**

**5 PM – 6 PM - Head to the gym for treatment**

**6 PM – 9 PM – Practice**

**9 PM - ?pm - Study or Homework before you go to sleep**















gettyimages

Christopher Mast







1708480378

# Academic Scholarship Facts

**Per \$1,000 Dollars of Scholarship offered to Incoming College Freshman; \$900 dollars are given in Academics, as to \$100 dollars for Athletics.**

## Student / Athlete College Scholarships

**3% of High School Student / Athletes earn some Scholarship**

**Of those – less than 1% earn an Athletic Scholarship to a Division I School.**

**26% of students who enter college on an athletic scholarship as a freshman are no longer on scholarship entering their sophomore year.**

**80% of all Athletic Scholarships opportunities are not at the Division I level.**

# **What are the differences between High School and College?**



## **In High School.....**

- \* Your time is very structured.**
- \* Your Teachers check your work, remind you of missing homework or tests.**
- \* Testing is frequent and usually covers a small amount of material.**
- \* Grades are earned for assignments and projects.**

## **In College.....**

- \* You manage your own time. No one is there to get you out of bed or tell you to go to class.**
- \* Professors may not always check completed homework, however.... they will assume you can perform the same on tests.**
- \* Testing is usually infrequent and may be cumulative, covering lots of material. Some classes may only have 2 to 3 tests in a semester... and that is the only aspect your final grade is based upon.**
- \* Grades might not be given for homework....**
- \* Grades on tests and major papers usually provides most of the course grade.**



# Tuition and Fees for Montana Colleges for the 2024 / 2025 School Year

(Remember..... your Graduate in the Spring of 2028.... The Rates will change!)

<https://mus.edu>

You can sort the data provided to whatever you would like to see.

Example.....

Tuition to the University of Montana in Missoula or Montana State University in Bozeman

In-State = approximately \$8,000 for each College

Our of State = Roughly \$29,000 per year.

**THESE COSTS DO NOT INCLUDE DORM ROOMS OR APPARTEMNTS**

Being an In-State Student earning your B.A. or B.S degree will cost you more than \$32,000  
...without Housing.

Being and Out of State Student earning your B.A. or B.S. degree will cost you more than  
\$120,000...without Housing.



# Academic Rigor

- ▣ Please, please, please challenge yourself!
- ▣ Take the opportunity during the next four years to do all you can do. Get involved with school activities and do your best to take advantage of the education and experiences offered to you.
- ▣ **It's an investment** – the more put into it now, the more benefits will be available later.
- ▣ Start now as a Freshman, don't wait until you are a Senior.
- ▣ Differences in "Honors or Advanced" classes, and "Regular" classes are increased pace of work, increased depth of material and increased demands of out of class time (homework).

**Be Life, Career and College Ready!**

# Disclaimer!

As of the creation / completion of this presentation..... the School Year, the School Day, and the Daily Schedule **will** be *SIGNIFICANTLY* different than what was utilized in 2023 / 2024.

# UNDER CONSTRUCTION



# Proposed 2024 / 2025 Schedule

<b>Block 1/2</b>	<b>8:10 AM</b>	<b>9:36 AM</b>	<b>4 min pass</b>	<b>86 Min Class</b>
<b>Flex</b>	<b>9:40 AM</b>	<b>10:24 AM</b>	<b>4 min pass</b>	<b>44 Min Class</b>
<b>Block 3/4</b>	<b>10:28 AM</b>	<b>11:54 AM</b>		<b>86 Min Class</b>
<b>Lunch</b>	<b>11:54 AM</b>	<b>12:39 PM</b>	<b>45 min</b>	
<b>Block 5/6</b>	<b>12:39 PM</b>	<b>2:05 PM</b>	<b>4 min pass</b>	<b>86 Min Class</b>
<b>Block 7/8</b>	<b>2:09 PM</b>	<b>3:35 PM</b>	<b>4 min pass</b>	<b>86 Min Class</b>

# LHS 2024 - 2025



**Laurel Public Schools**

**2024-2025**

**CALENDAR**

**DISTRICT 7 & 7-70**

[www.laurel.k12.mt.us](http://www.laurel.k12.mt.us)  
(406) 628-3360

<b>July</b> S M T W T F S 7 8 9 10 11 12 13 14 15 16 17 18 19 20 21 22 23 24 25 26 27 28 29 30 31	<b>August</b> S M T W T F S 4 5 6 7 8 9 10 11 12 13 14 15 16 17 18 19 20 21 22 23 24 25 26 27 28 29 30 31	<b>September</b> S M T W T F S 8 9 10 11 12 13 14 15 16 17 18 19 20 21 22 23 24 25 26 27 28 29 30	<b>October</b> S M T W T F S 6 7 8 9 10 11 12 13 14 15 16 17 18 19 20 21 22 23 24 25 26 27 28 29 30 31
<b>November</b> S M T W T F S 3 4 5 6 7 8 9 10 11 12 13 14 15 16 17 18 19 20 21 22 23 24 25 26 27 28 29 30	<b>December</b> S M T W T F S 8 9 10 11 12 13 14 15 16 17 18 19 20 21 22 23 24 25 26 27 28 29 30 31	<b>January</b> S M T W T F S 5 6 7 8 9 10 11 12 13 14 15 16 17 18 19 20 21 22 23 24 25 26 27 28 29 30 31	<b>February</b> S M T W T F S 2 3 4 5 6 7 8 9 10 11 12 13 14 15 16 17 18 19 20 21 22 23 24 25 26 27 28
<b>March</b> S M T W T F S 2 3 4 5 6 7 8 9 10 11 12 13 14 15 16 17 18 19 20 21 22 23 24 25 26 27 28 29 30 31	<b>April</b> S M T W T F S 6 7 8 9 10 11 12 13 14 15 16 17 18 19 20 21 22 23 24 25 26 27 28 29 30	<b>May</b> S M T W T F S 4 5 6 7 8 9 10 11 12 13 14 15 16 17 18 19 20 21 22 23 24 25 26 27 28 29 30 31	<b>June</b> S M T W T F S 8 9 10 11 12 13 14 15 16 17 18 19 20 21 22 23 24 25 26 27 28 29 30



# Example of Purple and Gold Days

## Laurel High School 2023 - 2024 School Calendar

August '23						
Su	M	Tu	W	Th	F	S
		1	2	3	4	5
6	7	8	9	10	11	12
13	14	15	16	17	18	19
20	21	22	23	24	25	26
27	28	29	30	31		

September '23						
Su	M	Tu	W	Th	F	S
					1	2
3	4	5	6	7	8	9
10	11	12	13	14	15	16
17	18	19	20	21	22	23
24	25	26	27	28	29	30

October '23						
Su	M	Tu	W	Th	F	S
1	2	3	4	5	6	7
8	9	10	11	12	13	14
15	16	17	18	19	20	21
22	23	24	25	26	27	28
29	30	31				

November '23						
Su	M	Tu	W	Th	F	S
			1	2	3	4
5	6	7	8	9	10	11
12	13	14	15	16	17	18
19	20	21	22	23	24	25
26	27	28	29	30		

December '23						
Su	M	Tu	W	Th	F	S
					1	2
3	4	5	6	7	8	9
10	11	12	13	14	15	16
17	18	19	20	21	22	23
24	25	26	27	28	29	30
31						

January '24						
Su	M	Tu	W	Th	F	S
	1	2	3	4	5	6
7	8	9	10	11	12	13
14	15	16	17	18	19	20
21	22	23	24	25	26	27
28	29	30	31			

February '24						
Su	M	Tu	W	Th	F	S
				1	2	3
4	5	6	7	8	9	10
11	12	13	14	15	16	17
18	19	20	21	22	23	24
25	26	27	28	29		

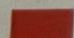
March '24						
Su	M	Tu	W	Th	F	S
					1	2
3	4	5	6	7	8	9
10	11	12	13	14	15	16
17	18	19	20	21	22	23
24	25	26	27	28	29	30
31						


April '24						
Su	M	Tu	W	Th	F	S
	1	2	3	4	5	6
7	8	9	10	11	12	13
14	15	16	17	18	19	20
21	22	23	24	25	26	27
28	29	30				


May '24						
Su	M	Tu	W	Th	F	S
			1	2	3	4
5	6	7	8	9	10	11
12	13	14	15	16	17	18
19	20	21	22	23	24	25
26	27	28	29	30	31	

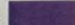
June '24						
Su	M	Tu	W	Th	F	S
						1
2	3	4	5	6	7	8
9	10	11	12	13	14	15
16	17	18	19	20	21	22
23	24	25	26	27	28	29
30						

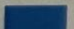
July '24						
Su	M	Tu	W	Th	F	S
	1	2	3	4	5	6
7	8	9	10	11	12	13
14	15	16	17	18	19	20
21	22	23	24	25	26	27
28	29	30	31			

 School Closed/ Holidays


 Teacher PIR (no school for students)


 Periods 1-3-5-7

 Periods 2-4-6-8

 End of Quarter

 Graduation

 First/Last Day of School

 PT Conference  
11.02.23 = PURPLE  
11.09.23 = GOLD  
03.21.24 = GOLD

Q1 = 10/27 PURPLE  
Q2 = 1/12 PURPLE  
Q3 = 3/21 GOLD  
Q4 = 5/30 GOLD

# **Freshman Course Selections**

**2024 - 2025**



## Classes for Freshmen

**“S” = Semester Long Class**

**“Y” = Year Long Class**

**“A” = First Semester Class**

**“B” = Second Semester Class**

**“A.B” = First Semester Class offered Second Semester**

**“B.A” = Second Semester Class offered First Semester**



# Plan for 9th Grade

## Required Classes:

English – 1 year = 2 semesters

Math – 1 year = 2 semesters

Science – 1 year = 2 semesters

Information Literacy & Technology - 1 semester

Physical Education/Health Grade 9 - 1 semester

**You are required to select a total of 8  
classes each semester.**

# **How to Register for Classes on Infinite Campus**

# Infinite Campus Google Chrome

Please go to

<http://www.laurel.k12.mt.us>

On the top tool bar, select

**“Parent”**

For Students

Go to “Parent” > IC > Campus Student > Log In

For Parents

Go to “Parent” > IC > Campus Parent >

Log In or New User

*Please write down 8/choices for each semester. Please also write down two back up courses for each semester and enter them into IC. A designates 1st semester & B designates 2nd semester.*

	<b>Course Name</b>
--	--------------------

### **1<sup>st</sup> Semester**

<b>1</b>	English 9- A
<b>2</b>	(Math)
<b>3</b>	(Science)
<b>4</b>	Info Lit & Technology (ILT) A <b>or</b> PE/Health 9 A
<b>5</b>	
<b>6</b>	
<b>7</b>	
<b>8</b>	
	Back up course

### **2<sup>nd</sup> Semester**

<b>1</b>	English 9- B
<b>2</b>	(Math)
<b>3</b>	(Science)
<b>4</b>	Info Lit & Technology (ILT) B <b>or</b> PE/Health 9 B
<b>5</b>	
<b>6</b>	
<b>7</b>	
<b>8</b>	
	Back up course



## How to Register:

1) Login to your Infinite Campus Portal

Username = your school ID number

Password = firstnamelastnamemiddleinitialmmddyyyy

2) On the LEFT side.... Click “MORE”

3) Click “Course Selection”

4) On the LEFT side..... click “MORE”

5) Click “2024-2025 Laurel High School “

6) Start to add your classes

7) You can search for the name of the course

8) You can add it as a “REQUEST”; meaning **you want the class on your schedule**

**OR**

You can add it as an “ALTERNATIVE”; meaning if another elective doesn’t work this class will be added.

9) You must be 100% done with your classes to have a FULL schedule.

A Full Scheduled is 8 classes for the 1<sup>st</sup> semester and 8 classes for the 2<sup>nd</sup> semester.

**\*\* click the “+” sign to add the class.**

**\*\* click on the class to see a description of the class**

**PLEASE NOTE!**  
**TO TAKE AN**  
**“ADVANCED COURSE”**  
**A SIGNATURE IS**  
**REQUIRED BY YOUR**  
**8<sup>TH</sup> GRADE**  
**INSTRUCTOR**

# English Choices

English 9-Y

OR

Advanced  
English 9-Y





# Math Choices

If you took General Math as an 8<sup>th</sup> grader – your Freshman Math Class should be Pre-Algebra

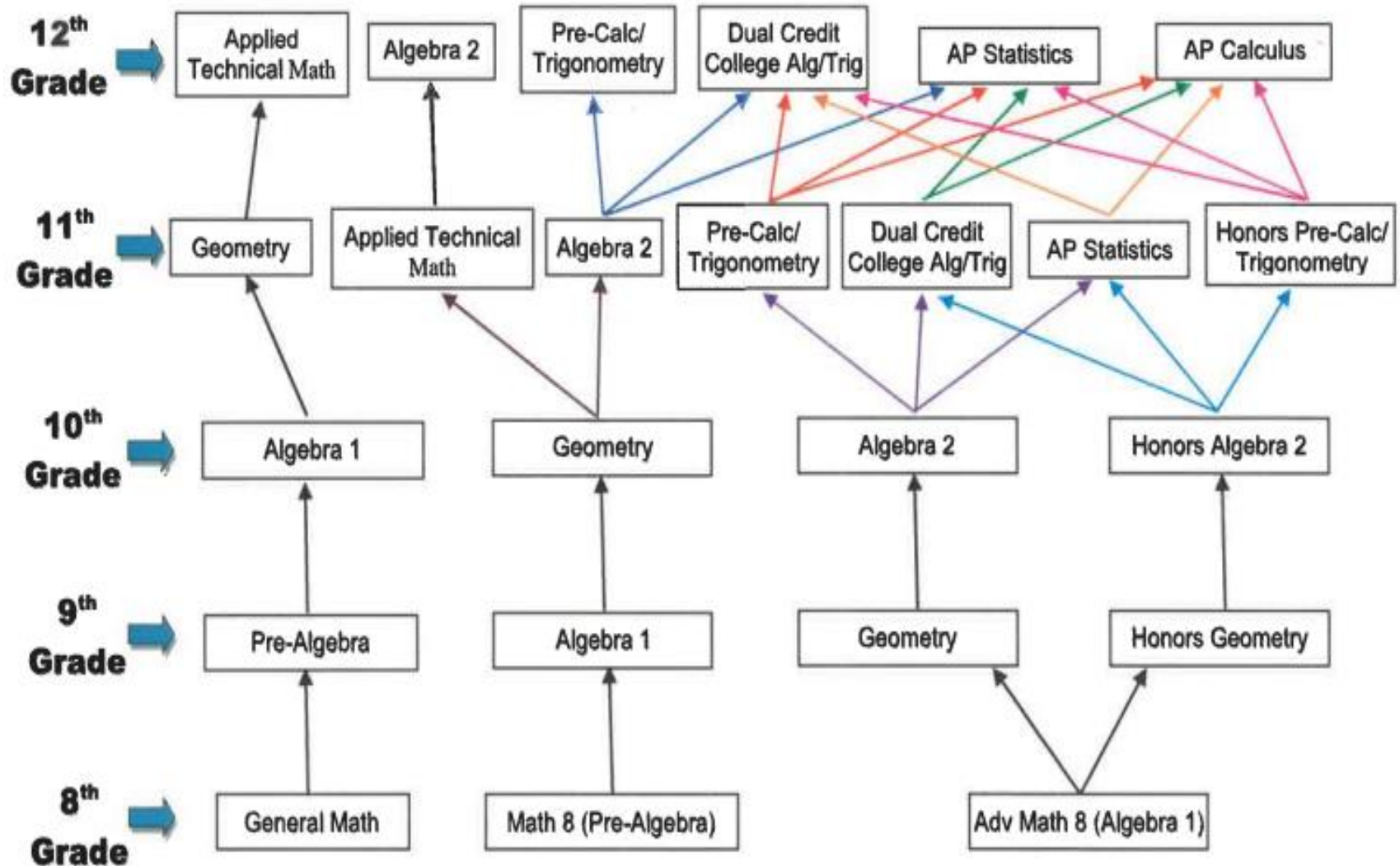
If you took Math 8 as an 8<sup>th</sup> grader – your Freshman Math Class should be Algebra I.

If you took Advanced Math 8 as an 8<sup>th</sup> grader – your Freshman Math Class should be Geometry.

With your Instructor's Recommendation, and NWEA Math Score – you may be offered to take Honors Geometry.



# Math Course Sequencing Chart



# Science Choices

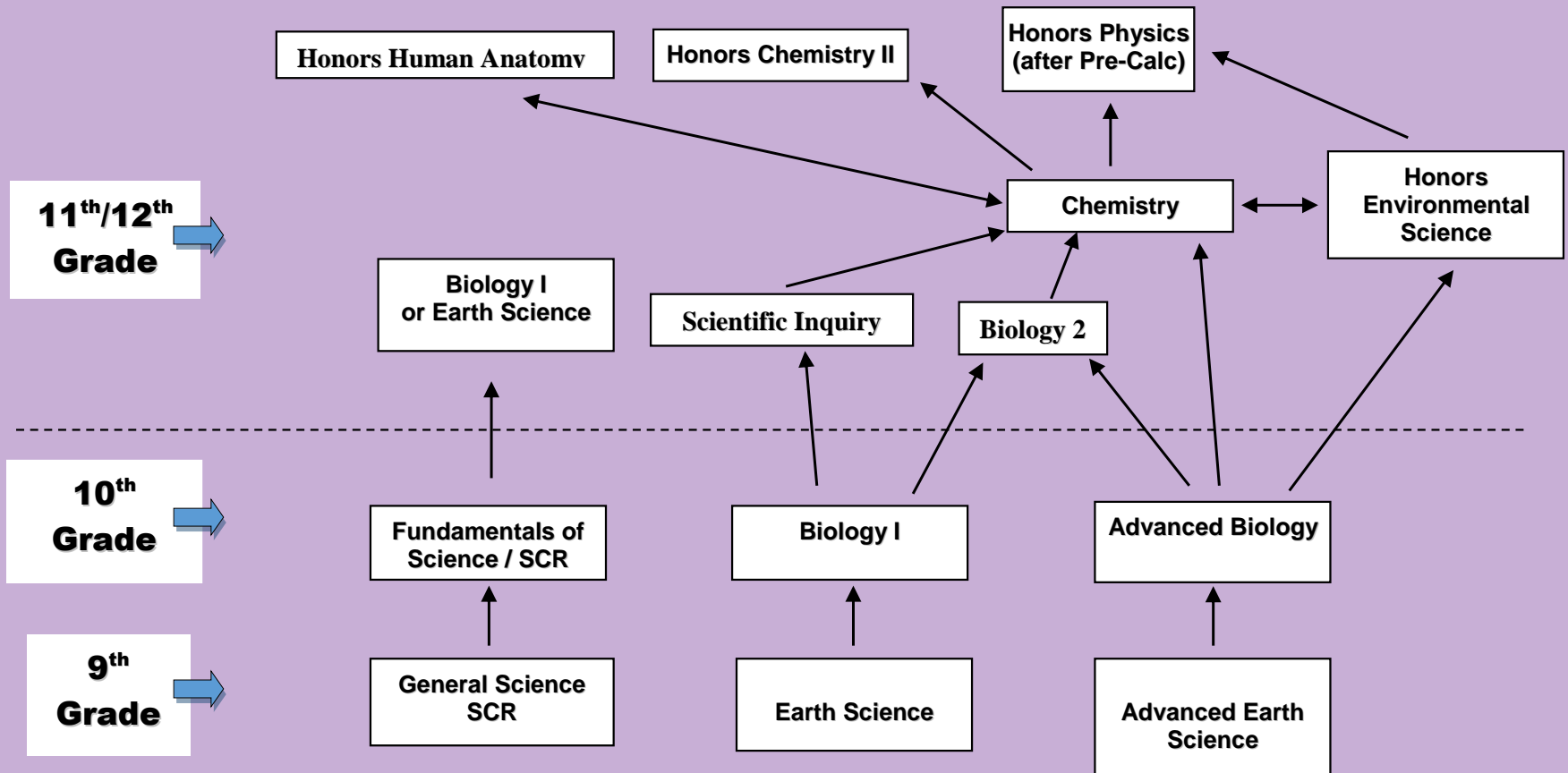
Earth Science (Y) or Advanced Earth Science (Y)

Four Year Plan – College prep = Earth Science, Biology I, Biology II, Chemistry, Physics

Rigorous Prep = Advanced Earth Science, then Advanced Biology, then your choice: Chemistry, Physics, Chemistry 2, Honors Environmental Science, Honors Human Anatomy



# Science Course Sequencing Chart



The traditional student is required to complete a biology and earth science credit by the end of sophomore year. Advanced and regular options are available.

Students wishing to have earlier access to upper level science courses may take both a Biology and Earth Science credit as a freshmen.

# Information Literacy & Technology

Information Literacy & Technology is a required course for all freshman. It is only a semester course.

Mastering different software platforms

Career and Post-High School Planning

Appropriate Technology Use Policies and Safety

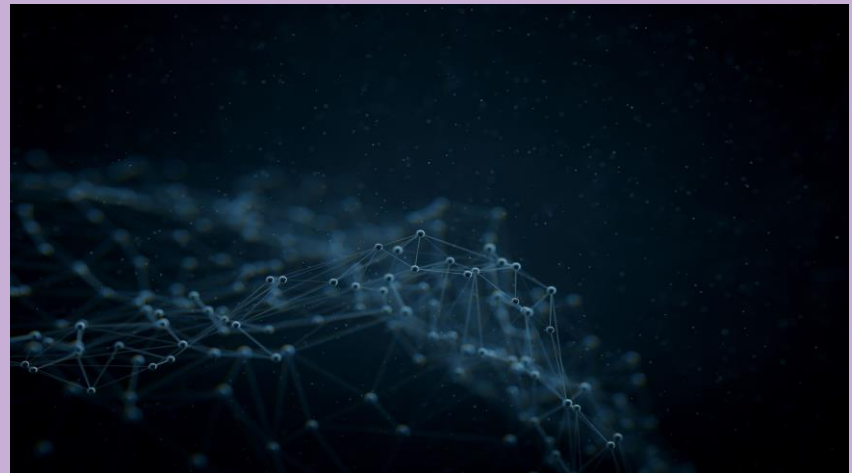
# Other Technology

Must pass ILT first

Graphic  
Design

And

Video  
Productions





# **FOREIGN LANGUAGE**

**SPANISH I - Y**

**SPANISH 2 - Y**

# Social Studies

## Montana History-S



# Family & Consumer Sciences

World of FACS - S



Foods 1 - Y



Foods 2 - Y

Culinary I - Y



Culinary 2 - Y

Housing & Interior

Design - S



# MUSIC and ART

Concert Choir - Y

Chorale - Y

Treble Choir - Y

Honors A Cappella - Y

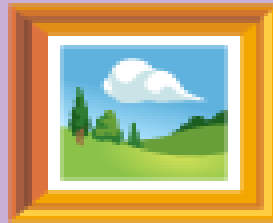
Concert Band - Y

Jazz Ensemble - Y

Honors Symphonic  
Band - Y

Art 1A- First semester

Art 2B- Second semester



# Agriculture and CTE

Intro to Agriculture and

Natural Resources - Y

Agriculture Comprehensive - Y

Natural Resources and  
Agriculture - Y

Plant Science - Y

Welding I - S

Welding 2 - S

Woodworking - S

AutoCAD Drafting - S

NASA - Y



# PHYSICAL EDUCATION

PE / Health 9 - S

Beginning Strength &  
Conditioning - S

Strength &  
Conditioning I - S





# Academic Seminar

**\*Please note. As of the construction of this presentation.... This may not exist for 2024 - 2025**

**“Structured” Study Hall.**

**More guidance with keeping up with school work and getting more help on school work**

**.25 credit per semester.**

# There is homework most EVERY day!

Please make the best use of your time at school to keep up with your school work. It is much easier to keep up with your grades and your classes than having to play “Catch-up” all of the time.

If you need help with a class, *please* visit with your Teacher.

They are here to help you.

# EXTRA-CURRICULAR ACTIVITIES

Girls/Boys Basketball

Boys Football

Laurelaires

Girls / Boys Track

Girls Softball

Girls / Boys Golf

Girls / Boys Soccer

Girls / Boys Cross Country

Cheer

Girls Volleyball

Girls / Boys Wrestling

Speech, Drama, Debate

ProStart

We The People

*And coming soon...*

*Boys Baseball.....*



# Clubs and Organizations

\*Art / Culture

\*Chess

\*Drama

\*Dungeons & Dragons /  
Games

\*Future Farmers of  
America

\*GSA

\*Spanish

\*Locomotive Express

\*Outdoors Club

\*Ping Pong Club

\*NASA

\*National Art Society

\*National Honor Society

\*Science Bowl / Olympics

\*Skills USA

\*Student Counsel

\*Western Way of Life

\*We the People

\*Business Professionals of  
America

\*FCCLA

**PHONES**

## *My Experience.*

*I am one of the younger of all my coworkers and as a result am more in tune with cell phones and the tricks that kids will often use to get away with unhealthy behaviors. I am a licensed addiction counselor and have seen/heard a lot of the different things that kids do for this purpose as well. In high school, I would use similar tricks to get into a lot of different dangerous situations myself. I am up to date on current trends due to my own amount of extensive internet use. I have often seen my own friends pull these sort of stunts. I have experience working at residential group homes, homeless shelters, rehab facilities, juvenile detention, public schools, and more. I've seen a lot of different ways to get away with different things in different settings.*



# ARE YOU ADDICTED TO YOUR PHONE?



# Question for Parents / Guardians

**Do you know how many phones your child has?**

**More students than you think buy and sell phones to other students.**

**Some students have multiple phones.**

**The most phones that I know of a student having at one time.... Is 5..**



# **Dangerous Apps on a Phone**

- ▣ **Snapchat**
- ▣ **Tick Tok**
- ▣ **Whisper**
- ▣ **Grindr**
- ▣ **Tindr**
- ▣ **Twitter**
- ▣ **Facebook Messenger**

# Stomp Out Bullying



# **Laurel Public School Policy on Bulling, Harassment, Intimidation and Hazing**

## **Laurel Public School District 7 & 7-70**

- ▣ **Students Board Policy R 3226**
  - **Definitions, Reporting ,Responsibilities, Consequences, Retaliation and Reprisal**
- ▣ **Personnel Board Policy R 5015**
  - **Definition, Reporting, Responsibilities, Consequences, Retaliation and Reprisal**

## Anti-Bullying for Laurel Public Schools

LPS definition of Bullying: Bullying behavior happens when someone uses his or her power to hurt another person.

"Harassment", "Intimidation", and "Bullying" means any threatening, insulting, or demeaning gesture of physical conduct, including a intentional written, verbal, or electronic communication or treat directed against a student or students regardless of the underlying relationship or contact that:

- Causes a Student physical or mental harm, damages a student's property;
- Is sufficiently severe, pervasive or persistent as to interfere with or limit a student's ability to participate in or benefit from educational opportunity or benefit; and/or
- Substantially disrupts the orderly operation of the school.

Bullying behavior often includes the following:

- Physical hurting by hitting, tripping, pushing, biting, etc.
- Using name-calling, put-downs, teasing, mockery, racial slurs, sexual comments, or swearing to insult, intimidate, or make someone
- Spreading rumors about someone.
- Excluding someone on purpose from a group activity, or trying to get others to not play with someone
- Using cruel gestures or facial expressions
- Touching or showing private body parts
- Taking or damaging someone's possessions

Adults at our school will do the following to prevent bullying and to help students feel safe at school:

- Implement classroom instruction regarding bullying behavior
- Watch for signs of bullying and stop it when it happens
- Respond quickly and sensitively to bully reports
- Closely observe students inside the building and elsewhere on campus
- Take parents' concerns about bullying seriously
- Assign consequences to bullying and contact parents
- Address issues in class as needed
- Support student's who have been bullied

Students attending a Laurel Public School will do the following to prevent bullying:

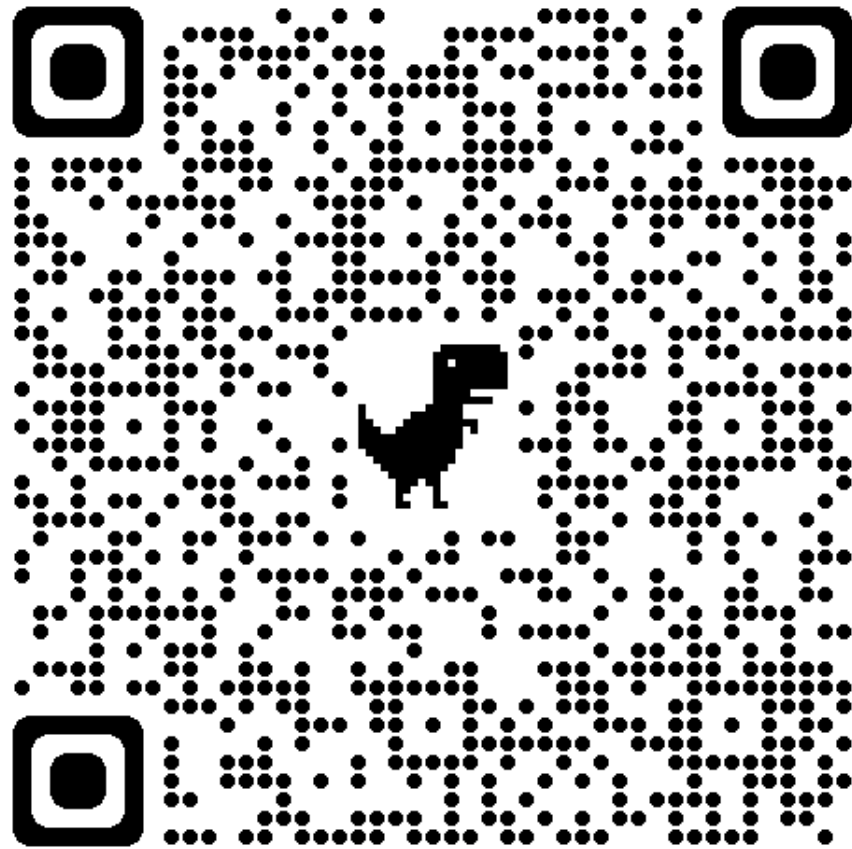
- Treat each other with respect
- Refuse to bully others
- Refuse to let other students be bullied
- Refuse to watch, laugh, or join when someone is being bullied
- Try to see the other person's point of view
- Report bullying to an adult

The consequences of bullying and supporting bullying may, depending on the age of the child, include but is not limited to

- Parental notification
- Loss of privilege(s), including participation in school activities
- Parent conferences
- Reassignment of seats
- Reassignment of classes
- Reassignment of another mode of transportation
- Escort of the perpetrator
- Completion of apology letter and acknowledge of behavior
- Referral to appointments with school counselor or other professionals
- Payment to damaged property
- Detention
- Suspension (in-school or out-of-school)
- Referral to law enforcement
- Expulsion



# Jeff Veley



# **We are going to replace a Word**

**As of now.....**

**We will not use the word “Bully” anymore.**

**We will replace it with:**

**A person with poor skills.**

**A person looking for help.**

**A person looking for attention.**

**A person who is trying to influence.**

**A person trying to have control.**

**A person trying to control others.**

## **Inappropriate Behavior**

**If you witness or are a person who is receiving inappropriate behavior.....**

**PLEASE report it to a school employee, parent, or the police.**

**This behavior is not appropriate, not acceptable, and will be dealt with by school administration.**

# Poor Behavior from a Person

- ▣ 1. How do you tell a friend that what they are doing to others is not ok?
- ▣ 2. How to not be a victim.
- ▣ 3. Be an “Upstander”.

**How do I tell a friend that  
what they are doing to others  
is not ok?**

**Say Something!**

**Do Something!**

**Point out the risks.**

**Lead by example.**

**Set boundaries.**

# How to not be a victim

Use Confident Body Language

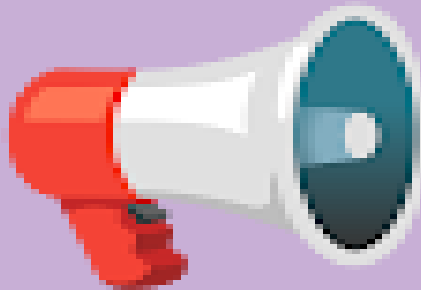
Stay in a Group

Trust Your Gut

**Focus on Flight** - Not Fight

Use an Assertive Voice

Attract Attention





# 8 Ways to Prevent Poor Behavior in Students

- ▣ **Begin at Home**
- ▣ **Learn the Warning Signs**
- ▣ **Instill Healthy Habits**
- ▣ **Empower Your Kids**
- ▣ **Become Familiar With Your School's Policies**
- ▣ **Report Incidents of Bad Behavior**
- ▣ **Be an Advocate**
- ▣ **Recruit Other Parents**

# **8 Ways to Stand Up to the person who needs help**

**Attract Attention**

**Ignore the person**

**Tell the person to Stop**

**Make a Joke**

**Avoid Hot Spots**

**Stick With Friends**

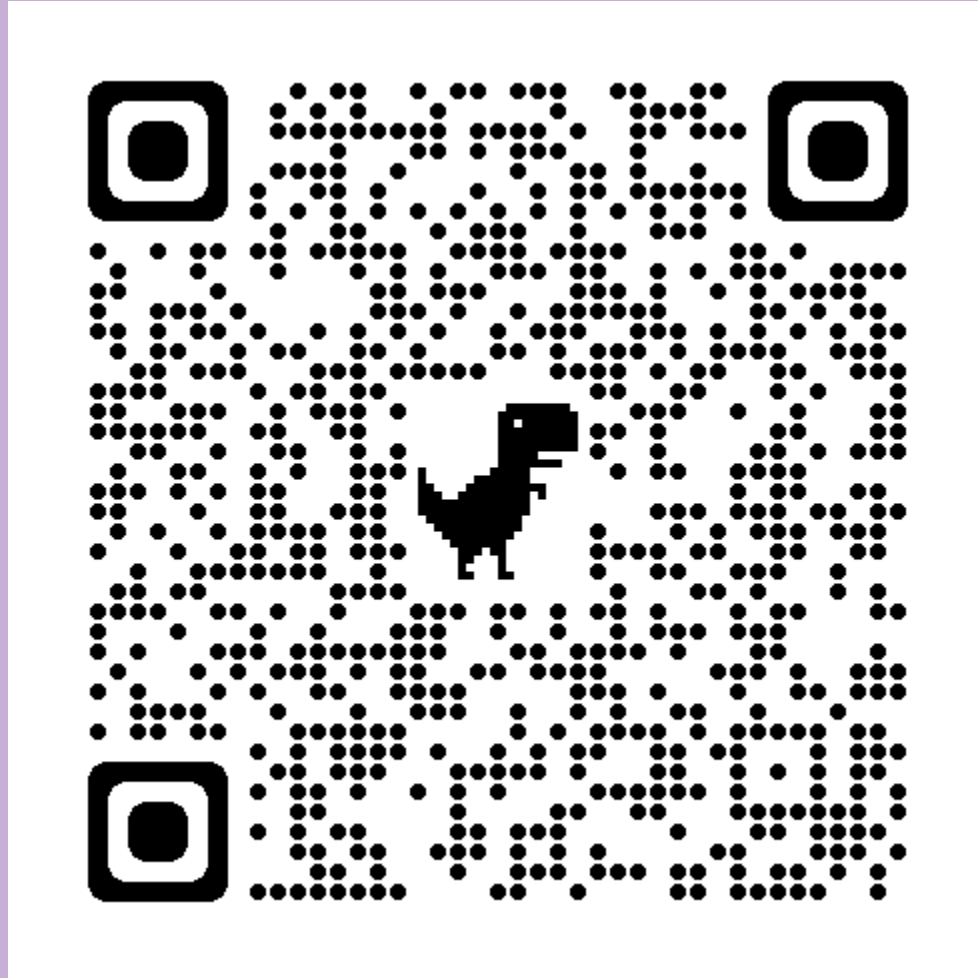
**Know How to Walk away from the Situation**

**Report the Person with Poor skills to an Adult**

**Treat your “Enemy” like your Friend**

**What does  
Montana Law  
say about  
bullying issues?**

# Laws for Bullying in Montana



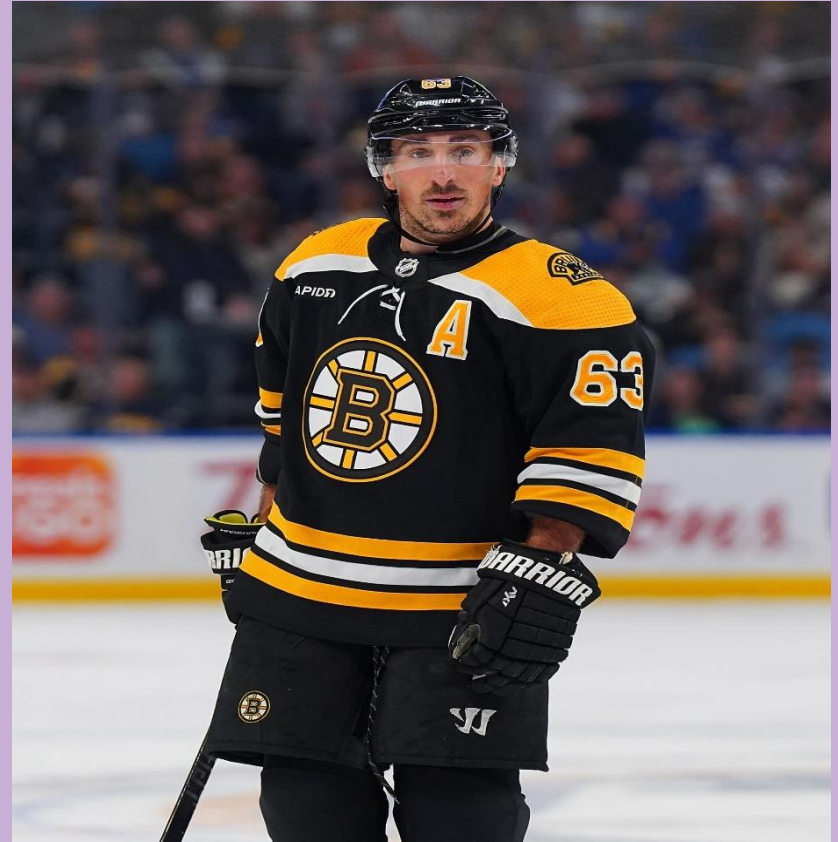
# Boston Bruins



**Patrice Bergeron**

8.75 Million Dollars per Year

Drafted in 2003



**Brad Marchand**

5 Million Dollars per Year

Drafted in 2006

# Other Information Sources

<https://www.stopbullying.gov/>

<https://opi.mt.gov/bullyfree/>

<https://dojmt.gov/safeinyourspace/for-teens-tweens-cyberbullying/>



# Additional Resources

- ▣ General Middle to High School Transitioning

<https://youtu.be/D-rMhawdNMc>

- ▣ A general parent bullying video

<https://youtu.be/OIJ26dNSuZc>

- ▣ Funny video for the kids:

<https://youtu.be/aena2d-4BoA>

# Information

## Attendance and Tardy Policy

### Be on time and be in class!

Communicate with teachers when concerned. Please do not wait for mid-terms. Please use email or phone. Email addresses and phone numbers will be posted on web. Infinite Campus is the easiest way to obtain information.

Students are earning credits towards graduation. If a Student fails a classe(s) needed to graduate, that class will be taken again until the student earns a passing grade.

**This could mean the student should attend “Summer School”.**

Lunch at Laurel High School is \$3.10 for daily specials.

An A la carte menu also offers food and are individually priced. We offer Breakfast, Grab-and-Go Breakfast, and Lunch.

# Additional Information

Eligibility is determined at midterm and quarter. **Freshmen eligibility is based on the eighth grade 4<sup>th</sup> quarter grades.** Students must have a 2.0 GPA and no more than 1 failing mark.

**Driver's Ed** – Students must be 14 ½ the first day of class. Cost - \$250. Classes are offered throughout the summer. Announcements will be made at the middle school about registration.

For more information about Driver's Ed:

<http://www.laurel.k12.mt.us/1/Content2/270>

# New Students to LHS

If you are an out-of-district student, to begin the registration process of entering Laurel Public Schools students must first register at the Central Administration office:

410 Colorado Avenue, Laurel, MT 59044

Contact person is the District Information Secretary

Lisa Harris - 628-3360 ext. 3343

[lisa\\_harris@laurel.k12.mt.us](mailto:lisa_harris@laurel.k12.mt.us)

# Short Phrases that make a HUGE Difference

- ▣ It takes no talent to hustle.
- ▣ Never be “out-worked”.
- ▣ Eyes on the Prize.
- ▣ Block out the haters.
- ▣ Don’t look back. We get no “do-overs”.
- ▣ Take care of yourself.
- ▣ Don’t dig your own hole.
- ▣ Be nice. You never know who you will meet.

**QUESTIONS?**



# **Welcome to Laurel High School!**



## **Go Locomotives!**