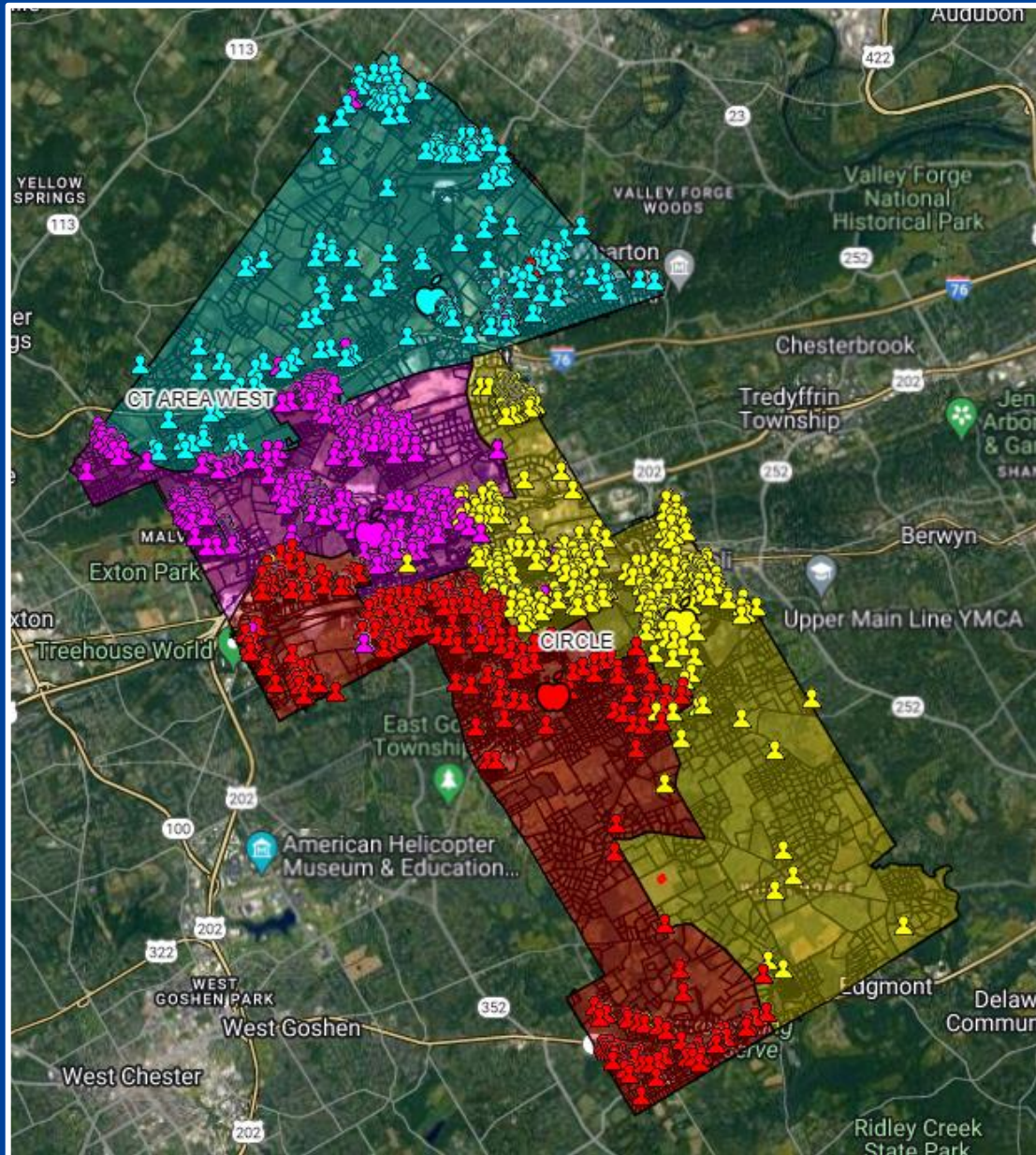




GREAT VALLEY SCHOOL DISTRICT

REDISTRICTING OPTIONS

March 11, 2024



ESTIMATED ENROLLMENTS FOR 2024-2025 (K-4)

- Charlestown: 268 (blue)
- KD Markley: 546 (pink)
- Sugartown: 468 (red)
- General Wayne: 581 (yellow)

Criteria for Decisions

- Targeted Capacity of Schools
- Accommodate for Future Growth
- Preservation of Neighborhoods
- Student Travel Time on Busses
- Geographic Preference
- Township Lines Not Used as Guidelines
- Plan Must Make Sense



Why Redistrict?

Rising Enrollment

- SY 20-21 4,510 students
- SY 21-22 4,610 students
- SY 22-23 4,699 students
- SY 23-24 4,799 students

Birth Rates Have Increased

- 2018 278
 - 2019 358
 - 2020 325
 - 2021 378
- *average from 2013-2017 was 288

Why Redistrict?

Projections

- Elementary enrollment will continue to grow over next five years
- Over the last 3 years, elementary retention rates have exceeded 100% (117% in K & 114% in 1st)

Limited Capacity of Schools

- Calculations vary and do not always account for specialized programs and services
- Practical maximum capacity limits: CT 425 GW 680
KDM 680 ST 575

Planning for New Housing & Growth

- Knickerbocker Development 260 units – 3 bedrooms
- Potential for future development through the district and especially in East Whiteland Township

Previously Shared Options (from February 5)

Option #1	Capacity	Estimated Enrollment K-4	Charlestown Oaks	Charlestown Meadows	Bacton Hill, Spring Valley, 401	Aston, WB Phoenixville Pk, Hillbrook	Downeast, Hillside, Malin Station	Malvern West	N. Sugartown	WB 30 from Church to 202	Knickerbocker*	Atwater	Total	Enrollment Change
Charlestown	450-500	268	60	29	45	11							413	145
KD Markley	650-700	546	(60)	(29)	(45)	(11)	34			77			512	(34)
General Wayne	675-725	581					(34)	(47)	(14)		70		556	(25)
Sugartown	550-600	468						47	14	(77)			452	(16)

Option #2	Capacity	Estimated Enrollment K-4	Charlestown Oaks	Charlestown Meadows	Bacton Hill, Spring Valley, 401	Aston, WB Phoenixville Pk, Hillbrook	Downeast, Hillside, Malin Station	Malvern West	N. Sugartown	WB 30 from Church to 202	Knickerbocker*	Atwater 50%	Total	Enrollment Change
Charlestown	450-500	268			45							94	407	139
KD Markley	650-700	546			(45)								501	(45)
General Wayne	675-725	581							(14)		70	(94)	543	(38)
Sugartown	550-600	468							14				482	14

Option #3	Capacity	Estimated Enrollment K-4	Charlestown Oaks	Charlestown Meadows	Bacton Hill, Spring Valley, 401	Aston, WB Phoenixville Pk, Hillbrook	Downeast, Hillside, Malin Station	Malvern West	N. Sugartown	WB 30 from Church to 202	Knickerbocker*	Atwater 100%	Total	Enrollment Change
Charlestown	450-500	268										179	447	179
KD Markley	650-700	546											546	-
General Wayne	675-725	581							(14)		70	(179)	458	(123)
Sugartown	550-600	468							14				482	14



Option 1: Multiple Neighborhoods



- More fully utilizes Charlestown
- Shorter or same travel times for involved neighborhoods
- Provides good balance across all schools
- Involves the greatest number of students (317 students)



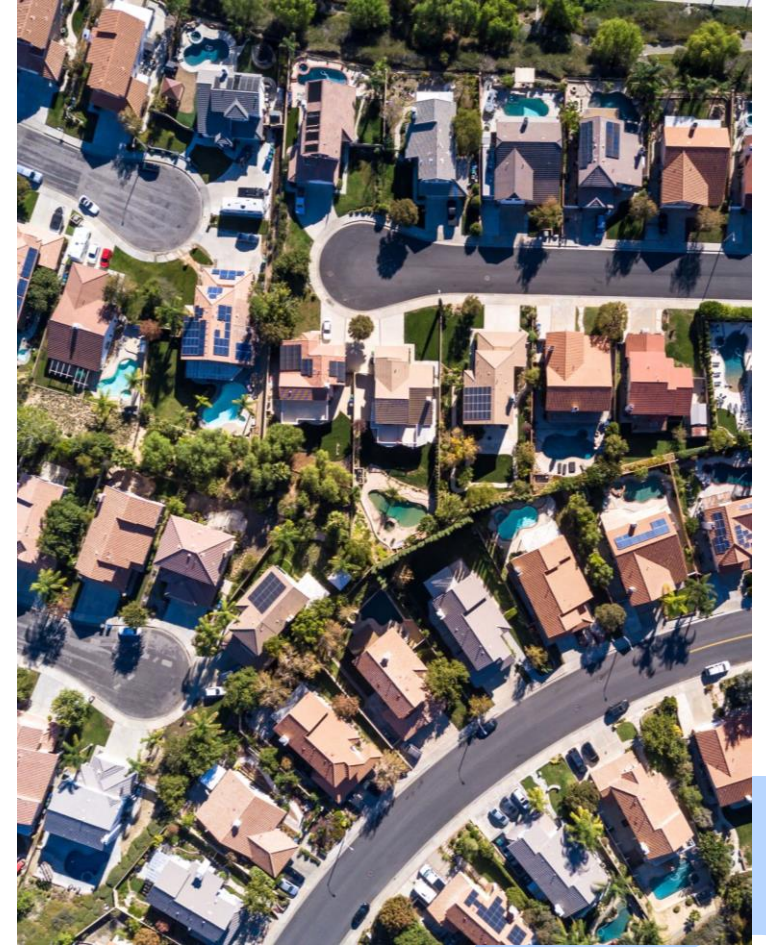
Option 2: Moving PART of Atwater, North Sugartown Road, and North Bacton Hill



- Shorter travel times for North Sugartown Road
- More fully utilizes Charlestown
- Provides best balance across all schools
- Involves the least number of students (153 students)
- Travel times to Charlestown & General Wayne vary significantly (Atwater)
- North Bacton Hill same travel time
- Atwater was previously reassigned
- Separates the Atwater development

Option 3: Moving ALL of Atwater & N. Sugartown Road

- Entire Atwater Development remains intact
- Shorter travel time to and from school for both
- Slight enrollment relief for General Wayne
- Charlestown will be overcrowded
- Atwater was most recently reassigned
- Involves second largest number of students (193)



Updated Options 1A and 3A

(revised versions of Options 1 and 3 from February 5)



Option 1A: Multiple Neighborhoods

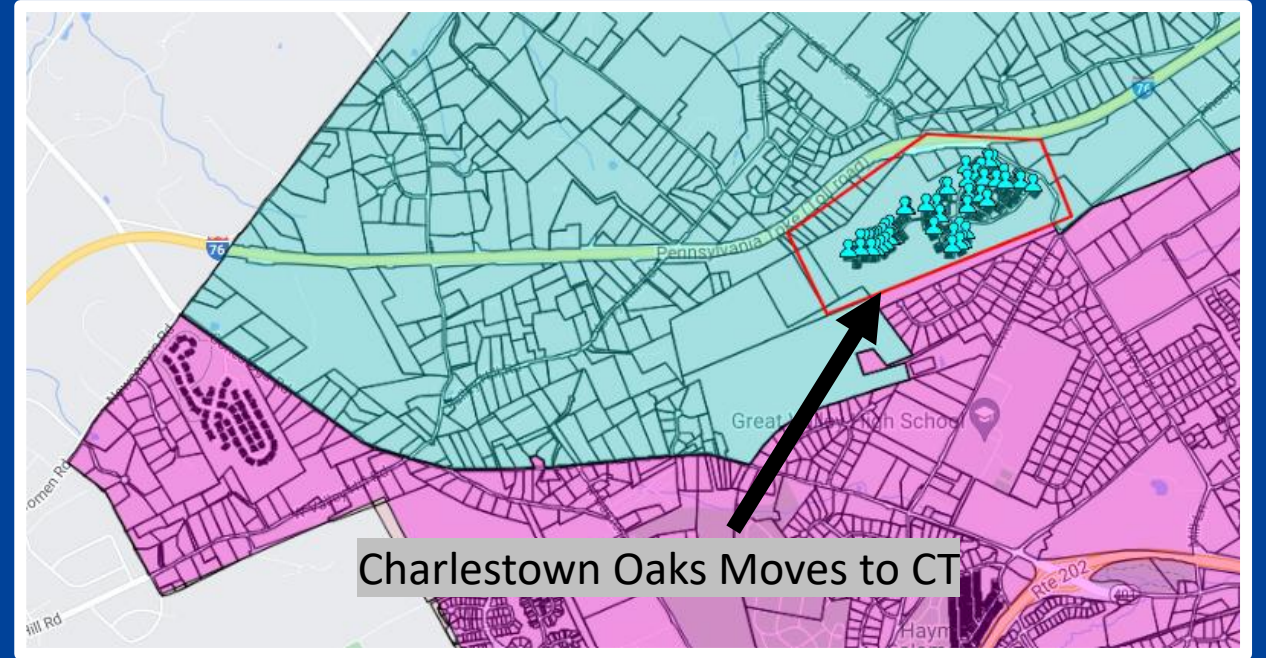
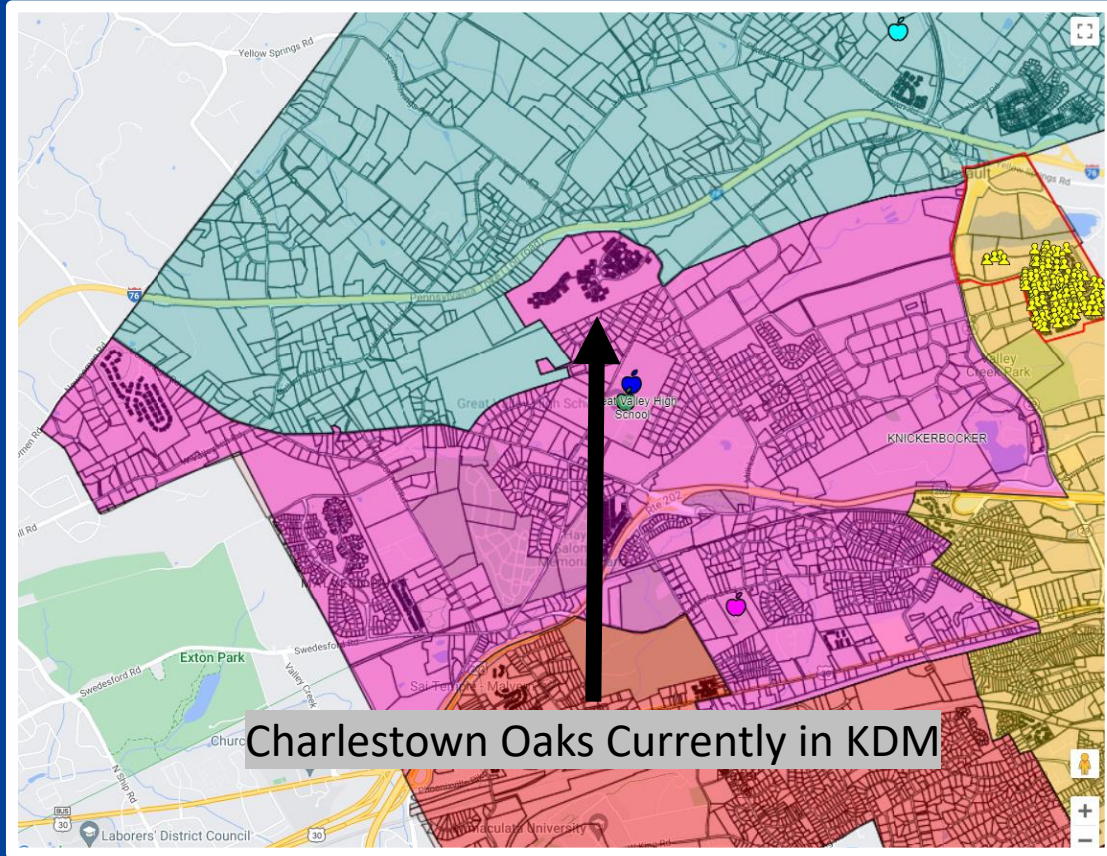


- Involves 5 Current Areas

- | | |
|---------------------------------------|--------------------------------|
| • Charlestown Oaks | from KDM to Charlestown (60) |
| • Charlestown Meadow | from KDM to Charlestown (29) |
| • Bacton Hill, Spring Valley, 401 | from KDM to Charlestown (45) |
| • Aston, Phoenixville Pike, Hillbrook | from KDM to Charlestown (11) |
| • Downeast, Hillside, Malin Station | from General Wayne to KDM (34) |

Knickerbocker Development remains at KDM

Moving Charlestown Oaks to Charlestown

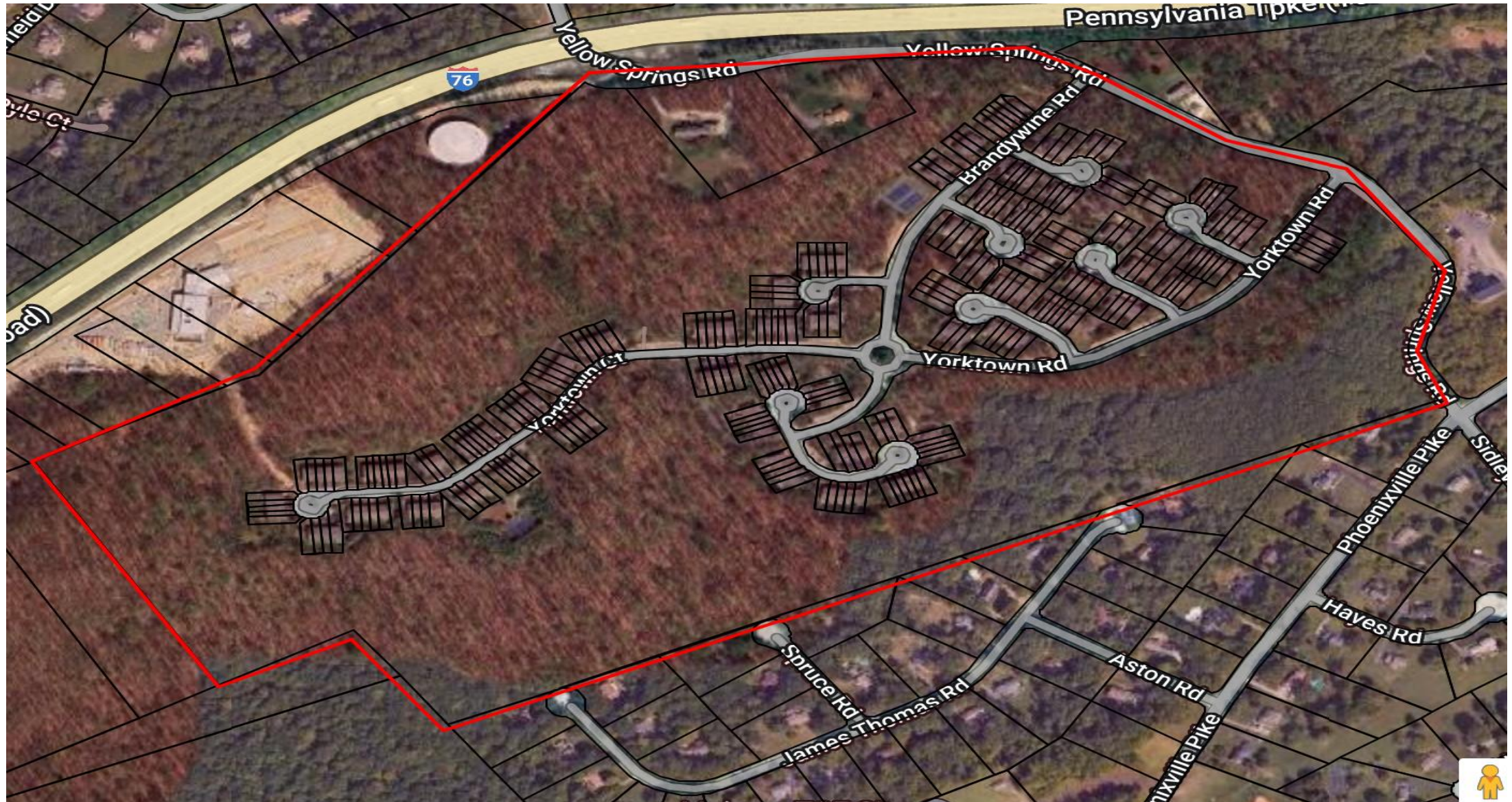


Estimated number of K-4 students for 24-25 = 60

Charlestown Oaks

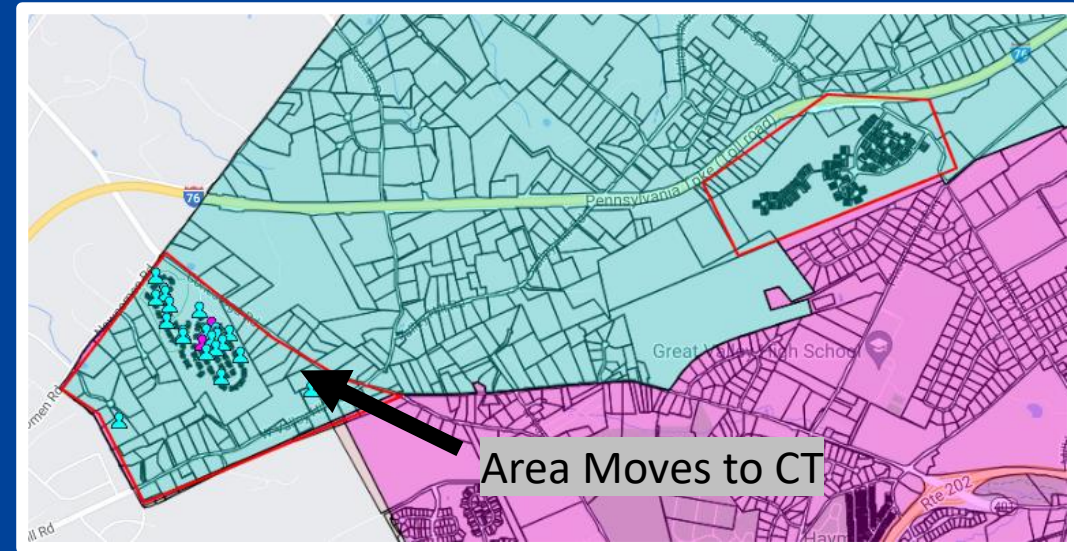
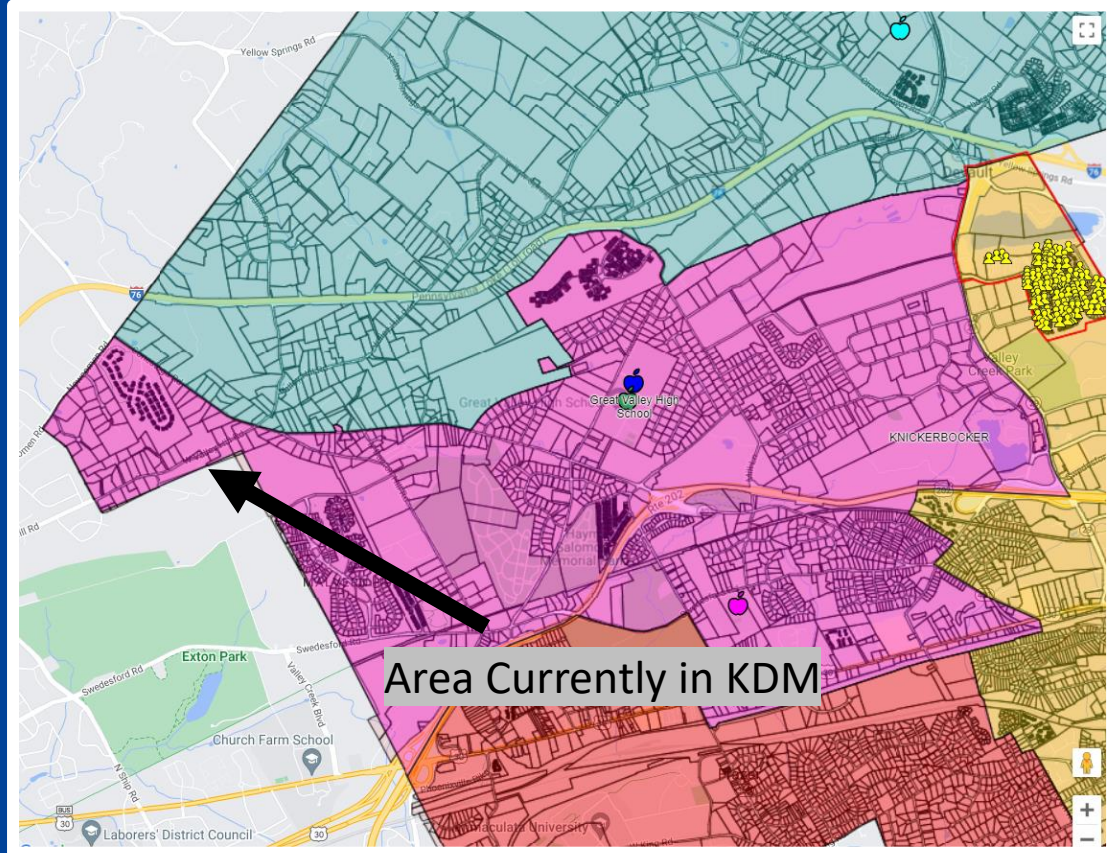


Charlestown Oaks



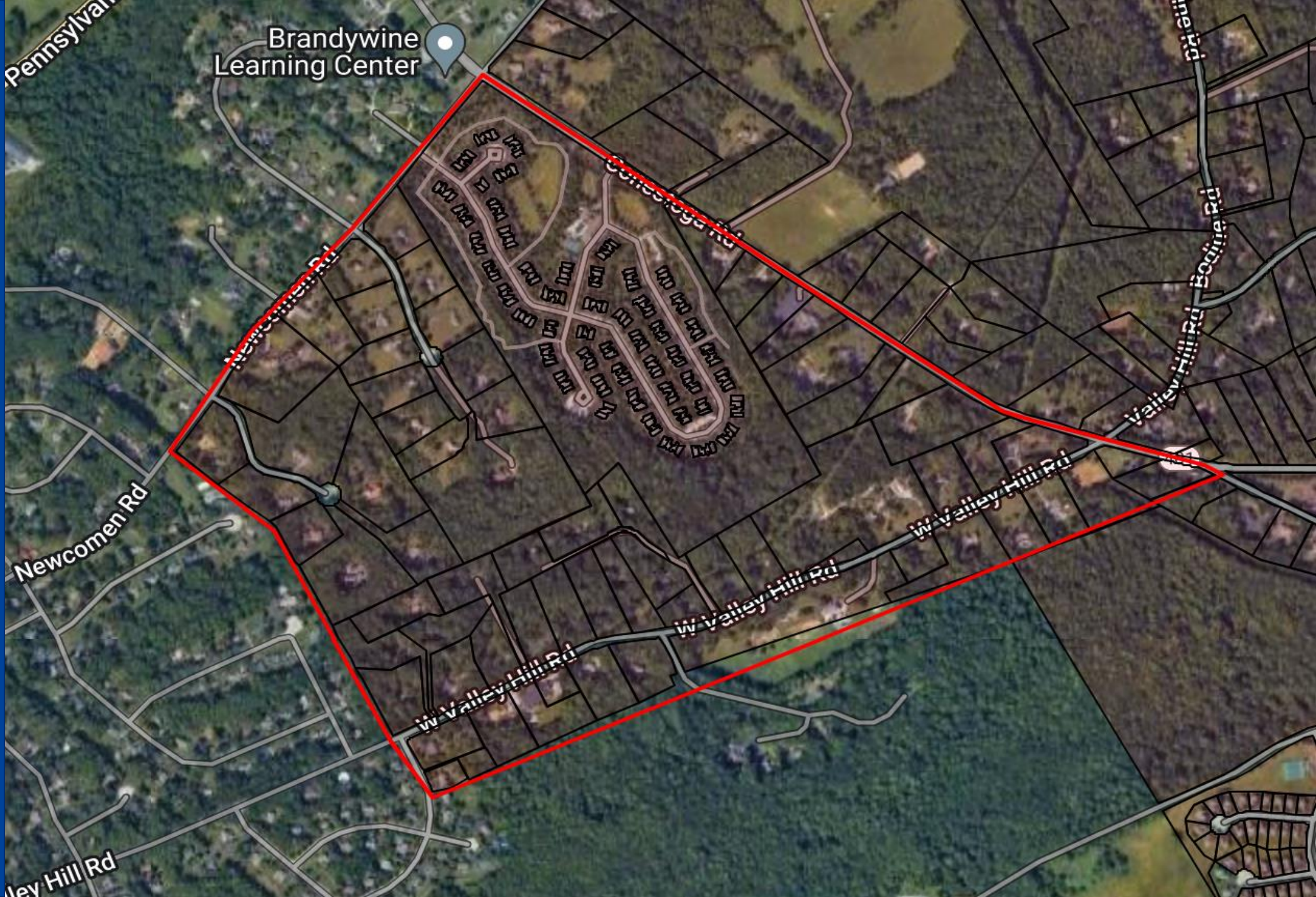
Moving Charlestown Meadow to Charlestown

Wyndham Ln., Eastbound 401, West of Valley Hill, Valley Hill West of 401 to Charlestown

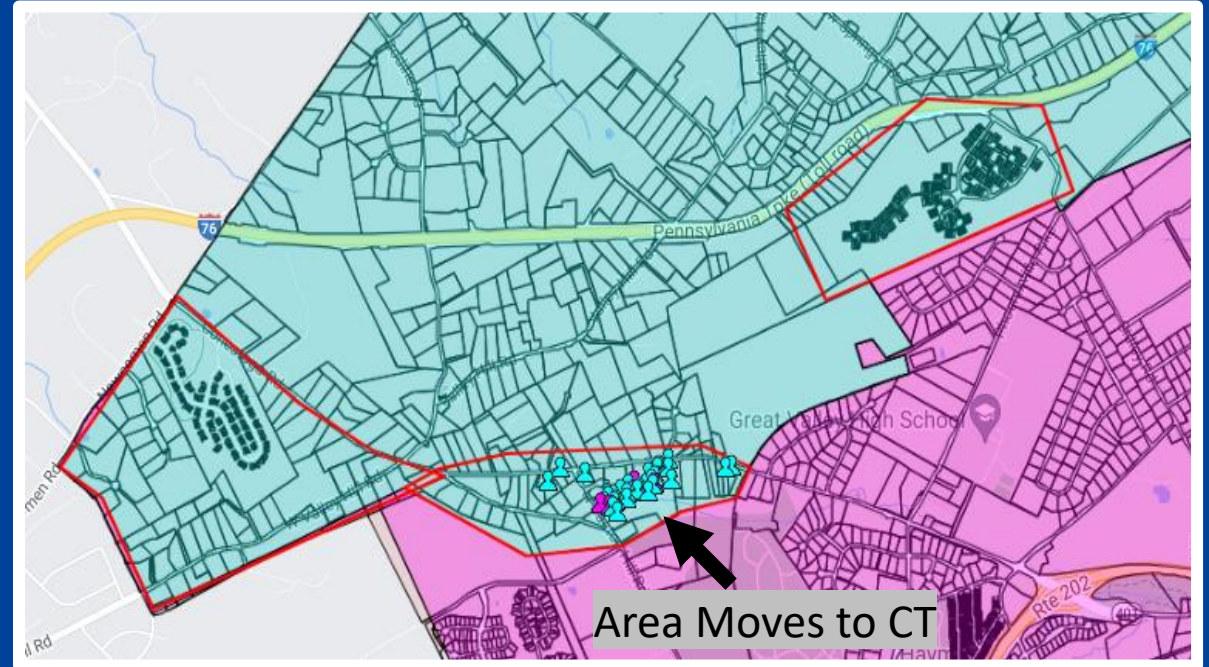
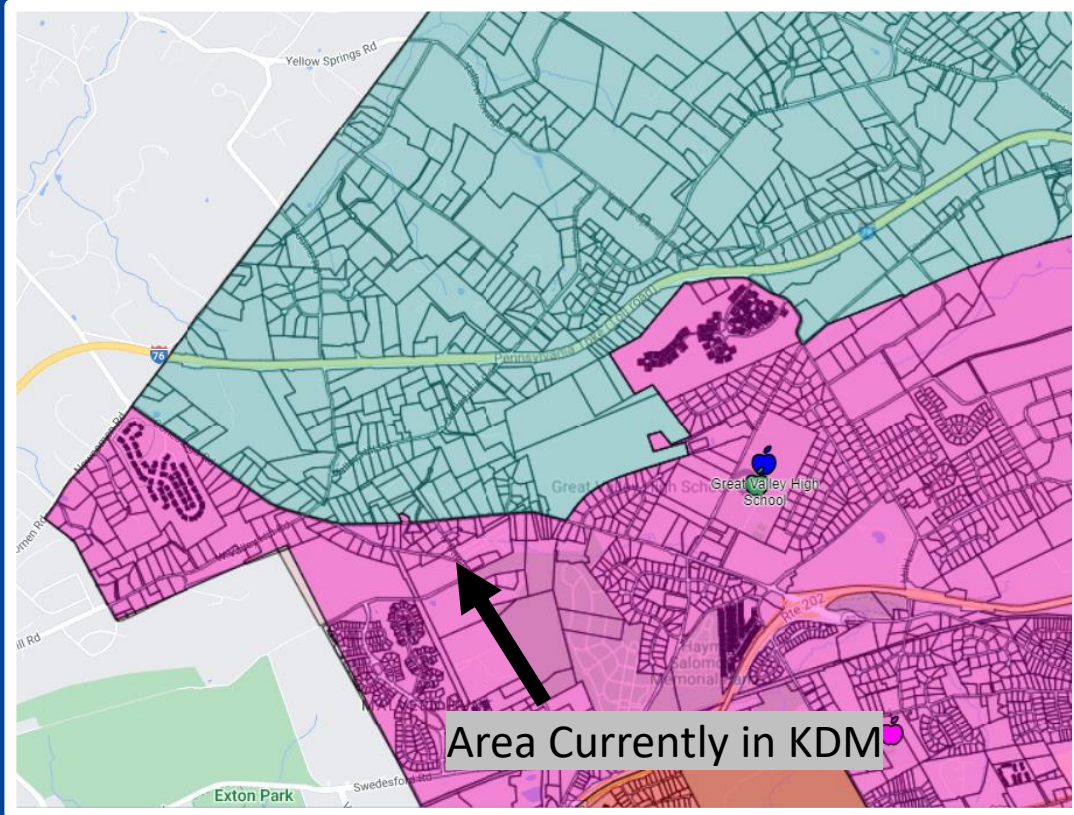


Estimated number of K-4 students for 24-25 = 30

Charlestown Meadow

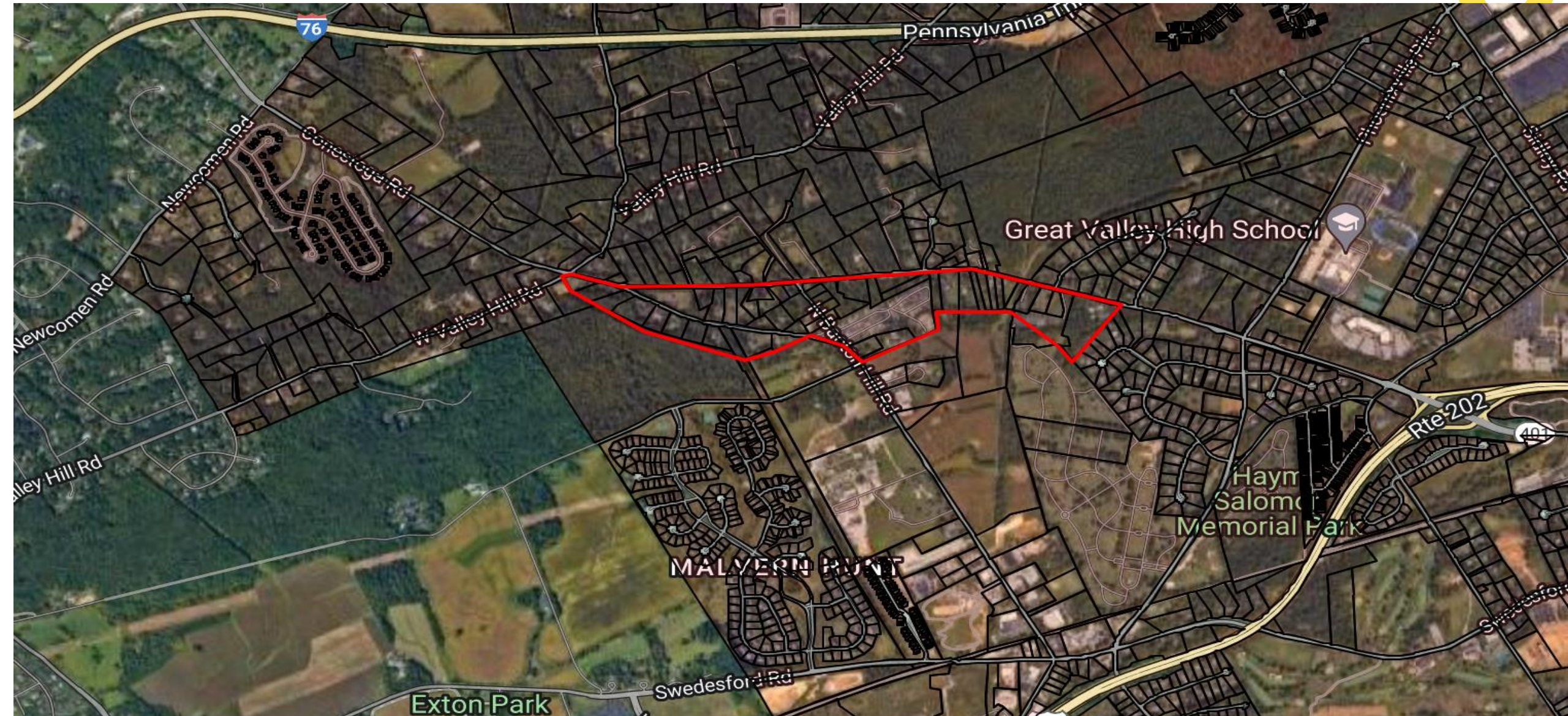


Sections of North Bacton Hill (incl. Spring Valley/401 area) to Charlestown



Estimated number of K-4 students for 24-25 = 45

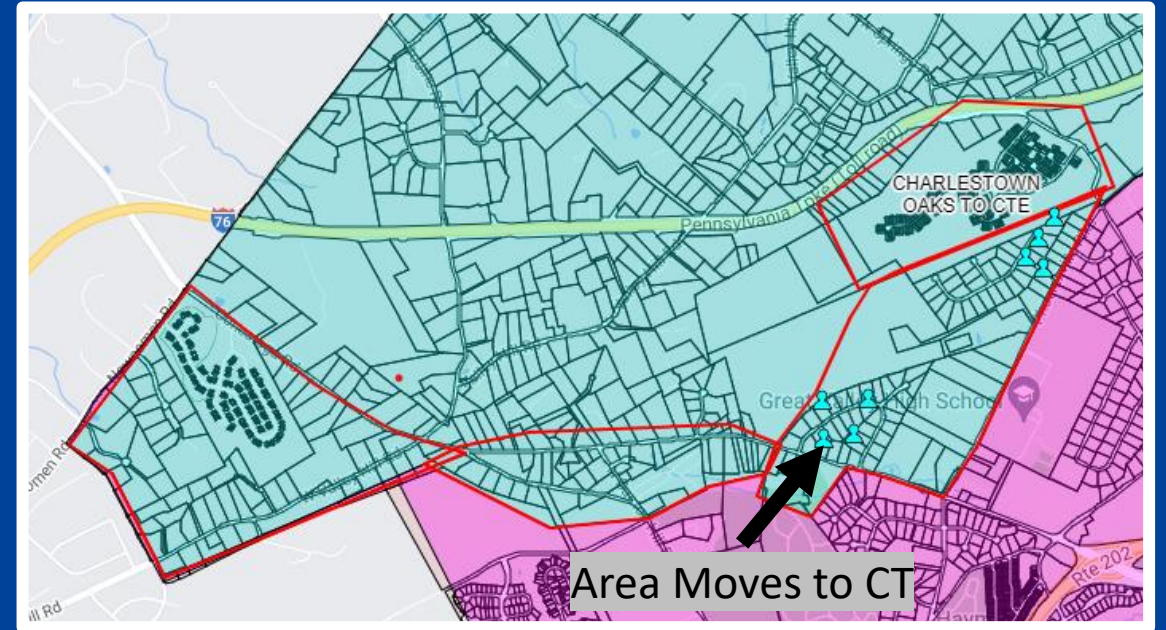
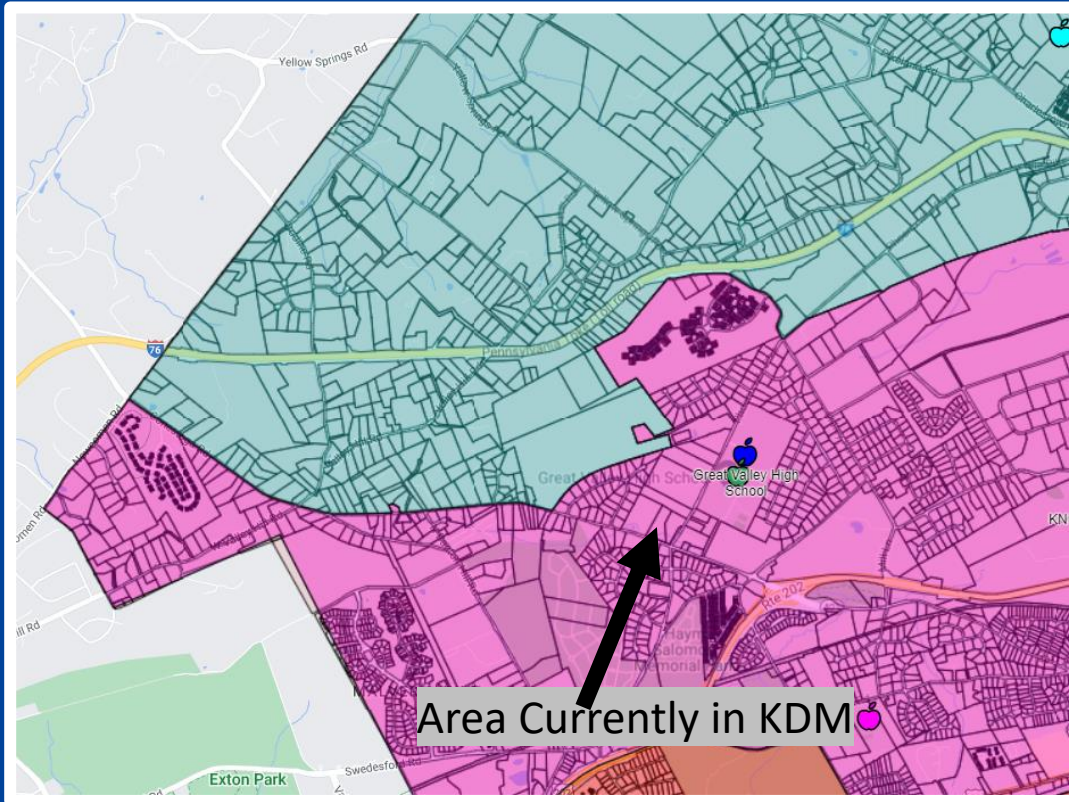
Sections of North Bacton Hill (incl. Spring Valley/ 401 area) to Charlestown



Sections of North Bacton Hill (incl. Spring Valley/ 401 area) to Charlestown



Move Westbound Phoenixville Pike, Westbound 401, James Thomas Rd, Aston Rd, & Hillbrook Cr. to Charlestown

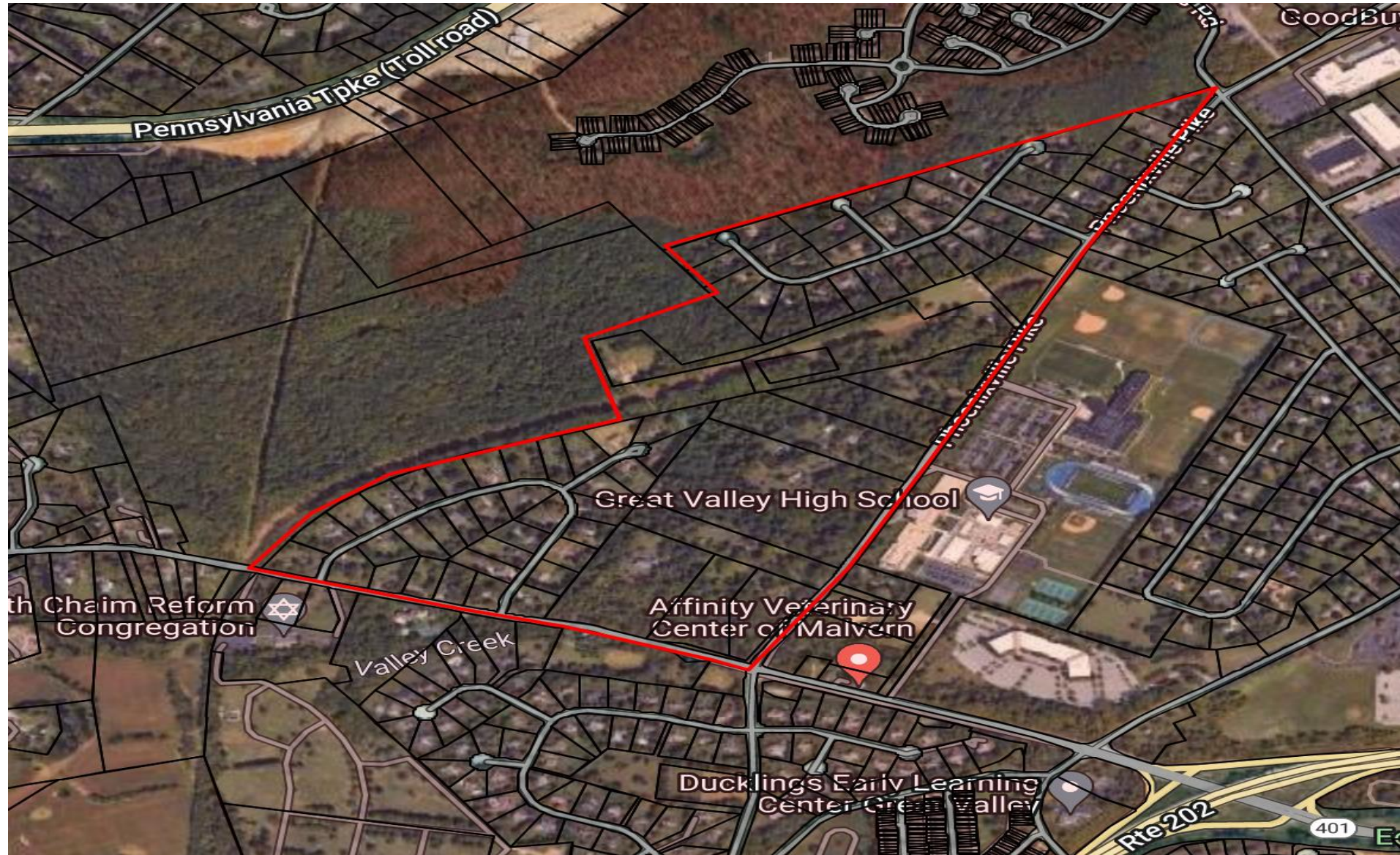


Estimated number of K-4 students for 24-25 = 11

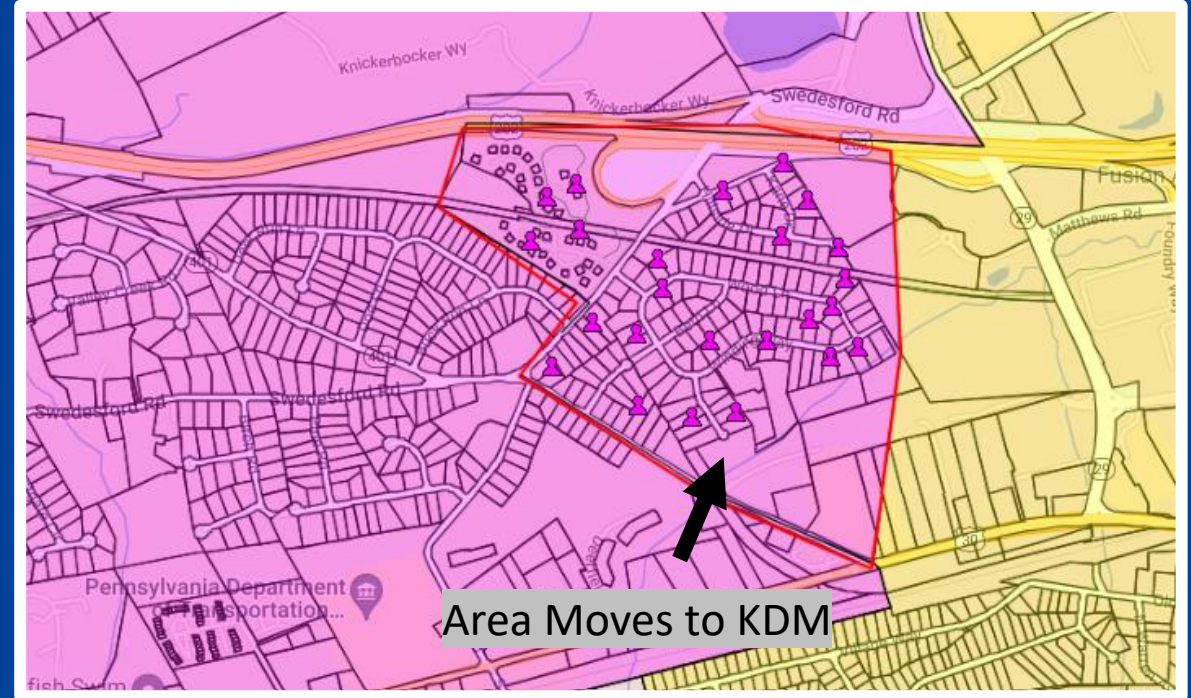
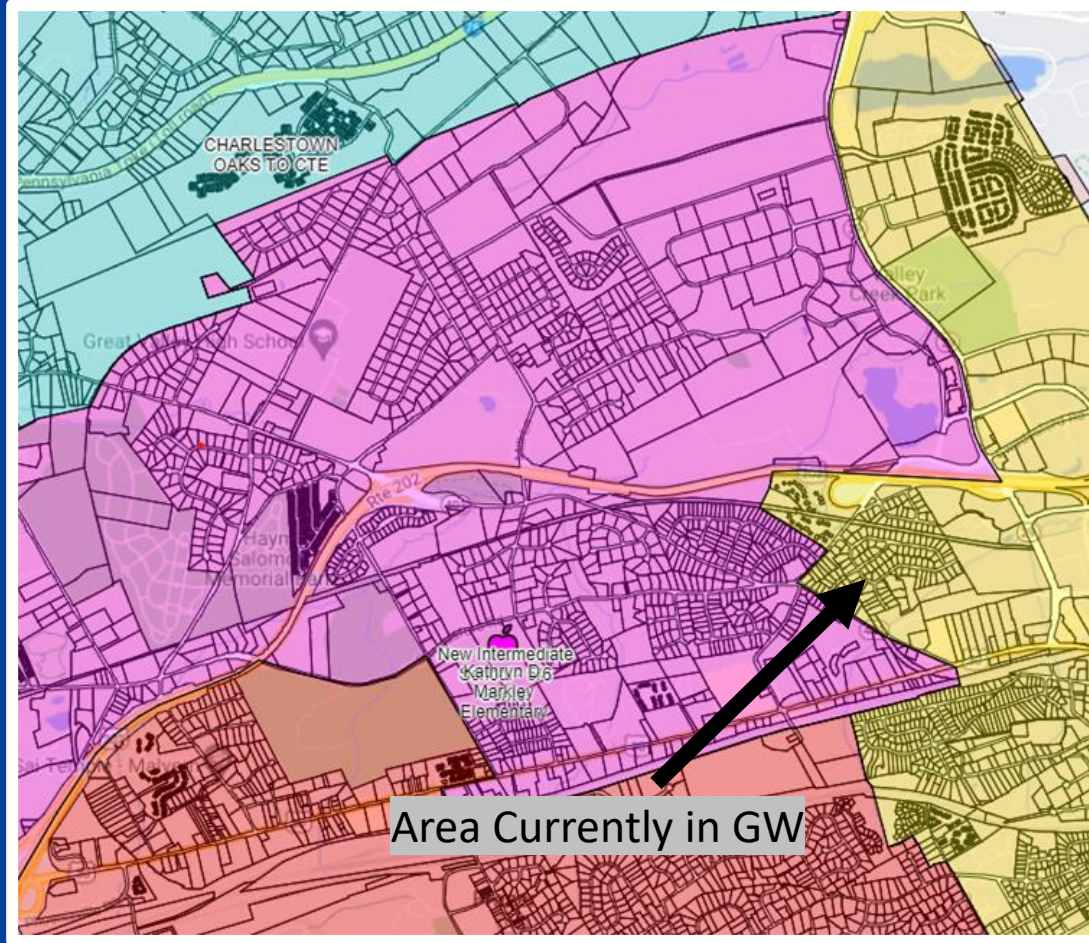
Aston, Phoenixville Pike, Hillbrook, Etc.



Aston, Phoenixville Pike, Hillbrook, Etc.

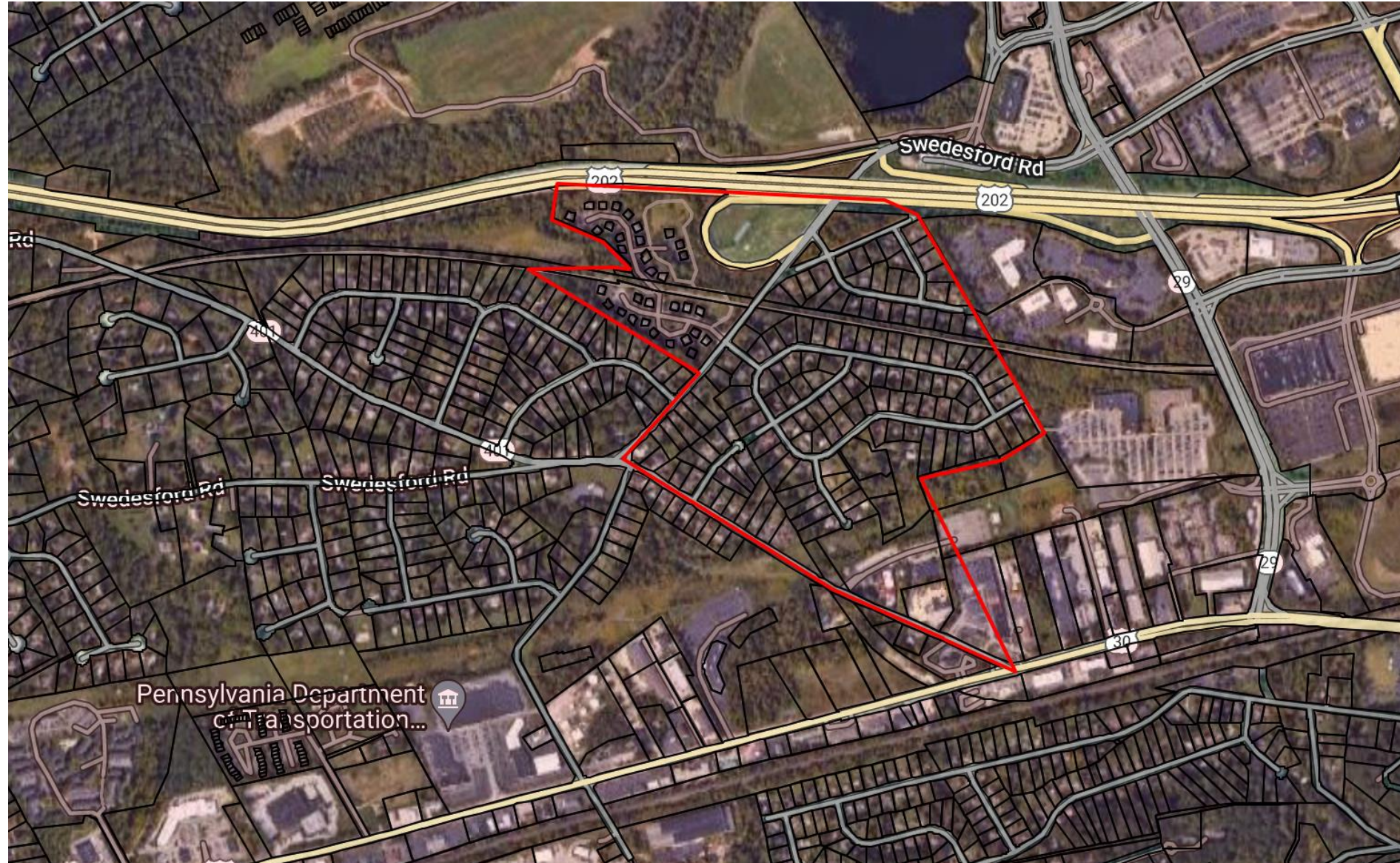


Move Downeast, Hillside, Malin Station, Swedesford (east of 401) to KDM

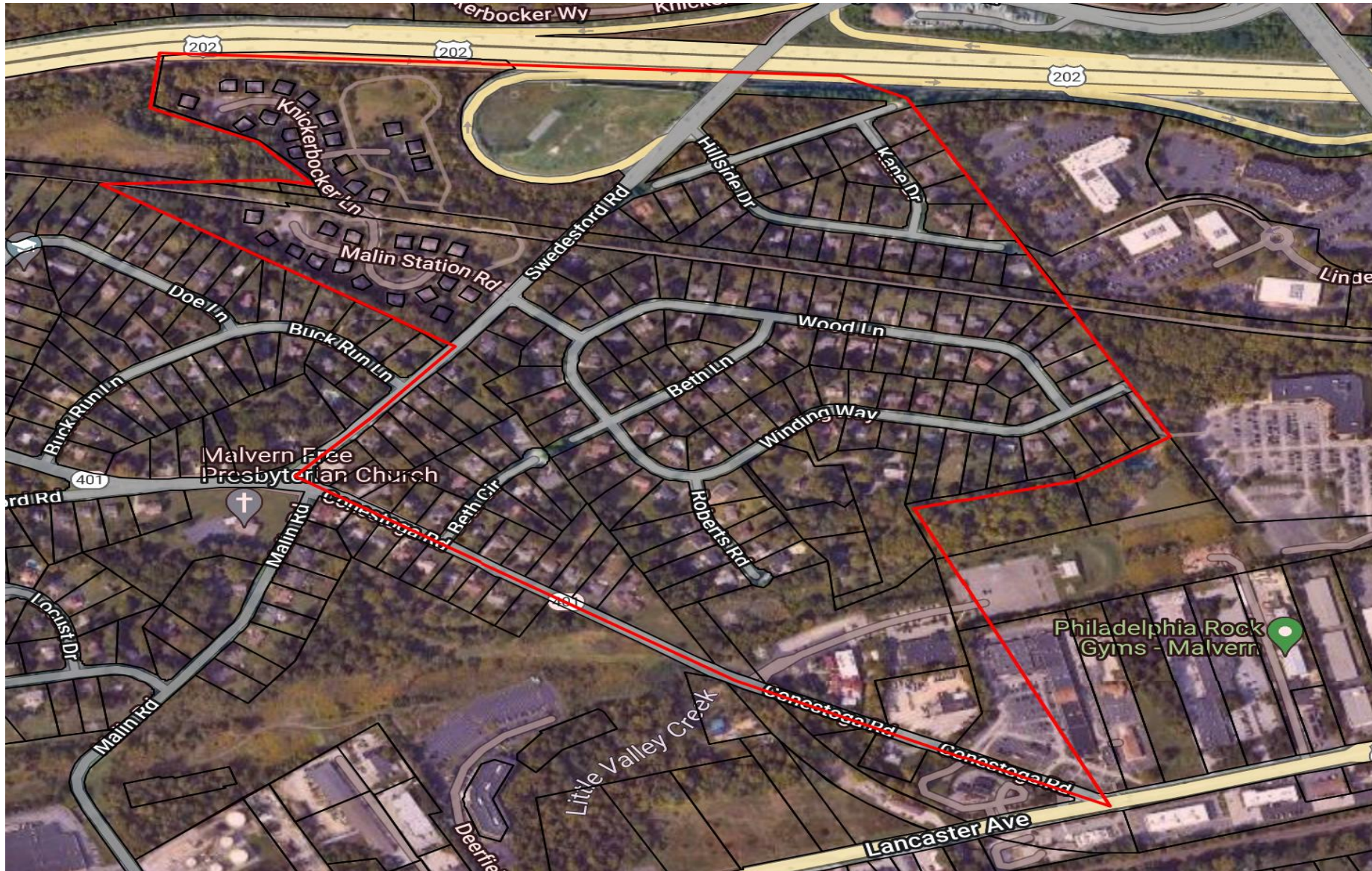


Estimated number of K-4 students for 24-25 = 34

Downeast, Hillside, & Malin Station



Downeast, Hillside, & Malin Station



Option 1A

CTE	
504 Status	%
No	97.22%
Yes	2.78%
Special Ed Status	%
No	87.01%
Yes	12.99%
ESL ELL Status	%
No	89.79%
Yes	10.21%
Free and Reduced	%
No	82.13%
Yes	17.87%
Race	%
Asian	26.45%
Black or African American	1.16%
Hispanic	12.53%
Multi-Racial	6.03%
White	53.83%

KDM	
504 Status	%
No	97.50%
Yes	2.50%
Special Ed Status	%
No	84.32%
Yes	15.68%
ESL ELL Status	%
No	87.50%
Yes	12.50%
Free and Reduced	%
No	76.82%
Yes	23.18%
Race	%
Asian	38.18%
Black or African American	2.95%
Hispanic	15.00%
Multi-Racial	4.77%
Native Hawaiian or Other Pacific Islander	0.23%
White	38.86%

STE	
504 Status	%
No	97.85%
Yes	2.15%
Special Ed Status	%
No	85.19%
Yes	14.81%
ESL ELL Status	%
No	84.55%
Yes	15.45%
Free and Reduced	%
No	75.11%
Yes	24.89%
Race	%
Asian	22.32%
Black or African American	2.36%
Hispanic	17.81%
Multi-Racial	6.22%
Native Hawaiian or Other Pacific Islander	0.21%
White	51.07%

GWE	
504 Status	%
No	96.92%
Yes	3.08%
Special Ed Status	%
No	84.39%
Yes	15.61%
ESL ELL Status	%
No	92.49%
Yes	7.51%
Free and Reduced	%
No	84.20%
Yes	15.80%
Race	%
Asian	30.25%
Black or African American	2.70%
Hispanic	7.51%
Multi-Racial	5.20%
White	54.34%

Option 1A: Multiple Neighborhoods



Revises Option 1 based on board/community feedback



More fully utilizes Charlestown



Shorter or same travel times for involved neighborhoods



Provides good balance across all schools



No separation of neighborhoods



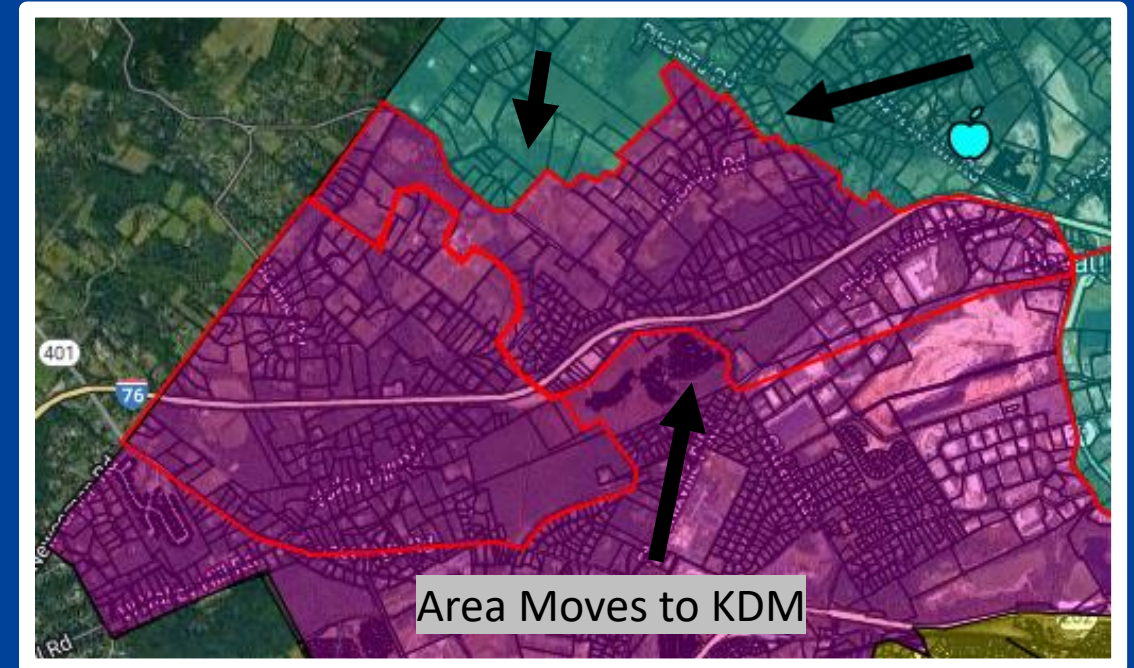
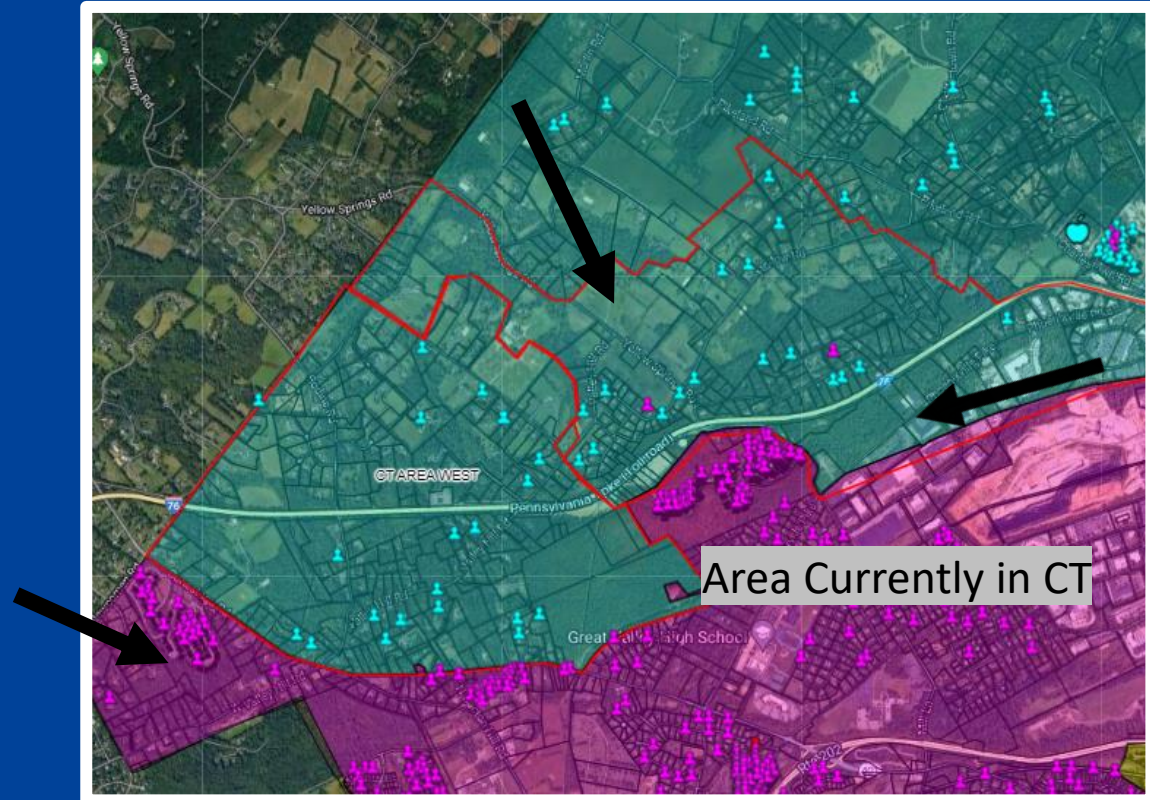
Involves 179 students



Option 3A: Move all of Atwater, 401 South of Mill, & North of 401 to Turnpike

- Places Charlestown over capacity
- Requires moving children from Charlestown
 - North of 401 to turnpike from Charlestown to KDM (45 students)
 - South of 401 to Mill from KDM to General Wayne (49 students)
 - Increases travel time for both involved areas
- Involves changes for 273 students

Move North of 401 to KDM



Estimated number of K-4 students for 24-25 = 45

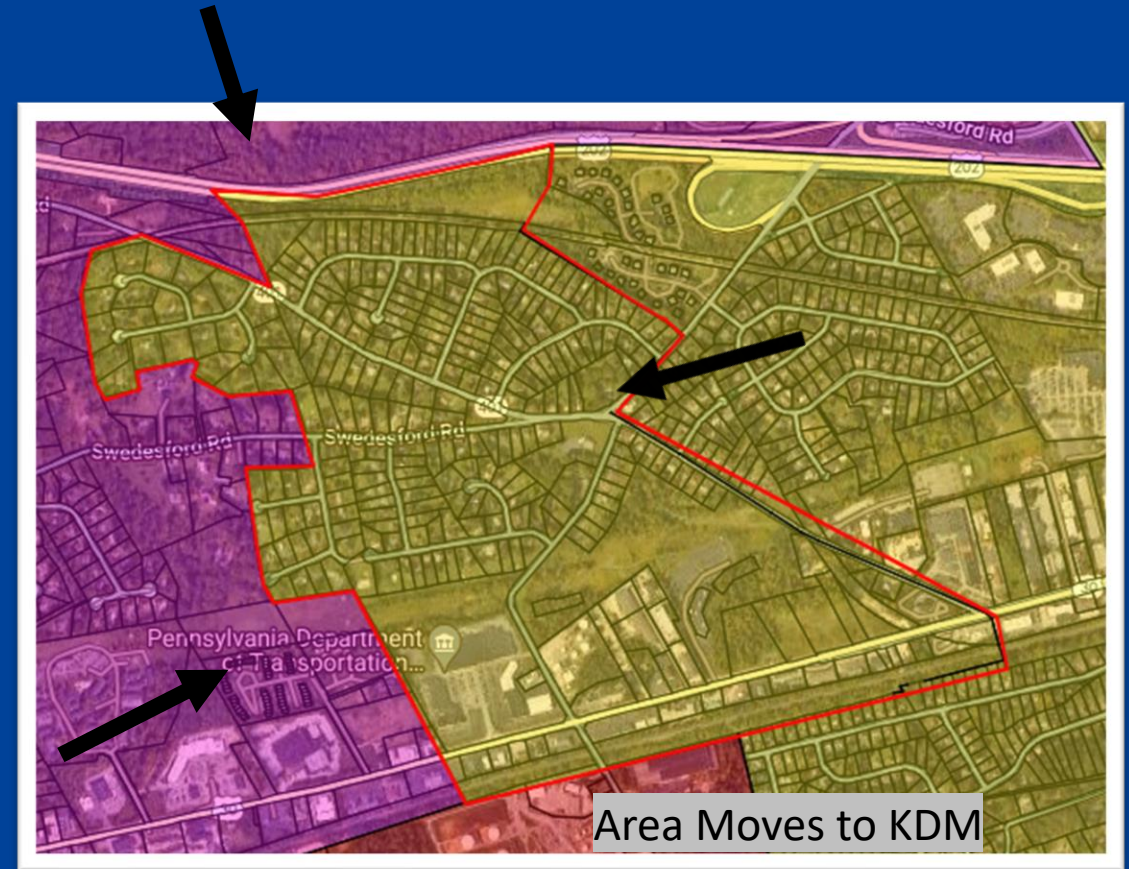
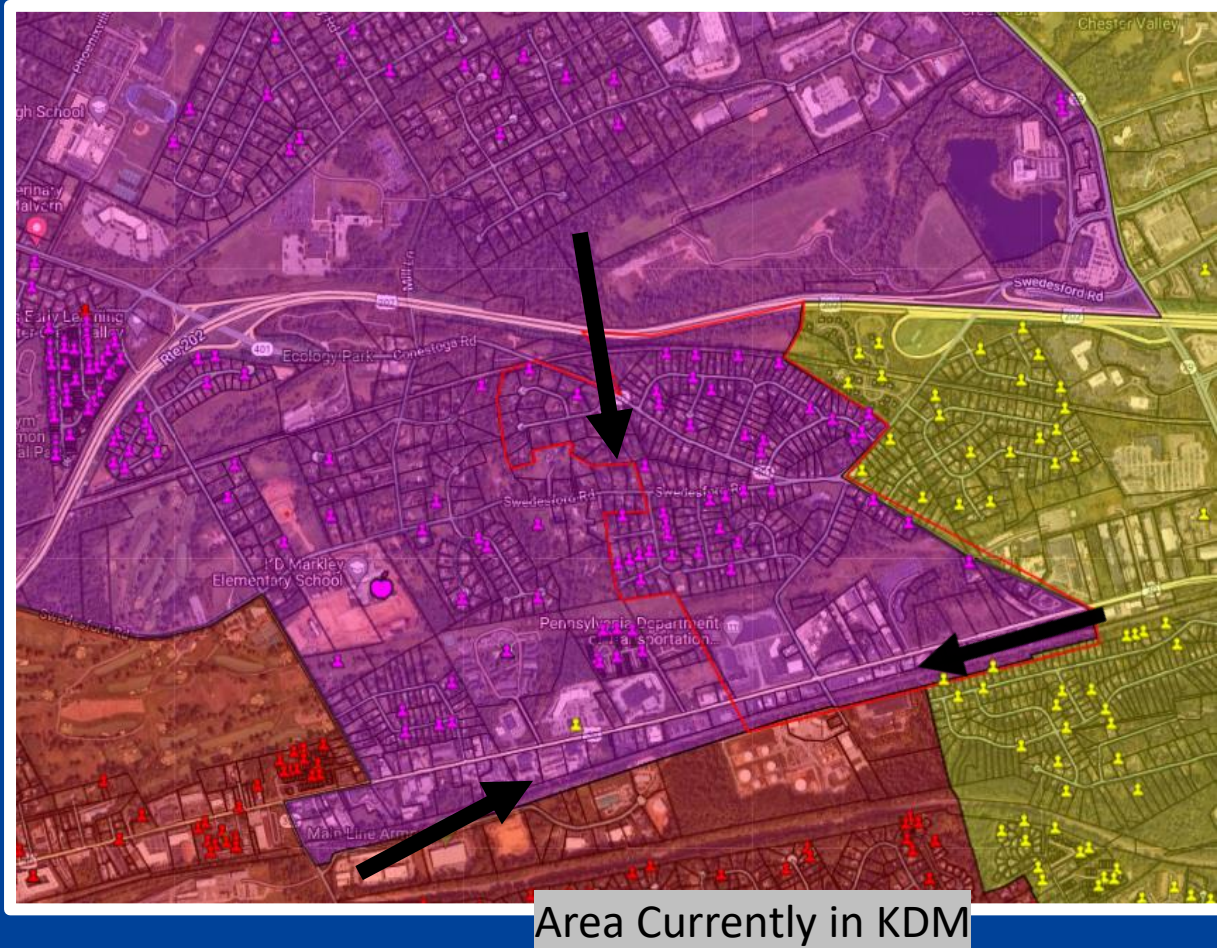
This aerial map shows the DeWitt area in Hamilton County, New York. A red outline delineates the DeWitt School District boundary. Key features include:

- Highways:** I-190 (Troy to Albany), I-90 (Albany to Buffalo), and I-84 (Albany to Buffalo) are visible.
- Landmarks:** The Wharton Eschrick Museum is located in the northeast corner. The Natural Lands' Binky Lee Preserve is in the northwest corner.
- Streets:** Major roads like New Scotland Rd, Hill Rd, and various local streets are labeled.
- Geography:** The map shows a mix of urban development and green spaces, with the Hudson River visible in the northwest.

North of 401 to Turnpike (CT to KDM – 45 students)

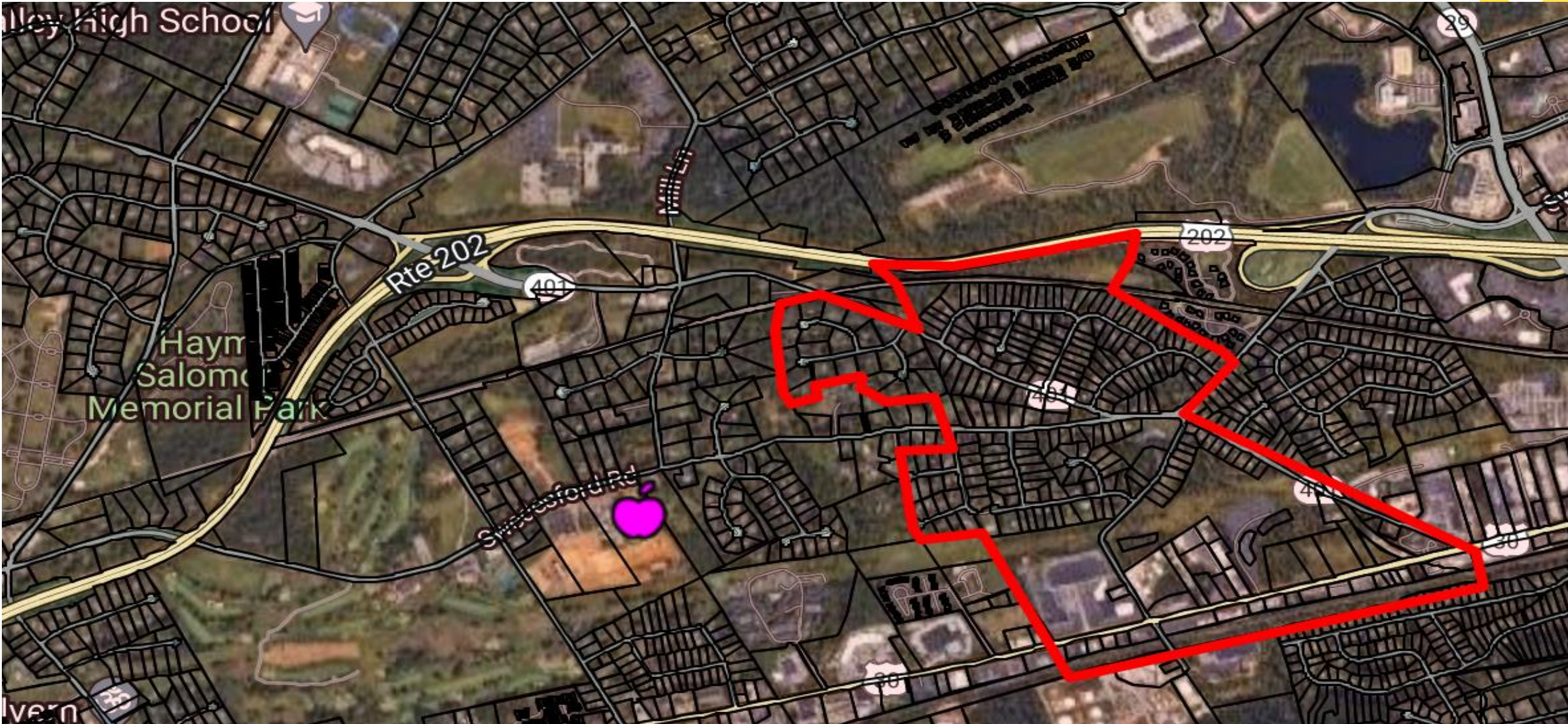


Move South of 401 to Mill from KDM to GW

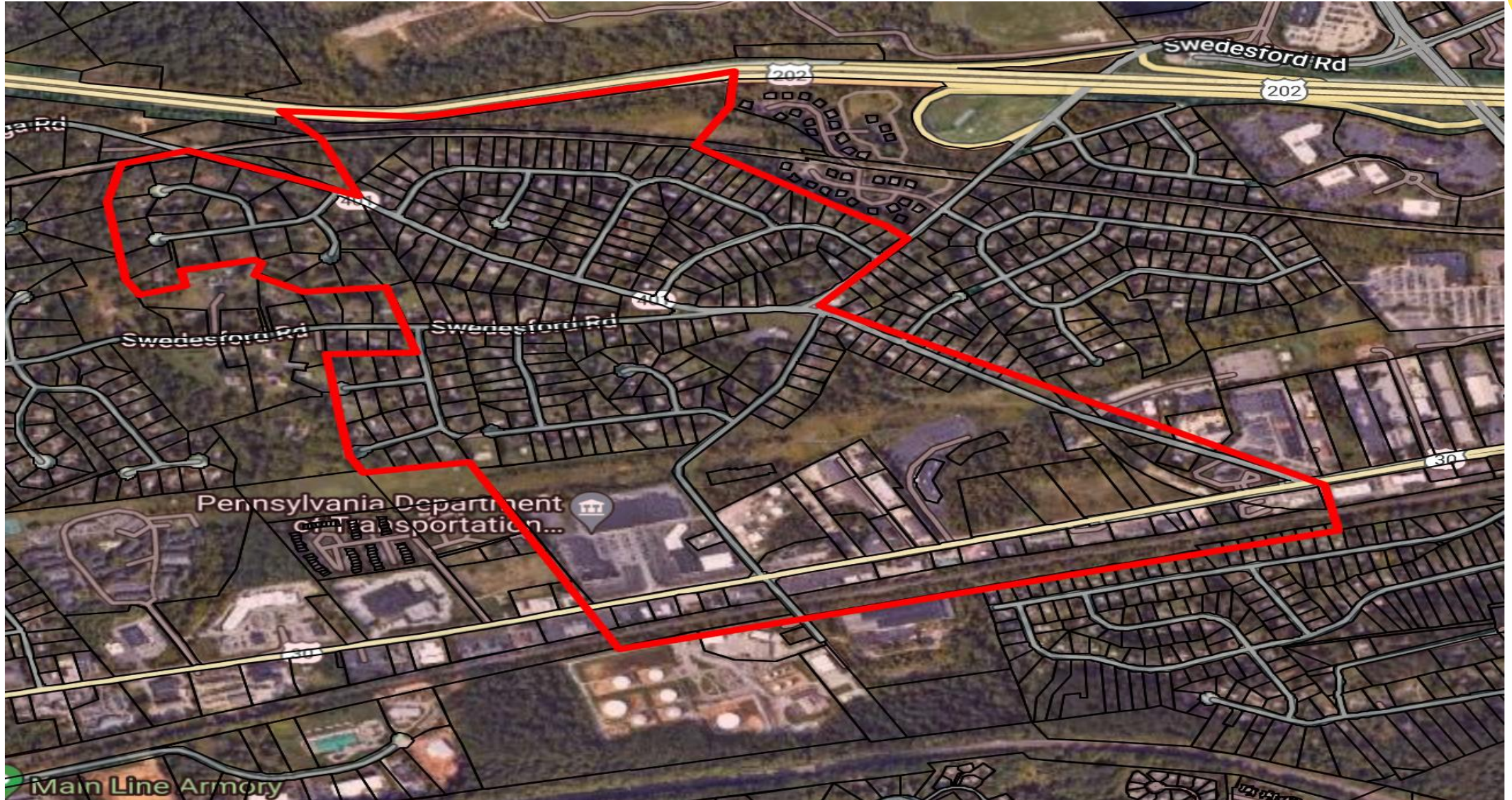


Estimated number of K-4 students for 24-25 = 45

South of 401 to Mill (KDM to GW – 45 students)



South of 401 to Mill (KDM to GW – 45 students)



3A

CTE	
504 Status	%
No	97.36%
Yes	2.64%
Special Ed Status	%
No	89.45%
Yes	10.55%
ESL ELL Status	%
No	94.48%
Yes	5.52%
Free and Reduced	%
No	90.41%
Yes	9.59%
Race	%
Asian	42.93%
Black or African American	2.16%
Hispanic	4.56%
Multi-Racial	5.52%
White	44.84%

KDM	
504 Status	%
No	97.65%
Yes	2.35%
Special Ed Status	%
No	84.27%
Yes	15.73%
ESL ELL Status	%
No	84.63%
Yes	15.37%
Free and Reduced	%
No	74.50%
Yes	25.50%
Race	%
Asian	39.42%
Black or African American	2.17%
Hispanic	18.81%
Multi-Racial	3.80%
White	35.80%

STE	
504 Status	%
No	97.85%
Yes	2.15%
Special Ed Status	%
No	85.19%
Yes	14.81%
ESL ELL Status	%
No	84.55%
Yes	15.45%
Free and Reduced	%
No	75.11%
Yes	24.89%
Race	%
Asian	22.32%
Black or African American	2.36%
Hispanic	17.81%
Multi-Racial	6.22%
Native Hawaiian or Other Pacific Islander	0.21%
White	51.07%

GWE	
504 Status	%
No	96.45%
Yes	3.55%
Special Ed Status	%
No	82.03%
Yes	17.97%
ESL ELL Status	%
No	92.91%
Yes	7.09%
Free and Reduced	%
No	80.61%
Yes	19.39%
Race	%
Asian	10.17%
Black or African American	2.60%
Hispanic	8.51%
Multi-Racial	7.33%
Native Hawaiian or Other Pacific Islander	0.24%
White	71.16%

Option 3A: All Atwater, North & South 401



Revises Option 3 based on board/community feedback



More fully utilizes Charlestown; Shorter travel time for Atwater



Longer travel time and change of school for two other areas



Provides good enrollment balance across all schools



No separation of neighborhoods



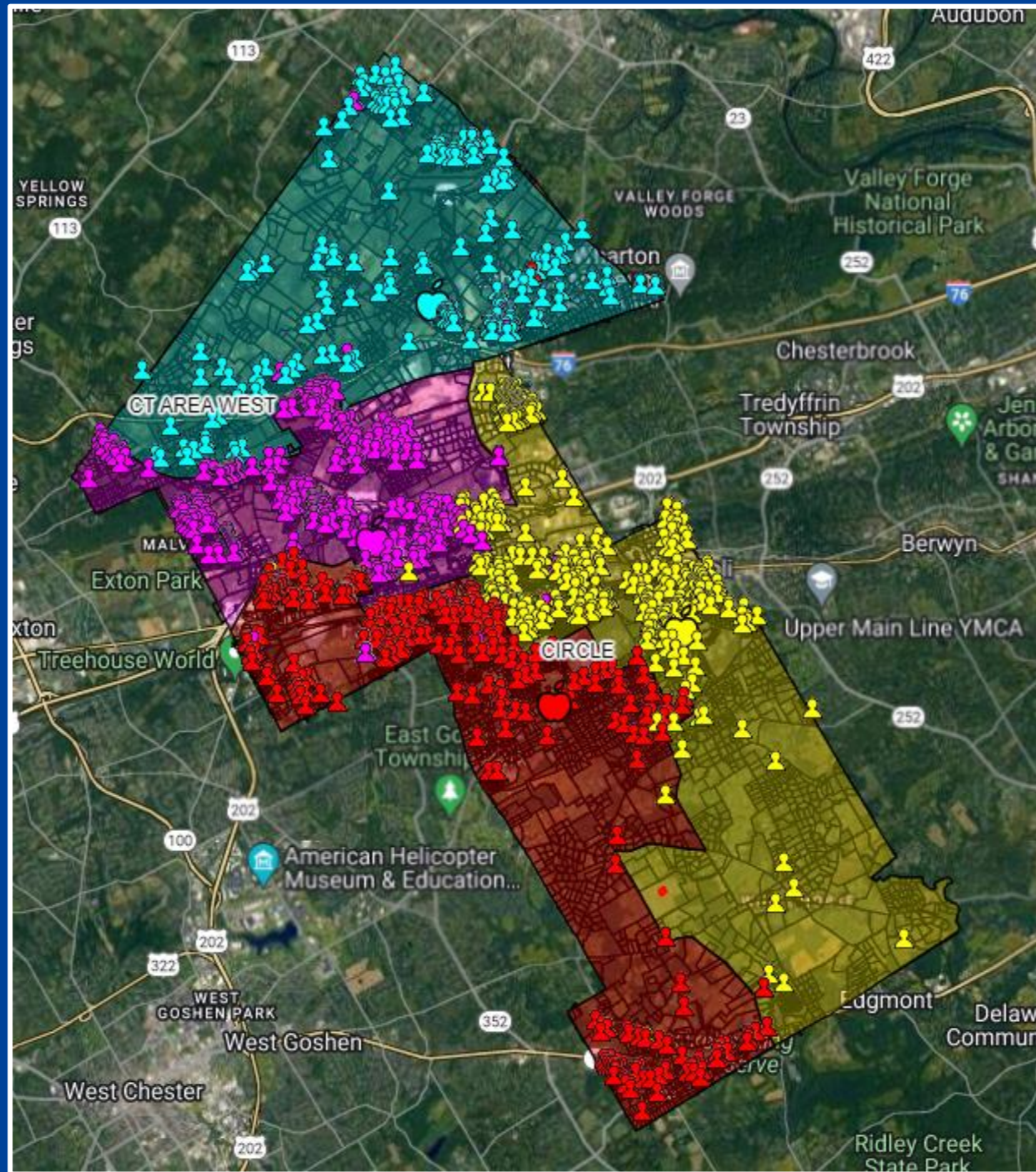
Involves 273 students



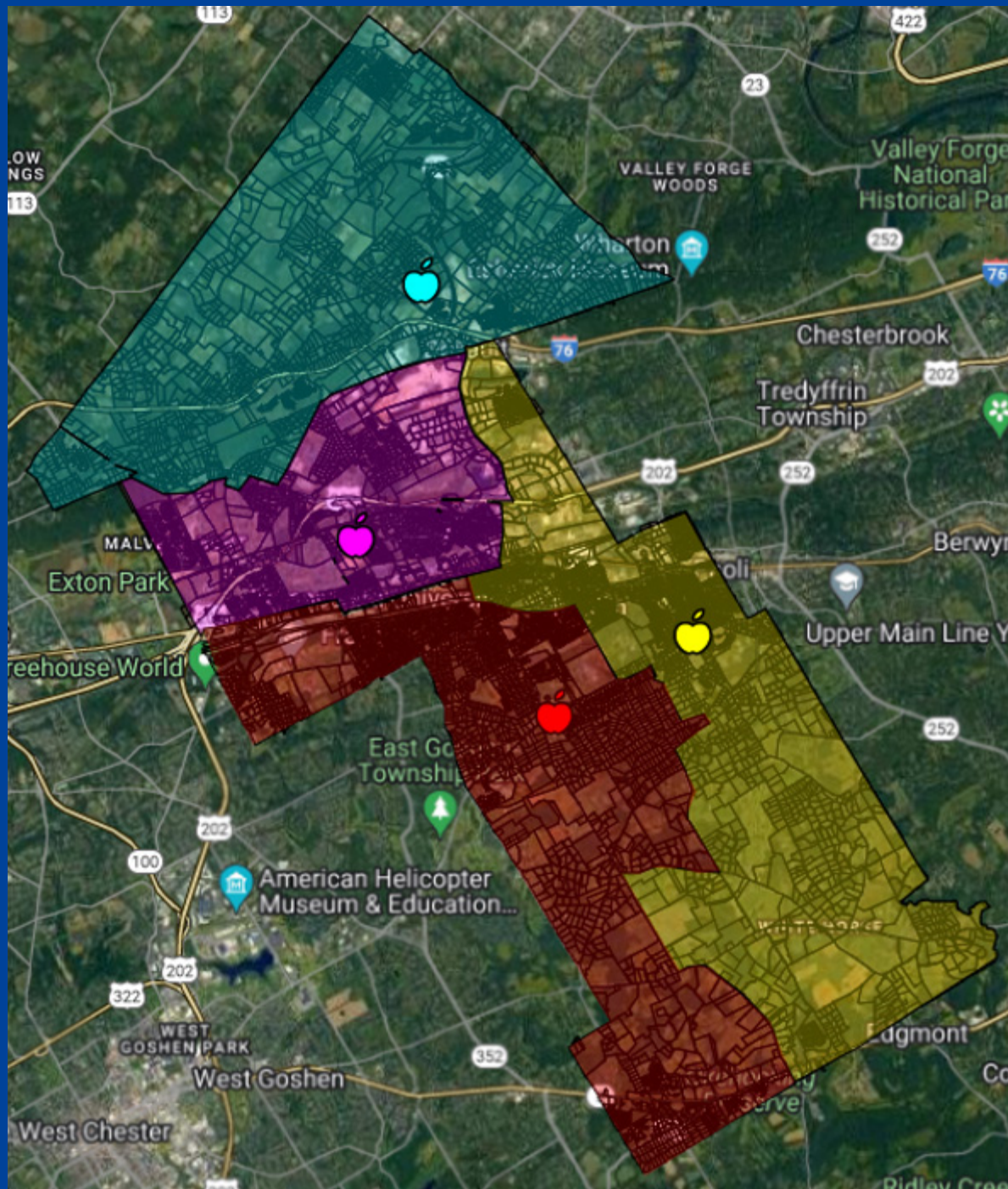
District Boundary Maps by Option



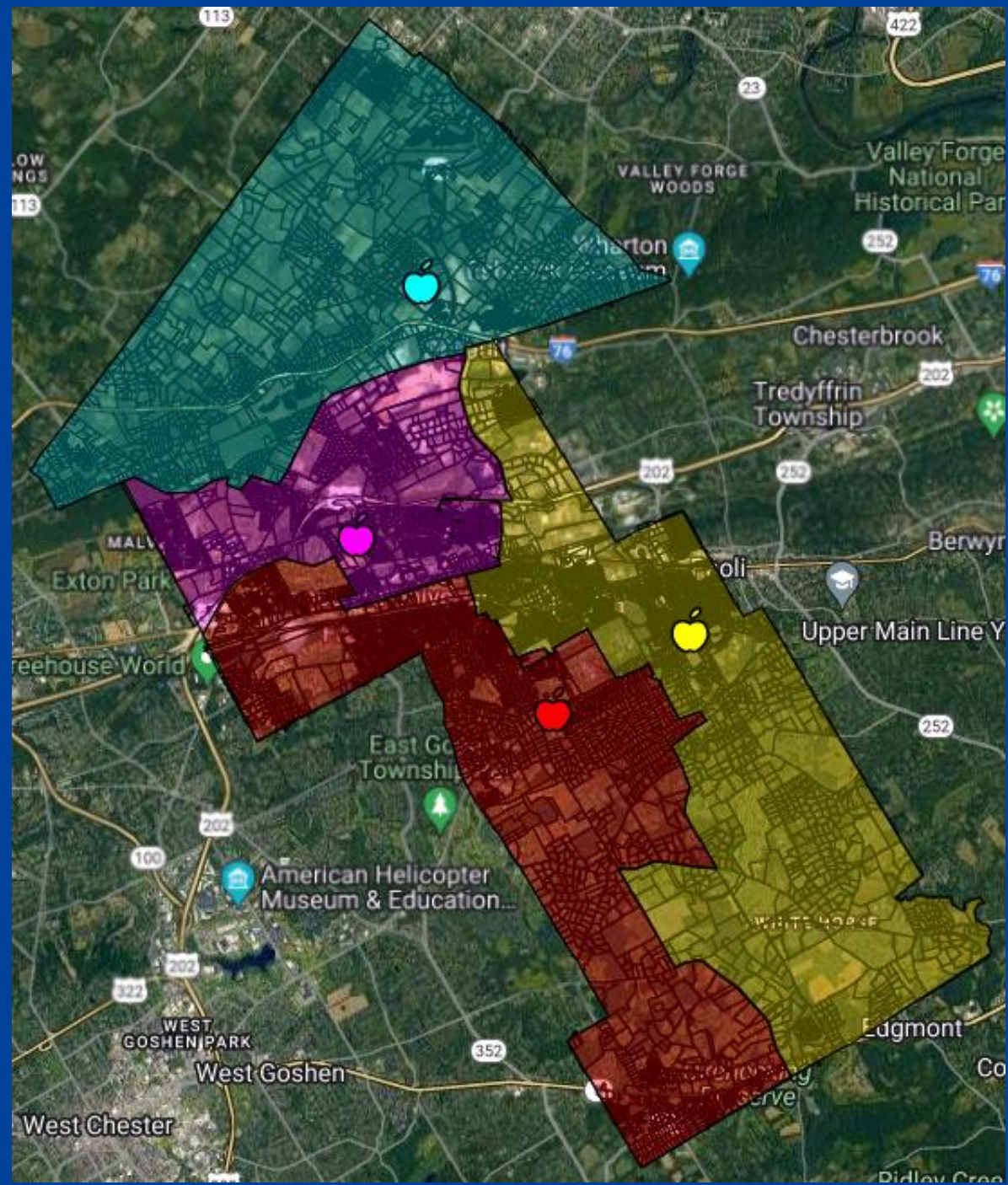
Current

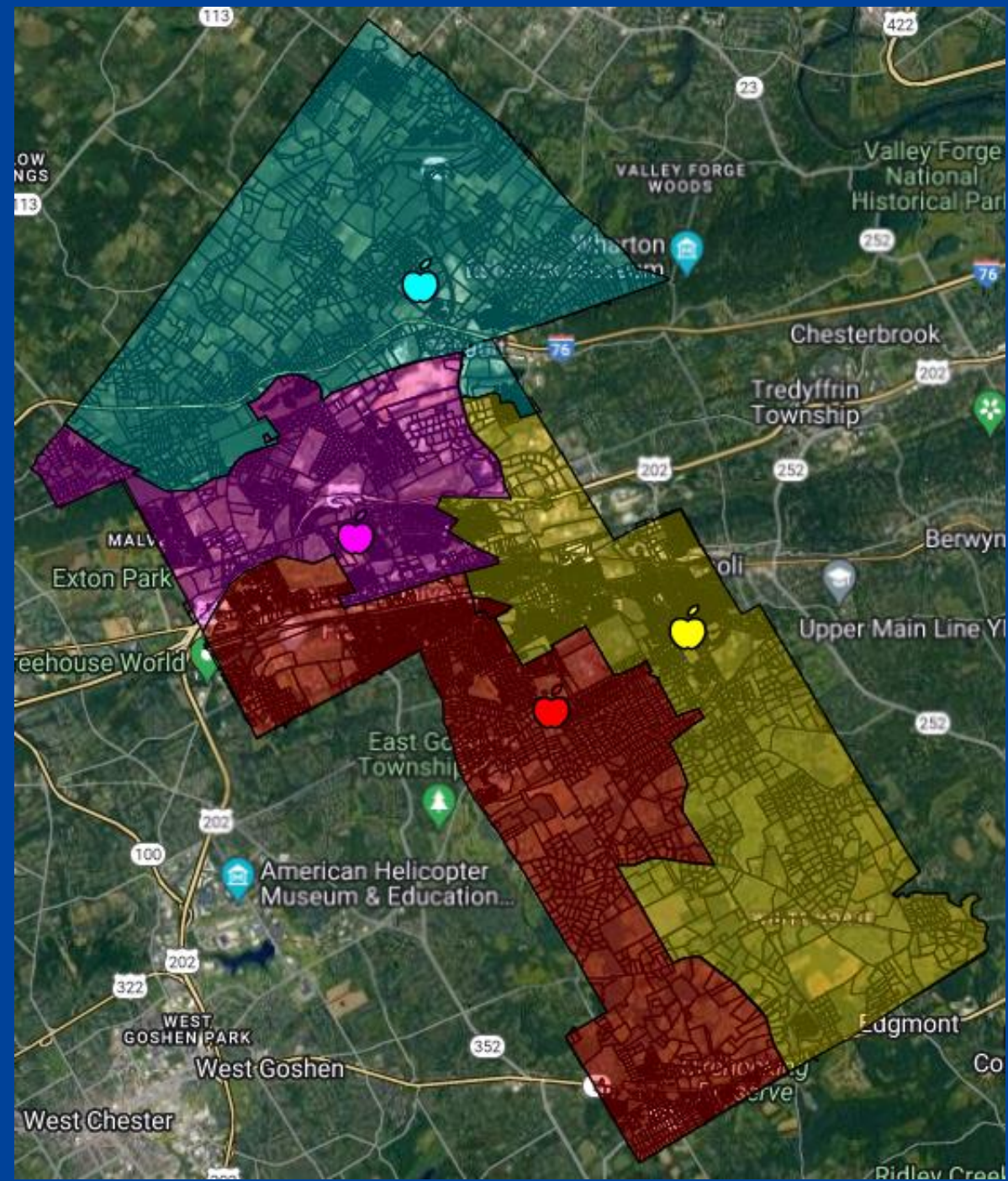


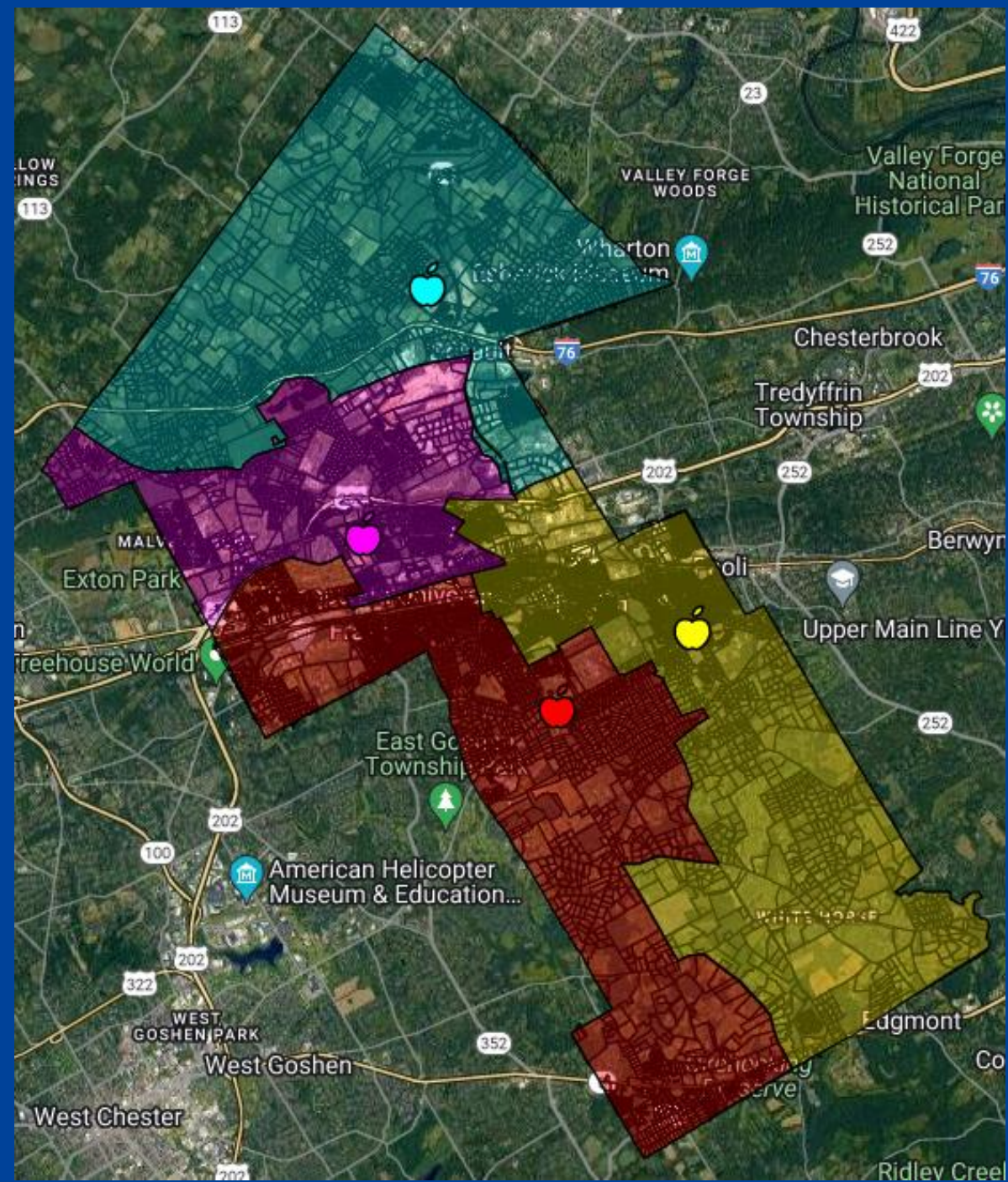
1



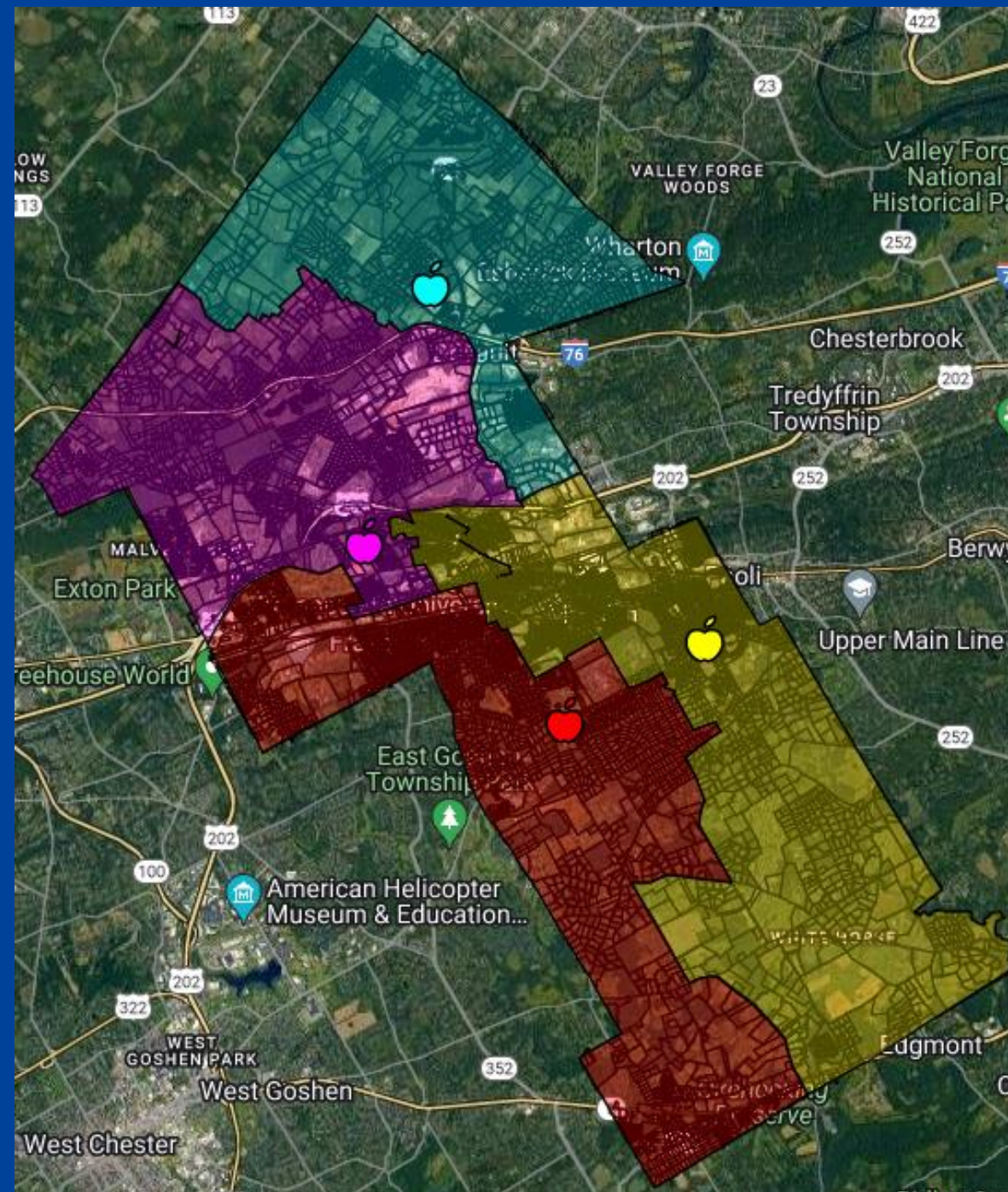
1A







3A



Questions?