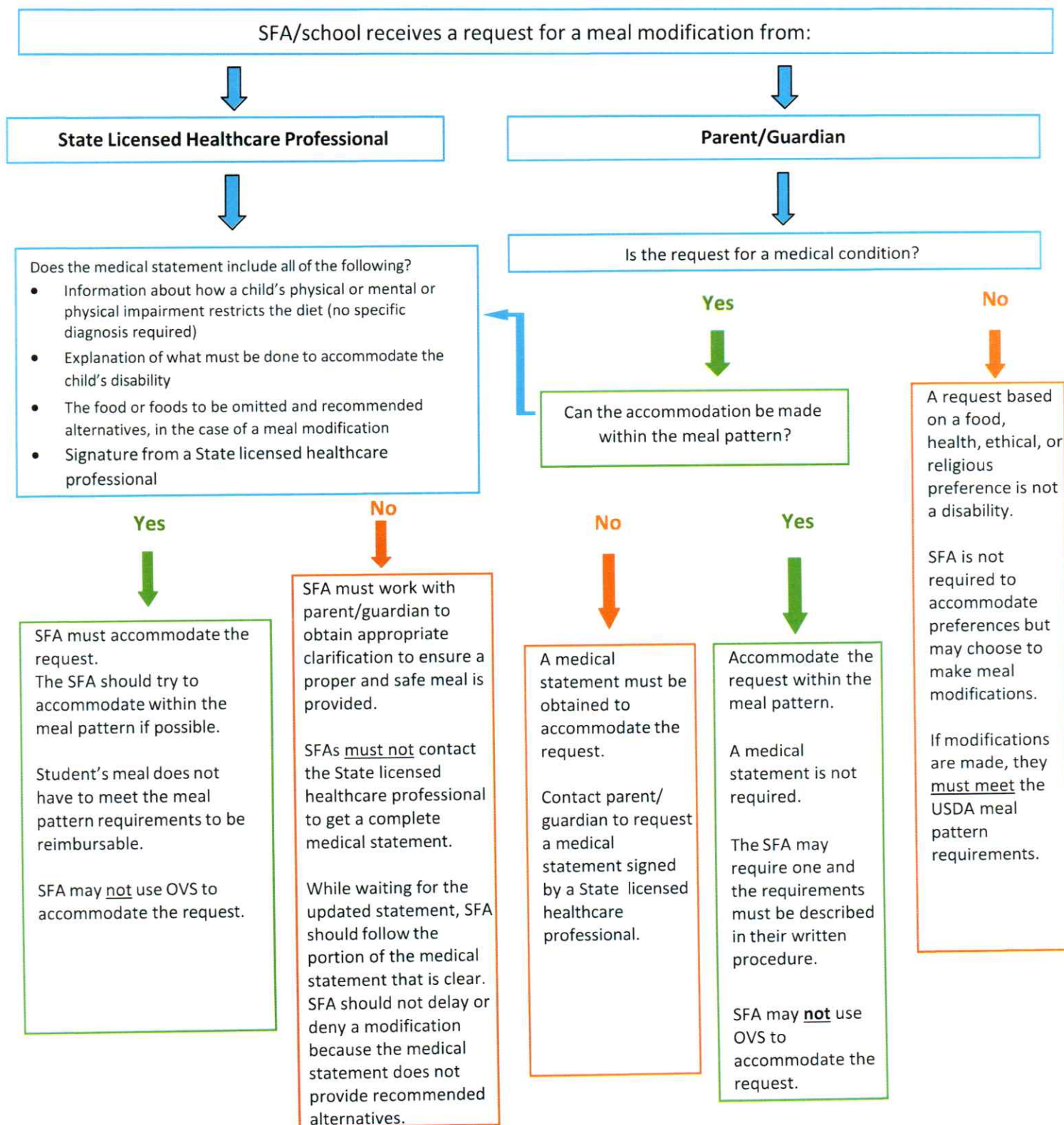


Accommodating Special Dietary Needs in the School Nutrition Program

This flow chart describes the SFA process for handling requests for modifications.



Citations and References:

- [P 40-2017 2017 Edition Disability Manual \(azureedge.us\)](http://azureedge.us)
- [Accommodating Disabilities in the School Meal Programs: Guidance and Q&As | Food and Nutrition Service \(usda.gov\)](http://usda.gov)
- [Modifications to Accommodate Disabilities in the School Meal Programs | Food and Nutrition Service \(usda.gov\)](http://usda.gov)

It is recommended, but not required, that the diet prescription be renewed annually.