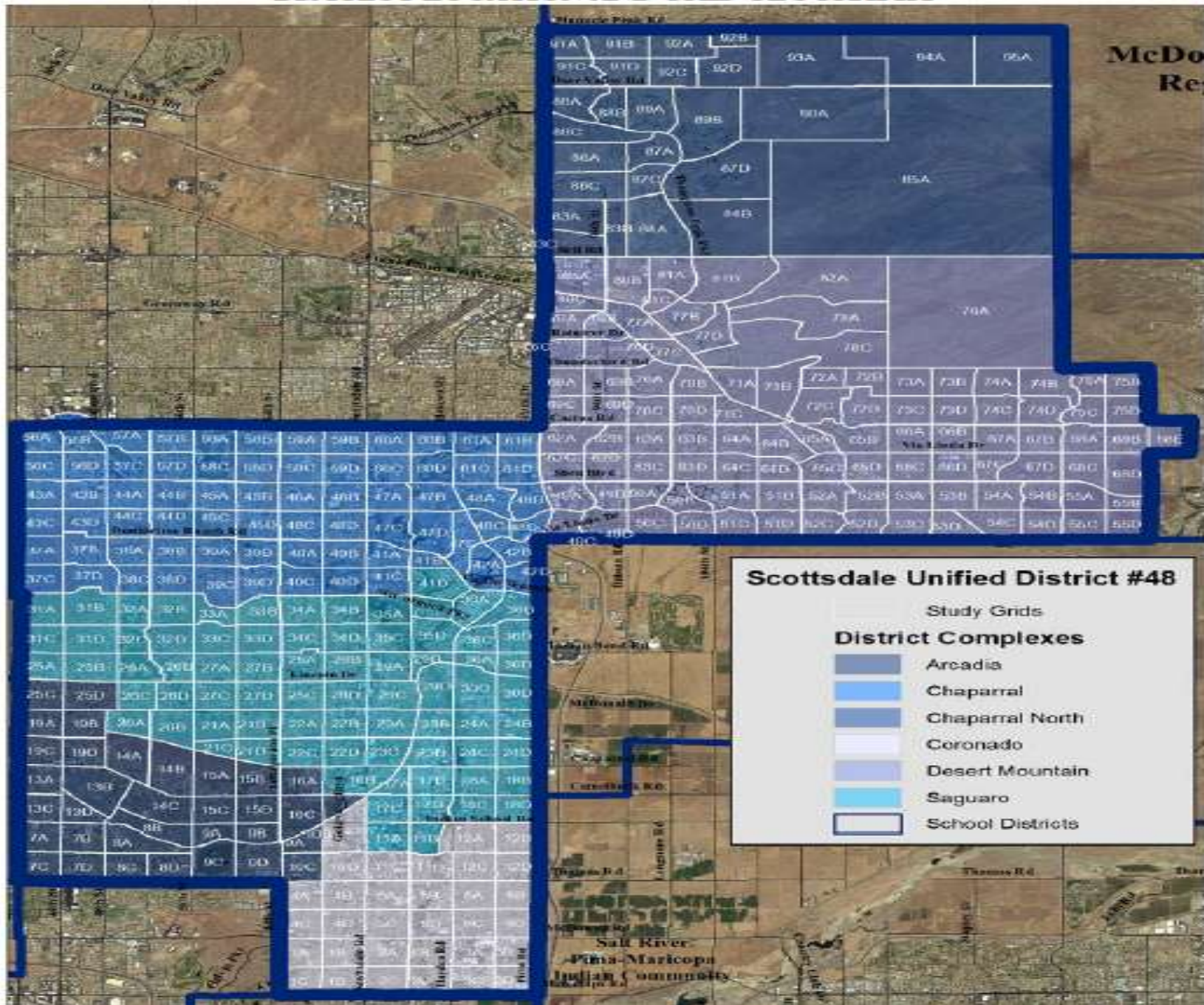


**SCOTTSDALE UNIFIED
SCHOOL DISTRICT
DEMOGRAPHIC AND
ENROLLMENT ANALYSIS**

SUSD Governing Board Meeting

09 OCTOBER 2012

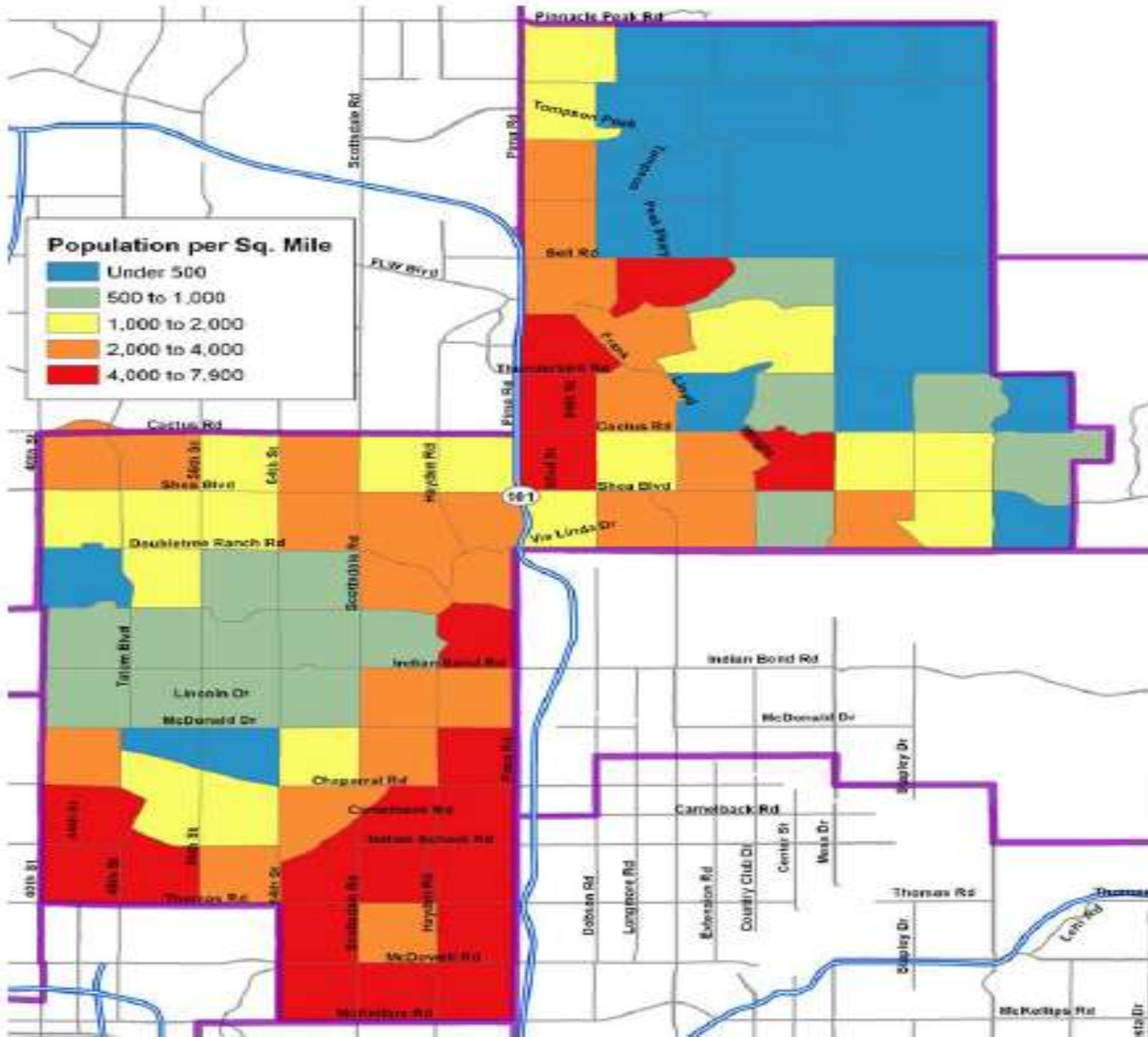
DISTRICT LOCATION AND GRID GEOGRAPHY



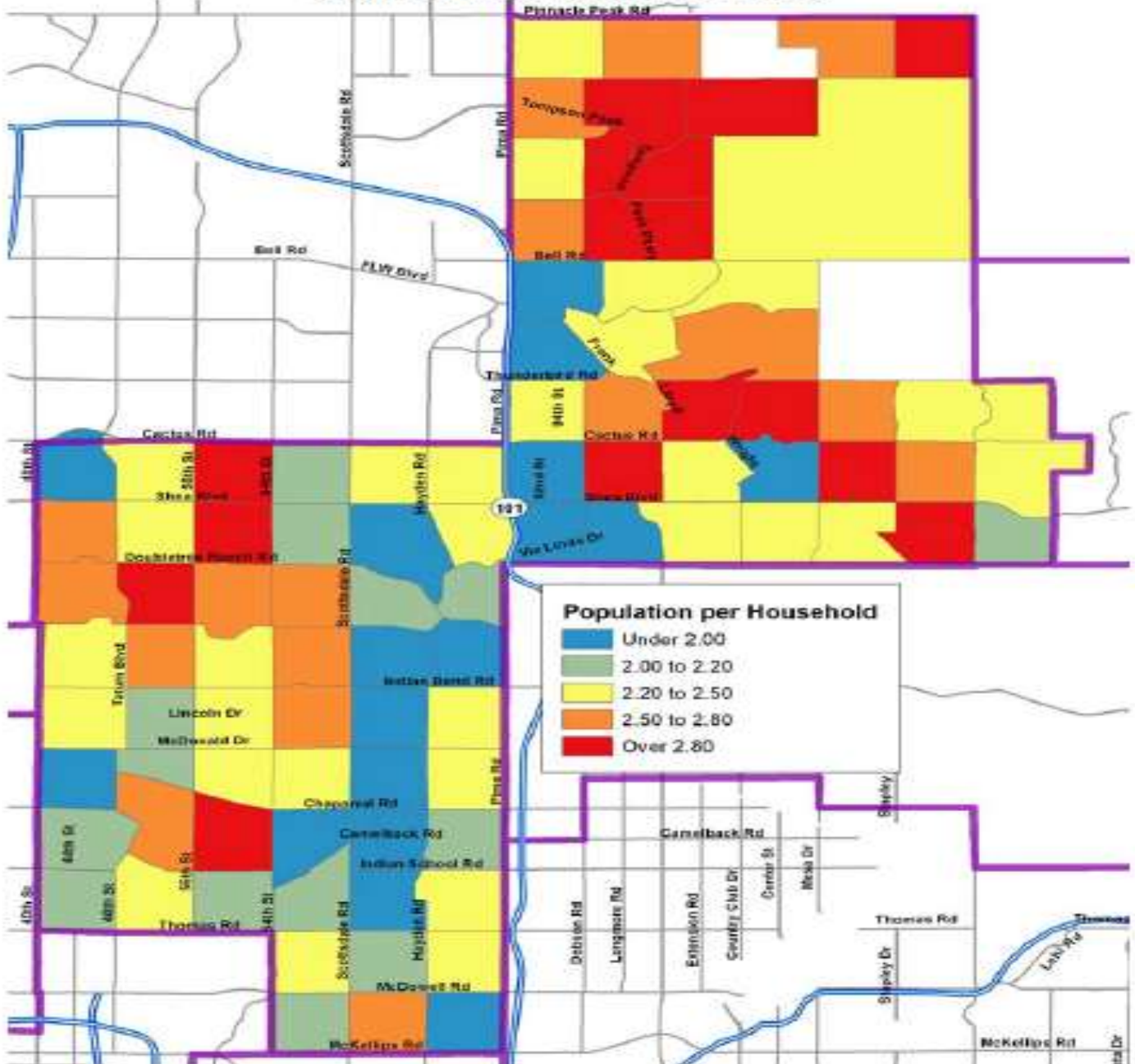
Key findings of the 2011/12 Demographic and Enrollment Analysis update

- o The Demographic and Enrollment Analysis incorporates the results of the 2010 Census
- o Enrollment in the Scottsdale Unified School District has remained virtually the same over the past decade
- o The most striking sign of the demographic alterations taking place in the District can be discerned from the fact that the number of housing units increased by 11,000 between 2000 and 2010, while the total population during that period only increased by 750 persons to 220,818.

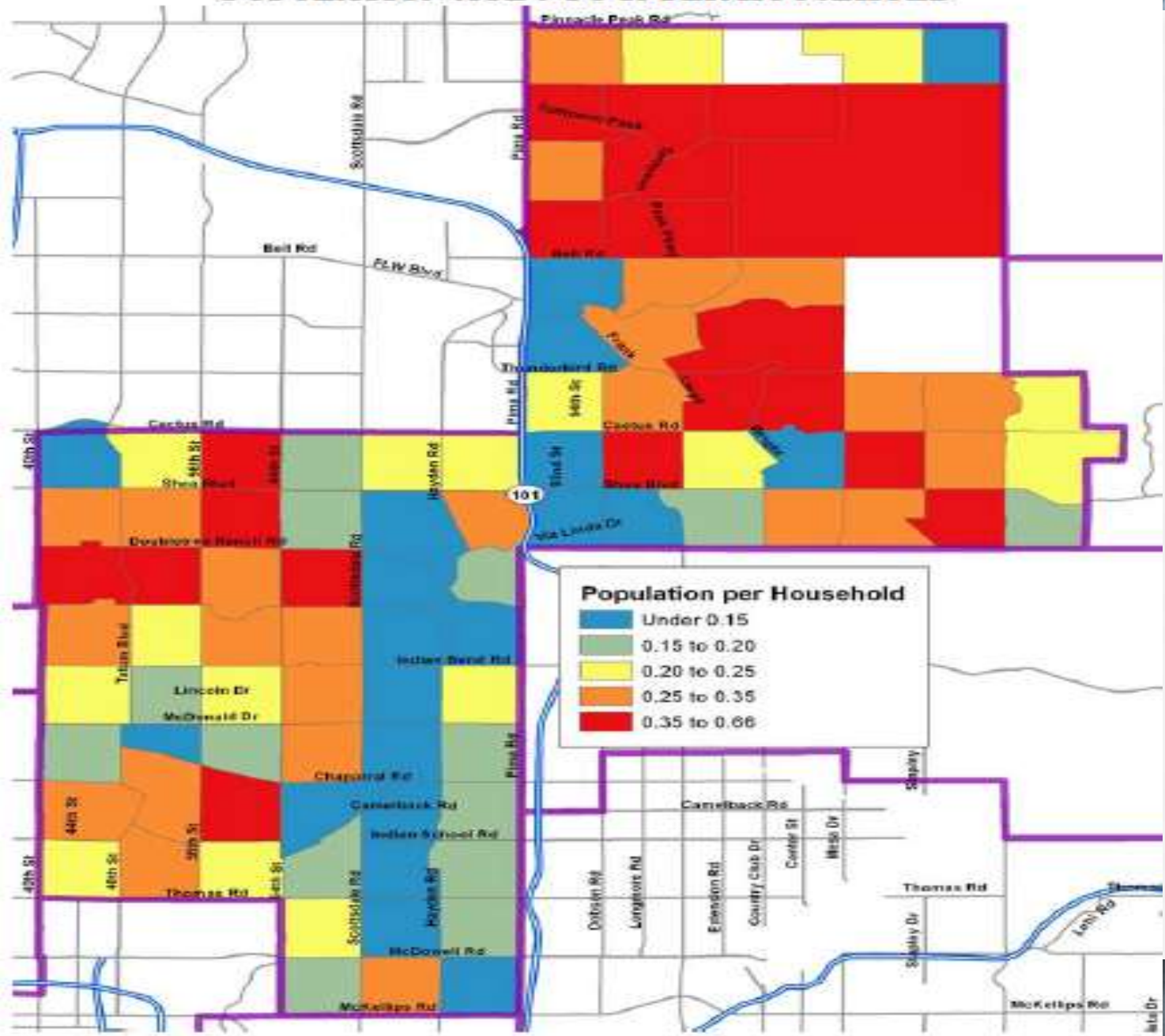
POPULATION DENSITY



POPULATION PER HOUSEHOLD

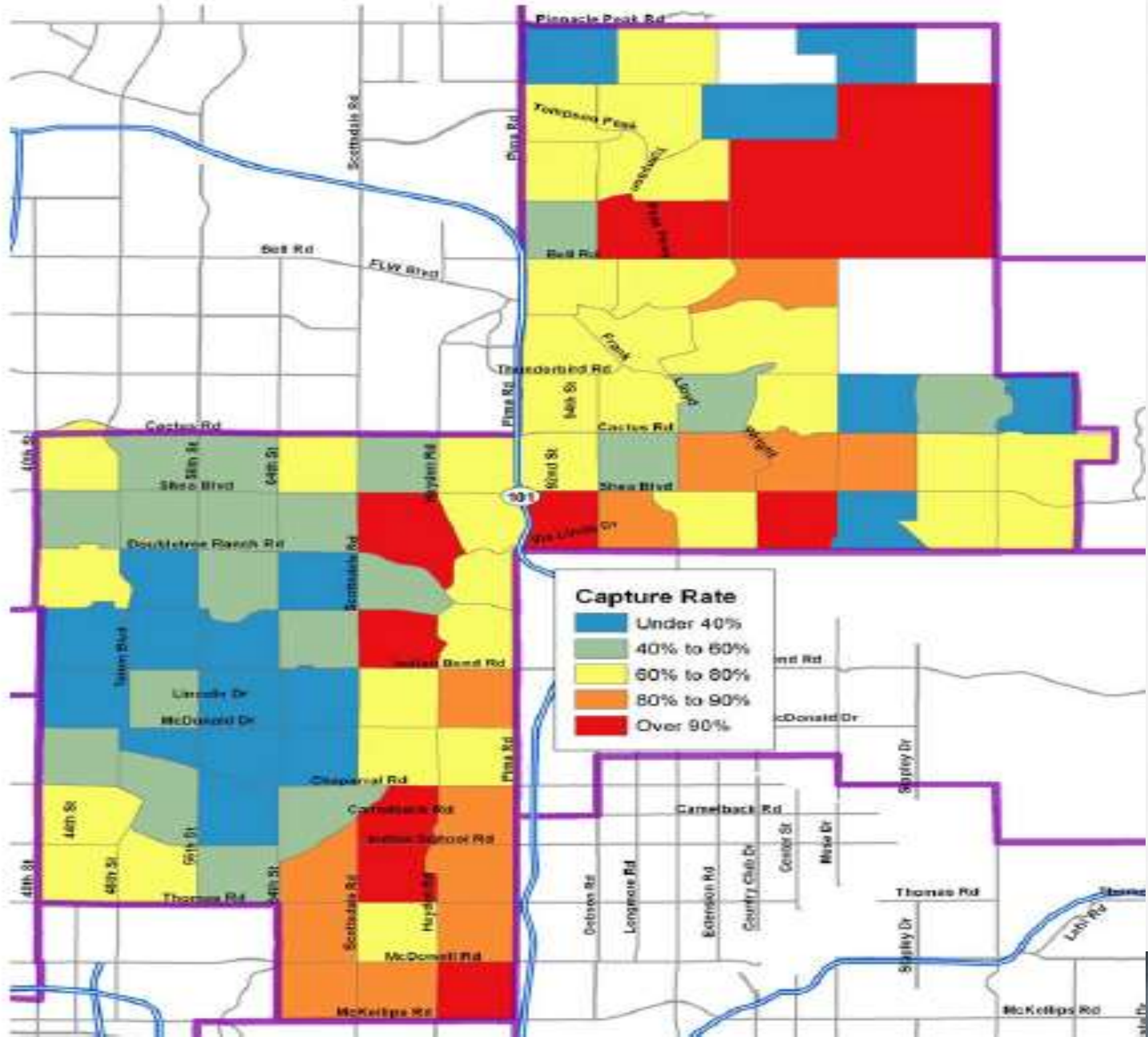


POPULATION AGE 5 TO 13 PER HOUSEHOLD

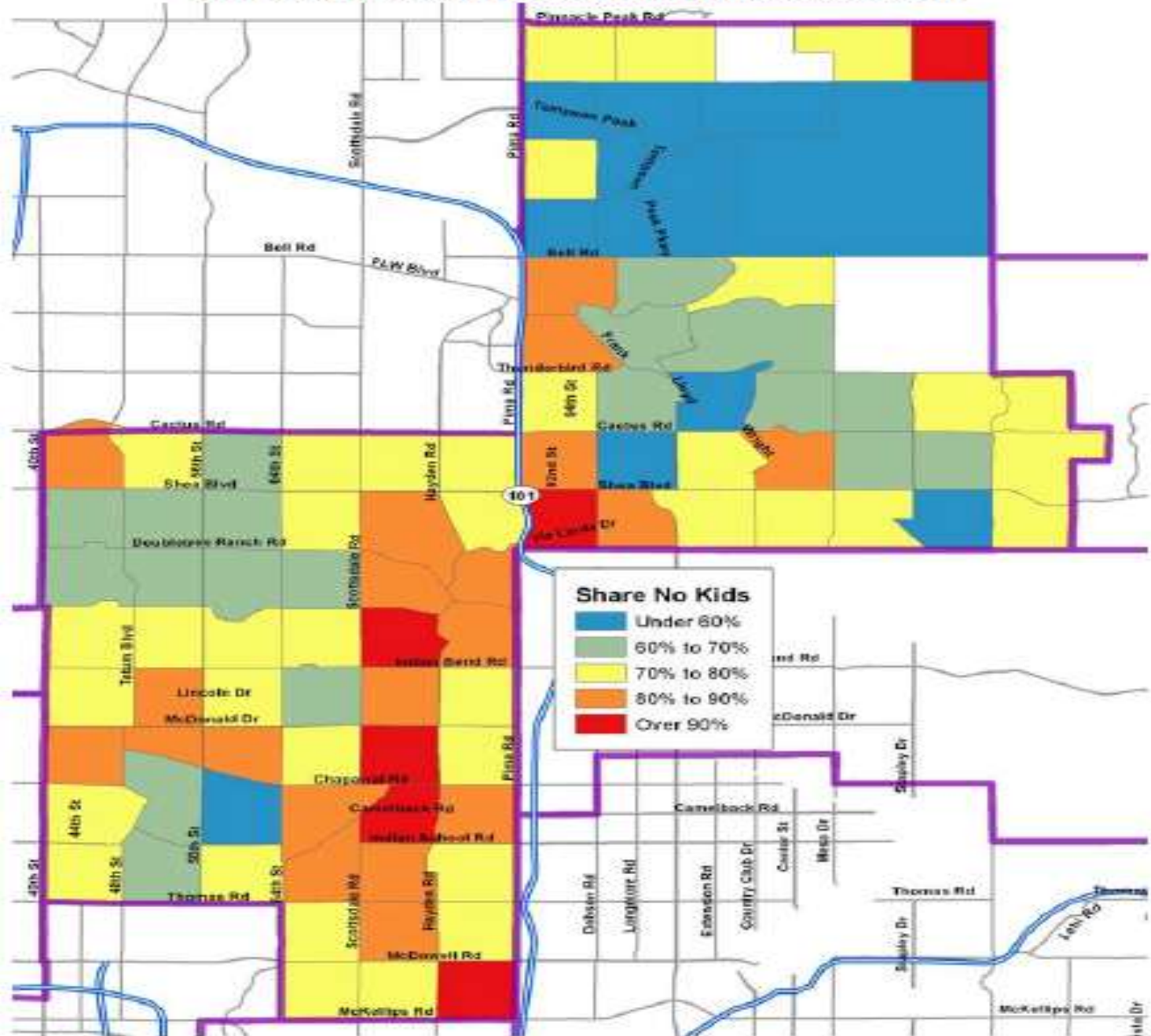


Blue	Under 0.15
Green	0.15 to 0.20
Yellow	0.20 to 0.25
Orange	0.25 to 0.35
Red	0.35 to 0.66

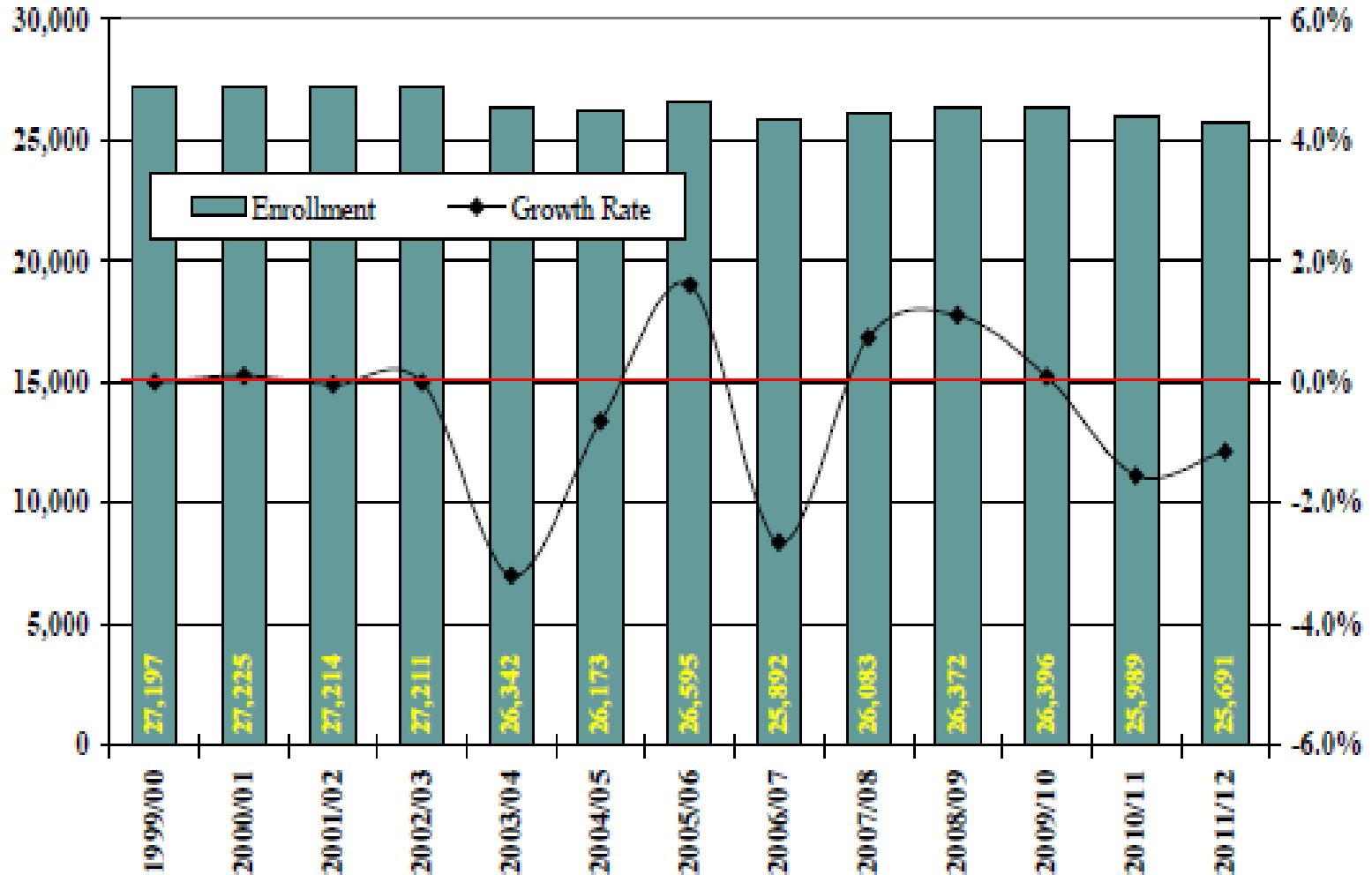
POPULATION AGE 5 TO 13 CAPTURE RATE



HOUSEHOLDS WITHOUT CHILDREN UNDER 18



ENROLLMENT AND ENROLLMENT GROWTH RATE: 1999/2000 – 2011/2012



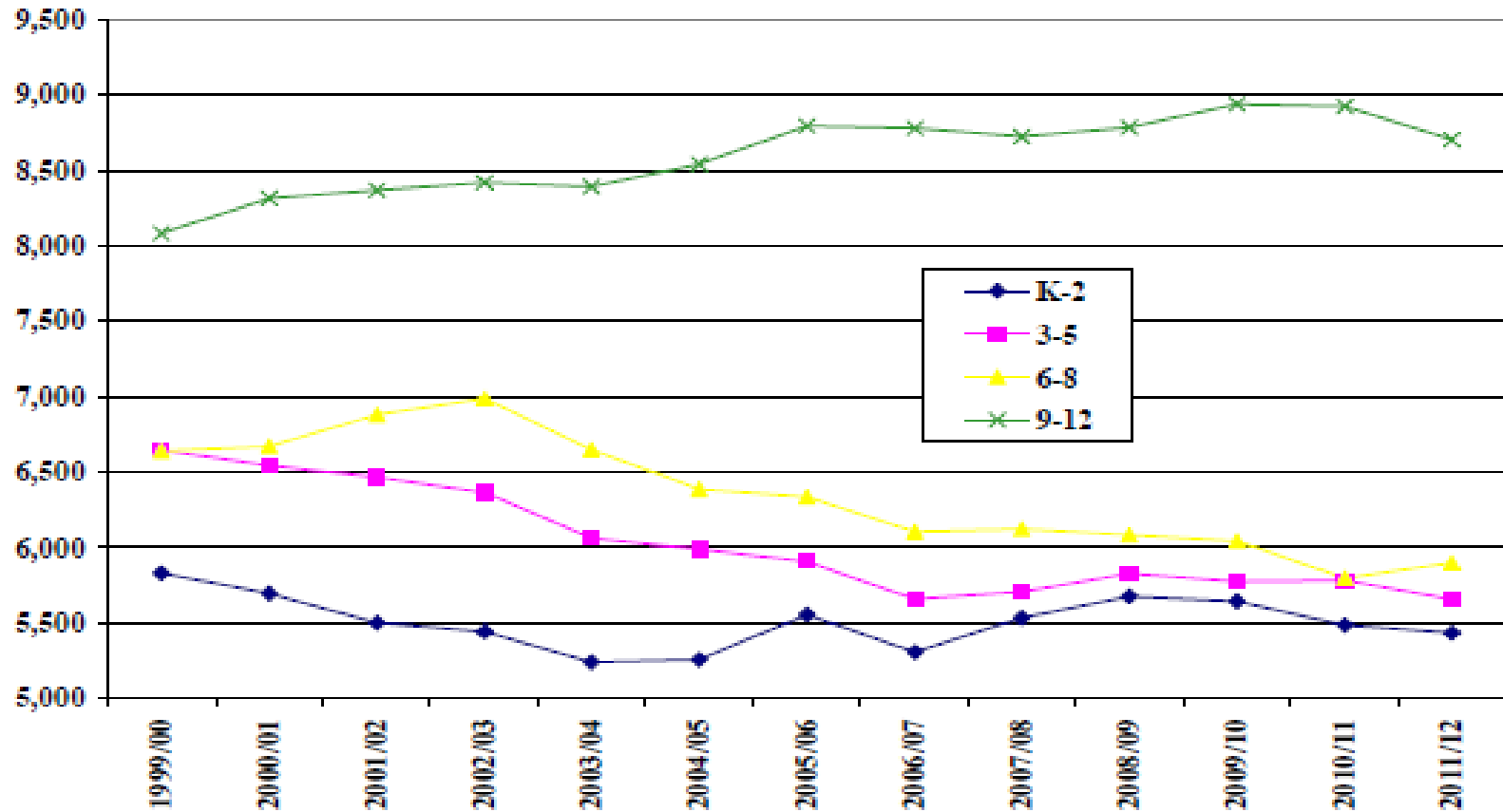
Sources: Arizona Department of Education; Scottsdale Unified School District.

Key findings of the 2011/12 Demographic and Enrollment Analysis update

- o The primary demographic change impacting the District is the declining population per household
- o Both the under 5 and the 5 to 13 age groups declined by about 16 percent between 2000 and 2010, affecting both current and future enrollments. The 14 to 17 year old high school group grew during this period, but only by 3.7 percent or 258 person
- o Changes in the population are mirrored in the age and family structure of the households in the District. The share of households with children has declined by 1.3 percent.

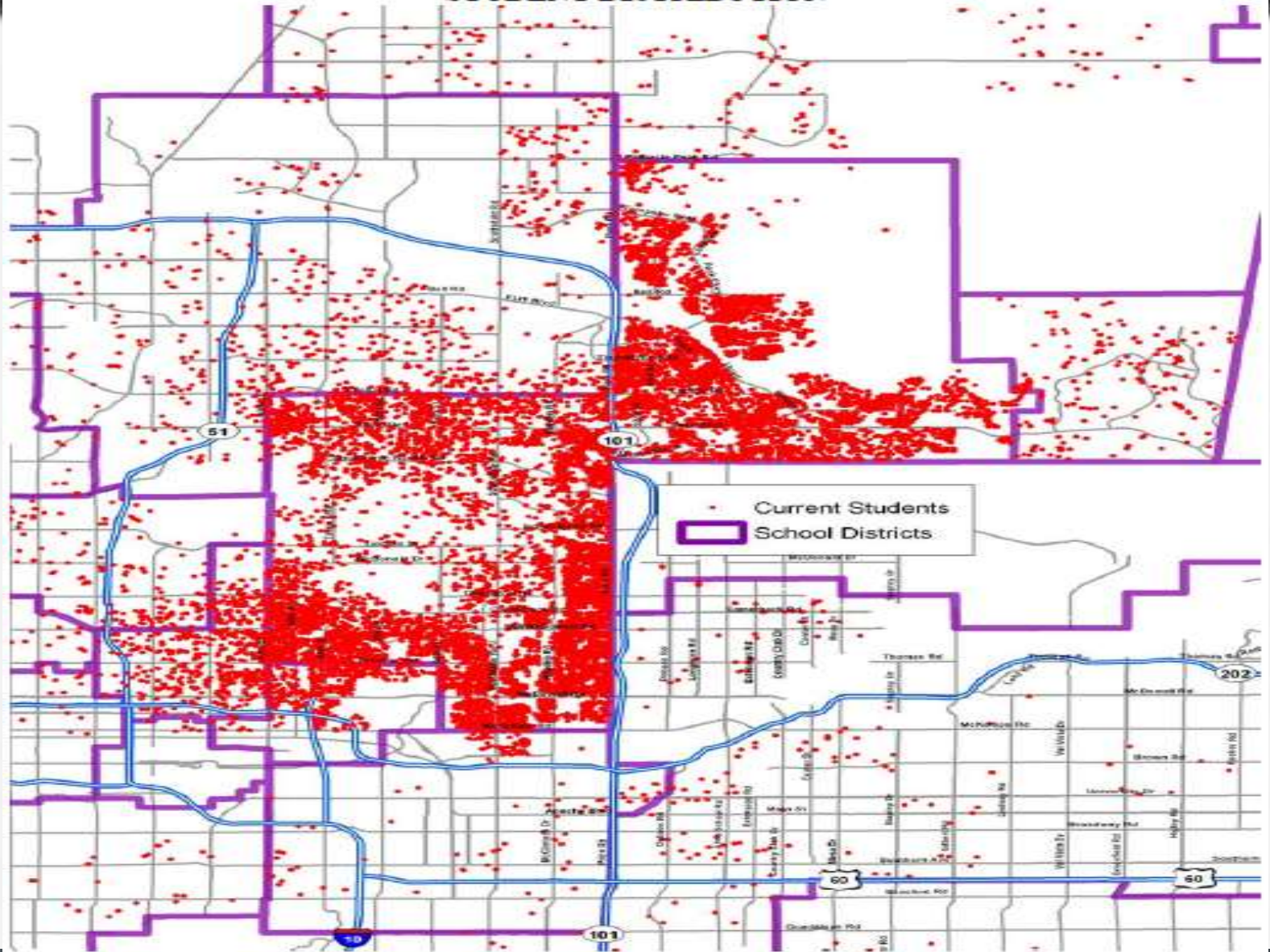
Looking Back

ENROLLMENT GROWTH RATE BY LEVEL: 1999/2000 – 2011/2012



Sources: Arizona Department of Education; Scottsdale Unified School District.

STUDENT DISTRIBUTION



Open Enrollment Comparison

SCHOOL ENROLLMENT BY ATTENDANCE AREA (K-8th GRADE): 2010/11-2021/22

School Attended	School ID	School Attendance Area of Residence																							Outside District	Total Attend	Total Reside	Diff.	
		100	101	102	200	201	202	203	301	400	401	402	403	404	500	501	502	600	601	602	700	701	702	703					
Ingleside Middle School	100	511			1				24	1	3	6	1							8	1	1	223	780	643	137			
Hopi Elementary School	101		541	76		2	1			1	3	12	2						2	2	4	8	140	794	623	171			
Tavan Elementary School	102		11	417		1				5	2	19	5								2	2	303	767	731	36			
Arcadia Neighborhood Learning Center	103	81	32	113	1	2	2		34	18	11	24	9							17	6	6	9	150	515	0	515		
Cocopah Middle School	200	3			674			3	4	1	2		1	17			18			37	7		3	120	890	723	167		
Cherokee Elementary School	201		5	4		326	11	31	2					1	10			3	6	52	1		87	539	385	154			
Cochise Elementary School	202		3	5		3	422	14	6	1	4	5	2		4	47		6	17	38	4	9	37	627	514	113			
Sequoia Elementary School	203				31	3	323	1		1	6	2			7	19		1	1	3	2	1	155	556	398	158			
Copper Ridge School	301	1		1	3	2			112	2	1	2		55	37	30	8	6	5	1	5	2	257	1,230	903	327			
Supai Middle School	400	17						1	385											6			51	460	640	-180			
Hohokam Elementary School	401	3	1	9						292	42	28	25							2	13	6	67	488	491	-3			
Pima Elementary School	402			6		1	3	1		85	396	36	33				1	1	1		4	39	29	58	694	633	61		
Tonalea Elementary School	403	7	2	64						6	33	352	28				1					5	1	53	552	589	-37		
Yavapai Elementary School	404			2						24	24	35	401									3		76	566	547	19		
Desert Canyon Middle School	500				14				12	3		1								34		7	1	28	648	911	-263		
Desert Canyon Elementary	501						1	1	7															19	628	749	-121		
Redfield Elementary School	502		2			2	9	6	21		4	1								24	415		2	81	603	966	-363		
Cheyenne Traditional School	503				13	4	20	6	34						153	124	221	133	115	77	2	1	3	90	996	0	996		
Mountainside Middle School	600				12				1	4		1			134							6		77	923	884	39		
Anasazi Elementary School	601						4								8	61				411	55		1	96	639	632	7		
Laguna Elementary School	602					4	12	3			3	2			9	94				62	432		4	45	670	629	41		
Mohave Middle School	700	14			2				184					4			2					400		34	640	484	156		
Kiva Elementary School	701	5	8	16	1	7	7			12	29	32	20				5		2	3		302	83	650	472	178			
Navajo Elementary School	702	1	1	4	1	1		1		10	53	20	10				2		1	2		8	303	43	501	475	26		
Pueblo Elementary School	703		17	14	1	4	17	9	3		26	18	18	9			2	7	1	2	6		31	630	532	98			
Total		643	623	731	723	385	514	398	903	640	491	633	589	547	911	749	966	884	632	629	484	472	475	532	2,432	16,986	14,554	2,432	
Total Attending School of Residence Area																										12,659			
Percent Attending School of Residence Area																											75%		

Open Enrollment Comparison

SCHOOL ENROLLMENT BY ATTENDANCE AREA (9th-12th GRADE): 2010/11-2021/22

School Attended	School Attendance Area of Residence						Outside District	Total Attend	Total Reside	Difference	
	1000	2000	3000	4000	5000	6000					
Sierra Vista Academy	405	2	1	7	4	4	6	24	0	24	
Arcadia High School	1000	930	10	1	88	1	57	599	1,686	1,036	650
Chaparral High School	2000	15	1,235	284	17	233	93	311	2,188	1,634	554
Coronado High School	4000	53	2	816	2	40	305	1,218	1,172	46	
Desert Mountain High	5000	1	26	24	9	2,041	22	168	2,291	2,370	-79
Saguaro High School	6000	35	38	13	235	89	776	112	1,298	992	306
Total		1,036	1,312	322	1,172	2,370	992	1,501	8,705	7,204	1,501
Total Attending School of Residence Area									6,194		
Percent Attending School of Residence Area									71%		

Source: Scottsdale Unified School District, Applied Economics

Key findings of the 2011/12 Demographic and Enrollment Analysis update

- o Households headed by persons in the prime parenting years, from age 25 to 44, decreased by over 4,400 between 2000 and 2010. In the same period, the number of householders aged 55 or over increased by 6,894
- o The Scottsdale Unified School District has a residential development potential currently estimated at just over 6,000 total housing units.
- o While 5,600 new housing units are to be added over the next ten years, the number of households is expected to increase by about 9,200, based on the combination of new units and higher occupancy rates. Combined with demographic trends, this would result in a total District-wide population of about 238,800 people in 2021/22, an increase of about 16,000 persons.

HOUSEHOLD CHARACTERISTICS

	2000		2010		Change (2000-2010)	
Total Households	98,031	100.0%	102,742	100.0%	4,711	4.8%
Households with Kids	23,051	23.5%	22,750	22.1%	-302	-1.3%
Under 6 only	5,340	5.4%	5,115	5.0%	-225	-4.2%
Under 6 and 6 to 17	4,171	4.3%	3,616	3.5%	-555	-13.3%
6 to 17 only	13,540	13.8%	14,245	13.9%	705	5.2%
Couple	17,297	17.6%	15,628	15.2%	-1,670	-9.7%
Under 6 only	4,192	4.3%	3,704	3.6%	-488	-11.6%
Under 6 and 6 to 17	3,528	3.6%	2,681	2.6%	-847	-24.0%
6 to 17 only	9,578	9.8%	9,243	9.0%	-335	-3.5%
Single Parent	5,744	5.9%	7,348	7.2%	1,604	27.9%
Under 6 only	1,149	1.2%	1,363	1.3%	214	18.7%
Under 6 and 6 to 17	643	0.7%	919	0.9%	276	42.8%
6 to 17 only	3,952	4.0%	4,840	4.7%	888	22.5%
Households without Kids	74,980	76.5%	79,992	77.9%	5,013	6.7%
Couple	29,050	29.6%	27,860	27.1%	-1,191	-4.1%
Single	5,340	5.4%	5,510	5.4%	170	3.2%
Non-family	40,589	41.4%	46,623	45.4%	6,034	14.9%
Households by Age of Householder						
15 to 24	4,054	4.1%	4,290	4.2%	236	5.8%
25 to 34	16,026	16.3%	14,870	14.5%	-1,156	-7.2%
35 to 44	19,478	19.9%	16,217	15.8%	-3,261	-16.7%
45 to 54	18,553	18.9%	20,552	20.0%	1,999	10.8%
55 to 64	15,046	15.3%	18,844	18.3%	3,799	25.2%
65 to 74	12,743	13.0%	13,652	13.3%	909	7.1%
Over 75	12,131	12.4%	14,316	13.9%	2,186	18.0%

Source: U.S. Bureau of the Census, 2000 and 2010.

RESIDENTIAL VACANCY RATES

	Central Scottsdale			Arcadia/Paradise Valley			North Scottsdale			Maricopa County		
	Inventory	Vacant	% Vacant	Inventory	Vacant	% Vacant	Inventory	Vacant	% Vacant	Inventory	Vacant	% Vacant
Single Family												
2005	20,169	400	2.0%	16,634	175	1.1%	51,480	525	1.0%	967,709	19,400	2.0%
2006	20,151	600	3.0%	16,741	675	4.0%	52,604	1,575	3.0%	1,010,366	30,200	3.0%
2007	20,149	1,200	6.0%	16,869	850	5.0%	53,241	2,650	5.0%	1,037,552	51,725	5.0%
2008	20,152	1,200	6.0%	16,935	850	5.0%	53,762	2,700	5.0%	1,058,412	60,175	5.7%
2009	20,162	1,400	6.9%	17,000	1,525	9.0%	53,989	4,325	8.0%	1,068,228	106,125	9.9%
2010	20,167	1,400	6.9%	17,034	1,375	8.1%	54,085	3,775	7.0%	1,074,341	101,625	9.5%
2011	20,177	800	4.0%	17,062	1,025	6.0%	54,193	2,700	5.0%	1,079,746	83,475	7.7%
Townhouse/Condo												
2005	15,402	150	1.0%	3,008	50	1.7%	15,185	300	2.0%	111,467	2,200	2.0%
2006	16,638	325	2.0%	3,374	200	5.9%	17,202	175	1.0%	128,477	3,100	2.4%
2007	17,062	500	2.9%	3,378	200	5.9%	15,904	475	3.0%	132,495	5,150	3.9%
2008	17,354	525	3.0%	3,525	200	5.7%	16,452	500	3.0%	143,571	6,000	4.2%
2009	17,431	1,750	10.0%	3,525	525	14.9%	16,470	825	5.0%	144,335	14,450	10.0%
2010	17,436	875	5.0%	3,525	525	14.9%	16,487	825	5.0%	144,896	12,625	8.7%
2011	17,399	1,050	6.0%	3,623	750	20.7%	16,286	650	4.0%	142,756	11,875	8.3%
Multifamily												
2005	11,242	775	6.9%	4,008	200	5.0%	12,121	475	3.9%	327,913	25,575	7.8%
2006	10,041	500	5.0%	3,902	150	3.8%	10,498	525	5.0%	321,018	12,675	3.9%
2007	9,877	500	5.1%	3,902	225	5.8%	12,427	875	7.0%	325,486	19,150	5.9%
2008	9,889	700	7.1%	3,902	400	10.3%	12,387	1,250	10.1%	327,701	33,525	10.2%
2009	9,899	1,200	12.1%	3,902	675	17.3%	12,399	1,125	9.1%	333,249	46,050	13.8%
2010	9,899	1,200	12.1%	3,902	750	19.2%	12,401	750	6.0%	339,509	40,550	11.9%
2011	9,937	700	7.0%	3,831	925	24.1%	12,476	875	7.0%	345,294	37,550	10.9%

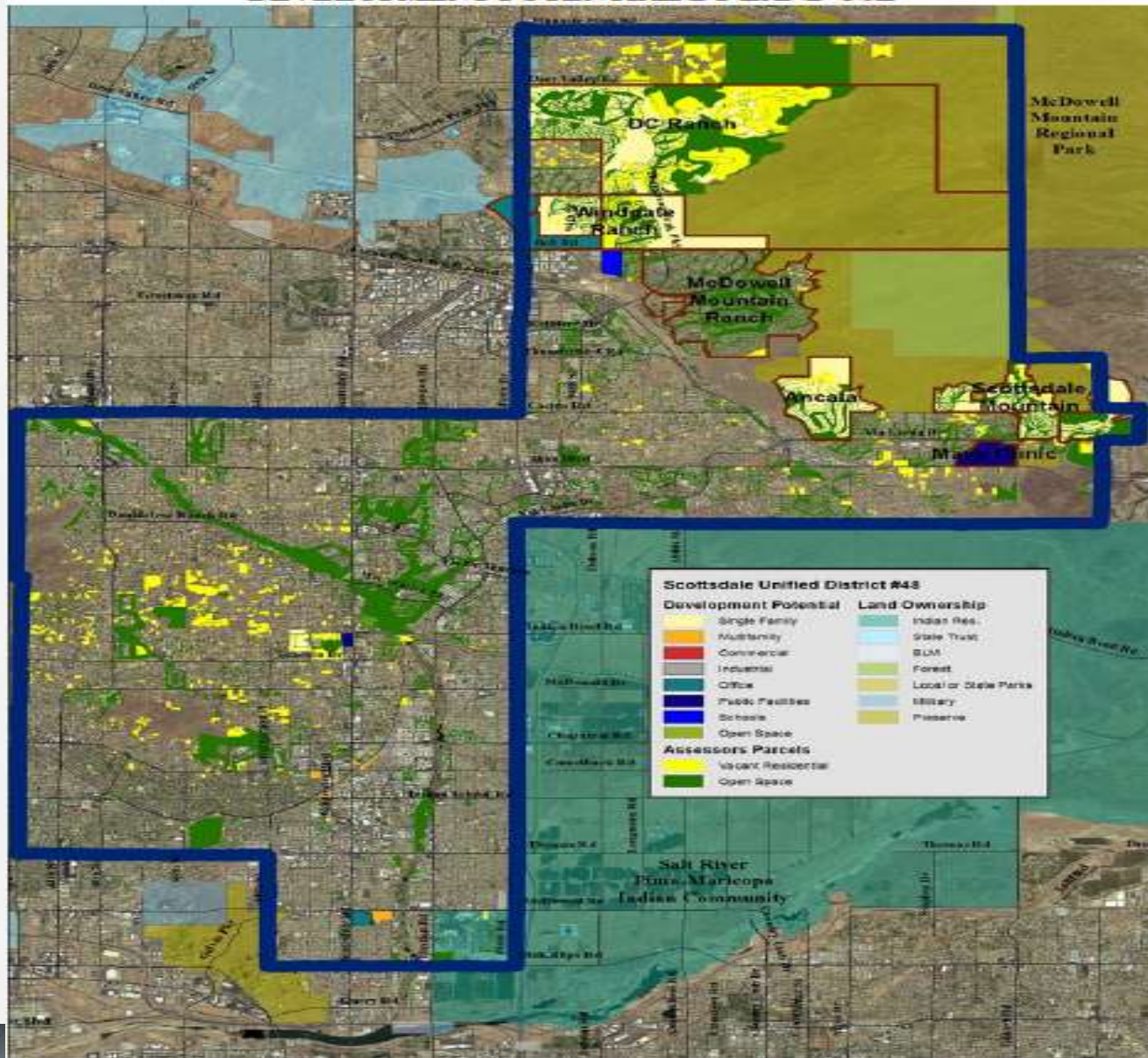
Source: Realty Studies, Arizona State University: Phoenix Metro Realty Study, 2005-2011;
Applied Economics, 2012.

POTENTIAL NEW HOUSING BY DEVELOPMENT TIMELINE

Housing Type	Active Projects	Vacant Land				Total
		1 Year	2-3 Years	3-5 Years	5-10 Years	
Single Family .1 - 2 du/ac	730	-	-	149	-	879
Single Family 2.01 - 3.5 du/ac	1,142	-	-	-	-	1,142
Single Family 3.51 - 4.5 du/ac	171	-	-	-	-	171
Single Family Attached	20	-	-	-	-	20
Total Single Family	2,063	-	-	149	-	2,212
Multifamily to 12 du/ac	236	-	-	-	-	236
Multifamily 12.0 du/ac & Over	1,130	1,285	-	738	449	3,602
Total Multifamily	1,366	1,285	-	738	449	3,838
Total	3,429	1,285	-	887	449	6,050

Sources: City of Scottsdale Planning Department; Town of Paradise Valley Planning Department;
LandisCor, Applied Economics, 2012.

DEVELOPMENT POTENTIAL BY LAND USE



Key findings of the 2011/12 Demographic and Enrollment Analysis update

- o The average number of school-age persons per household has decreased from a high of 0.339 in 2000/01 to just 0.296 currently.
- o At the present time, about 9,000 school-age persons in the District choose other educational providers
- o Overall, District enrollment is expected to remain fairly stable over the next ten years

PROJECTED ENROLLMENT AND ENROLLMENT GROWTH RATE

Year	Households	School-Age Population *		K-12 Enrollment		Net Difference	Enrollment - Population Ratio
		Total	Per Household	Total	Per Household		
1990/91	73,225	22,103	0.302	19,421	0.265	2,682	0.879
1995/96	83,644	26,762	0.320	23,125	0.276	3,637	0.864
2000/01	98,031	33,195	0.339	27,225	0.278	5,970	0.820
2001/02	99,939	33,412	0.334	27,214	0.272	6,198	0.815
2002/03	101,776	33,591	0.330	27,211	0.267	6,380	0.810
2003/04	103,675	33,768	0.326	26,342	0.254	7,426	0.780
2004/05	105,594	33,939	0.321	26,173	0.248	7,766	0.771
2005/06	107,278	34,025	0.317	26,595	0.248	7,430	0.782
2006/07	107,097	33,573	0.313	25,892	0.242	7,681	0.771
2007/08	106,778	33,158	0.311	26,083	0.244	7,075	0.787
2008/09	105,359	32,446	0.308	26,372	0.250	6,074	0.813
2009/10	104,060	31,746	0.305	26,396	0.254	5,350	0.831
2010/11	102,742	31,084	0.303	25,989	0.253	5,095	0.836
2011/12	103,460	30,655	0.296	25,691	0.248	4,964	0.838
2012/13	104,668	30,391	0.290	25,624	0.245	4,767	0.843
2013/14	106,093	30,239	0.285	25,636	0.242	4,604	0.848
2014/15	107,347	30,056	0.280	25,700	0.239	4,356	0.855
2015/16	108,489	30,018	0.277	25,684	0.237	4,334	0.856
2016/17	109,342	30,192	0.276	25,584	0.234	4,608	0.847
2017/18	110,032	30,296	0.275	25,574	0.232	4,722	0.844
2018/19	110,792	30,314	0.274	25,387	0.229	4,927	0.837
2019/20	111,527	30,325	0.272	25,245	0.226	5,079	0.832
2020/21	112,196	30,300	0.270	25,147	0.224	5,154	0.830
2021/22	112,641	30,014	0.266	24,881	0.221	5,133	0.829

Source: Applied Economics, 2012.

* Population age 5 through 17, corresponds with Kindergarten through 12th grade.

Bolding indicates historical data.

PROJECTED ENROLLMENT BY LEVEL: 2000/01-2021/22

Fall	PS	Enrollment by Level				K-12 Total		
		K-6	7-8	K-8	9-12	Enrollment	Change	% Growth
2000/01	na	14,504	4,405	18,909	8,316	27,225		
2001/02	na	13,751	4,467	18,218	8,370	26,588	-637	-2.3%
2002/03	100	14,094	4,697	18,791	8,420	27,211	623	2.3%
2003/04	190	13,432	4,517	17,949	8,393	26,342	-869	-3.2%
2004/05	183	13,249	4,381	17,630	8,543	26,173	-169	-0.6%
2005/06	341	13,530	4,269	17,799	8,796	26,595	422	1.6%
2006/07	263	12,963	4,104	17,067	8,804	25,871	-724	-2.7%
2007/08	475	13,163	4,196	17,359	8,680	26,039	168	0.7%
2008/09	657	13,430	4,155	17,585	8,787	26,372	333	1.3%
2009/10	697	13,360	4,096	17,456	8,940	26,396	24	0.1%
2010/11	749	13,052	4,012	17,064	8,925	25,989	-407	-1.5%
2011/12	770	13,051	3,935	16,986	8,705	25,691	-298	-1.1%
2012/13	769	12,998	3,925	16,923	8,701	25,624	-67	-0.3%
2013/14	771	13,073	4,036	17,109	8,527	25,636	12	0.0%
2014/15	772	13,148	3,930	17,078	8,622	25,700	65	0.3%
2015/16	771	13,114	3,977	17,091	8,593	25,684	-16	-0.1%
2016/17	771	13,131	3,995	17,126	8,458	25,584	-100	-0.4%
2017/18	773	13,092	3,892	16,984	8,590	25,574	-10	0.0%
2018/19	766	12,965	3,958	16,923	8,464	25,387	-187	-0.7%
2019/20	763	12,833	4,025	16,858	8,387	25,245	-142	-0.6%
2020/21	759	12,693	3,981	16,674	8,473	25,147	-99	-0.4%
2021/22	752	12,530	3,924	16,454	8,427	24,881	-266	-1.1%

Source: Applied Economics, 2012.

Bolding indicates actuals.

Enrollment Projection by School

- o Only about 71 percent of the high school students are attending the attendance area's designated high school
- o About 75 percent of the Kindergarten through 8th grade students attend the school designated for their area of residence.

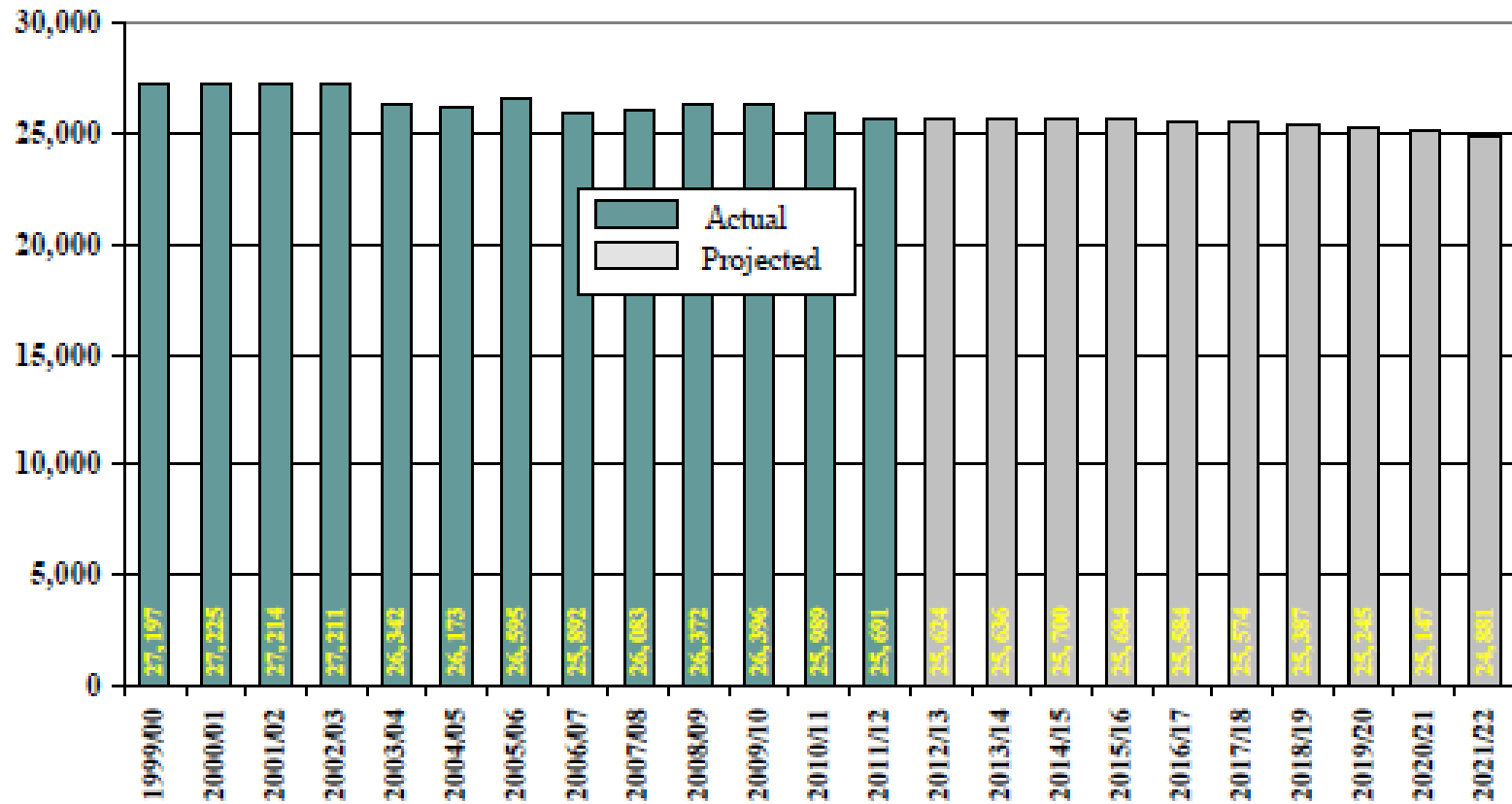
Enrollment Projection by School

- o Copper Ridge School is expected to have the largest enrollment among Kindergarten through 8th grade schools for the duration of the projection period, growing by 85 students.
- o Cheyenne Traditional should grow by 54 and retain its number two size.
- o Mohave, Kiva, Navajo, and Pueblo are all projected to grow by over 100 students, with Navajo and Pueblo having the largest growth.
- o Mountainside, Pima, Cocopah, and Anasazi schools all are expected to lose over 100 students by 2021/22.

Enrollment Projection by School

- o Desert Mountain has the most students at 2,291, followed closely by Chaparral High with 2,188.
- o Both of these schools are expected to decline in enrollment over the next ten years with Desert Mountain losing 624 students. Even though it is projected to lose 101 students, Chaparral would become the largest high school by 2021/22 with an enrollment of 2,087.
- o Arcadia High is set to gain 86 students and become the second largest high school with 1,772 enrolled.
- o Coronado and Saguaro are to gain 223 and 136 students respectively over ten years.

PROJECTED ENROLLMENT



Sources: Scottsdale Unified School District; Applied Economics, 2012.

School Enrollment by District Complex

- o The complex areas have meaningful differences in demographic and household characteristics that can be expected to cause variations in enrollment changes in the future. In some cases there are short term factors affecting enrollment, while more systemic issues are present in others.

Arcadia Complex

- o Enrollment at the Arcadia Complex has been fluctuating the past few years, with an increase in the current year replacing some of the loss from the previous year. This is an older, well established area, so large changes in enrollment are not to be expected.

ARCADIA COMPLEX ENROLLMENT: 2000/01-2021/22

Fall	PS	Enrollment by Level				K-12 Total		
		K-6	7-8	K-8	9-12	Enrollment	Change	% Growth
2000/01	0	2,010	669	2,679	1,204	3,883		
2001/02	0	2,011	660	2,671	1,253	3,924	41	1.1%
2002/03	17	2,011	680	2,691	1,241	3,932	8	0.2%
2003/04	56	2,011	677	2,688	1,229	3,917	-15	-0.4%
2004/05	16	2,084	620	2,704	1,280	3,984	67	1.7%
2005/06	47	2,220	600	2,820	1,376	4,196	212	5.3%
2006/07	40	2,144	585	2,729	1,404	4,133	-63	-1.5%
2007/08	58	2,207	616	2,823	1,417	4,240	107	2.6%
2008/09	52	2,305	746	3,051	1,581	4,632	392	9.2%
2009/10	51	2,273	702	2,975	1,662	4,637	5	0.1%
2010/11	57	2,122	647	2,769	1,713	4,482	-155	-3.3%
2011/12	49	2,198	658	2,856	1,686	4,542	60	1.3%
2012/13	49	2,235	655	2,890	1,674	4,564	22	0.5%
2013/14	49	2,288	674	2,962	1,568	4,530	-34	-0.7%
2014/15	49	2,380	606	2,986	1,570	4,556	26	0.6%
2015/16	49	2,429	605	3,034	1,563	4,597	41	0.9%
2016/17	49	2,475	630	3,105	1,471	4,576	-21	-0.5%
2017/18	49	2,514	582	3,096	1,470	4,566	-10	-0.2%
2018/19	48	2,462	644	3,106	1,406	4,512	-54	-1.2%
2019/20	48	2,411	723	3,134	1,338	4,472	-40	-0.9%
2020/21	48	2,359	708	3,067	1,433	4,500	28	0.6%
2021/22	48	2,303	691	2,994	1,472	4,466	-34	-0.8%

Source: Applied Economics, 2012.

Bolding indicates actuals.

Chaparral Complex

- o The Chaparral Complex is another area of slightly fluctuating enrollment levels
- o Historically, vacancy rates have been elevated, increasing by 949 units in an area that only added 1,129 new housing units. These vacancies will drop over time, but there will be very few residential additions to offset the declines associated with an aging population.
- o Enrollment is expected to continue fluctuating slightly with a slight trend upwards after next year, then declining significantly after 2017/18.
- o Chaparral North has increased its enrollment most years since 2003/04. As the economy improves, new housing construction is expected to increase and the occupancy rates for existing housing should increase as well. As a result, student enrollment is expected to increase throughout most of the projection period, though at variable levels.

CHAPARRAL COMPLEX ENROLLMENT: 2000/01-2021/22

Fall	PS	Enrollment by Level				K-12 Total		
		K-6	7-8	K-8	9-12	Enrollment	Change	% Growth
2000/01	0	2,363	819	3,182	1,889	5,071		
2001/02	0	2,348	871	3,219	1,847	5,066	-5	-0.1%
2002/03	20	2,315	872	3,187	1,868	5,055	-11	-0.2%
2003/04	19	2,183	757	2,940	1,793	4,733	-322	-6.4%
2004/05	24	2,078	728	2,806	1,793	4,599	-134	-2.8%
2005/06	26	2,049	752	2,801	1,849	4,650	51	1.1%
2006/07	18	1,933	682	2,615	1,825	4,440	-210	-4.5%
2007/08	43	1,940	682	2,622	1,927	4,549	109	2.5%
2008/09	81	1,909	674	2,583	2,025	4,608	59	1.3%
2009/10	122	1,988	670	2,658	2,108	4,766	158	3.4%
2010/11	108	2,001	608	2,609	2,116	4,725	-41	-0.9%
2011/12	129	1,982	630	2,612	2,188	4,800	75	1.6%
2012/13	128	2,007	595	2,602	2,175	4,777	-23	-0.5%
2013/14	129	1,975	628	2,603	2,208	4,811	34	0.7%
2014/15	130	2,006	626	2,632	2,219	4,851	41	0.8%
2015/16	130	1,996	597	2,593	2,261	4,854	3	0.1%
2016/17	130	1,999	618	2,617	2,238	4,855	1	0.0%
2017/18	130	1,956	619	2,575	2,277	4,852	-3	-0.1%
2018/19	129	1,930	623	2,553	2,276	4,829	-23	-0.5%
2019/20	126	1,899	595	2,494	2,228	4,722	-107	-2.2%
2020/21	125	1,868	583	2,451	2,249	4,700	-23	-0.5%
2021/22	122	1,836	573	2,409	2,192	4,601	-99	-2.1%

Source: Applied Economics, 2012.

Bolding indicates actuals.

Coronado Complex

- o This complex is older than most in the District, with an aging population and generally declining enrollment.
- o Recent additions to the housing supply have nearly all been multifamily, contributing to the decline in the number of students per household. Enrollment is expected to be flat for the next couple of years, with some modest growth occurring as occupancy rates improve and housing turnover transitions the local population composition to younger householders.

CORONADO COMPLEX ENROLLMENT: 2000/01-2021/22

Fall	PS	Enrollment by Level				K-12 Total		
		K-6	7-8	K-8	9-12	Enrollment	Change	% Growth
2000/01	0	2,585	636	3,221	1,268	4,489		
2001/02	0	2,522	648	3,170	1,235	4,405	-84	-1.9%
2002/03	18	2,513	698	3,211	1,286	4,497	92	2.1%
2003/04	45	2,345	685	3,030	1,278	4,308	-189	-4.2%
2004/05	44	2,342	697	3,039	1,326	4,365	57	1.3%
2005/06	154	2,432	646	3,078	1,374	4,452	87	2.0%
2006/07	113	2,294	561	2,855	1,461	4,316	-136	-3.1%
2007/08	137	2,320	605	2,925	1,394	4,319	3	0.1%
2008/09	155	2,382	559	2,941	1,378	4,319	0	0.0%
2009/10	184	2,274	536	2,810	1,404	4,214	-105	-2.4%
2010/11	221	2,225	546	2,771	1,365	4,136	-78	-1.9%
2011/12	222	2,300	460	2,760	1,242	4,002	-134	-3.2%
2012/13	222	2,271	525	2,796	1,212	4,008	6	0.1%
2013/14	222	2,297	590	2,887	1,128	4,015	7	0.2%
2014/15	224	2,279	580	2,859	1,201	4,060	45	1.1%
2015/16	224	2,281	582	2,863	1,206	4,069	9	0.2%
2016/17	226	2,296	548	2,844	1,268	4,112	43	1.1%
2017/18	230	2,294	549	2,843	1,343	4,186	74	1.8%
2018/19	227	2,270	574	2,844	1,289	4,133	-53	-1.3%
2019/20	227	2,257	587	2,844	1,297	4,141	8	0.2%
2020/21	226	2,243	583	2,826	1,293	4,119	-22	-0.5%
2021/22	225	2,215	576	2,791	1,303	4,094	-25	-0.6%

Source: Applied Economics, 2012.

Bolding indicates actuals.

Desert Mountain Complex

- o The total population in the Desert Mountain Complex grew by 2,660 persons from 2000 to 2010 but the population under 14 years of age fell by 2,270.
- o The area has been affected by increased housing vacancy rates and decreased new construction. Both of these factors are expected to reverse in coming years, but the population composition is such that declining population per household should offset the slight gain in the number of households, resulting in continued enrollment declines.
- o Householder ages show an aging trend with 44 percent over 54 years old and declining numbers of householders under 45.

DESERT MOUNTAIN COMPLEX ENROLLMENT: 2000/01-2021/22

Fall	PS	Enrollment by Level				K-12 Total		
		K-6	7-8	K-8	9-12	Enrollment	Change	% Growth
2000/01	0	5,484	1,650	7,134	2,393	9,527		
2001/02	0	4,892	1,601	6,493	2,458	8,951	-576	-6.0%
2002/03	34	4,813	1,423	6,236	2,374	8,610	-341	-3.8%
2003/04	53	4,525	1,356	5,881	2,416	8,297	-313	-3.6%
2004/05	79	4,319	1,337	5,656	2,405	8,061	-236	-2.8%
2005/06	81	4,346	1,316	5,662	2,449	8,111	50	0.6%
2006/07	64	4,230	1,275	5,505	2,480	7,985	-126	-1.6%
2007/08	141	4,205	1,365	5,570	2,433	8,003	18	0.2%
2008/09	214	4,181	1,335	5,516	2,332	7,848	-155	-1.9%
2009/10	151	4,016	1,309	5,325	2,360	7,685	-163	-2.1%
2010/11	201	3,921	1,328	5,249	2,335	7,584	-101	-1.3%
2011/12	190	3,824	1,283	5,107	2,291	7,398	-186	-2.5%
2012/13	189	3,723	1,270	4,993	2,368	7,361	-37	-0.5%
2013/14	187	3,704	1,256	4,960	2,330	7,290	-71	-1.0%
2014/15	185	3,616	1,227	4,843	2,381	7,224	-66	-0.9%
2015/16	183	3,560	1,262	4,822	2,329	7,151	-73	-1.0%
2016/17	180	3,505	1,236	4,741	2,304	7,045	-106	-1.5%
2017/18	179	3,471	1,217	4,688	2,333	7,021	-24	-0.3%
2018/19	177	3,461	1,186	4,647	2,302	6,949	-72	-1.0%
2019/20	177	3,451	1,177	4,628	2,331	6,959	10	0.1%
2020/21	175	3,441	1,174	4,615	2,282	6,897	-62	-0.9%
2021/22	174	3,434	1,168	4,602	2,263	6,865	-32	-0.5%

Source: Applied Economics, 2012.

Bolding indicates actuals.

Saguaro Complex

- o Enrollment in the Saguaro Complex has been experiencing declines of increasing levels over the past three years.
- o Population was down in 2010 for all age groups, and by 8.6 percent overall.
- o Households in the 35 to 44 age group were down by about 24 percent in 2010, but the under 34 cohort was up by 5.7 percent.
- o Enrollment is expected to have some modest gains in the next few years

SAGUARO COMPLEX ENROLLMENT: 2000/01-2021/22

Fall	PS	Enrollment by Level				K-12 Total		
		K-6	7-8	K-8	9-12	Enrollment	Change	% Growth
2000/01	0	2,062	631	2,693	1,562	4,255		
2001/02	0	1,978	687	2,665	1,577	4,242	-13	-0.3%
2002/03	11	1,925	695	2,620	1,651	4,271	29	0.7%
2003/04	17	1,818	688	2,506	1,677	4,183	-88	-2.1%
2004/05	20	1,809	629	2,438	1,739	4,177	-6	-0.1%
2005/06	33	1,781	598	2,379	1,748	4,127	-50	-1.2%
2006/07	28	1,705	626	2,331	1,634	3,965	-162	-3.9%
2007/08	40	1,762	633	2,395	1,509	3,904	-61	-1.5%
2008/09	49	1,819	600	2,419	1,471	3,890	-14	-0.4%
2009/10	63	1,869	610	2,479	1,406	3,885	-5	-0.1%
2010/11	76	1,840	619	2,459	1,396	3,855	-30	-0.8%
2011/12	89	1,781	640	2,421	1,298	3,719	-136	-3.5%
2012/13	88	1,824	565	2,389	1,272	3,661	-58	-1.6%
2013/14	89	1,875	546	2,421	1,293	3,714	53	1.4%
2014/15	90	1,924	571	2,495	1,251	3,746	32	0.9%
2015/16	90	1,907	593	2,500	1,234	3,734	-12	-0.3%
2016/17	89	1,912	607	2,519	1,177	3,696	-38	-1.0%
2017/18	88	1,889	591	2,480	1,167	3,647	-49	-1.3%
2018/19	88	1,858	611	2,469	1,191	3,660	13	0.4%
2019/20	87	1,820	615	2,435	1,193	3,628	-32	-0.9%
2020/21	86	1,777	603	2,380	1,216	3,596	-32	-0.9%
2021/22	84	1,730	587	2,317	1,197	3,514	-82	-2.3%

Source: Applied Economics, 2012.

Bolding indicates actuals.

Enrollment Projections

- o The Copper Ridge School and Redfield Elementary attendance areas are projected to contain the largest number of students by 2021/22, with 970 and 891 students respectively.
- o Copper Ridge is forecast to grow in the first half of the projection period, then slowly fall back.
- o Redfield should have a slight increase in students in 2014/15 but be in decline otherwise.

Enrollment Projections

- o The Desert Mountain High School attendance area is currently the largest with 2,370 students and is projected to be the second largest by 2021/22 after the loss of 627 students, leaving 1,743 students.
- o Chaparral High School is currently the second largest, including the students in the Chaparral North attendance area, but will total 2,100 students in 2021/22.
- o The Saguaro and Arcadia attendance areas contain the fewest students currently, which will remain the case in ten years, although both of these high schools' attendance areas are expected to experience increases in the student population over the projection period.

PROJECTED ENROLLMENT BY SCHOOL: 2010/11-2021/22

	Actual		2012/13	2013/14	2014/15	2015/16	2016/17	2017/18	2018/19	2019/20	2020/21	2021/22
	2010/11	2011/12										
Grades K-8th												
Ingliside Middle School	730	780	784	809	808	821	837	849	857	875	859	847
Hopi Elementary School	880	794	809	826	827	827	841	835	829	826	821	815
Tavan Elementary School	750	767	781	808	826	840	843	831	826	820	816	808
Arcadia Learning Center	506	515	521	531	533	541	546	541	545	547	542	543
Cocopah Middle School	893	890	896	876	901	852	849	799	792	787	786	768
Cherokee Elementary School	570	539	528	518	512	496	497	497	492	487	483	478
Cochise Elementary School	618	627	613	610	588	591	586	579	570	563	555	547
Sequoia Elementary School	557	556	533	543	532	532	531	530	526	524	520	516
Copper Ridge School	1,216	1,230	1,272	1,316	1,337	1,357	1,375	1,375	1,368	1,362	1,333	1,315
Supai Middle School	476	460	441	442	435	428	418	430	465	458	427	406
Hohokam Elementary School	467	488	495	510	518	529	535	527	500	487	476	458
Pima Elementary School	673	694	660	657	648	630	622	607	588	571	556	537
Tonalea Elementary School	529	552	563	557	555	554	550	541	514	497	479	460
Yavapai Elementary School	540	566	565	585	587	580	566	547	535	519	506	488
Desert Canyon Middle School	630	648	646	690	651	678	681	662	651	635	622	597
Desert Canyon Elementary	672	628	628	624	608	601	585	585	573	562	551	542
Redfield Elementary School	625	603	620	622	632	617	616	602	589	576	560	547
Cheyenne Traditional School	1,019	996	1,008	1,027	1,031	1,046	1,055	1,047	1,055	1,058	1,048	1,050
Mountainside Middle School	906	923	837	823	753	739	684	654	629	628	634	618
Anasazi Elementary School	680	640	628	607	575	562	553	560	550	544	540	534
Laguna Elementary School	690	670	646	613	629	609	616	612	607	601	598	592
Mohave Middle School	636	640	614	627	646	673	669	654	726	758	752	759
Kiva Elementary School	678	650	676	693	708	723	736	740	751	759	765	770
Navajo Elementary School	491	501	517	526	535	549	569	599	605	618	634	645
Pueblo Elementary School	632	630	645	670	704	716	765	783	780	794	808	815
Total	17,064	16,987	16,924	17,109	17,078	17,090	17,126	16,984	16,923	16,858	16,674	16,453
High School												
Sierra Vista Academy	25	24	24	24	24	24	24	24	24	24	25	25
Arcadia High School	1,708	1,686	1,691	1,633	1,656	1,681	1,657	1,726	1,714	1,706	1,773	1,772
Chaparral High School	2,178	2,188	2,158	2,135	2,108	2,129	2,119	2,184	2,189	2,131	2,135	2,087
Coronado High School	1,286	1,218	1,306	1,362	1,463	1,507	1,467	1,446	1,412	1,414	1,437	1,441
Desert Mountain High School	2,388	2,291	2,229	2,091	2,087	1,962	1,912	1,886	1,798	1,774	1,691	1,667
Saguaro High School	1,339	1,298	1,293	1,282	1,285	1,290	1,278	1,324	1,328	1,338	1,412	1,434
Total	8,925	8,705	8,701	8,526	8,622	8,593	8,458	8,590	8,464	8,387	8,473	8,427

ELEMENTARY AND MIDDLE SCHOOL PROJECTED ENROLLMENT CHANGE BY SCHOOL: 2011/11-2021/22

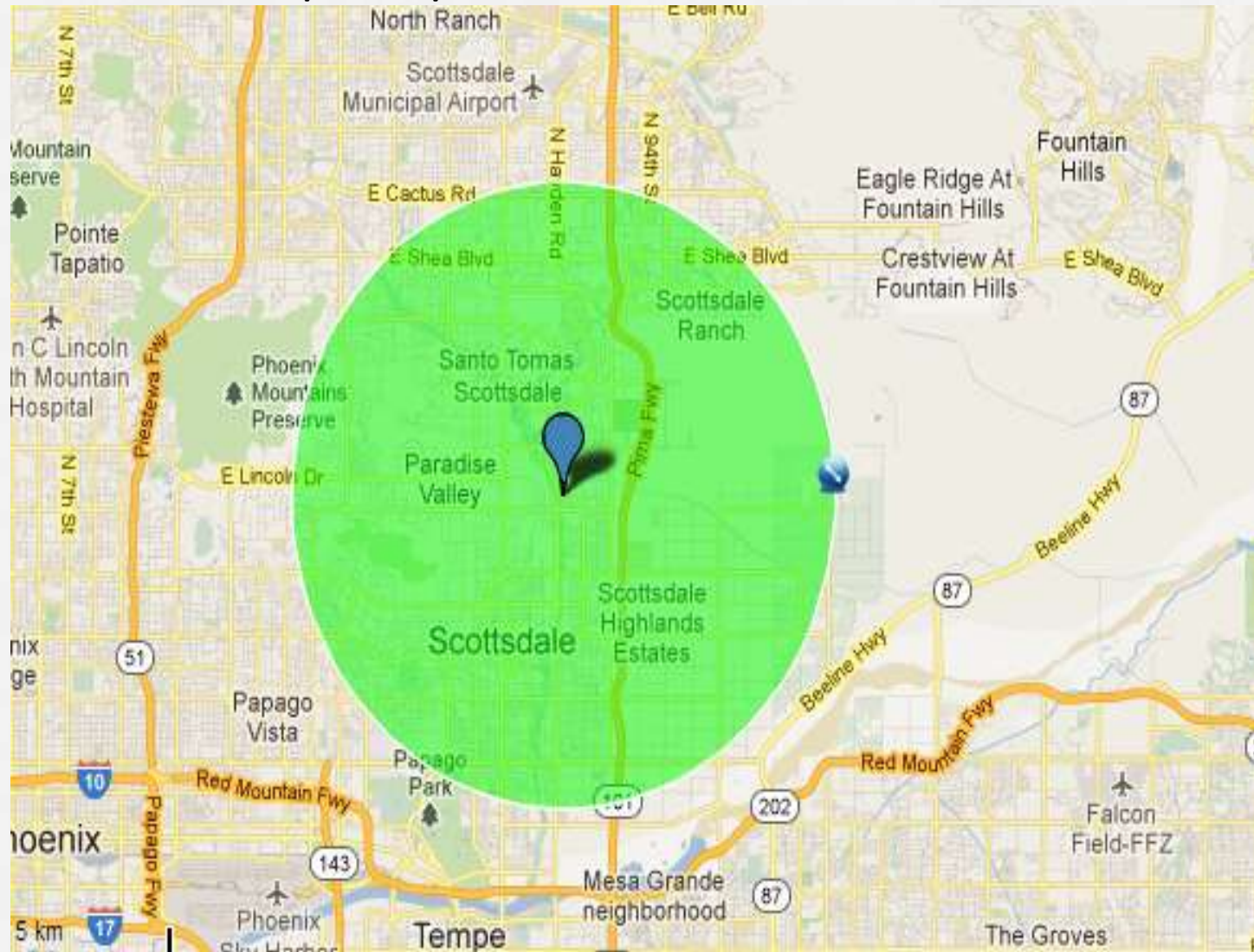
Rank		2011/12		2021/22	
1	Copper Ridge School	1,230	—————	Copper Ridge School	1,315
2	Cheyenne Traditional School	996	—————	Cheyenne Traditional School	1,050
3	Mountainside Middle School	923	—————	Ingleside Middle School	847
4	Cocopah Middle School	890	—————	Hopi Elementary School	815
5	Hopi Elementary School	794	—————	Pueblo Elementary School	815
6	Ingleside Middle School	780	—————	Tavan Elementary School	808
7	Tavan Elementary School	767	—————	Kiva Elementary School	770
8	Pima Elementary School	694	—————	Cocopah Middle School	768
9	Laguna Elementary School	670	—————	Mohave Middle School	759
10	Kiva Elementary School	650	—————	Navajo Elementary School	645
11	Desert Canyon Middle School	648	—————	Mountainside Middle School	618
12	Mohave Middle School	640	—————	Desert Canyon Middle School	597
13	Anasazi Elementary School	640	—————	Laguna Elementary School	592
14	Pueblo Elementary School	630	—————	Cochise Elementary School	547
15	Desert Canyon Elementary	628	—————	Redfield Elementary School	547
16	Cochise Elementary School	627	—————	Arcadia Learning Center	543
17	Redfield Elementary School	603	—————	Desert Canyon Elementary	542
18	Yavapai Elementary School	566	—————	Pima Elementary School	537
19	Sequoia Elementary School	556	—————	Anasazi Elementary School	534
20	Tonalea Elementary School	552	—————	Sequoia Elementary School	516
21	Cherokee Elementary School	539	—————	Yavapai Elementary School	488
22	Arcadia Learning Center	515	—————	Cherokee Elementary School	478
23	Navajo Elementary School	501	—————	Tonalea Elementary School	460
24	Hohokam Elementary School	488	—————	Hohokam Elementary School	458
25	Supai Middle School	460	—————	Supai Middle School	406

Source: Applied Economics, 2012.

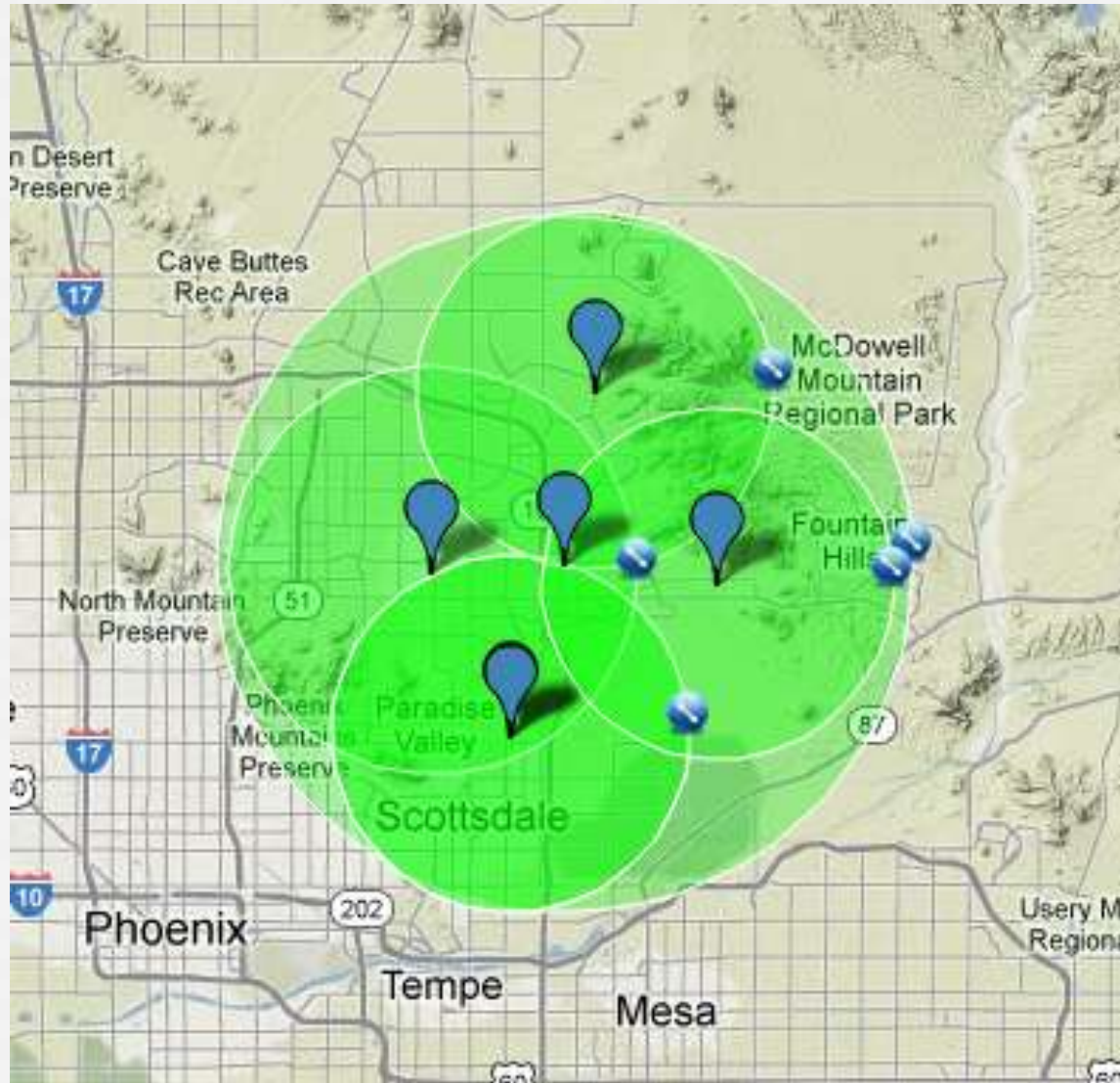
Summary

- o Overall, District enrollment is expected to remain fairly stable over the next ten years
- o At the present time, about 9,000 school-age persons in the District choose other educational providers
- o In order to grow we must focus on families that are choosing other educational providers

TOTAL of 33 Private/Charter/Other District schools within 5 miles of the center of our District



TOTAL of 162 Private/Charter/Other District schools





DISCUSSION