



***Development of a
Community Resource Center and a
Community-Based Network of Services in
Scottsdale Unified School District
January 2015***



The Value of Community Resource Centers

- There is a need for schools to create collaborative and coordinated systems for family and community engagement.
- Strong school communities engender strong students.
- Families and communities strongly affect children's school success.
- Dedicated to strengthening families and communities by providing information, education, and support.
- The Center must be a collaborative effort of city and state agencies, the community, volunteers, and community based organizations.





Paradise Valley
FAMILY RESOURCE CENTER

PROVIDING TOOLS AND SUPPORT
TO BUILD STRONG FAMILIES

Paradise Valley | UNIFIED
SCHOOL DISTRICT
Celebrating world-class thinkers



Paradise Valley Family Resource Center offers a range of services and courses to help parents with children from birth to 5 years of age.

Open to all Phoenix residents, we offer free Parenting Classes on a variety of topics. Children play and develop skills while parents learn about the importance of parenting.

Currently Being Done in other Communities



Established in 1995, the Chandler CARE Center is a school-based family resource center providing access to medical, dental, counseling, and social services.

Promoting students' school readiness, attendance, and academic success by providing medical treatment, social services, parent education programs, and referrals.

Children's Medical Clinic
Chandler Children's Dental Clinic
Chandler CARE Center Food Bank
Family Resource Center
Benefits Enrollment Assistance

Mission:

To promote students' school readiness, attendance, and academic success by providing medical treatment, social services, parent education programs, and referrals.

From July 1, 2013—June 30, 2014

We served 36,166 individuals:

Medical: 3,021

Dental: 756

Food Bank: 21,143

FRC Programs: 1,327

Application

Assistance: 4,868

Other partners services: 4,821

Is there a need for a Community Resource Center in Scottsdale Unified School District?



SUSD Free % Reduced Lunch Eligibility – Nov 2014

ANASAZI	9.06%
ANLC	50.11%
ARCADIA	34.55%
CHAPARRAL	5.84%
CHEROKEE	6.97%
CHEYENNE	3.80%
COCHISE	7.53%
COCOPAH	8.36%
Copper RIDGE ES	2.93%
CORONADO	76.27%
DESERT CANYON E.S.	9.60%
DESERT CANYON M.S.	16.28%
DESERT MOUNTAIN	7.04%
ECC OAK	0.00%
HOHOKAM	71.29%
HOPI	11.31%
INGLESIDE	46.16%
KIVA	16.87%
LAGUNA	10.18%
MOHAVE	37.75%
MOUNTAINSIDE	9.31%
NAVAJO	60.77%
PIMA	48.78%
PUEBLO	19.37%
REDFIELD	18.70%
SAGUARO	25.32%
SEQUOYA	13.86%
SUPAI	80.44%
TAVAN	76.66%
TONALEA	82.53%
YAVAPAI	84.12%

Total district percentage is - **27.21%**

Arizona State University Survey Data

Survey conducted by Meg Bruening, PhD, MPH, RD *Assistant Professor ASU*

-Awarded a 2013 High Risk-High Reward grant from the National Institutes of Health.

Over 260 parents residing in 17 different zip codes in Scottsdale and surrounding areas responded to the survey

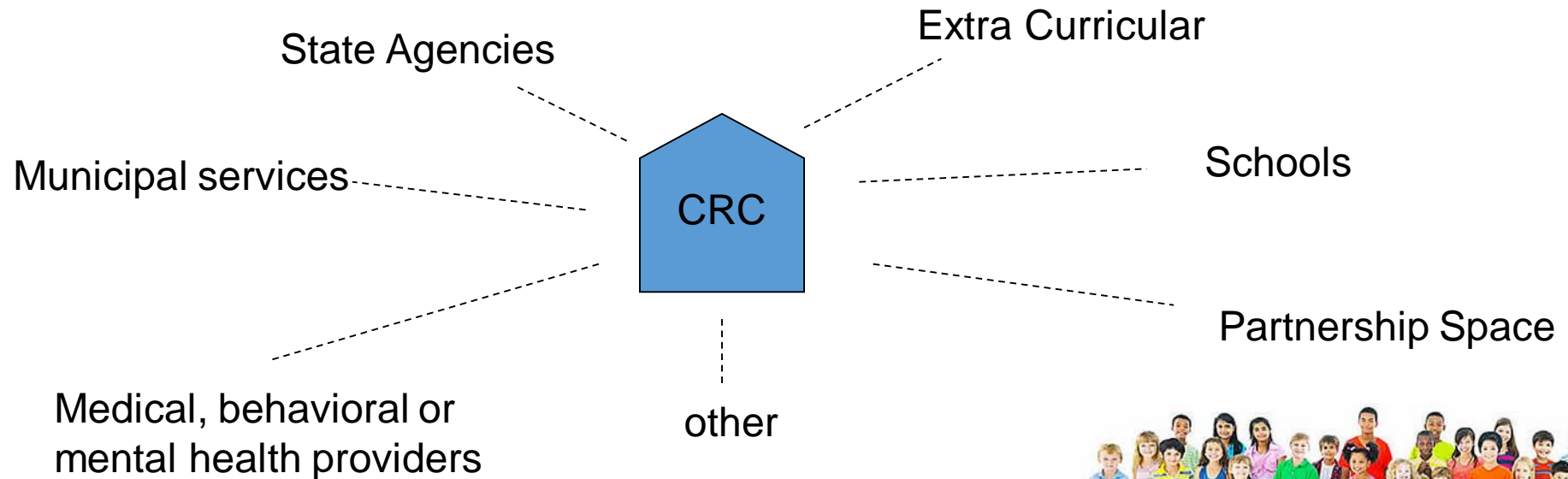
Top 3 needs:

- Tutoring/homework help (15.4%)
- Health clinic (15.2%)
- Food pantry/donations (12.7%)

The Function of a Community Based Service **Network**

(Services Provided or Leveraged by Community Resource Centers)

The CRC must develop and connect to a local “network” of service providers that families can access. These services may be provided on an in-kind basis, through on-site placement of staff, or through referral.



One
example...

Cultivating a Caring Community

A Community Garden provides opportunities for members of the community to work together, growing healthy food while learning from each other.



A garden serves as an important space for area residents, children, and local organizations to learn about growing food in a desert environment.

Individuals and groups can rent their own garden plot to grow produce for themselves or to donate to local food banks. The garden provides the opportunity to learn how to grow fresh and wholesome food while connecting with people of all ages and backgrounds.

Partners for a Community Resource Center in SUSD



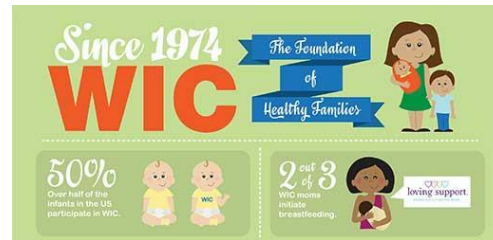
Fine Arts



Neighborhood Outreach Access to Health (NOAH)



University of Arizona



Next step

Determine if there is interest in nurturing partnerships to develop a Community Resource Center in SUSD at the 68 St. Facility (former Tonalea Elementary location)

- No additional cost to SUSD
- Facility use to protect investment
- Flexible to be relocated when school campus is rebuilt