



NORTHERN YORK COUNTY SCHOOL DISTRICT

# NORTHERN YORK COUNTY SCHOOL DISTRICT

## School Board Meeting Building Project Update

28 March 2023

SCHRADERGROUP

# DISCUSSION

- 01 MONTHLY PROGRESS REPORT
- 02 DESIGN UPDATE
- 03 NEXT STEPS

01

02

03

# 01 PROGRESS REPORT

MONTHLY UPDATES ON THE PROJECTS

## PAST MONTH PROGRESS REVIEW

# 01 DATA COLLECTION

- **SITE SURVEY**
  - Campus Boundary and Topographic Study progress drawing file received.
- **BUILDING SURVEY**
  - Northern Middle School: Building survey March 13 (in-service day); follow-up scheduled for April 5
  - Northern Elementary School: Interior 360 photography scheduled for April 5

# 01 SCHEMATIC DESIGN

## CAMPUS MASTER PLANNING

- Modify campus circulation to reduce congestion and improve flow on the campus during arrival and dismissal
- Separation of bus and parent drop-off for both schools

## NORTHERN ELEMENTARY SCHOOL

- On-going virtual and in-person meetings with the Principal and staff

## NORTHERN MIDDLE SCHOOL

- On-going Task Force meetings to review the design

# 02 DESIGN UPDATE

NORTHERN ELEMENTARY SCHOOL AND NORTHERN MIDDLE SCHOOL

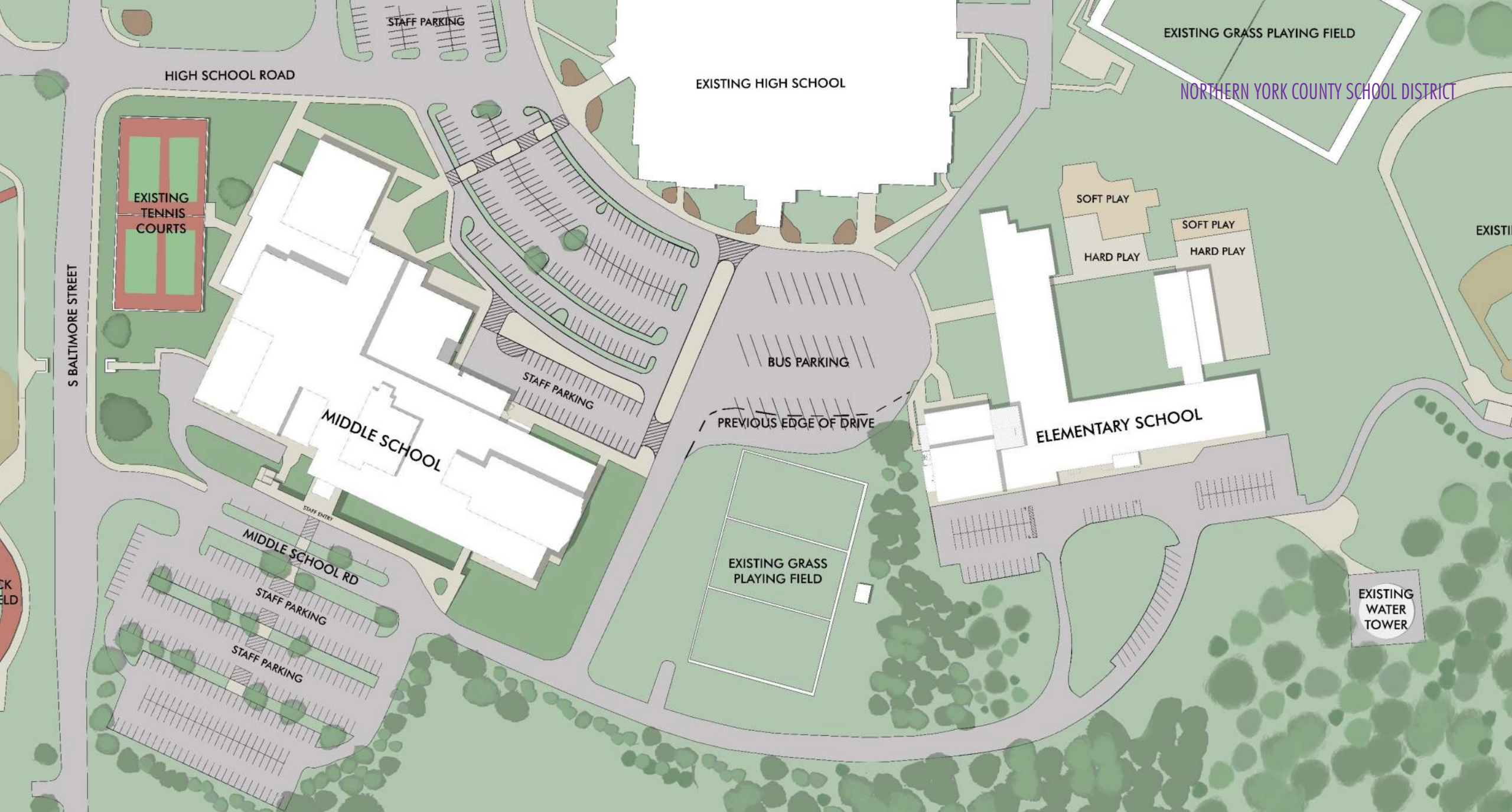
## SCHEMATIC DESIGN

NORTHERN YORK COUNTY SCHOOL DISTRICT

# CAMPUS PLANNING

CONCEPTUAL DESIGN

SCHRADERGROUP

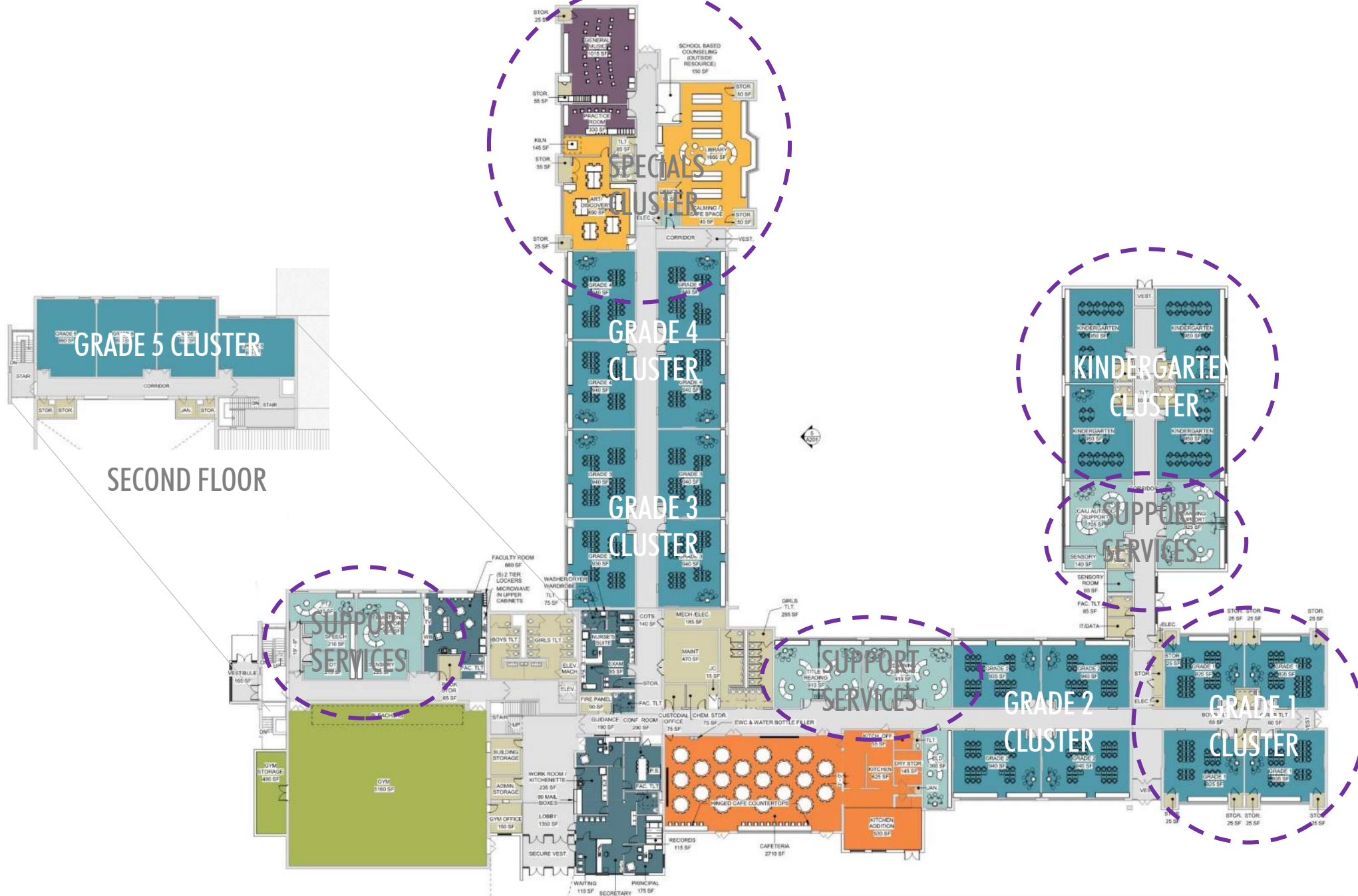




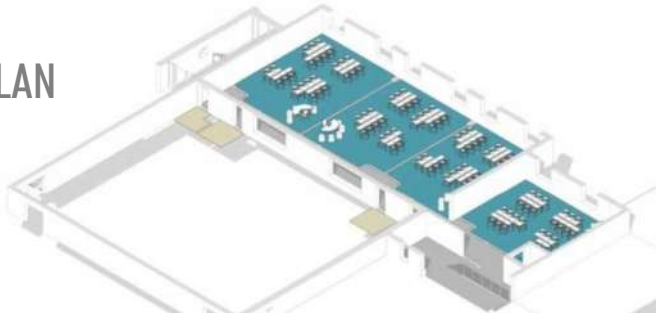
# PROJECT UPDATE

SCHEMATIC DESIGN

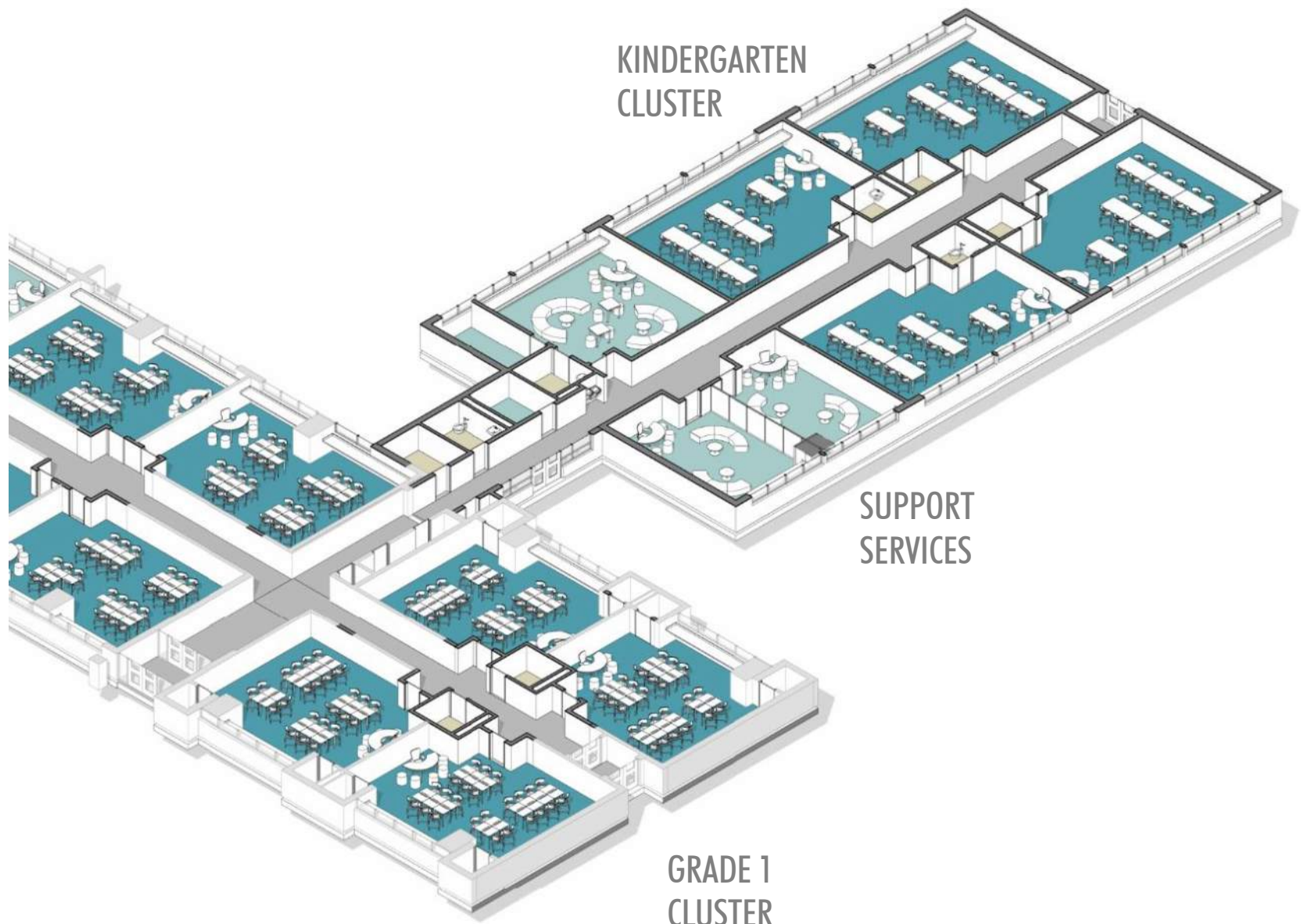
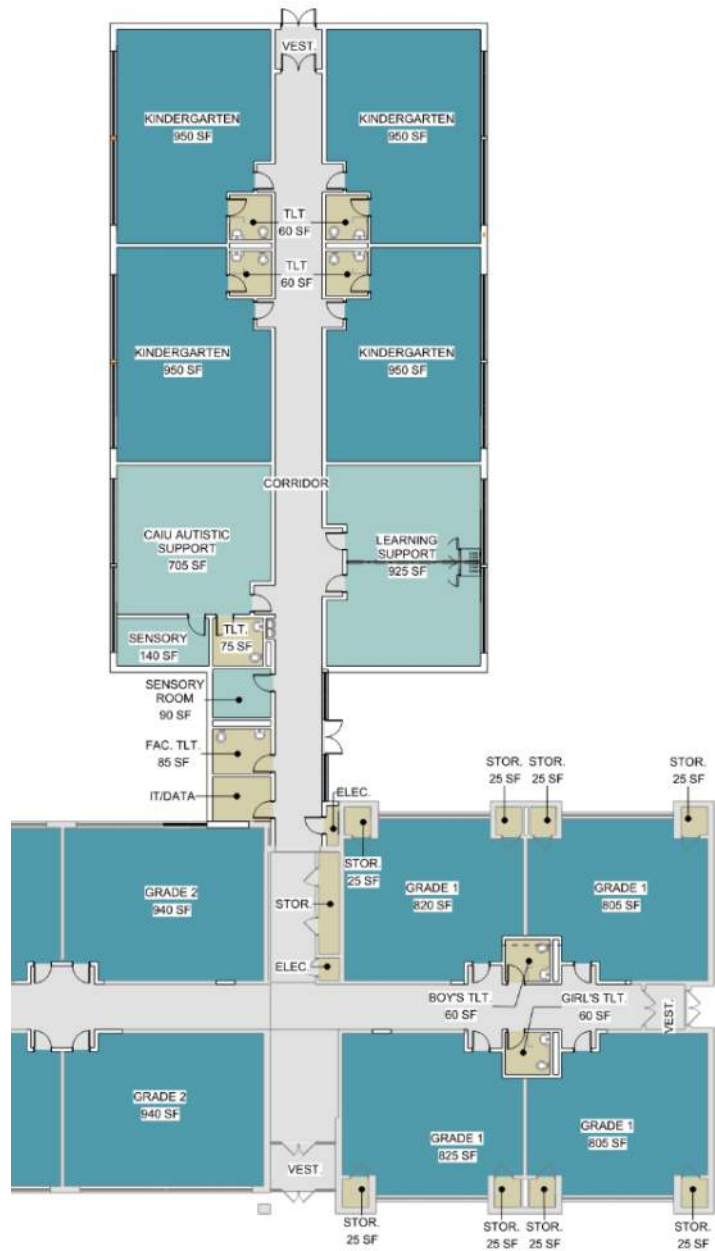
## NORTHERN ELEMENTARY SCHOOL

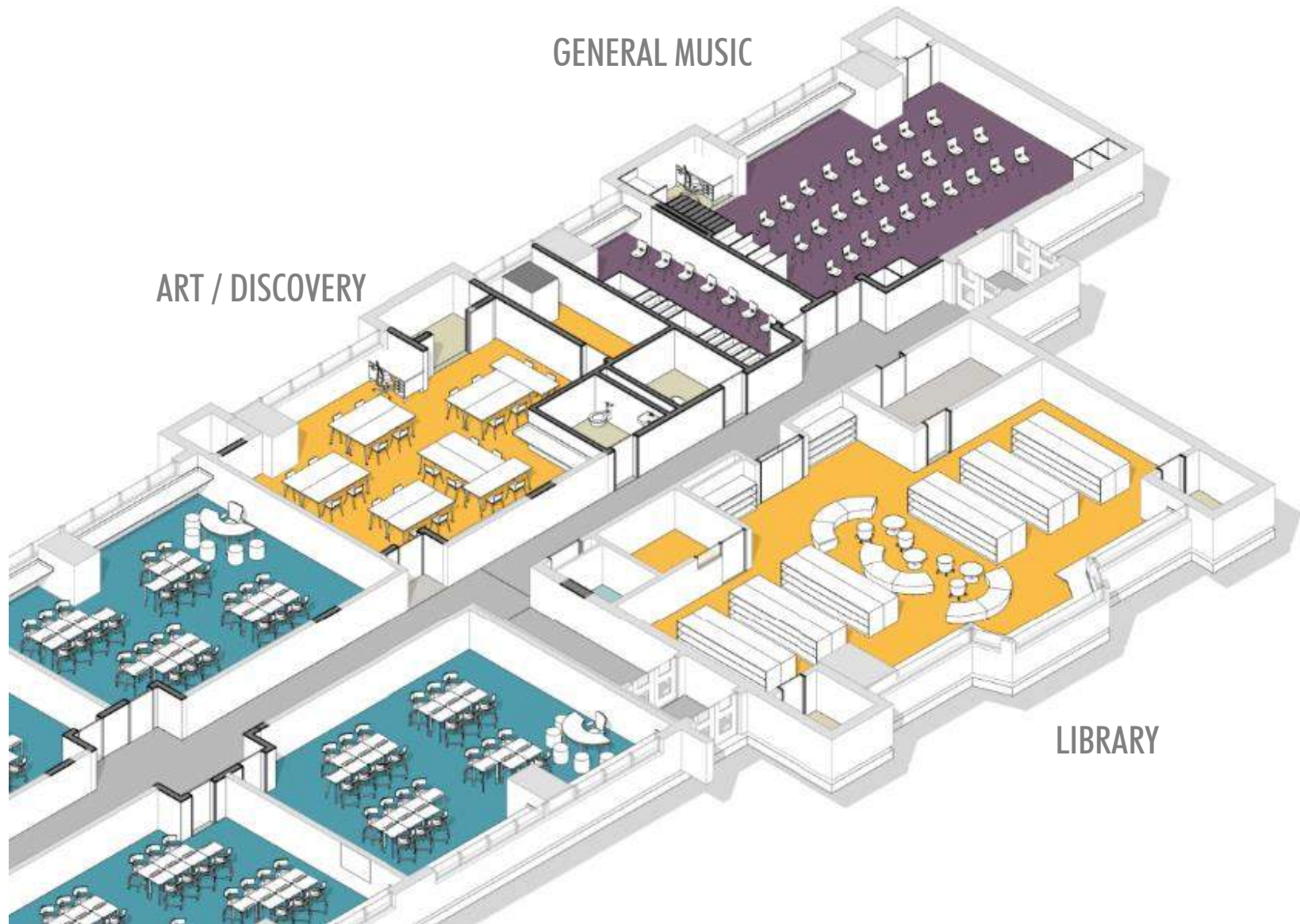
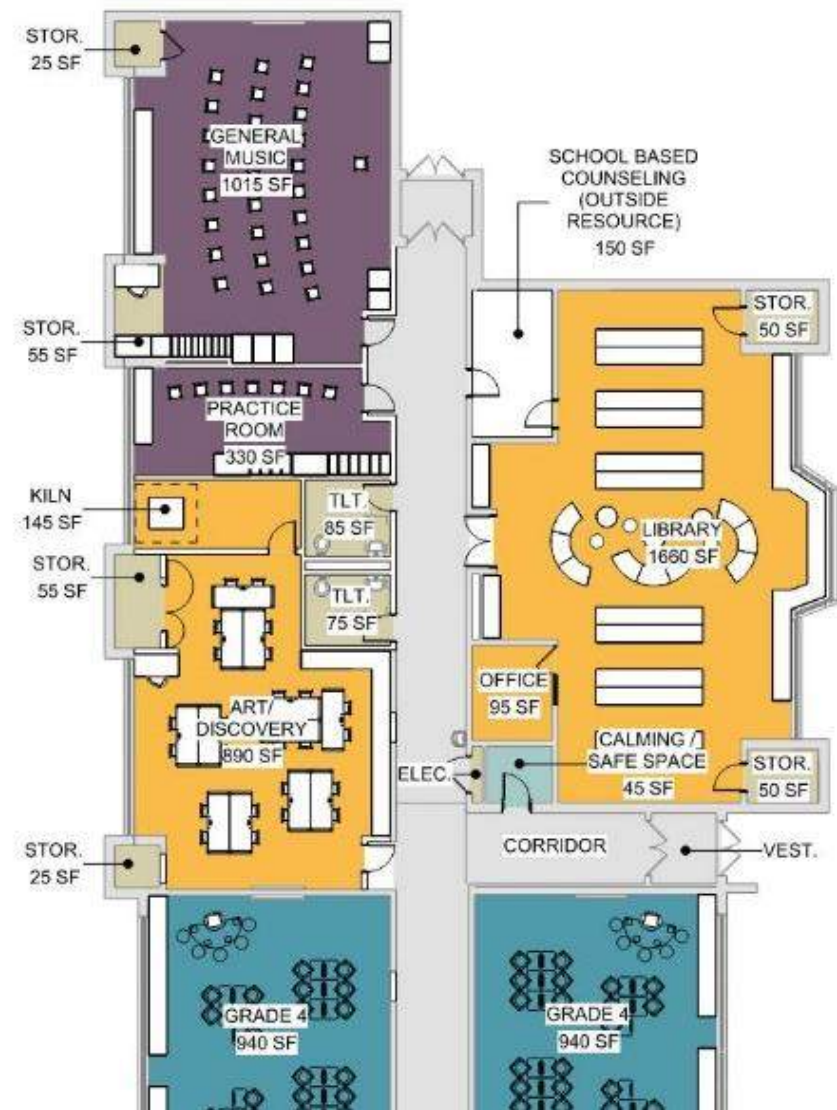


PROPOSED SECOND PLAN

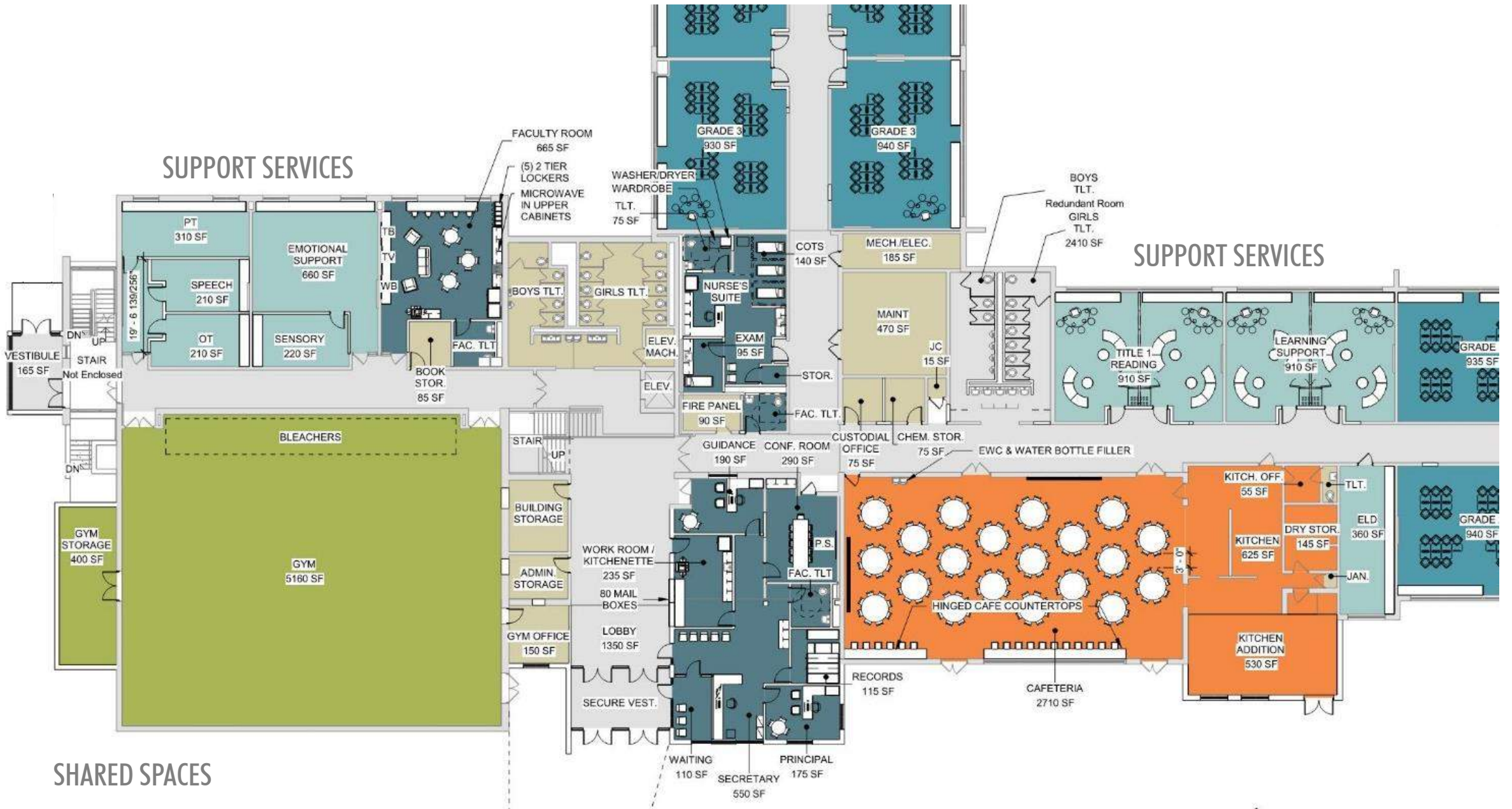


PROPOSED FLOOR PLAN





SPECIALS CLUSTER



NORTHERN YORK COUNTY SCHOOL DISTRICT

# PROJECT UPDATE

**SCHEMATIC DESIGN**

## NORTHERN MIDDLE SCHOOL

# BREAK-OUT SESSION #1 — BUILDING ADJACENCIES

## 10 Take-aways:

1. Flip the main entrance to face the campus / connectivity to the high school
2. Cafeteria moved; make a volume out of the space
3. Media/STEAM spaces together
4. Gym/PE areas all consolidated
5. Public spaces (food, athletics and auditorium) — easy access that can be separated from the rest of the building
6. Dining Commons should be used all day and as a public evening event area



# BREAK-OUT SESSION #1 — BUILDING ADJACENCIES

## 10 Take-aways (continued):

7. Admin, nurse and counseling together
8. Teams together, 6<sup>th</sup> grade separate on lower level
9. Connect the building vertically to tie the building together end to end/side to side
10. Improve natural light at the interior of the building

- Reorient main entrance
- Relocate dining commons
  - Separate from academic wing
  - Serve as a an event are adjacent to gyms
- Relocate Tech Ed
- Courtyard becomes indoor space

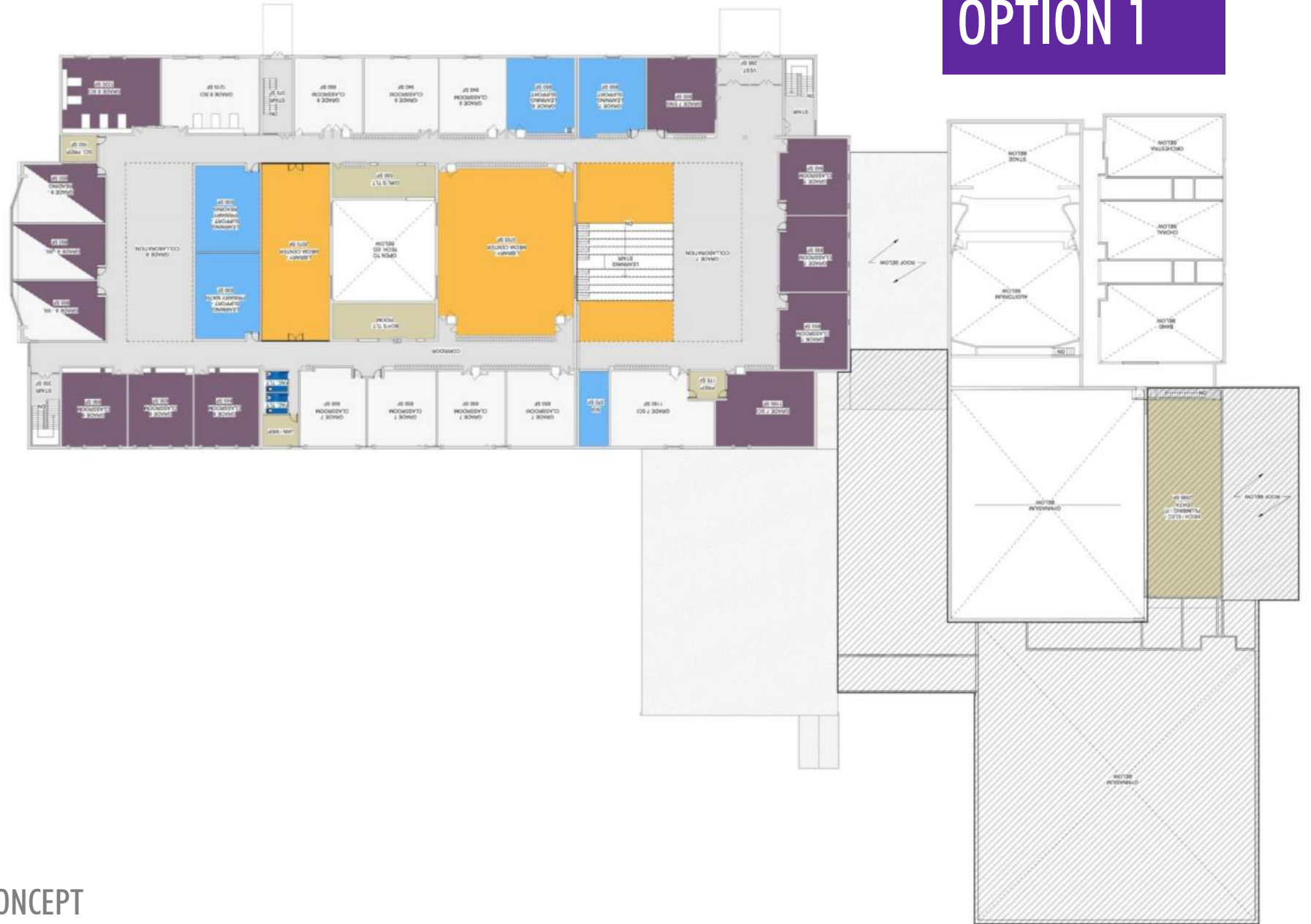
# OPTION 1



FIRST FLOOR CONCEPT

- Learning studios together by grade level
- Media center above creative studies and art spaces
- Guidance suite becomes 7<sup>th</sup> and 8<sup>th</sup> collaboration area

# OPTION 1

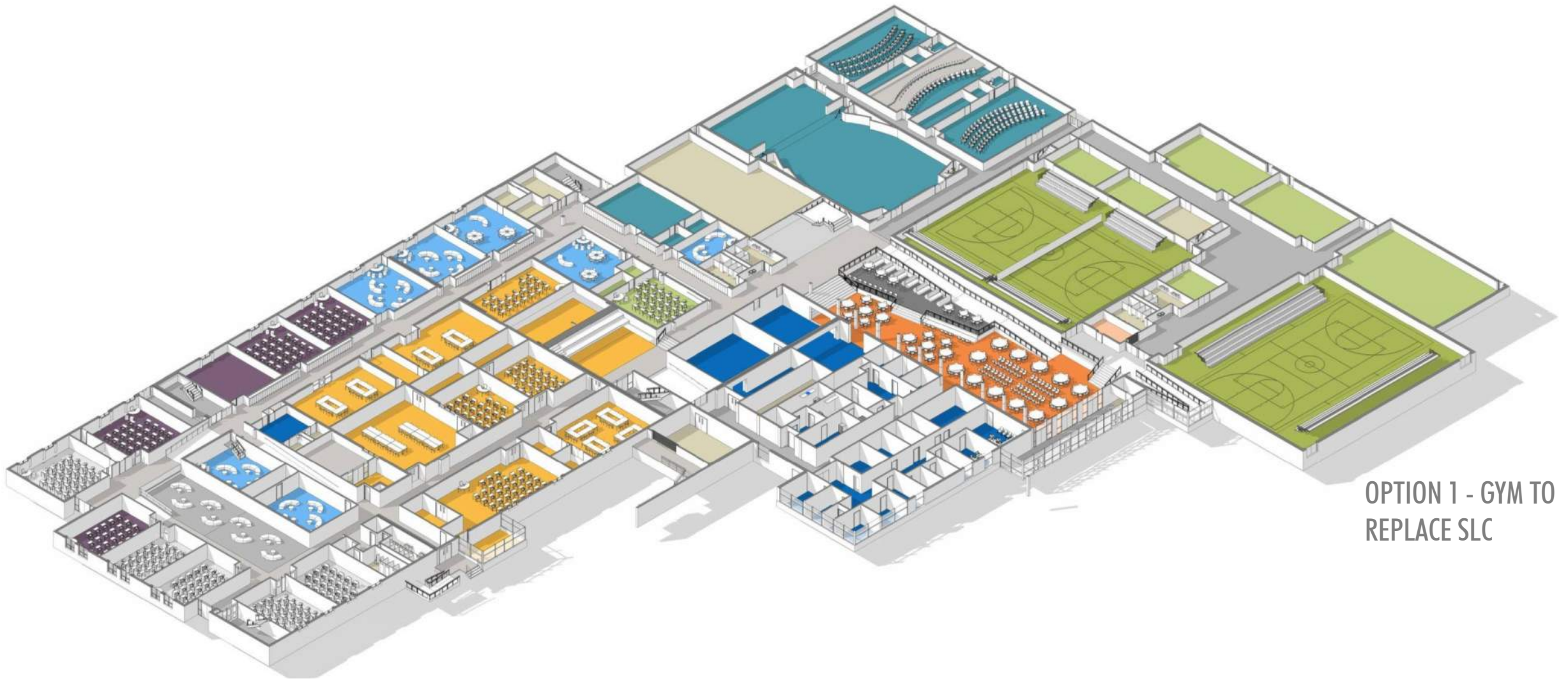


SECOND FLOOR CONCEPT

SCHRADERGROUP



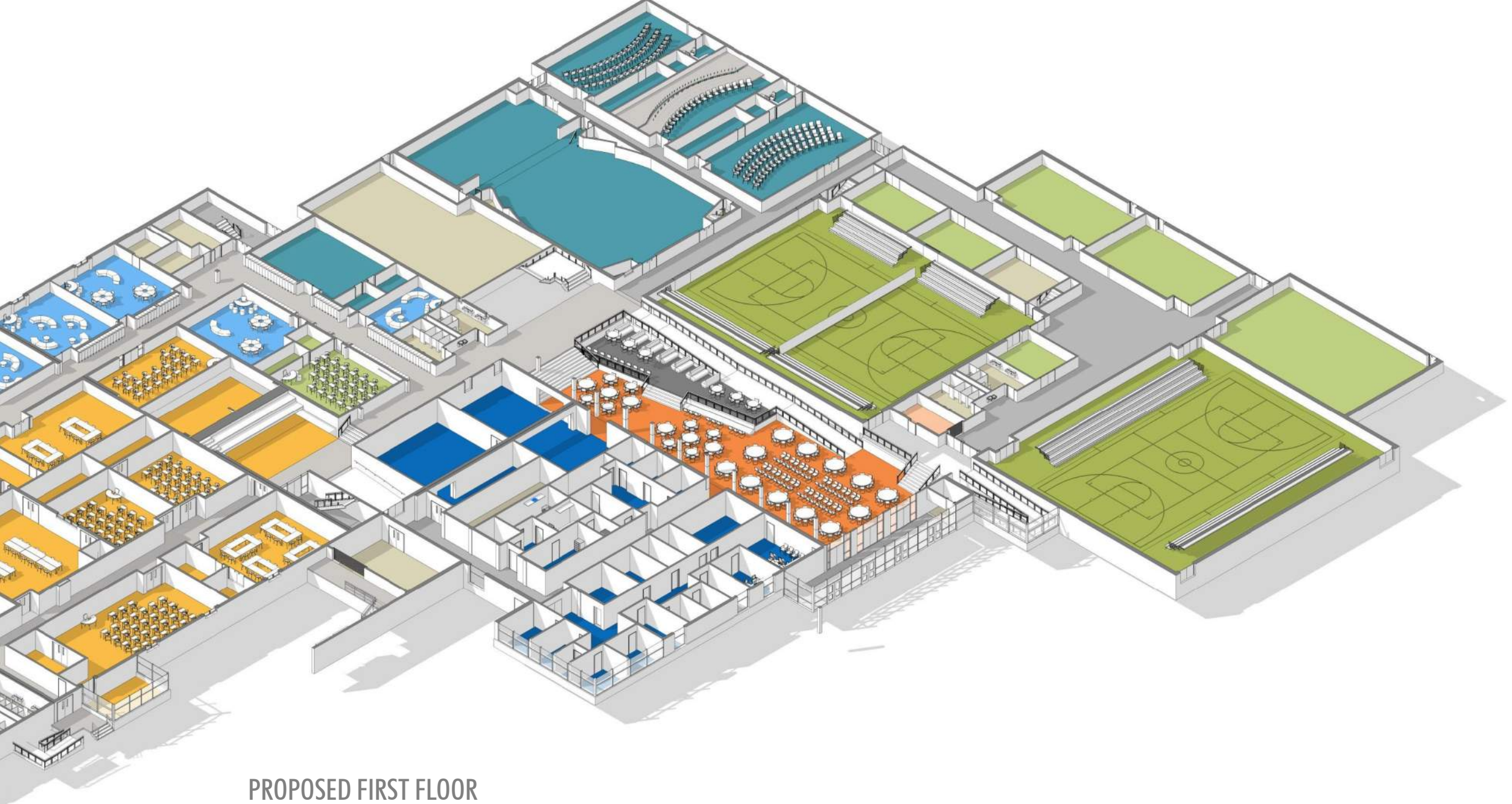
PROPOSED FIRST FLOOR PLAN



OPTION 1 - GYM TO  
REPLACE SLC

PROPOSED FIRST FLOOR

SCHRADERGROUP



PROPOSED FIRST FLOOR

SCHRADERGROUP

# DINING COMMONS

NORTHERN YORK COUNTY SCHOOL DISTRICT



SCHRADERGROUP

# CONNECTION TO LIBRARY COMMONS

NORTHERN YORK COUNTY SCHOOL DISTRICT





# LIBRARY COMMONS

NORTHERN YORK COUNTY SCHOOL DISTRICT

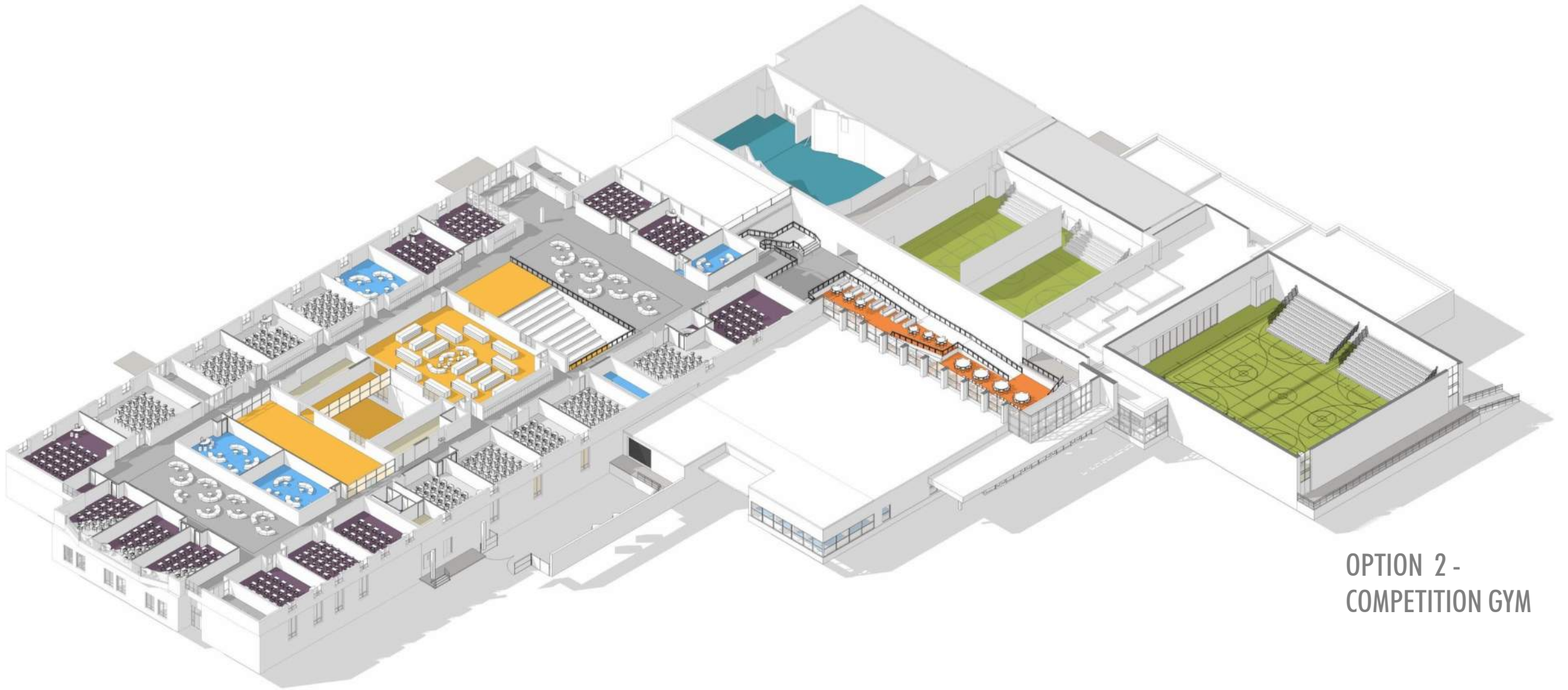


# LEARNING STAIR

NORTHERN YORK COUNTY SCHOOL DISTRICT



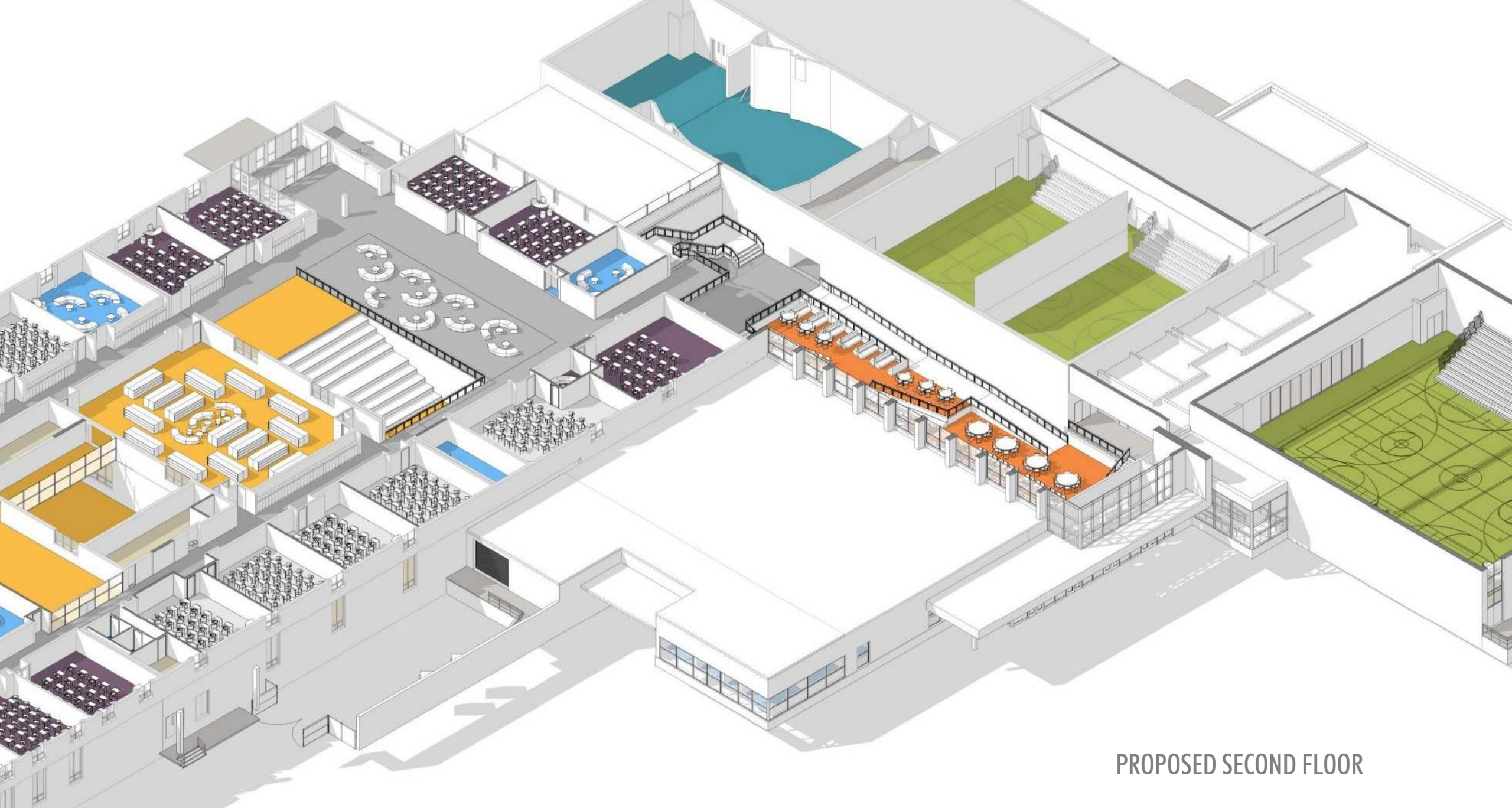
SCHRADERGROUP



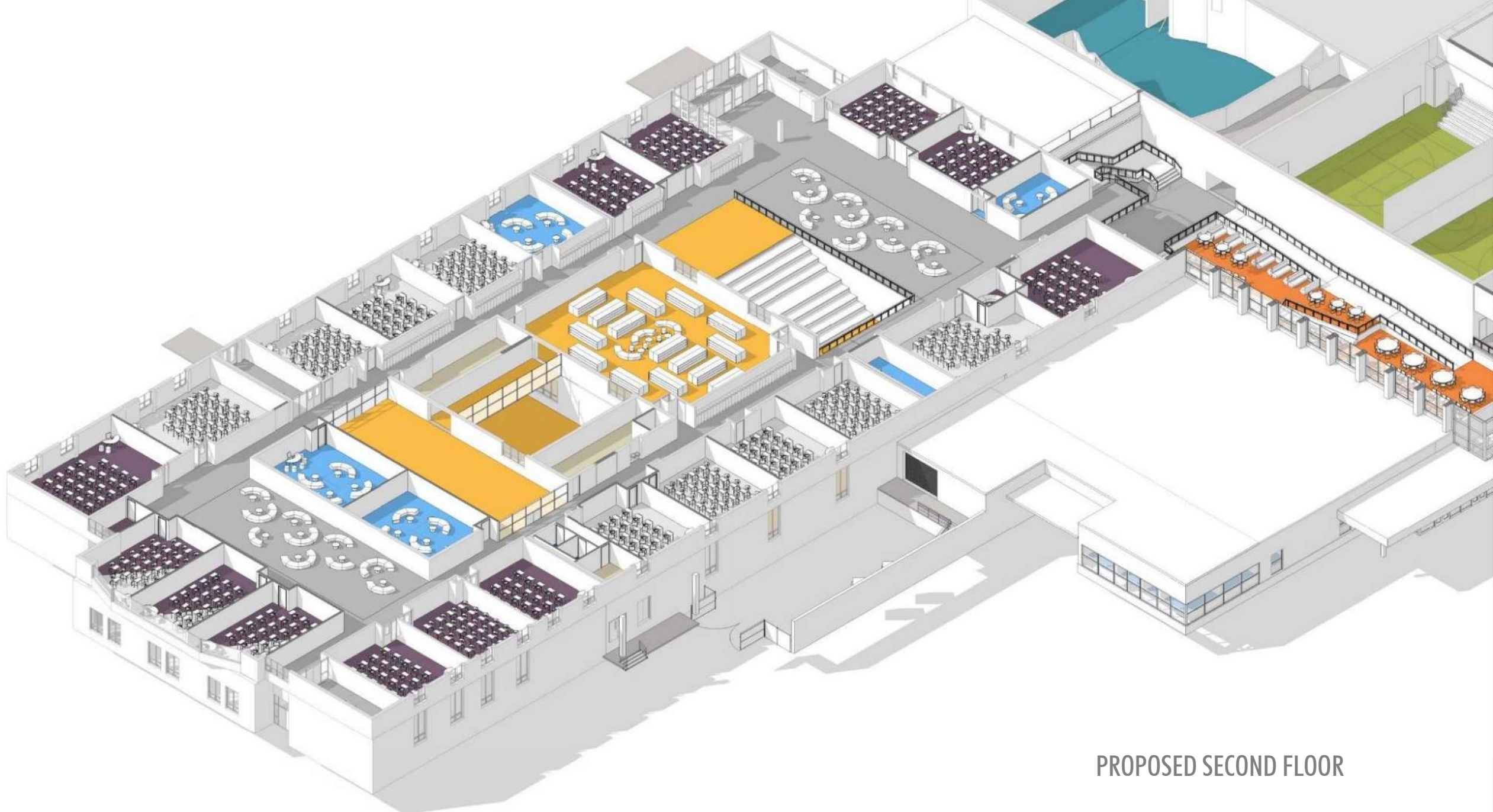
OPTION 2 -  
COMPETITION GYM

PROPOSED SECOND FLOOR

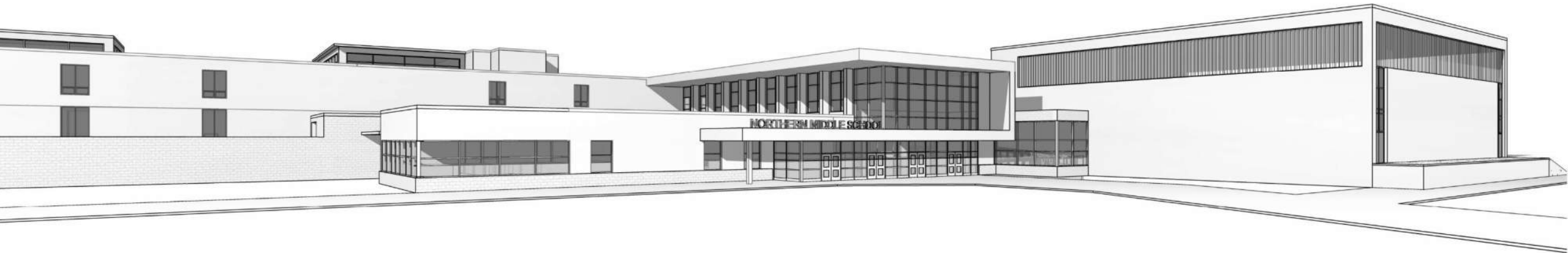
SCHRADERGROUP



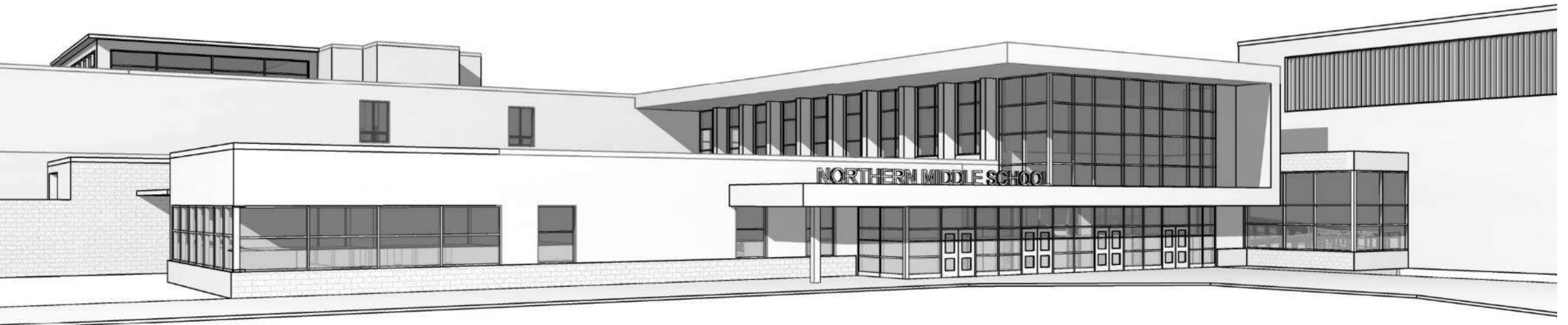
PROPOSED SECOND FLOOR

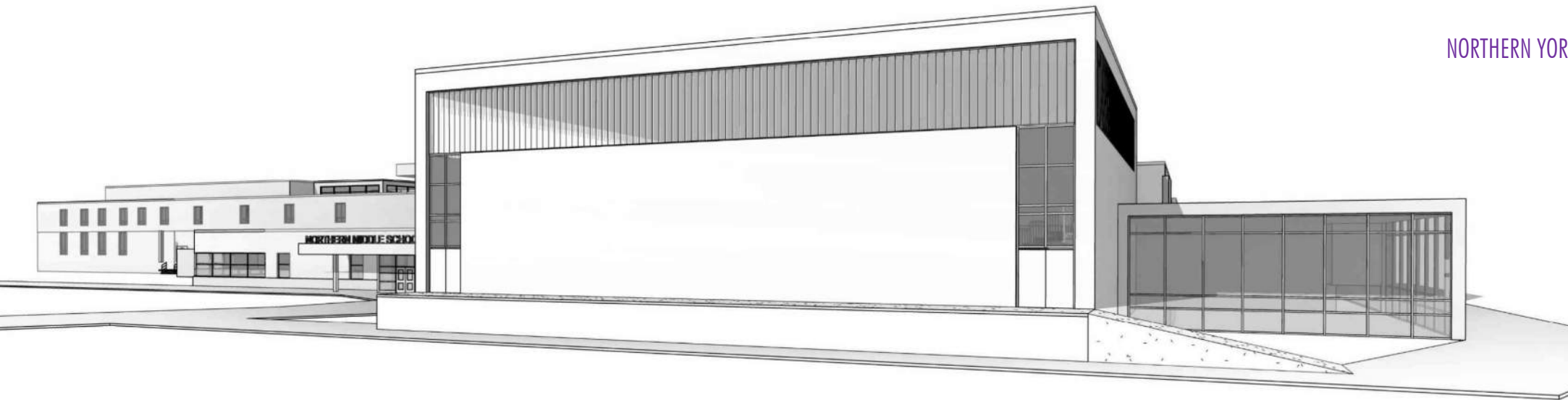


PROPOSED SECOND FLOOR

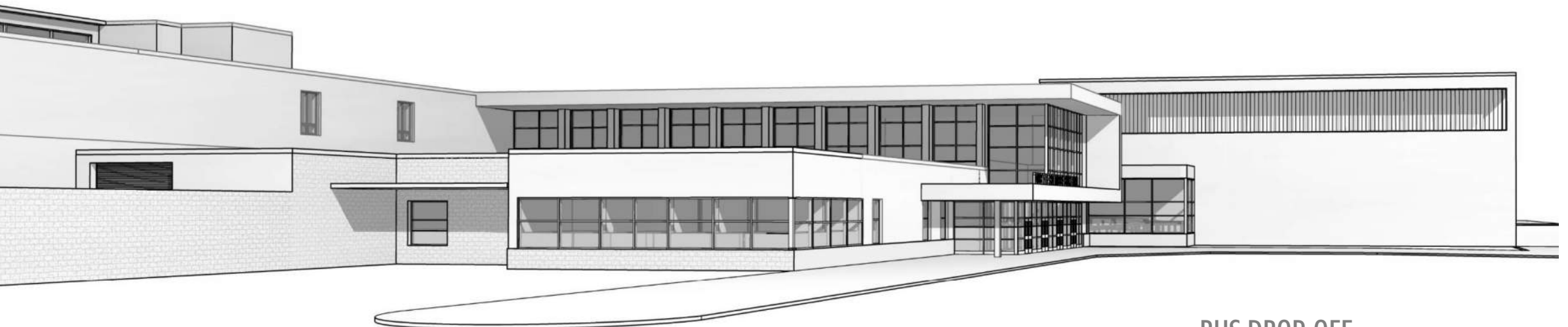


MAIN ENTRANCE





GYM AND FITNESS ROOM



BUS DROP-OFF

# 03 NEXT STEPS

TRANSPARENCY THROUGHOUT THE PROCESS

## UPCOMING MONTH REVIEW



# 03 NEXT STEPS

## **SITE AND BUILDING DESIGNS – APRIL 2023**

- **Prepare Sketch Plan of campus to prepare for Land Development submission**
- **Northern Elementary School - Issue Schematic Design drawings to the cost estimator**
- **Finalize Northern Middle School Schematic Design**



NORTHERN YORK COUNTY SCHOOL DISTRICT

# NORTHERN YORK COUNTY SCHOOL DISTRICT

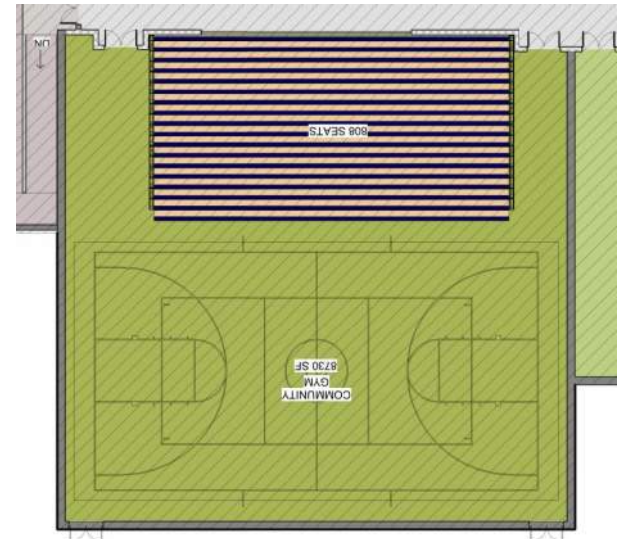
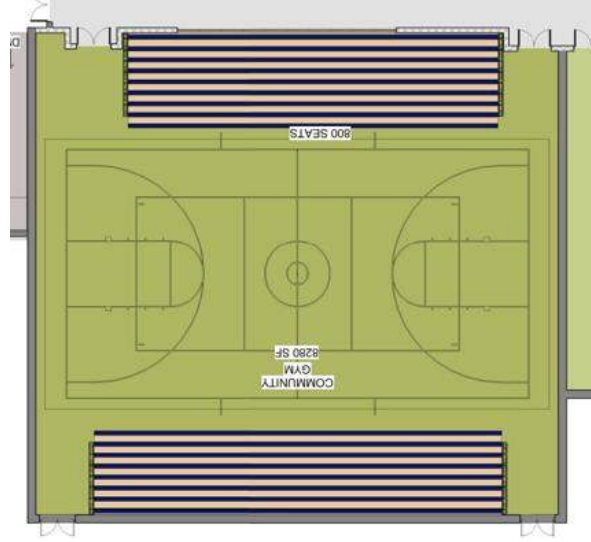
**THANK YOU!**

SCHRADERGROUP

**GYMNASIUM OPTIONS:**

**SLC REPLACEMENT GYM**

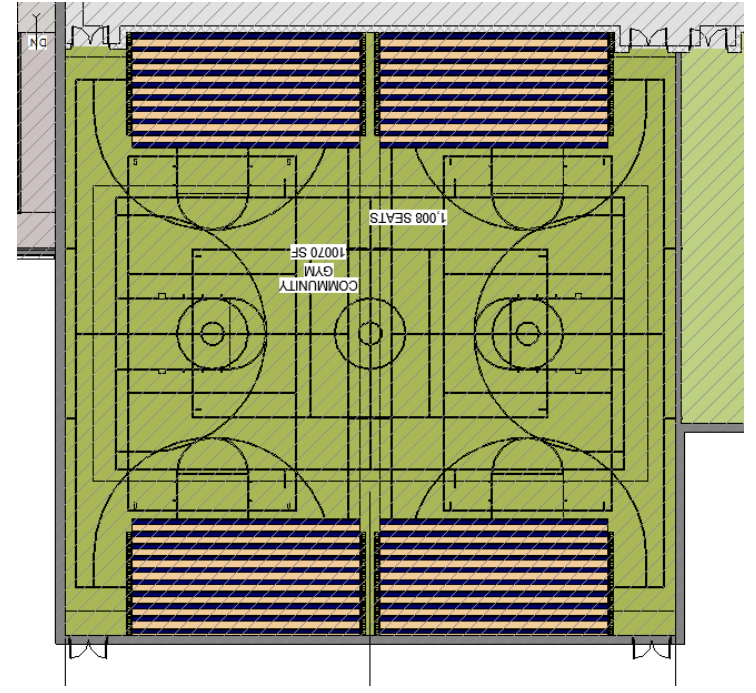
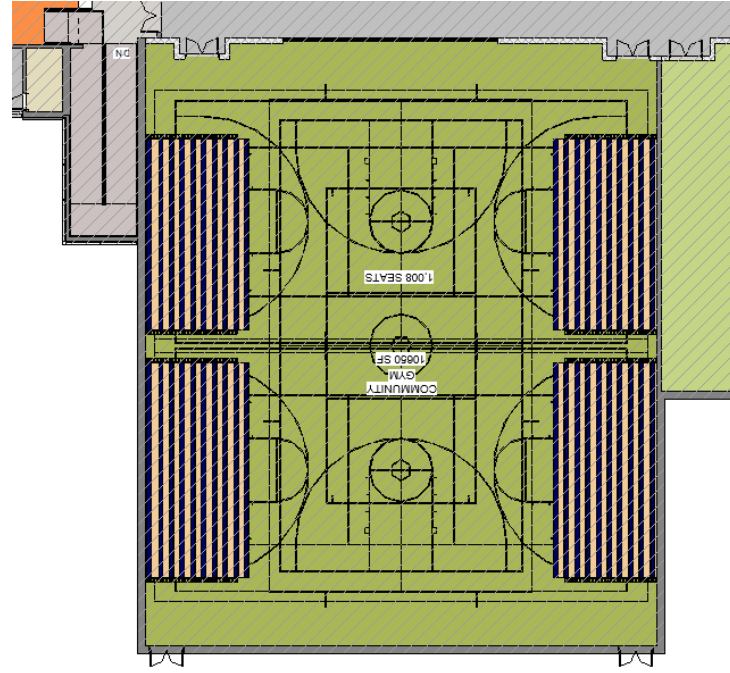
800 SEATS  
GYM S.F.: 8280 — 8730 S.F.



SLC REPLACEMENT GYM

**COMPETITION GYM**

1000 SEATS  
GYM S.F.: 10,000 S.F.



COMPETITION GYM