



NORTHERN YORK COUNTY SCHOOL DISTRICT

NORTHERN YORK COUNTY SCHOOL DISTRICT

School Board Meeting Building Project Update

24 January 2023

SCHRADERGROUP

DISCUSSION

- 01 MONTHLY PROGRESS REPORT
- 02 DESIGN UPDATE
- 03 OTHER CONSIDERATIONS
- 04 NEXT STEPS

01

02

03

04

01 PROGRESS REPORT

MONTHLY UPDATES ON THE PROJECTS

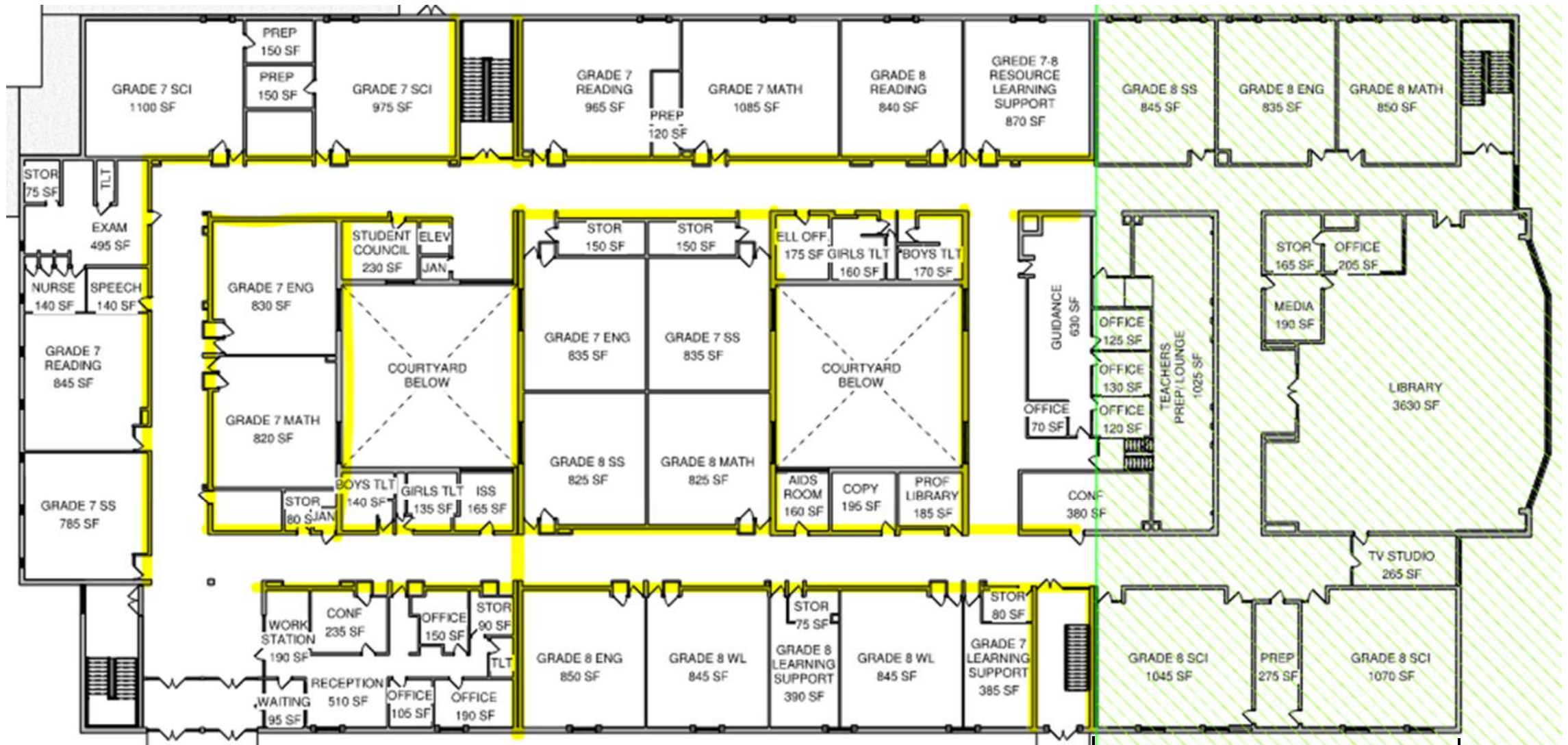
PAST MONTH PROGRESS REVIEW

01 PROGRESS REPORT

- **Data Collection**
 - Site survey: January Board approval for the boundary and topographic survey of the campus including subsurface utility investigation and wetland investigation services. Separate costs provided for each side of road bisecting the campus.
- **3-D Building Models**
 - Northern Elementary School - complete
 - Northern Middle School - complete

WALLS HIGHLIGHTED IN YELLOW ARE BEARING WALLS

NORTHERN YORK COUNTY SCHOOL DISTRICT



FIRST FLOOR

STEEL FRAMED CONSTRUCTION

02 DESIGN UPDATE

NORTHERN ELEMENTARY SCHOOL AND NORTHERN MIDDLE SCHOOL

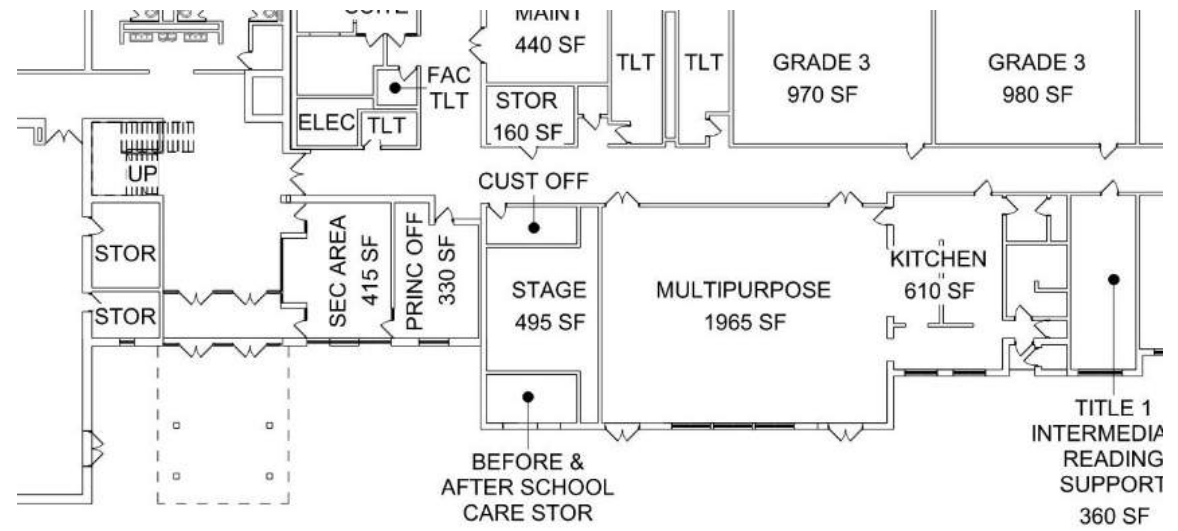
PROGRAMMING

02 NORTHERN ELEMENTARY SCHOOL PROGRAMMING AND PLANNING

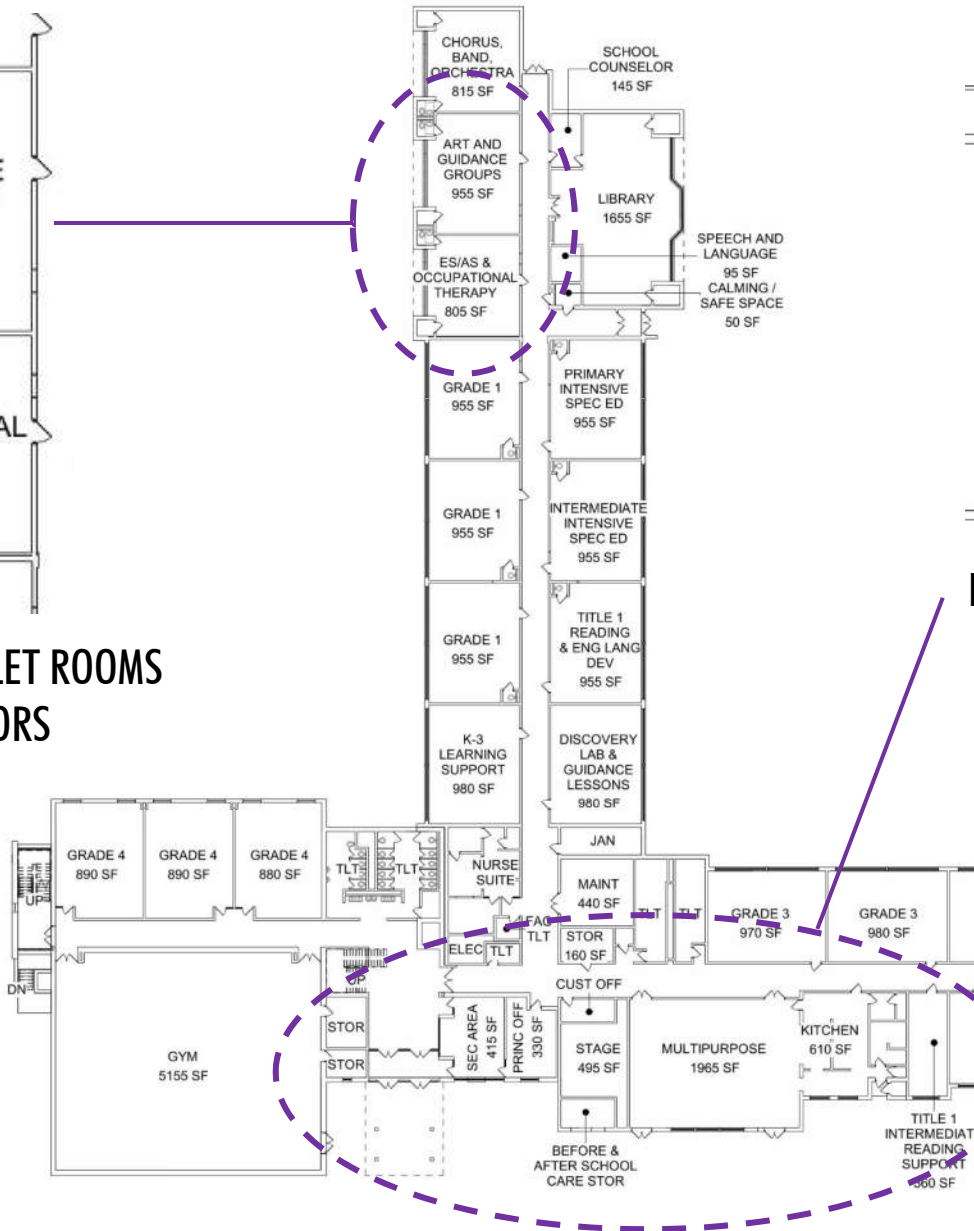
- **Week of January 9th - NYCSD internal design discussion**
- **January 17 – SG meeting with Northern Elementary School Principal**
- **January 23 – SG meeting with Northern Elementary School Principal**
- **January 24 – Updated drawings submitted to Principal for review**



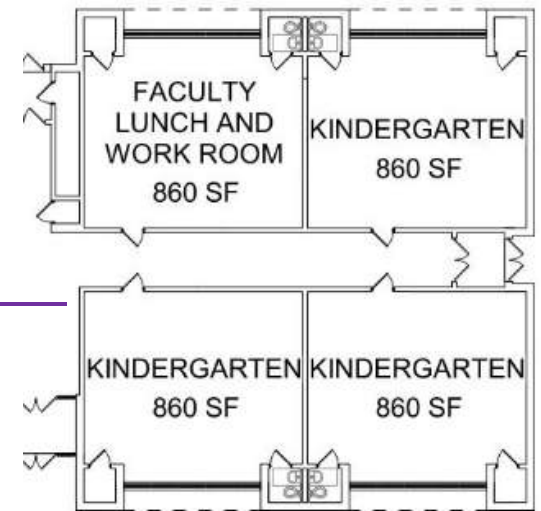
CLASSROOM TOILET ROOMS & ENTRANCE DOORS



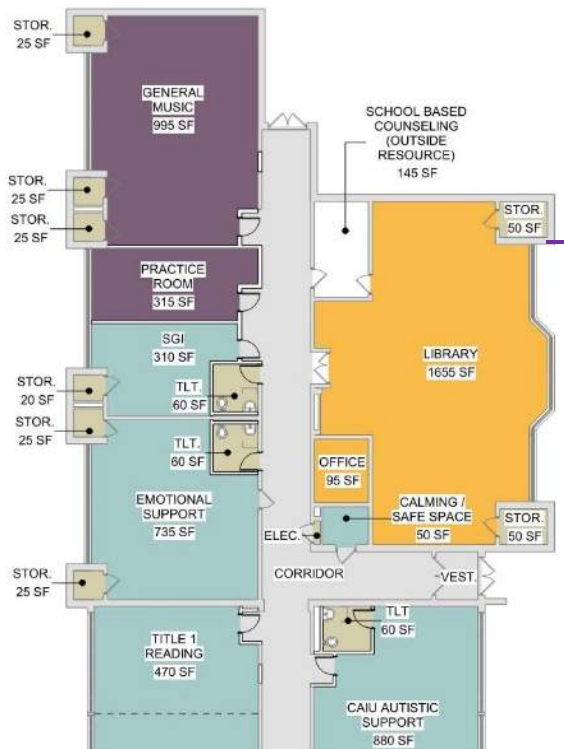
EXISTING ADMINISTRATION AND MULTI-PURPOSE ROOM



EXISTING FIRST FLOOR



CLASSROOM TOILET ROOMS & ENTRANCE DOORS



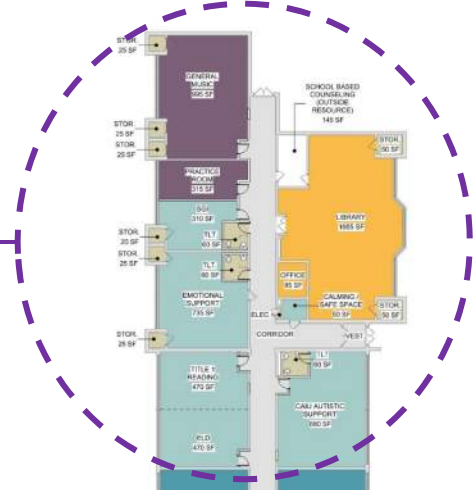
SCHOOL BASED COUNSELING (OUTSIDE RESOURCE) 145 SF

LIBRARY 1655 SF

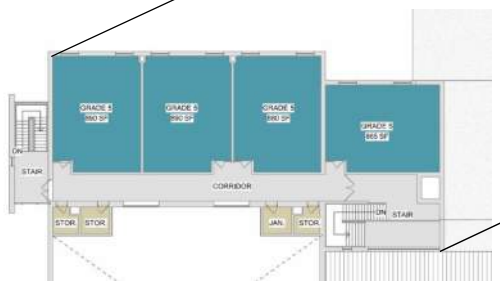
OFFICE 95 SF

CALMING / SAFE SPACE 50 SF

CAIU AUTISTIC SUPPORT 880 SF



CLASSROOM TOILET ROOMS & ENTRANCE DOORS



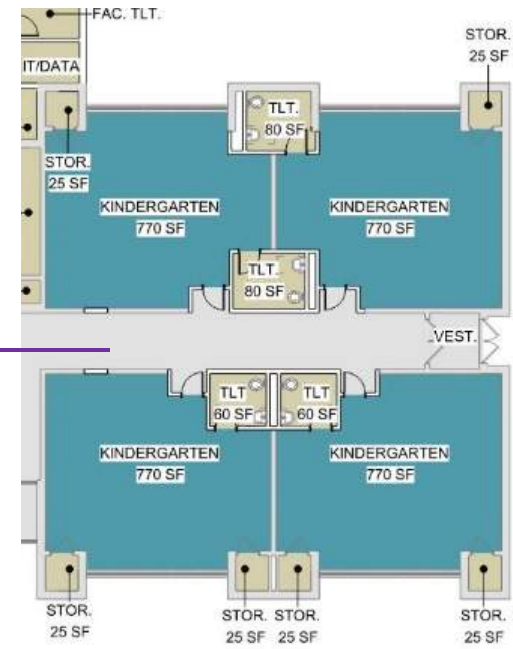
PROPOSED SECOND FLOOR



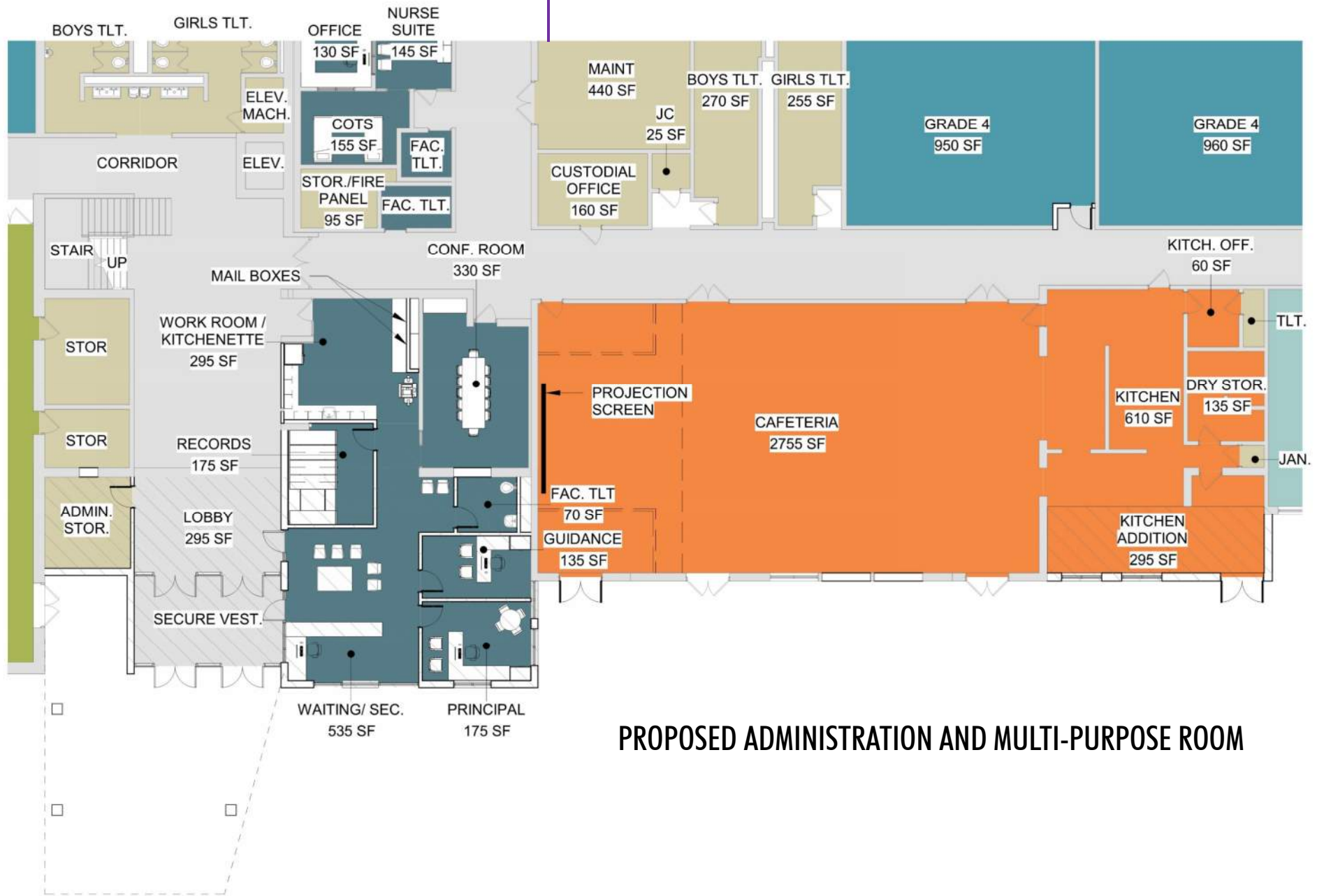
PROPOSED FIRST FLOOR

4 CLASSROOMS / GRADE LEVEL (4 DEEP):

- 4 CLASSROOM ADDITION W/ SUPPORT SPACES (SPECIALS SHARE CLASSROOM SPACE)
- 6 CLASSROOM ADDITION W/ SUPPORT SPACES (DEDICATED ROOMS FOR SPECIALS)



CLASSROOM TOILET ROOM OPTIONS



PROPOSED ADMINISTRATION AND MULTI-PURPOSE ROOM

02 NORTHERN MIDDLE SCHOOL PROGRAMMING AND PLANNING

- **January 18 – Final program review with Principal to confirm spaces**
- **January 19 - Steering Committee Meeting #2 Planning Workshop**



STEERING COMMITTEE MEETING #2

6:00 - 6:05pm

6:05 – 6:10pm

6:10 - 6:20pm

6:20 – 6:40pm

6:40 – 7:00pm

7:00 – 7:10pm

7:10 – 7:30pm

7:30 – 7:40pm

7:40 – 7:45pm

Welcome and Introductions

Review of Visioning Session

Space Vocabulary

Virtual Tour

Break-out Session #1 - Building

Report out

Break-out Session #2 – Site

Report out

Comments/Closing Thoughts

MTN. VIEW (CVSD) AND BERMUDIAN SPRINGS SCHOOL SITE VISITS

BUILDING PROGRAM CONFIRMATION WORKSHOP

STEERING COMMITTEE MEETING #1: DISTRICT-WIDE PLANNING AND VISIONING

STEERING COMMITTEE #2: VIRTUAL TOURS AND DESIGN WORKSHOP

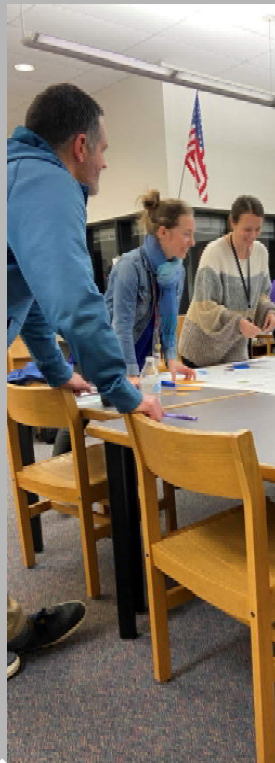
STEERING COMMITTEE #3: SCHEMATIC DESIGN CONCEPT

SCHEMATIC DESIGN ESTIMATING

BOARD PRESENTATION



Northern Middle School Program	
November 2022	
SPACE DESCRIPTION	
1,200	planned students grades 6-8
1,438	core capacity
1	CORE STUDENT LEARNING SPACES
1.10	Core Academics (3 teams of 4 classes)
1.10.1	6th Grade Team English, Math, Social Studies, Reading Science Lab Classroom/Collaboration Space
1.10.2	7th Grade Team English, Math, Social Studies, Reading Science Lab Classroom/Collaboration Space
1.10.3	8th Grade Team English, Math, Social Studies, Reading Science Lab Classroom/Collaboration Space
	Subtotal
1.20	Academic Support
1.20.1	Instructional Storage
1.20.2	Science Storage - Prep Room
1.20.3	Student Toilets
	Subtotal
1.30	Learning Support/Special Education
1.30.1	Learning Support
1.30.2	Learning Support - Primary Math
1.30.3	Learning Support - Primary Reading
1.30.4	Autistic Support
1.30.5	Emotional Support
1.30.6	Sensory Room
1.30.7	Life Skills Instruction Space
1.30.8	Intensive Learning Support
1.30.9	Gifted
1.30.10	Speech and OT/PT



	\$ 10,00
	\$ 9,50
	\$ 4,35
	\$ 65
	\$ 77,00
	\$
	\$
	\$ 6
	\$ 8
	\$
	\$ 12
	\$ 3,43
	\$ 9
	\$ 2
	\$ 26
	\$ 25
	\$ 1,70
	\$
	\$ 20
	\$ 50
	\$ 17
	\$ 6
	\$ 1
	\$ 2
	\$ 65
	\$ 10
	\$ 19
	\$ 22
	\$ 5
	\$ 1,92
	\$ 4,23
	\$ 1,40
	\$ 15,74
	\$ 92,74



SCHEMATIC DESIGN PROCESS

Aug. 2 & 4, 2022

November 11

December 15

Jan. 19, 2023

February 9

February 13-24

February 28
March 28

changing learning styles

and associated space type

NORTHERN YORK COUNTY SCHOOL DISTRICT

LEARNING TYPE

SPACE TYPE



- **TRADITIONAL INSTRUCTION**

- **MULTIPLE SIZED INSTRUCTIONAL SPACE**



- **ONE-ON-ONE**

- **SMALL GROUP WORK SPACES**



- **RESEARCH/ INVESTIGATE**

- **OPEN RESOURCE/ MEDIA CENTERS**



- **MAKE/ DEVELOP**

- **LARGE GROUP PROJECT AREAS**



- **PRESENT/ REPORT OUT**

- **PRESENTATION AREAS**



- **COMMUNITY/ INTERNAL COMMUNITY**

- **FULL-SIZED ACTIVITY AREAS**

changing learning environments

example spaces – middle school

NORTHERN YORK COUNTY SCHOOL DISTRICT

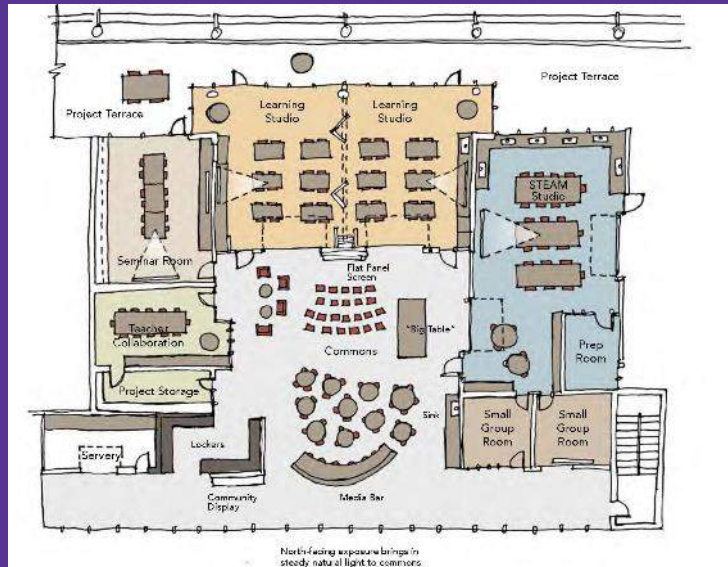


PRESENTATION



COMMONS

LEARNING COMMUNITIES



MEDIA/RESEARCH CENTERS



TEAM ROOMS



STE(A)M AREAS



PROJECT AREAS

HOLLAND MIDDLE SCHOOL

Council Rock School District

NORTHERN YORK COUNTY SCHOOL DISTRICT

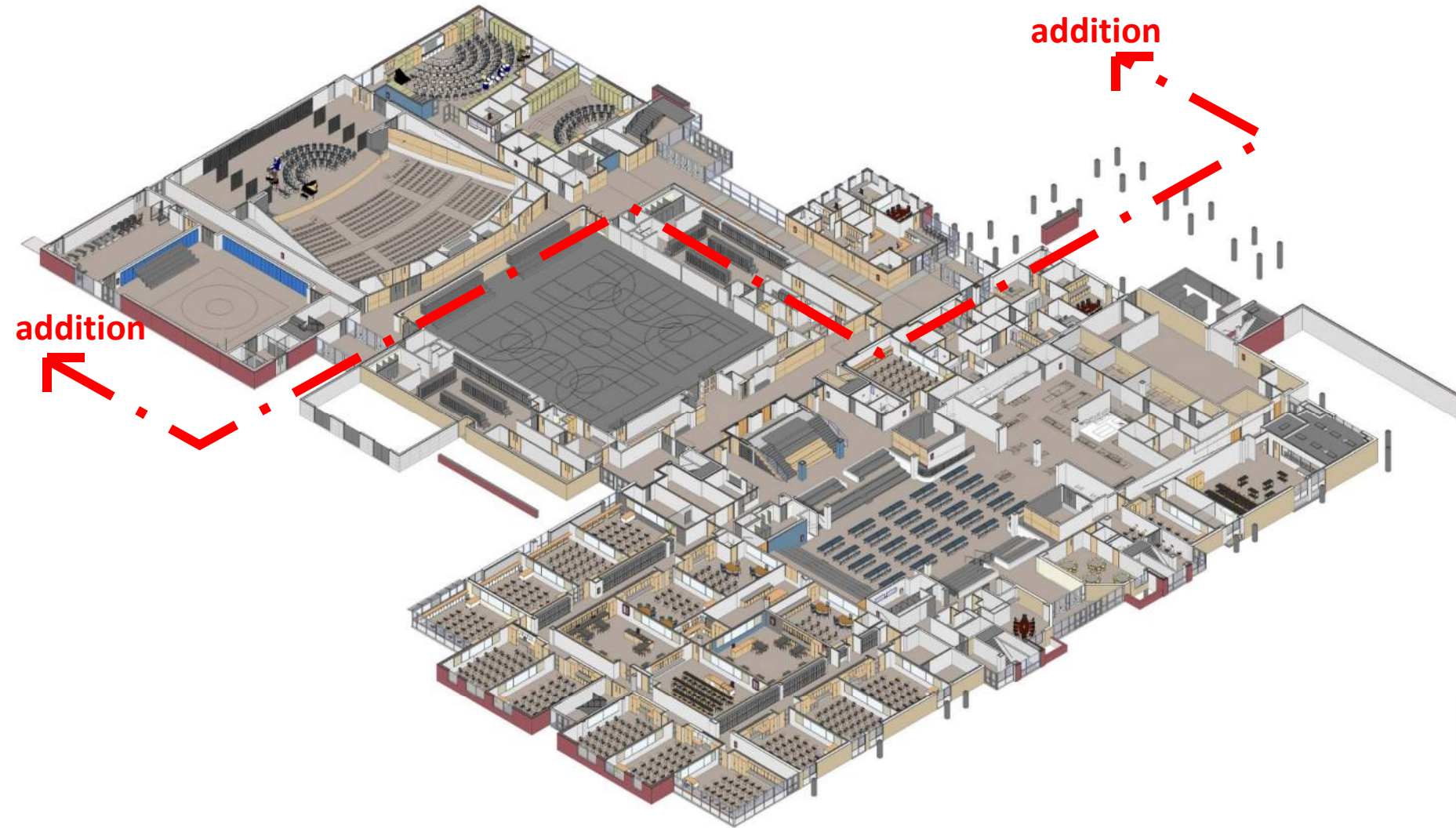


plan highlights

first floor

- Share core as hub of all circulation
- Learning stair connection through from dining to media resource areas
- 750 seat performance auditorium
- Community gymnasium
- Team structure classroom and science room clusters
- Clear flow-through from parent drop off to bus drop off

NORTHERN YORK COUNTY SCHOOL DISTRICT

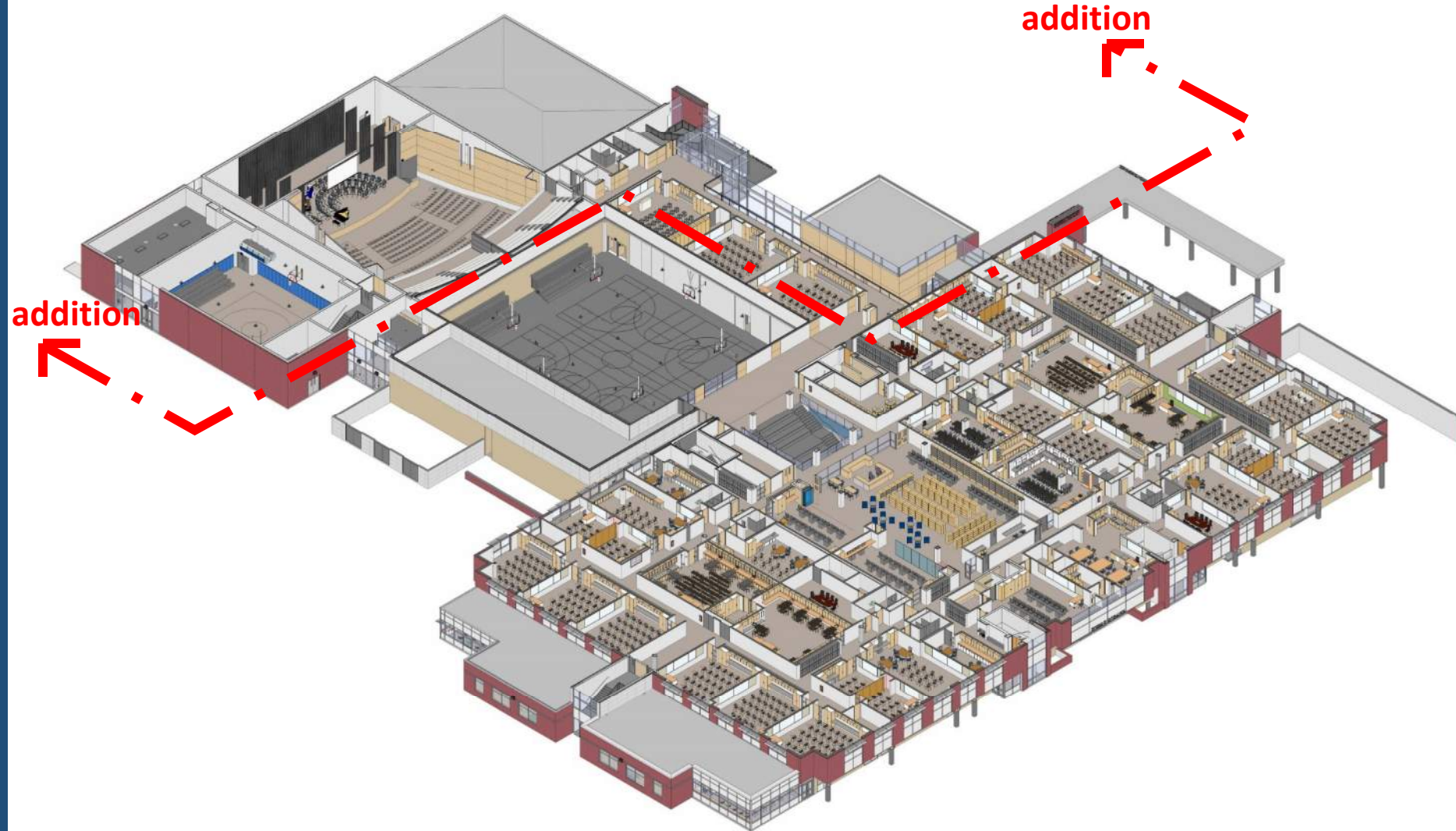


plan highlights

second floor

- Share core as hub of all circulation
- Learning stair connection through from dining to media resource areas
- 750 seat performance auditorium
- Community gymnasium
- Team structure classroom and science room clusters
- Clear flow-through from parent drop off to bus drop off

NORTHERN YORK COUNTY SCHOOL DISTRICT



after

before



FIRST SLIDE IMAGE APPRECIATION WORKSHEET

NORTH HAVEN COUNTY SCHOOL DISTRICT







NORTHERN YORK COUNTY SCHOOL DISTRICT





NORTHERN YORK COUNTY SCHOOL DISTRICT



BREAK-OUT SESSION #1



FIRST FLOOR

BREAK-OUT SESSION #1



BREAK-OUT SESSION #1



SECOND FLOOR

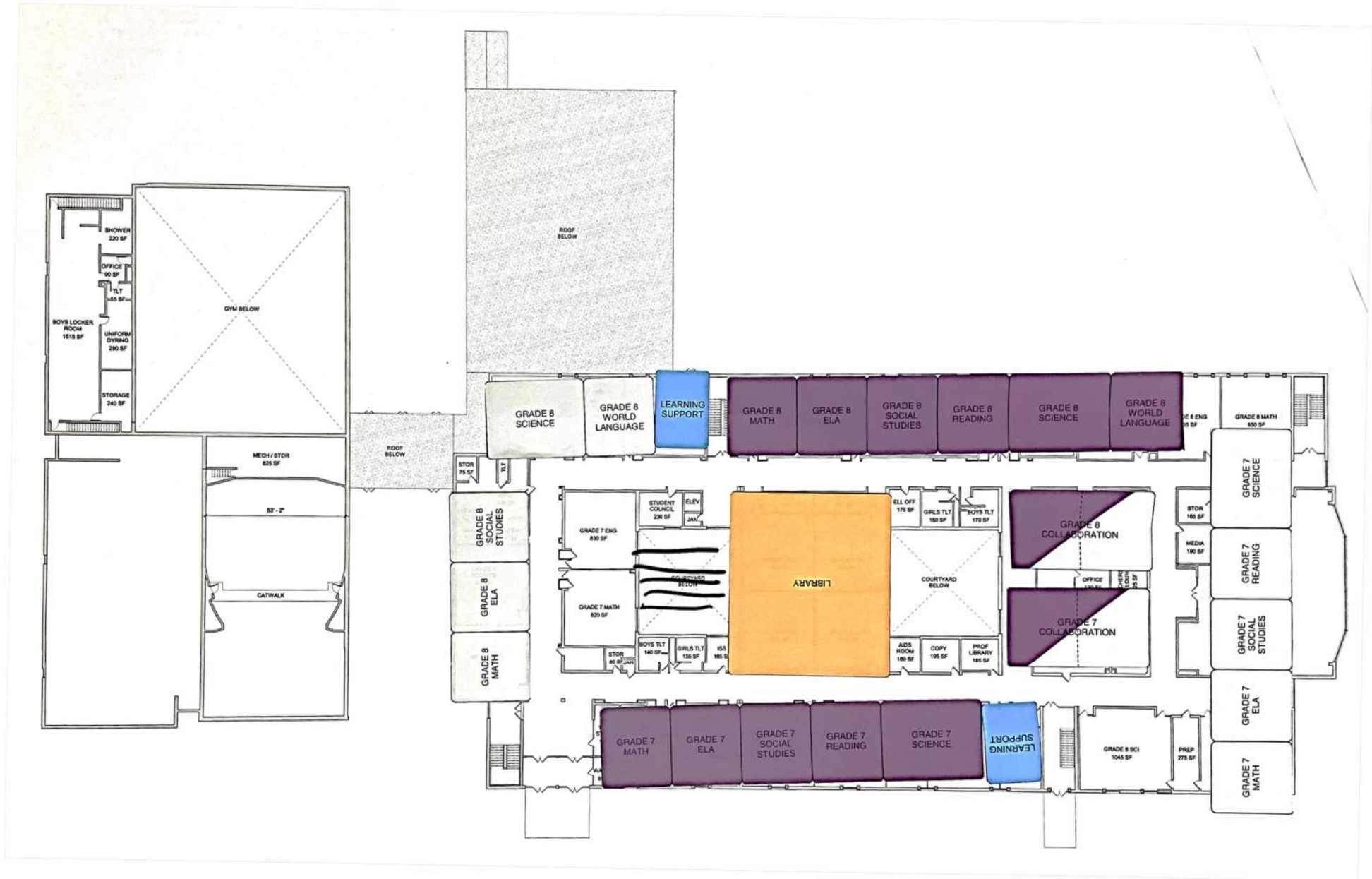
TEAM 1

- Reorient main entrance
- Relocate cafeteria
 - Separate from academic wing
 - Serve as a an event are adjacent to gyms
- Relocate Tech Ed with classrooms inside and shops with outside access



TEAM 1

- Courtyard becomes indoor space
- Learning studios together by grade level
- Media center above creative studies and art spaces
- Guidance suite becomes 7th and 8th collaboration area



TEAM 2

- Also reoriented main entrance
- Music rooms together
- Cafeteria moved to the exterior
- Shared collaboration areas
- Courtyards used for learning stairs
- Tech Ed adjacent to art and FCS
- Provide common areas with garage doors
- 6th grade teams on the lower level



TEAM 2

- Split 7th and 8th grade teams on upper level
- Learning spaces within grade structures



TEAM 3

- Also reoriented main entrance
- Learning support together (consider locating with the classrooms)
- Greenhouse in the courtyards
- Build out over the parking lot
- Move Cafeteria, kitchen and FACS (Health should be close to the specials)
- Tech Ed in same location
- Infill open area for choral and orchestra



TEAM 3

- 2-story library
- 2-story dining commons



BREAK-OUT SESSION #1 — BUILDING ADJACENCIES

10 Take-aways:

1. Flipped the main entrance to face the campus / connectivity to the high school
2. Cafeteria moved; make a volume out of the space
3. Media/STEAM spaces together
4. Gym/PE areas all consolidated
5. Public spaces (food, athletics and auditorium) — easy access that can be separated from the rest of the building
6. Dining Commons should be used all day and as a public evening event area

BREAK-OUT SESSION #1 — BUILDING ADJACENCIES

10 Take-aways (continued):

7. Admin, nurse and counseling together
8. Teams together, 6th grade separate on lower level
9. Connect the building vertically to tie the building together end to end/side to side
10. Limited natural light at the interior of the building

BREAK-OUT SESSION #2

NORTHERN YORK COUNTY SCHOOL DISTRICT

03 OTHER CONSIDERATIONS

CONSTRUCTION MANAGEMENT AND OTHER CONSIDERATIONS

OWNER'S REPRESENTATIVE SERVICES

03 OWNER'S REPRESENTATIVES

CONSTRUCTION MANAGEMENT (services outlined the AIA Owner-CM agreement)

- **Pre-construction Phase Services**
 - Cost estimating throughout the design process
 - Value engineering to ensure the project budget is maintained
 - Develop phasing plans for construction in occupied buildings
 - Construction contract scopes of work
- **Construction Phase Services**
 - Project Manager oversight and on-site representative
 - Schedule and budget management
 - Facilitate construction meetings and prepare minutes
 - Review/confirm change orders

03 OWNER'S REPRESENTATIVES

CLERK OF THE WORKS

- Pre-construction Phase Services
 - Generally limited scope
- Construction Phase Services
 - No Project Manager, no office staff, 40 hours general management
 - Typically don't facilitate meetings and prepare minutes
 - Limited resources to evaluate change orders

04 NEXT STEPS

TRANSPARENCY THROUGHOUT THE PROCESS

UPCOMING MONTH REVIEW

04 NEXT STEPS

SITE AND BUILDING DESIGNS – FEBRUARY 2023

- Campus master planning
- Finalize Northern Elementary School Schematic Design
- Northern Middle School:
 - Principal Student Advisory Committee meeting January 26th
 - Steering Committee #3 February 9th Option Review and Comment



NORTHERN YORK COUNTY SCHOOL DISTRICT

NORTHERN YORK COUNTY SCHOOL DISTRICT

THANK YOU!

SCHRADERGROUP