

the

# Polar Press

"You are the world and you are remarkable." Jason Mraz

## NORTHERN GRACE 2011

THE WORLD AS WE SEE IT, IS A REMARKABLE PLACE

Last year our students and staff embraced the 2010-2011 theme of GENEROSITY at Northern Elementary! We answered this question: "How can we use our time and our talents to make our local and global community a better place?" The spirit of Generosity continues



to flourish via our Northern students, staff and PTO. The 2010 theme underscores this year's focus on GRACE whereby students, staff and school events focus on the manner in which we present ourselves to our day, our tasks, our challenges. Our goal is to maintain a graceful outlook and approach each day! Jason Mraz's, "The World As I See It" provides an inspiring anthem for our Northern outlook on GRACE. We encourage and challenge you to explore and recommend opportunities on how we can continue to spread our sunshine and grow in grace!

### Save the Date:

#### PTO Meeting

**Jan 10- NES Library**

Join us for our first PTO meeting of 2012- lots to share!

7PM in the NES Library

#### Disco Skating Party

**Feb 12- FountainBlu**

Wear your warmest disco gear and join our PTO @ 4:30 PM for an evening of skating fun @ FountainBlu Rink!

#### Beauty & the Beast

**Mar 29 & 30- HS Aud.**

Check out the information listed at the end of this newsletter. Be sure to get your tickets for the best elementary musical around!

## GRACE PROJECTS

MRS. SINCLAIR and CLUB TUESDAY shared the spirit of generosity and grace with others by doing random acts of kindness and generosity... Students wrote letters to NYC firefighters and baked pies for special NES individuals... we are so grateful for these GRACEFUL Acts!

Local Charity, HANDS TO SOUL, partnered with NES students to provide hats, mittens, and scarves to families in need. Ben Teletnik, Anthony Vasco and Kelsey Van Horn (pictured) assisted in collecting items from classrooms each morning.

Check out MISS BACHMAN'S response to our GRACE focus at the following BLOGSITE:

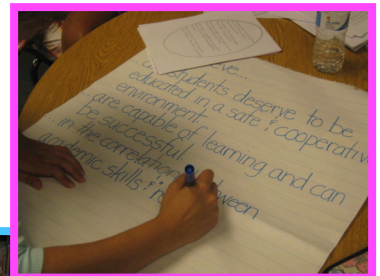
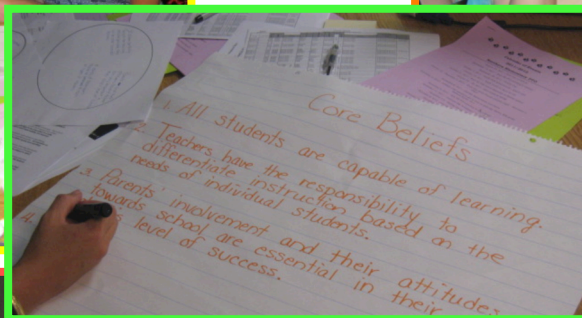
<http://27actsofgrace.blogspot.com/>

# WE BELIEVE...

## NES STAFF COLLABORATE ON SCHOOL VISION AND PHILOSOPHY...



### FACULTY MEETING 2011



NES staff  
BELIEVE in  
students  
first... with  
the core of  
increased  
Rigor,  
Relationships,  
Relevance  
(Daggett)... We  
VALUE the  
partnership  
of parents &  
community!

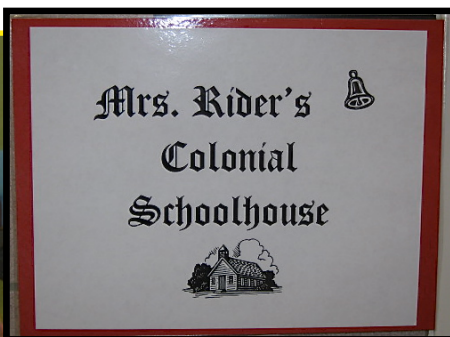


Please visit our NES website for ways to strengthen  
our home-school partnership!



# HERITAGE DAYS 2011

Each year Northern students participate in celebration of our American heritage by engaging in traditions of past and learning more about the fascinating methods of our forefathers. 2011 brought opportunities for the same and more! We wish to thank WES principal, Mr. Steve Lehman, for coordinating this wonderful day for our students!



## 2011 TOPICS

- (1<sup>st</sup>) Sheep to Shawl
- (2<sup>nd</sup>) Glass Blowing
- (3<sup>rd</sup>) Ben Franklin
- (4<sup>th</sup>) Abe Lincoln
- (5<sup>th</sup>) Dillsburg Tavern/Barn & Schoolhouse
- (K-5) Woodworking & Carpentry

# 2011 NES RACE FOR EDUCATION

Students, staff and school supporters gathered under sunshine and clear skies to participate in Race Day 2011.

Bostic Field provided ample opportunity for students to take advantage of walking, running, ... even a little dancing! Students enjoyed polar paw tattoos, healthy snack/drinks, and engaged in active movement and exercise. This PTO sponsored fundraiser has, for three years, garnered funds to benefit school/family events, technology development and student focused activities. The kind donations of families and friends (both near and far) are put to good use each year. This year, our PTO immediately supplemented our Olweus Bully Prevention Launch by purchasing Character Counts t-shirts for every student in the school. SmartBoards for student use, funding of afterschool clubs that promote interest and enrichment, and family fun evening events are just a few of the benefits gleaned from this fundraiser. We wish to thank our PTO family (particularly Mr. Muller- coordinator) for the hard work that goes into making this event such a success. Our Northern Families (and extended families) continue to provide fiscal support (every little bit counts) and our students continue to bring an enthusiasm that makes the preparation so worthwhile. The flexibility of our Northern staff makes last minute tweaks and adjustments successful... we are grateful for every single one.

This year's culminating assembly, hosted in the Middle School Auditorium, gave new meaning to "it's a jungle out here!" Our Northern staff (Mrs. Andrews, Mrs. Gayman, Mrs. Gilbert, Mrs. Klugh, Mrs. Clendaniel, Mrs. Beddia, Miss Cal, Miss Repetto, Mrs. Sinclair, Ms. Cornett, Mr. Eyster) performed to the Tokens, "The Lion Sleeps Tonight" with Mr. Eyster as our fearless, sleeping lion. Miss Cal sang Louis Armstrong's "What a Wonderful World," using it as the summary song for the Northern GRACE 2011 launch. Mr. Muller and Mrs. Chance co-hosted a celebration of all participants and highlighted individual (random) awards!

As previously noted, this year Jason Mraz's song, "The World As I See It" serves as our Northern Elementary GRACE anthem- a call to acknowledge the graceful manner in which we approach each day... working in harmony with our world family.

We encourage you to take a moment to view our assembly videos and a clip of Mr. Mraz... all located on our Northern Elementary website!



# GRACE 2011-2012

## OBPP AND CHARACTER COUNTS

GRACE 2011 AFFIRMS OUR COMMITMENT TO STUDENTS, STAFF AND COMMUNITY: BOTH LOCALLY AND GLOBALLY. OUR DESIRE LIES IN BEING MINDFUL OF THE MANNER IN WHICH WE APPROACH OUR DAILY TASKS... WITH GRACEFUL INTENTION. HOW DOES THIS MINDSET FACTOR INTO OUR PRIMARY CHARGE- ENSURING STUDENT ACHIEVEMENT AND GROWTH? OUR 2011 SUMMER FACULTY MEETING (PICTURED ABOVE) FOCUSED ON OUR COLLECTIVE BELIEFS AS THE FOUNDATION OF OUR NORTHERN PHILOSOPHY. OUR BELIEFS DEEMED ESSENTIAL FOR ACADEMIC GROWTH:

- WE BELIEVE THAT POSITIVE RELATIONSHIPS ARE ESSENTIAL TO THE SUCCESS AND GROWTH OF OUR STUDENTS.
- WE BELIEVE THAT A SAFE AND SECURE ENVIRONMENT ENHANCES THE OPPORTUNITY FOR STUDENTS TO THRIVE AND ENGAGE IN HEALTHY PRODUCTIVE RISKS.
- WE BELIEVE THAT RELEVANCE OF TOPIC AND ASSIGNMENT (MAKING IT MEANINGFUL AND PERTINENT TO STUDENTS/STANDARDS) PROVIDES FOR GREATER STUDENT INVESTMENT AND AUTHENTIC APPLICATION.
- WE BELIEVE THAT TRANSPARENCY OF EXPECTATIONS, CONSISTENCY AND TIMELY FEEDBACK, INCREASES SUCCESS FOR ALL STAKEHOLDERS.



GRACE 2011 PROVIDES A STRONG SCAFFOLD FOR THE LAUNCHING OF THE OLWEUS BULLY PREVENTION PROGRAM, FOR IT RESTS ON POSITIVE SCHOOL WIDE ENGAGEMENT, AN ESSENTIAL PAIRING FOR BULLY PREVENTION SUCCESS. PLEASE TAKE A MOMENT TO READ THE OVERVIEW OF THE OBPP (OLWEUS BULLY PREVENTION PROGRAM) LOCATED ON OUR NORTHERN ELEMENTARY WEBSITE.

WE ARE UNDERSCORING THIS PROGRAM BY FURTHER CULTIVATING OUR SCHOOL FAMILY FOCUS ON CHARACTER DEVELOPMENT. WITH GRACEFUL INTENT, ALL STAFF ARE PARTICIPATING IN WRITING POSTCARDS TO STUDENTS (POLAR PRIDE POSTS), MIRRORING EXPECTATIONS AND ACKNOWLEDGING GRACEFUL DEEDS (GRACE BADGES). OUR CHARACTER COUNTS FOCUS (MONTHLY PILLAR WORDS) CONTINUES TO GUIDE OUR FAMILY MEETINGS AND SCHOOL WIDE ACTIVITIES. WEEKLY (CYCLE) CLASS FAMILY MEETINGS PROVIDE A FORUM FOR STUDENT DISCUSSION, FEEDBACK, PRACTICE, AND GROWTH.

YOUR CONTINUED PARTNERSHIP IS VITAL IN THIS PROCESS. WE APPRECIATE YOUR COMMITMENT TO OUR STUDENTS AND STAFF AS OUR NORTHERN FAMILY CONTINUES TO GROW IN GRACE.

# OLWEUS BULLY PREVENTION



As noted above, Northern Elementary launched the Olweus Bully Prevention Program in October. The months of August and September permitted our core committee to focus on school wide expectations whereby staff and students engaged

in explicit modeling, practicing, participating in feedback and working towards consistency amongst all. Students focused on safe and respectful travel in the hallways, orderly entry to and dismissal from building, cafeteria routines that assist in orderly yet enjoyable lunch period, family meetings that provide for discussion of hot-topics and building community, etc. These practices continue as we work towards ensuring a safe environment conducive to fostering positive relationships and academic success. Our OBPP Launch Assembly was crafted and presented by our school Core Committee. The focus remained centered on FAMILY for we believe that the stronger our Northern Family is, the less potential there will be for bullying. With this, family meetings leading to the launch focused on school wide expectations, family meeting routines, and pertinent vocabulary. Students dressed in t-shirts provided by the PTO wherein each grade level donned a specific color representing a character counts pillar word. Students and staff sang and signed (sign language) the words to, "We Are Family," before launching into a school wide family meeting. The meeting focused on the definition of bullying, anti-bullying rules and essential vocabulary. Establishing relevant connection to the GRACE theme and Character Counts was additionally essential. Our 2011 school anthem, "The World As I See It" highlighted student examples, all of which can be viewed on Northern Elementary website. Please reference the OBPP information posted as it provides further details on next steps for our students and staff.





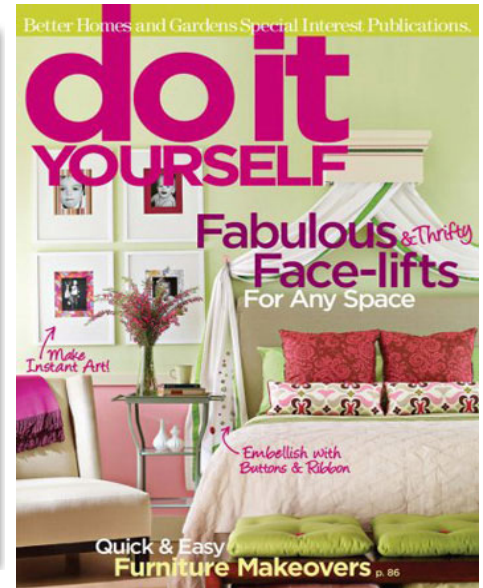
# Faculty Meeting Focus:

## WRITING- AUDIENCE MATTERS

Pick up a magazine and discuss the cover with your student:  
Who is the intended reader?  
What type of writing might the reader encounter? ... Narrative, Persuasive, Informational?  
For each of the above... How do you know?

AUDIENCE MATTERS... a writer must consider audience- what do they want or expect? Do they wish to be entertained? Convinced of a different or similar point of view? Informed or educated?

With this in mind, a writer is able to effectively prepare to convey their intended message. This activity can provide adult and student opportunity for meaningful discussion about the various types of writing and pertinent elements. Give it a try with the magazines pictured above!



## WRITING- FOCUS AND CONTENT

Need a strategy to assist in drafting a focused expository paragraph? Try a version of Judith Gould's SEE Strategy (Statement, Elaborating Detail, Extending Detail)

Here's how it works:

Consider the most important **key word** in the statement. The elaborating sentence should hinge on this key word and provide an elaborating detail. Use the most important word in the elaborating detail to hook to the extending sentence.

At first, students may repeat the key words to assist them in focusing each added sentence. Follow up sessions can focus on revising key words into synonyms or similar phrases. Use this strategy to scaffold students in building focused, developed paragraphs. I Love Guinea Pigs serves as a good example of this strategy in action...

Picture Books serve as great mentor texts for writing strategies: take a peak inside this interesting and informative children's text...

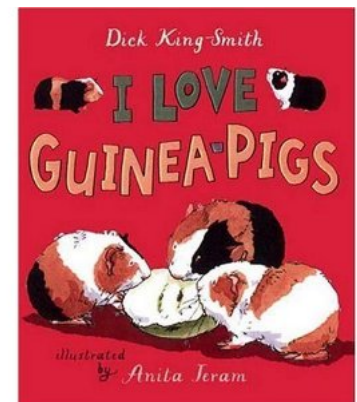
STATEMENT:  
Guinea pigs **are not pigs**.

ELABORATING DETAIL:  
They **are rodents**, like mice and rats and squirrels.

EXTENDING DETAIL:  
**Rodents** have special front **teeth** that are great for gnawing things.

EXTENDING DETAIL, DETAIL:  
These **teeth** go on growing throughout the animal's life and are self-sharpening.

Find time to explore and analyze informational text... look for other examples of how authors use this strategy to stay focused and develop their content... there are great examples everywhere!





## OCTOBER FUN @ NES!



Author, **Sneed Collard III**, spent the day talking with students about the fascinating world of writing! Where do writers get ideas? EVERYWHERE!! Grade 3 eagerly took notes in their writer's notebooks!

**Halloween** also brought out the creative spirit @ NES- Pumpkin Characters in Miss Repetto's classroom and unique costuming by students! Be sure to check out our school video on the NES website!





# HALLOWEEN 2011





# NES Spotlight!

## WEDDING BELLS ARE RINGING!

**Miss McCroskey** (extended kindergarten instructional aide) officially became Mrs. Bortner in a Fall 2011 Wedding. To prepare for a smooth transition, our kindergarteners started the year referring to her as Mrs. B!

AND... **Miss Bachman** (art teacher) is tying the knot!

A New Year's Eve service and reception brings together family and friends in the celebration of Mr. and Mrs. James Connell.

We wish both couples a wonderful journey of wedded bliss!



**MRS. NICHOLL'S KINDERGARTEN** class celebrated Thanksgiving with a classroom prepared feast! Students focused on sharing, giving thanks and celebrating the traditions of our country!



### EMERGENCY SCHOOL CLOSINGS

It is that time of year that we need to begin thinking about inclement weather. Below is a list of local radio and television stations that announce our districts delays, cancellations or early dismissals.

WHP-TV (CBS 21), WHTM-TV (ABC 27), WGAL-TV (NBC 8), WPMT-TV (FOX 43), WSBA (AM 910), WARM (FM 103.3), WHP (AM 580), WGTY (FM 107.7), WGET (AM 1320), WRKZ (FM 102.3), WNNK (FM 104.1), 98 YCR (FM 98) AND WHVR (AM 1280)

Our district will also be sending out messages via Connect Ed.

### SCHOOL CLOSINGS

January 16  
February 20 (Snow MU #1)  
March 16  
March 19 (Snow MU #2)  
April 5 (Snow MU #3)  
April 6  
April 9 (Snow MU #4)  
May 28

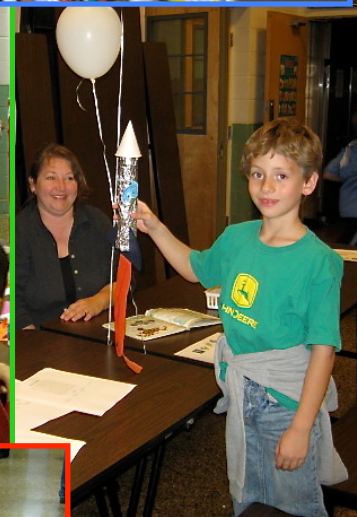
**EARLY DISMISSALS:** Jan 18, 19; May 4, June 5



# PTO SPONSORED EVENTS...

## NES Literacy Night was OUT OF THIS WORLD!

Our Scholastic Book Fair theme guided preparations for our Fall Literacy Night! Sponsored and organized by the PTO in collaboration with NES Staff, Literacy Night provided the opportunity for students, staff, and community to engage in activities that foster and nurture our love for reading and writing: **READING IS OUT OF THIS WORLD!** The evening was dotted with staff readers, literacy make and take stations, an out of this world photo opportunity, and extra visits to our Scholastic Book Fair. We wish to thank our PTO and NES staff for making this evening such a wonderful experience for our students! Please take careful note of the Space Ship backdrop crafted by Mrs. MacKay and the incredible smiles of this evening's participants! **WE LOVE LITERACY!**





## BEAUTY AND THE BEAST JR.

Once upon a time in a faraway land, an Enchantress (Kari Henry) turns a cruel, unfeeling Prince (Nate Cherok) into a hideous Beast. To break the spell, the Beast must learn to love another and earn her love in return before the last petal falls from the enchanted rose.

Ten years later, in a small village far below the Beast's castle, a beautiful and intelligent young woman, Belle (Alexis Hunter), yearns for something more than her provincial life. On his way to show his invention at a fair, Belle's father, Maurice (Parker Miller), gets lost and seeks shelter in a castle. Enchanted servants- Cogsworth (Marlee Starliper), Lumiere (Daniel Curry), Babette (Jordan Allen), Mrs. Potts (Katelyn Goodling), and Chip (Jordan Bissell)— try to make Maurice comfortable but the Beast imprisons the intruder. To the dismay of the Silly Girls (Jessica Rahn, Grace Kennedy, & Courtney Middaugh) who fawn over Gaston (Jackson Siegel), the village brute proposes to Belle who turns him down. When Belle sees Gaston's sidekick, Lefou (Ryan Allen), wearing her father's scarf, Belle runs off to search for him..... and the excitement continues!

Mark your calendars now for this year's elementary musical, Disney's *Beauty and the Beast Jr.* Performances will be held Thursday, March 29<sup>th</sup> at 4:15PM and Friday evening, March 30<sup>th</sup> at 7:00PM in the Northern High School Auditorium.

Additional cast members include: Evan Beddia, Danielle Brightbill, Josh Brown, Kristen Cassar, Molly Chapman, Abigail Clendaniel, Alicen Erwin, Rachel Ford, Brianna Hertz, Nich Huth, Michael Kurten, Kate Luft, Morgan McCarthy, Mia Miller, Mya Mooney, Gabrielle Morris, Rachel Muir, Cody Patterson, Madyson Repman, Allison Renyer, Emma Rosensteel, Anita Smith, Samantha Taylor, Elise Walker, Viola Wardrope, Ben Weber, Keenon Weber, and Nick Weber.



# Polar Press Fridge Friend

	MON	TUE	WED	THUR	FRI
JANU	2 NO SCH	3 D6	4 D1	5 D2	6 D3
JA	9 D4	10 D5	11 D6	12 D1	13 D2
	16 NO SCH	17 D3	18 ED D4	19 ED D5	20 D6
	23 D1	24 D2	25 D3	26 D4	27 D5
	30/ D6	31/ D1			

**PTO Meeting-  
January 10<sup>th</sup>  
@ 7PM in  
NES Library!**



## IMPORTANT DATES

Week of 1/03: Rdg Benchmark  
 Week of 1/09: Math Benchmark  
 1/10: PTO Meeting @ 7- LIB  
 1/16: No School  
 1/18 & 19: Early Dismissal  
 2/07: PTO Candy Sale Starts  
 2/12: PTO Skating Party  
 2/20: No School- Makeup #1  
 2/27: Spring Pictures  
 3/02: Read Across America  
 3/11-3/23: PSSAs in 3<sup>rd</sup>, 4<sup>th</sup>, 5<sup>th</sup>  
 3/16: No School  
 3/19: No School- Makeup #2  
 3/29: 4:15PM Musical  
 3/30: 7PM Musical @ HS  
 3/30: Manners Luncheon  
 3/30: 2<sup>nd</sup> Gr. Fieldtrip  
 4/04: 4<sup>th</sup> Gr. Fieldtrip  
 4/05: No School- Makeup #3  
 4/06: No School  
 4/09: No School- Makeup #4  
 4/11: Track Sp. Ed Olympics  
 4/16-4/20: Gr. 5 Writing PSSA  
 4/19: Track Sp. Ed Olympics  
 4/20: Donuts with Dad 8AM  
 4/23-4/27: Gr. 4 Science PSSA  
 4/25: Spring Open House  
 4/27: PTO Bingo @ 6PM  
 5/02: Gr. 4 Philadelphia FT  
 5/04: Early Dismissal  
 5/08: PTO Meeting  
 5/08: Ele. Band Concert 7PM  
 5/11: Moments w/ Mom 8AM  
 5/13: Book Fair Week  
 5/16: 3:45-5PM Book Fair  
 5/22: Ele. Choral Concert-7  
 5/25: Field Day  
 5/28: No School  
 6/04: Gr 5 Farewell  
 6/05: Noon Dismissal

	MON	TUE	WED	THUR	FRI
FEBRUARY	FEB 7 <sup>TH</sup> WOLFGANG CANDY LAUNCH		1 D2	2 D3	3 D4
	6 D5	7 D6	8 D1	9 D2	10 D3
	13 D4	14 D5	15 D6	16 D1	17 D2
	20 NO SCH	21 D3	22 D4	23 D5	24 D6
	27/ D1	28/ D2	29/ D3	FEB 27 <sup>TH</sup> SPRING PICS	

	MON	TUE	WED	THUR	FRI
MARCH	READING/MATH PSSAS: 3/12 THRU 3/23			1/ D4	2/ D5
	5/ D6	6/ D1	7/ D2	8/ D3	9/ D4
	12/ D5	13/ D6	14/ D1	15/ D2	16/ NO SCH