

Working Together...Serving Families...Improving Lives



OTTER TAIL
FAMILY SERVICES
COLLABORATIVE



OTC Family Services Collaborative

- Authority.
- About the Collaborative.
- Greatest “wins”.
- Challenges.



Minnesota Collaboratives: Authorized Under Statute

General History of MN Collaboratives

Born in 1993 from legislation which provided \$30,000 for a planning process involving all sectors of the community to:

- Develop a community vision for children and families.
- Develop goals to address health, developmental and educational, and family-related culturally specific needs of children and youth.
- Develop a decision-making process and governance structure.
- Coordinate services to avoid duplication and overlapping assessments.
- Design an integrated service delivery system that coordinates funding streams and delivery of services among existing agencies.
- Establish an integrated fund to help provide integrated delivery systems and to add additional services.
- Maximize federal and private funds



About the Otter Tail Family Services Collaborative

**Co-labor since 1995
toward a solution for
an identified
community need in a
way one agency on its
own could not
accomplish**



Mission, Vision, Values, & Goals

Mission & Vision:

Working Together...Serving Families...Improving Lives

Within the Otter Tail Family Services Collaborative families, communities and service providing agencies work together for a responsive, flexible system of education, support and services that focus positively on the needs, strengths, and potential of each child and family.

Core Values:

As service providers who collaborate, we value:

- **Improved outcomes for children and families**
- **Leadership and innovation**
- **Public-private partnerships**
- **Responsive service delivery system**

Goals:

- **Increasing Academic Engagement**
- **Improving Emotional Well-being**
- **Improving Preventive Health Practices**
- **Reducing Risk Behavior**

Collaborative Partners



Governance Structure

Governing Board

Representatives: 1 from each partner board.
Meets annually.
Sets policy & budget
Reimbursement via Local Collaborative Time Study is funding mechanism.

Contracted support:

- 1) Coordinator provides day-to-day coordination, leadership, & support.
- 2) Time study coordinator trains staff & reports time study requests for payment.
- 3) Administrative assistant support from LCSC.

Leadership Council:

Representatives: 2 county board, 2 non-governmental partners, & top executive from each partner agency. Meets quarterly.
Oversees policy, program implementation, & make budget allocations.

Planning & Evaluation:

Representatives from partnering agencies
Meets quarterly, prior to Leadership Council.
Website & data collection.

Early Childhood:

Representatives from agencies that serve early childhood
Meet monthly.
Serves as OTC Early Childhood Initiative through West Central Initiative, advisory group for OTCPH Healthy Families America & Nurse Family Partnership Programs. Provides support / advises Family Advocate program & Caring Connections new provider visiting program.

Community Equity & Support:

Representatives from partner agencies
Meet every other month
Plans, supports, advises the Collaborative on overall well-being of OTC to becoming community that values the potential of its people & provides access to health, jobs, activities, education, & economic empowerment via understanding economic disparities, bias, equity, & how the Collaborative might support children & families in need.

School Engagement:

Representatives from schools and the County Attorneys office, plus other agencies
Meet every other month
Provides support & advising for attendance tracking & district's REACH program, county-wide attendance policies, procedures, & referral for truancy, considering full realm of issues impacting youth's engagement with school.

Children's Mental Health Local Advisory Council:

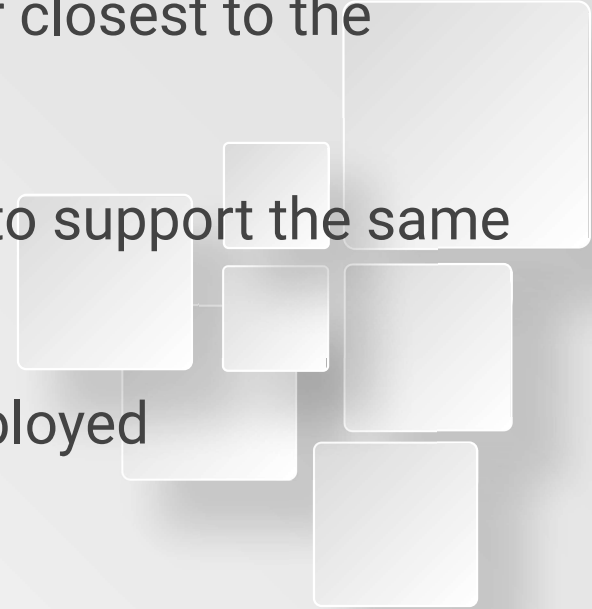
Representatives from mental health agencies and schools
Meets at least quarterly.
Provides support & advisement on School-based Mental Health programs funded, in part, by the Collaborative.
Considers & supports opportunities for further learning about children's mental health..

Frequency

What we do: For nearly 30 years, OTC leaders have created collaborative, trust-based relationships through frequent meetings to address issues, across systems, in a manner closest to the community, using shared resources.

Why we do it: each agency touches and works to support the same human beings - Otter Tail county citizens

As a result: innovative strategies have been deployed




Funding

Minnesota Statutes, § 245.4932, § 245.495, § 256F.13...Minnesota Department of Human Services Financial Operations Division Centers for Medicare and Medicaid Services Administration (CMS) employs the Local Collaborative Time Study to sample *activities & services performed across MN for eligible Medicaid (MA) and /or Title IV-E reimbursement. (*public school districts, public health, and correctional agencies)

Otter Tail County Human Services Department is the Collaborative's LCTS Fiscal Reporting & Payment Agent. Funds are held in an integrated fund

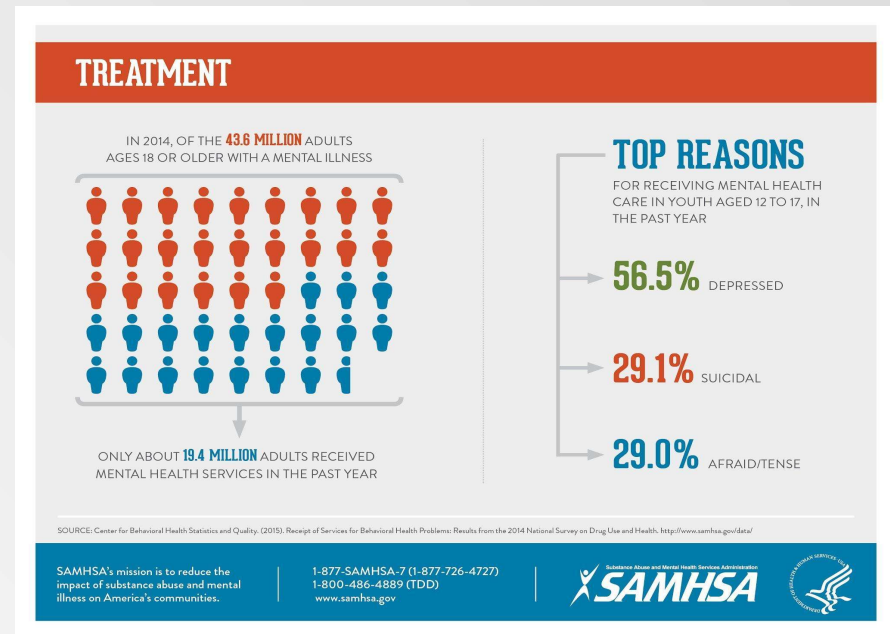




Collaborative Big Wins!

School Based Mental Health

The Collaborative pioneered in school based mental health services in MN schools



Universal Home Visitors Program

Designed to support parents with children birth through age five

Includes a curriculum, if parents wish

Works to connect children & families with school



Truancy Prevention / School Engagement

The Truancy Work Group developed a two-pronged county-wide approach to reducing truancy over time, as funding allowed: 1) promoting academic engagement, and 2) responding to school attendance problems.



The background of the slide is a light gray gradient. It is decorated with numerous overlapping squares of various sizes and shades of gray, some with subtle drop shadows, creating a layered, geometric effect.

Collaborative Concerns!



**OTC Family Services Collaborative data informs
actions for working together, serving families,
improving lives**

The background of the slide is a light gray gradient. It is decorated with numerous squares of various sizes and shades of gray, some of which have a slight 3D effect with shadows. These squares are scattered across the slide, with a higher concentration on the left and right sides, framing the central text.

Thank YOU!