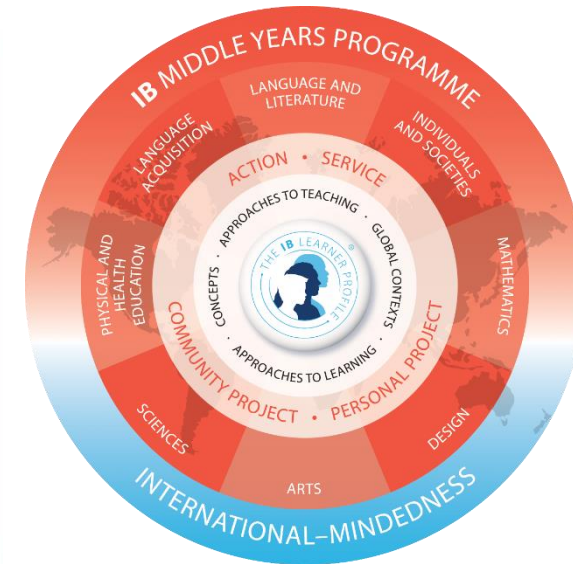


WESTLAKE HIGH INTERNATIONAL BACCALAUREATE PROGRAM

Middle Years Programme
January 9, 2020

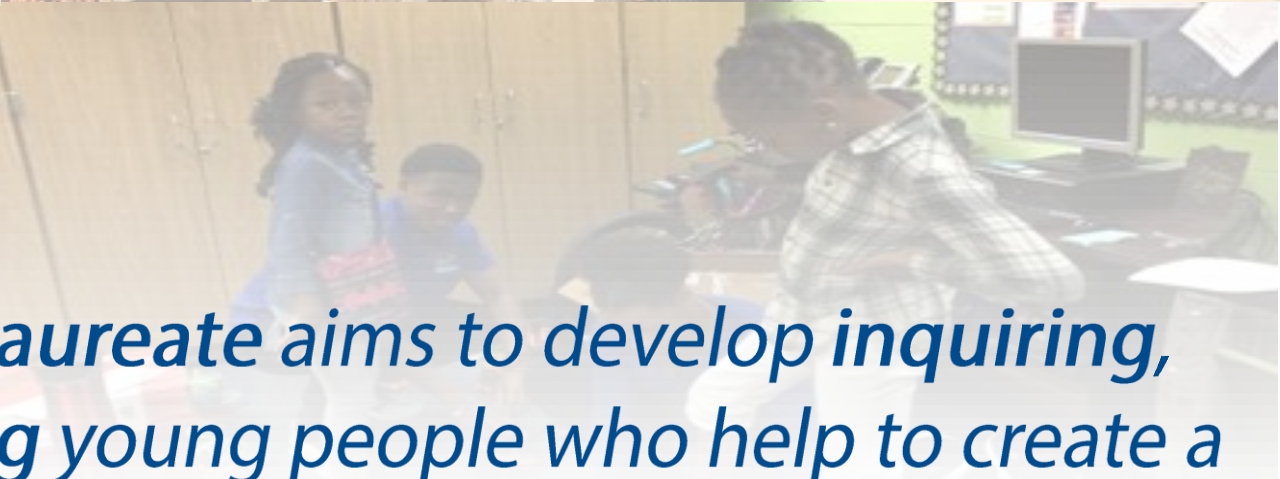




So what exactly is the International Baccalaureate?

“...The International Baccalaureate (IB) is a non-profit foundation, motivated by its mission to create a better world through education”





...The International Baccalaureate aims to develop inquiring, knowledgeable and caring young people who help to create a better and more peaceful world through intercultural understanding and respect...



...Our programmes encourage students across the world to become active, compassionate and lifelong learners who understand that other people, with their differences, can also be right....



International Baccalaureate®
Baccalauréat International
Bachillerato Internacional

Are you an **IB Learner?**

INQUIRER

OPEN-MINDED

KNOWLEDGEABLE

CARING

BALANCED

THINKING

COMMUNICATOR

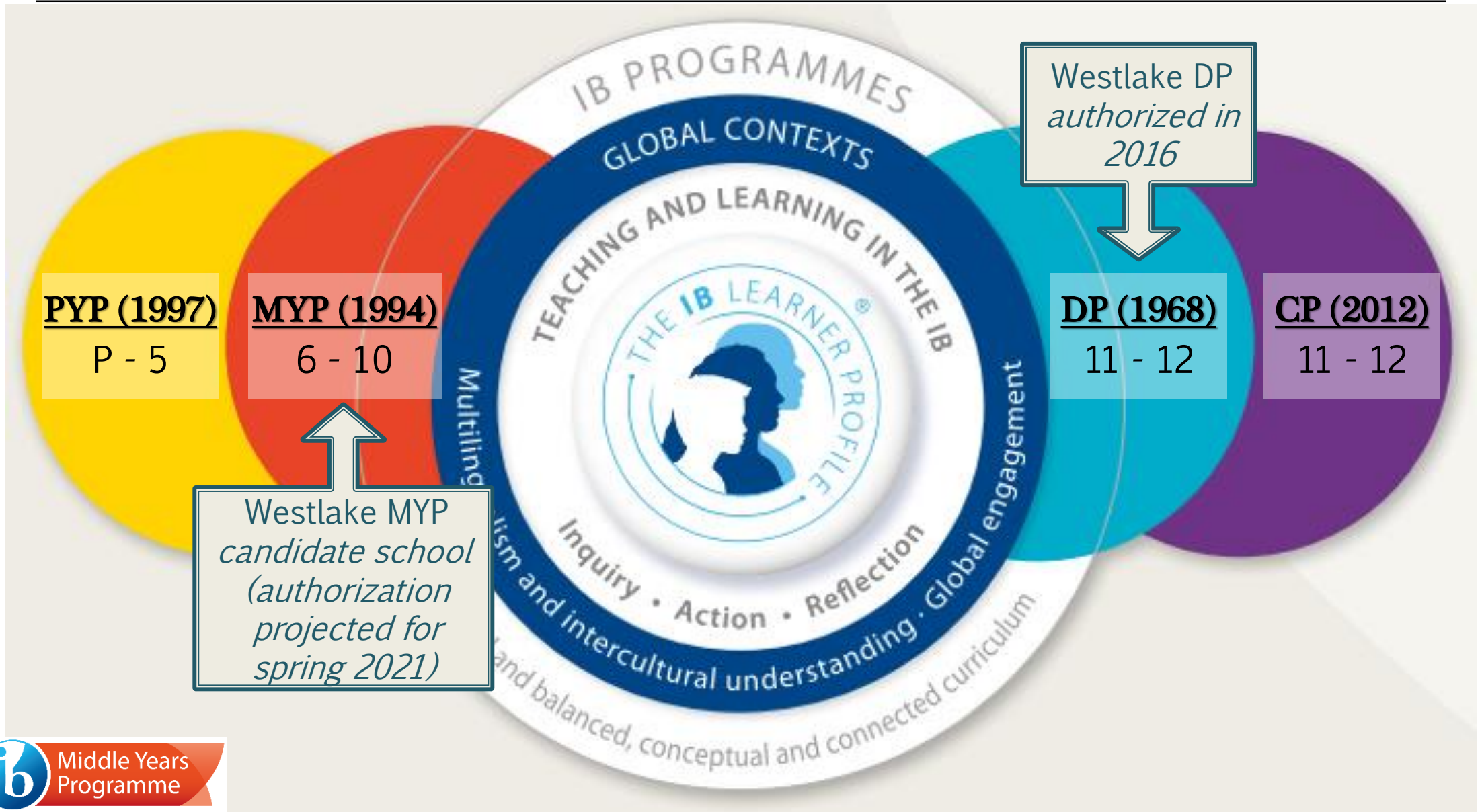
REFLECTIVE

PRINCIPLED

RISK-TAKER



The IB Continuum



What is IB MYP?

- International Baccalaureate Middle Years Programme (IB MYP)
- Ages 11-16 and/or grades 6-10
- **ALL** 9th and 10th grade students at Westlake will be IB MYP students.
- The IB MYP emphasizes the principles of the IB programme: creative problem solving, hands-on learning, student-led inquiry, international mindedness, and service learning.

WHY IB



Critical thinking



Balanced programme



Recognised worldwide

OPPORTUNITIES



Balanced and well-rounded program



Interpersonal and critical thinking skills



Holistic education

IB MYP Structure

- Requires at least 50 hours of teaching time for each subject group offered:

- Language and literature
- Language acquisition
- Individuals and society
- Sciences

- Mathematics
 - Arts
- Physical and health education
 - Design

- 6 of the 8 subject groups must have a minimum of 50 hours of teaching time each year
- Commitment to on-going teacher and staff professional development



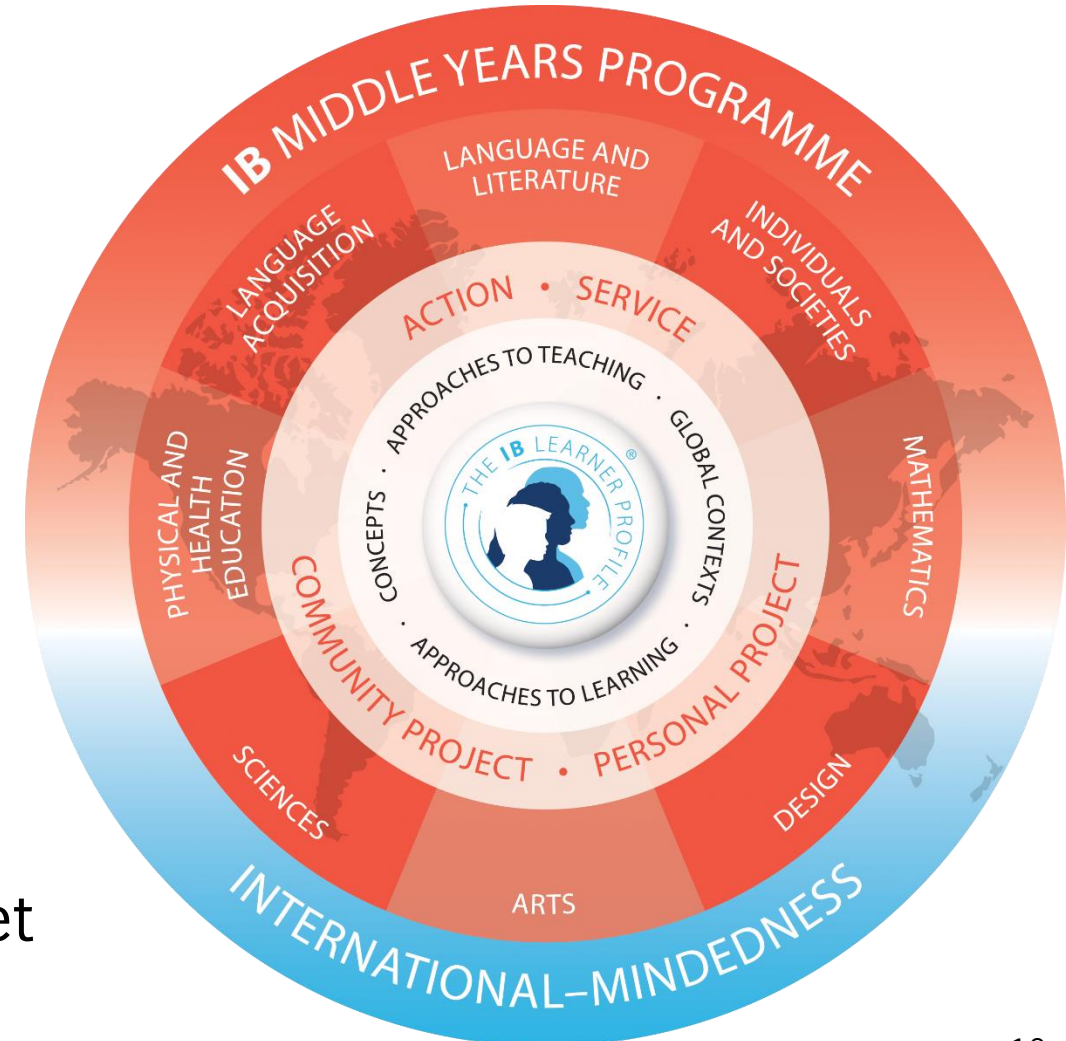
Why MYP?



Learn how to learn
Intercultural understanding
Conceptual understanding
Concepts - big ideas
Learning in context
Community service
Creative, critical
and reflective thinkers

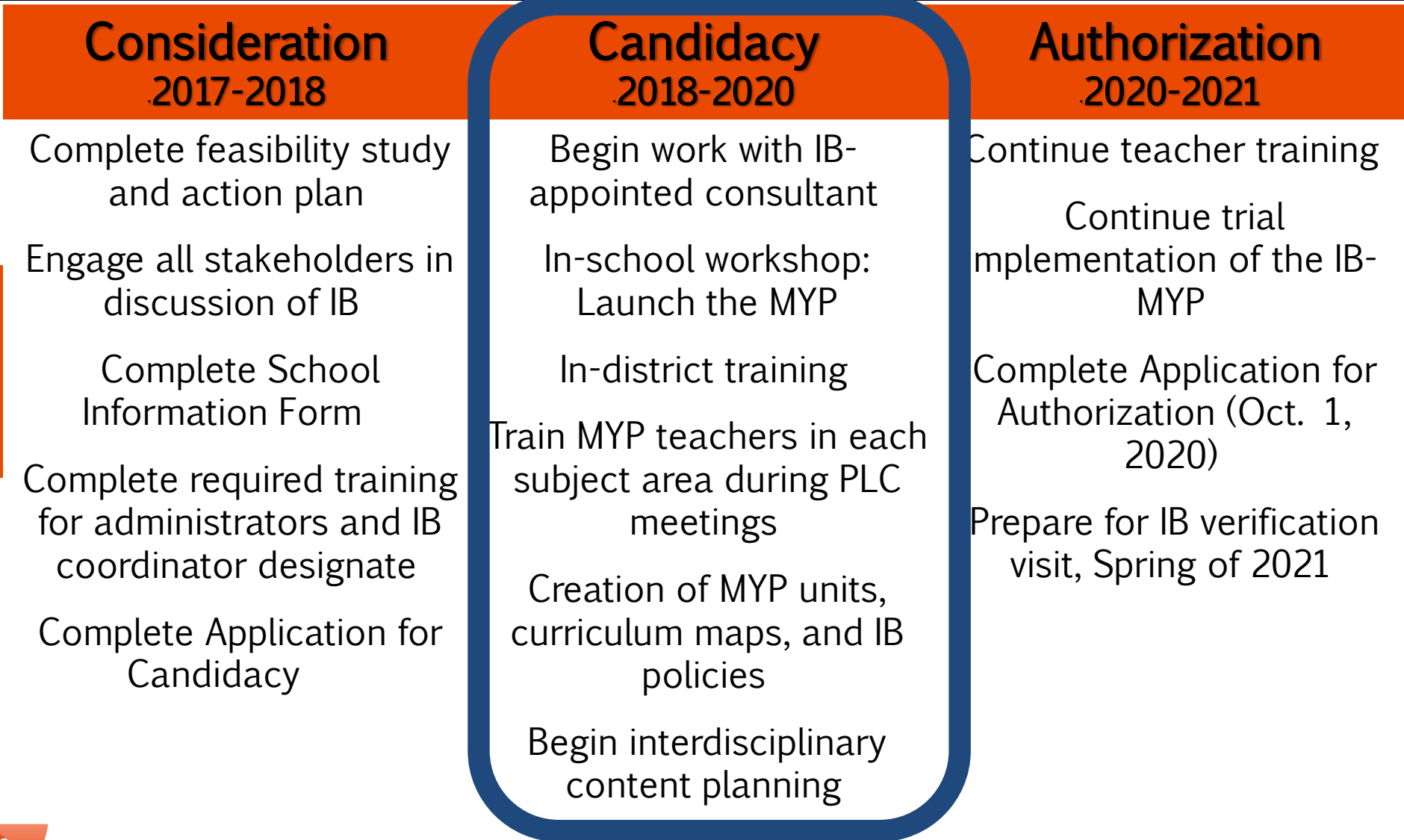
The MYP Framework

- The IB MYP helps students develop subject-specific and interdisciplinary understanding.
- The MYP framework includes:
 - **IB Learner Profile**, the core of all IB Programmes
 - **Approaches to Learning (ATL)**, helps students learn how to learn
 - **Key and related concepts**, helps students explore relevant big ideas
 - **Global contexts**, helps students understand the relevance and importance their common humanity and shared guardianship of the planet



Where are we in this process?

The Journey to IB MYP Authorization



Want More Info?

The screenshot shows the Westlake High School website with a blue navigation bar containing links for HOME, OUR SCHOOL, STUDENTS & FAMILIES, STAFF, ACADEMICS, ACTIVITIES, and CALENDAR. Below the navigation is a search bar labeled 'FCS Home' and a lion logo with the text 'Westlake High School A Legacy of Excellence'. A row of service icons includes Online School Payments, Volunteer / Chaperone, and Transportation. A central section titled 'Meet the Coordinator' lists 'Ms. Jenelle Wingfield'. Below this are 'IBO Resources' and 'Westlake IB Resources' sections, each with a list of links. At the bottom left, there is a section for 'The IB Mission' and a 'Middle Years Programme' logo.

HOME OUR SCHOOL STUDENTS & FAMILIES STAFF ACADEMICS ACTIVITIES CALENDAR

Westlake High School
A Legacy of Excellence

Online School Payments Volunteer / Chaperone Transportation

Meet the Coordinator

- [Ms. Jenelle Wingfield](#)

IBO Resources

- [International Baccalaureate Organization Website](#)
- [What is DP \(Diploma Program\)?](#)
- [What is MYP \(Middle Years Program\)?](#)

Westlake IB Resources

- [WHS IB Diploma Program](#)
- [WHS IB Middle Years Program](#)
- [WHS ManageBac](#)
- [WHS IB Testing Calendar](#)

The IB Mission

The International Baccalaureate (IB) is more than just an accelerated academic program motivated by a mission to create a better world through education.

Mission

Middle Years Programme



Westlake Website

ibo.org/parents



Jenelle Wingfield,
MYP & DP Coordinator
wingfieldj@fultonschools.org