



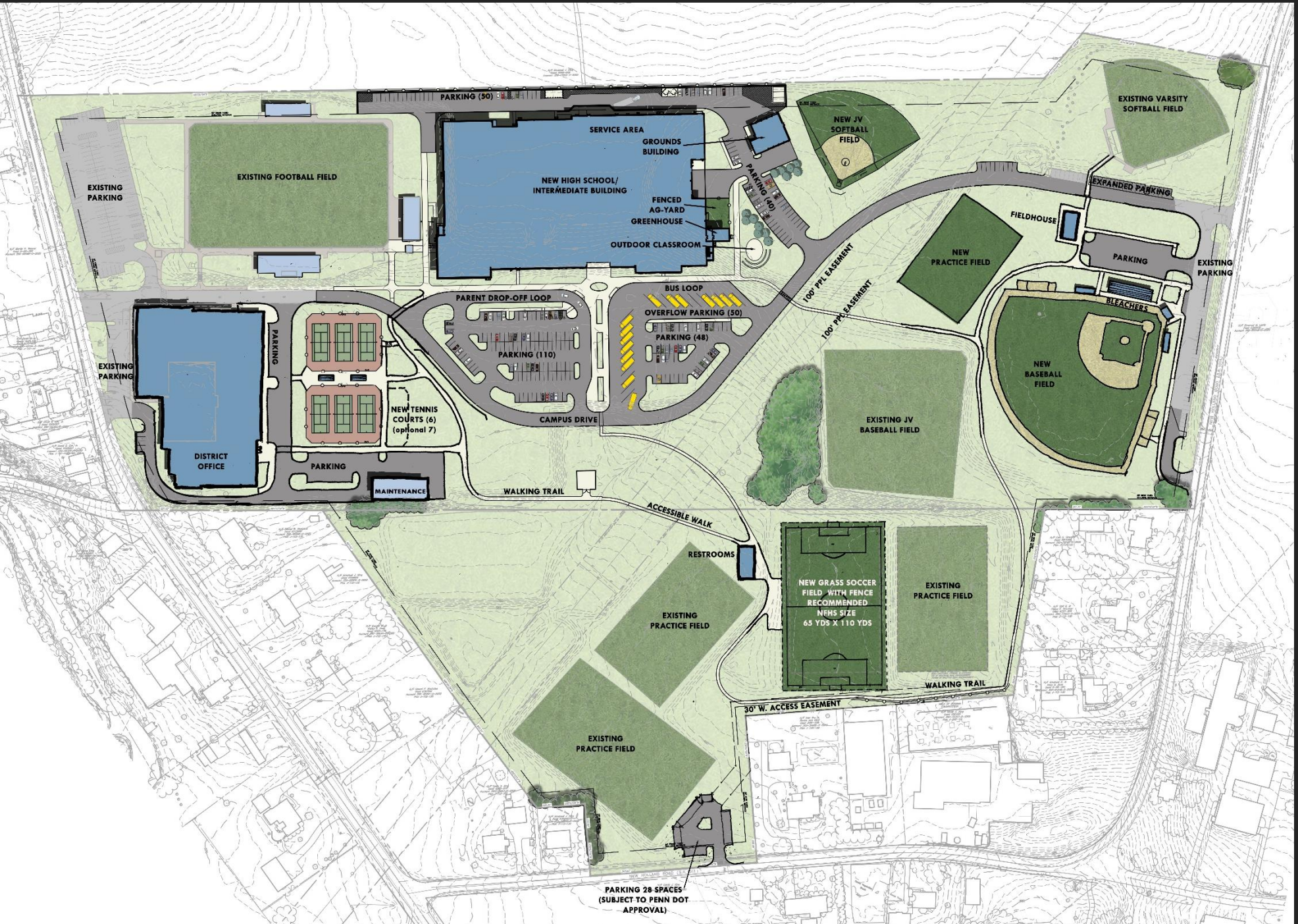
Crabtree, Rohrbaugh & Associates

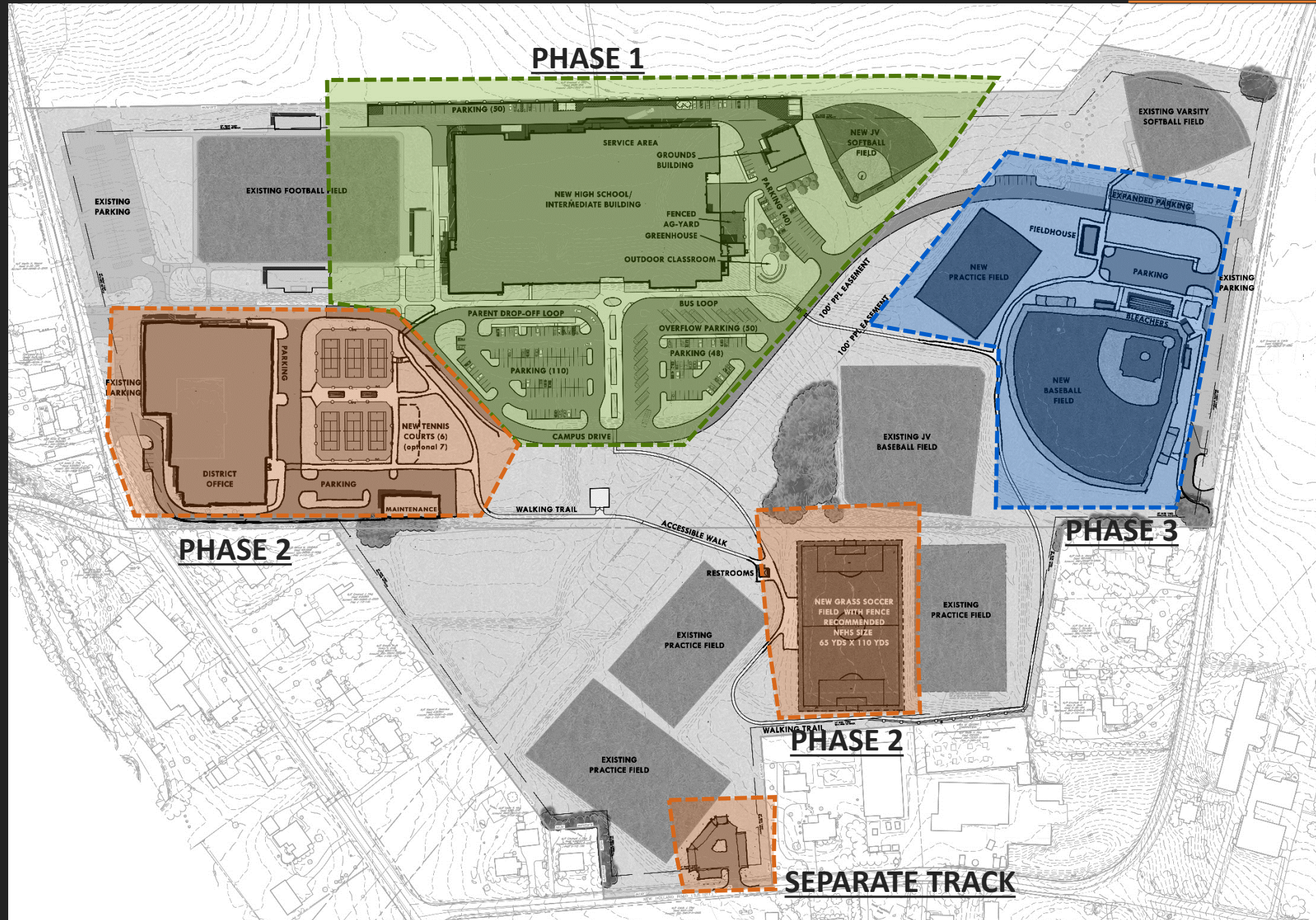
**PEQUEA VALLEY
SCHOOL DISTRICT
BOARD MEETING**

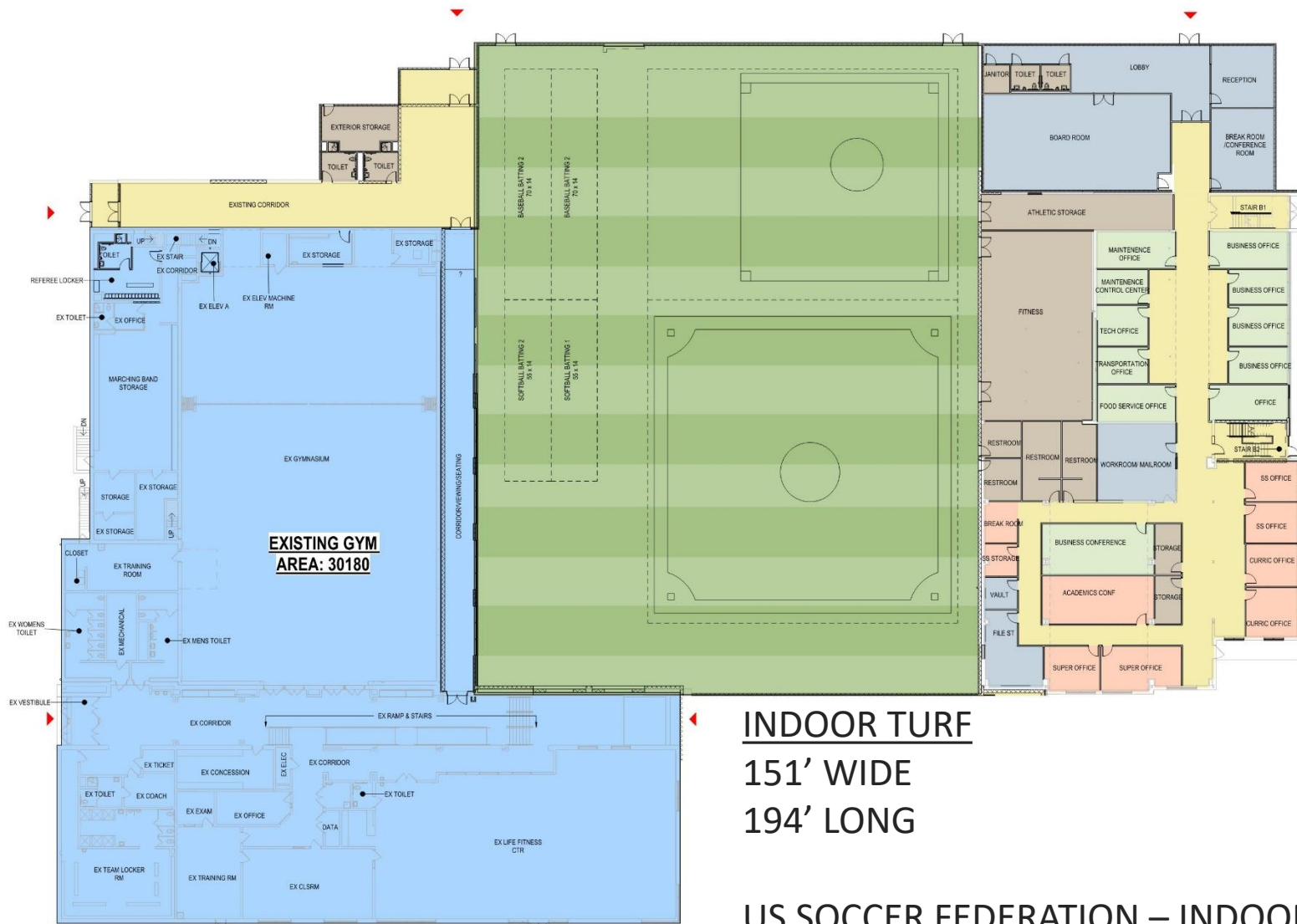
December 5, 2023

- **UPDATED SITE DESIGN SOLUTION**
- **PHASING PLAN**
- **UPDATED FLOOR PLANS**
- **SCHEDULE**
- **UPDATED ESTIMATE**

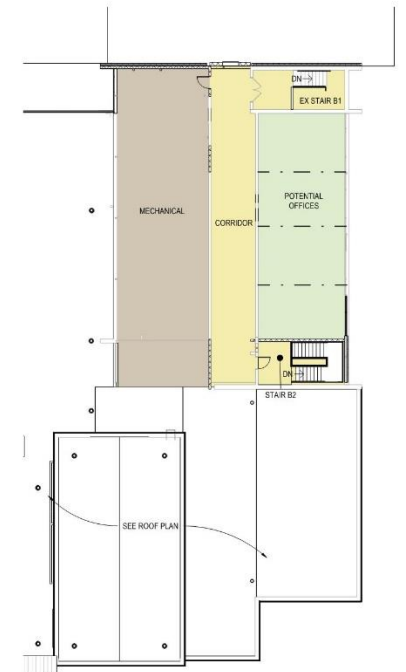
AGENDA





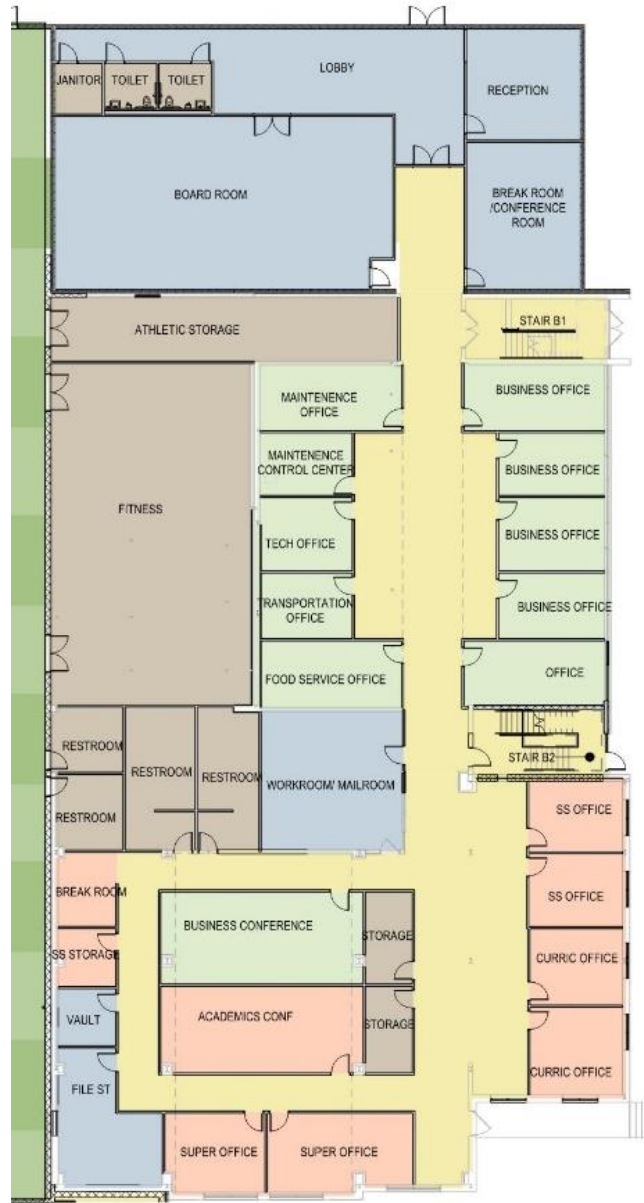


FIRST FLOOR

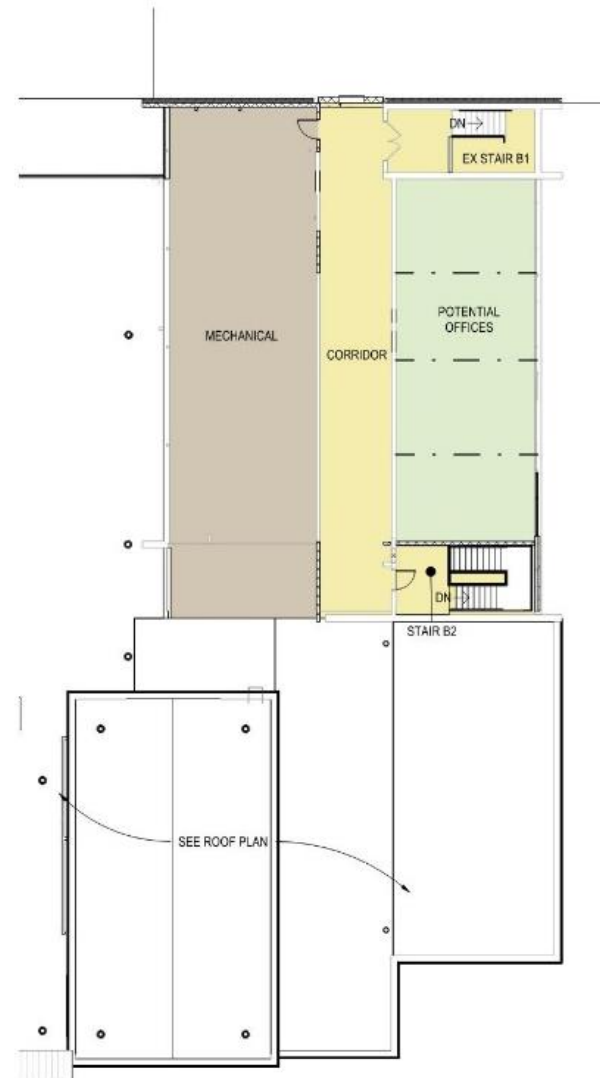


SECOND FLOOR





FIRST FLOOR



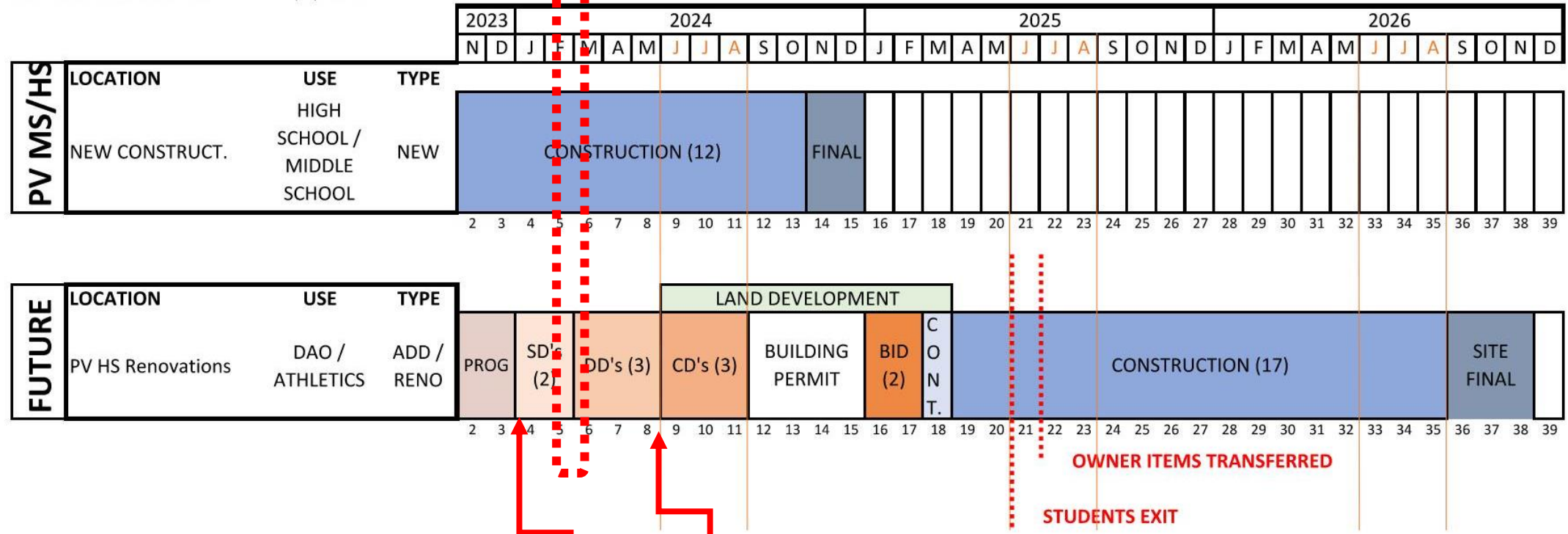
SECOND FLOOR

ESTIMATE OF PROBABLE COST

	3/1/2022 Update		12/5/2023 Revised Design Solution	12/5/2023 Revised Design Solution
Total Building Construction Cost	\$15,920,000	6% Inflation	\$ 18,546,196	\$ 16,927,928
Site Work	\$1,500,000	Budget Update	\$ 3,307,642	\$ 3,307,642
Total Project Costs	\$17,420,000		\$ 21,853,838	\$ 20,235,570
10% Estimating Range			\$ 24,039,222	\$22,259,127

PEQUEA VALLEY CONSTRUCTION PROJECTS

PRELIMINARY TIMELINE 11/7/2023



LAND DEVELOPMENT PROCESS
AUTHORIZE START OF DESIGN PROCESS

OWNER ITEMS TRANSFERRED

STUDENTS EXIT



Pequea Valley School District

Where Each Learner Counts



Crabtree, Rohrbaugh & Associates

www.cra-architects.com