

## Navigating AI in Education

Engaging Learners,  
Enhancing Instruction

### What is AI?



AI capabilities allow systems to identify patterns in data, learn from new data, and correct mistakes, resulting in a system that is capable of tasks that have, historically, relied on human intelligence.

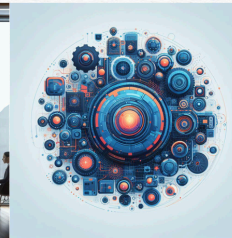
### AI Timeline of Events @ PV

- **November 2022 - ChatGPT released by OpenAI**
- December 2022 - Industries BUZZING about AI
- January 2023 - District Leadership Conversations
  - “Conservatively Curious Mindset” - staff access only
- Spring 2023 - Present to Faculty & Staff
  - AI Task Force - Prof Learning Opportunities - Early Access
- 2023-24 School Year - Continuous Conversations

### Generative AI



### What is ChatGPT?



**Generative AI:** Tools that create text, images, code, and sound based on vast datasets.

Generative AI tools such as Bard, Bing, and ChatGPT, are trained on massive amounts of data to recognize patterns and relationships between words, images, sounds and code. They use that understanding to generate brand-new, original, often creative outputs customized to the prompts users provide.

## ChatGPT is AI, but not all AI is like ChatGPT



Think of AI as  
an Assistant, a  
Tool, a  
Resource...

It cannot do the thinking for you...  
but it can potentially do some of  
the doing for you.

## AI Timeline of Events @ PV

- November 2022 - ChatGPT released by OpenAI
- **December 2022 - Industries BUZZING about AI**
- January 2023 - District Leadership Conversations
  - “Conservatively Curious Mindset” - staff access only
- Spring 2023 - Present to Faculty & Staff
  - AI Task Force - Prof Learning Opportunities - Early Access
- 2023-24 School Year - Continuous Conversations

## ChatGPT Sprints to One Million Users

Time it took for selected online services  
to reach one million users



\* one million backers \*\* one million nights booked \*\*\* one million downloads  
Source: Company announcements via Business Insider/LinkedIn



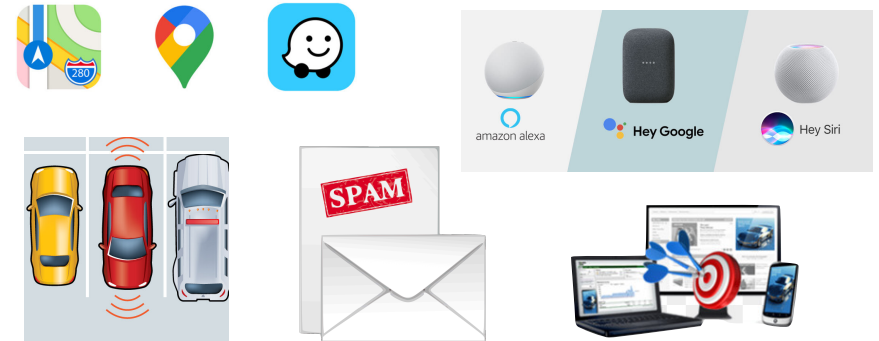
statista

## AI is Not “New”

Started as early as the 1940s in concept.

1940 - Enigma is decoded in WWII  
 1950 - Alan Turing releases a test to test for machine intelligence  
 1955 - John McCarthy invents the term “AI”  
 1964 - First Chatbot invented  
 1995 - Alice the Chabot intro'd by Richard Wallace  
 2008 - Birth of Siri, Voice Recognition!  
 2014 - Alexa becomes a primary Amazon tool  
 2016 - Google Home voice assistant

## AI in Your Daily Life



## AI Timeline of Events @ PV

- November 2022 - ChatGPT released by OpenAI
- December 2022 - Industries BUZZING about AI
- **January 2023 - District Leadership Conversations**
  - “Conservatively Curious Mindset” - Controlled Access
- **Spring 2023 - Present to Faculty & Staff**
  - AI Task Force - Prof Learning Opportunities - Staff Access
- **2023-24 School Year**
  - Continuous Dialogue - Embrace & Respect vs Fear

## We’ve embraced scary technology before...



## Three Components of AI In Education

**Ethics  
&  
Bias**

**Guidelines  
For  
Use**

**Teaching  
&  
Learning**

## Ethics & Bias



- **Ethical Use**
  - Protect Privacy/PII - **#1 Priority**
  - Responsible Use: Digital Citizenship and AI Literacy K-12
- Biased Machine Learning

## Bias Example

**When I ask you to picture a hacker, what images/ characteristics come to mind?**

## Is this what you pictured?





## Guidelines For Use

- Terms of Service and Privacy Policies



### 1. Registration and Access

You must be at least 13 years old to use the Services. If you are under 18, you must have your parent or legal guardian's permission to use the Services. If you use the Services on behalf of another person or entity, you must have the authority to accept the Terms on their behalf. You must provide accurate and complete information to



### Who can access Canva for Education?

Canva for Education is free for eligible teachers and students. It's available all over the world, and isn't restricted to any country.

## AI GUIDELINES FOR CLASSROOM USE



### Option #1 - RED LIGHT

**Collaboration with AI Tools is not permitted on this activity; all work must be original creation.**

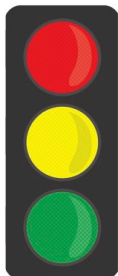
#### Example Instruction:

"Do not use AI tools for this assignment. All content must be original, and any use of AI will be treated as plagiarism."

#### Application:

- Traditional quizzes and exams designed to assess individual knowledge.
- Short-answer questions that require personal reflection or opinion.
- Activities that are part of a larger assessment, where individual contributions need to be isolated for fair evaluation.

## AI GUIDELINES FOR CLASSROOM USE



### Option #2 - YELLOW LIGHT

**Learners may use AI tools for specific parts of their assignment, but are required to obtain permission from their facilitator first.**

#### Example Instruction:

"You can employ AI tools to assist brainstorming or initial research, but the main content, arguments, and conclusions should be your own."

#### Application:

- Long-term projects that require research and synthesis of information.
- Group activities where individual contributions are part of a collective grade.
- Case studies or problem-solving tasks that could benefit from multiple perspectives.

## AI GUIDELINES FOR CLASSROOM USE



### Option #3 - GREEN LIGHT

**Learners are encouraged to use AI tools, but must discuss with their facilitator how they plan to use and cite these tools in their work.**

#### Example Instruction:

"You may use AI tools as you see fit to enhance your assignment and demonstrate your understanding of the topic, but proper citation is required."

#### Application:

- Creative writing assignments where AI can serve as a brainstorming tool.
- Research projects that involve gathering and analyzing large sets of data.
- Activities that encourage innovation and exploration, such as coding or design tasks.

**Code of Conduct - Academic Dishonesty**

## Teaching & Learning

### How can AI help our learners?



## AI Supports Our MCL Vision!



### MCL LEARNING VISION



- Learning occurs when a positive relationship is developed with each PV Learner
- Learning occurs when the environment is focused around Autonomy, Mastery and Purpose
- Learning will occur in flexible environments
- Learning is a collaborative activity
- Learning occurs when associated with a child's interests, strengths, and ZPD
- Learning will allow EACH PV child to receive his/her "First Choice"



## Teaching & Learning

### • Leveling Readers and Personalization

### Get Your Kids to Love Reading with Interest-Driven, Interactive Stories – powered by AI!

Our engaging choose-your-own-adventure stories are personalized by AI to match your child's exact interests and reading level!

SIGN UP FOR FREE

#### Discover the Magic of AI-Enhanced Reading Adventures

- Personalized for your child**  
Pick your child's interests, and our AI will create captivating stories catering to their unique interests.
- Tailored to their reading level**  
We generate stories that match your child's reading ability, making them easy to read and understand.
- Never run out of stories to read**  
With a never-ending supply of interactive stories, your child will always be eager to read more!

Step 1

- Try to read the text as it is (at least a few paragraphs)

Step 2

- Identify what the biggest barrier is - big words? weird phrases? long sentences?

Step 3

- Use one of these prompts to ask the AI to rewrite it in a lower reading level.

Even you, from confident advanced readers to people who are just beginning to grow their reading skills, run into this problem. You have to read something and you're trying to understand, but the way it was written is non-stop confusing. AI is awesome at solving this problem by re-writing things in a simpler way.

Identify what about the text is giving you the most trouble, use the prompt here that sounds like it will fix your problem:

Prompt 1

Make this text understandable to a fifth-grader by using common words and simple language while retaining the original meaning.

[Copy the text you are trying to understand here]

## Teaching & Learning

### • English Language Learners

- Differentiate texts to simplify and adjust reading level
- OCR technology to translate printed and digital materials
- Translation - AI is more accurate than Google Translate
- General help for facilitators to accommodate for level 1 ELLs



## Teaching & Learning

- Engaging Learning Experiences for ALL

- Interactive Media Connections
- Voice and Choice Boards
- Personal Tutors, Editors and Feedback
- General help with ideas to increase engagement “Help me make an engaging activity for X lesson where learners must get out of their seats at least twice and interact with another student at least 3 times”



## Teaching & Learning

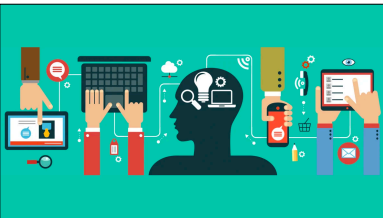
### Immersive Career Exploration With Transfr VR

Transfr's Career Exploration enables learners to discover a wide array of career possibilities and make informed choices about their future careers.



## Teaching & Learning

*How can AI help our facilitators?*



## NEW 21st Century Skills

- Fact-Checking AI
- Prompt Engineering

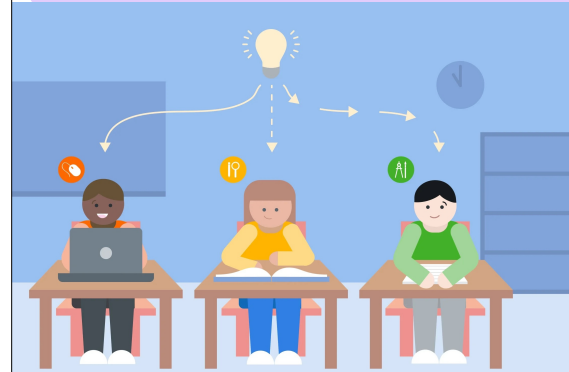
## Teaching & Learning

Efficiencies of AI allow facilitators more time for learner connection and 1-on-1 or small group support!



## Teaching & Learning

Improved Personalization: Tailoring learning experiences to individual learner needs



## Teaching & Learning

- **Curate Educational Resources:** Outlines, lesson plans, rubrics, presentations, discussion prompts, assessments, etc.
- **Productivity and Efficiency:** Optimizing time and resources, automating processes, communication and feedback
- **Data-Driven Insights:** Utilizing analytics to improve teaching strategies and learner outcomes



## What AI Can Do

- Brainstorm ideas
- Feedback & editing suggestions
- Review your work
- Reading & writing assistance
- Tutoring & support

## What AI Cannot Do

- Care for them
- Motivate them to learn
- Be empathetic
- Understand their learning style
- Provide life guidance



- Continue the exploration of AI tools and platforms
- Collaborate on ways to enhance teaching & learning using AI
- Provide additional professional learning opportunities for staff and administrators
- Support facilitators in teaching learners acceptable and responsible use of AI tools



NEXT  
STEPS