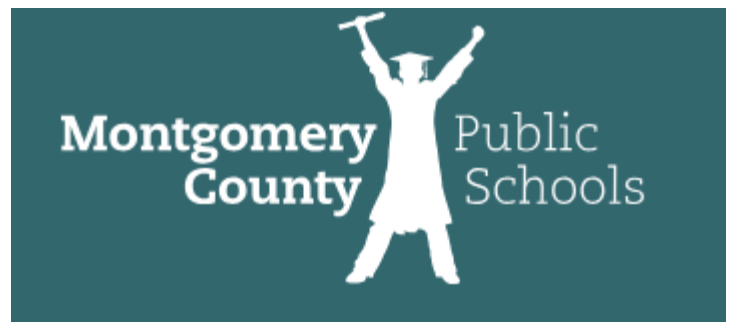




FutureThink

PLAN TO EMPOWER

FINAL REPORT



Enrollment Projection Study
January 30, 2024

ACKNOWLEDGEMENTS

FutureThink would like to extend our appreciation to the Montgomery County Public Schools for selecting us to assist them in developing these enrollment projections. Thank you to Dr. Annie Whitaker and Angie Bland for providing information necessary in the completion of this report.

As a consulting team, we appreciate this opportunity to serve your school community as you embark on your vision for the future of education in the Montgomery County Public Schools.

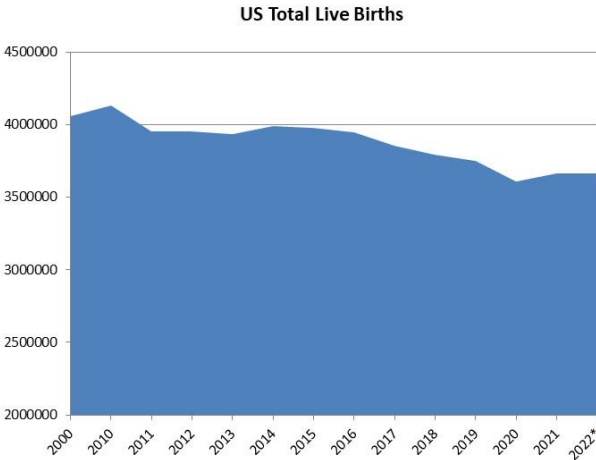
Tracy Healy

President

Montgomery County Public Schools

ENROLLMENT PROJECTION INTRODUCTION

The United States as a whole continues to undergo major shifts in public student enrollment. Births are a significant part of this shift. From 2000 to 2010, births increased then declined until 2014 when there was a slight uptick. Since 2014, there has been steady decline reaching an all-time low in 2020. The decrease from 2019 to 2020 was approximately 4 percent. However, in 2021, there was a slight uptick of 1.5 percent. Births dropped slightly from 2021 to 2022.



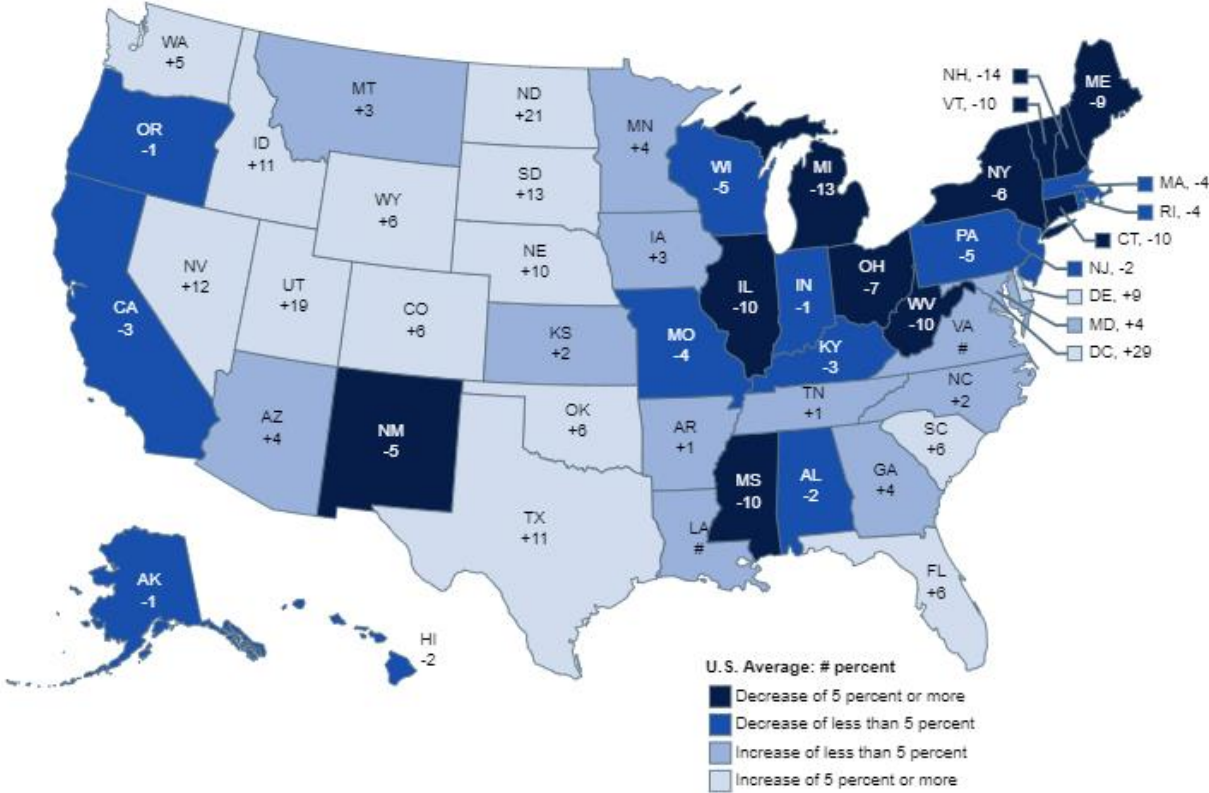
Source: CDC, NVSS, National Vital Statistics Reports, Report No. 28, June 2023

From the 2019-20 to the 2020-21 school year, total public school enrollment in Pre-K - 12 dropped from 50.8 million to 49.4 million students. From 2009-10 to the 2019-20 school year, however, enrollment had increased overall by 1.4 million.

The figure on the following page illustrates the change in Pre-K - 12 public school enrollment from the 2009-10 to the 2020-21 school year. States with growth in enrollment were primarily in the southeast and west. Virginia experienced an increase of less than 0.5 percent.

Montgomery County Public Schools

Figure 2. Percentage change in public elementary and secondary school enrollment, categorized into specific ranges, by state: Fall 2009 to fall 2020



Rounds to zero.

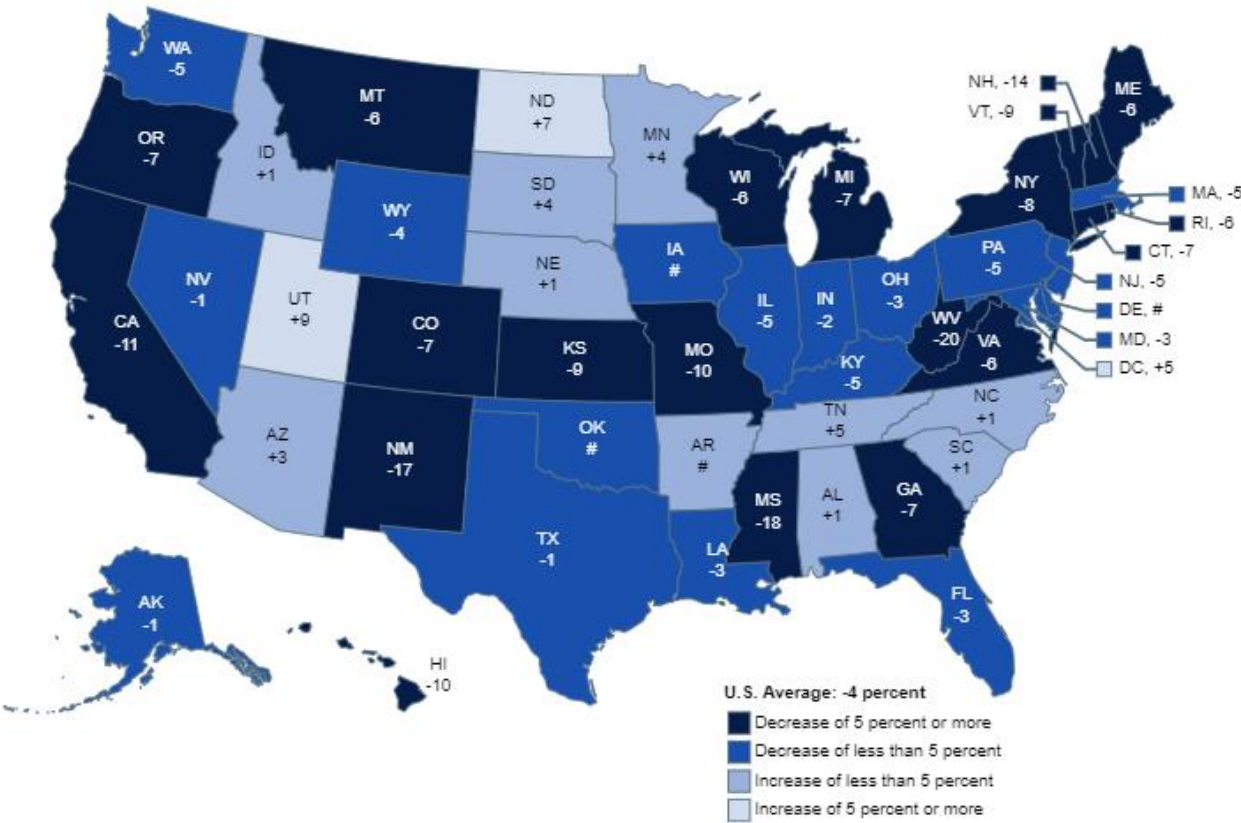
NOTE: U.S. average is for the 50 states and the District of Columbia. Data include both traditional public schools and public charter schools. Includes imputations for nonreported prekindergarten enrollment in California and Oregon for fall 2020. Includes imputations for nonreported enrollment for all grades in Illinois for fall 2020. Categorizations are based on unrounded percentages.

SOURCE: U.S. Department of Education, National Center for Education Statistics, Common Core of Data (CCD), "State Nonfiscal Survey of Public Elementary/Secondary Education," 2009-10 and 2020-21 Preliminary. See Digest of Education Statistics 2021, table 203.20.

Montgomery County Public Schools

The figure below illustrates the projected change in Pre-K-12 public school enrollment from the 2020-21 to the 2030-31 school year. Growth is expected to continue primarily in parts of the southeast and upper midwest. Virginia is projected to experience a decrease of 6 percent.

Figure 3. Projected percentage change in public elementary and secondary school enrollment, categorized into specific ranges, by state: Fall 2020 to fall 2030



Rounds to zero.

NOTE: U.S. average is for the 50 states and the District of Columbia. Data include both traditional public schools and public charter schools. Includes imputations for nonreported prekindergarten enrollment in California and Oregon for fall 2020. Includes imputations for nonreported enrollment for all grades in Illinois for fall 2020. Projections in this figure were calculated after the onset of the coronavirus pandemic and take into account the expected impacts of the pandemic. Categorizations are based on unrounded percentages.

SOURCE: U.S. Department of Education, National Center for Education Statistics, Common Core of Data (CCD), "State Nonfiscal Survey of Public Elementary/Secondary Education," 2020-21 Preliminary; and State Public Elementary and Secondary Enrollment Projection Model, through 2030. See *Digest of Education Statistics 2021*, table 203.20.

ENROLLMENT PROJECTION METHODOLOGIES

When projecting future enrollments, it is vital to track the number of births, the patterns of enrollment, the amount of new housing activity, and the change in household composition.

In addition, any of the following factors could cause a significant change in projected student enrollments:

- ▶ Boundary adjustments
- ▶ New school openings
- ▶ Changes/additions in program offerings
- ▶ Preschool programs
- ▶ Change in grade configuration
- ▶ Interest rates/unemployment shifts
- ▶ Magnet/charter/private school opening or closure
- ▶ Zoning changes
- ▶ Unplanned new housing activity
- ▶ Planned, but not built, housing

Obviously, certain factors can be gauged and planned for far better than others. For instance, it may be relatively straightforward to gather housing data from local builders regarding the total number of lots in a planned subdivision and calculate the potential student yield. However, planning for changes in the unemployment rate, and how these may either boost or reduce public school enrollment, proves more difficult. In any case, it is essential to gather a wide variety of information in preparation for producing enrollment projections.

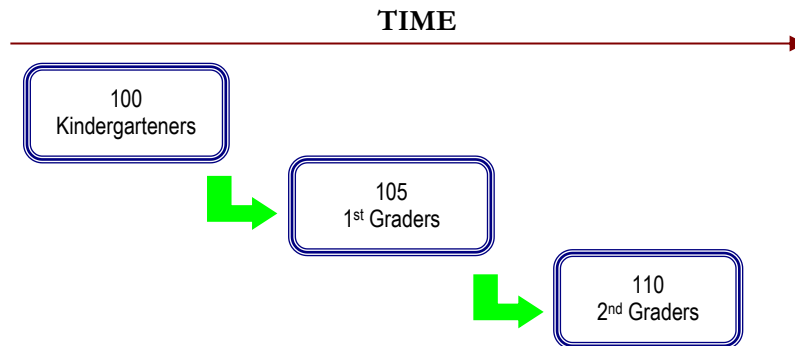
When looking ahead at a school Division's enrollment over the next two, five, or ten years, it is helpful to approach the process from a global perspective. For example: How many new homes have been constructed each year? How many births have occurred each year in relation to the resident population? Is housing experiencing a turnover – if so, what is the composition of families moving in/out? Are more or less students attending private school or being home-schooled? What has the unemployment rate trend been over the past ten years? What new educational policies are in place now that could affect student enrollment figures?

The data sets generated from questions such as these have led to the development of general methodologies to project future student enrollments. They are as follows:

Montgomery County Public Schools

Cohort Survival Method

A cohort is a group of persons [in this case, students]. The cohort survival projection methodology uses previous live birth data and historical student enrollments to “age” a known population or cohort throughout the school grades. For instance, a cohort begins when a group of kindergarteners enrolls in grade K and moves to first grade the following year, second grade the next year, and so on.



A “survival ratio” is developed to track how this group of students grew or shrunk in number as they moved through the grade levels. By developing survival ratios for each grade transition [i.e., 2nd to 3rd grade] over a ten-year period of time, patterns emerge and can be folded into projections by using the survival ratios as a multiplier.

For example, if student enrollment has consistently increased from the 8th to the 9th grade over the past ten years, the survival ratio would be greater than 100% and could be multiplied by the current 8th grade to develop a projection for next year’s 9th grade. This methodology can be carried through to develop ten years of projection figures. Because there is not a grade cohort to follow for students coming into kindergarten, live birth counts are used to develop a survival ratio. Babies born five years previous to the kindergarten class are compared in number, and a ratio can be developed to project future kindergarten enrollments.

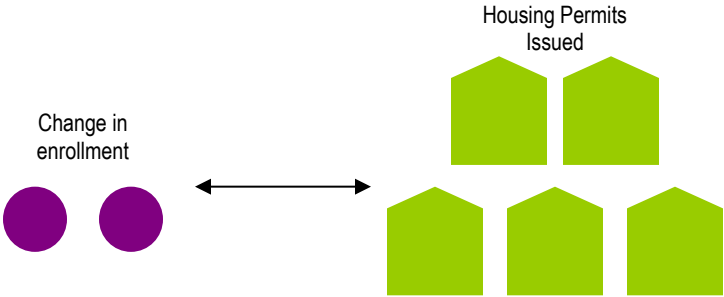
The cohort survival method is useful in areas where population is stable [relatively flat, growing steadily, or declining steadily], and where there have been no significant fluctuations in enrollment, births, and housing patterns from year to year.

Housing

Enrollment projections can also be determined by analyzing the housing data for the areas that make up a school Division. Yield factors can be established by comparing the historic change in enrollment from year to year divided by the total number of building or occupancy permits issued. For example, if student enrollment has increased by approximately 100 students each year and approximately 200 building permits have been issued each year for the past ten years, then the yield factor would be approximately .5 students per building permit.



Montgomery County Public Schools

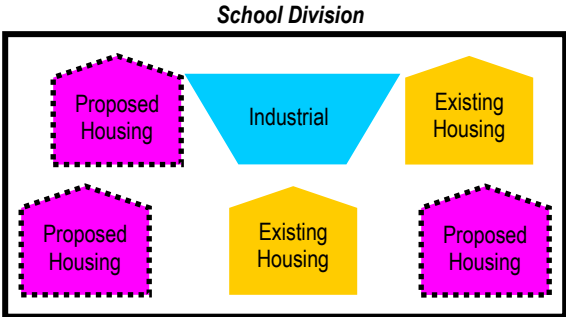


Once yield factors are established, the number of new students per year can be estimated by multiplying the yield factor by the number of projected new housing units. This method is effective when the rate of student enrollment far exceeds the live birth rate.

If housing demolitions are occurring in a Division, these must also be taken into account. For instance, if housing demolitions/withdrawals have increased rapidly over recent years while new housing starts have remained relatively constant over many years, the conclusion may be that some of the new housing starts will simply be replacements for the families displaced by the demolitions. Of course, housing value and household composition would need to be further analyzed to confirm that this is indeed the case. It is possible that enrollment may remain flat or even decline even though there is new housing occurring in the area.

Land-Saturation Analysis

Housing data also drives the land-saturation analysis enrollment methodology. In areas where there is a high rate of development and the future development patterns in the area are clear, a “build-out” scenario can be developed. The scenario takes into consideration the remaining acreage to be developed, planned rate of completion, zoning policies, density per acre, type of housing, and ratios of school-age children per household type. This method is particularly useful in areas experiencing rapid growth.



Montgomery County Public Schools

HISTORICAL ENROLLMENT

Over the past ten years, student enrollment in the Montgomery County Public Schools has decreased by 114 students. Total enrollment for the 2023-24 school year is 9,589, a decrease of 141 students from the previous school year. However, since 2019-20, enrollment has decreased by 426 students, or 4 percent.

The following table and graphs illustrate the Division's enrollment history from 2014-15 through 2023-24.

**Montgomery County Public Schools
Historical Enrollment**

Grade	2014-15	2015-16	2016-17	2017-18	2018-19	2019-20	2020-21	2021-22	2022-23	2023-24
Pre-K	234	242	195	202	225	200	198	202	202	211
K	753	782	717	782	726	720	673	670	628	633
1	731	732	758	736	787	757	665	701	688	635
2	814	745	711	774	737	797	709	666	722	678
3	695	791	740	701	782	748	748	701	684	733
4	731	691	799	759	716	769	712	743	712	673
5	672	711	687	800	767	731	722	715	765	716
6	746	690	743	696	795	775	706	747	734	777
7	648	741	683	744	723	818	756	721	748	749
8	744	646	738	682	735	724	816	750	722	752
9	820	799	705	796	731	805	739	880	808	763
10	723	786	758	689	795	718	788	740	847	789
11	737	699	774	753	671	783	709	778	730	803
12	655	718	666	752	734	670	759	681	740	677
Pre-K - 12 Total	9,703	9,773	9,674	9,866	9,924	10,015	9,700	9,695	9,730	9,589

Source: Montgomery County Public Schools

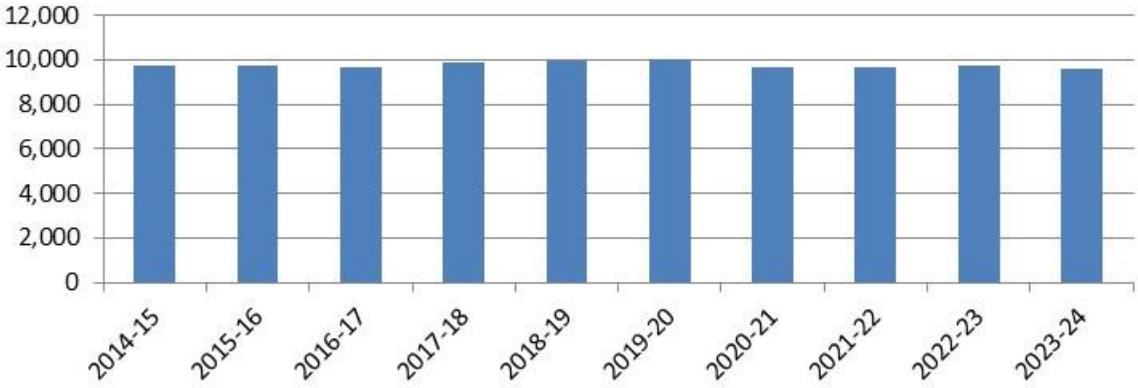
**Montgomery County Public Schools
Historical Enrollment by Grade Group**

Grade	2014-15	2015-16	2016-17	2017-18	2018-19	2019-20	2020-21	2021-22	2022-23	2023-24
Pre-K	234	242	195	202	225	200	198	202	202	211
K - 5	4,396	4,452	4,412	4,552	4,515	4,522	4,229	4,196	4,199	4,068
6 - 8	2,138	2,077	2,164	2,122	2,253	2,317	2,278	2,218	2,204	2,278
9 - 12	2,935	3,002	2,903	2,990	2,931	2,976	2,995	3,079	3,125	3,032
Pre-K - 12 Total	9,703	9,773	9,674	9,866	9,924	10,015	9,700	9,695	9,730	9,589

Source: Montgomery County Public Schools

Montgomery County Public Schools

Montgomery County Public Schools
Historical Enrollment



Montgomery County Public Schools

LIVE BIRTH DATA

Utilization of live birth data is recommended when projecting future kindergarten enrollments. This data provides a helpful overall trend. Large bubbles in birth counts, both up or down, can also be planned for and anticipated by the Division.

In addition, the live birth counts are used in determining a birth-to-kindergarten survival ratio. This ratio identifies the percentage of children born in a representative area who attend kindergarten in the Division five years later. The survival ratios for birth-to-kindergarten as well as grades 1-12 can be found later in this report.

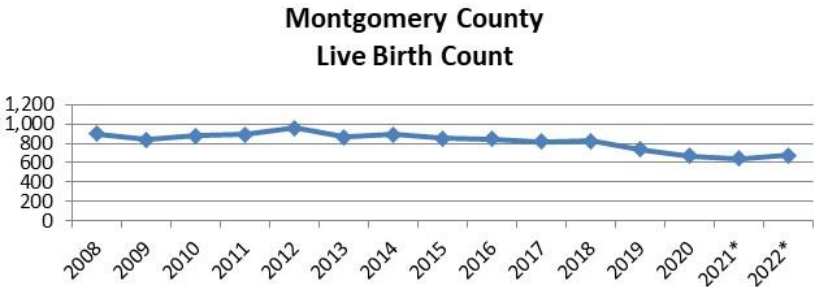
The chart and graph that follow illustrate live birth counts in Montgomery County. Birth counts peaked in 2012 at 961, and have since dropped to below 740 the last 4 years.

**Montgomery County
Live Birth Count
2008-2022**

Year	Total
2008	895
2009	840
2010	877
2011	891
2012	961
2013	867
2014	892
2015	851
2016	842
2017	819
2018	825
2019	738
2020	673
2021*	646
2022*	676

Source: Virginia Department of Health, Division of Health Statistics

*preliminary



Montgomery County Public Schools

DEMOGRAPHICS

General demographic information for the Montgomery County Public Schools follows.

General Demographic Information

	Montgomery County	Virginia
Per Capita Income	\$32,776	\$47,210
Median Household Income	\$65,270	\$57,249
Persons Below Poverty	24.9%	10.0%

Source: US Census, American Community Survey, 2022 5-Year Estimates

Total Population

	2010 Census	2020 Census
Montgomery County	94,392	99,721

Source: 2010: DEC Summary File 2; 2020 Decennial Census

Following are block group estimates and projections provided by ESRI Business Information Solutions (ESRI BIS). ESRI BIS uses a time series of estimates from the U.S. Census Bureau that includes the latest estimates and intercensal estimates adjusted for error of closure. The Census Bureau's time series is consistent, but testing has revealed improved accuracy by using a variety of sources to track county population trends.

ESRI BIS also employs a time series of building permits and housing starts plus residential deliveries. Finally, local data sources that tested well against Census 2000 are reviewed. Data sources are integrated and then analyzed by Census Block Groups.

Sources of data include:

- ▶ Supplementary Surveys of the Census Bureau
- ▶ Bureau of Labor Statistics' (BLS) Local Area Unemployment Statistics
- ▶ BLS Occupational Employment Statistics
- ▶ *InfoUSA*
- ▶ U.S. Bureau of the Census' Current Population Survey
- ▶ National Planning Association Data Service

Montgomery County Public Schools

Below is a list of definitions as they appear on the U.S. Census Bureau website, to aid in interpretation of the following tables and maps.

Household:

A household includes all the people who occupy a housing unit as their usual place of residence.

Average family size:

A measure obtained by dividing the number of members of families by the total number of families (or family householders).

Family household (Family):

A family includes a householder and one or more people living in the same household who are related to the householder by birth, marriage, or adoption. All people who are related to the householder are regarded as members of his or her family. A family household may contain people not related to the householder, but those people are not included as part of the householder's family in census tabulations. Thus, the number of family households is equal to the number of families, but family households may include more members than do families. A household can contain only one family for purposes of census tabulations. Not all households contain families since a household may comprise a group of unrelated people or one person living alone.

Householder:

The person, or one of the people, in whose name the home is owned, being bought, or rented. If there is no such person present, any household member 15 years old and over can serve as the householder for the purposes of the census. Two types of householders are distinguished: a family householder and a nonfamily householder. A family householder is a householder living with one or more people related to him or her by birth, marriage, or adoption. The householder and all people in the household related to him are family members. A nonfamily householder is a householder living alone or with nonrelatives only.



Montgomery County Public Schools

The following tables illustrate the current estimates and 5-year population projections based on block groups that comprise the Division, indicating areas of current and projected growth. The tables have been developed to determine selected age group projections and projections for household income, family size, and family income.

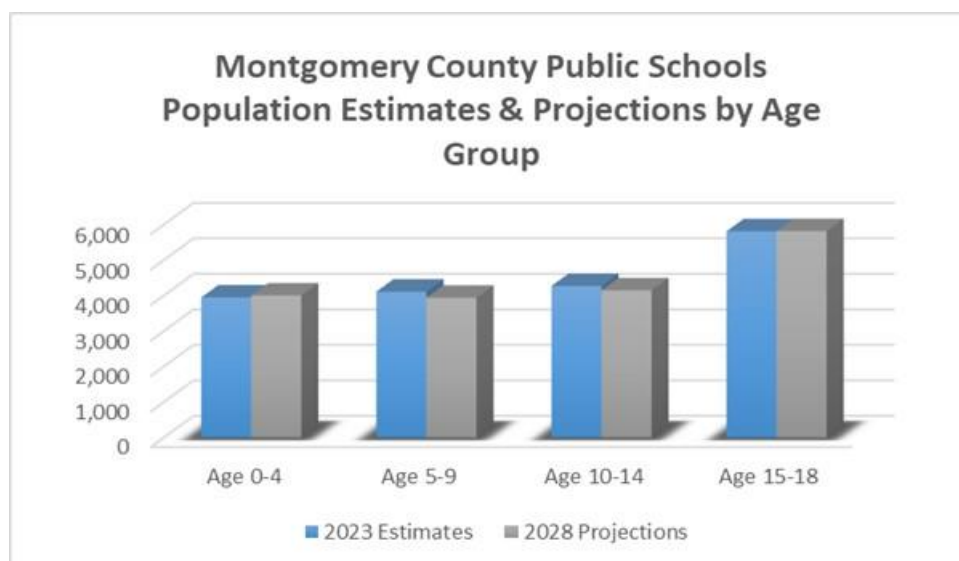
The total population in the Division is 100,332. This population is projected to decrease by 252 people, or less than 1% over a 5-year period.

The 0-18 year-old population in the Division currently totals 18,153. This population is projected to decrease by 236 children, or approximately 1 percent.

The median age is projected to increase by approximately 1% from 29.2 to 29.6 years of age. Please note that this data is skewed by the university students living in the area. If the census block groups containing the University and surrounding apartments, the estimated and projected median ages would increase to 37.2 and 38.3 years of age.

Montgomery County Public Schools	2023 Estimates	2028 Projections	Change 2023-28	Change 2023-28 (%)
Total Population	100,332	100,080	-252	-0.3%
Age 0-4	3,950	4,006	56	1.4%
Age 5-9	4,114	3,941	-173	-4.2%
Age 10-14	4,274	4,151	-123	-2.9%
Age 15-18	5,815	5,819	4	0.1%
Total Age 0-18	18,153	17,917	-236	-1.3%
Median Age (entire Division)	29.2	29.6	0.4	1.4%
Median Age (without Virginia Tech and surrounding Blacksburg apartments)	37.2	38.3	1.1	3.0%

Source: ESRI



Montgomery County Public Schools

Median and average household incomes in the Division are projected to increase by approximately 14% and 15%, respectively over a 5-year period. The average family size is projected to increase slightly, and the number of family households is projected to decrease by approximately 1 percent.

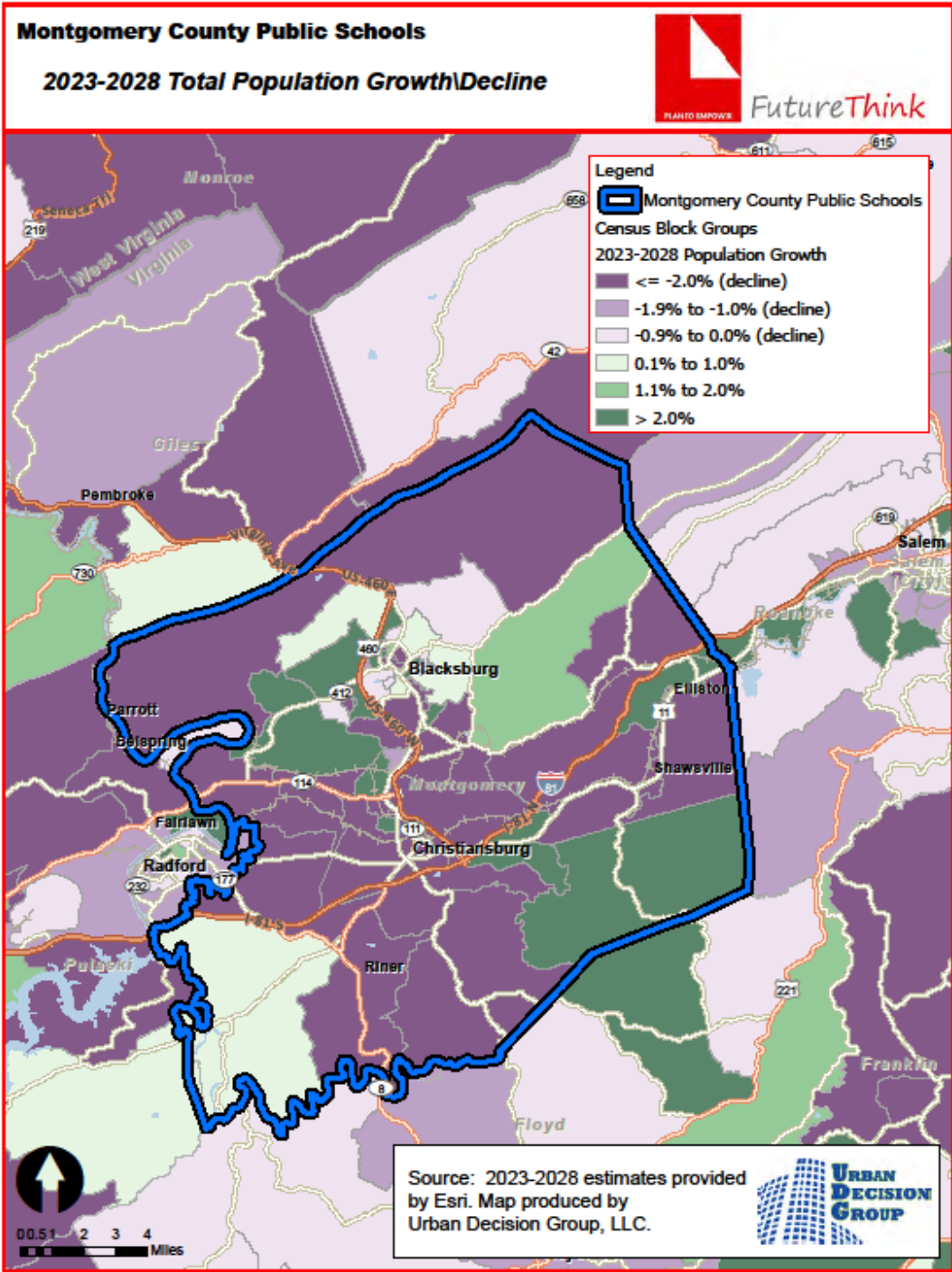
Montgomery County Public Schools	2023 Estimates	2028 Projections	Change 2023-28	Change 2023-28 (%)
Median Household Income	\$56,814	\$64,491	\$7,677	13.5%
Average Household Income	\$82,328	\$94,482	\$12,154	14.8%
Average Family Size	2.90	2.91	0.01	0.3%
Total Family Households	19,234	19,010	-224	-1.2%

Source: ESRI

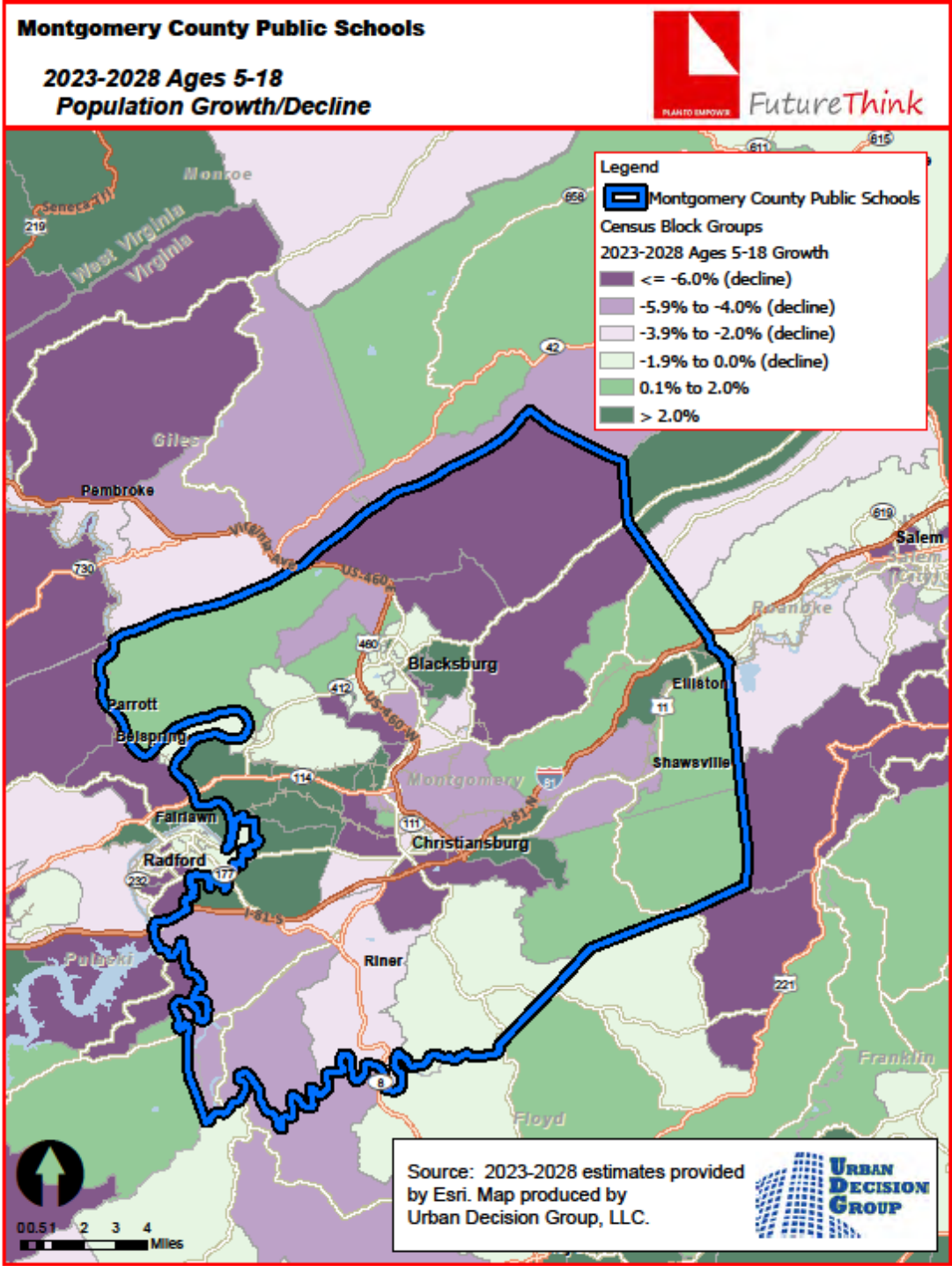
The maps on the following pages illustrate the data identified in the tables. The color coding identifies areas within the Division that may be increasing or decreasing at different rates than others.



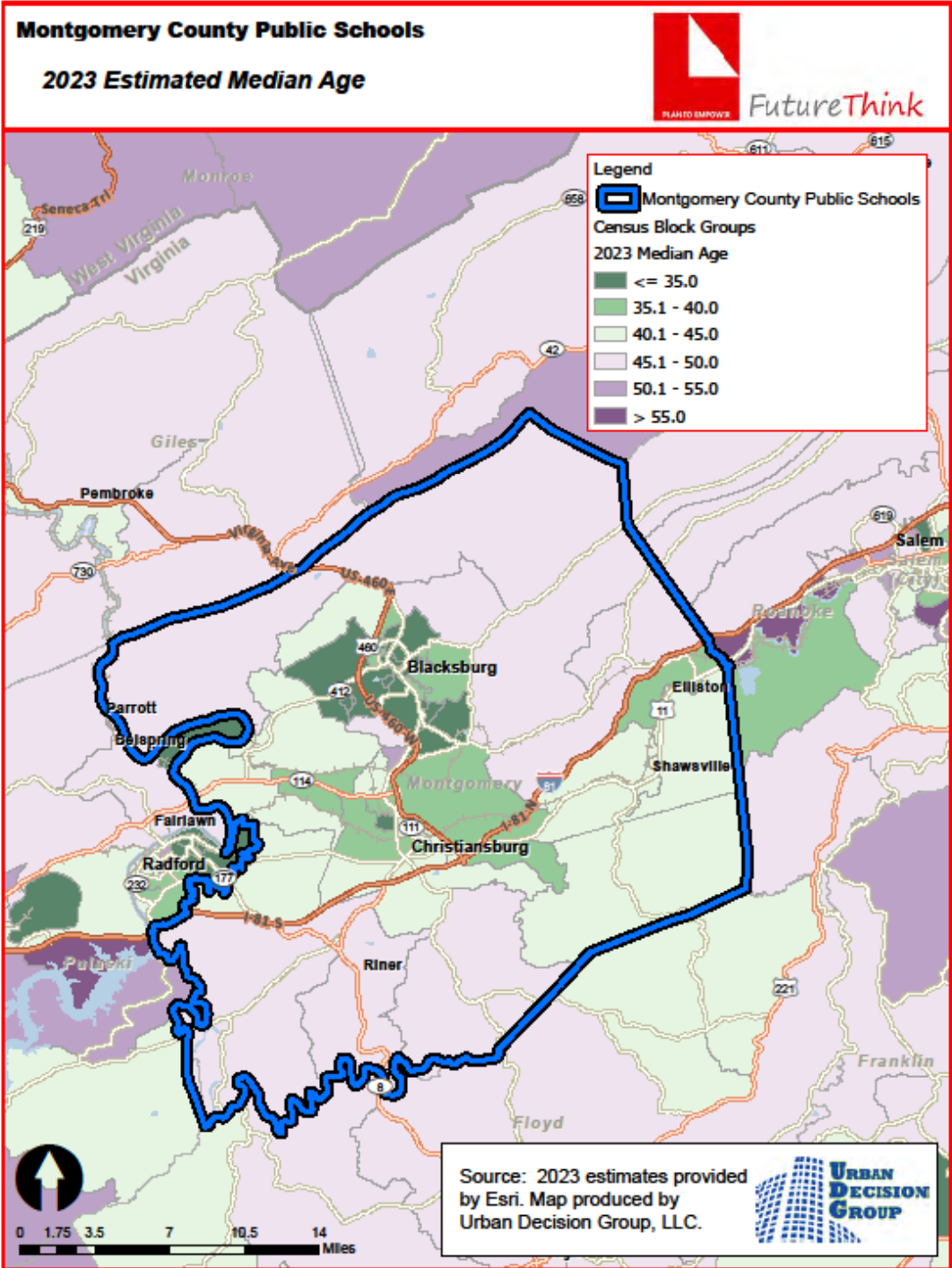
Montgomery County Public Schools



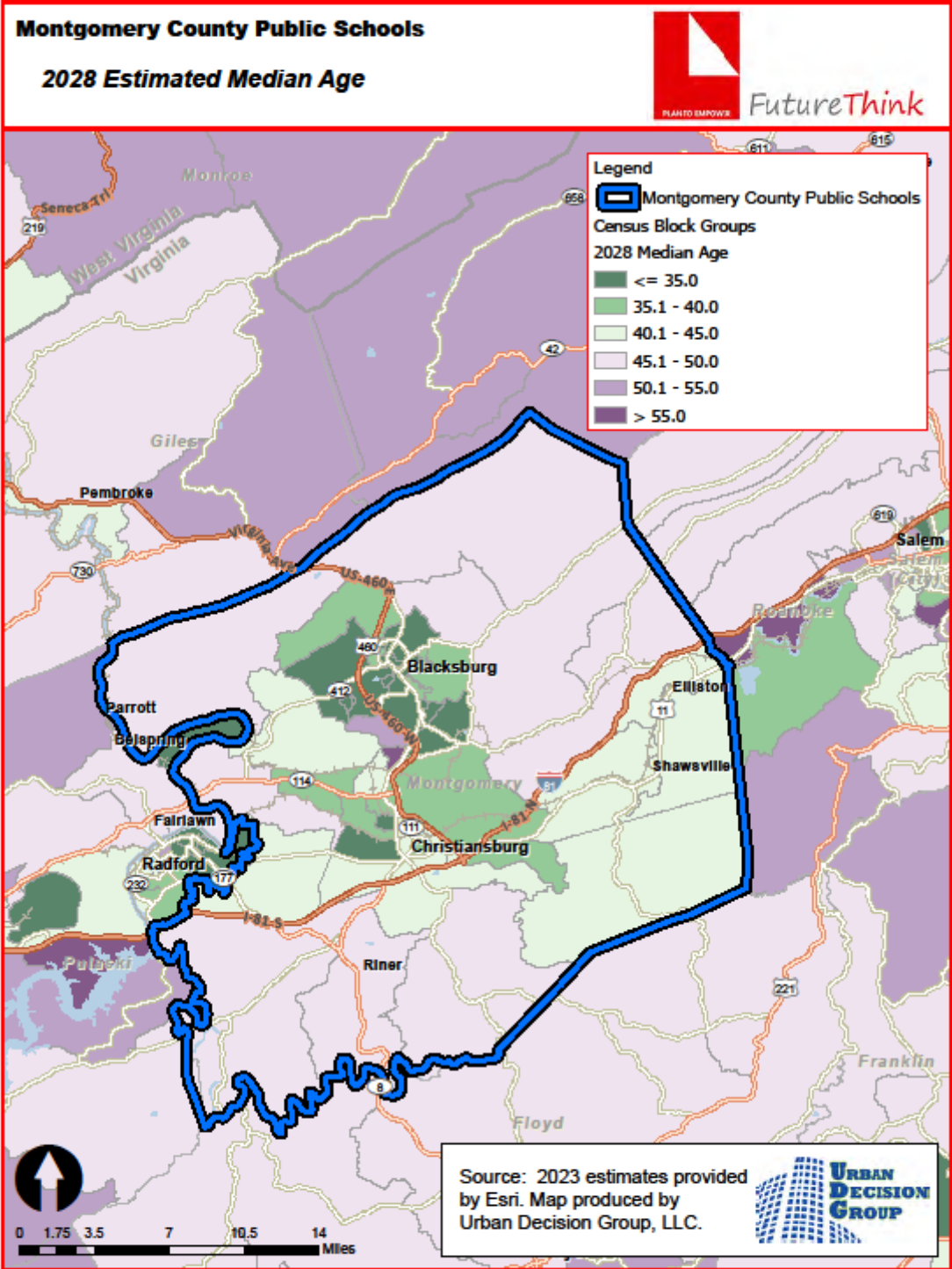
Montgomery County Public Schools



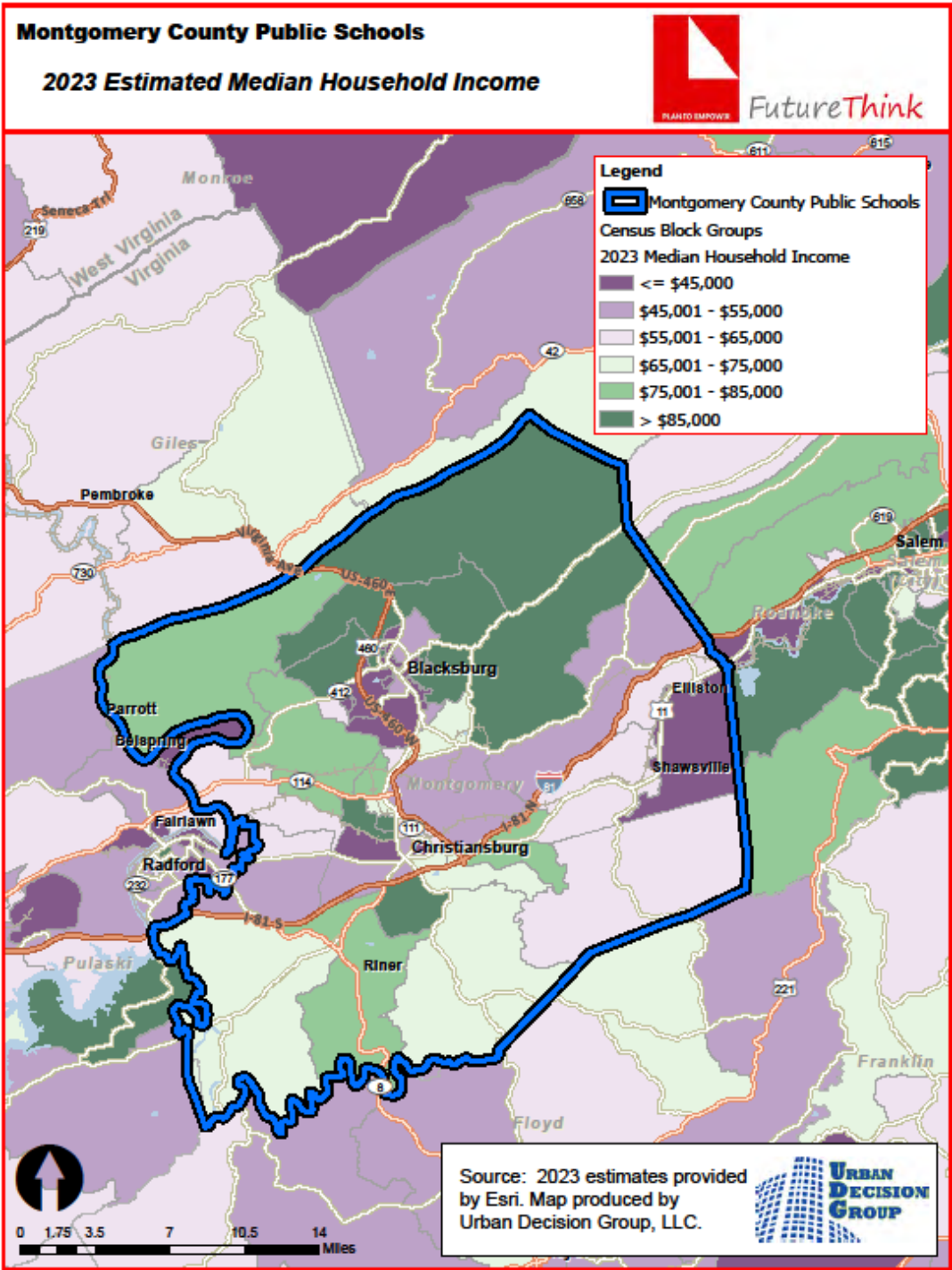
Montgomery County Public Schools



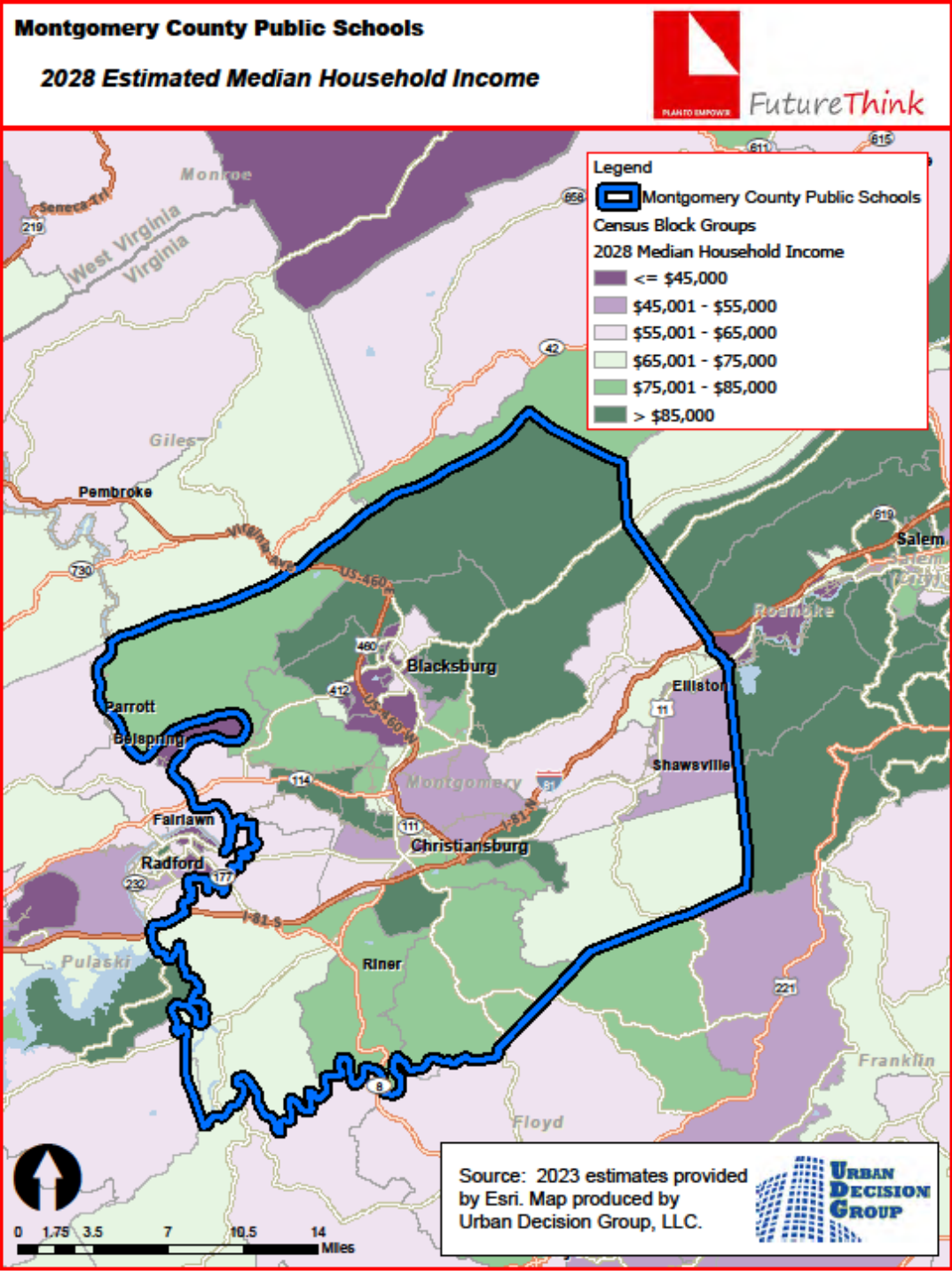
Montgomery County Public Schools



Montgomery County Public Schools



Montgomery County Public Schools



Montgomery County Public Schools

HOUSING INFORMATION

The total number of new single-family dwellings in Blacksburg, Christiansburg, and Montgomery County is illustrated in the table below. Permits peaked in 2015 for Blacksburg, in 2016 for Christiansburg, and in 2017 for the County.

of Building Permits Issued for Single Family Dwellings

Year	Blacksburg	Christiansburg	Montgomery County
2013	50	75	176
2014	65	71	181
2015	231	98	374
2016	132	167	338
2017	98	97	382
2018	58	146	302
2019	45	115	260
2020	42	107	275
2021	73	102	269
2022	93	45	247
2023*	60	62	300

Source: SOCDs Building Permits Database

*preliminary through October 2023

New housing development is illustrated in the following table. A total of 1,278 units have been approved, and 138 units have been built to date.

Development Name	Location	Total Approved Units	Unit Types				Total Built Units				Notes
			Single Family	Two-Family	Townhouse	Apartment	Single Family	Two-Family	Townhouse	Apartment	
Arbors of Blacksburg Renovation	Triangle Street	6	0	0	0	6	0	0	0	6	Studio Units only
Preserve at Walnut Springs	Price's Fork Road	593	268	32	209	84	7	0	18	0	
Westhill	Price's Fork Road	416	238	0	178	0	68	0	39	0	
Wilkshire	Pepper's Ferry Road	197	37	10	0	150	0	0	0	0	
Apogee Townhomes	Clay Street	34	0	0	34	0	0	0	0	0	
Harding Road Development	Harding Road	12	12	0	0	0	0	0	0	0	
Oak Forest Mobile Home Park Expansion	Hightop Road	20	20	0	0	0	-	-	-	-	Manufactured Homes
Total		1,278	575	42	421	240	75	0	57	6	

Source: Montgomery County Planning Department

Montgomery County Public Schools

SURVIVAL RATIOS

The chart below demonstrates the changes in enrollment as students move through the system. Percentages greater than 100 indicate that there are more students than there were in the previous grade the previous year. In other words, there was growth and new students were added to the system. Percentages less than 100 indicate that there was decline or students left the system.

Birth to Kindergarten: This ratio indicates the number of children born in the area who attend kindergarten in the Division 5 years later. Percentages less than 100% result from movement out of the Division, attendance at a non-public or charter school, or residence in another Division within the same area. Percentages greater than 100% represent people moving into the Division with children of Kindergarten age.

- ▶ Grades 8-9: The higher than usual percentage often is a result of school district promotion policies. Often in school districts, students are promoted from 8th to 9th grade and after one year in 9th grade do not have sufficient credits to be classified as 10th graders and are counted again as 9th graders the following year. There may also be students who attended private or charter schools or are home schooled through grade 8 and then attend public schools for high school education.

The following table illustrates the survival ratios for the Montgomery County Public Schools.

from	to	birth -> K	K->1	1->2	2->3	3->4	4->5	5->6	6->7	7->8	8->9	9->10	10->11	11->12
2014	2015	89.2%	97.2%	101.9%	97.2%	99.4%	97.3%	102.7%	99.3%	99.7%	107.4%	95.9%	96.7%	97.4%
2015	2016	80.5%	96.9%	97.1%	99.3%	101.0%	99.4%	104.5%	99.0%	99.6%	109.1%	94.9%	98.5%	95.3%
2016	2017	81.4%	102.6%	102.1%	98.6%	102.6%	100.1%	101.3%	100.1%	99.9%	107.9%	97.7%	99.3%	97.2%
2017	2018	83.7%	100.6%	100.1%	101.0%	102.1%	101.1%	99.4%	103.9%	98.8%	107.2%	99.9%	97.4%	97.5%
2018	2019	80.7%	104.3%	101.3%	101.5%	98.3%	102.1%	101.0%	102.9%	100.1%	109.5%	98.2%	98.5%	99.9%
2019	2020	79.1%	92.4%	93.7%	93.9%	95.2%	93.9%	96.6%	97.5%	99.8%	102.1%	97.9%	98.7%	96.9%
2020	2021	79.6%	104.2%	100.2%	98.9%	99.3%	100.4%	103.5%	102.1%	99.2%	107.8%	100.1%	98.7%	96.1%
2021	2022	76.7%	102.7%	103.0%	102.7%	101.6%	103.0%	102.7%	100.1%	100.1%	107.7%	96.3%	98.6%	95.1%
2022	2023	76.7%	101.1%	98.5%	101.5%	98.4%	100.6%	101.6%	102.0%	100.5%	105.7%	97.6%	94.8%	92.7%
	average	80.84%	100.225%	99.77%	99.4%	99.77%	99.8%	101.5%	100.8%	99.7%	107.158%	97.608%	97.923%	96.447%
	standard deviation	3.607%	3.749%	2.765%	2.563%	2.198%	2.569%	2.225%	1.946%	0.491%	2.079%	1.647%	1.335%	1.867%

Montgomery County Public Schools

ENROLLMENT PROJECTIONS

Following is the ten-year projected enrollment. Enrollment is projected to decrease by 471 students from the current 2023-24 enrollment to the 2033-34 projected enrollment, a decrease of approximately 5% percent.

Montgomery County Public Schools Projected Enrollment

Grade	2024-25	2025-26	2026-27	2027-28	2028-29	2029-30	2030-31	2031-32	2032-33	2033-34
Pre-K	211	211	211	211	211	211	211	211	211	211
K	632	575	552	579	604	604	604	604	604	604
1	660	658	600	576	602	630	630	630	630	630
2	655	679	675	614	590	619	646	646	646	646
3	695	670	697	692	632	605	634	662	662	662
4	738	702	678	703	699	636	612	641	668	668
5	696	764	725	703	729	723	658	634	663	693
6	737	711	777	737	707	723	699	638	612	641
7	795	753	727	794	752	723	737	716	652	626
8	758	804	762	734	804	761	732	745	722	659
9	809	816	865	820	791	864	819	789	801	778
10	748	793	798	848	803	776	847	802	771	784
11	777	735	780	786	836	790	766	833	789	760
12	768	743	705	747	752	799	757	733	798	756
Total	9,679	9,614	9,552	9,544	9,512	9,464	9,352	9,284	9,229	9,118

Source: FutureThink

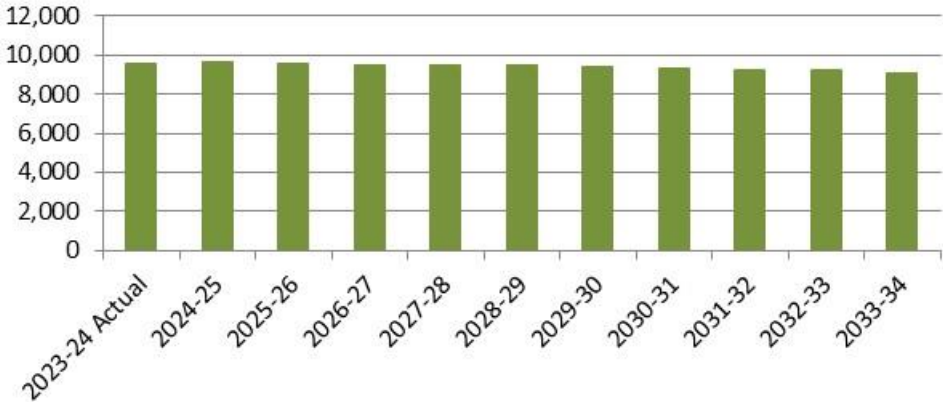
Montgomery County Public Schools Projected Enrollment by Grade Group

Grade	2024-25	2025-26	2026-27	2027-28	2028-29	2029-30	2030-31	2031-32	2032-33	2033-34
Pre-K	211	211	211	211	211	211	211	211	211	211
K - 5	4,076	4,048	3,927	3,867	3,856	3,817	3,784	3,817	3,873	3,903
6 - 8	2,290	2,268	2,266	2,265	2,263	2,207	2,168	2,099	1,986	1,926
9 - 12	3,102	3,087	3,148	3,201	3,182	3,229	3,189	3,157	3,159	3,078
Total	9,679	9,614	9,552	9,544	9,512	9,464	9,352	9,284	9,229	9,118

Source: FutureThink

Montgomery County Public Schools

Montgomery County Public Schools
Projected Enrollment



Montgomery County Public Schools

Historical & Projected Enrollment by School

The following tables illustrate the historical and projected enrollment of each school in the Division.

Auburn Elementary School

Historical Enrollment

Grade	2014-15	2015-16	2016-17	2017-18	2018-19	2019-20	2020-21	2021-22	2022-23	2023-24
Pre-K	18	23	17	18	18	18	18	20	18	33
K	77	94	80	85	89	80	80	79	79	80
1	95	81	93	81	94	93	85	82	83	81
2	96	96	79	98	88	90	92	91	88	84
3	74	99	95	81	99	87	96	95	92	89
4	81	77	96	103	84	101	98	94	97	93
5	85	97	82	99	100	83	99	90	101	101
Total	526	567	542	565	572	552	568	551	558	561

Source: Montgomery County Public Schools

Auburn Elementary School

Projected Enrollment

Grade	2024-25	2025-26	2026-27	2027-28	2028-29	2029-30	2030-31	2031-32	2032-33	2033-34
Pre-K	33	33	33	33	33	33	33	33	33	33
K	73	67	64	67	70	70	70	70	70	70
1	85	77	70	68	71	74	74	74	74	74
2	85	89	81	74	71	75	78	78	78	78
3	86	87	91	83	76	73	76	79	79	79
4	91	88	89	93	85	78	75	78	81	81
5	98	97	93	95	99	90	82	79	83	86
Total	551	538	521	513	505	493	488	491	498	501

Source: FutureThink

Montgomery County Public Schools

Belview Elementary School

Historical Enrollment

Grade	2014-15	2015-16	2016-17	2017-18	2018-19	2019-20	2020-21	2021-22	2022-23	2023-24
Pre-K	25	23	36	36	18	18	18	19	18	17
K	45	38	36	53	35	52	42	53	61	31
1	49	42	39	39	48	35	47	41	50	52
2	48	44	36	40	44	53	31	51	40	42
3	46	45	42	29	44	41	43	27	50	32
4	42	41	44	42	33	45	31	47	28	40
5	38	39	41	47	38	33	38	36	46	23
Total	293	272	274	286	260	277	250	274	293	237

Source: Montgomery County Public Schools

Belview Elementary School

Projected Enrollment

Grade	2024-25	2025-26	2026-27	2027-28	2028-29	2029-30	2030-31	2031-32	2032-33	2033-34
Pre-K	17	17	17	17	17	17	17	17	17	17
K	42	38	37	39	40	40	40	40	40	40
1	30	41	37	36	37	39	39	39	39	39
2	53	30	41	37	36	38	39	39	39	39
3	40	50	29	39	36	34	36	38	38	38
4	32	40	50	29	39	36	34	36	38	38
5	39	31	39	49	28	39	35	34	35	37
Total	253	247	250	246	233	243	240	243	246	248

Source: FutureThink

Christiansburg Primary School

Historical Enrollment

Grade	2014-15	2015-16	2016-17	2017-18	2018-19	2019-20	2020-21	2021-22	2022-23	2023-24
Pre-K	30	29	18	21	18	19	18	18	18	18
K	155	148	126	140	172	130	142	146	96	136
1	169	140	141	142	154	151	123	151	153	96
2	154	155	131	143	143	135	145	122	138	139
Total	508	472	416	446	487	435	428	437	405	389

Source: Montgomery County Public Schools

Christiansburg Primary School

Projected Enrollment

Grade	2024-25	2025-26	2026-27	2027-28	2028-29	2029-30	2030-31	2031-32	2032-33	2033-34
Pre-K	18	18	18	18	18	18	18	18	18	18
K	124	113	109	114	119	119	119	119	119	119
1	139	127	116	111	117	122	122	122	122	122
2	90	131	119	109	105	109	114	114	114	114
Total	371	389	362	352	359	368	373	373	373	373

Source: FutureThink

Montgomery County Public Schools

Christiansburg Elementary School

Historical Enrollment

Grade	2014-15	2015-16	2016-17	2017-18	2018-19	2019-20	2020-21	2021-22	2022-23	2023-24
3	123	136	149	139	139	128	121	145	125	152
4	133	119	140	155	151	117	122	118	154	117
5	135	120	121	139	170	143	116	126	128	150
Total	391	375	410	433	460	388	359	389	407	419

Source: Montgomery County Public Schools

Christiansburg Elementary School

Projected Enrollment

Grade	2024-25	2025-26	2026-27	2027-28	2028-29	2029-30	2030-31	2031-32	2032-33	2033-34
3	141	91	132	121	110	106	111	116	116	116
4	152	141	91	132	121	110	106	111	116	116
5	120	156	145	94	136	124	113	109	114	119
Total	413	388	368	347	367	340	330	336	346	351

Source: FutureThink

Eastern Montgomery Elementary School

Historical Enrollment

Grade	2014-15	2015-16	2016-17	2017-18	2018-19	2019-20	2020-21	2021-22	2022-23	2023-24
Pre-K	38	40	34	36	51	36	45	37	43	40
K	83	78	78	74	54	47	62	62	48	58
1	70	81	74	76	76	65	48	62	57	58
2	80	67	70	70	77	71	58	40	66	53
3	90	81	75	65	74	78	71	65	45	68
4	81	91	82	69	66	72	78	66	58	40
5	70	79	84	74	65	67	68	66	68	56
Total	512	517	497	464	463	436	430	398	385	373

Source: Montgomery County Public Schools

Eastern Montgomery Elementary School

Projected Enrollment

Grade	2024-25	2025-26	2026-27	2027-28	2028-29	2029-30	2030-31	2031-32	2032-33	2033-34
Pre-K	40	40	40	40	40	40	40	40	40	40
K	55	50	48	50	53	53	53	53	53	53
1	63	60	55	52	55	57	57	57	57	57
2	58	63	60	54	52	55	57	57	57	57
3	57	62	68	64	59	56	59	62	62	62
4	65	55	60	65	62	56	54	56	59	59
5	40	65	54	59	65	61	56	54	56	59
Total	378	395	385	384	386	378	376	379	384	387

Source: FutureThink

Montgomery County Public Schools

Falling Branch Elementary School

Historical Enrollment

Grade	2014-15	2015-16	2016-17	2017-18	2018-19	2019-20	2020-21	2021-22	2022-23	2023-24
Pre-K	23	25	18	18	36	36	36	38	37	36
K	66	91	77	79	89	103	86	84	73	98
1	78	63	83	83	84	113	97	87	82	69
2	101	83	72	82	79	103	104	94	95	84
3	72	97	86	68	86	91	98	91	100	94
4	76	71	97	88	65	95	84	91	91	97
5	87	72	63	102	83	80	92	76	98	91
Total	503	502	496	520	522	621	597	561	576	569

Source: Montgomery County Public Schools

Falling Branch Elementary School

Projected Enrollment

Grade	2024-25	2025-26	2026-27	2027-28	2028-29	2029-30	2030-31	2031-32	2032-33	2033-34
Pre-K	36	36	36	36	36	36	36	36	36	36
K	83	75	72	76	79	79	79	79	79	79
1	101	86	78	75	78	82	82	82	82	82
2	73	108	91	83	79	83	87	87	87	87
3	88	77	113	95	87	83	87	91	91	91
4	95	89	77	114	96	87	84	88	92	92
5	101	99	93	81	119	100	91	88	92	96
Total	577	570	560	560	574	550	546	551	559	563

Source: FutureThink

Gilbert Linkous Elementary School

Historical Enrollment

Grade	2014-15	2015-16	2016-17	2017-18	2018-19	2019-20	2020-21	2021-22	2022-23	2023-24
Pre-K	24	22	19	19	18	19	1	0	0	0
K	47	58	61	60	49	62	50	43	52	35
1	62	53	56	56	54	53	51	56	47	53
2	58	63	51	63	56	62	50	47	53	49
3	57	57	58	52	57	65	61	53	54	54
4	71	54	61	58	50	61	58	60	59	58
5	49	58	55	62	60	56	47	59	64	63
Total	368	365	361	370	344	378	318	318	329	312

Source: Montgomery County Public Schools

Gilbert Linkous Elementary School

Projected Enrollment

Grade	2024-25	2025-26	2026-27	2027-28	2028-29	2029-30	2030-31	2031-32	2032-33	2033-34
K	47	43	41	43	45	45	45	45	45	45
1	36	49	45	43	45	47	47	47	47	47
2	55	38	51	46	44	47	49	49	49	49
3	52	58	40	54	49	47	49	51	51	51
4	57	55	61	42	57	52	50	52	54	54
5	62	61	58	65	45	61	55	53	55	58
Total	309	304	296	293	285	299	295	297	301	304

Source: FutureThink

Montgomery County Public Schools

Harding Avenue Elementary School

Historical Enrollment

Grade	2014-15	2015-16	2016-17	2017-18	2018-19	2019-20	2020-21	2021-22	2022-23	2023-24
K	62	59	53	69	55	41	40	39	52	41
1	46	57	61	63	68	57	35	41	43	55
2	42	55	62	58	57	71	54	34	46	44
3	48	45	54	63	55	53	65	49	39	49
4	58	47	47	50	61	54	54	59	52	39
5	37	57	46	46	51	60	55	50	64	54
Total	300	327	323	349	347	336	303	272	296	282

Source: Montgomery County Public Schools

Harding Avenue Elementary School

Projected Enrollment

Grade	2024-25	2025-26	2026-27	2027-28	2028-29	2029-30	2030-31	2031-32	2032-33	2033-34
K	46	42	40	42	44	44	44	44	44	44
1	44	50	45	43	45	47	47	47	47	47
2	58	47	52	47	46	48	50	50	50	50
3	45	59	48	53	49	47	49	51	51	51
4	49	45	60	48	54	49	47	49	51	51
5	40	51	47	62	50	55	51	49	51	53
Total	282	294	292	295	288	290	288	290	294	296

Source: FutureThink

Kipps Elementary School

Historical Enrollment

Grade	2014-15	2015-16	2016-17	2017-18	2018-19	2019-20	2020-21	2021-22	2022-23	2023-24
Pre-K	4	5	0	0	12	0	0	0	0	0
K	66	79	64	75	53	56	70	43	56	51
1	58	73	76	56	71	57	56	73	50	61
2	72	62	73	68	55	72	57	53	75	59
3	51	68	53	69	79	61	67	60	57	79
4	59	60	69	61	69	82	55	86	61	58
5	53	66	63	71	64	71	72	58	70	62
Total	363	413	398	400	403	399	377	373	369	370

Source: Montgomery County Public Schools

Kipps Elementary School

Projected Enrollment

Grade	2024-25	2025-26	2026-27	2027-28	2028-29	2029-30	2030-31	2031-32	2032-33	2033-34
K	50	45	43	46	47	47	47	47	47	47
1	57	55	50	48	50	53	53	53	53	53
2	66	61	59	54	52	54	57	57	57	57
3	63	70	65	63	57	55	58	60	60	60
4	80	64	71	66	64	58	56	59	61	61
5	60	83	66	74	68	67	61	58	61	64
Total	376	378	354	351	338	334	332	334	339	342

Source: FutureThink

Montgomery County Public Schools

Margaret Beeks Elementary School

Historical Enrollment

Grade	2014-15	2015-16	2016-17	2017-18	2018-19	2019-20	2020-21	2021-22	2022-23	2023-24
Pre-K	22	27	17	18	18	18	17	19	18	16
K	79	72	68	72	58	78	53	55	44	37
1	51	71	73	64	68	62	59	55	55	41
2	78	51	68	79	65	71	57	57	62	52
3	73	82	61	68	76	69	62	57	50	59
4	79	66	81	65	69	75	62	62	54	54
5	71	73	71	78	64	68	72	64	60	56
Total	453	442	439	444	418	441	382	369	343	315

Source: Montgomery County Public Schools

Margaret Beeks Elementary School

Projected Enrollment

Grade	2024-25	2025-26	2026-27	2027-28	2028-29	2029-30	2030-31	2031-32	2032-33	2033-34
Pre-K	16	16	16	16	16	16	16	16	16	16
K	51	47	45	47	49	49	49	49	49	49
1	37	51	47	45	47	49	49	49	49	49
2	42	38	53	48	46	48	50	50	50	50
3	51	41	37	52	47	45	47	49	49	49
4	59	51	42	38	52	47	45	48	50	50
5	54	59	51	42	38	52	47	45	48	50
Total	310	303	291	288	295	306	303	306	311	313

Source: FutureThink

Prices Fork Elementary School

Historical Enrollment

Grade	2014-15	2015-16	2016-17	2017-18	2018-19	2019-20	2020-21	2021-22	2022-23	2023-24
Pre-K	43	41	36	36	36	36	45	51	50	51
K	73	65	74	75	72	71	48	66	67	66
1	53	71	62	76	70	71	64	53	68	69
2	85	69	69	73	73	69	61	77	59	72
3	61	81	67	67	73	75	64	59	72	57
4	51	65	82	68	68	67	70	60	58	77
5	47	50	61	82	72	70	63	90	66	60
Total	413	442	451	477	464	459	415	456	440	452

Source: Montgomery County Public Schools

Prices Fork Elementary School

Projected Enrollment

Grade	2024-25	2025-26	2026-27	2027-28	2028-29	2029-30	2030-31	2031-32	2032-33	2033-34
Pre-K	51	51	51	51	51	51	51	51	51	51
K	61	55	53	55	58	58	58	58	58	58
1	68	62	57	55	57	60	60	60	60	60
2	75	74	68	62	59	62	65	65	65	65
3	72	75	74	68	62	59	62	65	65	65
4	58	74	77	76	69	63	61	64	66	66
5	82	62	79	82	81	74	67	65	68	71
Total	467	453	459	449	437	427	424	428	433	436

Source: FutureThink

Montgomery County Public Schools

Auburn Middle School Historical Enrollment

Grade	2014-15	2015-16	2016-17	2017-18	2018-19	2019-20	2020-21	2021-22	2022-23	2023-24
6	98	86	90	87	99	105	83	103	99	105
7	94	104	92	90	94	106	103	83	99	100
8	88	92	110	93	86	97	100	102	89	103
Total	280	282	292	270	279	308	286	288	287	308

Source: Montgomery County Public Schools

Auburn Middle School Projected Enrollment

Grade	2024-25	2025-26	2026-27	2027-28	2028-29	2029-30	2030-31	2031-32	2032-33	2033-34
6	108	105	103	100	101	106	96	88	84	88
7	107	110	107	105	101	103	107	98	90	86
8	103	110	113	110	108	104	106	110	101	92
Total	318	325	323	315	310	313	309	296	275	266

Source: FutureThink

Blacksburg Middle School Historical Enrollment

Grade	2014-15	2015-16	2016-17	2017-18	2018-19	2019-20	2020-21	2021-22	2022-23	2023-24
6	285	271	325	307	324	310	296	320	307	340
7	259	287	271	330	312	335	292	305	332	318
8	296	258	293	267	325	314	329	302	316	337
Total	840	816	889	904	961	959	917	927	955	995

Source: Montgomery County Public Schools

Blacksburg Middle School Projected Enrollment

Grade	2024-25	2025-26	2026-27	2027-28	2028-29	2029-30	2030-31	2031-32	2032-33	2033-34
6	299	296	316	296	314	268	288	263	252	264
7	353	310	307	327	307	325	278	299	272	261
8	326	362	318	314	336	315	334	285	306	279
Total	978	968	941	937	957	908	900	847	830	804

Source: FutureThink



Montgomery County Public Schools

Christiansburg Middle School

Historical Enrollment

Grade	2014-15	2015-16	2016-17	2017-18	2018-19	2019-20	2020-21	2021-22	2022-23	2023-24
6	294	259	246	222	306	291	254	250	259	264
7	220	285	249	245	234	306	273	268	241	260
8	275	220	277	258	247	235	302	275	254	239
Total	789	764	772	725	787	832	829	793	754	763

Source: Montgomery County Public Schools

Christiansburg Middle School

Projected Enrollment

Grade	2024-25	2025-26	2026-27	2027-28	2028-29	2029-30	2030-31	2031-32	2032-33	2033-34
6	272	268	291	284	230	282	251	229	220	230
7	265	273	270	293	286	231	283	253	230	221
8	259	264	272	268	292	285	230	282	251	229
Total	796	805	833	845	808	798	764	764	701	680

Source: FutureThink

Shawsville Middle School

Historical Enrollment

Grade	2014-15	2015-16	2016-17	2017-18	2018-19	2019-20	2020-21	2021-22	2022-23	2023-24
6	69	74	82	80	66	69	73	74	69	68
7	75	65	71	79	83	71	88	65	76	71
8	85	76	58	64	77	78	85	71	63	73
Total	229	215	211	223	226	218	246	210	208	212

Source: Montgomery County Public Schools

Shawsville Middle School

Projected Enrollment

Grade	2024-25	2025-26	2026-27	2027-28	2028-29	2029-30	2030-31	2031-32	2032-33	2033-34
6	58	42	67	57	62	67	64	58	56	59
7	70	60	43	69	58	64	69	66	60	58
8	70	68	59	42	68	57	62	68	64	59
Total	198	170	169	168	188	188	195	192	180	176

Source: FutureThink

Montgomery County Public Schools

Auburn High School Historical Enrollment

Grade	2014-15	2015-16	2016-17	2017-18	2018-19	2019-20	2020-21	2021-22	2022-23	2023-24
9	126	108	100	113	99	97	95	109	111	88
10	99	119	104	101	120	93	88	89	101	112
11	95	100	113	104	88	115	94	86	90	101
12	80	90	93	110	107	90	109	89	81	89
Total	400	417	410	428	414	395	386	373	383	390

Source: Montgomery County Public Schools

Auburn High School Projected Enrollment

Grade	2024-25	2025-26	2026-27	2027-28	2028-29	2029-30	2030-31	2031-32	2032-33	2033-34
9	109	109	116	119	116	114	110	112	117	107
10	85	105	104	111	115	112	110	106	107	112
11	113	85	105	105	112	115	113	110	106	108
12	97	108	82	101	101	107	111	108	106	102
Total	404	407	407	436	444	448	444	436	436	429

Source: FutureThink

Blacksburg High School Historical Enrollment

Grade	2014-15	2015-16	2016-17	2017-18	2018-19	2019-20	2020-21	2021-22	2022-23	2023-24
9	297	315	300	325	292	368	317	369	337	339
10	282	293	299	294	325	286	357	318	347	333
11	307	289	294	302	285	335	280	354	318	335
12	262	302	281	290	305	294	313	279	338	307
Total	1,148	1,199	1,174	1,211	1,207	1,283	1,267	1,320	1,340	1,314

Source: Montgomery County Public Schools

Blacksburg High School Projected Enrollment

Grade	2024-25	2025-26	2026-27	2027-28	2028-29	2029-30	2030-31	2031-32	2032-33	2033-34
9	371	359	398	350	346	370	347	368	314	337
10	333	364	352	391	343	340	363	340	361	308
11	332	331	363	351	390	342	339	362	339	359
12	323	320	320	350	339	376	330	327	349	327
Total	1,359	1,374	1,433	1,442	1,418	1,428	1,379	1,397	1,363	1,331

Source: FutureThink

Montgomery County Public Schools

Christiansburg High School

Historical Enrollment

Grade	2014-15	2015-16	2016-17	2017-18	2018-19	2019-20	2020-21	2021-22	2022-23	2023-24
9	309	287	228	286	271	259	237	323	293	272
10	274	289	274	225	281	273	255	246	323	278
11	260	248	288	278	230	270	255	273	242	301
12	247	258	234	273	259	217	262	252	262	217
Total	1,090	1,082	1,024	1,062	1,041	1,019	1,009	1,094	1,120	1,068

Source: Montgomery County Public Schools

Christiansburg High School

Projected Enrollment

Grade	2024-25	2025-26	2026-27	2027-28	2028-29	2029-30	2030-31	2031-32	2032-33	2033-34
9	255	277	282	291	287	311	304	246	301	269
10	268	252	273	278	287	283	307	300	242	297
11	272	262	246	267	272	280	276	300	293	237
12	286	258	249	234	253	258	266	262	285	278
Total	1,081	1,049	1,050	1,070	1,099	1,132	1,153	1,108	1,121	1,081

Source: FutureThink

Eastern Montgomery High School

Historical Enrollment

Grade	2014-15	2015-16	2016-17	2017-18	2018-19	2019-20	2020-21	2021-22	2022-23	2023-24
9	88	89	77	72	69	81	90	79	67	64
10	68	85	81	69	69	66	88	87	76	66
11	75	62	79	69	68	63	80	65	80	66
12	66	68	58	79	63	69	75	61	59	64
Total	297	304	295	289	269	279	333	292	282	260

Source: Montgomery County Public Schools

Eastern Montgomery High School

Projected Enrollment

Grade	2024-25	2025-26	2026-27	2027-28	2028-29	2029-30	2030-31	2031-32	2032-33	2033-34
9	74	71	69	60	42	69	58	63	69	65
10	62	72	69	68	58	41	67	56	61	67
11	60	57	66	63	62	53	38	61	51	56
12	62	57	54	62	59	58	50	36	58	49
Total	258	257	258	253	221	221	213	216	239	237

Source: FutureThink

Montgomery County Public Schools

CONCLUSION

The enrollment projections presented in this report were developed using the cohort-survival methodology while incorporating housing and geographic information system data.

As with any projection, the Division should pay close attention to live birth counts, enrollment in elementary schools, and housing starts. Each of these factors will have an impact on future student enrollment.

FutureThink is pleased to have had the opportunity to provide the Division with enrollment projection services. We hope this document will provide the necessary information to make informed decisions about the future of the Montgomery County Public Schools.

