

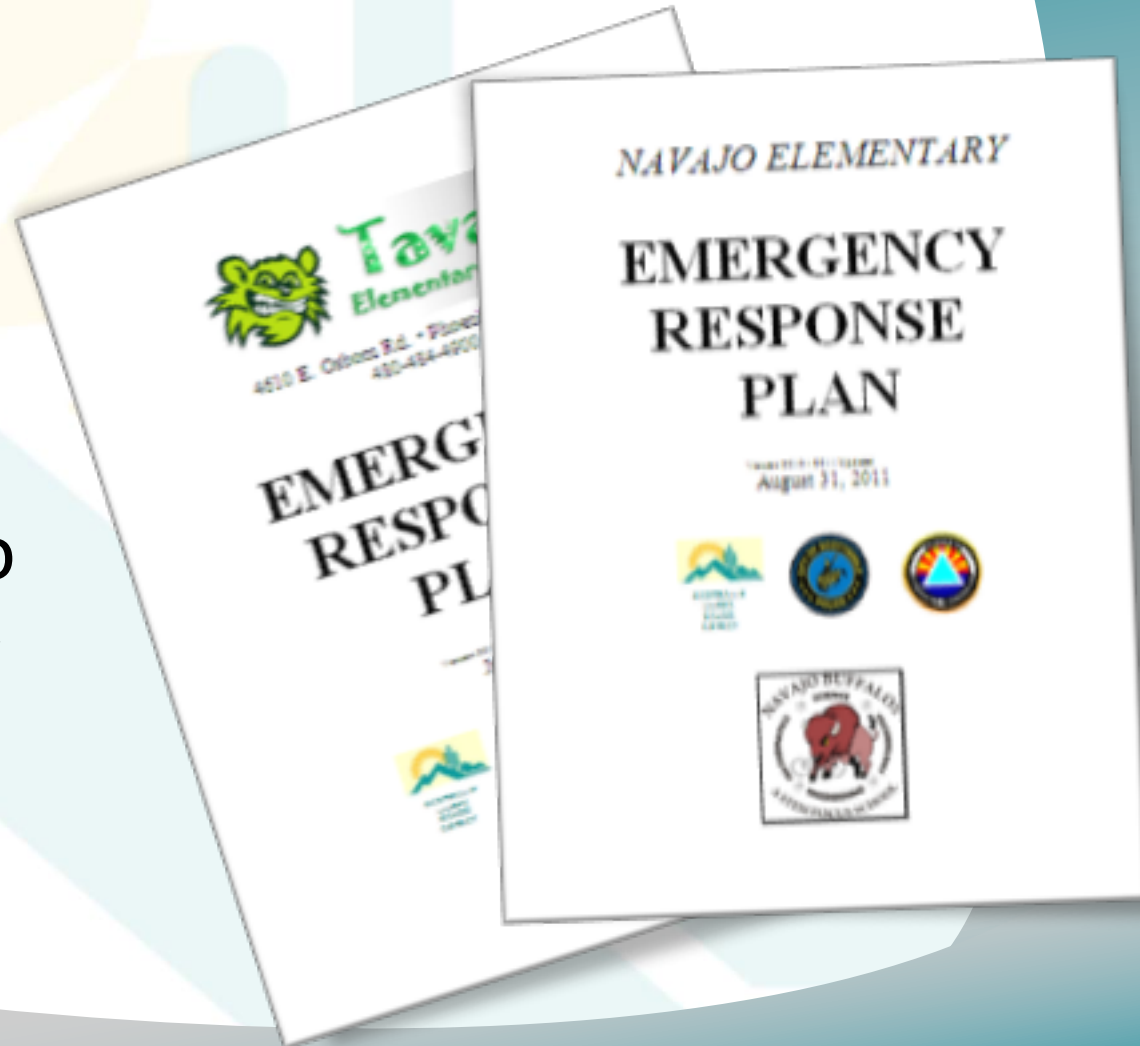


# School Safety Procedures

April 17, 2018

# Safety Procedures

The purpose of this presentation is to provide an overview of the actions we take to ensure the safety of our schools



# Safety Procedures

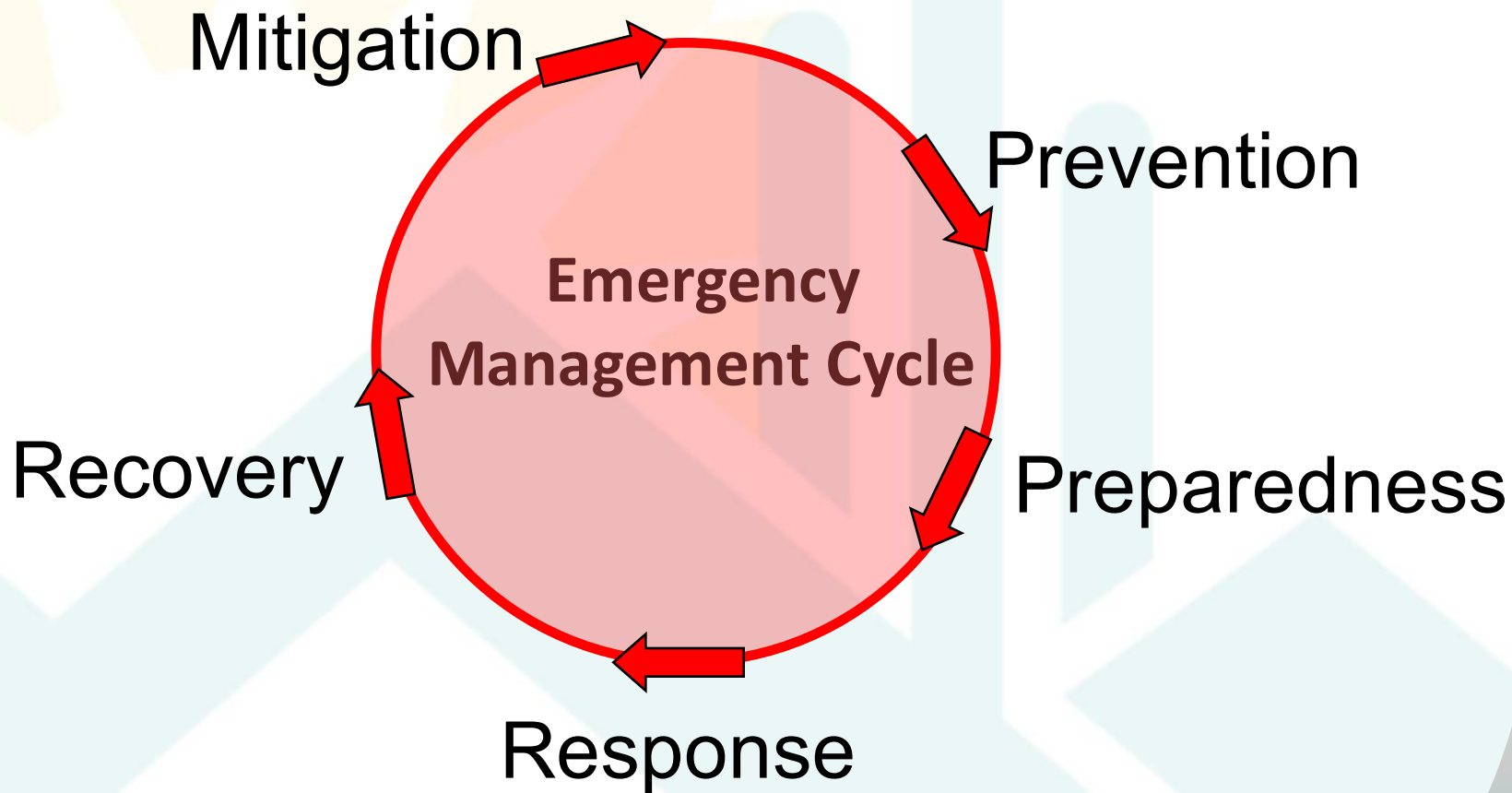


Developed in partnership with local, state, and federal agencies

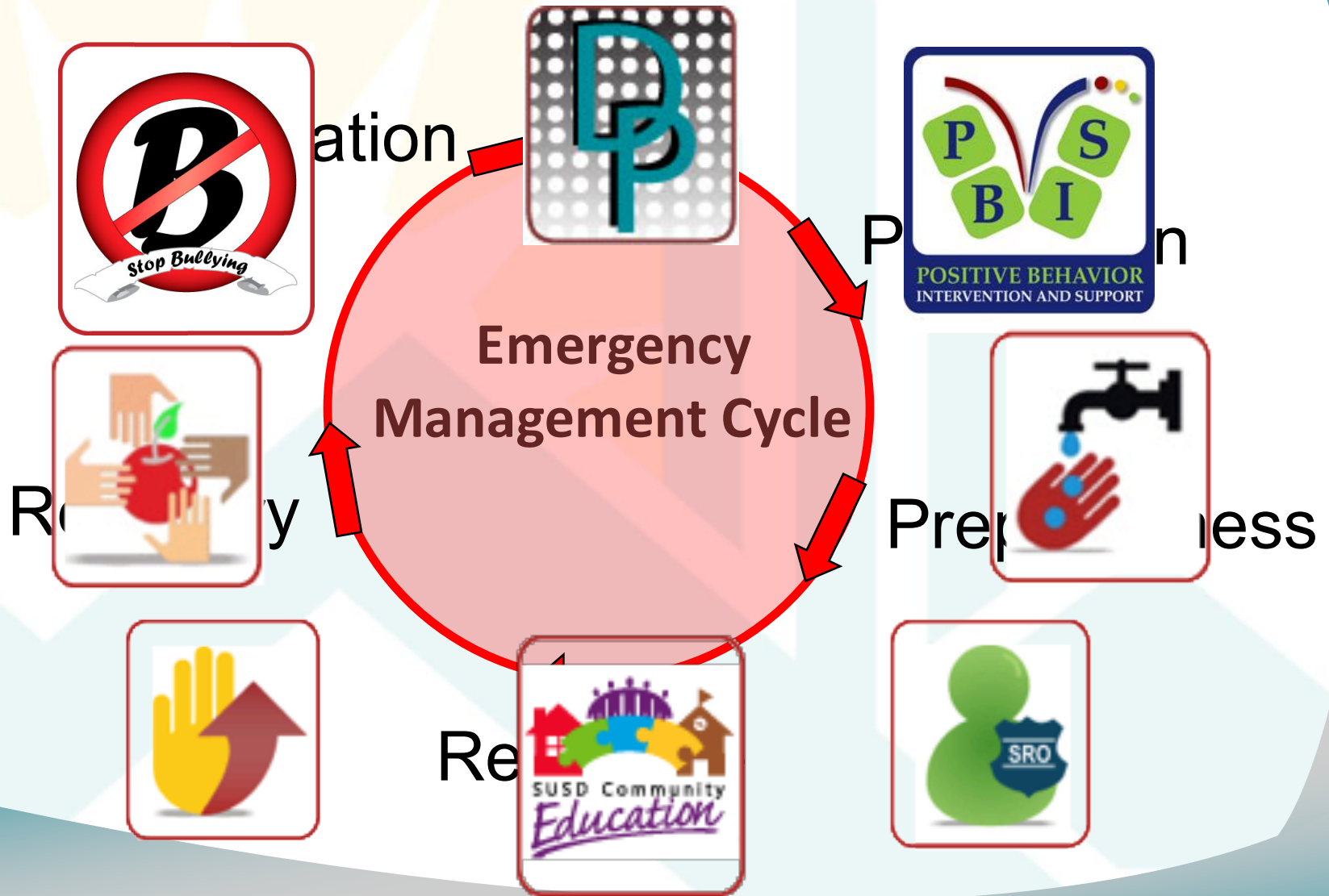




# FEMA



# An Integrated Approach to School Safety



# An Integrated Approach to School Safety

## School Resource Officer Program

Law Enforcement

Teacher

Counselor

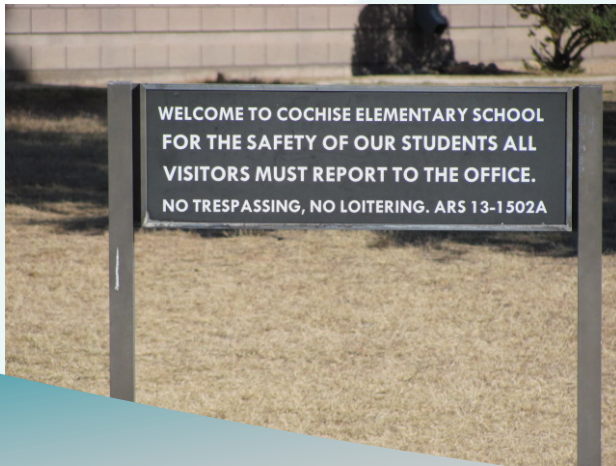
Role Model



# An Integrated Approach to School Safety

## Physical Infrastructure

- Fencing, gates, access control, signage, building design, alarms, cameras, etc.



# An Integrated Approach to School Safety

## Physical Infrastructure Upgrades

- Upgraded front offices – remodel to secure the entry points
- Upgraded emergency messaging system for campuses. Instant lockdown messaging with the push of a button.
- Updating classroom locking hardware for those that don't lock from the inside
- Upgraded camera surveillance systems





# Emergency Response Plans

Written document that outlines emergency procedures, the chain of command, communication process, etc.

**It is the process, not the plan, that makes us prepared.**

*NAVAJO ELEMENTARY*

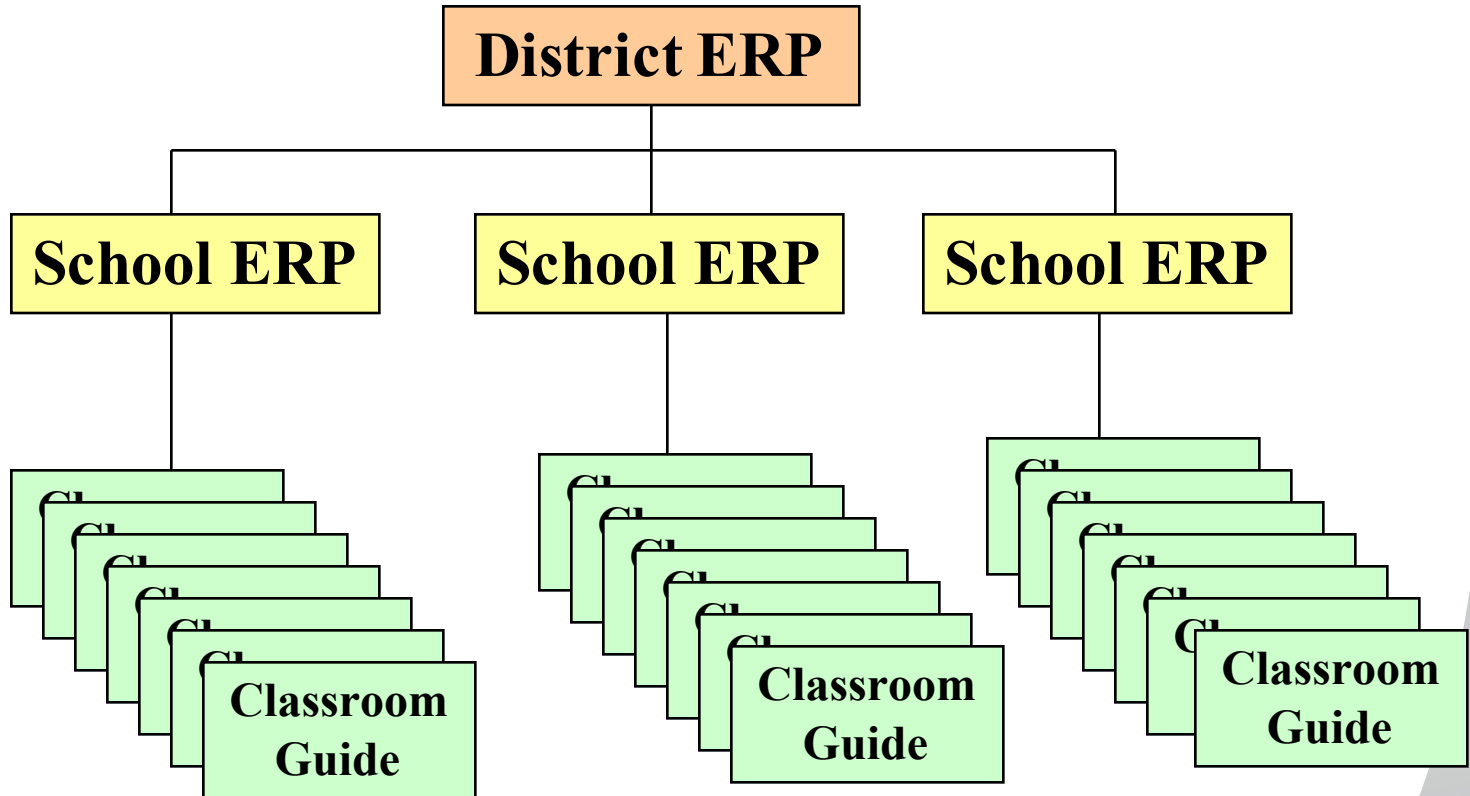
## EMERGENCY RESPONSE PLAN

Revised 8/31/11  
August 31, 2011





# Emergency Response Plan Overview



# Emergency Response Plans



Our plans meet or  
exceed AZ  
Department of  
Education's minimum  
requirements

Represent best  
practice



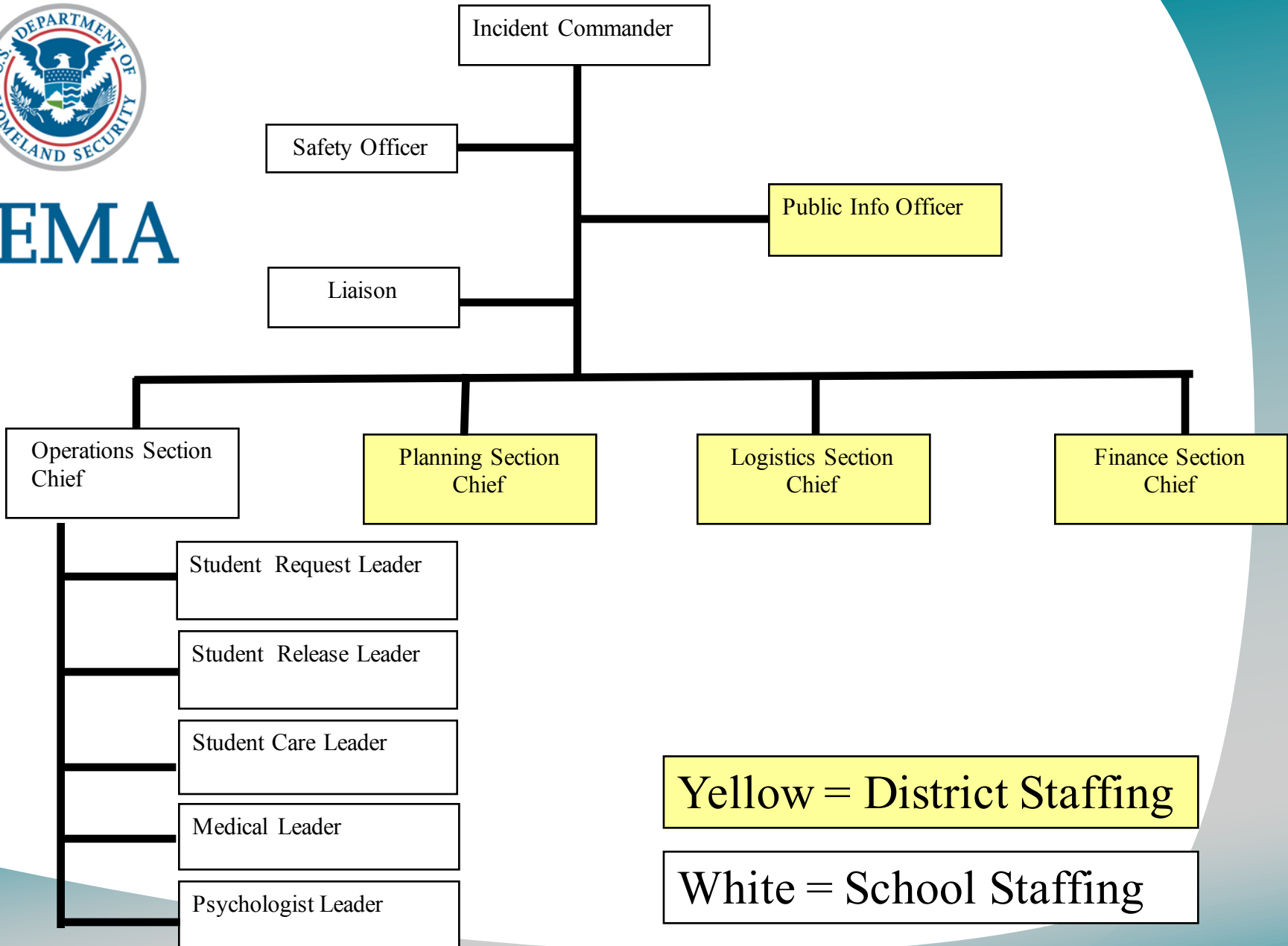


# Organize & Equip

- Safety is everybody's job, but...
- Select members of:
  - Security Department
  - Communication Department
  - Student Information Management teams
  - District, site, and parent safety committees
  - Incident Command Teams



FEMA



Yellow = District Staffing

White = School Staffing

# Security Department

	Arcadia	Chaparral	Coronado	Desert Mountain	Saguaro	Middle K8	Float
13/14	5	6	5	6	5	7	1
14/15	4	5	4	5	4	7	1
15/16	4	5	4	5	4	7	0
16/17	4	5	4	5	4	7	0
17/18*	3	4	3	4	3	7	3
17/18 revised	4	4	3	4	3	8**	1

\*Decrease in number of security guards; increase to hourly rate

\*\*Addition to Cheyenne Traditional School





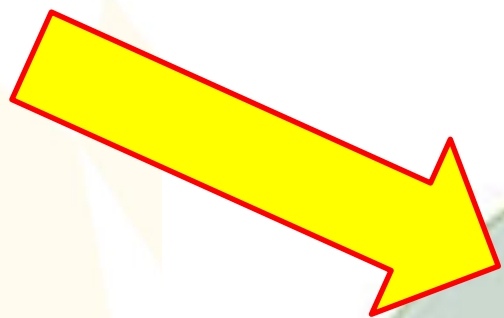
# Training

- Every employee – basic emergency procedures
  - In-person training at the start of each year
  - On-line Moodle course each year
- Incident Command System
  - FEMA Independent Study courses
  - Site specific training
- Parent/student reunification procedures
- Security in-service training



# Exercise

- At a minimum, every school must conduct:
  - Evacuation drills once a month
  - Three lockdown drills per year
  - Two shelter-in-place drills per year
- In addition, we also do:
  - Tabletop exercises for administrators
  - Reunification exercises for SIMAR team



# Evaluate / Improve

- Debrief of exercises
- Incorporate lessons learned into plans
- Quarterly meetings with ERP Consortium to share best practices
- Member of Arizona Department of Education Safety Advisory Council

# What Are We Doing Now?

- Bond funding:
  - Securing front offices – remodels
  - Installing emergency communication systems
  - Upgrading older school's locking hardware
- ERP and operational review
  - Things we can change now
  - Things we can change with existing funds
  - Things we need to budget for

# Safe Schools Study

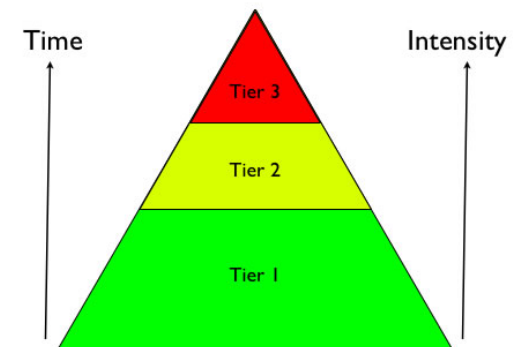
Based on the findings from the Safe Schools Initiative it is recommended that:

- Schools ensure a climate in which students feel comfortable sharing information with a responsible adult
- Recognize that student's with positive emotional connection to school are more willing to share information
- Creating a climate of mutual respect encourages communication
- Students need to know that reporting information about potential threats will not have a negative consequence
- Students need to feel listened to in a non-judgmental manner



# Three Tiered Model: Mental Health

- Tier I: Applies to all students  
Universal Behavioral Expectations  
School Connectedness/Positive Relationships
- Tier II: (about 15%) of students  
Small group intervention
- Tier III: Severe Mental Health Symptoms  
Community Based Referrals –SUSD has established partnerships with community agencies and providers to address Tier III needs



# Training Topics-Safety Related

In addition to Emergency Response Plan (ERP) training, we conduct:

- Drug/Alcohol Awareness
- Mental Health Protocols
- Risk Assessment Protocols
- Threat Assessment Protocols
- Trauma Informed Practices
- Suicide Prevention Training

# Targeted Audiences

- Security Specialists
- Counselors
- Social Workers
- School Psychologists
- Nurses
- Principals and Assistant Principals
- Teacher(s)
- Community Specialists

# Next Steps

- Continuous review of ERP's
- Re-evaluation of current security staffing
- Consider reduction in counselor ratio
- Consider increase in School Psychologists-define roles and responsibilities to include “expanded role”
- Comprehensive review of training topics and expansion of Mental Health First Aide in our schools



# Questions