



Accelerated Middle School Program

Proposal

April 12, 2018

Dr. Steve Nance, Assistant Superintendent

Dr. Cecilia Johnson, Assistant Superintendent

Mr. Chris Gilmore, Principal, Coronado High School



Accelerated Middle School – Student Eligibility

- Must have earned “Highly Performing” on prior year’s AzMERIT Math and ELA assessments
- Attends parent/student informational meeting
- Complete Accelerated Middle School application
- Scores at a level in mathematics indicating readiness for pre-algebra math curriculum in 6th grade



Initial Screening

- September: Use 4th Grade AZMerit Spring 2018 (HP in 2 areas: ELA & Math)

Invitation Letters

- November: Invitation to Parent Informational Night

Information Nights

December: CHS Auditorium
Acceptance Process
Test Enrollment Procedure online

Enrollment Testing

- SUSD Entrance Testing: Skills Based: ELA, Math, Writing
- January/February: Dates and Times TBD

Determine Cut Scores

- February: Assessment Department determines Cut Scores

Acceptance Letters

- Pool of students from HP & SUSD Assessment
- Email Letters
- Must Enroll at CHS by <date>

Registration

- First Come, First Served Registration at CHS
- Registrar has list from Gifted Services Data Base
- Waitlists

Welcome Mixer

- Social to meet teachers, staff and review class schedules, procedures for arrival, lunch, pick-up. Tour campus



Projected Course Sequence

Grade	Mathematics Course Sequence
6	8 th Grade Mathematics (equivalent of pre-algebra)
7	Honors Algebra I
8	Honors Geometry (available for HS credit)
9	Honors Algebra II

Grade	ELA Course Sequence
6	Accelerated 6 th Grade English
7	Accelerated 7 th Grade English
8	Accelerated 8 th Grade English
9	Honors English 9



Projected Course Sequence

Grade	Science Course Sequence
6	Accelerated Science (3 MS Semesters – all 6 th , 1 semester 7 th)
7	Accelerated Science (3 MS Semesters – 1 semester 7 th , all 8 th)
8	Honors Biology (HS Credit)
9	Honors Chemistry

Grade	Social Studies Course Sequence
6	Accelerated 6 th Grade Social Studies (World History Focus)
7	Accelerated 7 th Grade Social Studies (US History to WWII Focus)
8	Accelerated 8 th Grade Social Studies (US History post WWII Focus)
9	AP Human Geography



Projected Course Sequence

Grade	World Language
6	Spanish I (first half – A/B Schedule)
7	Spanish I (second half – A/B Schedule)
8	Spanish II (daily – HS credit)
9	Honors Spanish III (available for dual enrollment credit)

Grade	Technology
6	Creation Studio I (A/B Schedule) <i>Tech Skills, Coding, App Design, Robotics, Engineering, Building a Computer</i>
7	Creation Studio II (A/B Schedule) <i>Tech Skills, Coding, App Design, Robotics, Engineering, Building a Computer</i>
8	Availability of High School Courses
9	As per High School Course Guide



Grade	Physical Education
6	6 th Grade PE (A/B Schedule)
7	7 th Grade PE (A/B Schedule)
8	8 th Grade PE (A/B Schedule)
9	As per High School Course Guide

Grade	Fine Arts
6	Instrumental Music (band and strings combined; could split and add choir with larger enrollment – A/B Schedule)
7	Instrumental Music (band and strings combined; could split and add choir with larger enrollment – A/B Schedule)
8	Instrumental Music (band and strings combined; could split and add choir with larger enrollment – A/B Schedule)
9	As per High School Course Guide



Comparison of Bell Schedules

Coronado HS Schedule

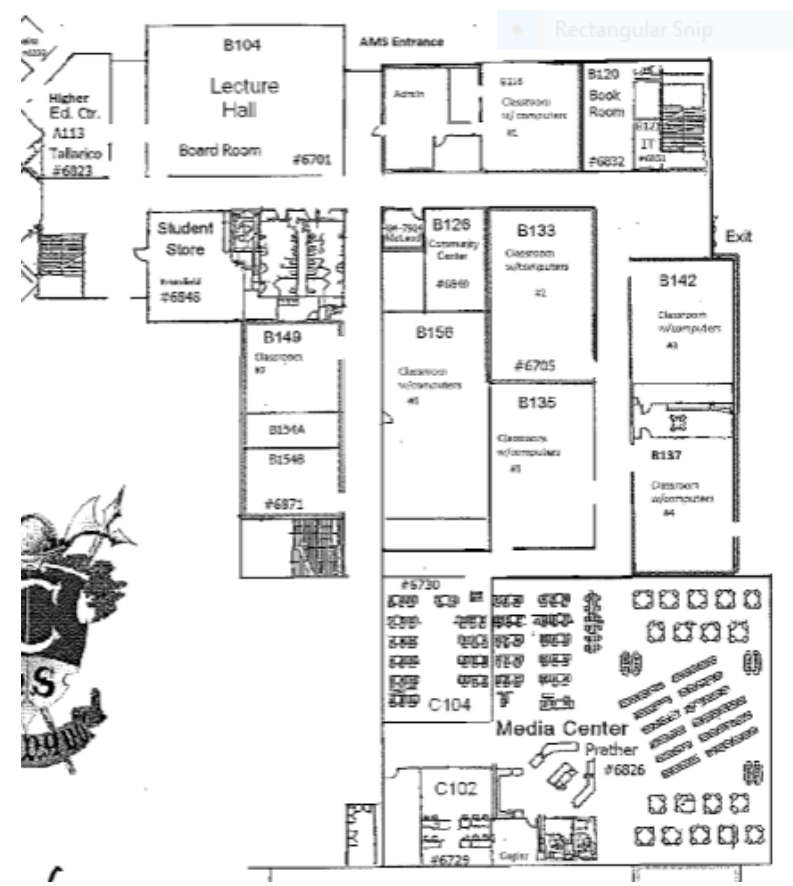
- **Period 1** 7:45- 8:41 (56 min)
- **Period 2** 8:45-9:41 (56 min)
- **Period 3** 9:45-10:41 (56 min)
- **Period 4** 10:45-11:41 (56 min)
- **Lunch/Don Time** 11:41 – 12:37 (56 min)
- **Period 5** 12:37 – 1:33 (56 min)
- **Period 6** 1:37 – 2:33 (56 min)
- **Period 7** 2:37 – 3:33 (56 min)

Sample AMS Schedule

- **Period 1** 7:45 – 8:37 (52 min) MA
- **Period 2** 8:41 – 9:33 (52 min) ELA/SS
- **Period 3** 9:37 – 10:29 (52 min) SC
- **Lunch** 10:29 – 11:08 (39 min)
- **Period 4** 11:08 – 12:00 (52 min) WL
- **Period 5** 12:04 – 12:56 (52 min) Band/PE
- **Period 6** 1:00 – 1:52 (52 min) SS/ELA
- **Period 7** 1:56 – 2:48 (52 min) Wheel



Proposed Location





Safety and Security

- Separate drop-off and pick up
- New entrance remodeled for secure entry
- Classrooms and restrooms all on one floor in one area
- Separate entrance to library
- Stairs off limits
- Assistant Principal and admin asst. will be located in that area – admin asst. functions as receptionist



Budget Impact

- Reallocation of teaching positions
- HS teachers to teach most content
- One lead teacher (1.0 FTE) – Deseg funds
- Security – Coronado HS staff already in place
- Admin - Coronado HS Asst. principal and admin asst. already in place
- Minor remodel of entrance for security
- 1:1 chromebooks



Transportation

- Pickup and drop-off in each learning community
 - Continue through 9 – 12



Proposed Dress Code

- Uniforms
 - Polo shirts, khaki bottoms – pants, shorts, skirts
 - Rationale
 - Culture – sense of belonging and pride
 - Security – identify AMS students
 - Collective efficacy
 - Spirit days with Coronado Dons shirt and jeans