

# Scottsdale Unified School District

## Demographic and Enrollment Analysis

Governing Board Presentation

October 4, 2018

Presented by:



APPLIED ECONOMICS

# Study Scope

## Enrollment Trends

- Grade and level characteristics
- Geographic distribution
- Alternative providers

## Demographic Characteristics

- Population characteristics
- Household type and age structure
- Housing supply and occupancy rates

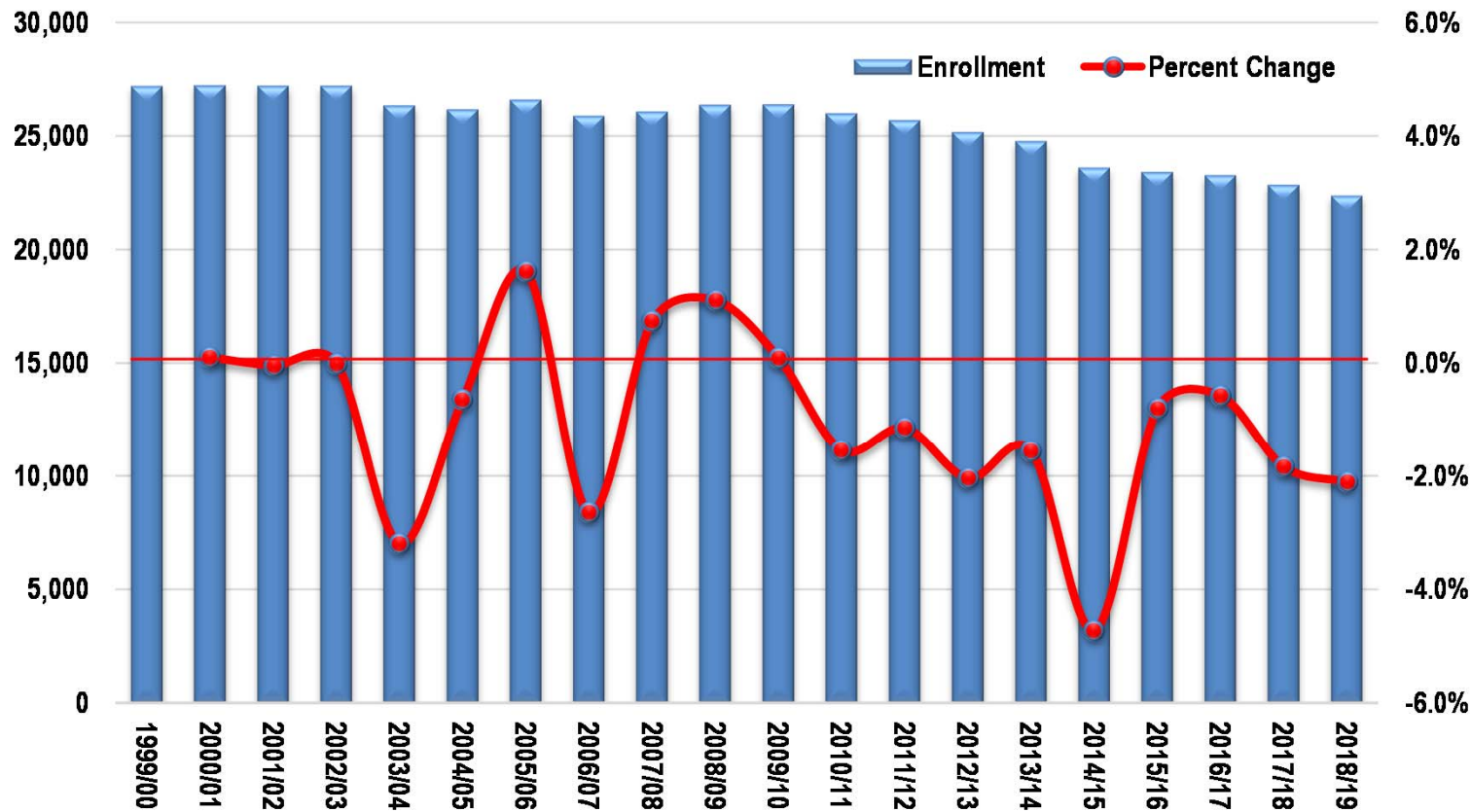
## Residential Development Impacts

- Current development activity
- Housing market conditions
- Future development potential

## Enrollment Projections

- District
- SUSD Community
- Planning Grid

# 40<sup>th</sup> Day Headcount Enrollment

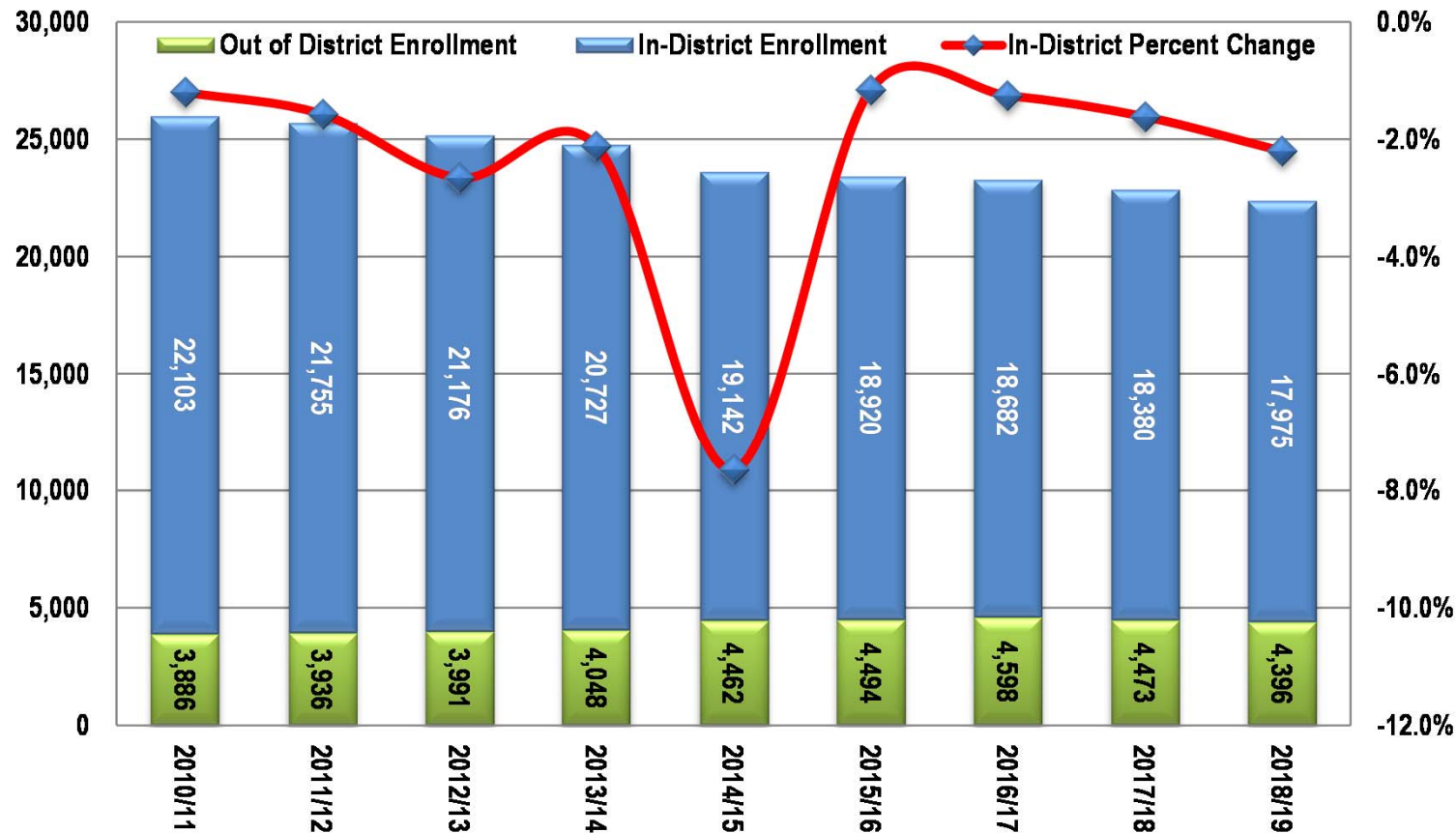


Sources: Arizona Department of Education; Scottsdale Unified School District.

K-12 enrollment has declined by over 4,800 students (17.8%) since peaking in 2001/02 - losses in 13 of the 17 years since the peak included a sharp decline in 2014/15, when budget issues caused program changes

Enrollment in charter schools within (or very near) District boundaries has increased by 5,200 students since 2010/11, while District enrollment has declined by 4,000 students

# 40<sup>th</sup> Day Headcount Enrollment



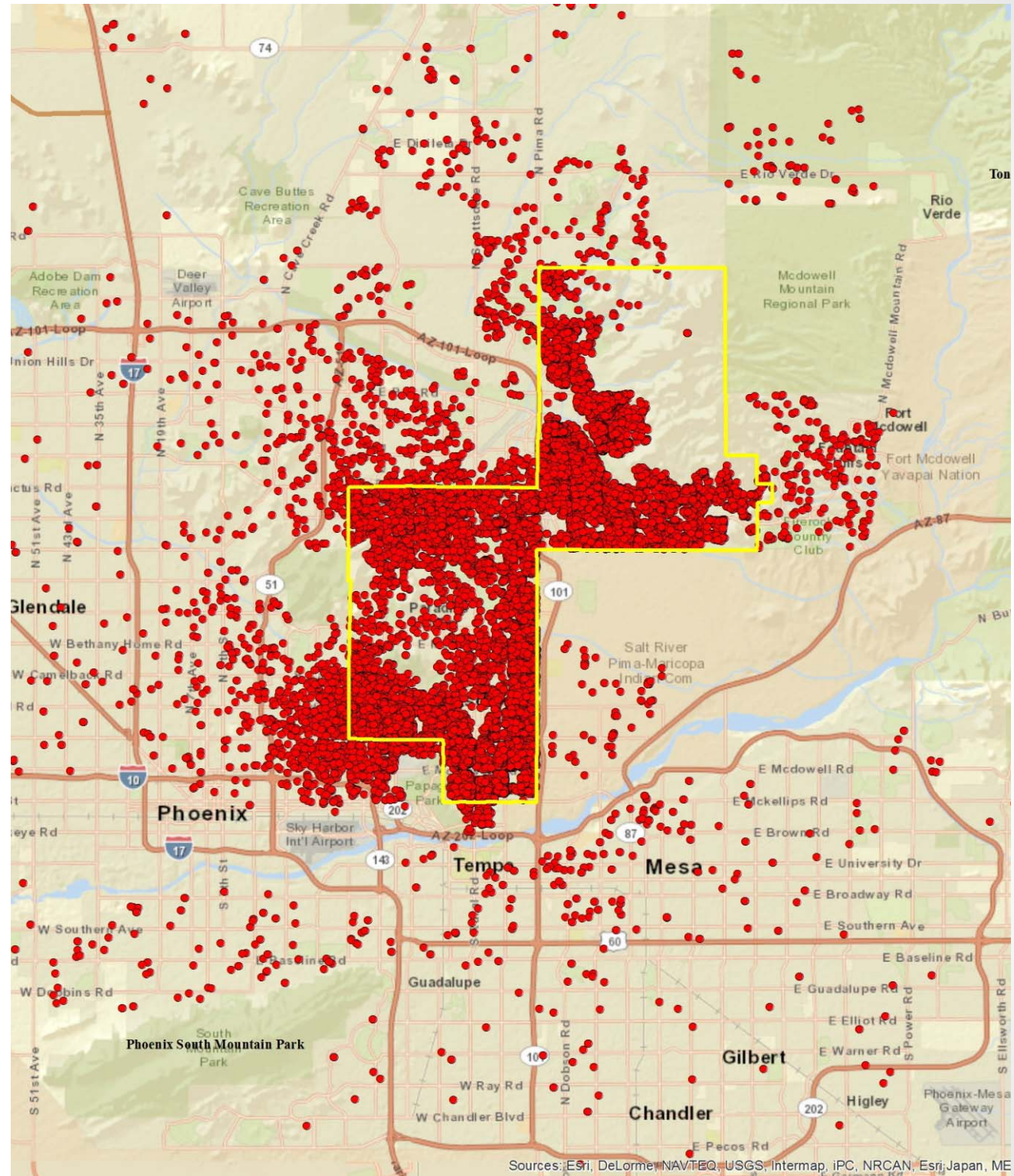
Source: Scottsdale Unified School District.

Since 2010/11 in-District enrollment has declined by about 4,500 students, while out-of-District enrollment has increased by about 500 students



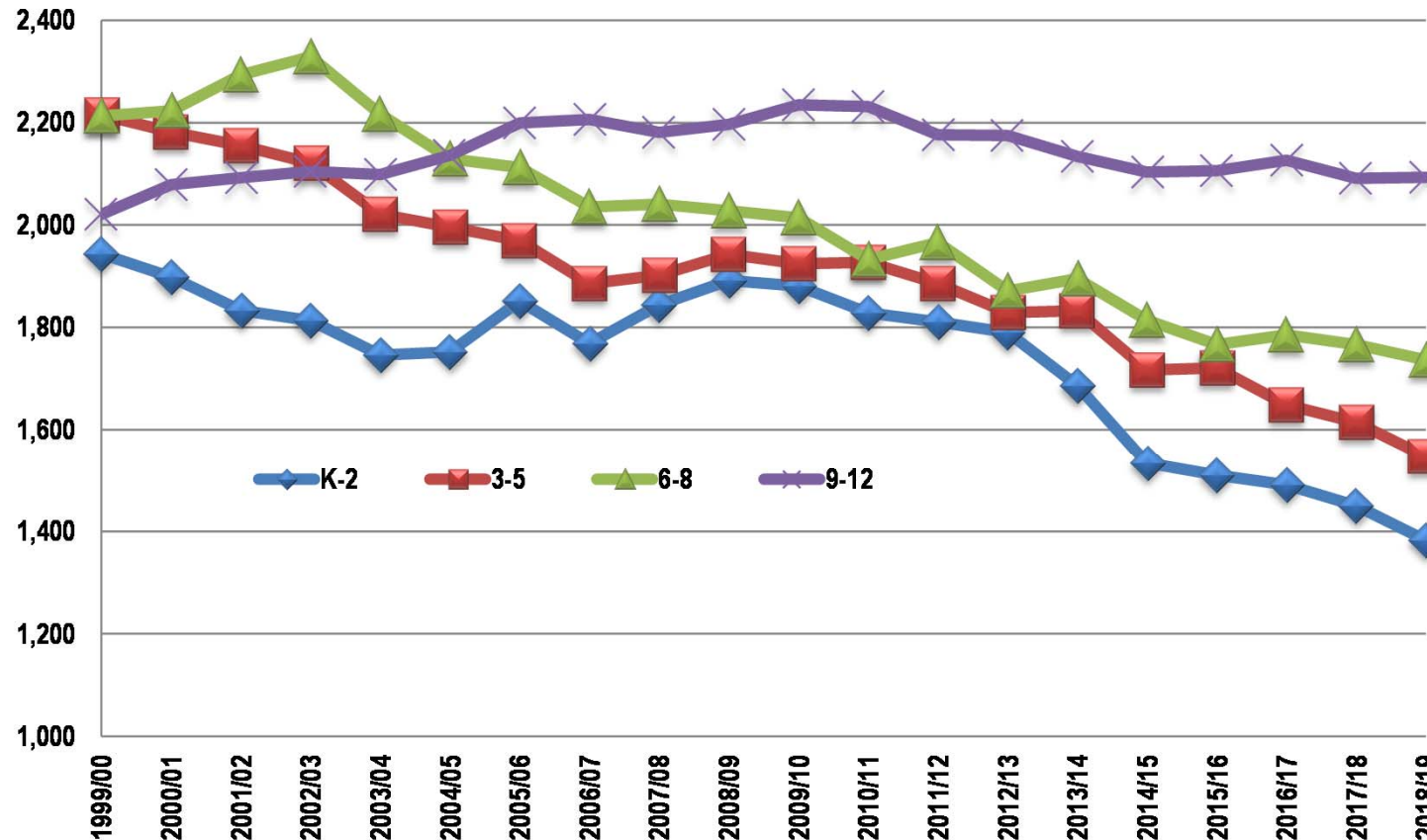
# Student Location

Out-of-District students are drawn from a very large area, which increases the difficulty of projecting future enrollment levels



# 40<sup>th</sup> Day Enrollment Cohorts

## Average Enrollment Per Grade



Sources: Arizona Department of Education; Scottsdale Unified School District.

The pattern of the sizes of the grade cohorts is consistent with a mature district in a move-up housing market – in which the upper grades are significantly larger

The declines in the K-2 and the 3-5 grade cohorts are fueled by the low birth rates that resulted from the great recession - this will continue to impact enrollment levels for some time to come

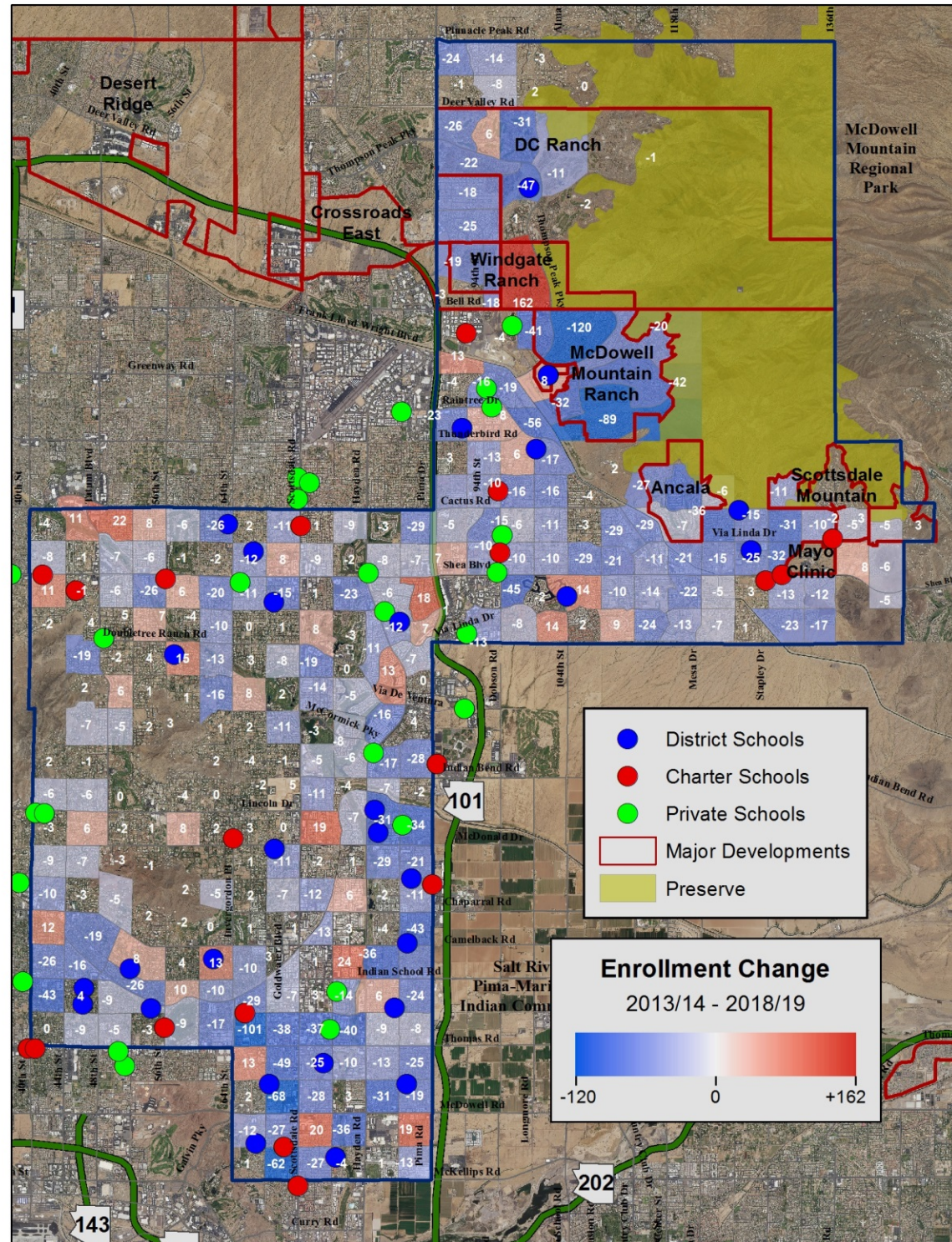


# Enrollment Change

2013/14 – 2018/19

Nearly the entire District has experienced some amount of enrollment decline over the past five years

Interspersed enrollment increases are evident in some of the more established areas - a sign that some families are returning



# Demographic Trends

	2000 Census	2010 Census	2018 Estimate	Annual Change*	
				2000-10	2010-18
<b>Population</b>	220,068	220,818	238,367	0.03%	1.0%
Under 5	20.1%	18.4%	17.3%	-1.31%	0.7%
5 to 13	10.5%	9.4%	8.9%	-1.08%	0.3%
14 to 17	4.6%	4.7%	4.2%	0.25%	-0.4%
18 to 24	6.9%	7.4%	7.2%	0.78%	0.6%
25 to 44	30.5%	25.6%	25.9%	-1.71%	1.1%
45 to 64	25.7%	29.7%	29.5%	1.48%	0.9%
65 and up	16.8%	18.9%	20.1%	1.20%	1.8%
<b>Housing Units</b>	110,533	121,622	129,451	0.96%	0.8%
Occupied	88.7%	84.5%	87.6%	0.47%	1.2%
Vacant	11.3%	15.5%	12.4%	4.21%	-2.0%
<b>Households</b>					
Total	41.0%	34.4%	34.1%	0.47%	1.2%
Under 34	20.4%	18.6%	18.5%	-0.42%	1.1%
35 to 44	20.6%	15.8%	15.6%	-2.19%	1.1%
45 to 54	19.4%	20.0%	19.1%	0.78%	0.6%
55 to 64	15.1%	18.3%	18.5%	2.47%	1.4%
65 and up	24.5%	27.2%	28.3%	1.53%	1.7%
Population Per	2.24	2.15	2.10	-0.43%	-0.27%

Sources: U.S. Bureau of the Census, 2000 and 2010;

American Community Survey, 2018; Applied Economics, 2018.

\* Compound annual rate of change.

Population and housing continue to grow (albeit at a very modest rate) as vacancy rates fall from their high, recession-era levels

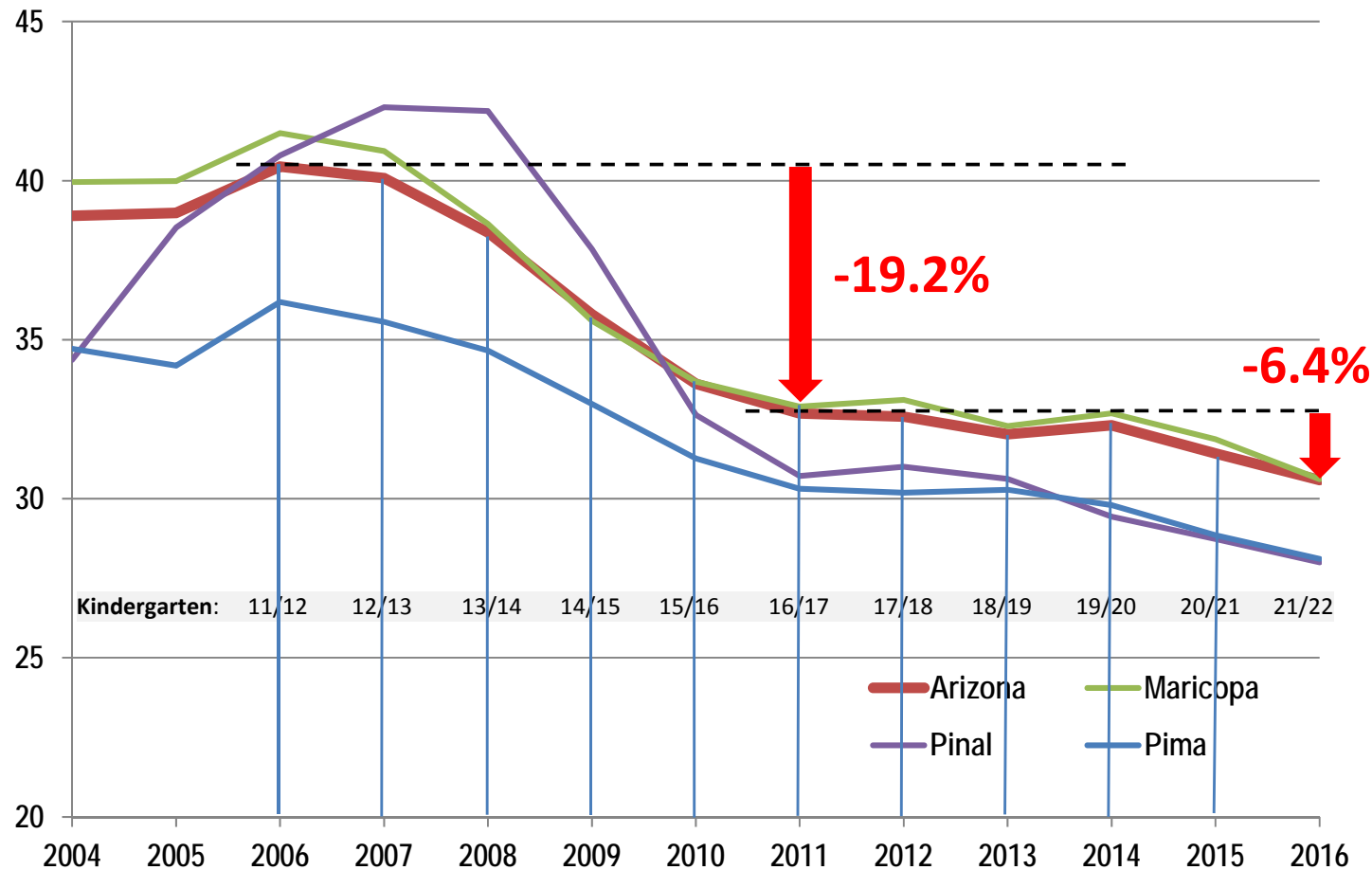
The share of the population under 18 is still falling, but at a much slower rate than in the 2000's

The age distribution of householders is shifting away from the child-bearing cohorts



# Birth Rate Trends

Births per 1,000 people aged 15 to 45



Sources: Arizona Department of Health Services; Applied Economics, 2017.

Birth rates in Arizona plummeted by 19% during the recession

The rate stabilized after 2011 before dropping another 6% over the last two years

# Alternative Providers

## Charter School Enrollment

School Year	# of Schools	KG	1st	2nd	3rd	4th	5th	6th	7th	8th	9th	10th	11th	12th	Total K-12	Annual Change
2010-11	7	25	20	24	25	25	21	182	198	182	170	154	192	245	1,463	
2011-12	9	142	147	147	142	130	255	213	200	199	183	199	190	272	2,419	956
2012-13	9	144	144	140	146	132	257	321	249	257	183	197	231	314	2,715	296
2013-14	15	236	230	216	210	182	308	328	332	252	204	213	208	339	3,258	543
2014-15	18	383	360	357	366	320	409	423	379	313	188	262	259	355	4,374	1,116
2015-16	20	451	458	403	389	391	495	577	513	499	306	322	369	460	5,633	1,259
2016-17	20	524	536	548	502	529	649	631	511	502	333	350	322	490	6,427	794
2017-18*	20	516	545	550	537	505	636	640	582	509	385	372	399	448	6,624	197

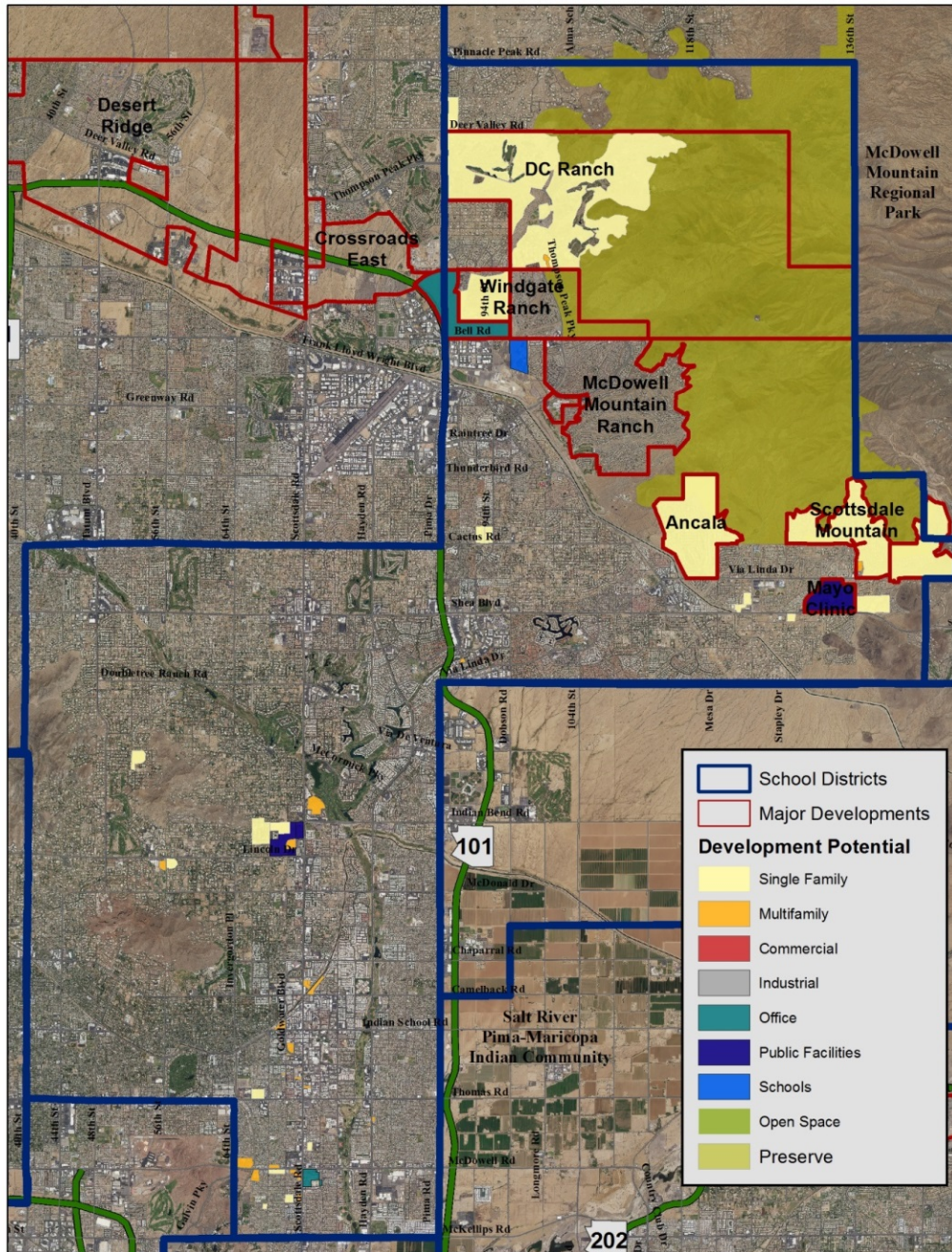
Source: Arizona Department of Education; Applied Economics 2018.

\* 2017-18 ADM

Charter school enrollment in the District has increased by about 5,200 students over the last seven years - the largest increases have been at the elementary level

Private schools in the District serve an additional 4,266 K-12 students - representing an increase of 1,150 students since 2013/14

# Development Potential



Current data shows potential for about 14,000 more housing units in the District

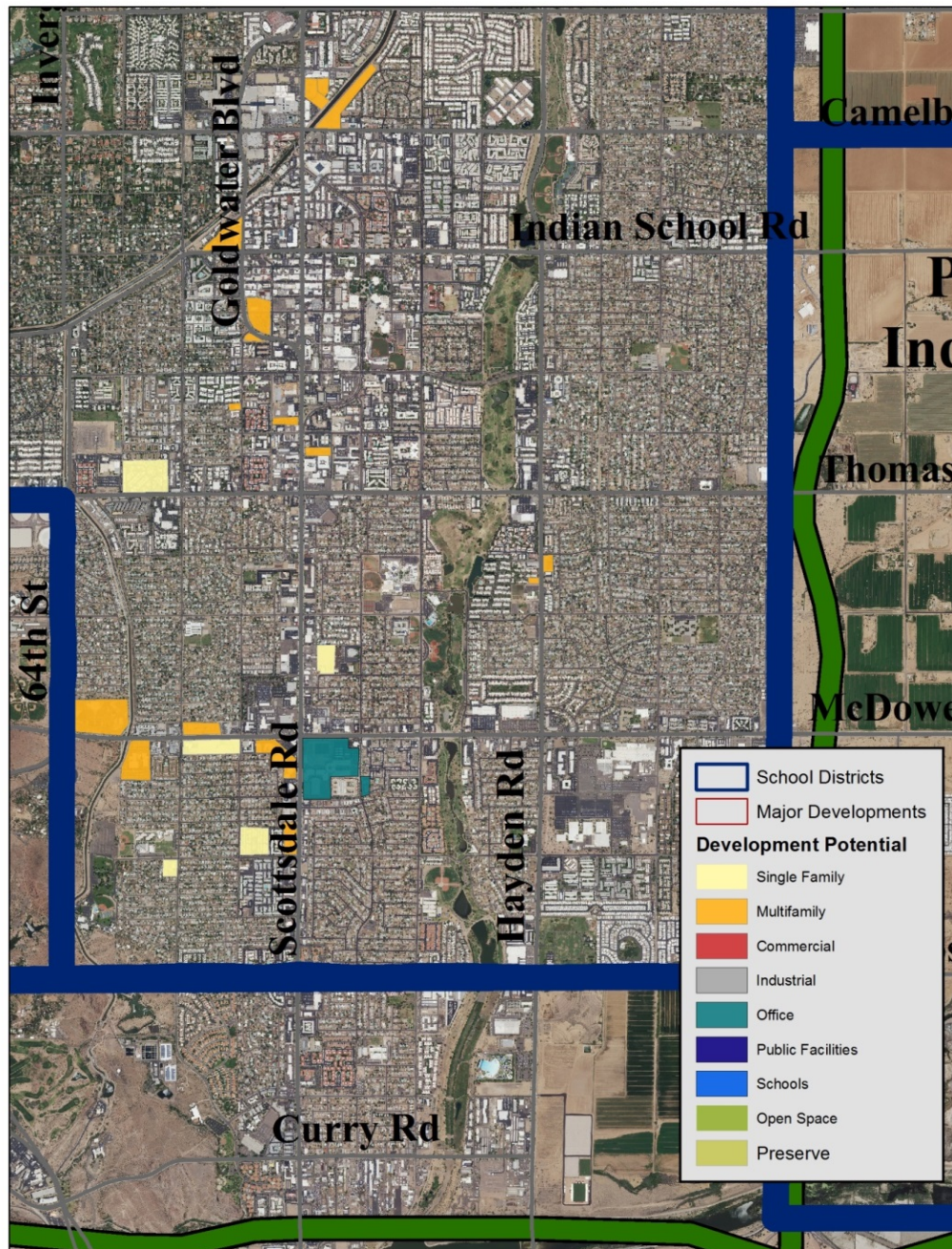
This potential includes about 5,000 single family and 9,000 multifamily housing units

About 9,000 of the 14,000 housing units will be from infill development and redevelopment

In-fill development in the western portion of the District accounts for the largest number of new single family units - DC Ranch continues to be the most active project in the north



# Development Potential



Extensive redevelopment in the southern-most part of the District, including Downtown, is anticipated

The re-use of several auto dealerships and retail centers has spawned a surge in multifamily construction

A survey of recently completed apartment buildings shows very low student generation rates

# Demographic Projections

Year	Population	Total Units	New Units	Occupancy	Households		Pop/HH
				Rate	Total	Change	
2010/11	220,818	121,621	255	84.5%	102,742	-1,226	2.149
2011/12	222,775	121,923	303	85.2%	103,868	1,126	2.145
2012/13	225,400	122,392	468	86.3%	105,587	1,719	2.135
2013/14	226,036	123,788	1,396	86.0%	106,433	846	2.124
2014/15	232,386	126,549	2,761	86.9%	110,017	3,584	2.112
2015/16	233,600	127,250	701	87.3%	111,086	1,069	2.103
2016/17	236,941	127,591	341	88.3%	112,719	1,633	2.102
2017/18	237,338	128,460	869	87.9%	112,922	203	2.102
2018/19	238,367	129,451	991	87.6%	113,374	452	2.102
2019/20	239,771	130,452	1,001	87.4%	114,011	637	2.103
2020/21	241,532	131,701	1,249	87.2%	114,860	849	2.103
2021/22	243,205	132,921	1,220	87.0%	115,679	819	2.102
2022/23	244,006	133,628	707	86.8%	116,052	373	2.103
2023/24	245,041	134,475	847	86.7%	116,546	493	2.103
2024/25	246,611	134,857	382	87.0%	117,307	761	2.102
2025/26	249,593	136,030	1,173	87.3%	118,764	1,458	2.102
2026/27	251,187	136,396	366	87.6%	119,522	758	2.102
2027/28	254,150	137,551	1,155	88.0%	120,979	1,456	2.101
2028/29	255,301	137,750	199	88.3%	121,599	620	2.100
2019/20 - 2028/29			8,299			8,225	

Source: Applied Economics, 2018.

\*Bolding Indicates Actuals

Housing additions will likely total about 8,300 housing units over the next ten years, which is similar to the last ten years

Population per household is expected to remain flat and well below the metropolitan area average

# Enrollment Projections

Year	Households	School-Age Population *		K-12 Enrollment		Net Difference	Net Enrollment -	In-District Enrollment	In-District Enrollment -
		Total	Per Household	Total	Per Household		Population Ratio		Population Ratio
2010/11	102,742	30,606	0.298	25,989	0.253	4,617	0.849	22,103	0.722
2011/12	103,868	30,626	0.295	25,691	0.247	4,935	0.839	21,755	0.710
2012/13	105,587	30,739	0.291	25,167	0.238	5,572	0.819	21,176	0.689
2013/14	106,433	29,975	0.282	24,775	0.233	5,200	0.827	20,727	0.691
2014/15	110,017	31,135	0.283	23,604	0.215	7,531	0.758	19,142	0.615
2015/16	111,086	31,026	0.279	23,414	0.211	7,612	0.755	18,920	0.610
2016/17	112,719	31,134	0.276	23,280	0.207	7,854	0.748	18,682	0.600
2017/18	112,922	30,789	0.273	22,853	0.202	7,936	0.742	18,380	0.597
2018/19	113,374	30,538	0.269	22,371	0.197	8,167	0.733	17,975	0.589
2019/20	114,011	30,480	0.267	22,051	0.193	8,429	0.723	17,692	0.580
2020/21	114,860	30,438	0.265	21,771	0.190	8,666	0.715	17,421	0.572
2021/22	115,679	30,400	0.263	21,520	0.186	8,880	0.708	17,170	0.565
2022/23	116,052	30,267	0.261	21,295	0.183	8,972	0.704	16,962	0.560
2023/24	116,546	30,124	0.258	21,088	0.181	9,036	0.700	16,735	0.556
2024/25	117,307	30,049	0.256	20,958	0.179	9,091	0.697	16,632	0.554
2025/26	118,764	30,109	0.254	20,884	0.176	9,225	0.694	16,550	0.550
2026/27	119,522	30,027	0.251	20,674	0.173	9,354	0.689	16,358	0.545
2027/28	120,979	30,080	0.249	20,633	0.171	9,447	0.686	16,348	0.543
2028/29	121,599	29,938	0.246	20,554	0.169	9,383	0.687	16,309	0.545

Source: Applied Economics, 2018.

\* Population age 5 through 17, corresponds with Kindergarten through 12th grade.

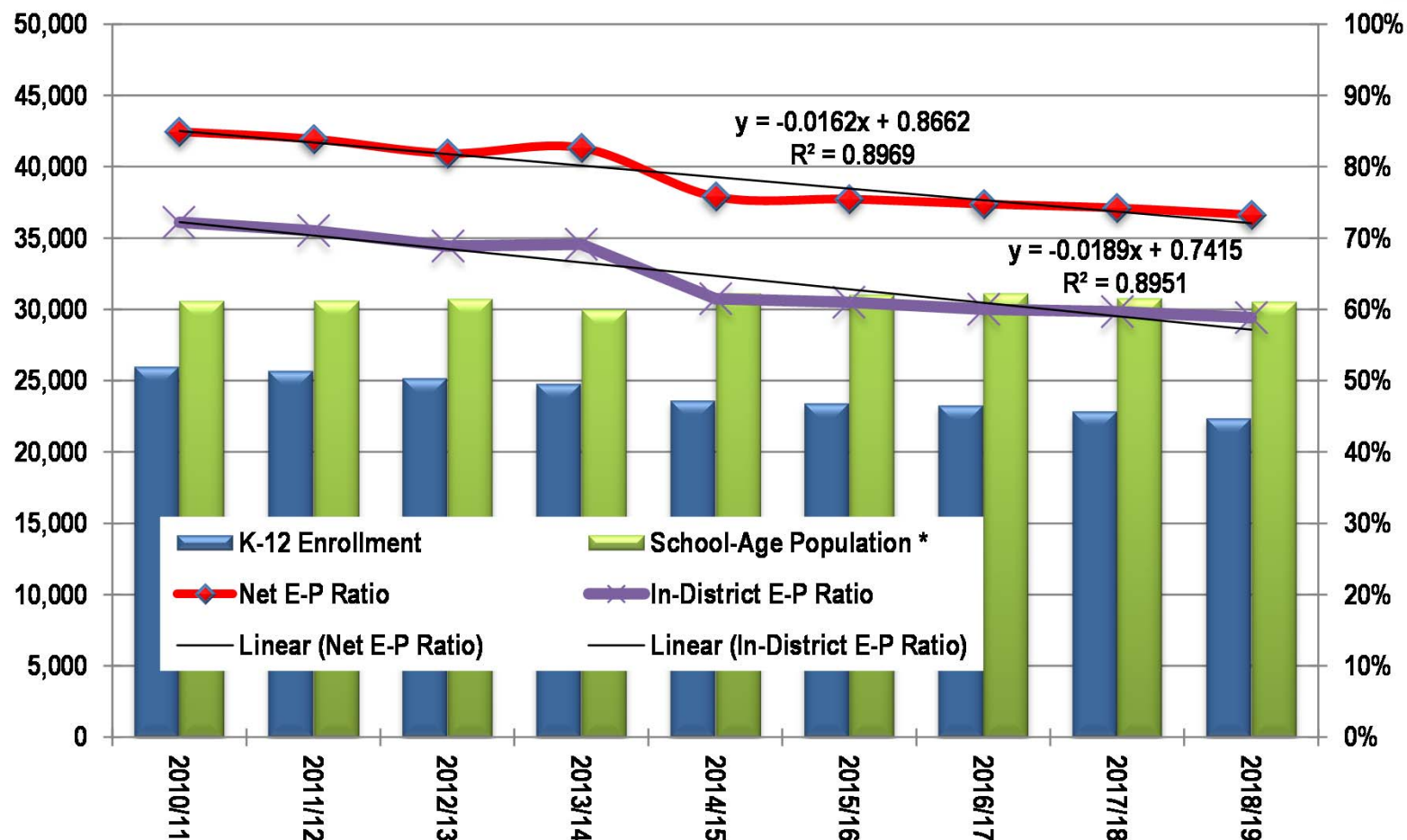
**Bolding indicates historical data.**

The net difference between school-age population and total enrollment is about 8,200 persons, resulting in a net enrollment to population (E-P) ratio of 0.733

Excluding students from outside of the District results in an in-District E-P ratio of about 0.589, meaning that only about 60 percent of the District's resident, school-age population attends a District school



# Projections - School-Age Population and Enrollment

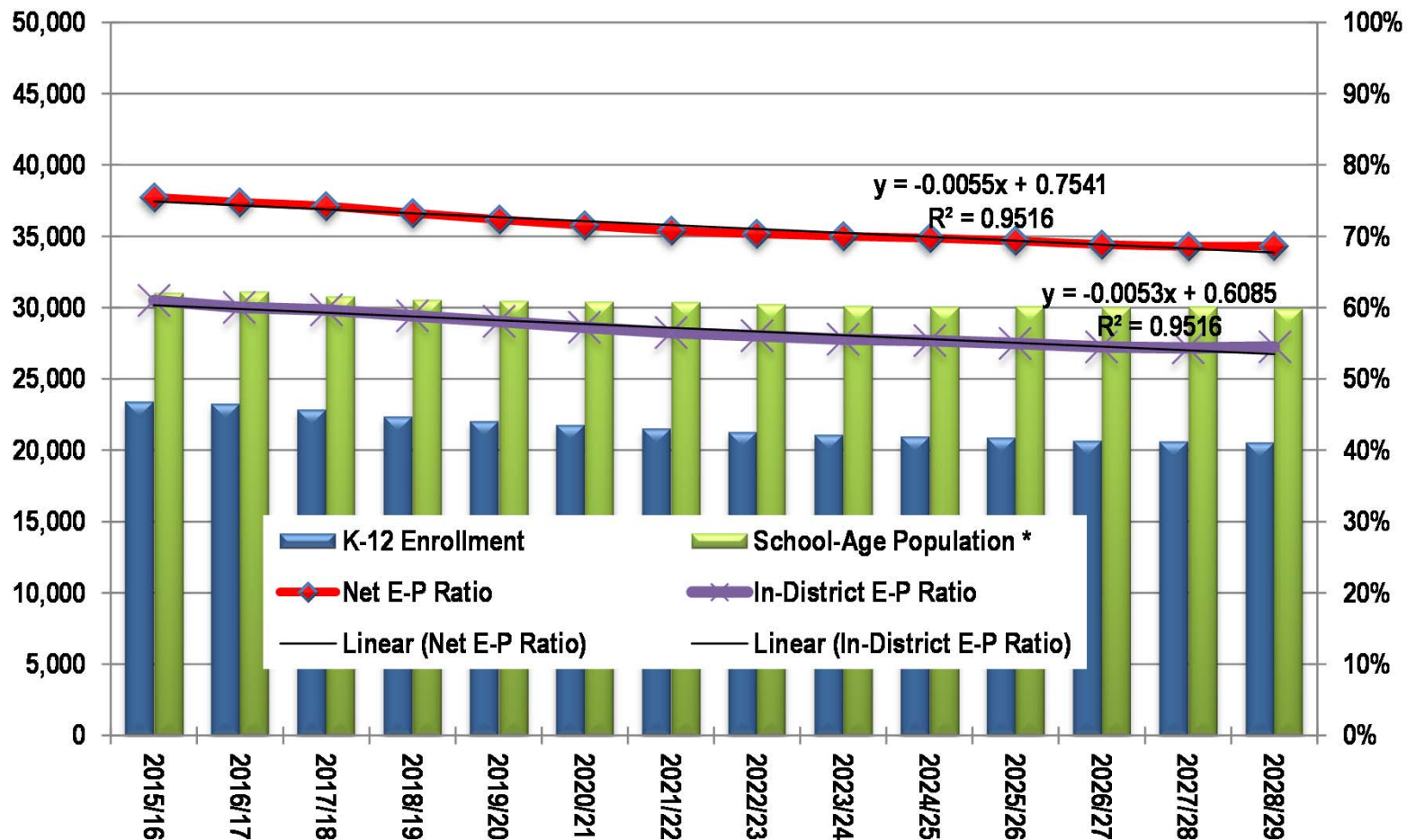


Sources: Scottsdale Unified School District; Applied Economics, 2018.

The gap between school-age population and enrollment is irregular but declining

The rate of decline is markedly less since the big drop in 2014/15

# Projections - School-Age Population and Enrollment



Sources: Scottsdale Unified School District; Applied Economics, 2018.

An extension of the trend exhibited since 2014/15 was used to produce the projection contained in this presentation – other scenarios are possible

The rate of decline of the net E-P ratio will be about 0.55 percent per year, compared with the 10-year decline rate of 1.62 percent

# District Enrollment Projections

Fall	Enrollment by Level				K-12 Total		
	K-5	6-8	K-8	9-12	Enrollment	Change	% Change
2010/11	11,266	5,798	17,064	8,925	25,989	-407	-1.5%
2011/12	11,088	5,898	16,986	8,705	25,691	-298	-1.1%
2012/13	10,856	5,613	16,469	8,698	25,167	-524	-2.0%
2013/14	10,555	5,684	16,239	8,536	24,775	-392	-1.6%
2014/15	9,749	5,442	15,191	8,413	23,604	-1,171	-4.7%
2015/16	9,690	5,299	14,989	8,425	23,414	-190	-0.8%
2016/17	9,417	5,356	14,773	8,507	23,280	-134	-0.6%
2017/18	9,192	5,298	14,490	8,363	22,853	-427	-1.8%
2018/19	8,788	5,210	13,998	8,373	22,371	-482	-2.1%
2019/20	8,573	5,100	13,673	8,378	22,051	-320	-1.4%
2020/21	8,466	4,983	13,449	8,322	21,771	-280	-1.3%
2021/22	8,407	4,862	13,269	8,251	21,520	-251	-1.2%
2022/23	8,314	4,744	13,058	8,237	21,295	-226	-1.0%
2023/24	8,372	4,600	12,972	8,116	21,088	-207	-1.0%
2024/25	8,400	4,511	12,911	8,047	20,958	-129	-0.6%
2025/26	8,456	4,438	12,894	7,990	20,884	-75	-0.4%
2026/27	8,475	4,483	12,958	7,716	20,674	-210	-1.0%
2027/28	8,521	4,504	13,025	7,608	20,633	-41	-0.2%
2028/29	8,533	4,512	13,045	7,509	20,554	-78	-0.4%

Source: Applied Economics, 2018.

Bolding indicates actuals.

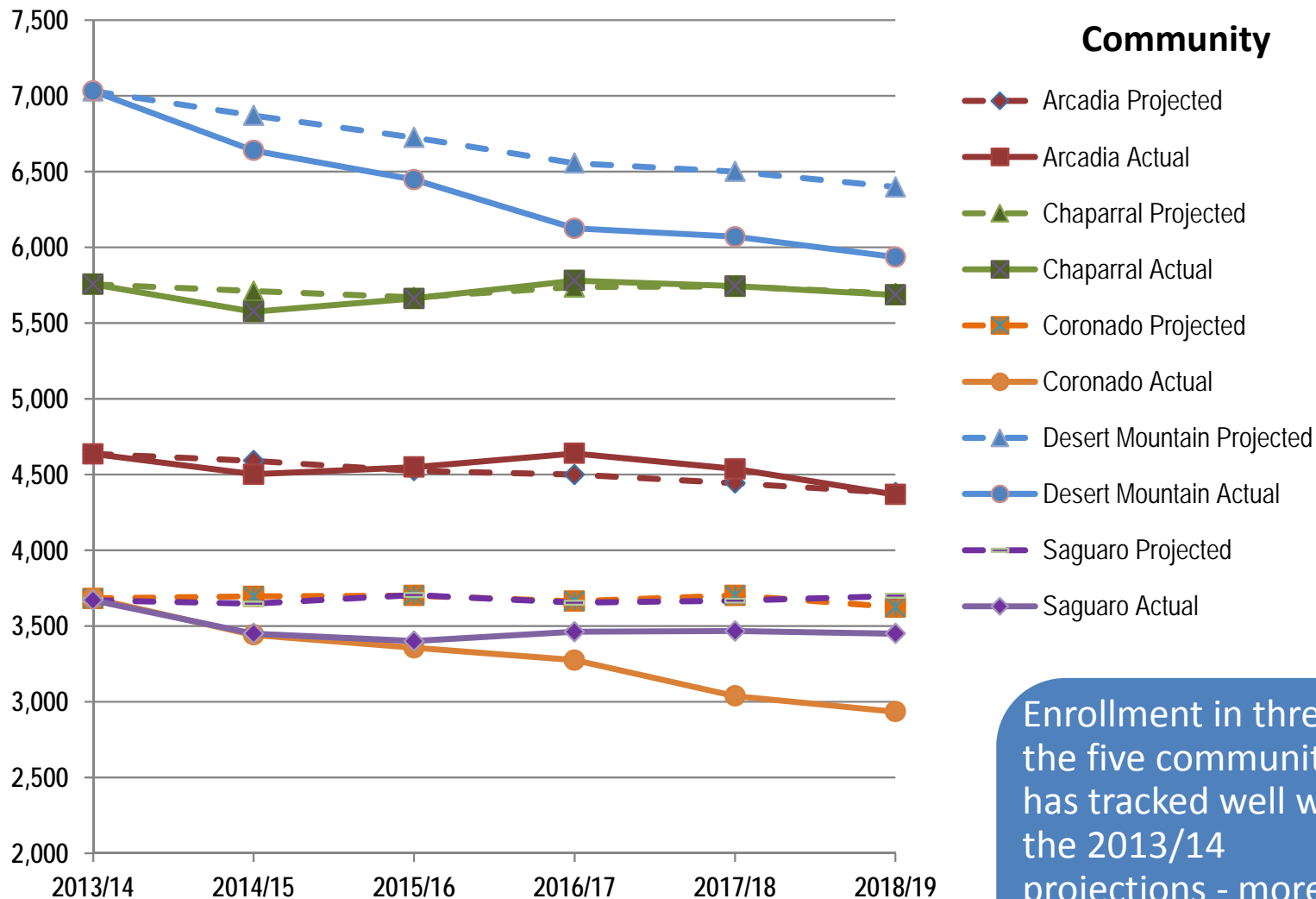
An overall decline of about 1,800 students over the next 10 years is projected, but it could be more (or less) depending on the E-P ratio

K-8 enrollment is projected to continue to decline through at least 2025/26

High school enrollment is projected to remain fairly stable for the next three to four years, and then decline as smaller classes advance

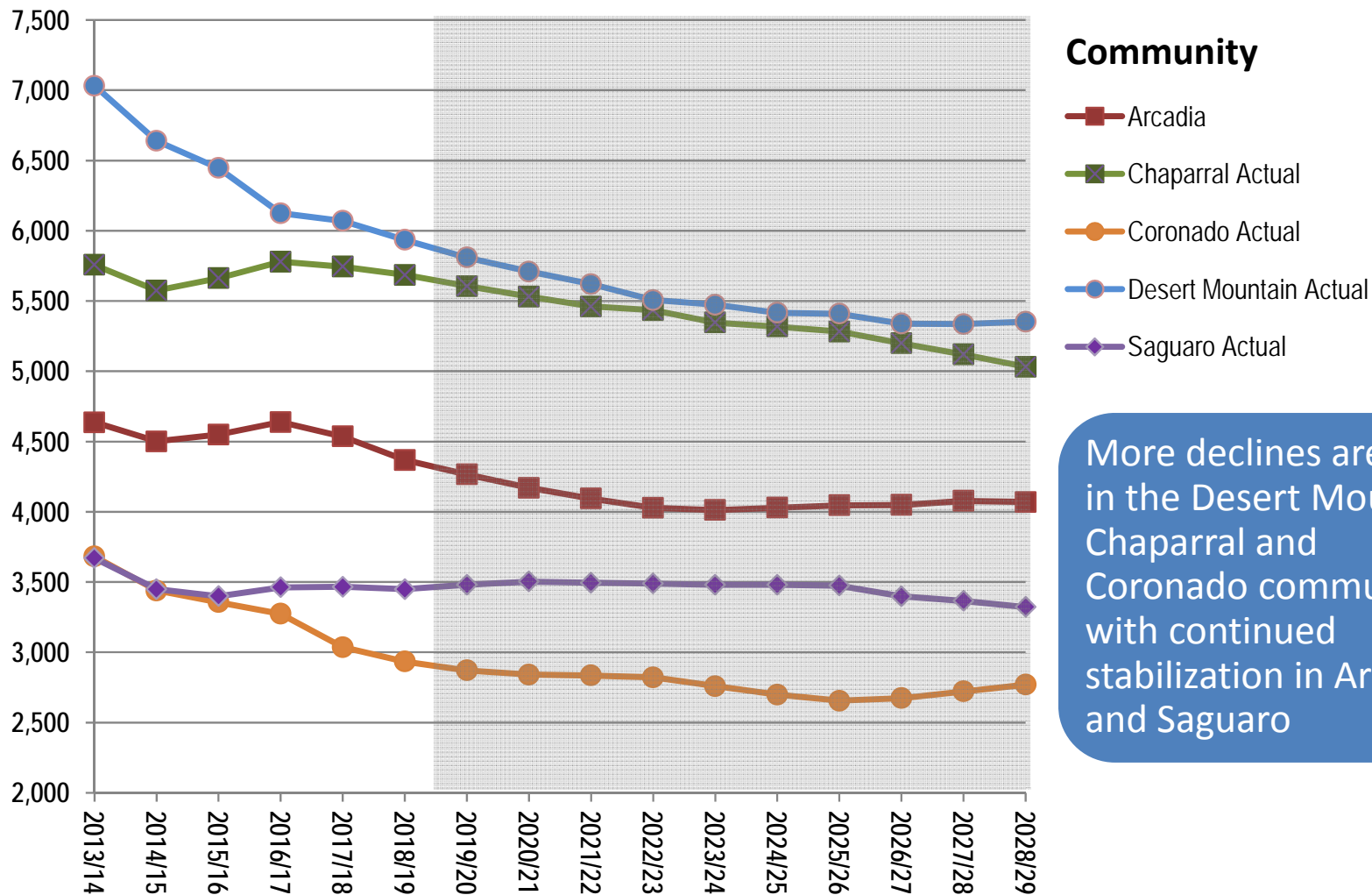


# Sub-District Projections



Enrollment in three of the five communities has tracked well with the 2013/14 projections - more alternative providers have emerged in the northern and southern communities

# Sub-District Projections



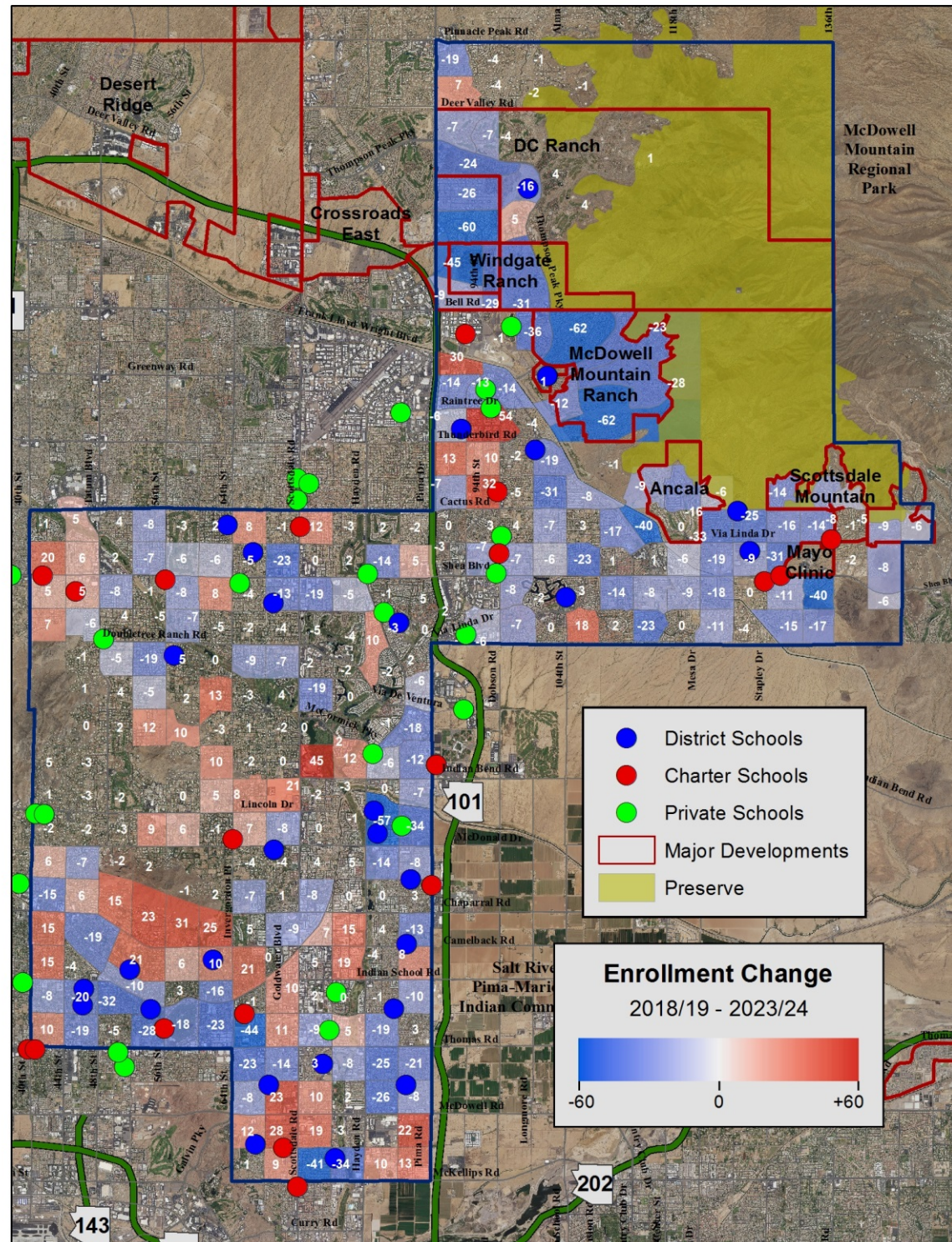
More declines are likely in the Desert Mountain, Chaparral and Coronado communities, with continued stabilization in Arcadia and Saguaro



# Enrollment Change

2018/19 – 2023/24

Projections through 2023/24 anticipate continued declines in the north and more enrollment increases in established areas





## 2023/24 – 2028/29

**Enrollment Change**  
2023/24 - 2028/29

Legend:

- District Schools (Blue circle)
- Charter Schools (Red circle)
- Private Schools (Green circle)
- Major Developments (Red outline)
- Preserve (Yellow background)

Color Scale: -60 (Blue) to +50 (Red)

# Sub-District Projections

## Attendance Area vs. School

School Attended		School Attendance Area of Residence						Outside District	Total Attend	Total Reside	Difference
		1000	2000	3000	4000	5000	6000				
Arcadia High School	1000	935	12		78	4	35	669	1,733	1,032	701
Chaparral High School	2000	17	1,056	323	26	264	130	485	2,301	1,535	766
Coronado High School	4000	46	3		631		11	251	942	1,043	-101
Desert Mountain High	5000	1	26	51	8	1,769	15	258	2,128	2,087	41
Saguaro High School	6000	29	43	4	297	32	689	165	1,259	883	376
Other/On-line		4	14	3	3	18	3	18	63	0	63
Total		1,032	1,154	381	1,043	2,087	883	1,846	8,426	6,580	1,846
Total Attending School for Residence Area										5,403	
Percent Attending School of Residence Area		91%	92%	85%	60%	85%	78%			82%	

Source: Scottsdale Unified School District, Applied Economics, 2018.

At the high school level, 18 percent of resident students do not attend their school of residence and over 1,800 students come from outside of the District - the largest net in-flows are at Chaparral High School and Arcadia High School

At the elementary and middle school level, 36 percent of resident students do not attend their school of residence and nearly 2,700 students come from outside of the District - the largest net in-flows are at Cochise Elementary and Mohave Middle School



# Sub-District Projections

## Attendance Area vs. School

School Attended / School ID	School Attendance Area of Residence																					Outside District	Total Attend	Total Reside	Diff.
	100	101	102	200	201	202	203	301	401	402	403	404	500	501	502	600	601	602	700	701	702				
Ingleside Middle School 100	508		1	1							43					1			12			283	849	630	219
Hopi Elementary School 101		498	89		1				3	6	16	5					1			5	12	114	750	573	177
Tavan Elementary School 102		12	334						2	2	14	5			1		2			2	4	308	686	578	108
Echo Canyon K-8 103	57	21	40	2					9	11	65	20				1	1		6		6	171	410	0	410
Cocopah Middle School 200	7			578				5			5		40			16			56			187	895	627	268
Cherokee Elementary School 201		11	3		343	31	56		1	5	3	1			18		3	5		79	7	197	763	380	383
Cochise Elementary School 202		2			12	345	12	3	2	1	1	5		7	64		14	14		48	13	57	600	445	155
Sequoia Elementary School 203			1		10	2	266	2	1	2				2	8				4	5	7	182	492	350	142
Copper Ridge School 301				4		1		568					36	28	12	5	2	1	3			127	787	736	51
Hohokam Traditional School 401			7						244	40	49	58								9	23	65	495	419	76
Pima Elementary School 402		3	20		1	1			53	212	39	37		1	1			1		3	38	70	480	420	60
Tonalea K-8 403	26		24	1		2			19	29	598	53	1						8		4	119	884	1204	-320
Yavapai Elementary School 404			1						11	13	30	227					2				19	26	329	454	-125
Desert Canyon Middle School 500				8				12			1		413		1	27			5			47	514	708	-194
Desert Canyon Elementary School 501						1	2	18		4				283	105		12	3		3	1	49	481	406	75
Redfield Elementary School 502			1		4	13	6	11	1	2				10	359		19	14		4	5	43	492	911	-419
Cheyenne Traditional School 503	2	2		14	2	12	2	107		1	1	1	147	63	245	85	74	79	3	5	1	111	957	0	957
Mountainside Middle School 600				5				5			3		65			471			5			98	652	610	42
Anasazi Elementary School 601						1	1							5	20		239	36		1	2	98	403	457	-54
Laguna Elementary School 602					1	15		2		1	1	2		6	53		72	284		3	1	29	470	448	22
Mohave Middle School 700	29			14				2			277		6			4			470		1	91	894	568	326
Kiva Elementary School 701		13	32		4	6	2		15	19	26	8			9		7	3		188	102	70	504	423	81
Navajo Elementary School 702		7	8		1				18	18	9	12			1					5	220	43	342	679	-337
Pueblo Elementary School 703		4	16		1	15	2	1	40	54	23	19		1	14		9	4		63	212	72	550	0	550
Other/On-line	1	0	1	0	0	0	0	0	0	0	0	1	0	0	0	0	0	0	0	0	1	6	10	0	10
Total	630	573	578	627	380	445	350	736	419	420	1,204	454	708	406	911	610	457	448	568	423	679	2,663	14,689	12,026	2,663
Total Attending School of Residence Area																								7,648	
Percent Attending School of Residence Area	81%	87%	58%	92%	90%	78%	76%	77%	58%	50%	50%	50%	58%	70%	39%	77%	52%	63%	83%	44%	32%			64%	

Source: Scottsdale Unified School District, Applied Economics, 2018



# Elementary Projection Example

School	Year	School Enrollment by Grade							Differences					Attendance Area by Grade							
		KG	1st	2nd	3rd	4th	5th	Total	In-Dist	In-Dist%	Outside	Outside%	Total	KG	1st	2nd	3rd	4th	5th	Total	
202																					
Cochise Elementary School	2013/14	84	100	99	115	95	103	596	90	119.3%	40	6.7%	130	54	78	73	92	76	93	466	
Cochise Elementary School	2014/15	88	84	99	98	119	91	579	104	124.5%	51	8.8%	155	71	56	71	68	88	70	424	
Cochise Elementary School	2015/16	95	95	98	96	110	119	613	103	123.3%	68	11.1%	171	62	77	65	71	74	93	442	
Cochise Elementary School	2016/17	76	94	93	96	98	105	562	106	126.8%	60	10.7%	166	45	71	74	65	73	68	396	
Cochise Elementary School	2017/18	93	88	100	95	100	101	577	107	125.9%	57	9.9%	164	65	55	77	76	72	68	413	
Cochise Elementary School	2018/19	89	91	86	99	106	104	575	111	127.1%	54	9.4%	165	61	68	54	78	79	70	410	
Cochise Elementary School	2019/20	85	89	91	84	101	102	552	107	127.1%	50	9.1%	157	60	61	67	52	80	75	395	
Cochise Elementary School	2020/21	84	86	89	89	86	98	532	108	129.0%	50	9.4%	158	58	60	61	65	54	76	374	
Cochise Elementary School	2021/22	84	85	86	88	91	84	518	114	132.2%	50	9.7%	164	58	58	60	59	67	52	354	
Cochise Elementary School	2022/23	83	85	85	85	90	88	516	111	131.3%	50	9.7%	161	56	58	58	58	61	64	355	
Cochise Elementary School	2023/24	82	84	86	84	88	88	512	119	134.7%	50	9.8%	169	55	56	58	57	60	58	343	
Cochise Elementary School	2024/25	82	83	85	85	87	86	508	121	136.0%	50	9.8%	171	54	55	56	56	58	57	337	
Cochise Elementary School	2025/26	82	84	84	85	88	86	509	127	138.4%	50	9.8%	177	53	54	55	55	58	56	332	
Cochise Elementary School	2026/27	82	83	85	83	87	86	506	131	140.3%	50	9.9%	181	52	53	54	54	56	56	325	
Cochise Elementary School	2027/28	82	83	84	84	86	85	504	135	142.4%	50	9.9%	185	51	52	53	53	55	54	319	
Cochise Elementary School	2028/29	81	83	84	83	86	84	501	139	144.7%	50	10.0%	189	50	51	52	52	54	53	312	
203																					
Sequoia Elementary School	2013/14	88	79	63	92	91	88	501	-10	97.1%	163	32.5%	153	62	47	47	67	57	68	348	
Sequoia Elementary School	2014/15	62	86	76	61	94	88	467	-14	95.7%	155	33.2%	141	39	59	50	54	66	58	326	
Sequoia Elementary School	2015/16	82	67	85	81	72	95	482	-3	99.1%	149	30.9%	146	59	44	58	48	66	61	336	
Sequoia Elementary School	2016/17	91	82	67	82	81	78	481	-9	97.3%	156	32.4%	147	56	55	48	56	50	69	334	
Sequoia Elementary School	2017/18	74	91	88	78	93	83	507	-13	96.2%	181	35.7%	168	52	60	56	59	63	49	339	
Sequoia Elementary School	2018/19	78	72	96	85	75	84	490	-26	92.2%	182	37.1%	156	44	51	66	59	57	57	334	
Sequoia Elementary School	2019/20	80	79	72	95	87	73	486	-23	92.9%	183	37.7%	160	50	45	51	65	61	55	326	
Sequoia Elementary School	2020/21	79	81	79	71	97	85	492	-13	96.0%	184	37.4%	171	48	50	45	50	67	59	321	
Sequoia Elementary School	2021/22	78	80	82	79	73	95	487	-8	97.5%	185	38.0%	177	47	49	51	45	52	66	310	
Sequoia Elementary School	2022/23	78	79	80	81	81	71	470	-7	97.5%	186	39.6%	179	47	48	50	50	46	51	291	
Sequoia Elementary School	2023/24	78	79	80	80	84	80	481	5	101.9%	187	38.9%	192	47	48	48	49	52	45	289	
Sequoia Elementary School	2024/25	78	79	80	80	83	83	483	4	101.2%	188	38.9%	192	46	48	48	48	51	51	291	
Sequoia Elementary School	2025/26	78	80	80	80	83	82	483	5	101.6%	189	39.1%	194	46	47	48	48	50	50	289	
Sequoia Elementary School	2026/27	78	80	81	80	82	82	483	7	102.4%	190	39.3%	197	46	47	48	48	50	49	286	
Sequoia Elementary School	2027/28	78	80	81	81	83	81	484	8	102.9%	191	39.5%	199	46	47	47	47	50	48	285	
Sequoia Elementary School	2028/29	78	79	81	81	83	82	484	10	103.5%	192	39.7%	202	45	46	47	47	49	48	282	

The school model combines projections for attendance areas with information about intra-District movement and out-of-District students

# Elementary Projections

School Attended / School ID	2013/14	2014/15	2015/16	2016/17	2017/18	2018/19	2019/20	2020/21	2021/22	2022/23	2023/24	2024/25	2025/26	2026/27	2027/28	2028/29
Ingleside Middle School	739	772	756	861	891	847	843	828	829	802	808	806	808	815	819	822
Hopi Elementary School	900	839	848	873	827	750	705	665	645	608	595	609	631	650	668	684
Tavan Elementary School	729	702	721	699	685	639	615	606	592	588	595	584	581	579	583	580
Echo Canyon K-8	501	455	472	472	406	393	377	362	359	351	350	342	334	351	335	324
Cocopah Middle School	884	897	886	928	907	894	857	900	892	891	857	843	831	833	829	826
Cherokee Elementary School	527	484	534	590	633	667	677	663	666	659	663	646	646	642	642	637
Cochise Elementary School	596	579	613	562	577	575	552	532	518	516	512	508	509	506	504	501
Sequoia Elementary School	501	467	482	481	507	490	486	492	487	470	481	483	483	483	484	484
Copper Ridge School	1,163	1,085	1,061	1,000	877	753	682	630	600	585	576	554	546	541	544	537
Hohokam Traditional School	428	409	427	436	483	433	425	433	433	433	427	437	441	445	452	459
Pima Elementary School	607	565	528	503	452	431	426	421	439	456	460	464	466	462	458	454
Tonalea K-8	404	338	335	914	859	861	785	717	647	654	669	683	697	724	735	753
Yavapai Elementary School	430	408	383	349	295	266	254	252	244	229	236	240	251	258	266	276
Desert Canyon Middle School	599	566	563	530	561	513	551	542	529	503	475	494	477	507	504	512
Desert Canyon Elementary School	510	501	472	457	474	462	438	423	424	422	429	428	432	432	434	431
Redfield Elementary School	558	484	438	419	452	471	467	476	479	490	511	511	509	502	499	493
Cheyenne Traditional School	1,044	976	984	921	937	931	932	912	909	895	859	835	830	828	824	825
Mountainside Middle School	815	764	689	690	639	651	600	553	529	515	508	496	502	496	527	539
Anasazi Elementary School	635	567	573	495	473	378	369	358	361	353	352	369	373	375	379	381
Laguna Elementary School	572	529	476	422	371	394	380	377	381	387	390	400	407	413	420	426
Mohave Middle School	834	812	783	814	853	892	975	1,028	1,057	1,036	1,018	978	946	935	949	942
Kiva Elementary School	521	460	478	467	453	474	461	465	447	424	421	426	430	431	434	436
Navajo Elementary School	418	363	346	385	375	342	321	316	311	300	300	299	292	284	279	272
Pueblo Elementary School	529	491	496	505	503	478	479	482	476	476	464	461	457	452	447	442
Other	71	0	16	16	12	13	16	15	15	15	16	15	15	14	9	9
Total	15,515	14,513	14,360	14,789	14,502	13,998	13,673	13,448	13,269	13,058	12,972	12,911	12,894	12,958	13,024	13,045

Source: Scottsdale Unified School District, Applied Economics, 2018

Elementary school projections show five schools will continue to have less than 400 students, and two more will likely have less than 450 students, by 2028/29

# Secondary Projections

School	2013/14	2014/15	2015/16	2016/17	2017/18	2018/19	2019/20	2020/21	2021/22	2022/23	2023/24	2024/25	2025/26	2026/27	2027/28	2028/29
Arcadia High School	1,743	1,733	1,752	1,734	1,727	1,733	1,726	1,710	1,669	1,679	1,665	1,688	1,692	1,654	1,673	1,659
Chaparral High School	2,077	2,063	2,086	2,219	2,243	2,301	2,352	2,314	2,298	2,313	2,257	2,284	2,268	2,194	2,117	2,047
Coronado High School	1,076	1,042	1,038	1,072	948	942	982	1,018	1,072	1,050	967	875	801	785	811	828
Desert Mountain High	2,275	2,252	2,252	2,191	2,163	2,138	2,073	2,068	2,008	1,942	1,949	1,884	1,879	1,786	1,749	1,745
Saguaro High School	1,365	1,323	1,297	1,291	1,282	1,259	1,245	1,212	1,204	1,253	1,278	1,317	1,349	1,297	1,257	1,231
Total	8,536	8,413	8,425	8,507	8,363	8,373	8,378	8,322	8,251	8,237	8,116	8,048	7,989	7,716	7,607	7,510

Source: Scottsdale Unified School District, Applied Economics, 2018.

Losses are projected at all of the high schools by the end of the projection period, with the largest being at Desert Mountain and Chaparral



# Conclusions

Enrollment is likely to decline over the next ten years, the amount of which will be determined by competition and changes in the enrollment-population ratio

Demographic trends do not indicate the potential for an increase in the school-age population, although some established areas are likely to stabilize toward the end of the projection period

Housing construction will remain steady, but the bulk of new housing during the projection period will be multifamily that is not targeted to families with children

At least four elementary and middle schools, and one high school, show very low enrollment levels continuing throughout the projection period