

PHASE 1 | December 1st 2017 - December 8th 2017



1 TEMPORARY FENCING

2 CONSTRUCTION ENTRANCE

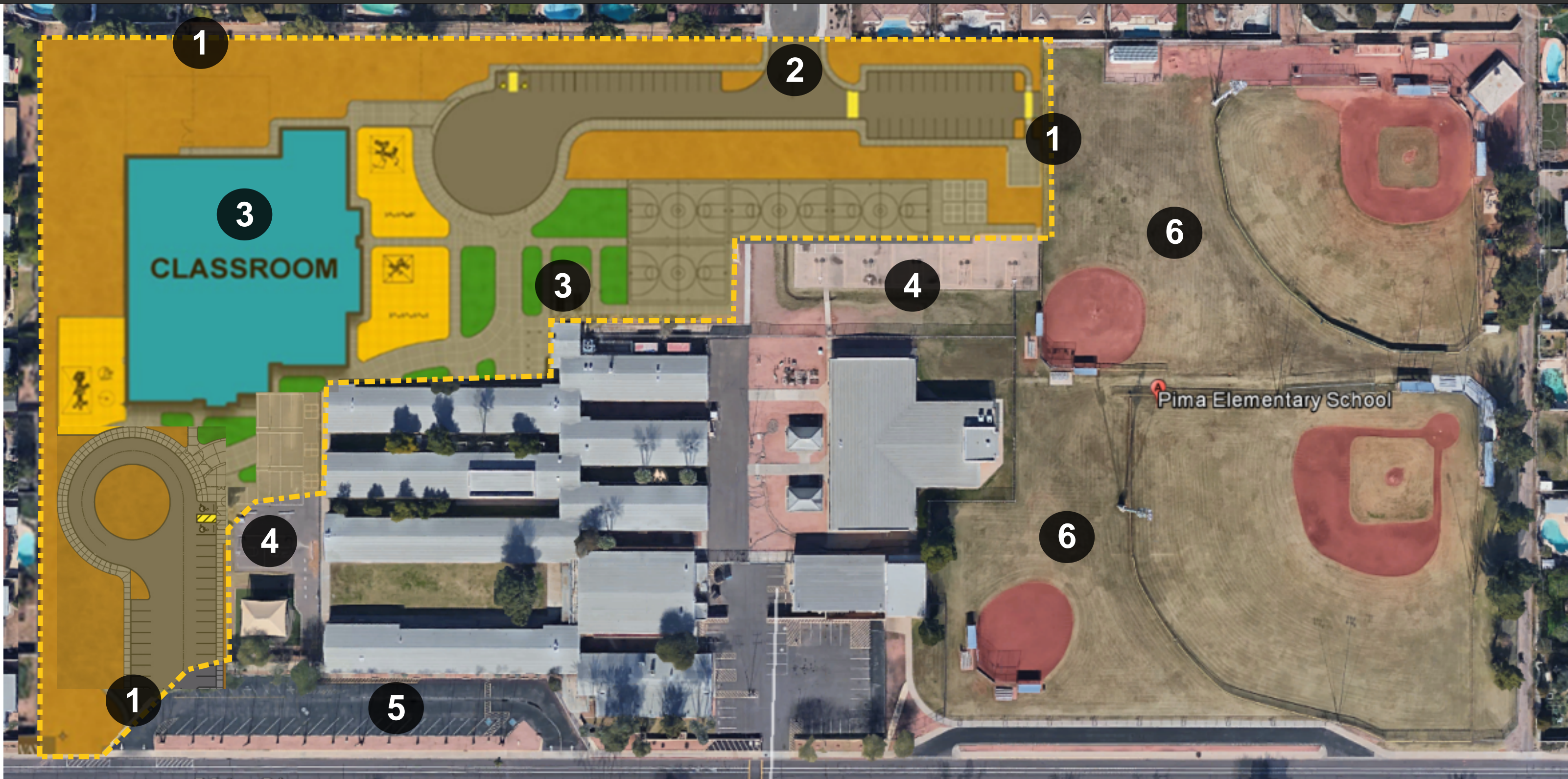
3 DEMOLISH EXISTING CLASSROOM BUILDING

4 COURTS & PLAY AREAS REMAIN

5 MAINTAIN PARKING & DROP-OFF

6 CONSTRUCTION PARKING

PHASE 2 | December 11th 2017 - May 25th 2018



1 TEMPORARY FENCING

2 CONSTRUCTION ENTRANCE

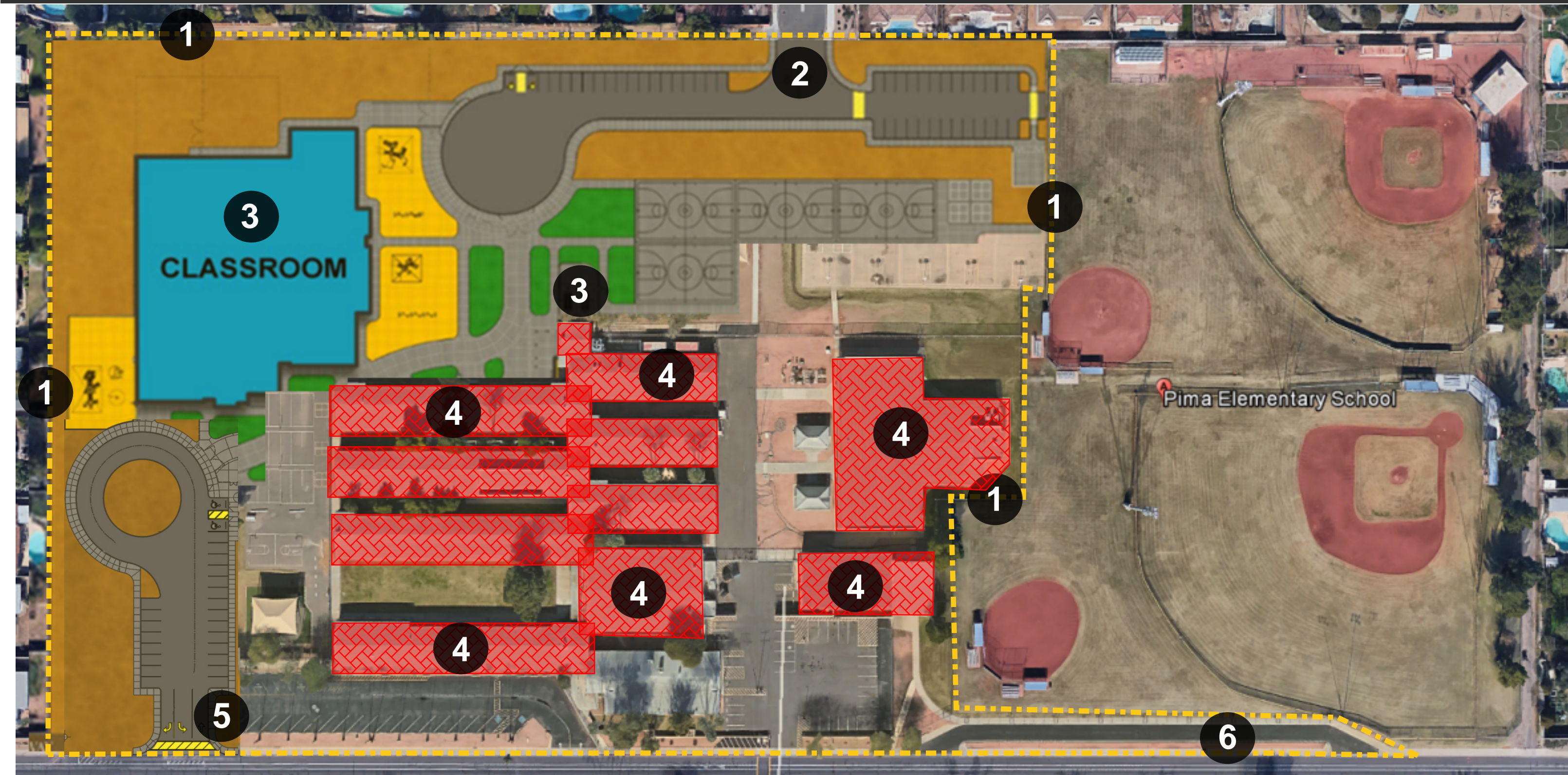
3 CONSTRUCT CLASSROOM
BUILDING & CENTRAL PLANT

4 COURTS & PLAY AREAS REMAIN

5 MAINTAIN PARKING & DROP-OFF

6 FIELDS AVAILABLE FOR USE

PHASE 3 | May 28th 2018 - July 27th 2018



1 TEMPORARY FENCING

2 CONSTRUCTION ENTRANCE

3 FINISH CLASSROOM
BUILDING & CENTRAL PLANT

4 ABATE / DEMO REMAINDER
OF BUILDINGS

5 COMPLETE DRIVE ENTRANCE

6 DEMO EXISTING DRIVE

PHASE 4 | July 30th 2018 - December 28th 2018



- | | | |
|--------------------------------|--|---|
| 1 TEMPORARY FENCING | 3 CLASSROOM BUILDING & CENTRAL PLANT COMPLETE | 5 PLAYGROUNDS COMPLETE FOR STUDENT USE |
| 2 CONSTRUCTION ENTRANCE | 4 CONSTRUCT ADMIN & MULTI-PURPOSE BUILDINGS | 6 NEW DRIVE ACCESS OPEN |