



Fulton County Schools:

# CLIP Input and Feedback

Federal Programs

March 31, 2021

April 1, 2021

10:00 am and 1:00pm



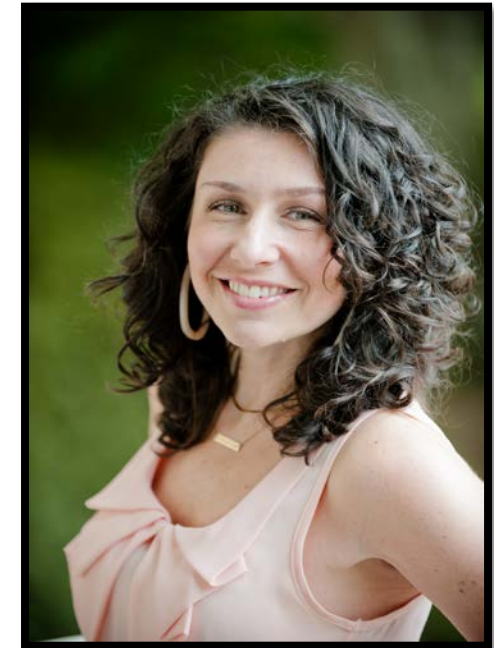
## Federal Programs Team



**Alex Bates**  
**Executive Director**  
**Professional Learning**



**Catherine Harper**  
**Director**  
**Federal Programs**



**Becca Goddard**  
**Coordinator**  
**Federal Programs**



## Federal Programs Team



**Wendy Newbold**  
**Coordinator**  
**ESOL**



**Sabrina Callaway**  
**South County**  
**Homeless Liaison**  
**and Foster Care**



**Shawnette Miller**  
**North County**  
**Homeless Liaison**



## Federal Programs Team



**Blake McGaha**  
**Executive Director**  
**Exceptional Children**

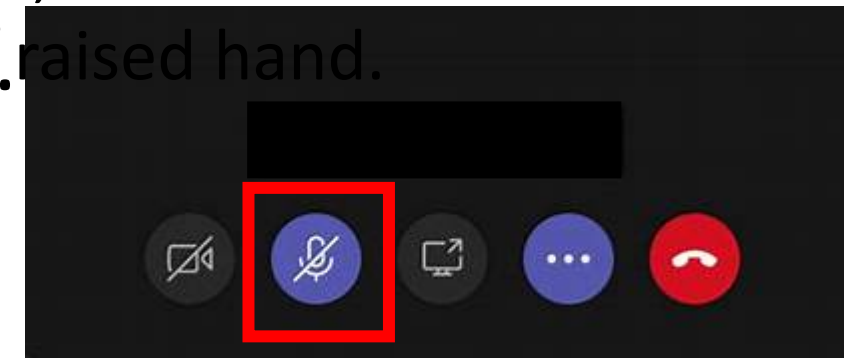
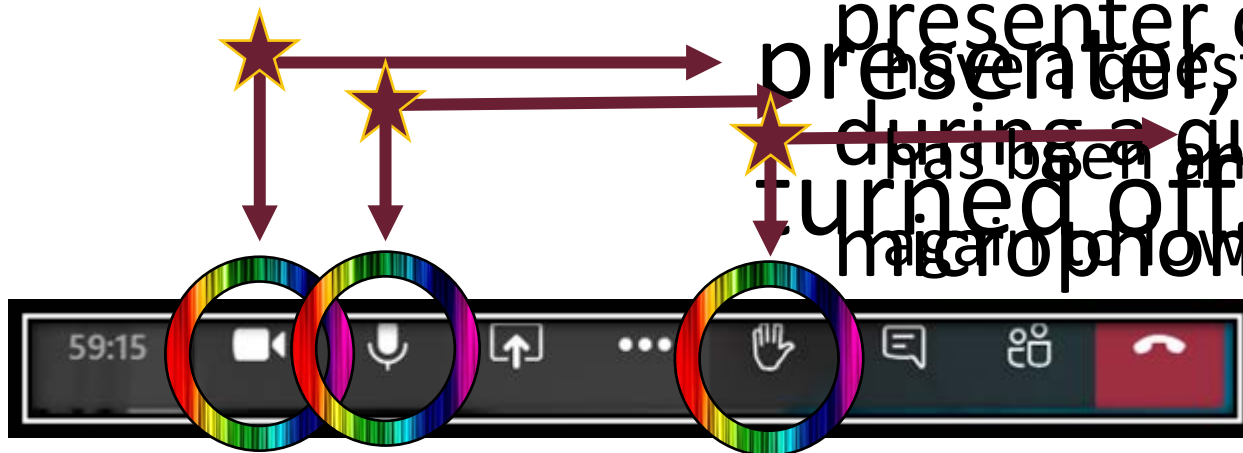


**Mayte Lara**  
**Specialist II**  
**Parent Liaison**

## Let's review *virtual norms* for meetings

*Raise your hand:* if you have a

*Camera:* unless you are the presenter or are asking a question during a question session, keep your camera turned off. Once a question has been answered, select the hand raised icon to raise your hand.





## Agenda



- **Understand Federal Programs and Streamlined Consolidated LEA Improvement Plan (S-CLIP)**
- **Understand the associated programs Fulton receives (Title I, Title II, Title III, Title IV, 1003a, Title VIB (IDEA), McKinney-Vento)**
- **Provide feedback on Federal Programs in Fulton County Schools**





## What are Federal Programs?

# Federal Programs



### EDUCATION PROGRAMS

The Federal government designates funds for specific education programs



### REQUIREMENTS

Each program has specific criteria to follow as identified by the government



### SUPPLEMENTAL

All programs are considered "supplemental" or additional to state and local funds

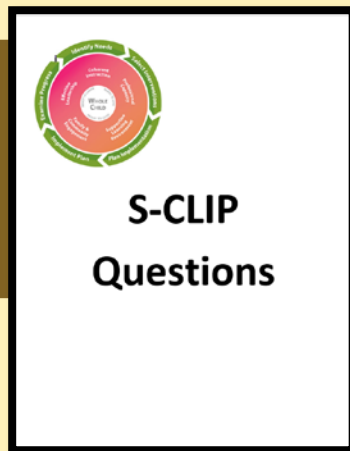


### CONSOLIDATED PLAN

The consolidated plan allows us to submit one plan, rather than individual program plans



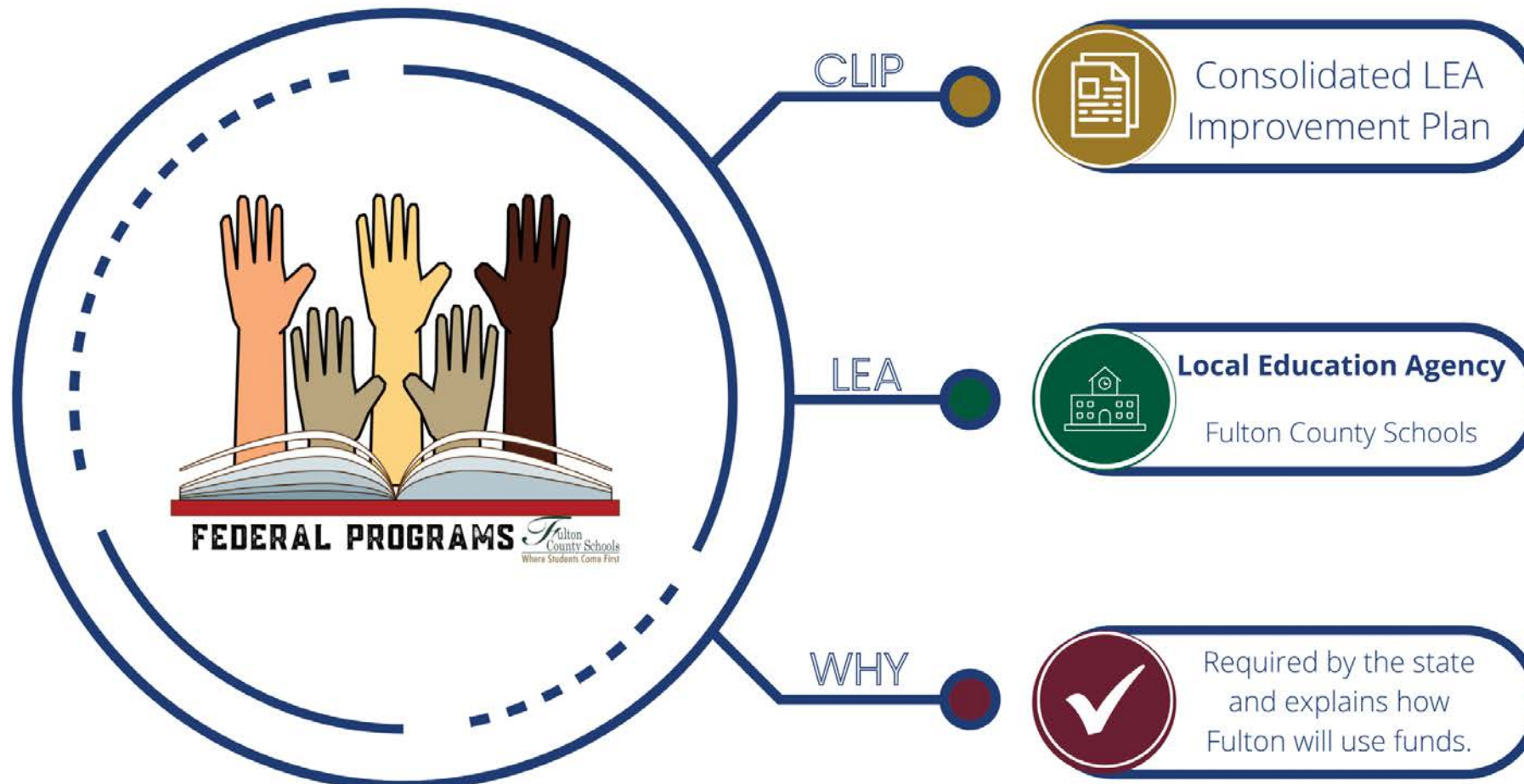
## S-CLIP Questions





## What is the CLIP?

### WHAT IS AN S-CLIP?



### WHAT COMPONENTS MAKE-UP THE PARENT AND FAMILY ENGAGEMENT PLAN?



Jointly Developed



Supporting Schools



Building Parent and Staff Capacity



Providing Input On Spending



Evaluating Parent Engagement Effectiveness



# Equity Action Plan and Foster Care Transportation

## Equity Action Plan

**FY20 Local Education Agency (LEA) Equity Action Plan**  
Document must be uploaded as an attachment to the CLIP

**Fiscal Year** 2020 **LEA Name** Fulton County Schools **LEA**

**Data Profile, Variable, and Equity Intervention Selected for**

Data Variable	Equity Intervention
	BI-2 PROVIDE TAN
If applicable, student achievement area of focus	Click HERE
If applicable, grade level spans of focus	
Indicate subgroup focus	ECONOM

**Required Analysis:** Using the State Longitudinal Data System (SLDS), LEAs must briefly analyze the data variable selected for focus this fiscal year. LEAs MUST focus on gaps that impact high poverty and/or high minority schools. Gaps may exist between GA data and LEA data, LEA high and low poverty schools and/or LEA high and low minority schools. LEAs without gaps should select areas for continuous improvement.

FCS School Principal Retention: Leader retention has increased as a district. The SL dashboard shows 67% in FY16, 68% in FY17, and 69% in FY18. A gap still exists between high poverty and Title I schools will have a new principal. We have a different school or new position.

**Describe how the Equity Intervention will be 1) implemented, 2) monitored, and 3) measured for effectiveness.**  
(Please add a new row for each activity.)

Describe the intervention ACTIVITIES/STRATEGIES the LEA will implement to address Equity Gap #1.	Data to be collected to monitor the IMPLEMENTATION of intervention activities/strategies for Equity Gap #1.	Data to be collected to measure the EFFECTIVENESS of intervention activities/strategies in reducing Equity Gap #1.	DETAILED DESCRIPTION OF THE INTERVENTION
1 - Targeted principal training and support in the areas of equity, equity coaching.	Agendas from principals meetings and AP meetings	LAPS data to measure principal effectiveness	Title I principal



## Foster Care Transportation Plan

**FY20 Foster Care Transportation Plan**

**Local Educational Agency (LEA) Fulton County Schools**

**Superintendent Name** Cheryl Lee Danner

**Mailing Address** 4501 Perimeter Park Road

**Physical Address (if different from above)** Same

**City** Atlanta **Zip** 30328

**Foster Care Point of Contact (POC) Name** Juliana Calverley **POC Email** jcalverley@fultonschools.org

**POC Mailing Address** McClure High School 3601 Main Street

**City** College Park **Zip** 30037

**POC Telephone** 478-254-2475 **POC Fax** 478-254-2468

**Superintendent Signature** \_\_\_\_\_ **Date** \_\_\_\_\_

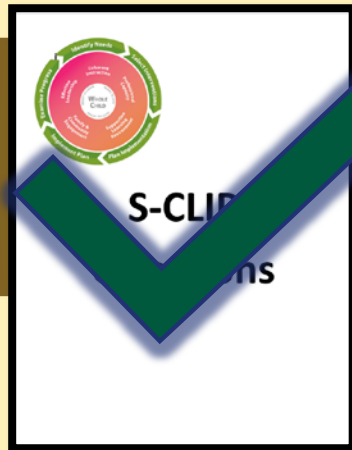
**Print Name of Superintendent** \_\_\_\_\_

Plan to measure indicators of equity across the district such as:

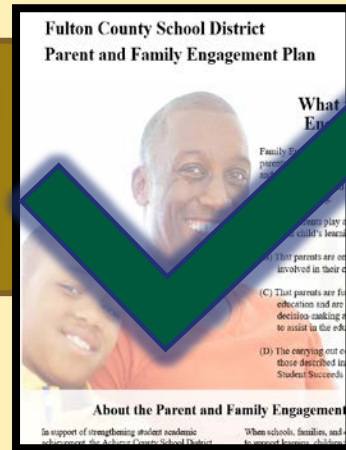
- Academic achievement
- Teacher and principal retention
- Discipline data

Plan to ensure McKinney-Vento transportation is provided to students in foster care when needed.

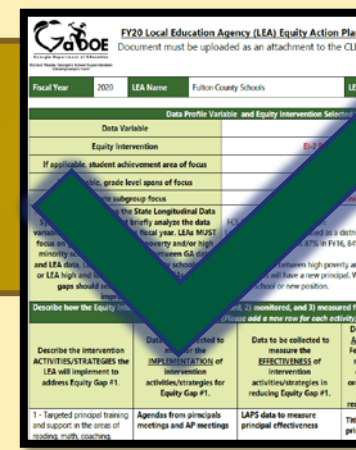
## S-CLIP Questions



## Parent and Family Engagement Plan



## Equity Action Plan



## Foster Care Transportation Plan





## Federal Programs Fulton Receives



- ☒ Title I
- ☒ Title II
- ☒ Title III
- ☒ Title IV,

- ☒ 1003a
- ☒ Title VIB (IDEA)
- ☒ McKinney-Vento





## What is Title I?

- A Federal Program that provides supplemental funds to districts to assist schools with the highest student concentrations of economic hardship.
- Intended to help students meet state goals.







## How is Title I Used?

Schools

- Additional teachers
- Additional instructional coaches
- Parent Liaisons
- Professional Learning
- Instructional Materials
- Books, computers, software
- Family Engagement

District

- Budget and program support for schools
- Training and support for Coaches
- Homeless/Foster
- Family Engagement
- Technology





## What is Title II?

Intended to provide supplemental activities that strengthen the quality and effectiveness of teachers, principals, and other school leaders. The purpose of Title II is to:

- Increase student achievement consistent with state standards
- Improve the quality and effectiveness of teachers, principals, and other school leaders





## How are Title II Funds Used?

# HOW ARE TITLE II FUNDS USED?



- District professional learning:
  - Reading
  - Math
  - Leadership
  - Staff quality



## What is Title III?

Supplemental language instruction for Immigrants and English Learners (ELs) needing support beyond the core, OCR-required state funded ESOL program. This support is designed to help ensure ELs attain English proficiency and meet state academic standards.



An EL is an individual who:

1. Is aged 3 through 21;
2. Is enrolled or preparing to enroll in elementary or secondary school;
3. Has a native language other than English aligned to the specific criteria, ESEA Section 8101(20), that would deny an individual access to:
  - Meet challenging State academic standards
  - Successfully achieve in classrooms where the language of instruction is English; or
  - An opportunity to participate fully in society



## How Are Title III Funds Used?

# HOW ARE TITLE III FUNDS USED?

Literacy  
software for  
English Learners

Family  
Engagement  
Activities

Professional  
Development



## What is Title IV?

Intended to improve students' academic achievement by increasing the capacity of States, LEAs, schools, and local communities to:



- provide all students with access to a well-rounded education
- improve school conditions for student learning (safe and healthy schools)
- improve the use of technology in order to improve the academic achievement and digital literacy of all students





## How are Title IV Funds Used?

# HOW ARE TITLE IV FUNDS USED?

- Materials and training for instructional staff in the areas
  - Art
  - Music
  - PE
  - STEM
  - World Languages
- Mental health and behavior support in schools
- Teacher learning in the area of technology integration
- PBIS Initiative





## What is 1003a?

1003 a is a school improvement grant for schools on a:

- Comprehensive Support and Improvement (CSI)
- Targeted Support and Improvement (TSI),
- Promise List based on CCRPI scores or graduation rate
- Intended to increase student achievement and instructional quality





## How Are 1003a Funds Used?

# HOW ARE 1003a FUNDS USED?

- Intervention teachers in reading and math
- Instructional training for teachers
- Instructional Paraprofessionals
- Graduation coaches
- Computers
- Supplemental materials for teachers and students  
(books, reading kits, math materials)





## What is Title VI-B (IDEA)?

### Title VI-B (IDEA) :



- Requires that schools and districts provide a free appropriate public education (FAPE)
- Ensures special education and related services are provided to students with disabilities
- Provides services to children ages 3-21



## How Are Title VI-B (IDEA) Funds Used?

# HOW ARE TITLE IV-B FUNDS USED?

## TITLE VIB FY22 FISCAL FORECAST:

**~\$17,582,002.00**

- *100% of Federal Funds directly fund personnel salary and benefits that support students in our schools.*
- *Title VIB Federal Funds account for 11% of the SEC Budget (personnel and non-personnel)*



- Fund Special Ed Teachers & Paras, Special Ed Admin Staff, Interpreters, Special Ed Nurses, SDI Coaches, Behavior Interventionists



## What is McKinney-Vento?

Supports the academic success of students experiencing homelessness

Removes barriers to:

- Enrollment
- Attendance
- School participation
- Engagement







## What Are McKinney-Vento Funds Used?

# HOW ARE MCKINNEY- VENTO FUNDS USED?

- School supplies
- Clothing/uniforms
- Hygiene items
- Afterschool care
- Tutoring
- Medical fees
- Credit recovery costs
- Graduation costs
- Transportation costs
- Community Referrals – resources for housing, food, utility support, medical support



# Questions

Any Questions?






# Survey Guidance





## Feedback Form



The results of this survey will be used in the creation and revision of the Plan. We value the feedback you provide, and are requesting you

English

English

Español (América Latina)

- **After clicking the link, use the arrow to select a different language.**





## Feedback Form

Please indicate who you are.

I am a teacher in Fulton County Schools.

I am a staff member at a Fulton County School.

I am a parent in Fulton County Schools.

I am both a parent and teacher in Fulton County Schools.

I am a community member.



- **Select the correct role from the choices.**
- **Next, select the green arrow.**



## Feedback Form

- The bold heading is the topic of how to spend the funds.
- Select 3 choices.



**Coherent Instruction:** Which of these things to you think is the most important for Federal Programs to spend our funds on? Please select the top three choices.

Online Programs

Teacher Training

Instructional Materials

PBIS

Extended Time

Additional Teachers

Additional Coaches

Additional Paraprofessionals

Additional Behavior Specialist

Tutoring

Technology

Social Emotional Learning



**Please provide feedback** for District Input on the S-CLIP and how to spend funds.

Provide feedback at  
<http://bit.ly/District Input>





**Thank you for attending.**

**We appreciate your  
partnership to ensure our  
Title Programs meet the  
needs of all stakeholders.**





**END**