



North Fulton Redistricting

Round Three – Fall 2022

Presented by: Yngrid Jones-Huff
Deputy Chief Operations Officer



Agenda for Tonight's Meeting

- Review purpose of redistricting
- Review Policy AD - School Attendance Zones
- Review redistricting procedure
- Review draft plan
- Room assignment
- Small group facilitation



Why redistrict attendance boundaries?

- Enrollment and capacity imbalances in North Fulton elementary and middle schools
- Opening of Crabapple Middle replacement school
- School feeder alignment



Policy AD – School Attendance Zones

- Passed in September 2000
- Defines primary and secondary criteria
- Establishes a procedure for revising school attendance zones
- Used in the planning and opening of 40+ new and replacement schools and three (3) school closures

Primary criteria - based on data and logistics

- Geographic proximity
- Projected enrollment
- Capacity



Students are not always assigned to their closest school – all three criteria must be considered, and all students must be assigned

Secondary criteria - used when primary criteria offer more than one option for assignment

- Traffic patterns
- Frequency of neighborhood rezonings
- School feeder alignment
- Balancing of special programs
(i.e., TAG, ESOL, Special Needs)



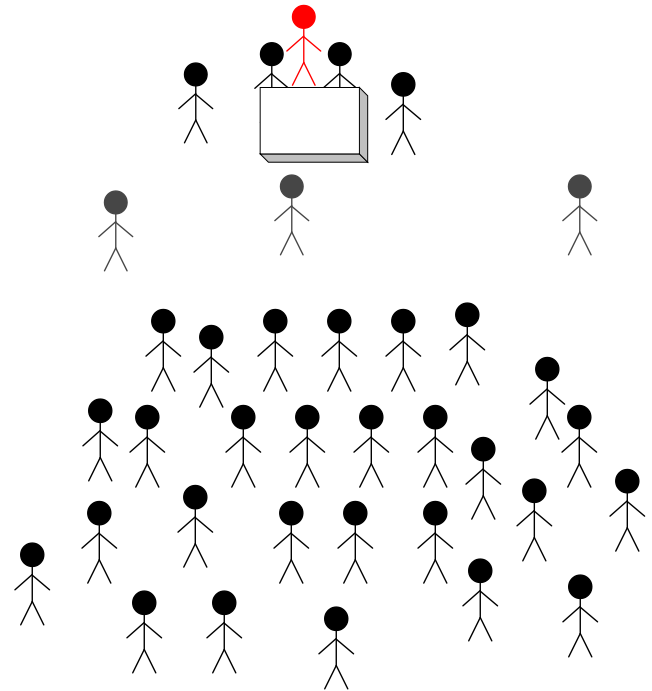
Procedure AD – Attendance Zones

- Neighborhood study areas are the building blocks of attendance boundaries
- Future schools will be considered
 - Forward looking
 - Minimize the continuous shifting of neighborhoods
- Gather community feedback on secondary criteria to inform attendance boundary planning

Procedure AD – Attendance Zones

Community Engagement

- ▶ Everyone participates equally
- ▶ All forums begin with a presentation
- ▶ Ensures continuity in the process
- ▶ Divided into smaller working groups
- ▶ Groups facilitated by trained staff
- ▶ Equity in the process
- ▶ Focused discussion on criteria



- **Round One – Community Forum**
 - Objective: Collected community input within the board-approved criteria
 - Held on September 12, 2022
- **Round Two – Community Forum**
 - Objective: Collect community input on attendance zone alternatives based on board-approved criteria
 - October 3, 2022
- **Round Three – Community Forum**
 - Objective: Collect community input on the attendance zone draft plan based on board-approved criteria
 - October 18, 2022

Process – Ground Rules

- Facilitators are objective participants
- Can only consider input related to the criteria
- School system commits to receiving and considering all appropriate input
- Staff must balance multiple perspectives and logistical limitations in developing plans, not all input can be accommodated
- Respect each others' opinions
- Please use QR code in classroom to submit questions



After Round 3 - Redistricting

- Analyze Round 3 community feedback
 - Meeting comments
 - Online comments
- Develop a final recommendation in consultation with Operations and Academics leadership teams



Final Recommendation

- Board will review staff recommendations for attendance zone modifications - November 2022
- Board receives community input based on the recommendation during November and December
- Board selects or adjusts attendance zone recommendation
- Board approves final attendance zones - December 14, 2022



Redistricting Notification/Options

- Approved attendance zone changes go into effect in **2023-2024 school year**
- Students impacted by redistricting **will be notified in early 2023** at beginning of second semester
- The following impacted students **can opt to stay** at their home school (*no transportation provided*)
 - Elementary: Rising 5th graders
 - Middle School: Rising 8th graders
 - High School: Rising 10th, 11th, and 12th graders

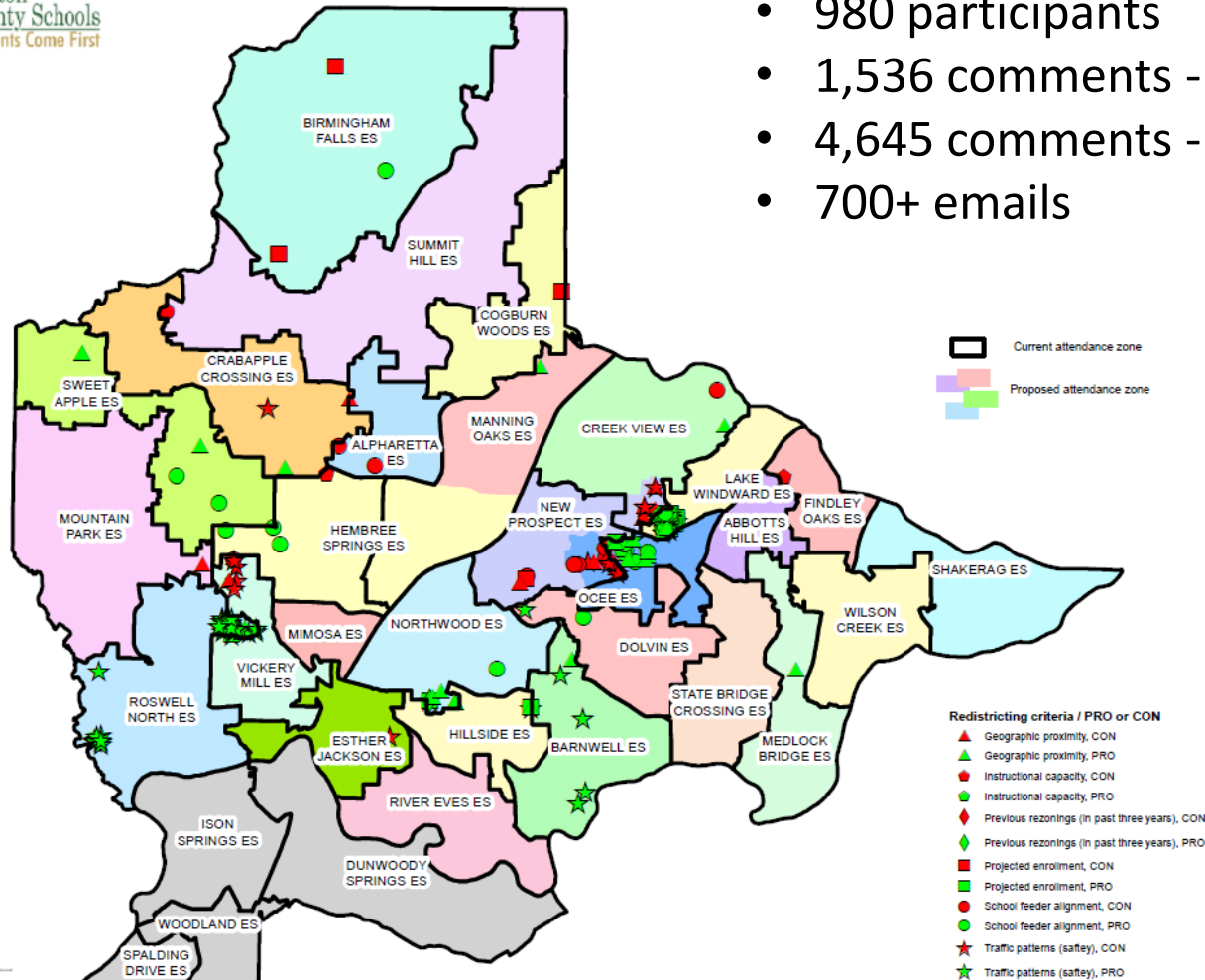
Attendance Zone Draft Plan

- Review community feedback
- Discussion of primary criteria
 - Overview of forecasting methodology
 - Plan development
 - Capacity
 - How to read the data tables
- Review of Draft Plan

Comments from Round Two

Round Two comments

- 980 participants
- 1,536 comments - meeting
- 4,645 comments - online
- 700+ emails



Community Feedback – Meeting vs Online

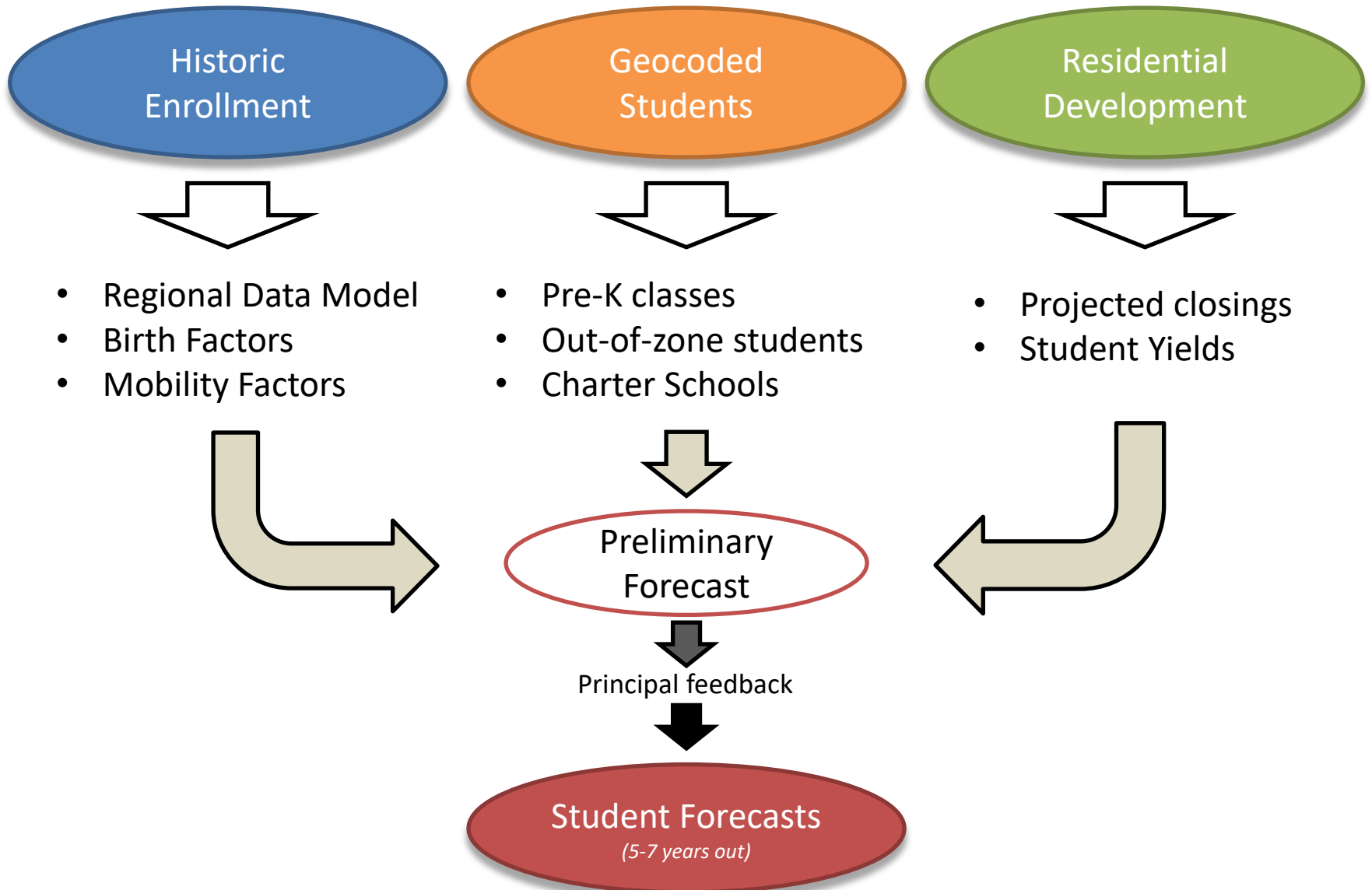
Meeting Comments are:

- Collected by trained facilitators
- Directly related to the board-approved criteria
- Reviewed for appropriateness
- Published online
- Geocoded and analyzed
- Provided to the Board of Education

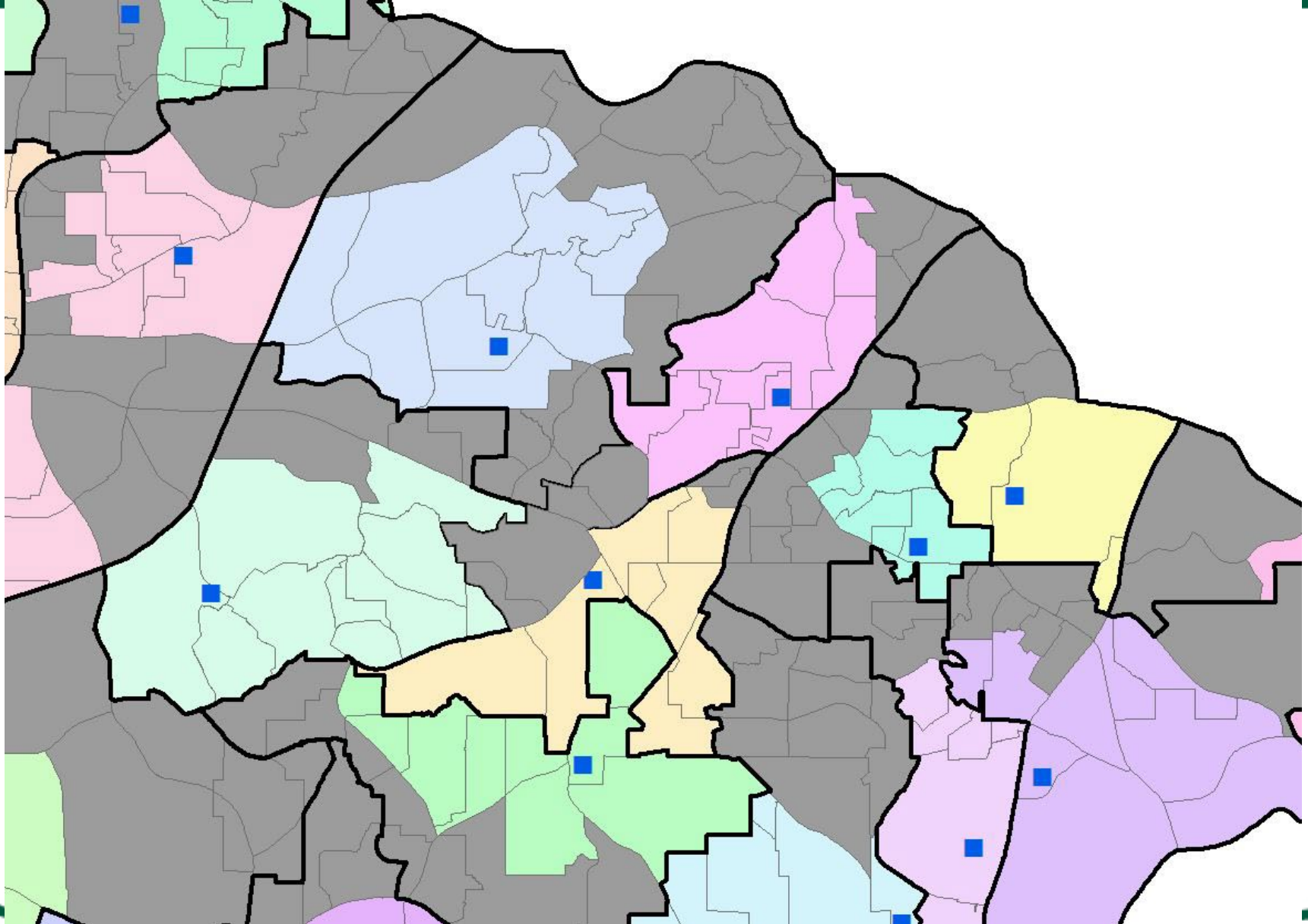
Online Comments are:

- Entered by user
- Not necessarily directly related to the criteria
- **NOT** reviewed for appropriateness
- **NOT** published online
- Geocoded and analyzed
- Often duplicative – form letters, emails
- Provided to the Board of Education

FCS Forecast Methodology

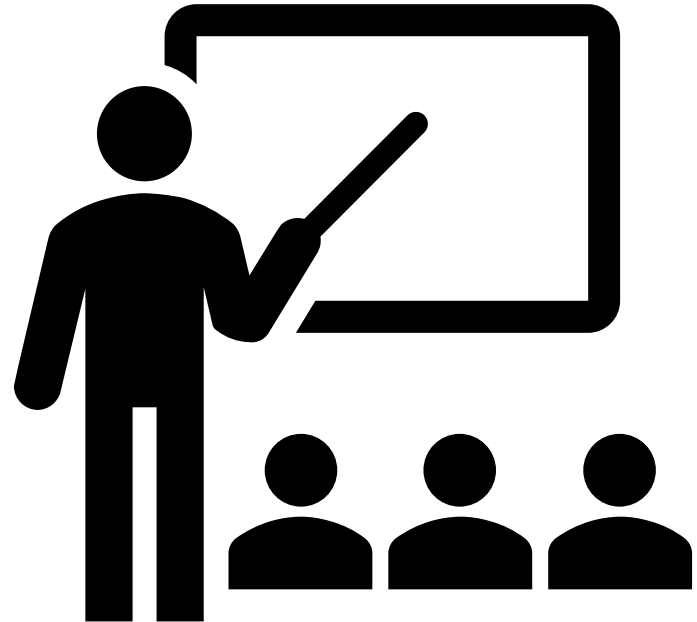


Forecast and Plan Development



Elementary and Middle School Capacity – Classroom Space

- Number of classrooms in each building
- Projected enrollment
- Student-to-teacher ratio
- Special programs (i.e., TAG, ESOL, Special Needs)



High School capacity is based on GADOE State Capacity

Data Tables – Forecast and Capacity

CURRENT

School	GADOE FTE	2022-23		2023-24		2024-25		2025-26	
		Enrolled	# CR Need Less Bldg.	Projected	# CR Need Less Bldg.	Projected	# CR Need Less Bldg.	Projected	# CR Need Less Bldg.
ABBOTTS HILL ES	850	564	-11	584	-10	570	-9	581	-9
ALPHARETTA ES	900	557	-7	549	-13	555	-13	555	-12
BARNWELL ES	850	716	-2	753	-1	825	3	829	5
BIRMINGHAM FALLS ES	850	758	-6	765	-5	764	-4	802	-2
COGBURN WOODS ES	850	741	-6	730	-8	716	-8	679	-8
CRABAPPLE CROSSING ES	800	649	5	637	6	602	-8	614	-7
CREEK VIEW ES	850	986	4	1,016	8	1,022	10	1,029	9
DOLVIN ES	1,050	727	-14	729	-14	740	-14	734	-13
FINDLEY OAKS ES	875	591	-8	598	-8	618	-7	629	-7
HEMBREE SPRINGS ES	850	511	-14	490	-15	481	-14	484	-14
HILLSIDE ES	850	531	-8	520	-8	545	-7	530	-7
JACKSON, ESTHER ES	925	529	-11	533	-11	523	-13	518	-12
LAKE WINDWARD ES	875	706	0	670	-4	661	-4	668	-3
MANNING OAKS ES	850	741	-2	776	2	782	3	799	4
MEDLOCK BRIDGE ES	825	620	-5	620	-5	610	-5	592	-6
MIMOSA ES	1,000	652	-18	620	-17	597	-18	571	-21
MOUNTAIN PARK ES	1,000	786	-9	756	-9	736	-10	724	-10
NEW PROSPECT ES	825	494	-8	456	-9	444	-10	450	-8
NORTHWOOD ES	800	641	0	618	-1	614	-3	627	-2
OCEE ES	850	613	-9	579	-11	556	-12	543	-12
RIVER EVES ES	775	555	-8	569	-8	578	-7	582	-8
ROSWELL NORTH ES	1,000	864	-12	833	-13	836	-13	811	-14
SHAKERAG ES	875	648	-9	672	-7	688	-7	700	-6

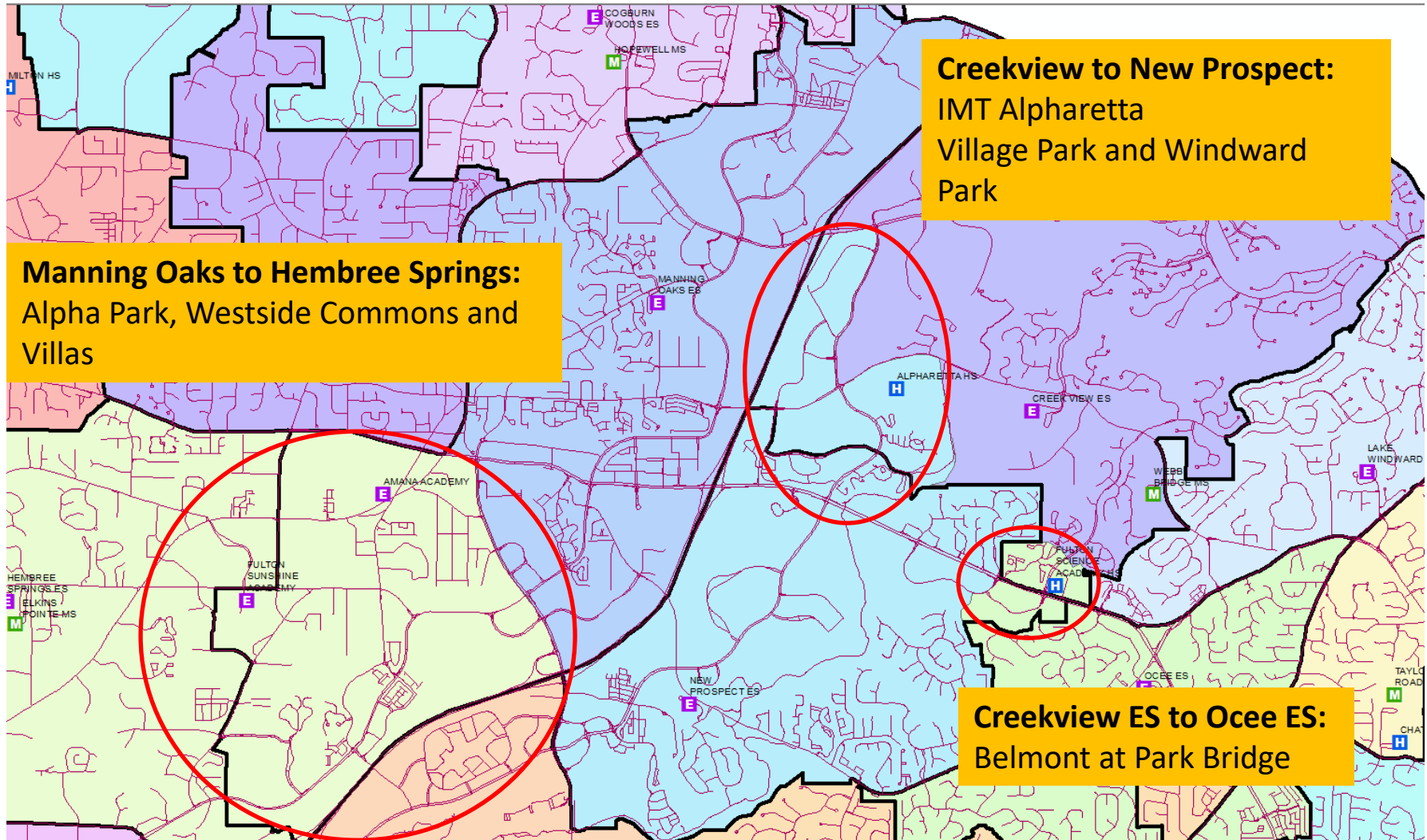
Data Tables – Forecast and Capacity

DRAFT PLAN

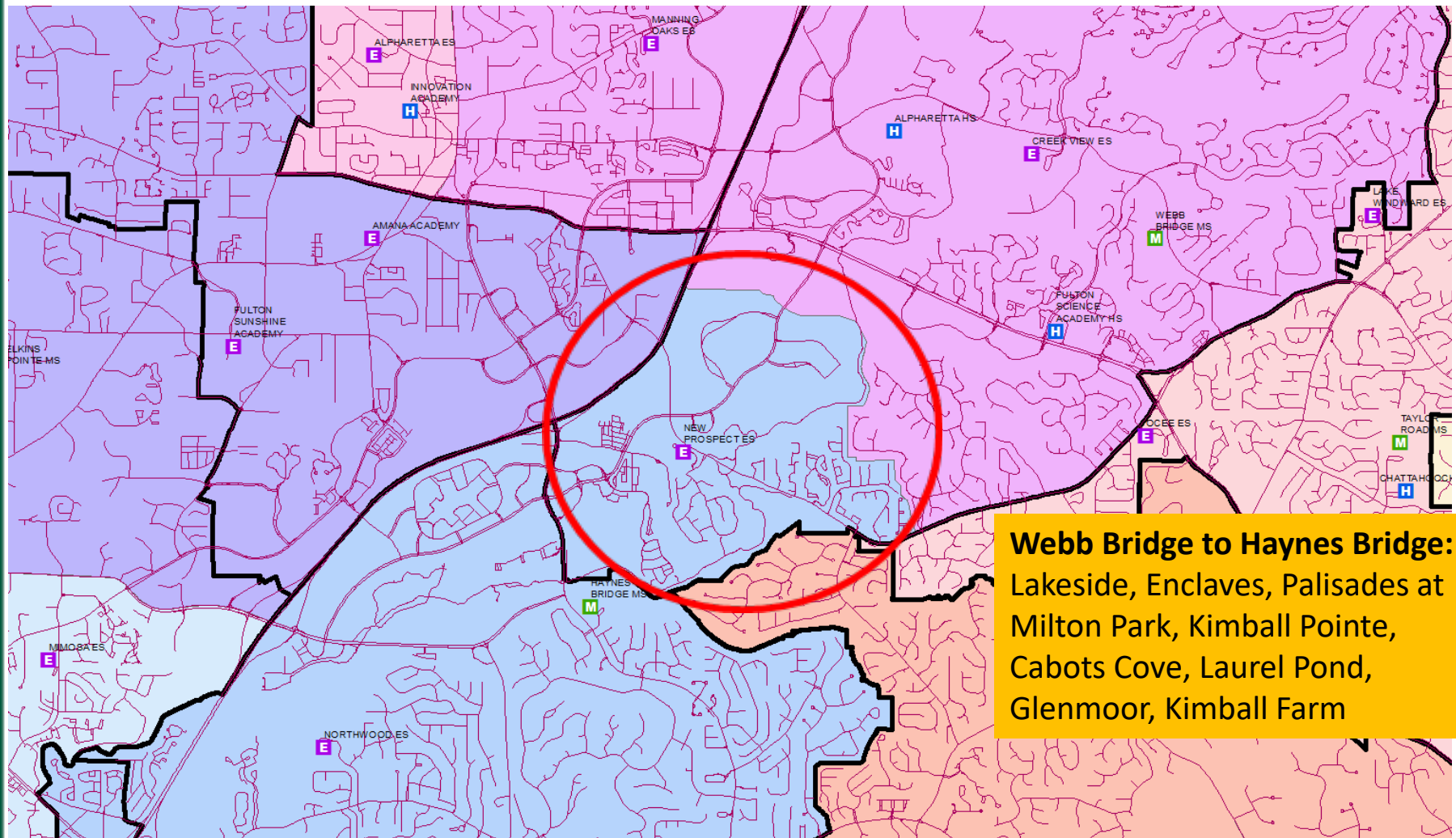
School	GADOE FTE	2022-23		2023-24		2024-25		2025-26	
		Enrolled	# CR Need Less Bldg.	Projected	# CR Need Less Bldg.	Projected	# CR Need Less Bldg.	Projected	# CR Need Less Bldg.
ABBOTTS HILL ES	850	564	-11	584	-10	570	-9	581	-9
ALPHARETTA ES	900	557	-7	549	-13	555	-13	555	-12
BARNWELL ES	850	716	-2	753	-1	825	3	829	5
BIRMINGHAM FALLS ES	850	758	-6	765	-5	764	-4	802	-2
COGBURN WOODS ES	850	741	-6	730	-8	716	-8	679	-8
CRABAPPLE CROSSING ES	888	649	-5	637	-8	662	8	614	-7
CREEK VIEW ES	850	986	4	775	-1	779	-1	782	0
DOLVIN ES	1,050	727	-14	729	-14	740	-14	734	-13
FINDLEY OAKS ES	875	591	-8	598	-8	618	-7	629	-7
HEMBREE SPRINGS ES	850	511	-14	580	-12	566	-13	568	-11
HILLSIDE ES	850	531	-8	520	-8	545	-7	530	-7
JACKSON, ESTHER ES	925	529	-11	533	-11	523	-13	518	-12
LAKE WINDWARD ES	875	706	0	670	-4	661	-4	668	-3
MANNING OAKS ES	850	741	-2	685	1	696	0	714	1
MEDLOCK BRIDGE ES	825	620	-5	620	-5	610	-5	592	-6
MIMOSA ES	1,000	652	-18	620	-17	597	-18	571	-21
MOUNTAIN PARK ES	1,000	786	-9	756	-9	736	-10	724	-10
NEW PROSPECT ES	825	494	-8	602	-2	582	-4	584	-3
NORTHWOOD ES	800	641	0	618	-1	614	-3	627	-2
OCEE ES	850	613	-9	675	-6	662	-7	657	-7
RIVER EVES ES	775	555	-8	569	-8	578	-7	582	-8
ROSWELL NORTH ES	1,000	864	-12	833	-13	836	-13	811	-14
SHAKERAG ES	875	648	-9	672	-7	688	-7	700	-6
STATE BRIDGE CROSSING ES	800	684	-5	668	-4	656	-4	644	-5
SUMMIT HILL ES	850	706	-3	699	-5	702	-4	709	-3
SWEET APPLE ES	950	801	-2	800	-1	800	-2	801	-2
VICKERY MILL ES	850	436	-9	433	-9	418	-10	410	-9
WILSON CREEK ES	850	785	-5	790	-6	802	-5	811	-3
ES TOTAL	24,475	18,592	-192	18,463	-193	18,441	-197	18,426	-184

Draft Plan- North Fulton

Draft Plan - Elementary

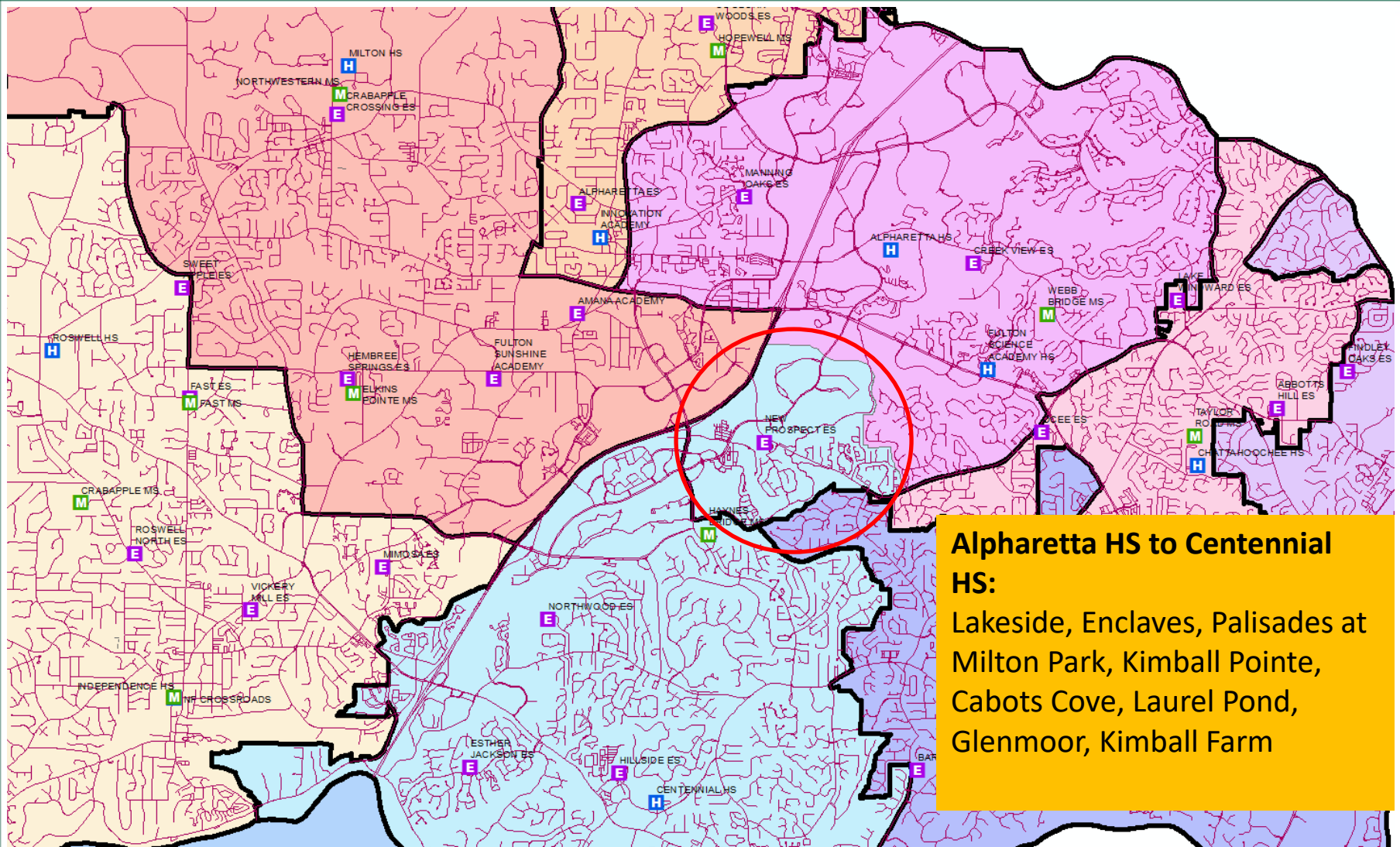


Draft Plan- Middle



Webb Bridge to Haynes Bridge:
Lakeside, Enclaves, Palisades at
Milton Park, Kimball Pointe,
Cabots Cove, Laurel Pond,
Glenmoor, Kimball Farm

Draft Plan- High



Meeting Objective - Collect community input within the board-approved criteria

What are the pros/cons of the Draft Plan?

Operational Planning Redistricting website

- Public record
- Information and video of the process
- FAQ and Q&A
- Online community forum - available until Wednesday, October 19, 2022 at 11:59pm



QR code to
FCS Redistricting website

www.fultonschools.org/redistricting

Thank you for coming!

**Please refer to your agenda for your
room assignment**

**Final Recommendation
Board Work Session
November 8, 2022**

Important Note

English

If you need this information in a different language, please send an email to districtlanguageassistance@fultonschools.org.

Spanish

Si usted necesita esta información en algún otro idioma por favor mande un email a: districtlanguageassistance@fultonschools.org.

Chinese 中文

如果您需要此信息的其他语言，请发送电子邮件至 districtlanguageassistance@fultonschools.org.

Korean 한국어

다른 언어로 이 정보가 필요하신 분은, districtlanguageassistance@fultonschools.org 로 이메일을 보내주세요.

Hindi

यदि आपको किसी अन्य भाषा पर यह जानकारी चाहिए, तो कृपया एक ईमेल भेजें districtlanguageassistance@fultonschools.org.

Portuguese

Caso necessite desta informação em uma língua diferente, por favor envie um e-mail para districtlanguageassistance@fultonschools.org.

Arabic

إلى إلكتروني بريد إرسال يرجى ، مختلفة بلغة المعلومات هذه إلى بحاجة كنتم إذا districtlanguageassistance@fultonschools.org.