



North Fulton Redistricting

Round One – Fall 2022

Presented by: Yngrid Jones-Huff
Deputy Chief Operations Officer

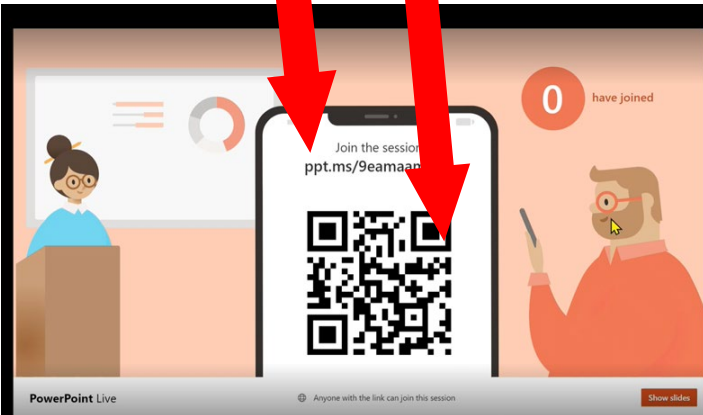
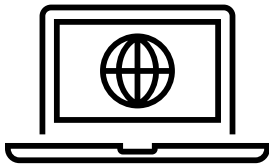


Translation Assistance for Redistricting Meetings

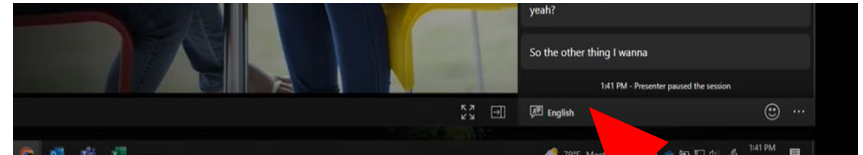
NOTE: Please note that just before the meeting officially starts, we will be helping participants who speak a language other than English learn how to turn on translation services using their computer/smartphone.

TO TRANSLATE IN YOUR LANGUAGE Para traducir en tu idioma Para traduzir em seu idioma
귀하의 언어로 번역하려면 翻译成您的语言 अपनी भाषा में अनुवाद करने के लिए

1



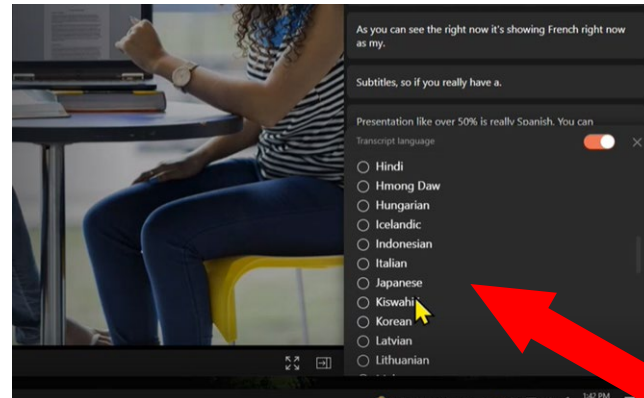
2



Click



3



Agenda for Tonight's Meeting

- Review purpose of redistricting
- Review Policy AD - School Attendance Zones
- Review redistricting procedure
- Room assignment
- Small group facilitation



Why redistrict attendance boundaries?

- Enrollment and capacity imbalances in North Fulton elementary schools
- Opening of Crabapple Middle replacement school
- School feeder alignment



Policy AD – School Attendance Zones

- Passed in September 2000
- Defines primary and secondary criteria
- Establishes a procedure for revising school attendance zones
- Used in the planning and opening of 40+ new and replacement schools and three (3) school closures

Primary criteria - based on data and logistics

- Geographic proximity
- Projected enrollment
- Capacity



(Students are not always assigned to their closest school – all three criteria must be considered and all students must be assigned.)

Secondary criteria - used when primary criteria offer more than one option for assignment

- Traffic patterns
- Frequency of neighborhood rezonings
- School feeder alignment
- Balancing of special programs
(i.e., TAG, ESOL, Special Needs)

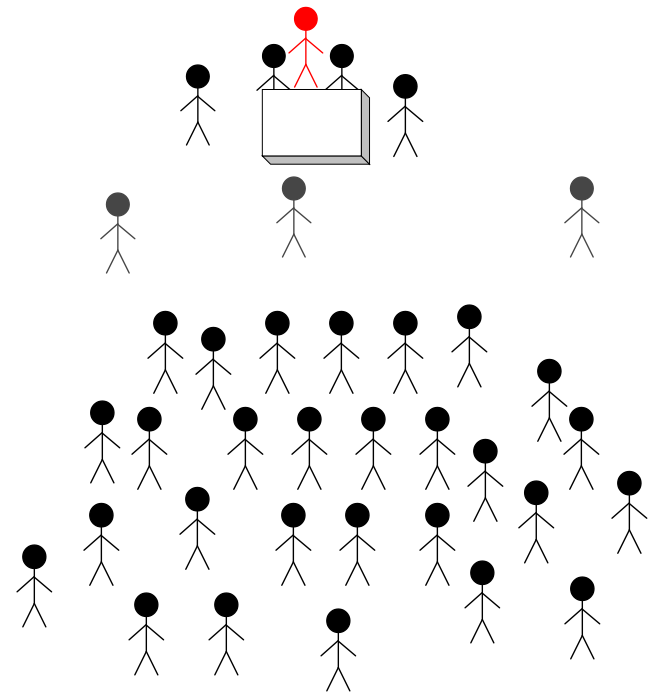


Procedure AD – Attendance Zones

- Neighborhood study areas are the building blocks of attendance boundaries
- Future schools will be considered
 - Forward looking
 - Minimize the continuous shifting of neighborhoods
- Gather community feedback on secondary criteria to inform attendance boundary planning

Community Engagement

- ▶ Everyone participates equally
- ▶ All forums begin with a presentation
- ▶ Ensures continuity in the process
- ▶ Divided into smaller working groups
- ▶ Groups facilitated by trained staff
- ▶ Equity in the process
- ▶ Focused discussion on criteria



Process – Ground Rules

- Facilitators are objective participants
- Can only consider input related to the criteria
- School system commits to receiving and considering all appropriate input
- Staff must balance multiple perspectives and logistical limitations in developing plans, not all input can be accommodated
- Respect each others' opinions
- Please use QR code in classroom to submit questions



Round 1 Questions – Redistricting

1. In terms of factors such as natural geographic barriers, homeowners' associations, and shared amenities such as common areas, youth teams or events, what neighborhood areas should remain together and why?
2. What traffic concerns do you have that may impact the safe and timely transportation of students to and from schools?
3. Are there any residential development trends or redevelopments in your area that may impact future school enrollment?
4. Have there been issue regarding multiple school rezonings in your area?

- Analyze Round 1 community feedback
 - Meeting comments
 - Online comments
- Develop revised enrollment projections
- Develop alternative plan maps for Round 2 meeting in consultation with Operations and Academics leadership teams



Final Recommendation

- Board will review staff recommendations for attendance zone modifications - November 2022
- Board receives community input based on the recommendation during November and December
- Board selects or adjusts attendance zone recommendation
- Board approves final attendance zones - December 15, 2022



Redistricting Notification/Options

- Approved attendance zone changes go into effect in **2023-2024 school year**
- Students impacted by redistricting **will be notified in early 2023** at beginning of second semester
- The following impacted students **can opt to stay** at their home school (*no transportation provided*)
 - Elementary: Rising 5th graders
 - Middle School: Rising 8th graders
 - High School: Rising 10th, 11th, and 12th graders

Operational Planning Redistricting website

- Public record
- Information and video of the process
- FAQ and Q&A
- Online community forum - available until Tuesday, September 13, 2022 at 11:59pm



QR code to
FCS Redistricting website

www.fultonschools.org/redistricting

Thank you for coming!

**Please refer to your agenda for your
room assignment**

**Next Meeting - Round 2
October 3, 2022
6-8pm – Alpharetta HS**