The background is a solid purple color. Four hands are positioned around the central text, each holding a large puzzle piece. The top-left hand is light-skinned with a yellow sleeve, holding a red puzzle piece. The top-right hand is light-skinned with a blue sleeve, holding a green puzzle piece. The bottom-left hand is dark-skinned with a red sleeve, holding a blue puzzle piece. The bottom-right hand is light-skinned with a green sleeve, holding a yellow puzzle piece. The puzzle pieces are arranged in a square pattern around the central text.

GMAS NACHO WORRY

February 20, 2024
5:30pm

EWMA GMAS Data

ELA 2022-2023

	6th grade	7th grade	8th grade
Beginning	47%	46%	35%
Developing	31%	33%	43%
Proficient	20%	19%	21%
Distinguished	2%	1%	1%
% Levels 3 & 4	22%	20%	22%
Expected Growth	30%	28%	30%

EWMA Lexile Distribution

6th grade

7th grade

8th grade

Above the Stretch Band (Above 1070L)	16%
Within the Stretch Band (925L-1070L)	22%
Below the Stretch Band (Below 925L)	62%

Above the Stretch Band (Above 1120L)	29%
Within the Stretch Band (970L-1120L)	24%
Below the Stretch Band (Below 970L)	47%

Above the Stretch Band (Above 1185L)	24%
Within the Stretch Band (1010L-1185L)	34%
Below the Stretch Band (Below 1010L)	43%

EWMA GMAS Data

Math 2022-2023

	6th grade	7th grade	8th grade	Algebra 1
Beginning	56%	46%	60%	40%
Developing	37%	45%	34%	42%
Proficient	7%	8%	5%	15%
Distinguished	1%	1%	1%	4%
% Levels 3 & 4	8%	9%	6%	19%
Expected Growth	16%	17%	14%	27%



A Look Into the Contents



Content Leads

- Mrs. Perdue – English/Language Arts
- Ms. Innocent – Mathematics

English Language Arts



Reading is FUNdamental

The biggest way you can support your learner is to **read with them daily**.

Student who **read at least 20 minutes a day** saw improved test scores, growth in vocabulary, and has been showing to relieve stress.

Students are tested using a combination of **informational passages and literary passages**.

Examples of **Informational Text**: newspaper article, magazines, speeches or biographies

Examples of **Literary Text**: poetry and fictional stories



6th Grade Tested Domains

Reading and Vocabulary	Approximate % of Test = 53%
Key Ideas and Details	28%
Craft and Structure/Integration of Knowledge and Ideas	15%
Vocabulary Acquisition and Use	10%
Writing and Language	Approximate % of Test = 47%
Writing	27%
Language	20%

Depth of Knowledge

**35–45% of the
questions are
DOK Level 2.**

**25–35% of the
questions are
DOK Level 3.**

7th Grade Domains

Depth of Knowledge

35–45% of the questions are DOK Level 2.

25–35% of the questions are DOK Level 3.

Reading and Vocabulary	Approximate % of Test = 53%
Key Ideas and Details	27%
Craft and Structure/Integration of Knowledge and Ideas	16%
Vocabulary Acquisition and Use	6%
Writing and Language	Approximate % of Test = 47%
Writing	27%
Language	20%

8th Grade Domains

Reading and Vocabulary	Approximate % of Test = 53%
Key Ideas and Details	27%
Craft and Structure/Integration of Knowledge and Ideas	16%
Vocabulary Acquisition and Use	10%
Writing and Language	Approximate % of Test = 47%
Writing	27%
Language	20%

Depth of Knowledge

**35–45% of the
questions are
DOK Level 2.**

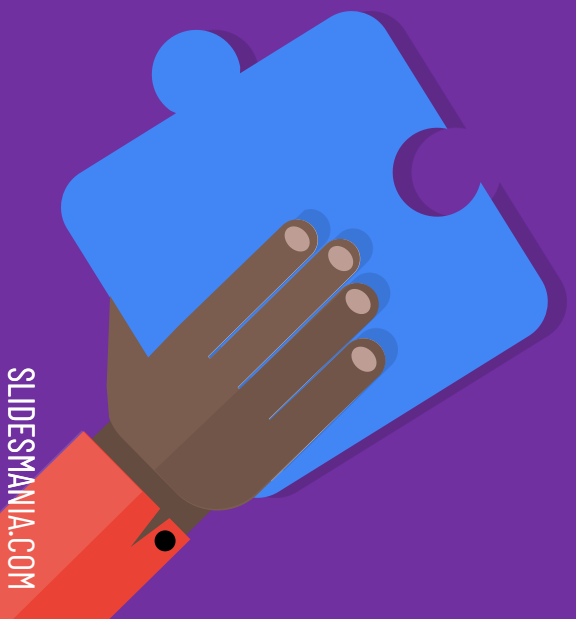
**25–35% of the
questions are
DOK Level 3.**

How can I support my child in ELA?

1. Read! Read! Read!
2. Make sure students are completing teacher assigned IReady and Ready lessons.
3. Ensure that students are keeping up with daily classroom assignments and homework.
4. If students are struggling, to ask their teacher questions.
5. Using Tutor.com/ ClassAct

Mathematics

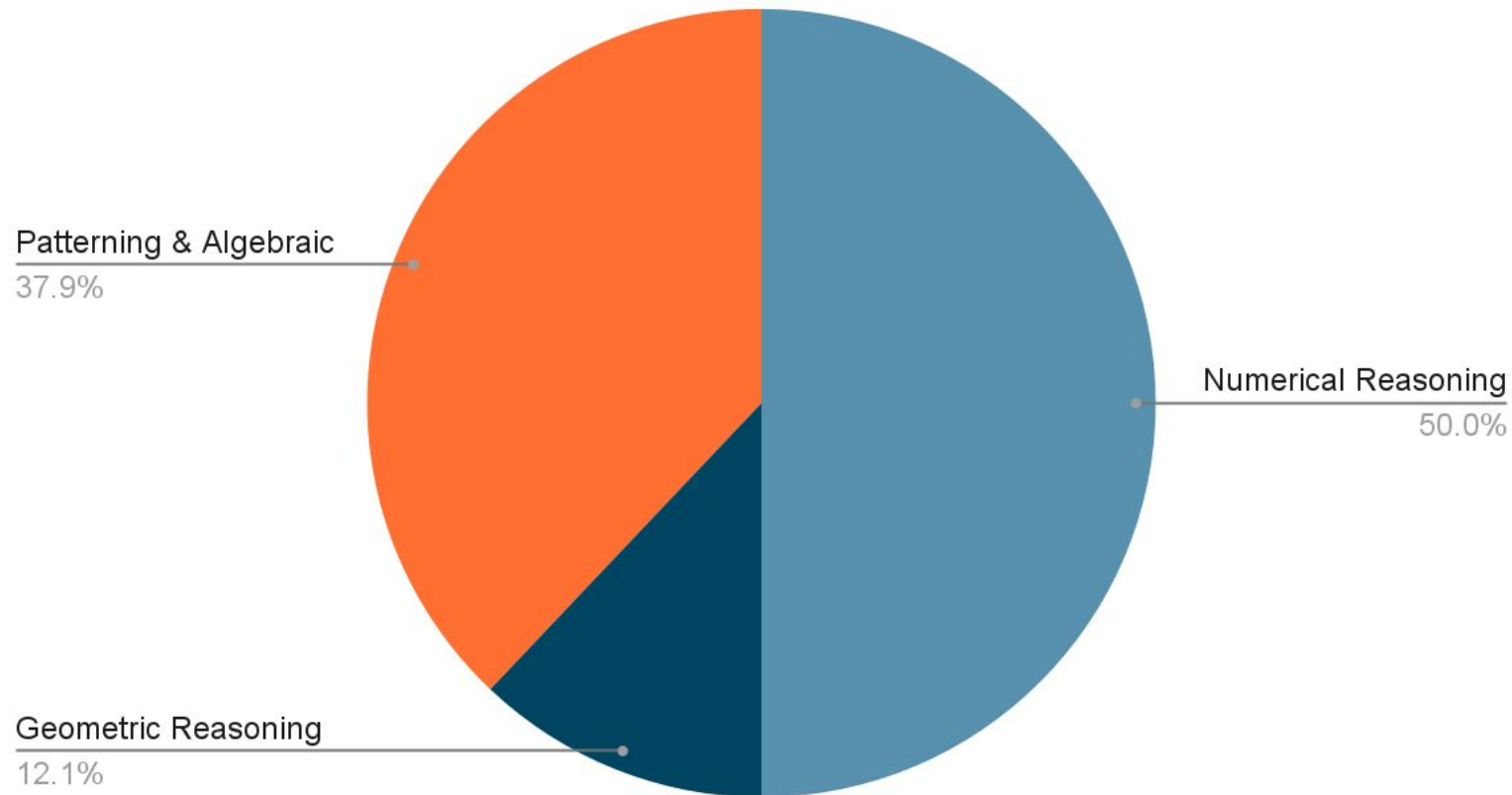
Grades 6–8



What's Important? | Assessment Blueprint

It's important to know what specific areas your scholar will be tested on and what type of questions they will see on the test:

6th Grade



What's Important? | Assessment Blueprint

It's important to know what specific areas your scholar will be tested on and what type of questions they will see on the test:

7th Grade

Probability Reasoning

15.5%

Numerical Reasoning

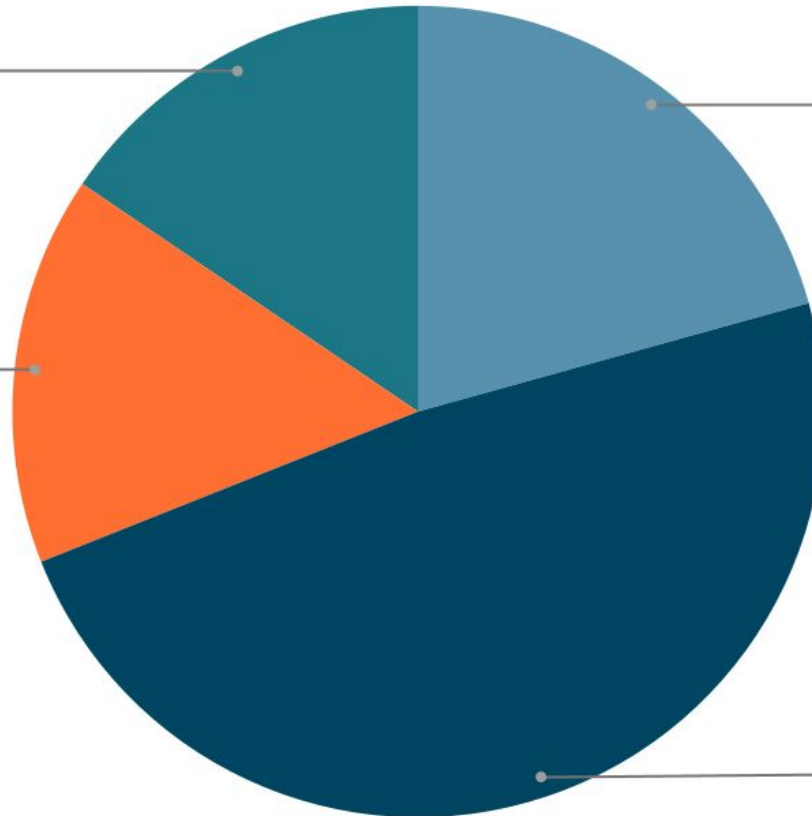
20.7%

Geometric & Spatial

15.5%

Patterning & Algebraic

48.3%



What's Important? | Assessment Blueprint

It's important to know what specific areas your scholar will be tested on and what type of questions they will see on the test:

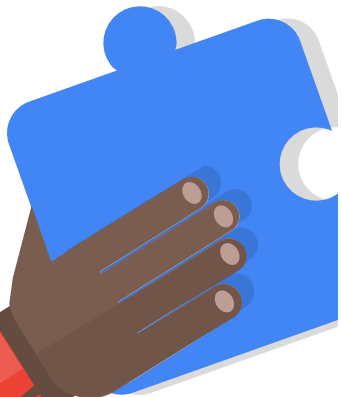
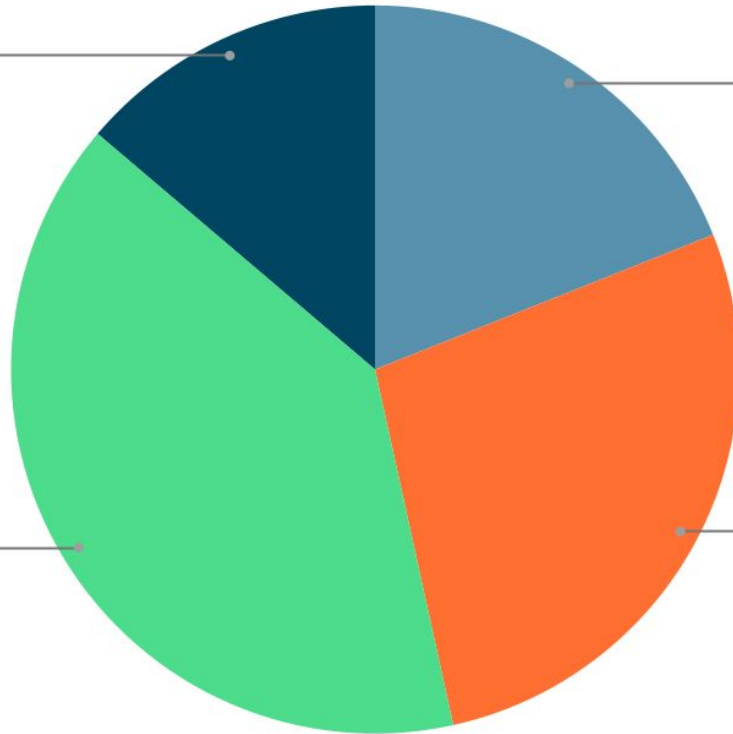
8th Grade

Geometric & Spatial
13.8%

Numerical Reasoning
19.0%

Functional & Graphical
39.7%

Patterning & Algebraic
27.6%



Essential Things to Know

- GMAS for middle grades is completely ONLINE.
- Most questions are technology enhanced.
- Students need experience working with Desmos Calculator (they utilize this in class)
- Students must have access to a CCPS issued device
 - Parents/Guardians please complete the 2 technology forms on the EWMA website

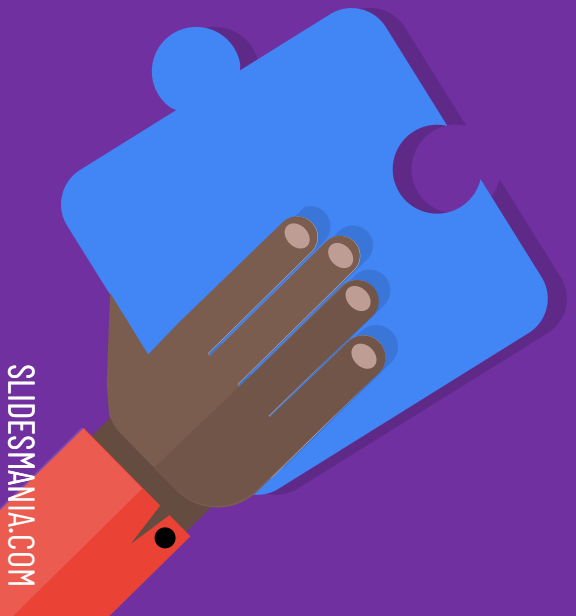


How Can I Support My Child in Math?

1. Have student complete the online study guides for their GMAS tested contents.
2. Make math relevant
 - a. Grocery shopping
 - b. Budgeting
 - c. Gas
3. Have your scholar 'teach' you what they are currently learning in class.



Social Studies



8th Grade Georgia Studies

Domain Weights		Depth of Knowledge	Approximate # of Points	Approximate % of Test
History	50%	Level 1	2 to 7	5% to 15%
Geography	15%	Level 2	30 to 25	65% to 75%
Government/Civics	20%	Level 3	7 to 12	15% to 25%
Economics	15%	Level 4	n/a	n/a

Most questions on the GMAS are DOK Level II. This requires students to know how to go beyond recall and Compare and contrast, identify cause and effect, convert information, and/or explain their answers.

6th and 7th Grade Social Studies

1. 6th and 7th Grade subjects are not tested
2. Parents and students can prepare for the 8th grade assessment by talking about the following topics with your students:
 - a. **Georgia Laws**
 - b. **State and Local Government**
 - c. **Economics:** Georgia Transportation & Entrepreneurship
 - d. **Take a Field Trip:** Learning about different Georgia locations and their history
 - i. Southern Museum of Civil War and Locomotive History in Kennesaw, Georgia
 - ii. Little White House in Warm Springs, Georgia
 - iii. Savannah
 - iv. Okefenokee Swamp



Parent's Keys to Success in Social Studies



→ Encourage Students to complete online Review Activities

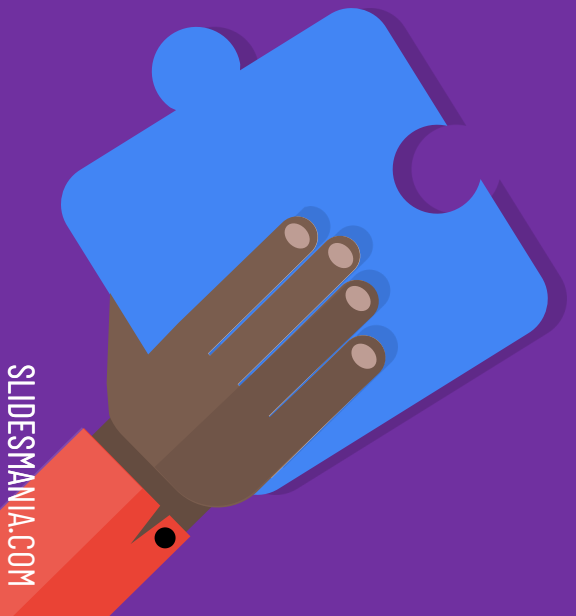
1. GMAS Practice Test on DRC insight
2. Review Games
3. Study guides
4. GaDOE resources
5. Canvas Resources



→ Talk to students about what they are learning in social studies

→ Talk to students about their local government and civic duties as a citizen of Georgia

8th Grade Physical Science



Physical Science

Reporting Category/Domain	Content Standards Assessed	Approximate # of Points	Approximate % of Test
Matter	S8P1 (a, b, c, d, e, f)	13	28%
Energy	S8P2 (a, b, c, d)	8	18%
Motion	S8P3 (a, b, c)	7	15%
Waves	S8P4 (a, b, c, d, e, f, g)	11	24%
Force	S8P5 (a, b, c)	7	15%
Total		46	100%

Physical Science

Depth of Knowledge

Depth of Knowledge (DOK) is measured on a scale of 1 to 4 and refers to the level of cognitive demand (different kinds of thinking) required to complete an assessment item. The following table shows the expectations of the four DOK levels on the End-of-Grade Science exam.

Depth of Knowledge	Approximate # of Points	Approximate % of Test
Level 1	2 to 7	5% to 15%
Level 2	25 to 30	55% to 65%
Level 3	12 to 16	25% to 35%
Level 4	N/A	N/A



Physical Science Real World

How Parents/guardians can assist with learning:

8th Grade

Physical Science → Connecting to how things work in the world

- Motion & Force – of an object, acceleration, mass, speed and velocity
- Energy – Conservation and transferring energy
- Waves – Frequency, amplitude, mediums, radio to gamma
- Matter – Structure, properties, types of reaction

ADI – Know components of a lab report

ASK them questions! discuss science with them!

Read their science notebooks



QUESTIONS?



Thank you!





Add your title here.

If you are presenting a website,
an internet product or an app,
you can place a screenshot of it
here.





Add your title here.

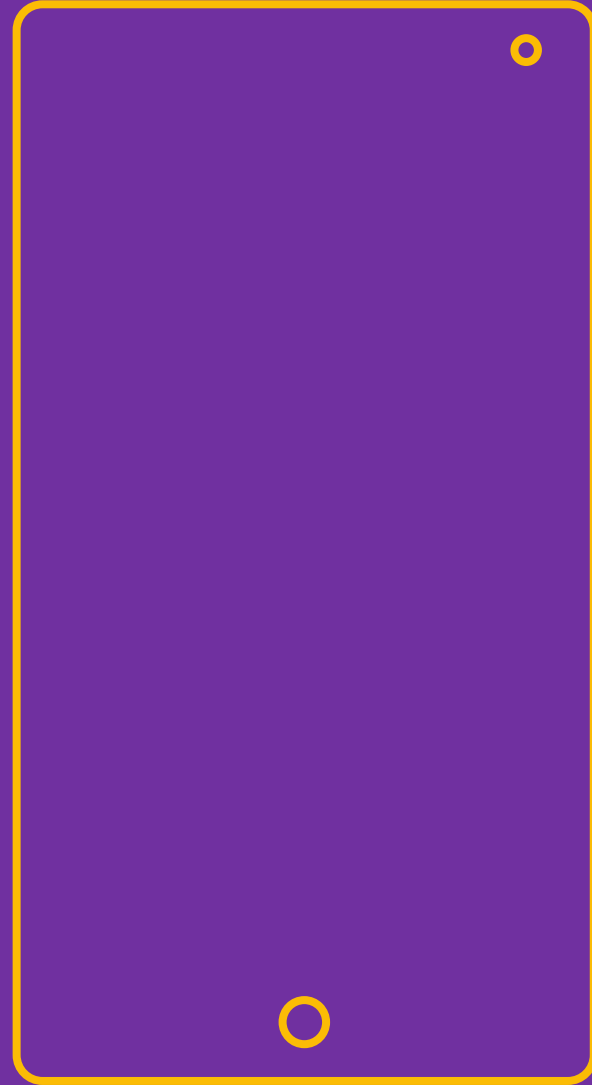
If you are presenting a website, an internet product or an app, you can place a screenshot of it here.





Add your title here.

If you are presenting a website, an internet product or an app, you can place a screenshot of it here.





Add your title here.

If you are presenting a website, an internet product or an app, you can place a screenshot of it here.

