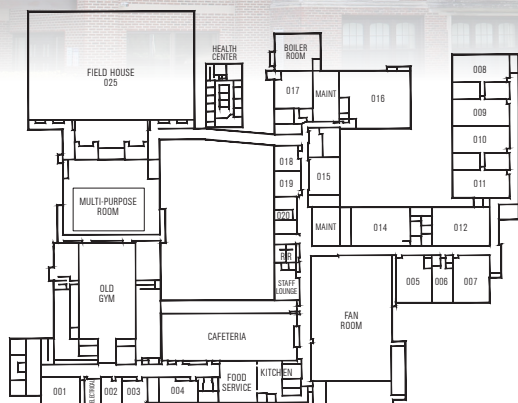


JACKSON HIGH SCHOOL



GROUND FLOOR



FIRST FLOOR



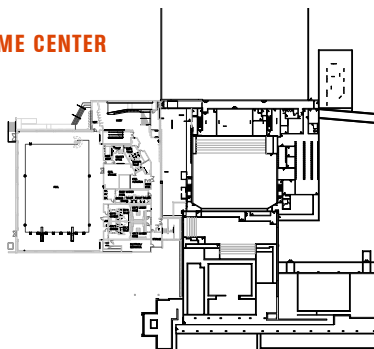
SECOND FLOOR



THIRD FLOOR



WELCOME CENTER



Community schools in Jackson have existed since the 1830s, and the current **JACKSON HIGH SCHOOL** building was opened in 1927. The brick and limestone building is a Collegiate Gothic style with two long wings that flank a prominent spired central tower.

Today, Jackson High School contains a 1,511 seat auditorium, an expansive library, nine computer labs, and the campus includes several outstanding athletic facilities. Withington Stadium, home of Dundy

Field, sports a field turf surface surrounded by a nine-lane, 400 meter rubber and polyurethane track. A 2,000 seat field house hosts volleyball matches and basketball games. In 2009, the Louis Glick Community Baseball Field, lighted baseball complex opened. The JHS Aquatic Center opened in 2021, it features a state-of-the-art, eight-lane Olympic sized swimming pool and seats 499 spectators.