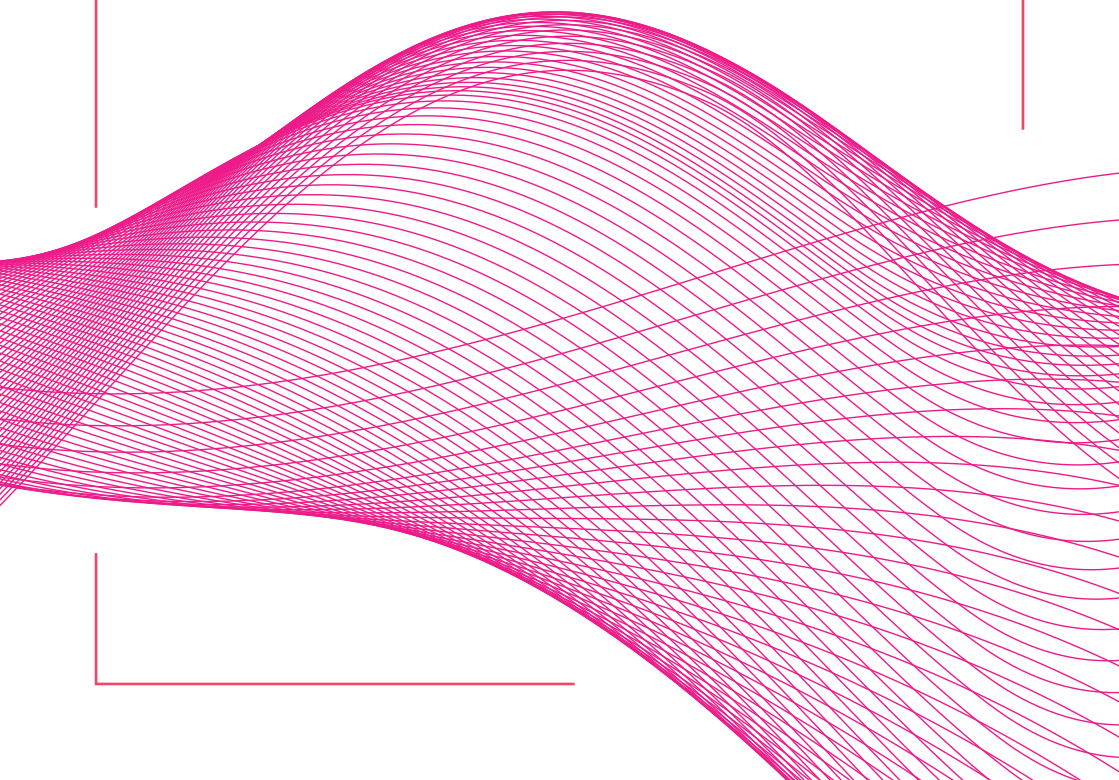




DEAN CLOSE  
**ST JOHN'S**

---

**KUKRI**



# CONTENTS

Bespoke Kit [Page 2](#)

Stock Kit [Page 3-4](#)

Looking After Your Sportswear [Page 5](#)

How to Order [Page 6](#)

Sizing [Page 7-8](#)

Returns Policy [Page 9](#)

Returns Form [Page 10](#)



## BESPOKE KIT

All items shown are available online.

Products are available on a 48hr delivery time and held by Kukri Sports as stock.

---



### REVERSABLE RUGBY JERSEY

Duolite

Youth £39.00

---

### COURT SHIRT POLO

S-spire 100% Polyester

Youth £34.00



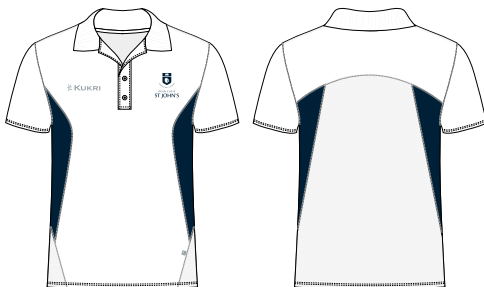
---

### TECHNICAL POLO

**Advance:** 100% Polyester, Vapour

**Mesh Back:** 100% Polyester

Youth £25.00



## STOCK KIT

All stock is available on a 15 day lead time and available online and not in the shop.

---



### 1/4 ZIP TRACK TOP

90% Polyester, 10% Elastomer

Youth £40.50

---

### KNIT TAPERED TRACK BOTTOMS

**Motion:** 95% Polyester,  
5% Elastane

Youth £31.00



### RUGBY TRAINING SHORTS

**Main Body:** 91% Polyester,  
9% Elastane

**Gusset:** 82% Polyester,  
18% Elastane

Youth £24.00

---

## STOCK KIT

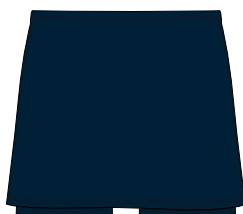
All stock is available on a 15 day lead time and available online and not in the shop.

---

### TRAINING SHORTS

**Main Body:** 91% Polyester,  
9% Elastane

Youth £24.00



### SKORT

100% Polyester

Youth £22.00

# LOOKING AFTER YOUR SPORTSWEAR

•**Turn sportswear inside out before washing** - Odour-causing bacteria builds up on the inside of your sportswear, so washing inside out will give it a more thorough clean.

•**Wash at 30 – 40 degrees Celsius** - Most sportswear is made using synthetic fibres such as polyester and nylon and should be washed in lukewarm or cool-to-warm water (30-40 degrees Celsius). This will help preserve their softness and colour. Hot water can damage these materials causing them to shrink or fade over time.

•**Do not use fabric softeners** - The stretchy and moisture-wick nature of your sportswear doesn't match well with the coating left behind from fabric softener, which makes it harder for water and detergent to fully penetrate the fibres, leading to the build-up of odour-causing bacteria.

•Fabric softener should also **NOT** be used on printed garments as chemicals in fabric softener break down the ink in printed logos causing them to fade or crack. Softeners also eat away at the adhesive on heat applied prints causing them to lift then eventually fall off.

•**Do not tumble dry your sportswear** - Agitation and extreme heat will not only damage the fibres of your sportswear but will also amplify odours and can potentially cause heat applied prints to fall off. Instead, just hang or lay your sportswear flat and let it air dry.

•**Always refer to ironing instruction on care label** – most sportswear if washed & dried correctly should not require ironing, however a very low heat iron setting (1 dot iron symbol) is permitted on certain fabrics. Prints and motifs should not be ironed under any circumstance.



# HOW TO ORDER

All Dean Close St John's School sports kit will be available to purchase on the below link.

Visit [www.kukrisports.com/uk/education-sportswear/schools](http://www.kukrisports.com/uk/education-sportswear/schools)

Then click on 'FIND YOUR SCHOOL'

All Dean close St John's sports kit will be available to purchase direct from the Kukri Sports website.

Orders placed on the online shop will be despatched within 3-5 working days; they can be delivered directly to the school boarding house or a home address.

School jackets will come with a 15 working day lead time. Please note that we would be unable to accept a return unless the item is faulty.

Once your order has been placed, you will receive an email confirmation with the order reference, along with a target delivery date. This email also will provide a link for you to track your order. **If you do have any queries on your order, please contact us quoting your order reference.**



T: 01772 338899



E: [contact@kukrisports.com](mailto:contact@kukrisports.com)

# SIZING GUIDE

## MENS / UNISEX

Size	To Fit Chest	To Fit Waist
2XS	34"	28"
XS	36"	30"
S	38"	32"
M	40"	34"
L	42"	36"
XL	44"	38"
XXL	46"	40"
3XL	48"	42"
4XL	50"	44"

### Leg Lengths

Short	30"
Regular	32"
Long	34"

## KIDS / UNISEX

Size	To Fit Chest	To Fit Waist
3/4	20-22"	21-22"
5/6	23-24"	22-23"
7/8	25-26"	23-24"
9/10	27-28"	24-25"
11/12	29-30"	25-26"
13/14	31-32"	26-27"

## WOMENS

Size	To Fit Chest	To Fit Waist
6	30"	24"
8	32"	26"
10	34"	28"
12	36"	30"
14	38"	32"
16	40"	34"
18	42"	36"
20	44"	38"
22"	46"	40"

### Leg Lengths

Short	28"
Regular	30"
Long	32"

## YOUTHS / UNISEX

Size	To Fit Chest	To Fit Waist
YS	28-29"	25-26"
YM	30-31"	26-27"
YL	32-33"	27-28"



# SIZING GUIDE



**REGULAR (CLASSIC) FIT**

A traditional, standard cut for enhanced range of motion and an effortlessly relaxed fit.

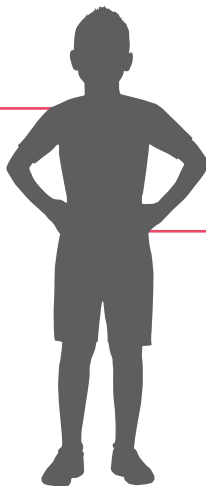


**ATHLETIC FIT**

A slimmer, tighter cut that delivers optimal mobility by eliminating the bulk of extra fabric.

## CHEST

Measure under your arms at the fullest part of the chest.



## WAIST

Measure around your natural waistline, above your hips.

## OTHER FITS

There are a wider range of fitting options to choose from for bespoke garments. The garment measurements for bespoke garments may vary dependent upon the sport the garment is intended for.

# RETURNS POLICY

Our Returns policy varies depending on the type of products you have ordered. See below for more information on each type of order and their return eligibility. Your statutory rights are not affected. Please read this information carefully avoid disappointment.

**BESPOKE ORDER** – Goods that have been designed using our Kit designer, or have been purchased on behalf of a School/College/University or organisation, or whose kit is of a bespoke design (i.e. not available as part of our Stock range). These bespoke goods are non-returnable and cannot be refunded or exchanged.

**Exception:** *We will only accept returns for Bespoke orders in the event of a manufacturing fault. Where the fault is evident on delivery, for example, a name has been spelt incorrectly, this must be reported to Kukri immediately and the faulty item returned within 14 days of delivery, in their original condition, with all tags, bags and labels attached. Kukri reserve the right to reject your claim if you report or return your goods after the 14th day of delivery. For more information, please see our Terms and Conditions. For all other faults, please call our Customer Services Team.*

**PERSONALISED/CUSTOMISED ORDER** – Stock item(s) that you have customised, or where you have purchased customised stock on behalf of a School/College/University or organisation, who's kit include logo(s), name(s) and/or number(s). These garments are non-returnable and cannot be refunded or exchanged.

**Exception:** *We will only accept returns for Personalised/Customised orders in the event of a manufacturing fault. Where the fault is evident on delivery, for example, a name has been spelt incorrectly, this must be reported to Kukri immediately and the faulty item returned within 14 days of delivery, in their original condition, with all tags, bags and labels attached. Kukri reserve the right to reject your claim if you report or return your goods after the 14th day of delivery. For more information, please see our Terms and Conditions. For all other faults, please call our Customer Services Team*

**PLAIN STOCK** – You can return plain stock items to us within 14 days of delivery for a refund. The garments must be in their original condition, with all labels, bag, and tags intact. Any garments returned outside of this time will not be accepted. Please allow 10 working days for your return to be processed from the date we receive it, and a further 5-10 working days for any funds owed to clear into your account. This is dependent on your bank or credit card company.

**SAMPLE ORDER** – Where a sample order has been agreed as returnable, they should be returned to Kukri within 28 days of the despatch date. Any samples returned outside of this time will not be accepted and you will not be eligible for a refund of your deposit. The garment must be returned in their original condition with all labels, tags and bags intact, soiled samples will incur a 5 dry cleaning charge. Damaged garments will result in the deposit being retained. Bespoke and customised orders are non-returnable when purchased as a sample.

**NB. Samples must be returned via your own courier arrangement or registered post. Please ensure you can track the package; in the event it is not received by Kukri as we are not responsible for returns that do not arrive.**

Please take reasonable care of the goods while in your possession. We ask that all labels and tags are not removed until you are sure that you are keeping your goods, along with any original packaging, to avoid rejection of your return. This is applicable for both faulty and non-faulty items. Goods should not be soiled or damaged in any way.

Kukri are now able to offer a free returns service for all returns weighing less than 15kg. When you are issued with a return form you will also receive a link to our approved courier's website, where you will be able to arrange your return. Should you prefer or for returns over 15kg you can send via your own courier arrangement, or registered post. Please ensure you can track the package, as in the event it is not received by Kukri we are not responsible for returns that do not arrive. If you choose to use an alternative courier, please note that the return cost is payable by the customer.

Please allow 10 working days for your return to be processed from the date we receive your return, and a further 5-10 working days for any funds owed to clear into your account. This is dependent on your bank or credit card company.

Please note: Our standard product warranty for garments is 6 months from manufacture.

If you would like to discuss your order, you can email our Customer Services team at [contact@kukrisports.com](mailto:contact@kukrisports.com) or you can telephone them **01772 338899** where one of the team members will be happy to help.



# RETURNS FORM

We are unable to process returns without a Returns Reference number and a Returns Form. Please contact our Customer Services team on **01772 338899** or email us at **contact@kukrisports.com** to obtain your claim reference number; without this your return may not be processed.

If you are returning a plain stock item for a refund, this should be reported and returned to us within 14 days of delivery. If you have a non-faulty garment which has been designed on our Kit Designer (i.e. not available from our stock range) or you have a personalised/customised stock item, which has a logo, name and/or number, these cannot be returned except in the case of a manufacturing fault. In this case the standard terms of return apply. Please see the Returns Policy for details.

Please complete this form and enclose it with any returns.  
We are unable to process returns without a valid claims reference and accompanying returns form which has all the information requested below.

Goods should be returned to:  
**Returns Department**  
**Kukri Sports Ltd**  
**171 Brierley Road**  
**Walton Summit**  
**Preston, PR5 8AH**

Your Details

Date of Return	
Claim Reference Number	
Name	
Address	
Email Address	
Contact Telephone Number	

Is your order: (circle the correct one)   \*Bespoke   \*Personalised   \*Stock   \*Sample

What is Enclosed

Qty	Product Description	Size	Exchange Size

Reason for Return (Circle)

\*Incorrect size ordered   \*Faulty/damaged garment   \*Incorrect personalisation   \*Wrong item received   \*Item no longer required  
\*Refund   \*Credit   \*Replacement

Space for Details (add as much information as you can to assist the processing of your return. E.g. details of fault, or damage to garment):

☐

**Tick to confirm you have read the Returns Policy before returning your order.**





DEAN CLOSE  
**ST JOHN'S**

**DEAN CLOSE ST JOHN'S SCHOOL, Castleford Hill,  
Tutshill, Chepstow NP16 7LE**

Telephone: 01242 267431 direct dial | EXT 337  
Email: Samuel R. J. Taylor at [SRJTaylor@deanclose.org.uk](mailto:SRJTaylor@deanclose.org.uk)

 **KUKRI**