



South Whidbey School District

Design Steering
Committee

Meeting #4



02.21.2024

INTEGRUS

A COLLABORATION OF YGH & INTEGRUS ARCHITECTURE

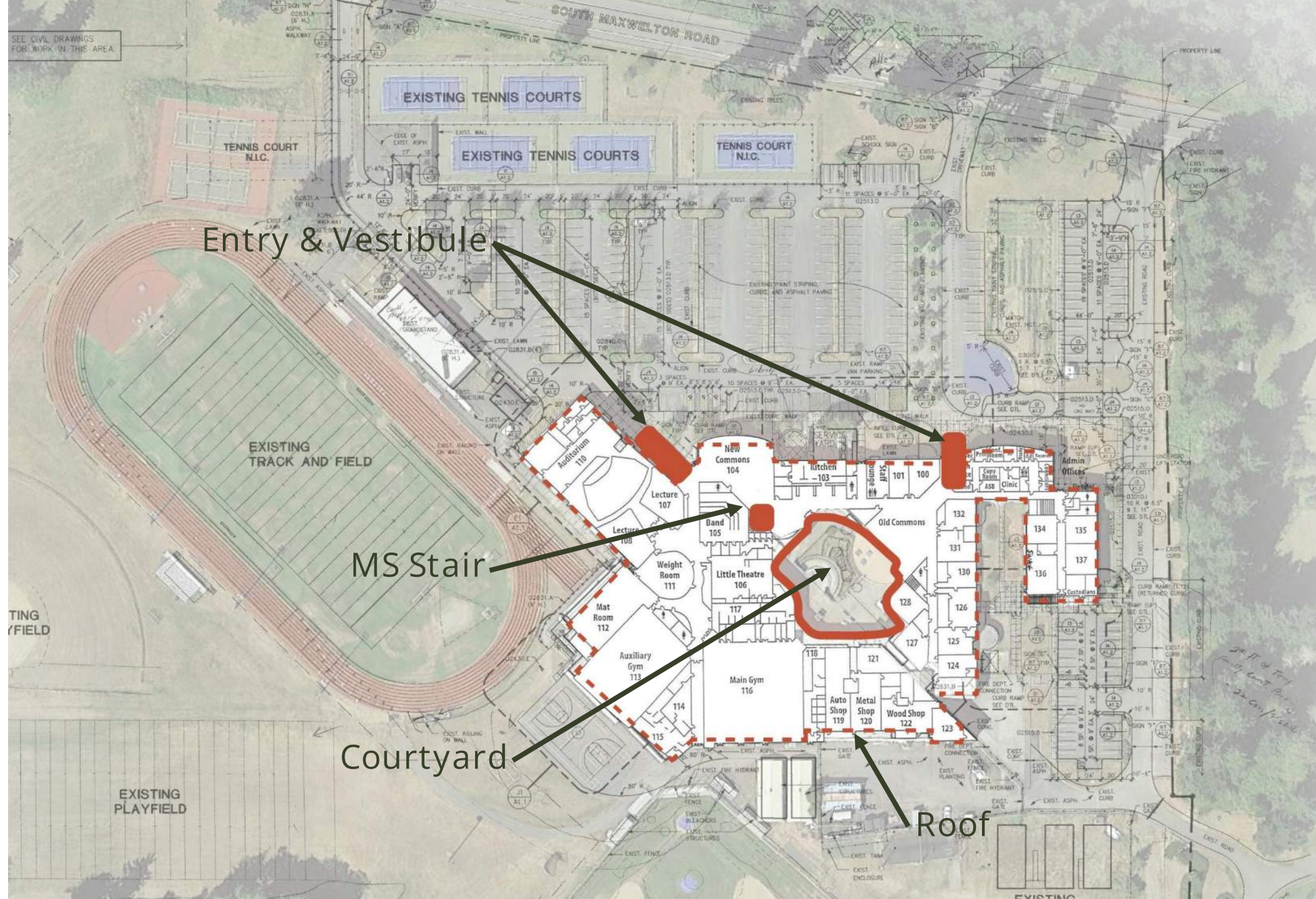
AGENDA

- Early Works - Progress Update
- Athletic Fields
- Entry Design



Early Works – Progress Update





W. GATE

NATE GATE SEE

NATE

[illegible]

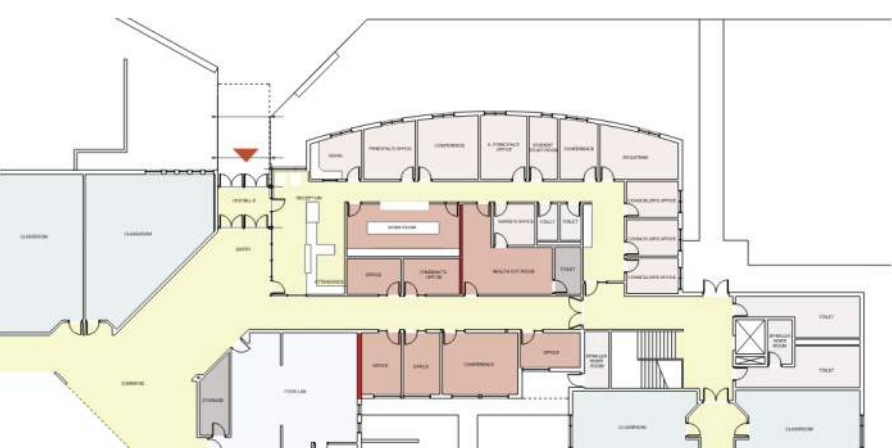
ADMIN USER MEETING – MS / HS



NEW SECURE VESTIBULE ADMIN CONFIG A

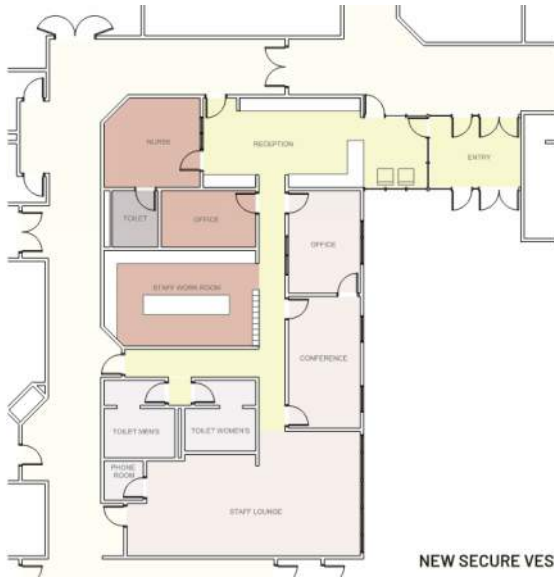


NEW SECURE VESTIBULE ADMIN CONFIG B



NEW SECURE VESTIBULE ADMIN CONFIG C

ADMIN USER MEETING – ES



NEW SECURE VESTIBULE ADMIN CONFIG A



NEW SECURE VESTIBULE ADMIN CONFIG B

INCLUSIVE PLAYGROUND RECAP

- Accessible vs Inclusive
- Benefits and Drawbacks of Different Safety Surfaces
- Weekly Meetings
- Discuss Priorities
- Review Schedule & Budget
- Potential Phased Approach



Next Steps



Athletic Fields



ATHLETIC FIELD AGENDA

- Discuss Types of Athletic Fields
- Benefits and Drawbacks of each
- Components of Synthetic Turf Fields
- Discuss Benefits and Drawbacks of various Turf options
- Review of samples and question and answer time
- Next Steps



Types of Athletic Fields

- Sand Based Natural Grass
 - Requires Subdrainage / Detention
 - Requires Irrigation system
 - High nutrient needs/requirements
 - High water use requirements
 - High maintenance requirements
 - Increased playability in wet weather
- Topsoil Based Natural Grass
 - Less playable in wet weather
 - Lower cost
- Synthetic Turf
 - High Initial resource requirements
 - Requires Subdrainage and Detention. Possibly additional stormwater treatment
 - Increased use and playability
 - Long Term replacement costs
 - Environmental concerns

Synthetic turf fields

Components of a turf field

- **Base Layer and Drainage**
- **Pad/ Impact layer**
- **Turf and Fibers**
- **Infill materials**



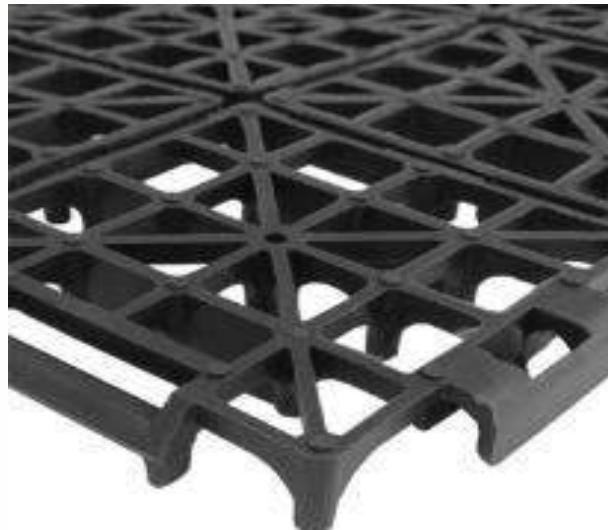
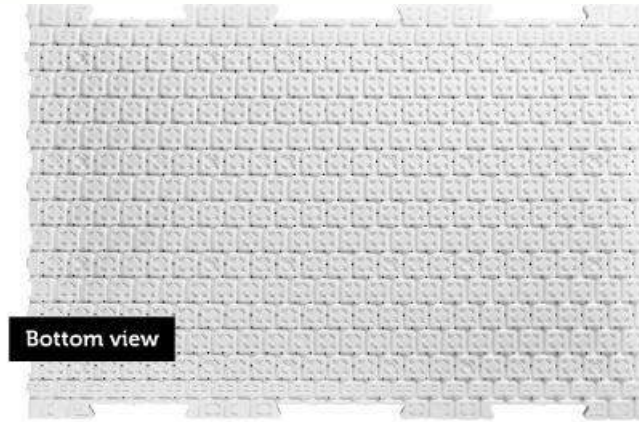
Base Layer, Drainage, Detention, and Treatment

- Base Work
 - Clearing and haul off and grading
 - Detention system
 - Subdrainage
 - Geotextile Fabric for poorer soils
 - Permeable Crushed rock base course and top course



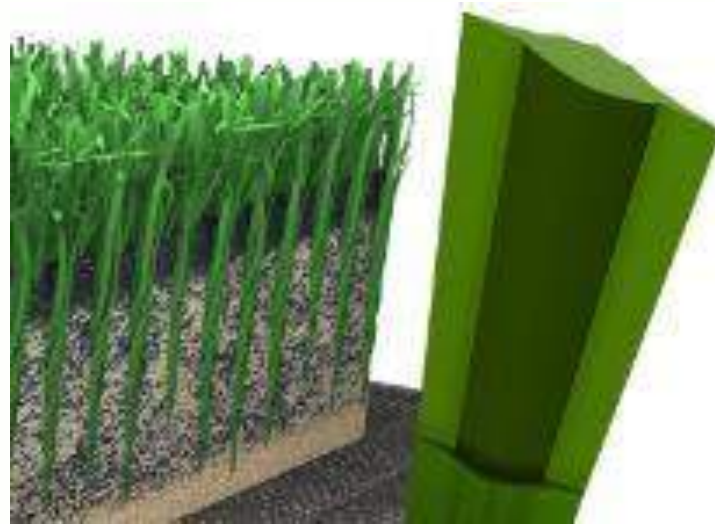
Pad / Impact attenuation layer

- Types
 - E-layer
 - Brock type Foam Pad
 - ProPlay Foam Pad
 - Rubber Pads
 - Other



Turf and Fiber types

- Turf Options
 - Monofilament/ Blade
 - Slit Film
 - Dual Fiber
 - Thatch Layer/ Root zones
 - Backing and Drainage



Slit-Film



Monofilament



Dual Fiber



Infill

- Infill Options
 - SBR tire rubber
 - Plastics, TPE/ EPDM
 - Cork
 - Nut/Organics
 - Wood fibers
 - Sand
 - Coated Rubber
 - Other



Health and safety

- Current topics
 - Environmental issues
 - Life Cycle Costs
 - Drainage/Treatment
 - Lead
 - PFAS
 - 6 ppd (salmon)
 - Microplastics
 - Injury
 - Concussions
 - Other



Entry Design Update



What We Heard

LISTENING AND LEARNING



PLACE

The natural environment (Forest, Field, and Sea)

LOCAL

South Whidbey Island is a distinct place to be celebrated

CIVIC

There is civic pride in the community's public schools. Collective memory and amenity for the whole community. (Athletics, Performance, Programs)

CULTURE

The community exists within a historic and culture context.

RESPONSIVE

The buildings should be responsive to the place and community. It should have an identity but not dominate.

DURABILITY

Building materials should be easy to maintain, robust and provide good value for community investment

Precedent Studies

ANALYSIS OF PRECEDENT EXAMPLES



CANOPIES

Generous overhead canopies provide shelter from the elements and become natural gathering spaces.

TRANSPARENCY

Transparency into and out from the entry and Admin reception creates an atmosphere of welcoming while improving sight lines and security.

SECURITY

Secure vestibule that monitors and controls access to the school

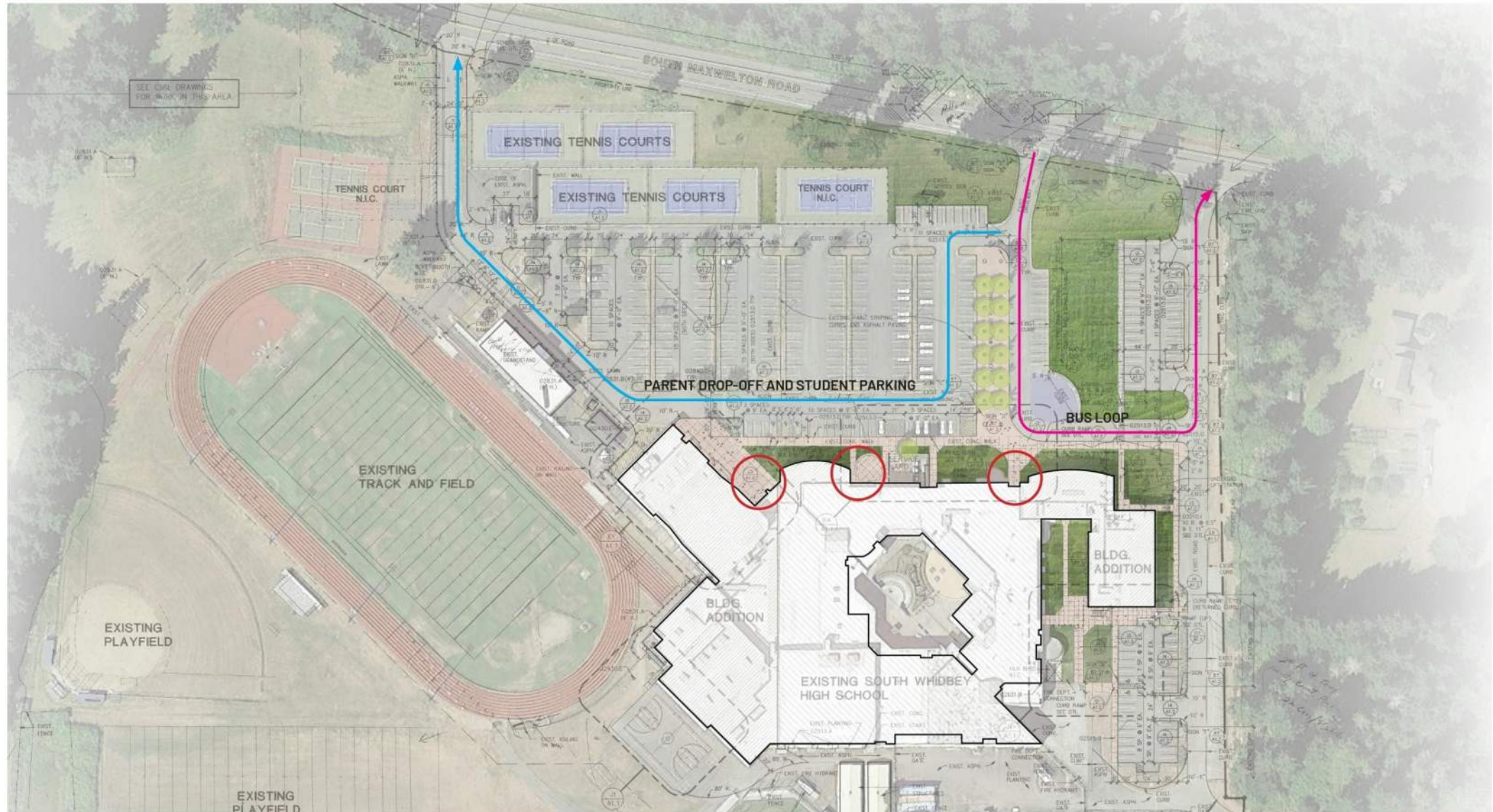
MATERIALS

Robust human scale materials to signal arrival

GATHERING

Wayfinding, color, seating and site design strategies to lead occupants to the building.

Site Circulation Patterns and Existing Entry Points



Site plan of the Liberty East development. The plan shows building footprints, parking areas, and landscaping. Two red arrows point to specific areas: one to a landscaped area near the left building and another to a landscaped area near the right building. The plan includes various annotations such as 'EXIST. GRANDSTAND', 'EXIST. LAWN', 'EXIST. RAMP VAN PARKING', and 'EXIST. CONC. WALK'. Dimensions and notes like 'SEE DTL' are also present.

Site Approach to Student and Visitor Primary Entrances



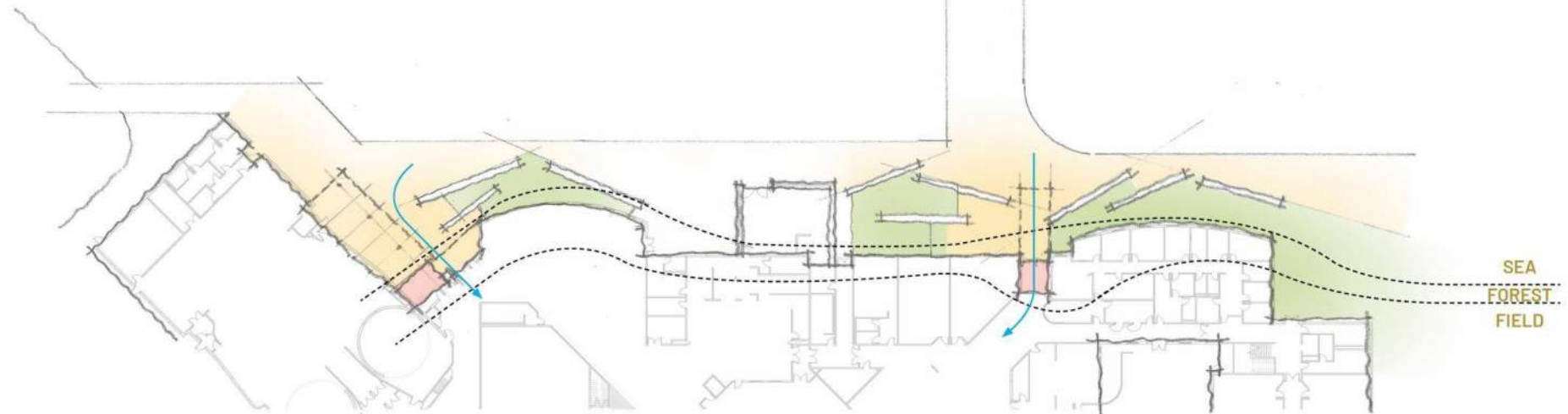
Site Approach Inspiration



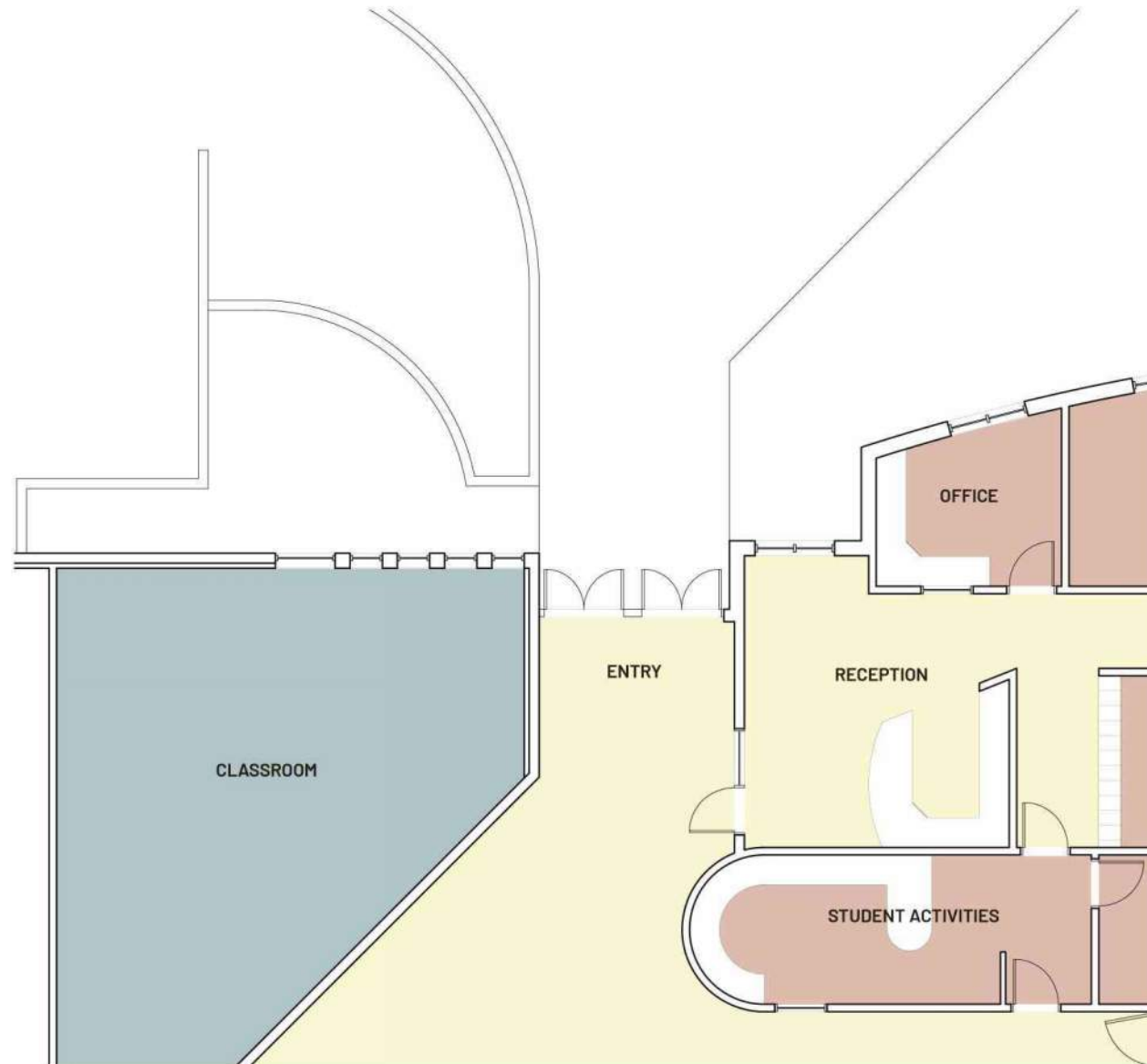
SEA

FOREST

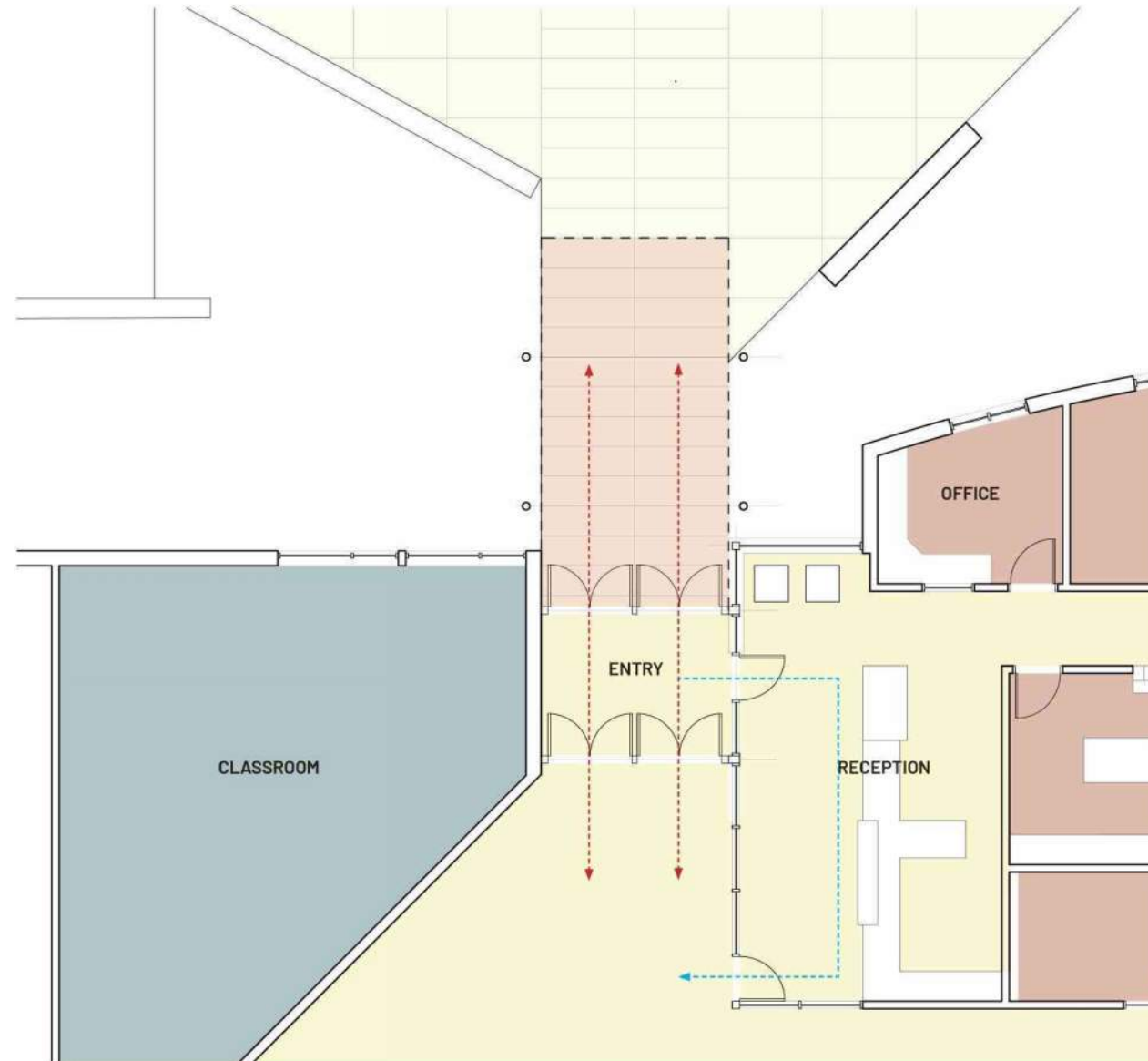
FIELD



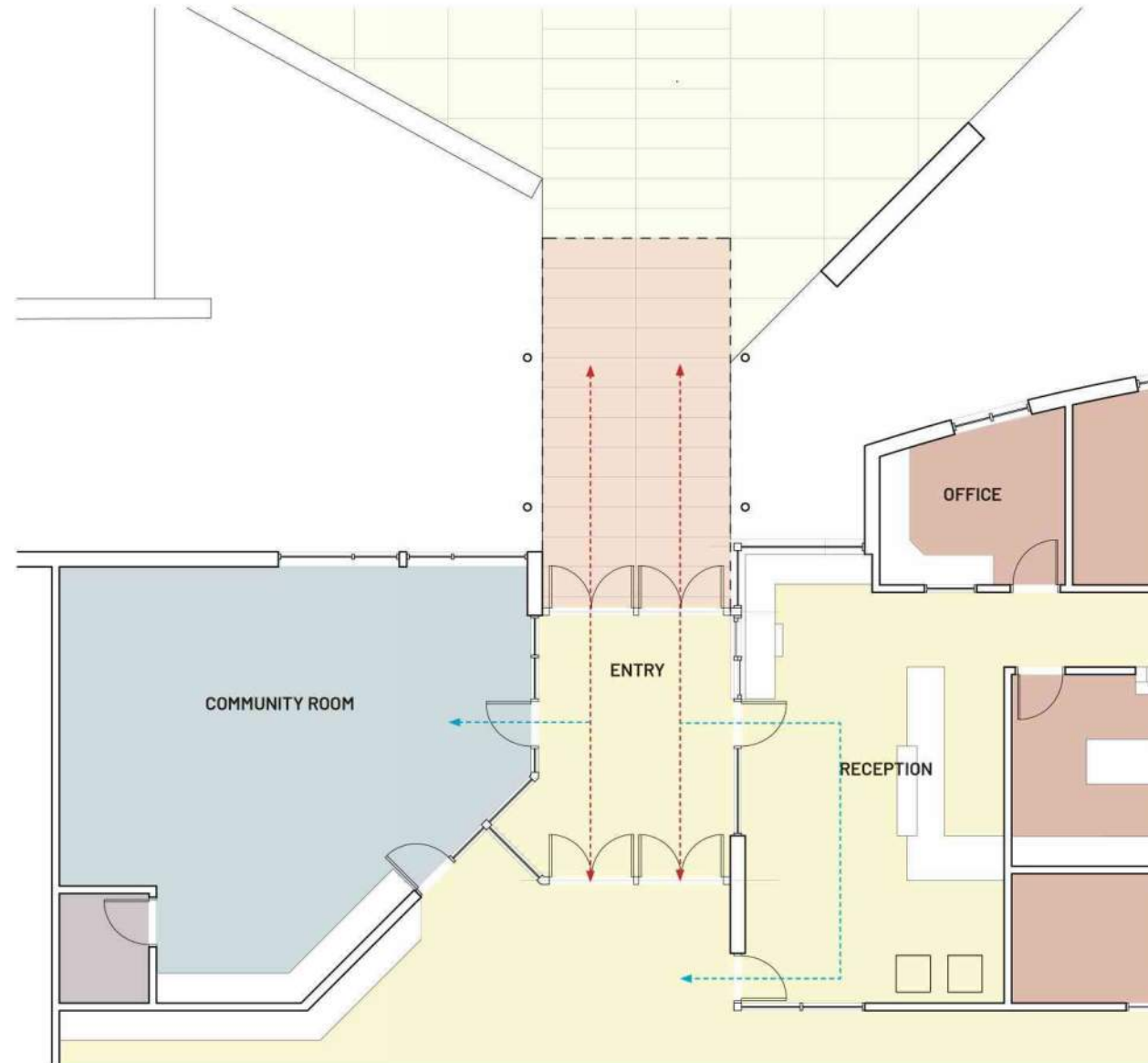
Main Building Entry Current Configuration



Main Building Entry Proposed Secure Vestibule



Main Building Entry Proposed Secure Vestibule With Access to Community Conference Room



Main Building Entry Current Condition



Main Building Entry Proposed Character Studies



Main Building Entry Proposed Character Studies



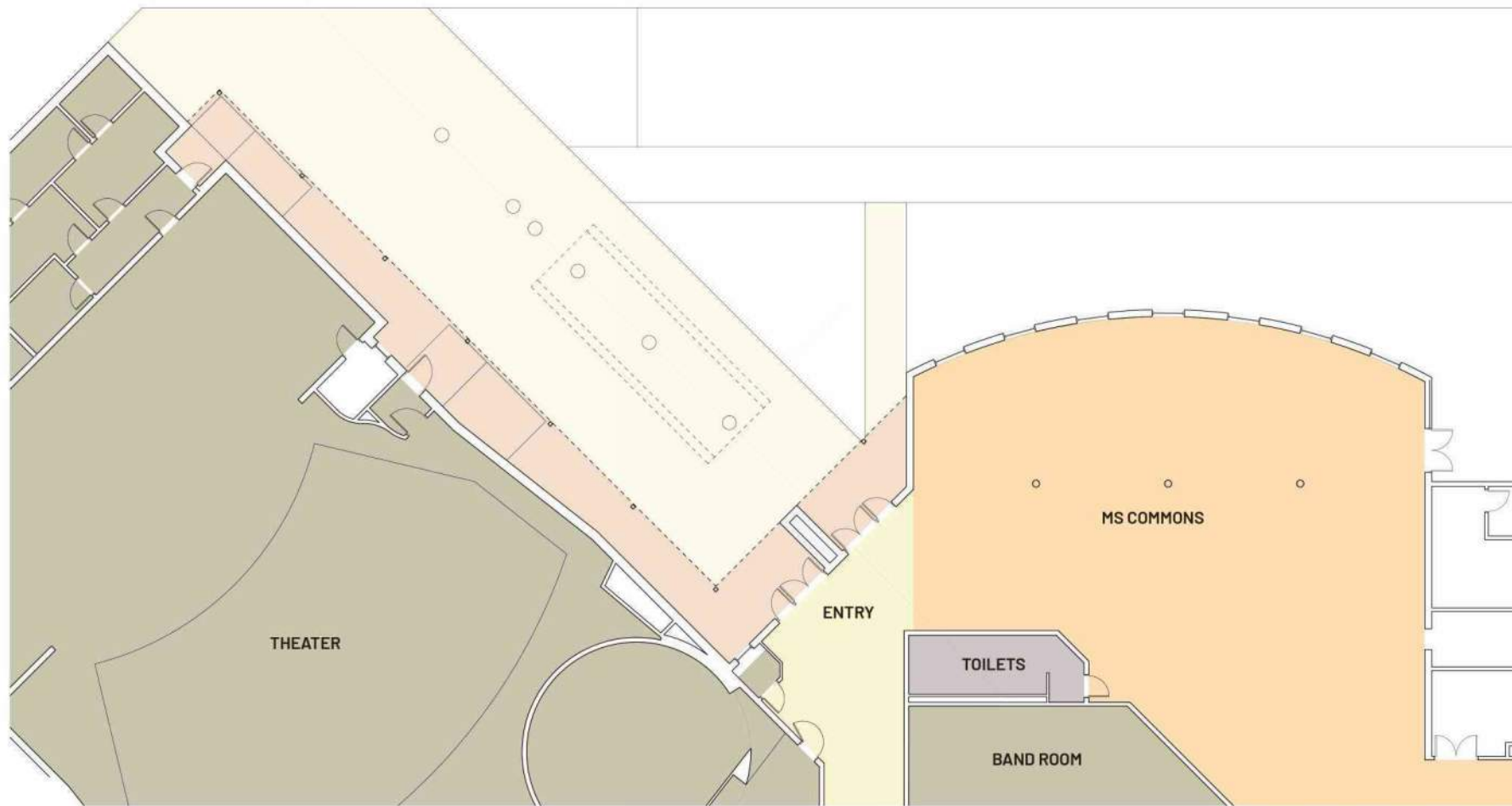
Main Building Entry Proposed Character Studies



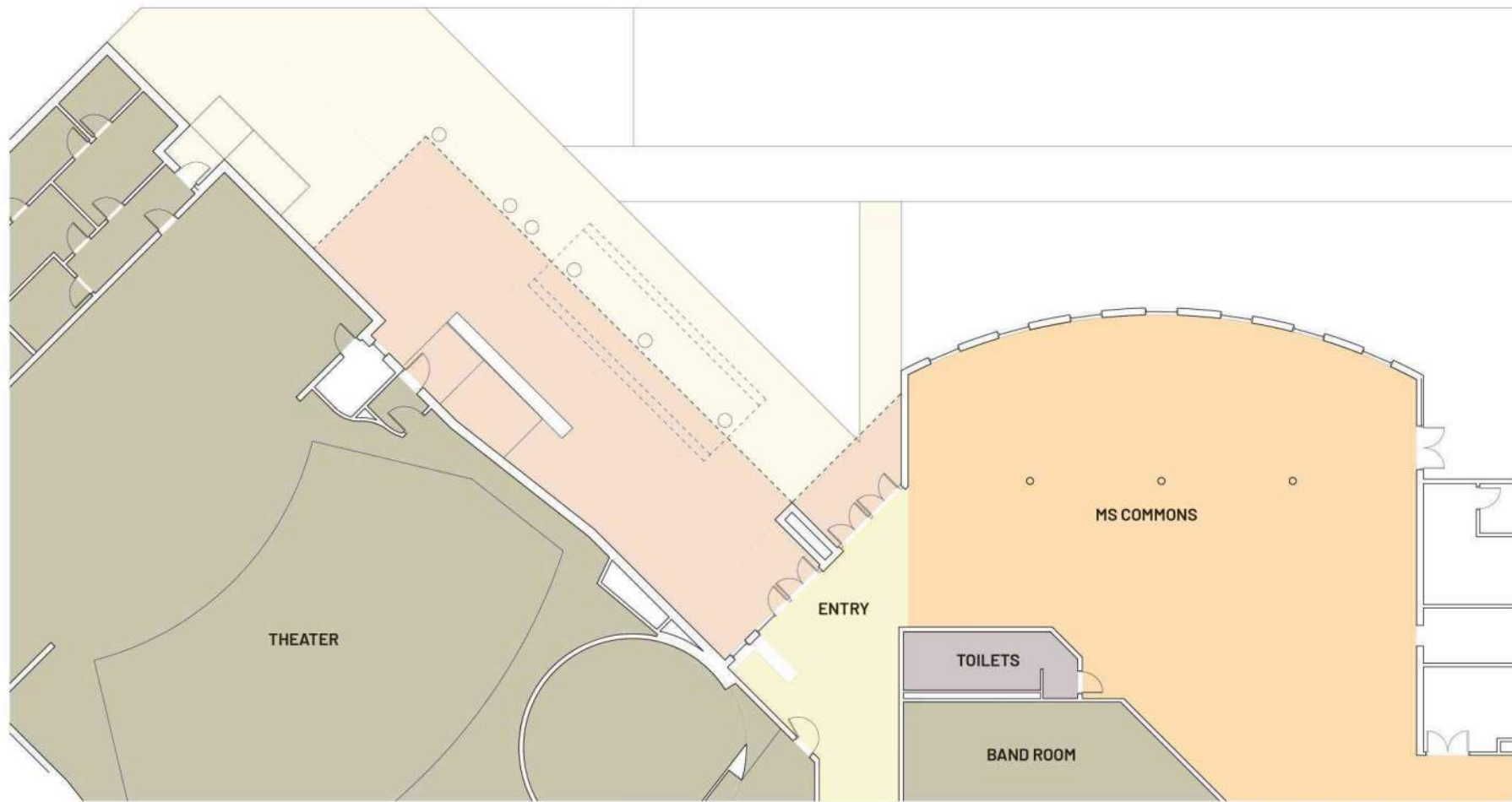
Main Building Entry Proposed Character Studies



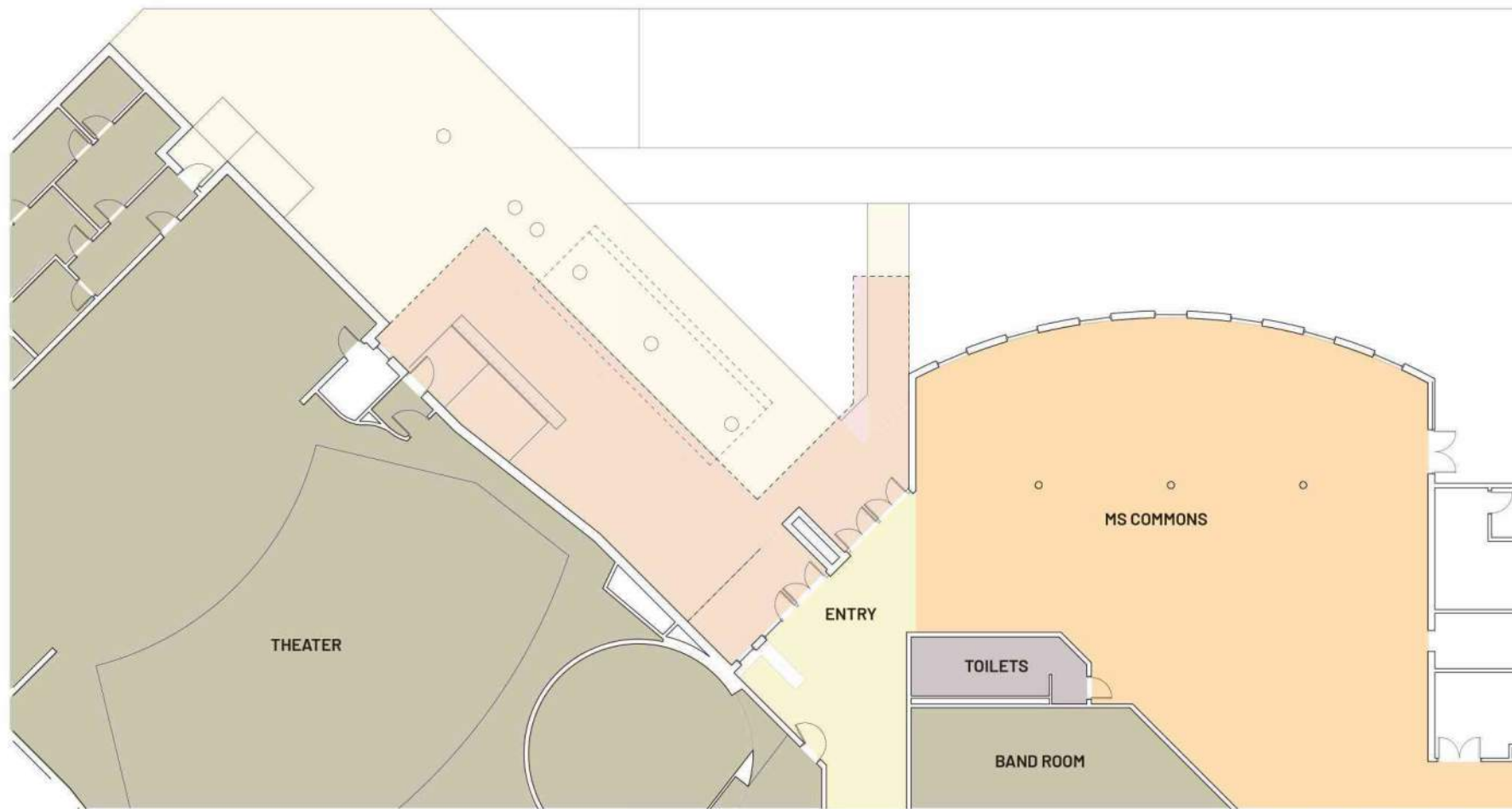
Middle School, Athletics and Performing Arts Entry Current Configuration



Middle School, Athletics and Performing Arts Entry Proposed Canopy Extension



Middle School, Athletics and Performing Arts Entry Proposed Canopy Extension



Middle School, Athletics and Performing Arts Entry Current Condition



Middle School, Athletics and Performing Arts Entry Proposed Canopy Extension Character Studies



Middle School, Athletics and Performing Arts Entry Proposed Canopy Extension Character Studies



Material Palette Inspiration



Metal Panel Rhythm



Metal Panel



Steel Canopies



Painted Structure



Existing Masonry Cladding



Accent Color and Signage

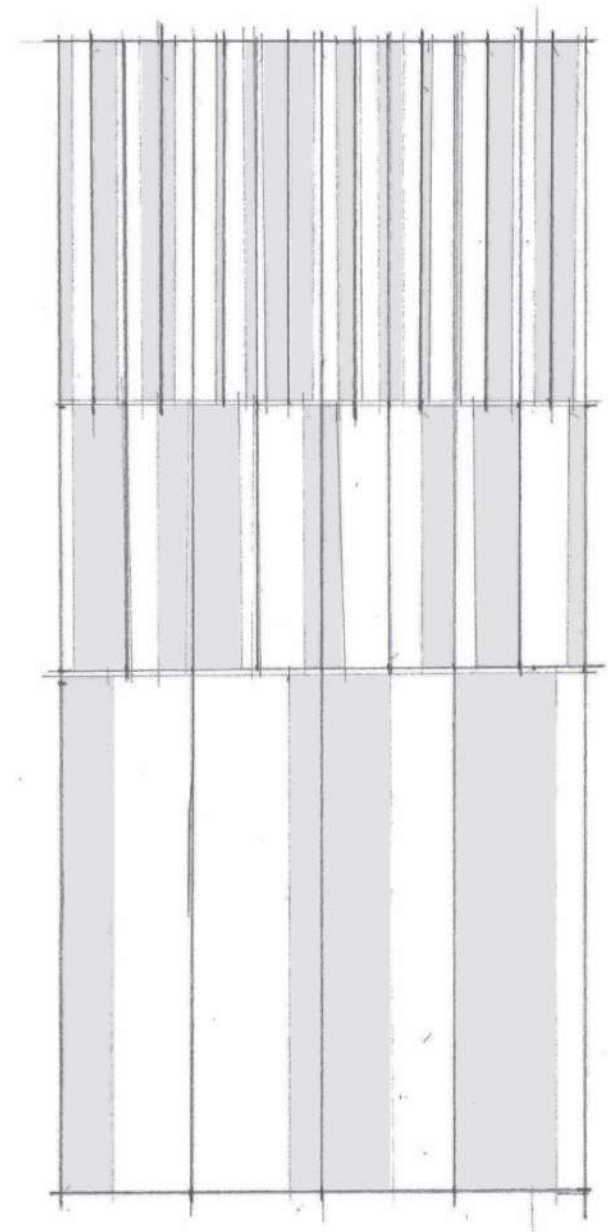
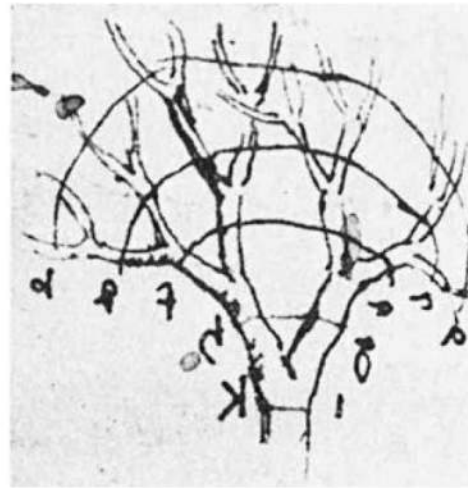
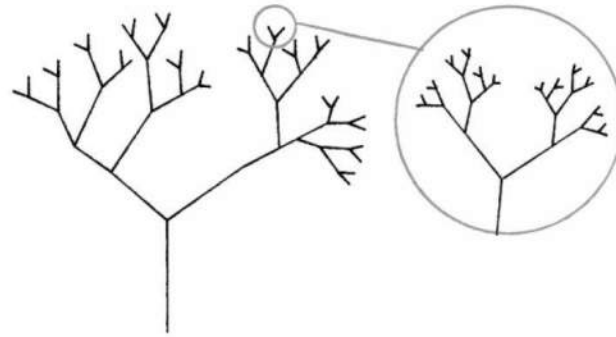


Wood Cladding

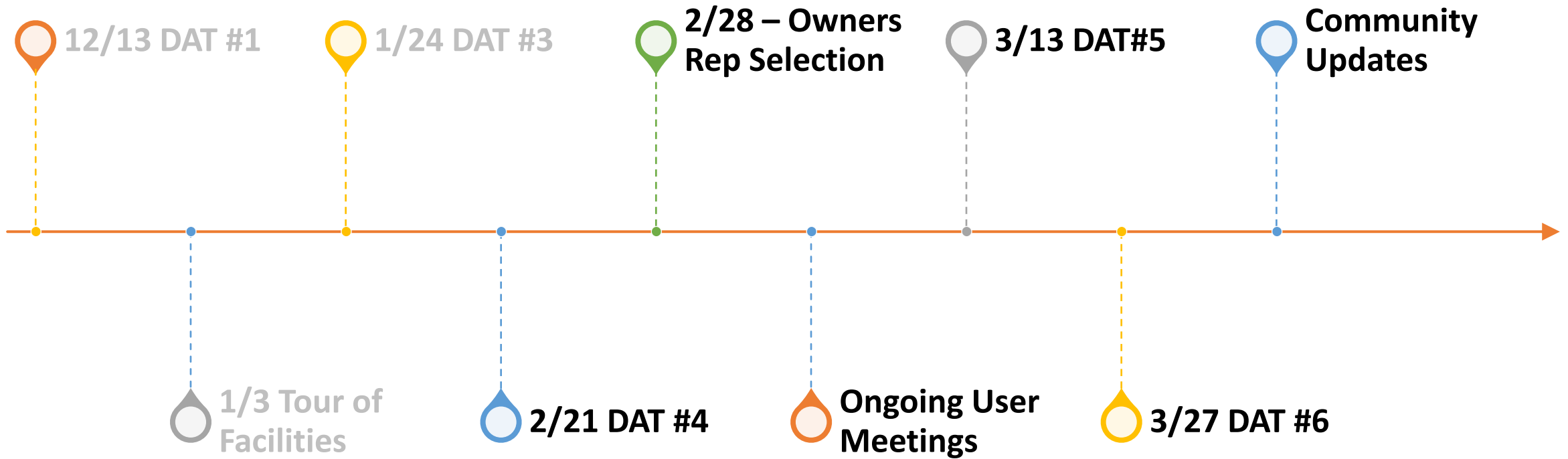


Metal Soffits

Material Inspiration from Nature



SCHEDULE



Future Topics

- Sustainability
- Wayfinding & graphics
- Interior design
- Middle School Stair

Upcoming User Meetings

- Administration
- Security
- Maintenance & Operations
- Play



- Please share any items that you would like to discuss further.

THANK YOU!



INTEGRUS

A COLLABORATION OF YGH & INTEGRUS ARCHITECTURE