



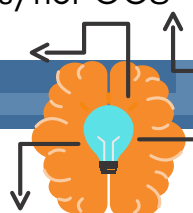
Vision: *Excellence in Gifted Education*

Mission Statement: *To prepare AIG students to be globally competitive and responsible citizens by providing differentiated curricula which meet the social, emotional, academic, and intellectual needs of identified and potentially gifted students.*



## SCREENING, IDENTIFICATION, AND PLACEMENT

Onslow County Schools' commitment to providing an appropriately differentiated education for all academically or intellectually gifted students is evidenced by the school system's screening, assessment, identification, and AIG placement procedures. Students can be referred by their teachers, parents, peers or self-referral. AIG Specialists also routinely collect data for school performance and screen the top 10 percent in multiple areas. If the school's AIG Match Team ascertains that a student meets the appropriate criteria for screening, parental consent is obtained before testing. Each AIG identification and placement decision is made on a case-by-case basis according to individual student assessment results. If a student meets the OCS criteria for identification and placement, a DEP (Differentiated Education Plan) will be developed for the student in conjunction with the student's teacher and the AIG Specialist and written parental consent for services will be secured. The DEP recommendations, service options, and learning environments will be reviewed annually with the parent/guardian. A student who is identified as AIG may remain eligible for AIG services throughout his/her OCS school career, with no reassessment necessary.



## PLACEMENT PATHWAYS

In order to accurately identify giftedness in students a clear, comprehensive, and equitable screening, referral, and identification process must be in place. Onslow County Schools currently employs two different pathways for entrance into the AIG Program.

### Pathway 1

IG--Aptitude is 97th percentile or higher in any area (Verbal, Quantitative, and/or Nonverbal).

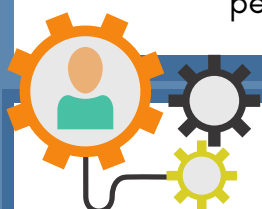
--OR--

Both Aptitude and Achievement are 92nd percentile or higher.

### Pathway 2

Either Aptitude or Achievement is 92nd percentile or higher combined with two additional criteria met: •

Hope Scale • Renzulli Creativity Scale • Renzulli Motivation Scale • Reading or Math Portfolio



## PROGRAM SERVICE OPTIONS

Academically or intellectually gifted (AIG) students have unique needs that require differentiation from regular classroom instruction. The gifted program service options are designed to provide a comprehensive, advanced, and challenging course of study aimed to meet the academic and social-emotional needs of gifted learners.

**Grades K-2** Talent Development allows children to engage in a wide variety of developmental experiences. These experiences help shape gifted and potentially gifted students' educational foundation, which in turn supports their academic and intellectual growth. Students in grades K-2 may be engaged in small groups focusing on critical thinking and deductive reasoning. Participation in Talent Development groups does not mean a child has been identified as gifted, as the formal screening typically occurs in 3rd grade.

**Grades 3-5** AIG students are served through inclusion, pullout, consultative services, or a combination of all. Services target higher order thinking skills for cluster groups of identified AIG students and unidentified advanced students in Talent Development. Lessons may include, but are not limited to, advanced reading and math, chess, and units developed by Gifted Specialists. Students who score a Level 5 on Reading and/or Math End of Grade Tests will receive gifted services. Equity and access to advanced opportunities are essential.

**Grades 6-8** AIG students are grouped together by ability and attend advanced reading, math, social studies, and science classes as a group. Like Grades 3-5, students who score a Level 5 on a Reading and/or Math End of Grade Test will receive gifted services. NC Virtual Public School (NCVPS) and NC Public High School courses are available for subject acceleration. The opportunity to apply to Onslow Early College High School occurs in 8th grade. AIG Specialists serve as a resource for differentiation and acceleration for teachers.

**Grades 9-12** AIG students can self-select Honors, Advanced Placement, and NC Virtual Public School (NCVPS) courses. Career and College Promise (CCP) allows students to take college classes at Coastal Carolina Community College during their junior and senior year. Additional opportunities include, but are not limited to: Governor's School, Governor's Page Program, National Honor Society, NC School of Science and Math, Scholar's Diploma, and Sponsors of Academic Talent (SAT).

## STUDENTS NEW TO OCS

A student new to Onslow County Schools who was identified and served in a gifted program prior to his/her enrollment in the OCS System, will be considered for immediate AIG placement and/or additional screening. OCS honors the Interstate Compact on Educational Opportunity for Military Children. Students of military families who present themselves as identified gifted from other districts will receive gifted services until full records can be reviewed by the school's AIG Match Team.

### Administrative Staff

Dr. Michael Elder @meldernc  
Director, College and Career Readiness  
(910) 455-2211 ext. 71271  
michael.elder@onslow.k12.nc.us

Michelle Chadwick  
Assistant Director, Advanced Learning & STEM  
(910) 455-2211 ext. 71272  
michelle.chadwick@onslow.k12.nc.us

Monisha Burney, Administrative Assistant  
monisha.burney@onslow.k12.nc.us



OCS Gifted Services



#onslowaig