



NAMI
National Alliance on Mental Illness

Missouri

SUPPORT / EDUCATION / ADVOCACY

SUMMER 2019

SUPPORT GROUP LEADER TRAINING OPEN TO PEOPLE LIVING WITH MENTAL ILLNESS AND THEIR FAMILY MEMBERS

Jefferson City, Mo (July 2019) NAMI Missouri is offering free trainings to Missourians who want to start a mental health support group.

Two separate support group leader trainings are being held this summer in Jefferson City. The Connection Recovery Support Group Facilitator Training will be Aug. 9 - 11 for those who are living with a mental illness or mental health condition. The Family Support Group Facilitator Training will be September 7 - 8 for family members of those living with a mental illness or mental health condition.

“Support groups bring people together to help one another get through difficult situations, and to find strength in knowing they are not alone,” said Gena Terlizzi, Executive Director of NAMI Missouri. “These trainings will help

strengthen and expand the number of support groups to make them available to even more Missourians.”

By the end of the training, participants will be certified to facilitate a mental health support group in their home communities.

The statewide trainings are open to those who are interested in starting a new support group and to those who would like to become certified to join an existing group as a co-facilitator.

There are currently 16 Connection Recovery Support Groups for people living with mental health conditions and 24 NAMI Family Support Groups for family members that are held on a regular weekly or monthly basis across the state of Missouri.

Support group training details on page 5

CHILDREN’S MENTAL HEALTH WEEK 2019

Youth advocates from across the state took part in the 2019 Children’s Mental Health Week ceremony in May. The event is an annual collaboration by NAMI Missouri, the Missouri Department of Mental Health and other mental health and child advocacy organizations. This year’s event included a Children’s Mental Health Week proclamation presentation by Missouri Gov. Mike Parson, a bell ringing ceremony, and a pizza party. Children’s Mental Health Week is recognized as the first full week in May each year to highlight the importance of youth mental health.



IN THIS ISSUE:

In Loving Memory pg. 2 • Board Election Results pg. 3 • Support Groups pg. 6-7

3405 W. Truman Blvd., Suite 102, Jefferson City, MO 65109
Office: (573) 634-7727 • WARMLine: (800) 374-2138 • namimissouri.org

In the Know

Memorial Donations and Tributes

A donation by Harry & Mary Ann Wheeler in honor of
Sherry "Bunny" Ingraham

A donation by Leslie Yoffie in honor of
Lauren Beth Weissman

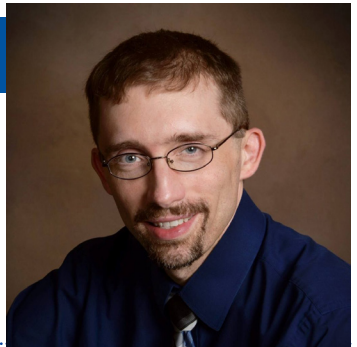
Donations by Carolyn & David Steinmertz; and Edward & Linda Eschenfelder in honor of
John Joseph Donnelly

A tribute donation by the Xi Iota Phi Chapter of Beta Sigma Phi in recognition of their Woman of the Year
Cathy Talley

Special thanks for the generous support of:
The Harrison Foundation
The Edward and Thea Lawton Foundation
The Edwin and Barbara Krigel Charitable Trust

And to Joe & Heidi Custin for their work with the
Sing Out Stigma Awareness & Fundraising event

Donations by Linda & Ken Askeren; Jacquie Baumgartner; Roger & Janie Bonham; Ed Bothe; Tammy Broaddus; Vicki Brown; Barb Buchanan; Elizabeth Couper; Maureen Coy; Sherry Fischer; Joyce Golden; Ted & Kyle Groshong; Penny & Harry Hall; Linnet Harlan; Tim & Linda Harlan; Harlan, Harlan & Still; Donald & Joyce Harter; Elaine Hayes; Frank Koch & Laura Hutton; Phyllis Kempker; Alice Kliethermes; Sue Lee; Rebecca Livingston; Ron & Pat Martin; Richard & Jane McGuire; Laura Mueller; Marsha & John Nelson; Genny Perso; Jim & Toddy Persinger; Jamie and Cindy Potter; Phyllis Reeseman; Rhiannon Ross; Phil & Betty Rumbaoa; Kim Gage Ryan; Denise Schehl-Geiger; Hank Schnieder; Holly Hughes & Charles Stegner; John & Marla Stretz; Patricia Taylor; Janet Thompson; Don & Ann Wappelhorst; Derrick & Barbara Willard; and the Illinois School for the Deaf Administrative Council in honor of **Micah Bacus**



In Loving Memory

The NAMI Missouri family mourns the loss of Micah Harlan Bacus, a longtime friend of the mental health community. Like too many others, Micah died by suicide after a long battle with depression. Micah was known to NAMI Columbia members as someone who could always be counted on to lend a hand or a word of encouragement. He will be remembered for his kindness and for using his time on this earth to help others.

Board of Directors

- Diana Harper** - President
- Donald Schniepp** - First Vice President
- Rita McElhany** - Second Vice President
- Leslie Joslyn** - Secretary
- Eric Pahl** - Treasurer

- Rich Bennett • Debora Biggs
- Amy Hoffman • Anita Kiessling-Carver
- James Owen • Christine Patterson
- Dale Shotts

Staff

- Gena Terlizzi** - Executive Director
- Dawn Matthews** - Director of Operations
- Sonya Baumgartner** - Director of Family Services
- Alice Kliethermes** - Director of Consumer Services
- Kim Hoffman** - Special Projects Coordinator
- Nicole Baldwin** - Peer Services Coordinator
- Sharon Groner** - Warmline Phone Responder
- Jane Patten** - Warmline Phone Responder

Council Representatives

- Stephanie Appleby**
Peer Leadership Council
- Lemuel E. Kimes**
Service Members, Veterans and their Families Council

Affiliates

- | | | | |
|------------------|---------------------|--------------------------|-------------------------|
| NAMI Boonville | NAMI Jefferson City | NAMI Greater Kansas City | NAMI Southeast Missouri |
| NAMI Columbia MO | NAMI Joplin | NAMI St. Louis | NAMI Southwest Missouri |

Contact us: NAMI Missouri
3405 W. Truman Blvd. #102 • Jefferson City, MO 65109
Main 573-634-7727 • WARMLine 800-374-2138
namimissouri.org • info@namimissouri.org

Find us online



2019 Conference Recap

The 2019 NAMI Missouri Annual Conference was held in April and featured presentations by Keynote Speaker Amy Hoffman and Special Presenter Kyle Dooley, as well as awards and honors presented to members, volunteers and supporters whose dedication we depend on each and every day. During the event, members elected Anita Kiessling-Caver of Columbia and Christine Patterson of Lake St. Louis to their first terms on the NAMI Missouri Board of Directors. James Owen of Columbia and Don Schniepp of St. Peters were elected to second terms. Members also welcomed back Eric Pahl of Mokane, who will be serving his fourth term on the NAMI Missouri Board of Directors. Lemuel E. Kimes was elected to a first term as the NAMI Missouri representative on the NAMI Service Members, Veterans and Families Council. Members also approved revisions to the NAMI Missouri bylaws. Thank you to everyone who attended and please **save the date** for the NAMI Missouri 2020 Conference on **Sat., October 24, 2020** at the Capitol Plaza Hotel in Jefferson City.



THANK YOU TO OUR EVENT SPONSORS, SUPPORTERS AND RAFFLE DONORS

Compass Health Network
Sunovion Pharmaceuticals, Inc.

Cox Automotive

Missouri Mental Health Foundation

Safer Homes Collaborative

Missouri Telehealth Network

Missouri Protection & Advocacy Services

Greater Mid-MO American Found. for Suicide Prevention

Friend of NAMI Dale Shotts

AutoZone, Best Western Plus Capitol Inn, Bonkers Fun House, Brady's Paint and Glass, Colton's Steakhouse, Conservation Credit Union, Cracker Barrel, El Jimador, Golden Corral, Hy-Vee, IHOP, Kansas City Zoo, Longhorn Steakhouse, Lowe's Home Improvement, Mel's Diner, Missouri Botanical Gardens, Olive Garden, Red Lobster, Sam's Club, Silver Dollar City, Super Hair Salon, Titanic Museum, Veit's Pub & Grill, NAMI Greater Kansas City, NAMI Jefferson City, NAMI Joplin, NAMI Southwest Missouri, Alice Kliethermes, Amy Hoffman, Cindi Keele, Dale Shotts, Dawn Matthews, Debora Biggs, Diana Harper, Ed Bothe, Gena Terlizzi, Kayla Shelton, and Nicole Baldwin

AWARDS + HONORS

NAMI HALL OF FAME SILVER HONORS

Family Support Group Facilitators

Heidi Custin & Joe Custin

Family to Family Education Teacher

Sherry Fischer

In Our Own Voice Presenter

Alan Stoutz

Connections Support Group Facilitators

Ed Bothe & Alan Stoutz

NAMI HALL OF FAME GOLD HONORS

Family Support Group Facilitators

**Jack Bell, Barb French, Heather Harlan,
Mike Jones, Les Joslyn & Alice Kliethermes**

In Our Own Voice Presenters

Toni Flackmiller & James Nile

NAMI HALL OF FAME TRAINERS

Family to Family Teacher Trainer **Les Joslyn**

Family Support Group Facilitator Trainer **Mike Jones**

Courses

EDUCATION COURSES

NAMI Family to Family

NAMI Greater Kansas City - Kansas City

Tues. Sept. 3 - Tues. Nov. 19 @ 6:00 - 8:30 pm
Tri-County Mental Health Services
3100 NE 83rd St., Kansas City, MO
Register online at namimissouri.org/FTF

NAMI Greater Kansas City - Liberty

Tues. Sept. 3 - Tues. Nov. 19 @ 6:30 - 9:00 pm
Liberty Area Chamber of Commerce (Conf. Rm)
1170 W Kansas St., Liberty, MO
Register online at namimissouri.org/FTF

NAMI St. Louis – Troy

Mon. Aug. 26 - Mon. Oct. 21 @ 7:00 - 9:30 pm
Evangelical Presbyterian in Christ Church (EPIC)
651 Boone Street, Troy, MO
Register online at namistl.org

NAMI St. Louis - Hazelwood

Mon. Aug. 26 - Mon. Oct. 21 @ 6:00 - 8:30 pm
Walter's Walk
737 Dunn Road, Hazelwood, MO
Register online at namistl.org

NAMI St. Louis - St. Charles

Wed. Aug. 28 - Wed. Nov. 13 @ 6:30 - 9:00 pm
St. Charles Engineering & Surveying, Inc.
801 S. Fifth Street, St. Charles, MO
Register online at namistl.org

NAMI St. Louis - St. Louis

Wed. Aug. 28 - Wed. Nov. 13 @ 7:00 - 9:30 pm
Diversified Health & Wellness
11042 Manchester Rd., St. Louis, MO
Register online at namistl.org

NAMI St. Louis - St. Louis

Thurs. Aug. 29 - Thurs. Nov. 14 @ 7:00 - 9:30 pm
1st Cong. Church – Wydown Entrance
6501 Wydown, St. Louis, MO
Register online at namistl.org

NAMI St. Louis – St. Louis

Tues. Sept. 3 - Tues. Nov. 19 @ 6:00 - 8:30 pm
Hyland Education + Training Center (HETC)
10020 Kennerly Road, St. Louis, MO
Register online at namistl.org

NAMI Basics

NAMI Missouri - Cassville

Mondays & Thursdays; Oct. 7 - 28 @ 4:00 - 6:00 pm
First Baptist Church, 200 West 5th St., Cassville, MO
Register online at namimissouri.org/basics

NAMI St. Louis - Manchester

Thursdays, Sept. 12 - Oct. 17 @ 6:30 - 9:00 pm
Manchester UMC, 129 Woods Mill Rd., Manchester, MO
Register online at namistl.org

NAMI Missouri - Lebanon

Tuesdays & Thursdays; Sept. 10 - 26 @ 5:30 - 8:00 pm
Lebanon Laclede Library, 915 S. Jefferson Ave., Lebanon, MO
Register online at namimissouri.org/basics

NAMI St. Louis - St. Peters

Wednesdays, Sept. 25 - Oct. 30 @ 6:00 - 8:30 pm
Grace UCC, 8326 Mexico Road, St. Peters, MO
Register online at namistl.org

Mental Health and Allied Provider Workshop

NAMI Missouri will be holding a Provider Workshop at Cox Hospital in Springfield on Tuesday, September 24, 2019. Advance registration is required and lunch is provided at no cost. Continuing Education Units (CEUs) are available for this free 6-hour course, however you must attend the entire course to qualify for CEUs. Participants earn the equivalent of 5.7 Clock Hours, 6.9 Contact Hours, or .69 Continuing Education Units, which will be issued by the Missouri Institute of Mental Health (MIMH). The workshop is being offered through a contract with the Missouri Department of Mental Health. For additional information and to register, visit namimissouri.org/ProviderWorkshop.



Trainings

Trainings provide the tools and certifications you need to lead NAMI Missouri programs. These trainings are currently being offered at no cost to participants thanks to grant and contract funding from the U.S. Substance Abuse and Mental Health Services Administration (SAMHSA) and the Missouri Department of Mental Health. Trainings include hotel, meals, materials and instruction. Registration is required and courses do fill up.

FACILITATE A SUPPORT GROUP

Connection Support Groups

Connection Recovery Support Groups are for individuals living with mental health conditions. Attendees will become certified to serve as support group facilitators.

To learn more and apply, visit namimissouri.org/support.

NAMI Connection Recovery Support Group Facilitator Training

Best Western Plus Capital Inn, Jefferson City

Fri. Aug. 9 - Sun. Aug. 11, 2019

Application Deadline extended to July 25, 2019

(After July 25, contact us for wait list availability)

NAMI Family Support Groups

Family Support Groups are for family members of people living with mental illness. Attendees will become certified to serve as support group facilitators. To learn more and apply, visit namimissouri.org/support.

To learn more and apply, visit namimissouri.org/support.

NAMI Family Support Group Facilitator Training

Best Western Plus Capital Inn, Jefferson City

Sat. Sept. 7 - Sun. Sept. 8, 2019

Application Deadline - Aug. 5, 2019

(After Aug. 5, contact us for wait list availability)

FOR INFORMATION ON TRAINING OR OTHER OPPORTUNITIES

- Individuals with mental illness - contact Alice Kliethermes at alice@namimissouri.org
- Family members - contact Sonya Baumgartner at sonya@namimissouri.org

Not sure who to contact? Email info@namimissouri.org and we'll get you to the right place!

Missouri Child Psychiatry Access Project

An innovative new project is working to address the problems caused by a shortage of child psychiatrists. The Missouri Child Psychiatry Access Project (MO-CPAP) provides child psychiatrists for free phone consultations with pediatricians and other primary care providers who treat children with mental health disorders. The program operates in 15 eastern and central Missouri counties and launches statewide in October 2020.

Ending the Silence for Students

Ending the Silence for Students is a new mental health awareness program for high school students. NAMI Missouri is pleased to share that 13 people were certified as presenters at our statewide presenter training in June. This training was provided thanks to the support of the Edwin and Barbara Krigel Trust.

Federal Funding renewed for 3 years

NAMI Missouri has received the SAMHSA Statewide Consumer Network Grant for 2019-2021. This grant covers consumer trainings and programs, including In Our Own Voice program trainings and presentations, NAMI Connection Recovery Support Group facilitator trainings and the Annual Partners in Policy training and advocacy day activities.



NAMI Missouri Staff Photo

Back row from left: Sharon Groner, Alice Kliethermes, Nicole Baldwin, Jane Patten

Front row from left: Dawn Matthews, Gena Terlizzi, Kim Hoffman, Sonya Baumgartner

Support Groups

NAMI Family Support Groups

For family members of individuals with mental illness or mental health concerns

NAMI Boonville

Boonville - Family Support group
Monthly - 2nd Tuesday @ 6:30-8:00 pm
Nelson Memorial United Methodist Church
407 E. Spring St., Boonville
Email: namiboonville@gmail.com

NAMI Columbia MO

Columbia - Family Support Group
Monthly - 2nd Monday @ 6:30-9:00 pm
Presentation @ 6:30; Group @ 7:30 pm
Unity Center, 1600 W Broadway, Columbia
Contact: Tim Harlan, 573-874-2402
Email: tharlan@harlan-still.com

NAMI Joplin

Joplin - Family Support Group
Monthly - 2nd Tuesday @ 6:30-8:00 pm
NAMI Joplin Office
1601 S Wall Ave., Joplin
Contact: 417-781-6264
Email: namijoplin@cableone.net

NAMI Southeast Missouri

Farmington - Family Support Group
Monthly - 2nd Thursday @ 7:00-8:30 pm
Farmington Public Library
101 North A St., Farmington
Call/text: 573-454-1221
Email: namisoutheastmo@gmail.com

NAMI Southwest Missouri

Springfield - Family Support Group
1st & 3rd Mondays @ 7:00-8:30 pm
NAMI Southwest Missouri Office
1443 N Robberson #408, Springfield
Contact: Les Joslyn, 417-839-4682
Email: ljoslyn@sbcglobal.net

Bolivar - Family Support Group

Monthly - 4th Thursday @ 1:30-3:00 pm
Polk County Health Center
1317 W Broadway St., Bolivar
Contact: Marilyn Kinnett, 417-327-5609
Email: kinnetttrucking@windstream.net

NAMI Basics Support Groups are Family Support Groups that place a special emphasis on support for parents and caregivers of children, teens and young adults with behavioral and mental health concerns.

NAMI Greater Kansas City

Lee's Summit - Basics Support Group
Monthly - 3rd Tuesday @ 6:00-8:00 pm
ReDiscover Mental Health
1555 NE Rice Rd. #1595 Bldg. A, Lee's Summit
Email: namibasics@yahoo.com

NAMI Jefferson City

Jefferson City - Family Support Group
Monthly - 1st Monday @ 6:30-8:30 pm
Presentation @ 6:30; Group at 7:30 pm
Central United Church of Christ
118 W Ashley Street, Jefferson City
Email: namijcmo@gmail.com

NAMI Greater Kansas City

Belton - Family Support Group
2nd & 4th Mondays @ 6:30-8:30 pm
Belton Regional Medical Center
17065 S. 71 Hwy, Belton
Contact: Pam and Holly
Email: NAMI-leaders@hotmail.com

Belton - Family Support Group

1st & 3rd Mondays @ 6:30-8:00 pm
LifeQuest Church, 1400 N Scott Ave, Belton
Email: krevert@att.net

Kansas City - Family Support Group

1st & 3rd Thursdays @ 6:00-8:00 pm
Research Psychiatric Center
2323 E 63rd Street, Kansas City, Mo
Contact: Joe & Heidi Custin
Email: custinh@yahoo.com

KC (Northland) - Family Support Group

Monthly - 3rd Wednesday @ 6:00-7:30 pm
3100 NE 83rd St., Kansas City (2nd fl)
(Also meets on 1st Wed for presentations)
1st Wed in River Rm; 3rd Wed in Conf. Room
Contact: Candis Desselle, 816-468-0400
Email: candisd@tri-countymhs.org

Lee's Summit - Family Support Group

Monthly - 1st Wednesday @ 7:00-8:30 pm
ReDiscover, Mental Health Clinic
901 Independence Ave, Lee's Summit
Contact: Frank Bair, 816-763-9320
Email: fbair1@att.net

NAMI St. Louis

NAMI St. Louis Support Groups
are listed below. If no contact information is provided for a St. Louis area support group, contact 314-962-4670 or info@namistl.org. Full NAMI St. Louis support group lists and details are online at www.namistl.org/support-groups

Arnold - Family Support Group

Monthly - 1st Thursday @ 7:00-8:30 pm
New Hope UMC, Rm 106
(Enter through white doors in back)
3921 Jeffco Blvd, Arnold
Contact: Russell or JoAnn, 314-293-1512
Email: joannechartley@gmail.com

Chesterfield - Family Support Group

Monthly - 3rd Monday @ 7:00-8:30 pm
Trinity Lutheran Church, Rm 258
14080 Clayton Rd, Chesterfield
Contact: Jerry Spector, 636-532-0027
Email: jbs1111@sbcglobal.net

Clayton - Family Support Group

Monthly - 3rd Tuesday @ 7:00-8:30 pm
First Congregational Church
6501 Wydown Blvd., Clayton

Kirkwood - Family Support Group

Monthly - 4th Thursday @ 7:00-8:30 pm
Kirkwood United Methodist Church Rm. 115
201 W Adams, Kirkwood

Kirkwood - Family Support Group

Monthly - 4th Wednesday @ 7:00-8:30 pm
Elliot Chapel, 100 S Taylor Ave., Kirkwood
Email: fogy65@yahoo.com

Maplewood - Family Support Group

Monthly - 1st Thursday @ 7:00-8:30 pm
Christ Church, 2200 Bellevue Ave., Maplewood

St. Charles - Family Support Group

Monthly - 1st Thursday @ 7:00-8:30 pm
NAMI St. Louis Tri-County Office
200 S Kingshighway #101, St. Charles
Contact: Bonnie, 314-974-4694
Email: bcran0228@aol.com

St. Peters - Family Support Group

Monthly - 3rd Tuesday @ 7:00-8:30 pm
Grace United Church of Christ
8326 Mexico Rd, St. Peters

Webster Groves - Fam Supp Group

Monthly - 2nd Tuesday @ 6:30-8:00 pm
Webster Hills United Methodist Church
Christian Life Center, Library Room
698 W Lockwood, Webster Groves
Contact: Judy Larson, 314-922-4693
Email: judyclarson@gmail.com

Support Groups

NAMI Connection Recovery Support Groups

For individuals living with mental illness or mental health concerns

NAMI Columbia MO

Columbia

Connection Recovery Support Group

Monthly - 2nd Monday @ 6:30-9:00 pm
Presentation @ 6:30; Group @ 7:30
Unity Ctr, 1600 W Broadway, Columbia
Contact: Tim Harlan, 573-874-2402
Email: tharlan@harlan-still.com

NAMI Jefferson City

Jefferson City

Connection Recovery Support Group

Monthly - 1st Monday @ 6:30-8:30 pm
Presentation @ 6:30; Group @ 7:30
Central United Church of Christ
118 W Ashley Street, Jefferson City
Email: namijcmo@gmail.com

Jefferson City

Connection Recovery Support Group

Monthly - 3rd Tuesday @ 6:00-8:00 pm
Wesley United Methodist Church
2727 Wesley St., Jefferson City
(Enter through back doors)
Email: namijcmo@gmail.com

NAMI Joplin

Joplin

Connection Recovery Support Group

Every Tuesday @ 6:30-8:00 pm
NAMI Joplin Office, 1601 S Wall Ave, Joplin
Contact: 417-781-6264
Email: namijoplin@cablone.net

Joplin

Connection Recovery Support Group

2nd & 4th Wednesdays @ 2:00-3:00 pm
NAMI On Campus at MSSU - Hearn Hall
3950 E Newman Rd, Joplin
Contact: Kandace Logan, 417-625-9830
Email: logan-k@mssu.edu

NAMI Greater Kansas City

Midtown Kansas City

Connection Recovery Support Group

Every Tuesday @ 7:15-8:30 pm
Westport Presbyterian Church
201 Westport Rd, Kansas City, Mo
Email: violamom@gmail.com (Patty)

Lee's Summit

Connection Recovery Support Group

Every Tuesday @ 7:00-8:30 pm
1st Presbyt. Church - Basement Rm 100
1625 NW Obrien Rd, Lee's Summit
Contact: Marty Sexton, 816-738-3066
Contact: Tricia Wear, 816-810-1414
Email: help4distress@gmail.com

Belton

Connection Recovery Support Group

1st & 3rd Mondays @ 6:00-8:00 pm
LifeQuest Church
1400 N Scott Ave, Belton
Email: allaboutrockillc@yahoo.com
Email: teegarden.shawn@icloud.com

Gladstone

Connection Recovery Support Group

Every Tuesday @ 6:30-8:00 pm
Northland Behavioral Health & Wellness
119 NE 72nd St., Gladstone
Contact: Gabriel, 816-200-7424
Email: gabrielnamiconnection@gmail.com

St. Joseph

Connection Recovery Support Group

Every Thursday @ 7:00 pm
Missouri Care
3831A Frederick Ave., St. Joseph
Contact: Kevin Williams, 727-543-9408
Email: kevinwilliams.clnc@gmail.com

NAMI St. Louis

NAMI St. Louis Support Groups

are listed below. If no contact information is provided for a St. Louis area support group, contact 314-962-4670 or info@namistl.org. Full NAMI St. Louis support group lists and details are online at www.namistl.org/support-groups

Clayton

Connection Recovery Support Group

Monthly - 3rd Saturday @ 2:00 - 3:00 pm
First Cong. Church. 1st floor parlor
6501 Wyndown Blvd., Clayton

St. Charles

Connection Recovery Support Group

Every Monday @ 6:30-8:00 pm
Friedens United Church of Christ
1703 Old Hwy. 94 South, St. Charles
Contact: Jim Eyman, 314-808-5551
Email: jeymanjr@prodigy.net

St. Louis (Delmar)

Connection Recovery Support Group

1st & 3rd Sundays @ 2:00-3:30 pm
Grace and Peace Fellowship Church
5574 Delmar, St. Louis
Contact: Rose Schulte, 314-716-2210
Email: roseschulte@gmail.com

St. Peters

Connection Recovery Support Group

Monthly - 3rd Tuesday @ 7:00-8:30 pm
Grace United Church of Christ
8326 Mexico Rd, St. Peters

NAMI Southeast Missouri

Sikeston

Connection Recovery Support Group

Thursdays at 5:30 pm
Sandy Paws, 134 E. Front St., Sikeston
Email: pezmama3@gmail.com

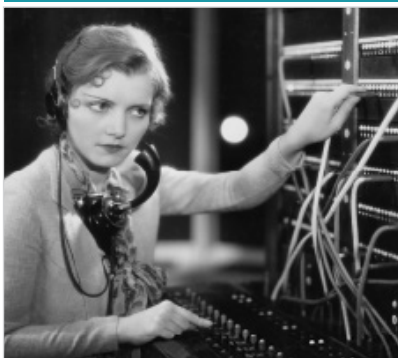
NAMI Southwest Missouri

Springfield

Connection Recovery Support Group

Every Tuesday @ 10:00-11:30 am
The Hope Center
1443 N Robberson Ave, #408, Springfield
Contact: 417-864-3027
Email: nami@namiswmo.com

Full NAMI Missouri support group listings online at namimissouri.org/support



Peer support and resources
are available through the
NAMI Missouri WARMLINE
800-374-2138

**9am – 5pm on weekdays, and
3pm – 9pm on weekends and holidays**

**GOOD SUPPORT NEVER
GOES OUT OF STYLE**

▶ Visit namimissouri.org/warmline to learn more.

Springfield & Surrounding Area
Support group sessions are held daily at the Hope Center in Springfield, and weekly in Bolivar, Branson, Lebanon and Springfield.
The complete list is at:
namiswmo.com/services/support



NAMI Missouri
 3405 W. Truman Blvd. #102
 Jefferson City, MO 65109

Non-Profit Org.
 U.S. Postage
PAID
 Jefferson City, MO
 Permit No. 390

Join NAMI Missouri or renew today!

Every member strengthens our efforts. If your membership has expired, renewal is easy, and if you're not a member yet, join today! Members receive the NAMI Missouri Newsletter, NAMI Advocate magazine and discounts to attend NAMI events. Even better, your membership helps provide services to individuals living with mental health conditions and their family members.

New Member **Renewal**

Enclosed are my dues for (check one):

- | | |
|---|---|
| <input type="checkbox"/> Individual (\$40) | <input type="checkbox"/> Total Dues \$ _____ |
| <input type="checkbox"/> Family/Household (\$60) | <input type="checkbox"/> Additional Contribution \$ _____ |
| <input type="checkbox"/> Open Door/Limited Income (\$5) | <input type="checkbox"/> Total Enclosed \$ _____ |

Name(s) _____

Address _____

Phone _____ Email _____

Credit Card: Visa MasterCard Discover

Card # _____

Exp. Date _____ / _____

Cardholder Name _____

Cardholder Address _____

Send form and payment to:
NAMI Missouri
 3405 W. Truman Blvd. #102
 Jefferson City, MO 65109