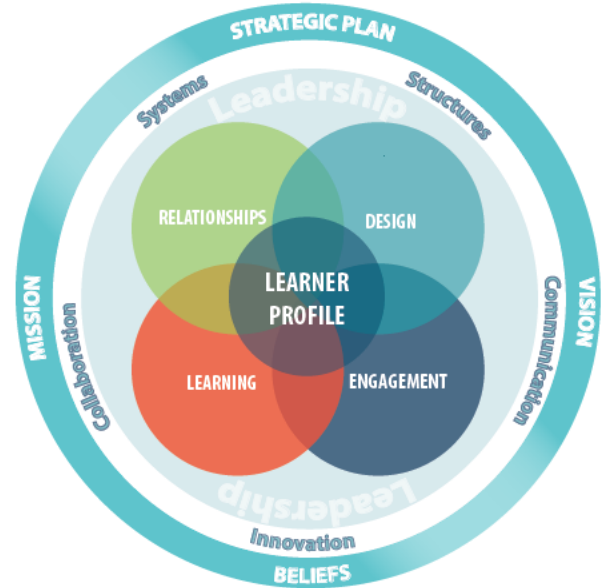


# Career & Technical Education

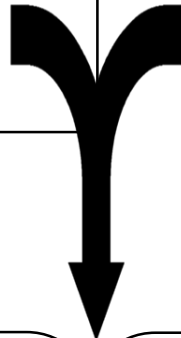


## STRATEGIC FRAMEWORK



### The Georgetown ISD learner...

- Communicates, collaborates, and applies critical thinking.
- Creates and innovates.
- Obtains knowledge through inquiry and exploration.
- Adapts and perseveres.
- Develops self-knowledge and personal responsibility.
- Builds and models respectful relationships.



### Relationships

CTE programs & pathways lead to consistency with teachers; enabling the development of healthy, respectful relationships. *CTSO participation encourages team-building skills.*

### Design

Lesson design allows students to find meaning & value. *Pathway design ensures: CTSO opportunities and, certifications, reinforcing college & career readiness skills.*

### Learning

CTE courses inherently allow students to obtain knowledge through inquiry & exploration; with the permission to create & innovate. *CTSO skills contribute to educating the whole child.*

### Engagement

CTE programs foster environments in which students want to learn what they are expected to learn. *CTSO involvement strengthens student engagement of attentive, persistent, committed behavior.*

