

Sandy Beach & Robert Tedford Memorial Park Master Plan

Ellington, CT

Public Meeting #1

February 27, 2024





AGENDA

01

Introductions

02

Schedule

03

Evaluation & Field Use Inventory

04

Survey



Jon Tunsky, RLA, CPSI

Project Manager
Landscape Architect



Ryan Chmielewski, RLA, CPSI

Team Leader
Landscape Architect

Town of Ellington:

Dustin Huguenin, Recreation Director

Mary Bartley, Assistant Director of Recreation

Thomas Modzelewski, Public Works Director John

Colonese, Planning & Zoning

Kevin Barrett, Recreation Coordinator

Cynthia Costanzo, Recreation Commission

Cheri Murphy, Recreation Commission

About Weston & Sampson

Weston & SampsonSM
design studio



SINCE
1899

120+ years in business



Interdisciplinary design,
engineering, and
environmental services



Over 850 professional staff



Offices along the East Coast

- Master Planning
- Parks & Playgrounds
- Institutional
- Sports & Recreation
- Community Engagement
- Multi-use Paths & Complete Streets
- Urban Design



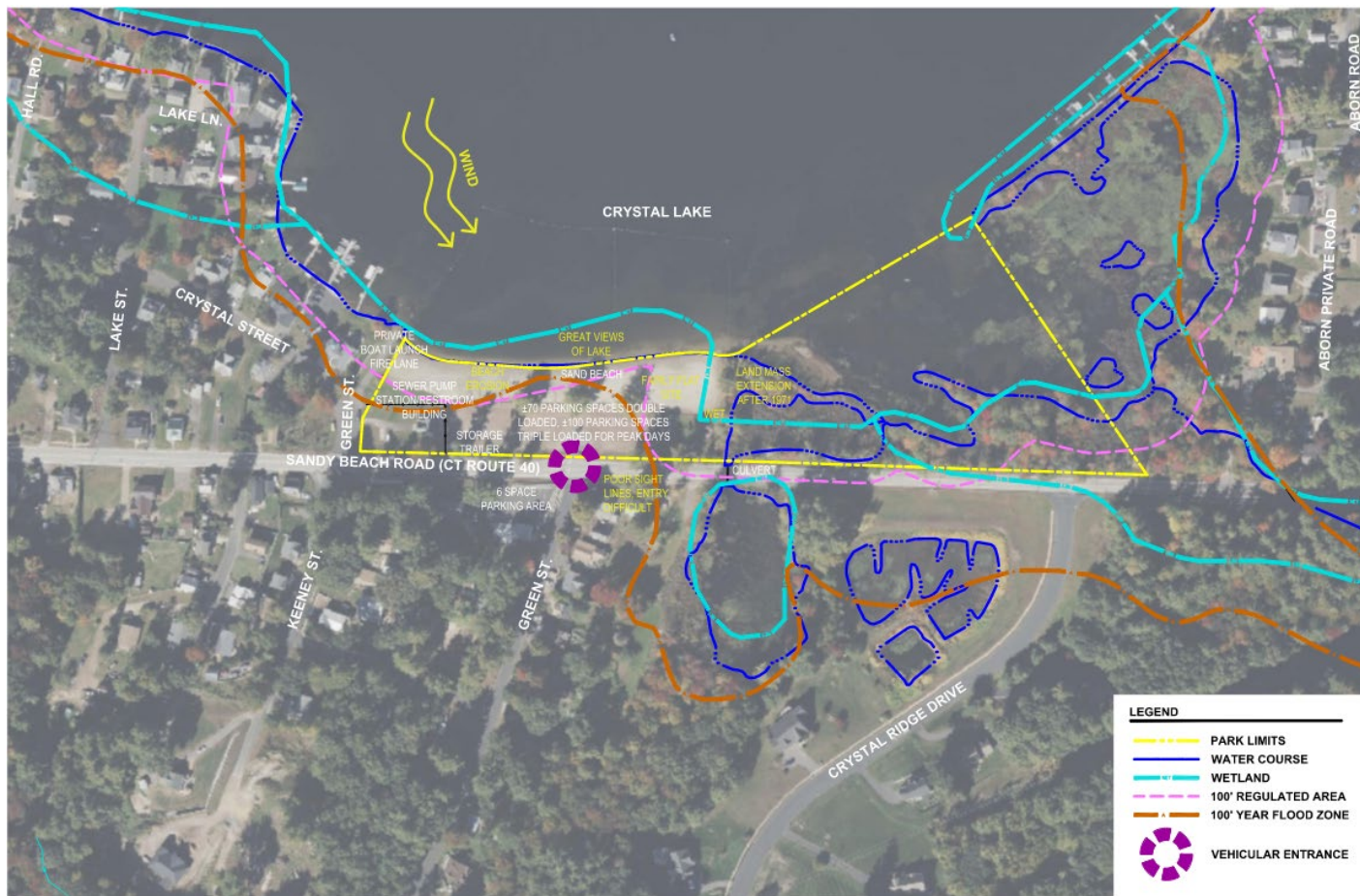
Schedule

TASK	DATE
Survey	2/14-3/11
Public Meeting #1: Evaluation	2/27
Public Meeting #2: Survey/Preliminary Master Plan	4/20 (Earth Day)
Public Meeting #3: Master Plan	5/14
Final Master Plan	5/31

Evaluation: Sandy Beach



Evaluation: Sandy Beach



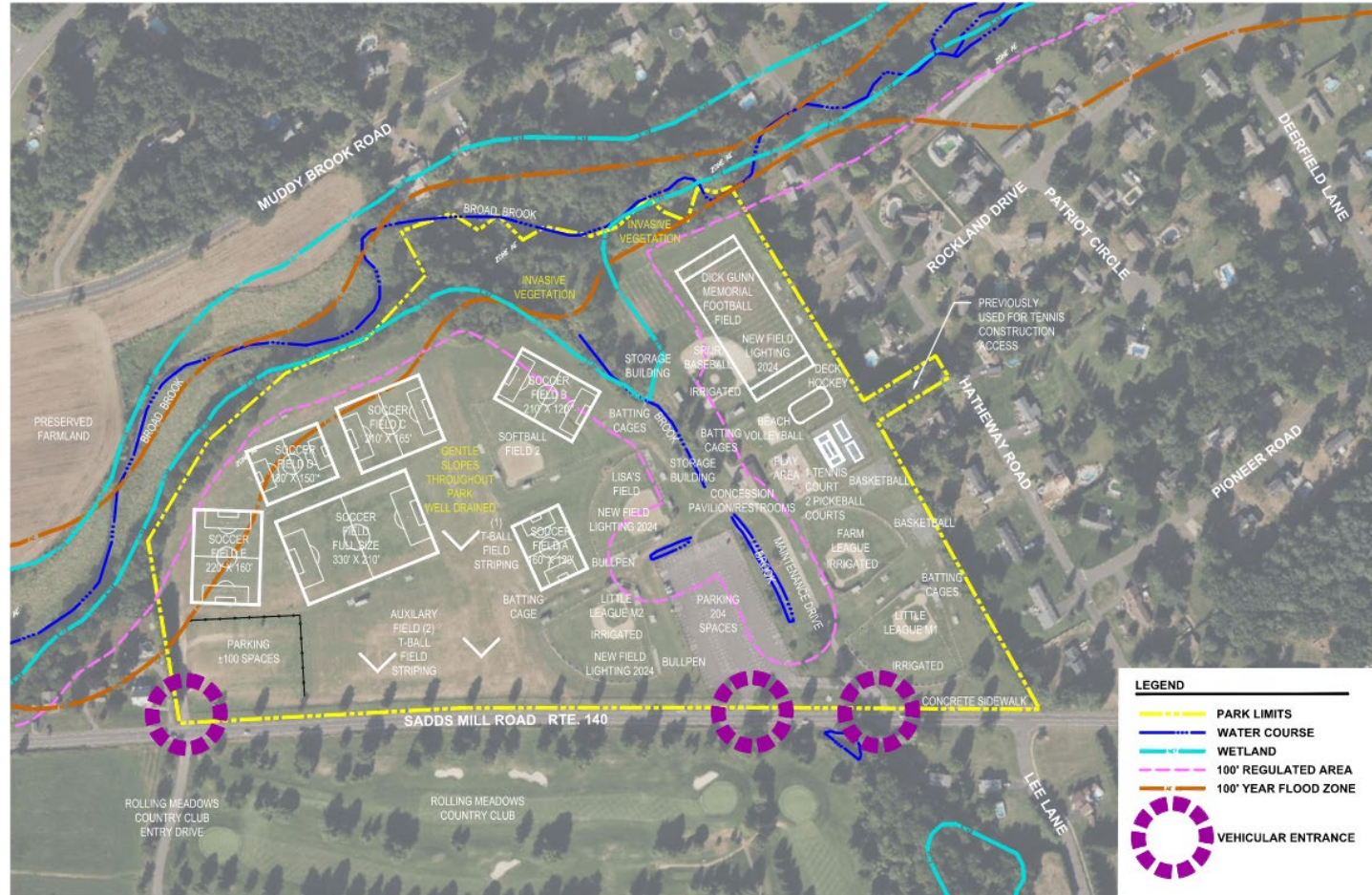
Evaluation: Robert Tedford Park



Evaluation: Robert Tedford Park



Evaluation: Robert Tedford Park



- Rectangular Fields (Fall and Spring)
- Diamond Fields (Spring)

Ellington Field Use Inventory Chart - Diamond Fields (Spring)

DEMOGRAPHICS															
Organization	Sport	Age Group	# of Teams	Basepaths	Field Size (pitching distance)	Practice Field	# of Practices/ Week	Hours Per Practice	Game Field	# of Home Games Per Week	Hours Per Game	# of Weeks in Season	Total Practice Hrs	Total Game Hrs	Total Hrs
Girls Softball	Softball	Rookies	3	60'	35	Windermere	2	2	Windermere	2	2	16	64	64	128
Girls Softball	Softball	Minors	2	60'	35	Czyz Field	2	2	Czyz Field	2	2	16	64	64	128
Girls Softball	Softball	Majors	2	60'	40	Lisa Field	2	2	Lisa Field	2	2	16	64	64	128
Girls Softball	Softball	Juniors/Seniors	1	60'	40	Lisa Field	1	2	Lisa Field	1	2	16	32	32	64
Girls Softball	Softball	Juniors/Seniors	1	60'	43	EMS Softball	1	2	EMS Softball	1	2	16	32	32	64
Girls Softball	Softball	Fall Ball	2	60'	35	Czyz Field	2	2	Czyz Field	2	2	8	32	32	64
Girls Softball	Softball	Fall Ball	2	60'	40	Lisas Field	2	2	Lisas Field	2	2	8	32	32	64

Field Use Inventory

Ellington Field Use Inventory Chart - Annual Hours of Use

Facility	Field	Total Annual Hours of Use
Tedford Park	Tedford A	57
Tedford Park	Tedford C	174
Tedford Park	Tedford D	174
Tedford Park	Tedford E	165
Tedford Park	Tedford Full	221.25
Windermere	Windermere	75
Pinney Park	Pinney A	84
Pinney Park	Pinney B	54
Pinney Park	Pinney C	30
Pinney Park	Pinney Full	40
Subtotal Pinney A, B, C, Full (Same Field)		208
Pinney Park	Pinney Medium	84
Pinney Park	Bantam 1	80
Pinney Park	Bantam 2	85
Subtotal Pinney Medium, Bantam 1, Bantam 2 (Same Field)		249
EHS	High School	75
EMS	Ellington Middle School	30
CLS	Crystal Lake Elementary	30
Tedford Park	Grass Fields (3)	275
Tedford Park	Farm	110
Tedford Park	M2	418
Tedford Park	M1	462
Tedford Park	Juniors Field	266
Tedford Park	Tedford Football Field	752
Tedford Park	Windermere Softball	128
Tedford Park	Czyz Field	192
Tedford Park	Lisa's Field	192
EMS	Ellington Middle School Softball	64

North Carolina State University Expected Field Condition Based on Hours of Field Use				
Condition	Hrs Per Year		Hrs Per Week	
	Min	Max	Min	Max
Sustained Good Field Conditions	0	200	0	8
Good Field Conditions with some Thinning of Turf and Localized Wear Areas	400	600	15	23
Fair Field Conditions; Expect Significant Thinning and Wear	800	1000	31	38
Poor Field Conditions with Significant Turf Loss, Field Surface Damage, and Increased Potential for Athlete Injury	1000		38	

516 hrs @ 15 hrs/week

680 hrs @ 23 hrs/week

824 hrs @ 30 hrs/week

<https://www.research.net/r/EllingtonCT>

- 9 minutes
- 21 Questions
- tunsky.jonathan@wseinc.com

5. Have you or anyone in your household visited Sandy Beach in the past year?

- ☐ Yes, 1-5 visits
- ☐ Yes, 6 or more visits
- ☐ No



TASK	DATE
Survey	2/14-3/11
Public Meeting #1: Evaluation	2/27
Public Meeting #2: Survey/Preliminary Master Plan	4/20 (Earth Day)
Public Meeting #3: Master Plan	5/14
Final Master Plan	5/31

- Close Survey 3/11
- Preliminary Master Plans 4/20 at Earth Day



Thank you!
Questions?

westonandsampson.com

Weston (&) SampsonSM