



TM

Population Estimates and Forecasts

Mesa

Elizabeth Garner

May, 2023

State Demography Office, Department of Local Affairs

[Demography.dola.colorado.gov](https://demography.dola.colorado.gov)



COLORADO

Department of Local Affairs

State Demography Office

demography.dola.colorado.gov

- Population
 - Estimates - program planning and funding allocation
 - Census Bureau Partner **(NOTE: MORE CENSUS 2020 data to be released May 30th)**
 - Projections - forecasts - program planning
 - Characteristics
 - Labor Force
- Economics
 - Estimates, forecasting
 - Bridging the economy and population
- GIS/Cartography/Mapping
 - Special districts
 - Support to Census, municipalities, others for mapping
 - Data visualization
- Technical Assistance, training, outreach
 - State Data Center - Census Bureau
 - Other states have these same offices



Trends

- Jobs, labor force, population, age, housing - **connected**
- Population growing at a slowing rate - births down, deaths up
- Migration and mobility slowing
 - Harder to attract and retaining the best and brightest.
 - Labor tight - very competitive in US
- Concentrated growth in Metro areas
- Aging - impacts everything... including the economy, labor force, housing, and public finance.
 - Largest share of future growth is the 65+
 - Retirements create demand for new workers



Big Picture

Growth is Slowing

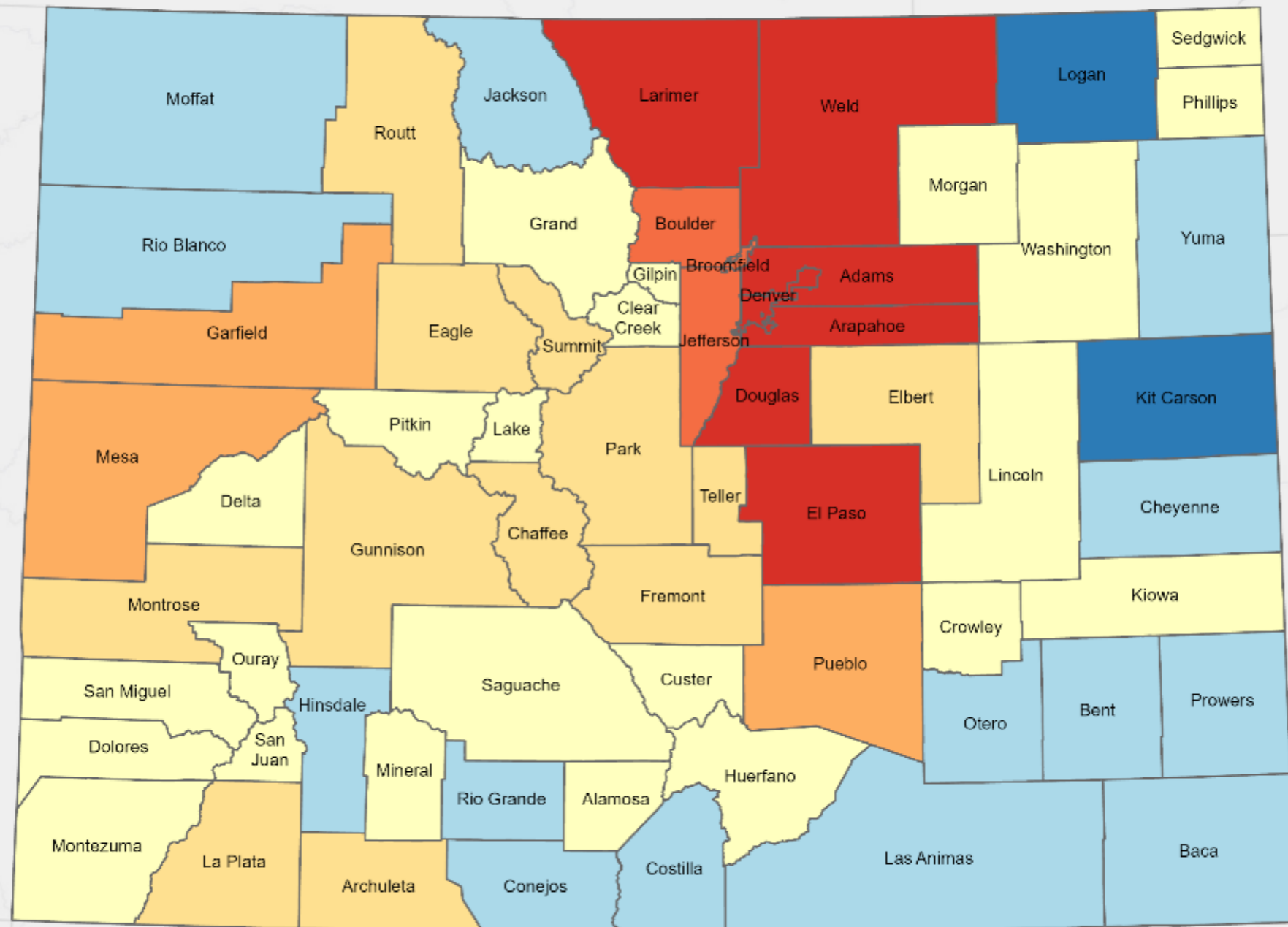
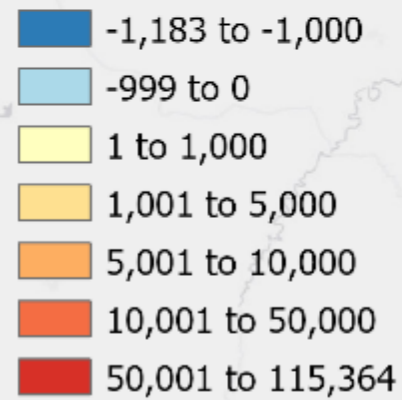
	2010-2020		2020-2021		2021-2022	
United States	22.3MM	7.4%	520k	0.1%	1.256MM	0.4%
Colorado	744.5k	14.8%	26.5k	0.5%	27.7k	0.5%
Colorado Rank	9th	6th	11th	20th	12th	19th

- 2010 - 2020
 - Second slowest decade for US in terms of growth
- 2020 - 2021
 - Slowest year for US growth rate;
 - 17 states lost population
- 2021 - 2022
 - 19 states lost population



Population Change by County 2010 to 2020

Population Change



Source: 2020 US Census

Esri, HERE, Garmin, USGS, EPA, NPS



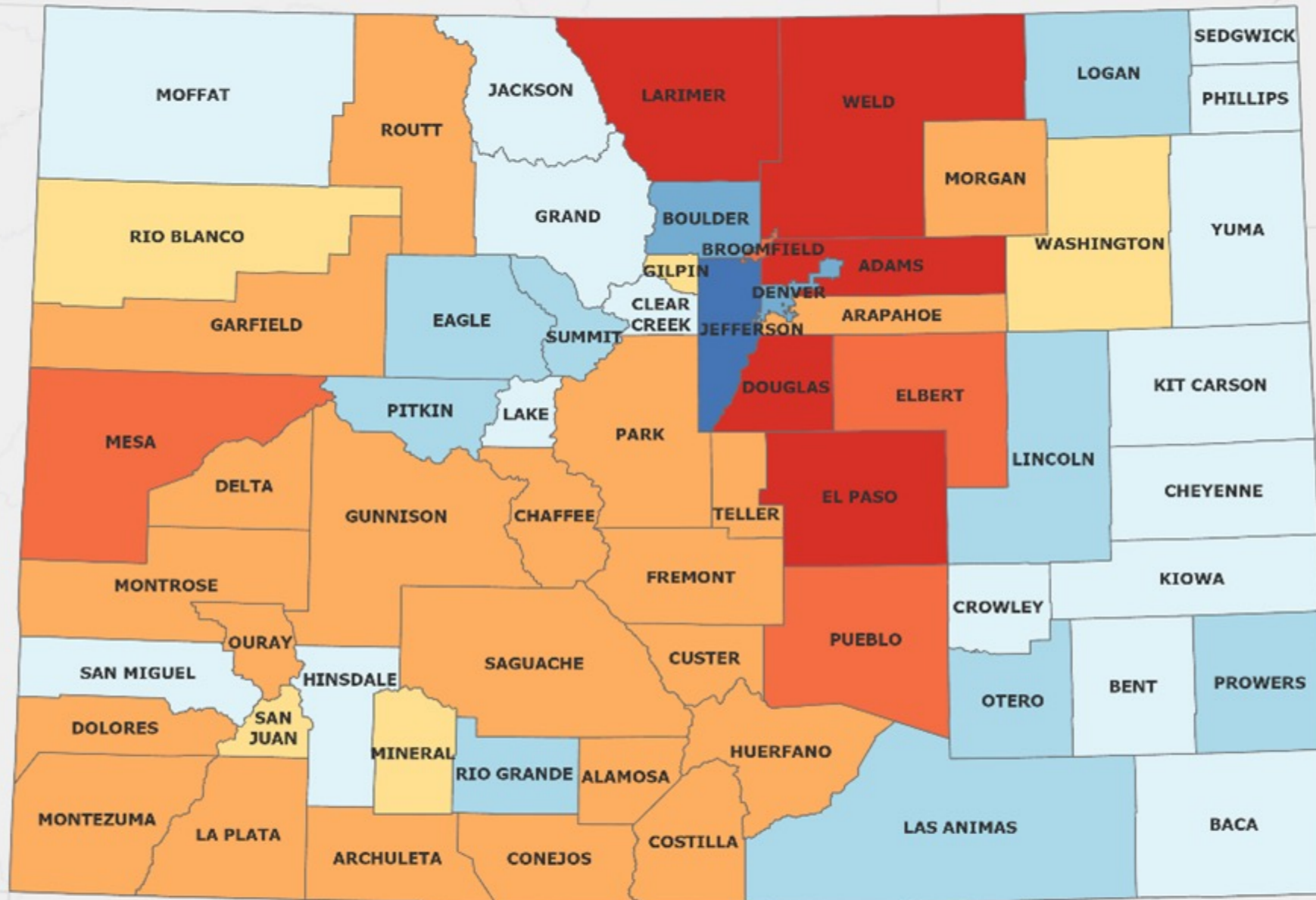
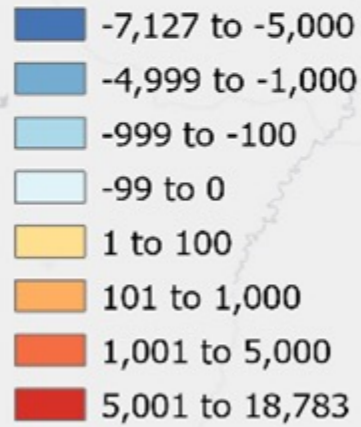
COLORADO
Department of Local Affairs

Source: U.S. Census Bureau, 2010 and 2020 Censuses

Total Population Change

2020 - 2022

Population Change



Source: Colorado State Demography Office

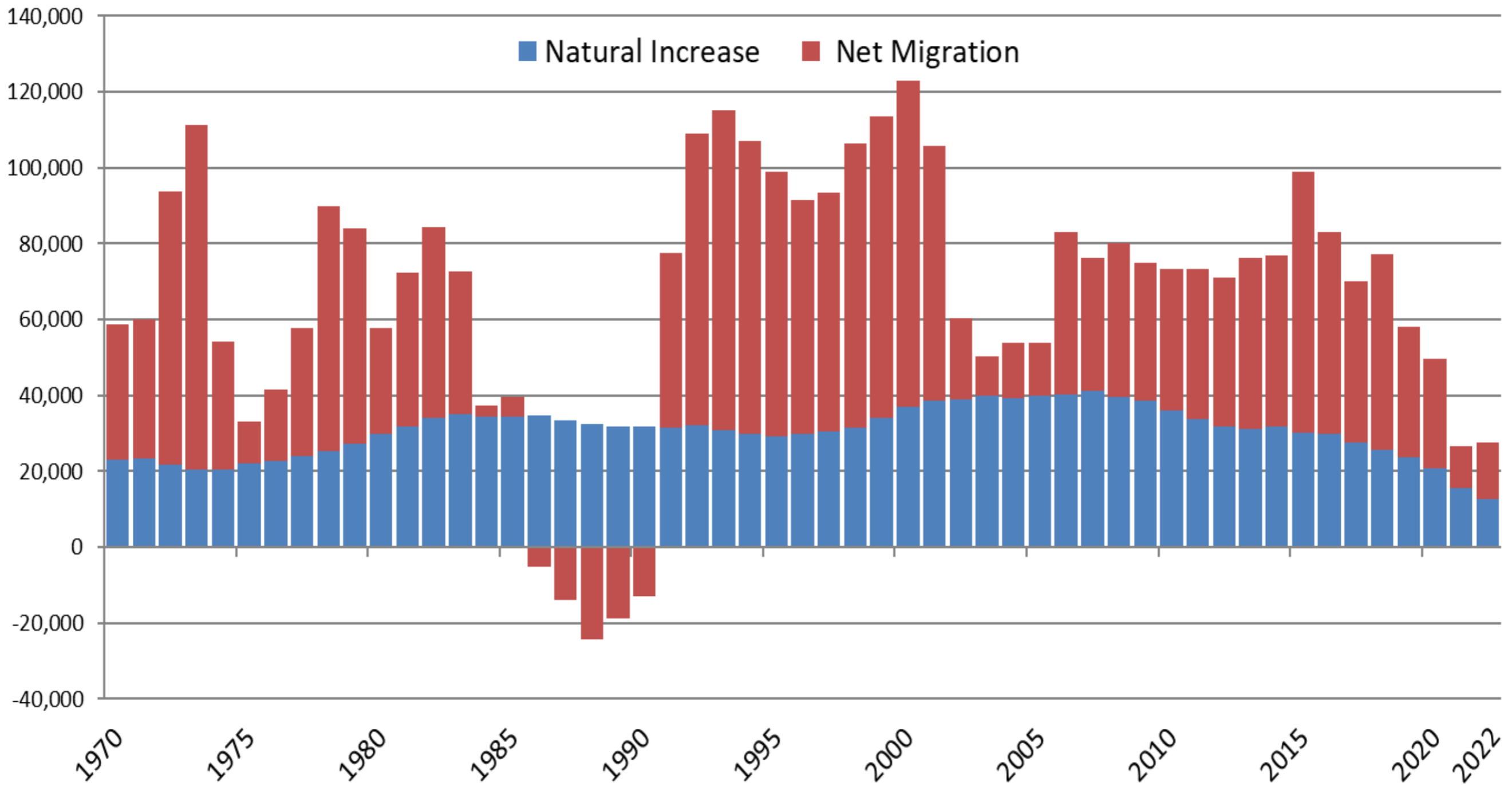
April 2023

2020 to 2022 - Front Range Growth 75% of total. 28 counties lose population.



COLORADO
Department of Local Affairs

Components of Colorado Population Change 1970-2022



2010-2020

Births - 648,000

Deaths - 362,000

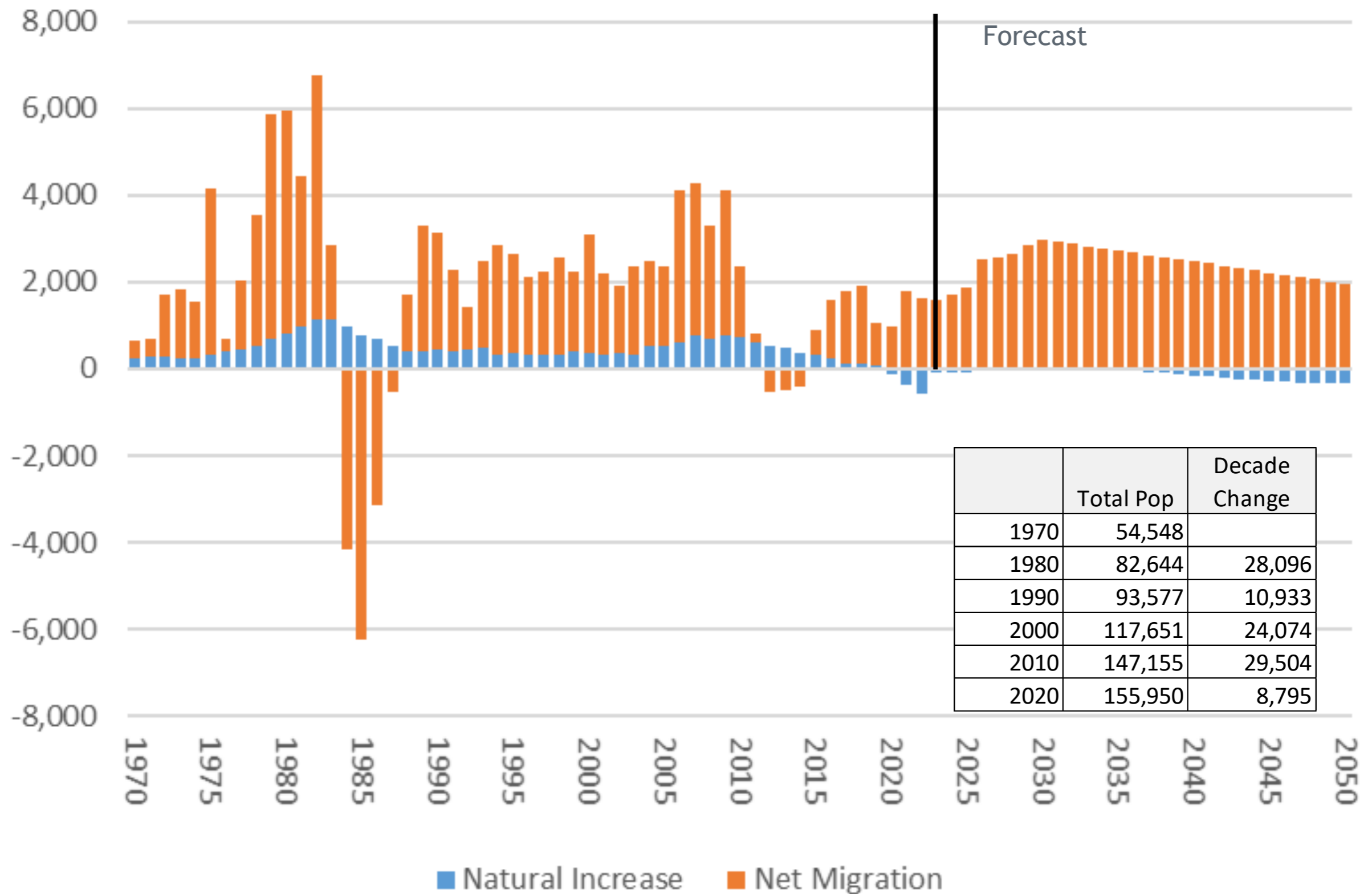
Net Migration - 445,000



COLORADO
Department of Local Affairs

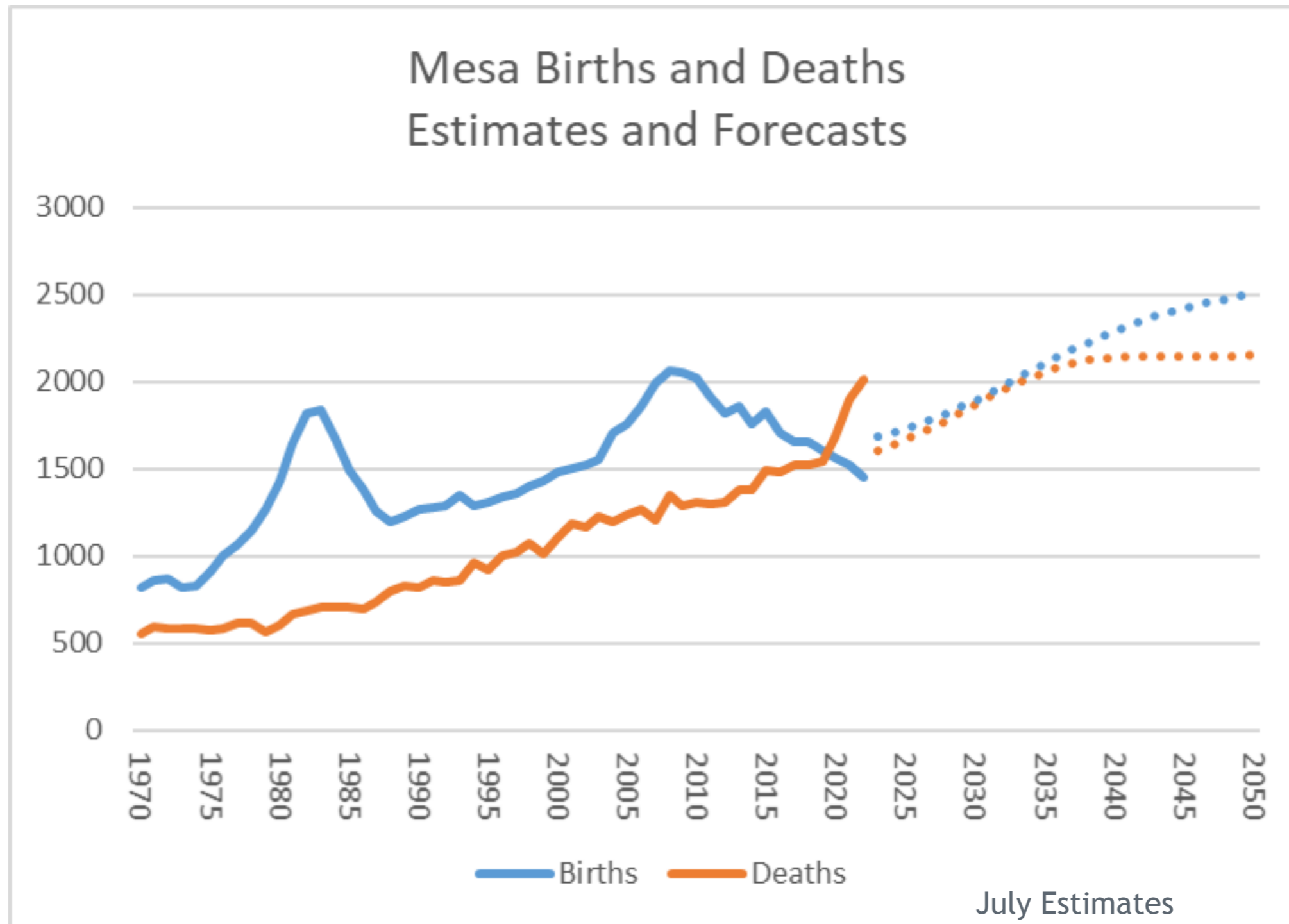
Source: State Demography Office

Components of Change Mesa

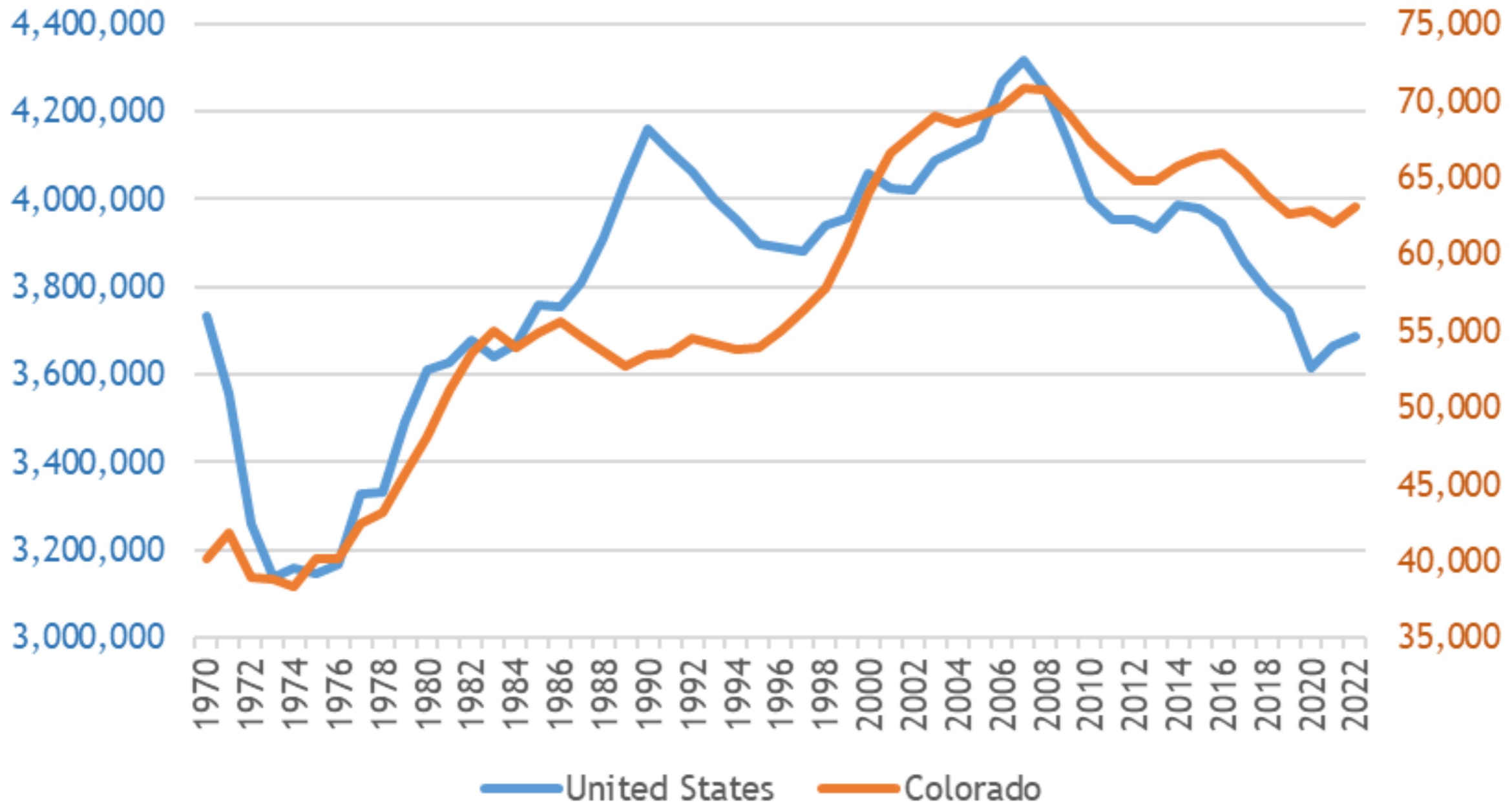


Births and Deaths, 1970-2021

Mesa County



Births in Colorado and the US



Peak Births in 2007, currently 15-16 years old

Peak Millennial is 29 years old

More women of childbearing age yet:

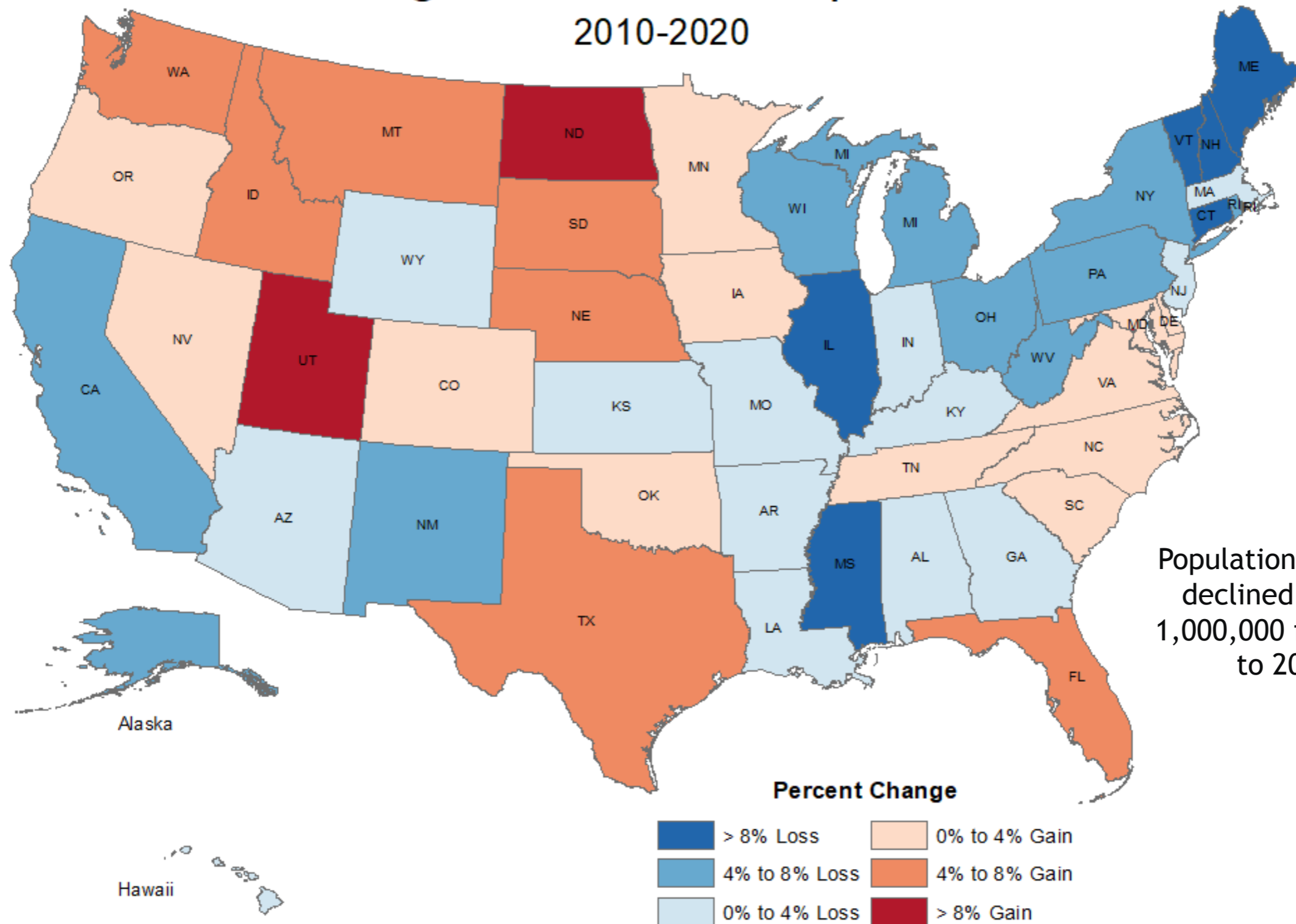
628,000 (US) and 8,000 (CO) fewer births in 2022 than 2007



COLORADO

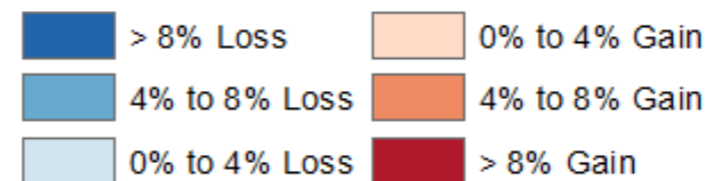
Department of Local Affairs

Change in Under 18 Populations 2010-2020



Population Under 18
declined by over
1,000,000 from 2010
to 2020.

Percent Change



Source: US Census Bureau
Map by Colorado State Demography Office

Created October 13, 2021

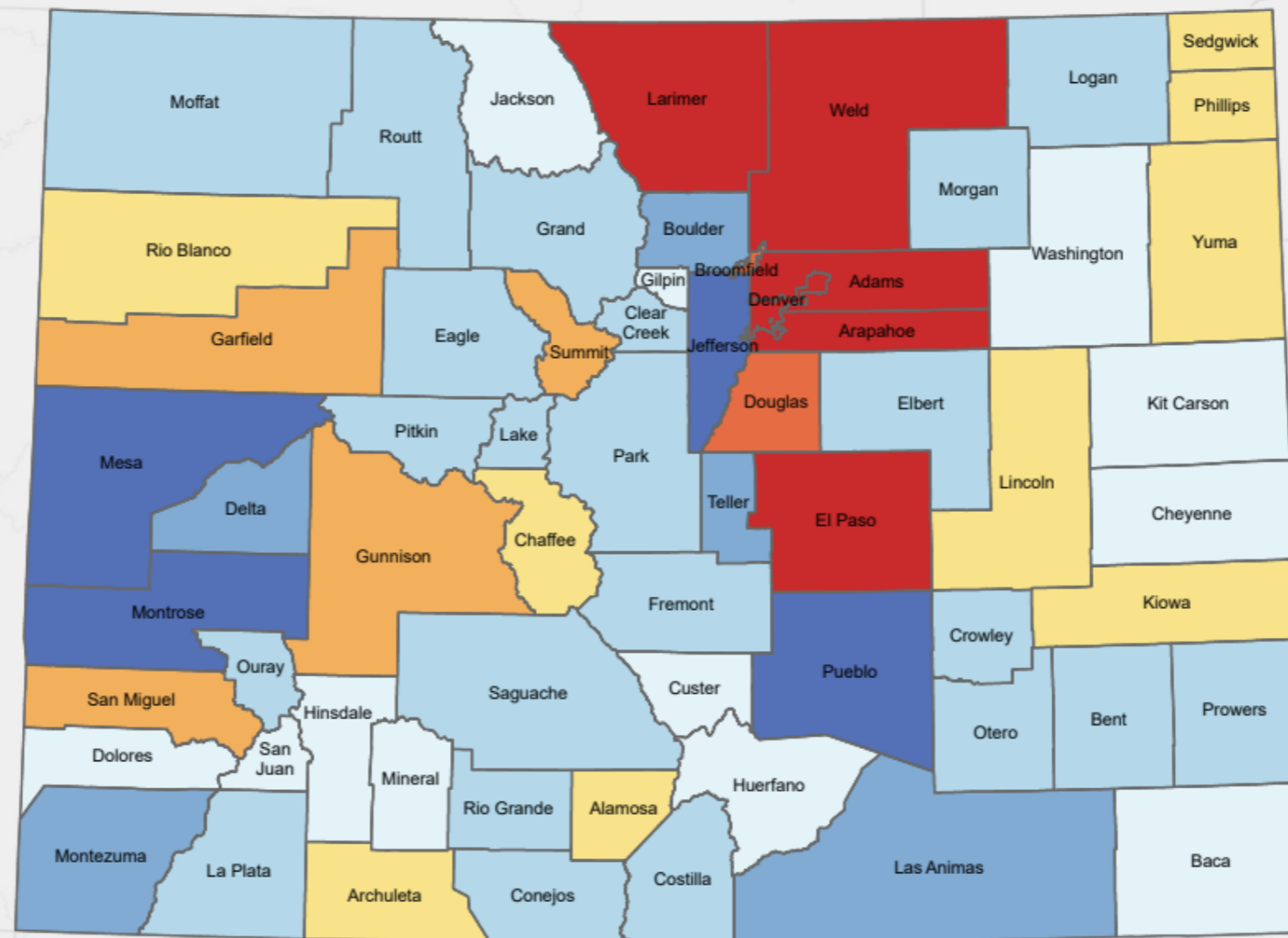
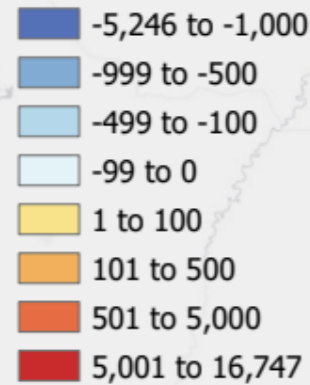


COLORADO
Department of Local Affairs

Source: U.S. Census Bureau, 2010 and 2020 Censuses

Under 18 Population Change by County 2010 to 2020

Population Change



Source: 2020 US Census

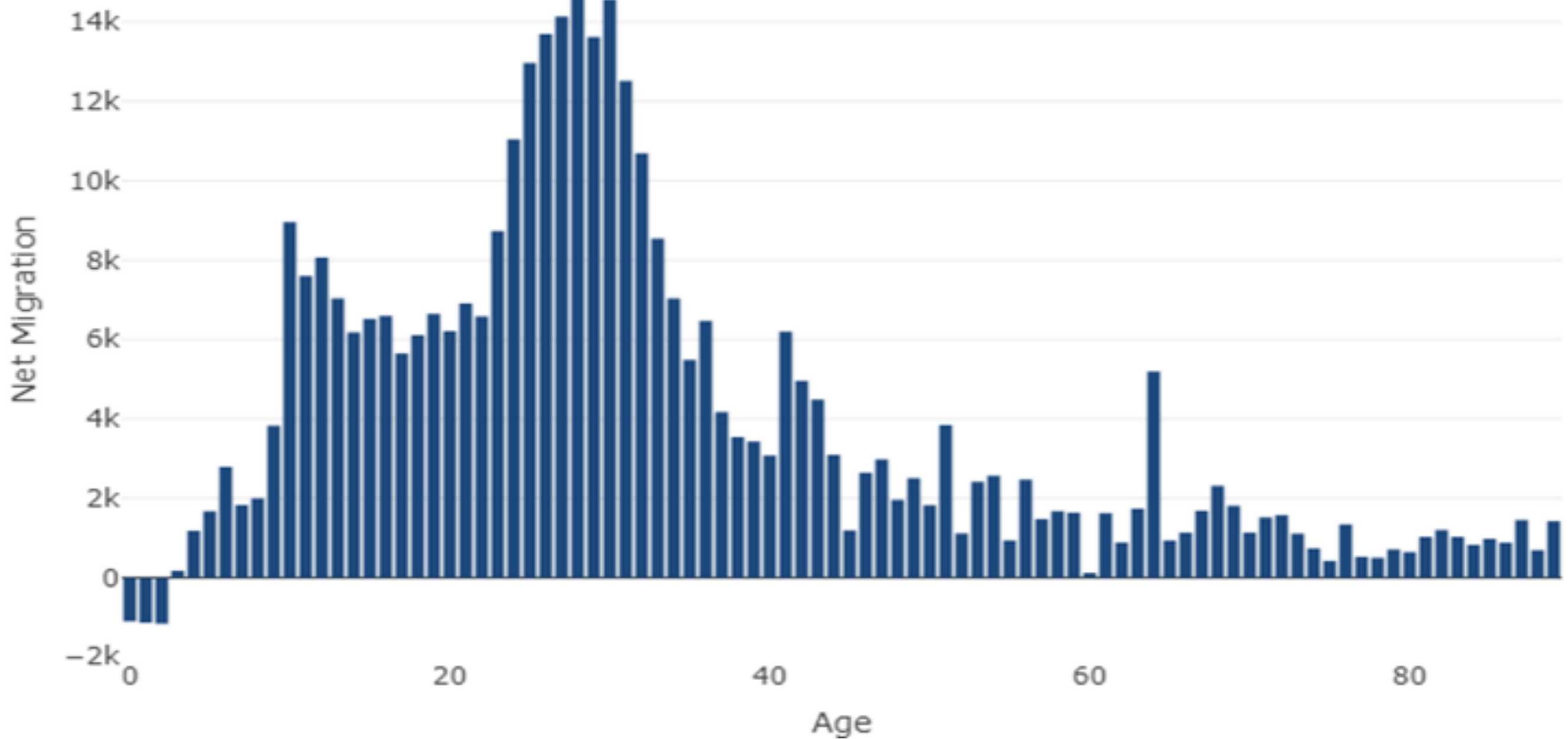
Esri, HERE, Garmin, USGS, EPA, NPS

- Population Under 18 increased by 38K over the decade.
- Only 5% of the total 744,518 growth was from the under 18

	2020		Change 2010-20		Percentage Change	
Arenaname	Total	Age 0 to 17	Total	Age 0 to 17	Total	Age 0 to 17
COLORADO STATE	5,773,714	1,264,138	744,518	38,529	14.8%	3.1%
MESA COUNTY	155,703	32,648	8,980	-1,869	6.1%	-5.4%
Collbran	369	67	-339	-126	-47.9%	-65.3%
De Beque	493	120	-11	-6	-2.2%	-4.8%
Fruita	13,395	3,444	749	-150	5.9%	-4.2%
Grand Junction	65,560	12,305	6,994	-122	11.9%	-1.0%
Palisade	2,565	461	-127	-140	-4.7%	-23.3%
Unincorp. Area	73,321	16,251	1,714	-1,325	2.4%	-7.5%

Colorado

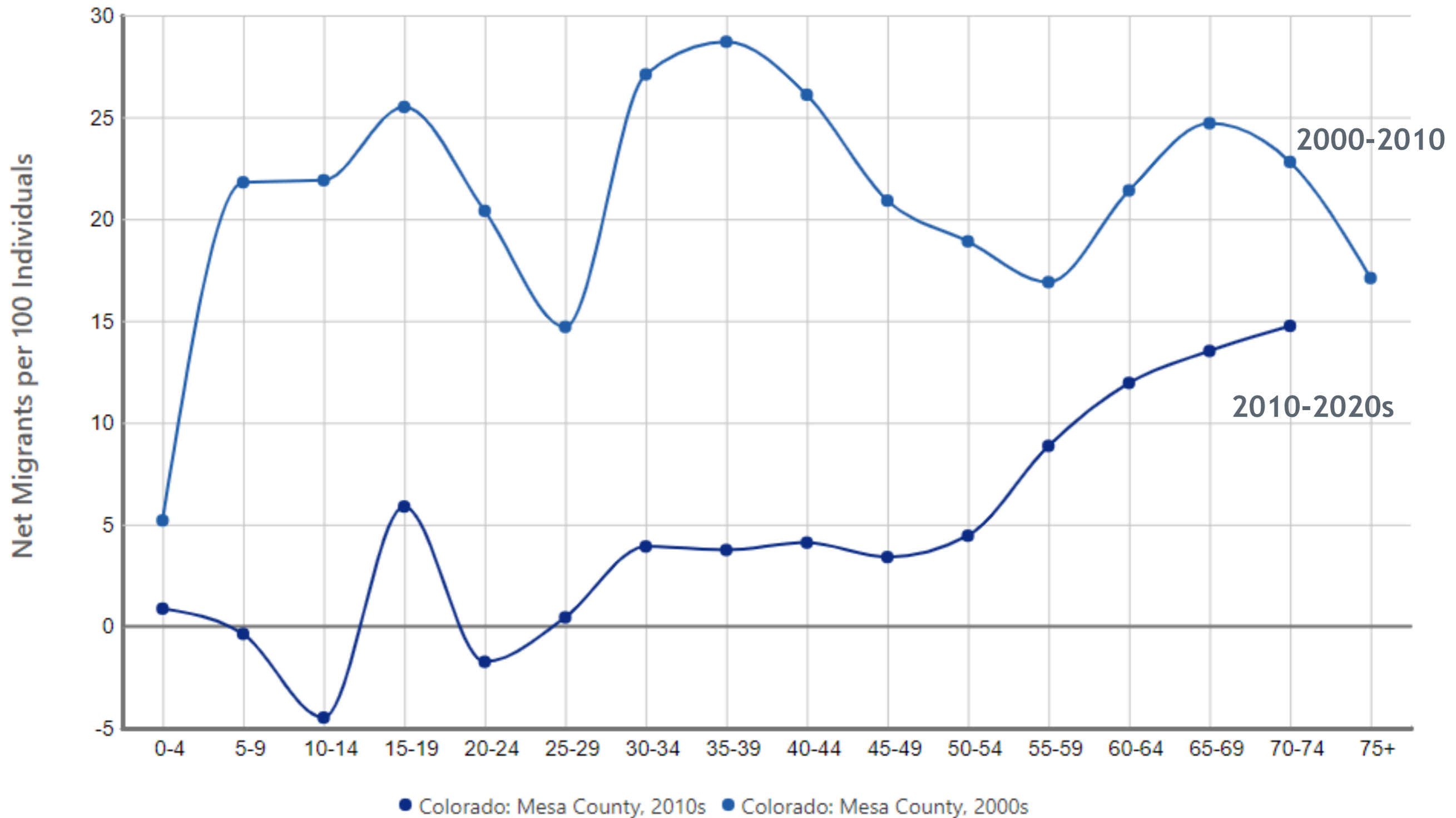
Net Migration by Age, 2000 to 2010



COLORADO

Department of Local Affairs

Net Migration by Age Mesa County

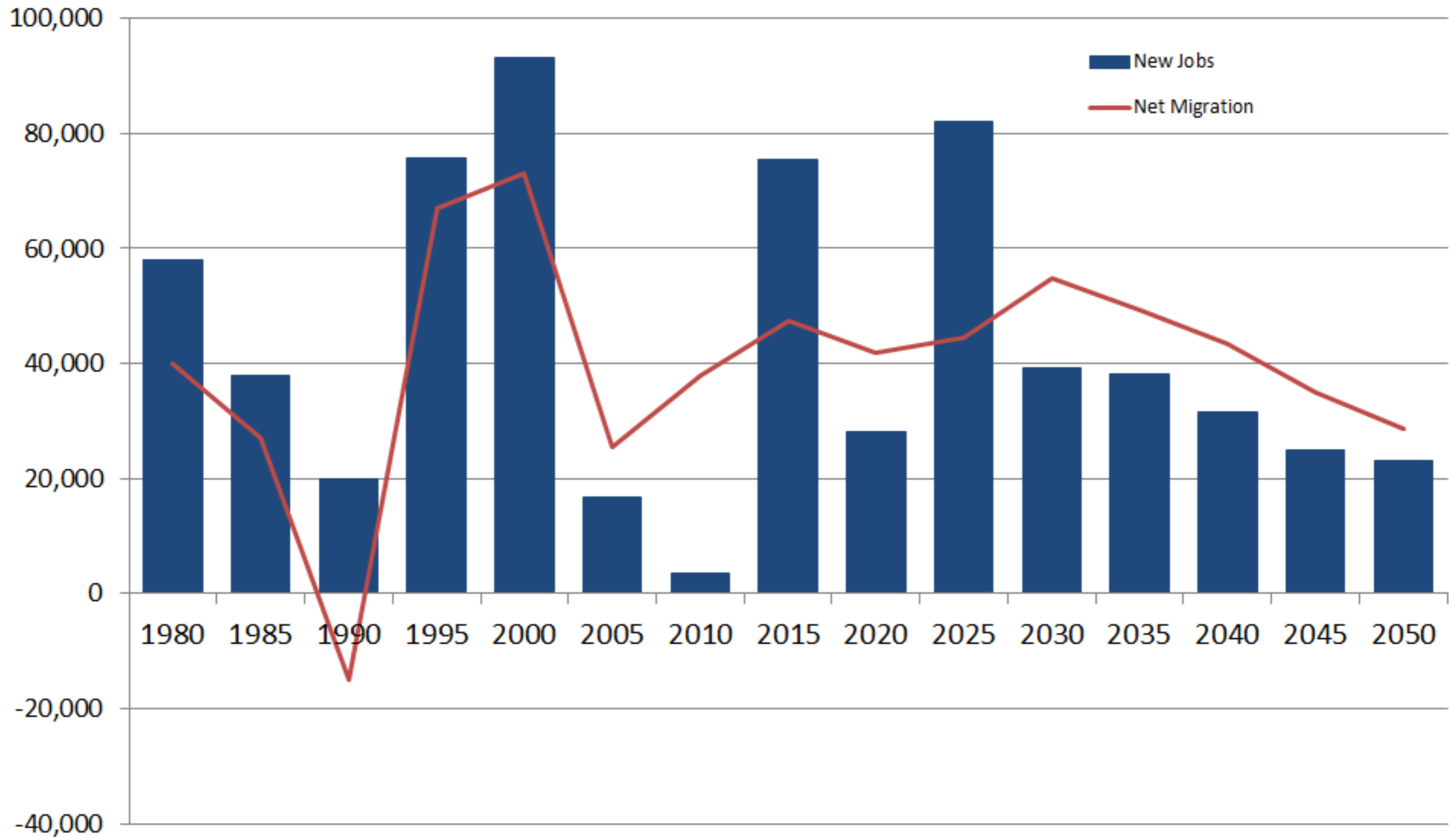


Egan-Robertson, David, Katherine J. Curtis, Richelle L. Winkler, Kenneth M. Johnson, and Caitlin Bourbeau, Age-Specific Net Migration Estimates for US Counties, 1950-2020. Applied Population Laboratory, University of Wisconsin - Madison, 2023 (Beta Release). Web.



COLORADO
Department of Local Affairs

Colorado New Jobs and Net Migration

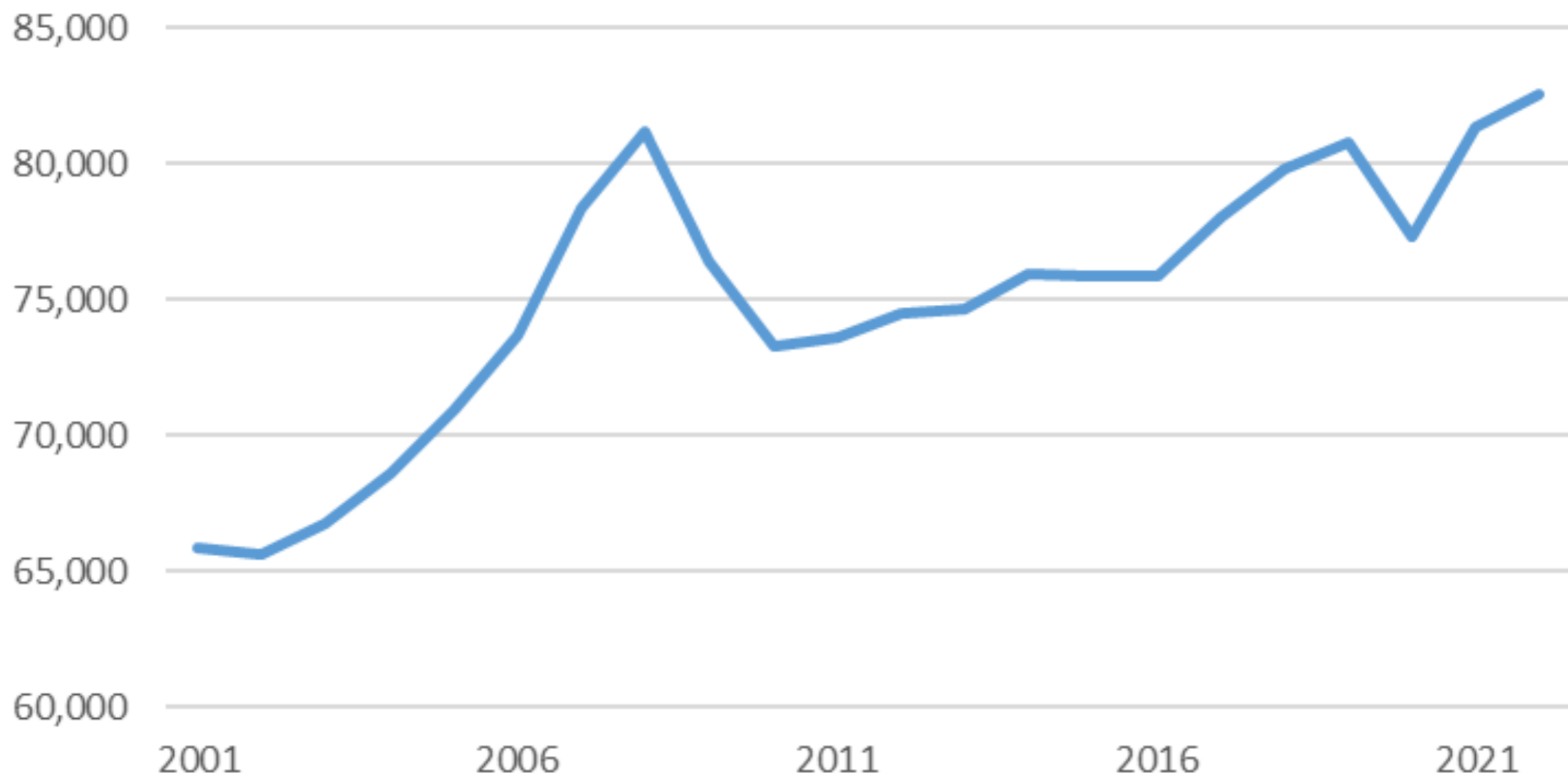


Jobs Are People



COLORADO
Department of Local Affairs

Mesa Total Estimated Employment

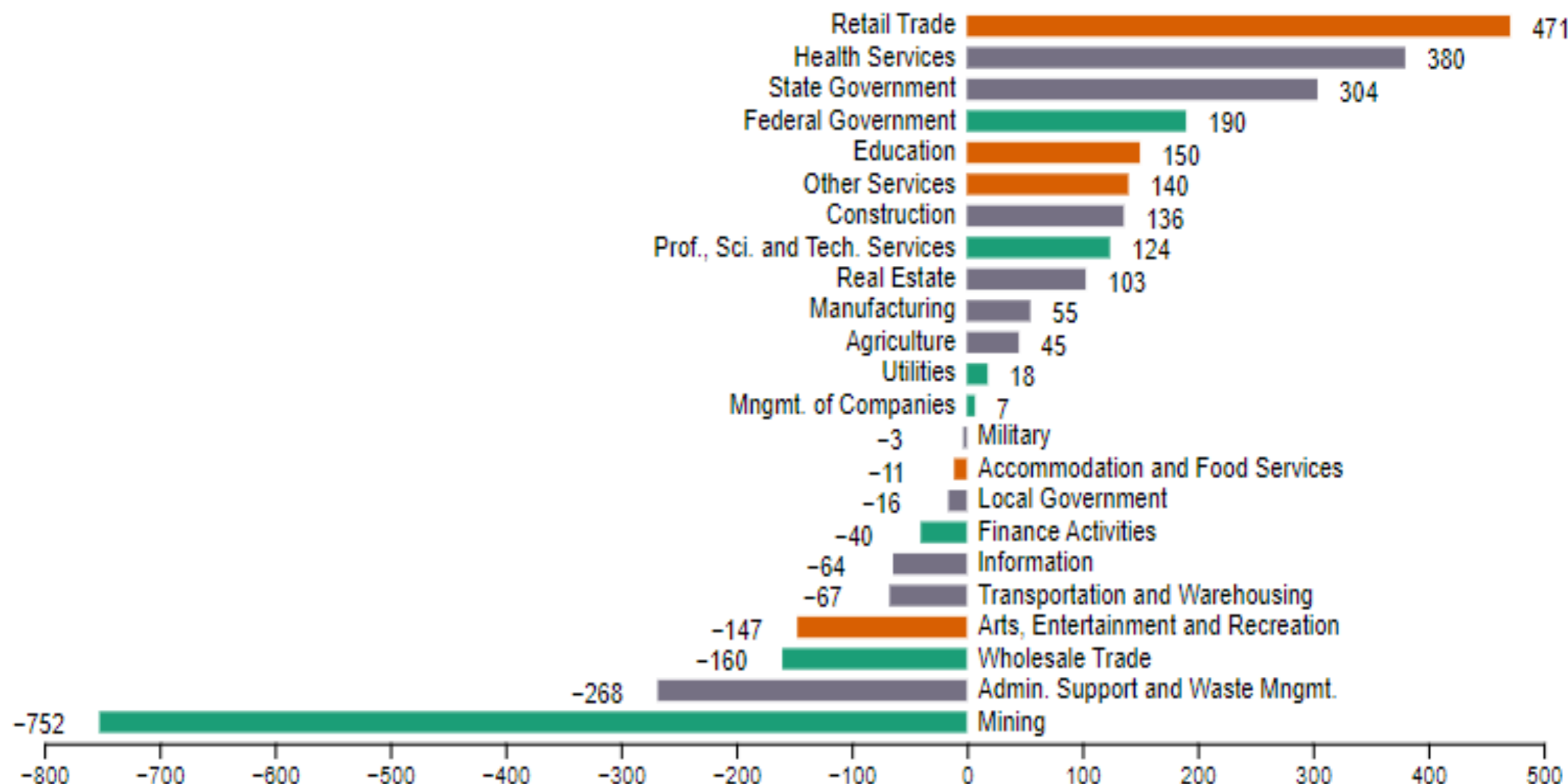


Colorado 127% recovered by end of 2022

- Still behind in some places
- Still behind in some industries



Employment Change by Sector. Mesa County 2019 to 2021



595 Total Employment Change

- Less than 80% of Average Weekly Wage
- Between 81% to 120% of Average Weekly Wage
- Greater than 120% of Average Weekly Wage

Job sector data is suppressed according to Bureau of Labor Statistics standards.

Data Source: Bureau of Labor Statistics Source Date: July, 2022.

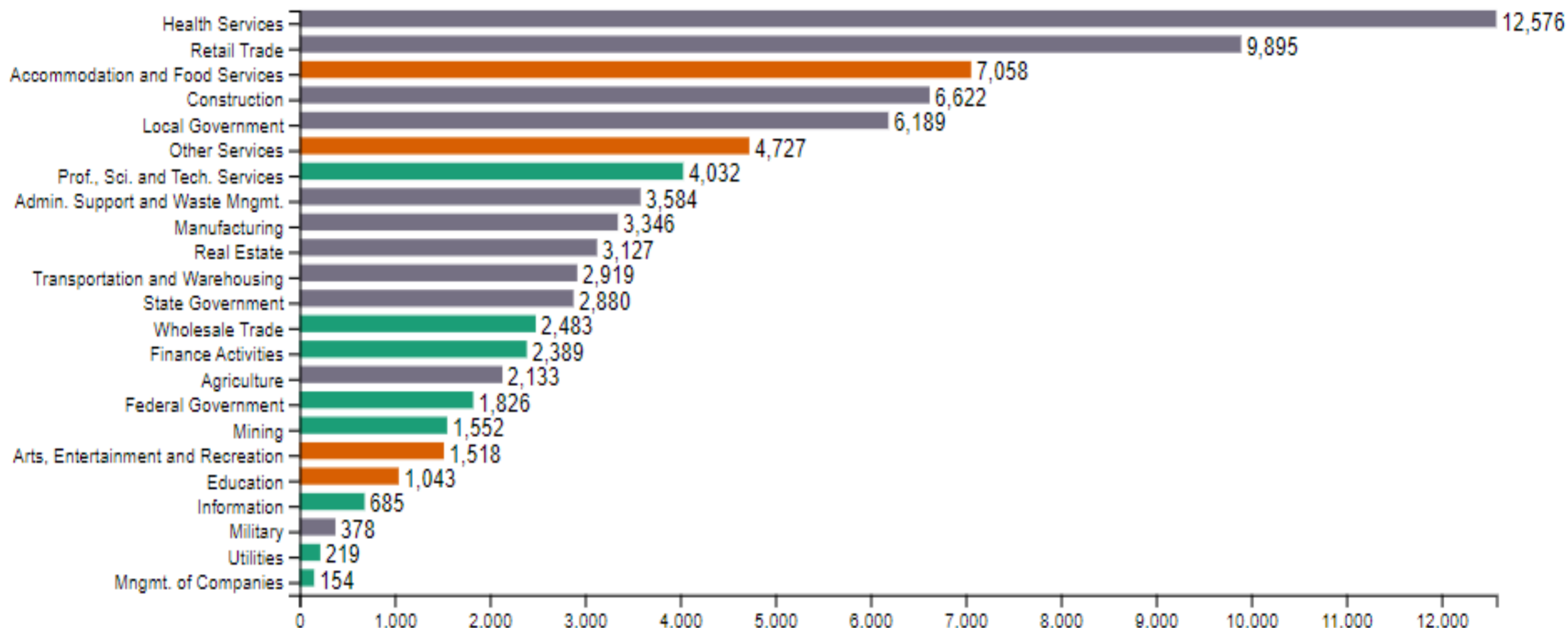
Visualization by the State Demography Office, Print Date: 05/08/2023



COLORADO

Department of Local Affairs

Jobs by Sector: Mesa County, 2021



Job sector data is suppressed according to Bureau of Labor Statistics standards.

Data Source: Bureau of Labor Statistics Source Date: July, 2022.

Visualization by the State Demography Office, Print Date: 05/08/2023

81,335 Total Estimated Jobs

\$49,705 Average Annual Wage

2021 Employment Share by Wage

Low Wage Jobs: (\$19,799 - \$36,702) 17.6%

Mid Wage Jobs: (\$39,931 - \$57,734) 68.9%

High Wage Jobs: (\$60,818 - \$92,188) 13.5%



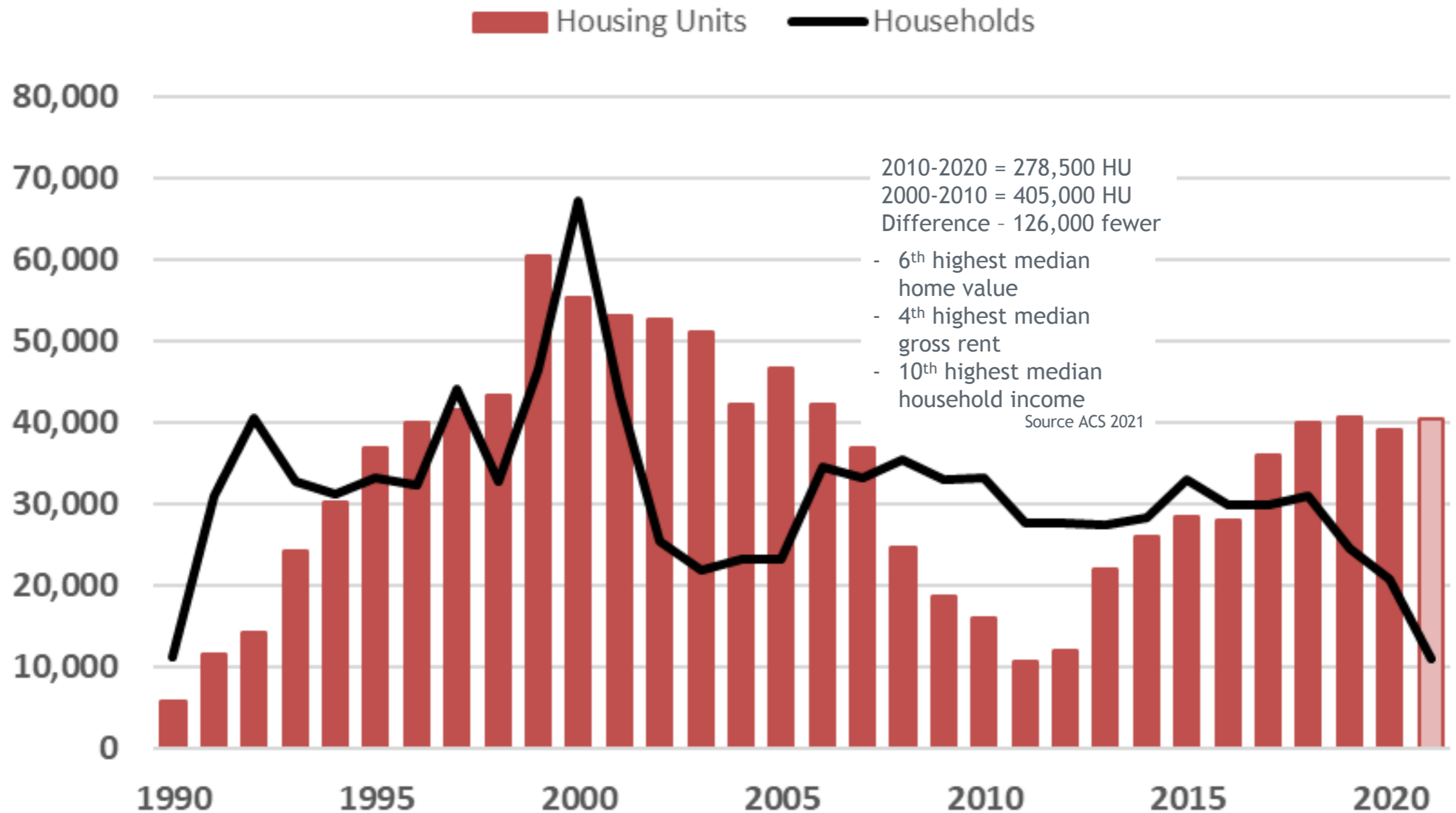
COLORADO

Department of Local Affairs

Housing

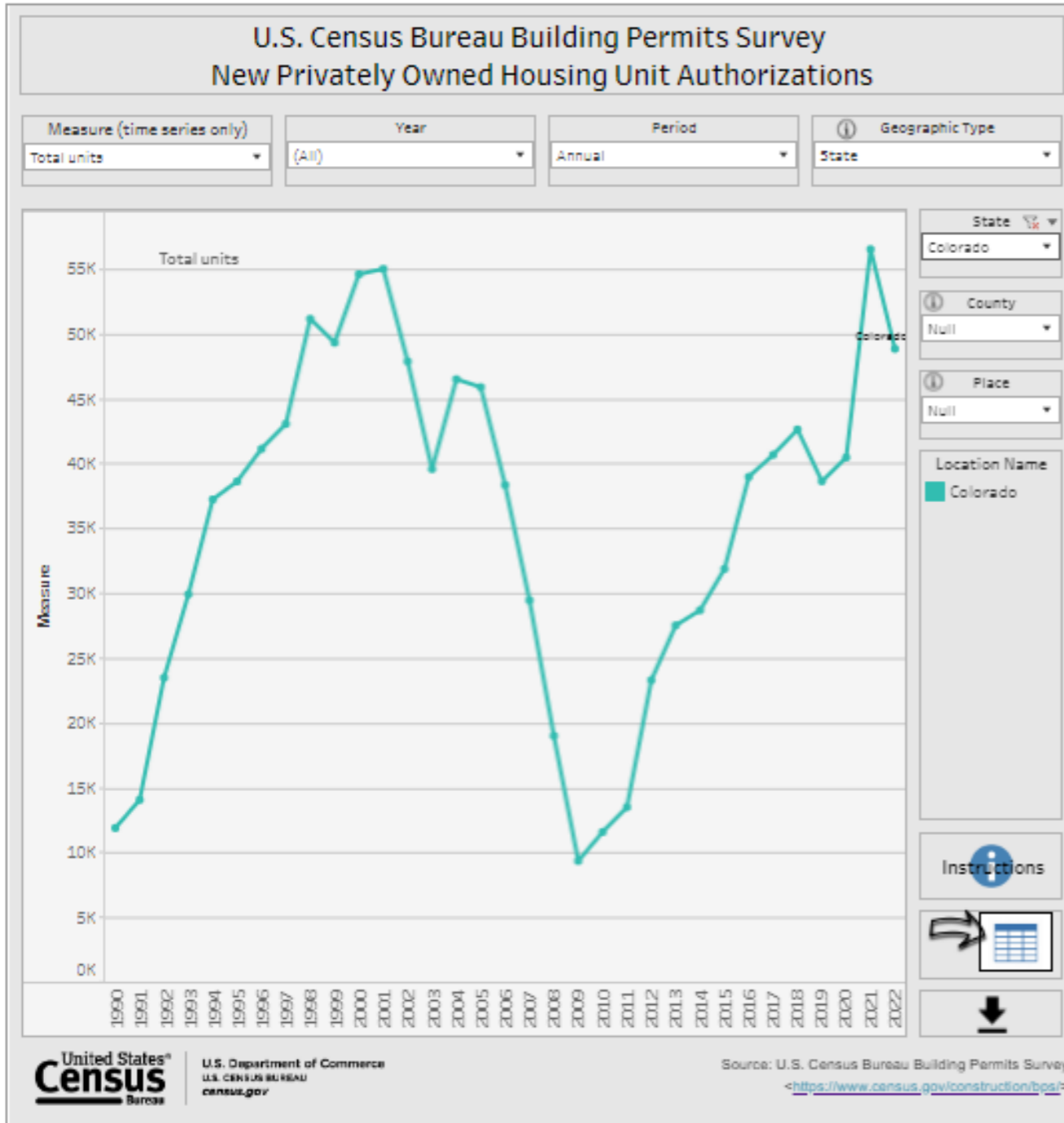


Colorado Annual Housing Units and Household Growth

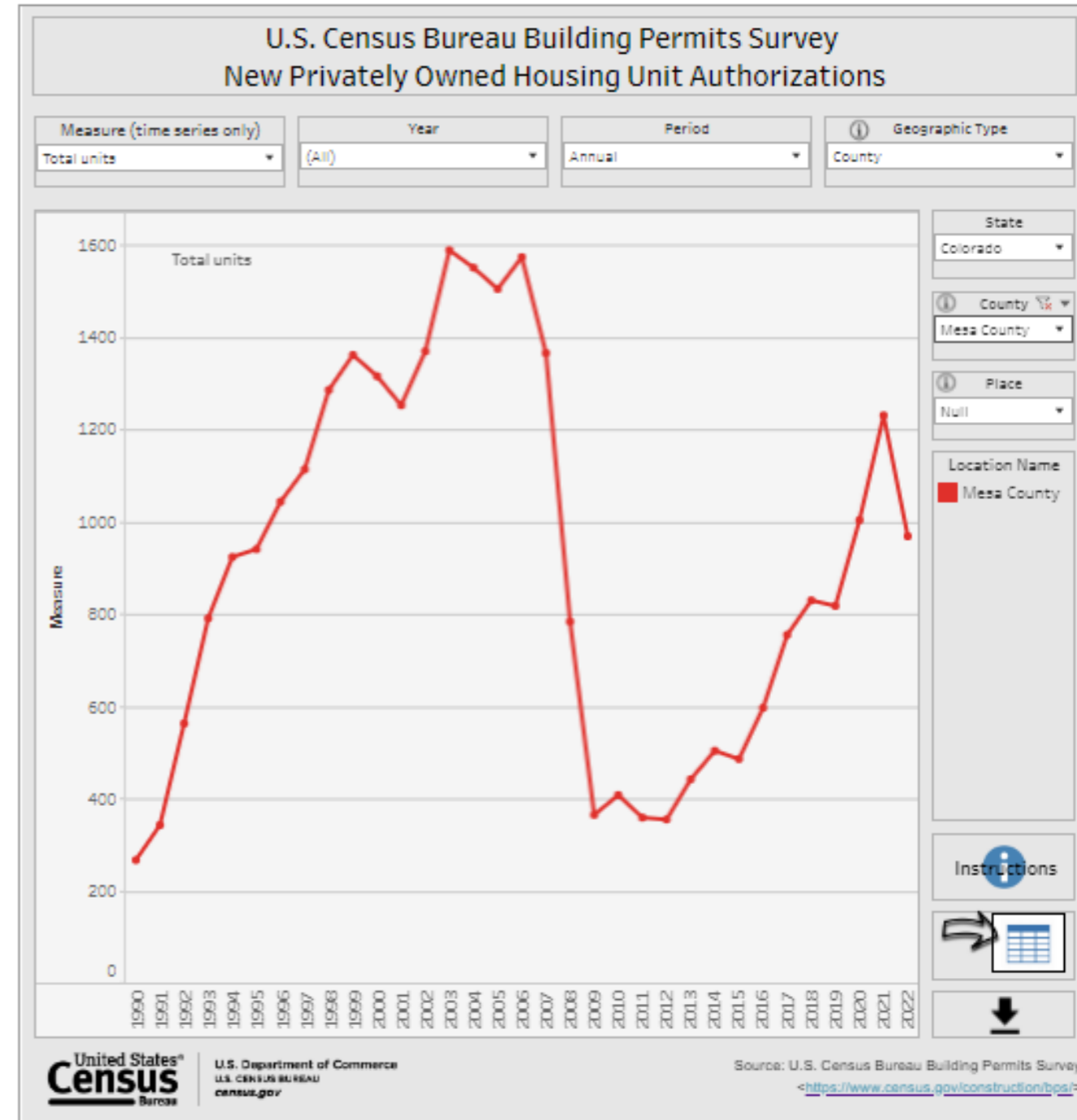


Building Permits

Colorado



Mesa



COLORADO
Department of Local Affairs

Colorado

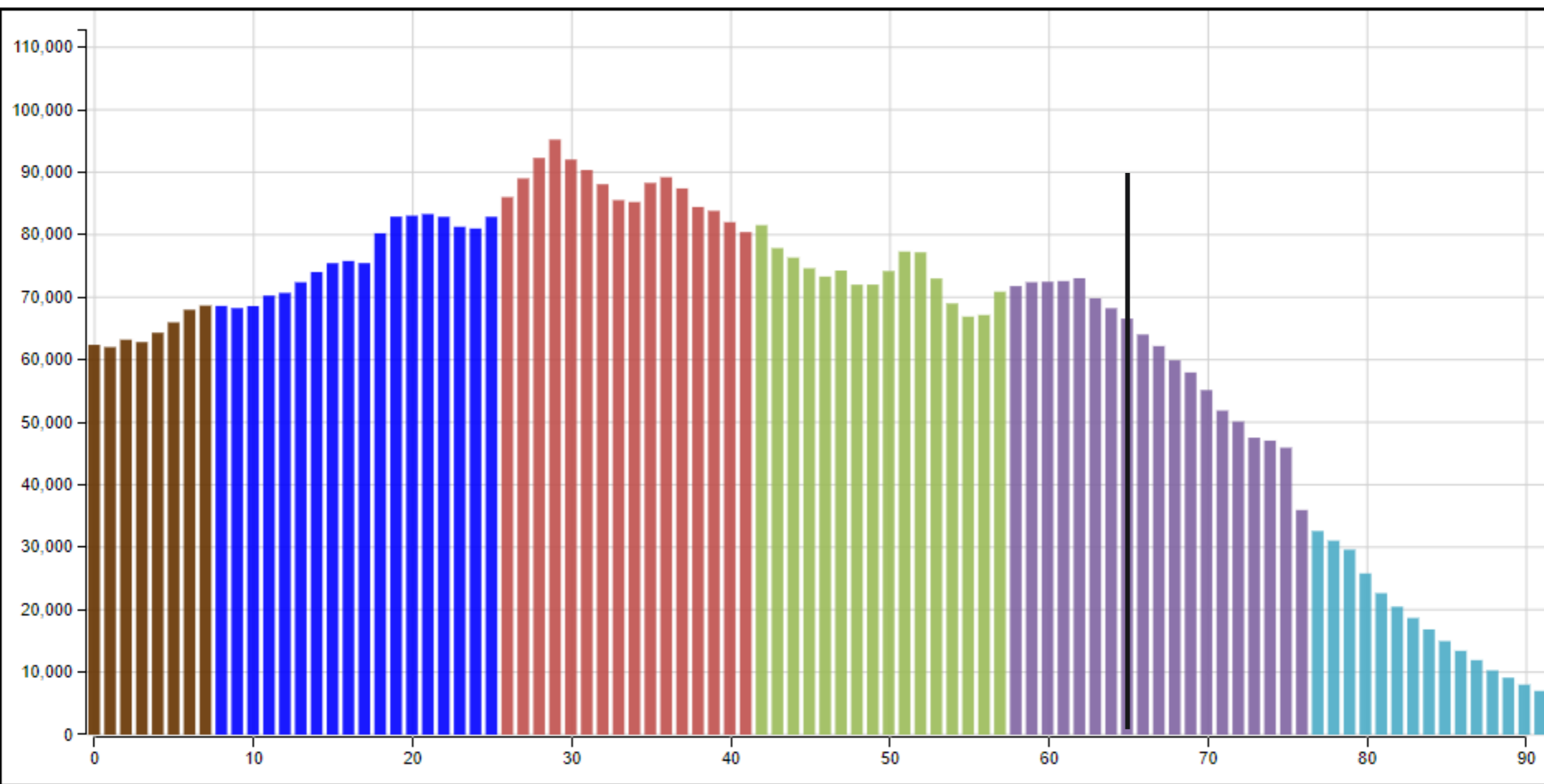
2022

Animate

Download Image

Colorado

2022



Generation X
(1965 - 1980)



Baby Boomers
(1946 - 1964)



Silent Generation
(1928 - 1945)



Greatest Generation
(- 1927)



Future Generations
(2030 -)



Generation Alpha
(2015 - 2029)



Generation Z
(1997 - 2014)



Millennials
(1981 - 1996)



COLORADO

Department of Local Affairs

Mesa

2023

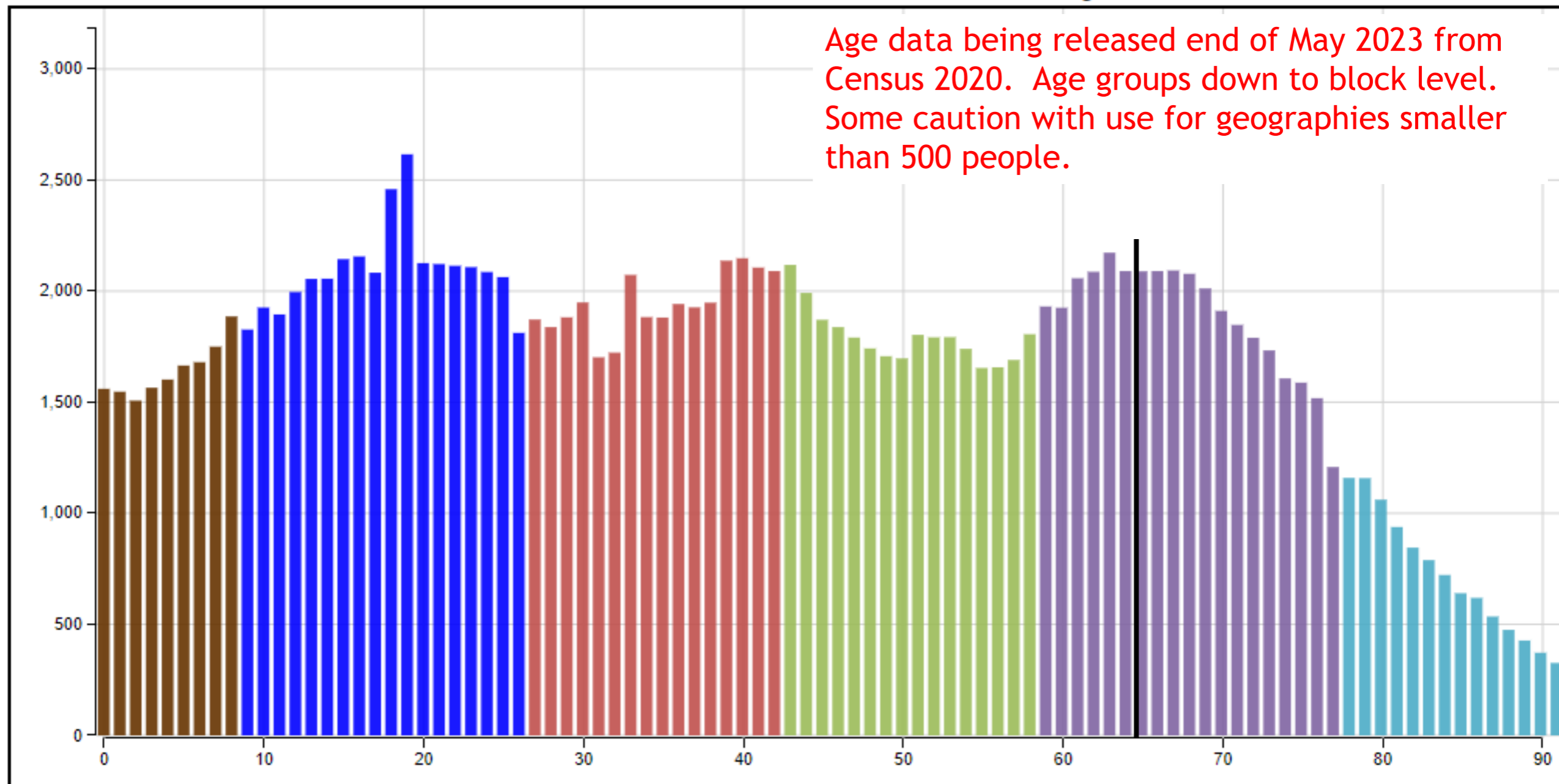
Animate

Download Image

Mesa County

2023

Age data being released end of May 2023 from Census 2020. Age groups down to block level. Some caution with use for geographies smaller than 500 people.



Generation X
(1965 - 1980)



Baby Boomers
(1946 - 1964)



Silent Generation
(1928 - 1945)



Greatest Generation
(- 1927)



Future Generations
(2030 -)



Generation Alpha
(2015 - 2029)



Generation Z
(1997 - 2014)



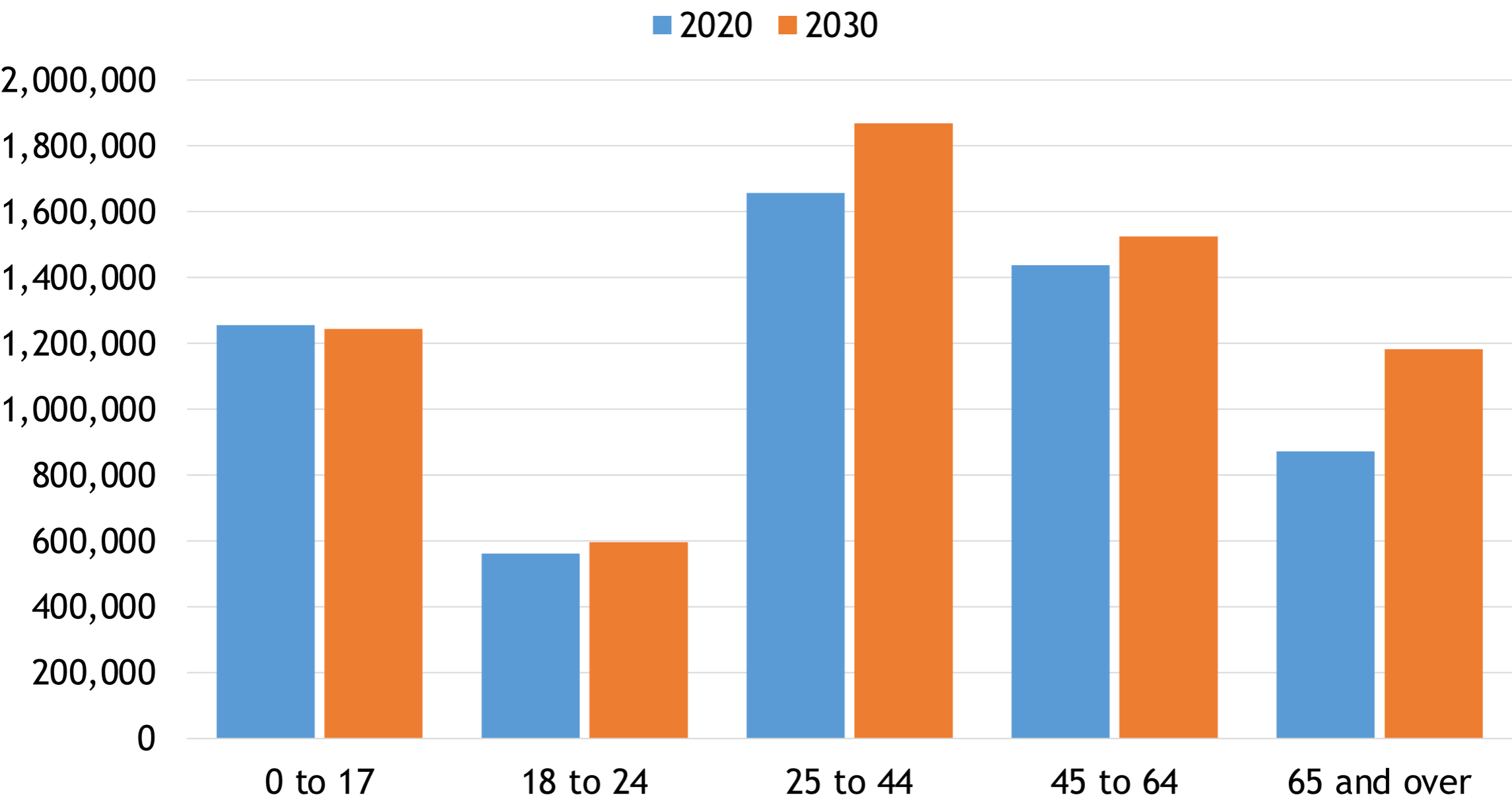
Millennials
(1981 - 1996)



COLORADO

Department of Local Affairs

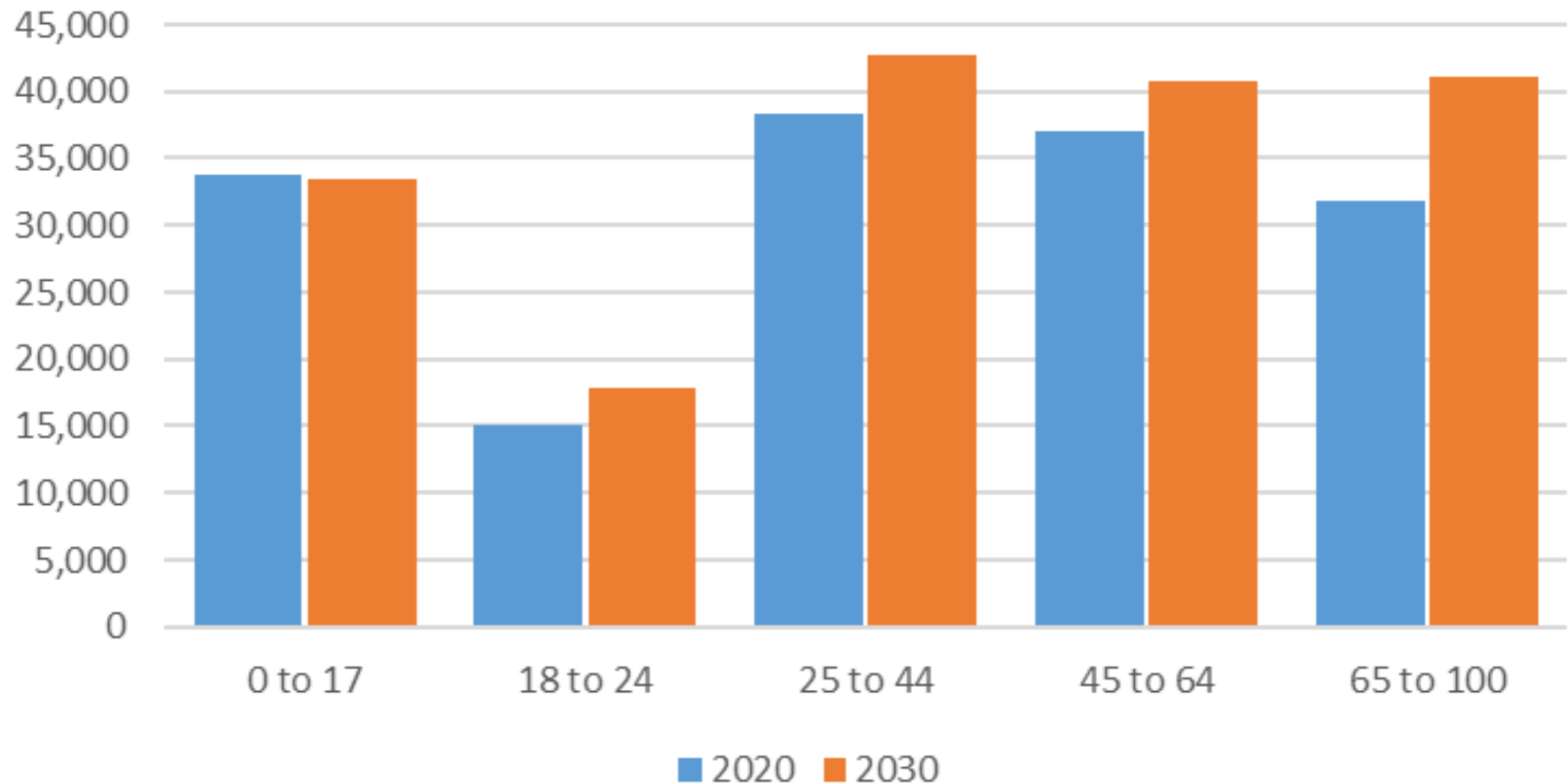
Forecast by Age Group - Colorado



2020-2030	0 to 17	18 to 24	25 to 44	45 to 64	65 and over	Total
Pop change	-11,565	35,538	211,026	86,842	310,235	632,076
% change	-0.9%	6.3%	12.7%	6.0%	35.6%	10.9%



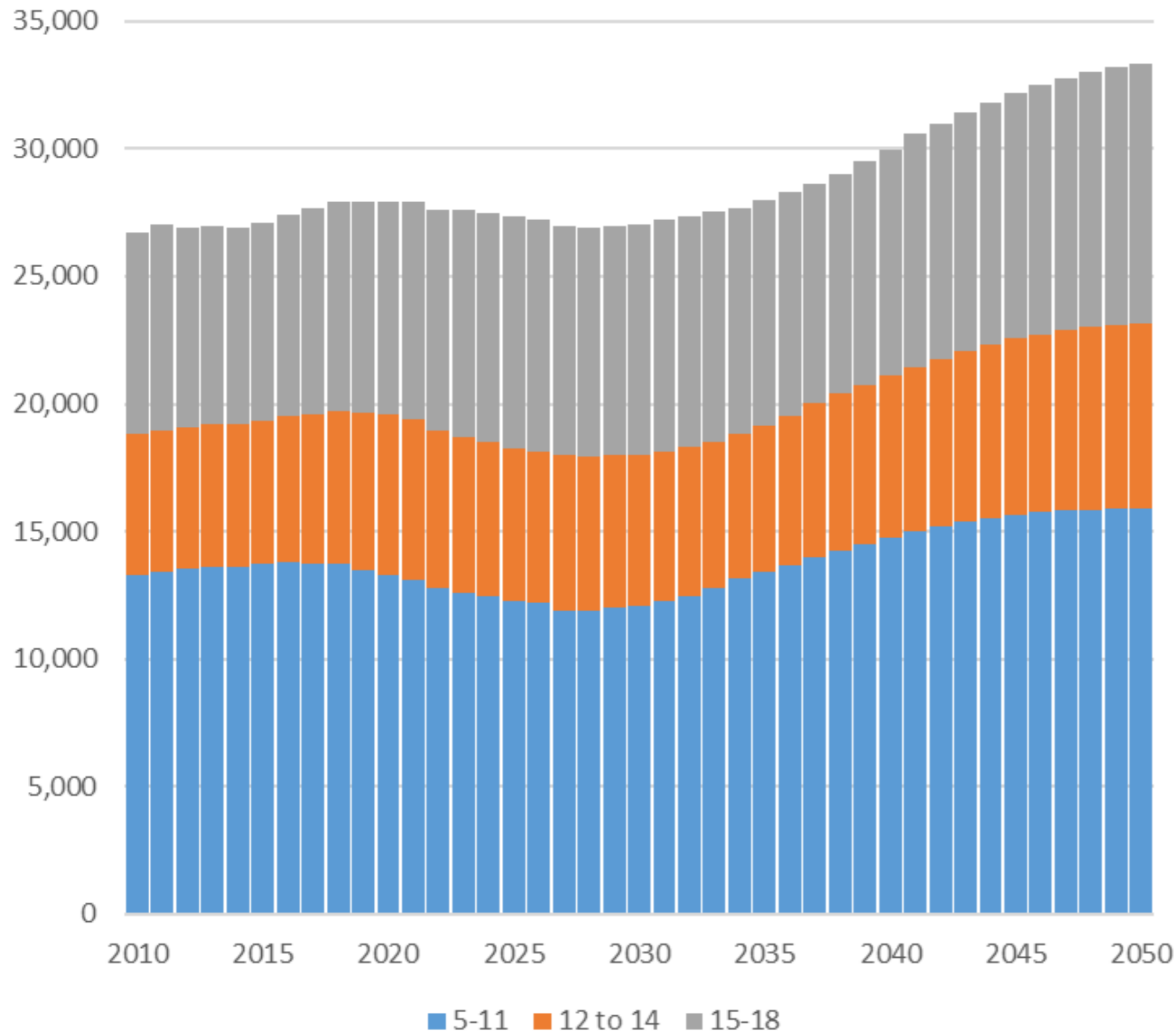
Mesa Forecast by Age Group



	0 to 17	18 to 24	25 to 44	45 to 64	65+	Total
2020	33,730	15,055	38,265	37,059	31,845	155,954
2030	33,442	17,918	42,720	40,838	41,116	176,034
Change	-288	2,863	4,455	3,779	9,271	20,080



School Age Population in Mesa



- Peak of 27,900 in 2020
- Return to 27,900 in 2035
- 5-11 peak 2016 return 2036
- 12-14 peak 2021 return 2039
- 15-18 peak 2025 return 2041



COLORADO

Department of Local Affairs

Population forecast methodology

Economic forecast

Jobs

- 2nd & 3rd job

- Commuters

Labor Demand

Cohort-component

+Births - Deaths

+ Net Migration

X LFPR

Labor Supply

=

Differences resolved by net migration



Forecast Factors - Population

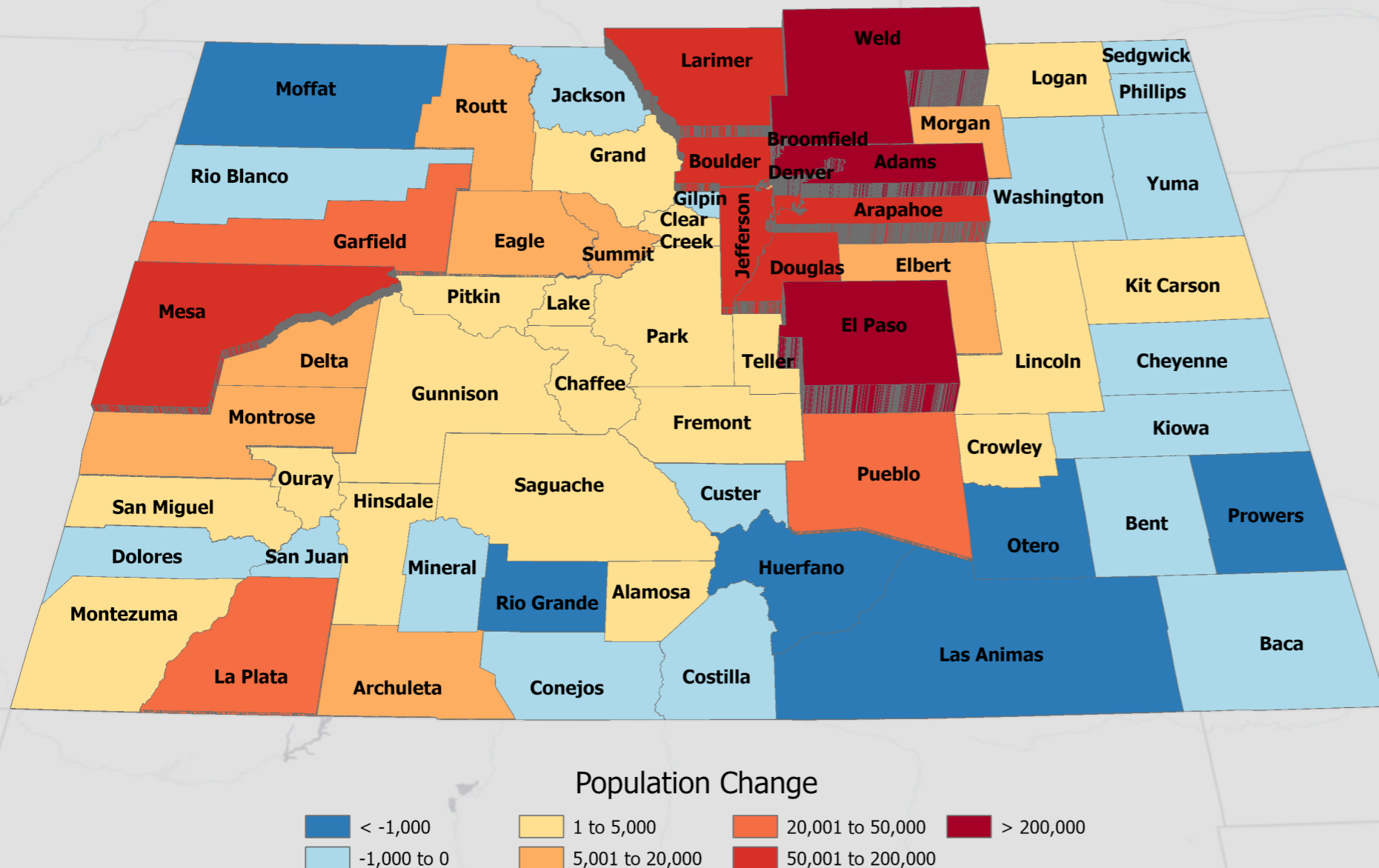
- Population growth is slowing - but still growing
 - Births have slowed
 - Migration/Mobility slowing,
 - Harder to attract and retain people
- Fastest growth in the 65+
 - Retirements - will need new workers
 - Drive parts of the economy
 - Move less and smaller household size
- Job growth drives migration
 - New jobs and retirements
 - Housing, community services, schools



Colorado Long-Term Forecast

7.5 million in 2050

Projected Population Change 2020 - 2050



Source: Colorado State Demography Office

October 2021

Change 2020-2050

State: 1.8 million

Front Range: 1.6M

Western Slope: 190K

Central Mtns: 1K

San Luis Valley: -2K

Eastern Plains: 7K

Mesa

	Pop Forecast
2020	155,950
2030	176,032
2040	202,388
2050	221,563



COLORADO
Department of Local Affairs

State Demography Office, 2021

Uncertainties to the Forecast +/-

- Water
- Intl' immigration
- Housing - supply, price, type, location
- Industry changes - boom/bust, recession, competitiveness
- Infrastructure/Transportation
- Aging - labor force, prepared labor force
- Natural disasters - nationally
- State Budget





Thank you

State Demography Office

Department of Local Affairs

Elizabeth Garner

elizabeth.garner@state.co.us

303-864-7750

Demography.dola.colorado.gov



COLORADO

Department of Local Affairs