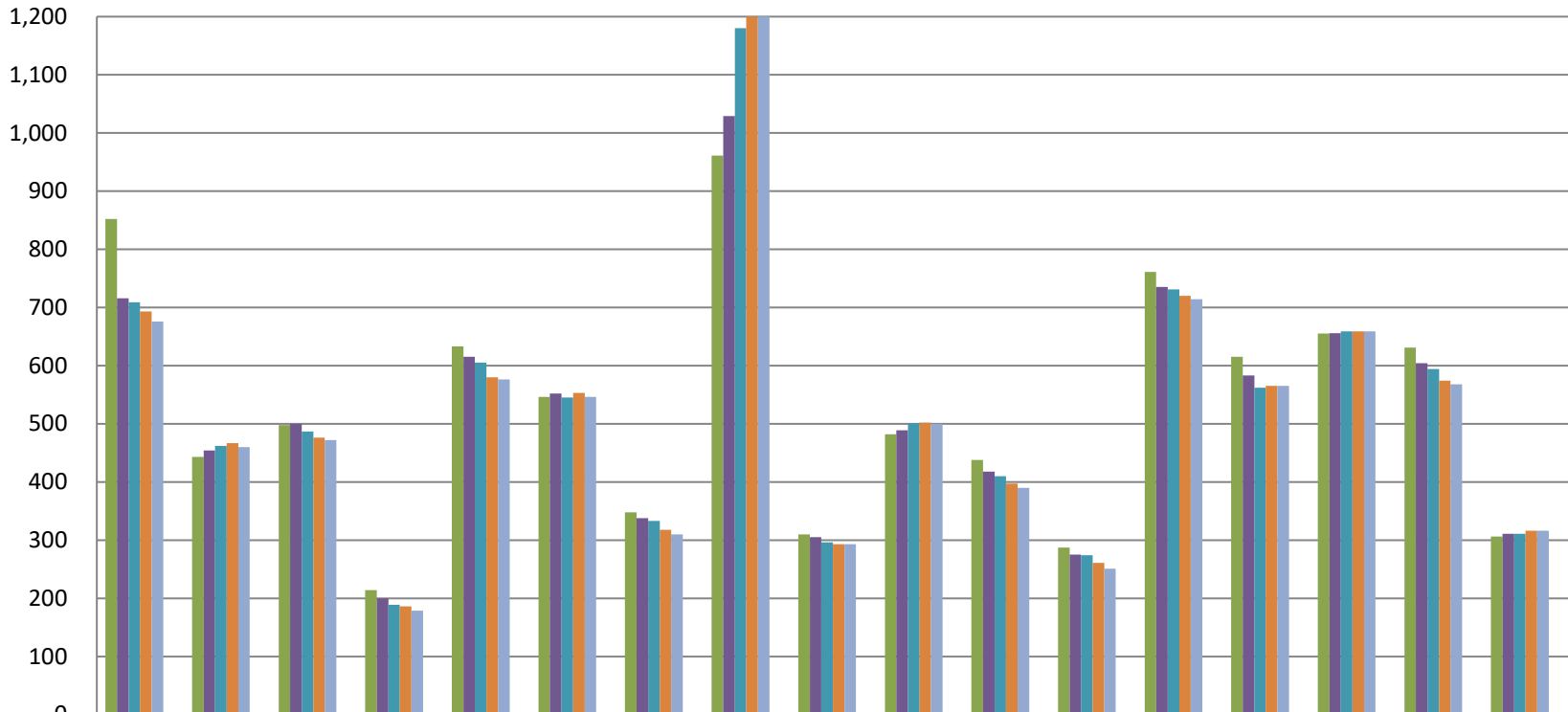


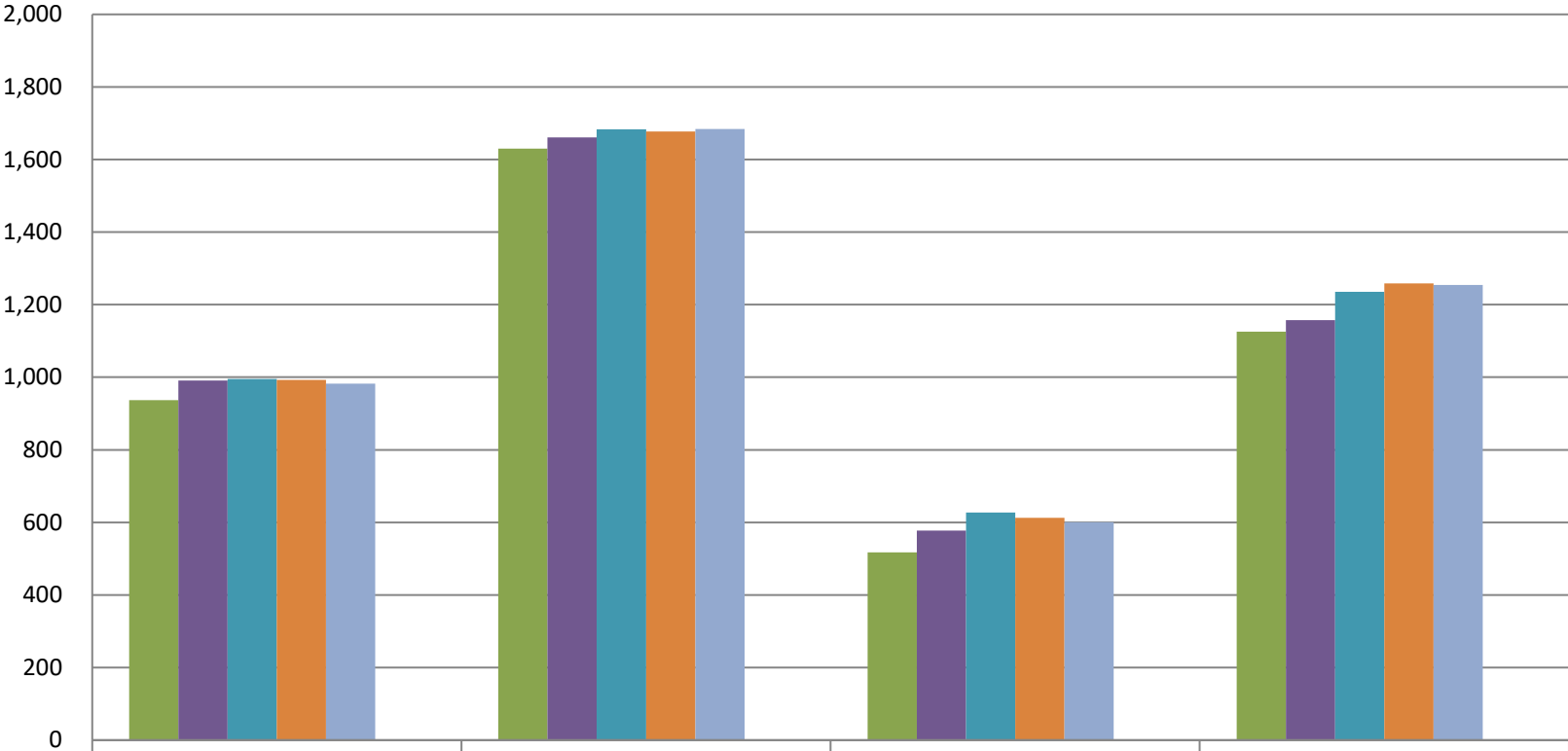
## Osseo Area Schools Elementary Enrollment Projection



	BW	BG	CI	CV	EB	EC	FO	FB	GC	OAK	PL	PB	RC	RL	WVR	WD	ZW
FY 2025	852	443	498	214	633	546	348	961	310	482	438	287	761	615	655	631	306
FY 2026	716	454	500	200	615	552	338	1,029	305	489	418	275	735	583	656	604	311
FY 2027	709	462	487	189	605	545	333	1,180	296	501	410	274	731	562	659	594	311
FY 2028	693	467	476	186	580	553	318	1,259	293	502	397	261	720	565	659	574	316
FY 2029	676	460	472	179	576	546	310	1,306	293	500	390	251	714	565	659	568	316
5 yr. growth	-20.66%	3.84%	-5.22%	-16.36%	-9.00%	0.00%	-10.92%	35.90%	-5.48%	3.73%	-10.96%	-12.54%	-6.18%	-8.13%	0.61%	-9.98%	3.27%

■ FY 2025   
 ■ FY 2026   
 ■ FY 2027   
 ■ FY 2028   
 ■ FY 2029   
 ■ 5 yr. growth

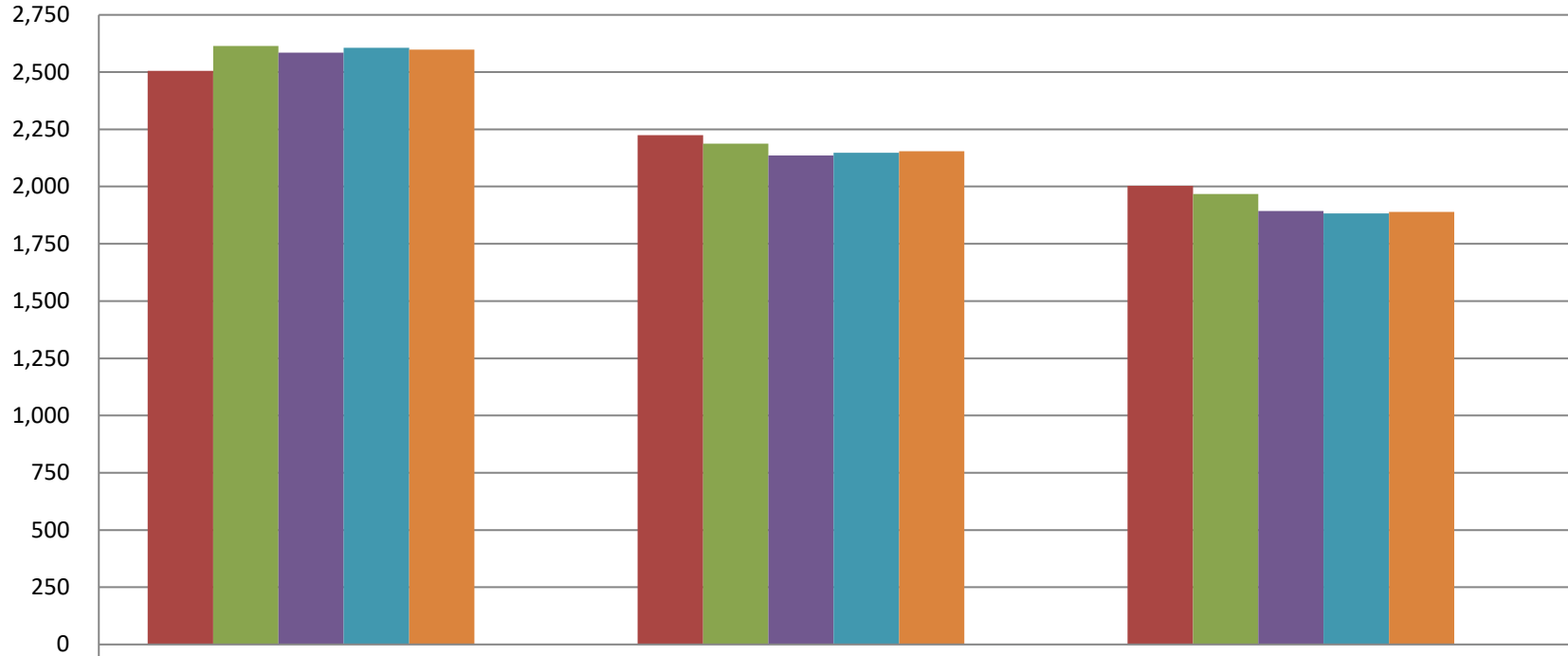
## Osseo Area Schools Middle School Enrollment Projection



	BMS	MGMS	NVMS	OMS
FY 2025	937	1,630	517	1,126
FY 2026	991	1,661	578	1,157
FY 2027	995	1,683	627	1,235
FY 2028	993	1,677	612	1,258
FY 2029	982	1,684	601	1,254
5 yr. growth	4.80%	3.31%	16.25%	11.37%

■ FY 2025  
 ■ FY 2026  
 ■ FY 2027  
 ■ FY 2028  
 ■ FY 2029  
 ■ 5 yr. growth

## Osseo Area Schools Senior High Enrollment Projection



(250)

	MGSH	OSH	PCSH
FY 2025	2,506	2,224	2,003
FY 2026	2,614	2,187	1,968
FY 2027	2,585	2,136	1,893
FY 2028	2,606	2,148	1,883
FY 2029	2,598	2,154	1,890
5 yr. growth	3.67%	-3.15%	-5.64%

■ FY 2025  
 ■ FY 2026  
 ■ FY 2027  
 ■ FY 2028  
 ■ FY 2029  
 ■ 5 yr. growth