



# College for All Update 2023-2024

# Benefits of Early College



## **Reduces barriers to college access**

Seamless transition  
from high school to  
college through  
partnerships with  
Dallas College

Classes at the College  
Senior Year



## **Allows students to earn 60 college credits at no cost**

### of college credit hours  
earned in 22-23 school  
year

# of Associates Degrees

Tuition savings of \$\$\$



## **Provides academic and social support**

Provides academic and  
social support services  
through dedicated staff

Develops critical soft  
skills needed for  
college and career  
success

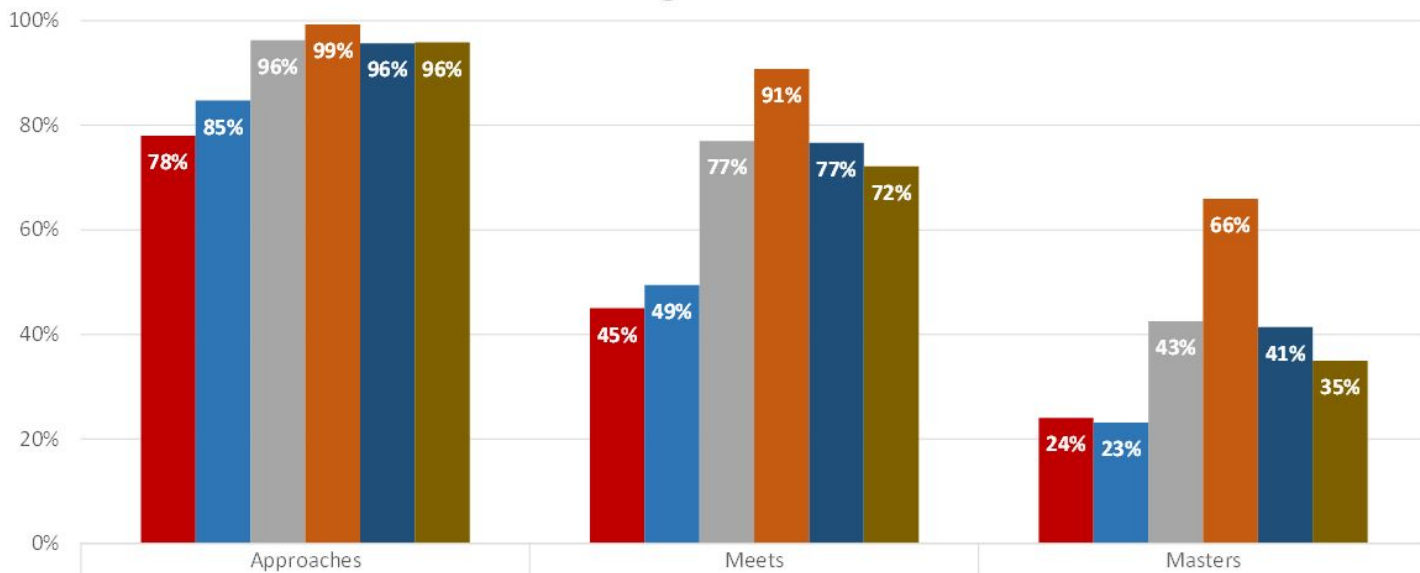
# 23-24 Students Enrolled

**#P-TECH Students**  
**# ECHS Students**  
**# Collegiate Academy Students**  
**# Total**

**% At Risk**

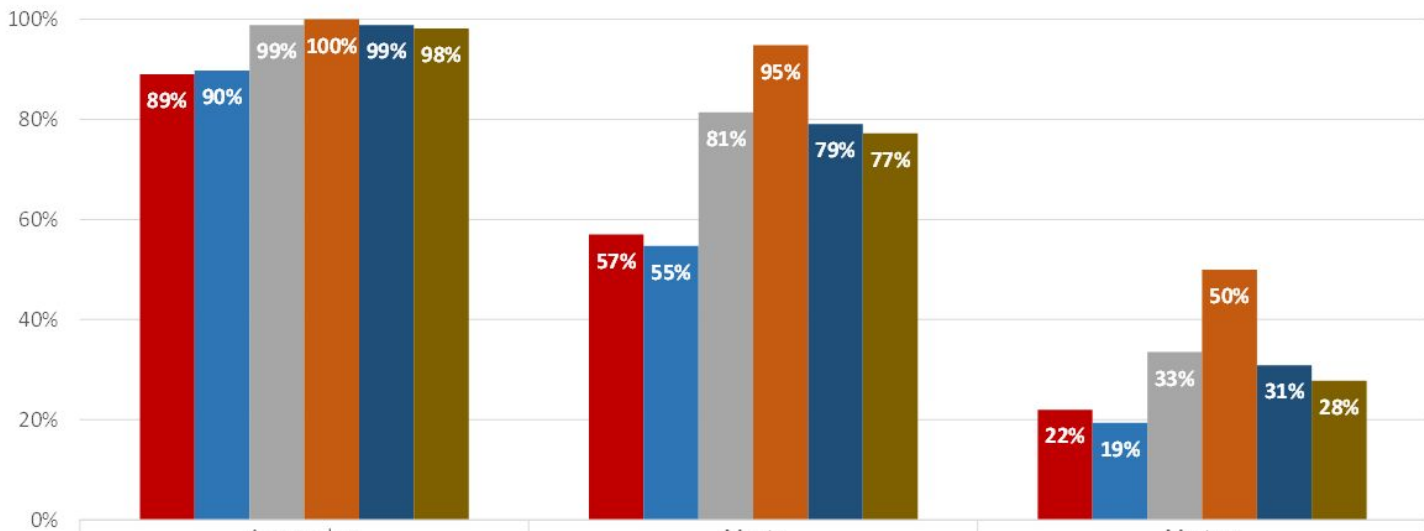
**% Economically  
Disadvantaged**

## Algebra I



State*	78%	45%	24%
GISD (non-College for All)	85%	49%	23%
All Programs	96%	77%	43%
Collegiate Academy	99%	91%	66%
ECHS	96%	77%	41%
P-Tech	96%	72%	35%

## Biology



■ State\*

■ GISD (non-College for All)

■ All Programs

■ Collegiate Academy

■ ECHS

■ P-Tech

Approaches

Meets

Masters

89%

90%

99%

100%

99%

98%

57%

55%

81%

95%

79%

77%

22%

19%

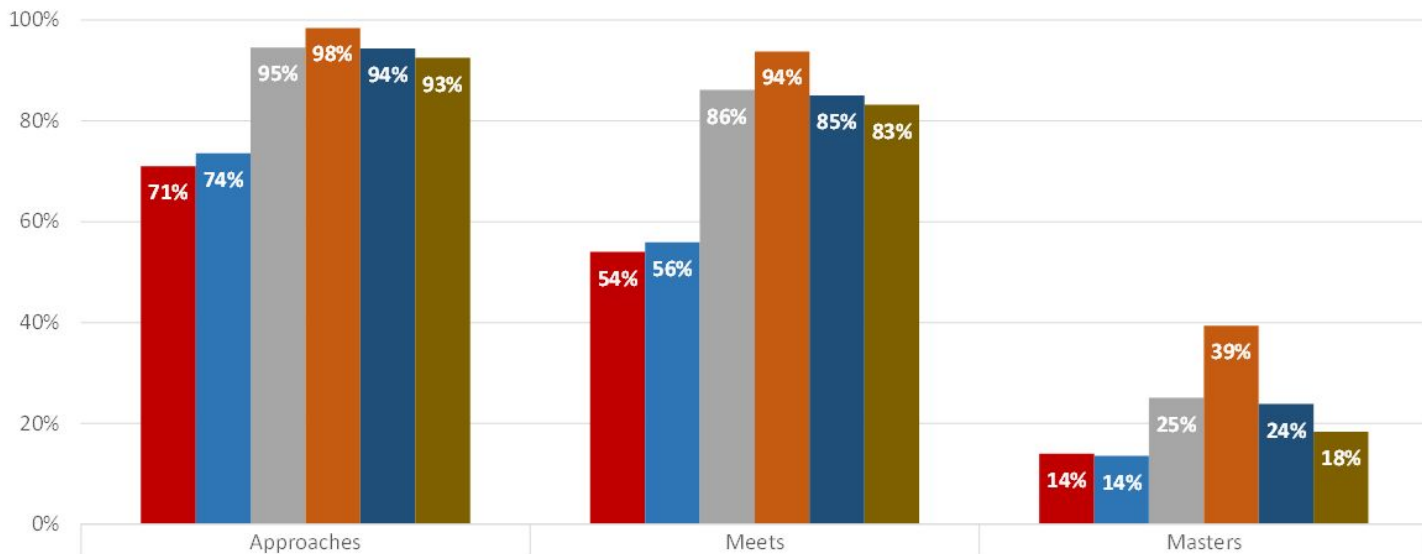
33%

50%

31%

28%

## English I



■ State*
■ GISD (non-College for All)
■ All Programs
■ Collegiate Academy
■ ECHS
■ P-Tech

Approaches

71%

74%

95%

98%

94%

93%

Meets

54%

56%

86%

94%

85%

83%

Masters

14%

14%

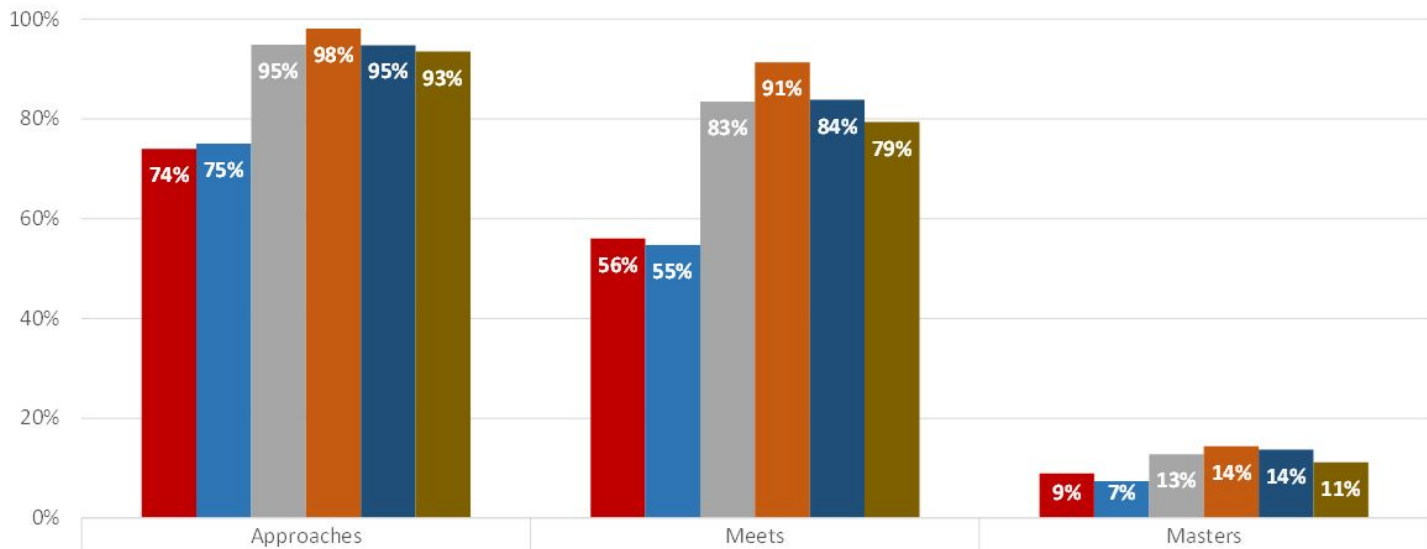
25%

39%

24%

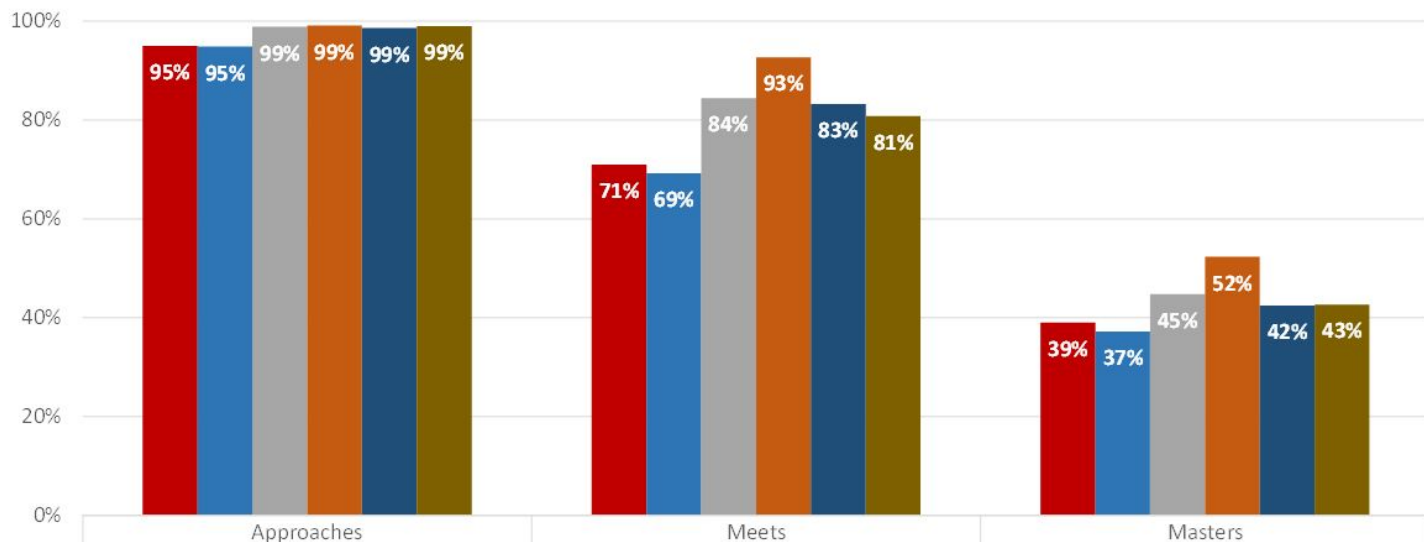
18%

## English II



State*	74%	56%	9%
GISD (non-College for All)	75%	55%	7%
All Programs	95%	83%	13%
Collegiate Academy	98%	91%	14%
ECHS	95%	84%	14%
P-Tech	93%	79%	11%

## US History



■ State*	95%	71%	39%
■ GISD (non-College for All)	95%	69%	37%
■ All Programs	99%	84%	45%
■ Collegiate Academy	99%	93%	52%
■ ECHS	99%	83%	42%
■ P-Tech	99%	81%	43%

# # Seniors at the College in 23-24

## Richland- #

Garland  
ECHS

Naaman  
Collegiate

N Garland  
ECHS &  
P-TECH

Rowlett  
ECHS &  
P-TECH

Sachse  
ECHS &  
P-TECH

## Eastfield -#

Lakeview  
P-TECH

S Garland  
ECHS &  
P-TECH

## North Lake @ Construction Services Center- #

Naaman P-TECH  
Construction



**Hear from our  
Senior students  
-need video or  
student testimonial**

# Dual Credit Program Progress



## Course Offering Expansion

New course offerings for early college and comprehensive dual credit students.

Over 230 college courses offered in GISD.



## Graduate Coursework Program

Prioritizing funding for dual credit credentialing for nominated GISD teachers

GISD is the gold standard with 103 dual credit credentialed teachers in GISD...and growing!



## Student Performance

83% of students earning a grade of C or better

# Dual Credit by the Numbers

Students Enrolled	College Credits Earned	College Degrees & Certificates	Tuition Savings for Families	Textbook Savings for Families
2020-21: 3,580	2020-21: 30,573	2020-21: 130	2020-21: \$2,054,852	2020-21: \$696,560
2021-22: 3,993	2021-22: 38,529	2021-22: 154	2021-22: \$2,552,104	2021-22: \$984,074
2022-23: 4,965	2022-23: 45,217	2022-23: 349	2022-23: \$3,082,160	2022-23: \$1,214,580



# Questions?