

Assessment Results

2018–2019 State Assessments

- NJSLA and NJSLA–S
- ACCESS for ELLs
- DLM



District Benchmarks

(Fall 2019 vs. Fall 2020)

Presented by:

Jim Barbieri

Director of Curriculum, Instruction &
Human Resources

November 24, 2020

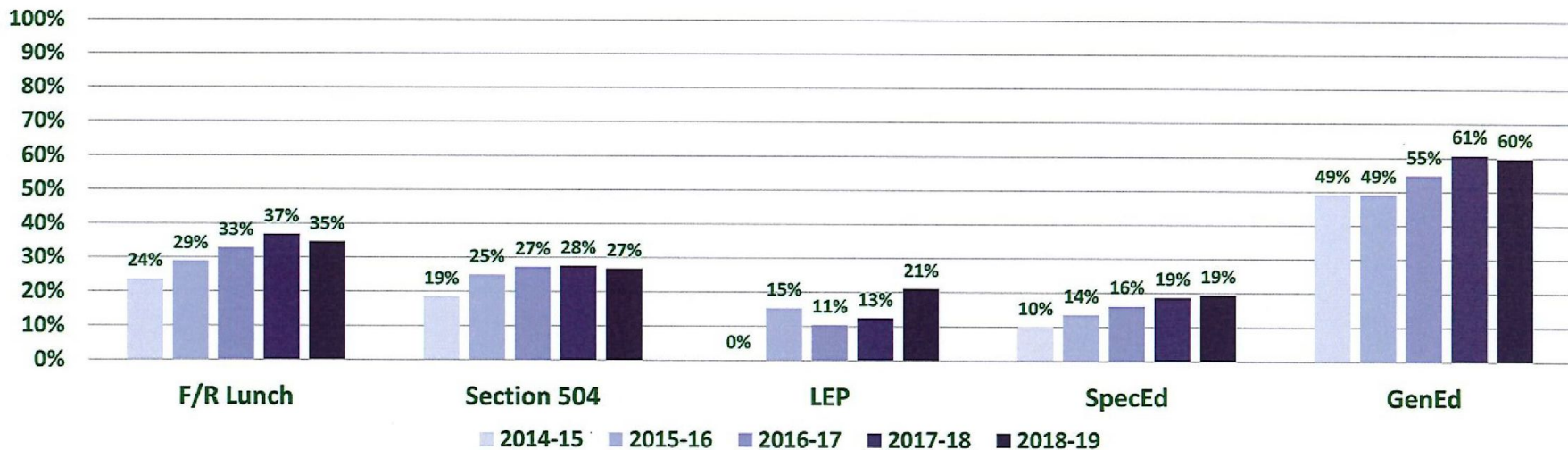
New Jersey Student Learning Assessment (NJSLA)

Assessments designed to measure annual student proficiency in the NJ Student Learning Standards.



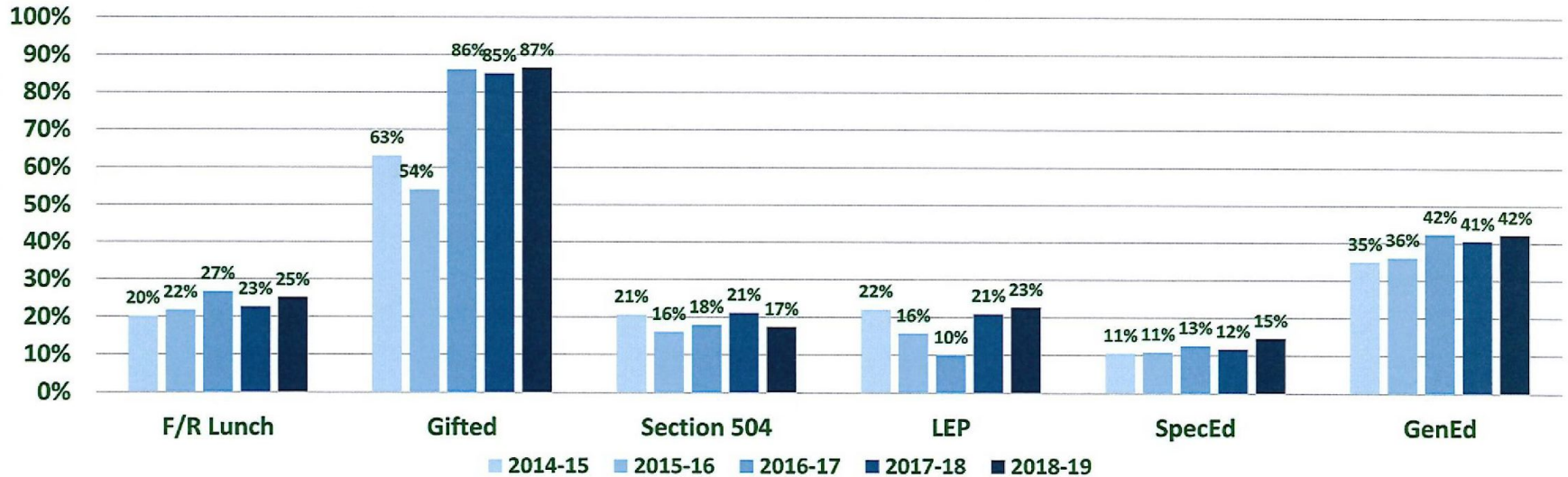
New Jersey
Student Learning
Assessment

% Meeting + Exceeding (ELA All Grades)



Subject	Grade	Program	N-Count	% of	N-Count	% of	N-Count	% of	N-Count	% of	N-Count	% of	% Meeting + Exceeding				
			2014-15	2014-15	2015-16	2015-16	2016-17	2016-17	2017-18	2017-18	2018-19	2018-19	2014-15	2015-16	2016-17	2017-18	2018-19
ELA	All Grades	F/R Lunch	241	15%	346	19%	429	23%	537	29%	652	34%	24%	29%	33%	37%	35%
ELA	All Grades	Gifted	34	2%	35	2%	69	4%	114	6%	142	7%	88%	91%	97%	93%	96%
ELA	All Grades	Section 504	108	7%	128	7%	132	7%	145	8%	149	8%	19%	25%	27%	28%	27%
ELA	All Grades	LEP	12	1%	13	1%	19	1%	16	1%	19	1%	0%	15%	11%	13%	21%
ELA	All Grades	SpecEd	289	19%	353	20%	370	20%	374	20%	385	20%	10%	14%	16%	19%	19%
ELA	All Grades	GenEd	1,264	81%	1,445	80%	1,483	79%	1,482	79%	1,494	79%	49%	49%	55%	61%	60%
ELA	All Grades	All	1,561		1,807		1,868		1,869		1,894		42%	42%	47%	52%	51%

% Meeting + Exceeding (Math All Grades)



Subject	Grade	Program	N-Count	% of	N-Count	% of	N-Count	% of	N-Count	% of	N-Count	% of	% Meeting + Exceeding				
			2014-15	2014-15	2015-16	2015-16	2016-17	2016-17	2017-18	2017-18	2018-19	2018-19	2014-15	2015-16	2016-17	2017-18	2018-19
Math	All Grades	F/R Lunch	242	15%	348	18%	429	22%	541	27%	648	35%	20%	22%	27%	23%	25%
Math	All Grades	Gifted	38	2%	24	1%	65	3%	114	6%	142	8%	63%	54%	86%	85%	87%
Math	All Grades	Section 504	111	7%	130	7%	133	7%	146	7%	149	8%	21%	16%	18%	21%	17%
Math	All Grades	LEP	18	1%	19	1%	20	1%	19	1%	22	1%	22%	16%	10%	21%	23%
Math	All Grades	SpecEd	284	18%	368	19%	388	20%	401	20%	384	21%	11%	11%	13%	12%	15%
Math	All Grades	GenEd	1,268	81%	1,529	80%	1,544	79%	1,590	79%	1,471	79%	35%	36%	42%	41%	42%
Math	All Grades	All	1,565		1,912		1,948		2,007		1,873		30%	31%	36%	35%	36%

COMPARISON OF BARNEGAT TOWNSHIP SCHOOL DISTRICT

Spring 2017, Spring 2018 and Spring 2019 NJSLA/PARCC Administrations

English Language Arts/Literacy - Percentages

Grade	Not Yet Meeting Expectations (Level 1)			Partially Meeting Expectations (Level 2)			Approaching Expectations (Level 3)			Meeting Expectations (Level 4)			Exceeding Expectations (Level 5)			Change in Level 1 + 2 from 2017- 2019	Change in Level 4 + 5 from 2017- 2019**
	2017	2018	2019	2017	2018	2019	2017	2018	2019	2017	2018	2019	2017	2018	2019		
3	11.1	7.7	11.2	11.1	16.5	14.8	22.7	28.1	22.0	49.3	46.2	46.2	5.8	1.5	5.8	3.8	-3.1
4	8.2	4.8	7.7	11.1	12.8	13.0	31.1	23.3	25.7	44.7	45.4	46.4	4.9	13.7	7.3	1.4	4.0
5	4.7	5.7	4.5	15.9	13.9	9.9	25.2	24.6	26.4	44.9	51.2	52.5	9.3	4.5	6.6	-6.1	4.9
6	9.5	9.4	10.8	16.2	17.0	21.6	26.9	25.5	26.4	38.7	34.4	35.2	8.7	13.7	6.0	6.7	-6.2
7	16.9	9.7	8.5	12.7	13.6	11.8	26.7	21.2	27.5	31.8	34.3	30.3	11.9	21.2	21.8	-9.3	8.5
8	15.1	12.3	11.9	17.6	12.7	9.8	19.3	18.6	17.9	37.0	43.2	43.4	10.9	13.1	17.0	-11.1	12.5
9	18.7	12.4	15.9	12.0	14.1	14.2	26.7	29.5	25.8	35.6	37.2	33.5	7.1	6.8	10.7	-0.6	1.5
10	26.2	14.5	18.0	19.3	11.4	12.6	19.7	24.1	21.3	24.5	36.4	31.0	10.3	13.6	17.2	-14.9	13.4

*Grade 11 test was optional for 2018-2019 assessment year. **Level 4 and Level 5 is an indication a student is on pace to be college and career ready.

Note: Data shown is preliminary. Percentages may not total 100 due to rounding.

COMPARISON OF BARNEGAT TOWNSHIP SCHOOL DISTRICT

Spring 2017, Spring 2018 and Spring 2019 NJSLA/PARCC Administrations

Mathematics - Percentages

Grade	Not Yet Meeting Expectations (Level 1)			Partially Meeting Expectations (Level 2)			Approaching Expectations (Level 3)			Meeting Expectations (Level 4)			Exceeding Expectations (Level 5)			Change in Level 1 + 2 from 2017- 2019	Change in Level 4 + 5 from 2017- 2019**
	2017	2018	2019	2017	2018	2019	2017	2018	2019	2017	2018	2019	2017	2018	2019		
3	7.1	5.4	5.4	12.5	19.6	20.2	27.2	26.9	17.5	44.6	41.9	46.6	8.5	6.2	10.3	5.9	3.8
4	7.0	7.0	6.9	20.1	19.3	22.2	34.0	40.4	36.8	36.9	29.4	33.3	2.0	3.9	0.8	2.1	-4.8
5	7.5	9.0	5.8	19.6	17.6	16.1	34.1	29.1	29.8	33.2	38.5	39.7	5.6	5.7	8.7	-5.2	9.6
6	11.0	8.1	13.3	16.5	25.7	28.9	31.1	32.9	26.9	34.3	28.6	26.9	7.1	4.8	4.0	14.6	-10.4
7	7.5	7.9	4.7	22.6	27.3	27.6	37.2	33.3	35.4	32.3	31.0	31.3	0.4	0.5	1.0	2.2	-0.5
8*	26.2	20.9	22.8	15.7	22.5	29.2	35.1	30.8	29.2	23.0	25.8	18.7	0.0	0.0	0.0	10.2	-4.3
ALG I	9.7	11.5	11.5	23.7	19.7	27.7	25.0	27.6	23.1	39.8	40.1	37.3	1.7	1.1	0.4	5.8	-3.8
GEO	9.1	7.4	9.2	31.5	33.5	29.7	34.0	34.5	36.2	23.9	22.7	24.0	1.5	2.0	0.9	-1.7	-0.5
ALG II	9.8	0.0	4.4	9.8	15.6	6.7	23.5	22.2	37.8	54.9	62.2	48.9	2.0	0.0	2.2	-8.5	-5.8

*Approximately 30,000 New Jersey students in grade 8 participated in the PARCC Algebra I assessment. Thus, PARCC Math 8 outcomes are not representative of grade 8 performance as a whole.

**Level 4 and Level 5 is an indication a student is on pace to be college and career ready.

Notes: Data shown is preliminary. Percentages may not total 100 due to rounding.

COMPARISON OF BARNEGAT TOWNSHIP SCHOOL DISTRICT 2017 to 2019 Spring NJSLA/PARCC Administrations

English Language Arts/Literacy - Percentage Changes

Grade	Levels 1 & 2				Level 3				Levels 4 & 5**			
	District		State		District		State		District		State	
3	+	3.8%	+	1.3%	-	0.7%	-	1.1%	-	3.1%	-	0.1%
4	+	1.4%	+	0.7%	-	5.5%	-	2.3%	+	4.0%	+	1.5%
5	-	6.1%	+	0.9%	+	1.2%	+	0.1%	+	4.9%	-	1.1%
6	+	6.7%	-	1.1%	-	0.5%	-	1.7%	-	6.2%	+	2.8%
7	-	9.3%	-	1.0%	+	0.8%	-	2.7%	+	8.5%	+	3.6%
8	-	11.1%	-	1.2%	-	1.5%	-	2.6%	+	12.5%	+	3.7%
9	-	0.6%	-	2.5%	-	0.9%	-	1.8%	+	1.5%	+	4.4%
10	-	14.9%	-	8.9%	+	1.6%	-	3.6%	+	13.4%	+	12.5%

*Grade 11 test was optional for 2018-2019 assessment year. District and State Percentages do not include results for Grade 11.

**Level 4 and Level 5 is an indication a student is on pace to be college and career ready.

Notes: Percentages may not total 100 due to rounding.

The Plus Sign (+) indicates an increase of % change where a Minus Sign (-) indicates a decrease in change.

COMPARISON OF BARNEGAT TOWNSHIP SCHOOL DISTRICT 2017 to 2019 Spring NJSLA/PARCC Administrations

Mathematics - Percentage Changes

Grade	Levels 1 & 2				Level 3				Levels 4 & 5**			
	District		State		District		State		District		State	
3	+	5.9%	-	0.5%	-	9.7%	-	2.1%	+	3.8%	+	2.6%
4	+	2.1%	-	2.3%	+	2.8%	-	1.4%	-	4.8%	+	3.7%
5	-	5.2%	+	3.2%	-	4.4%	-	3.8%	+	9.6%	+	0.6%
6	+	14.6%	+	3.4%	-	4.2%	-	0.3%	-	10.4%	-	3.1%
7	+	2.2%	+	0.7%	-	1.8%	-	3.7%	-	0.5%	+	1.6%
8*	+	10.2%	+	2.1%	-	5.8%	-	0.4%	-	4.3%	+	2.6%
Algebra I	+	5.8%	+	2.0%	-	1.9%	-	3.0%	-	3.8%	+	1.0%
Geometry	-	1.7%	-	1.1%	+	2.2%	=	0.0%	-	0.5%	+	1.1%
Algebra II	-	8.5%	-	0.1%	+	14.2%	+	0.3%	-	5.8%	-	0.3%

*Some students in grade 8 participated in the Algebra I assessment in place of the 8th grade Math assessment. Thus, Math 8 outcomes are not representative of grade 8 performance as a whole. *** NJSLA 2018-2019 assessments were optional for 11th Grade students, District and State results do not include Grade 11 results.

**Level 4 and Level 5 is an indication a student is on pace to be college and career ready.

Notes: Data shown is preliminary. Percentages may not total 100 due to rounding.

The Plus Sign (+) indicates an increase of % change where a Minus Sign (-) indicates a decrease in change.

COMPARISON OF BARNEGAT TOWNSHIP SCHOOL DISTRICT STUDENTS TESTED Spring 2018 and Spring 2019 NJSLA/PARCC Administrations

English Language Arts/Literacy

Grade	Students Tested 2018	Students Tested 2019	Difference between number of students tested in 2018 and 2019
3	260	223	-37
4	227	261	34
5	244	242	-2
6	212	250	38
7	236	211	-25
8	236	235	-1
9	234	233	-1
10	220	239	19
TOTAL	1,869	1,894	25

**** NJSLA 2018-2019 assessments were optional for 11th Grade students.**

Note: "Students Tested" represents individual valid test scores for English Language Arts/Literacy.

COMPARISON OF BARNEGAT TOWNSHIP SCHOOL DISTRICT STUDENTS TESTED Spring 2018 and Spring 2019 NJSLA/PARCC Administrations

Mathematics

Grade	Students Tested 2018	Students Tested 2019	Difference between number of students tested in 2018 and 2019
3	260	223	-37
4	228	261	33
5	244	242	-2
6	210	249	39
7	216	192	-24
8*	182	171	-11
Algebra I	279	260	-19
Geometry	203	229	26
Algebra II	45	45	0
TOTAL	1,867	1,872	5

*Some students in grade 8 participated in the Algebra I assessment in place of the 8th grade Math assessment. Thus, Math 8 outcomes are not representative of grade 8 performance as a whole.

** NJSLA 2018-2019 assessments were optional for 11th Grade students

Note: "Students Tested" represents individual valid test scores for Mathematics.

COMPARISON OF BARNEGAT TOWNSHIP SCHOOL DISTRICT SPRING 2019 NJSLA ADMINISTRATIONS

English Language Arts/Literacy vs. New Jersey

Percentages for 2019

	Not Yet Meeting Expectations		Partially Meeting Expectations		Approaching Expectations		Meeting Expectations		Exceeding Expectations	
	(Level 1)		(Level 2)		(Level 3)		(Level 4)		(Level 5)	
	District	State	District	State	District	State	District	State	District	State
	2019	2019	2019	2019	2019	2019	2019	2019	2019	2019
Grade 3	11.2	14.0	14.8	14.4	22.0	21.4	46.2	42.8	5.8	7.4
Grade 4	7.7	8.6	13.0	12.6	25.7	21.4	46.4	39.1	7.3	18.3
Grade 5	4.5	7.4	9.9	12.5	26.4	22.2	52.5	45.6	6.6	12.3
Grade 6	10.8	7.3	21.6	12.6	26.4	23.9	35.2	40.9	6.0	15.2
Grade 7	8.5	8.9	11.8	10.5	27.5	17.8	30.3	33.1	21.8	29.7
Grade 8	11.9	9.2	9.8	10.3	17.9	17.7	43.4	38.0	17.0	24.9
Grade 9	15.9	11.3	14.2	11.8	25.8	21.1	33.5	36.7	10.7	19.2
Grade 10	18.0	14.3	12.6	10.9	21.3	15.9	31.0	33.4	17.2	25.5

*Grade 11 does not include students who took an AP/IB test.

** NJSLA 2018-2019 assessments were optional for 11th Grade students, state results do not include Grade 11 results.

Note: Percentages may not total 100 due to rounding.

COMPARISON OF BARNEGAT TOWNSHIP SCHOOL DISTRICT SPRING 2019 NJSLA ADMINISTRATIONS

Mathematics vs. New Jersey

Percentages for 2019

	Not Yet Meeting Expectations		Partially Meeting Expectations		Approaching Expectations		Meeting Expectations		Exceeding Expectations	
	(Level 1)		(Level 2)		(Level 3)		(Level 4)		(Level 5)	
	District	State	District	State	District	State	District	State	District	State
	2019	2019	2019	2019	2019	2019	2019	2019	2019	2019
Grade 3	5.4	8.0	20.2	13.9	17.5	23.0	46.6	41.2	10.3	13.9
Grade 4	6.9	8.6	22.2	14.7	36.8	25.7	33.3	43.3	0.8	7.7
Grade 5	5.8	6.4	16.1	20.9	29.8	25.8	39.7	35.8	8.7	11.0
Grade 6	13.3	9.6	28.9	22.5	26.9	27.4	26.9	33.1	4.0	7.5
Grade 7	4.7	7.6	27.6	21.1	35.4	29.3	31.3	33.8	1.0	8.3
Grade 8*	22.8	23.3	29.2	23.1	29.2	24.3	18.7	28.2	0.0	1.1
Algebra	11.5	9.3	27.7	26.0	23.1	21.4	37.3	37.7	0.4	5.6
Geometry	9.2	10.6	29.7	11.7	36.2	21.4	24.0	49.7	0.9	6.6
Algebra II	4.4	10.4	6.7	24.6	37.8	32.8	48.9	26.9	2.2	5.3

*Some students in grade 8 participated in the Algebra I assessment in place of the 8th grade Math assessment. Thus, Math 8 outcomes are not representative of grade 8 performance as a whole.

** NJSLA 2018-2019 assessments were optional for 11th Grade students, state results do not include Grade 11 results.

Note: Percentages may not total 100 due to rounding.

COMPARISON OF BARNEGAT TOWNSHIP SCHOOL DISTRICT'S SUBGROUPS

Spring 2018 and Spring 2019 NJSLA/PARCC Administrations

English/Language Arts - Percentages

	Not Yet Meeting Expectations		Partially Meeting Expectations		Approaching Expectations		Meeting Expectations		Exceeding Expectations	
	(Level 1)		(Level 2)		(Level 3)		(Level 4)		(Level 5)	
	2018	2019	2018	2019	2018	2019	2018	2019	2018	2019
Asian	8.0	8.0	6.0	8.0	16.0	16.0	48.0	44.0	22.0	24.0
Black	20.0	24.1	20.7	19.6	26.2	24.7	27.6	27.8	5.5	3.8
Hispanic	11.8	14.2	17.3	14.2	30.0	28.4	33.3	37.5	7.6	5.7
Multiple	11.3	4.6	12.7	19.5	16.9	32.2	39.4	37.9	19.7	5.7
White	8.0	9.4	13.1	12.5	24.0	23.0	43.8	41.8	11.1	13.2
Female	5.6	6.5	10.5	10.0	22.1	24.1	47.7	44.3	14.2	15.2
Male	13.2	15.3	17.3	16.9	26.5	24.2	35.3	35.8	7.7	7.7
Free or Reduced Lunch	15.6	19.5	21.6	20.1	25.9	25.8	31.5	30.5	5.4	4.1
Gifted	0.0	0.0	0.0	0.0	7.0	4.2	69.3	73.9	23.7	21.8
Section 504	10.3	15.4	29.0	26.8	33.1	30.9	24.1	21.5	3.4	5.4
LEP	12.5	31.6	37.5	26.3	37.5	21.1	12.5	21.1	0.0	0.0
Special Education	34.2	34.5	28.3	25.7	18.7	20.3	17.4	16.9	1.3	2.6
GenEd	3.2	4.8	10.3	10.2	25.6	25.2	47.6	46.1	13.3	13.7

COMPARISON OF BARNEGAT TOWNSHIP SCHOOL DISTRICT'S SUBGROUPS

Spring 2018 and Spring 2019 NJSLA/PARCC Administrations

Mathematics - Percentages

	Not Yet Meeting Expectations		Partially Meeting Expectations		Approaching Expectations		Meeting Expectations		Exceeding Expectations	
	(Level 1)		(Level 2)		(Level 3)		(Level 4)		(Level 5)	
	2018	2019	2018	2019	2018	2019	2018	2019	2018	2019
Asian	2.0	2.0	12.2	18.0	24.5	18.0	55.1	58.0	6.1	4.0
Black	21.8	16.9	25.9	33.1	34.7	27.9	17.7	20.8	0.0	1.3
Hispanic	12.6	13.3	24.4	29.9	34.9	28.8	27.3	26.5	0.8	1.5
Multiple	9.9	14.0	32.4	20.9	25.4	37.2	29.6	25.6	2.8	2.3
White	7.4	7.9	21.8	23.0	31.1	29.8	36.0	35.4	3.7	3.9
Female	7.0	7.0	21.5	23.6	34.4	31.5	33.7	34.8	3.3	3.0
Male	11.1	11.9	23.6	25.5	28.7	27.5	33.8	31.5	2.8	3.6
Free or Reduced Lunch	16.7	15.7	29.8	30.6	30.7	28.5	21.5	24.2	1.3	0.9
Gifted	0.0	0.0	0.9	0.7	14.0	12.7	66.7	66.9	18.4	19.7
Section 504	15.9	16.1	33.1	34.2	30.3	32.2	20.0	17.4	0.7	0.0
LEP	22.2	18.2	38.9	45.5	16.7	13.6	22.2	22.7	0.0	0.0
Special Education	30.3	27.2	35.1	36.8	22.3	21.4	10.9	13.1	1.3	1.6
GenEd	3.7	4.8	19.2	21.1	33.9	31.7	39.7	38.5	3.5	3.8

NJSLA-Science Results: Spring 2019 Administrations



New Jersey Student Learning Assessment – Science (NJSLA-Science)

The NJSLA-Science:

- Is a federally required state assessment administered to students in grades 5, 8, and 11
- Provides a snapshot of student performance on the New Jersey Student Learning Standards for Science (NJSLS-Science).
- Was developed in collaboration with NJ educators, the New Jersey Department of Education (NJDOE), and New Jersey's contracted science vendors
- Is significantly different from the New Jersey Assessment of Skills and Knowledge (NJ ASK) because NJSLS-Science are more rigorous standards and NJSLA-Science focuses on the application of science knowledge and skills rather than memorization of content.

Barneget Township School District's Number of Students Tested in Spring 2019 NJSLA-S Administrations

Grade	Students Tested 2019
5	241
8	230
11	207
Total	678

Note: "Students Tested" represents individual valid test scores for Science.

Comparison of **Barneget Township School District's** Spring 2019 NJSLA-S Administrations to New Jersey Percentages for 2019

Grade	Not Meeting Expectations		Approaching Expectations		Meeting Expectations		Exceeding Expectations	
	Level 1, District	Level 1, State	Level 2, District	Level 2, State	Level 3, District	Level 3, State	Level 4, District	Level 4, State
5	27.8	34.8	43.6	36.0	22.4	22.7	6.2	6.6
8	33.9	35.7	53.9	44.5	11.7	15.3	0.4	4.5
11	52.7	49.0	27.1	23.6	16.4	19.5	3.9	7.8

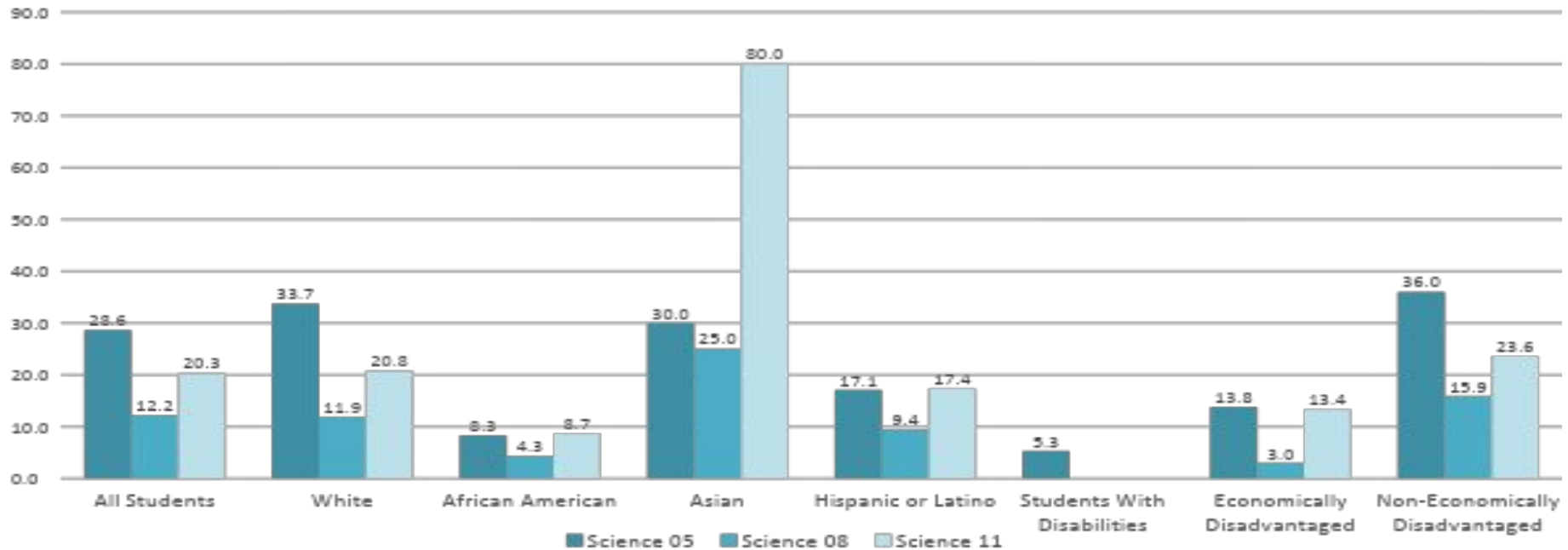
Notes: Percentages may not total 100 due to rounding.

Barnegat Township School District's
2019 Spring NJSLA School- & Grade-Level Outcomes
Science Grade 5 - Percentages

	Not Meeting Expectations	Approaching Expectations	Meeting Expectations	Exceeding Expectations	
	Level 1	Level 2	Level 3	Level 4	% of students at Level 3 and 4
CSCS	28.1	42.2	25.0	4.7	29.7
JTDS	31.4	40.0	22.9	5.7	28.6
LMDS	36.2	34.8	20.3	8.7	29.0
RLHS	17.8	54.8	21.9	5.5	27.4

Subgroup Charts

Science Performance by Demographic Subgroup



Barneгат Township School District's

Notable Science Achievements - SY18-19

- BOE support for purchasing Inspire Science. The teachers love it and the program is engaging for the students
- Teaching through phenomena, aligned with NGSS expectations
- Numerous “Escape Rooms” puzzles and fun interesting Labs to boost student engagement
- Rigorous question types added to daily instruction/LinkIt Benchmarks to review material and make sure it was retained
- Rolling ping pong balls through cardboard tubes from different heights and measuring their distance (connections to math)
- Growing lima beans in different substrates such as sand and cotton balls (who knew?) and then graphing their growth (interdisciplinary connections to math)
- Creating a topographical map where students made their own clay, formed a state and mapped its features
- Online resource videos with content for showing results of experiments over time without having to actually spend the time doing them, and then student apply that to the phenomena
- 5th grade teacher grew vegetables in a hydroponic garden, and students got to eat salad of food they grew themselves

Barneгат Township School District's Intervention Strategies - SY 18-19

- K-2 is integrating more reading into their Science class using the crosscutting concepts of the NGSS which repeat at every grade level. These readers include close reading activities, strategies for ELLs, and simple hands-on activities related to real world experiences.
- 3-5 has close reading activities within each unit that are thought-provoking and require students to use the skills needed on the grade 5 test such as prediction, inference, and explaining phenomena. Additionally, now that teachers have collaboration kits, students are able to experience discovery learning which covers the Performance Expectation from the NGSS as well as deductive reasoning and other higher level thinking skills.
- K-5 is creating a Science Special for 40 minutes 1x/week. This will be aligned to, and in addition to, the K-5 science curriculum to provide more exposure to hands-on learning that emphasizes the Disciplinary Core Ideas of the NGSS where students can apply 1 general core idea to many different phenomena
- 6-8 is revising Science curricula to eliminate redundancies and ensure that all aspects of NGSS are properly addressed through an integrated approach.
- 9-12 has ongoing discussion with teachers re: how we can more effectively prepare students for the NJSLA-Science. This includes increasing the rigor of Lab activities and making sure students can master the Claim / Evidence / Reasoning (CER) format for written response.

Dynamic Learning Maps

Dynamic Learning Maps® (DLM®) assessments are designed for students with the most significant cognitive disabilities for whom general state assessments are not appropriate, even with accommodations. DLM assessments offer these students a way to show what they know and can do in mathematics, English language arts, and science.
(Source: dynamiclearningmaps.org)



DYNAMIC[®]
LEARNING MAPS

REPORT DATE: 07-12-2019

End of Year Report
District Results 2018-19



DISTRICT: BARNEGAT TOWNSHIP (290185)

DISTRICT ID: 290185
STATE: New Jersey

Grade	Subject	Number of Students Tested	Emerging	Approaching Target	At Target	Advanced	At Target or Advanced
3	English Language Arts	10	1	1	7	1	80%
	Mathematics	10	2	4	1	3	40%
4	English Language Arts	7	3	1	1	2	43%
	Mathematics	7	4	0	0	3	43%
5	English Language Arts	7	2	1	2	2	57%
	Mathematics	7	2	1	1	3	57%
	Science	7	2	2	3	0	43%
6	English Language Arts	5	1	3	1	0	20%
	Mathematics	5	2	2	1	0	20%
7	English Language Arts	3	0	1	1	1	67%
	Mathematics	3	1	2	0	0	0%
8	English Language Arts	3	1	1	0	1	33%
	Mathematics	3	2	1	0	0	0%
	Science	3	2	1	0	0	0%
11	English Language Arts	2	0	1	1	0	50%
	Mathematics	2	1	1	0	0	0%
	Science	2	1	0	1	0	50%

ACCESS for ELLs

Assessments designed to measure language proficiency for English Language Learners (ELLs).



Grade	Listening Proficiency Level	Reading Proficiency Level	Speaking Proficiency Level	Writing Proficiency Level	Comprehension Proficiency Level	Oral Proficiency Level	Literacy Proficiency Level	Composite (Overall) Proficiency Level
K	6	2.5	6	3.8	4	6	3.4	4.3
K	5.7	1.9	2.6	2.3	2.7	3.4	2	2.5
K	6	5	6	4.5	6	6	4.6	5.3
K	6	1.7	6	1.9	2.7	6	1.8	3
K	6	1.8	6	2.3	3.3	6	1.9	3.5
K	6	1.5	6	1.7	1.9	6	1.6	2.4
K	1.5	1	1	1.9	1.1	1.3	1.4	1.4
K	3.6	1.2	2.6	1.9	1.5	2.9	1.6	1.7
K	5.7	1.6	3	2.6	1.9	3.6	1.9	2.4
K	6	1.9	6	2.3	3.9	6	2.1	3.6
K	6	3.5	6	4.5	5.4	6	4.3	5
1	5.7	5.3	3.4	3.1	5.5	4	3.5	3.7
1	6	6	3.4	3.4	6	4.6	4.2	4.3
1	6	1.8	2.1	2.8	2.8	3.4	2.2	2.6
1	5.9	5.7	3.9	3.4	5.8	4.4	3.8	4
1	6	3.7	2.9	3.2	5	3.9	3.4	3.5
1	6	3.7	2.9	2.8	5.3	4.2	3.1	3.4
1	6	2.6	4.3	2.8	5.1	5.9	2.8	3.6
1	5.1	1.8	4.3	1.7	2.5	4.5	1.8	2.3
1	2.7	3.2	1.8	2.3	3	2	2.6	2.4



Scale of Proficiency (1-6)

1. Entering
2. Emerging
3. Developing
4. Expanding
5. Bridging
6. Reaching

4.5 or higher, student becomes eligible for consideration to exit the program



Grade	Listening Proficiency Level	Reading Proficiency Level	Speaking Proficiency Level	Writing Proficiency Level	Comprehension Proficiency Level	Oral Proficiency Level	Literacy Proficiency Level	Composite (Overall) Proficiency Level
2	5.5	3.1	1.6	3.3	3.9	2.6	3.3	3
2	1.7	1.5	1	1	1.5	1.4	1.3	1.3
2	6	5	3.1	3.6	5.9	4.5	3.8	4
2	6	6	3.4	3.8	6	4.9	4.4	4.6
2	1.9	2.8	2.5	3	2.3	2.2	2.9	2.6
3	4.3	2	3.3	3.2	2.7	3.6	2.8	3.1
4	5.8	5.5	3.5	4.2	5.6	4.2	4.5	4.4
4	5.8	5.5	3.5	4.2	5.6	4.2	4.5	4.4
4	1.9	1.8	1.5	1.8	1.8	1.7	1.8	1.7
5	3.3	1.9	1.8	2.2	2.1	2.2	1.9	2
7	3.9	1.9	3.6	3.1	2.4	3.7	2.5	2.9
8	2.9	1.7	1.6	1.5	1.9	1.9	1.7	1.8
8	5.3	1.7	1	2.1	2.1	1.8	1.8	1.8
8	4.2	1.8	2.6	2.7	2.3	3.2	2	2.5
9	4.6	2.7	2.8	3.7	3.3	3.4	3.4	3.4
9	3.1	2.1	2.2	3.5	2.5	2.6	3	2.9
10	6	6	3.5	4.2	6	4.8	4.7	4.7
10	6	6	3.5	4.7	6	4.6	5.2	5
12	6	3.7	3.2	3.4	5.3	4.4	3.5	3.8
12	1.8	2.7	2.5	2.8	2.3	2	2.7	2.5
12	3	1.9	2.5	4	2	2.7	3.1	3

Scale of Proficiency (1-6)

1. Entering
2. Emerging
3. Developing
4. Expanding
5. Bridging
6. Reaching

4.5 or higher, student becomes eligible for consideration to exit the program

Actionable Steps Taken to Improve Student Achievement



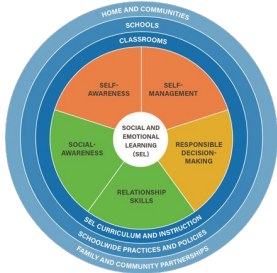
Continuing from SY18-19....

- Evaluations, SGOs & PDPs through Genesis
- SIOP Training for ELLs
- Infusion of NJSLA-like questions
- Professional Development Academy
- LinkIt
- Online Resources

New in SY19-20....

- New Grading Scale
(F = 64, not 70)
- GPA & Category Weights
- Benchmarks count
- Course Participation
- Lesson plan template
- “Second Chances”
- 4 Majors, 8 Minors, 2x Course Participation

Professional Development Academy



Year 1

- Prepping / Planning / Assessing
 - Classroom Management, Social-Emotional Learning, ABCDs of Objective Writing, Unit Planning Restorative practice
 - Inclusion, Power of Two, Differentiated Instruction,
 - Educational Technology, UDL, Assessment Design

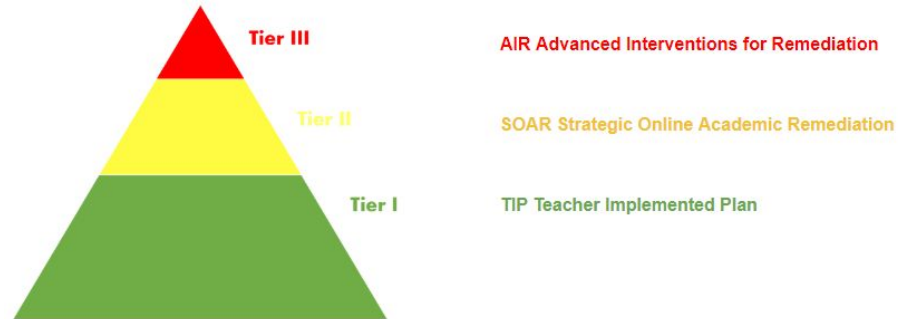
Year 2

- Using Data to Drive Instruction
 - Reflect on the use of data in your classroom.
 - Learn how to create groups and run reports in LinkIt!
 - Create units featuring differentiated learning.
 - Create SGO data tables for this school year.



RTI Programs providing Tiered levels of support

- **TIP** (Teacher Implemented Plan)
- **SOAR** (Student Online Academic Remediation)
- **AIR** (Advanced Interventions for Remediation)
- Before school
“Bootcamp”



So... Where are we now???

Benchmark Data Analysis Fall 2019 vs. Fall 2020

- “Apples to Apples”
 - Same students, different grade
- “Apples to Oranges”
 - Same grade, different students



Value of Benchmarks via LinkIt:

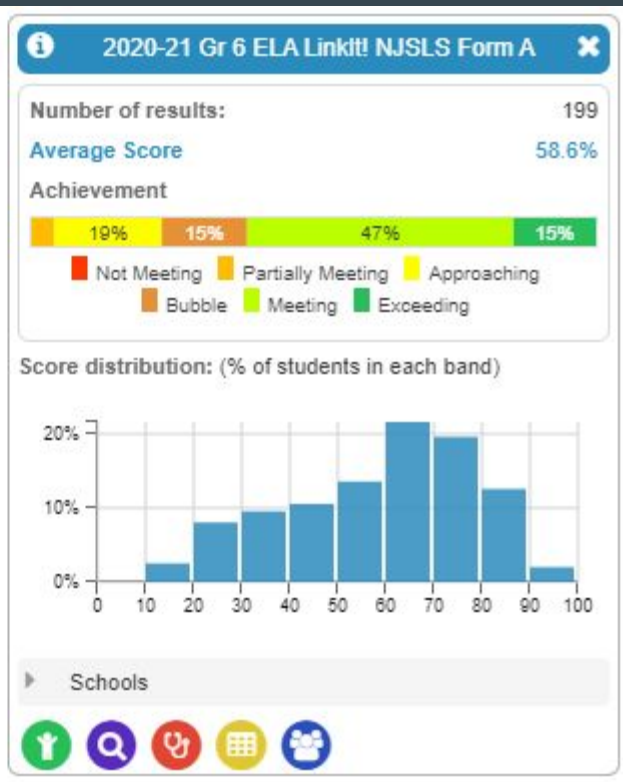
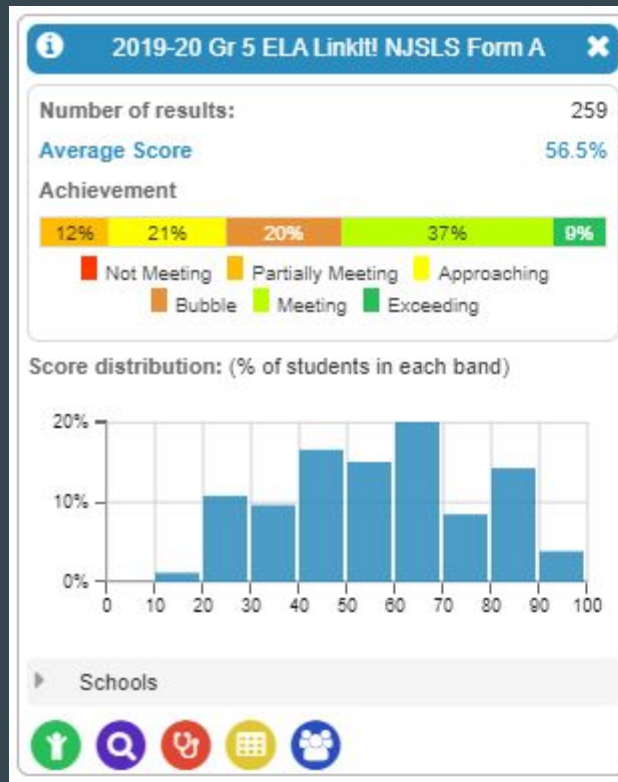


1. Able to identify strengths and weaknesses at the cohort level, teacher level, student level.
2. Predictive of student performance on NJSLA.
([LinkIt Cut-Scores](#))
3. Propels data-driven decision making at all levels.

“Apples to Apples” Comparison:

Same students, but different grades in school

(ex. Fall 2019 Grade 5
→ Fall 2020 Grade 6)



Overall Summary

Synopsis of progression from one grade level to the next.

Increase or decrease of % students on: Bubble, Meeting, Exceeding Expectations

 = **more** students proficient in 2020 vs. 2019

 = **fewer** students proficient in 2020 vs. 2019

ELA	+ / -	Math	+ / -
3 to 4	-	3 to 4	-
4 to 5	+	4 to 5	-
5 to 6	+	5 to 6	-
6 to 7	+	6 to 7	-
7 to 8	+	7 to 8	-
8 to 9	-	8 to 9	-
9 to 10	+	9 to 10	-
10 to 11	-	10 to 11	+

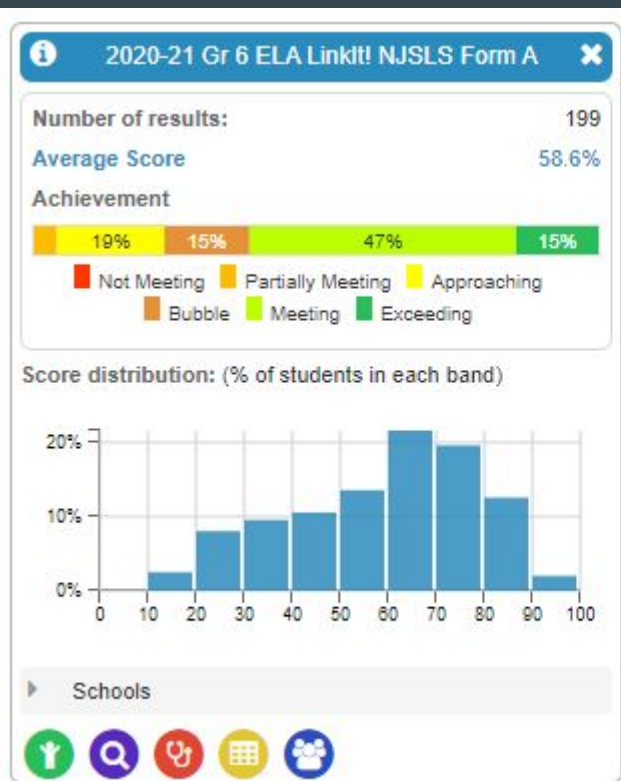
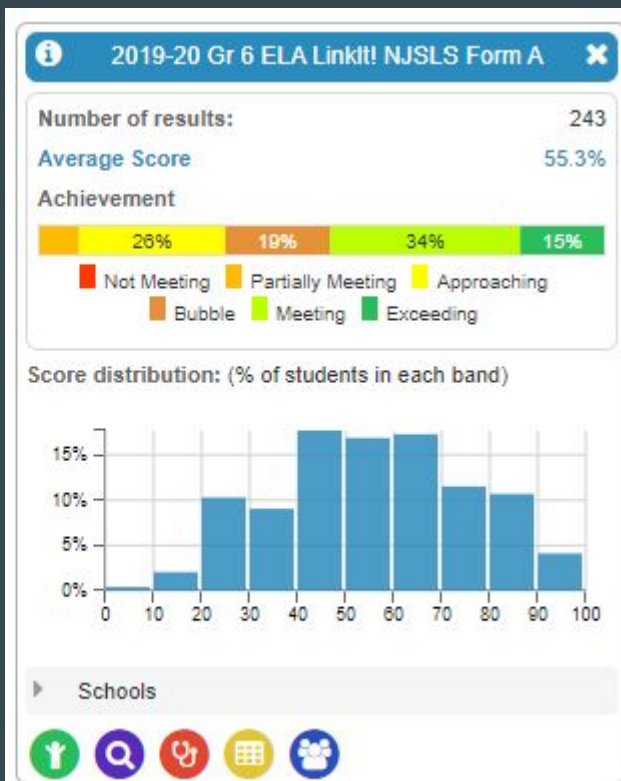
Same students, different grade // Key takeaway points:

- Learning loss from COVID-19 hit Math harder than ELA.
- For the majority of grades, **students are stronger in ELA now than they were last fall.** A greater % of students are on-grade now than they were this time last year.
- So, for ELA **students actually gained ground** despite the public health crisis.
- Literacy interventions are working.

“Apples to Oranges” Comparison:

Different students,
but same grade level

Grade 6 Fall 2019 vs.
Grade 6 Fall 2020



Overall Summary

Synopsis of the same grade level,
Fall 2019 vs. Fall 2020.

Increase or decrease of % students
on: Bubble, Meeting, Exceeding
Expectations

+ = **more** students proficient in 2020 vs.
2019

- = **fewer** students proficient in 2020
vs. 2019

ELA	+ / -	Math	+ / -
Gr. 3	-	Gr. 3	-
Gr. 4	-	Gr. 4	-
Gr. 5	-	Gr. 5	-
Gr. 6	+	Gr. 6	+
Gr. 7	+	Gr. 7	+
Gr. 8	-	Gr. 8	-
Gr. 9	+	Gr. 9	+
Gr. 10	+	Gr. 10	+
Gr. 11.	-	Gr. 11.	-

Same grade, different students // Key takeaway points:

- Some grades were clearly more successful than others.
- For the grade levels that demonstrated success, **that success occurred in both Math and ELA.**
- Drill down analysis to identify the “best practices” that worked in these grade levels.
- Upper elementary grades will benefit from reconfiguration to assist with **collaboration and common planning in their Professional Learning Communities (PLCs).**

Looking ahead...

Continuing to promote
student achievement



- Supporting students, especially **social-emotional** wellbeing
 - Boosting **student engagement**, especially virtual learners.
 - Using data to **identify any learning gaps** from last year, and addressing them through RTI
 - RTI / Data Coaches
 - Supporting **teachers** in this new environment.
 - PLCs & Master Teachers
-

Thank you!

Please reach out with any questions.

Office of Curriculum & Instruction

jbarbriere@barnegatschools.com

609 698 5800 x5145

