

ORCA STRONG • POD STRONG

Facilities Advisory Committee

Welcome to Alcott Elementary!

Thursday, February 22, 2024

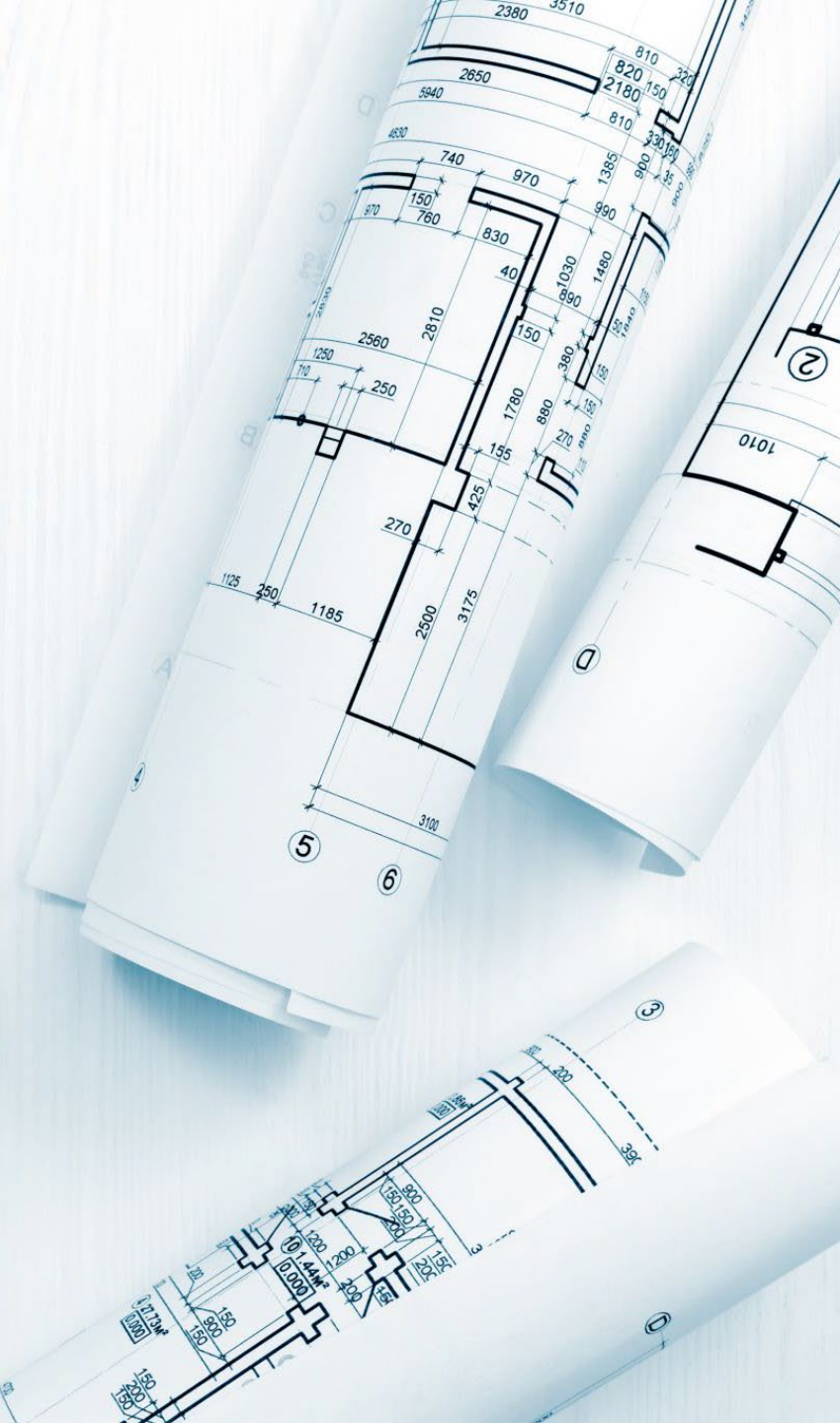
5:30-7:30

SUCCESS EVERY DAY FOR EVERY STUDENT

Agenda

Focus: Construction Updates and Input

- 5:30-5:45: ***Communication Plan Update w/ Shannon***
- 5:45-6:40: ***Capital Projects Update w/ Brian***
 - Eastside High School Capacity
- 6:40-6:45 **Break**
- 6:45-7:10: ***Construction Planning w / Laura & Toby***
 - Introduction to SCIT Pre-Design: Alcott, Smith, Evergreen, Kamiakin
 - Alcott Community Meeting
- 7:10-7:30: ***Alcott Elementary – Portable Tour***



Communication Plan Update – We heard you!



What to share:

Find ways to visually show data.
Brand/theme all communications about capital projects.
Share how projects impact everyone across the district.
Translate complex issues in a simple way.
Connect with the community.
Make content in newsletters short with links to read more on the website.



How to communicate plans and progress with the community:

Think about how to filter/target communication.
Find ways to continue to engage in conversations throughout the summer months.



Involve the community:

Connect with student groups.
Connect with big organizations in our area (i.e., Microsoft, Google, others).
Go out to the community to connect:

- Hold meetings at big apartment complexes.
- Have booths/presence at community events.

Data mine to share information with specific/key groups.
Host parent information nights and community information nights hosted at schools and in the community.
Leverage schools to communicate with parents.

Strengthening Communications Moving Forward



- **Continuing to develop and work on Building Excellence Construction Levy Communications Plan.**
 - Regular social media posts (including a “Finance Friday” feature)
 - Newsletter articles for district-wide e-news and school-specific newsletters
 - Targeted newsletters about each construction project
 - Participation in community events: Derby Days (Redmond) – July 13, Rig-a-Palooza (Sammamish) – May 11, Big Truck Day (Kirkland) – August 18
 - Re-design LWSD Construction webpages with support from website vendor (making it easier to navigate and review information)
 - Printed mailers out to community (2x per year).
 - Videos on aging facilities and updates/highlights of projects from 2022 levy.
 - Utilizing “Building Excellence” logo and colors in designs around levy communications.
 - Community meetings (i.e., Alcott meeting we will discuss later)
- **Timeline: February 2024-November 2024**



Capital Projects Update

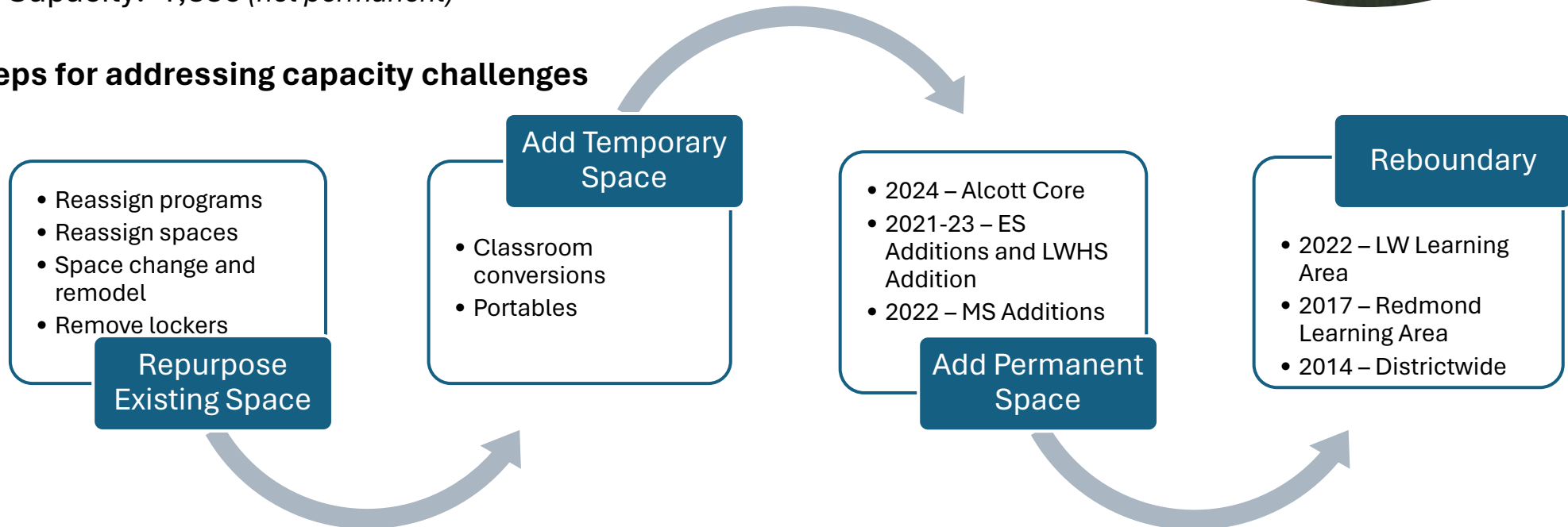
2022 Construction Levy: Eastside High School Capacity

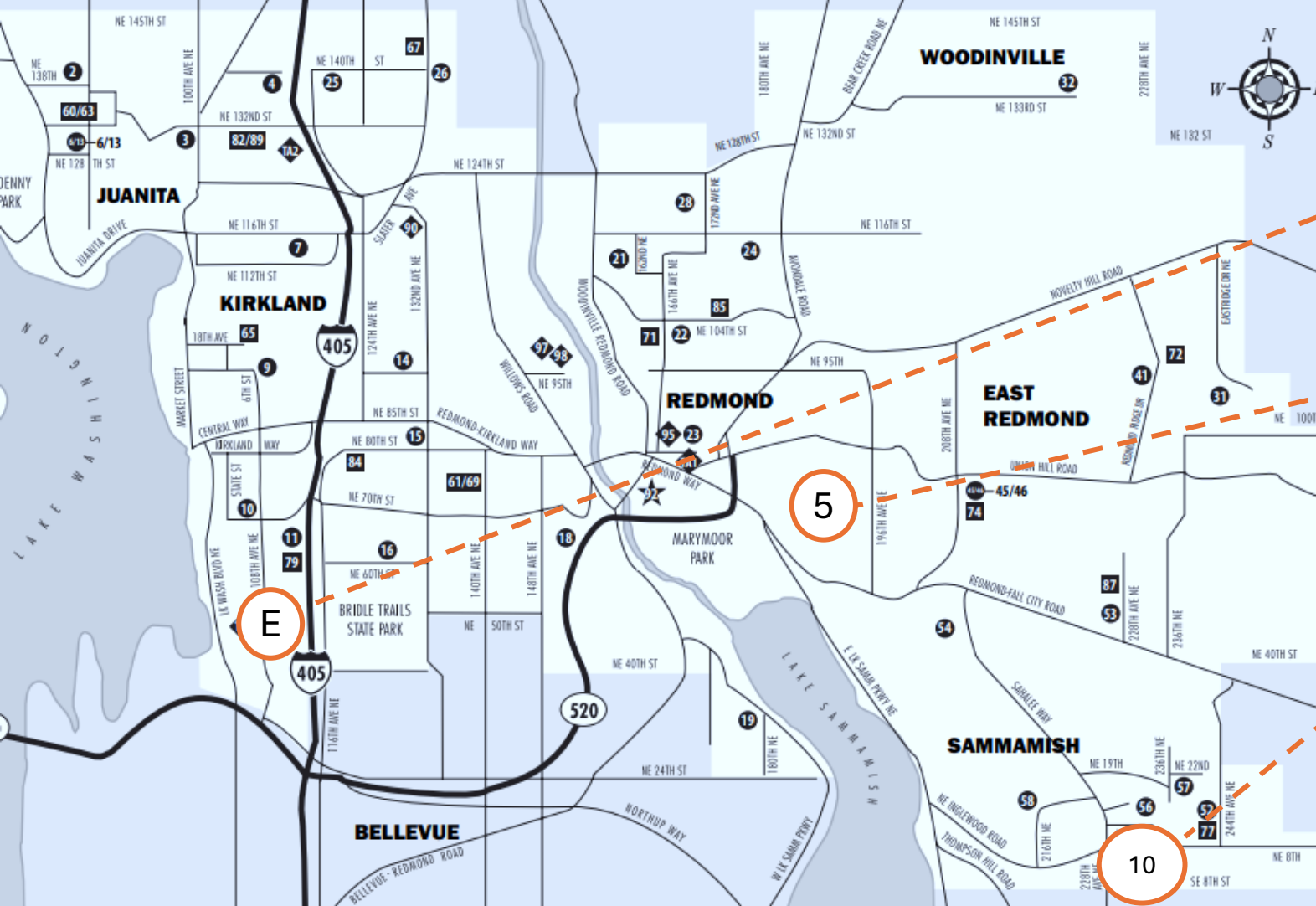
Eastside High School Capacity



- Current Enrollment and Capacity Impacts
 - Eastlake HS:
 - Enrollment: 2,287 (10/2023)
 - Capacity: 2,337 (*net permanent*)
 - Redmond HS:
 - Enrollment: 2,175 (10/2023)
 - Capacity: 1,886 (*net permanent*)

Standard steps for addressing capacity challenges



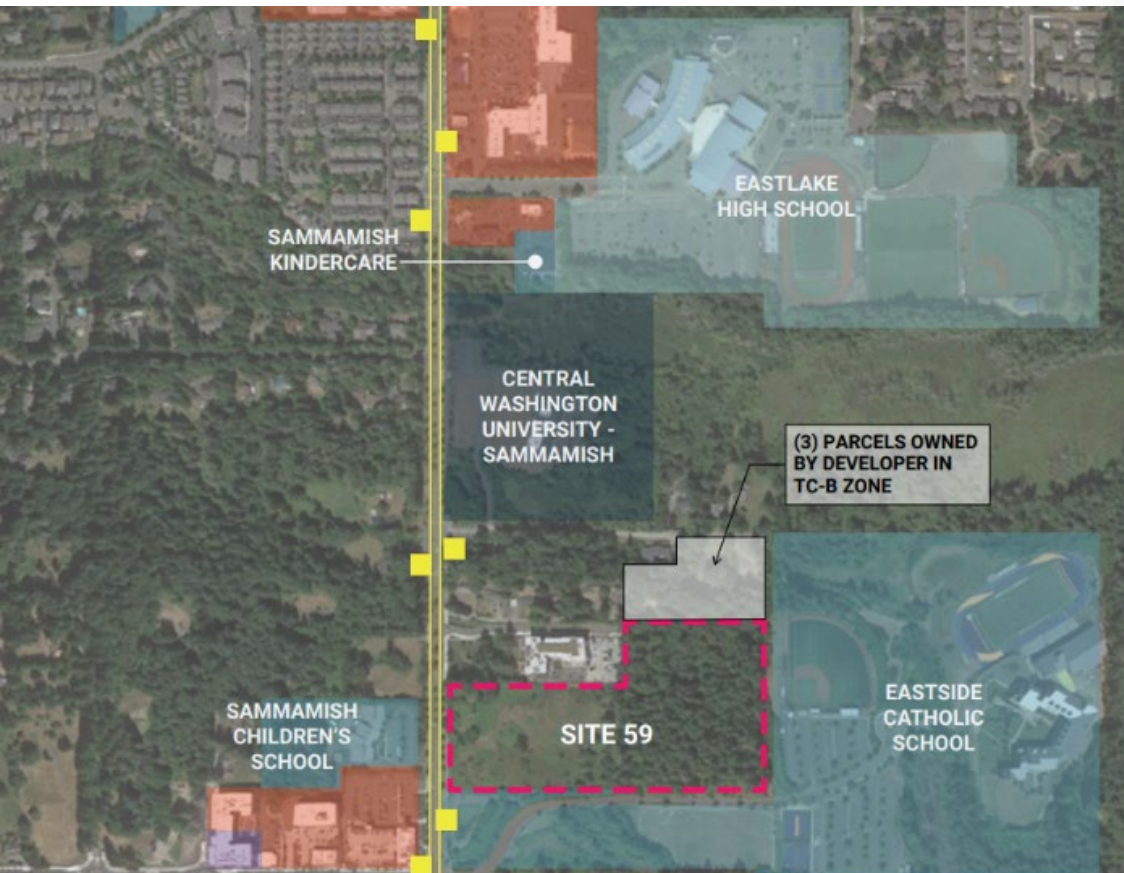


- Westside
 - Emerson site selected for rebuild & enlarge (Kirkland)
- Eastside
 - Originally planned for 5th Comprehensive High School (Redmond)
 - Short Term Flexible Remedy: HS10 @ Site 59 (Sammamish)
- Decision-making process
 - FAC input
 - Levy approval and allocation
 - Cabinet/School Board option review

High School Capacity – Planned Solutions

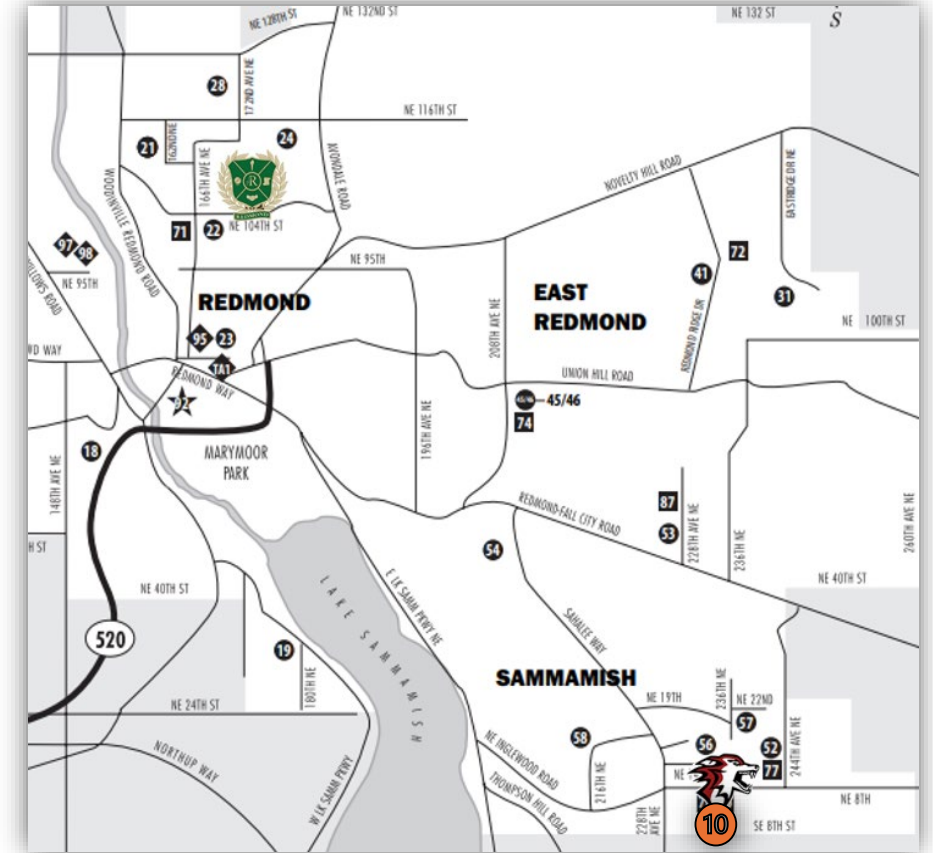
HS10 @ Site 59 (Sammamish)

- Location and Facility Design – Spring 2022
- Program planning – Fall 2023
- Considering Alternatives – Winter 2024



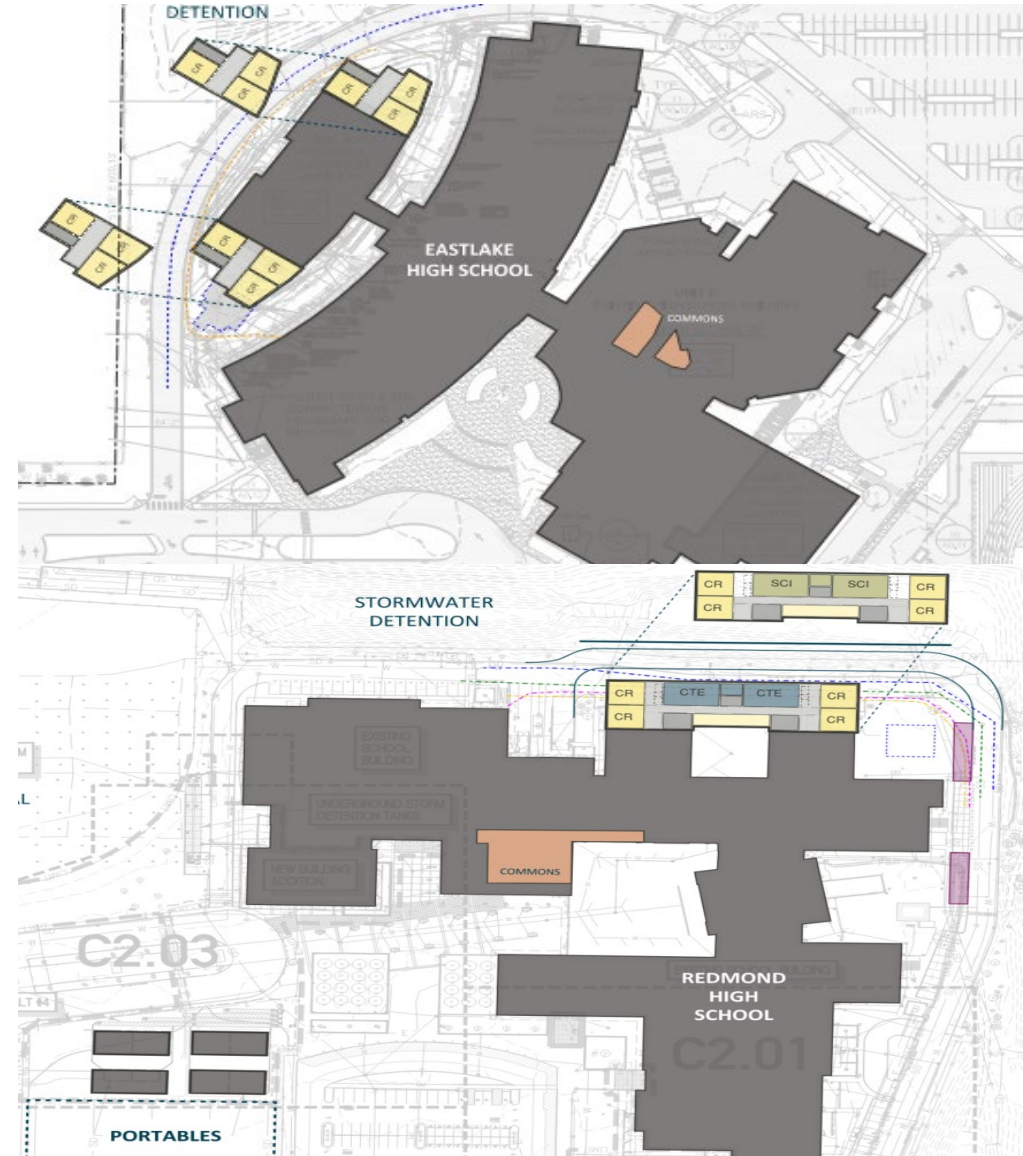
BUILDING DESIGN

- Challenges
 - Location limits equitable access
 - Programmatic limitations
 - Permitting uncertainties and delays
- Realistic Timelines
 - Fall 2026 Opening (Full Facility)
 - Scope of required road construction adds additional development and permitting
- Project expenditures to date- \$3.3M



Capacity Alternative 1: EHS/RHS Standard Additions

- Options for classroom additions
- Core space remodel
 - Adding covered outdoor spaces
 - Potential remodel of common spaces
 - Remove lockers to expand hallway capacity
- Timelines
 - *Likely* Fall 2026 opening



Capacity Alternative 2: EHS/RHS **Modular** Additions

- Modular structure instead of permanent construction
- Pre-fab process reduces construction time
- Modular more cost effective than permanent construction
- Timelines
 - *Potential* Fall 2025 opening



FAC Input: EHS/RHS Capacity

- What are community considerations for adding additional space to EHS and RHS?
- What information would be helpful for our community?



Break!

Coming Up:

- 6:45-7:10: ***SCIT Update w / Laura & Toby***
 - New Construction Planning Sites: Alcott, Smith, Evergreen, Kamiakin
 - Alcott Community Meeting
- 7:10-7:30: ***Alcott Elementary – Portable Tour***





Introduction to School Construction Input Team (SCIT)

New Construction Planning Sites: Alcott, Smith, Evergreen, Kamiakin



What is SCIT?

A group of diverse and knowledgeable school community stakeholders assembled during pre-construction phase to assist capital team in prioritizing programming and informing design for the campus master plan and new facilities.



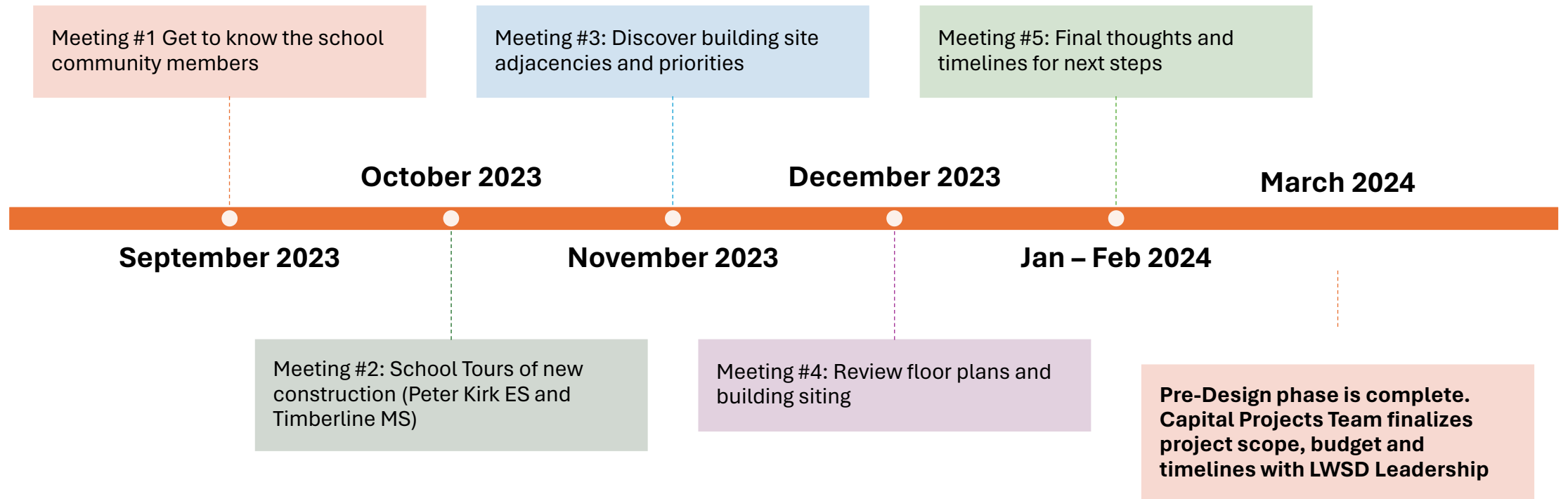
New Pre-Design Process



- Previous FAC recommended early engagement
- SCIT engagement *prior* to fully funded projects
- Project scope (renderings), budget and schedule prepared with community and industry professional input for the future measure
- Allows for creation of “proof of concept” to inform voters
- Construction efficiencies include:
 - Bundled elementary and middle school projects – same architect and contractor
 - Middle school sites include master planning to ensure optimal utilization for future phases

2022 Construction Levy SCIT Timelines

Work Items and Milestones: September 2023 – March 2024



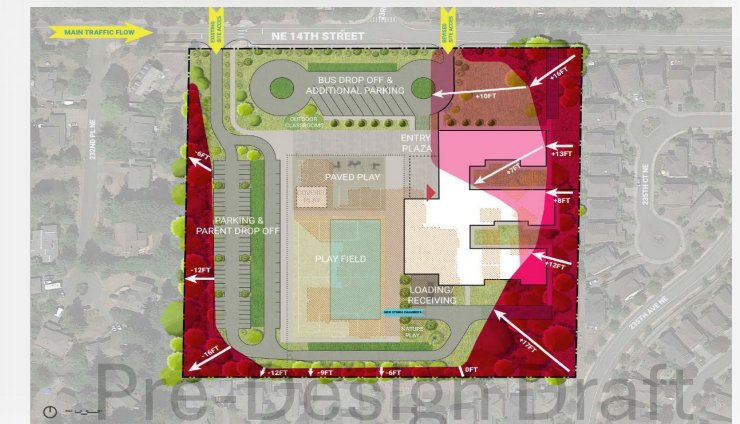
Pre-Design Phase: Alcott Elementary

Pre-Design renderings shown below are all conceptual, design phase in progress



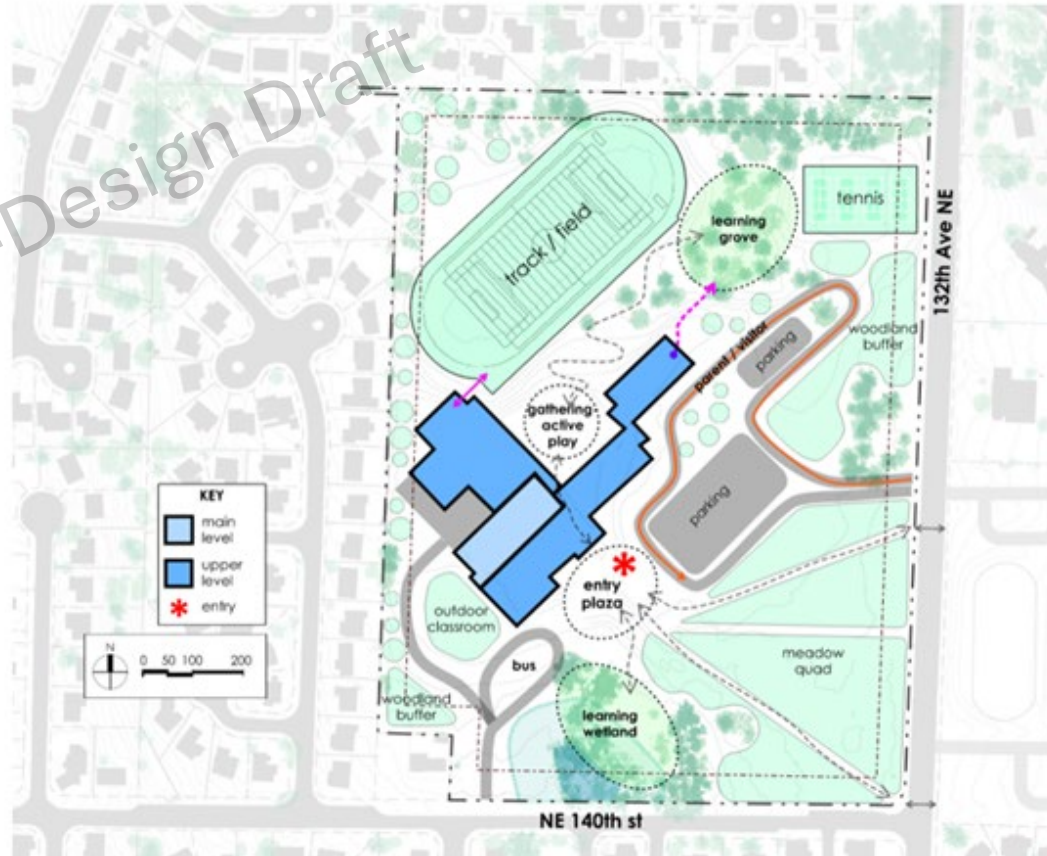
Pre-Design Phase: Smith Elementary

Pre-Design renderings shown below are all conceptual, design phase in progress

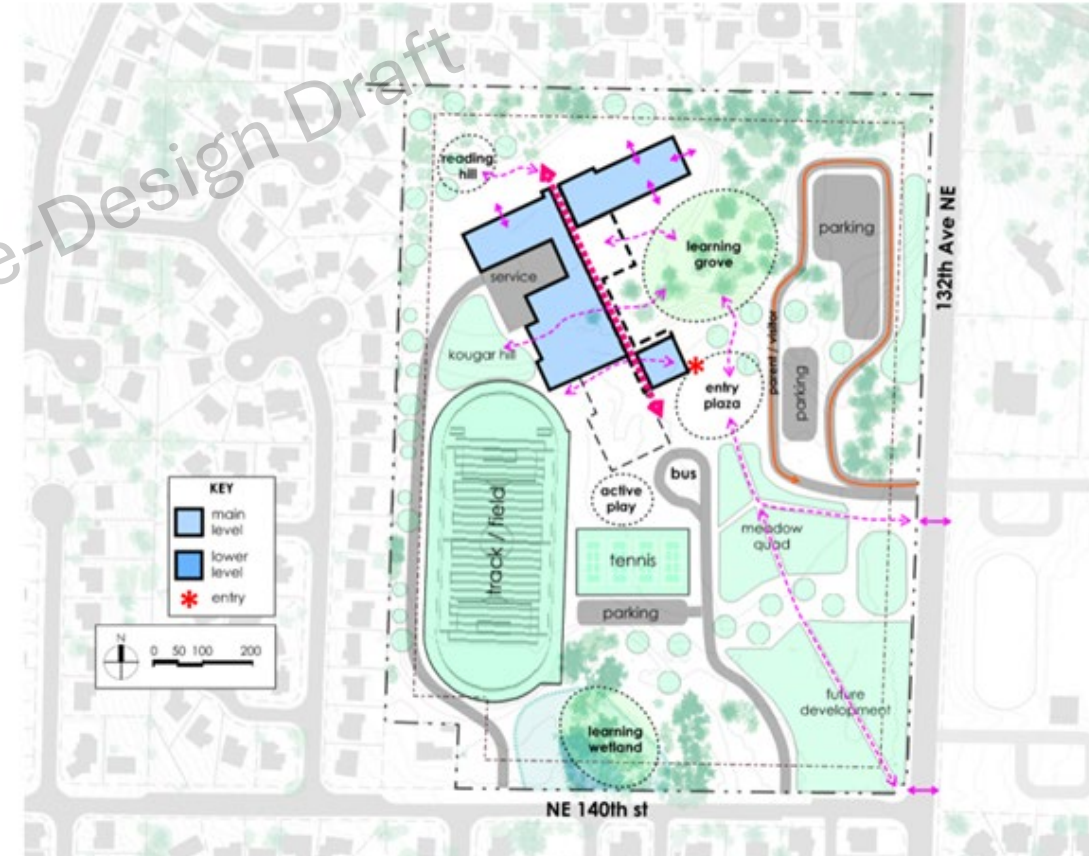




SITE DEVELOPMENT SCHEME 'A' —



SITE DEVELOPMENT SCHEME 'B' —

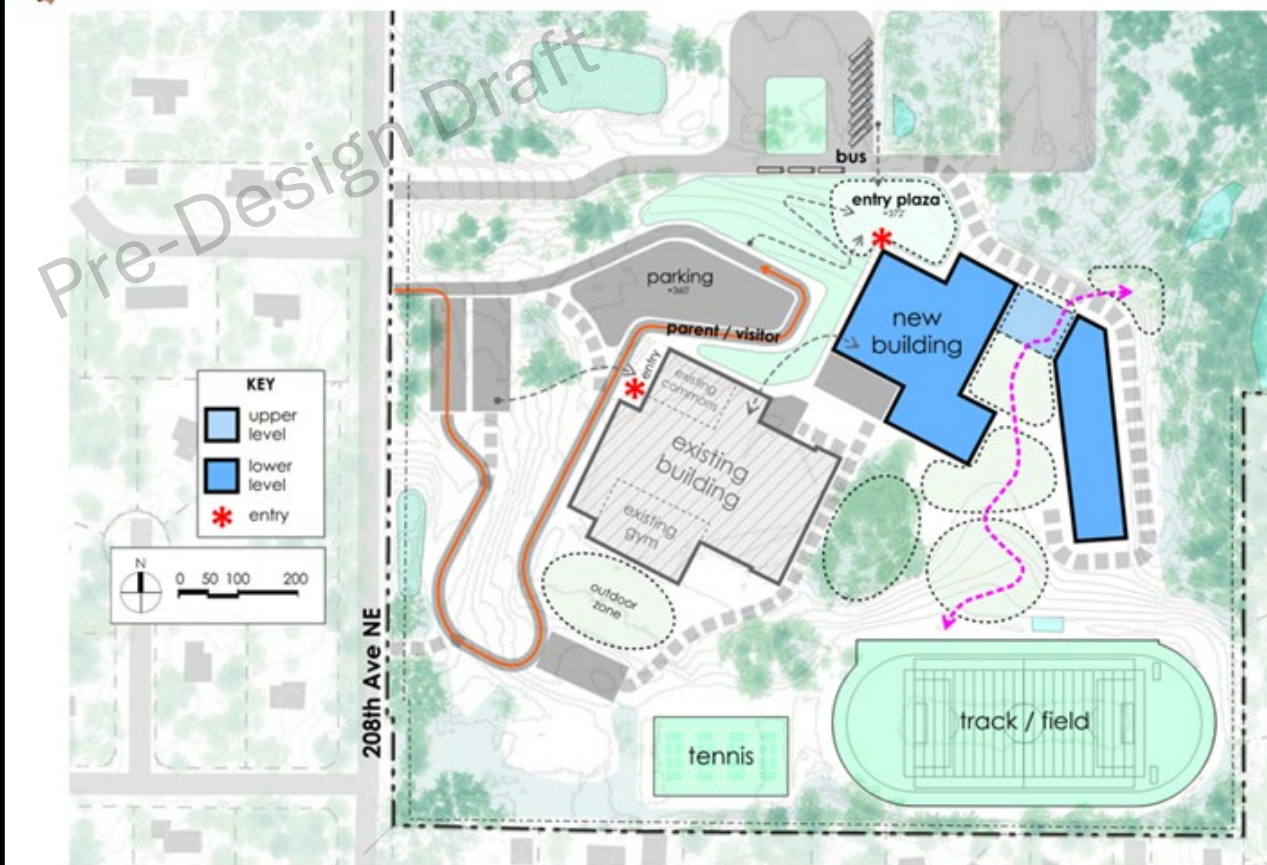


Pre-Design Phase: Kamiakin Middle School

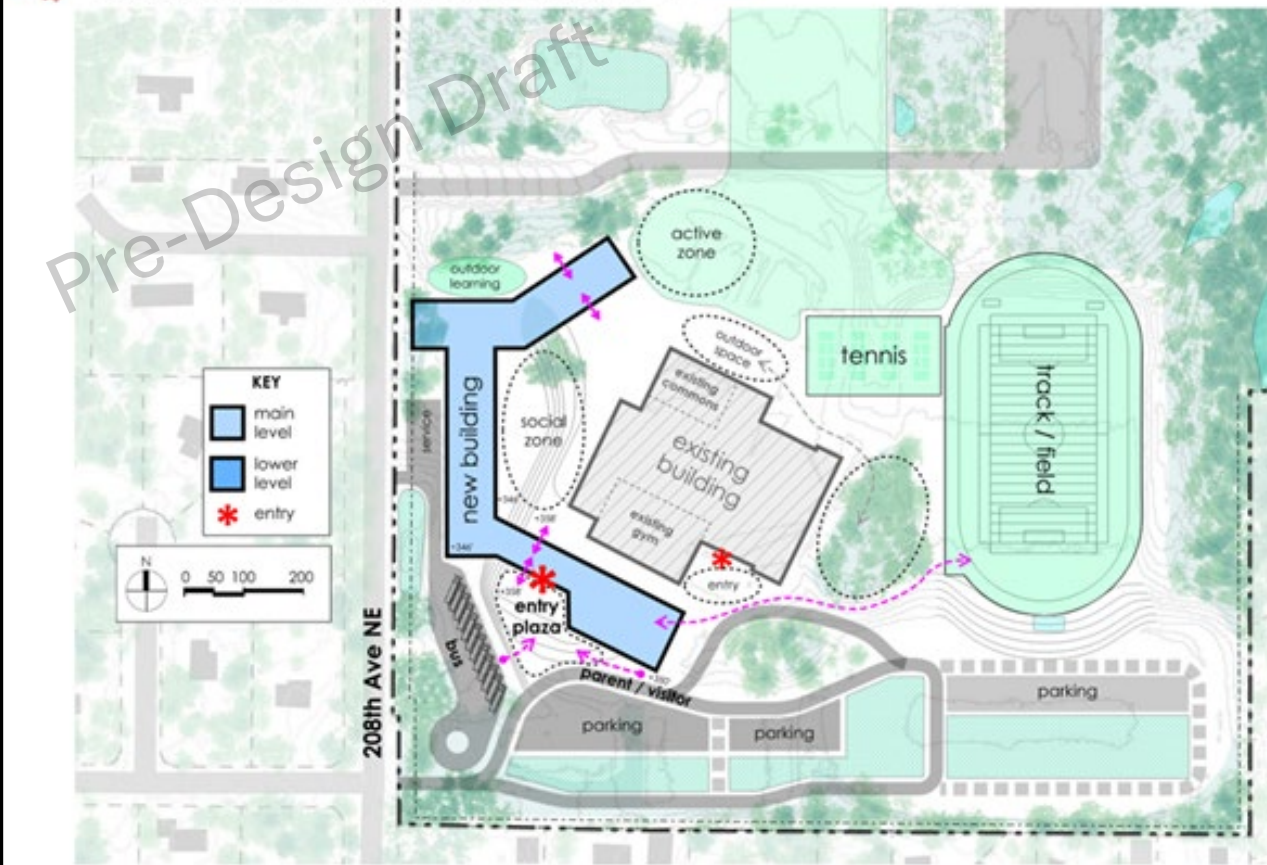


Pre-Design site plans shown above are all conceptual, design phase in progress

SITE DEVELOPMENT SCHEME 'A'



SITE DEVELOPMENT SCHEME 'B'



Pre-Design Phase: Evergreen Middle School

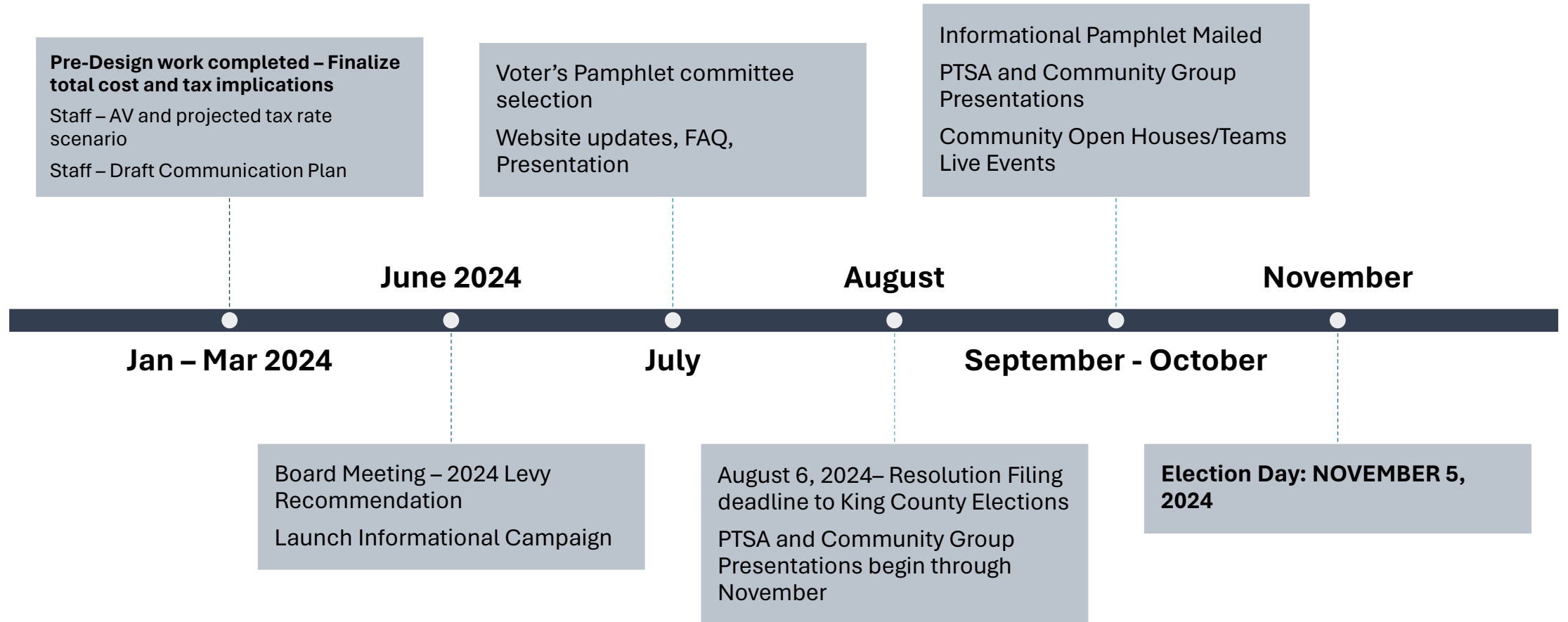
Pre-Design site plans shown above are all conceptual, design phase in progress



Construction Levy Timeline

November 2024 Election

Work Items and Milestones: January 2024 – November 2024



FAC Input: Pre-Design Process

- Questions/comments related to the pre-design process



Alcott Community Meeting

Thursday, February 29 @ 5:30PM

ALCOTT FAMILIES:
PLEASE JOIN US!
FUTURE ALCOTT CONSTRUCTION
COMMUNITY MEETING



*Design in progress

 **ALCOTT ELEMENTARY LIBRARY**

 **THURSDAY**
February 29 | 5:30 p.m.



BUILDING EXCELLENCE



BUILDING EXCELLENCE

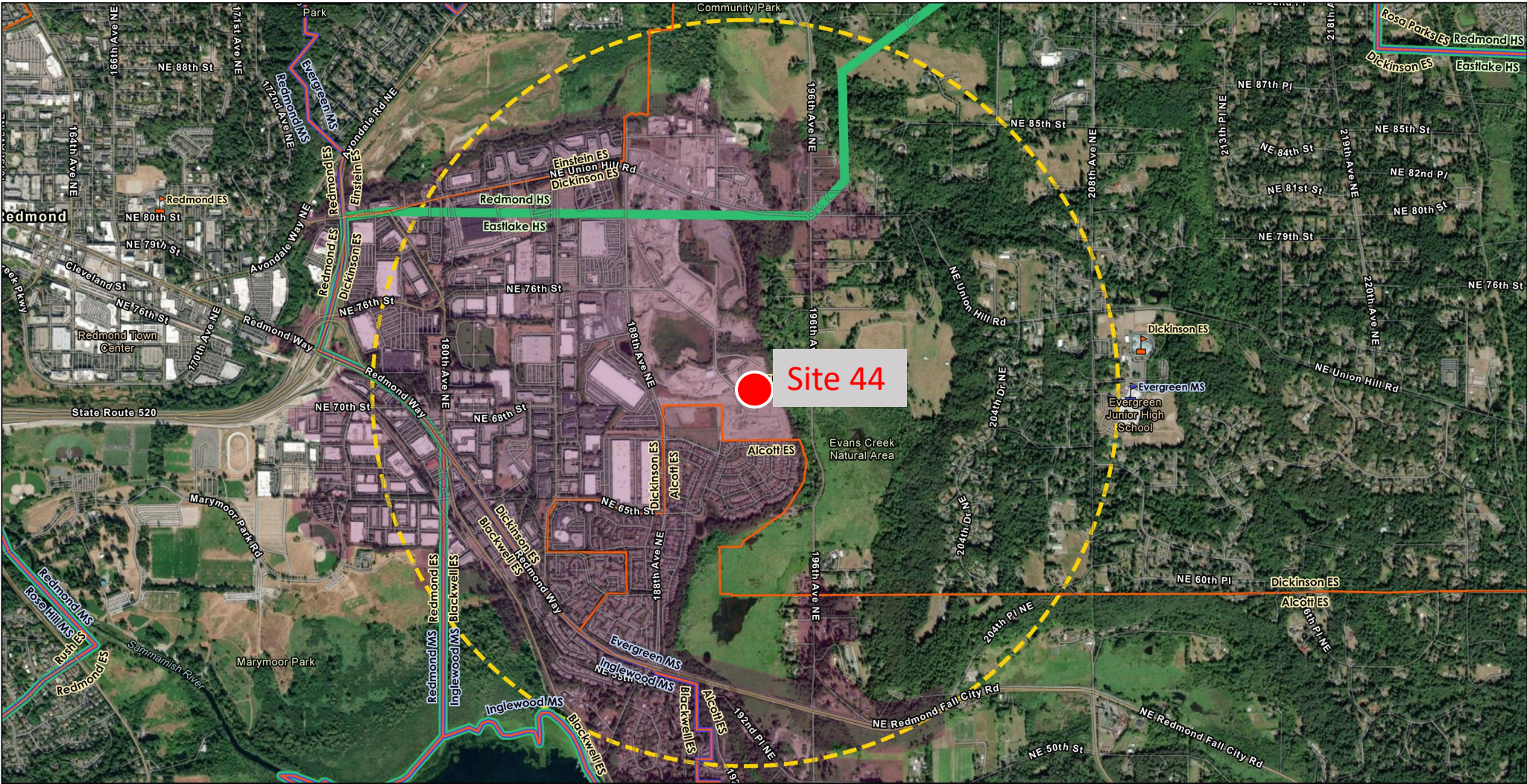


Potential Option to Rebuild & Enlarge Alcott on Site 44 (*Cadman*)

- Anticipated Benefits
 - Walkable “community” school for majority of students
 - Improved traffic and access
 - Construction disruption minimized with separate site
 - Reduction in the number of bus routes
- Potential options for current Alcott site
 - Use existing building as temporary swing site
 - Future expansion of Choice HS – Gym, Commons, Sports Fields
 - *Current growth management restrictions may limit new secondary construction*

❖ Alcott Community Information and Input Meeting planned for next week

Site 44 (Park 188/Cadman)



Approximately 600
Elementary students
within mile radius

Nearly 400 currently
attend Alcott



- | | | |
|-------------------|-----------------------------------|---------------------------|
| Elementary School | Elementary School Attendance Area | 1-mile Radius |
| Middle School | Middle School Attendance Area | 1.5-mile Walking Distance |
| High School | High School Attendance Area | |



FAC Input: Alcott Location

- Considerations as we prepare for the Alcott Community Meeting?
- Information that families would need regarding the potential options?

☐ Are any FAC reps available to join?

ALCOTT FAMILIES:
PLEASE JOIN US!
FUTURE ALCOTT CONSTRUCTION
COMMUNITY MEETING



*Design in progress

ALCOTT ELEMENTARY
LIBRARY

THURSDAY
February 29 | 5:30 p.m.



Future Work Plan Outline

Date	Location	Topics
February 22	Alcott Elementary	<ul style="list-style-type: none">• Communication Plan Update; SCIT team updates; Aging school designs; Tour of portables – old and new
March 21	Kamiakin Middle School	<ul style="list-style-type: none">• Building Excellence – Phase 1 Updates; New in lieu studies; Emerson HS
April 18	Redmond High School	<ul style="list-style-type: none">• Building Excellence – Phase 2 Updates
May 16	Mead Elementary	<ul style="list-style-type: none">• Funding measure update
June 20	Kirkland Middle School	<ul style="list-style-type: none">• Maintaining facilities; Maintaining vs. expanding vs. rebuilding; Construction Tour – Modular Addition

❖ *Content of agendas may evolve*



School Tour: Alcott Elementary

Portables

Portables at Alcott

- 12 portable classrooms
- Various ages of portables (1986, 1988, 1989, 2007, 2014, 2016)
- Installations in 2004, 2007, 2014, and 2016
- Have maximized options for space additions

