

Facilities, Planning and Construction

August 15, 2023



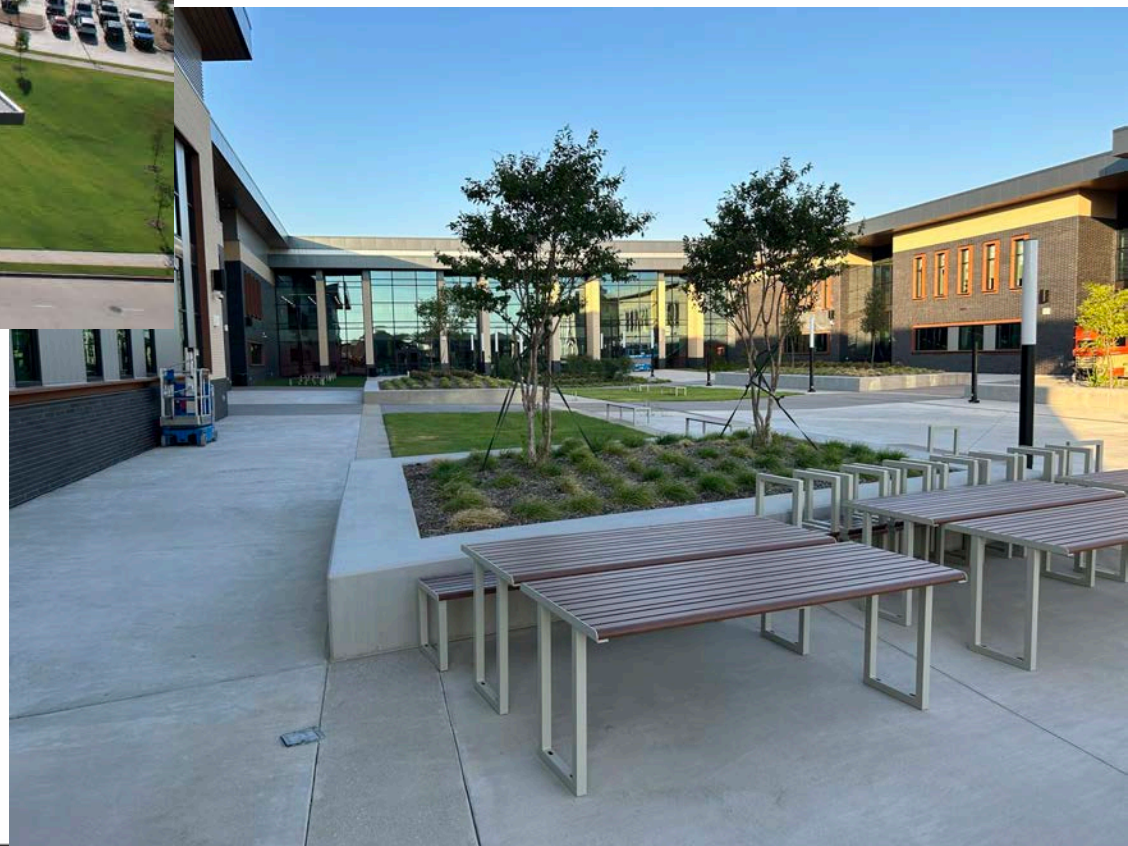
Construction Update:

- C.W. Worthington Middle School #7
- Carter Elementary School #21
- Daniel Elementary School #22
- Hatfield Replacement ES
- Seven Hills Replacement ES
- Northwest HS – Renovations & Additions
- Pike Replacement Middle School
- Pre-K Additions – various ES campuses
- Perrin Elementary School #23
- Former Hatfield ES Remodel to Temp Administration Building
- Legacy Learning Center – Parking Lot Expansion (no photos)
- NISD Distribution Center HVAC Renovation (no photos)

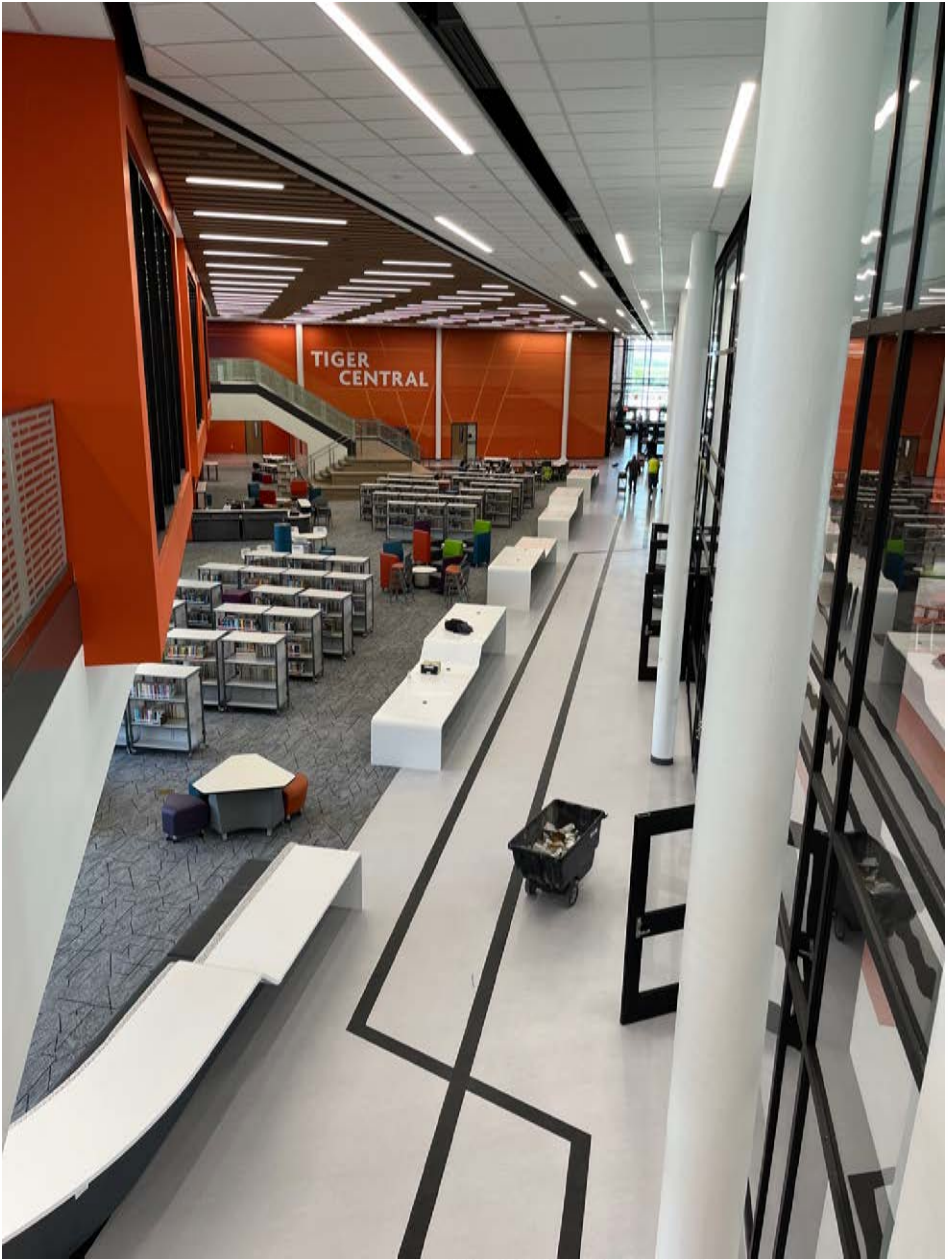
C.W. Worthington Middle School #7

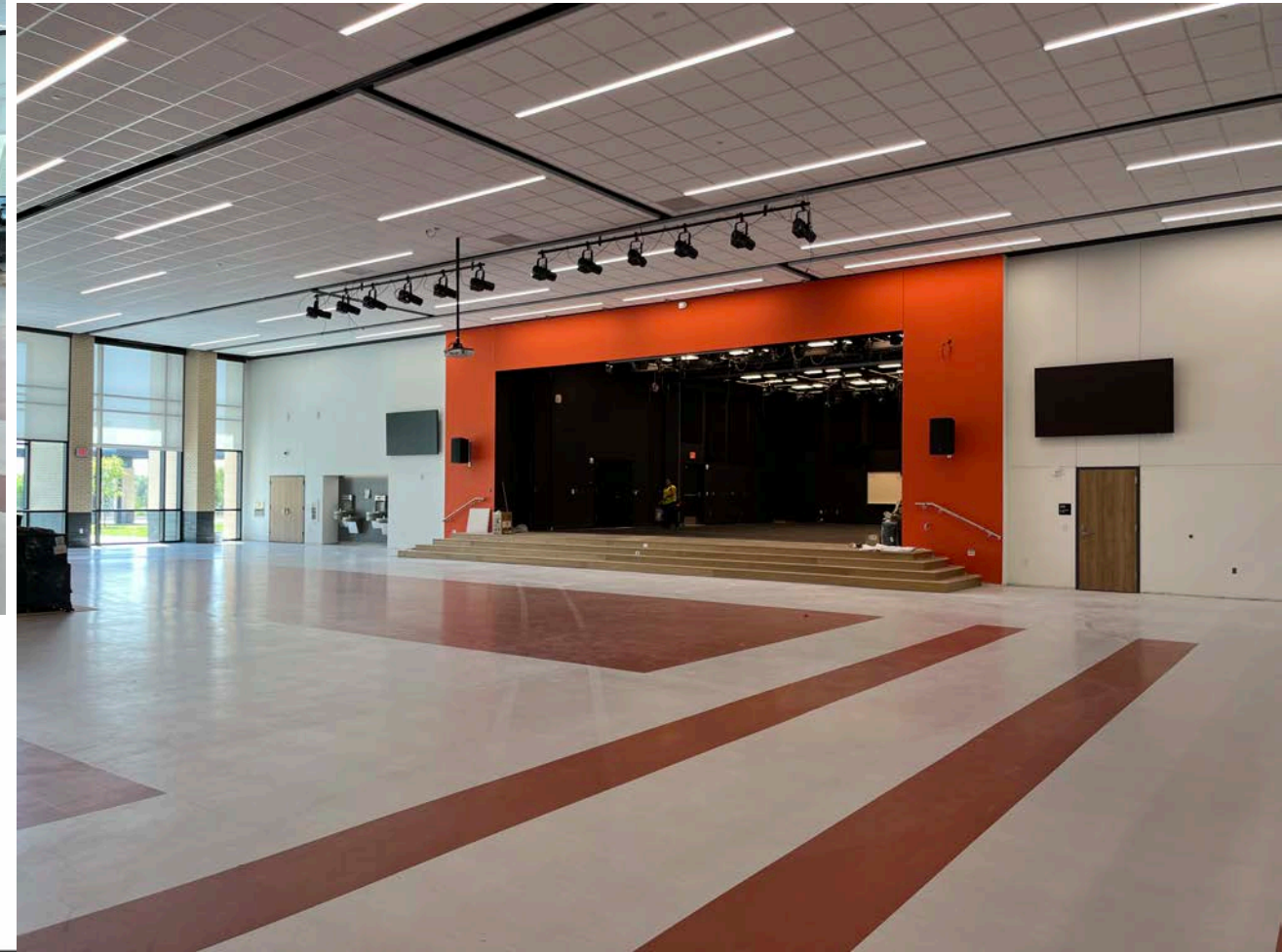


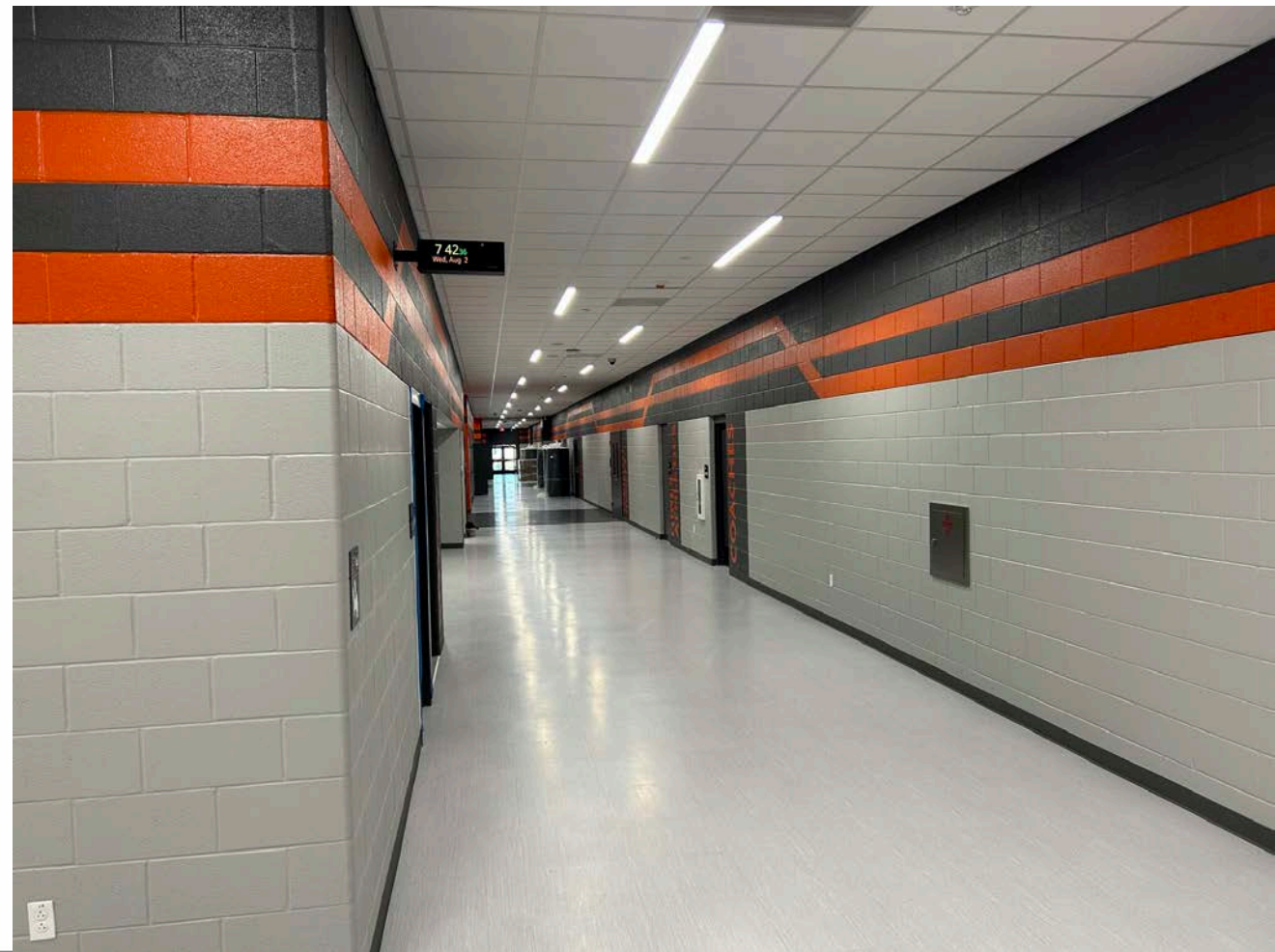


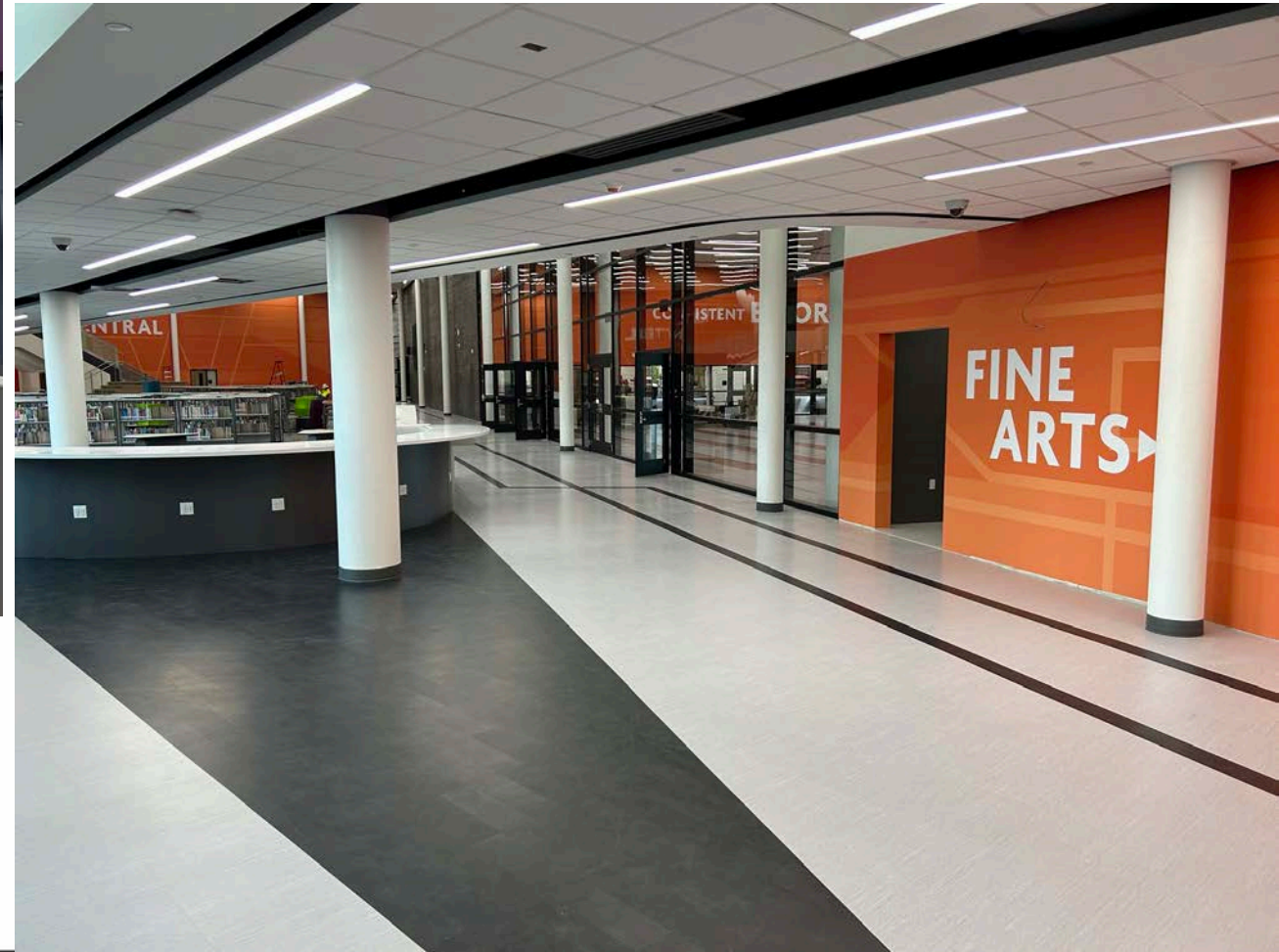












Carter Elementary School #21





Daniel Elementary School #22





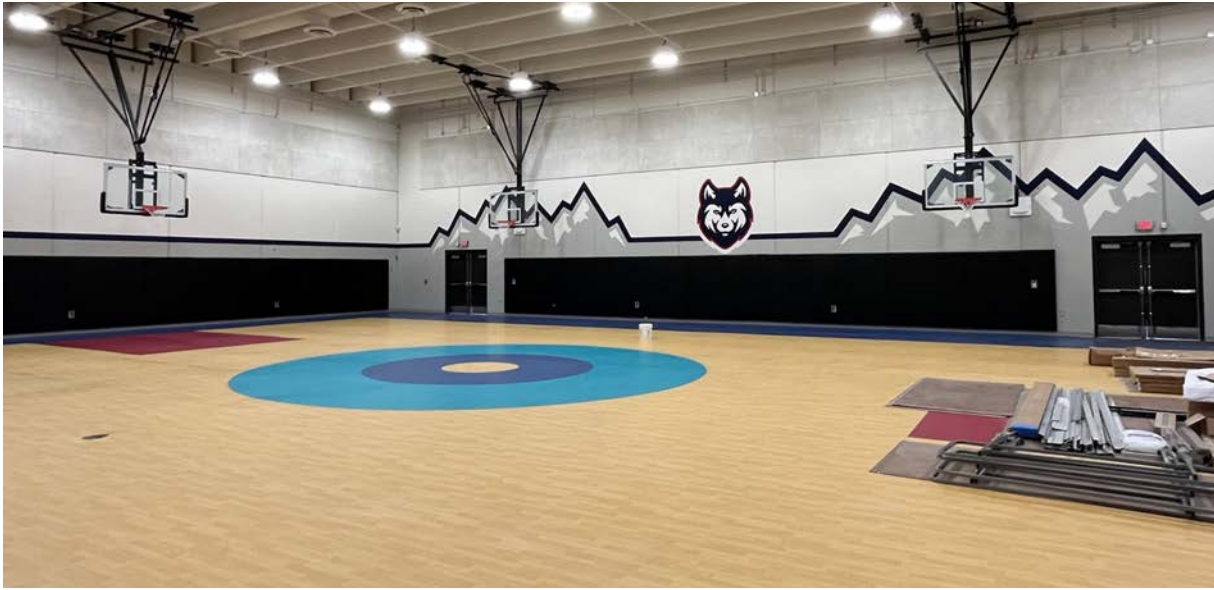
Hatfield Replacement ES





Seven Hills Replacement ES





Northwest HS – Renovations & Additions



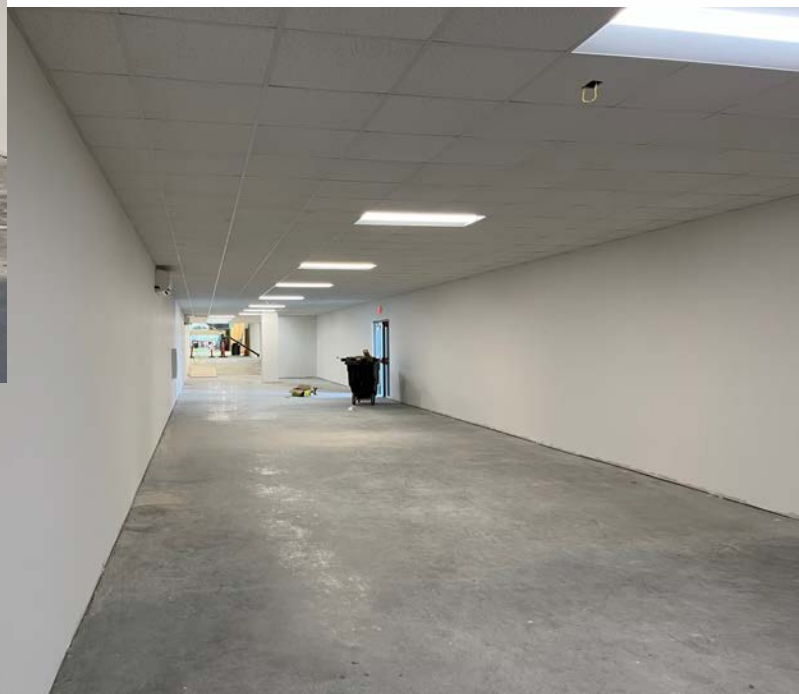
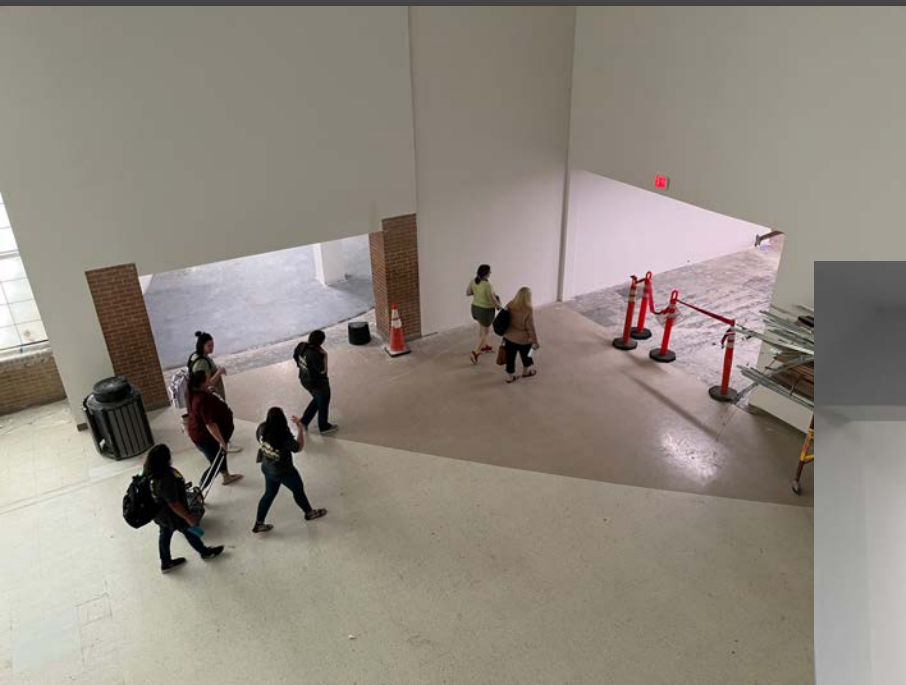


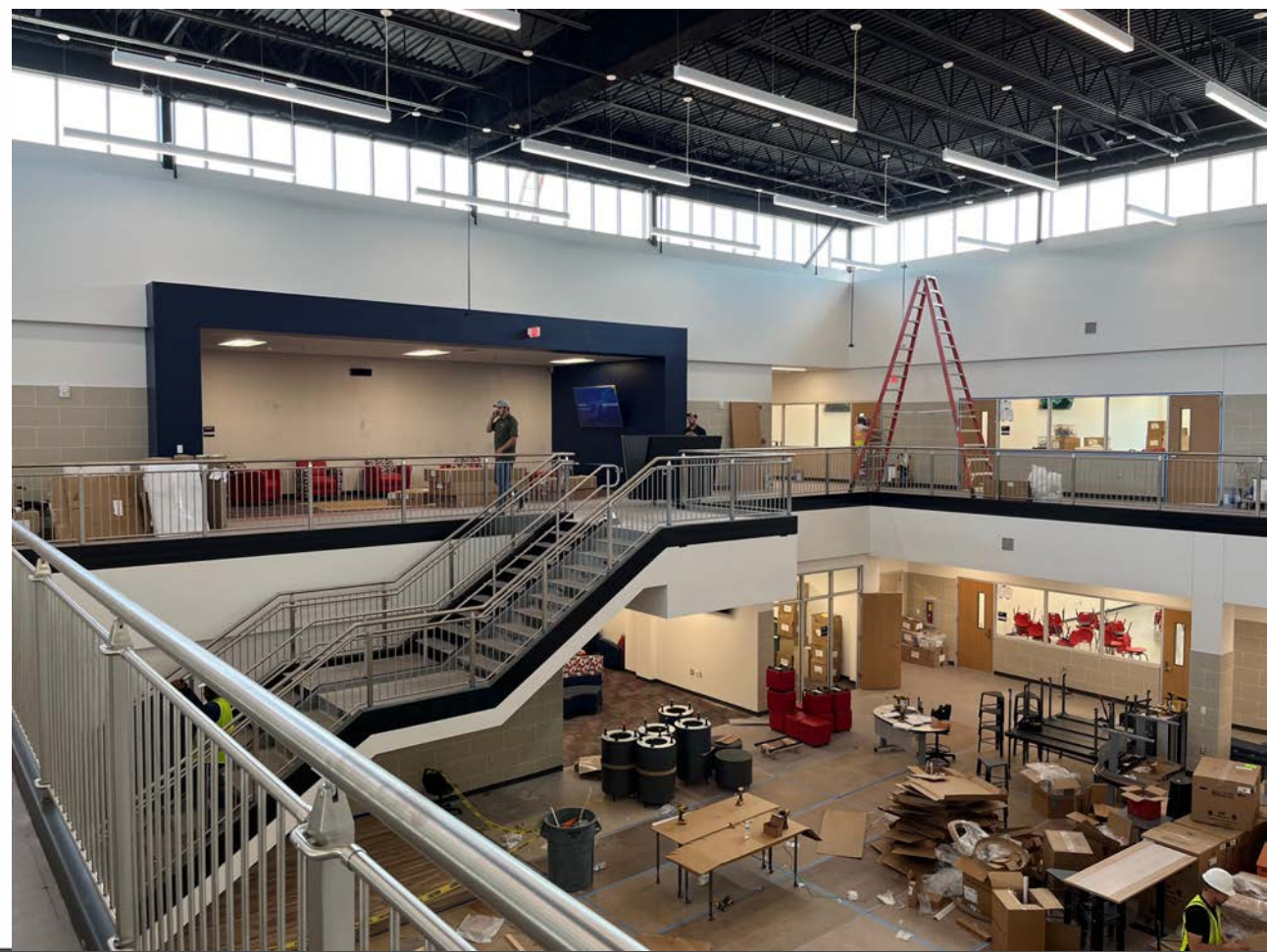












Pike Replacement Middle School





Pre-K Additions



Love ES

JC Thompson ES





Sendera Ranch ES

Hughes ES





Granger ES

Peterson ES



Schluter ES



Perrin Elementary School #23



Former Hatfield ES Renovation to Temp Administration Building





www.nisdtxconstruction.org

Questions?