

LEA Name : Governor Mifflin SD
Address : 10 South Waverly Street
Shillington , PA 19607

County : Berks
AUN Number : 114063003
LEA Type : SD

Annual Financial Report Accuracy Certification Statement

For Fiscal Year Ending
6/30/2023

Pennsylvania Department of Education

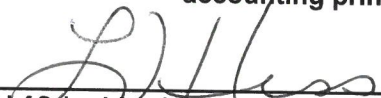
&

Office of Comptroller Operations

PDE-2056: Intermediate Unit

PDE-2057: School District, AVTS/CTC, Charter School,
and Special Program Jointure


CERTIFICATION: By signing this page I agree that the electronic data submitted is a complete and accurate statement of the financial operations and status of the local education agency for the fiscal year. It has been prepared in accordance with generally accepted accounting principles and established Commonwealth of PA reporting guidelines.



Chief School Administrator Signature

12/8/2023

Date



Board Secretary Signature

12/8/23

Date

Kelly Price

Contact Person

(610)775-1461 Ext :7012

Contact Person Telephone Number

kelly.price@gmsd.org

Contact Person E-mail Address

Contact Person Fax Number

Audit Certification
Annual Financial Report:
For Fiscal Year Ending **6/30/2023**
(Pursuant to PA School Code Section 218(b))

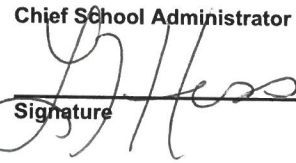
LEA Name : Governor Mifflin SD
AUN Number : 114063003
County : Berks

Audit Certification Due: 12/31/2023

This certification is applicable to the Annual Financial Report data submitted through the Consolidated Financial Reporting System (CFRS).

CERTIFICATION: By signing this page I agree that the financial statements of the school have been properly audited as noted above pursuant to Article XXIV, and in the auditor's professional opinion, the Annual Financial Report (PDE-2057) submitted through CFRS is materially consistent with the audited financial statements.

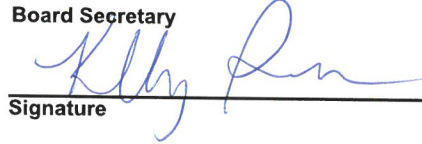
Chief School Administrator



Signature

12/8/2023
Date

Board Secretary



Signature

12/8/23
Date

Kelly Price

Contact Person

kelly.price@gmsd.org

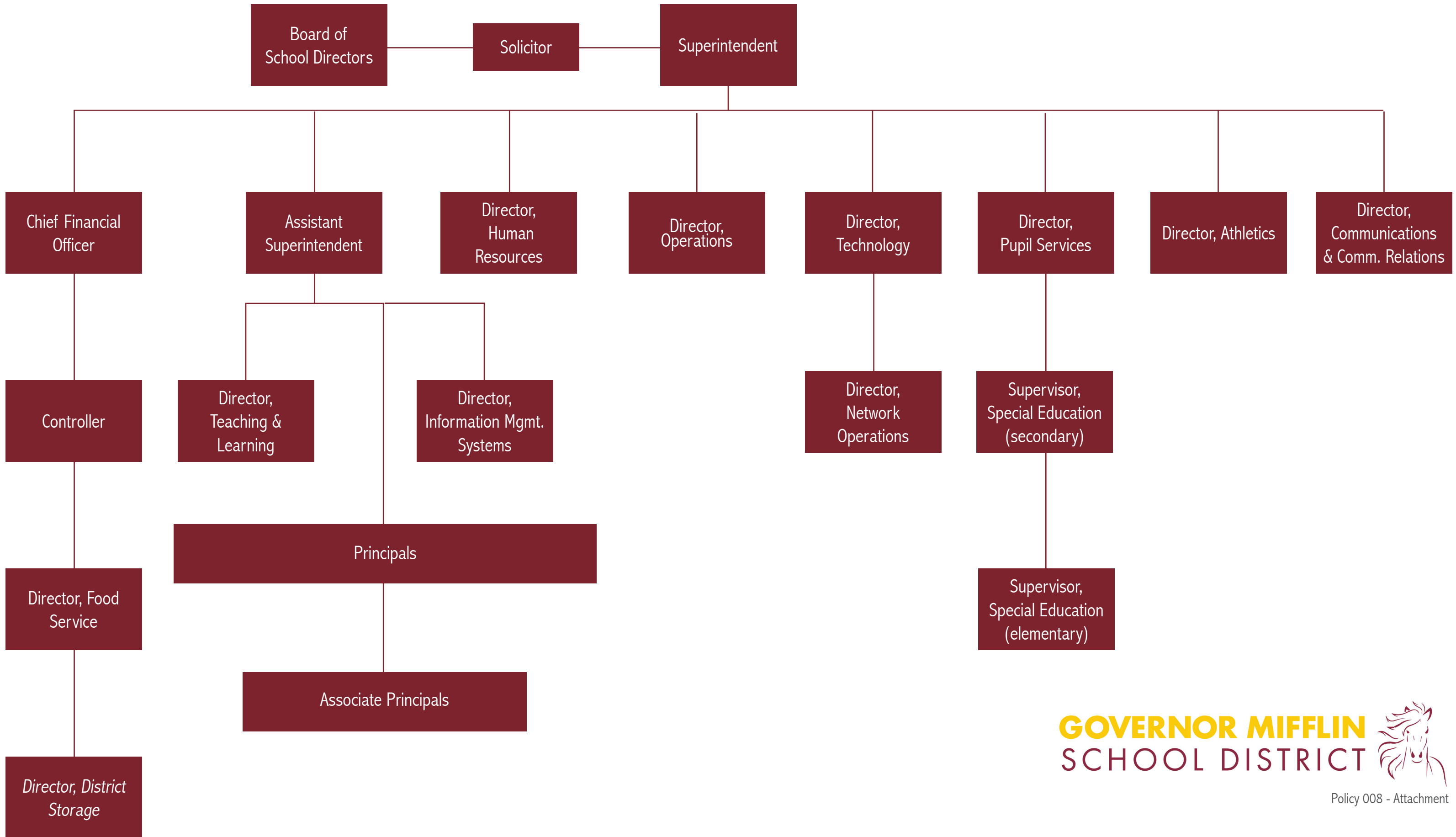
Contact Person E-mail Address

(610)775-1461

Ext :7012

Contact Person Telephone Number

Contact Person Fax Number



GOVERNOR MIFFLIN SCHOOL DISTRICT

SECTION: FINANCES

TITLE: GASB STATEMENT 34

ADOPTED: March 20, 2006

REVISED:

622. GASB STATEMENT 34	
<p>1. Purpose SC 613</p>	<p>The Board recognizes the need to implement the required accounting and financial reporting standards stipulated by the Pennsylvania Department of Education.</p> <p>The primary objectives of implementing the GASB Statement 34 are to assure compliance with state requirements, and properly account for both the financial and economic resources of the District.</p>
<p>2. Authority SC 218</p>	<p>Participation of the District in any such activity shall be in accordance with Board policy.</p>
<p>3. Delegation of Responsibility</p>	<p>The responsibility to coordinate the compilation and preparation of all information necessary to implement this policy is delegated to the Business Manager.</p> <p>The designated individual shall be responsible for implementing the necessary procedures to establish and maintain a fixed asset inventory, including depreciation schedules. Depreciation shall be computed on a straight-line basis over the useful lives of the assets, using an averaging convention. Normal maintenance and repairs shall be charged to expense as incurred; major renewals and betterments that materially extend the life or increase the value of the asset shall be capitalized. A schedule of accumulated depreciation shall be consistent from year to year. The basis for depreciation, including groups of assets and useful lives, shall be in writing and submitted for review to the Board.</p> <p>The Business Manager shall prepare the required Management Discussion and Analysis (MD&A). The MD&A shall be in the form required by GASB Statement 34 and shall be submitted to the Board for approval, prior to publication.</p> <p>Prior to submission of the MD&A for Board approval, the District's independent auditors shall review the MD&A, in accordance with SAS No. 52, "Required Supplementary Information".</p>

<p>4. Guidelines</p>	<p>In order to associate debt with acquired assets and to avoid net asset deficits, any asset that has been acquired with debt proceeds shall be capitalized, regardless of the cost of the asset. The asset life of these assets shall be considered relative to the time of the respective debt amortizations.</p> <p>For all other assets not acquired by debt proceeds, the dollar value of any single item for inclusion in the fixed assets accounts shall be not less than \$2,500.00.</p> <p>The capitalization threshold shall be set at a level that will capture at least eighty percent (80%) of all fixed assets.</p> <p>The assets listed below do not normally individually meet capitalization threshold criteria:</p> <ol style="list-style-type: none"> 1. Library books. 2. Classroom texts. 3. Computer equipment. 4. Classroom furniture. <p>These asset category costs shall be capitalized and depreciated as groups when that group's acquisition cost exceeds the capitalization threshold in any given fiscal year.</p> <p>For group asset depreciation purposes, the estimated useful life of the group may be based on the weighted average or simple average of the useful life of individual items, or on an assessment of the life of the group as a whole. Periodically, the District shall review the estimated life of groups of assets and adjust the remaining depreciation life of the group.</p> <p>Assets that fall below the capitalization threshold for GASB 34 reporting purposes may still be significant for insurance, warranty service, and obsolescence/ replacement policy tracking purposes. The District may record and maintain these non-GASB 34 asset inventories in subsidiary ledgers.</p>
<p>School Code 218, 613</p>	

<u>Val Number</u>	<u>Description</u>	<u>Justification</u>
13020	<p>REG: Interfund Trans-Out must equal REG Interfund Trans-In plus REP Interfund Trans In minus REP Interfund Trans-Out. (REG 5200 = REG 9300 + REP 9300 - REP 5200) Reference amts do not include any incoming transfers of the Fid. Funds. Include Fid. Fund incoming transfer info in the justification. Correct or enter a justification.</p> <p>Transfers Out (REG 5200): \$9,748,766.00 (REG 9300) + (REP 9300) - (REP 5200) : \$9,747,266.00</p>	\$1500 Transfer in to fund 81
42420	<p>Expenditure Detail: Total current year 2700-513 expenditure varies from prior year by 10%. Correct the data or enter a justification.</p> <p>2700-513, AFR Exp Detail: \$2,779,762.54 2700-513, PY AFR Amount: \$2,454,197.36</p>	Increase in base transportation contract and all other transportation costs, including other contractors & fuel.
50278	<p>SOIN: Current Year AFR amount must equal Prior Year AFR amount. Note: If the variance is due to a Subscription-Based IT Arrangement (SBITA) existing prior to GASB 96 implementation that is now being included on the SOIN as Leases & Other Right-to-Use Arrangements "Amount at FY Start", please note this within the justification.</p> <p>SOIN, Beg Bal, Govt Funds Leases & Other Right to Use Arrangements: \$1,134,825.00 PY Ending Bal, Govt Funds Leases & Other Right to Use Arrangements: \$829,786.00</p>	SBITAs in the amount of (\$305,039) now being included on SOIN as a Lease & Other Right-to-Use Arrangements in the amount at FY start
50380	<p>CESE: The amount reported on Line 1 of the CESE exceeds the Governmental Fund special education expenditures in Function 1200. Please correct or provide a justification.</p>	CESE Schedule is allocated based on direct Special Education Expenditures, plus an apportioned share for those expenditures that are not directly allocated to Special Education. This is consistent in how data was reported on prior year CESE schedules.
50430	<p>SESS - 2160 Social Work Services: SESS Schedule amounts for Special Education vary from prior year by 40% or more. Correct the data or enter a justification.</p> <p>SESS Schedule 2160: \$55,266.53 Prior Year SESS Schedule 2160: \$37,710.40</p>	District hired additional social workers to support all students mental health needs
50460	<p>SESS - 2420 Medical Services: SESS Schedule amounts for Special Education vary from prior year by 40% or more. Correct the data or enter a justification.</p> <p>SESS Schedule 2420: \$934.28 Prior Year SESS Schedule 2420: \$1,845.18</p>	In 2021-22, the District had a staff member assigned to medical tracing related to Covid 19. That was a temporary position no longer staffed in 2022-23.

Amounts Expressed in Whole Dollars	<u>General Fund</u> <u>(10)</u>	<u>Student Sponsored</u> <u>Activity Fund</u> <u>(21)</u>	<u>Public Purpose Trust</u> <u>(27)</u>	<u>Other Compt Approved</u> <u>(28)</u>	<u>Athletic / Activity</u> <u>(29)</u>
Assets And Deferred Outflows Of Resources					
Assets					
0100 Cash and Cash Equivalents	14,589,942				
0110 Investments					
0120 Taxes Receivable	1,938,207				
0130 Due From Other Funds	5,084				
0141 Due From Other Governments	320,280				
0142 State Revenue Receivable	2,625,412				
0143 Federal Revenue Receivable	1,197,823				
0145 Other Intergovernmental Revenue Receivable					
0146 Due from Primary Government					
0147 Due from Component Unit					
0150 Other Receivables	69,746				
0170 Inventories					
0180 Prepaid Expenses (Expenditures)	75,478				
0190 Other Current Assets					
Total Assets	\$20,821,972				
0910 Deferred Outflows of Resources					
Total Assets And Deferred Outflows Of Resources	\$20,821,972				

Amounts Expressed in Whole Dollars	<u>Capital Reserve (690.</u> <u>1850)</u> <u>(31)</u>	<u>Capital Reserve (1431)</u> <u>(32)</u>	<u>Other Capital Projects</u> <u>Fund</u> <u>(39)</u>	<u>Debt Service</u> <u>(40)</u>	<u>Permanent</u> <u>(90)</u>
Assets And Deferred Outflows Of Resources					
Assets					
0100 Cash and Cash Equivalents		9,882,107	27,978,439		
0110 Investments					
0120 Taxes Receivable					
0130 Due From Other Funds		2,384,390			
0141 Due From Other Governments					
0142 State Revenue Receivable					
0143 Federal Revenue Receivable					
0145 Other Intergovernmental Revenue Receivable					
0146 Due from Primary Government					
0147 Due from Component Unit					
0150 Other Receivables					
0170 Inventories					
0180 Prepaid Expenses (Expenditures)					
0190 Other Current Assets					
Total Assets		\$12,266,497	\$27,978,439		
0910 Deferred Outflows of Resources					
Total Assets And Deferred Outflows Of Resources		\$12,266,497	\$27,978,439		

Amounts Expressed in Whole Dollars

Total Governmental Funds

Assets And Deferred Outflows Of Resources

Assets	
0100 Cash and Cash Equivalents	52,450,488
0110 Investments	
0120 Taxes Receivable	1,938,207
0130 Due From Other Funds	2,389,474
0141 Due From Other Governments	320,280
0142 State Revenue Receivable	2,625,412
0143 Federal Revenue Receivable	1,197,823
0145 Other Intergovernmental Revenue Receivable	
0146 Due from Primary Government	
0147 Due from Component Unit	
0150 Other Receivables	69,746
0170 Inventories	
0180 Prepaid Expenses (Expenditures)	75,478
0190 Other Current Assets	
Total Assets	\$61,066,908
0910 Deferred Outflows of Resources	
Total Assets And Deferred Outflows Of Resources	\$61,066,908

Amounts Expressed in Whole Dollars	<u>General Fund</u> <u>(10)</u>	<u>Student Sponsored</u> <u>Activity Fund</u> <u>(21)</u>	<u>Public Purpose Trust</u> <u>(27)</u>	<u>Other Compt Approved</u> <u>(28)</u>	<u>Athletic / Activity</u> <u>(29)</u>
Liabilities And Deferred Inflows Of Resources And Fund Balances					
Liabilities					
0400 Due to Other Funds	2,420,843				
0411 Due to Other Governments	1,474				
0412 Due to Primary Government					
0413 Due to Component Unit					
0420 Accounts Payable	1,393,995				
0430 Contracts Payable					
0440 Current Portion of Long-Term Debt					
0450 Short-Term Payables					
0461 Accrued Salaries and Benefits	3,160,852				
0462 Payroll Deductions and Withholding	4,793,115				
0480 Unearned Revenues	51,646				
0490 Other Current Liabilities	4,782				
Total Liabilities	\$11,826,707				
0950 Deferred Inflows of Resources	1,365,571				
Fund Balances					
0810 Nonspendable Fund Balance	75,478				
0820 Restricted Fund Balance					
0830 Committed Fund Balance	1,250,000				
0840 Assigned Fund Balance	500,000				
0850 Unassigned Fund Balance	5,804,216				
Total Fund Balances	\$7,629,694				
Total Liabilities, Deferred Inflows Of Resources And Fund Balances	\$20,821,972				

Amounts Expressed in Whole Dollars	<u>Capital Reserve (690.</u> <u>1850)</u> <u>(31)</u>	<u>Capital Reserve (1431)</u> <u>(32)</u>	<u>Other Capital Projects</u> <u>Fund</u> <u>(39)</u>	<u>Debt Service</u> <u>(40)</u>	<u>Permanent</u> <u>(90)</u>
Liabilities And Deferred Inflows Of Resources And Fund Balances					
Liabilities					
0400 Due to Other Funds					
0411 Due to Other Governments					
0412 Due to Primary Government					
0413 Due to Component Unit					
0420 Accounts Payable		93,606	3,717,162		
0430 Contracts Payable					
0440 Current Portion of Long-Term Debt					
0450 Short-Term Payables					
0461 Accrued Salaries and Benefits					
0462 Payroll Deductions and Withholding					
0480 Unearned Revenues					
0490 Other Current Liabilities					
Total Liabilities		\$93,606	\$3,717,162		
0950 Deferred Inflows of Resources					
Fund Balances					
0810 Nonspendable Fund Balance					
0820 Restricted Fund Balance		12,172,891	24,261,277		
0830 Committed Fund Balance					
0840 Assigned Fund Balance					
0850 Unassigned Fund Balance					
Total Fund Balances		\$12,172,891	\$24,261,277		
Total Liabilities, Deferred Inflows Of Resources And Fund Balances		\$12,266,497	\$27,978,439		

Amounts Expressed in Whole Dollars

Total Governmental Funds

Liabilities And Deferred Inflows Of Resources And Fund Balances

Liabilities

0400 Due to Other Funds	2,420,843
0411 Due to Other Governments	1,474
0412 Due to Primary Government	
0413 Due to Component Unit	
0420 Accounts Payable	5,204,763
0430 Contracts Payable	
0440 Current Portion of Long-Term Debt	
0450 Short-Term Payables	
0461 Accrued Salaries and Benefits	3,160,852
0462 Payroll Deductions and Withholding	4,793,115
0480 Unearned Revenues	51,646
0490 Other Current Liabilities	4,782

Total Liabilities \$15,637,475

0950 Deferred Inflows of Resources	1,365,571
------------------------------------	-----------

Fund Balances

0810 Nonspendable Fund Balance	75,478
0820 Restricted Fund Balance	36,434,168
0830 Committed Fund Balance	1,250,000
0840 Assigned Fund Balance	500,000
0850 Unassigned Fund Balance	5,804,216

Total Fund Balances \$44,063,862

Total Liabilities, Deferred Inflows Of Resources And Fund Balances \$61,066,908

Amounts Expressed in Whole Dollars	<u>General Fund</u> <u>(10)</u>	<u>Student Sponsored</u> <u>Activity Fund</u> <u>(21)</u>	<u>Public Purpose Trust</u> <u>(27)</u>	<u>Other Compt Approved</u> <u>(28)</u>	<u>Athletic / Activity</u> <u>(29)</u>
Revenues					
6000 Revenue from Local Sources	54,630,253				
7000 Revenue from State Sources	22,306,715				
8000 Revenue from Federal Sources	5,608,835				
Total Revenues	\$82,545,803				
Expenditures					
1000 Instruction	46,259,970				
2000 Support Services	21,770,130				
3000 Operation of Non-Instructional Services	1,915,117				
4000 Facilities Acquisition, Construction and Improvement Services	2,922,165				
5110 Debt Service					
5130 Refund of Prior Year Revenues / Receipts	61,309				
5140 Leases and Other Right-to-Use Arrangements	733,594				
Total Expenditures	\$73,662,285				
Excess (Deficiency) Of Revenues Over Expenditures	\$8,883,518				
Other Financing Sources (Uses)					
9110 Face Value of Bonds Issued					
9120 Proceeds from Refunding of Bonds					
9130 Bond Premiums					
9200 Proceeds from Extended Term Financing, Leases, and Other Right-to-Use Arrangements	851,051				
9300 Interfund Transfers - IN	10,245				
9400 Sale of or Compensation for Loss of Fixed Assets	3,955				
9710 Transfers from Component Units					
9720 Transfers from Primary Governments					
9910 Other Financing Sources Not Listed in the 9000 Series					
9990 Insurance Recoveries					
5120 Debt Service – Refunded Bonds					
5150 Bond Discounts					
5200 Interfund Transfers – Out	9,748,766				
5300 Transfers Out to Component Units/Primary Governments					
Total Other Financing Sources (Uses)	(\$8,883,515)				

Amounts Expressed in Whole Dollars	<u>Capital Reserve (690.1850)</u> <u>(31)</u>	<u>Capital Reserve (1431)</u> <u>(32)</u>	<u>Other Capital Projects</u> <u>Fund</u> <u>(39)</u>	<u>Debt Service</u> <u>(40)</u>	<u>Permanent</u> <u>(90)</u>
Revenues					
6000 Revenue from Local Sources		208,373	824,824		
7000 Revenue from State Sources					
8000 Revenue from Federal Sources					
Total Revenues		\$208,373	\$824,824		
Expenditures					
1000 Instruction					
2000 Support Services		980,455	16,815		
3000 Operation of Non-Instructional Services		185,262	42,888		
4000 Facilities Acquisition, Construction and Improvement Services		166,099	19,500,272		
5110 Debt Service			979,225	6,628,213	
5130 Refund of Prior Year Revenues / Receipts					
5140 Leases and Other Right-to-Use Arrangements					
Total Expenditures		\$1,331,816	\$20,539,200	\$6,628,213	
Excess (Deficiency) Of Revenues Over Expenditures		(\$1,123,443)	(\$19,714,376)	(\$6,628,213)	
Other Financing Sources (Uses)					
9110 Face Value of Bonds Issued					
9120 Proceeds from Refunding of Bonds					
9130 Bond Premiums					
9200 Proceeds from Extended Term Financing, Leases, and Other Right-to-Use Arrangements					
9300 Interfund Transfers - IN		3,109,053	10,000	6,628,213	
9400 Sale of or Compensation for Loss of Fixed Assets					
9710 Transfers from Component Units					
9720 Transfers from Primary Governments					
9910 Other Financing Sources Not Listed in the 9000 Series					
9990 Insurance Recoveries					
5120 Debt Service – Refunded Bonds					
5150 Bond Discounts					
5200 Interfund Transfers – Out					
5300 Transfers Out to Component Units/Primary Governments					
Total Other Financing Sources (Uses)		\$3,109,053	\$10,000	\$6,628,213	

Amounts Expressed in Whole Dollars	<u>Total Governmental Funds</u>
Revenues	
6000 Revenue from Local Sources	55,663,450
7000 Revenue from State Sources	22,306,715
8000 Revenue from Federal Sources	5,608,835
Total Revenues	\$83,579,000
Expenditures	
1000 Instruction	46,259,970
2000 Support Services	22,767,400
3000 Operation of Non-Instructional Services	2,143,267
4000 Facilities Acquisition, Construction and Improvement Services	22,588,536
5110 Debt Service	7,607,438
5130 Refund of Prior Year Revenues / Receipts	61,309
5140 Leases and Other Right-to-Use Arrangements	733,594
Total Expenditures	\$102,161,514
Excess (Deficiency) Of Revenues Over Expenditures	(\$18,582,514)
Other Financing Sources (Uses)	
9110 Face Value of Bonds Issued	
9120 Proceeds from Refunding of Bonds	
9130 Bond Premiums	
9200 Proceeds from Extended Term Financing, Leases, and Other Right-to-Use Arrangements	851,051
9300 Interfund Transfers - IN	9,757,511
9400 Sale of or Compensation for Loss of Fixed Assets	3,955
9710 Transfers from Component Units	
9720 Transfers from Primary Governments	
9910 Other Financing Sources Not Listed in the 9000 Series	
9990 Insurance Recoveries	
5120 Debt Service – Refunded Bonds	
5150 Bond Discounts	
5200 Interfund Transfers – Out	9,748,766
5300 Transfers Out to Component Units/Primary Governments	
Total Other Financing Sources (Uses)	\$863,751

Amounts Expressed in Whole Dollars	<u>General Fund</u> <u>(10)</u>	<u>Student Sponsored</u> <u>Activity Fund</u> <u>(21)</u>	<u>Public Purpose Trust</u> <u>(27)</u>	<u>Other Compt Approved</u> <u>(28)</u>	<u>Athletic / Activity</u> <u>(29)</u>
Special And Extraordinary Items					
9920 Special Items – Gains					
9930 Extraordinary Items – Gains					
5520 Special Items – Losses					
5530 Extraordinary Items – Losses					
Net Change In Fund Balances	\$3				
Fund Balance					
0001 Fund Balance - Beginning of Fiscal Year	7,629,694				
Fund Balance - End Of Year	\$7,629,697				

Amounts Expressed in Whole Dollars	<u>Capital Reserve (690.</u> <u>1850)</u> <u>(31)</u>	<u>Capital Reserve (1431)</u> <u>(32)</u>	<u>Other Capital Projects</u> <u>Fund</u> <u>(39)</u>	<u>Debt Service</u> <u>(40)</u>	<u>Permanent</u> <u>(90)</u>
Special And Extraordinary Items					
9920 Special Items – Gains					
9930 Extraordinary Items – Gains					
5520 Special Items – Losses					
5530 Extraordinary Items – Losses					
Net Change In Fund Balances		\$1,985,610	(\$19,704,376)		
Fund Balance					
0001 Fund Balance - Beginning of Fiscal Year		10,187,280	43,965,652		
Fund Balance - End Of Year		\$12,172,890	\$24,261,276		

Amounts Expressed in Whole Dollars	<u>Total Governmental Funds</u>
Special And Extraordinary Items	
9920 Special Items – Gains	
9930 Extraordinary Items – Gains	
5520 Special Items – Losses	
5530 Extraordinary Items – Losses	
Net Change In Fund Balances	(\$17,718,763)
Fund Balance	
0001 Fund Balance - Beginning of Fiscal Year	61,782,626
Fund Balance - End Of Year	\$44,063,863

Amounts Expressed in Whole Dollars	<u>Food Service</u> <u>(51)</u>	<u>Child Care</u> <u>Operations</u> <u>(52)</u>	<u>Other Enterprise</u> <u>(58)</u>	<u>TOTAL</u>	<u>Internal Service</u> <u>(60)</u>
Assets And Deferred Outflows Of Resources					
Current Assets					
0100 Cash and Cash Equivalents	2,013,531			2,013,531	
0110 Investments					
0130 Due From Other Funds	31,369			31,369	
0141 Due From Other Governments					
0142 State Revenue Receivable					
0143 Federal Revenue Receivable	15,805			15,805	
0146 Due from Primary Government					
0147 Due from Component Unit					
0150 Other Receivables	1,946			1,946	
0170 Inventories	33,393			33,393	
0180 Prepaid Expenses (Expenditures)					
0190 Other Current Assets					
Total Current Assets	\$2,096,044			\$2,096,044	
Noncurrent Assets					
0211 Land					
0212 Site Improvements (Net)					
0220 Buildings and Building Improvements (Net)					
0230 Tangible Property and Intangible Right-To-Use Assets (Net)	213,671			213,671	
0250 Construction in Progress					
0260 Long Term Prepayments					
0290 Other Noncurrent Assets					
Total Noncurrent Assets	\$213,671			\$213,671	
0910 Deferred Outflows of Resources	370,012			370,012	
Total Assets And Deferred Outflows Of Resources	\$2,679,727			\$2,679,727	

Amounts Expressed in Whole Dollars	<u>Food Service</u> <u>(51)</u>	<u>Child Care</u> <u>Operations</u> <u>(52)</u>	<u>Other Enterprise</u> <u>(58)</u>	<u>TOTAL</u>	<u>Internal Service</u> <u>(60)</u>
Liabilities And Deferred Inflows Of Resources And Net Position					
Current Liabilities					
0400 Due to Other Funds					
0411 Due to Other Governments					
0413 Due to Component Unit					
0420 Accounts Payable	2,133			2,133	
0430 Contracts Payable					
0440 Current Portion of Long-Term Debt					
0450 Short-Term Payables					
0461 Accrued Salaries and Benefits	894			894	
0462 Payroll Deductions and Withholding	388			388	
0480 Unearned Revenues	9,762			9,762	
0490 Other Current Liabilities	11,319			11,319	
Total Current Liabilities	\$24,496			\$24,496	
Noncurrent Liabilities					
0510 Bonds Payable					
0520 Extended-Term Financing Agreements Payable					
0530 Lease and Other Right-To-Use Obligations					
0540 Accumulated Compensated Absences					
0550 Authority Lease Obligations					
0560 Other Post-Employment Benefits (OPEB)	193,613			193,613	
0570 Net Pension Liability	1,775,485			1,775,485	
0599 Other Noncurrent Liabilities					
Total Noncurrent Liabilities	\$1,969,098			\$1,969,098	
Total Liabilities	\$1,993,594			\$1,993,594	
0950 Deferred Inflows of Resources	401,635			401,635	
Net Position					
0791 Net Investment in Capital Assets					
0008 Restricted Net Position (0792 – 0798)					
0799 Unrestricted Net Position	284,498			284,498	
Total Net Position	\$284,498			\$284,498	
Total Liabilities And Deferred Inflows Of Resources And Net Position	\$2,679,727			\$2,679,727	

Amounts Expressed in Whole Dollars	<u>Food Service</u> <u>(51)</u>	<u>Child Care Operations</u> <u>(52)</u>	<u>Other Enterprise</u> <u>(58)</u>	<u>TOTAL</u>	<u>Internal Service</u> <u>(60)</u>
Operating Revenues					
6600 Food Service Revenue	787,639			787,639	
0071 Charges for Services					
0072 Other Operating Revenue					
Total Operating Revenues	\$787,639			\$787,639	
Operating Expenses					
100 Personnel Services – Salaries	678,845			678,845	
200 Personnel Services – Employee Benefits	160,946			160,946	
300 Purchased Professional and Technical Services	3,430			3,430	
400 Purchased Property Services	27,555			27,555	
500 Other Purchased Services	496			496	
600 Supplies	1,278,454			1,278,454	
740 Depreciation	26,316			26,316	
770 Amortization Expense					
810 Dues and Fees					
880 Refunds of Prior Years' Receipts					
890 Miscellaneous Expenditures	3,752			3,752	
Total Operating Expenses	\$2,179,794			\$2,179,794	
Operating Income (Loss)	(\$1,392,155)			(\$1,392,155)	
Non Operating Revenues (Expenses)					
6500 Earnings on Investments	34,622			34,622	
6830 Federal Revenue from Intermediary Sources					
6920 Contributions and Donations from Private Sources					
6930 Gains or Losses on Sale of Fixed Assets					
6991 Refunds of a Prior Year Expenditure					
7000 Revenue from State Sources	316,693			316,693	
8000 Revenue from Federal Sources	1,894,112			1,894,112	
9990 Insurance Recoveries					
820 Claims and Judgments Against the LEA					
830 Interest					
TOTAL Non Operating Revenues (Expenses)	\$2,245,427			\$2,245,427	
Income (Loss) Before Contributions And Transfers	\$853,272			\$853,272	

Amounts Expressed in Whole Dollars	<u>Food Service</u> <u>(51)</u>	<u>Child Care Operations</u> <u>(52)</u>	<u>Other Enterprise</u> <u>(58)</u>	<u>TOTAL</u>	<u>Internal Service</u> <u>(60)</u>
Contributions, Transfers, and Special and Extraordinary Items					
5200 Interfund Transfers – Out	10,245			10,245	
5300 Transfers Out to Component Units/Primary Governments					
5520 Special Items – Losses					
5530 Extraordinary Items – Losses					
9300 Interfund Transfers - IN					
9500 Capital Contributions					
9700 Transfers IN From Component Units/Primary Governments					
9920 Special Items – Gains					
9930 Extraordinary Items – Gains					
Change In Net Position	\$843,027			\$843,027	
0002 Net Position - Beginning of Fiscal Year	(558,529)			(558,529)	
0003 Accounting Changes / Residual Equity Transfers					
Net Position - End Of Year	\$284,498			\$284,498	

Amounts Expressed in Whole Dollars	<u>Food Service</u> <u>(51)</u>	<u>Child Care Operations</u> <u>(52)</u>	<u>Other Enterprise</u> <u>(58)</u>	<u>TOTAL</u>	<u>Internal Service(60)</u>
Cash Flows From Operating Activities					
0011 Cash Receipts From Users	758,408			758,408	
0012 Cash Receipts From Assessments Made to Other Funds					
0013 Cash Receipts From Earnings on Investments					
0014 Cash Receipts From Other Operating Revenue					
0015 Cash Payments To Employees For Services	1,092,569			1,092,569	
0016 Cash Payments For Insurance Claims					
0017 Cash Payments To Suppliers For Goods and Services	1,156,877			1,156,877	
0018 Cash Payments For Other Operating Expenses					
Net Cash Provided By (Used For) Operating Activities	(\$1,491,038)			(\$1,491,038)	
Cash Flows From Non-Capital Financing Activities					
0021 Receipts From Local Sources - 6000					
0022 Receipts From State Sources - 7000	324,884			324,884	
0023 Receipts From Federal Sources -8000	1,954,058			1,954,058	
0024 Notes and Loans Received (Repaid)					
0025 Interest Paid on Notes/Loans - 5100-830					
0026 Operating Transfers In (Out)/Residual Equity Trans	(10,245)			(10,245)	
0027 Operating Transfers In (Out) Primary Government / Comp Unit					
0028 Receipts From Refund of Prior Year Expenditures - 6991					
0029 Special and Extraordinary Gains (losses)					
0030 Receipts from Insurance Recoveries -9990					
Net Cash Prov By (Used for) Non-Capital Financing Activities	\$2,268,697			\$2,268,697	
Cash Flows From Capital and Related Financing Activities					
0031 Payments For Fac Acq, Const, and Imp - 4000	(26,848)			(26,848)	
0032 Gain / (Loss) on Sale of Fixed Assets - 6930					
0033 Proceeds From Extended Term Financing - 9200					
0034 Principal Paid on Financing Agreements					
0035 Interest Paid on Financing Agreements - 5100-830					
0036 (Inc) Dec in Contributed Capital					
Net Cash Prov By (Used for) Capital and Related Financing Activities	(\$26,848)			(\$26,848)	
Cash Flows From Investing Activities					
0041 Earnings on Investments - 6500	34,622			34,622	
0042 Purchase of Inv Securities / Deposits to Inv Pools					
0043 Receipts From Investment Pool Withdrawals					
0044 Proceeds from Sale and Maturity of Inv Securities					

LEA : 114063003 Governor Mifflin SD

Printed 12/13/2023 3:37:20 PM

0045 Loans Received (Paid)

Net Cash Prov By (Used for) Investing Activities	\$34,622	\$34,622
---	-----------------	-----------------

	<u>Food Service</u> <u>(51)</u>	<u>Child Care Operations</u> <u>(52)</u>	<u>Other Enterprise</u> <u>(58)</u>	<u>TOTAL</u>	<u>Internal Service</u> <u>(60)</u>
Net Increase (Decrease) in Cash Flows	785,433			785,433	
0004 Cash and Cash Equivalents Beginning of Year	1,228,098			1,228,098	
Cash and Cash Equivalents at Year End	\$2,013,531			\$2,013,531	
<hr/>					
Reconciliation of Operating Income (Loss) To Net Cash Provided by (Used For) Operating Activities					
0005 Operating Income (Loss) per REP	(1,392,155)			(1,392,155)	
Adjustments					
0051 Depreciation and Net Amortization	26,316			26,316	
0052 Provision for Uncollectible Accounts					
0053 Other Adjustments	202,055			202,055	
Effect of Changes in Assets, Liabilities, Deferred Outflows and Deferred Inflows					
0054 (Inc) Dec In Accounts Receivable (0120-0150)	(1,946)			(1,946)	
0055 Advances to Other Funds	(30,391)			(30,391)	
0056 (Inc) Dec in Inventories (0170)	16,599			16,599	
0057 (Inc) Dec in Prepaid Expenses (0180)					
0058 (Inc) Dec in Other Current or Noncurrent Assets					
0064 Deferred Outflows (0910)	(18,453)			(18,453)	
0059 Inc (Dec) in Accounts Payable (0400-0450)	(31,453)			(31,453)	
0060 Inc (Dec) in Accrued Salaries/Benefits (0461)	(1,944)			(1,944)	
0065 Inc (Dec) in Net Pension Liabilities (0570)	222,097			222,097	
0066 Inc (Dec) in Other Postemp Benefit Oblig (0560)	(75,879)			(75,879)	
0061 Inc (Dec) in Payroll Deductions/Withholding (0462)					
0062 Inc (Dec) in Unearned Revenue (0480)	(27,285)			(27,285)	
0063 Inc (Dec) in Other Current or Noncurrent Liabilities					
0067 Deferred Inflows (0950)	(378,599)			(378,599)	
Total Adjustments	(\$98,883)			(\$98,883)	
Cash Provided By (Used for) Total	(\$1,491,038)			(\$1,491,038)	

COMBINED STATEMENT OF CASH FLOWS
SCHEDULE OF NONCASH INVESTING, CAPITAL, AND FINANCING ACTIVITIES

Explanation of Transaction and Balance Sheet Effect	Amount
USDA Commodities	202,055
Total	\$202,055

LEA : 114063003 Governor Mifflin SD

Printed 12/13/2023 3:37:21 PM

Amounts Expressed in Whole Dollars

Private Purpose Trust
(71)

Investment Trust
(72)

Pension Trust
(73)

Student Activity Custodial
(81)

Assets And Deferred Outflows Of Resources

Assets

0100 Cash and Cash Equivalents	39,960			336,858
0110 Investments				
0130 Due From Other Funds				
0140 Due from Other Governments, Primary Government and Component Units				
0150 Other Receivables				
0170 Inventories				
0180 Prepaid Expenses (Expenditures)				
0190 Other Current Assets				
0220 Buildings and Building Improvements (Net)				
0230 Tangible Property and Intangible Right-To-Use Assets (Net)				
Total Assets	\$39,960			\$336,858
0910 Deferred Outflows of Resources				
Total Assets And Deferred Outflows Of Resources	\$39,960			\$336,858

LEA : 114063003 Governor Mifflin SD

Printed 12/13/2023 3:37:21 PM

Amounts Expressed in Whole Dollars

Other Custodial
(89)

Fiduciary Component Units
(98)

Total Fiduciary Funds

Assets And Deferred Outflows Of Resources

Assets

0100 Cash and Cash Equivalents			376,818
0110 Investments			
0130 Due From Other Funds			
0140 Due from Other Governments, Primary Government and Component Units			
0150 Other Receivables			
0170 Inventories			
0180 Prepaid Expenses (Expenditures)			
0190 Other Current Assets			
0220 Buildings and Building Improvements (Net)			
0230 Tangible Property and Intangible Right-To-Use Assets (Net)			

Total Assets **\$376,818**

0910 Deferred Outflows of Resources

Total Assets And Deferred Outflows Of Resources **\$376,818**

LEA : 114063003 Governor Mifflin SD

Printed 12/13/2023 3:37:21 PM

Amounts Expressed in Whole Dollars	<u>Private Purpose Trust</u> (71)	<u>Investment Trust</u> (72)	<u>Pension Trust</u> (73)	<u>Student Activity Custodial</u> (81)
Liabilities, Deferred Inflows Of Resources And Net Position				
Liabilities				
0400 Due to Other Funds				
0410 Due to Other Governments, Primary Government and Component Units				
0420 Accounts Payable				14,381
0430 Contracts Payable				
0450 Short-Term Payables				
0460 Payroll Accruals and Withholdings				
0480 Unearned Revenues				
0490 Other Current Liabilities				
Total Liabilities				\$14,381
0950 Deferred Inflows of Resources				
Net Position				
0791 Net Investment in Capital Assets				
0009 Restricted Net Position (0792 – 0798)				
0799 Unrestricted Net Position	39,960			322,477
Total Net Position	\$39,960			\$322,477
Total Liabilities, Deferred Inflows Of Resources And Net Position	\$39,960			\$336,858

LEA : 114063003 Governor Mifflin SD

Printed 12/13/2023 3:37:21 PM

Amounts Expressed in Whole Dollars	<u>Other Custodial</u> <u>(89)</u>	<u>Fiduciary Component Units</u> <u>(98)</u>	<u>Total Fiduciary Funds</u>
Liabilities, Deferred Inflows Of Resources And Net Position			
Liabilities			
0400 Due to Other Funds			
0410 Due to Other Governments, Primary Government and Component Units			
0420 Accounts Payable			14,381
0430 Contracts Payable			
0450 Short-Term Payables			
0460 Payroll Accruals and Withholdings			
0480 Unearned Revenues			
0490 Other Current Liabilities			
Total Liabilities			\$14,381
0950 Deferred Inflows of Resources			
Net Position			
0791 Net Investment in Capital Assets			
0009 Restricted Net Position (0792 – 0798)			
0799 Unrestricted Net Position			362,437
Total Net Position			\$362,437
Total Liabilities, Deferred Inflows Of Resources And Net Position			\$376,818

Amounts Expressed in Whole Dollars	<u>Private Purpose Trust</u> <u>(71)</u>	<u>Investment Trust</u> <u>(72)</u>	<u>Pension Trust</u> <u>(73)</u>	<u>Student Activity</u> <u>Custodial</u> <u>(81)</u>	<u>Other Custodial</u> <u>(89)</u>	<u>Fiduciary Component</u> <u>Units</u> <u>(98)</u>
Additions						
0091 Gifts and Contributions	1,103			525,064		
0095 Net Investment Earnings	1,292			884		
0092 Other Additions				1,500		
Deductions						
0093 Scholarships Awarded	3,525					
0094 Other Deductions				551,076		
Change In Net Position	(\$1,130)			(\$23,628)		
0006 Net Position – Beginning of Fiscal Year	41,090			346,105		
0007 Net Position Held in Trust for Pension Benefits						
Net Position - End of Fiscal Year	\$39,960			\$322,477		

Amounts Expressed in Whole Dollars	<u>Total Fiduciary Funds</u>
Additions	
0091 Gifts and Contributions	526,167
0095 Net Investment Earnings	2,176
0092 Other Additions	1,500
Deductions	
0093 Scholarships Awarded	3,525
0094 Other Deductions	551,076
Change in Net Position	(\$24,758)
0006 Net Position – Beginning of Fiscal Year	387,195
0007 Net Position Held in Trust for Pension Benefits	
Net Position - End of Fiscal Year	\$362,437

	<u>Revenue Reported In Current Year</u>	<u>Current Year Tax Accrual</u>	<u>Prior Year Tax Accrual</u>	<u>Taxes Collected In Current Year</u>
<u>Revenue from Local Sources</u>				
6111 Current Real Estate Taxes	44,772,754.06			44,772,754.06
6112 Interim Real Estate Taxes	224,568.42	5,423.04	3,562.36	222,707.74
6113 Public Utility Realty Taxes	48,918.38			48,918.38
6114 Payments in Lieu of Current Taxes - State / Local	1,489.41			1,489.41
6120 Current Per Capita Taxes, Section 679	86,671.90			86,671.90
6141 Current Act 511 Per Capita Taxes	86,721.90			86,721.90
6142 Current Act 511 Occupation Taxes - Flat Rate	63,460.31			63,460.31
6143 Current Act 511 Local Services Taxes	54,523.27	1,544.30	900.31	53,879.28
6151 Current Act 511 Earned Income Taxes	5,555,492.80	375,112.34	368,433.62	5,548,814.08
6153 Current Act 511 Real Estate Transfer Taxes	815,488.25	85,923.76	68,778.98	798,343.47
6411 Delinquent Real Estate Taxes	929,039.44	104,632.19	109,027.48	933,434.73
6420 Delinquent Per Capita Taxes, Section 679	28,402.00			28,402.00
6500 Earnings on Investments	731,461.14			
6700 Revenues from LEA Activities	139,480.61			
6810 Revenue from Local Governmental Units	30,000.00			
6832 Federal IDEA Revenue Received as Pass Through	765,083.23			
6910 Rentals	94,193.31			
6920 Contributions and Donations from Private Sources	6,707.75			
6942 Summer School Tuition	13,000.00			
6944 Receipts from Other LEAs in Pennsylvania - Education	147,629.54			
6991 Refunds of a Prior Year Expenditure	4,564.64			
6999 Other Revenues Not Specified Above	30,602.62			
TOTAL Revenue from Local Sources	\$54,630,252.98	\$572,635.63	\$550,702.75	\$52,645,597.26

**Revenue Reported
In Current Year**

Revenue from State Sources

7111 Basic Education Funding-Formula	7,737,038.00		
7112 Basic Education Funding-Social Security	1,154,562.34		
7160 Tuition for Orphans Subsidy	239,230.12		
7271 Special Education funds for School-Aged Pupils	2,947,834.58		
7292 Pre-K Counts	400,000.00		
7311 Pupil Transportation Subsidy	1,028,744.58		
7312 Nonpublic and Charter School Pupil Transportation Subsidy	57,365.00		
7320 Rental and Sinking Fund Payments / Building Reimbursement Subsidy	1,110,280.33		
7330 Health Services (Medical, Dental, Nurse, Act 25)	70,095.01		
7340 State Property Tax Reduction Allocation	1,085,258.92		
7361 School Safety and Security Grants	732.90		
7505 Ready to Learn Block Grant	686,905.00		
7820 State Share of Retirement Contributions	5,788,667.96		
TOTAL Revenue from State Sources	\$22,306,714.74		

**Revenue Reported
In Current Year**

Revenue from Federal Sources

8390 Other Restricted Federal Grants-in-Aid Directly from the Federal Government	285,701.04			
8514 Title I - Improving the Academic Achievement of the Disadvantaged	581,006.00			
8515 Title II - Preparing, Training, and Recruiting High Quality Teachers and Principals	100,988.04			
8516 Title III - Language Instruction for English Learners and Immigrant Students	26,116.00			
8517 Title IV - 21st Century Schools	46,622.36			
8741 Elementary and Secondary School Emergency Relief Fund (ESSER)	1,813.96			
8743 ESSER II - Elementary and Secondary School Emergency Relief Fund	1,131,920.34			
8744 ARP ESSER - Elementary and Secondary School Emergency Relief Fund	2,940,443.24			
8749 Other CARES Act Funding	2,699.28			
8751 ARP ESSER Learning Loss	216,424.00			
8752 ARP ESSER Summer Programs	45,939.00			
8753 ARP ESSER Afterschool Programs	16,955.36			
8755 ARP ESSER Emergency Relief for Other Educational Entities	2,973.00			
8810 School-Based Access Medicaid Reimbursement Program (SBAP) Reimbursements (Access)	200,000.00			
8820 Medical Assistance Reimbursement for Administrative Claiming (Quarterly) Program	9,233.33			
TOTAL Revenue from Federal Sources	\$5,608,834.95			

**Revenue Reported
In Current Year**

Other Financing Sources

9220 Leases and Other Right-to-Use Arrangements	851,050.76			
9350 Enterprise Fund Transfers	10,244.65			
9400 Sale of or Compensation for Loss of Fixed Assets	3,955.00			
TOTAL Other Financing Sources	\$865,250.41			
TOTAL FROM ALL SOURCES	\$83,411,053.08	\$572,635.63	\$550,702.75	\$52,645,597.26

	<u>General Fund (10)</u>	<u>Student Sponsored Activity Fund (21)</u>	<u>Public Purpose Trust (27)</u>	<u>Other Compt Approved (28)</u>	<u>Athletic / Activity (29)</u>	<u>Capital Reserve (690, 1850) (31)</u>
6000 Revenue from Local Sources						
6111 Current Real Estate Taxes	44,772,754.06					
6112 Interim Real Estate Taxes	224,568.42					
6113 Public Utility Realty Taxes	48,918.38					
6114 Payments in Lieu of Current Taxes - State / Local	1,489.41					
6120 Current Per Capita Taxes, Section 679	86,671.90					
6141 Current Act 511 Per Capita Taxes	86,721.90					
6142 Current Act 511 Occupation Taxes - Flat Rate	63,460.31					
6143 Current Act 511 Local Services Taxes	54,523.27					
6151 Current Act 511 Earned Income Taxes	5,555,492.80					
6153 Current Act 511 Real Estate Transfer Taxes	815,488.25					
6411 Delinquent Real Estate Taxes	929,039.44					
6420 Delinquent Per Capita Taxes, Section 679	28,402.00					
6500 Earnings on Investments	731,461.14					
6700 Revenues from LEA Activities	139,480.61					
6810 Revenue from Local Governmental Units	30,000.00					
6832 Federal IDEA Revenue Received as Pass Through	765,083.23					
6910 Rentals	94,193.31					
6920 Contributions and Donations from Private Sources	6,707.75					
6942 Summer School Tuition	13,000.00					
6944 Receipts from Other LEAs in Pennsylvania - Education	147,629.54					
6991 Refunds of a Prior Year Expenditure	4,564.64					
6999 Other Revenues Not Specified Above	30,602.62					
6000 Total Revenue from Local Sources	\$54,630,252.98					
7000 Revenue from State Sources						
7111 Basic Education Funding-Formula	7,737,038.00					
7112 Basic Education Funding-Social Security	1,154,562.34					
7160 Tuition for Orphans Subsidy	239,230.12					
7271 Special Education funds for School-Aged Pupils	2,947,834.58					
7292 Pre-K Counts	400,000.00					
7311 Pupil Transportation Subsidy	1,028,744.58					
7312 Nonpublic and Charter School Pupil Transportation Subsidy	57,365.00					
7320 Rental and Sinking Fund Payments / Building Reimbursement Subsidy	1,110,280.33					
7330 Health Services (Medical, Dental, Nurse, Act 25)	70,095.01					
7340 State Property Tax Reduction Allocation	1,085,258.92					
7361 School Safety and Security Grants	732.90					

LEA : 114063003 Governor Mifflin SD

Printed 12/13/2023 3:37:25 PM

	<u>Capital Reserve</u> <u>(1431) (32)</u>	<u>Other Capital</u> <u>Projects Fund (39)</u>	<u>Debt Service (40)</u>	<u>Permanent (90)</u>	<u>Total</u>
6000 Revenue from Local Sources					
6111 Current Real Estate Taxes					44,772,754.06
6112 Interim Real Estate Taxes					224,568.42
6113 Public Utility Realty Taxes					48,918.38
6114 Payments in Lieu of Current Taxes - State / Local					1,489.41
6120 Current Per Capita Taxes, Section 679					86,671.90
6141 Current Act 511 Per Capita Taxes					86,721.90
6142 Current Act 511 Occupation Taxes - Flat Rate					63,460.31
6143 Current Act 511 Local Services Taxes					54,523.27
6151 Current Act 511 Earned Income Taxes					5,555,492.80
6153 Current Act 511 Real Estate Transfer Taxes					815,488.25
6411 Delinquent Real Estate Taxes					929,039.44
6420 Delinquent Per Capita Taxes, Section 679					28,402.00
6500 Earnings on Investments	208,372.94	824,824.20			1,764,658.28
6700 Revenues from LEA Activities					139,480.61
6810 Revenue from Local Governmental Units					30,000.00
6832 Federal IDEA Revenue Received as Pass Through					765,083.23
6910 Rentals					94,193.31
6920 Contributions and Donations from Private Sources					6,707.75
6942 Summer School Tuition					13,000.00
6944 Receipts from Other LEAs in Pennsylvania - Education					147,629.54
6991 Refunds of a Prior Year Expenditure					4,564.64
6999 Other Revenues Not Specified Above					30,602.62
6000 Total Revenue from Local Sources	\$208,372.94	\$824,824.20			\$55,663,450.12
7000 Revenue from State Sources					
7111 Basic Education Funding-Formula					7,737,038.00
7112 Basic Education Funding-Social Security					1,154,562.34
7160 Tuition for Orphans Subsidy					239,230.12
7271 Special Education funds for School-Aged Pupils					2,947,834.58
7292 Pre-K Counts					400,000.00
7311 Pupil Transportation Subsidy					1,028,744.58
7312 Nonpublic and Charter School Pupil Transportation Subsidy					57,365.00
7320 Rental and Sinking Fund Payments / Building Reimbursement Subsidy					1,110,280.33
7330 Health Services (Medical, Dental, Nurse, Act 25)					70,095.01
7340 State Property Tax Reduction Allocation					1,085,258.92
7361 School Safety and Security Grants					732.90

	<u>General Fund (10)</u>	<u>Student Sponsored Activity Fund (21)</u>	<u>Public Purpose Trust (27)</u>	<u>Other Compt Approved (28)</u>	<u>Athletic / Activity (29)</u>	<u>Capital Reserve (690, 1850) (31)</u>
7000 Revenue from State Sources						
7505 Ready to Learn Block Grant	686,905.00					
7820 State Share of Retirement Contributions	5,788,667.96					
7000 Total Revenue from State Sources	\$22,306,714.74					
8000 Revenue from Federal Sources						
8390 Other Restricted Federal Grants-in-Aid Directly from the Federal Government	285,701.04					
8514 Title I - Improving the Academic Achievement of the Disadvantaged	581,006.00					
8515 Title II - Preparing, Training, and Recruiting High Quality Teachers and Principals	100,988.04					
8516 Title III - Language Instruction for English Learners and Immigrant Students	26,116.00					
8517 Title IV - 21st Century Schools	46,622.36					
8741 Elementary and Secondary School Emergency Relief Fund (ESSER)	1,813.96					
8743 ESSER II - Elementary and Secondary School Emergency Relief Fund	1,131,920.34					
8744 ARP ESSER - Elementary and Secondary School Emergency Relief Fund	2,940,443.24					
8749 Other CARES Act Funding	2,699.28					
8751 ARP ESSER Learning Loss	216,424.00					
8752 ARP ESSER Summer Programs	45,939.00					
8753 ARP ESSER Afterschool Programs	16,955.36					
8755 ARP ESSER Emergency Relief for Other Educational Entities	2,973.00					
8810 School-Based Access Medicaid Reimbursement Program (SBAP) Reimbursements (Access)	200,000.00					
8820 Medical Assistance Reimbursement for Administrative Claiming (Quarterly) Program	9,233.33					
8000 Total Revenue from Federal Sources	\$5,608,834.95					
9000 Other Financing Sources						
9220 Leases and Other Right-to-Use Arrangements	851,050.76					
9310 General Fund Transfers						
9350 Enterprise Fund Transfers	10,244.65					
9400 Sale of or Compensation for Loss of Fixed Assets	3,955.00					
9000 Total Other Financing Sources	\$865,250.41					
Total From All Sources	\$83,411,053.08					

	<u>Capital Reserve</u> <u>(1431) (32)</u>	<u>Other Capital</u> <u>Projects Fund (39)</u>	<u>Debt Service (40)</u>	<u>Permanent (90)</u>	<u>Total</u>
7000 Revenue from State Sources					
7505 Ready to Learn Block Grant					686,905.00
7820 State Share of Retirement Contributions					5,788,667.96
7000 Total Revenue from State Sources					\$22,306,714.74
8000 Revenue from Federal Sources					
8390 Other Restricted Federal Grants-in-Aid Directly from the Federal Government					285,701.04
8514 Title I - Improving the Academic Achievement of the Disadvantaged					581,006.00
8515 Title II - Preparing, Training, and Recruiting High Quality Teachers and Principals					100,988.04
8516 Title III - Language Instruction for English Learners and Immigrant Students					26,116.00
8517 Title IV - 21st Century Schools					46,622.36
8741 Elementary and Secondary School Emergency Relief Fund (ESSER)					1,813.96
8743 ESSER II - Elementary and Secondary School Emergency Relief Fund					1,131,920.34
8744 ARP ESSER - Elementary and Secondary School Emergency Relief Fund					2,940,443.24
8749 Other CARES Act Funding					2,699.28
8751 ARP ESSER Learning Loss					216,424.00
8752 ARP ESSER Summer Programs					45,939.00
8753 ARP ESSER Afterschool Programs					16,955.36
8755 ARP ESSER Emergency Relief for Other Educational Entities					2,973.00
8810 School-Based Access Medicaid Reimbursement Program (SBAP) Reimbursements (Access)					200,000.00
8820 Medical Assistance Reimbursement for Administrative Claiming (Quarterly) Program					9,233.33
8000 Total Revenue from Federal Sources					\$5,608,834.95
9000 Other Financing Sources					
9220 Leases and Other Right-to-Use Arrangements					851,050.76
9310 General Fund Transfers	3,109,053.43	10,000.00	6,628,213.00		9,747,266.43
9350 Enterprise Fund Transfers					10,244.65
9400 Sale of or Compensation for Loss of Fixed Assets					3,955.00
9000 Total Other Financing Sources	\$3,109,053.43	\$10,000.00	\$6,628,213.00		\$10,612,516.84
Total From All Sources	\$3,317,426.37	\$834,824.20	\$6,628,213.00		\$94,191,516.65

	<u>General Fund (10)</u>	<u>Student Sponsored Activity Fund (21)</u>	<u>Public Purpose Trust (27)</u>	<u>Other Compt Approved (28)</u>	<u>Athletic / Activity (29)</u>	<u>Capital Reserve (690. 1850) (31)</u>
Revenue from Local Sources	54,630,252.98					
Revenue from State Sources	22,306,714.74					
Revenue from Federal Sources	5,608,834.95					
Other Financing Sources	865,250.41					
Total From All Sources	\$83,411,053.08					

	<u>Capital Reserve (1431)</u> <u>(32)</u>	<u>Other Capital Projects</u> <u>Fund (39)</u>	<u>Debt Service (40)</u>	<u>Permanent (90)</u>	<u>Total</u>
Revenue from Local Sources	208,372.94	824,824.20			55,663,450.12
Revenue from State Sources					22,306,714.74
Revenue from Federal Sources					5,608,834.95
Other Financing Sources	3,109,053.43	10,000.00	6,628,213.00		10,612,516.84
Total From All Sources	\$3,317,426.37	\$834,824.20	\$6,628,213.00		\$94,191,516.65

General Fund (10)

	<u>Total</u>
1000 Instruction	
100 Personnel Services – Salaries	
100 Personnel Services – Salaries	22,624,008.35
Total Personnel Services – Salaries	\$22,624,008.35
200 Personnel Services – Employee Benefits	
210 Group Insurance – Contracted Provider	4,648,010.46
220 Social Security Contributions	1,675,378.02
230 PSERS Retirement Contributions	7,951,970.16
250 Unemployment Compensation	19,970.76
260 Workers' Compensation	112,905.46
Total Personnel Services – Employee Benefits	\$14,408,234.86
300 Purchased Professional and Technical Services	
322 Professional Educational Services – Ius	899,588.40
323 Professional Educational Services – Other Educational Agencies	293,272.68
329 Professional Educational Services – Other	742,147.12
330 Other Professional Services	3,363.02
Total Purchased Professional and Technical Services	\$1,938,371.22
400 Purchased Property Services	
410 Cleaning Services	498.40
430 Repairs and Maintenance Services	10,866.55
440 Rentals	13,288.93
Total Purchased Property Services	\$24,653.88
500 Other Purchased Services	
510 Student Transportation Services	62,397.14
520 Insurance – General	98.00
530 Communications	1,880.00
549 Other Advertising/Public Relations	1,263.85
561 Tuition To Other School Districts Within the State	81,727.34
562 Tuition To Pennsylvania Charter Schools	1,211,740.19
563 Tuition To Nonpublic Schools	3,238,190.72
564 Tuition To Career and Technology Centers	1,526,750.14
567 Tuition To Approved Private Schools (APS) and PA Chartered Schools for the Deaf and Blind	243,130.34
568 Tuition To Private Residential Rehabilitative Institutions (PRRI) [In-State] and Detention Centers	44,796.18
580 Travel	3,715.63
594 IU Payment By Withholding for Institutionalized Children's Programs – Special Classes	4,761.15
Total Other Purchased Services	\$6,420,450.68
600 Supplies	
610 General Supplies	474,453.81
630 Food	7,197.73
640 Books and Periodicals	270,139.43
650 Supplies & Fees – Technology Related	24,784.10
Total Supplies	\$776,575.07
700 Property	
752 Capital Equipment – Original and Additional	61,885.29

General Fund (10)

1000 Instruction		<u>Total</u>
Total Property		\$61,885.29
800 Other Objects		
810 Dues and Fees		5,791.00
Total Other Objects		\$5,791.00
Total 1000 Instruction		\$46,259,970.35

General Fund (10)

1100 Regular Programs – Elementary / Secondary

	<u>Elementary</u>	<u>Secondary</u>	<u>Federal</u>	<u>Total</u>
100 Personnel Services – Salaries				
100 Personnel Services – Salaries	8,595,698.39	7,951,765.89	856,008.45	17,403,472.73
Total Personnel Services – Salaries	\$8,595,698.39	\$7,951,765.89	\$856,008.45	\$17,403,472.73
200 Personnel Services – Employee Benefits				
210 Group Insurance – Contracted Provider	1,800,166.49	1,638,892.54	129,120.82	3,568,179.85
220 Social Security Contributions	643,097.52	588,285.18	66,282.40	1,297,665.10
230 PSERS Retirement Contributions	3,217,404.30	2,787,230.47	154,204.67	6,158,839.44
250 Unemployment Compensation	9,745.73	10,225.03		19,970.76
260 Workers' Compensation	43,021.57	39,731.42	4,144.14	86,897.13
Total Personnel Services – Employee Benefits	\$5,713,435.61	\$5,064,364.64	\$353,752.03	\$11,131,552.28
300 Purchased Professional and Technical Services				
323 Professional Educational Services – Other Educational Agencies	50,522.68	227,250.00	15,500.00	293,272.68
329 Professional Educational Services – Other	4,319.60	451.00		4,770.60
330 Other Professional Services	510.00	2,853.02		3,363.02
Total Purchased Professional and Technical Services	\$55,352.28	\$230,554.02	\$15,500.00	\$301,406.30
400 Purchased Property Services				
410 Cleaning Services		498.40		498.40
430 Repairs and Maintenance Services	1,534.00	6,507.55		8,041.55
440 Rentals		13,288.93		13,288.93
Total Purchased Property Services	\$1,534.00	\$20,294.88		\$21,828.88
500 Other Purchased Services				
510 Student Transportation Services	19,557.13	39,889.50		59,446.63
520 Insurance – General		98.00		98.00
530 Communications	40.00	1,840.00		1,880.00
562 Tuition To Pennsylvania Charter Schools	245,670.14	358,197.57		603,867.71
580 Travel	263.97	1,839.62		2,103.59
Total Other Purchased Services	\$265,531.24	\$401,864.69		\$667,395.93
600 Supplies				
610 General Supplies	140,491.04	239,530.15	28,410.46	408,431.65
640 Books and Periodicals	173,065.18	89,865.35	2,475.46	265,405.99
650 Supplies & Fees – Technology Related	24,784.10			24,784.10
Total Supplies	\$338,340.32	\$329,395.50	\$30,885.92	\$698,621.74
700 Property				
752 Capital Equipment – Original and Additional	24,116.00	35,284.39		59,400.39
Total Property	\$24,116.00	\$35,284.39		\$59,400.39
800 Other Objects				
810 Dues and Fees		5,666.00	125.00	5,791.00
Total Other Objects		\$5,666.00	\$125.00	\$5,791.00
Total 1100 Regular Programs – Elementary / Secondary	\$14,994,007.84	\$14,039,190.01	\$1,256,271.40	\$30,289,469.25

General Fund (10)

1110 Regular Programs

	<u>Elementary</u>	<u>Secondary</u>	<u>Federal</u>	<u>Total</u>
100 Personnel Services – Salaries				
100 Personnel Services – Salaries	8,595,698.39	7,951,765.89	856,008.45	17,403,472.73
Total Personnel Services – Salaries	\$8,595,698.39	\$7,951,765.89	\$856,008.45	\$17,403,472.73
200 Personnel Services – Employee Benefits				
210 Group Insurance – Contracted Provider	1,800,166.49	1,638,892.54	129,120.82	3,568,179.85
220 Social Security Contributions	643,097.52	588,285.18	66,282.40	1,297,665.10
230 PSERS Retirement Contributions	3,217,404.30	2,787,230.47	154,204.67	6,158,839.44
250 Unemployment Compensation	9,745.73	10,225.03		19,970.76
260 Workers' Compensation	43,021.57	39,731.42	4,144.14	86,897.13
Total Personnel Services – Employee Benefits	\$5,713,435.61	\$5,064,364.64	\$353,752.03	\$11,131,552.28
300 Purchased Professional and Technical Services				
323 Professional Educational Services – Other Educational Agencies	50,522.68	227,250.00	15,500.00	293,272.68
329 Professional Educational Services – Other	4,319.60	451.00		4,770.60
330 Other Professional Services	510.00	2,853.02		3,363.02
Total Purchased Professional and Technical Services	\$55,352.28	\$230,554.02	\$15,500.00	\$301,406.30
400 Purchased Property Services				
410 Cleaning Services		498.40		498.40
430 Repairs and Maintenance Services	1,534.00	6,507.55		8,041.55
440 Rentals		13,288.93		13,288.93
Total Purchased Property Services	\$1,534.00	\$20,294.88		\$21,828.88
500 Other Purchased Services				
510 Student Transportation Services	19,557.13	39,889.50		59,446.63
520 Insurance – General		98.00		98.00
530 Communications	40.00	1,840.00		1,880.00
562 Tuition To Pennsylvania Charter Schools	245,670.14	358,197.57		603,867.71
580 Travel	263.97	1,839.62		2,103.59
Total Other Purchased Services	\$265,531.24	\$401,864.69		\$667,395.93
600 Supplies				
610 General Supplies	140,491.04	239,530.15	28,410.46	408,431.65
640 Books and Periodicals	173,065.18	89,865.35	2,475.46	265,405.99
650 Supplies & Fees – Technology Related	24,784.10			24,784.10
Total Supplies	\$338,340.32	\$329,395.50	\$30,885.92	\$698,621.74
700 Property				
752 Capital Equipment – Original and Additional	24,116.00	35,284.39		59,400.39
Total Property	\$24,116.00	\$35,284.39		\$59,400.39
800 Other Objects				
810 Dues and Fees		5,666.00	125.00	5,791.00
Total Other Objects		\$5,666.00	\$125.00	\$5,791.00
Total 1110 Regular Programs	\$14,994,007.84	\$14,039,190.01	\$1,256,271.40	\$30,289,469.25

General Fund (10)

1200 Special Programs – Elementary / Secondary	<u>Elementary</u>	<u>Secondary</u>	<u>Federal</u>	<u>Total</u>
100 Personnel Services – Salaries				
100 Personnel Services – Salaries	2,061,813.09	1,944,796.91	702,681.56	4,709,291.56
Total Personnel Services – Salaries	\$2,061,813.09	\$1,944,796.91	\$702,681.56	\$4,709,291.56
200 Personnel Services – Employee Benefits				
210 Group Insurance – Contracted Provider	555,493.19	497,453.66	665.51	1,053,612.36
220 Social Security Contributions	153,368.50	143,304.32	51,639.46	348,312.28
230 PSERS Retirement Contributions	787,394.66	753,566.91	118,447.58	1,659,409.15
260 Workers' Compensation	10,303.89	9,592.34	3,560.16	23,456.39
Total Personnel Services – Employee Benefits	\$1,506,560.24	\$1,403,917.23	\$174,312.71	\$3,084,790.18
300 Purchased Professional and Technical Services				
322 Professional Educational Services – Ius	302,717.21	558,771.95		861,489.16
329 Professional Educational Services – Other	354,497.39	304,356.73		658,854.12
Total Purchased Professional and Technical Services	\$657,214.60	\$863,128.68		\$1,520,343.28
500 Other Purchased Services				
510 Student Transportation Services	1,678.82	751.69		2,430.51
561 Tuition To Other School Districts Within the State	12,816.48	57,610.00		70,426.48
562 Tuition To Pennsylvania Charter Schools	179,216.80	428,655.68		607,872.48
563 Tuition To Nonpublic Schools	1,085,384.84	2,106,282.20		3,191,667.04
564 Tuition To Career and Technology Centers		11,186.14		11,186.14
567 Tuition To Approved Private Schools (APS) and PA Chartered Schools for the Deaf and Blind	9,255.75	233,874.59		243,130.34
568 Tuition To Private Residential Rehabilitative Institutions (PRRI) [In-State] and Detention Centers	8,471.44	36,324.74		44,796.18
594 IU Payment By Withholding for Institutionalized Children's Programs – Special Classes		4,761.15		4,761.15
Total Other Purchased Services	\$1,296,824.13	\$2,879,446.19		\$4,176,270.32
600 Supplies				
610 General Supplies	31,777.16	(454.02)		31,323.14
640 Books and Periodicals	1,661.47	3,071.97		4,733.44
Total Supplies	\$33,438.63	\$2,617.95		\$36,056.58
700 Property				
752 Capital Equipment – Original and Additional	2,484.90			2,484.90
Total Property	\$2,484.90			\$2,484.90
Total 1200 Special Programs – Elementary / Secondary	\$5,558,335.59	\$7,093,906.96	\$876,994.27	\$13,529,236.82

General Fund (10)

1210 Life Skills Support

	<u>Elementary</u>	<u>Secondary</u>	<u>Federal</u>	<u>Total</u>
100 Personnel Services – Salaries				
100 Personnel Services – Salaries	210,795.14	418,412.56		629,207.70
Total Personnel Services – Salaries	\$210,795.14	\$418,412.56		\$629,207.70
200 Personnel Services – Employee Benefits				
210 Group Insurance – Contracted Provider	43,107.89	120,187.27		163,295.16
220 Social Security Contributions	15,979.28	31,162.67		47,141.95
230 PSERS Retirement Contributions	73,126.30	158,094.83		231,221.13
260 Workers' Compensation	1,060.14	2,086.00		3,146.14
Total Personnel Services – Employee Benefits	\$133,273.61	\$311,530.77		\$444,804.38
300 Purchased Professional and Technical Services				
322 Professional Educational Services – lus		58,052.34		58,052.34
Total Purchased Professional and Technical Services		\$58,052.34		\$58,052.34
500 Other Purchased Services				
510 Student Transportation Services	933.44	421.61		1,355.05
Total Other Purchased Services	\$933.44	\$421.61		\$1,355.05
600 Supplies				
610 General Supplies	4,862.07	(10,610.62)		(5,748.55)
640 Books and Periodicals		778.80		778.80
Total Supplies	\$4,862.07	(\$9,831.82)		(\$4,969.75)
Total 1210 Life Skills Support	\$349,864.26	\$778,585.46		\$1,128,449.72

General Fund (10)

1220 Sensory Support

	<u>Elementary</u>	<u>Secondary</u>	<u>Federal</u>	<u>Total</u>
100 Personnel Services – Salaries				
100 Personnel Services – Salaries	158,178.00	166,139.00	145,396.00	469,713.00
Total Personnel Services – Salaries	\$158,178.00	\$166,139.00	\$145,396.00	\$469,713.00
200 Personnel Services – Employee Benefits				
210 Group Insurance – Contracted Provider	57,485.26	11,043.57	96.90	68,625.73
220 Social Security Contributions	11,684.21	12,586.84	10,694.24	34,965.29
230 PSERS Retirement Contributions	81,205.90	58,580.52	25,633.25	165,419.67
260 Workers' Compensation	788.01	830.70	726.96	2,345.67
Total Personnel Services – Employee Benefits	\$151,163.38	\$83,041.63	\$37,151.35	\$271,356.36
300 Purchased Professional and Technical Services				
322 Professional Educational Services – Ius	127,838.67	248,826.74		376,665.41
329 Professional Educational Services – Other		412.16		412.16
Total Purchased Professional and Technical Services	\$127,838.67	\$249,238.90		\$377,077.57
500 Other Purchased Services				
562 Tuition To Pennsylvania Charter Schools	84,227.21	33,347.62		117,574.83
Total Other Purchased Services	\$84,227.21	\$33,347.62		\$117,574.83
600 Supplies				
610 General Supplies	9,535.19	4,758.46		14,293.65
640 Books and Periodicals	474.81			474.81
Total Supplies	\$10,010.00	\$4,758.46		\$14,768.46
Total 1220 Sensory Support	\$531,417.26	\$536,525.61	\$182,547.35	\$1,250,490.22

General Fund (10)

1230 Emotional Support

	<u>Elementary</u>	<u>Secondary</u>	<u>Federal</u>	<u>Total</u>
100 Personnel Services – Salaries				
100 Personnel Services – Salaries	599,002.54	315,940.86	86,272.00	1,001,215.40
Total Personnel Services – Salaries	\$599,002.54	\$315,940.86	\$86,272.00	\$1,001,215.40
200 Personnel Services – Employee Benefits				
210 Group Insurance – Contracted Provider	158,718.01	81,239.08	45.90	240,002.99
220 Social Security Contributions	44,164.77	23,539.16	6,511.50	74,215.43
230 PSERS Retirement Contributions	218,219.89	126,477.69	15,209.72	359,907.30
260 Workers' Compensation	3,002.17	1,577.74	431.34	5,011.25
Total Personnel Services – Employee Benefits	\$424,104.84	\$232,833.67	\$22,198.46	\$679,136.97
300 Purchased Professional and Technical Services				
322 Professional Educational Services – Ius	95,424.31	93,959.65		189,383.96
329 Professional Educational Services – Other	98,699.85	199,113.18		297,813.03
Total Purchased Professional and Technical Services	\$194,124.16	\$293,072.83		\$487,196.99
500 Other Purchased Services				
561 Tuition To Other School Districts Within the State	12,816.48	57,610.00		70,426.48
562 Tuition To Pennsylvania Charter Schools		88,886.64		88,886.64
563 Tuition To Nonpublic Schools	1,050,434.84	1,895,571.70		2,946,006.54
Total Other Purchased Services	\$1,063,251.32	\$2,042,068.34		\$3,105,319.66
600 Supplies				
610 General Supplies	7,152.98	3,067.86		10,220.84
Total Supplies	\$7,152.98	\$3,067.86		\$10,220.84
Total 1230 Emotional Support	\$2,287,635.84	\$2,886,983.56	\$108,470.46	\$5,283,089.86

General Fund (10)

1240 Academic Support

	<u>Elementary</u>	<u>Secondary</u>	<u>Federal</u>	<u>Total</u>
100 Personnel Services – Salaries				
100 Personnel Services – Salaries	997,671.76	989,904.04	308,567.60	2,296,143.40
Total Personnel Services – Salaries	\$997,671.76	\$989,904.04	\$308,567.60	\$2,296,143.40
200 Personnel Services – Employee Benefits				
210 Group Insurance – Contracted Provider	286,177.41	274,924.12	497.21	561,598.74
220 Social Security Contributions	74,367.78	71,955.08	22,032.45	168,355.31
230 PSERS Retirement Contributions	367,730.85	384,838.98	52,637.43	805,207.26
260 Workers' Compensation	4,996.79	4,834.82	1,592.95	11,424.56
Total Personnel Services – Employee Benefits	\$733,272.83	\$736,553.00	\$76,760.04	\$1,546,585.87
300 Purchased Professional and Technical Services				
322 Professional Educational Services – Ius	62,305.78	115,402.21		177,707.99
329 Professional Educational Services – Other	63,985.08			63,985.08
Total Purchased Professional and Technical Services	\$126,290.86	\$115,402.21		\$241,693.07
500 Other Purchased Services				
510 Student Transportation Services	745.38	330.08		1,075.46
562 Tuition To Pennsylvania Charter Schools	94,989.59	306,421.42		401,411.01
563 Tuition To Nonpublic Schools		48,749.00		48,749.00
Total Other Purchased Services	\$95,734.97	\$355,500.50		\$451,235.47
600 Supplies				
610 General Supplies	10,226.92	2,330.28		12,557.20
640 Books and Periodicals	1,186.66	2,293.17		3,479.83
Total Supplies	\$11,413.58	\$4,623.45		\$16,037.03
700 Property				
752 Capital Equipment – Original and Additional	2,484.90			2,484.90
Total Property	\$2,484.90			\$2,484.90
Total 1240 Academic Support	\$1,966,868.90	\$2,201,983.20	\$385,327.64	\$4,554,179.74

General Fund (10)

	<u>Elementary</u>	<u>Secondary</u>	<u>Federal</u>	<u>Total</u>
1241 Learning Support – Public				
100 Personnel Services – Salaries				
100 Personnel Services – Salaries	966,115.47	971,815.64	308,567.60	2,246,498.71
Total Personnel Services – Salaries	\$966,115.47	\$971,815.64	\$308,567.60	\$2,246,498.71
200 Personnel Services – Employee Benefits				
210 Group Insurance – Contracted Provider	277,390.65	272,533.56	497.21	550,421.42
220 Social Security Contributions	72,058.49	70,597.95	22,032.45	164,688.89
230 PSERS Retirement Contributions	356,603.96	378,461.19	52,637.43	787,702.58
260 Workers' Compensation	4,839.01	4,744.38	1,592.95	11,176.34
Total Personnel Services – Employee Benefits	\$710,892.11	\$726,337.08	\$76,760.04	\$1,513,989.23
300 Purchased Professional and Technical Services				
322 Professional Educational Services – Ius	62,305.78	115,402.21		177,707.99
329 Professional Educational Services – Other	63,985.08			63,985.08
Total Purchased Professional and Technical Services	\$126,290.86	\$115,402.21		\$241,693.07
500 Other Purchased Services				
562 Tuition To Pennsylvania Charter Schools	94,989.59	306,421.42		401,411.01
563 Tuition To Nonpublic Schools		48,749.00		48,749.00
Total Other Purchased Services	\$94,989.59	\$355,170.42		\$450,160.01
600 Supplies				
610 General Supplies	6,025.63	2,330.28		8,355.91
640 Books and Periodicals	718.32	2,293.17		3,011.49
Total Supplies	\$6,743.95	\$4,623.45		\$11,367.40
700 Property				
752 Capital Equipment – Original and Additional	2,484.90			2,484.90
Total Property	\$2,484.90			\$2,484.90
Total 1241 Learning Support – Public	\$1,907,516.88	\$2,173,348.80	\$385,327.64	\$4,466,193.32

General Fund (10)

1243 Gifted Support

	<u>Elementary</u>	<u>Secondary</u>	<u>Federal</u>	<u>Total</u>
100 Personnel Services – Salaries				
100 Personnel Services – Salaries	31,556.29	18,088.40		49,644.69
Total Personnel Services – Salaries	\$31,556.29	\$18,088.40		\$49,644.69
200 Personnel Services – Employee Benefits				
210 Group Insurance – Contracted Provider	8,786.76	2,390.56		11,177.32
220 Social Security Contributions	2,309.29	1,357.13		3,666.42
230 PSERS Retirement Contributions	11,126.89	6,377.79		17,504.68
260 Workers' Compensation	157.78	90.44		248.22
Total Personnel Services – Employee Benefits	\$22,380.72	\$10,215.92		\$32,596.64
500 Other Purchased Services				
510 Student Transportation Services	745.38	330.08		1,075.46
Total Other Purchased Services	\$745.38	\$330.08		\$1,075.46
600 Supplies				
610 General Supplies	4,201.29			4,201.29
640 Books and Periodicals	468.34			468.34
Total Supplies	\$4,669.63			\$4,669.63
Total 1243 Gifted Support	\$59,352.02	\$28,634.40		\$87,986.42

General Fund (10)

1260 Physical Support

300 Purchased Professional and Technical Services

	<u>Elementary</u>	<u>Secondary</u>	<u>Federal</u>	<u>Total</u>
322 Professional Educational Services – Ius	4,853.45	13,918.95		18,772.40
329 Professional Educational Services – Other	191,812.46	104,831.39		296,643.85
Total Purchased Professional and Technical Services	\$196,665.91	\$118,750.34		\$315,416.25
Total 1260 Physical Support	\$196,665.91	\$118,750.34		\$315,416.25

General Fund (10)

1270 Multi-Handicapped Support

100 Personnel Services – Salaries

100 Personnel Services – Salaries

Total Personnel Services – Salaries

200 Personnel Services – Employee Benefits

210 Group Insurance – Contracted Provider

220 Social Security Contributions

230 PSERS Retirement Contributions

260 Workers' Compensation

Total Personnel Services – Employee Benefits

300 Purchased Professional and Technical Services

322 Professional Educational Services – Ius

Total Purchased Professional and Technical Services

500 Other Purchased Services

563 Tuition To Nonpublic Schools

Total Other Purchased Services

Total 1270 Multi-Handicapped Support

	<u>Elementary</u>	<u>Secondary</u>	<u>Federal</u>	<u>Total</u>
			15,265.40	15,265.40
			\$15,265.40	\$15,265.40
		2,037.31	10.20	2,047.51
			1,142.05	1,142.05
		2,691.30	2,691.30	5,382.60
			76.35	76.35
		\$4,728.61	\$3,919.90	\$8,648.51
		28,612.06		28,612.06
		\$28,612.06		\$28,612.06
	34,950.00	161,961.50		196,911.50
	\$34,950.00	\$161,961.50		\$196,911.50
	\$34,950.00	\$195,302.17	\$19,185.30	\$249,437.47

General Fund (10)

1280 Early Intervention Support

300 Purchased Professional and Technical Services

322 Professional Educational Services – lus

Total Purchased Professional and Technical Services

Total 1280 Early Intervention Support

Elementary

Secondary

Federal

Total

12,295.00

12,295.00

\$12,295.00

\$12,295.00

\$12,295.00

\$12,295.00

General Fund (10)

1290 Special Programs - Other Support

	<u>Elementary</u>	<u>Secondary</u>	<u>Federal</u>	<u>Total</u>
100 Personnel Services – Salaries				
100 Personnel Services – Salaries	96,165.65	54,400.45	147,180.56	297,746.66
Total Personnel Services – Salaries	\$96,165.65	\$54,400.45	\$147,180.56	\$297,746.66
200 Personnel Services – Employee Benefits				
210 Group Insurance – Contracted Provider	10,004.62	8,022.31	15.30	18,042.23
220 Social Security Contributions	7,172.46	4,060.57	11,259.22	22,492.25
230 PSERS Retirement Contributions	47,111.72	22,883.59	22,275.88	92,271.19
260 Workers' Compensation	456.78	263.08	732.56	1,452.42
Total Personnel Services – Employee Benefits	\$64,745.58	\$35,229.55	\$34,282.96	\$134,258.09
500 Other Purchased Services				
564 Tuition To Career and Technology Centers		11,186.14		11,186.14
567 Tuition To Approved Private Schools (APS) and PA Chartered Schools for the Deaf and Blind	9,255.75	233,874.59		243,130.34
568 Tuition To Private Residential Rehabilitative Institutions (PRRI) [In-State] and Detention Centers	8,471.44	36,324.74		44,796.18
594 IU Payment By Withholding for Institutionalized Children's Programs – Special Classes		4,761.15		4,761.15
Total Other Purchased Services	\$17,727.19	\$286,146.62		\$303,873.81
Total 1290 Special Programs - Other Support	\$178,638.42	\$375,776.62	\$181,463.52	\$735,878.56

General Fund (10)

1300 Vocational Education

500 Other Purchased Services

564 Tuition To Career and Technology Centers

Total Other Purchased Services

Total 1300 Vocational Education

Elementary

Secondary

Federal

Total

1,515,564.00

1,515,564.00

\$1,515,564.00

\$1,515,564.00

\$1,515,564.00

\$1,515,564.00

General Fund (10)

	<u>Elementary</u>	<u>Secondary</u>	<u>Federal</u>	<u>Total</u>
1400 Other Instructional Programs – Elementary / Secondary				
100 Personnel Services – Salaries				
100 Personnel Services – Salaries		3,666.25	255,419.32	259,085.57
Total Personnel Services – Salaries		\$3,666.25	\$255,419.32	\$259,085.57
200 Personnel Services – Employee Benefits				
210 Group Insurance – Contracted Provider			5.10	5.10
220 Social Security Contributions		270.75	19,537.05	19,807.80
230 PSERS Retirement Contributions	22,192.53	23,086.92	43,986.64	89,266.09
260 Workers' Compensation		18.29	1,272.56	1,290.85
Total Personnel Services – Employee Benefits	\$22,192.53	\$23,375.96	\$64,801.35	\$110,369.84
300 Purchased Professional and Technical Services				
322 Professional Educational Services – Ius		15,796.87		15,796.87
329 Professional Educational Services – Other		64,579.00		64,579.00
Total Purchased Professional and Technical Services		\$80,375.87		\$80,375.87
500 Other Purchased Services				
561 Tuition To Other School Districts Within the State		11,300.86		11,300.86
563 Tuition To Nonpublic Schools	21,905.40	24,618.28		46,523.68
Total Other Purchased Services	\$21,905.40	\$35,919.14		\$57,824.54
Total 1400 Other Instructional Programs – Elementary / Secondary	\$44,097.93	\$143,337.22	\$320,220.67	\$507,655.82

General Fund (10)

1430 Homebound Instruction

100 Personnel Services – Salaries

100 Personnel Services – Salaries

Total Personnel Services – Salaries

200 Personnel Services – Employee Benefits

220 Social Security Contributions

230 PSERS Retirement Contributions

260 Workers' Compensation

Total Personnel Services – Employee Benefits

Total 1430 Homebound Instruction

Elementary

Secondary

Federal

Total

472.50

472.50

\$472.50

\$472.50

33.85

33.85

166.60

166.60

2.36

2.36

\$202.81

\$202.81

\$675.31

\$675.31

General Fund (10)

	<u>Elementary</u>	<u>Secondary</u>	<u>Federal</u>	<u>Total</u>
1440 Alternative Regular Education Programs				
300 <u>Purchased Professional and Technical Services</u>				
322 Professional Educational Services – lus		15,796.87		15,796.87
Total Purchased Professional and Technical Services		\$15,796.87		\$15,796.87
500 <u>Other Purchased Services</u>				
561 Tuition To Other School Districts Within the State		11,300.86		11,300.86
563 Tuition To Nonpublic Schools	21,905.40	24,618.28		46,523.68
Total Other Purchased Services	\$21,905.40	\$35,919.14		\$57,824.54
Total 1440 Alternative Regular Education Programs	\$21,905.40	\$51,716.01		\$73,621.41

General Fund (10)

1441 Adjudicated / Court-Placed Programs

Elementary

Secondary

Federal

Total

500 Other Purchased Services

561 Tuition To Other School Districts Within the State

11,300.86

11,300.86

Total Other Purchased Services

\$11,300.86

\$11,300.86

Total 1441 Adjudicated / Court-Placed Programs

\$11,300.86

\$11,300.86

General Fund (10)

	<u>Elementary</u>	<u>Secondary</u>	<u>Federal</u>	<u>Total</u>
1442 Alternative Education Programs				
300 <u>Purchased Professional and Technical Services</u>				
322 Professional Educational Services – lus		15,796.87		15,796.87
Total Purchased Professional and Technical Services		\$15,796.87		\$15,796.87
500 <u>Other Purchased Services</u>				
563 Tuition To Nonpublic Schools	21,905.40	24,618.28		46,523.68
Total Other Purchased Services	\$21,905.40	\$24,618.28		\$46,523.68
Total 1442 Alternative Education Programs	\$21,905.40	\$40,415.15		\$62,320.55

General Fund (10)

1450 Instructional Programs Outside the Established School Day	<u>Elementary</u>	<u>Secondary</u>	<u>Federal</u>	<u>Total</u>
100 Personnel Services – Salaries				
100 Personnel Services – Salaries		3,193.75		3,193.75
Total Personnel Services – Salaries		\$3,193.75		\$3,193.75
200 Personnel Services – Employee Benefits				
220 Social Security Contributions		236.90		236.90
230 PSERS Retirement Contributions		1,126.19		1,126.19
260 Workers' Compensation		15.93		15.93
Total Personnel Services – Employee Benefits		\$1,379.02		\$1,379.02
Total 1450 Instructional Programs Outside the Established School Day		\$4,572.77		\$4,572.77

General Fund (10)

	<u>Elementary</u>	<u>Secondary</u>	<u>Federal</u>	<u>Total</u>
1490 Additional Other Instructional Programs				
100 Personnel Services – Salaries				
100 Personnel Services – Salaries			255,419.32	255,419.32
Total Personnel Services – Salaries			\$255,419.32	\$255,419.32
200 Personnel Services – Employee Benefits				
210 Group Insurance – Contracted Provider			5.10	5.10
220 Social Security Contributions			19,537.05	19,537.05
230 PSERS Retirement Contributions	22,192.53	21,794.13	43,986.64	87,973.30
260 Workers' Compensation			1,272.56	1,272.56
Total Personnel Services – Employee Benefits	\$22,192.53	\$21,794.13	\$64,801.35	\$108,788.01
300 Purchased Professional and Technical Services				
329 Professional Educational Services – Other		64,579.00		64,579.00
Total Purchased Professional and Technical Services		\$64,579.00		\$64,579.00
Total 1490 Additional Other Instructional Programs	\$22,192.53	\$86,373.13	\$320,220.67	\$428,786.33

General Fund (10)

1500 Nonpublic School Programs

Elementary

Secondary

Federal

Total

300 Purchased Professional and Technical Services

322 Professional Educational Services – lus

22,302.37

22,302.37

Total Purchased Professional and Technical Services

\$22,302.37

\$22,302.37

600 Supplies

610 General Supplies

586.45

586.45

Total Supplies

\$586.45

\$586.45

Total 1500 Nonpublic School Programs

\$22,888.82

\$22,888.82

General Fund (10)

1800 Pre-Kindergarten

Elementary Secondary Federal Total

100	<u>Personnel Services – Salaries</u>			
	100 Personnel Services – Salaries			252,158.49
Total Personnel Services – Salaries				\$252,158.49
200	<u>Personnel Services – Employee Benefits</u>			
	210 Group Insurance – Contracted Provider			26,213.15
	220 Social Security Contributions			9,592.84
	230 PSERS Retirement Contributions			44,455.48
	260 Workers' Compensation			1,261.09
Total Personnel Services – Employee Benefits				\$81,522.56
300	<u>Purchased Professional and Technical Services</u>			
	329 Professional Educational Services – Other			13,943.40
Total Purchased Professional and Technical Services				\$13,943.40
400	<u>Purchased Property Services</u>			
	430 Repairs and Maintenance Services			2,825.00
Total Purchased Property Services				\$2,825.00
500	<u>Other Purchased Services</u>			
	510 Student Transportation Services			520.00
	549 Other Advertising/Public Relations			1,263.85
	580 Travel			1,612.04
Total Other Purchased Services				\$3,395.89
600	<u>Supplies</u>			
	610 General Supplies			34,112.57
	630 Food			7,197.73
Total Supplies				\$41,310.30
Total 1800 Pre-Kindergarten				\$395,155.64

General Fund (10)

1801 Pre-K Instruction

Elementary Secondary Federal Total

100	<u>Personnel Services – Salaries</u>				
	100 Personnel Services – Salaries				252,158.49
Total Personnel Services – Salaries					\$252,158.49
200	<u>Personnel Services – Employee Benefits</u>				
	210 Group Insurance – Contracted Provider				26,213.15
	220 Social Security Contributions				9,592.84
	230 PSERS Retirement Contributions				44,455.48
	260 Workers' Compensation				1,261.09
Total Personnel Services – Employee Benefits					\$81,522.56
300	<u>Purchased Professional and Technical Services</u>				
	329 Professional Educational Services – Other				13,943.40
Total Purchased Professional and Technical Services					\$13,943.40
400	<u>Purchased Property Services</u>				
	430 Repairs and Maintenance Services				2,825.00
Total Purchased Property Services					\$2,825.00
500	<u>Other Purchased Services</u>				
	510 Student Transportation Services				520.00
	549 Other Advertising/Public Relations				1,263.85
	580 Travel				1,612.04
Total Other Purchased Services					\$3,395.89
600	<u>Supplies</u>				
	610 General Supplies				34,112.57
Total Supplies					\$34,112.57
Total 1801 Pre-K Instruction					\$387,957.91

LEA : 114063003 Governor Mifflin SD

Printed 12/13/2023 3:37:29 PM

General Fund (10)

1805 Pre-K Food Services

Elementary

Secondary

Federal

Total

600 Supplies

630 Food

7,197.73

Total Supplies

\$7,197.73

Total 1805 Pre-K Food Services

\$7,197.73

General Fund (10)

2000 Support Services

Total

100 Personnel Services – Salaries

100 Personnel Services – Salaries 8,414,850.58

Total Personnel Services – Salaries \$8,414,850.58

200 Personnel Services – Employee Benefits

210 Group Insurance – Contracted Provider 1,667,833.58

220 Social Security Contributions 627,185.01

230 PSERS Retirement Contributions 2,903,550.29

240 Tuition Reimbursement 133,554.00

260 Workers' Compensation 41,695.85

291 Other Retirement Plans 18,348.71

Total Personnel Services – Employee Benefits \$5,392,167.44

300 Purchased Professional and Technical Services

310 Official / Administrative Services 284,794.27

322 Professional Educational Services – Ius 1,052.32

323 Professional Educational Services – Other Educational Agencies 58,875.00

329 Professional Educational Services – Other 570,921.10

330 Other Professional Services 130,012.26

340 Technical Services 56,043.08

350 Security / Safety Services 9,344.68

360 Employee Training and Development Services 74,354.61

Total Purchased Professional and Technical Services \$1,185,397.32

400 Purchased Property Services

410 Cleaning Services 41,982.77

420 Utility Services 126,223.07

430 Repairs and Maintenance Services 510,889.88

440 Rentals 97,523.65

460 Extermination Services 6,546.02

Total Purchased Property Services \$783,165.39

500 Other Purchased Services

513 Contracted Carriers 2,779,762.54

516 Student Transportation Services From the IU 136,270.95

520 Insurance – General 81,600.75

523 General Property and Liability Insurance 202,210.80

530 Communications 132,648.81

549 Other Advertising/Public Relations 10,469.19

550 Printing and Binding 442.22

580 Travel 41,965.59

595 IU Payments By Withholding 52,733.39

Total Other Purchased Services \$3,438,104.24

600 Supplies

610 General Supplies 628,586.78

620 Energy 577,255.68

630 Food 31,899.10

640 Books and Periodicals 79,601.40

General Fund (10)

2000 Support Services

Total

600 <u>Supplies</u>		
650 Supplies & Fees – Technology Related		195,515.31
Total Supplies		\$1,512,858.27
700 <u>Property</u>		
736 Technology Equipment Lease		789,169.72
739 Leases - Other		61,881.04
752 Capital Equipment – Original and Additional		121,049.79
Total Property		\$972,100.55
800 <u>Other Objects</u>		
810 Dues and Fees		70,955.84
890 Miscellaneous Expenditures		530.50
Total Other Objects		\$71,486.34
Total 2000 Support Services		\$21,770,130.13

General Fund (10)

2100 Support Services – Students

	<u>Elementary</u>	<u>Secondary</u>	<u>Federal</u>	<u>Total</u>
100 Personnel Services – Salaries				
100 Personnel Services – Salaries	760,278.96	858,583.60	131,574.22	1,751,156.70
Total Personnel Services – Salaries	\$760,278.96	\$858,583.60	\$131,574.22	\$1,751,156.70
200 Personnel Services – Employee Benefits				
210 Group Insurance – Contracted Provider	112,568.51	154,561.20	29,334.25	296,463.96
220 Social Security Contributions	56,285.36	63,839.32	9,362.97	129,540.11
230 PSERS Retirement Contributions	267,887.18	298,804.78	23,196.51	613,127.37
260 Workers' Compensation	3,785.71	4,272.53	660.26	8,719.10
Total Personnel Services – Employee Benefits	\$440,526.76	\$521,477.83	\$62,553.99	\$1,047,850.54
300 Purchased Professional and Technical Services				
323 Professional Educational Services – Other Educational Agencies			1,875.00	58,875.00
329 Professional Educational Services – Other	9,008.50	18,133.75		27,142.25
Total Purchased Professional and Technical Services	\$9,008.50	\$18,133.75	\$1,875.00	\$86,017.25
500 Other Purchased Services				
580 Travel	484.53	491.68		1,301.21
Total Other Purchased Services	\$484.53	\$491.68		\$1,301.21
600 Supplies				
610 General Supplies	1,992.73	19,323.47		22,049.10
630 Food	255.11	320.38		575.49
650 Supplies & Fees – Technology Related				19,740.35
Total Supplies	\$2,247.84	\$19,643.85		\$42,364.94
800 Other Objects				
810 Dues and Fees	616.12	643.26		1,259.38
Total Other Objects	\$616.12	\$643.26		\$1,259.38
Total 2100 Support Services – Students	\$1,213,162.71	\$1,418,973.97	\$196,003.21	\$2,929,950.02

General Fund (10)

	<u>Elementary</u>	<u>Secondary</u>	<u>Federal</u>	<u>Total</u>
2110 Supervision of Student Services				
100 Personnel Services – Salaries				
100 Personnel Services – Salaries	88,673.24	88,672.98		177,346.22
Total Personnel Services – Salaries	\$88,673.24	\$88,672.98		\$177,346.22
200 Personnel Services – Employee Benefits				
210 Group Insurance – Contracted Provider	6,062.58	6,062.43		12,125.01
220 Social Security Contributions	6,429.70	6,429.48		12,859.18
230 PSERS Retirement Contributions	30,082.82	30,082.60		60,165.42
260 Workers' Compensation	426.67	426.40		853.07
Total Personnel Services – Employee Benefits	\$43,001.77	\$43,000.91		\$86,002.68
500 Other Purchased Services				
580 Travel	305.84	305.84		611.68
Total Other Purchased Services	\$305.84	\$305.84		\$611.68
600 Supplies				
610 General Supplies	396.31	441.81		838.12
630 Food	255.11	320.38		575.49
Total Supplies	\$651.42	\$762.19		\$1,413.61
800 Other Objects				
810 Dues and Fees	616.12	643.26		1,259.38
Total Other Objects	\$616.12	\$643.26		\$1,259.38
Total 2110 Supervision of Student Services	\$133,248.39	\$133,385.18		\$266,633.57

General Fund (10)

2111 Supervision of Student Services – Head of Component

	<u>Elementary</u>	<u>Secondary</u>	<u>Federal</u>	<u>Total</u>
100 Personnel Services – Salaries				
100 Personnel Services – Salaries	88,673.24	88,672.98		177,346.22
Total Personnel Services – Salaries	\$88,673.24	\$88,672.98		\$177,346.22
200 Personnel Services – Employee Benefits				
210 Group Insurance – Contracted Provider	6,062.58	6,062.43		12,125.01
220 Social Security Contributions	6,429.70	6,429.48		12,859.18
230 PSERS Retirement Contributions	30,082.82	30,082.60		60,165.42
260 Workers' Compensation	426.67	426.40		853.07
Total Personnel Services – Employee Benefits	\$43,001.77	\$43,000.91		\$86,002.68
500 Other Purchased Services				
580 Travel	305.84	305.84		611.68
Total Other Purchased Services	\$305.84	\$305.84		\$611.68
600 Supplies				
610 General Supplies	396.31	441.81		838.12
630 Food	255.11	320.38		575.49
Total Supplies	\$651.42	\$762.19		\$1,413.61
800 Other Objects				
810 Dues and Fees	616.12	643.26		1,259.38
Total Other Objects	\$616.12	\$643.26		\$1,259.38
Total 2111 Supervision of Student Services – Head of Component	\$133,248.39	\$133,385.18		\$266,633.57

General Fund (10)

2120 Guidance Services

100 Personnel Services – Salaries

	<u>Elementary</u>	<u>Secondary</u>	<u>Federal</u>	<u>Total</u>
100 Personnel Services – Salaries	395,885.78	652,609.43		1,048,495.21
Total Personnel Services – Salaries	\$395,885.78	\$652,609.43		\$1,048,495.21

200 Personnel Services – Employee Benefits

210 Group Insurance – Contracted Provider	63,379.66	124,256.89		187,636.55
220 Social Security Contributions	29,477.00	48,790.06		78,267.06
230 PSERS Retirement Contributions	140,585.59	227,433.21		368,018.80
260 Workers' Compensation	1,978.33	3,260.48		5,238.81
Total Personnel Services – Employee Benefits	\$235,420.58	\$403,740.64		\$639,161.22

600 Supplies

610 General Supplies	883.62	11,310.58		12,194.20
Total Supplies	\$883.62	\$11,310.58		\$12,194.20
Total 2120 Guidance Services	\$632,189.98	\$1,067,660.65		\$1,699,850.63

General Fund (10)

2140 Psychological Services

	<u>Elementary</u>	<u>Secondary</u>	<u>Federal</u>	<u>Total</u>
100 Personnel Services – Salaries				
100 Personnel Services – Salaries	272,679.05	112,883.87		385,562.92
Total Personnel Services – Salaries	\$272,679.05	\$112,883.87		\$385,562.92
200 Personnel Services – Employee Benefits				
210 Group Insurance – Contracted Provider	43,126.27	24,134.16		67,260.43
220 Social Security Contributions	20,147.41	8,288.83		28,436.24
230 PSERS Retirement Contributions	96,146.54	39,802.82		135,949.36
260 Workers' Compensation	1,367.13	564.41		1,931.54
Total Personnel Services – Employee Benefits	\$160,787.35	\$72,790.22		\$233,577.57
300 Purchased Professional and Technical Services				
329 Professional Educational Services – Other	9,008.50	18,133.75		27,142.25
Total Purchased Professional and Technical Services	\$9,008.50	\$18,133.75		\$27,142.25
500 Other Purchased Services				
580 Travel	178.69	185.84		364.53
Total Other Purchased Services	\$178.69	\$185.84		\$364.53
600 Supplies				
610 General Supplies	712.80	7,571.08		8,283.88
Total Supplies	\$712.80	\$7,571.08		\$8,283.88
Total 2140 Psychological Services	\$443,366.39	\$211,564.76		\$654,931.15

General Fund (10)

2160 Social Work Services

100 Personnel Services – Salaries

	<u>Elementary</u>	<u>Secondary</u>	<u>Federal</u>	<u>Total</u>
100 Personnel Services – Salaries			131,574.22	132,294.14
Total Personnel Services – Salaries			\$131,574.22	\$132,294.14

200 Personnel Services – Employee Benefits

210 Group Insurance – Contracted Provider			29,334.25	29,334.25
220 Social Security Contributions			9,362.97	9,415.43
230 PSERS Retirement Contributions			23,196.51	46,435.41
260 Workers' Compensation			660.26	660.86
Total Personnel Services – Employee Benefits			\$62,553.99	\$85,845.95

300 Purchased Professional and Technical Services

323 Professional Educational Services – Other Educational Agencies			1,875.00	58,875.00
Total Purchased Professional and Technical Services			\$1,875.00	\$58,875.00

600 Supplies

610 General Supplies				732.90
Total Supplies				\$732.90

Total 2160 Social Work Services

			\$196,003.21	\$277,747.99
--	--	--	---------------------	---------------------

General Fund (10)

	<u>Elementary</u>	<u>Secondary</u>	<u>Federal</u>	<u>Total</u>
2170 Student Accounting Services				
500 Other Purchased Services				
580 Travel				325.00
Total Other Purchased Services				\$325.00
600 Supplies				
650 Supplies & Fees – Technology Related				19,740.35
Total Supplies				\$19,740.35
Total 2170 Student Accounting Services				\$20,065.35

General Fund (10)

	<u>Elementary</u>	<u>Secondary</u>	<u>Federal</u>	<u>Total</u>
2190 Other Student Services				
100 Personnel Services – Salaries				
100 Personnel Services – Salaries	3,040.89	4,417.32		7,458.21
Total Personnel Services – Salaries	\$3,040.89	\$4,417.32		\$7,458.21
200 Personnel Services – Employee Benefits				
210 Group Insurance – Contracted Provider		107.72		107.72
220 Social Security Contributions	231.25	330.95		562.20
230 PSERS Retirement Contributions	1,072.23	1,486.15		2,558.38
260 Workers' Compensation	13.58	21.24		34.82
Total Personnel Services – Employee Benefits	\$1,317.06	\$1,946.06		\$3,263.12
Total 2190 Other Student Services	\$4,357.95	\$6,363.38		\$10,721.33

General Fund (10)

	<u>Elementary</u>	<u>Secondary</u>	<u>Federal</u>	<u>Total</u>
2200 Support Services – Instructional Staff				
100 Personnel Services – Salaries				
100 Personnel Services – Salaries	640,465.08	465,684.21		1,106,149.29
Total Personnel Services – Salaries	\$640,465.08	\$465,684.21		\$1,106,149.29
200 Personnel Services – Employee Benefits				
210 Group Insurance – Contracted Provider	97,732.35	95,995.06		193,727.41
220 Social Security Contributions	47,916.74	34,691.90		82,608.64
230 PSERS Retirement Contributions	221,195.96	161,129.38		382,325.34
240 Tuition Reimbursement	54,730.18	57,421.82		112,152.00
260 Workers' Compensation	3,186.08	2,313.81		5,499.89
Total Personnel Services – Employee Benefits	\$424,761.31	\$351,551.97		\$776,313.28
300 Purchased Professional and Technical Services				
310 Official / Administrative Services	52,531.35	19,165.50		71,696.85
322 Professional Educational Services – lus	275.00	275.00		550.00
340 Technical Services	4,737.51	4,737.51		9,475.02
360 Employee Training and Development Services	10,437.50	63,917.11		74,354.61
Total Purchased Professional and Technical Services	\$67,981.36	\$88,095.12		\$156,076.48
400 Purchased Property Services				
430 Repairs and Maintenance Services	63,716.93	63,735.65		127,452.58
440 Rentals	22,538.00	60,762.00		83,300.00
Total Purchased Property Services	\$86,254.93	\$124,497.65		\$210,752.58
500 Other Purchased Services				
520 Insurance – General	4,081.50	4,081.50		8,163.00
580 Travel	7,353.37	7,992.94		15,346.31
Total Other Purchased Services	\$11,434.87	\$12,074.44		\$23,509.31
600 Supplies				
610 General Supplies	20,422.20	29,110.88		49,533.08
630 Food	1,635.71	1,844.34		3,480.05
640 Books and Periodicals	41,833.49	35,138.67		76,972.16
650 Supplies & Fees – Technology Related	65,218.72	65,608.63		130,827.35
Total Supplies	\$129,110.12	\$131,702.52		\$260,812.64
700 Property				
736 Technology Equipment Lease	351,688.22	437,481.50		789,169.72
752 Capital Equipment – Original and Additional	21,276.95	23,523.20		44,800.15
Total Property	\$372,965.17	\$461,004.70		\$833,969.87
800 Other Objects				
810 Dues and Fees	2,523.11	3,607.11		6,130.22
Total Other Objects	\$2,523.11	\$3,607.11		\$6,130.22
Total 2200 Support Services – Instructional Staff	\$1,735,495.95	\$1,638,217.72		\$3,373,713.67

General Fund (10)

2240 Computer-Assisted Instruction Support Services

	<u>Elementary</u>	<u>Secondary</u>	<u>Federal</u>	<u>Total</u>
100 Personnel Services – Salaries				
100 Personnel Services – Salaries	96,244.99	110,285.43		206,530.42
Total Personnel Services – Salaries	\$96,244.99	\$110,285.43		\$206,530.42
200 Personnel Services – Employee Benefits				
210 Group Insurance – Contracted Provider	19,775.43	21,220.05		40,995.48
220 Social Security Contributions	7,291.30	8,369.17		15,660.47
230 PSERS Retirement Contributions	31,926.66	36,767.77		68,694.43
260 Workers' Compensation	483.31	550.67		1,033.98
Total Personnel Services – Employee Benefits	\$59,476.70	\$66,907.66		\$126,384.36
300 Purchased Professional and Technical Services				
322 Professional Educational Services – Ius	275.00	275.00		550.00
340 Technical Services	4,737.51	4,737.51		9,475.02
Total Purchased Professional and Technical Services	\$5,012.51	\$5,012.51		\$10,025.02
400 Purchased Property Services				
430 Repairs and Maintenance Services	63,716.93	63,735.65		127,452.58
440 Rentals	22,538.00	60,762.00		83,300.00
Total Purchased Property Services	\$86,254.93	\$124,497.65		\$210,752.58
500 Other Purchased Services				
520 Insurance – General	4,081.50	4,081.50		8,163.00
580 Travel	1,290.77	1,301.26		2,592.03
Total Other Purchased Services	\$5,372.27	\$5,382.76		\$10,755.03
600 Supplies				
610 General Supplies	13,296.48	23,579.71		36,876.19
650 Supplies & Fees – Technology Related	57,846.16	55,630.49		113,476.65
Total Supplies	\$71,142.64	\$79,210.20		\$150,352.84
700 Property				
736 Technology Equipment Lease	351,688.22	437,481.50		789,169.72
752 Capital Equipment – Original and Additional	21,276.95	23,523.20		44,800.15
Total Property	\$372,965.17	\$461,004.70		\$833,969.87
800 Other Objects				
810 Dues and Fees	1,019.77	1,699.77		2,719.54
Total Other Objects	\$1,019.77	\$1,699.77		\$2,719.54
Total 2240 Computer-Assisted Instruction Support Services	\$697,488.98	\$854,000.68		\$1,551,489.66

General Fund (10)

2250 School Library Services

	<u>Elementary</u>	<u>Secondary</u>	<u>Federal</u>	<u>Total</u>
100 Personnel Services – Salaries				
100 Personnel Services – Salaries	372,352.85	175,156.72		547,509.57
Total Personnel Services – Salaries	\$372,352.85	\$175,156.72		\$547,509.57
200 Personnel Services – Employee Benefits				
210 Group Insurance – Contracted Provider	66,165.12	40,486.21		106,651.33
220 Social Security Contributions	27,189.07	12,926.57		40,115.64
230 PSERS Retirement Contributions	129,334.70	61,760.21		191,094.91
260 Workers' Compensation	1,833.74	875.68		2,709.42
Total Personnel Services – Employee Benefits	\$224,522.63	\$116,048.67		\$340,571.30
600 Supplies				
610 General Supplies	4,471.52	1,840.94		6,312.46
640 Books and Periodicals	35,941.06	32,663.91		68,604.97
Total Supplies	\$40,412.58	\$34,504.85		\$74,917.43
800 Other Objects				
810 Dues and Fees		60.00		60.00
Total Other Objects		\$60.00		\$60.00
Total 2250 School Library Services	\$637,288.06	\$325,770.24		\$963,058.30

General Fund (10)

2260 Instruction and Curriculum Development Services

	<u>Elementary</u>	<u>Secondary</u>	<u>Federal</u>	<u>Total</u>
100 Personnel Services – Salaries				
100 Personnel Services – Salaries	171,867.24	180,242.06		352,109.30
Total Personnel Services – Salaries	\$171,867.24	\$180,242.06		\$352,109.30
200 Personnel Services – Employee Benefits				
210 Group Insurance – Contracted Provider	11,791.80	34,288.80		46,080.60
220 Social Security Contributions	13,436.37	13,396.16		26,832.53
230 PSERS Retirement Contributions	59,934.60	62,601.40		122,536.00
260 Workers' Compensation	869.03	887.46		1,756.49
Total Personnel Services – Employee Benefits	\$86,031.80	\$111,173.82		\$197,205.62
300 Purchased Professional and Technical Services				
310 Official / Administrative Services	477.00	15.00		492.00
Total Purchased Professional and Technical Services	\$477.00	\$15.00		\$492.00
500 Other Purchased Services				
580 Travel	2,932.79	1,898.28		4,831.07
Total Other Purchased Services	\$2,932.79	\$1,898.28		\$4,831.07
600 Supplies				
610 General Supplies	2,654.20	3,690.23		6,344.43
630 Food	147.71	356.34		504.05
640 Books and Periodicals	5,438.13	1,985.46		7,423.59
650 Supplies & Fees – Technology Related	7,372.56	9,978.14		17,350.70
Total Supplies	\$15,612.60	\$16,010.17		\$31,622.77
800 Other Objects				
810 Dues and Fees	1,503.34	1,847.34		3,350.68
Total Other Objects	\$1,503.34	\$1,847.34		\$3,350.68
Total 2260 Instruction and Curriculum Development Services	\$278,424.77	\$311,186.67		\$589,611.44

General Fund (10)

2270 Instructional Staff Professional Development Services	<u>Elementary</u>	<u>Secondary</u>	<u>Federal</u>	<u>Total</u>
200 Personnel Services – Employee Benefits				
240 Tuition Reimbursement	54,730.18	57,421.82		112,152.00
Total Personnel Services – Employee Benefits	\$54,730.18	\$57,421.82		\$112,152.00
300 Purchased Professional and Technical Services				
310 Official / Administrative Services	52,054.35	19,150.50		71,204.85
360 Employee Training and Development Services	10,437.50	63,917.11		74,354.61
Total Purchased Professional and Technical Services	\$62,491.85	\$83,067.61		\$145,559.46
500 Other Purchased Services				
580 Travel	3,129.81	4,793.40		7,923.21
Total Other Purchased Services	\$3,129.81	\$4,793.40		\$7,923.21
600 Supplies				
630 Food	1,488.00	1,488.00		2,976.00
640 Books and Periodicals	454.30	489.30		943.60
Total Supplies	\$1,942.30	\$1,977.30		\$3,919.60
Total 2270 Instructional Staff Professional Development Services	\$122,294.14	\$147,260.13		\$269,554.27

General Fund (10)

	<u>Elementary</u>	<u>Secondary</u>	<u>Federal</u>	<u>Total</u>
2300 Support Services – Administration				
100 Personnel Services – Salaries				
100 Personnel Services – Salaries	726,273.90	718,667.26		1,942,262.63
Total Personnel Services – Salaries	\$726,273.90	\$718,667.26		\$1,942,262.63
200 Personnel Services – Employee Benefits				
210 Group Insurance – Contracted Provider	117,595.23	177,018.27		378,592.65
220 Social Security Contributions	54,304.47	53,352.83		143,565.73
230 PSERS Retirement Contributions	247,651.12	251,798.84		659,540.44
260 Workers' Compensation	3,592.00	3,582.63		9,444.82
291 Other Retirement Plans				12,117.26
Total Personnel Services – Employee Benefits	\$423,142.82	\$485,752.57		\$1,203,260.90
300 Purchased Professional and Technical Services				
310 Official / Administrative Services				175,268.73
330 Other Professional Services				31,750.00
340 Technical Services				21,291.81
Total Purchased Professional and Technical Services				\$228,310.54
400 Purchased Property Services				
440 Rentals				1,836.00
Total Purchased Property Services				\$1,836.00
500 Other Purchased Services				
520 Insurance – General				73,437.75
530 Communications				58,198.55
549 Other Advertising/Public Relations				2,976.38
580 Travel	4,104.46	3,054.01		19,387.92
Total Other Purchased Services	\$4,104.46	\$3,054.01		\$154,000.60
600 Supplies				
610 General Supplies	1,173.82	7,512.25		21,243.20
630 Food	5,701.99	4,753.16		25,562.23
640 Books and Periodicals				2,629.24
650 Supplies & Fees – Technology Related				16,539.59
Total Supplies	\$6,875.81	\$12,265.41		\$65,974.26
700 Property				
739 Leases - Other				19,948.97
Total Property				\$19,948.97
800 Other Objects				
810 Dues and Fees	5,471.56	5,862.09		18,079.68
Total Other Objects	\$5,471.56	\$5,862.09		\$18,079.68
Total 2300 Support Services – Administration	\$1,165,868.55	\$1,225,601.34		\$3,633,673.58

General Fund (10)

2310 Board Services

Elementary

Secondary

Federal

Total

300 Purchased Professional and Technical Services

310 Official / Administrative Services

375.00

Total Purchased Professional and Technical Services

\$375.00

500 Other Purchased Services

520 Insurance – General

66,966.00

580 Travel

1,663.60

Total Other Purchased Services

\$68,629.60

600 Supplies

610 General Supplies

4,092.85

650 Supplies & Fees – Technology Related

2,858.00

Total Supplies

\$6,950.85

Total 2310 Board Services

\$75,955.45

General Fund (10)

	<u>Elementary</u>	<u>Secondary</u>	<u>Federal</u>	<u>Total</u>
2330 Tax Assessment and Collection Services				
100 Personnel Services – Salaries				
100 Personnel Services – Salaries				52,476.40
Total Personnel Services – Salaries				\$52,476.40
200 Personnel Services – Employee Benefits				
210 Group Insurance – Contracted Provider				3,302.16
220 Social Security Contributions				4,000.00
230 PSERS Retirement Contributions				5,992.48
260 Workers' Compensation				85.02
Total Personnel Services – Employee Benefits				\$13,379.66
300 Purchased Professional and Technical Services				
310 Official / Administrative Services				6,000.00
340 Technical Services				21,291.81
Total Purchased Professional and Technical Services				\$27,291.81
500 Other Purchased Services				
520 Insurance – General				6,471.75
530 Communications				31,900.15
Total Other Purchased Services				\$38,371.90
Total 2330 Tax Assessment and Collection Services				\$131,519.77

General Fund (10)

2350 Legal and Accounting Services

Elementary

Secondary

Federal

Total

300 Purchased Professional and Technical Services

310 Official / Administrative Services

139,795.07

330 Other Professional Services

31,750.00

Total Purchased Professional and Technical Services

\$171,545.07

Total 2350 Legal and Accounting Services

\$171,545.07

General Fund (10)

2360 Office of the Superintendent / Executive Director Services

Elementary

Secondary

Federal

Total

100 Personnel Services – Salaries				
100 Personnel Services – Salaries				444,845.07
Total Personnel Services – Salaries				\$444,845.07
200 Personnel Services – Employee Benefits				
210 Group Insurance – Contracted Provider				80,676.99
220 Social Security Contributions				31,908.43
230 PSERS Retirement Contributions				154,098.00
260 Workers' Compensation				2,185.17
291 Other Retirement Plans				12,117.26
Total Personnel Services – Employee Benefits				\$280,985.85
300 Purchased Professional and Technical Services				
310 Official / Administrative Services				29,098.66
Total Purchased Professional and Technical Services				\$29,098.66
500 Other Purchased Services				
580 Travel				10,565.85
Total Other Purchased Services				\$10,565.85
600 Supplies				
610 General Supplies				8,464.28
630 Food				15,107.08
640 Books and Periodicals				2,629.24
650 Supplies & Fees – Technology Related				13,681.59
Total Supplies				\$39,882.19
800 Other Objects				
810 Dues and Fees				6,746.03
Total Other Objects				\$6,746.03
Total 2360 Office of the Superintendent / Executive Director Services				\$812,123.65

General Fund (10)

2380 Office of the Principal Services

100 Personnel Services – Salaries

	<u>Elementary</u>	<u>Secondary</u>	<u>Federal</u>	<u>Total</u>
100 Personnel Services – Salaries	726,273.90	718,667.26		1,444,941.16
Total Personnel Services – Salaries	\$726,273.90	\$718,667.26		\$1,444,941.16

200 Personnel Services – Employee Benefits

210 Group Insurance – Contracted Provider	117,595.23	177,018.27		294,613.50
220 Social Security Contributions	54,304.47	53,352.83		107,657.30
230 PSERS Retirement Contributions	247,651.12	251,798.84		499,449.96
260 Workers' Compensation	3,592.00	3,582.63		7,174.63
Total Personnel Services – Employee Benefits	\$423,142.82	\$485,752.57		\$908,895.39

500 Other Purchased Services

580 Travel	4,104.46	3,054.01		7,158.47
Total Other Purchased Services	\$4,104.46	\$3,054.01		\$7,158.47

600 Supplies

610 General Supplies	1,173.82	7,512.25		8,686.07
630 Food	5,701.99	4,753.16		10,455.15
Total Supplies	\$6,875.81	\$12,265.41		\$19,141.22

800 Other Objects

810 Dues and Fees	5,471.56	5,862.09		11,333.65
Total Other Objects	\$5,471.56	\$5,862.09		\$11,333.65

Total 2380 Office of the Principal Services

	\$1,165,868.55	\$1,225,601.34		\$2,391,469.89
--	-----------------------	-----------------------	--	-----------------------

General Fund (10)

2390 Other Administration Services

Elementary

Secondary

Federal

Total

400 Purchased Property Services

440 Rentals

1,836.00

Total Purchased Property Services

\$1,836.00

500 Other Purchased Services

530 Communications

26,298.40

549 Other Advertising/Public Relations

2,976.38

Total Other Purchased Services

\$29,274.78

700 Property

739 Leases - Other

19,948.97

Total Property

\$19,948.97

Total 2390 Other Administration Services

\$51,059.75

General Fund (10)

2400 Support Services – Pupil Health

Elementary Secondary Federal Total

100	<u>Personnel Services – Salaries</u>			
	100 Personnel Services – Salaries			301,388.42
Total Personnel Services – Salaries				\$301,388.42
200	<u>Personnel Services – Employee Benefits</u>			
	210 Group Insurance – Contracted Provider			87,385.75
	220 Social Security Contributions			22,220.55
	230 PSERS Retirement Contributions			102,806.53
	260 Workers' Compensation			1,510.90
Total Personnel Services – Employee Benefits				\$213,923.73
300	<u>Purchased Professional and Technical Services</u>			
	310 Official / Administrative Services			4,777.50
	322 Professional Educational Services – lus			502.32
	330 Other Professional Services			98,262.26
Total Purchased Professional and Technical Services				\$103,542.08
600	<u>Supplies</u>			
	610 General Supplies			17,406.55
Total Supplies				\$17,406.55
800	<u>Other Objects</u>			
	810 Dues and Fees			60.00
Total Other Objects				\$60.00
Total 2400 Support Services – Pupil Health				\$636,320.78

General Fund (10)

2420 Medical Services

Elementary

Secondary

Federal

Total

300 Purchased Professional and Technical Services

310 Official / Administrative Services

4,193.00

322 Professional Educational Services – Ius

502.32

Total Purchased Professional and Technical Services

\$4,695.32

Total 2420 Medical Services

\$4,695.32

General Fund (10)

2430 Dental Services

Elementary

Secondary

Federal

Total

300 Purchased Professional and Technical Services

310 Official / Administrative Services

584.50

Total Purchased Professional and Technical Services

\$584.50

Total 2430 Dental Services

\$584.50

General Fund (10)

2440 Nursing Services

	<u>Elementary</u>	<u>Secondary</u>	<u>Federal</u>	<u>Total</u>
100 Personnel Services – Salaries				
100 Personnel Services – Salaries				301,388.42
Total Personnel Services – Salaries				\$301,388.42
200 Personnel Services – Employee Benefits				
210 Group Insurance – Contracted Provider				87,385.75
220 Social Security Contributions				22,220.55
230 PSERS Retirement Contributions				102,806.53
260 Workers' Compensation				1,510.90
Total Personnel Services – Employee Benefits				\$213,923.73
300 Purchased Professional and Technical Services				
330 Other Professional Services				98,262.26
Total Purchased Professional and Technical Services				\$98,262.26
600 Supplies				
610 General Supplies				17,406.55
Total Supplies				\$17,406.55
800 Other Objects				
810 Dues and Fees				60.00
Total Other Objects				\$60.00
Total 2440 Nursing Services				\$631,040.96

General Fund (10)

2500 Support Services – Business

Elementary Secondary Federal Total

100 Personnel Services – Salaries

100 Personnel Services – Salaries 517,916.73

Total Personnel Services – Salaries \$517,916.73

200 Personnel Services – Employee Benefits

210 Group Insurance – Contracted Provider 119,307.91

220 Social Security Contributions 38,787.32

230 PSERS Retirement Contributions 182,375.71

260 Workers' Compensation 2,608.22

291 Other Retirement Plans 6,231.45

Total Personnel Services – Employee Benefits \$349,310.61

300 Purchased Professional and Technical Services

340 Technical Services 24,980.25

Total Purchased Professional and Technical Services \$24,980.25

400 Purchased Property Services

410 Cleaning Services 1,774.98

430 Repairs and Maintenance Services 129,367.95

440 Rentals 1,317.81

Total Purchased Property Services \$132,460.74

500 Other Purchased Services

550 Printing and Binding 442.22

580 Travel 4,336.35

Total Other Purchased Services \$4,778.57

600 Supplies

610 General Supplies 39,819.75

Total Supplies \$39,819.75

800 Other Objects

810 Dues and Fees 25,663.07

Total Other Objects \$25,663.07

Total 2500 Support Services – Business \$1,094,929.72

General Fund (10)

2510 Fiscal Services

Elementary

Secondary

Federal

Total

100 Personnel Services – Salaries

100 Personnel Services – Salaries

351,802.92

Total Personnel Services – Salaries

\$351,802.92

200 Personnel Services – Employee Benefits

210 Group Insurance – Contracted Provider

58,481.08

220 Social Security Contributions

26,485.24

230 PSERS Retirement Contributions

124,593.68

260 Workers' Compensation

1,786.43

291 Other Retirement Plans

6,231.45

Total Personnel Services – Employee Benefits

\$217,577.88

300 Purchased Professional and Technical Services

340 Technical Services

24,980.25

Total Purchased Professional and Technical Services

\$24,980.25

400 Purchased Property Services

410 Cleaning Services

1,774.98

Total Purchased Property Services

\$1,774.98

500 Other Purchased Services

580 Travel

4,336.35

Total Other Purchased Services

\$4,336.35

600 Supplies

610 General Supplies

2,471.61

Total Supplies

\$2,471.61

800 Other Objects

810 Dues and Fees

6,293.03

Total Other Objects

\$6,293.03

Total 2510 Fiscal Services

\$609,237.02

General Fund (10)

2511 Supervision of Fiscal Services - Head of Component

	<u>Elementary</u>	<u>Secondary</u>	<u>Federal</u>	<u>Total</u>
100 Personnel Services – Salaries				
100 Personnel Services – Salaries				155,684.56
Total Personnel Services – Salaries				\$155,684.56
200 Personnel Services – Employee Benefits				
210 Group Insurance – Contracted Provider				2,265.24
220 Social Security Contributions				11,532.51
230 PSERS Retirement Contributions				53,529.66
260 Workers' Compensation				778.80
291 Other Retirement Plans				6,231.45
Total Personnel Services – Employee Benefits				\$74,337.66
500 Other Purchased Services				
580 Travel				4,336.35
Total Other Purchased Services				\$4,336.35
800 Other Objects				
810 Dues and Fees				6,293.03
Total Other Objects				\$6,293.03
Total 2511 Supervision of Fiscal Services - Head of Component				\$240,651.60

General Fund (10)

2513 Receiving and Disbursing Funds Services

Elementary

Secondary

Federal

Total

100 Personnel Services – Salaries

100 Personnel Services – Salaries

63,587.91

Total Personnel Services – Salaries

\$63,587.91

200 Personnel Services – Employee Benefits

210 Group Insurance – Contracted Provider

21,995.86

220 Social Security Contributions

4,635.95

230 PSERS Retirement Contributions

22,294.21

260 Workers' Compensation

316.16

Total Personnel Services – Employee Benefits

\$49,242.18

Total 2513 Receiving and Disbursing Funds Services

\$112,830.09

General Fund (10)

2514 Payroll Services

Elementary

Secondary

Federal

Total

100 Personnel Services – Salaries

100 Personnel Services – Salaries

58,944.12

Total Personnel Services – Salaries

\$58,944.12

200 Personnel Services – Employee Benefits

210 Group Insurance – Contracted Provider

10,002.48

220 Social Security Contributions

4,417.62

230 PSERS Retirement Contributions

20,691.63

260 Workers' Compensation

293.41

Total Personnel Services – Employee Benefits

\$35,405.14

Total 2514 Payroll Services

\$94,349.26

General Fund (10)

	<u>Elementary</u>	<u>Secondary</u>	<u>Federal</u>	<u>Total</u>
2515 Financial Accounting Services				
100 Personnel Services – Salaries				
100 Personnel Services – Salaries				73,586.33
Total Personnel Services – Salaries				\$73,586.33
200 Personnel Services – Employee Benefits				
210 Group Insurance – Contracted Provider				24,217.50
220 Social Security Contributions				5,899.16
230 PSERS Retirement Contributions				28,078.18
260 Workers' Compensation				398.06
Total Personnel Services – Employee Benefits				\$58,592.90
300 Purchased Professional and Technical Services				
340 Technical Services				24,980.25
Total Purchased Professional and Technical Services				\$24,980.25
400 Purchased Property Services				
410 Cleaning Services				1,774.98
Total Purchased Property Services				\$1,774.98
600 Supplies				
610 General Supplies				2,471.61
Total Supplies				\$2,471.61
Total 2515 Financial Accounting Services				\$161,406.07

General Fund (10)

2530 Warehousing and Distributing Services

Elementary

Secondary

Federal

Total

100 Personnel Services – Salaries

100 Personnel Services – Salaries

70,480.55

Total Personnel Services – Salaries

\$70,480.55

200 Personnel Services – Employee Benefits

210 Group Insurance – Contracted Provider

33,022.15

220 Social Security Contributions

5,213.48

230 PSERS Retirement Contributions

24,523.77

260 Workers' Compensation

350.20

Total Personnel Services – Employee Benefits

\$63,109.60

Total 2530 Warehousing and Distributing Services

\$133,590.15

General Fund (10)

	<u>Elementary</u>	<u>Secondary</u>	<u>Federal</u>	<u>Total</u>
2540 Printing, Publishing and Duplicating Services				
100 Personnel Services – Salaries				
100 Personnel Services – Salaries				95,633.26
Total Personnel Services – Salaries				\$95,633.26
200 Personnel Services – Employee Benefits				
210 Group Insurance – Contracted Provider				27,804.68
220 Social Security Contributions				7,088.60
230 PSERS Retirement Contributions				33,258.26
260 Workers' Compensation				471.59
Total Personnel Services – Employee Benefits				\$68,623.13
400 Purchased Property Services				
430 Repairs and Maintenance Services				56,969.33
440 Rentals				(7,910.15)
Total Purchased Property Services				\$49,059.18
500 Other Purchased Services				
550 Printing and Binding				442.22
Total Other Purchased Services				\$442.22
600 Supplies				
610 General Supplies				37,348.14
Total Supplies				\$37,348.14
Total 2540 Printing, Publishing and Duplicating Services				\$251,105.93

General Fund (10)

2590 Other Support Services – Business

Elementary

Secondary

Federal

Total

400 Purchased Property Services

430 Repairs and Maintenance Services

72,398.62

440 Rentals

9,227.96

Total Purchased Property Services

\$81,626.58

800 Other Objects

810 Dues and Fees

19,370.04

Total Other Objects

\$19,370.04

Total 2590 Other Support Services – Business

\$100,996.62

General Fund (10)

	<u>Elementary</u>	<u>Secondary</u>	<u>Federal</u>	<u>Total</u>
2600 Operation and Maintenance of Plant Services				
100 Personnel Services – Salaries				
100 Personnel Services – Salaries				2,148,276.76
Total Personnel Services – Salaries				\$2,148,276.76
200 Personnel Services – Employee Benefits				
210 Group Insurance – Contracted Provider				454,553.52
220 Social Security Contributions				161,749.53
230 PSERS Retirement Contributions				734,910.81
260 Workers' Compensation				10,673.54
Total Personnel Services – Employee Benefits				\$1,361,887.40
300 Purchased Professional and Technical Services				
350 Security / Safety Services				9,344.68
Total Purchased Professional and Technical Services				\$9,344.68
400 Purchased Property Services				
410 Cleaning Services				40,207.79
420 Utility Services				126,223.07
430 Repairs and Maintenance Services				245,919.35
440 Rentals				11,069.84
460 Extermination Services				6,546.02
Total Purchased Property Services				\$429,966.07
500 Other Purchased Services				
523 General Property and Liability Insurance				202,210.80
530 Communications				74,450.26
580 Travel				1,499.48
Total Other Purchased Services				\$278,160.54
600 Supplies				
610 General Supplies	262,634.06	204,975.11		467,609.17
620 Energy				577,255.68
630 Food				1,873.78
650 Supplies & Fees – Technology Related			7,980.00	26,008.46
Total Supplies	\$262,634.06	\$204,975.11	\$7,980.00	\$1,072,747.09
700 Property				
739 Leases - Other				41,932.07
752 Capital Equipment – Original and Additional				76,249.64
Total Property				\$118,181.71
800 Other Objects				
810 Dues and Fees				4,932.39
Total Other Objects				\$4,932.39
Total 2600 Operation and Maintenance of Plant Services	\$262,634.06	\$204,975.11	\$7,980.00	\$5,423,496.64

General Fund (10)

	<u>Elementary</u>	<u>Secondary</u>	<u>Federal</u>	<u>Total</u>
2610 Supervision of Operation and Maintenance of Plant Services				
100 <u>Personnel Services – Salaries</u>				
100 Personnel Services – Salaries				280,919.45
Total Personnel Services – Salaries				\$280,919.45
200 <u>Personnel Services – Employee Benefits</u>				
210 Group Insurance – Contracted Provider				58,002.02
220 Social Security Contributions				21,082.23
230 PSERS Retirement Contributions				97,463.29
260 Workers' Compensation				1,401.91
Total Personnel Services – Employee Benefits				\$177,949.45
500 <u>Other Purchased Services</u>				
580 Travel				965.52
Total Other Purchased Services				\$965.52
800 <u>Other Objects</u>				
810 Dues and Fees				3,930.51
Total Other Objects				\$3,930.51
Total 2610 Supervision of Operation and Maintenance of Plant Services				\$463,764.93

General Fund (10)

2611 Supervision of Operation and Maintenance of Plant Services – Head of Component

Elementary

Secondary

Federal

Total

100 Personnel Services – Salaries				
100 Personnel Services – Salaries				280,919.45
Total Personnel Services – Salaries				\$280,919.45
200 Personnel Services – Employee Benefits				
210 Group Insurance – Contracted Provider				58,002.02
220 Social Security Contributions				21,082.23
230 PSERS Retirement Contributions				97,463.29
260 Workers' Compensation				1,401.91
Total Personnel Services – Employee Benefits				\$177,949.45
500 Other Purchased Services				
580 Travel				965.52
Total Other Purchased Services				\$965.52
800 Other Objects				
810 Dues and Fees				3,930.51
Total Other Objects				\$3,930.51
Total 2611 Supervision of Operation and Maintenance of Plant Services – Head of Component				\$463,764.93

General Fund (10)

	<u>Elementary</u>	<u>Secondary</u>	<u>Federal</u>	<u>Total</u>
2620 Operation of Buildings Services				
100 Personnel Services – Salaries				
100 Personnel Services – Salaries				1,786,473.02
Total Personnel Services – Salaries				\$1,786,473.02
200 Personnel Services – Employee Benefits				
210 Group Insurance – Contracted Provider				381,042.44
220 Social Security Contributions				134,466.41
230 PSERS Retirement Contributions				609,114.81
260 Workers' Compensation				8,859.08
Total Personnel Services – Employee Benefits				\$1,133,482.74
400 Purchased Property Services				
410 Cleaning Services				40,207.79
420 Utility Services				126,223.07
430 Repairs and Maintenance Services				188,564.14
440 Rentals				11,069.84
460 Extermination Services				6,546.02
Total Purchased Property Services				\$372,610.86
500 Other Purchased Services				
523 General Property and Liability Insurance				197,291.80
530 Communications				74,450.26
Total Other Purchased Services				\$271,742.06
600 Supplies				
610 General Supplies	237,825.21	178,946.13		416,771.34
620 Energy				577,255.68
630 Food				1,873.78
650 Supplies & Fees – Technology Related				14,278.46
Total Supplies	\$237,825.21	\$178,946.13		\$1,010,179.26
700 Property				
739 Leases - Other				41,932.07
752 Capital Equipment – Original and Additional				76,249.64
Total Property				\$118,181.71
800 Other Objects				
810 Dues and Fees				1,001.88
Total Other Objects				\$1,001.88
Total 2620 Operation of Buildings Services	\$237,825.21	\$178,946.13		\$4,693,671.53

General Fund (10)

	<u>Elementary</u>	<u>Secondary</u>	<u>Federal</u>	<u>Total</u>
2630 Care and Upkeep of Grounds Services				
100 Personnel Services – Salaries				
100 Personnel Services – Salaries				37,183.51
Total Personnel Services – Salaries				\$37,183.51
200 Personnel Services – Employee Benefits				
210 Group Insurance – Contracted Provider				6,899.16
220 Social Security Contributions				2,953.18
230 PSERS Retirement Contributions				12,923.82
260 Workers' Compensation				194.04
Total Personnel Services – Employee Benefits				\$22,970.20
400 Purchased Property Services				
430 Repairs and Maintenance Services				38,386.07
Total Purchased Property Services				\$38,386.07
600 Supplies				
610 General Supplies	16,812.70	17,639.57		34,452.27
Total Supplies	\$16,812.70	\$17,639.57		\$34,452.27
Total 2630 Care and Upkeep of Grounds Services	\$16,812.70	\$17,639.57		\$132,992.05

General Fund (10)

	<u>Elementary</u>	<u>Secondary</u>	<u>Federal</u>	<u>Total</u>
2640 Care and Upkeep of Equipment Services				
400 <u>Purchased Property Services</u>				
430 Repairs and Maintenance Services				885.31
Total Purchased Property Services				\$885.31
600 <u>Supplies</u>				
610 General Supplies	3,304.66	3,467.18		6,771.84
Total Supplies	\$3,304.66	\$3,467.18		\$6,771.84
Total 2640 Care and Upkeep of Equipment Services	\$3,304.66	\$3,467.18		\$7,657.15

General Fund (10)

	<u>Elementary</u>	<u>Secondary</u>	<u>Federal</u>	<u>Total</u>
2650 Vehicle Operation and Maintenance Services (Other Than Student Transportation Vehicles)				
400 <u>Purchased Property Services</u>				
430 Repairs and Maintenance Services				18,083.83
Total Purchased Property Services				\$18,083.83
600 <u>Supplies</u>				
610 General Supplies	2,716.24	2,849.83		5,566.07
Total Supplies	\$2,716.24	\$2,849.83		\$5,566.07
Total 2650 Vehicle Operation and Maintenance Services (Other Than Student Transportation Vehicles)	\$2,716.24	\$2,849.83		\$23,649.90

General Fund (10)

2660 Safety and Security Services

100 Personnel Services – Salaries

	<u>Elementary</u>	<u>Secondary</u>	<u>Federal</u>	<u>Total</u>
100 Personnel Services – Salaries				43,700.78
Total Personnel Services – Salaries				\$43,700.78

200 Personnel Services – Employee Benefits

210 Group Insurance – Contracted Provider				8,609.90
220 Social Security Contributions				3,247.71
230 PSERS Retirement Contributions				15,408.89
260 Workers' Compensation				218.51
Total Personnel Services – Employee Benefits				\$27,485.01

300 Purchased Professional and Technical Services

350 Security / Safety Services				9,344.68
Total Purchased Professional and Technical Services				\$9,344.68

500 Other Purchased Services

523 General Property and Liability Insurance				4,919.00
580 Travel				533.96
Total Other Purchased Services				\$5,452.96

600 Supplies

610 General Supplies	1,975.25	2,072.40		4,047.65
650 Supplies & Fees – Technology Related			7,980.00	11,730.00

Total Supplies	\$1,975.25	\$2,072.40	\$7,980.00	\$15,777.65
-----------------------	-------------------	-------------------	-------------------	--------------------

Total 2660 Safety and Security Services	\$1,975.25	\$2,072.40	\$7,980.00	\$101,761.08
--	-------------------	-------------------	-------------------	---------------------

General Fund (10)

2700 Student Transportation Services

	<u>Elementary</u>	<u>Secondary</u>	<u>Federal</u>	<u>Total</u>
100 Personnel Services – Salaries				
100 Personnel Services – Salaries				16,995.14
Total Personnel Services – Salaries				\$16,995.14
200 Personnel Services – Employee Benefits				
210 Group Insurance – Contracted Provider				3,302.46
220 Social Security Contributions				1,285.36
230 PSERS Retirement Contributions				5,992.47
260 Workers' Compensation				84.76
Total Personnel Services – Employee Benefits				\$10,665.05
400 Purchased Property Services				
430 Repairs and Maintenance Services				8,150.00
Total Purchased Property Services				\$8,150.00
500 Other Purchased Services				
513 Contracted Carriers			21,865.00	2,779,762.54
516 Student Transportation Services From the IU				136,270.95
Total Other Purchased Services			\$21,865.00	\$2,916,033.49
600 Supplies				
610 General Supplies				10.00
Total Supplies				\$10.00
800 Other Objects				
810 Dues and Fees				2,000.00
Total Other Objects				\$2,000.00
Total 2700 Student Transportation Services			\$21,865.00	\$2,953,853.68

General Fund (10)

2720 Vehicle Operation Services

	<u>Elementary</u>	<u>Secondary</u>	<u>Federal</u>	<u>Total</u>
100 Personnel Services – Salaries				
100 Personnel Services – Salaries				16,995.14
Total Personnel Services – Salaries				\$16,995.14
200 Personnel Services – Employee Benefits				
210 Group Insurance – Contracted Provider				3,302.46
220 Social Security Contributions				1,285.36
230 PSERS Retirement Contributions				5,992.47
260 Workers' Compensation				84.76
Total Personnel Services – Employee Benefits				\$10,665.05
400 Purchased Property Services				
430 Repairs and Maintenance Services				8,150.00
Total Purchased Property Services				\$8,150.00
500 Other Purchased Services				
513 Contracted Carriers			21,865.00	2,661,892.12
516 Student Transportation Services From the IU				136,270.95
Total Other Purchased Services			\$21,865.00	\$2,798,163.07
600 Supplies				
610 General Supplies				10.00
Total Supplies				\$10.00
800 Other Objects				
810 Dues and Fees				2,000.00
Total Other Objects				\$2,000.00
Total 2720 Vehicle Operation Services			\$21,865.00	\$2,835,983.26

General Fund (10)

	<u>Elementary</u>	<u>Secondary</u>	<u>Federal</u>	<u>Total</u>
2750 Nonpublic Transportation				
500 <u>Other Purchased Services</u>				
513 Contracted Carriers				117,870.42
Total Other Purchased Services				\$117,870.42
Total 2750 Nonpublic Transportation				\$117,870.42

General Fund (10)

2800 Support Services – Central

Elementary Secondary Federal Total

100 Personnel Services – Salaries

100 Personnel Services – Salaries 630,704.91

Total Personnel Services – Salaries \$630,704.91

200 Personnel Services – Employee Benefits

210 Group Insurance – Contracted Provider 134,499.92

220 Social Security Contributions 47,427.77

230 PSERS Retirement Contributions 222,471.62

240 Tuition Reimbursement 21,402.00

260 Workers' Compensation 3,154.62

Total Personnel Services – Employee Benefits \$428,955.93

300 Purchased Professional and Technical Services

310 Official / Administrative Services 33,051.19

329 Professional Educational Services – Other 209,223.00 543,778.85

340 Technical Services 296.00

Total Purchased Professional and Technical Services \$209,223.00 \$577,126.04

500 Other Purchased Services

549 Other Advertising/Public Relations 7,492.81

580 Travel 94.32

Total Other Purchased Services \$7,587.13

600 Supplies

610 General Supplies 10,915.93

630 Food 407.55

650 Supplies & Fees – Technology Related 2,399.56

Total Supplies \$13,723.04

800 Other Objects

810 Dues and Fees 12,831.10

890 Miscellaneous Expenditures 530.50

Total Other Objects \$13,361.60

Total 2800 Support Services – Central \$209,223.00 \$1,671,458.65

General Fund (10)

2810 Planning, Research, Development and Evaluation Services

Elementary

Secondary

Federal

Total

100 Personnel Services – Salaries

100 Personnel Services – Salaries

301,059.54

Total Personnel Services – Salaries

\$301,059.54

200 Personnel Services – Employee Benefits

210 Group Insurance – Contracted Provider

56,635.44

220 Social Security Contributions

22,555.77

230 PSERS Retirement Contributions

105,568.96

260 Workers' Compensation

1,496.97

Total Personnel Services – Employee Benefits

\$186,257.14

Total 2810 Planning, Research, Development and Evaluation Services

\$487,316.68

General Fund (10)

2820 Information Services

Elementary Secondary Federal Total

100	<u>Personnel Services – Salaries</u>			
	100 Personnel Services – Salaries			106,766.73
Total Personnel Services – Salaries				\$106,766.73
200	<u>Personnel Services – Employee Benefits</u>			
	210 Group Insurance – Contracted Provider			17,169.24
	220 Social Security Contributions			8,006.21
	230 PSERS Retirement Contributions			37,391.98
	260 Workers' Compensation			530.07
Total Personnel Services – Employee Benefits				\$63,097.50
600	<u>Supplies</u>			
	610 General Supplies			4,854.39
	650 Supplies & Fees – Technology Related			1,834.56
Total Supplies				\$6,688.95
800	<u>Other Objects</u>			
	810 Dues and Fees			2,511.51
Total Other Objects				\$2,511.51
Total 2820 Information Services				\$179,064.69

General Fund (10)

2823 Public Information Services

Elementary Secondary Federal Total

100	<u>Personnel Services – Salaries</u>			
	100 Personnel Services – Salaries			106,766.73
Total Personnel Services – Salaries				\$106,766.73
200	<u>Personnel Services – Employee Benefits</u>			
	210 Group Insurance – Contracted Provider			17,169.24
	220 Social Security Contributions			8,006.21
	230 PSERS Retirement Contributions			37,391.98
	260 Workers' Compensation			530.07
Total Personnel Services – Employee Benefits				\$63,097.50
600	<u>Supplies</u>			
	610 General Supplies			4,854.39
	650 Supplies & Fees – Technology Related			1,834.56
Total Supplies				\$6,688.95
800	<u>Other Objects</u>			
	810 Dues and Fees			2,511.51
Total Other Objects				\$2,511.51
Total 2823 Public Information Services				\$179,064.69

General Fund (10)

2830 Staff Services

	<u>Elementary</u>	<u>Secondary</u>	<u>Federal</u>	<u>Total</u>
100 Personnel Services – Salaries				
100 Personnel Services – Salaries				222,878.64
Total Personnel Services – Salaries				\$222,878.64
200 Personnel Services – Employee Benefits				
210 Group Insurance – Contracted Provider				60,695.24
220 Social Security Contributions				16,865.79
230 PSERS Retirement Contributions				79,510.68
240 Tuition Reimbursement				21,402.00
260 Workers' Compensation				1,127.58
Total Personnel Services – Employee Benefits				\$179,601.29
300 Purchased Professional and Technical Services				
310 Official / Administrative Services				33,051.19
329 Professional Educational Services – Other			209,223.00	543,778.85
340 Technical Services				296.00
Total Purchased Professional and Technical Services			\$209,223.00	\$577,126.04
500 Other Purchased Services				
549 Other Advertising/Public Relations				7,492.81
580 Travel				94.32
Total Other Purchased Services				\$7,587.13
600 Supplies				
610 General Supplies				6,061.54
630 Food				407.55
650 Supplies & Fees – Technology Related				565.00
Total Supplies				\$7,034.09
800 Other Objects				
810 Dues and Fees				10,319.59
890 Miscellaneous Expenditures				530.50
Total Other Objects				\$10,850.09
Total 2830 Staff Services			\$209,223.00	\$1,005,077.28

General Fund (10)

2831 Supervision of Staff Services

Elementary Secondary Federal Total

100	<u>Personnel Services – Salaries</u>			
	100 Personnel Services – Salaries			186,146.67
Total Personnel Services – Salaries				\$186,146.67
200	<u>Personnel Services – Employee Benefits</u>			
	210 Group Insurance – Contracted Provider			35,685.54
	220 Social Security Contributions			14,213.49
	230 PSERS Retirement Contributions			66,569.15
	260 Workers' Compensation			944.07
Total Personnel Services – Employee Benefits				\$117,412.25
500	<u>Other Purchased Services</u>			
	580 Travel			94.32
Total Other Purchased Services				\$94.32
800	<u>Other Objects</u>			
	810 Dues and Fees			3,247.51
Total Other Objects				\$3,247.51
Total 2831 Supervision of Staff Services				\$306,900.75

General Fund (10)

2832 Recruitment and Placement Services

Elementary

Secondary

Federal

Total

300 Purchased Professional and Technical Services

329 Professional Educational Services – Other

209,223.00

543,778.85

340 Technical Services

296.00

Total Purchased Professional and Technical Services

\$209,223.00

\$544,074.85

500 Other Purchased Services

549 Other Advertising/Public Relations

7,492.81

Total Other Purchased Services

\$7,492.81

600 Supplies

610 General Supplies

247.23

630 Food

407.55

Total Supplies

\$654.78

800 Other Objects

810 Dues and Fees

7,072.08

Total Other Objects

\$7,072.08

Total 2832 Recruitment and Placement Services

\$209,223.00

\$559,294.52

General Fund (10)

2833 Staff Accounting Services

	<u>Elementary</u>	<u>Secondary</u>	<u>Federal</u>	<u>Total</u>
100 Personnel Services – Salaries				
100 Personnel Services – Salaries				36,731.97
Total Personnel Services – Salaries				\$36,731.97
200 Personnel Services – Employee Benefits				
210 Group Insurance – Contracted Provider				25,009.70
220 Social Security Contributions				2,652.30
230 PSERS Retirement Contributions				12,941.53
260 Workers' Compensation				183.51
Total Personnel Services – Employee Benefits				\$40,787.04
300 Purchased Professional and Technical Services				
310 Official / Administrative Services				33,051.19
Total Purchased Professional and Technical Services				\$33,051.19
600 Supplies				
610 General Supplies				5,814.31
650 Supplies & Fees – Technology Related				565.00
Total Supplies				\$6,379.31
800 Other Objects				
890 Miscellaneous Expenditures				530.50
Total Other Objects				\$530.50
Total 2833 Staff Accounting Services				\$117,480.01

General Fund (10)

	<u>Elementary</u>	<u>Secondary</u>	<u>Federal</u>	<u>Total</u>
2836 Staff Development Services – Non-Instructional, Non-Certified Staff Only				
200 Personnel Services – Employee Benefits				
240 Tuition Reimbursement				21,402.00
Total Personnel Services – Employee Benefits				\$21,402.00
Total 2836 Staff Development Services – Non-Instructional, Non-Certified Staff Only				\$21,402.00

LEA : 114063003 Governor Mifflin SD

Printed 12/13/2023 3:37:31 PM

General Fund (10)

2900 Other Support Services

Elementary

Secondary

Federal

Total

500 Other Purchased Services

595 IU Payments By Withholding

52,733.39

Total Other Purchased Services

\$52,733.39

Total 2900 Other Support Services

\$52,733.39

General Fund (10)

2910 Support Services Not Listed Elsewhere In the 2000 Series

Elementary

Secondary

Federal

Total

500 Other Purchased Services

595 IU Payments By Withholding

52,733.39

Total Other Purchased Services

\$52,733.39

Total 2910 Support Services Not Listed Elsewhere In the 2000 Series

\$52,733.39

General Fund (10)

3000 Operation of Non-Instructional Services	<u>Total</u>
100 Personnel Services – Salaries	
100 Personnel Services – Salaries	1,066,033.52
Total Personnel Services – Salaries	\$1,066,033.52
200 Personnel Services – Employee Benefits	
210 Group Insurance – Contracted Provider	72,459.88
220 Social Security Contributions	81,335.15
230 PSERS Retirement Contributions	287,610.63
260 Workers’ Compensation	5,269.95
Total Personnel Services – Employee Benefits	\$446,675.61
300 Purchased Professional and Technical Services	
310 Official / Administrative Services	10,100.00
329 Professional Educational Services – Other	4,020.00
330 Other Professional Services	67,375.93
350 Security / Safety Services	10,044.98
Total Purchased Professional and Technical Services	\$91,540.91
400 Purchased Property Services	
440 Rentals	3,342.50
Total Purchased Property Services	\$3,342.50
500 Other Purchased Services	
510 Student Transportation Services	78,703.10
520 Insurance – General	11,386.00
580 Travel	14,620.56
Total Other Purchased Services	\$104,709.66
600 Supplies	
610 General Supplies	81,265.59
Total Supplies	\$81,265.59
800 Other Objects	
810 Dues and Fees	23,122.69
890 Miscellaneous Expenditures	98,426.92
Total Other Objects	\$121,549.61
Total 3000 Operation of Non-Instructional Services	\$1,915,117.40

General Fund (10)

3200 Student Activities

Elementary

Secondary

Federal

Total

100 Personnel Services – Salaries

100 Personnel Services – Salaries 1,013,206.44

Total Personnel Services – Salaries \$1,013,206.44

200 Personnel Services – Employee Benefits

210 Group Insurance – Contracted Provider 72,067.98

220 Social Security Contributions 76,479.06

230 PSERS Retirement Contributions 270,083.23

260 Workers' Compensation 5,032.37

Total Personnel Services – Employee Benefits \$423,662.64

300 Purchased Professional and Technical Services

310 Official / Administrative Services 10,100.00

329 Professional Educational Services – Other 4,020.00

330 Other Professional Services 67,375.93

350 Security / Safety Services 10,044.98

Total Purchased Professional and Technical Services \$91,540.91

400 Purchased Property Services

440 Rentals 3,342.50

Total Purchased Property Services \$3,342.50

500 Other Purchased Services

510 Student Transportation Services 78,703.10

520 Insurance – General 11,386.00

580 Travel 14,620.56

Total Other Purchased Services \$104,709.66

600 Supplies

610 General Supplies 70,086.79

Total Supplies \$70,086.79

800 Other Objects

810 Dues and Fees 23,122.69

890 Miscellaneous Expenditures 3,338.92

Total Other Objects \$26,461.61

Total 3200 Student Activities \$1,733,010.55

General Fund (10)

	<u>Elementary</u>	<u>Secondary</u>	<u>Federal</u>	<u>Total</u>
3300 Community Services				
100 Personnel Services – Salaries				
100 Personnel Services – Salaries				52,827.08
Total Personnel Services – Salaries				\$52,827.08
200 Personnel Services – Employee Benefits				
210 Group Insurance – Contracted Provider				391.90
220 Social Security Contributions				4,856.09
230 PSERS Retirement Contributions				17,527.40
260 Workers' Compensation				237.58
Total Personnel Services – Employee Benefits				\$23,012.97
600 Supplies				
610 General Supplies			6,334.44	11,178.80
Total Supplies			\$6,334.44	\$11,178.80
800 Other Objects				
890 Miscellaneous Expenditures				95,088.00
Total Other Objects				\$95,088.00
Total 3300 Community Services			\$6,334.44	\$182,106.85

General Fund (10)

4000 Facilities Acquisition, Construction and Improvement Services

Total

400 Purchased Property Services

450 Construction Services

2,922,165.35

Total Purchased Property Services

\$2,922,165.35

Total 4000 Facilities Acquisition, Construction and Improvement Services

\$2,922,165.35

General Fund (10)

	<u>Elementary</u>	<u>Secondary</u>	<u>Federal</u>	<u>Total</u>
4600 Existing Building Improvement Services				
400 <u>Purchased Property Services</u>				
450 Construction Services			2,922,165.35	2,922,165.35
Total Purchased Property Services			\$2,922,165.35	\$2,922,165.35
Total 4600 Existing Building Improvement Services			\$2,922,165.35	\$2,922,165.35

General Fund (10)

5000 Other Expenditures and Financing Uses

Total

800 Other Objects

830 Interest	38,711.07
880 Refunds of Prior Years' Receipts	61,308.99

Total Other Objects	\$100,020.06
----------------------------	---------------------

900 Other Uses of Funds

910 Redemption of Principal	694,883.36
932 Capital Reserve Fund Transfers Applicable To Fund 32	3,109,053.43
939 Other Fund Transfers	6,639,713.00

Total Other Uses of Funds	\$10,443,649.79
----------------------------------	------------------------

Total 5000 Other Expenditures and Financing Uses	\$10,543,669.85
---	------------------------

General Fund (10)

5100 Debt Service / Other Expenditures and Financing Uses	<u>Elementary</u>	<u>Secondary</u>	<u>Federal</u>	<u>Total</u>
800 Other Objects				
830 Interest				38,711.07
880 Refunds of Prior Years' Receipts				61,308.99
Total Other Objects				\$100,020.06
900 Other Uses of Funds				
910 Redemption of Principal				694,883.36
Total Other Uses of Funds				\$694,883.36
Total 5100 Debt Service / Other Expenditures and Financing Uses				\$794,903.42

General Fund (10)

	<u>Elementary</u>	<u>Secondary</u>	<u>Federal</u>	<u>Total</u>
5130 Refund of Prior Year Revenues / Receipts				
800 <u>Other Objects</u>				
880 Refunds of Prior Years' Receipts				61,308.99
Total Other Objects				\$61,308.99
Total 5130 Refund of Prior Year Revenues / Receipts				\$61,308.99

General Fund (10)

	<u>Elementary</u>	<u>Secondary</u>	<u>Federal</u>	<u>Total</u>
5140 Leases and Other Right-to-Use Arrangements				
800 Other Objects				
830 Interest				38,711.07
Total Other Objects				\$38,711.07
900 Other Uses of Funds				
910 Redemption of Principal				694,883.36
Total Other Uses of Funds				\$694,883.36
Total 5140 Leases and Other Right-to-Use Arrangements				\$733,594.43

General Fund (10)

5200 Interfund Transfers – Out

Elementary

Secondary

Federal

Total

900 Other Uses of Funds

932 Capital Reserve Fund Transfers Applicable To Fund 32

3,109,053.43

939 Other Fund Transfers

6,639,713.00

Total Other Uses of Funds

\$9,748,766.43

Total 5200 Interfund Transfers – Out

\$9,748,766.43

LEA : 114063003 Governor Mifflin SD

Printed 12/13/2023 3:37:53 PM

General Fund (10)

5230 Capital Projects Fund Transfers

Elementary

Secondary

Federal

Total

900 Other Uses of Funds

932 Capital Reserve Fund Transfers Applicable To Fund 32

3,109,053.43

939 Other Fund Transfers

10,000.00

Total Other Uses of Funds

\$3,119,053.43

Total 5230 Capital Projects Fund Transfers

\$3,119,053.43

General Fund (10)

5240 Debt Service Fund Transfers

Elementary

Secondary

Federal

Total

900 Other Uses of Funds

939 Other Fund Transfers

6,628,213.00

Total Other Uses of Funds

\$6,628,213.00

Total 5240 Debt Service Fund Transfers

\$6,628,213.00

General Fund (10)

	<u>Elementary</u>	<u>Secondary</u>	<u>Federal</u>	<u>Total</u>
5280 Student Activity Custodial Fund Transfers				
900 <u>Other Uses of Funds</u>				
939 Other Fund Transfers				1,500.00
Total Other Uses of Funds				\$1,500.00
Total 5280 Student Activity Custodial Fund Transfers				\$1,500.00

Capital Reserve Fund - § 1431 (32)

2000 Support Services

Total

400 Purchased Property Services

430 Repairs and Maintenance Services

120,133.29

Total Purchased Property Services

\$120,133.29

700 Property

752 Capital Equipment – Original and Additional

212,749.24

756 Capitalized Technology Equipment – Original

514,130.37

762 Capitalized Equipment - Replacement

133,442.45

Total Property

\$860,322.06

Total 2000 Support Services

\$980,455.35

LEA : 114063003 Governor Mifflin SD

Printed 12/13/2023 3:37:35 PM

Capital Reserve Fund - § 1431 (32)

2200 Support Services – Instructional Staff

700 Property

756 Capitalized Technology Equipment – Original

	<u>Elementary</u>	<u>Secondary</u>	<u>Federal</u>	<u>Total</u>
756 Capitalized Technology Equipment – Original	250,895.62	263,234.75		514,130.37
Total Property	\$250,895.62	\$263,234.75		\$514,130.37
Total 2200 Support Services – Instructional Staff	\$250,895.62	\$263,234.75		\$514,130.37

LEA : 114063003 Governor Mifflin SD

Printed 12/13/2023 3:37:35 PM

Capital Reserve Fund - § 1431 (32)

2240 Computer-Assisted Instruction Support Services

	<u>Elementary</u>	<u>Secondary</u>	<u>Federal</u>	<u>Total</u>
700 Property				
756 Capitalized Technology Equipment – Original	250,895.62	263,234.75		514,130.37
Total Property	\$250,895.62	\$263,234.75		\$514,130.37
Total 2240 Computer-Assisted Instruction Support Services	\$250,895.62	\$263,234.75		\$514,130.37

LEA : 114063003 Governor Mifflin SD

Printed 12/13/2023 3:37:35 PM

Capital Reserve Fund - § 1431 (32)

2300 Support Services – Administration

Elementary

Secondary

Federal

Total

700 Property

752 Capital Equipment – Original and Additional

61,865.74

Total Property

\$61,865.74

Total 2300 Support Services – Administration

\$61,865.74

LEA : 114063003 Governor Mifflin SD

Printed 12/13/2023 3:37:35 PM

Capital Reserve Fund - § 1431 (32)

2310 Board Services

Elementary

Secondary

Federal

Total

700 Property

752 Capital Equipment – Original and Additional

61,865.74

Total Property

\$61,865.74

Total 2310 Board Services

\$61,865.74

LEA : 114063003 Governor Mifflin SD

Printed 12/13/2023 3:37:35 PM

Capital Reserve Fund - § 1431 (32)

2600 Operation and Maintenance of Plant Services

Elementary

Secondary

Federal

Total

400 Purchased Property Services

430 Repairs and Maintenance Services

120,133.29

Total Purchased Property Services

\$120,133.29

700 Property

752 Capital Equipment – Original and Additional

150,883.50

762 Capitalized Equipment - Replacement

133,442.45

Total Property

\$284,325.95

Total 2600 Operation and Maintenance of Plant Services

\$404,459.24

LEA : 114063003 Governor Mifflin SD

Printed 12/13/2023 3:37:35 PM

Capital Reserve Fund - § 1431 (32)

2620 Operation of Buildings Services

Elementary

Secondary

Federal

Total

400 Purchased Property Services

430 Repairs and Maintenance Services

120,133.29

Total Purchased Property Services

\$120,133.29

700 Property

752 Capital Equipment – Original and Additional

150,883.50

762 Capitalized Equipment - Replacement

133,442.45

Total Property

\$284,325.95

Total 2620 Operation of Buildings Services

\$404,459.24

LEA : 114063003 Governor Mifflin SD

Printed 12/13/2023 3:37:42 PM

Capital Reserve Fund - § 1431 (32)

3000 Operation of Non-Instructional Services

Total

400 Purchased Property Services

450 Construction Services

119,700.00

Total Purchased Property Services

\$119,700.00

700 Property

752 Capital Equipment – Original and Additional

65,561.55

Total Property

\$65,561.55

Total 3000 Operation of Non-Instructional Services

\$185,261.55

LEA : 114063003 Governor Mifflin SD

Printed 12/13/2023 3:37:42 PM

Capital Reserve Fund - § 1431 (32)

3200 Student Activities

Elementary

Secondary

Federal

Total

400 Purchased Property Services

450 Construction Services

119,700.00

Total Purchased Property Services

\$119,700.00

700 Property

752 Capital Equipment – Original and Additional

65,561.55

Total Property

\$65,561.55

Total 3200 Student Activities

\$185,261.55

Capital Reserve Fund - § 1431 (32)

4000 Facilities Acquisition, Construction and Improvement Services

Total

400 Purchased Property Services

450 Construction Services

166,098.55

Total Purchased Property Services

\$166,098.55

Total 4000 Facilities Acquisition, Construction and Improvement Services

\$166,098.55

LEA : 114063003 Governor Mifflin SD

Printed 12/13/2023 3:37:49 PM

Capital Reserve Fund - § 1431 (32)

4600 Existing Building Improvement Services

Elementary

Secondary

Federal

Total

400 Purchased Property Services

450 Construction Services

166,098.55

Total Purchased Property Services

\$166,098.55

Total 4600 Existing Building Improvement Services

\$166,098.55

LEA : 114063003 Governor Mifflin SD

Printed 12/13/2023 3:37:38 PM

Other Capital Projects Fund (39)

2000 Support Services

700 Property

756 Capitalized Technology Equipment – Original

Total

16,815.35

Total Property

\$16,815.35

Total 2000 Support Services

\$16,815.35

LEA : 114063003 Governor Mifflin SD

Printed 12/13/2023 3:37:38 PM

Other Capital Projects Fund (39)

2200 Support Services – Instructional Staff

Elementary

Secondary

Federal

Total

700 Property

756 Capitalized Technology Equipment – Original

16,815.35

16,815.35

Total Property

\$16,815.35

\$16,815.35

Total 2200 Support Services – Instructional Staff

\$16,815.35

\$16,815.35

Other Capital Projects Fund (39)

2240 Computer-Assisted Instruction Support Services

Elementary

Secondary

Federal

Total

700 Property

756 Capitalized Technology Equipment – Original

16,815.35

16,815.35

Total Property

\$16,815.35

\$16,815.35

Total 2240 Computer-Assisted Instruction Support Services

\$16,815.35

\$16,815.35

LEA : 114063003 Governor Mifflin SD

Printed 12/13/2023 3:37:45 PM

Other Capital Projects Fund (39)

3000 Operation of Non-Instructional Services

Total

600 Supplies

610 General Supplies

42,888.21

Total Supplies

\$42,888.21

Total 3000 Operation of Non-Instructional Services

\$42,888.21

LEA : 114063003 Governor Mifflin SD

Printed 12/13/2023 3:37:45 PM

Other Capital Projects Fund (39)

3200 Student Activities

Elementary

Secondary

Federal

Total

600 Supplies

610 General Supplies

42,888.21

Total Supplies

\$42,888.21

Total 3200 Student Activities

\$42,888.21

Other Capital Projects Fund (39)

4000 Facilities Acquisition, Construction and Improvement Services

Total

300 Purchased Professional and Technical Services

330 Other Professional Services	638,631.44
390 Other Purchased Professional and Technical Services	43,830.13

Total Purchased Professional and Technical Services	\$682,461.57
--	---------------------

400 Purchased Property Services

450 Construction Services	18,797,269.86
490 Other Purchased Property Services	20,540.25

Total Purchased Property Services	\$18,817,810.11
--	------------------------

Total 4000 Facilities Acquisition, Construction and Improvement Services	\$19,500,271.68
---	------------------------

Other Capital Projects Fund (39)

4300 Architecture and Engineering Services / Educational Specifications Development – Original and Additional

Elementary

Secondary

Federal

Total

300 Purchased Professional and Technical Services

330 Other Professional Services

244,431.44

390 Other Purchased Professional and Technical Services

43,830.13

Total Purchased Professional and Technical Services

\$288,261.57

Total 4300 Architecture and Engineering Services / Educational Specifications Development – Original and Additional

\$288,261.57

Other Capital Projects Fund (39)

4500 Building Acquisition and Construction Services – Original and Additional	<u>Elementary</u>	<u>Secondary</u>	<u>Federal</u>	<u>Total</u>
300 Purchased Professional and Technical Services				
330 Other Professional Services				394,200.00
Total Purchased Professional and Technical Services				\$394,200.00
400 Purchased Property Services				
450 Construction Services				17,101,594.98
490 Other Purchased Property Services				20,540.25
Total Purchased Property Services				\$17,122,135.23
Total 4500 Building Acquisition and Construction Services – Original and Additional				\$17,516,335.23

Other Capital Projects Fund (39)

4600 Existing Building Improvement Services

Elementary

Secondary

Federal

Total

400 Purchased Property Services

450 Construction Services

1,695,674.88

Total Purchased Property Services

\$1,695,674.88

Total 4600 Existing Building Improvement Services

\$1,695,674.88

Other Capital Projects Fund (39)

5000 Other Expenditures and Financing Uses

Total

800 Other Objects

830 Interest

979,225.00

Total Other Objects

\$979,225.00

Total 5000 Other Expenditures and Financing Uses

\$979,225.00

Other Capital Projects Fund (39)

5100 Debt Service / Other Expenditures and Financing Uses

Elementary

Secondary

Federal

Total

800 Other Objects

830 Interest

979,225.00

Total Other Objects

\$979,225.00

Total 5100 Debt Service / Other Expenditures and Financing Uses

\$979,225.00

Other Capital Projects Fund (39)

	<u>Elementary</u>	<u>Secondary</u>	<u>Federal</u>	<u>Total</u>
5110 Debt Service				
800 <u>Other Objects</u>				
830 Interest				979,225.00
Total Other Objects				\$979,225.00
Total 5110 Debt Service				\$979,225.00

Debt Service Fund (40)

5000 Other Expenditures and Financing Uses

Total

800 Other Objects

830 Interest 1,771,213.00

Total Other Objects \$1,771,213.00

900 Other Uses of Funds

910 Redemption of Principal 4,857,000.00

Total Other Uses of Funds \$4,857,000.00

Total 5000 Other Expenditures and Financing Uses \$6,628,213.00

Debt Service Fund (40)

5100 Debt Service / Other Expenditures and Financing Uses	<u>Elementary</u>	<u>Secondary</u>	<u>Federal</u>	<u>Total</u>
800 <u>Other Objects</u>				
830 Interest				1,771,213.00
Total Other Objects				\$1,771,213.00
900 <u>Other Uses of Funds</u>				
910 Redemption of Principal				4,857,000.00
Total Other Uses of Funds				\$4,857,000.00
Total 5100 Debt Service / Other Expenditures and Financing Uses				\$6,628,213.00

Debt Service Fund (40)

	<u>Elementary</u>	<u>Secondary</u>	<u>Federal</u>	<u>Total</u>
5110 Debt Service				
800 Other Objects				
830 Interest				1,771,213.00
Total Other Objects				\$1,771,213.00
900 Other Uses of Funds				
910 Redemption of Principal				4,857,000.00
Total Other Uses of Funds				\$4,857,000.00
Total 5110 Debt Service				\$6,628,213.00

	<u>General Fund(10)</u>	<u>Student Sponsored Activity Fund(21)</u>	<u>Public Purpose Trust(27)</u>	<u>Other Compt Approved (28)</u>	<u>Athletic / Activity(29)</u>
1000 Instruction					
1100 Regular Programs - Elementary / Secondary	30,289,469.25				
1200 Special Programs - Elementary / Secondary	13,529,236.82				
1300 Vocational Education	1,515,564.00				
1400 Other Instructional Programs - Elementary / Secondary	507,655.82				
1500 Nonpublic School Programs	22,888.82				
1800 Pre-Kindergarten	395,155.64				
Total Instruction	\$46,259,970.35				
2000 Support Services					
2100 Support Services - Students	2,929,950.02				
2200 Support Services - Instructional Staff	3,373,713.67				
2300 Support Services - Administration	3,633,673.58				
2400 Support Services - Pupil Health	636,320.78				
2500 Support Services - Business	1,094,929.72				
2600 Operation and Maintenance of Plant Services	5,423,496.64				
2700 Student Transportation Services	2,953,853.68				
2800 Support Services - Central	1,671,458.65				
2900 Other Support Services	52,733.39				
Total Support Services	\$21,770,130.13				
3000 Operation of Non-Instructional Services					
3200 Student Activities	1,733,010.55				
3300 Community Services	182,106.85				
Total Operation of Non-Instructional Services	\$1,915,117.40				
4000 Facilities Acquisition, Construction and Improvement Services					
4300 Architecture and Engineering Services / Educational Specifications Development - Original and Additional					
4500 Building Acquisition and Construction Services - Original and Additional					
4600 Existing Building Improvement Services	2,922,165.35				
Total Facilities Acquisition, Construction and Improvement Services	\$2,922,165.35				
5000 Other Expenditures and Financing Uses					
5100 Debt Service / Other Expenditures and Financing Uses	794,903.42				
5200 Interfund Transfers - Out	9,748,766.43				
Total Other Expenditures and Financing Uses	\$10,543,669.85				
TOTAL ACTUAL EXPENDITURES & OTHER FINANCING USES	\$83,411,053.08				

	<u>Capital Reserve (690.1850)(31)</u>	<u>Capital Reserve (1431)(32)</u>	<u>Other Capital Projects Fund(39)</u>	<u>Debt Service(40)</u>	<u>Permanent(90)</u>
1000 Instruction					
1100 Regular Programs - Elementary / Secondary					
1200 Special Programs - Elementary / Secondary					
1300 Vocational Education					
1400 Other Instructional Programs - Elementary / Secondary					
1500 Nonpublic School Programs					
1800 Pre-Kindergarten					
Total Instruction					
2000 Support Services					
2100 Support Services - Students					
2200 Support Services - Instructional Staff		514,130.37	16,815.35		
2300 Support Services - Administration		61,865.74			
2400 Support Services - Pupil Health					
2500 Support Services - Business					
2600 Operation and Maintenance of Plant Services		404,459.24			
2700 Student Transportation Services					
2800 Support Services - Central					
2900 Other Support Services					
Total Support Services		\$980,455.35	\$16,815.35		
3000 Operation of Non-Instructional Services					
3200 Student Activities		185,261.55	42,888.21		
3300 Community Services					
Total Operation of Non-Instructional Services		\$185,261.55	\$42,888.21		
4000 Facilities Acquisition, Construction and Improvement Services					
4300 Architecture and Engineering Services / Educational Specifications Development - Original and Additional			288,261.57		
4500 Building Acquisition and Construction Services - Original and Additional			17,516,335.23		
4600 Existing Building Improvement Services		166,098.55	1,695,674.88		
Total Facilities Acquisition, Construction and Improvement Services		\$166,098.55	\$19,500,271.68		
5000 Other Expenditures and Financing Uses					
5100 Debt Service / Other Expenditures and Financing Uses			979,225.00	6,628,213.00	
5200 Interfund Transfers - Out					
Total Other Expenditures and Financing Uses			\$979,225.00	\$6,628,213.00	
TOTAL ACTUAL EXPENDITURES & OTHER FINANCING USES		\$1,331,815.45	\$20,539,200.24	\$6,628,213.00	

Total

1000 <u>Instruction</u>	
1100 Regular Programs - Elementary / Secondary	30,289,469.25
1200 Special Programs - Elementary / Secondary	13,529,236.82
1300 Vocational Education	1,515,564.00
1400 Other Instructional Programs - Elementary / Secondary	507,655.82
1500 Nonpublic School Programs	22,888.82
1800 Pre-Kindergarten	395,155.64
Total Instruction	\$46,259,970.35
2000 <u>Support Services</u>	
2100 Support Services - Students	2,929,950.02
2200 Support Services - Instructional Staff	3,904,659.39
2300 Support Services - Administration	3,695,539.32
2400 Support Services - Pupil Health	636,320.78
2500 Support Services - Business	1,094,929.72
2600 Operation and Maintenance of Plant Services	5,827,955.88
2700 Student Transportation Services	2,953,853.68
2800 Support Services - Central	1,671,458.65
2900 Other Support Services	52,733.39
Total Support Services	\$22,767,400.83
3000 <u>Operation of Non-Instructional Services</u>	
3200 Student Activities	1,961,160.31
3300 Community Services	182,106.85
Total Operation of Non-Instructional Services	\$2,143,267.16
4000 <u>Facilities Acquisition, Construction and Improvement Services</u>	
4300 Architecture and Engineering Services / Educational Specifications Development - Original and Additional	288,261.57
4500 Building Acquisition and Construction Services - Original and Additional	17,516,335.23
4600 Existing Building Improvement Services	4,783,938.78
Total Facilities Acquisition, Construction and Improvement Services	\$22,588,535.58
5000 <u>Other Expenditures and Financing Uses</u>	
5100 Debt Service / Other Expenditures and Financing Uses	8,402,341.42
5200 Interfund Transfers - Out	9,748,766.43
Total Other Expenditures and Financing Uses	\$18,151,107.85
TOTAL ACTUAL EXPENDITURES & OTHER FINANCING USES	\$111,910,281.77

PSERS Salary Data (Salary Data should relate to the General Fund only)

Amount Description	Amount
Total Salary Base for salaries subject to PSERS withholding	33,007,686.75
Total Federally Funded salaries subject to PSERS withholding	2,002,078.64
	<hr/>

Title I Expenditure Data

Amount Description	Amount
Expenditures Funded with Current Title I Funds	581,006.00
Expenditures Funded with Carry over Title I Funds	
Total Title I Expenditure Data	<hr/> \$581,006.00 <hr/>

Title IV Revenue Data

Amount Description	Amount
Revenue from Title IV-A-1: Student Support and Academic Enrichment Grants	46,622.36
Revenue from Title IV-B: 21st Century Community Learning Centers	
	<hr/>

Title V Revenue Data

Amount Description	Amount
Revenue from Title V-B-2: Rural and Low-Income School Programs	
Revenue from Title V-B-1: Small Rural School Achievement (Directly from the Federal Govt)	
	<hr/>

1.	<u>Current Special Education Expenditures within Function 1000</u> See list of exclusions in the note below.	17,951,416.53
2.	<u>Current Special Education Expenditures within Function 2000</u> See list of exclusions in the note below.	4,482,656.23
2A.	<u>Current Special Education Expenditures within Sub-Function 2100</u> This data should also be included in line 2 above. See list of exclusions in the note below.	583,003.89
2B.	<u>Current Special Education Expenditures within Sub-Function 2200</u> This data should also be included in line 2 above. See list of exclusions in the note below.	831,373.59
2C.	<u>Current Special Education Expenditures within Sub-Function 2700</u> This data should also be included in line 2 above. See list of exclusions in the note below.	1,243,668.12
3.	<u>Current Special Education Expenditures within Sub-Function 3100</u> See list of exclusions in the note below.	428,052.27
4.	<u>Current Special Education Expenditures within Sub-Function 3200</u> See list of exclusions in the note below.	344,835.88

Note: The Current Special Education Expenditure amounts for each line should be calculated as follows:

- * Include the total expenditures for special education costs from all governmental funds and the food service fund 51 for the function/sub-function requested
- * Exclude data from sub-functions: 1243,1450,1500,1600,1807,2280,2450,2750,2990
- * Exclude data from objects: 322,511,512,516,561,562,564,566,592,593,594,595,596,597,700,830,899

Benefits for Staff Relative to Collective Bargaining Agreements

	OBJECT	COVERED	NOT COVERED	TOTAL
10 General Fund	No Self Insurance data to report			
	211 Medical Insurance	5,912,137.66	69,322.68	5,981,460.34
	212 Dental Insurance	272,667.71	3,340.80	276,008.51
	215 Eye Care Insurance			
	216 Prescription Insurance			
	271 Self-Insurance Medical Benefits			
	272 Self-Insurance Dental Benefits			
	275 Self-Insurance Eye Care Benefits			
	276 Self-Insurance Prescription Benefits			
	FUND TOTAL	\$6,184,805.37	\$72,663.48	\$6,257,468.85
50 Enterprise Fund	No Self Insurance data to report			
	211 Medical Insurance	98,457.08		98,457.08
	212 Dental Insurance	7,562.88		7,562.88
	215 Eye Care Insurance			
	216 Prescription Insurance			
	271 Self-Insurance Medical Benefits			
	272 Self-Insurance Dental Benefits			
	275 Self-Insurance Eye Care Benefits			
	276 Self-Insurance Prescription Benefits			
	FUND TOTAL	\$106,019.96		\$106,019.96
60 Internal Service Fund	No Self Insurance data to report			
	211 Medical Insurance			
	212 Dental Insurance			
	215 Eye Care Insurance			
	216 Prescription Insurance			
	271 Self-Insurance Medical Benefits			
	272 Self-Insurance Dental Benefits			
	275 Self-Insurance Eye Care Benefits			
	276 Self-Insurance Prescription Benefits			
	FUND TOTAL			
Total of All Funds		\$6,290,825.33	\$72,663.48	\$6,363,488.81

LEA : 114063003 Governor Mifflin SD

Printed 12/13/2023 3:38:13 PM

Function	Special Education (Prior Year)	Nonspecial Education (Prior Year)	Total (Prior Year)	Special Education (Current Year)	Nonspecial Education (Current Year)	Total (Current Year)
2120 Guidance Services	307,018.40	1,350,560.72	1,657,579.12	338,237.69	1,361,612.94	1,699,850.63
2140 Psychological Services	613,214.72		613,214.72	654,931.15		654,931.15
2150 Speech Pathology and Audiology Services						
2160 Social Work Services	37,710.40	165,886.43	203,596.83	55,266.53	222,481.46	277,747.99
2260 Instruction and Curriculum Development Services	366,967.96	205,330.24	572,298.20	407,134.70	182,476.74	589,611.44
2350 Legal and Accounting Services	76,745.50	103,595.00	180,340.50	69,838.50	101,706.57	171,545.07
2420 Medical Services	1,845.18	8,116.87	9,962.05	934.28	3,761.04	4,695.32
2440 Nursing Services	123,656.73	543,960.62	667,617.35	125,565.05	505,475.91	631,040.96
2700 Student Transportation Services	1,219,019.33	1,565,325.92	2,784,345.25	1,243,668.12	1,710,185.56	2,953,853.68
Total	\$2,746,178.22	\$3,942,775.80	\$6,688,954.02	\$2,895,576.02	\$4,087,700.22	\$6,983,276.24

(PRINCIPAL AMOUNTS ONLY)

GOVERNMENTAL FUNDS/ ACTIVITIES

	Short-Term Borrowing	General Obligation Bonds/Notes	Authority Building Obligations	Leases, Other Right to Use Arrangements	Extended Term Financing Agreements	Other Long Term Debt/Liabilities	OPEB, Comp Abs, Net Pension Liab	Total
1. Debt at Beginning of Fiscal Year		96,960,000.00		1,134,825.00		5,796,997.00	98,009,019.00	201,900,841.00
2. Additional Debt Incurred During Year				851,051.00			15,455,181.00	16,306,232.00
3. Retirements and Repayments		4,857,000.00		718,491.00		244,084.00	14,268,352.00	20,087,927.00
4. Debt at End of Fiscal Year		92,103,000.00		1,267,385.00		5,552,913.00	99,195,848.00	198,119,146.00
5. Accreted Interest at End Of Fiscal Year								
6. Total Debt and Accreted Interest		92,103,000.00		1,267,385.00		5,552,913.00	99,195,848.00	198,119,146.00
7. Current Portion P&I - Due within 1 year		6,444,574.50		648,723.00		244,084.00	188,694.00	7,526,075.50
8. Interest Paid during current fiscal year		2,750,438.00		38,711.07				2,789,149.07

(PRINCIPAL AMOUNTS ONLY)

PROPRIETARY FUNDS

	Short-Term Borrowing	General Obligation Bonds/Notes	Authority Building Obligations	Leases, Other Right to Use Arrangements	Extended Term Financing Agreements	Other Long Term Debt/Liabilities	OPEB, Comp Abs, Net Pension Liab	Total
1. Debt at Beginning of Fiscal Year							1,822,880.00	1,822,880.00
2. Additional Debt Incurred During Year							421,824.00	421,824.00
3. Retirements and Repayments							275,606.00	275,606.00
4. Debt at End of Fiscal Year							1,969,098.00	1,969,098.00
5. Accreted Interest at End Of Fiscal Year								
6. Total Debt and Accreted Interest							1,969,098.00	1,969,098.00
7. Current Portion P&I - Due within 1 year								
8. Interest Paid during current fiscal year								

Total Principal and Interest Payments Made by Your School - All Funds

Function	Fund		Principal (910)	Principal (920)	Interest (830)	Total (Principal +Interest)	Misc Other Uses (990)
5110	10	General Fund					
5110	20	Special Revenue Funds					
5110	30	Capital Projects Funds			979,225.00	979,225.00	
5110	40	Debt Service Fund	4,857,000.00		1,771,213.00	6,628,213.00	
5110	90	Permanent Fund					
5120	10	General Fund					
5120	20	Special Revenue Funds					
5120	30	Capital Projects Funds					
5120	40	Debt Service Fund					
5140	10	General Fund	694,883.36		38,711.07	733,594.43	
5140	20	Special Revenue Funds					
5140	30	Capital Projects Funds					
5140	40	Debt Service Fund					
5140	90	Permanent Fund					
Total Debt Payments - Governmental Funds			\$5,551,883.36		\$2,789,149.07	\$8,341,032.43	

Function	Fund		Principal (910)	Principal (920)	Interest (830)	Total (Principal +Interest)
5110	50	Enterprise Fund				
5110	60	Internal Service Fund				
5120	50	Enterprise Fund				
5120	60	Internal Service Fund				
5140	50	Enterprise Fund				
5140	60	Internal Service Fund				
Total Debt Payments - Proprietary Funds						

Debt Details
Governmental Funds/ Activities

Debt Category	Debt Issue Date (MM/YYYY)	Principal Amounts Only			Debt at End of Fiscal Year	Current Portion Due Within One Year (Principal and Interest)	Interest Paid During Fiscal Year
		Debt at Beginning of Fiscal Year	Additions	Reductions / Repayments			
General Obligation Bonds/Notes – CIB	04/2021	27,740,000.00		5,000.00	27,735,000.00	984,175.00	979,225.00
General Obligation Bonds/Notes – CIB	08/2020	4,645,000.00		3,607,000.00	1,038,000.00	1,046,823.00	39,482.50
General Obligation Bonds/Notes – CIB	07/2020	23,330,000.00		1,240,000.00	22,090,000.00	3,017,514.00	340,618.00
General Obligation Bonds/Notes – CIB	07/2020	14,575,000.00			14,575,000.00	325,137.50	325,137.50
General Obligation Bonds/Notes – CIB	07/2020	26,670,000.00		5,000.00	26,665,000.00	1,070,925.00	1,065,975.00
Leases and Other Right to Use Arrangements		1,134,825.00	851,051.00	718,491.00	1,267,385.00	648,723.00	38,711.07
Other Long Term Debt/Liabilities		5,796,997.00		244,084.00	5,552,913.00	244,084.00	
Compensated Absences		734,164.00	124,683.00	194,609.00	664,238.00	188,694.00	
Other Post-Employment Benefits (OPEB)		10,063,243.00		3,697,148.00	6,366,095.00		
Net Pension Liability		87,211,612.00	15,330,498.00	10,376,595.00	92,165,515.00		
Totals for Debt Entered:		\$201,900,841.00	\$16,306,232.00	\$20,087,927.00	\$198,119,146.00	\$7,526,075.50	\$2,789,149.07

Bond Details
Proprietary Funds

Debt Category	Debt Issue Date (MM/YYYY)	Principal Amounts Only			Debt at End of Fiscal Year	Current Portion Due Within One Year (Principal and Interest)	Interest Paid During Fiscal Year
		Debt at Beginning of Fiscal Year	Additions	Reductions / Repayments			
Other Post-Employment Benefits (OPEB)		269,492.00		75,879.00	193,613.00		
Net Pension Liability		1,553,388.00	421,824.00	199,727.00	1,775,485.00		
Totals for Debt Entered:		\$1,822,880.00	\$421,824.00	\$275,606.00	\$1,969,098.00		

General Fund (10)

Section 1: Tuition/Purchased Services as Reported within Expenditure Detail

	Amount
Tuition Reported in General Fund Expenditures 1000-560	6,346,334.91
Purchased Services in General Fund Expenditures 1000-594 and 1000-597	4,761.15
Section 1 Total	\$6,351,096.06

Section 2: Tuition Paid to Institution Types During Fiscal Year

	Tuition Paid For Nonspecial Education	Tuition Paid For Special Education	Total
1 1306 Institutions			
2 Institutionalized Children's Programs	39,648.00	3,002,914.88	3,042,562.88
3 Juveniles Incarcerated in Adult Facilities	11,300.86		11,300.86
4 Residential Treatment Facilities			
5 Other Local Education Agencies	6,875.68	259,178.64	266,054.32
6 Brick and Mortar Charter Schools			
7 Cyber Charter Schools	603,867.71	607,872.48	1,211,740.19
8 Career and Technology Centers	1,515,564.00	11,186.14	1,526,750.14
9 Approved Private Schools		243,130.34	243,130.34
10 PA Chartered Schools for the Deaf and Blind			
11 Private Residential Rehabilitative Institutions	36,155.51		36,155.51
12 Juvenile Detention Centers	8,640.67		8,640.67
13 Special Program Jointures			
14 Other Tuition Not Included Elsewhere In This Section		4,761.15	4,761.15
Section 2 Total	\$2,222,052.43	\$4,129,043.63	\$6,351,096.06

Food Service / Cafeteria Operations Fund (51)

3000 Operation of Non-Instructional Services

Total

100 Personnel Services – Salaries

100 Personnel Services – Salaries 678,844.52

Total Personnel Services – Salaries \$678,844.52

200 Personnel Services – Employee Benefits

210 Group Insurance – Contracted Provider 110,495.26

220 Social Security Contributions 51,699.22

230 PSERS Retirement Contributions (9,188.63)

260 Workers’ Compensation 3,407.43

280 Other Post-Employment Benefits (OPEB) (158.00)

299 All Other Employee Benefits 4,690.44

Total Personnel Services – Employee Benefits \$160,945.72

300 Purchased Professional and Technical Services

340 Technical Services 3,430.00

Total Purchased Professional and Technical Services \$3,430.00

400 Purchased Property Services

430 Repairs and Maintenance Services 27,555.10

Total Purchased Property Services \$27,555.10

500 Other Purchased Services

580 Travel 495.80

Total Other Purchased Services \$495.80

600 Supplies

610 General Supplies 85,379.07

630 Food 1,193,074.94

Total Supplies \$1,278,454.01

700 Property

740 Depreciation 26,315.76

Total Property \$26,315.76

800 Other Objects

810 Dues and Fees 786.53

890 Miscellaneous Expenditures 2,965.47

Total Other Objects \$3,752.00

Total 3000 Operation of Non-Instructional Services \$2,179,792.91

Food Service / Cafeteria Operations Fund (51)

	<u>Elementary</u>	<u>Secondary</u>	<u>Federal</u>	<u>Total</u>
3100 Food Services				
100 Personnel Services – Salaries				
100 Personnel Services – Salaries				678,844.52
Total Personnel Services – Salaries				\$678,844.52
200 Personnel Services – Employee Benefits				
210 Group Insurance – Contracted Provider				110,495.26
220 Social Security Contributions				51,699.22
230 PSERS Retirement Contributions				(9,188.63)
260 Workers' Compensation				3,407.43
280 Other Post-Employment Benefits (OPEB)				(158.00)
299 All Other Employee Benefits				4,690.44
Total Personnel Services – Employee Benefits				\$160,945.72
300 Purchased Professional and Technical Services				
340 Technical Services				3,430.00
Total Purchased Professional and Technical Services				\$3,430.00
400 Purchased Property Services				
430 Repairs and Maintenance Services				27,555.10
Total Purchased Property Services				\$27,555.10
500 Other Purchased Services				
580 Travel				495.80
Total Other Purchased Services				\$495.80
600 Supplies				
610 General Supplies				85,379.07
630 Food				1,193,074.94
Total Supplies				\$1,278,454.01
700 Property				
740 Depreciation				26,315.76
Total Property				\$26,315.76
800 Other Objects				
810 Dues and Fees				786.53
890 Miscellaneous Expenditures				2,965.47
Total Other Objects				\$3,752.00
Total 3100 Food Services				\$2,179,792.91

Food Service / Cafeteria Operations Fund (51)

5000 Other Expenditures and Financing Uses

Total

900 Other Uses of Funds

939 Other Fund Transfers

10,244.65

Total Other Uses of Funds

\$10,244.65

Total 5000 Other Expenditures and Financing Uses

\$10,244.65

Food Service / Cafeteria Operations Fund (51)

	<u>Elementary</u>	<u>Secondary</u>	<u>Federal</u>	<u>Total</u>
5200 Interfund Transfers – Out				
900 <u>Other Uses of Funds</u>				
939 Other Fund Transfers				10,244.65
Total Other Uses of Funds				\$10,244.65
Total 5200 Interfund Transfers – Out				\$10,244.65

Food Service / Cafeteria Operations Fund (51)

	<u>Elementary</u>	<u>Secondary</u>	<u>Federal</u>	<u>Total</u>
5210 General Fund Transfers				
900 Other Uses of Funds				
939 Other Fund Transfers				10,244.65
Total Other Uses of Funds				\$10,244.65
Total 5210 General Fund Transfers				\$10,244.65

	<u>Food Service(51)</u>	<u>Child Care Operations(52)</u>	<u>Other Enterprise(58)</u>	<u>Internal Service(60)</u>	<u>Total</u>
3000 <u>Operation of Non-Instructional Services</u>					
3100 Food Services	2,179,792.91				2,179,792.91
Total Operation of Non-Instructional Services	\$2,179,792.91				\$2,179,792.91
5000 <u>Other Expenditures and Financing Uses</u>					
5200 Interfund Transfers - Out		10,244.65			10,244.65
Total Other Expenditures and Financing Uses	\$10,244.65				\$10,244.65
TOTAL ACTUAL EXPENDITURES & OTHER FINANCING USES	\$2,190,037.56				\$2,190,037.56

LEA : 114063003 Governor Mifflin SD

Printed 12/13/2023 3:38:28 PM

Fund	School	School Number	Local Personnel	Local Nonpersonnel	State Personnel	State Nonpersonnel	Federal Personnel	Federal Nonpersonnel	Total	Explanation
10	Brecknock El Sch	793	4,343,128.96	756,155.26	1,773,393.56	308,754.56	213,591.41	37,187.08	7,432,210.83	
	Cumru El Sch	794	4,692,327.93	628,155.81	1,915,979.05	256,489.61	230,764.72	30,892.17	7,754,609.29	
	Governor Mifflin MS	801	5,859,359.59	1,017,725.91	2,392,503.34	415,559.52	288,158.35	50,050.90	10,023,357.61	
	Governor Mifflin SHS	802	11,491,658.85	2,246,699.37	4,692,293.04	917,375.98	565,150.06	110,490.77	20,023,668.07	
	Intermediate Sch	6794	5,518,658.66	896,116.12	2,253,387.78	365,903.61	271,402.96	44,070.23	9,349,539.36	
	Mifflin Park El Sch	8096	3,958,693.74	690,178.33	1,616,420.34	281,814.75	194,685.21	33,942.39	6,775,734.76	
Total			35,863,827.73	6,235,030.80	14,643,977.11	2,545,898.03	1,763,752.71	306,633.54	61,359,119.92	

	<u>Nonspecial Education</u>	<u>Special Education</u>
1000 Instruction		
1400 Other Instructional Programs - Elementary / Secondary	11,300.00	
Total Instruction	\$11,300.00	
TOTAL ACTUAL EXPENDITURES & OTHER FINANCING USES	\$11,300.00	

LEA : 114063003 Governor Mifflin SD

Printed 12/13/2023 3:38:33 PM

1000 Instruction

500 Other Purchased Services

561 Tuition To Other School Districts Within the State 11,300.00

Total Other Purchased Services	\$11,300.00
Total 1000 Instruction	\$11,300.00

LEA : 114063003 Governor Mifflin SD

Printed 12/13/2023 3:38:33 PM

1400 Other Instructional Programs - Elementary / Secondary	<u>Nonspecial Education</u>	<u>Special Education</u>
500 <u>Other Purchased Services</u>		
561 Tuition To Other School Districts Within the State	11,300.00	
Total Other Purchased Services	\$11,300.00	
Total 1400 Other Instructional Programs - Elementary / Secondary	\$11,300.00	

LEA : 114063003 Governor Mifflin SD

Printed 12/13/2023 3:38:33 PM

1440 Alternative Regular Education Programs	<u>Nonspecial Education</u>	<u>Special Education</u>
500 <u>Other Purchased Services</u>		
561 Tuition To Other School Districts Within the State	11,300.00	
Total Other Purchased Services	\$11,300.00	
Total 1440 Alternative Regular Education Programs	\$11,300.00	

LEA : 114063003 Governor Mifflin SD

Printed 12/13/2023 3:38:33 PM

1441 Adjudicated / Court-Placed Programs	<u>Nonspecial Education</u>	<u>Special Education</u>
500 Other Purchased Services		
561 Tuition To Other School Districts Within the State	11,300.00	
Total Other Purchased Services	\$11,300.00	
Total 1441 Adjudicated / Court-Placed Programs	\$11,300.00	