

## Contents

Our Schools.....	3
Feeder Patterns .....	5
School Locations.....	6
Elementary School Districts .....	7
Middle School Districts.....	8
High School Districts .....	9
Overview of School Budgets .....	10
Budget Summary by Schools.....	11
Agnor-Hurt Elementary .....	12
Baker-Butler Elementary .....	14
Broadus Wood Elementary .....	16
Brownsville Elementary.....	18
Crozet Elementary .....	20
Greer Elementary.....	22
Hollymead Elementary .....	24
Ivy Elementary School .....	26
Mountain View Elementary .....	28
Murray Elementary.....	30
Red Hill Elementary .....	32
Scottsville Elementary.....	34
Stone-Robinson Elementary .....	36
Stony Point Elementary.....	38
Woodbrook Elementary.....	40
Burley Middle School .....	42
Henley Middle School .....	44
Journey Middle School.....	46
Lakeside Middle School .....	48
Walton Middle School .....	50
Albemarle High School.....	52
Monticello High School.....	54
Western Albemarle High School .....	56
Community Lab School .....	58
Center I.....	60
Post High.....	62
Center for Learning & Growth .....	64



---

Newcomer Learning Community (NLC) .....	65
Other Multi-School Services.....	67

## Our Schools

### ***Elementary Schools (PK-5)***

- Agnor-Hurt
- Baker-Butler
- Broadus Wood
- Brownsville
- Crozet
- Mary C. Greer (Greer)
- Hollymead
- Ivy (K-5 only)
- Mountain View
- Virginia L. Murray (Murray)
- Red Hill
- Scottsville
- Stone-Robinson
- Stony Point
- Woodbrook

### ***Middle Schools (6-8)***

- Jackson P. Burley (Burley)
- Joseph T. Henley (Henley)
- Journey
- Lakeside
- Leslie H. Walton (Walton)

### ***High Schools (9-12)***

- Albemarle (AHS)
- Monticello (MoHS)
- Western Albemarle (WAHS)

### ***Charter School (6-12)***

- Community Lab School

### ***Other Programs***

- Post High
- Center for Learning & Growth
- Newcomer Learning Community
- Center 1

## School Quality Profiles

For every school division and school in the Commonwealth, the Virginia Department of Education provides a School Quality Profile containing information about student achievement, college and career readiness, program completion, school safety, teacher quality, and other topics of interest to parents and the general public. The School Quality Profile for Albemarle County Public Schools, including the division-level profile and profiles for each of our schools, can be accessed online at <https://schoolquality.virginia.gov/divisions/albemarle-county-public-schools>.

## SMART Goals

Albemarle County Public Schools has one overarching goal: “Working together as a team, we will end the predictive value of race, class, gender, and special capacities for our children’s success through high-quality teaching and learning for all. We seek to build relationships with families and communities to ensure that every student succeeds.” In order to meet this goal, the division works with each school to develop SMART goals that are used as benchmarks to monitor our students’ and staff’s work toward our mission. A SMART goal incorporates several criteria to help guide measurements of success: Specific, Measurable, Attainable, Realistic, and Timely.

For the 2023-24 school year, ACPS developed the following SMART goals for each school:

- As measured by end of year SOL tests, every enrollment group in the school will meet state accreditation targets or reduce the previous failure rate by 10% in all tested subjects.
- We will foster a positive school climate for students and staff as demonstrated through high levels of engagement on the Gallup survey (staff) and the Panorama survey (students and families).

Our Office of Strategic Planning, Accountability & Research, and Program Evaluation then works with each school location to create a Strategic Improvement Plan that administration and staff will use to meet these goals. For more information on these plans, please visit our website at [k12albemarle.org/sip](http://k12albemarle.org/sip).



## Feeder Patterns

Due to the large geographic size of Albemarle County, our schools are divided into three “feeder patterns” according to geographical area: Northern, Southern and Western. A feeder pattern consists of the elementary, middle, and high schools through which students progress.

	Northern	Southern	Western
<b>Elementary Schools</b>	Agnor-Hurt* Baker-Butler Broadus Wood Greer Hollymead Stony Point* Woodbrook	Mountain View* Red Hill Scottsville Stone-Robinson* Stony Point*	Brownsville Crozet Ivy Murray
<b>Middle Schools</b>	Burley** Journey Lakeside	Burley** Walton	Henley
<b>High Schools</b>	Albemarle	Monticello	Western Albemarle

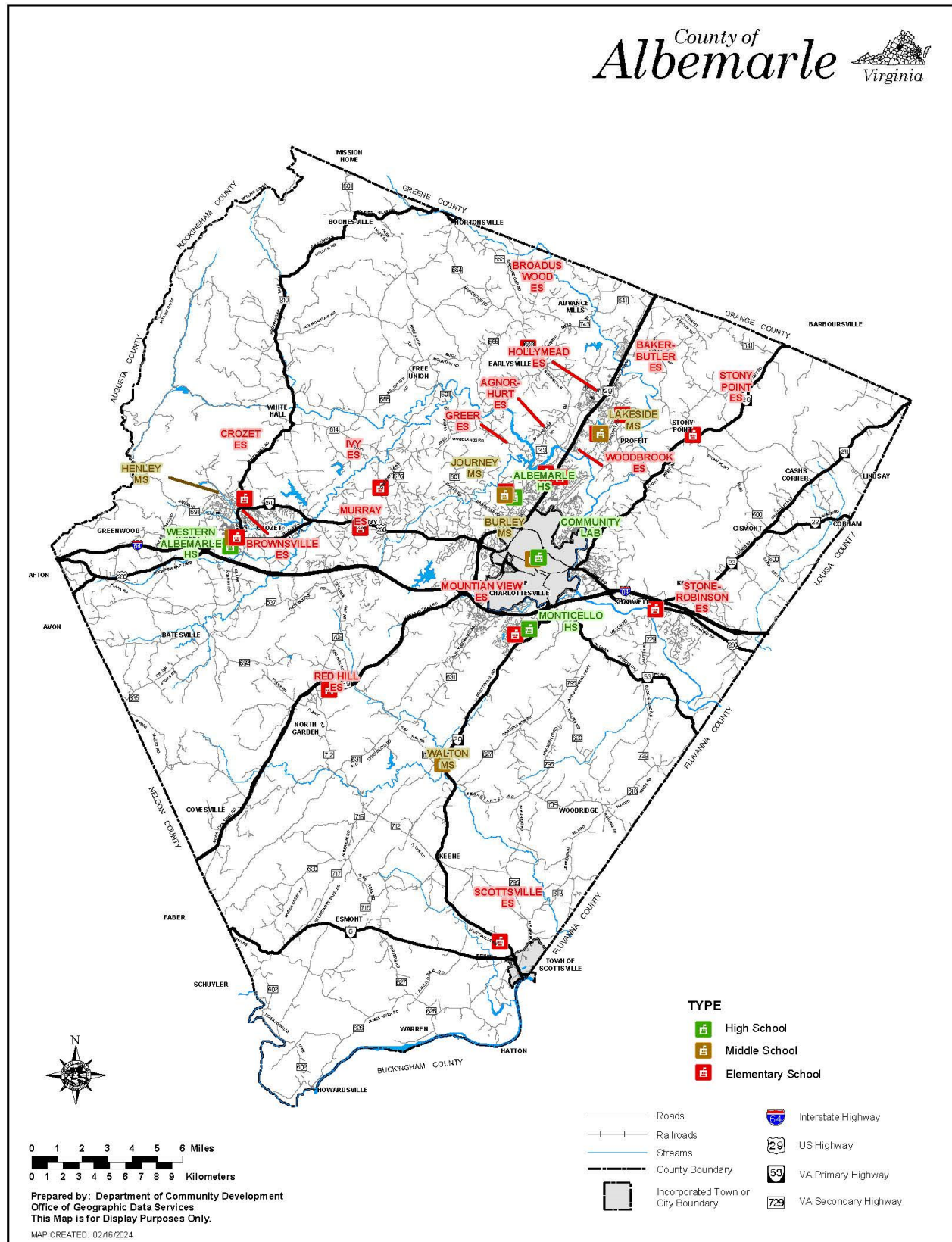
*\*Student body splits at the middle school level:*

- *Agnor-Hurt Elementary School students will continue to either Burley or Journey Middle School and then Albemarle High School.*
- *Stony Point Elementary School students will continue to either Burley Middle School and then Monticello High School, or Lakeside Middle School followed by Albemarle High School.*
- *Mountain View and Stone-Robinson Elementary School students will continue to either Burley or Walton Middle School and then Monticello High School.*

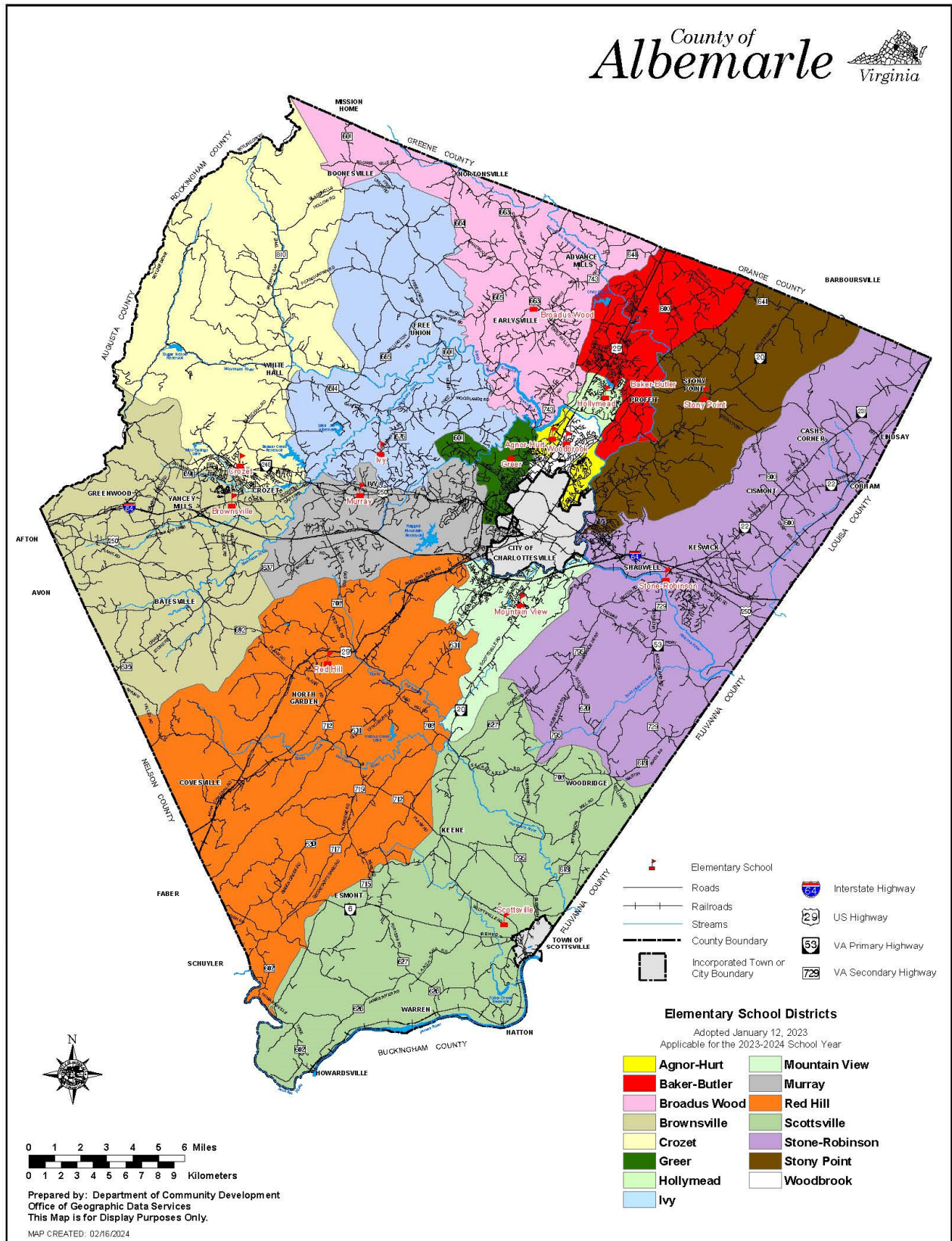
*\*\*Student body splits at the high school level:*

- *Burley Middle School students will attend either Albemarle or Monticello High School.*

## School Locations

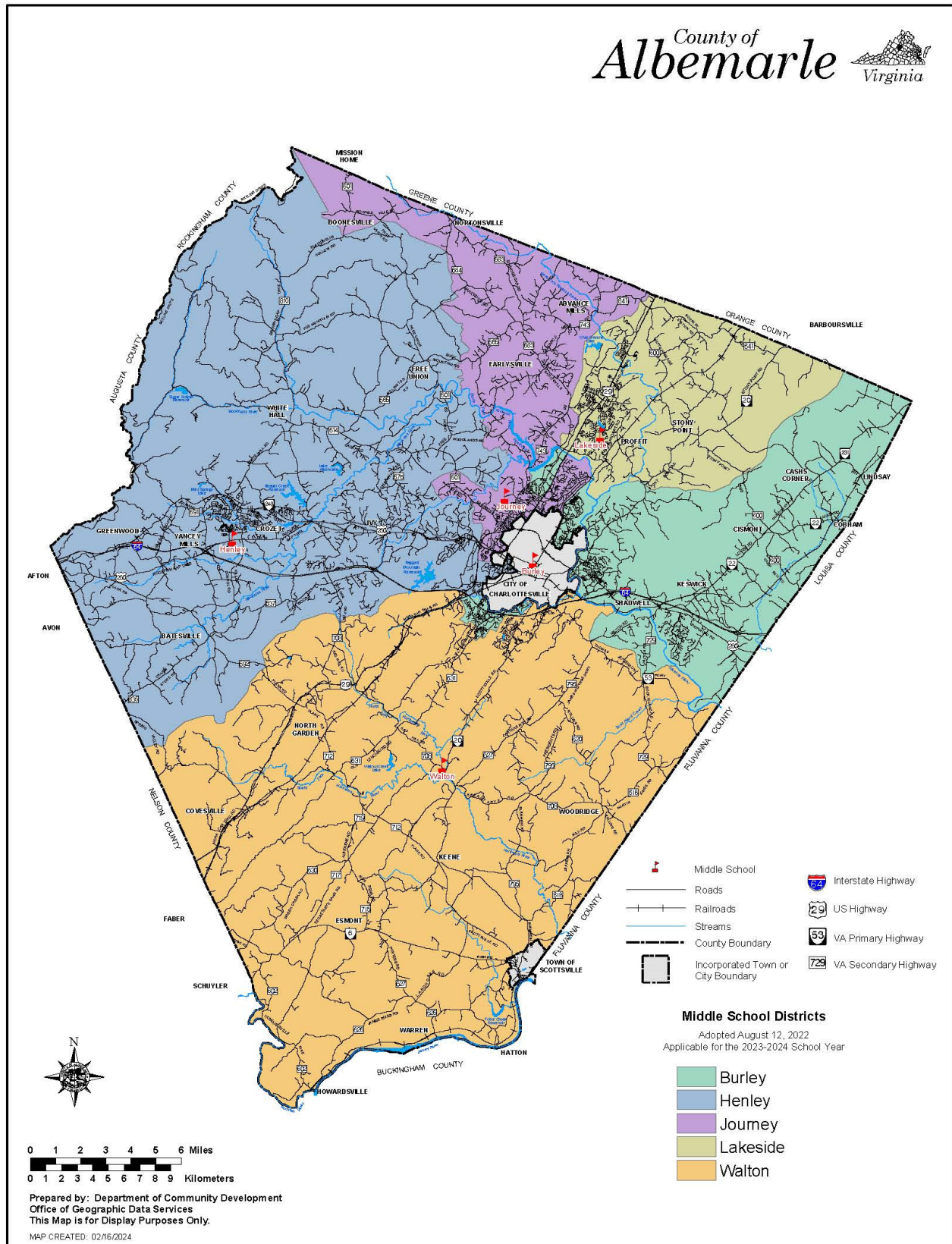


## Elementary School Districts

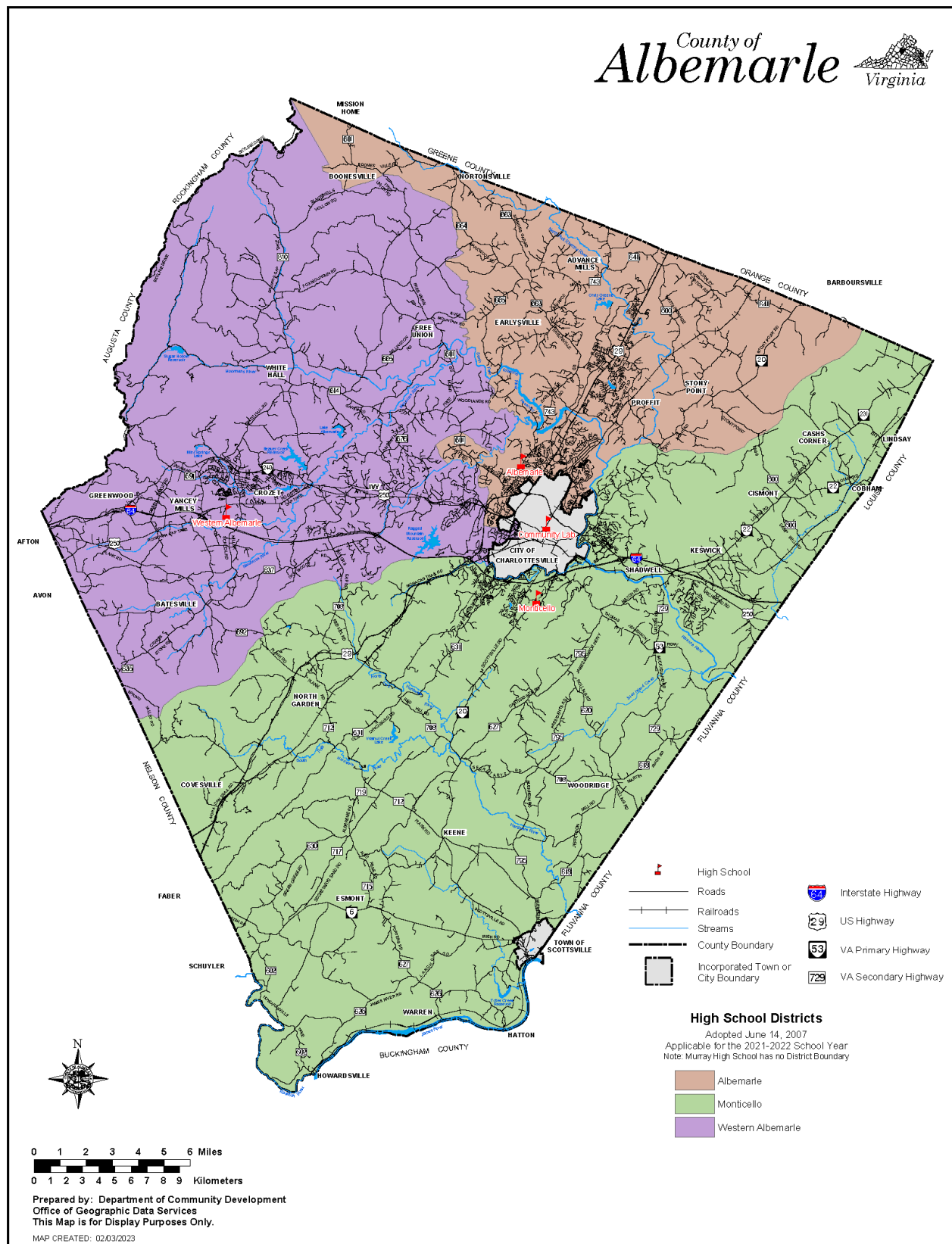




## Middle School Districts



## High School Districts



## Overview of School Budgets

School budgets are primarily driven by and developed based on projected student enrollment and demographics. Most budgeted funds can be attributed to staff compensation. Schools are provided staffing resources based on the Division's staffing standards and formulas. The remaining budget is allocated for general operations and determined by various factors, including student enrollment and demographics. Section G contains detailed information about these budget factors and allocations.

### **FY 2024/25 Changes**

Changes in School Budgets are described in Section A and include:

#### Baseline Adjustment

Baseline and Technical Adjustments  
Mid-year Compensation Changes

#### Technical and Non-Discretionary

Health Care  
VRS Retirement  
Contractual  
Budgeted Enrollment Decrease

#### Proposals

3% Market Increase  
English Learner Growth  
Special Education Growth  
Social Emotional Supports  
Intervention Services



## Budget Summary by Schools

School Type	20-21 Actuals	21-22 Actuals	22-23 Actuals	23-24 Adopted	23-24 FTE	24-25 Request	24-25 FTE	Increase	% Increase
<b>Elementary Schools</b>	<b>\$62,758,326</b>	<b>\$69,040,234</b>	<b>\$73,824,387</b>	<b>\$82,872,061</b>	<b>1,003.78</b>	<b>\$87,768,446</b>	<b>1,006.41</b>	<b>\$4,896,385</b>	<b>5.9%</b>
Agnor-Hurt	\$4,754,199	\$5,058,613	\$5,333,174	\$5,569,770	67.52	\$6,260,004	72.00	\$690,234	12.4%
Baker-Butler	\$6,236,089	\$6,828,950	\$7,411,646	\$8,908,690	108.47	\$9,288,109	108.12	\$379,419	4.3%
Broadus Wood	\$2,821,758	\$3,217,846	\$3,831,968	\$4,137,644	52.26	\$4,429,554	52.14	\$291,910	7.1%
Brownsville	\$6,775,456	\$7,470,249	\$6,178,159	\$6,716,286	81.89	\$6,918,464	81.60	\$202,178	3.0%
Crozet	\$3,120,415	\$3,431,675	\$5,175,981	\$5,843,066	66.67	\$6,138,007	69.14	\$294,941	5.0%
Greer	\$5,366,192	\$5,721,895	\$5,849,285	\$6,968,645	84.86	\$7,693,006	88.79	\$724,361	10.4%
Hollymead	\$3,966,983	\$4,155,807	\$4,069,021	\$4,847,470	61.83	\$5,304,916	63.34	\$457,446	9.4%
Ivy	\$3,214,351	\$3,540,188	\$3,656,402	\$3,860,256	43.78	\$4,278,427	45.61	\$418,171	10.8%
Mountain View	\$7,025,635	\$7,980,789	\$8,484,713	\$9,626,330	116.23	\$10,066,698	116.00	\$440,368	4.6%
Murray	\$2,758,647	\$3,130,111	\$3,459,028	\$3,815,982	47.91	\$4,046,021	45.53	\$230,039	6.0%
Red Hill	\$2,024,374	\$2,147,512	\$2,509,343	\$2,828,430	32.36	\$3,150,153	33.35	\$321,723	11.4%
Scottsville	\$2,280,630	\$2,598,491	\$2,977,887	\$3,003,833	35.49	\$3,236,349	35.25	\$232,516	7.7%
Stone-Robinson	\$4,785,431	\$5,104,206	\$5,537,767	\$5,773,061	72.67	\$6,183,454	74.38	\$410,393	7.1%
Stony Point	\$2,372,613	\$2,510,408	\$2,772,076	\$2,972,499	36.10	\$3,118,162	35.82	\$145,663	4.9%
Woodbrook	\$5,255,555	\$6,143,495	\$6,577,937	\$8,000,099	95.74	\$7,657,122	85.34	(\$342,977)	-4.3%
<b>Middle Schools</b>	<b>\$29,131,285</b>	<b>\$32,220,308</b>	<b>\$32,814,800</b>	<b>\$34,469,096</b>	<b>389.75</b>	<b>\$37,028,079</b>	<b>400.40</b>	<b>\$2,558,983</b>	<b>7.4%</b>
Burley	\$6,172,446	\$6,595,577	\$6,681,685	\$6,844,291	76.88	\$7,333,984	80.06	\$489,693	7.2%
Henley	\$7,155,003	\$7,893,537	\$7,818,828	\$8,244,235	94.70	\$8,950,666	97.42	\$706,431	8.6%
Journey	\$6,379,652	\$7,312,181	\$7,180,670	\$7,933,933	88.15	\$8,519,395	89.60	\$585,462	7.4%
Lakeside	\$5,056,625	\$5,588,529	\$5,727,040	\$6,020,033	68.62	\$6,431,801	70.11	\$411,768	6.8%
Walton	\$4,367,559	\$4,830,484	\$5,406,577	\$5,426,604	61.40	\$5,792,233	63.21	\$365,629	6.7%
<b>High Schools</b>	<b>\$38,574,693</b>	<b>\$42,774,029</b>	<b>\$48,706,276</b>	<b>\$50,718,665</b>	<b>532.36</b>	<b>\$53,546,339</b>	<b>539.70</b>	<b>\$2,827,674</b>	<b>5.6%</b>
Albemarle	\$16,540,034	\$18,028,732	\$19,936,735	\$22,046,827	230.12	\$23,100,874	229.95	\$1,054,047	4.8%
Monticello	\$11,233,902	\$12,429,882	\$14,198,406	\$14,309,382	151.06	\$15,245,849	155.46	\$936,467	6.5%
Western Albemarle	\$10,283,586	\$11,541,903	\$12,749,535	\$12,986,349	136.52	\$13,828,832	140.30	\$842,483	6.5%
Center I	\$517,171	\$773,512	\$1,821,600	\$1,376,107	14.66	\$1,370,784	13.99	(\$5,323)	-0.4%
<b>Community Lab School</b>	<b>\$2,384,459</b>	<b>\$2,704,257</b>	<b>\$2,648,065</b>	<b>\$3,064,911</b>	<b>32.21</b>	<b>\$3,173,411</b>	<b>32.11</b>	<b>\$108,500</b>	<b>3.5%</b>
<b>Newcomer Learning Community</b>						<b>\$461,186</b>	<b>4.50</b>	<b>\$461,186</b>	
<b>CATEC</b>	<b>\$1,773,175</b>	<b>\$2,230,972</b>	<b>\$204,143</b>	<b>\$2,604,023</b>	<b>5.00</b>			<b>(\$2,604,023)</b>	
<b>Post High</b>	<b>\$419,416</b>	<b>\$483,620</b>	<b>\$555,437</b>	<b>\$714,490</b>	<b>12.00</b>	<b>\$846,668</b>	<b>13.00</b>	<b>\$132,178</b>	<b>18.5%</b>
<b>Center For Learning &amp; Growth</b>	<b>\$196,923</b>	<b>\$387,448</b>	<b>\$325,926</b>	<b>\$407,513</b>	<b>4.34</b>	<b>\$498,368</b>	<b>5.59</b>	<b>\$90,855</b>	<b>22.3%</b>
<b>Multi-School Services</b>	<b>\$6,370,722</b>	<b>\$7,690,279</b>	<b>\$8,712,359</b>	<b>\$12,402,005</b>	<b>120.81</b>	<b>\$14,572,887</b>	<b>145.57</b>	<b>\$2,170,882</b>	<b>17.5%</b>
<b>Total</b>	<b>\$141,609,000</b>	<b>\$157,531,147</b>	<b>\$167,791,393</b>	<b>\$187,252,764</b>	<b>2,100.25</b>	<b>\$197,895,384</b>	<b>2,147.28</b>	<b>\$10,642,620</b>	<b>5.7%</b>

# AGNOR-HURT ELEMENTARY SCHOOL

*Home of the Alligators*

## Agnor-Hurt Elementary

### General School Information

- Grades Served: PK-5
- Address: 3201 Berkmar Drive, Charlottesville, VA 22901
- Phone: 434-973-5211
- Principal: Michael Irani

Agnor-Hurt provides a safe and trusting learning environment that embraces diversity and our community's rich cultural demographics. We are committed to empowering students to be creative lifelong learners and productive global citizens through relationships, compassion, and perseverance. As 21st century learners, students will develop into individuals who can adapt, create, collaborate, succeed, and meet the challenges of a constantly evolving world.



**Michael Irani**  
Principal  
2021-Present



### School Quality Profile

For the 2022-23 school year, Agnor-Hurt received a full accreditation status. To view Agnor-Hurt's full School Quality Profile, scan the QR code to the left or visit the [VDOE Agnor-Hurt Elementary School Quality Profile](#) web page.

### Student Enrollment

#### Historical Fall Membership<sup>^</sup>

	2021-2022	2022-2023	2023-2024
Total Enrollment	452	438	474
Students with Disabilities	11.1%	12.8%	12.9%
English Learners	25.7%	26.3%	23.0%
Economically Disadvantaged	50.2%	46.3%	44.1%

#### Projections for FY 25 Budget<sup>1</sup>

	Projected
Total Enrollment	402
K-5 Enrollment	402
Pre-School Enrollment	0
Economically Disadvantaged	52.7%



### Facility Information

- Built in 1992
- 80,956 square feet
- 19.5-acre site

*Agnor-Hurt Elementary School is part of the **Northern Feeder Pattern**. Students continue to either Burley or Journey Middle School and will graduate from Albemarle High School.*

<sup>^</sup> Excludes students who are served in placements outside of ACPS. Does not include MACAA Head Start preschool enrollment.

<sup>1</sup> Assumes no pre-school enrollment until Redistricting Recommendations are approved.



# AGNOR-HURT ELEMENTARY SCHOOL

## Home of the Alligators

### Agnor-Hurt

Expense	20-21 Actuals	21-22 Actuals	22-23 Actuals	23-24 Adopted	24-25 Request	Increase	% Increase
Salary	\$3,150,680	\$3,451,451	\$3,564,814	\$3,834,909	\$4,340,947	\$506,038	13.2%
Other Wages	\$229,157	\$201,070	\$278,078	\$101,101	\$85,397	(\$15,704)	-15.5%
Benefits	\$1,298,663	\$1,300,673	\$1,410,691	\$1,552,039	\$1,739,899	\$187,860	12.1%
Operations	\$75,699	\$105,418	\$79,590	\$81,721	\$93,761	\$12,040	14.7%
<b>Total</b>	<b>\$4,754,199</b>	<b>\$5,058,613</b>	<b>\$5,333,174</b>	<b>\$5,569,770</b>	<b>\$6,260,004</b>	<b>\$690,234</b>	<b>12.4%</b>

State Category Report	20-21 Actuals	21-22 Actuals	22-23 Actuals	23-24 Adopted	24-25 Request	Increase	% Increase
Instruction	\$4,407,715	\$4,712,547	\$4,958,650	\$5,151,939	\$5,652,334	\$500,395	9.7%
Admin/Attend&Health	\$63,123	\$78,032	\$83,376	\$82,376	\$187,235	\$104,859	127.3%
Technology	\$78,170	\$78,277	\$109,789	\$99,251	\$138,902	\$39,651	40.0%
Building Services	\$205,191	\$189,758	\$180,948	\$236,204	\$281,533	\$45,329	19.2%
Transportation			\$410				
<b>Total</b>	<b>\$4,754,199</b>	<b>\$5,058,613</b>	<b>\$5,333,174</b>	<b>\$5,569,770</b>	<b>\$6,260,004</b>	<b>\$690,234</b>	<b>12.4%</b>

### FTE Summary

	23-24 FTE	24-25 FTE
<b>Instruction</b>	<b>60.82</b>	<b>64.04</b>
Assistant Principal	1.00	1.00
Clerical	2.00	2.00
Principal	1.00	1.00
Teacher^	39.40	42.06
Teaching Assistant	17.42	17.98
<b>Admin/Attend&amp;Health</b>	<b>1.00</b>	<b>2.00</b>
Health Clinician		1.00
Nurse	1.00	1.00
<b>Technology</b>	<b>1.20</b>	<b>1.46</b>
Other Technical	0.60	0.80
Teacher^	0.60	0.66
<b>Building Services</b>	<b>4.50</b>	<b>4.50</b>
Custodial	4.50	4.50
<b>Total</b>	<b>67.52</b>	<b>72.00</b>

Adjusted FTE^^	58.8	63.0
----------------	------	------

^Positions included within the Teacher category are detailed in Section G – Staffing Allocations.

^^ Teaching Assistants (TAs) are allocated at a 2 TA to 1 Teacher ratio. This adjusted number is the FTE allocation to the school.

# BAKER-BUTLER ELEMENTARY SCHOOL

*Home of the Bears*

## Baker-Butler Elementary

### General School Information

- Grades Served: PK-5
- Address: 2740 Proffit Road, Charlottesville, VA 22911
- Phone: 434-974-7777
- Principal: Brad Handrich

Baker-Butler Elementary School strives to reach and to challenge every student, every day. Our mission is to build a strong community of students, teachers, parents, and community partners and to prepare our students to be lifelong learners. Our goal is for our students to be designers, thinkers and leaders who can be flexible and creative problem solvers. We support students across all traditional academic subjects, as well as in the arts, music, and physical fitness.



**Brad Handrich**  
Principal  
2023-Present



### School Quality Profile

For the 2022-23 school year, Baker-Butler received a full accreditation status. For the full School Quality Profile, scan the QR code to the left or visit the [VDOE Baker-Butler Elementary School Quality Profile](#) web page.

### Student Enrollment

#### Historical Fall Membership<sup>^</sup>

	2021-2022	2022-2023	2023-2024
Total Enrollment	681	740	735
Students with Disabilities	11.7%	13.0%	12.7%
English Learners	14.0%	14.9%	15.8%
Economically Disadvantaged	23.8%	28.4%	28.8%

#### Projections for FY 25 Budget

	Projected
Total Enrollment	762
K-5 Enrollment	750
Pre-School Enrollment	12
Economically Disadvantaged	25.5%



### Facility Information

- Built in 2002
- 91,576 square feet
- 55.0-acre site

*Baker-Butler Elementary School is part of the **Northern Feeder Pattern**. Students continue to Lakeside Middle School and will graduate from Albemarle High School.*

<sup>^</sup> Excludes students who are served in placements outside of ACPS. Does not include MACAA Head Start preschool enrollment.  
School Locations: D-14

# BAKER-BUTLER ELEMENTARY SCHOOL

## Home of the Bears

### Baker-Butler

Expense	20-21 Actuals	21-22 Actuals	22-23 Actuals	23-24 Adopted	24-25 Request	Increase	% Increase
Salary	\$4,254,282	\$4,710,822	\$4,957,382	\$6,098,606	\$6,416,846	\$318,240	5.2%
Other Wages	\$192,349	\$223,397	\$277,557	\$207,565	\$163,489	(\$44,076)	-21.2%
Benefits	\$1,671,235	\$1,797,149	\$1,993,157	\$2,483,151	\$2,586,441	\$103,290	4.2%
Operations	\$118,223	\$97,581	\$183,551	\$119,368	\$121,333	\$1,965	1.6%
<b>Total</b>	<b>\$6,236,089</b>	<b>\$6,828,950</b>	<b>\$7,411,646</b>	<b>\$8,908,690</b>	<b>\$9,288,109</b>	<b>\$379,419</b>	<b>4.3%</b>

State Category Report	20-21 Actuals	21-22 Actuals	22-23 Actuals	23-24 Adopted	24-25 Request	Increase	% Increase
Instruction	\$5,903,999	\$6,404,251	\$6,957,707	\$8,420,333	\$8,605,922	\$185,589	2.2%
Admin/Attend&Health	\$30,846	\$64,188	\$73,476	\$61,672	\$180,998	\$119,326	193.5%
Technology	\$81,663	\$92,755	(\$28)	\$121,244	\$179,437	\$58,193	48.0%
Building Services	\$219,580	\$267,756	\$379,768	\$305,441	\$321,752	\$16,311	5.3%
Transportation			\$724				
<b>Total</b>	<b>\$6,236,089</b>	<b>\$6,828,950</b>	<b>\$7,411,646</b>	<b>\$8,908,690</b>	<b>\$9,288,109</b>	<b>\$379,419</b>	<b>4.3%</b>

FTE Summary	23-24 FTE	24-25 FTE
<b>Instruction</b>	<b>100.92</b>	<b>99.32</b>
Assistant Principal	2.00	2.00
Clerical	3.00	3.00
Principal	1.00	1.00
Teacher^	65.64	64.60
Teaching Assistant	29.28	28.72
<b>Admin/Attend&amp;Health</b>	<b>1.00</b>	<b>2.00</b>
Health Clinician		1.00
Nurse	1.00	1.00
<b>Technology</b>	<b>1.30</b>	<b>1.80</b>
Other Technical	0.70	0.80
Teacher^	0.60	1.00
<b>Building Services</b>	<b>5.25</b>	<b>5.00</b>
Custodial	5.25	5.00
<b>Total</b>	<b>108.47</b>	<b>108.12</b>

Adjusted FTE^^	93.8	93.8
----------------	------	------

^Positions included within the Teacher category are detailed in Section G – Staffing Allocations.

^^ Teaching Assistants (TAs) are allocated at a 2 TA to 1 Teacher ratio. This adjusted number is the FTE allocation to the school.



# BROADUS WOOD ELEMENTARY SCHOOL

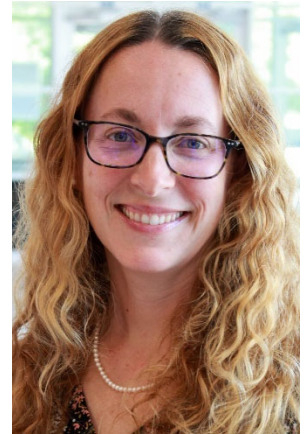
*Home of the Bobcats*

## Broadus Wood Elementary

### General School Information

- Grades Served: PK-5
- Address: 185 Buck Mountain Road, Earlysville, VA 22936
- Phone: 434-973-3865
- Principal: Amy Morris

At Broadus Wood Elementary School, educators and parents work together to foster a dynamic learning community that promotes academic excellence, character development, and lifelong-learning skills. We believe our work empowers students to thrive as well-rounded, productive citizens who will be positioned to succeed well beyond elementary school. Students here develop a love of learning; learn to work collaboratively and independently; and demonstrate respect for and appreciation of others.



**Amy Morris**  
Principal  
2016-Present



### School Quality Profile

For the 2022-23 school year, Broadus Wood received a full accreditation status. For the full School Quality Profile, scan the QR code to the left or visit [the VDOE Broadus Wood Elementary School Quality Profile](#) web page.

### Student Enrollment

#### Historical Fall Membership<sup>^</sup>

	2021-2022	2022-2023	2023-2024
Total Enrollment	259	286	284
Students with Disabilities	12.7%	13.3%	14.8%
English Learners	1.9%	4.9%	4.2%
Economically Disadvantaged	16.6%	19.9%	18.0%

#### Projections for FY 25 Budget

	Projected
Total Enrollment	279
K-5 Enrollment	261
Pre-School Enrollment	18
Economically Disadvantaged	17.1%



### Facility Information

- Built in 1936
- 49,852 square feet
- 11.7-acre site

*Broadus Wood Elementary School is part of the **Northern Feeder Pattern**. Students continue to Journey Middle School and will graduate from Albemarle High School.*

<sup>^</sup> Excludes students who are served in placements outside of ACPS. Does not include MACAA Head Start preschool enrollment.  
School Locations: D-16

# BROADUS WOOD ELEMENTARY SCHOOL

## Home of the Bobcats

### Broadus Wood

Expense	20-21 Actuals	21-22 Actuals	22-23 Actuals	23-24 Adopted	24-25 Request	Increase	% Increase
Salary	\$1,885,522	\$2,152,919	\$2,553,735	\$2,867,248	\$3,032,921	\$165,673	5.8%
Other Wages	\$92,991	\$129,619	\$198,970	\$65,647	\$76,624	\$10,977	16.7%
Benefits	\$804,171	\$885,888	\$1,025,041	\$1,138,542	\$1,253,415	\$114,873	10.1%
Operations	\$39,074	\$49,419	\$54,222	\$66,207	\$66,594	\$387	0.6%
<b>Total</b>	<b>\$2,821,758</b>	<b>\$3,217,846</b>	<b>\$3,831,968</b>	<b>\$4,137,644</b>	<b>\$4,429,554</b>	<b>\$291,910</b>	<b>7.1%</b>

State Category Report	20-21 Actuals	21-22 Actuals	22-23 Actuals	23-24 Adopted	24-25 Request	Increase	% Increase
Instruction	\$2,602,393	\$2,954,560	\$3,576,984	\$3,850,589	\$3,994,535	\$143,946	3.7%
Admin/Attend&Health	\$53,985	\$67,546	\$78,744	\$65,578	\$202,069	\$136,491	208.1%
Technology	\$56,314	\$51,139	\$54,647	\$56,980	\$50,752	(\$6,228)	-10.9%
Building Services	\$109,066	\$144,602	\$121,448	\$164,497	\$181,948	\$17,451	10.6%
Transportation			\$145		\$250	\$250	
<b>Total</b>	<b>\$2,821,758</b>	<b>\$3,217,846</b>	<b>\$3,831,968</b>	<b>\$4,137,644</b>	<b>\$4,429,554</b>	<b>\$291,910</b>	<b>7.1%</b>

FTE Summary	23-24 FTE	24-25 FTE
<b>Instruction</b>	<b>47.53</b>	<b>46.60</b>
Assistant Principal	1.00	1.00
Clerical	2.00	2.00
Principal	1.00	1.00
Teacher^	27.24	26.30
Teaching Assistant	16.29	16.30
<b>Admin/Attend&amp;Health</b>	<b>1.00</b>	<b>2.00</b>
Health Clinician		1.00
Nurse	1.00	1.00
<b>Technology</b>	<b>0.73</b>	<b>0.54</b>
Other Technical	0.40	0.20
Teacher^	0.33	0.34
<b>Building Services</b>	<b>3.00</b>	<b>3.00</b>
Custodial	3.00	3.00
<b>Total</b>	<b>52.26</b>	<b>52.14</b>

Adjusted FTE^^	44.1	44.0
----------------	------	------

^Positions included within the Teacher category are detailed in Section G – Staffing Allocations.

^^ Teaching Assistants (TAs) are allocated at a 2 TA to 1 Teacher ratio. This adjusted number is the FTE allocation to the school.

# BROWNSVILLE ELEMENTARY SCHOOL

*Home of the Bees*

## Brownsville Elementary

### General School Information

- Grades Served: PK-5
- Address: 5870 Rockfish Gap Turnpike, Crozet, VA 22932
- Phone: 434-823-4658
- Principal: Jim Kyner

It is our goal to see that each child in our care masters the skills, habits, attitudes, and knowledge necessary to become a lifelong learner and contributing member of society. We recognize that our school is part of our larger community, and we welcome an active and collaborative partnership with our families and the community. Brownsville is a Responsive Classroom school providing engaging instruction that can be observed through continuous improvement, student leadership opportunities and effective learning partnerships.



**Jim Kyner**  
Principal  
2023-Present



### School Quality Profile

For the 2022-23 school year, Brownsville received a full accreditation status. For the full School Quality Profile, scan the QR code to the left or visit the [VDOE Brownsville Elementary School Quality Profile](#) web page.

### Student Enrollment

#### Historical Fall Membership<sup>^</sup>

	2021-2022	2022-2023	2023-2024
Total Enrollment	756	591	572
Students with Disabilities	9.7%	11.7%	12.1%
English Learners	1.5%	2.2%	2.4%
Economically Disadvantaged	13.1%	16.9%	17.7%

#### Projections for FY 25 Budget

Projected	
Total Enrollment	562
K-5 Enrollment	538
Pre-School Enrollment	24
Economically Disadvantaged	17.2%



### Facility Information

- Built in 1966
- 90,550 square feet
- 19.5-acre site

*Brownsville Elementary School is part of the **Western Feeder Pattern**. Students continue to Henley Middle School and will graduate from Western Albemarle High School.*

<sup>^</sup> Excludes students who are served in placements outside of ACPS. Does not include MACAA Head Start preschool enrollment.  
School Locations: D-18



# BROWNSVILLE ELEMENTARY SCHOOL

## Home of the Bees

### Brownsville

Expense	20-21 Actuals	21-22 Actuals	22-23 Actuals	23-24 Adopted	24-25 Request	Increase	% Increase
Salary	\$4,563,022	\$5,075,857	\$4,076,511	\$4,553,661	\$4,747,920	\$194,259	4.3%
Other Wages	\$184,244	\$223,185	\$244,883	\$152,995	\$145,640	(\$7,355)	-4.8%
Benefits	\$1,944,945	\$2,034,940	\$1,677,295	\$1,888,319	\$1,918,722	\$30,403	1.6%
Operations	\$83,245	\$136,267	\$179,470	\$121,311	\$106,182	(\$15,129)	-12.5%
<b>Total</b>	<b>\$6,775,456</b>	<b>\$7,470,249</b>	<b>\$6,178,159</b>	<b>\$6,716,286</b>	<b>\$6,918,464</b>	<b>\$202,178</b>	<b>3.0%</b>

State Category Report	20-21 Actuals	21-22 Actuals	22-23 Actuals	23-24 Adopted	24-25 Request	Increase	% Increase
Instruction	\$6,401,031	\$7,000,267	\$5,614,233	\$6,153,993	\$6,313,783	\$159,790	2.6%
Admin/Attend&Health	\$61,306	\$70,936	\$73,591	\$76,026	\$169,947	\$93,921	123.5%
Technology	\$96,376	\$156,158	\$159,196	\$168,033	\$143,632	(\$24,401)	-14.5%
Building Services	\$216,742	\$242,888	\$330,972	\$318,234	\$291,102	(\$27,132)	-8.5%
Transportation			\$167				
<b>Total</b>	<b>\$6,775,456</b>	<b>\$7,470,249</b>	<b>\$6,178,159</b>	<b>\$6,716,286</b>	<b>\$6,918,464</b>	<b>\$202,178</b>	<b>3.0%</b>

FTE Summary	23-24 FTE	24-25 FTE
<b>Instruction</b>	<b>73.54</b>	<b>73.30</b>
Assistant Principal	1.00	1.00
Clerical	2.50	2.50
Principal	1.00	1.00
Teacher^	45.51	45.82
Teaching Assistant	23.53	22.98
<b>Admin/Attend&amp;Health</b>	<b>1.00</b>	<b>2.00</b>
Health Clinician		1.00
Nurse	1.00	1.00
<b>Technology</b>	<b>1.60</b>	<b>1.30</b>
Other Technical	0.60	0.50
Teacher^	1.00	0.80
<b>Building Services</b>	<b>5.75</b>	<b>5.00</b>
Custodial	5.75	5.00
<b>Total</b>	<b>81.89</b>	<b>81.60</b>

Adjusted FTE^^	70.1	70.1
----------------	------	------

^Positions included within the Teacher category are detailed in Section G – Staffing Allocations.

^^ Teaching Assistants (TAs) are allocated at a 2 TA to 1 Teacher ratio. This adjusted number is the FTE allocation to the school.

# CROZET ELEMENTARY SCHOOL

*Home of the Eagles*

## Crozet Elementary

### General School Information

- Grades Served: PK-5
- Address: 1407 Crozet Avenue, Crozet, VA 22932
- Phone: 434-823-4800
- Principal: Staci England

The main goal of Crozet Elementary is to empower our students to learn creatively and innovatively to discover their interests and talents and grow into lifelong contributors to our local and global community. Crozet Elementary makes every effort to know each student; nurturing their mental and physical well-being and maximizing their potential and talents through Culturally Responsive Teaching, Responsive Classroom approaches, project/problem/passion-based learning, and environmental stewardship.



**Staci England**  
Principal  
2022-Present



### School Quality Profile

For the 2022-23 school year, Crozet Elementary received a full accreditation status. For the full School Quality Profile, scan the QR code to the left or visit the [VDOE Crozet Elementary School Quality Profile](#) web page.

### Student Enrollment

#### Historical Fall Membership<sup>^</sup>

	2021-2022	2022-2023	2023-2024
Total Enrollment	324	513	545
Students with Disabilities	10.2%	6.8%	8.1%
English Learners	2.5%	1.6%	2.0%
Economically Disadvantaged	18.2%	15.8%	14.3%

#### Projections for FY 25 Budget

Projected	
Total Enrollment	564
K-5 Enrollment	544
Pre-School Enrollment	20
Economically Disadvantaged	14.8%



### Facility Information

- Built in 1990
- 90,653 square feet
- 21.2-acre site

*Crozet Elementary School is part of the **Western Feeder Pattern**. Students continue to Henley Middle School and will graduate from Western Albemarle High School.*

<sup>^</sup> Excludes students who are served in placements outside of ACPS. Does not include MACAA Head Start preschool enrollment.  
School Locations: D-20



# CROZET ELEMENTARY SCHOOL

## Home of the Eagles

### Crozet

Expense	20-21 Actuals	21-22 Actuals	22-23 Actuals	23-24 Adopted	24-25 Request	Increase	% Increase
Salary	\$2,144,835	\$2,342,140	\$3,503,354	\$3,985,583	\$4,299,499	\$313,916	7.9%
Other Wages	\$92,611	\$135,083	\$168,043	\$146,920	\$88,463	(\$58,457)	-39.8%
Benefits	\$816,224	\$896,150	\$1,396,154	\$1,589,021	\$1,657,077	\$68,056	4.3%
Operations	\$66,744	\$58,303	\$108,430	\$121,542	\$92,968	(\$28,574)	-23.5%
<b>Total</b>	<b>\$3,120,415</b>	<b>\$3,431,675</b>	<b>\$5,175,981</b>	<b>\$5,843,066</b>	<b>\$6,138,007</b>	<b>\$294,941</b>	<b>5.0%</b>

State Category Report	20-21 Actuals	21-22 Actuals	22-23 Actuals	23-24 Adopted	24-25 Request	Increase	% Increase
Instruction	\$2,833,590	\$3,066,962	\$4,752,579	\$5,467,326	\$5,458,392	(\$8,934)	-0.2%
Admin/Attend&Health	\$50,636	\$58,654	\$75,191	\$59,134	\$191,622	\$132,488	224.0%
Technology	\$82,277	\$94,622	\$88,346	\$77,801	\$145,214	\$67,413	86.6%
Building Services	\$153,911	\$211,437	\$259,716	\$238,805	\$342,779	\$103,974	43.5%
Transportation			\$149				
<b>Total</b>	<b>\$3,120,415</b>	<b>\$3,431,675</b>	<b>\$5,175,981</b>	<b>\$5,843,066</b>	<b>\$6,138,007</b>	<b>\$294,941</b>	<b>5.0%</b>

FTE Summary	23-24 FTE	24-25 FTE
<b>Instruction</b>	<b>61.37</b>	<b>59.89</b>
Assistant Principal	1.00	1.00
Clerical	2.50	2.50
Principal	1.00	1.00
Teacher^	44.34	42.85
Teaching Assistant	12.53	12.54
<b>Admin/Attend&amp;Health</b>	<b>1.00</b>	<b>2.00</b>
Health Clinician		1.00
Nurse	1.00	1.00
<b>Technology</b>	<b>0.80</b>	<b>1.25</b>
Other Technical	0.40	0.50
Teacher^	0.40	0.75
<b>Building Services</b>	<b>3.50</b>	<b>6.00</b>
Custodial	3.50	6.00
<b>Total</b>	<b>66.67</b>	<b>69.14</b>

Adjusted FTE^^	60.4	62.9
----------------	------	------

^Positions included within the Teacher category are detailed in Section G – Staffing Allocations.

^^ Teaching Assistants (TAs) are allocated at a 2 TA to 1 Teacher ratio. This adjusted number is the FTE allocation to the school.

# GREER ELEMENTARY SCHOOL

*Home of the Geckos*

## Greer Elementary

### General School Information

- Grades Served: PK-5
- Address: 190 Lambs Lane, Charlottesville, VA 22901
- Phone: 434-973-8371
- Principal: Steve Saunders

As the division's most diverse K-5 school, Greer Elementary School's goal is to reach and challenge every student every day. Greer strives to eliminate student achievement gaps and provide equitable outcomes while creating equal opportunities for every one of our children through an educational program focused on the individual student.



**Steve Saunders**  
Principal  
2019-Present



### School Quality Profile

For the 2022-23 school year, Greer received a status of accredited with conditions. For the full School Quality Profile, scan the QR code to the left or visit the [VDOE Greer Elementary School Quality Profile](#) web page.

### Student Enrollment

#### Historical Fall Membership<sup>^</sup>

	2021-2022	2022-2023	2023-2024
Total Enrollment	480	494	496
Students with Disabilities	12.5%	13.8%	17.5%
English Learners	33.5%	35.2%	34.3%
Economically Disadvantaged	53.8%	52.2%	54.2%

#### Projections for FY 25 Budget

Projected	
Total Enrollment	517
K-5 Enrollment	457
Pre-School Enrollment	60
Economically Disadvantaged	71.2%



### Facility Information

- Built in 1974
- 99,258 square feet
- 15.0-acre site

*Greer Elementary School is part of the **Northern Feeder Pattern**. Students continue to Journey Middle School and will graduate from Albemarle High School.*

<sup>^</sup> Excludes students who are served in placements outside of ACPS. Does not include MACAA Head Start preschool enrollment.

# GREER ELEMENTARY SCHOOL

## Home of the Geckos

### Greer

Expense	20-21 Actuals	21-22 Actuals	22-23 Actuals	23-24 Adopted	24-25 Request	Increase	% Increase
Salary	\$3,642,080	\$3,853,749	\$3,842,408	\$4,795,841	\$5,279,437	\$483,596	10.1%
Other Wages	\$172,629	\$318,978	\$412,363	\$121,001	\$230,644	\$109,643	90.6%
Benefits	\$1,462,562	\$1,458,380	\$1,511,940	\$1,954,186	\$2,071,155	\$116,969	6.0%
Operations	\$88,922	\$90,789	\$82,574	\$97,617	\$111,770	\$14,153	14.5%
<b>Total</b>	<b>\$5,366,192</b>	<b>\$5,721,895</b>	<b>\$5,849,285</b>	<b>\$6,968,645</b>	<b>\$7,693,006</b>	<b>\$724,361</b>	<b>10.4%</b>

State Category Report	20-21 Actuals	21-22 Actuals	22-23 Actuals	23-24 Adopted	24-25 Request	Increase	% Increase
Instruction	\$5,051,936	\$5,354,064	\$5,425,987	\$6,507,211	\$7,110,393	\$603,182	9.3%
Admin/Attend&Health	\$47,137	\$62,399	\$65,448	\$59,678	\$177,990	\$118,312	198.3%
Technology	\$51,065	\$54,302	\$91,332	\$98,625	\$128,304	\$29,679	30.1%
Building Services	\$216,054	\$251,130	\$266,098	\$303,131	\$276,319	(\$26,812)	-8.8%
Transportation			\$421				
<b>Total</b>	<b>\$5,366,192</b>	<b>\$5,721,895</b>	<b>\$5,849,285</b>	<b>\$6,968,645</b>	<b>\$7,693,006</b>	<b>\$724,361</b>	<b>10.4%</b>

FTE Summary	23-24 FTE	24-25 FTE
<b>Instruction</b>	<b>77.76</b>	<b>80.79</b>
Assistant Principal	1.00	2.00
Clerical	2.50	3.00
Principal	1.00	1.00
Teacher^	50.29	51.25
Teaching Assistant	22.97	23.54
<b>Admin/Attend&amp;Health</b>	<b>1.00</b>	<b>2.00</b>
Health Clinician		1.00
Nurse	1.00	1.00
<b>Technology</b>	<b>1.10</b>	<b>1.25</b>
Other Technical	0.60	0.50
Teacher^	0.50	0.75
<b>Building Services</b>	<b>5.00</b>	<b>4.75</b>
Custodial	5.00	4.75
<b>Total</b>	<b>84.86</b>	<b>88.79</b>

Adjusted FTE^^	73.4	77.0
----------------	------	------

^Positions included within the Teacher category are detailed in Section G – Staffing Allocations.

^^ Teaching Assistants (TAs) are allocated at a 2 TA to 1 Teacher ratio. This adjusted number is the FTE allocation to the school.

# HOLLYMEAD ELEMENTARY SCHOOL

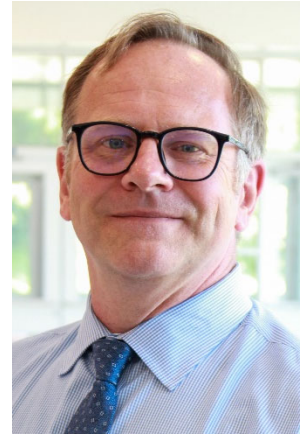
*Home of the Hornets*

## Hollymead Elementary

### General School Information

- Grades Served: PK-5
- Address: 2775 Powell Creek Drive Charlottesville, VA 22911
- Phone: 434-973-8301
- Principal: Joe McCauley

Hollymead Elementary School utilizes student curiosity and an arts integrated curriculum to improve academic and social outcomes for all students. Hollymead, along with its strong and diverse community, creates and expands partnerships, including those with local businesses and our families of military personnel. We strive to embrace the uniqueness of our students, staff, and families, and aim to prioritize our students' health, wellness and social-emotional, and academic development.



**Joe McCauley**  
Principal  
2022-Present



### School Quality Profile

For the 2022-23 school year, Hollymead received a full accreditation status. For the full School Quality Profile, scan the QR code to the left or visit the VDOE [Hollymead Elementary School Quality Profile](#) web page.

### Student Enrollment

#### Historical Fall Membership<sup>^</sup>

	2021-2022	2022-2023	2023-2024
Total Enrollment	339	351	347
Students with Disabilities	15.3%	14.8%	16.7%
English Learners	6.8%	7.7%	10.1%
Economically Disadvantaged	12.4%	17.7%	17.9%

#### Projections for FY 25 Budget

Projected	
Total Enrollment	387
K-5 Enrollment	343
Pre-School Enrollment	44
Economically Disadvantaged	15.1%



### Facility Information

- Built in 1972
- 66,437 square feet
- 20.1-acre site

*Hollymead Elementary School is part of the **Northern Feeder Pattern**. Students continue to Lakeside Middle School and will graduate from Albemarle High School.*

<sup>^</sup> Excludes students who are served in placements outside of ACPS. Does not include MACAA Head Start preschool enrollment.  
School Locations: D-24



# HOLLYMEAD ELEMENTARY SCHOOL

## Home of the Hornets

### Hollymead

Expense	20-21 Actuals	21-22 Actuals	22-23 Actuals	23-24 Adopted	24-25 Request	Increase	% Increase
Salary	\$2,715,379	\$2,788,046	\$2,666,864	\$3,280,939	\$3,513,764	\$232,825	7.1%
Other Wages	\$95,633	\$234,222	\$284,618	\$90,660	\$185,774	\$95,114	104.9%
Benefits	\$1,077,162	\$1,077,901	\$1,049,013	\$1,400,169	\$1,528,909	\$128,740	9.2%
Operations	\$78,810	\$55,639	\$68,526	\$75,702	\$76,469	\$767	1.0%
<b>Total</b>	<b>\$3,966,983</b>	<b>\$4,155,807</b>	<b>\$4,069,021</b>	<b>\$4,847,470</b>	<b>\$5,304,916</b>	<b>\$457,446</b>	<b>9.4%</b>

State Category Report	20-21 Actuals	21-22 Actuals	22-23 Actuals	23-24 Adopted	24-25 Request	Increase	% Increase
Instruction	\$3,668,260	\$3,852,440	\$3,659,573	\$4,472,176	\$4,803,633	\$331,457	7.4%
Admin/Attend&Health	\$59,447	\$48,449	\$77,798	\$63,263	\$135,903	\$72,640	114.8%
Technology	\$61,248	\$45,083	\$51,571	\$69,812	\$95,255	\$25,443	36.4%
Building Services	\$178,028	\$209,836	\$279,639	\$242,219	\$270,125	\$27,906	11.5%
Transportation			\$440				
<b>Total</b>	<b>\$3,966,983</b>	<b>\$4,155,807</b>	<b>\$4,069,021</b>	<b>\$4,847,470</b>	<b>\$5,304,916</b>	<b>\$457,446</b>	<b>9.4%</b>

### FTE Summary

	23-24 FTE	24-25 FTE
<b>Instruction</b>	<b>56.03</b>	<b>56.44</b>
Assistant Principal	1.00	1.00
Clerical	2.00	2.00
Principal	1.00	1.00
Teacher^	30.74	30.58
Teaching Assistant	21.29	21.86
<b>Admin/Attend&amp;Health</b>	<b>1.00</b>	<b>2.00</b>
Health Clinician		1.00
Nurse	1.00	1.00
<b>Technology</b>	<b>0.80</b>	<b>0.90</b>
Other Technical	0.40	0.40
Teacher^	0.40	0.50
<b>Building Services</b>	<b>4.00</b>	<b>4.00</b>
Custodial	4.00	4.00
<b>Total</b>	<b>61.83</b>	<b>63.34</b>

Adjusted FTE^^	51.2	52.4
----------------	------	------

^Positions included within the Teacher category are detailed in Section G – Staffing Allocations.

^^ Teaching Assistants (TAs) are allocated at a 2 TA to 1 Teacher ratio. This adjusted number is the FTE allocation to the school.

# IVY ELEMENTARY SCHOOL

*Home of the Bluebirds*

## Ivy Elementary School

### General School Information

- Grades Served: K-5
- Address: 1610 Owensville Road, Charlottesville, VA 22901
- Phone: 434-293-9304
- Principal: Jennifer Underwood

Ivy Elementary School is a caring community that lifts and supports one another. Our staff is responsive to the individual needs of students and works to create a warm, inclusive classroom and is dedicated to the study of Culturally Responsive Teaching, Responsive Classroom, and differentiated instruction.



**Jennifer Underwood**  
Principal  
2021-Present



### School Quality Profile

For the 2022-23 school year, Ivy received a full accreditation status. For the full School Quality Profile, scan the QR code to the left or visit the [VDOE Ivy Elementary School Quality Profile](#) web page.

### Student Enrollment

#### Historical Fall Membership<sup>^</sup>

	2021-2022	2022-2023	2023-2024
Total Enrollment	321	343	352
Students with Disabilities	10.0%	9.3%	9.9%
English Learners	1.2%	2.6%	2.8%
Economically Disadvantaged	7.2%	7.6%	10.2%

#### Projections for FY 25 Budget

Projected	
Total Enrollment	355
K-5 Enrollment	355
Pre-School Enrollment	0
Economically Disadvantaged	9.2%

### Facility Information

- Built in 1988
- 56,450 square feet
- 17.7-acre site

*Ivy Elementary School is part of the **Western Feeder Pattern**. Students continue to Henley Middle School and will graduate from Western Albemarle High School.*



<sup>^</sup> Excludes students who are served in placements outside of ACPS. Does not include MACAA Head Start preschool enrollment.  
School Locations: D-26

# IVY ELEMENTARY SCHOOL

## Home of the Bluebirds

Ivy

Expense	20-21 Actuals	21-22 Actuals	22-23 Actuals	23-24 Adopted	24-25 Request	Increase	% Increase
Salary	\$2,184,679	\$2,361,637	\$2,455,962	\$2,629,574	\$2,934,263	\$304,689	11.6%
Other Wages	\$81,908	\$172,737	\$114,179	\$90,691	\$73,837	(\$16,854)	-18.6%
Benefits	\$901,956	\$935,009	\$1,035,784	\$1,052,937	\$1,189,290	\$136,353	12.9%
Operations	\$45,808	\$70,805	\$50,476	\$87,054	\$81,037	(\$6,017)	-6.9%
<b>Total</b>	<b>\$3,214,351</b>	<b>\$3,540,188</b>	<b>\$3,656,402</b>	<b>\$3,860,256</b>	<b>\$4,278,427</b>	<b>\$418,171</b>	<b>10.8%</b>

State Category Report	20-21 Actuals	21-22 Actuals	22-23 Actuals	23-24 Adopted	24-25 Request	Increase	% Increase
Instruction	\$2,953,194	\$3,206,694	\$3,358,889	\$3,513,263	\$3,780,408	\$267,145	7.6%
Admin/Attend&Health	\$50,868	\$66,082	\$72,723	\$63,099	\$186,000	\$122,901	194.8%
Technology	\$60,787	\$93,865	\$38,786	\$80,824	\$112,473	\$31,649	39.2%
Building Services	\$149,501	\$173,546	\$185,818	\$203,070	\$199,546	(\$3,524)	-1.7%
Transportation			\$185				
<b>Total</b>	<b>\$3,214,351</b>	<b>\$3,540,188</b>	<b>\$3,656,402</b>	<b>\$3,860,256</b>	<b>\$4,278,427</b>	<b>\$418,171</b>	<b>10.8%</b>

FTE Summary	23-24 FTE	24-25 FTE
<b>Instruction</b>	<b>38.44</b>	<b>39.51</b>
Assistant Principal	1.00	1.00
Clerical	2.00	2.00
Principal	1.00	1.00
Teacher^	28.15	28.65
Teaching Assistant	6.29	6.86
<b>Admin/Attend&amp;Health</b>	<b>1.00</b>	<b>2.00</b>
Health Clinician		1.00
Nurse	1.00	1.00
<b>Technology</b>	<b>1.00</b>	<b>1.10</b>
Other Technical	0.60	0.60
Teacher^	0.40	0.50
<b>Building Services</b>	<b>3.34</b>	<b>3.00</b>
Custodial	3.34	3.00
<b>Total</b>	<b>43.78</b>	<b>45.61</b>

Adjusted FTE^^	40.6	42.2
----------------	------	------

^Positions included within the Teacher category are detailed in Section G – Staffing Allocations.

^^ Teaching Assistants (TAs) are allocated at a 2 TA to 1 Teacher ratio. This adjusted number is the FTE allocation to the school.



# MOUNTAIN VIEW ELEMENTARY SCHOOL

*Home of the Colts*

## Mountain View Elementary

### General School Information

- Grades Served: PK-5
- Address: 1757 Avon Street Extended, Charlottesville, VA 22902
- Phone: 434-293-7455
- Principal: Seth Kennard

At Mountain View Elementary School, we aim for all students to communicate, collaborate, create, and think critically on a level necessary to be empowered to become independent, lifelong learners. Our staff and students work to create and maintain a positive and safe school that applies the skills of a culturally responsive climate, values the individual, and builds healthy social skills.



**Seth Kennard**  
Principal  
2023-Present



### School Quality Profile

For the 2022-23 school year, Mountain View received a full accreditation status. For the full School Quality Profile, scan the QR code to the left of visit the [VDOE Mountain View Elementary School Quality Profile](#) web page.

### Student Enrollment

#### Historical Fall Membership<sup>^</sup>

2021-2022 2022-2023 2023-2024

Total Enrollment	724	750	756
Students with Disabilities	12.7%	12.7%	13.9%
English Learners	18.5%	17.3%	18.0%
Economically Disadvantaged	38.4%	46.5%	40.5%

#### Projections for FY 25 Budget

Projected

Total Enrollment	777
K-5 Enrollment	729
Pre-School Enrollment	48
Economically Disadvantaged	45.1%



### Facility Information

- Built in 1990
- 92,307 square feet
- 16.1-acre site

*Mountain View Elementary School is part of the **Southern Feeder Pattern**. Students continue to Burley or Walton Middle School and will graduate from Monticello High School.*

<sup>^</sup> Excludes students who are served in placements outside of ACPS. Does not include MACAA Head Start preschool enrollment.  
School Locations: D-28



# MOUNTAIN VIEW ELEMENTARY SCHOOL

## Home of the Colts

### Mountain View

Expense	20-21 Actuals	21-22 Actuals	22-23 Actuals	23-24 Adopted	24-25 Request	Increase	% Increase
Salary	\$4,647,510	\$5,287,020	\$5,652,230	\$6,606,384	\$6,995,932	\$389,548	5.9%
Other Wages	\$340,635	\$479,099	\$460,311	\$182,063	\$154,406	(\$27,657)	-15.2%
Benefits	\$1,935,627	\$2,098,137	\$2,246,895	\$2,698,473	\$2,765,024	\$66,551	2.5%
Operations	\$101,863	\$116,533	\$125,276	\$139,410	\$151,336	\$11,926	8.6%
<b>Total</b>	<b>\$7,025,635</b>	<b>\$7,980,789</b>	<b>\$8,484,713</b>	<b>\$9,626,330</b>	<b>\$10,066,698</b>	<b>\$440,368</b>	<b>4.6%</b>

State Category Report	20-21 Actuals	21-22 Actuals	22-23 Actuals	23-24 Adopted	24-25 Request	Increase	% Increase
Instruction	\$6,716,124	\$7,496,251	\$7,871,295	\$9,030,481	\$9,390,825	\$360,344	4.0%
Admin/Attend&Health	\$62,914	\$108,844	\$131,670	\$74,810	\$183,116	\$108,306	144.8%
Technology	\$50,676	\$81,129	\$102,234	\$146,912	\$172,481	\$25,569	17.4%
Building Services	\$195,921	\$294,565	\$379,514	\$374,127	\$320,276	(\$53,851)	-14.4%
<b>Total</b>	<b>\$7,025,635</b>	<b>\$7,980,789</b>	<b>\$8,484,713</b>	<b>\$9,626,330</b>	<b>\$10,066,698</b>	<b>\$440,368</b>	<b>4.6%</b>

FTE Summary	23-24 FTE	24-25 FTE
<b>Instruction</b>	<b>107.29</b>	<b>107.40</b>
Assistant Principal	2.00	2.00
Clerical	3.00	3.00
Principal	1.00	1.00
Teacher^	70.89	71.56
Teaching Assistant	30.40	29.84
<b>Admin/Attend&amp;Health</b>	<b>1.00</b>	<b>2.00</b>
Health Clinician		1.00
Nurse	1.00	1.00
<b>Technology</b>	<b>1.60</b>	<b>1.60</b>
Other Technical	0.60	0.60
Teacher^	1.00	1.00
<b>Building Services</b>	<b>6.34</b>	<b>5.00</b>
Custodial	6.34	5.00
<b>Total</b>	<b>116.23</b>	<b>116.00</b>

Adjusted FTE^^	101.0	101.1
----------------	-------	-------

^Positions included within the Teacher category are detailed in Section G – Staffing Allocations.

^^ Teaching Assistants (TAs) are allocated at a 2 TA to 1 Teacher ratio. This adjusted number is the FTE allocation to the school.

# MURRAY ELEMENTARY SCHOOL

*Home of the Mustangs*

## Murray Elementary

### General School Information

- Grades Served: PK-5
- Address: 3251 Morgantown Road, Charlottesville, VA 22903
- Phone: 434-977-4599
- Principal: Wendy Eckerle

The mission of Murray Elementary School is to create a positive, safe, and nurturing environment in which all children find success, happiness, and a love for learning that remains with them forever. Our staff works together to foster relationships with and among students using the guiding principles of the Responsive Classroom and Positive Discipline.



**Wendy Eckerle**  
Principal  
2023-Present



### School Quality Profile

For the 2022-23 school year, Murray received a full accreditation status. For the full School Quality Profile, scan the QR code to the left or visit the [VDOE Murray Elementary School Quality Profile](#) web page.

### Student Enrollment

#### Historical Fall Membership<sup>^</sup>

	2021-2022	2022-2023	2023-2024
Total Enrollment	267	281	277
Students with Disabilities	9.7%	8.5%	8.7%
English Learners	3.4%	3.9%	7.2%
Economically Disadvantaged	9.0%	8.5%	9.4%

#### Projections for FY 25 Budget

	Projected
Total Enrollment	280
K-5 Enrollment	280
Pre-School Enrollment	0
Economically Disadvantaged	9.2%



### Facility Information

- Built in 1960
- 42,057 square feet
- 20.9-acre site

*Murray Elementary School is part of the **Western Feeder Pattern**. Students continue to Henley Middle School and will graduate from Western Albemarle High School.*

<sup>^</sup> Excludes students who are served in placements outside of ACPS. Does not include MACAA Head Start preschool enrollment.  
School Locations: D-30

# MURRAY ELEMENTARY SCHOOL

*Home of the Mustangs*

Murray

Expense	20-21 Actuals	21-22 Actuals	22-23 Actuals	23-24 Adopted	24-25 Request	Increase	% Increase
Salary	\$1,894,130	\$2,120,818	\$2,328,289	\$2,620,118	\$2,742,933	\$122,815	4.7%
Other Wages	\$72,359	\$141,048	\$141,685	\$73,810	\$70,996	(\$2,814)	-3.8%
Benefits	\$751,423	\$803,703	\$920,920	\$1,054,813	\$1,153,767	\$98,954	9.4%
Operations	\$40,736	\$64,542	\$68,133	\$67,241	\$78,325	\$11,084	16.5%
<b>Total</b>	<b>\$2,758,647</b>	<b>\$3,130,111</b>	<b>\$3,459,028</b>	<b>\$3,815,982</b>	<b>\$4,046,021</b>	<b>\$230,039</b>	<b>6.0%</b>

State Category Report	20-21 Actuals	21-22 Actuals	22-23 Actuals	23-24 Adopted	24-25 Request	Increase	% Increase
Instruction	\$2,529,975	\$2,865,773	\$3,228,594	\$3,538,797	\$3,608,601	\$69,804	2.0%
Admin/Attend&Health	\$43,167	\$51,987	\$65,113	\$53,046	\$160,574	\$107,528	202.7%
Technology	\$46,510	\$63,028	\$33,921	\$58,698	\$91,149	\$32,451	55.3%
Building Services	\$138,995	\$149,324	\$131,328	\$165,441	\$185,697	\$20,256	12.2%
Transportation			\$72				
<b>Total</b>	<b>\$2,758,647</b>	<b>\$3,130,111</b>	<b>\$3,459,028</b>	<b>\$3,815,982</b>	<b>\$4,046,021</b>	<b>\$230,039</b>	<b>6.0%</b>

FTE Summary	23-24 FTE	24-25 FTE
<b>Instruction</b>	<b>43.55</b>	<b>39.68</b>
Assistant Principal	1.00	1.00
Clerical	2.00	2.00
Principal	1.00	1.00
Teacher^	25.26	23.94
Teaching Assistant	14.29	11.74
<b>Admin/Attend&amp;Health</b>	<b>1.00</b>	<b>2.00</b>
Health Clinician		1.00
Nurse	1.00	1.00
<b>Technology</b>	<b>0.70</b>	<b>0.85</b>
Other Technical	0.40	0.40
Teacher^	0.30	0.45
<b>Building Services</b>	<b>2.66</b>	<b>3.00</b>
Custodial	2.66	3.00
<b>Total</b>	<b>47.91</b>	<b>45.53</b>

Adjusted FTE^^	40.8	39.7
----------------	------	------

^Positions included within the Teacher category are detailed in Section G – Staffing Allocations.

^^ Teaching Assistants (TAs) are allocated at a 2 TA to 1 Teacher ratio. This adjusted number is the FTE allocation to the school.



# RED HILL ELEMENTARY SCHOOL

*Home of the Moos*

## Red Hill Elementary

### General School Information

- Grades Served: PK-5
- Address: 3901 Red Hill School Road, North Garden, VA 22959
- Phone: 434-293-5332
- Principal: Nancy McCullen

Together, the entire Red Hill community engages the mind and heart of each Red Hill Elementary School student to become a lifelong learner with the necessary skills to be a contributing member of our world. Through the development of curiosity, imagination, love of learning, respect for diversity, and intellect, all learners reach their highest potential.



**Nancy McCullen**  
Principal  
2018-Present



### School Quality Profile

For the 2022-23 school year, Red Hill received a status of accredited with conditions. For the full School Quality Profile, scan the QR code to the left or visit the [VDOE Red Hill Elementary School Quality Profile](#) web page.

### Student Enrollment

#### Historical Fall Membership<sup>^</sup>

	2021-2022	2022-2023	2023-2024
Total Enrollment	189	199	196
Students with Disabilities	16.9%	17.1%	20.4%
English Learners	5.8%	5.5%	7.7%
Economically Disadvantaged	43.4%	44.7%	45.9%

#### Projections for FY 25 Budget

Projected	
Total Enrollment	200
K-5 Enrollment	182
Pre-School Enrollment	18
Economically Disadvantaged	57.4%



### Facility Information

- Built in 1973
- 40,085 square feet
- 10.9-acre site

*Red Hill Elementary School is part of the **Southern Feeder Pattern**. Students continue to Walton Middle School and will graduate from Monticello High School.*

<sup>^</sup> Excludes students who are served in placements outside of ACPS. Does not include MACAA Head Start preschool enrollment.

# RED HILL ELEMENTARY SCHOOL

## Home of the Moos

### Red Hill

Expense	20-21 Actuals	21-22 Actuals	22-23 Actuals	23-24 Adopted	24-25 Request	Increase	% Increase
Salary	\$1,350,215	\$1,447,994	\$1,683,192	\$1,926,732	\$2,167,947	\$241,215	12.5%
Other Wages	\$75,351	\$83,769	\$111,001	\$73,314	\$81,575	\$8,261	11.3%
Benefits	\$566,189	\$579,980	\$682,976	\$768,160	\$836,407	\$68,247	8.9%
Operations	\$32,620	\$35,769	\$32,175	\$60,224	\$64,224	\$4,000	6.6%
<b>Total</b>	<b>\$2,024,374</b>	<b>\$2,147,512</b>	<b>\$2,509,343</b>	<b>\$2,828,430</b>	<b>\$3,150,153</b>	<b>\$321,723</b>	<b>11.4%</b>

State Category Report	20-21 Actuals	21-22 Actuals	22-23 Actuals	23-24 Adopted	24-25 Request	Increase	% Increase
Instruction	\$1,830,923	\$1,962,945	\$2,314,124	\$2,606,890	\$2,803,032	\$196,142	7.5%
Admin/Attend&Health	\$56,019	\$60,852	\$57,606	\$52,456	\$168,250	\$115,794	220.7%
Technology	\$43,949	\$39,596	\$36,338	\$39,587	\$50,691	\$11,104	28.0%
Building Services	\$93,482	\$84,119	\$101,151	\$129,497	\$128,180	(\$1,317)	-1.0%
Transportation			\$125				
<b>Total</b>	<b>\$2,024,374</b>	<b>\$2,147,512</b>	<b>\$2,509,343</b>	<b>\$2,828,430</b>	<b>\$3,150,153</b>	<b>\$321,723</b>	<b>11.4%</b>

FTE Summary	23-24 FTE	24-25 FTE
<b>Instruction</b>	<b>28.86</b>	<b>28.85</b>
Assistant Principal	1.00	1.00
Clerical	2.00	2.00
Principal	1.00	1.00
Teacher^	19.13	19.67
Teaching Assistant	5.73	5.18
<b>Admin/Attend&amp;Health</b>	<b>1.00</b>	<b>2.00</b>
Health Clinician		1.00
Nurse	1.00	1.00
<b>Technology</b>	<b>0.50</b>	<b>0.50</b>
Other Technical	0.20	0.25
Teacher^	0.30	0.25
<b>Building Services</b>	<b>2.00</b>	<b>2.00</b>
Custodial	2.00	2.00
<b>Total</b>	<b>32.36</b>	<b>33.35</b>

Adjusted FTE^^	29.5	30.8
----------------	------	------

^Positions included within the Teacher category are detailed in Section G – Staffing Allocations.

^^ Teaching Assistants (TAs) are allocated at a 2 TA to 1 Teacher ratio. This adjusted number is the FTE allocation to the school.

# SCOTTSVILLE ELEMENTARY SCHOOL

*Home of the Tigers*

## Scottsville Elementary

### General School Information

- Grades Served: PK-5
- Address: 7868 Scottsville Road, Scottsville, VA 24590
- Phone: 434-286-2441
- Principal: Cindy Wells

Scottsville Elementary School is a place where students and staff work together to learn and grow. We engage every student through their interests as we empower them to own their learning through active, engaging, and meaningful learning experiences that strengthen the commitment to education of the entire Scottsville community.



**Cyndi Wells**  
Principal  
2023-Present



### School Quality Profile

For the 2021-22 school year, Scottsville Elementary received a full accreditation status. For the full School Quality Profile, scan the QR code on the left or visit the [VDOE Scottsville Elementary School Quality Profile](#) web page.

### Student Enrollment

#### Historical Fall Membership<sup>^</sup>

	2021-2022	2022-2023	2023-2024
Total Enrollment	216	225	211
Students with Disabilities	13.9%	13.3%	15.6%
English Learners	3.2%	2.2%	0.9%
Economically Disadvantaged	45.8%	43.6%	46.0%

#### Projections for FY 25 Budget

	Projected
Total Enrollment	210
K-5 Enrollment	192
Pre-School Enrollment	18
Economically Disadvantaged	52.6%



### Facility Information

- Built in 1974
- 50,097 square feet
- 15.0-acre site

*Scottsville Elementary School is part of the **Southern Feeder Pattern**. Students continue to Walton Middle School and will graduate from Monticello High School*

<sup>^</sup> Excludes students who are served in placements outside of ACPS. Does not include MACAA Head Start preschool enrollment.



# SCOTTSVILLE ELEMENTARY SCHOOL

## Home of the Tigers

### Scottsville

Expense	20-21 Actuals	21-22 Actuals	22-23 Actuals	23-24 Adopted	24-25 Request	Increase	% Increase
Salary	\$1,514,752	\$1,772,029	\$1,982,255	\$2,099,496	\$2,254,291	\$154,795	7.4%
Other Wages	\$97,761	\$88,363	\$101,578	\$54,442	\$43,863	(\$10,579)	-19.4%
Benefits	\$598,431	\$664,065	\$811,647	\$796,328	\$882,213	\$85,885	10.8%
Operations	\$69,686	\$74,033	\$82,407	\$53,567	\$55,982	\$2,415	4.5%
<b>Total</b>	<b>\$2,280,630</b>	<b>\$2,598,491</b>	<b>\$2,977,887</b>	<b>\$3,003,833</b>	<b>\$3,236,349</b>	<b>\$232,516</b>	<b>7.7%</b>

State Category Report	20-21 Actuals	21-22 Actuals	22-23 Actuals	23-24 Adopted	24-25 Request	Increase	% Increase
Instruction	\$2,054,925	\$2,351,097	\$2,700,374	\$2,734,942	\$2,831,639	\$96,697	3.5%
Admin/Attend&Health	\$54,903	\$64,927	\$67,027	\$69,701	\$172,127	\$102,426	147.0%
Technology	\$47,069	\$32,496	\$48,170	\$46,967	\$60,709	\$13,742	29.3%
Building Services	\$123,732	\$149,971	\$162,317	\$152,223	\$171,874	\$19,651	12.9%
<b>Total</b>	<b>\$2,280,630</b>	<b>\$2,598,491</b>	<b>\$2,977,887</b>	<b>\$3,003,833</b>	<b>\$3,236,349</b>	<b>\$232,516</b>	<b>7.7%</b>

FTE Summary	23-24 FTE	24-25 FTE
<b>Instruction</b>	<b>31.14</b>	<b>29.91</b>
Assistant Principal	1.00	1.00
Clerical	2.00	2.00
Principal	1.00	1.00
Teacher^	19.40	18.73
Teaching Assistant	7.74	7.18
<b>Admin/Attend&amp;Health</b>	<b>1.00</b>	<b>2.00</b>
Health Clinician		1.00
Nurse	1.00	1.00
<b>Technology</b>	<b>0.60</b>	<b>0.59</b>
Other Technical	0.20	0.25
Teacher^	0.40	0.34
<b>Building Services</b>	<b>2.75</b>	<b>2.75</b>
Custodial	2.75	2.75
<b>Total</b>	<b>35.49</b>	<b>35.25</b>

Adjusted FTE^^	31.6	31.7
----------------	------	------

^Positions included within the Teacher category are detailed in Section G – Staffing Allocations.

^^ Teaching Assistants (TAs) are allocated at a 2 TA to 1 Teacher ratio. This adjusted number is the FTE allocation to the school.

# STONE-ROBINSON ELEMENTARY SCHOOL

*Home of the Eagles*

## Stone-Robinson Elementary

### General School Information

- Grades Served: PK-5
- Address: 958 North Milton Road Charlottesville, VA 22911
- Phone: 434-296-3754
- Principal: Leslie Wills-Taylor

At Stone-Robinson Elementary, we believe all students come to us with a natural curiosity and love for learning. We maintain high expectations and provide authentic learning experiences that nurture each child's social, emotional, and academic growth. At the heart of it all, we believe in building strong relationships with our students and community members that promote a positive school climate — one that is safe, kind, and inclusive for all learners.



**Leslie Wills-Taylor**  
Principal  
2023-Present



### School Quality Profile

For the 2022-23 school year, Stone-Robinson received a full accreditation status. For the full School Quality Profile, scan the QR code to the left or visit the [VDOE Stone-Robinson Elementary School Quality Profile](#) web page.

### Student Enrollment

#### Historical Fall Membership<sup>^</sup>

	2021-2022	2022-2023	2023-2024
Total Enrollment	469	472	488
Students with Disabilities	16.0%	14.2%	16.0%
English Learners	6.2%	5.3%	5.1%
Economically Disadvantaged	24.7%	32.0%	29.1%

#### Projections for FY 25 Budget

	Projected
Total Enrollment	495
K-5 Enrollment	459
Pre-School Enrollment	36
Economically Disadvantaged	28.4%



### Facility Information

- Built in 1961
- 71,100 square feet
- 11.3-acre site

*Stone-Robinson Elementary School is part of the **Southern Feeder Pattern**. Students continue to Burley or Walton Middle School and will graduate from Monticello High School.*

<sup>^</sup> Excludes students who are served in placements outside of ACPS. Does not include MACAA Head Start preschool enrollment.  
School Locations: D-36



# STONE-ROBINSON ELEMENTARY SCHOOL

## Home of the Eagles

### Stone-Robinson

Expense	20-21 Actuals	21-22 Actuals	22-23 Actuals	23-24 Adopted	24-25 Request	Increase	% Increase
Salary	\$3,206,977	\$3,442,607	\$3,685,125	\$3,939,552	\$4,264,813	\$325,261	8.3%
Other Wages	\$168,151	\$185,333	\$177,962	\$108,825	\$73,467	(\$35,358)	-32.5%
Benefits	\$1,351,265	\$1,408,291	\$1,613,490	\$1,632,558	\$1,749,567	\$117,009	7.2%
Operations	\$59,037	\$67,976	\$61,191	\$92,126	\$95,607	\$3,481	3.8%
<b>Total</b>	<b>\$4,785,431</b>	<b>\$5,104,206</b>	<b>\$5,537,767</b>	<b>\$5,773,061</b>	<b>\$6,183,454</b>	<b>\$410,393</b>	<b>7.1%</b>

State Category Report	20-21 Actuals	21-22 Actuals	22-23 Actuals	23-24 Adopted	24-25 Request	Increase	% Increase
Instruction	\$4,508,809	\$4,827,821	\$5,218,270	\$5,405,371	\$5,662,125	\$256,754	4.7%
Admin/Attend&Health	\$52,595	\$47,786	\$74,846	\$58,583	\$161,589	\$103,006	175.8%
Technology	\$53,714	\$53,242	\$79,635	\$87,451	\$120,042	\$32,591	37.3%
Building Services	\$170,313	\$175,357	\$164,847	\$221,656	\$239,698	\$18,042	8.1%
Transportation			\$169				
<b>Total</b>	<b>\$4,785,431</b>	<b>\$5,104,206</b>	<b>\$5,537,767</b>	<b>\$5,773,061</b>	<b>\$6,183,454</b>	<b>\$410,393</b>	<b>7.1%</b>

FTE Summary	23-24 FTE	24-25 FTE
<b>Instruction</b>	<b>66.92</b>	<b>67.47</b>
Assistant Principal	1.00	1.00
Clerical	2.50	2.00
Principal	1.00	1.00
Teacher^	39.44	40.49
Teaching Assistant	22.98	22.98
<b>Admin/Attend&amp;Health</b>	<b>1.00</b>	<b>2.00</b>
Health Clinician		1.00
Nurse	1.00	1.00
<b>Technology</b>	<b>1.00</b>	<b>1.16</b>
Other Technical	0.40	0.50
Teacher^	0.60	0.66
<b>Building Services</b>	<b>3.75</b>	<b>3.75</b>
Custodial	3.75	3.75
<b>Total</b>	<b>72.67</b>	<b>74.38</b>

Adjusted FTE^^	61.2	62.9
----------------	------	------

^Positions included within the Teacher category are detailed in Section G – Staffing Allocations.

^^ Teaching Assistants (TAs) are allocated at a 2 TA to 1 Teacher ratio. This adjusted number is the FTE allocation to the school.

# STONY POINT ELEMENTARY SCHOOL

*Home of the Dragons*

## Stony Point Elementary

### General School Information

- Grades Served: PK-5
- Address: 3893 Stony Point Road, Keswick, VA 22947
- Phone: 434-973-6405
- Principal: Maureen Jensen

Stony Point Elementary is a creative community of high-achieving learners who encourage each other to find and explore things about which they are passionate. It is our mission to foster an environment that allows our members to: persevere, overcome challenges, be unafraid to innovate, and believe that there is no limit to what we can accomplish.



**Maureen Jensen**  
Principal  
2021-Present



### School Quality Profile

For the 2022-23 school year, Stony Point received a full accreditation status. For the full School Quality Profile, scan the QR code to the left or visit the [VDOE Stony Point Elementary School Quality Profile](#) web page.

### Student Enrollment

#### Historical Fall Membership<sup>^</sup>

	2021-2022	2022-2023	2023-2024
Total Enrollment	187	188	188
Students with Disabilities	7.5%	9.6%	14.4%
English Learners	3.2%	2.1%	3.2%
Economically Disadvantaged	29.4%	27.7%	27.1%

#### Projections for FY 25 Budget

	Projected
Total Enrollment	187
K-5 Enrollment	175
Pre-School Enrollment	12
Economically Disadvantaged	28.6%

### Facility Information

- Built in 1934
- 38,500 square feet
- 11.6-acre site

*Stony Point Elementary School is part of both the **Northern and Southern feeder patterns**. Students continue to either Burley Middle School and then Monticello High School, or Lakeside Middle School followed by Albemarle High School.*



<sup>^</sup> Excludes students who are served in placements outside of ACPS. Does not include MACAA Head Start preschool enrollment.  
School Locations: D-38

# STONY POINT ELEMENTARY SCHOOL

## Home of the Dragons

### Stony Point

Expense	20-21 Actuals	21-22 Actuals	22-23 Actuals	23-24 Adopted	24-25 Request	Increase	% Increase
Salary	\$1,588,973	\$1,671,622	\$1,842,911	\$2,024,793	\$2,157,028	\$132,235	6.5%
Other Wages	\$64,261	\$89,633	\$112,225	\$51,496	\$46,522	(\$4,974)	-9.7%
Benefits	\$667,606	\$682,400	\$763,656	\$841,387	\$856,948	\$15,561	1.8%
Operations	\$51,772	\$66,753	\$53,283	\$54,823	\$57,664	\$2,841	5.2%
<b>Total</b>	<b>\$2,372,613</b>	<b>\$2,510,408</b>	<b>\$2,772,076</b>	<b>\$2,972,499</b>	<b>\$3,118,162</b>	<b>\$145,663</b>	<b>4.9%</b>

State Category Report	20-21 Actuals	21-22 Actuals	22-23 Actuals	23-24 Adopted	24-25 Request	Increase	% Increase
Instruction	\$2,107,411	\$2,237,984	\$2,441,981	\$2,656,815	\$2,702,767	\$45,952	1.7%
Admin/Attend&Health	\$57,779	\$61,166	\$74,069	\$64,036	\$179,676	\$115,640	180.6%
Technology	\$49,708	\$41,901	\$35,069	\$58,705	\$43,211	(\$15,494)	-26.4%
Building Services	\$157,714	\$169,357	\$220,958	\$192,943	\$192,508	(\$435)	-0.2%
<b>Total</b>	<b>\$2,372,613</b>	<b>\$2,510,408</b>	<b>\$2,772,076</b>	<b>\$2,972,499</b>	<b>\$3,118,162</b>	<b>\$145,663</b>	<b>4.9%</b>

FTE Summary	23-24 FTE	24-25 FTE
<b>Instruction</b>	<b>31.40</b>	<b>30.37</b>
Assistant Principal	1.00	1.00
Clerical	2.00	2.00
Principal	1.00	1.00
Teacher^	18.23	17.19
Teaching Assistant	9.17	9.18
<b>Admin/Attend&amp;Health</b>	<b>1.00</b>	<b>2.00</b>
Health Clinician		1.00
Nurse	1.00	1.00
<b>Technology</b>	<b>0.70</b>	<b>0.45</b>
Other Technical	0.30	0.20
Teacher^	0.40	0.25
<b>Building Services</b>	<b>3.00</b>	<b>3.00</b>
Custodial	3.00	3.00
<b>Total</b>	<b>36.10</b>	<b>35.82</b>

Adjusted FTE^^	31.5	31.2
----------------	------	------

^Positions included within the Teacher category are detailed in Section G – Staffing Allocations.

^^ Teaching Assistants (TAs) are allocated at a 2 TA to 1 Teacher ratio. This adjusted number is the FTE allocation to the school.



# WOODBROOK ELEMENTARY SCHOOL

*Home of the Bears*

## Woodbrook Elementary

### General School Information

- Grades Served: PK-5
- Address: 100 Woodbrook Drive, Charlottesville, VA 22901
- Phone: 434-973-6600
- Principal: C'ta DeLaurier

Our growing school serves a close-knit community that is interested and involved in the intellectual and social growth of all children. Our dedication and commitment to Responsive Classroom unites our students and staff in creating learning environments where we place an equal amount of attention on the planning of academics and the social and emotional development of our students.



**C'ta DeLaurier**  
Principal  
2023-Present



### School Quality Profile

For the 2022-23 school year, Woodbrook received a status of accreditation with conditions. For the full School Quality Profile, scan the QR code to the left or visit the [VDOE Woodbrook Elementary School Quality Profile](#) web page.

### Student Enrollment

#### Historical Fall Membership<sup>^</sup>

	2021-2022	2022-2023	2023-2024
Total Enrollment	558	605	525
Students with Disabilities	11.5%	10.6%	10.7%
English Learners	23.5%	24.1%	33.0%
Economically Disadvantaged	53.9%	57.7%	55.0%

#### Projections for FY 25 Budget<sup>12</sup>

	Projected
Total Enrollment	522
K-5 Enrollment	522
Pre-School Enrollment	0
Economically Disadvantaged	66.5%



### Facility Information

- Built in 1966
- 82,966 square feet
- 12.0-acre site

*Woodbrook Elementary School is part of the **Northern Feeder Pattern**. Students continue to Journey Middle School and will graduate from Albemarle High School.*

<sup>^</sup> Excludes students who are served in placements outside of ACPS. Does not include MACAA Head Start preschool enrollment.

<sup>2</sup> Assumes no pre-school enrollment until Redistricting Recommendations are approved.



# WOODBROOK ELEMENTARY SCHOOL

## Home of the Bears

### Woodbrook

Expense	20-21 Actuals	21-22 Actuals	22-23 Actuals	23-24 Adopted	24-25 Request	Increase	% Increase
Salary	\$3,542,614	\$4,141,601	\$4,459,200	\$5,535,937	\$5,312,911	(\$223,026)	-4.0%
Other Wages	\$162,354	\$275,126	\$193,373	\$147,395	\$78,183	(\$69,212)	-47.0%
Benefits	\$1,466,070	\$1,636,103	\$1,808,950	\$2,202,794	\$2,142,441	(\$60,353)	-2.7%
Operations	\$84,517	\$90,664	\$116,415	\$113,973	\$123,587	\$9,614	8.4%
<b>Total</b>	<b>\$5,255,555</b>	<b>\$6,143,495</b>	<b>\$6,577,937</b>	<b>\$8,000,099</b>	<b>\$7,657,122</b>	<b>(\$342,977)</b>	<b>-4.3%</b>

State Category Report	20-21 Actuals	21-22 Actuals	22-23 Actuals	23-24 Adopted	24-25 Request	Increase	% Increase
Instruction	\$4,960,902	\$5,791,801	\$6,267,014	\$7,581,701	\$7,027,300	(\$554,401)	-7.3%
Admin/Attend&Health	\$48,149	\$61,523	\$56,947	\$58,725	\$166,771	\$108,046	184.0%
Technology	\$52,142	\$46,561	\$55,006	\$79,528	\$112,053	\$32,525	40.9%
Building Services	\$194,362	\$243,611	\$198,970	\$280,145	\$350,998	\$70,853	25.3%
<b>Total</b>	<b>\$5,255,555</b>	<b>\$6,143,495</b>	<b>\$6,577,937</b>	<b>\$8,000,099</b>	<b>\$7,657,122</b>	<b>(\$342,977)</b>	<b>-4.3%</b>

FTE Summary	23-24 FTE	24-25 FTE
<b>Instruction</b>	<b>89.21</b>	<b>77.19</b>
Assistant Principal	1.00	2.00
Clerical	3.00	3.00
Principal	1.00	1.00
Teacher^	60.49	53.65
Teaching Assistant	23.72	17.54
<b>Admin/Attend&amp;Health</b>	<b>1.00</b>	<b>2.00</b>
Health Clinician		1.00
Nurse	1.00	1.00
<b>Technology</b>	<b>0.90</b>	<b>1.15</b>
Other Technical	0.40	0.40
Teacher^	0.50	0.75
<b>Building Services</b>	<b>4.63</b>	<b>5.00</b>
Custodial	4.63	5.00
<b>Total</b>	<b>95.74</b>	<b>85.34</b>

Adjusted FTE^^	83.9	76.6
----------------	------	------

^Positions included within the Teacher category are detailed in Section G – Staffing Allocations.

^^ Teaching Assistants (TAs) are allocated at a 2 TA to 1 Teacher ratio. This adjusted number is the FTE allocation to the school.

# BURLEY MIDDLE SCHOOL

*Home of the Bears*

## Burley Middle School

### General School Information

- Grades Served: 6-8
- Address: 901 Rose Hill Drive, Charlottesville, VA 22903
- Phone: 434-295-5101
- Principal: Kasaundra Blount

Jackson P. Burley Middle School, continuing to build on its historic legacy of integrity and achievement, seeks to cultivate educational partnerships that engage students, staff, families, and the community in the pursuit of positive academic outcomes for all students. Burley Middle School's core values including "Character, Scholarship, and Service," which remains the driving force behind all that we do and keeps us connected to the historic legacy of Burley High School.



**Kasaundra Blount**  
Principal  
2020-Present



### School Quality Profile

For the 2022-23 school year, Burley received a full accreditation status. For the full school quality profile, scan the QR code to the left or visit the [VDOE Burley Middle School Quality Profile](#) web page.

### Student Enrollment

#### Historical Fall Membership

	2021-2022	2022-2023	2023-2024
Total Enrollment	598	588	552
Students with Disabilities	14.2%	13.8%	14.3%
English Learners	18.7%	19.0%	19.4%
Economically Disadvantaged	38.8%	45.4%	45.5%

#### Projections for FY 25 Budget

Projected	
Total Enrollment	552
Economically Disadvantaged	44.9%



### Facility Information

- Built in 1951
- 123,626 square feet
- 15.3-acre site

*Burley Middle School is part of both the **Northern and Southern feeder patterns**. Students previously attended Agnor-Hurt, Mountain View, Stone-Robinson, or Stony Point Elementary School, and will graduate from either Albemarle or Monticello High School.*

# BURLEY MIDDLE SCHOOL

## Home of the Bears

### Burley

Expense	20-21 Actuals	21-22 Actuals	22-23 Actuals	23-24 Adopted	24-25 Request	Increase	% Increase
Salary	\$4,176,321	\$4,519,060	\$4,501,367	\$4,679,109	\$5,086,246	\$407,137	8.7%
Other Wages	\$114,318	\$182,432	\$195,425	\$130,396	\$77,732	(\$52,664)	-40.4%
Benefits	\$1,751,604	\$1,776,240	\$1,830,424	\$1,870,828	\$2,011,757	\$140,929	7.5%
Operations	\$130,203	\$117,845	\$154,469	\$163,958	\$158,249	(\$5,709)	-3.5%
<b>Total</b>	<b>\$6,172,446</b>	<b>\$6,595,577</b>	<b>\$6,681,685</b>	<b>\$6,844,291</b>	<b>\$7,333,984</b>	<b>\$489,693</b>	<b>7.2%</b>

State Category Report	20-21 Actuals	21-22 Actuals	22-23 Actuals	23-24 Adopted	24-25 Request	Increase	% Increase
Instruction	\$5,801,314	\$6,146,928	\$6,175,394	\$6,310,919	\$6,672,878	\$361,959	5.7%
Admin/Attend&Health	\$59,045	\$76,469	\$75,900	\$114,140	\$174,457	\$60,317	52.8%
Technology	\$105,301	\$72,603	\$42,320	\$131,239	\$123,064	(\$8,175)	-6.2%
Building Services	\$206,787	\$299,577	\$387,860	\$287,993	\$363,585	\$75,592	26.2%
Transportation			\$211				
<b>Total</b>	<b>\$6,172,446</b>	<b>\$6,595,577</b>	<b>\$6,681,685</b>	<b>\$6,844,291</b>	<b>\$7,333,984</b>	<b>\$489,693</b>	<b>7.2%</b>

FTE Summary		23-24 FTE	24-25 FTE
☐ <b>Instruction</b>		<b>68.48</b>	<b>70.81</b>
Assistant Principal		1.00	1.00
Clerical		3.00	3.00
Principal		1.00	1.00
Teacher^		52.48	53.81
Teaching Assistant		11.00	12.00
☐ <b>Admin/Attend&amp;Health</b>		<b>2.00</b>	<b>2.00</b>
Health Clinician			1.00
Nurse		1.00	1.00
Teaching Assistant		1.00	
☐ <b>Technology</b>		<b>1.40</b>	<b>1.25</b>
Other Technical		0.90	0.80
Teacher^		0.50	0.45
☐ <b>Building Services</b>		<b>5.00</b>	<b>6.00</b>
Custodial		5.00	6.00
<b>Total</b>		<b>76.88</b>	<b>80.06</b>

Adjusted FTE^^	70.9	74.1
----------------	------	------

^Positions included within the Teacher category are detailed in Section G – Staffing Allocations.

^^ Teaching Assistants (TAs) are allocated at a 2 TA to 1 Teacher ratio. This adjusted number is the FTE allocation to the school.



# HENLEY MIDDLE SCHOOL

*Home of the Hornets*

## Henley Middle School

### General School Information

- Grades Served: 6-8
- Address: 5880 Rockfish Gap Turnpike, Crozet, VA 22932
- Phone: 434-823-4393
- Principal: LaRuth Ensley

Joseph T. Henley Middle School is deeply committed to ACPS's strategic plan, and we continue to evaluate our curriculum, assessment, and instruction through these lenses and seek to equip all students with the broad range of skills and competencies that will prepare them for high school, college, and the workforce.



### School Quality Profile

For the 2022-23 school year, Henley received a full accreditation status.

For the full School Quality Profile, scan the QR code to the left or visit the [VDOE Henley Middle School Quality Profile](#) web page.



**LaRuth Ensley**  
Principal  
2022-Present

### Student Enrollment

#### Historical Fall Membership

	2021-2022	2022-2023	2023-2024
Total Enrollment	839	808	804
Students with Disabilities	10.3%	12.6%	12.8%
English Learners	2.1%	2.1%	3.2%
Economically Disadvantaged	13.9%	13.4%	13.9%

#### Projections for FY 25 Budget

Projected	
Total Enrollment	837
Economically Disadvantaged	14.4%



### Facility Information

- Built in 1966
- 120,419 square feet
- 30.0-acre site

*Henley Middle School is part of the **Western Feeder Pattern**. Students previously attended Brownsville, Crozet, Ivy, or Murray Elementary School, and will graduate from Western Albemarle High School.*



# HENLEY MIDDLE SCHOOL

## Home of the Hornets

### Henley

Expense	20-21 Actuals	21-22 Actuals	22-23 Actuals	23-24 Adopted	24-25 Request	Increase	% Increase
Salary	\$4,794,950	\$5,357,002	\$5,265,400	\$5,624,486	\$6,113,835	\$489,349	8.7%
Other Wages	\$253,921	\$341,138	\$311,919	\$174,481	\$165,131	(\$9,350)	-5.4%
Benefits	\$1,942,697	\$2,068,463	\$2,079,398	\$2,256,916	\$2,477,161	\$220,245	9.8%
Operations	\$163,435	\$126,934	\$162,112	\$188,352	\$194,539	\$6,187	3.3%
<b>Total</b>	<b>\$7,155,003</b>	<b>\$7,893,537</b>	<b>\$7,818,828</b>	<b>\$8,244,235</b>	<b>\$8,950,666</b>	<b>\$706,431</b>	<b>8.6%</b>

State Category Report	20-21 Actuals	21-22 Actuals	22-23 Actuals	23-24 Adopted	24-25 Request	Increase	% Increase
Instruction	\$6,773,869	\$7,375,003	\$7,225,901	\$7,579,805	\$8,215,528	\$635,723	8.4%
Admin/Attend&Health	\$49,454	\$64,796	\$51,307	\$142,434	\$159,334	\$16,900	11.9%
Technology	\$116,943	\$124,119	\$203,487	\$156,399	\$179,361	\$22,962	14.7%
Building Services	\$214,737	\$329,619	\$337,814	\$365,597	\$396,443	\$30,846	8.4%
Transportation			\$319				
<b>Total</b>	<b>\$7,155,003</b>	<b>\$7,893,537</b>	<b>\$7,818,828</b>	<b>\$8,244,235</b>	<b>\$8,950,666</b>	<b>\$706,431</b>	<b>8.6%</b>

### FTE Summary

	23-24 FTE	24-25 FTE
<b>Instruction</b>	<b>83.70</b>	<b>87.18</b>
Assistant Principal	2.00	2.00
Clerical	3.50	3.50
Principal	1.00	1.00
Teacher^	62.20	63.68
Teaching Assistant	15.00	17.00
<b>Admin/Attend&amp;Health</b>	<b>3.00</b>	<b>2.00</b>
Health Clinician		1.00
Nurse	1.00	1.00
Teaching Assistant	2.00	
<b>Technology</b>	<b>1.50</b>	<b>1.60</b>
Other Technical	0.50	1.00
Teacher^	1.00	0.60
<b>Building Services</b>	<b>6.50</b>	<b>6.64</b>
Custodial	6.50	6.64
<b>Total</b>	<b>94.70</b>	<b>97.42</b>

Adjusted FTE^^	86.2	88.9
----------------	------	------

^Positions included within the Teacher category are detailed in Section G – Staffing Allocations.

^^ Teaching Assistants (TAs) are allocated at a 2 TA to 1 Teacher ratio. This adjusted number is the FTE allocation to the school.

# JOURNEY MIDDLE SCHOOL

*Home of the Jaguars*

## Journey Middle School

### General School Information

- Grades Served: 6-8
- Address: 210 Lambs Lane, Charlottesville, VA 22901
- Phone: 434-975-9320
- Principal: Ashby Johnson

Journey Middle School emphasizes college and career readiness for all. Our students drive their own learning in a culturally responsive environment through advocacy, self-reflection, and a growth mindset to obtain their short-term and long-term goals. Journey's core values include: compassion, connection, equity, growth, and healthy risk-taking.



**Ashby Johnson**  
Principal  
2019-Present



### School Quality Profile

For the 2022-23 school year, Journey received a full accreditation status. For the full School Quality Profile, scan the QR code to the left or visit the [VDOE Journey Middle School Quality Profile](#) web page.

### Student Enrollment

#### Historical Fall Membership

	2021-2022	2022-2023	2023-2024
Total Enrollment	694	634	608
Students with Disabilities	15.9%	14.4%	14.0%
English Learners	22.3%	26.2%	28.5%
Economically Disadvantaged	44.7%	51.7%	48.8%

#### Projections for FY 25 Budget

Projected	
Total Enrollment	626
Economically Disadvantaged	54.5%



### Facility Information

- Built in 1966
- 94,929 square feet
- 20.0-acre site

*Journey Middle School is part of the **Northern Feeder Pattern**. Students previously attended Agnor-Hurt, Greer, Broadus Wood, or Woodbrook Elementary School, and will graduate from Albemarle High School.*

# JOURNEY MIDDLE SCHOOL

## Home of the Jaguars

### Journey

Expense	20-21 Actuals	21-22 Actuals	22-23 Actuals	23-24 Adopted	24-25 Request	Increase	% Increase
Salary	\$4,410,161	\$5,010,736	\$4,728,282	\$5,428,967	\$5,829,038	\$400,071	7.4%
Other Wages	\$172,824	\$249,810	\$348,900	\$157,855	\$185,672	\$27,817	17.6%
Benefits	\$1,717,016	\$1,885,847	\$1,888,910	\$2,175,163	\$2,328,704	\$153,541	7.1%
Operations	\$79,651	\$165,787	\$214,578	\$171,948	\$175,981	\$4,033	2.3%
<b>Total</b>	<b>\$6,379,652</b>	<b>\$7,312,181</b>	<b>\$7,180,670</b>	<b>\$7,933,933</b>	<b>\$8,519,395</b>	<b>\$585,462</b>	<b>7.4%</b>

State Category Report	20-21 Actuals	21-22 Actuals	22-23 Actuals	23-24 Adopted	24-25 Request	Increase	% Increase
Instruction	\$6,040,366	\$6,794,098	\$6,810,470	\$7,436,537	\$7,946,556	\$510,019	6.9%
Admin/Attend&Health	\$48,596	\$70,726	\$59,438	\$102,858	\$163,823	\$60,965	59.3%
Technology	\$108,178	\$164,772	\$30,814	\$94,279	\$163,024	\$68,745	72.9%
Building Services	\$182,513	\$282,585	\$279,434	\$300,259	\$245,992	(\$54,267)	-18.1%
Transportation			\$513				
<b>Total</b>	<b>\$6,379,652</b>	<b>\$7,312,181</b>	<b>\$7,180,670</b>	<b>\$7,933,933</b>	<b>\$8,519,395</b>	<b>\$585,462</b>	<b>7.4%</b>

FTE Summary	23-24 FTE	24-25 FTE
<b>Instruction</b>	<b>80.05</b>	<b>82.05</b>
Assistant Principal	1.00	2.00
Clerical	3.50	3.50
Principal	1.00	1.00
Teacher^	64.05	64.05
Teaching Assistant	10.50	11.50
<b>Admin/Attend&amp;Health</b>	<b>2.00</b>	<b>2.00</b>
Health Clinician		1.00
Nurse	1.00	1.00
Teaching Assistant	1.00	
<b>Technology</b>	<b>1.10</b>	<b>1.55</b>
Other Technical	0.50	1.00
Teacher^	0.60	0.55
<b>Building Services</b>	<b>5.00</b>	<b>4.00</b>
Custodial	5.00	4.00
<b>Total</b>	<b>88.15</b>	<b>89.60</b>

Adjusted FTE^^	82.4	83.9
----------------	------	------

^Positions included within the Teacher category are detailed in Section G – Staffing Allocations.

^^ Teaching Assistants (TAs) are allocated at a 2 TA to 1 Teacher ratio. This adjusted number is the FTE allocation to the school.

# LAKESIDE MIDDLE SCHOOL

*Home of the Sharks*

## Lakeside Middle School

### General School Information

- Grades Served: 6-8
- Address: 2801 Powell Creek Drive, Charlottesville, VA 22911
- Phone: 434-975-0599
- Principal: Michael Craddock

Lakeside Middle School believes that fostering creativity and striving for excellence today prepares students to succeed in the changing and challenging world tomorrow. We are committed to providing our students with high-quality learning experiences that are relevant and meaningful and we firmly believe that supporting students' social and emotional well-being is an integral part of the middle school experience.



**Michael Craddock**  
Principal  
2022-Present



### School Quality Profile

For the 2022-23 school year, Lakeside received a full accreditation status. For the full School Quality Profile, scan the QR code to the left or visit the [VDOE Lakeside Middle School Quality Profile](#) web page.

### Student Enrollment

#### Historical Fall Membership

	2021-2022	2022-2023	2023-2024
Total Enrollment	545	513	520
Students with Disabilities	9.4%	12.3%	11.0%
English Learners	8.6%	10.5%	11.2%
Economically Disadvantaged	19.3%	23.8%	23.8%

#### Projections for FY 25 Budget

Projected	
Total Enrollment	530
Economically Disadvantaged	23.9%



### Facility Information

- Built in 1994
- 94,440 square feet
- 21.0-acre site

*Lakeside Middle School is part of the **Northern Feeder Pattern**. Students previously attended Baker-Butler, Hollymead, or Stony-Point Elementary School, and will graduate from Albemarle High School.*



# LAKESIDE MIDDLE SCHOOL

## Home of the Sharks

### Lakeside

Expense	20-21 Actuals	21-22 Actuals	22-23 Actuals	23-24 Adopted	24-25 Request	Increase	% Increase
Salary	\$3,426,209	\$3,779,970	\$3,831,756	\$4,117,948	\$4,411,740	\$293,792	7.1%
Other Wages	\$119,205	\$203,966	\$227,757	\$119,087	\$133,196	\$14,109	11.8%
Benefits	\$1,394,189	\$1,476,449	\$1,545,910	\$1,645,510	\$1,744,133	\$98,623	6.0%
Operations	\$117,023	\$128,143	\$121,617	\$137,488	\$142,732	\$5,244	3.8%
<b>Total</b>	<b>\$5,056,625</b>	<b>\$5,588,529</b>	<b>\$5,727,040</b>	<b>\$6,020,033</b>	<b>\$6,431,801</b>	<b>\$411,768</b>	<b>6.8%</b>

State Category Report	20-21 Actuals	21-22 Actuals	22-23 Actuals	23-24 Adopted	24-25 Request	Increase	% Increase
Instruction	\$4,741,941	\$5,260,564	\$5,278,866	\$5,561,647	\$5,886,320	\$324,673	5.8%
Admin/Attend&Health	\$40,698	\$60,453	\$72,200	\$100,768	\$179,686	\$78,918	78.3%
Technology	\$77,908	\$71,281	\$109,006	\$103,410	\$112,001	\$8,591	8.3%
Building Services	\$196,079	\$196,231	\$266,660	\$254,208	\$253,794	(\$414)	-0.2%
Transportation			\$309				
<b>Total</b>	<b>\$5,056,625</b>	<b>\$5,588,529</b>	<b>\$5,727,040</b>	<b>\$6,020,033</b>	<b>\$6,431,801</b>	<b>\$411,768</b>	<b>6.8%</b>

FTE Summary		23-24 FTE	24-25 FTE
☐ <b>Instruction</b>		<b>61.02</b>	<b>62.56</b>
Assistant Principal		1.00	1.00
Clerical		3.00	3.00
Principal		1.00	1.00
Teacher^		45.02	45.56
Teaching Assistant		11.00	12.00
☐ <b>Admin/Attend&amp;Health</b>		<b>2.00</b>	<b>2.00</b>
Health Clinician			1.00
Nurse		1.00	1.00
Teaching Assistant		1.00	
☐ <b>Technology</b>		<b>1.10</b>	<b>1.05</b>
Other Technical		0.60	0.60
Teacher^		0.50	0.45
☐ <b>Building Services</b>		<b>4.50</b>	<b>4.50</b>
Custodial		4.50	4.50
<b>Total</b>		<b>68.62</b>	<b>70.11</b>

Adjusted FTE^^	62.6	64.1
----------------	------	------

^Positions included within the Teacher category are detailed in Section G – Staffing Allocations.

^^ Teaching Assistants (TAs) are allocated at a 2 TA to 1 Teacher ratio. This adjusted number is the FTE allocation to the school.

# WALTON MIDDLE SCHOOL

*Home of the Wildcats*

## Walton Middle School

### General School Information

- Grades Served: 6-8
- Address: 4217 Red Hill Road, Charlottesville, VA 22903
- Phone: 434-977-5615
- Principal: Josh Walton

At Walton Middle School, our work is centered around three Guiding Principles, which include fostering a community of safe, responsible and respectful learners that help each other grow academically, emotionally and socially; being welcoming, inclusive and student-centered to ensure that the doors of opportunity are open for all students; and working as a team to foster healthy risk-taking, encourage pursuit of passions, and cultivate a growth mindset with a focus on continuous improvement.



**Josh Walton**  
Principal  
2016-Present



### School Quality Profile

For the 2022-23 school year, Walton received a full accreditation status. For the full School Quality Profile, scan the QR code to the left or visit the [VDOE Walton Middle School Quality Profile](#) web page.

### Student Enrollment

#### Historical Fall Membership

	2021-2022	2022-2023	2023-2024
Total Enrollment	329	340	329
Students with Disabilities	17.9%	18.5%	18.8%
English Learners	4.3%	5.9%	6.7%
Economically Disadvantaged	31.9%	37.9%	38.6%

#### Projections for FY 25 Budget

Projected	
Total Enrollment	327
Economically Disadvantaged	39.6%



### Facility Information

- Built in 1974
- 98,340 square feet
- 50.0-acre site

*Walton Middle School is part of the **Southern Feeder Pattern**. Students previously attended Mountain View, Red Hill, Scottsville, or Stone-Robinson Elementary School, and will graduate from Monticello High School.*

# WALTON MIDDLE SCHOOL

## Home of the Wildcats

### Walton

Expense	20-21 Actuals	21-22 Actuals	22-23 Actuals	23-24 Adopted	24-25 Request	Increase	% Increase
Salary	\$2,960,427	\$3,308,471	\$3,649,602	\$3,726,195	\$3,988,853	\$262,658	7.0%
Other Wages	\$93,094	\$105,298	\$153,967	\$121,865	\$82,926	(\$38,939)	-32.0%
Benefits	\$1,224,836	\$1,298,126	\$1,486,059	\$1,477,720	\$1,606,029	\$128,309	8.7%
Operations	\$89,202	\$118,589	\$116,950	\$100,824	\$114,425	\$13,601	13.5%
<b>Total</b>	<b>\$4,367,559</b>	<b>\$4,830,484</b>	<b>\$5,406,577</b>	<b>\$5,426,604</b>	<b>\$5,792,233</b>	<b>\$365,629</b>	<b>6.7%</b>

State Category Report	20-21 Actuals	21-22 Actuals	22-23 Actuals	23-24 Adopted	24-25 Request	Increase	% Increase
Instruction	\$4,060,639	\$4,522,872	\$5,042,020	\$5,001,658	\$5,287,107	\$285,449	5.7%
Admin/Attend&Health	\$49,707	\$56,918	\$69,781	\$100,407	\$178,782	\$78,375	78.1%
Technology	\$80,086	\$39,118	\$52,080	\$81,866	\$67,923	(\$13,943)	-17.0%
Building Services	\$177,127	\$211,576	\$242,451	\$242,673	\$258,421	\$15,748	6.5%
Transportation			\$246				
<b>Total</b>	<b>\$4,367,559</b>	<b>\$4,830,484</b>	<b>\$5,406,577</b>	<b>\$5,426,604</b>	<b>\$5,792,233</b>	<b>\$365,629</b>	<b>6.7%</b>

FTE Summary	23-24 FTE	24-25 FTE
<b>Instruction</b>	<b>54.40</b>	<b>56.51</b>
Assistant Principal	1.00	1.00
Clerical	3.00	3.00
Principal	1.00	1.00
Teacher^	39.40	39.51
Teaching Assistant	10.00	12.00
<b>Admin/Attend&amp;Health</b>	<b>2.00</b>	<b>2.00</b>
Health Clinician		1.00
Nurse	1.00	1.00
Teaching Assistant	1.00	
<b>Technology</b>	<b>1.00</b>	<b>0.70</b>
Other Technical	0.60	0.50
Teacher^	0.40	0.20
<b>Building Services</b>	<b>4.00</b>	<b>4.00</b>
Custodial	4.00	4.00
<b>Total</b>	<b>61.40</b>	<b>63.21</b>

Adjusted FTE^^	55.9	57.2
----------------	------	------

^Positions included within the Teacher category are detailed in Section G – Staffing Allocations.

^^ Teaching Assistants (TAs) are allocated at a 2 TA to 1 Teacher ratio. This adjusted number is the FTE allocation to the school.

# ALBEMARLE HIGH SCHOOL

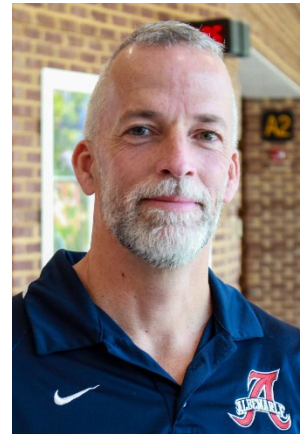
*Home of the Patriots*

## Albemarle High School

### General School Information

- Grades Served: 9-12
- Address: 2775 Hydraulic Road, Charlottesville, VA 22901
- Phone: 434-975-9300
- Principal: Darah Bonham

Albemarle High School serves a diverse cadre of students by providing a quality education with enriching experiences for our students. We strive every day to build trust, ignite enthusiasm, and to partner with our students, families, and community to ensure the best experience for our students and further the goals for our division. By continuing our own lifelong learning, the staff of Albemarle seeks to be open and responsive to all walks of life through a welcoming and inclusive learning environment for all families that make their way through the AHS hallways.



**Darah Bonham**  
Principal  
2019-Present



### School Quality Profile

For the 2022-23 school year, Albemarle High received a full accreditation status. For the full School Quality Profile, scan the QR code to the left or visit the [VDOE Albemarle High School Quality Profile](#) web page.

### Student Enrollment

#### Historical Fall Membership

	2021-2022	2022-2023	2023-2024
Total Enrollment	1911	1993	2013
Students with Disabilities	11.7%	10.5%	11.0%
English Learners	11.2%	13.3%	14.2%
Economically Disadvantaged	27.4%	33.2%	33.4%

#### Projections for FY 25 Budget

Projected	
Total Enrollment	1932
Economically Disadvantaged	35.1%



### Facility Information

- Built in 1953
- 350,103 square feet
- 40.0-acre site

*Albemarle High School is the culminating experience of all Northern Feeder Pattern middle and elementary schools.*

### Career Learning Communities

- Business, Innovation & Entrepreneurship
- Education & Human Development
- Math, Engineering & Sciences



# ALBEMARLE HIGH SCHOOL

## Home of the Patriots

### Albemarle

Expense	20-21 Actuals	21-22 Actuals	22-23 Actuals	23-24 Adopted	24-25 Request	Increase	% Increase
Salary	\$10,976,300	\$11,784,944	\$12,830,509	\$14,668,887	\$15,326,817	\$657,930	4.5%
Other Wages	\$667,091	\$1,035,194	\$1,208,777	\$829,172	\$1,027,440	\$198,268	23.9%
Benefits	\$4,421,471	\$4,575,055	\$5,119,252	\$5,809,691	\$6,014,683	\$204,992	3.5%
Operations	\$475,172	\$633,538	\$778,197	\$739,077	\$731,934	(\$7,143)	-1.0%
<b>Total</b>	<b>\$16,540,034</b>	<b>\$18,028,732</b>	<b>\$19,936,735</b>	<b>\$22,046,827</b>	<b>\$23,100,874</b>	<b>\$1,054,047</b>	<b>4.8%</b>

State Category Report	20-21 Actuals	21-22 Actuals	22-23 Actuals	23-24 Adopted	24-25 Request	Increase	% Increase
Instruction	\$15,617,850	\$16,943,483	\$18,747,442	\$20,662,377	\$21,739,458	\$1,077,081	5.2%
Admin/Attend&Health	\$68,003	\$86,862	\$126,208	\$246,760	\$287,249	\$40,489	16.4%
Technology	\$210,131	\$235,521	\$285,361	\$304,459	\$274,030	(\$30,429)	-10.0%
Building Services	\$644,050	\$762,866	\$777,724	\$833,231	\$800,137	(\$33,094)	-4.0%
<b>Total</b>	<b>\$16,540,034</b>	<b>\$18,028,732</b>	<b>\$19,936,735</b>	<b>\$22,046,827</b>	<b>\$23,100,874</b>	<b>\$1,054,047</b>	<b>4.8%</b>

FTE Summary	23-24 FTE	24-25 FTE
<b>Instruction</b>	<b>207.62</b>	<b>211.45</b>
Assistant Principal	5.00	5.00
Clerical	11.00	12.00
Other Management	2.00	3.00
Other Professional	1.34	1.34
Principal	1.00	1.00
Teacher^	167.28	166.12
Teaching Assistant	20.00	22.99
<b>Admin/Attend&amp;Health</b>	<b>5.00</b>	<b>3.00</b>
Health Clinician		1.00
Nurse	2.00	2.00
Teaching Assistant	3.00	
<b>Technology</b>	<b>3.00</b>	<b>3.00</b>
Other Technical	2.00	2.00
Teacher^	1.00	1.00
<b>Building Services</b>	<b>14.50</b>	<b>12.50</b>
Custodial	14.50	12.50
<b>Total</b>	<b>230.12</b>	<b>229.95</b>

Adjusted FTE^^	218.6	218.5
----------------	-------	-------

^Positions included within the Teacher category are detailed in Section G – Staffing Allocations.

^^ Teaching Assistants (TAs) are allocated at a 2 TA to 1 Teacher ratio. This adjusted number is the FTE allocation to the school.

# MONTICELLO HIGH SCHOOL

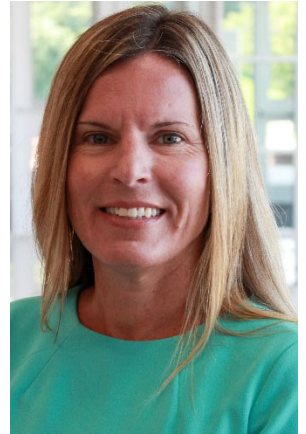
*Home of the Mustangs*

## Monticello High School

### General School Information

- Grades Served: 9-12
- Address: 1400 Independence Way, Charlottesville, VA 22902
- Phone: 434-244-3100
- Principal: Beth Costa

Monticello has always had and continues to have a proud tradition of academics, fine arts, athletics, and extracurricular events. Our core purpose is to establish a community of learners and learning through relationships, relevance, and rigor one student at a time.



**Beth Costa**  
Principal  
2022-Present



### School Quality Profile

For the 2022-23 school year, Monticello received a full accreditation status. For the full School Quality Profile, scan the QR code to the left or visit the [VDOE Monticello High School Quality Profile](#) web page.

### Student Enrollment

#### Historical Fall Membership

	2021-2022	2022-2023	2023-2024
Total Enrollment	1213	1231	1206
Students with Disabilities	14.1%	14.5%	15.5%
English Learners	6.0%	7.0%	7.7%
Economically Disadvantaged	31.2%	35.8%	36.1%

#### Projections for FY 25 Budget

Projected	
Total Enrollment	1140
Economically Disadvantaged	36.5%



### Facility Information

- Built in 1998
- 249,195 square feet
- 70.0-acre site

*Monticello High School is the culminating experience of all **Southern Feeder Pattern** middle and elementary schools.*

### Career Learning Communities

- Geospatial Technologies, Logistics, Robotics & Transportation
- Global Leadership, Law & Social Justice
- Health & Medical Sciences
- Visual Arts

# MONTICELLO HIGH SCHOOL

## Home of the Mustangs

### Monticello

Expense	20-21 Actuals	21-22 Actuals	22-23 Actuals	23-24 Adopted	24-25 Request	Increase	% Increase
Salary	\$7,334,719	\$7,944,597	\$8,954,320	\$9,412,756	\$10,113,252	\$700,496	7.4%
Other Wages	\$541,170	\$758,292	\$892,727	\$686,340	\$674,619	(\$11,721)	-1.7%
Benefits	\$2,935,337	\$3,163,691	\$3,630,613	\$3,722,680	\$3,948,732	\$226,052	6.1%
Operations	\$422,676	\$563,303	\$720,746	\$487,606	\$509,246	\$21,640	4.4%
<b>Total</b>	<b>\$11,233,902</b>	<b>\$12,429,882</b>	<b>\$14,198,406</b>	<b>\$14,309,382</b>	<b>\$15,245,849</b>	<b>\$936,467</b>	<b>6.5%</b>

State Category Report	20-21 Actuals	21-22 Actuals	22-23 Actuals	23-24 Adopted	24-25 Request	Increase	% Increase
Instruction	\$10,521,935	\$11,698,637	\$13,351,390	\$13,317,668	\$14,243,703	\$926,035	7.0%
Admin/Attend&Health	\$61,228	\$81,509	\$79,968	\$154,714	\$178,422	\$23,708	15.3%
Technology	\$169,793	\$92,601	\$140,182	\$205,309	\$192,147	(\$13,162)	-6.4%
Building Services	\$480,946	\$557,135	\$626,865	\$631,691	\$631,577	(\$114)	-0.0%
<b>Total</b>	<b>\$11,233,902</b>	<b>\$12,429,882</b>	<b>\$14,198,406</b>	<b>\$14,309,382</b>	<b>\$15,245,849</b>	<b>\$936,467</b>	<b>6.5%</b>

FTE Summary	23-24 FTE	24-25 FTE
<b>Instruction</b>	<b>135.06</b>	<b>141.16</b>
Assistant Principal	3.00	3.00
Clerical	9.00	10.00
Other Management	2.00	2.00
Other Professional	1.33	1.33
Principal	1.00	1.00
Teacher^	103.73	105.83
Teaching Assistant	15.00	18.00
<b>Admin/Attend&amp;Health</b>	<b>3.00</b>	<b>2.00</b>
Health Clinician		1.00
Nurse	1.00	1.00
Teaching Assistant	2.00	
<b>Technology</b>	<b>2.00</b>	<b>1.80</b>
Other Technical	1.00	1.00
Teacher^	1.00	0.80
<b>Building Services</b>	<b>11.00</b>	<b>10.50</b>
Custodial	11.00	10.50
<b>Total</b>	<b>151.06</b>	<b>155.46</b>

Adjusted FTE^^	142.6	146.5
----------------	-------	-------

^Positions included within the Teacher category are detailed in Section G – Staffing Allocations.

^^ Teaching Assistants (TAs) are allocated at a 2 TA to 1 Teacher ratio. This adjusted number is the FTE allocation to the school.



# WESTERN ALBEMARLE HIGH SCHOOL

*Home of the Warriors*

## Western Albemarle High School

### General School Information

- Grades Served: 9-12
- Address: 5941 Rockfish Gap Turnpike, Crozet, VA 22932
- Phone: 434-823-8700
- Principal: Jennifer Sublette

Western Albemarle High School enjoys a tradition of student success in academics, athletics, and the arts that is a result of a culture of high expectations, supported by the establishment of strong relationships with students and families. Our school community works together to strengthen learning partnerships and expand our support of both academic and social-emotional learning.



**Jennifer Sublette**  
Principal  
2021-Present



### School Quality Profile

For the 2022-23 school year, Western Albemarle received a full accreditation status. For the full School Quality Profile, scan the QR code to the left or visit the [VDOE Western Albemarle High School Quality Profile](#) web page.

### Student Enrollment

#### Historical Fall Membership

	2021-2022	2022-2023	2023-2024
Total Enrollment	1152	1159	1164
Students with Disabilities	11.5%	11.1%	11.1%
English Learners	0.9%	0.9%	1.3%
Economically Disadvantaged	11.5%	12.9%	12.7%

#### Projections for FY 25 Budget

Projected	
Total Enrollment	1151
Economically Disadvantaged	13.5%



### Facility Information

- Built in 1977
- 204,041 square feet
- 75.0-acre site

*Western Albemarle is the culminating experience of all **Western Feeder Pattern** middle and elementary schools.*

### Career Learning Communities

- Hospitality, Eateries, Amusement, Recreation and Tourism
- Environmental Studies
- Architecture, Design & Urban Planning



# WESTERN ALBEMARLE HIGH SCHOOL

## Home of the Warriors

### Western Albemarle

Expense	20-21 Actuals	21-22 Actuals	22-23 Actuals	23-24 Adopted	24-25 Request	Increase	% Increase
Salary	\$6,740,148	\$7,501,013	\$8,260,940	\$8,382,737	\$9,009,516	\$626,779	7.5%
Other Wages	\$467,420	\$701,658	\$699,856	\$634,393	\$612,500	(\$21,893)	-3.5%
Benefits	\$2,634,582	\$2,873,794	\$3,239,233	\$3,341,563	\$3,599,663	\$258,100	7.7%
Operations	\$441,437	\$465,438	\$549,506	\$627,656	\$607,153	(\$20,503)	-3.3%
<b>Total</b>	<b>\$10,283,586</b>	<b>\$11,541,903</b>	<b>\$12,749,535</b>	<b>\$12,986,349</b>	<b>\$13,828,832</b>	<b>\$842,483</b>	<b>6.5%</b>

State Category Report	20-21 Actuals	21-22 Actuals	22-23 Actuals	23-24 Adopted	24-25 Request	Increase	% Increase
Instruction	\$9,614,865	\$10,754,271	\$11,864,886	\$12,100,182	\$12,829,158	\$728,976	6.0%
Admin/Attend&Health	\$78,423	\$80,838	\$58,049	\$140,947	\$155,540	\$14,593	10.4%
Technology	\$153,312	\$151,295	\$205,404	\$194,844	\$198,686	\$3,842	2.0%
Building Services	\$436,986	\$555,499	\$621,197	\$550,376	\$645,448	\$95,072	17.3%
<b>Total</b>	<b>\$10,283,586</b>	<b>\$11,541,903</b>	<b>\$12,749,535</b>	<b>\$12,986,349</b>	<b>\$13,828,832</b>	<b>\$842,483</b>	<b>6.5%</b>

FTE Summary	23-24 FTE	24-25 FTE
<b>Instruction</b>	<b>121.92</b>	<b>126.45</b>
Assistant Principal	3.00	3.00
Clerical	9.00	9.00
Other Management	3.00	2.00
Other Professional	0.33	1.33
Principal	1.00	1.00
Teacher^	88.59	91.12
Teaching Assistant	17.00	19.00
<b>Admin/Attend&amp;Health</b>	<b>3.00</b>	<b>2.00</b>
Health Clinician		1.00
Nurse	1.00	1.00
Teaching Assistant	2.00	
<b>Technology</b>	<b>2.00</b>	<b>1.85</b>
Other Technical	1.00	1.00
Teacher^	1.00	0.85
<b>Building Services</b>	<b>9.60</b>	<b>10.00</b>
Custodial	9.60	10.00
<b>Total</b>	<b>136.52</b>	<b>140.30</b>

Adjusted FTE^^	127.0	130.8
----------------	-------	-------

^Positions included within the Teacher category are detailed in Section G – Staffing Allocations.

^^ Teaching Assistants (TAs) are allocated at a 2 TA to 1 Teacher ratio. This adjusted number is the FTE allocation to the school.

# COMMUNITY LAB SCHOOL

## Community Lab School

### General School Information

- Grades Served: 6-12
- Address: 1200 Forest Street, Charlottesville, VA 22903
- Phone: 434-296-3090
- Principal: Chad Ratliff

At Community Lab School, we cultivate the intellectual and creative capabilities of each student by providing an empowering, inquiry-driven education that is both rigorous and student-centered. ACPS' charter school aims to foster creativity and intellectual curiosity through art and design, experiential learning, mastery, and student agency. CLS is also an International Baccalaureate (IB) World School, offering the Diploma Program to ACPS 11th and 12th graders.



**Chad Ratliff**  
Principal  
2017-Present



### School Quality Profile

For the 2022-23 school year, Community Lab School received a full accreditation status. For the full School Quality Profile, scan the QR code to the left or visit the [VDOE Community Lab School Quality Profile](#) web page.

### Student Enrollment

#### Historical Fall Membership

	2021-2022	2022-2023	2023-2024
Total Enrollment	194	192	179
Students with Disabilities	19.6%	19.8%	15.1%
English Learners	2.1%	2.6%	2.2%
Economically Disadvantaged	4.6%	7.8%	5.6%

#### Projections for FY 25 Budget

Projected	
Total Enrollment	189
Economically Disadvantaged	24.0%



### Facility Information

- Built in 1959
- 30,915 square feet
- 7.1-acre site

*Albemarle County Public Schools' charter school serves middle and high school students from all three feeder patterns through an admissions process. Murray High School began serving high school students in 1988, while the Community Public Charter School opened to middle school students in 2008. The two schools merged into one charter school in 2020.*

### Career Learning Communities

- International Baccalaureate Program (IB)

# COMMUNITY LAB SCHOOL

## Community Lab School

Expense	20-21 Actuals	21-22 Actuals	22-23 Actuals	23-24 Adopted	24-25 Request	Increase	% Increase
Salary	\$1,616,739	\$1,846,843	\$1,756,167	\$2,104,966	\$2,207,444	\$102,478	4.9%
Other Wages	\$53,726	\$84,347	\$103,466	\$49,799	\$30,186	(\$19,613)	-39.4%
Benefits	\$632,632	\$681,138	\$698,468	\$838,367	\$861,392	\$23,025	2.7%
Operations	\$81,362	\$91,929	\$89,963	\$71,779	\$74,389	\$2,610	3.6%
<b>Total</b>	<b>\$2,384,459</b>	<b>\$2,704,257</b>	<b>\$2,648,065</b>	<b>\$3,064,911</b>	<b>\$3,173,411</b>	<b>\$108,500</b>	<b>3.5%</b>

State Category Report	20-21 Actuals	21-22 Actuals	22-23 Actuals	23-24 Adopted	24-25 Request	Increase	% Increase
Instruction	\$2,175,786	\$2,513,230	\$2,458,613	\$2,820,527	\$2,848,780	\$28,253	1.0%
Admin/Attend&Health	\$47,107	\$50,255	\$40,691	\$103,350	\$167,450	\$64,100	62.0%
Technology	\$37,061	\$23,789	\$31,614	\$29,511	\$29,280	(\$231)	-0.8%
Building Services	\$124,506	\$116,983	\$117,148	\$111,523	\$127,901	\$16,378	14.7%
<b>Total</b>	<b>\$2,384,459</b>	<b>\$2,704,257</b>	<b>\$2,648,065</b>	<b>\$3,064,911</b>	<b>\$3,173,411</b>	<b>\$108,500</b>	<b>3.5%</b>

FTE Summary	23-24 FTE	24-25 FTE
<b>Instruction</b>	<b>27.81</b>	<b>27.81</b>
Assistant Principal	1.00	1.00
Clerical	2.00	2.00
Other Management		1.00
Principal	1.00	1.00
Teacher^	21.81	19.81
Teaching Assistant	2.00	3.00
<b>Admin/Attend&amp;Health</b>	<b>2.00</b>	<b>2.00</b>
Health Clinician		1.00
Nurse	1.00	1.00
Teaching Assistant	1.00	
<b>Technology</b>	<b>0.40</b>	<b>0.30</b>
Other Technical	0.10	0.20
Teacher^	0.30	0.10
<b>Building Services</b>	<b>2.00</b>	<b>2.00</b>
Custodial	2.00	2.00
<b>Total</b>	<b>32.21</b>	<b>32.11</b>

Adjusted FTE^^	30.7	30.6
----------------	------	------

^Positions included within the Teacher category are detailed in Section G – Staffing Allocations.

^^ Teaching Assistants (TAs) are allocated at a 2 TA to 1 Teacher ratio. This adjusted number is the FTE allocation to the school.



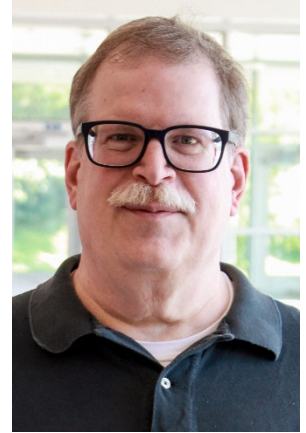
# CENTER I

## Center I

### General Information

- Address: 1180 Seminole Trail, Suite 225, Charlottesville, VA 22901
- Phone: 434-244-8900
- Director: Jeff Prillaman

Center I is Albemarle County Public School's high school specialty center that hosts an Information and Communication Technology learning community. As a learning center designed to support students exploring their passions and interests, the student experience over three years evolves from introductory coursework to capstone projects that include self-directed and work-based learning experiences. The passion, problem, and project-based approach to instruction bring together both elective course work within the ICT field along with academic courses to ensure students see purpose and relevance in their work at Center I.



**Jeff Prillaman**  
Director  
2022-Present

Center I serves students in grades 10, 11, and 12 within the ICT learning community while also continuing to offer a range of experiences for students in their senior year. On a collegiate schedule, with college faculty, students can elect to sign up for Composition I and II and US Government I and II to meet their English 12 and US/VA Government graduation requirements. Students can also participate in a self-directed learning experience where, with the support of Center I faculty, they can complete a Senior Capstone Project in an area of interest. A Senior Capstone Project can focus on one large project or be composed of several smaller ones. The outcomes of the project are determined by the student and may include high school course credit, earning an industry-recognized credential, participation in a work-based learning experience, and/or completion of a robust portfolio to support career and college aspirations.

### Student Enrollment<sup>3</sup>

#### Historical Enrollment

	2020-2021	2021-2022	2022-2023
Daily Enrollment	55	76	99

#### Projections for FY 25 Budget

Projected	
Daily Enrollment	120
Economically Disadvantaged	28.2%



### Facility Information

- Opened in 2018
- 42,274 square feet (all programs)
- Located in the Seminole Place complex

### Career Learning Communities

- Information & Communication Technology

<sup>3</sup> Enrollment shown is daily enrollment. Total student enrollment is double the daily enrollment.  
School Locations: D-60



# CENTER I

## Center I

Expense	20-21 Actuals	21-22 Actuals	22-23 Actuals	23-24 Adopted	24-25 Request	Increase	% Increase
Salary	\$346,578	\$502,938	\$803,017	\$935,661	\$929,311	(\$6,350)	-0.7%
Other Wages	\$7,260	\$18,033	\$33,158	\$27,913	\$25,088	(\$2,825)	-10.1%
Benefits	\$128,558	\$188,072	\$314,837	\$348,656	\$347,494	(\$1,162)	-0.3%
Operations	\$34,775	\$64,470	\$670,587	\$63,877	\$68,891	\$5,014	7.8%
<b>Total</b>	<b>\$517,171</b>	<b>\$773,512</b>	<b>\$1,821,600</b>	<b>\$1,376,107</b>	<b>\$1,370,784</b>	<b>(\$5,323)</b>	<b>-0.4%</b>

State Category Report	20-21 Actuals	21-22 Actuals	22-23 Actuals	23-24 Adopted	24-25 Request	Increase	% Increase
Instruction	\$491,751	\$728,552	\$1,162,071	\$1,263,788	\$1,245,656	(\$18,132)	-1.4%
Admin/Attend&Health	\$25,420	\$44,961	\$45,534	\$47,756	\$54,415	\$6,659	13.9%
Building Services			\$613,996	\$64,563	\$70,713	\$6,150	9.5%
<b>Total</b>	<b>\$517,171</b>	<b>\$773,512</b>	<b>\$1,821,600</b>	<b>\$1,376,107</b>	<b>\$1,370,784</b>	<b>(\$5,323)</b>	<b>-0.4%</b>

FTE Summary	23-24 FTE	24-25 FTE
<input type="checkbox"/> <b>Instruction</b>	<b>12.66</b>	<b>11.99</b>
Clerical	1.00	1.00
Principal	1.00	1.00
Teacher^	9.66	8.99
Teaching Assistant	1.00	1.00
<input type="checkbox"/> <b>Admin/Attend&amp;Health</b>	<b>1.00</b>	<b>1.00</b>
Nurse	1.00	1.00
<input type="checkbox"/> <b>Building Services</b>	<b>1.00</b>	<b>1.00</b>
Custodial	1.00	1.00
<b>Total</b>	<b>14.66</b>	<b>13.99</b>

Adjusted FTE^^	14.2	13.5
----------------	------	------

^Positions included within the Teacher category are detailed in Section G – Staffing Allocations.

^^ Teaching Assistants (TAs) are allocated at a 2 TA to 1 Teacher ratio. This adjusted number is the FTE allocation to the school.

# POST HIGH

## Post High

### General Information

- Address: 915 Henry Avenue, Charlottesville, VA 22903
- Phone: 434-977-4610
- Coordinator: Emily Blase

Post High serves 18 to 22-year-old students with a variety of special capacities. The Post High program is designed to provide supported transitions from the traditional school setting to an adult life in the community. Students receive instruction in employment skills, functional academic skills, social skills, and independent living skills according to an individualized education plan. The Post High staff work closely with the students, their families, and appropriate adult service agencies to facilitate a positive transition.



**Emily Blase**  
Coordinator  
2022-Present

Post High's specialized instruction includes focuses on:

- Vocational Skills — Developing the ability to secure, maintain and be successful in the workplace and on the job.
- Functional Academic Skills — Continuing to develop academic achievement in the context of everyday life.
- Social Skills — Increasing the capacity to engage peers, family and people in the community and workplace through communication and behaviors that promote positive relationships.
- Independent Living Skills — Learning and practicing competencies needed to experience a rewarding and productive life while engaging the community in which we live.

Prior to FY 2020/21, this budget was previously shown as part of *Albemarle High School*.

### Student Enrollment

#### Historical Fall Membership

	2021-2022	2022-2023	2023-2024
Total Enrollment	22	28	26

#### Projections for FY 25 Budget

Projected	
Total Enrollment	36



### Facility Information

- Opened in 2002
- 2,350 square feet
- Located behind Burley Middle School

# POST HIGH

## Post High

Expense	20-21 Actuals	21-22 Actuals	22-23 Actuals	23-24 Adopted	24-25 Request	Increase	% Increase
Salary	\$268,972	\$322,220	\$372,052	\$496,335	\$590,699	\$94,364	19.0%
Other Wages	\$7,283	\$9,000	\$10,885				
Benefits	\$143,161	\$152,400	\$172,500	\$218,155	\$255,969	\$37,814	17.3%
<b>Total</b>	<b>\$419,416</b>	<b>\$483,620</b>	<b>\$555,437</b>	<b>\$714,490</b>	<b>\$846,668</b>	<b>\$132,178</b>	<b>18.5%</b>

State Category Report	20-21 Actuals	21-22 Actuals	22-23 Actuals	23-24 Adopted	24-25 Request	Increase	% Increase
Instruction	\$419,416	\$483,620	\$555,437	\$714,490	\$846,668	\$132,178	18.5%
<b>Total</b>	<b>\$419,416</b>	<b>\$483,620</b>	<b>\$555,437</b>	<b>\$714,490</b>	<b>\$846,668</b>	<b>\$132,178</b>	<b>18.5%</b>

FTE Summary	23-24 FTE	24-25 FTE
☐ Instruction	12.00	13.00
Teacher^	4.00	5.00
Teaching Assistant	8.00	8.00
<b>Total</b>	<b>12.00</b>	<b>13.00</b>

Adjusted FTE^^	8.0	9.0
----------------	-----	-----

^ Positions included within the Teacher category are detailed in Section G – Staffing Allocations.

^^ Teaching Assistants (TAs) are allocated at a 2 TA to 1 Teacher ratio. This adjusted number is the FTE allocation to the school.

^^^ Prior to 21-22 this budget was included in as part of Albemarle High School.

# CENTER FOR LEARNING & GROWTH

## Center for Learning & Growth

### General Information

- Address: 225 Lambs Lane, Charlottesville, VA 22901
- Phone: 434-974-8070
- Coordinator: Kevin Kirst

The Center for Learning and Growth is the ACPS alternative learning program. The program recognizes that a restorative approach to the referral concerns, continued instruction and maintaining a connection to the student's neighborhood school is critical to the success of any specialized short-term intervention to ensure student success. Specialized support to individual students that require an alternative learning plan is available via a Superintendent referral for students in grades 6 through 12.

The staff provides a warm and welcoming experience for the students they serve. Students served by the Center for Learning and Growth are offered the opportunity to work through the events that led to their referral in a restorative context while continuing their learning with additional support that includes a blend of face-to-face instruction and computer-based instruction. The program offers the services of a caring staff who collaborate with each student's base school, including family and community partners to wrap around the student to meet the instructional, social and emotional needs of each student. Students eligible for services by the Center for Learning and Growth are typically determined by the Director of Student Services in cooperation with the school principal, parent, and student. Student referrals for services are also made through the Office of the Superintendent and as a result of School Board action.

Prior to FY 2021-22, this budget was previously included within Other Multi-School Services.

#### Center For Learning & Growth

Expense	20-21 Actuals	21-22 Actuals	22-23 Actuals	23-24 Adopted	24-25 Request	Increase	% Increase
Salary	\$141,230	\$280,688	\$239,002	\$297,503	\$367,667	\$70,164	23.6%
Other Wages	\$4,000	\$4,000	\$3,000				
Benefits	\$51,693	\$102,761	\$83,924	\$110,010	\$130,701	\$20,691	18.8%
<b>Total</b>	<b>\$196,923</b>	<b>\$387,448</b>	<b>\$325,926</b>	<b>\$407,513</b>	<b>\$498,368</b>	<b>\$90,855</b>	<b>22.3%</b>

State Category Report	20-21 Actuals	21-22 Actuals	22-23 Actuals	23-24 Adopted	24-25 Request	Increase	% Increase
Instruction	\$196,923	\$387,448	\$325,926	\$407,513	\$423,882	\$16,369	4.0%
Building Services					\$74,486	\$74,486	
<b>Total</b>	<b>\$196,923</b>	<b>\$387,448</b>	<b>\$325,926</b>	<b>\$407,513</b>	<b>\$498,368</b>	<b>\$90,855</b>	<b>22.3%</b>

FTE Summary	23-24 FTE	24-25 FTE
☐ Instruction	4.34	4.34
Teacher^	4.34	4.34
☐ Building Services		1.25
<b>Total</b>	<b>4.34</b>	<b>5.59</b>
Adjusted FTE^^	4.3	5.6

^ Positions included within the Teacher category are detailed in Section G – Staffing Allocations.

^^ Teaching Assistants (TAs) are allocated at a 2 TA to 1 Teacher ratio. This adjusted number is the FTE allocation to the school.



# NEWCOMER LEARNING COMMUNITY

## Newcomer Learning Community (NLC)

### General Information

- Address: Boys & Girls Club Albemarle Campus, 195 Lambs Lane, Charlottesville, VA 22901
- Phone: 434-978-3475
- On-Site Administration: Keary Ritchie

The Newcomer Learning Community is a new programming option for students who are in their first year of attending school in the United States and in acquiring English. Students in this program are in grades 6-12, with one middle school cohort and two high school cohorts. Students take their content classes at the NLC with dual certified- ESOL teachers or in co-taught settings, taking math and English Language Arts daily and social studies and sciences on alternating days. Students in the NLC are working to prepare to be integrated into their base school for non-sheltered instruction by either the end of the semester or the following year, and students are equipped with the foundation and skills necessary to take their elective courses daily at their base school.

The NLC is housed in the Albemarle County Boys and Girls Club through a partnership with the club.

### Student Enrollment: Fall Membership

	August 23	Sept. 30	October 31	November 30	December 30
Total MS Enrollment	8	16	18	21	23
Total HS Enrollment	14	34	36	41	43
Total Enrollment	22	50	54	62	66

### Student Demographics

- 4 home languages
- 12 countries

### Staff Demographics

- 4 instructional staff
- 1 non-instructional staff (will increase to 2 in FY 25)

### Facility Information

- Albemarle Campus Boys & Girls Club
- Built in 2023
- 52,000 square feet
- 40.0-acre site

# NEWCOMER LEARNING COMMUNITY

## Newcomer Learning Community

Expense	20-21 Actuals	21-22 Actuals	22-23 Actuals	23-24 Adopted	24-25 Request	Increase	% Increase
Salary					\$326,556	\$326,556	
Benefits					\$134,630	\$134,630	
<b>Total</b>					<b>\$461,186</b>	<b>\$461,186</b>	

State Category Report	20-21 Actuals	21-22 Actuals	22-23 Actuals	23-24 Adopted	24-25 Request	Increase	% Increase
Instruction					\$461,186	\$461,186	
<b>Total</b>					<b>\$461,186</b>	<b>\$461,186</b>	

FTE Summary	23-24 FTE	24-25 FTE
☐ Instruction		<b>4.50</b>
Social Worker		3.50
Teacher^		1.00
<b>Total</b>		<b>4.50</b>

Adjusted FTE^^	0.0	4.5
----------------	-----	-----

^Positions included within the Teacher category are detailed in Section G – Staffing Allocations.

^^ Teaching Assistants (TAs) are allocated at a 2 TA to 1 Teacher ratio. This adjusted number is the FTE allocation to the school.

## Other Multi-School Services

This area is for staff that are typically assigned to schools throughout the year but are not yet currently assigned to a specific school. Examples of this include emergency staffing and some new proposals. They are assigned throughout the year to meet specific needs at individual schools.

### Multi-School Services

Expense	20-21 Actuals	21-22 Actuals	22-23 Actuals	23-24 Adopted	24-25 Request	Increase	% Increase
Salary	\$3,769,402	\$3,833,307	\$4,471,351	\$8,050,741	\$9,378,466	\$1,327,725	16.5%
Other Wages	\$173,422	\$348,756	\$354,962	\$210,451	\$325,773	\$115,322	54.8%
Benefits	\$2,419,286	\$3,500,277	\$3,886,047	\$4,140,813	\$4,864,848	\$724,035	17.5%
Operations		\$6,594			\$3,800	\$3,800	
<b>Total</b>	<b>\$6,362,110</b>	<b>\$7,688,933</b>	<b>\$8,712,359</b>	<b>\$12,402,005</b>	<b>\$14,572,887</b>	<b>\$2,170,882</b>	<b>17.5%</b>

State Category Report	20-21 Actuals	21-22 Actuals	22-23 Actuals	23-24 Adopted	24-25 Request	Increase	% Increase
Instruction	\$5,055,282	\$4,099,920	\$4,601,204	\$9,877,594	\$11,582,121	\$1,704,527	17.3%
Admin/Attend&Health	\$1,146,503	\$3,463,117	\$3,853,901	\$1,520,785	\$1,811,001	\$290,216	19.1%
Technology	\$69,153	\$6,594	\$98,920	\$96,956	\$112,956	\$16,000	16.5%
Building Services	\$91,172	\$119,302	\$158,334	\$906,670	\$1,066,809	\$160,139	17.7%
<b>Total</b>	<b>\$6,362,110</b>	<b>\$7,688,933</b>	<b>\$8,712,359</b>	<b>\$12,402,005</b>	<b>\$14,572,887</b>	<b>\$2,170,882</b>	<b>17.5%</b>

FTE Summary	23-24 FTE	24-25 FTE
<b>Instruction</b>	<b>89.55</b>	<b>110.87</b>
Assistant Principal - Intern	2.00	2.00
Clerical	1.00	1.00
Other Professional	8.00	8.00
Teacher^	68.55	86.87
Teaching Assistant	10.00	13.00
<b>Admin/Attend&amp;Health</b>	<b>14.20</b>	<b>17.20</b>
Health Clinician		3.00
Psychologist	14.20	14.20
<b>Technology</b>	<b>1.00</b>	<b>1.00</b>
Other Technical	1.00	1.00
<b>Building Services</b>	<b>16.06</b>	<b>16.50</b>
Custodial	16.06	16.50
<b>Total</b>	<b>120.81</b>	<b>145.57</b>

Adjusted FTE^^	115.8	139.1
----------------	-------	-------

^Positions included within the Teacher category are detailed in Section G – Staffing Allocations.

^^ Teaching Assistants (TAs) are allocated at a 2 TA to 1 Teacher ratio. This adjusted number is the FTE allocation to the school.

## Other Multi-School Services

### **Multi-School FTEs**

2.0	Intervention Teachers
1.0	Fiscal Trainer (Clerical)
45.65	Special Education Specialists
5.0	Special Education Growth
6.0	English Learner Growth (5) and Holdback (1)
10.0	Reading and Math Interventionists Proposal
6.0	Social Emotional Supports Proposal Holdback
3.0	Preschool Holdback for Redistricting
14.2	Psychologists
8.0	Student Safety Coaches
2.0	Assistant Principal Interns
1.0	SEAD Teachers
3.75	Emergency Staffing Teachers
3.47	Reduce Class Loads Teachers
16.5	Custodians
2.0	Early Childhood Special Education Teachers (Pre-school)
3.5	CATEC
5.0	School-Based Substitutes Holdback
1.0	Technology Support Specialist
<b>139.1</b>	