

Bellevue School District Preschool Open House



Agenda



01

Program Offerings

02

A Day in
Preschool

03

Curriculum

04

Frequently Asked
Questions



05

Registration
Dates

06

Contact
Information

Bellevue School District Preschool Program Offerings

2024-2025 Locations:

Ardmore^
Bennett
Clyde Hill^
Enatai
Jing Mei
Lake Hills
Medina
Newport Heights^
Phantom Lake^
Puesta del Sol
Sherwood Forest
Stevenson^
Woodridge^

^half-day program offered

Full-day Program — 6.5 hour day

Half-day Program — 3 hour day

Program Fees:

\$500 – Non-Refundable Deposit
(applied to first month tuition)

\$100 – Yearly administration fee

\$100 – Yearly materials fee

In District Tuition

Full-day - \$1375

Half-day - \$650

Full-day SPED - \$671

Out of District Tuition

Full-day - \$1575

Half-day - \$780

BSD Staff Tuition

Full-day - \$1100

Half-day - \$520

Full-day SPED- \$537

Sample Daily Schedule

Table Tasks & Snack

Morning Meeting

Free Choice & Small Groups

Literacy Circle

Lunch

Recess

Story Time

Quiet Time

Snack

Math Circle

Free Choice

End of Day Circle



Curriculum

Creative Curriculum (core)



Second Step (social emotional)

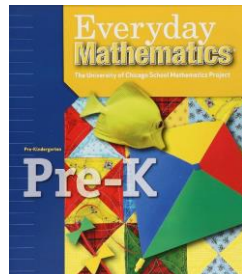


Heggerty (phonemic awareness)

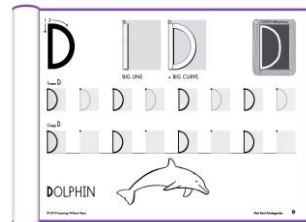


| 2 WORDS | WHOLE WORD |
|-----------|--------------|
| rainbow | rain - bow |
| raindrop | rain - drop |
| raincoat | rain - coat |
| rainstorm | rain - storm |

Everyday Mathematics (math)



Handwriting Without Tears (writing/phonics)



Pyramid Model (positive behavior supports)

NCFM The Turtle Technique



Frequently Asked Questions






Meals and Snacks

What lunch is provided for preschoolers?

- School lunch is available for all students preschool-5th grade for charge.

What snacks are provided?

- One additional snack is provided every day. Students can bring additional snacks from home if they would like.
- 




Nap Time

Is there a nap time daily?

- There is a daily rest time offered to all students for at least 30 minutes/day.

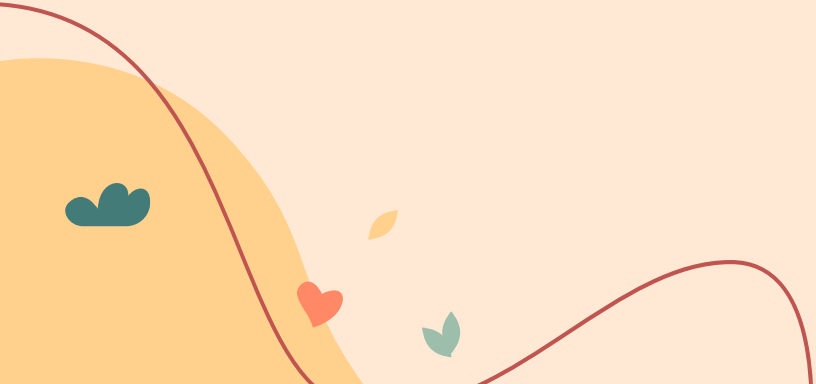
What if my child doesn't nap?

- Quiet activities will be provided for your child if they do not want to nap (small group activities with a teacher, books, quiet games, coloring activities).
- 



Toileting

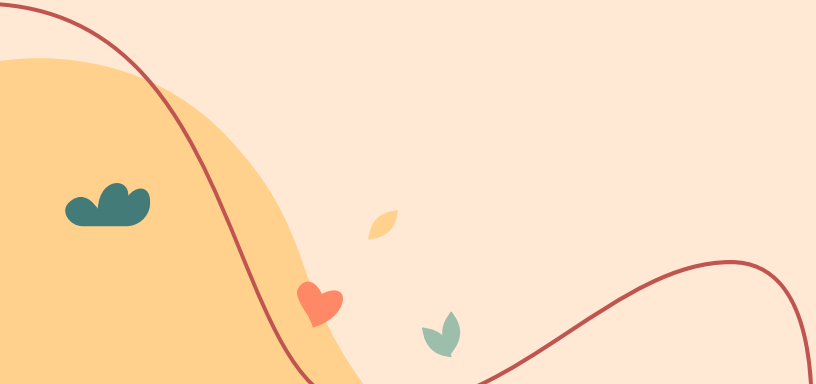
Does my student need to be potty trained?

- No. We understand that potty training is a journey and most 3–4-year-olds are still working on being independent in the restroom. Our trained staff will help your student become independent in the restroom when they are showing readiness indicators.
- 



Teacher Ratios

How many kids will be in each classroom?

- In each classroom we will have 1 Lead Teacher and 1 Assistant Teacher with no more than 20 students. Some classrooms may have more teachers based on student needs.
- 



Before and After Care Options

What before and after care options are available?

- Community partners (Right at School) will be offering childcare options at various locations.

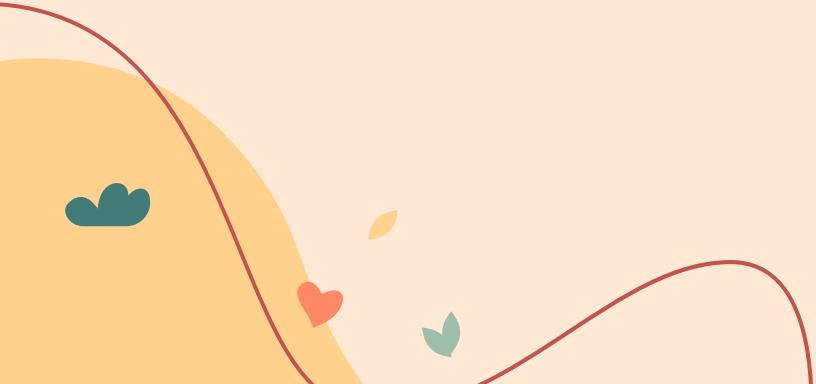
Will there be diapering/toileting assistance?

- Yes, community partners will help with diapering with pull-ups only.
- 

Enrollment



What if my preferred location(s) are not available?

- You will be placed on the waitlist for your location(s) of choice if the classrooms are already fully enrolled. If there is an opening later in the school year, you will receive a phone call from the Preschool Office.
- 

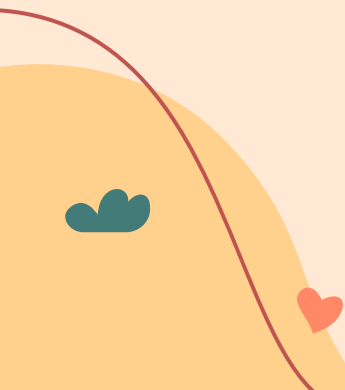
Withdrawing



What happens if I need to withdraw my child from Preschool?

- A 30-day written notification prior to start of the quarter is required. Withdraws must go directly through the Preschool Office. Communicating with your child's teacher or school office does not count as a formal notice of withdraw

| Tuition Month | Due Date |
|---|---------------------------|
| Quarter 1 [withdraw by or before August 1st] | |
| September | September 1 st |
| Quarter 2 [withdraw by or before September 1st] | |
| October | October 1 st |
| November | November 1 st |
| December | December 1 st |
| Quarter 3 [withdraw by or before December 1st] | |
| January | January 1 st |
| February | February 1 st |
| March | March 1 st |
| Quarter 4 [withdraw by or before March 1st] | |
| April | April 1 st |
| May | May 1 st |
| June | June 1 st |



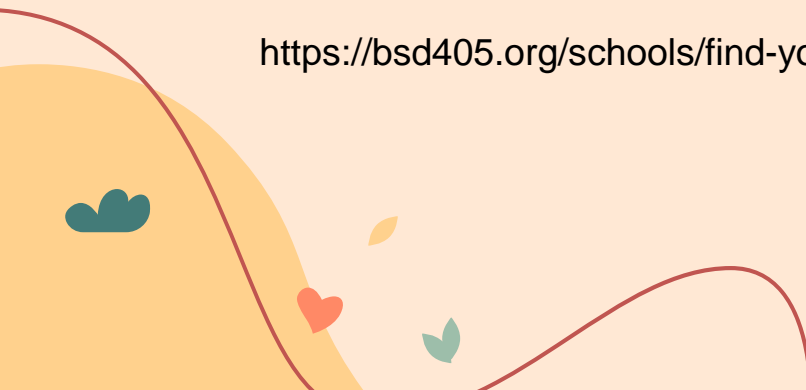
Local School



I want my child to go to Preschool at the same school where they will attend Kindergarten. How do I know which school that is?

- Here in our program, we believe having your child attend Preschool at their local school is best if that site is available. Use the following link to find out what your local school is.

<https://bsd405.org/schools/find-your-school/>



Preschool Enrollment

Registration Dates:

- Returning Families – January 22nd
- BSD Staff – February 5th
- **New Families – February 12th**





Bellevue School District Early Learning Contact Information

Phone: (425) 456-4030

E-mail: PreschoolOffice@bsd405.org

Website: <https://bsd405.org/programs/preschool/>



Visit our website here!



BSD Preschool Quick Links

BSD Preschool Website



Preschool Family Handbook



2024-2025 District Calendar



Preschool FAQ's



Questions?



Kellea Taylor
Director of Early Learning
425-456-4230
TaylorK@bsd405.org