

Central Point SD 6

Student Group Data for 5 Common Metrics

4 Year Graduation: 2016-17 - 2020-21 (pages 2 - 4)
5 Year Completion: 2016-17 - 2020-21 (pages 5 - 7)
9th Grade on Track: 2016-17 - 2021-22 (pages 8 - 10)
Regular Attenders: 2016-17 - 2021-22 (pages 11 - 14)
3rd Grade ELA: 2015-16 - 2021-22 (pages 15 - 17)

SUPPRESSED

These data are provided to increase shared understanding and support engagement with communities, particularly focal student groups and their families, to establish and maintain a strategic plan to support student learning, well-being, and development. The data will also be useful to inform the development of Longitudinal Performance Growth Targets.

The *Integrated Guidance For Six ODE Initiatives* (<https://www.oregon.gov/ode/studentssuccess/pages/innovation-and-improvement.aspx>) has more information on effective use of these data as well as a better picture of the challenges that focal group students face in their educational journey.

Each applicant under the integrated guidance is required to review disaggregated data in this form as part of their planning process.

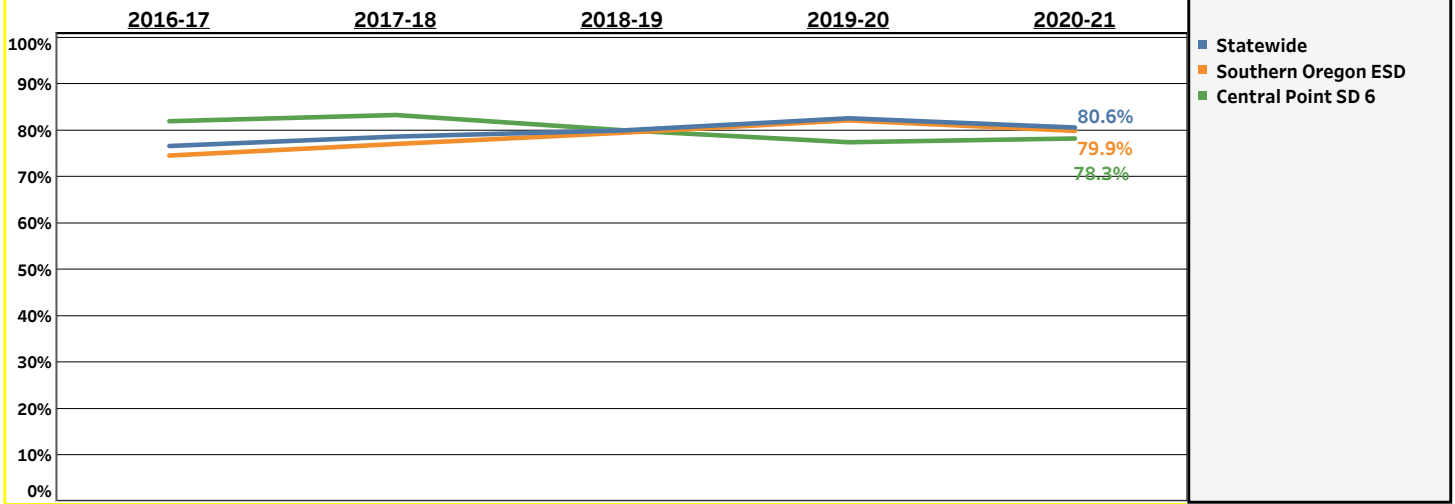
Each file will either have suppressed or unsuppressed data; suppressed data are ready for conversations with the public (can be used in community engagement, board presentations, etc.) while **unsuppressed data contains potentially identifiable information that is not for public use**. Unsuppressed data must only be shared securely on a "need to know" basis, and needs to be stored in secure locations.

See the end notes (page 18) to understand the data sources, how suppressed information is displayed (96%/4%), student group inclusion rules, and why you have missing data for some indicators/years.

Release Date: November, 2022

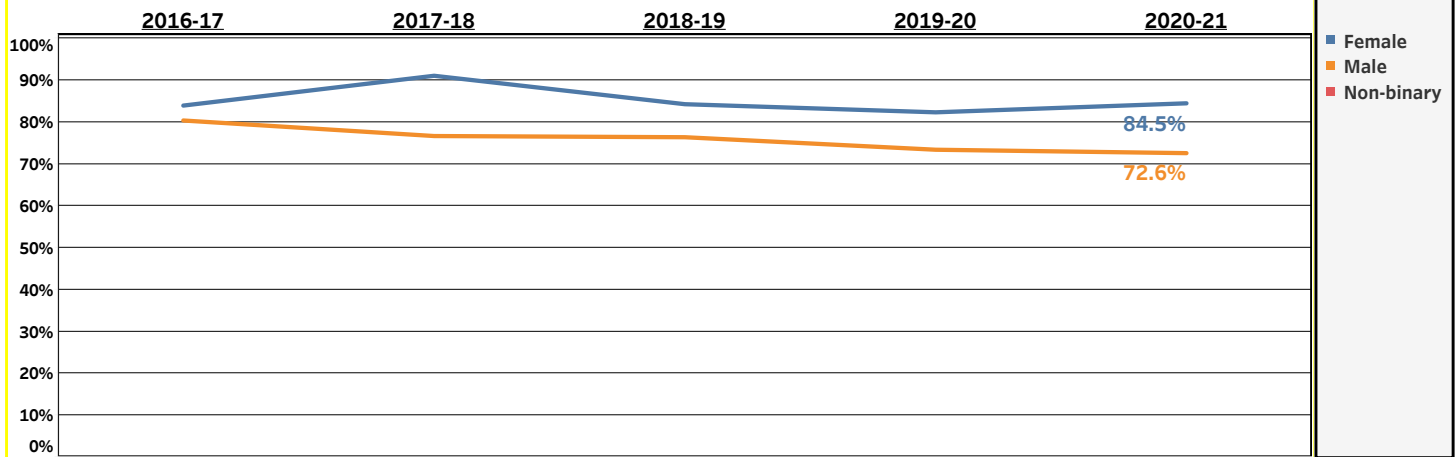
Central Point SD 6

Four Year Graduation Rate by STATE, ESD, and DISTRICT or SCHOOL



		2016-17	2017-18	2018-19	2019-20	2020-21	Average	Trend
Central Point SD 6	Students Meeting Metric	255	260	249	220	245		
	All Students in Cohort	311	312	311	284	313		
	Rate	82.0%	83.3%	80.1%	77.5%	78.3%	80.3%	-1.3%
Southern Oregon ESD	Students Meeting Metric							
	All Students in Cohort							
	Rate	74.6%	77.1%	79.5%	82.2%	79.9%	78.6%	1.6%
Statewide	Students Meeting Metric							
	All Students in Cohort							
	Rate	76.7%	78.7%	80.0%	82.6%	80.6%	79.7%	1.2%

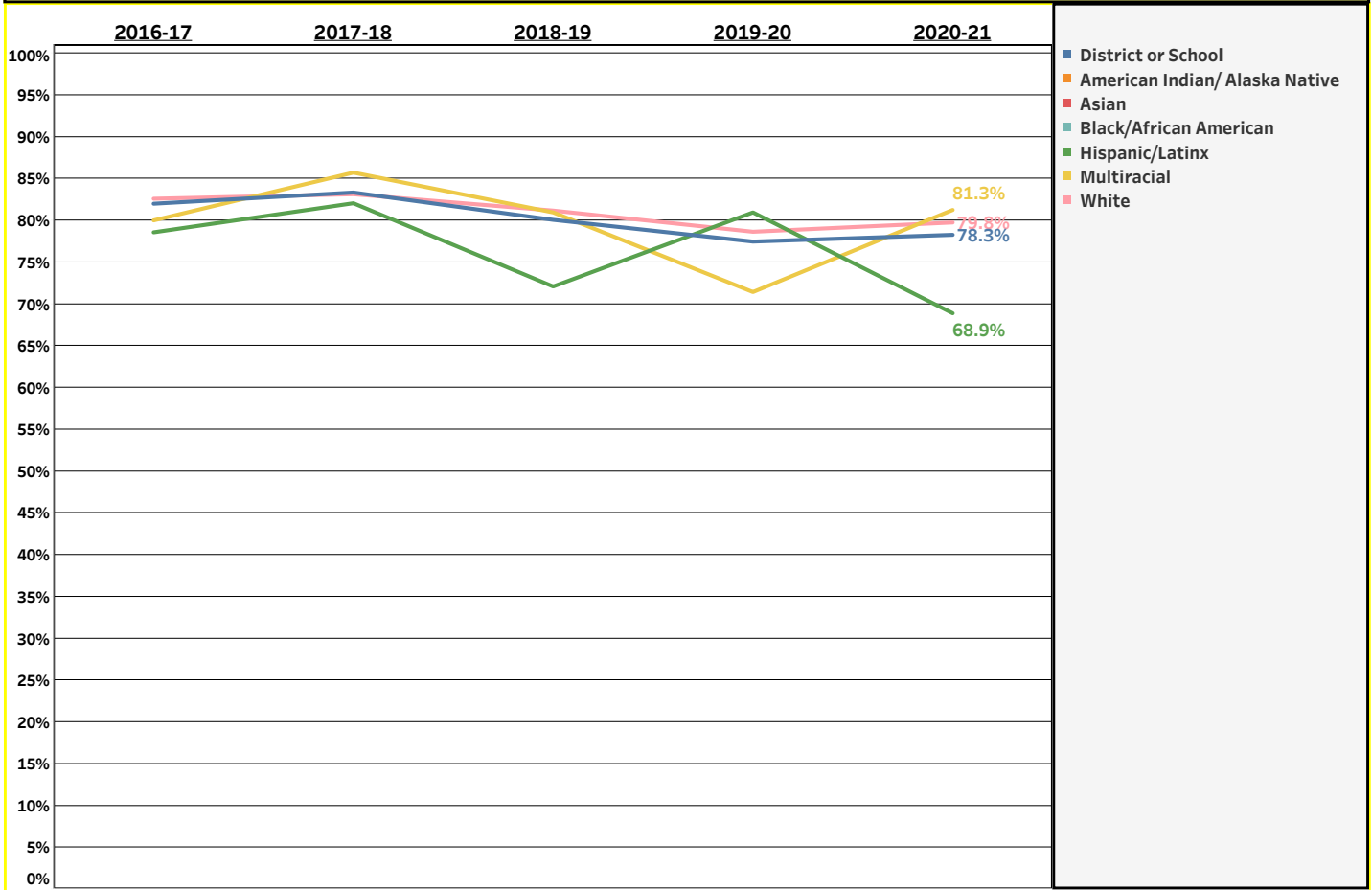
Four Year Graduation Rate by GENDER



		2016-17	2017-18	2018-19	2019-20	2020-21	Average	Trend
Female	Students Meeting Metric	120	132	123	107	125		
	All Students in Cohort	143	145	146	130	148		
	Rate	83.9%	91.0%	84.2%	82.3%	84.5%	85.3%	-0.8%
Male	Students Meeting Metric	135	128	126	113	119		
	All Students in Cohort	168	167	165	154	164		
	Rate	80.4%	76.6%	76.4%	73.4%	72.6%	75.9%	-1.9%
Non-binary	Students Meeting Metric							
	All Students in Cohort							
	Rate							

Central Point SD 6

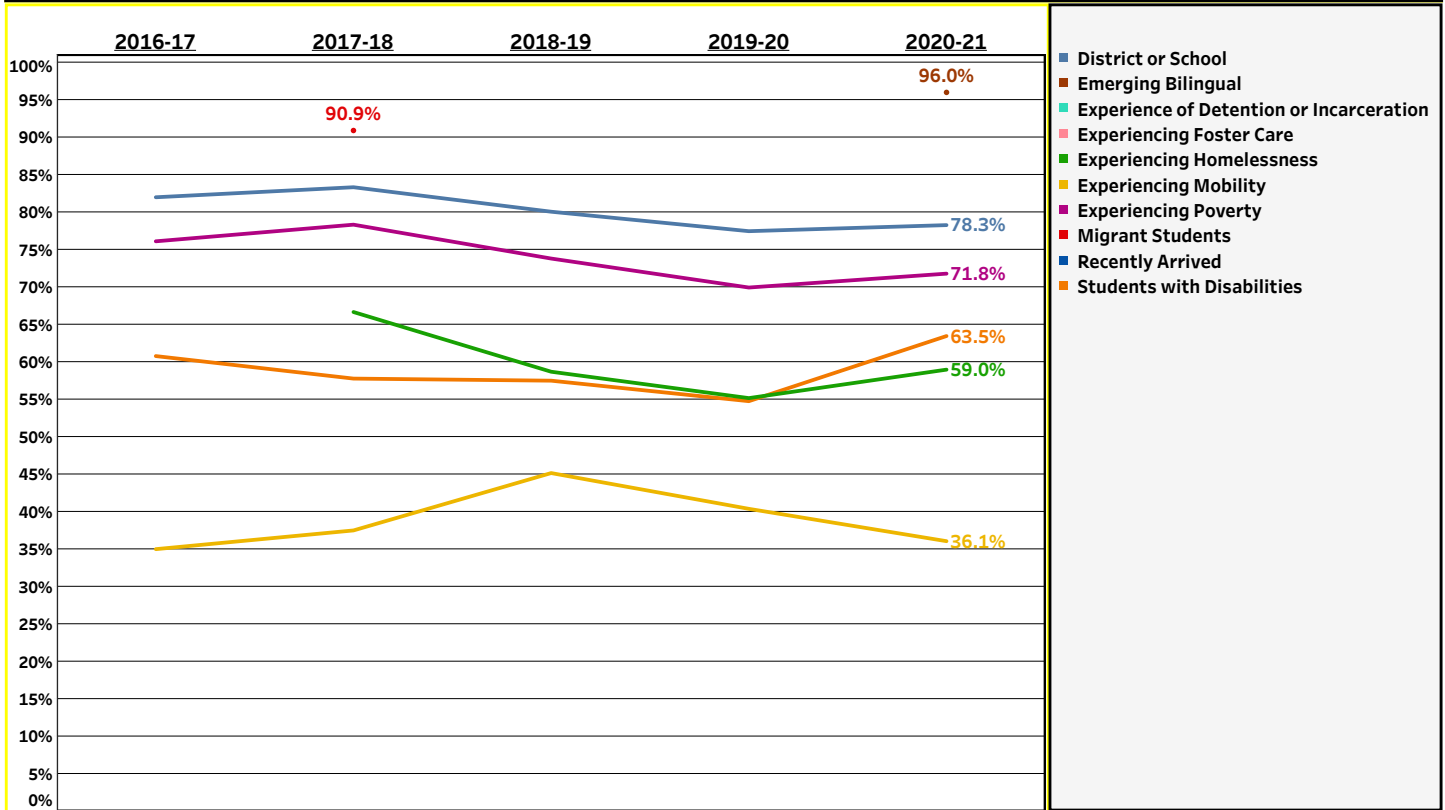
Four Year Graduation Rate by RACE/ETHNICITY



		2016-17	2017-18	2018-19	2019-20	2020-21	Average	Trend
District or School	Students Meeting Metric	255	260	249	220	245		
	All Students in Cohort	311	312	311	284	313		
	Rate	82.0%	83.3%	80.1%	77.5%	78.3%	80.3%	-1.3%
American Indian/ Alaska Native	Students Meeting Metric							
	All Students in Cohort							
	Rate							
Asian	Students Meeting Metric							
	All Students in Cohort							
	Rate							
Black/African American	Students Meeting Metric							
	All Students in Cohort							
	Rate							
Hispanic/Latinx	Students Meeting Metric	33	32	31	34	31		
	All Students in Cohort	42	39	43	42	45		
	Rate	78.6%	82.1%	72.1%	81.0%	68.9%	76.3%	-2.0%
Multiracial	Students Meeting Metric	12	18	17	20	13		
	All Students in Cohort	15	21	21	28	16		
	Rate	80.0%	85.7%	81.0%	71.4%	81.3%	79.2%	-1.2%
White	Students Meeting Metric	204	202	194	162	193		
	All Students in Cohort	247	243	239	206	242		
	Rate	82.6%	83.1%	81.2%	78.6%	79.8%	81.1%	-1.0%

Central Point SD 6

Four Year Graduation Rate by ADDITIONAL FOCAL GROUPS

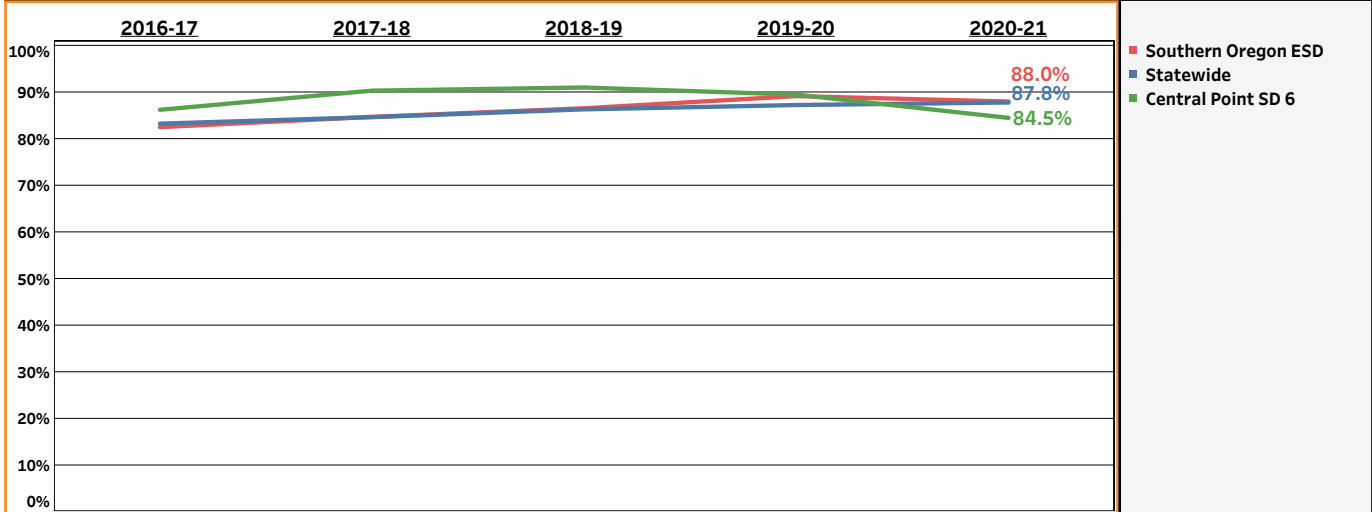


		2016-17	2017-18	2018-19	2019-20	2020-21	Average	Trend
District or School	Students Meeting Metric	255	260	249	220	245		
	All Students in Cohort	311	312	311	284	313		
	Rate	82.0%	83.3%	80.1%	77.5%	78.3%	80.3%	-1.3%
Emerging Bilingual	Students Meeting Metric							
	All Students in Cohort							
	Rate					96.0%		
Experience of Detention or Incarceration	Students Meeting Metric							
	All Students in Cohort							
	Rate							
Experiencing Foster Care	Students Meeting Metric							
	All Students in Cohort							
	Rate							
Experiencing Homelessness	Students Meeting Metric		28	27	16	23		
	All Students in Cohort		42	46	29	39		
	Rate		66.7%	58.7%	55.2%	59.0%		
Experiencing Mobility	Students Meeting Metric	14	18	28	21	22		
	All Students in Cohort	40	48	62	52	61		
	Rate	35.0%	37.5%	45.2%	40.4%	36.1%	39.2%	0.5%
Experiencing Poverty	Students Meeting Metric	137	141	124	114	140		
	All Students in Cohort	180	180	168	163	195		
	Rate	76.1%	78.3%	73.8%	69.9%	71.8%	74.0%	-1.7%
Migrant Students	Students Meeting Metric		10					
	All Students in Cohort		11					
	Rate		90.9%					
Recently Arrived	Students Meeting Metric							
	All Students in Cohort							
	Rate							
Students with Disabilities	Students Meeting Metric	31	26	23	23	33		
	All Students in Cohort	51	45	40	42	52		
	Rate	60.8%	57.8%	57.5%	54.8%	63.5%	59.1%	0.2%

SUPPRESSED

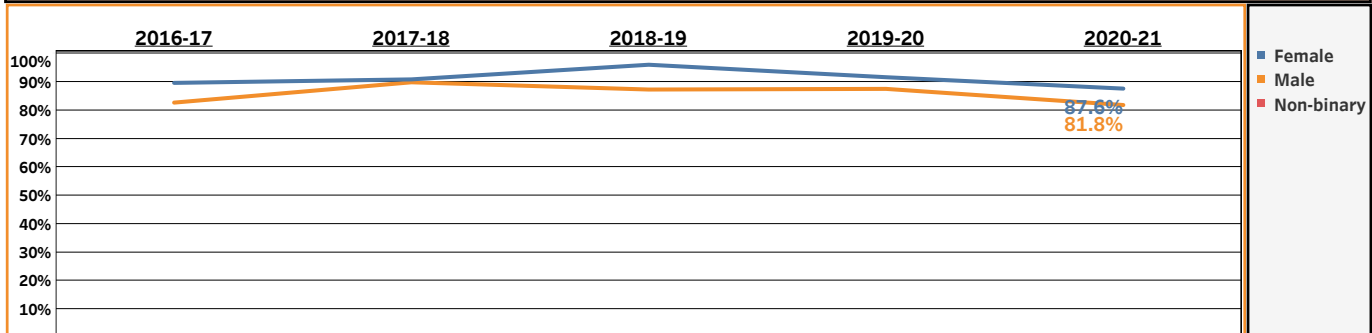
Central Point SD 6

5 Year Completion Rate by STATE, ESD, and DISTRICT or SCHOOL



		2016-17	2017-18	2018-19	2019-20	2020-21	Average	Trend
Central Point SD 6	Students Meeting Metric	262	279	282	271	239		
	All Students in Cohort	304	309	310	303	283		
	Rate	86.2%	90.3%	91.0%	89.4%	84.5%	88.3%	-0.4%
Southern Oregon ESD	Students Meeting Metric							
	All Students in Cohort							
	Rate	82.5%	84.7%	86.5%	89.1%	88.0%	86.1%	1.5%
Statewide	Students Meeting Metric							
	All Students in Cohort							
	Rate	83.2%	84.6%	86.3%	87.2%	87.8%	85.8%	1.2%

Five Year Completion Rate by GENDER

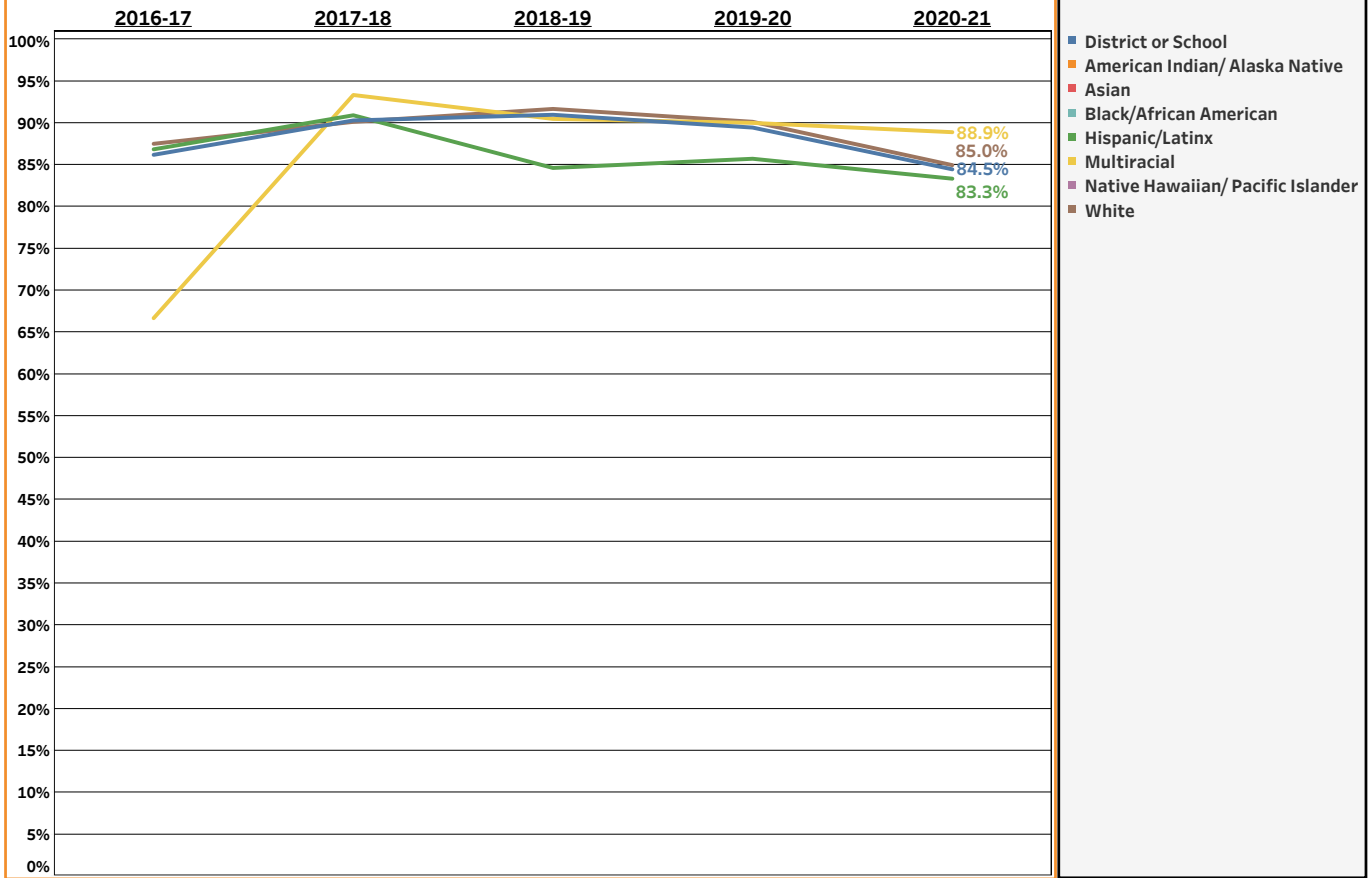


		2016-17	2017-18	2018-19	2019-20	2020-21	Average	Trend
Female	Students Meeting Metric	138	129		131	113		
	All Students in Cohort	154	142		143	129		
	Rate	89.6%	90.8%	96.0%	91.6%	87.6%	91.0%	-0.3%
Male	Students Meeting Metric	124	150	144	140	126		
	All Students in Cohort	150	167	165	160	154		
	Rate	82.7%	89.8%	87.3%	87.5%	81.8%	85.9%	-0.4%
Non-binary	Students Meeting Metric							
	All Students in Cohort							
	Rate							

SUPPRESSED

Central Point SD 6

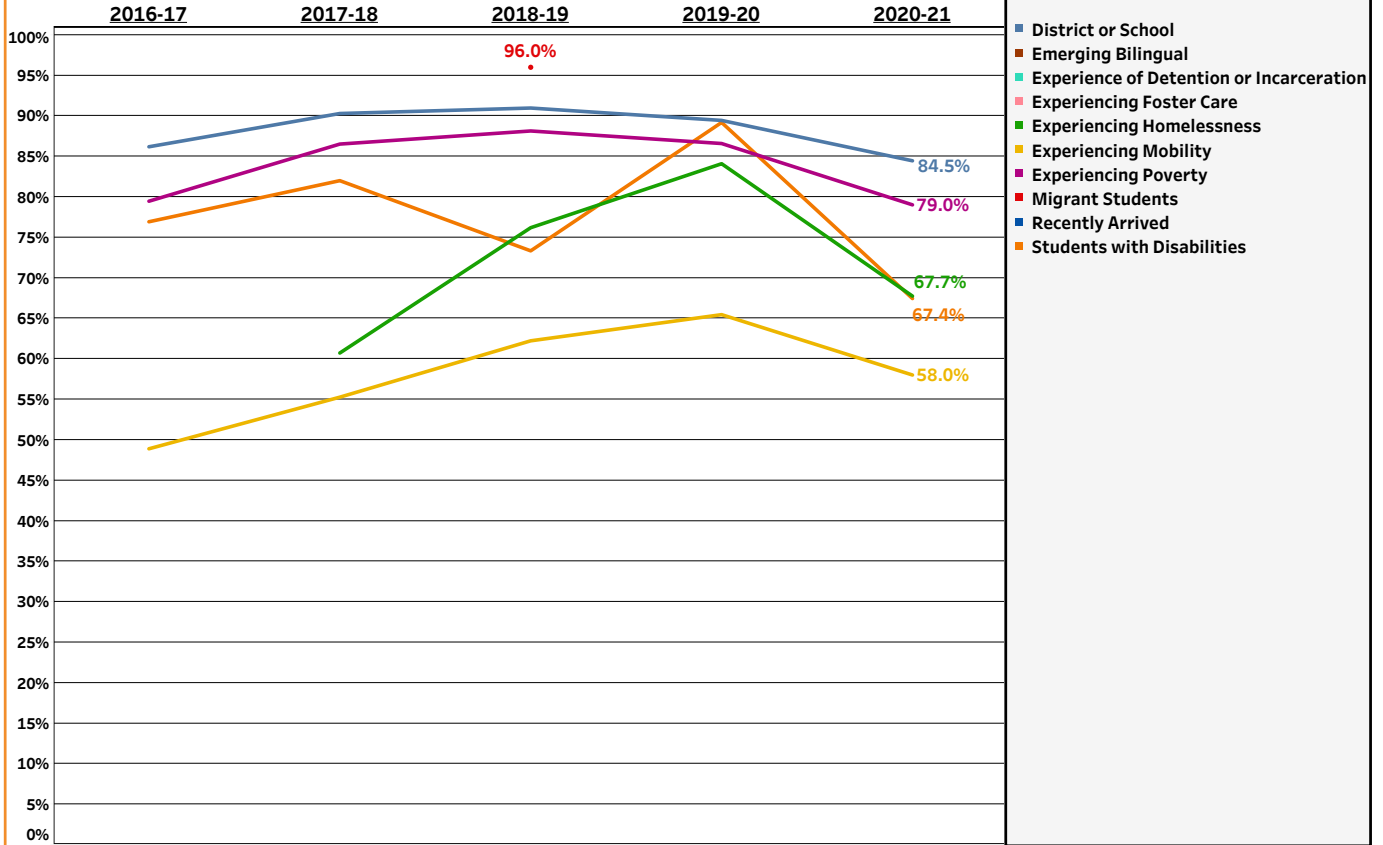
Five Year Completion Rate by RACE/ETHNICITY



		2016-17	2017-18	2018-19	2019-20	2020-21	Average	Trend
District or School	Students Meeting Metric	262	279	282	271	239		
	All Students in Cohort	304	309	310	303	283		
	Rate	86.2%	90.3%	91.0%	89.4%	84.5%	88.3%	-0.4%
American Indian/ Alaska Native	Students Meeting Metric							
	All Students in Cohort							
	Rate							
Asian	Students Meeting Metric							
	All Students in Cohort							
	Rate							
Black/African American	Students Meeting Metric							
	All Students in Cohort							
	Rate							
Hispanic/Latinx	Students Meeting Metric	33	40	33	36	35		
	All Students in Cohort	38	44	39	42	42		
	Rate	86.8%	90.9%	84.6%	85.7%	83.3%	86.3%	-1.2%
Multiracial	Students Meeting Metric	12	14	19	18	24		
	All Students in Cohort	18	15	21	20	27		
	Rate	66.7%	93.3%	90.5%	90.0%	88.9%	86.1%	4.1%
Native Hawaiian/ Pacific Islander	Students Meeting Metric							
	All Students in Cohort							
	Rate							
White	Students Meeting Metric	210	219	220	210	175		
	All Students in Cohort	240	243	240	233	206		
	Rate	87.5%	90.1%	91.7%	90.1%	85.0%	89.0%	-0.5%

Central Point SD 6

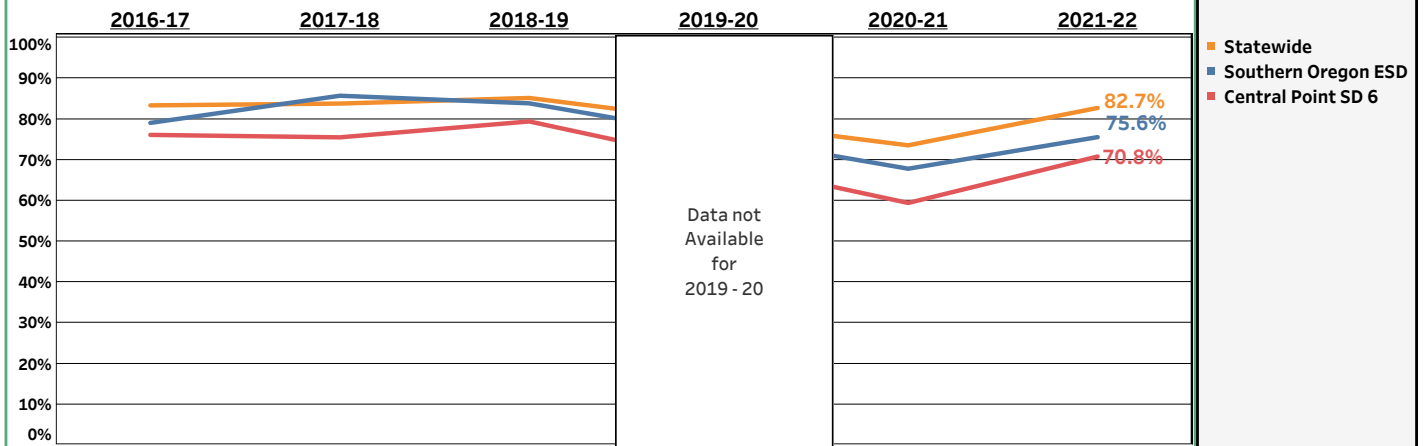
Five Year Completion Rate by ADDITIONAL FOCAL GROUPS



		2016-17	2017-18	2018-19	2019-20	2020-21	Average	Trend
District or School	Students Meeting Metric	262	279	282	271	239		
	All Students in Cohort Rate	304 86.2%	309 90.3%	310 91.0%	303 89.4%	283 84.5%	88.3%	-0.4%
Emerging Bilingual	Students Meeting Metric							
	All Students in Cohort Rate							
Experience of Detention or Incarceration	Students Meeting Metric							
	All Students in Cohort Rate							
Experiencing Foster Care	Students Meeting Metric							
	All Students in Cohort Rate							
Experiencing Homelessness	Students Meeting Metric		17	32	37	21		
	All Students in Cohort Rate		28 60.7%	42 76.2%	44 84.1%	31 67.7%		
Experiencing Mobility	Students Meeting Metric	22	21	28	36	29		
	All Students in Cohort Rate	45 48.9%	38 55.3%	45 62.2%	55 65.5%	50 58.0%	58.4%	2.8%
Experiencing Poverty	Students Meeting Metric	147	154	156	142	128		
	All Students in Cohort Rate	185 79.5%	178 86.5%	177 88.1%	164 86.6%	162 79.0%	83.9%	-0.1%
Migrant Students	Students Meeting Metric							
	All Students in Cohort Rate			96.0%				
Recently Arrived	Students Meeting Metric							
	All Students in Cohort Rate							
Students with Disabilities	Students Meeting Metric	30	41	33	33	29		
	All Students in Cohort Rate	39 76.9%	50 82.0%	45 73.3%	37 89.2%	43 67.4%	77.6%	-1.2%

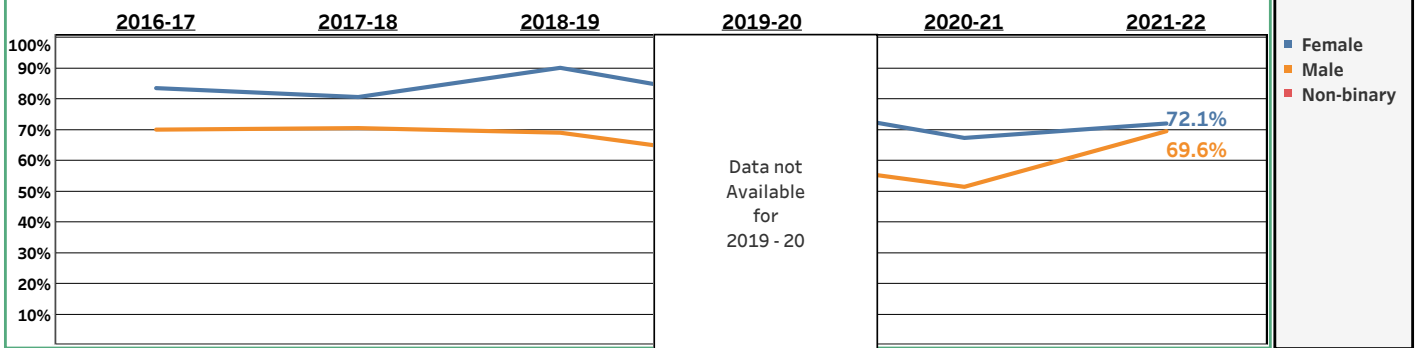
Central Point SD 6

9th Grade on Track for Graduation Rate by STATE, ESD, and DISTRICT or SCHOOL



		2016-17	2017-18	2018-19	2019-20	2020-21	2021-22	Average	Trend
Central Point SD 6	Students Meeting Metric	251	250	251		225	255		
	All Students in Cohort	330	331	316		379	360		
	Rate	76.1%	75.5%	79.4%		59.4%	70.8%	71.8%	-2.7%
Southern Oregon ESD	Students Meeting Metric								
	All Students in Cohort								
	Rate	79.0%	85.7%	83.8%		67.8%	75.6%	78.3%	-2.5%
Statewide	Students Meeting Metric								
	All Students in Cohort								
	Rate	83.3%	83.8%	85.2%		73.5%	82.7%	81.6%	-1.1%

9th Grade on Track for Graduation Rate by GENDER

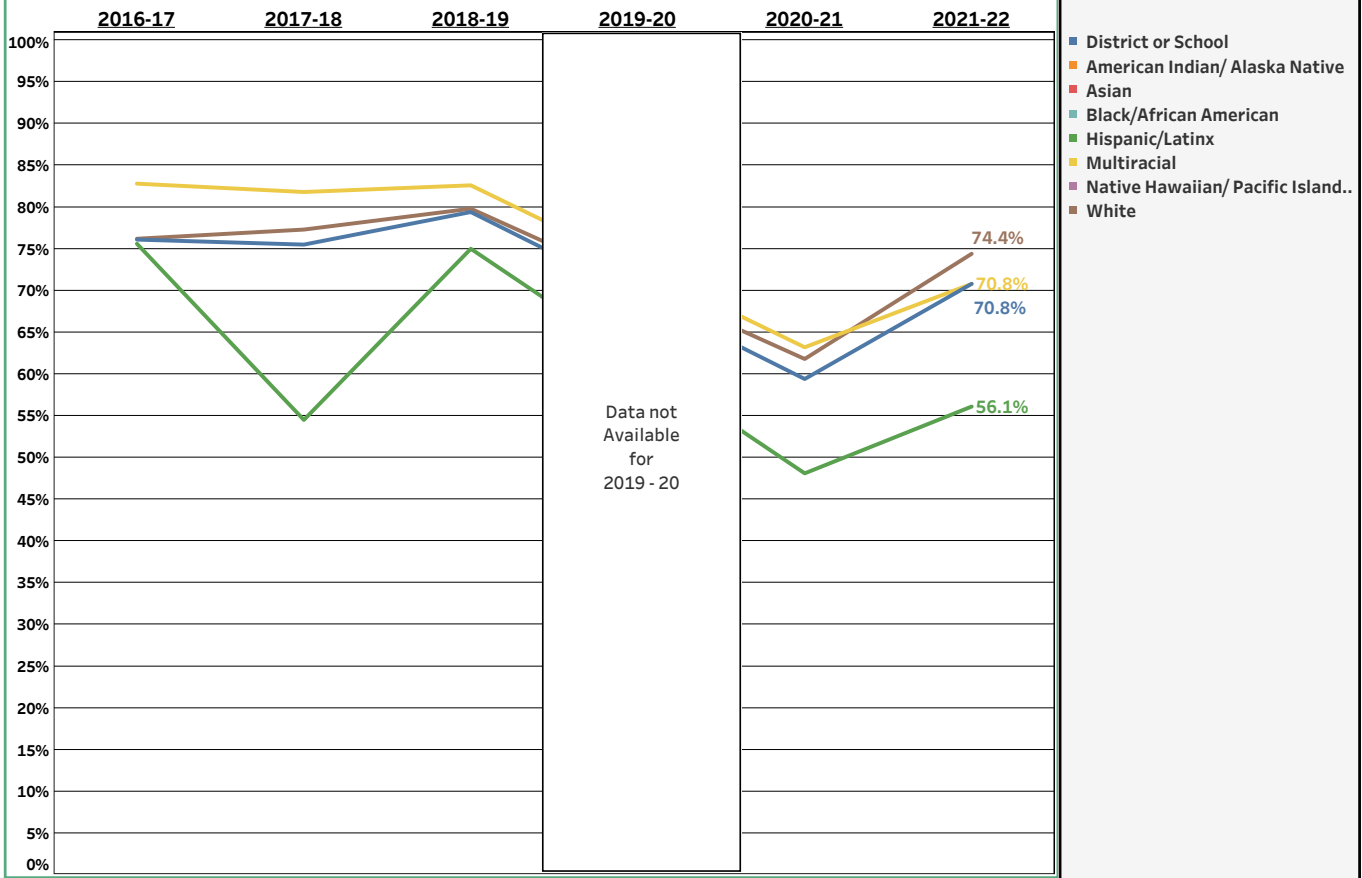


		2016-17	2017-18	2018-19	2019-20	2020-21	2021-22	Average	Trend
Female	Students Meeting Metric	122	130	138		124	129		
	All Students in Cohort	146	161	153		184	179		
	Rate	83.6%	80.7%	90.2%		67.4%	72.1%	78.1%	-3.6%
Male	Students Meeting Metric	129	120	112		100	126		
	All Students in Cohort	184	170	162		194	181		
	Rate	70.1%	70.6%	69.1%		51.5%	69.6%	65.9%	-2.0%
Non-binary	Students Meeting Metric								
	All Students in Cohort								
	Rate								

SUPPRESSED

Central Point SD 6

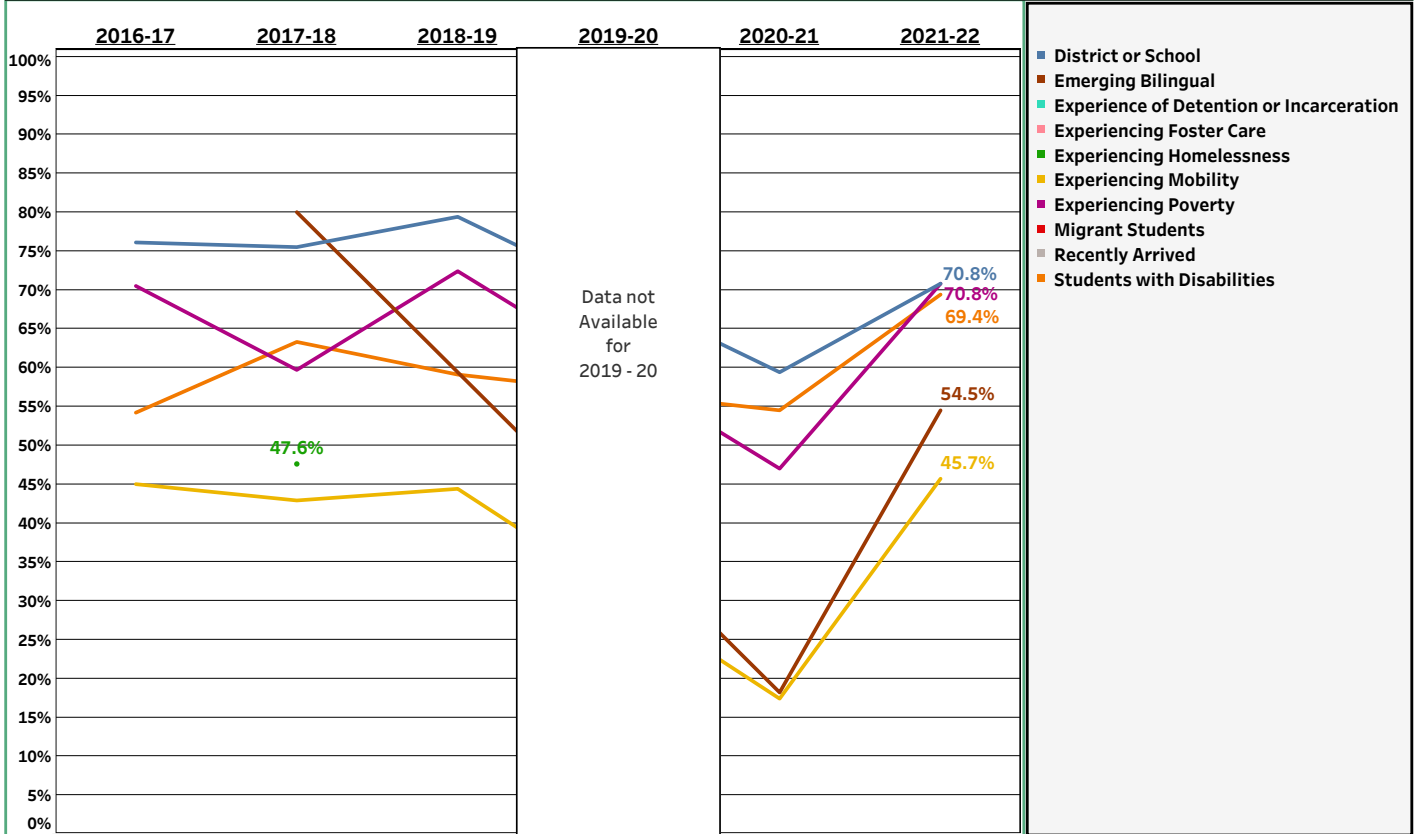
9th Grade on Track for Graduation Rate by RACE/ETHNICITY



		2016-17	2017-18	2018-19	2019-20	2020-21	2021-22	Average	Trend
District or School	Students Meeting Metric	251	250	251		225	255		
	All Students in Cohort	330	331	316		379	360		
	Rate	76.1%	75.5%	79.4%		59.4%	70.8%	71.8%	-2.7%
American Indian/ Alaska Native	Students Meeting Metric								
	All Students in Cohort								
	Rate								
Asian	Students Meeting Metric								
	All Students in Cohort								
	Rate								
Black/African American	Students Meeting Metric								
	All Students in Cohort								
	Rate								
Hispanic/Latinx	Students Meeting Metric	31	18	39		37	32		
	All Students in Cohort	41	33	52		77	57		
	Rate	75.6%	54.5%	75.0%		48.1%	56.1%	60.4%	-4.5%
Multiracial	Students Meeting Metric	24	18	19		12	17		
	All Students in Cohort	29	22	23		19	24		
	Rate	82.8%	81.8%	82.6%		63.2%	70.8%	76.9%	-4.3%
Native Hawaiian/ Pacific Islander	Students Meeting Metric								
	All Students in Cohort								
	Rate								
White	Students Meeting Metric	192	208	190		170	201		
	All Students in Cohort	252	269	238		275	270		
	Rate	76.2%	77.3%	79.8%		61.8%	74.4%	73.7%	-1.9%

Central Point SD 6

9th Grade on Track for Graduation Rate by ADDITIONAL FOCAL GROUPS

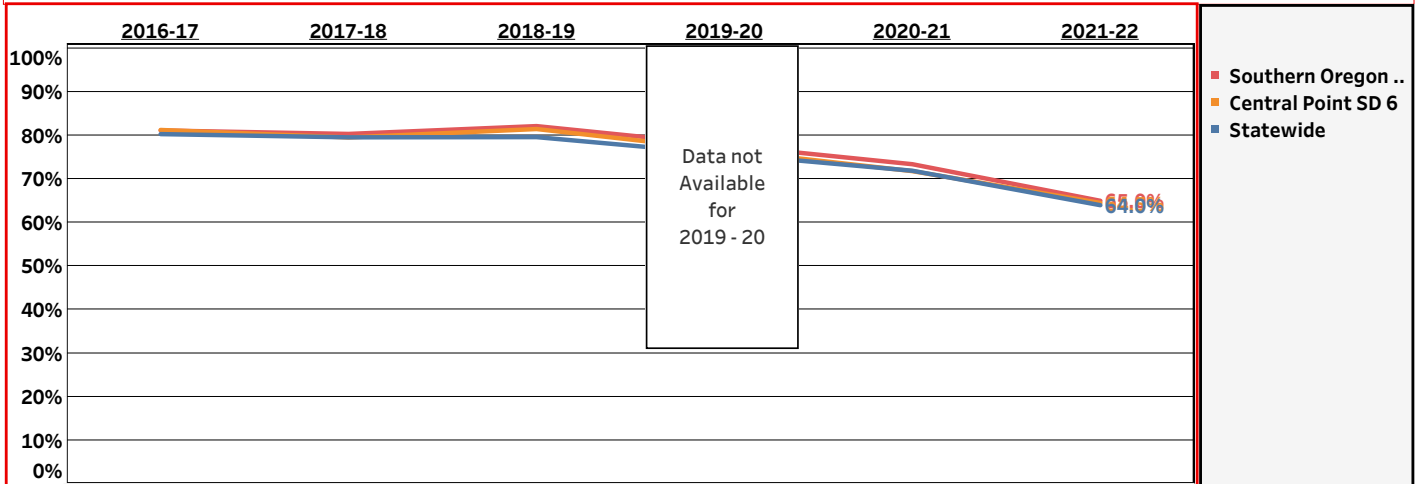


		2016-17	2017-18	2018-19	2019-20	2020-21	2021-22	Average	Trend
District or School	Students Meeting Metric	251	250	251		225	255		
	All Students in Cohort	330	331	316		379	360		
	Rate	76.1%	75.5%	79.4%		59.4%	70.8%	71.8%	-2.7%
Emerging Bilingual	Students Meeting Metric		8			2	6		
	All Students in Cohort		10			11	11		
	Rate		80.0%			18.2%	54.5%		
Experience of Detention or Incarceration	Students Meeting Metric								
	All Students in Cohort								
	Rate								
Experiencing Foster Care	Students Meeting Metric								
	All Students in Cohort								
	Rate								
Experiencing Homelessness	Students Meeting Metric		10						
	All Students in Cohort		21						
	Rate		47.6%						
Experiencing Mobility	Students Meeting Metric	9	9	8		4	16		
	All Students in Cohort	20	21	18		23	35		
	Rate	45.0%	42.9%	44.4%		17.4%	45.7%	39.3%	-2.4%
Experiencing Poverty	Students Meeting Metric	122	86	105		95	255		
	All Students in Cohort	173	144	145		202	360		
	Rate	70.5%	59.7%	72.4%		47.0%	70.8%	64.7%	-1.2%
Migrant Students	Students Meeting Metric								
	All Students in Cohort								
	Rate								
Recently Arrived	Students Meeting Metric								
	All Students in Cohort								
	Rate								
Students with Disabilities	Students Meeting Metric	32	31	26		30	25		
	All Students in Cohort	59	49	44		55	36		
	Rate	54.2%	63.3%	59.1%		54.5%	69.4%	59.3%	2.2%

SUPPRESSED

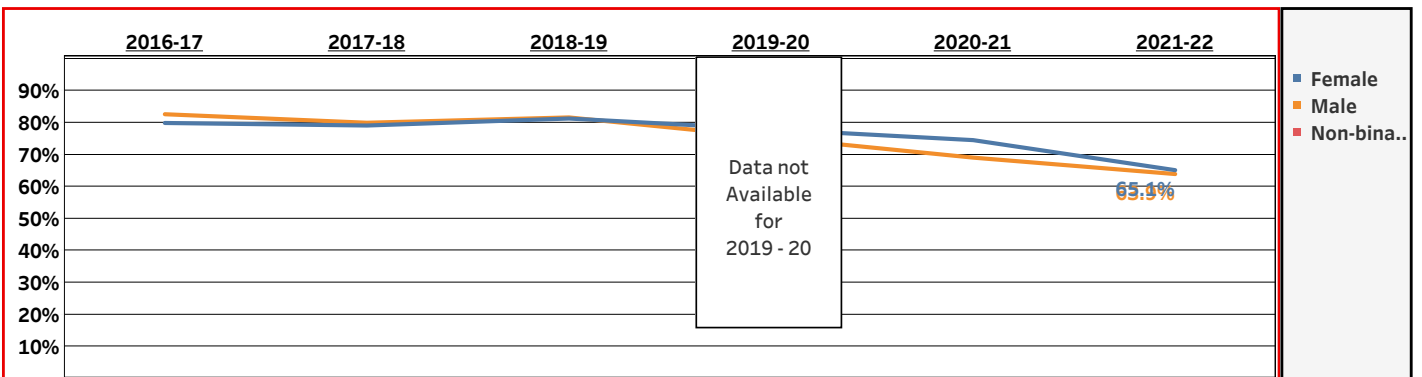
Central Point SD 6

Regular Attenders (Not Chronically Absent) Rate by STATE, ESD, and DISTRICT or SCHOOL



		2016-17	2017-18	2018-19	2019-20	2020-21	2021-22	Average	Trend
Central Point SD 6	Students Meeting Metric	3,608	3,627	3,751		3,262	2,898		
	All Students in Cohort	4,442	4,562	4,606		4,545	4,495		
	Rate	81.2%	79.5%	81.4%		71.8%	64.5%	75.7%	-4.1%
Southern Oregon ESD	Students Meeting Metric								
	All Students in Cohort								
	Rate	81.1%	80.3%	82.1%		73.4%	65.0%	76.5%	-3.9%
Statewide	Students Meeting Metric								
	All Students in Cohort								
	Rate	80.3%	79.5%	79.6%		71.9%	64.0%	75.2%	-4.0%

Regular Attenders (Not Chronically Absent) Rate by GENDER

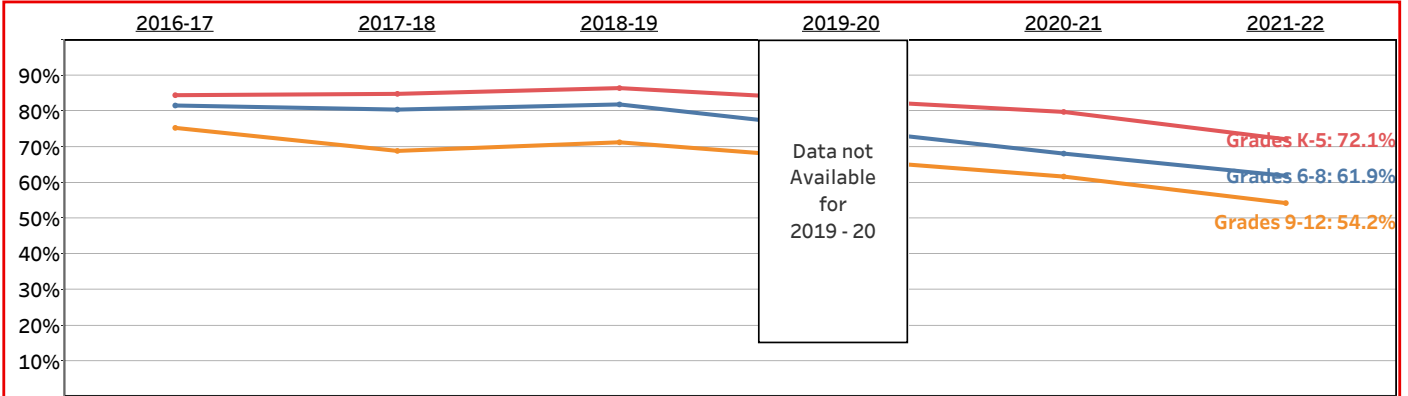


		2016-17	2017-18	2018-19	2019-20	2020-21	2021-22	Average	Trend
Female	Students Meeting Metric	1,785	1,806						
	All Students in Cohort	2,235	2,284						
	Rate	79.9%	79.1%	81.3%		74.5%	65.1%	76.0%	-3.4%
Male	Students Meeting Metric	1,823	1,821						
	All Students in Cohort	2,207	2,278						
	Rate	82.6%	79.9%	81.6%		69.0%	63.9%	75.5%	-4.8%
Non-Binary	Students Meeting Metric								
	All Students in Cohort								
	Rate								

SUPPRESSED

Central Point SD 6

Regular Attenders (Not Chronically Absent) Rate by GRADE LEVELS

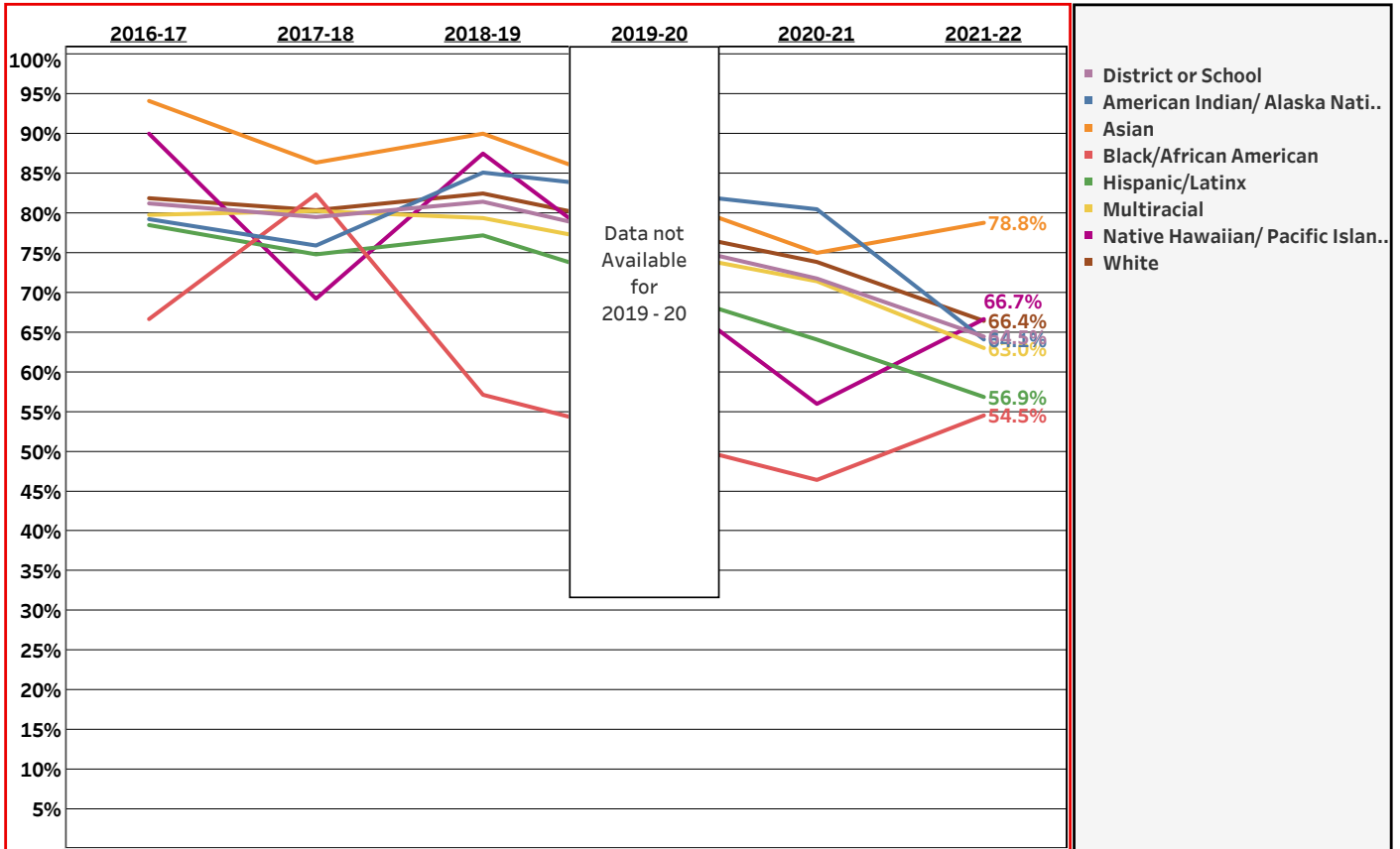


		2016-17	2017-18	2018-19	2019-20	2020-21	2021-22	Average	Trend
Grades K-5	Students Meeting Metric	1,866	1,959	2,005		1,701	1,511		
	All Students in Cohort	2,209	2,309	2,319		2,132	2,095		
	Rate	84.5%	84.8%	86.5%		79.8%	72.1%	81.7%	-3.0%
Grades 6-8	Students Meeting Metric	784	810	895		771	690		
	All Students in Cohort	961	1,007	1,093		1,132	1,115		
	Rate	81.6%	80.4%	81.9%		68.1%	61.9%	74.4%	-5.2%
Grades 9-12	Students Meeting Metric	958	858	851		790	697		
	All Students in Cohort	1,272	1,246	1,194		1,281	1,285		
	Rate	75.3%	68.9%	71.3%		61.7%	54.2%	66.2%	-4.9%
		2016-17	2017-18	2018-19	2019-20	2020-21	2021-22	Average	Trend
Kindergarten	Students Meeting Metric	286	292	298		221	211		
	All Students in Cohort	369	379	371		307	316		
	Rate	77.5%	77.0%	80.3%		72.0%	66.8%	75.1%	-2.7%
Grade 1	Students Meeting Metric	305	326	333		272	220		
	All Students in Cohort	368	389	398		340	319		
	Rate	82.9%	83.8%	83.7%		80.0%	69.0%	80.3%	-3.2%
Grade 2	Students Meeting Metric	319	344	341		297	250		
	All Students in Cohort	371	390	391		364	338		
	Rate	86.0%	88.2%	87.2%		81.6%	74.0%	83.7%	-3.1%
Grade 3	Students Meeting Metric	326	325	357		290	283		
	All Students in Cohort	368	376	394		367	370		
	Rate	88.6%	86.4%	90.6%		79.0%	76.5%	84.3%	-3.2%
Grade 4	Students Meeting Metric	331	336	336		317	269		
	All Students in Cohort	375	383	380		386	374		
	Rate	88.3%	87.7%	88.4%		82.1%	71.9%	83.7%	-3.8%
Grade 5	Students Meeting Metric	299	336	340		304	278		
	All Students in Cohort	358	392	385		368	378		
	Rate	83.5%	85.7%	88.3%		82.6%	73.5%	82.8%	-2.3%
Grade 6	Students Meeting Metric	271	287	346		266	255		
	All Students in Cohort	313	364	393		370	373		
	Rate	86.6%	78.8%	88.0%		71.9%	68.4%	78.6%	-4.3%
Grade 7	Students Meeting Metric	258	269	294		257	214		
	All Students in Cohort	326	320	375		386	376		
	Rate	79.1%	84.1%	78.4%		66.6%	56.9%	72.5%	-6.2%
Grade 8	Students Meeting Metric	255	254	255		248	221		
	All Students in Cohort	322	323	325		376	366		
	Rate	79.2%	78.6%	78.5%		66.0%	60.4%	72.0%	-5.0%
Grade 9	Students Meeting Metric	269	250	261		241	219		
	All Students in Cohort	324	330	319		377	359		
	Rate	83.0%	75.8%	81.8%		63.9%	61.0%	72.6%	-5.6%
Grade 10	Students Meeting Metric	264	232	222		220	190		
	All Students in Cohort	331	316	301		329	360		
	Rate	79.8%	73.4%	73.8%		66.9%	52.8%	68.9%	-6.1%
Grade 11	Students Meeting Metric	225	221	204		168	163		
	All Students in Cohort	315	298	280		295	294		
	Rate	71.4%	74.2%	72.9%		56.9%	55.4%	66.2%	-4.9%
Grade 12	Students Meeting Metric	200	155	164		161	125		
	All Students in Cohort	302	302	294		280	272		
	Rate	66.2%	51.3%	55.8%		57.5%	46.0%	55.5%	-3.4%

SUPPRESSED

Central Point SD 6

Regular Attenders (Not Chronically Absent) Rate by RACE/ETHNICITY

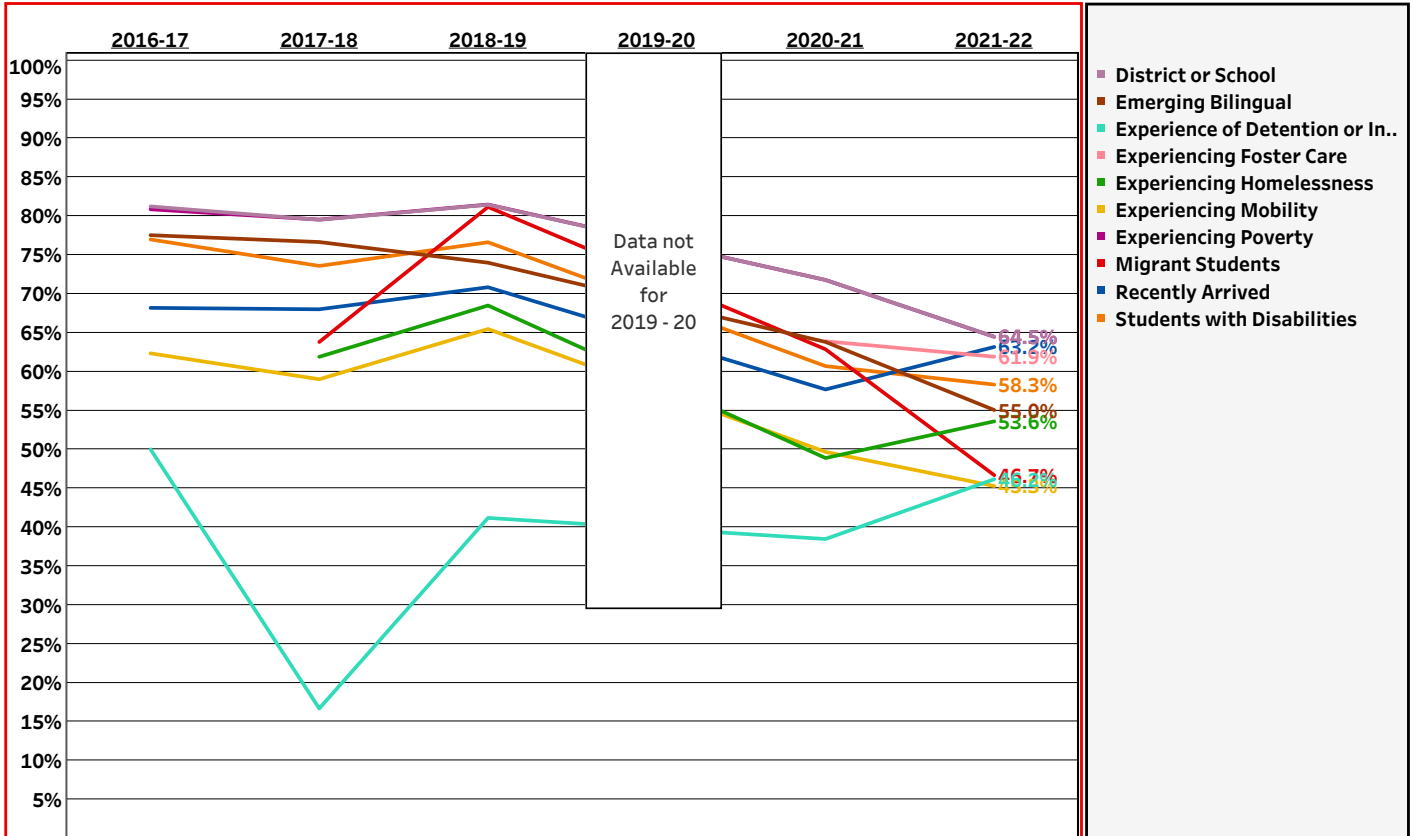


		2016-17	2017-18	2018-19	2019-20	2020-21	2021-22	Average	Trend
District or School	Students Meeting Metric	3,608	3,627	3,751		3,262	2,898		
	All Students in Cohort	4,442	4,562	4,606		4,545	4,495		
	Rate	81.2%	79.5%	81.4%		71.8%	64.5%	75.7%	-4.1%
American Indian/Alaska Native	Students Meeting Metric	42	41	40		33	25		
	All Students in Cohort	53	54	47		41	39		
	Rate	79.2%	75.9%	85.1%		80.5%	64.1%	77.4%	-2.6%
Asian	Students Meeting Metric	16	19	27		21	26		
	All Students in Cohort	17	22	30		28	33		
	Rate	94.1%	86.4%	90.0%		75.0%	78.8%	83.8%	-4.2%
Black/African American	Students Meeting Metric	10	14	12		13	12		
	All Students in Cohort	15	17	21		28	22		
	Rate	66.7%	82.4%	57.1%		46.4%	54.5%	59.2%	-6.0%
Hispanic/Latinx	Students Meeting Metric	522	499	552		514	472		
	All Students in Cohort	665	667	715		802	830		
	Rate	78.5%	74.8%	77.2%		64.1%	56.9%	69.6%	-5.4%
Multiracial	Students Meeting Metric	221	232	231		215	179		
	All Students in Cohort	277	289	291		301	284		
	Rate	79.8%	80.3%	79.4%		71.4%	63.0%	74.8%	-4.2%
Native Hawaiian/Pacific Islander	Students Meeting Metric	9	9	14		14	16		
	All Students in Cohort	10	13	16		25	24		
	Rate	90.0%	69.2%	87.5%		56.0%	66.7%	70.5%	-6.0%
White	Students Meeting Metric	2,788	2,813	2,875		2,452	2,168		
	All Students in Cohort	3,405	3,500	3,486		3,320	3,263		
	Rate	81.9%	80.4%	82.5%		73.9%	66.4%	77.2%	-3.7%

SUPPRESSED

Central Point SD 6

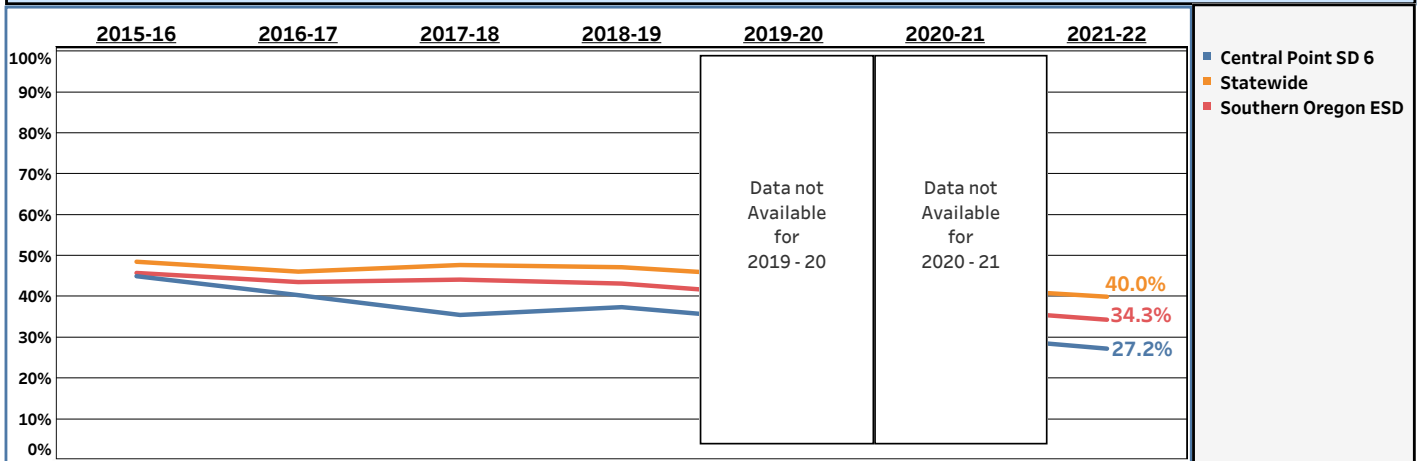
Regular Attenders (Not Chronically Absent) Rate by ADDITIONAL FOCAL GROUPS



		2016-17	2017-18	2018-19	2019-20	2020-21	2021-22	Average	Trend
District or School	Students Meeting Metric	3,608	3,627	3,751		3,262	2,898		
	All Students in Cohort Rate	4,442	4,562	4,606		4,545	4,495	75.7%	-4.1%
Emerging Bilingual	Students Meeting Metric	138	128	128		141	120		
	All Students in Cohort Rate	178	167	173		221	218	68.4%	-5.8%
Experience of Detention or Incarceration	Students Meeting Metric	8	2	7		5	6		
	All Students in Cohort Rate	16	12	17		13	13	39.4%	1.4%
Experiencing Foster Care	Students Meeting Metric					23	26		
	All Students in Cohort Rate					36	42		
Experiencing Homelessness	Students Meeting Metric		177	163		87	82		
	All Students in Cohort Rate		286	238		178	153		
Experiencing Mobility	Students Meeting Metric	187	190	199		147	163		
	All Students in Cohort Rate	300	322	304		296	360	56.0%	-4.3%
Experiencing Poverty	Students Meeting Metric	2,682	2,744	2,818		3,262	2,897		
	All Students in Cohort Rate	3,317	3,450	3,459		4,545	4,494	74.8%	-4.1%
Migrant Students	Students Meeting Metric		37	56		44	28		
	All Students in Cohort Rate		58	69		70	60		
Recently Arrived	Students Meeting Metric	15	17	17		15	12		
	All Students in Cohort Rate	22	25	24		26	19		
Students with Disabilities	Students Meeting Metric	525	543	580		420	389	65.5%	-2.0%
	All Students in Cohort Rate	682	738	757		692	667	69.5%	-5.0%

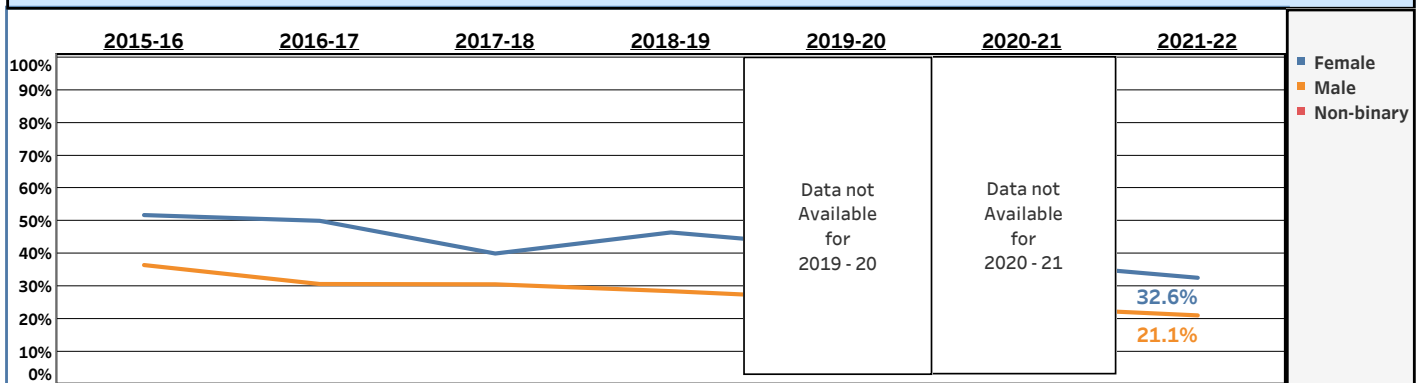
Central Point SD 6

3rd Grade English Language Arts Proficiency Rate by STATE, ESD, and DISTRICT or SCHOOL



		2015-16	2016-17	2017-18	2018-19	2019-20	2020-21	2021-22	Average	Trend
Central Point SD 6	Students Meeting Metric	161	142	126	138			94		
	All Students in Cohort	358	352	355	369			345		
	Rate	45.0%	40.3%	35.5%	37.4%			27.2%	37.2%	-3.8%
Southern Oregon ESD	Students Meeting Metric									
	All Students in Cohort									
	Rate	45.8%	43.5%	44.1%	43.2%			34.3%	42.4%	-2.3%
Statewide	Students Meeting Metric									
	All Students in Cohort									
	Rate	48.5%	46.1%	47.7%	47.2%			40.0%	46.0%	-1.6%

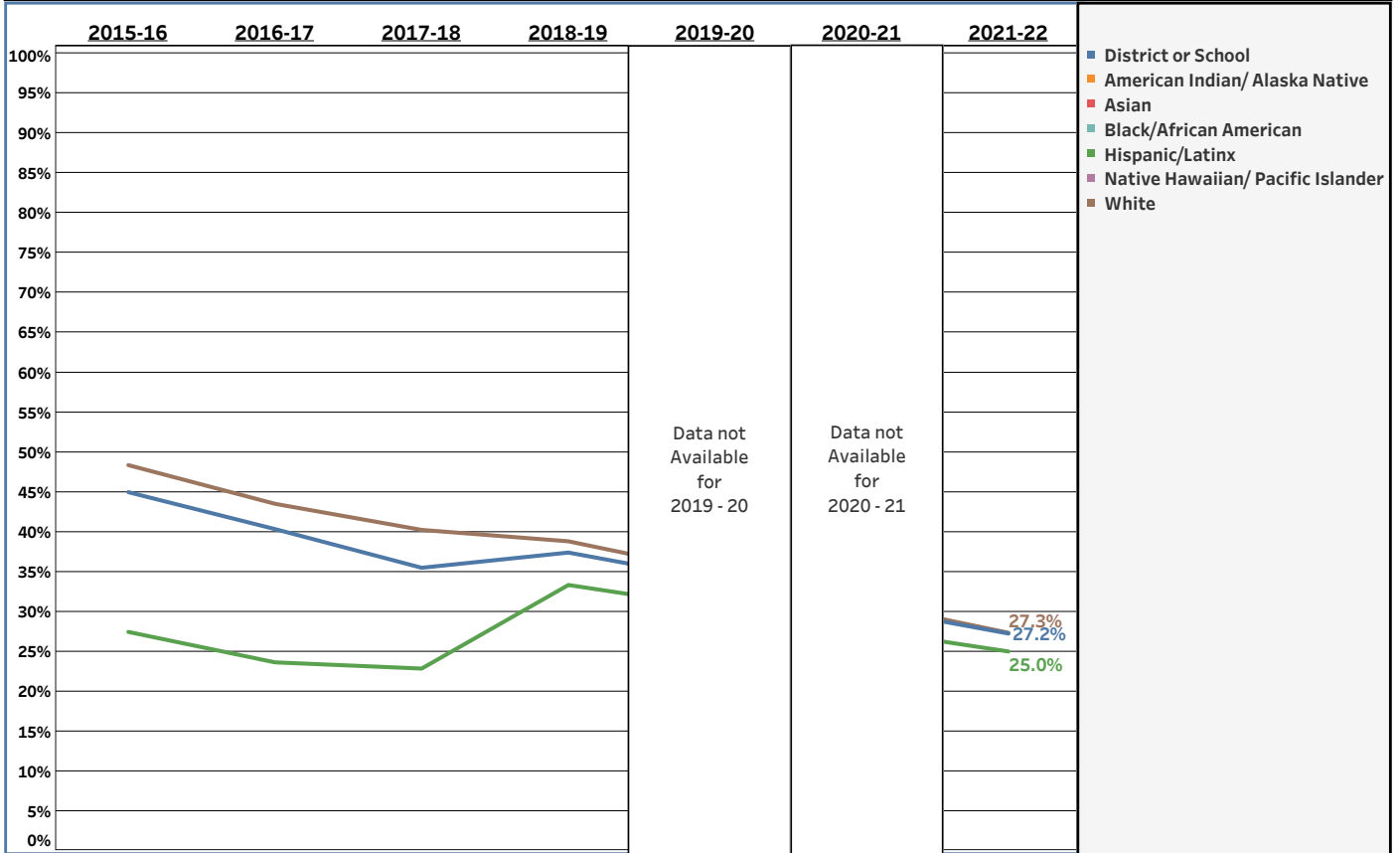
3rd Grade English Language Arts Proficiency Rate by GENDER



		2015-16	2016-17	2017-18	2018-19	2019-20	2020-21	2021-22	Average	Trend
Female	Students Meeting Metric	103	88	74	85					
	All Students in Cohort	199	176	185	183					
	Rate	51.8%	50.0%	40.0%	46.4%			32.6%	44.3%	-4.2%
Male	Students Meeting Metric	58	54	52	53					
	All Students in Cohort	159	176	170	186					
	Rate	36.5%	30.7%	30.6%	28.5%			21.1%	29.4%	-3.3%
Non-Binary	Students Meeting Metric									
	All Students in Cohort									
	Rate									

Central Point SD 6

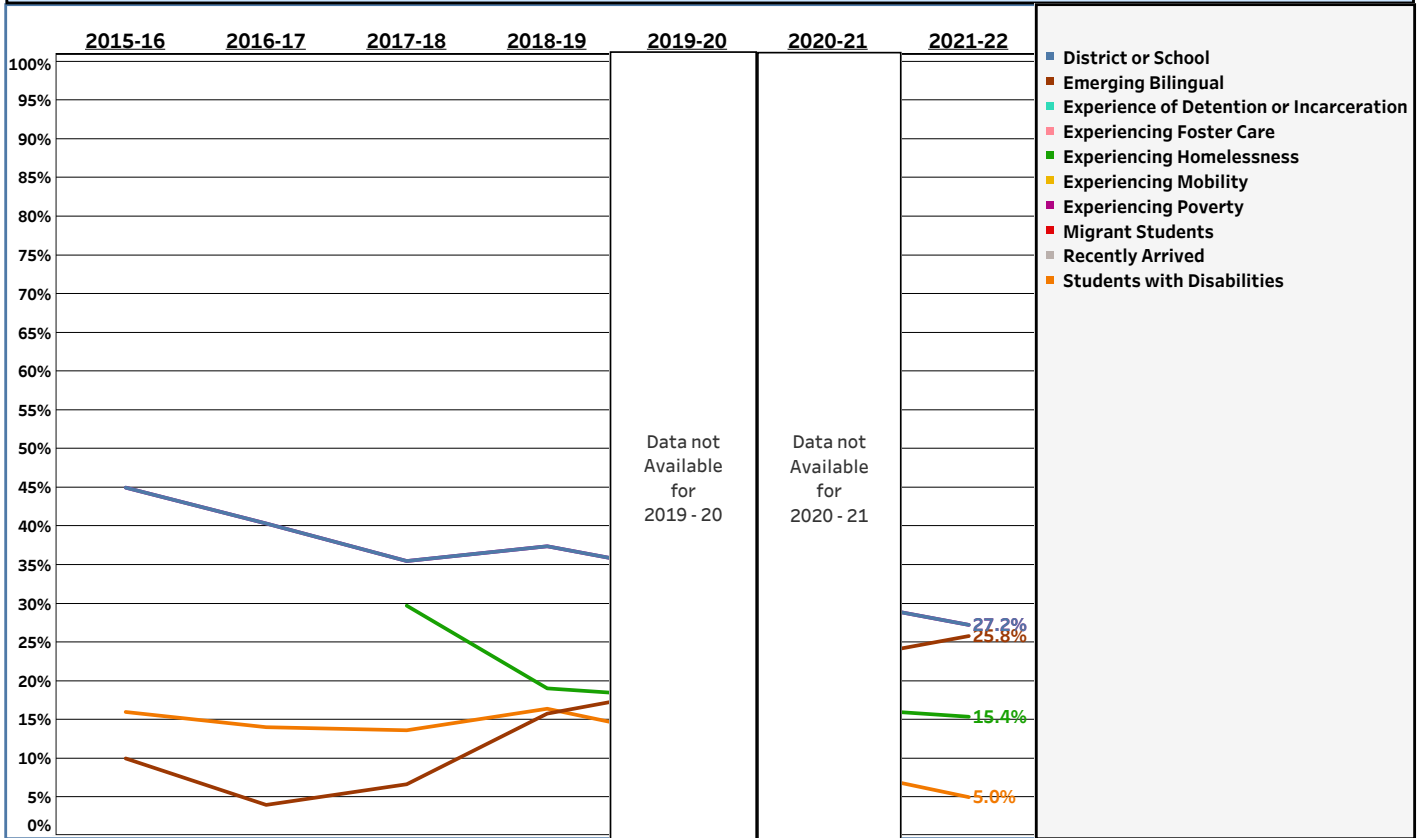
3rd Grade English Language Arts Proficiency Rate by RACE/ETHNICITY



		2015-16	2016-17	2017-18	2018-19	2019-20	2020-21	2021-22	Average	Trend
District or School	Students Meeting Metric	161	142	126	138			94		
	All Students in Cohort	358	352	355	369			345		
	Rate	45.0%	40.3%	35.5%	37.4%			27.2%	37.2%	-3.8%
American Indian/ Alaska Native	Students Meeting Metric									
	All Students in Cohort									
	Rate									
Asian	Students Meeting Metric									
	All Students in Cohort									
	Rate									
Black/African American	Students Meeting Metric									
	All Students in Cohort									
	Rate									
Hispanic/Latinx	Students Meeting Metric	14	13	16	17			16		
	All Students in Cohort	51	55	70	51			64		
	Rate	27.5%	23.6%	22.9%	33.3%			25.0%	26.1%	0.5%
Native Hawaiian/ Pacific Islander	Students Meeting Metric									
	All Students in Cohort									
	Rate									
White	Students Meeting Metric	133	114	101	111			70		
	All Students in Cohort	275	262	251	286			256		
	Rate	48.4%	43.5%	40.2%	38.8%			27.3%	39.8%	-4.7%

Central Point SD 6

3rd Grade English Language Arts Proficiency Rate by ADDITIONAL FOCAL GROUPS



		2015-16	2016-17	2017-18	2018-19	2019-20	2020-21	2021-22	Average	Trend
District or School	Students Meeting Metric	161	142	126	138			94		
	All Students in Cohort	358	352	355	369			345		
	Rate	45.0%	40.3%	35.5%	37.4%			27.2%	37.2%	-3.8%
Emerging Bilingual	Students Meeting Metric	2		2	3			8		
	All Students in Cohort	20		30	19			31		
	Rate	10.0%	4.0%	6.7%	15.8%			25.8%	12.5%	4.7%
Experience of Detention or Incarceration	Students Meeting Metric									
	All Students in Cohort									
	Rate									
Experiencing Foster Care	Students Meeting Metric									
	All Students in Cohort									
	Rate									
Experiencing Homelessness	Students Meeting Metric			11	4			2		
	All Students in Cohort			37	21			13		
	Rate			29.7%	19.0%			15.4%		
Experiencing Mobility	Students Meeting Metric									
	All Students in Cohort									
	Rate									
Experiencing Poverty	Students Meeting Metric	161	142	126	138			94		
	All Students in Cohort	358	352	355	369			345		
	Rate	45.0%	40.3%	35.5%	37.4%			27.2%	37.2%	-3.8%
Migrant Students	Students Meeting Metric									
	All Students in Cohort									
	Rate									
Recently Arrived	Students Meeting Metric									
	All Students in Cohort									
	Rate									
Students with Disabilities	Students Meeting Metric	8	8	9	11			2		
	All Students in Cohort	50	57	66	67			40		
	Rate	16.0%	14.0%	13.6%	16.4%			5.0%	13.6%	-2.0%

Data Sources, Inclusion, and Suppression

METRICS

Four Year Graduation Rate

The four year graduation rate is the percentage of students in a cohort (students who entered 9th grade in the same school year), adjusted for transfers in and out of the district, who earn a standard (Oregon or Modified) high school diploma within four years of entering high school.

See more information in the [Cohort Graduation Rate Technical Manual](#).

Five Year Completer Rate

The five year completer rate is the percentage of students in a cohort, adjusted for transfers in and out of the district, who earn a standard (Oregon or Modified), extended, or adult high school diploma, or a GED within five years of entering high school.

See more information in the [Cohort Graduation Rate Technical Manual](#).

Ninth Grade On Track Rate

The ninth grade on track rate is the percentage of students who earn at least $\frac{1}{4}$ of the credits required for graduation by the end of their ninth grade year or during summer school immediately following their ninth grade year. Students are included in a district's rate calculation if they are enrolled in the district on the first school day in May and have been enrolled more than half (greater than 0.5 ADM) of the academic year within the same school district.

This rate was not reported for the 2019-20 school year due to the temporary suspension of the 3rd Period Cumulative ADM and Ninth Grade On-Track data collections.

See more information in the [9th Grade On Track Manual](#).

Regular Attendance Rate

The regular attendance rate is the percentage of students who attend more than 90% of their enrolled school days from the beginning of the year until the first school day in May. Students are included in a district's rate calculation if they are enrolled in the district on the first school day in May and have been enrolled for at least 75 days during the school year in that district.

This rate was not reported for the 2019-20 school year due to the temporary suspension of the 3rd Period Cumulative ADM data collection. Additionally, rates for the 2020-21 and 2021-22 school years are not directly comparable to rates for years prior to the 2019-20 school year due to technical changes in the way attendance and absenteeism were calculated in those years.

See more information in the [Regular Attenders Validation Guide](#).

Grade 3 English Language Arts (ELA) Assessment (OSAS) Proficiency Rate

The Grade 3 ELA OSAS met or exceeded standard (proficiency) rate is the percentage of third grade students who took the Oregon Statewide Assessment in English Language Arts and scored a '3' (met standard) or '4' (exceeded standard). Test results of English Learner students first enrolling in a U.S. school after August 15 of the reporting school year are not included.

This rate was not reported for the 2019-20 or 2020-21 school years due to a state waiver of required participation in the summative assessments.

See more information on the [English Language Arts Assessment webpage](#).

STUDENT POPULATIONS

Gender

The three reported gender categories are: Female, Male, and Non-binary. Schools and districts may have more options for identification but reporting to the Oregon Department of Education must fall within these three categories.

Race and Ethnicity

The seven reported race and ethnicity categories are: American Indian/ Alaska Native, Asian, Black/African American, Hispanic/Latino/Latina/Latinx, Multiracial, Native Hawaiian/ Pacific Islander, and White. Schools and districts may have more options for identification but reporting to the Oregon Department of Education must fall within these groupings to meet federal reporting requirements.

Students Experiencing Mobility

This population is defined as students who have first enrolled in K-12 after October 1st, left enrollment prior to May 1st, changed schools within a school year, or left a school and returned to the same school with more than a ten weekday gap in enrollment. Students are considered to be mobile if they have experienced one or more of these conditions.

This data comes from the Cumulative ADM data collection each year.

Students Experiencing Homelessness

This population is defined as students who do not have access to a fixed, regular, or adequate nighttime residence. This includes students whose nighttime residence is one of: shelter, unsheltered, hotel or motel, or doubled-up/shared housing. This population does not have data reported for the 2016-17 school year.

This data comes from the ESEA McKinney-Vento Homeless collection.

Students Experiencing Foster Care

This population is defined as students who are navigating the foster care system. The foster care system provides temporary or permanent living situations for students whose parents or family cannot safely provide for them and whose need for care has come to the attention of the child welfare agency staff. This population has data reported for the 2020-21 and 2021-22 school years only.

This data comes from the Department of Human Services Office of Child Welfare Programs.

Students Experiencing Poverty

This population is defined as students who are experiencing economic disadvantage using the USDA income eligibility guidelines charting free and reduced-price lunch. The eligibility for free and reduced-price lunch was expanded during the COVID pandemic and the number of students included increased dramatically over the past few years.

This data comes from the 3rd Period Cumulative ADM data collection's Economically Disadvantaged flag.

Students who are Recent Arrivers

This population is defined as students who were born outside of the United States or United States territories and have had less than three cumulative years of education in the United States.

This data comes from the ESEA Title III: Recent Arrivers collection.

Students with Disabilities

This population is defined as students who are experiencing disability, have an Individual Education Program (IEP), and are receiving supports or accommodations under the Individuals with Disabilities Education Act (IDEA).

This data comes from the Special Education flag of the Spring Membership extract from the 3rd period Cumulative ADM collection or the Special Education Child Count (SECC) collection, depending on the metric.

Students with Experience of Incarceration or Detention

This population is defined as students who are currently or have previously been incarcerated or detained within Oregon's Youth Corrections or Juvenile Detention Education Programs.

This data comes from the Annual Cumulative ADM data collections.

Students who are Emerging Bilingual

This population is defined as students who are developing skills in their first language as well as English, whose difficulties in speaking, reading, writing, or understanding the English language may be sufficient to deny the individual:

- the ability to meet the challenging State academic standards;
- the ability to successfully achieve in classrooms where the language of instruction is English; or
- the opportunity to participate fully in society.

This data comes from a matching of the ESEA Title III: English Learners spring collection and/or English Language Proficiency Assessment records. This student group is sometimes referred to as “English Learners”.

Students who are Migrant

This population is defined as students who have moved to Oregon or within Oregon within the last three years in order for themselves or their family to pursue work as migrant agricultural workers or fishers.

This data comes from the Oregon Migrant Student Information System (OMSIS) from the most recent previous year.

SUPPRESSION RULES

For the suppressed versions of the data sheets, student populations of fewer than 10 students do not have rates reported to protect student privacy. These will appear as blanks in the graphs and data tables. Also, to ensure student privacy and confidentiality, rates higher than 95% or lower than 5% will not be reported; instead these will appear as 96% or 4%, respectively, and the data tables will have student counts as blanks.