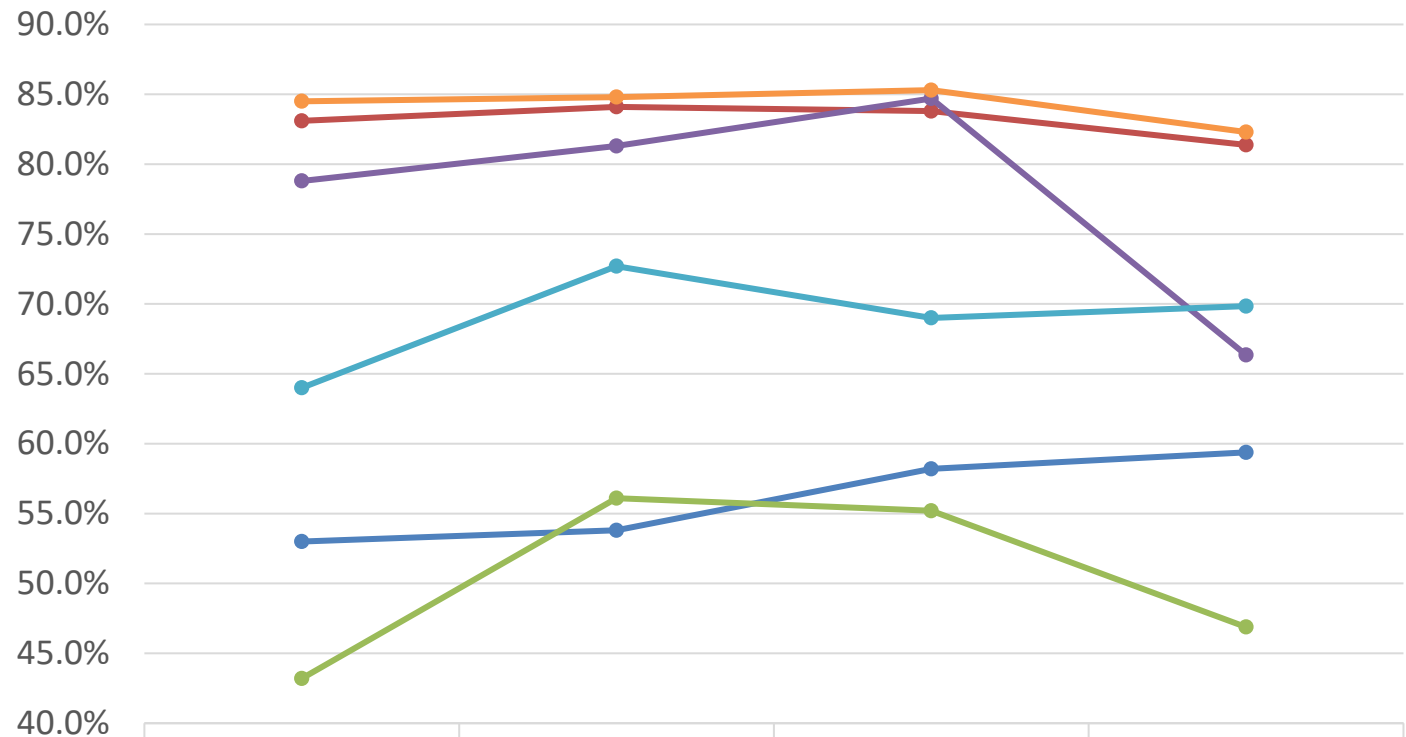




2019-20 PUSD Graduation and Dropout Rates by Student Groups

Table 1. Graduation Rate by student group over time



	2016-17 (N=1,220)	2017-18 (N=1,190)	2018-19 (N=1,251)	2019-20 (N=1,104)
English Learner	53.0%	53.8%	58.2%	59.4%
Socio-economically Disadvantaged	83.1%	84.1%	83.8%	81.4%
Foster Youth	43.2%	56.1%	55.2%	46.9%
Homeless	78.8%	81.3%	84.7%	66.4%
Special Education	64.0%	72.7%	69.0%	69.8%
District Overall	84.5%	84.8%	85.3%	82.3%

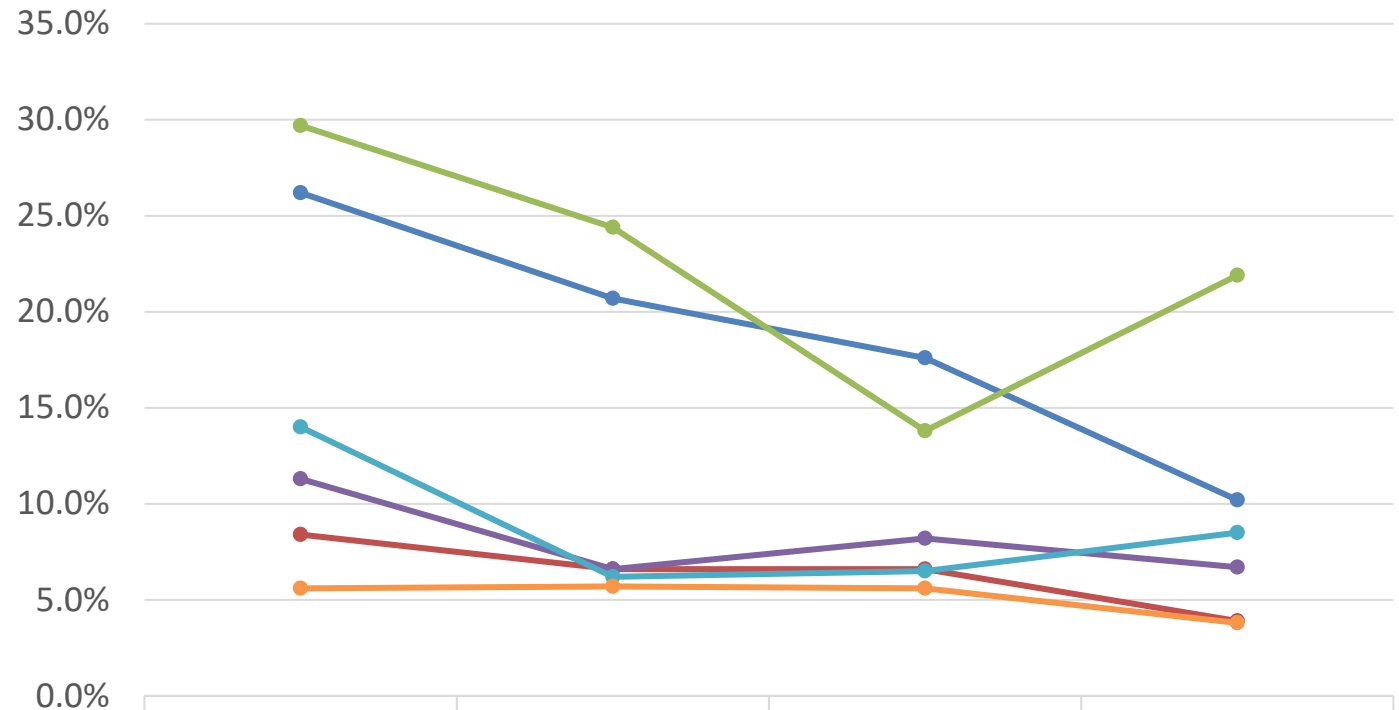
Source: CALPADS 15.2 Cohort Outcome Report

* 2016-17 figures provided from [DataQuest 2016-17 Four-Year Adjusted Cohort Outcome Report](#)



2019-20 PUSD Graduation and Dropout Rates by Student Groups

Table 2. Dropout Rate by student group over time



	2016-17 (N=1,220)	2017-18 (N=1,190)	2018-19 (N=1,251)	2019-20 (N=1,104)
English Learner	26.2%	20.7%	17.6%	10.2%
Socio-economically Disadvantaged	8.4%	6.6%	6.6%	3.9%
Foster Youth	29.7%	24.4%	13.8%	21.9%
Homeless	11.3%	6.6%	8.2%	6.7%
Special Education	14.0%	6.2%	6.5%	8.5%
District Overall	5.6%	5.7%	5.6%	3.8%

Source: CALPADS 15.2 Cohort Outcome Report

* 2016-17 figures provided from [DataQuest 2016-17 Four-Year Adjusted Cohort Outcome Report](#)