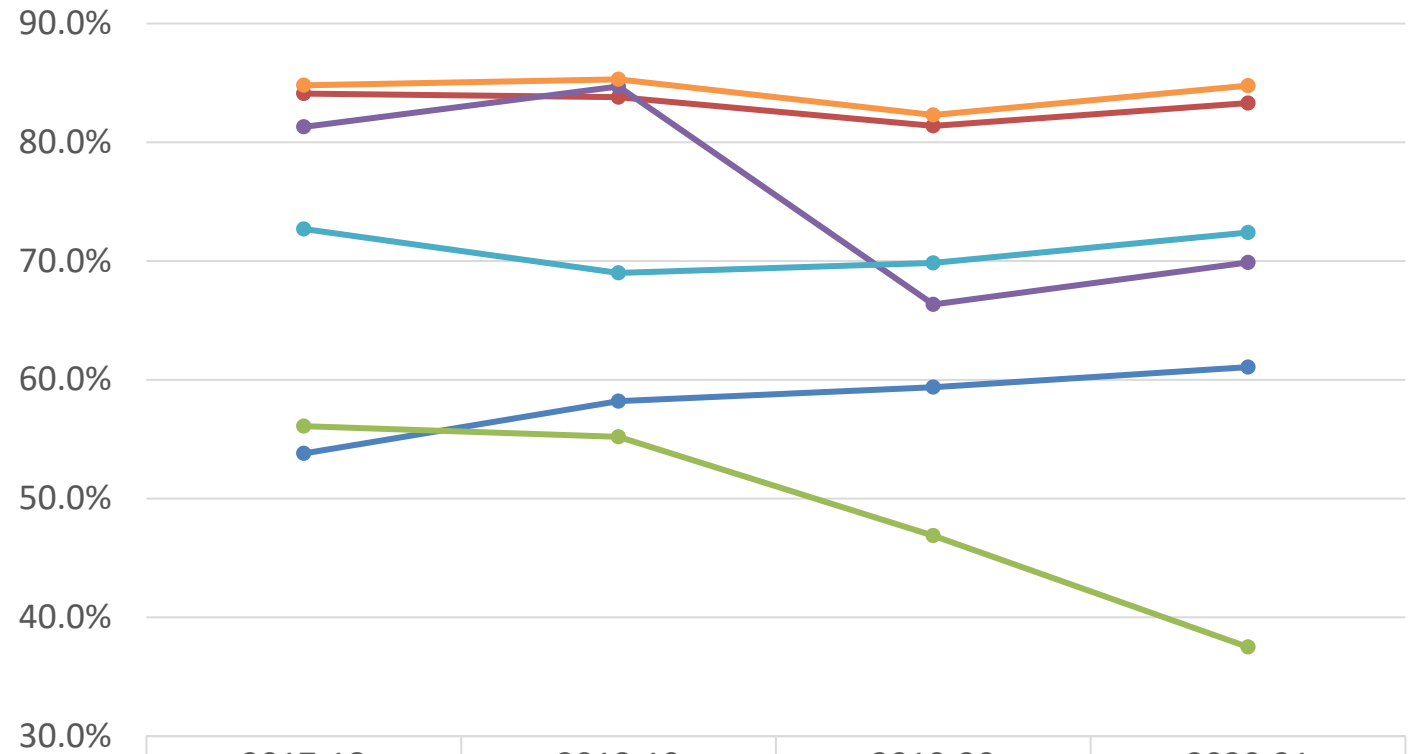




2020-21 PUSD Graduation and Dropout Rates by Student Groups

Table 1. Graduation Rate by student group over time



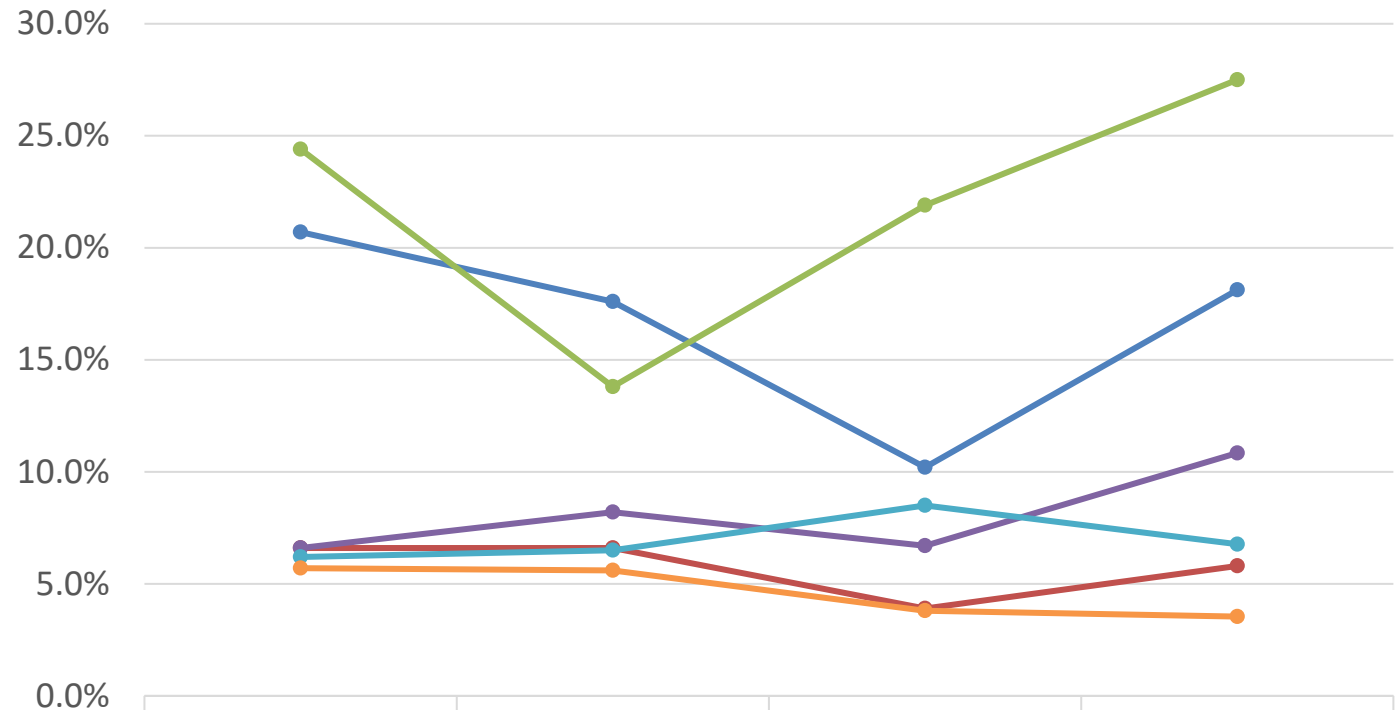
	2017-18 (N=1,190)	2018-19 (N=1,251)	2019-20 (N=1,104)	2020-21 (N=1,215)
English Learner	53.8%	58.2%	59.4%	61.1%
Socio-economically Disadvantaged	84.1%	83.8%	81.4%	83.3%
Foster Youth	56.1%	55.2%	46.9%	37.5%
Homeless	81.3%	84.7%	66.4%	69.9%
Special Education	72.7%	69.0%	69.8%	72.4%
District Overall	84.8%	85.3%	82.3%	84.8%

Source: CALPADS 15.2 Cohort Outcome Report



2020-21 PUSD Graduation and Dropout Rates by Student Groups

Table 2. Dropout Rate by student group over time



	2017-18 (N=1,190)	2018-19 (N=1,251)	2019-20 (N=1,104)	2020-21 (N=1,215)
English Learner	20.7%	17.6%	10.2%	18.1%
Socio-economically Disadvantaged	6.6%	6.6%	3.9%	5.8%
Foster Youth	24.4%	13.8%	21.9%	27.5%
Homeless	6.6%	8.2%	6.7%	10.8%
Special Education	6.2%	6.5%	8.5%	6.8%
District Overall	5.7%	5.6%	3.8%	3.5%

Source: CALPADS 15.2 Cohort Outcome Report