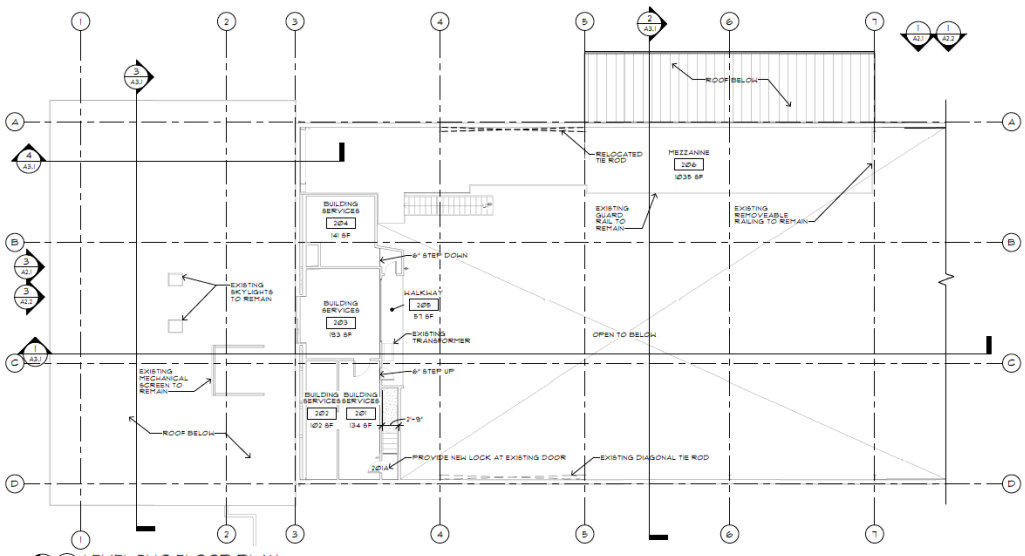


1 LEVEL ONE FLOOR PLAN
1/8" = 1'-0"



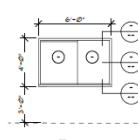
2 LEVEL TWO FLOOR PLAN
1/8" = 1'-0"

DOOR NUMBER	SIZE			DOOR TYPE	DOOR MATERIAL/FINISH	FRAME MATERIAL/FINISH	HULL GROUP	FIRE RATING	REMARKS
	WIDTH	HEIGHT	THICK.						
100A	3'-0"	7'-0"	1 1/2"	B					
100B	3'-0"	7'-0"	1 1/2"	B					
100C	3'-0"	7'-0"	1 1/2"	B					
100D	3'-0"	7'-0"	1 1/2"	B					
100E	6'-0"	6'-0"	1 1/2"	A					PAIR
100F	7'-0"	6'-0"	1 1/2"	A					NEW DOOR HARDWARE

DOOR SCHEDULE LEGEND

- HP/PF - HOLLOW METAL - PAINT
- HD - HOOD
- S/F - STEEL/SEE FACTORY FINISH
- ALUM. - ALUMINUM
- P - PAINT
- PR - PAIR
- SV - STAIN AND VARNISH
- SG - SOLID CORE
- TEMP. - TEMPERED
- GL - GLAZING
- MFR. - MANUFACTURED
- ANOD. - ANODIZED
- PRDF - PACKAGED STEEL DOOR FRAME
- SDM - 30 MINUTE SMOKE RATED
- 1HR - ONE HOUR RATED

RELIGHT TYPES



GLAZING TYPES

- 1 1/4" THICK TEMPERED SAFETY GLASS
- 1/4" THICK GLASS
- 7" THICK INSULATED GLASS
- 7" THICK INSULATED GLASS